



TROPICAL UPDATE



11:00 AM EDT

Friday, August 28, 2020

Central Atlantic Tropical Wave (30%)

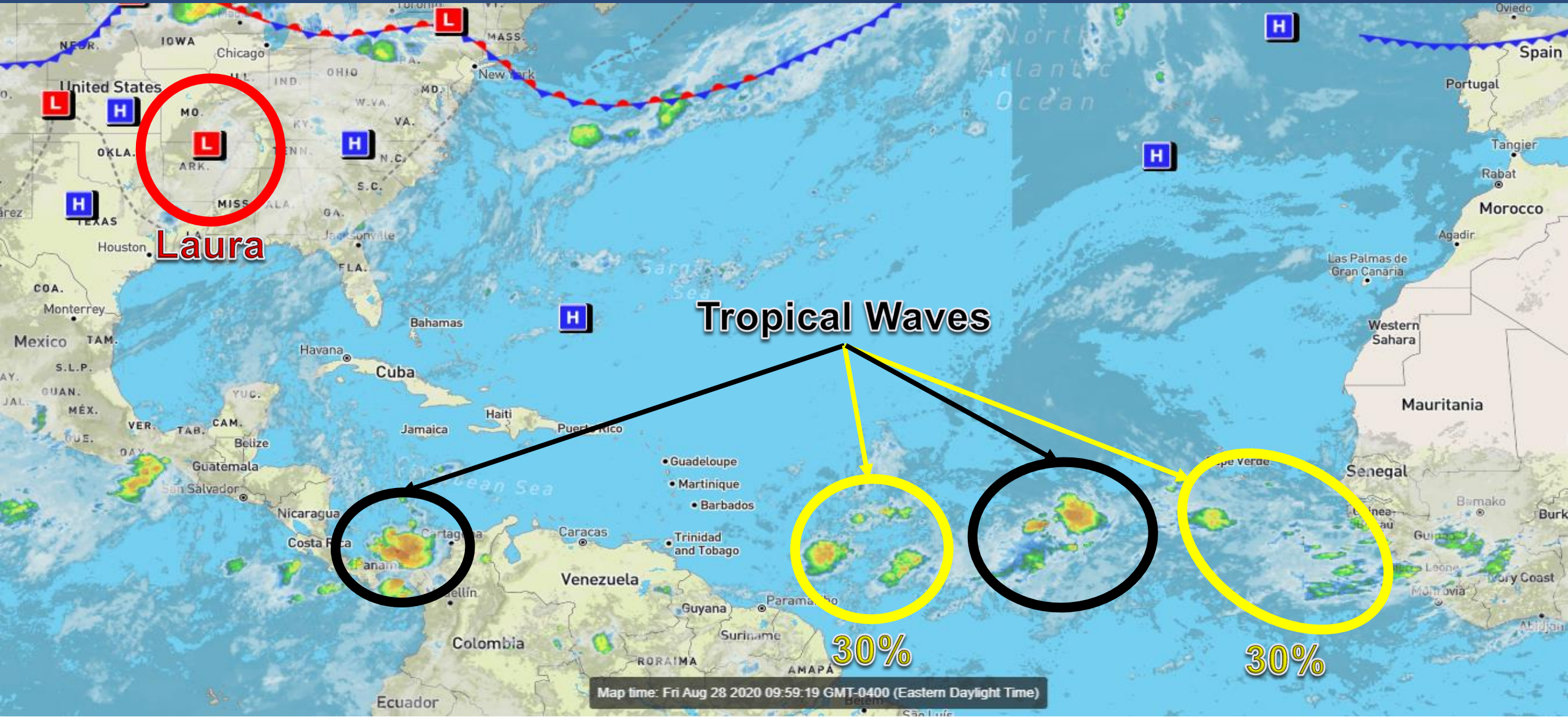
Cabo Verde Tropical Wave (30%)

This update is intended for government and emergency response officials, and is provided for informational and situational awareness purposes only. Forecast conditions are subject to change based on a variety of environmental factors. For additional information, or for any life safety concerns with an active weather event please contact your County Emergency Management or Public Safety Office, local National Weather Service forecast office, or visit the National Hurricane Center website at www.hurricanes.gov.



Atlantic Basin Satellite Image

Chance of development: — None — Low — Medium — High



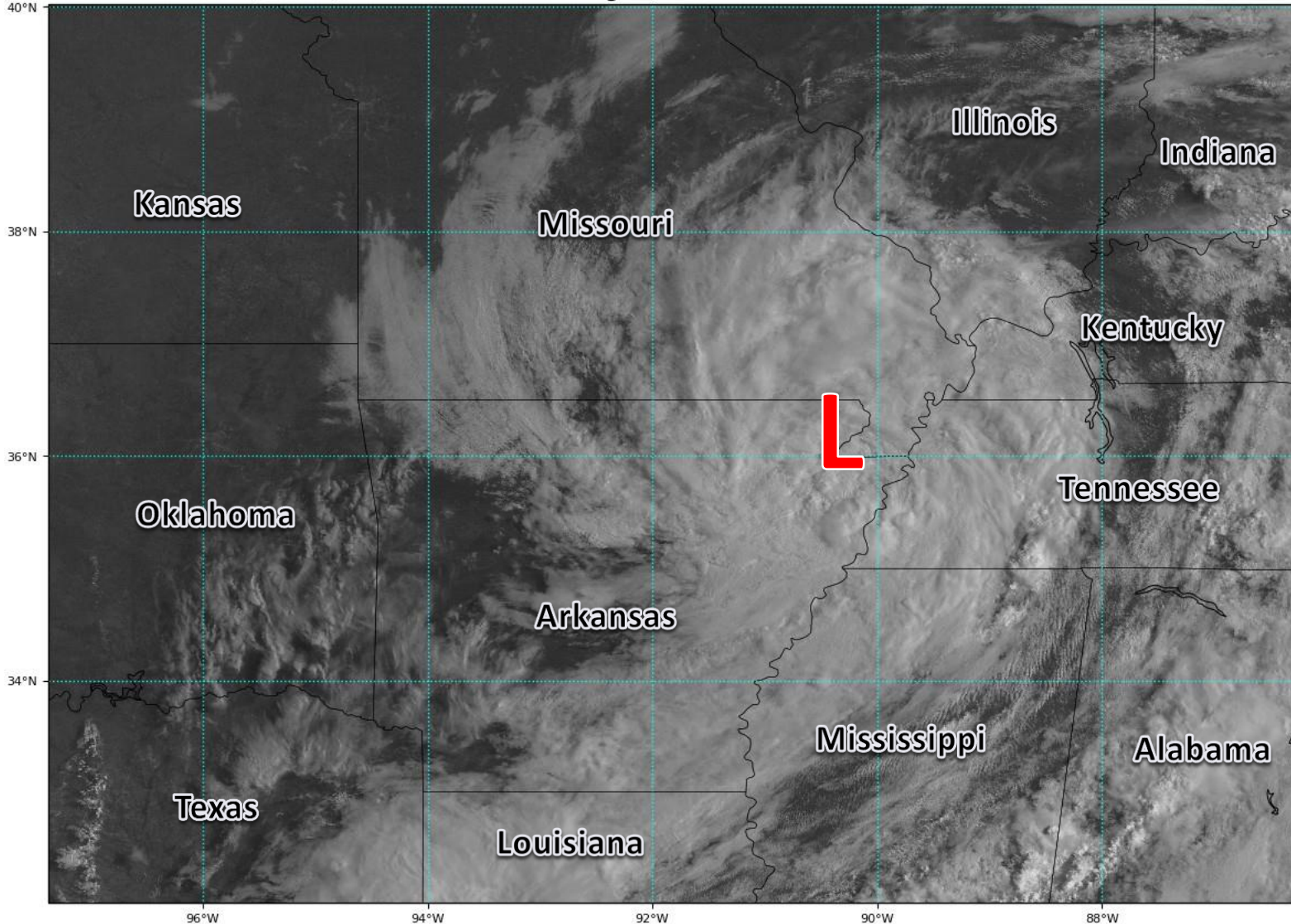


Satellite Imagery

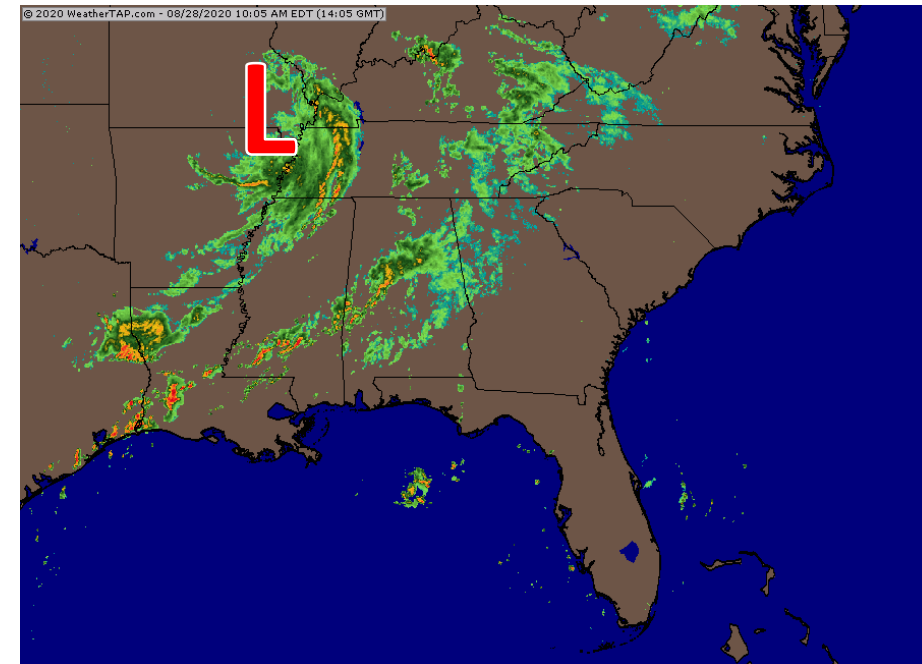
Louisiana – Tropical Depression Laura

GOES-16 Channel 2 (visible) Reflectance at 13:52Z Aug 28, 2020

TROPICALTIDBITS.COM



The National Hurricane Center issued its final advisory on Laura last night at 11 PM ET. However, the Weather Prediction Center is issuing advisories on Laura until it merges with a front in the next day or two.

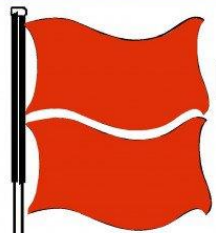




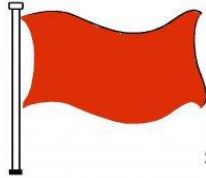
Rip Current Outlook

Today

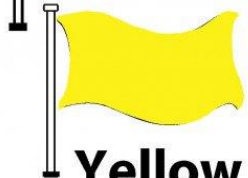
BEACH FLAG WARNING SYSTEM



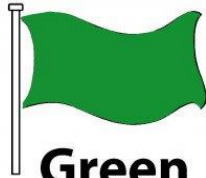
Double Red
Water Closed to
Public Use



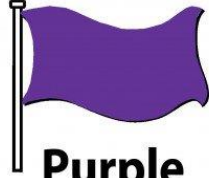
Red
High Hazard
(rough conditions,
such as strong surf
and or currents)



Yellow
Medium Hazard
(light surf and or
currents)

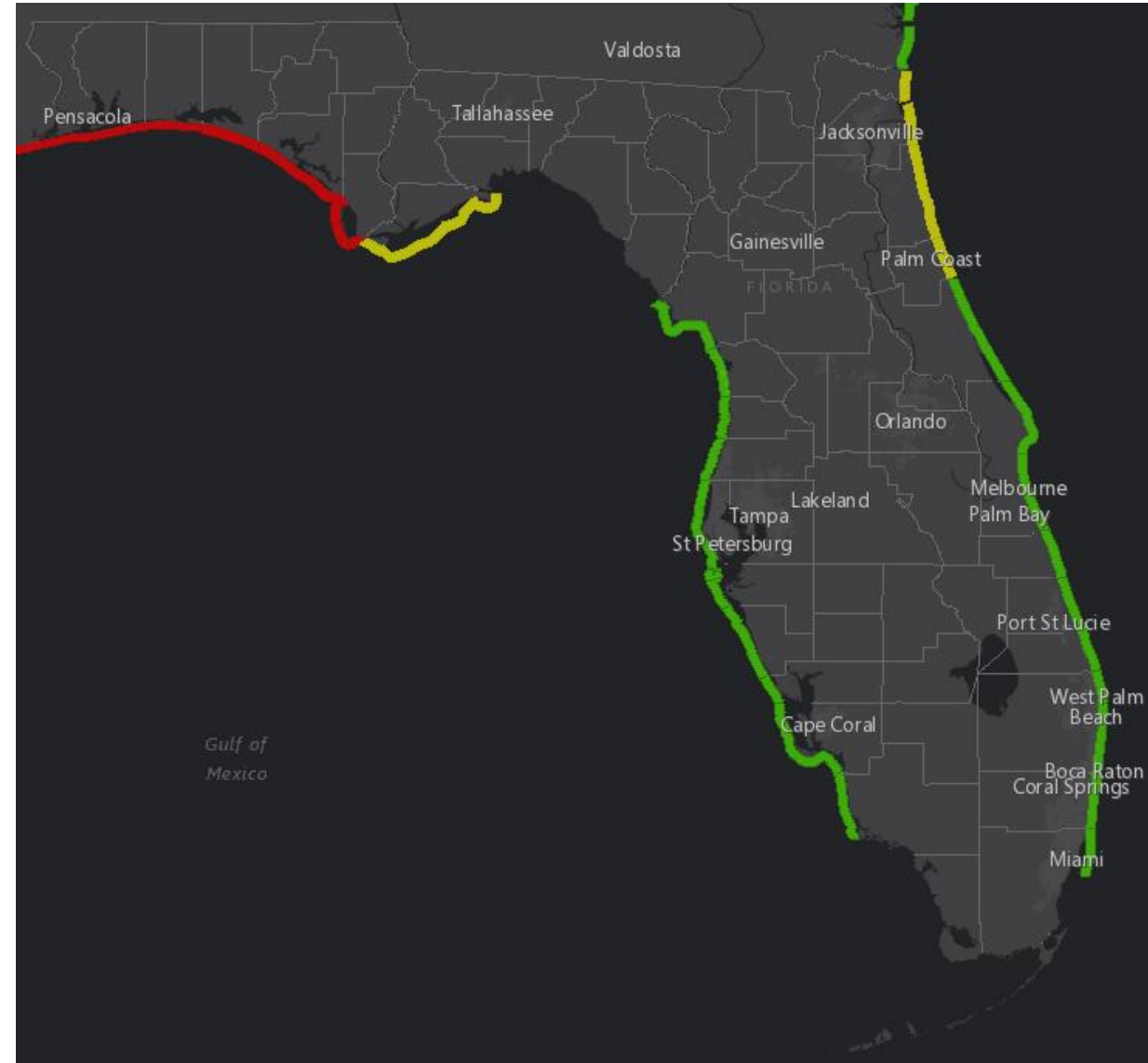


Green
Low Hazard
(calm conditions)



Purple
Marine Pest
(jellyfish, stingrays
& dangerous fish)

High rip current risk continues for most Panhandle beaches due to remaining swells from Laura.





Tropical Weather Outlook

Possible Area of Development During the Next 5 Days ([LINK](#))



Five-Day Graphical Tropical Weather Outlook

National Hurricane Center Miami, Florida



www.hurricanes.gov

Disturbance 1

1
(30%)



8:00 am EDT
Fri Aug 28 2020

100W 90W 80W 70W 60W 50W 40W 30W 20W

Current Disturbances and Five-Day Cyclone Formation Chance: X < 40% X 40-60% X > 60%

Tropical or Sub-Tropical Cyclone: ○ Depression ○ Storm ○ Hurricane

⊗ Post-Tropical Cyclone or Remnants

A tropical wave located about 900 miles east of the Windward Islands is producing an area of showers and thunderstorms. Some gradual development of this system is possible during the next several days while it moves westward at about 15 mph toward the eastern Caribbean islands.

*Formation chance through 48 hrs...low...20%

*Formation chance through 5 days...low...30%



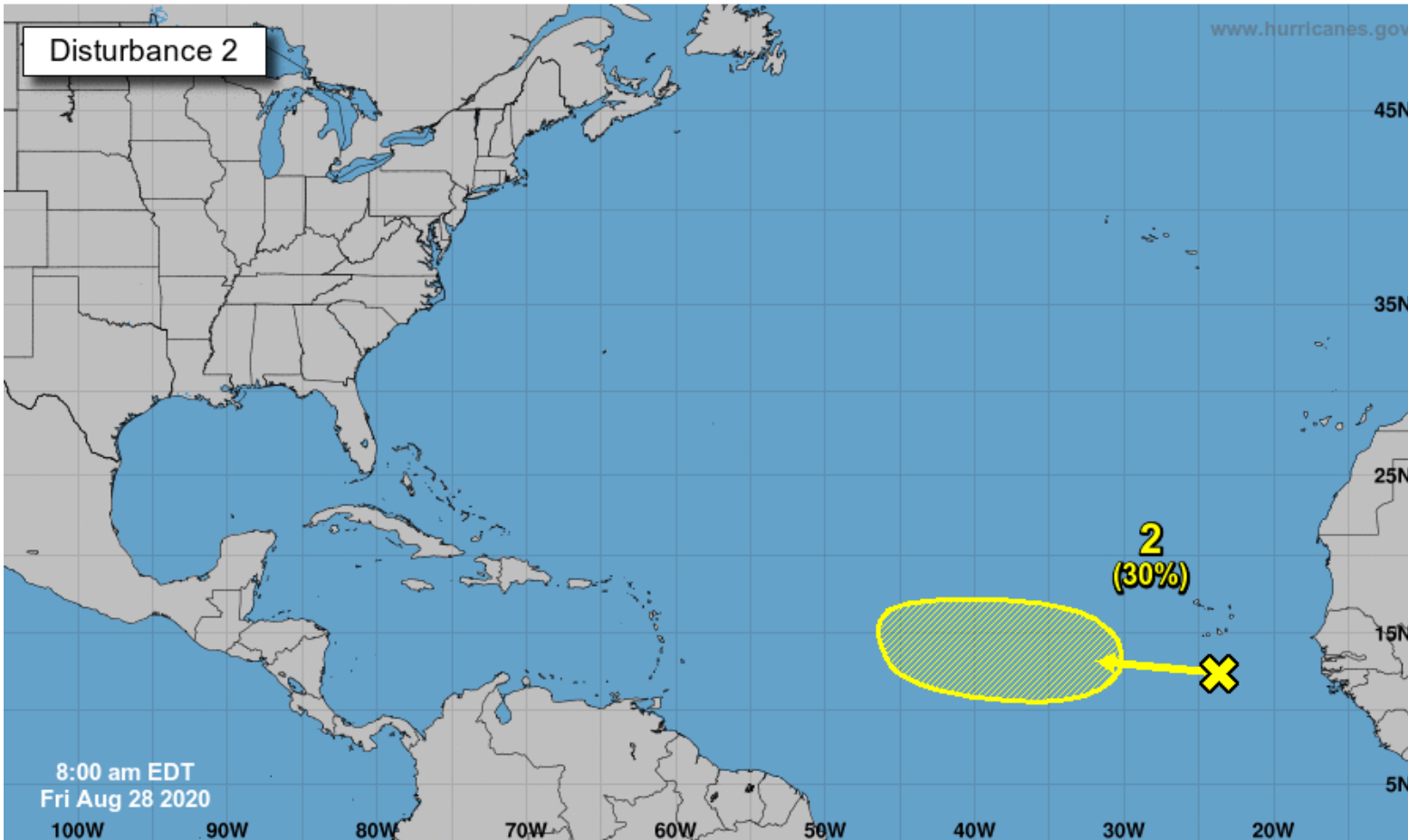
Tropical Weather Outlook

Possible Area of Development During the Next 5 Days ([LINK](#))



Five-Day Graphical Tropical Weather Outlook

National Hurricane Center Miami, Florida



Another tropical wave is located over the eastern tropical Atlantic Ocean just west of the Cabo Verde Islands.

The northern part of this wave, which should move rapidly westward over the central Atlantic during the next few days, is not forecast to develop as it is expected to remain in unfavorable conditions.

However, the southern part of the wave is expected to be nearly stationary south of the Cabo Verde Islands for the next several days, and some development of this system is possible early next week when it begins to move slowly westward over the eastern and central tropical Atlantic.

***Formation chance through 48 hrs...low...near 0%**

***Formation chance through 5 days...low...30%**

Current Disturbances and Five-Day Cyclone Formation Chance: < 40% 40-60% > 60%

Tropical or Sub-Tropical Cyclone: Depression Storm Hurricane

Post-Tropical Cyclone or Remnants



Model Forecast Tracks

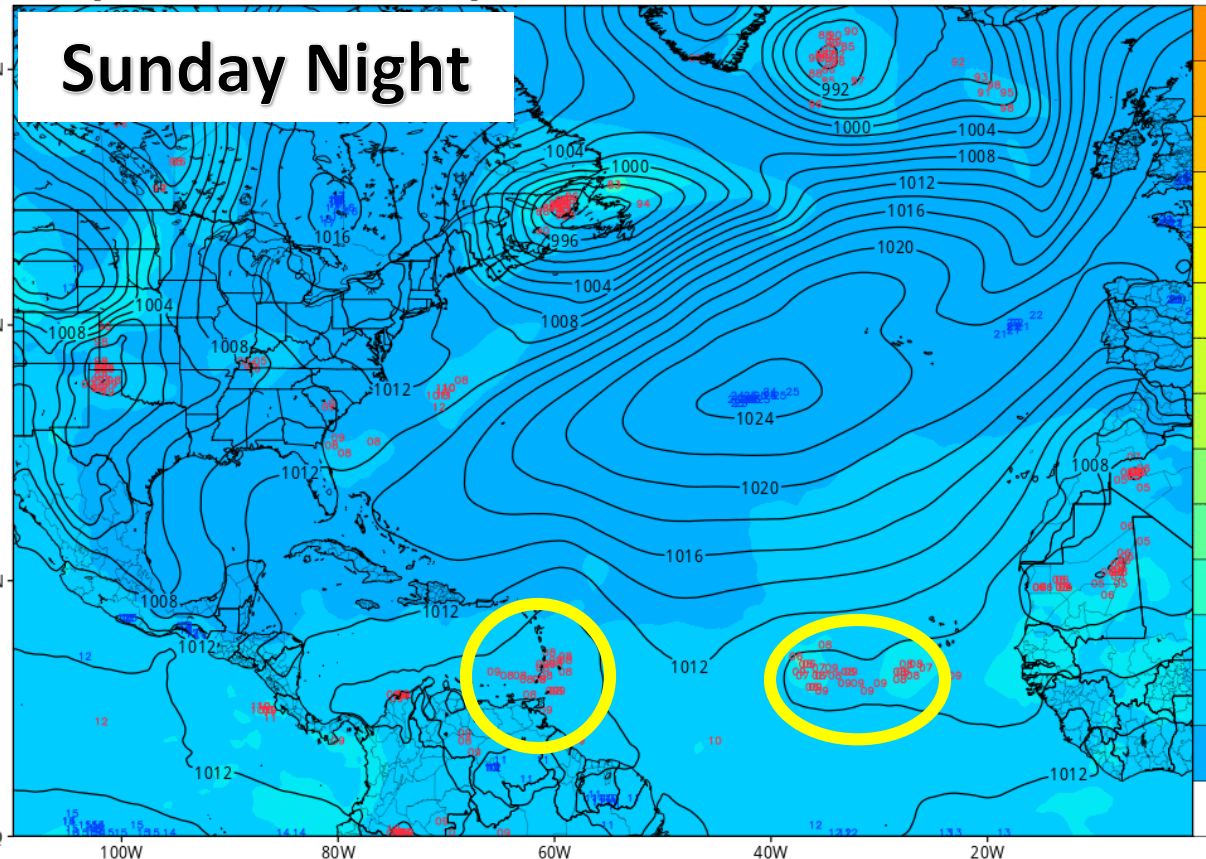
Ensembles Models

GEFS Mean MSLP (mb), Ensemble Member Pressure Centers (Lows: red | High: blue), & Normalized Spread (σ)

Init: 06z Aug 28 2020 Forecast Hour: [72] valid at 06z Mon, Aug 31 2020

TROPICALTIDBITS.COM

Sunday Night

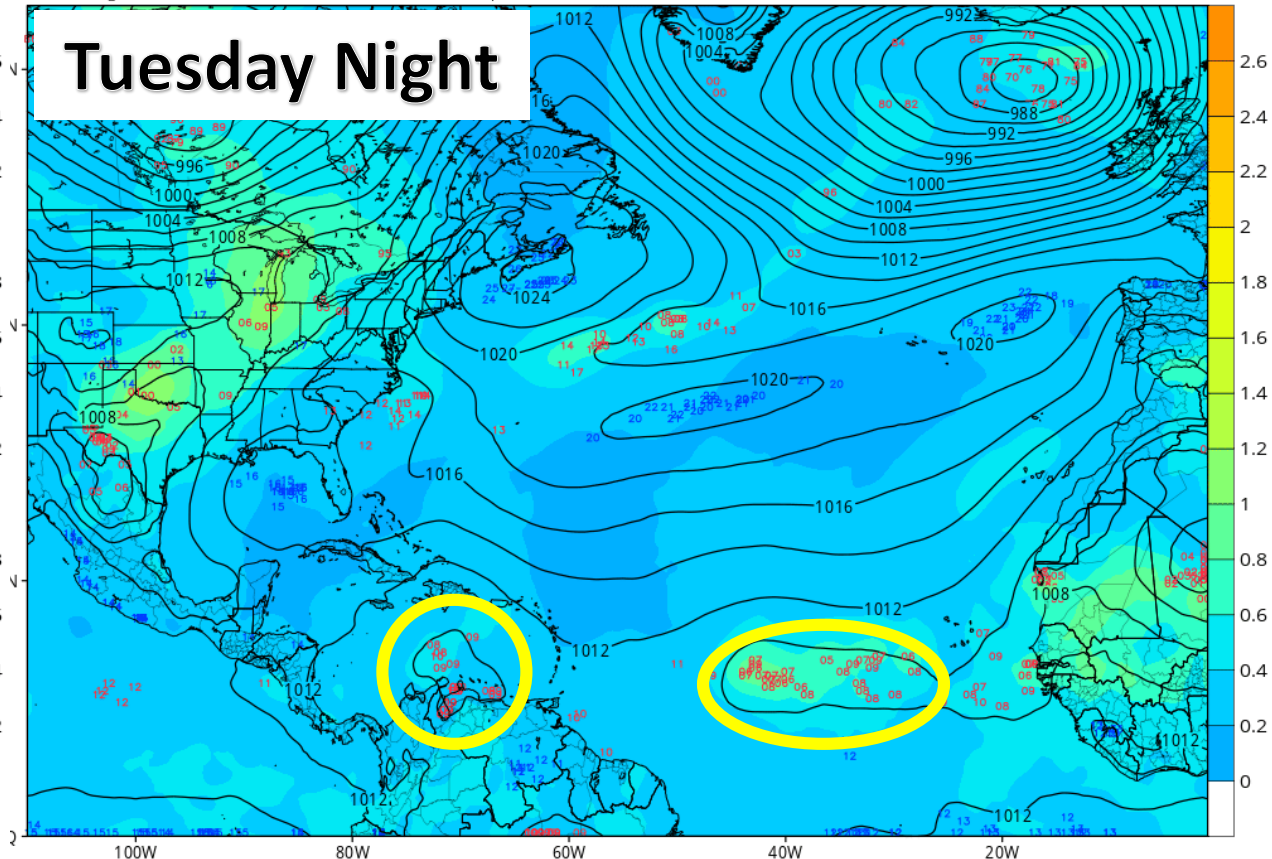


GEFS Mean MSLP (mb), Ensemble Member Pressure Centers (Lows: red | High: blue), & Normalized Spread (σ)

Init: 06z Aug 28 2020 Forecast Hour: [120] valid at 06z Wed, Sep 02 2020

TROPICALTIDBITS.COM

Tuesday Night



The tropical wave in the central Atlantic currently will move through the Lesser Antilles in about 3 days, then into the central and eastern Caribbean Sea in about 5 days. The Cabo Verde tropical wave will move very little through the next 3 days. However, the speed at which it starts moving away from the Cabo Verde Islands during the next 3-5 days is uncertain. Neither of the waves currently pose an immediate threat to Florida, but they should at least be monitored.



Overall Summary

Tropical Depression Laura

- Laura is now inland over northeastern Arkansas and southeastern Missouri. NHC issued their final advisory at 11 PM ET Thursday.

Central Atlantic Tropical Wave

- A tropical wave about 900 miles east of the Lesser Antilles could gradually develop over the next several days.
- The wave will move through the Lesser Antilles in about 3 days and into the central and eastern Caribbean in about 5 days.
- This system has a 20% (low) chance of formation during the next 2 days and a 30% (low) chance during the next 5 days.

Cabo Verde Tropical Wave

- A tropical wave near the Cabo Verde Islands will split in two with the northern end moving westward and not developing.
- The southern end will remain near the Cabo Verde Islands for several days before slowly moving westward and possibly developing.
- This system has a 0% (low) chance of formation during the next 2 days, but a 30% (low) chance during the next 5 days.

Florida Outlook:

- Nuisance coastal flooding at high tide over the next day or so is possible in the Panhandle, with tides running about 1 to 1.5' above normal.
- Dangerous rip currents and high surf are expected at Panhandle beaches.
- Increased moisture from Laura and passing disturbances will create higher rain chances this week across the state, particularly in North Florida.
- Neither of the tropical waves in the Atlantic pose an immediate threat to Florida, but they should be monitored over the next several days..

For more details on impacts from Tropical Depression Laura, please visit the National Hurricane Center, or the local Weather Service Offices at www.weather.gov.

The next briefing packet will be issued Saturday. For the latest information on the tropics, please visit the National Hurricane Center website at www.hurricanes.gov.



TROPICAL UPDATE



Created by:

Cameron Young, Assistant State Meteorologist

Cameron.Young@em.myflorida.com

State Meteorological Support Unit

Florida Division of Emergency Management

Users wishing to subscribe (approval pending) to this distribution list, register at:

https://public.govdelivery.com/accounts/FLDEM/subscriber/new?topic_id=SERT_Met_Tropics.

Other reports available for subscription are available at:

<https://public.govdelivery.com/accounts/FLDEM/subscriber/new?preferences=true>