



TROPICAL UPDATE



11:00 AM EDT

Thursday, August 27, 2020

Hurricane Laura

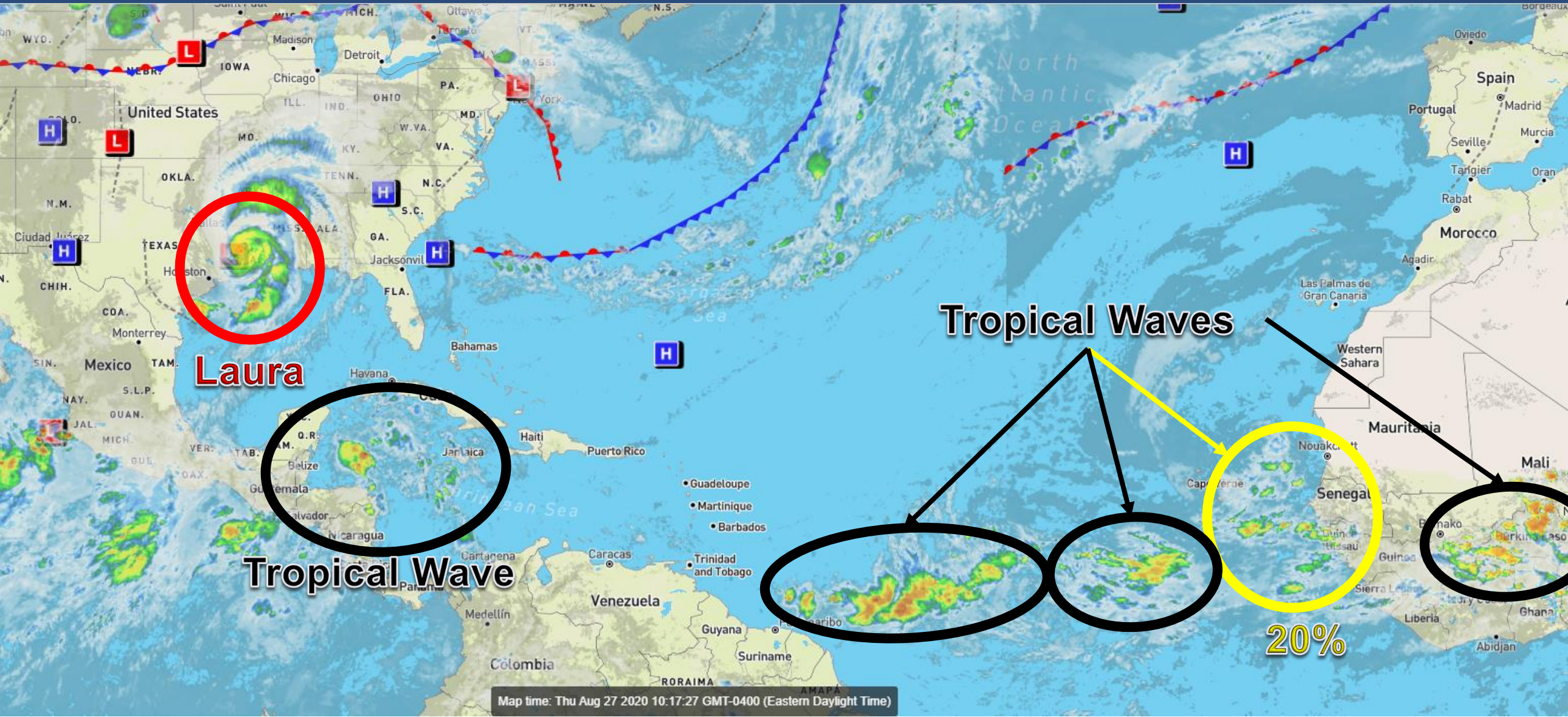
Tropical Wave near Africa (20%)

This update is intended for government and emergency response officials, and is provided for informational and situational awareness purposes only. Forecast conditions are subject to change based on a variety of environmental factors. For additional information, or for any life safety concerns with an active weather event please contact your County Emergency Management or Public Safety Office, local National Weather Service forecast office, or visit the National Hurricane Center website at www.hurricanes.gov.



Atlantic Basin Satellite Image

Chance of development: — None — Low — Medium — High



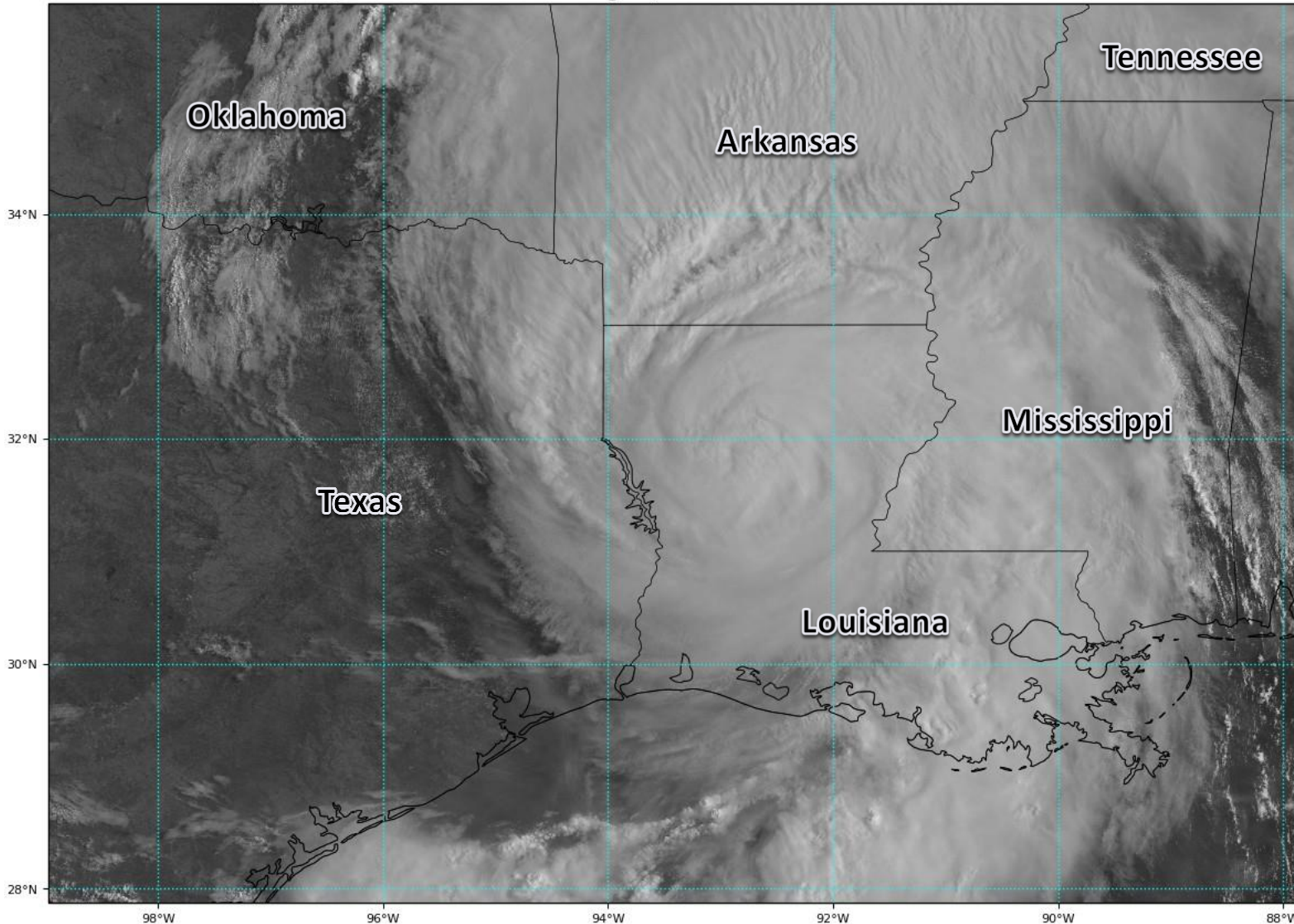


Satellite Imagery

Louisiana – Hurricane Laura

GOES-16 Channel 2 (visible) Reflectance at 14:12Z Aug 27, 2020

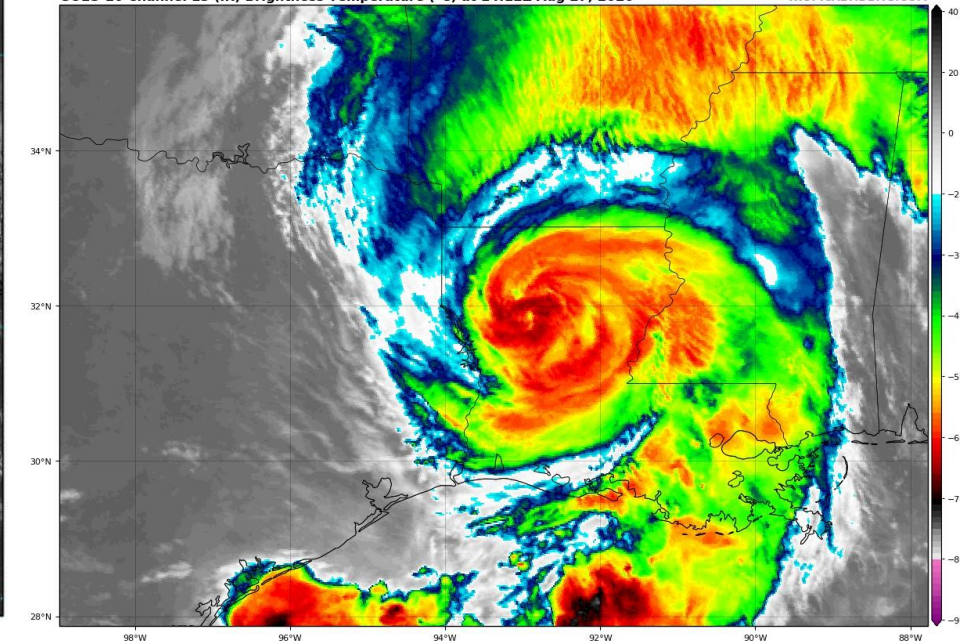
TROPICALTIDBITS.COM



Laura remains well-defined and organized over northern Louisiana. It will continue to slowly degrade as it moves into Arkansas later today and through tonight.

GOES-16 Channel 13 (IR) Brightness Temperature (°C) at 14:12Z Aug 27, 2020

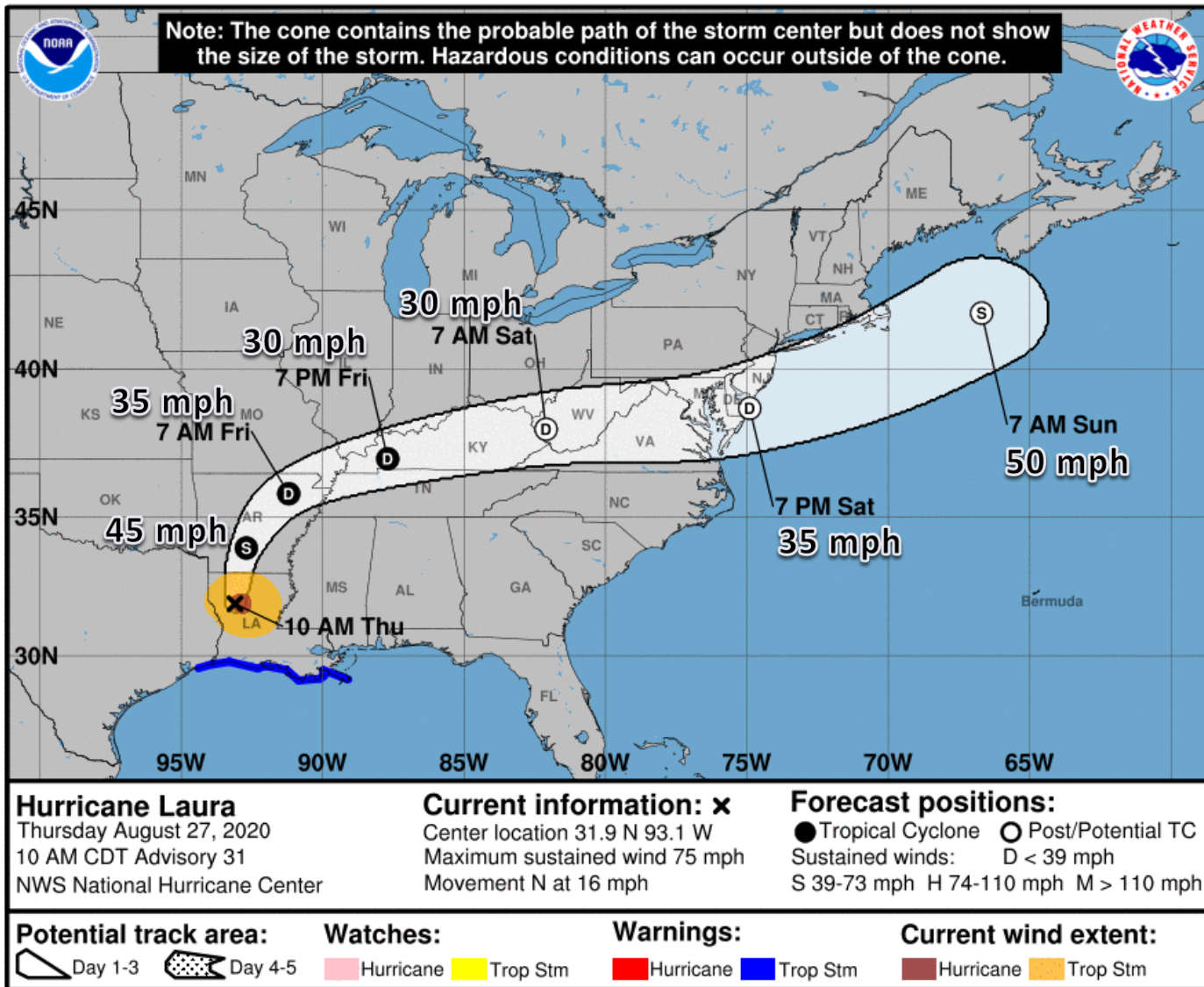
TROPICALTIDBITS.COM





Official Forecast Track

From the National Hurricane Center –Hurricane Laura



- Laura made landfall last night in Cameron, Louisiana, as a Category 4 Hurricane with winds of 150 mph.
- The center of Hurricane Laura is located 55 miles southeast of Shreveport, Louisiana
- Maximum sustained winds are near 75 mph, making Laura an Category 1 Hurricane.
- Rapid weakening is forecast, and Laura is forecast to become a tropical storm later today before moving into Arkansas.
- Storm surge remains along the coast and may remain trapped along the coast for several days as it will be slow to drain.
- Hurricane and Storm Surge Warnings are in effect for Texas and Louisiana. Tropical Storm Warnings are in effect for parts of Arkansas.

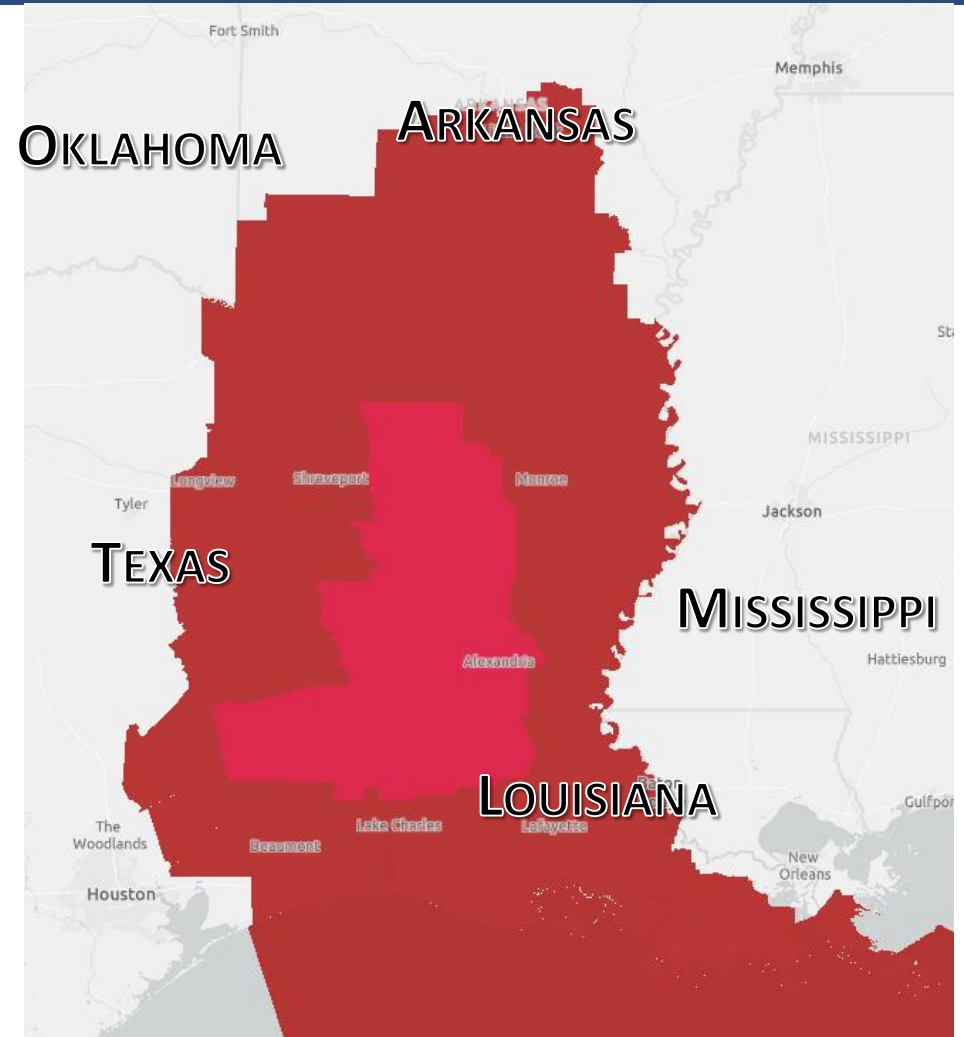


Storm Surge/Wind Watches & Warnings

Hurricane Laura



Storm Surge Warning



**Hurricane Warning
Tropical Storm Warning**

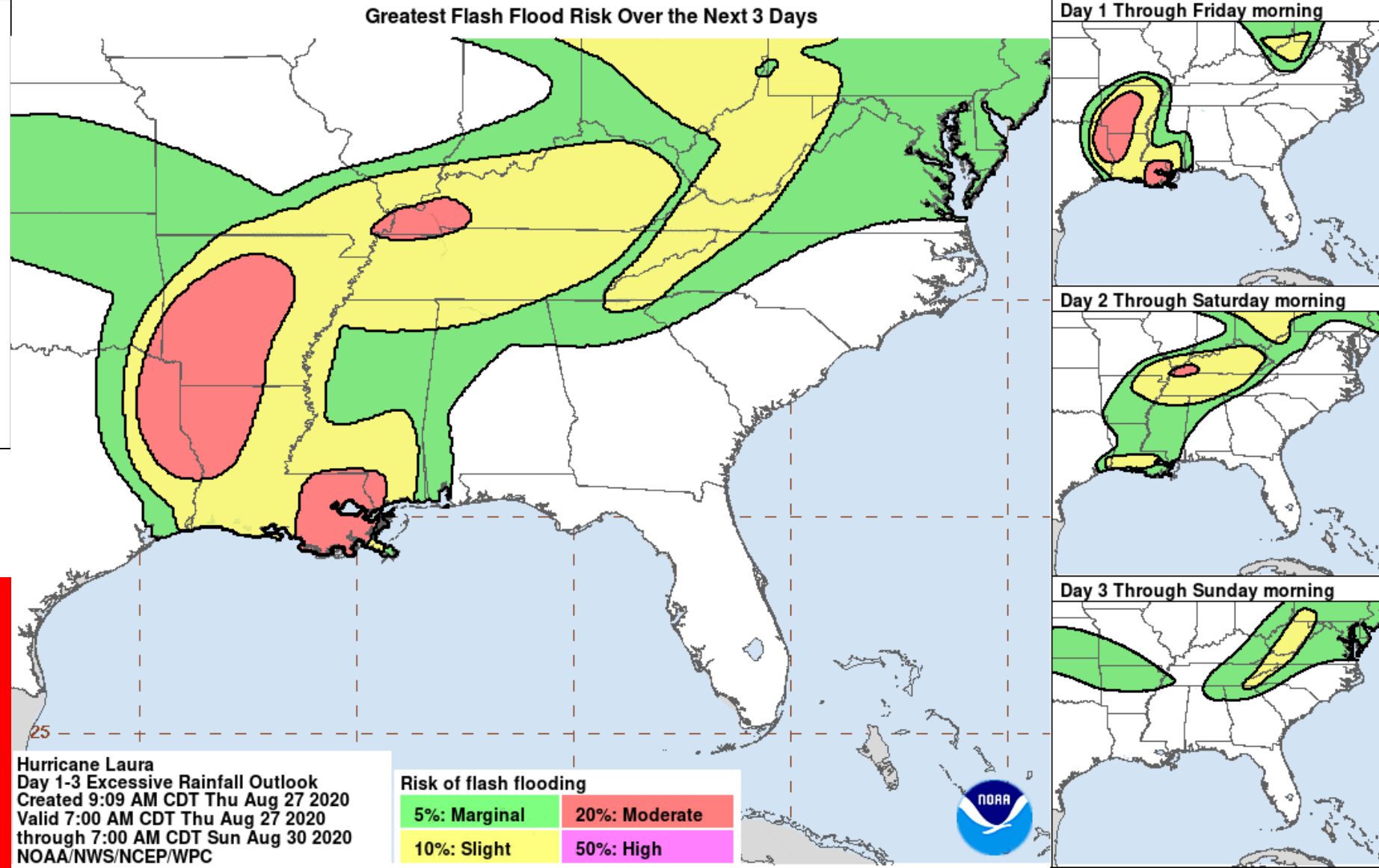


Flash Flood Outlook

3-Day Event Summary

Rainfall totals of 3-6" are likely across much of Arkansas, Louisiana, eastern Texas, the lower and mid Mississippi River Valley, and the lower Ohio Valley.

Flash flooding is likely in these areas.

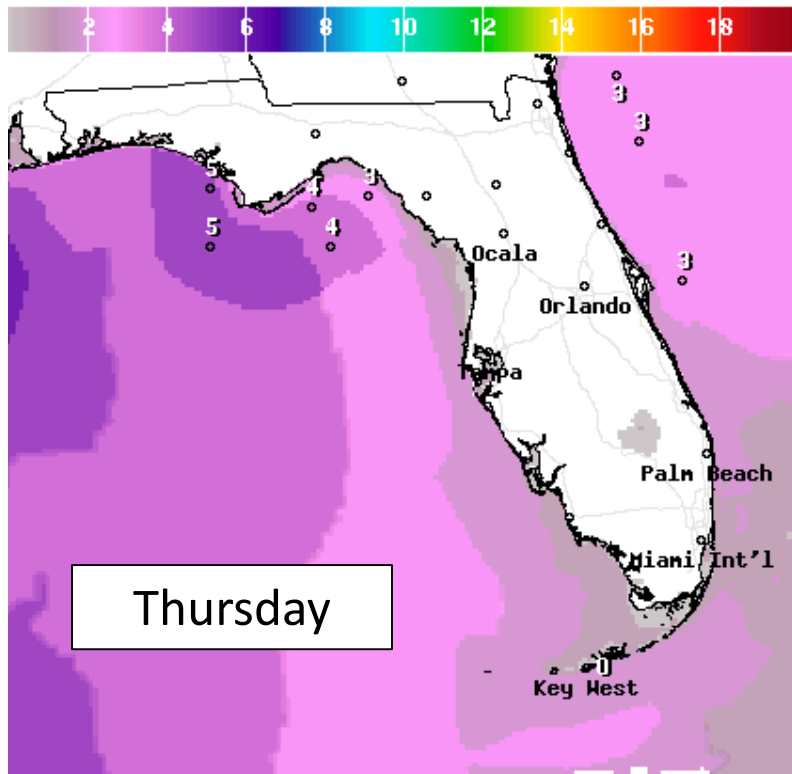


MARGINAL (MRGL)	SLIGHT (SLGT)	MODERATE (MDT)
Isolated flash floods possible	Scattered flash floods possible	Numerous flash floods likely
Localized and primarily affecting places that can experience rapid runoff with heavy rainfall.	Mainly localized. Most vulnerable are urban areas, roads, small streams and washes. Isolated significant flash floods possible.	Numerous flash flooding events with significant events possible. Many streams may flood, potentially affecting larger rivers.

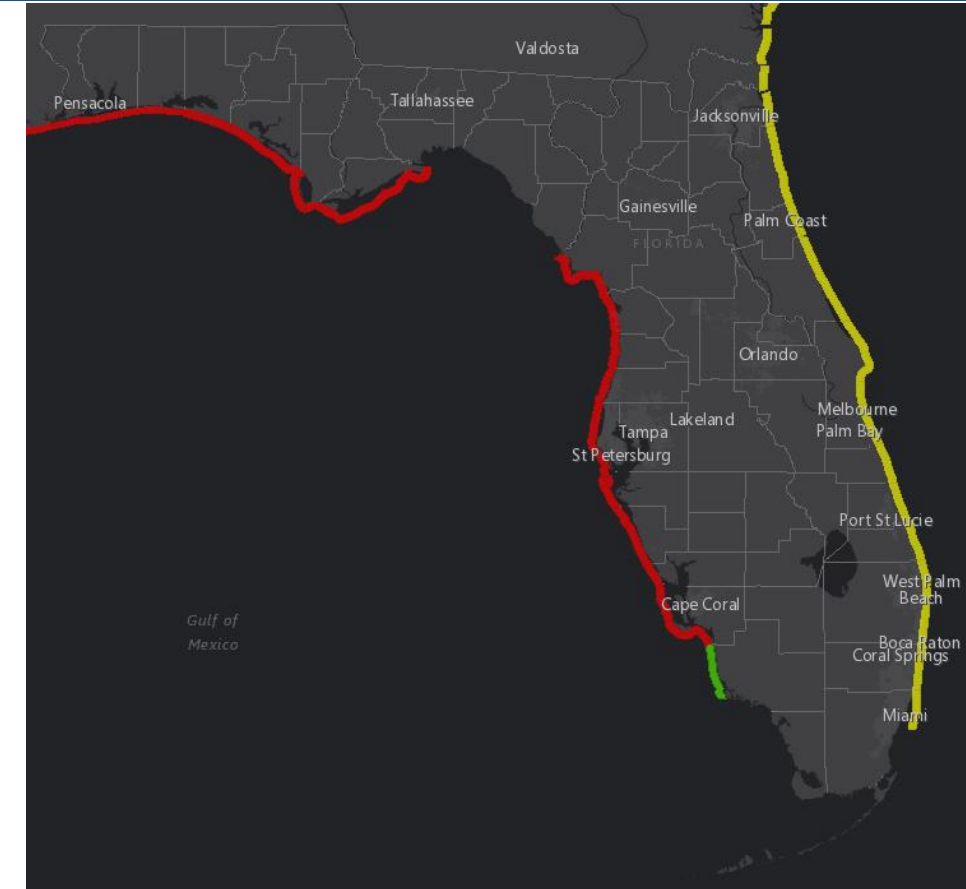
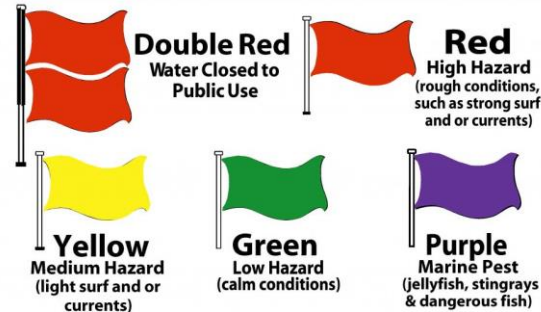


Wave Heights & Rip Currents

Today



BEACH FLAG WARNING SYSTEM



Waves of 2-5' are still expected along many Gulf Coast beaches today. The high-energy swells from Laura will continue to create a high rip current risk today along Gulf beaches, and possibly tomorrow as well.



Tropical Weather Outlook

Possible Area of Development During the Next 5 Days ([LINK](#))



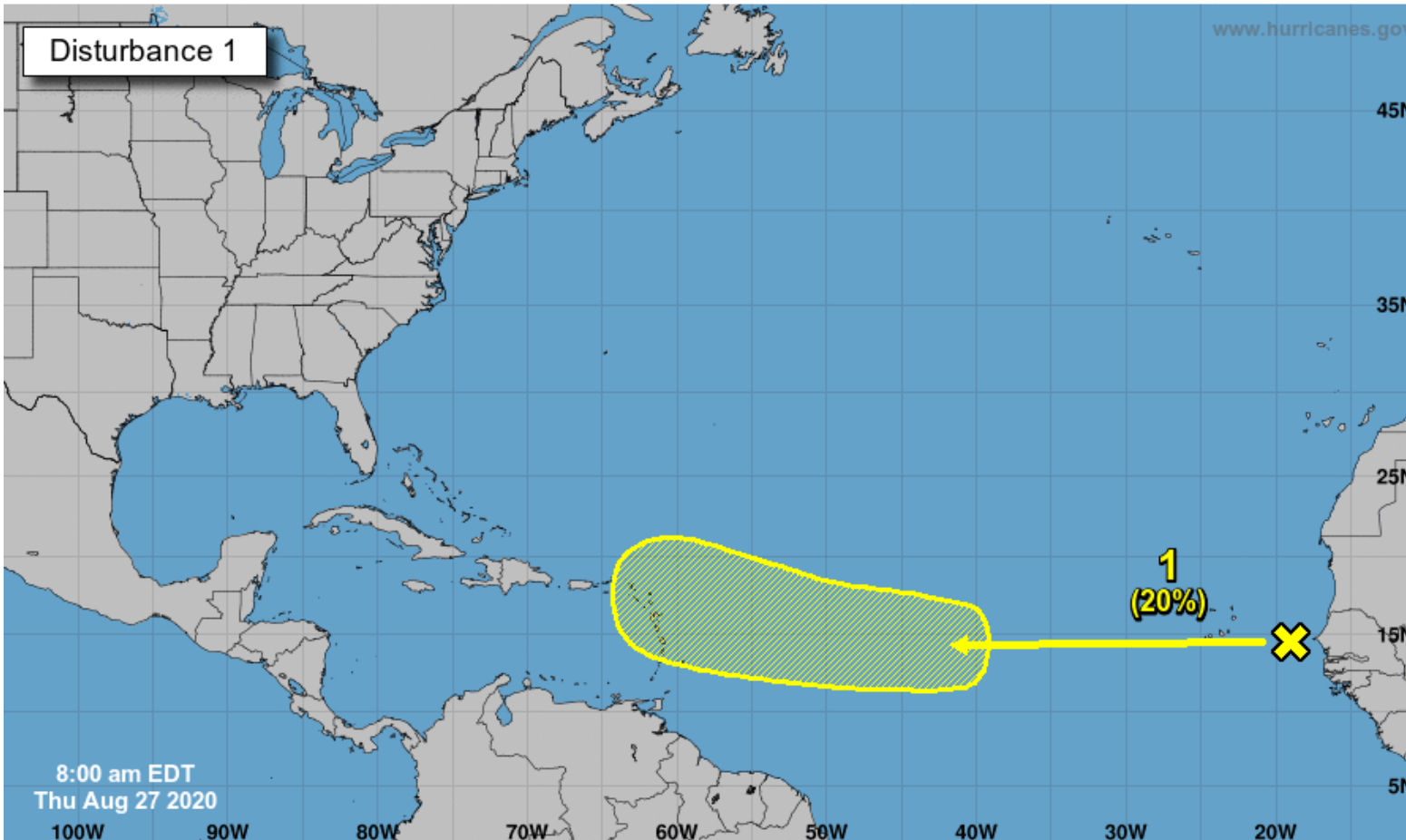
Five-Day Graphical Tropical Weather Outlook

National Hurricane Center Miami, Florida



www.hurricanes.gov

Disturbance 1



8:00 am EDT
Thu Aug 27 2020

Current Disturbances and Five-Day Cyclone Formation Chance: < 40% 40-60% > 60%
Tropical or Sub-Tropical Cyclone: Depression Storm Hurricane
 Post-Tropical Cyclone or Remnants

A westward-moving tropical wave located over the far eastern tropical Atlantic, a couple hundred miles east of the Cabo Verde Islands, continues to produce disorganized shower activity. Although environmental conditions are not expected to be conducive for development during the next couple of days, they are forecast to become more favorable over the weekend and into early next week when the wave moves into the central tropical Atlantic.

***Formation chance through 48 hrs...low...near 0%**

***Formation chance through 5 days...low...20%**



Overall Summary

Hurricane Laura

- Laura made landfall near Cameron, Louisiana as a Category 4 hurricane with winds of 150 mph at 2 AM ET/1 AM CT.
- The center of Hurricane Laura is located about 55 miles southeast of Shreveport, Louisiana.
- Maximum sustained winds are near 75 mph (Category 1), and continued rapid weakening is forecast as it moves into Arkansas.
- Tropical Storm and Hurricane Warnings remain in effect for parts of Louisiana and Arkansas. Storm Surge Warnings remain along the Louisiana coast.
- Flash flooding and tornadoes are expected across Louisiana, Arkansas, eastern Texas, and Mississippi.

Florida Outlook:

- Nuisance coastal flooding at high tide over the next few days is possible in the Panhandle and Big Bend, with tides running about 1 to 1.5' above normal.
- Dangerous rip currents and high surf are expected at all Florida beaches, but particularly in the Gulf.

For more details on impacts to Texas, Louisiana, Mississippi, and Arkansas from Hurricane Laura, please visit the National Hurricane Center, or the local Weather Service Offices at www.weather.gov.

The next briefing packet will be issued Friday Morning with the 11 AM advisory. For the latest information on the tropics, please visit the National Hurricane Center website at www.hurricanes.gov.



TROPICAL UPDATE



Created by:

Cameron Young, Assistant State Meteorologist

Cameron.Young@em.myflorida.com

State Meteorological Support Unit

Florida Division of Emergency Management

Users wishing to subscribe (approval pending) to this distribution list, register at:

https://public.govdelivery.com/accounts/FLDEM/subscriber/new?topic_id=SERT_Met_Tropics.

Other reports available for subscription are available at:

<https://public.govdelivery.com/accounts/FLDEM/subscriber/new?preferences=true>