



TROPICAL UPDATE



11:00 AM EDT

Wednesday, August 26, 2020

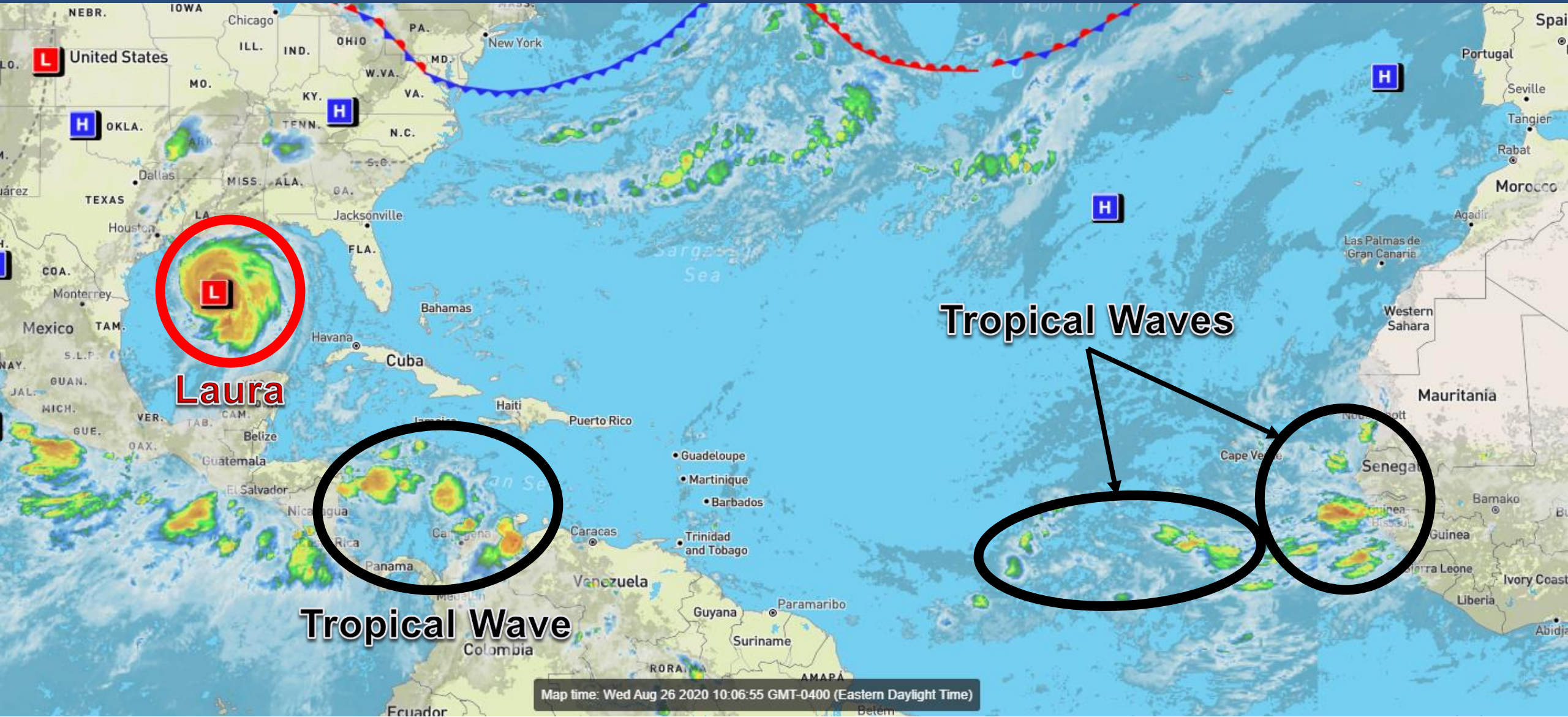
Major Hurricane Laura

This update is intended for government and emergency response officials, and is provided for informational and situational awareness purposes only. Forecast conditions are subject to change based on a variety of environmental factors. For additional information, or for any life safety concerns with an active weather event please contact your County Emergency Management or Public Safety Office, local National Weather Service forecast office, or visit the National Hurricane Center website at www.hurricanes.gov.



Atlantic Basin Satellite Image

Chance of development: — None — Low — Medium — High



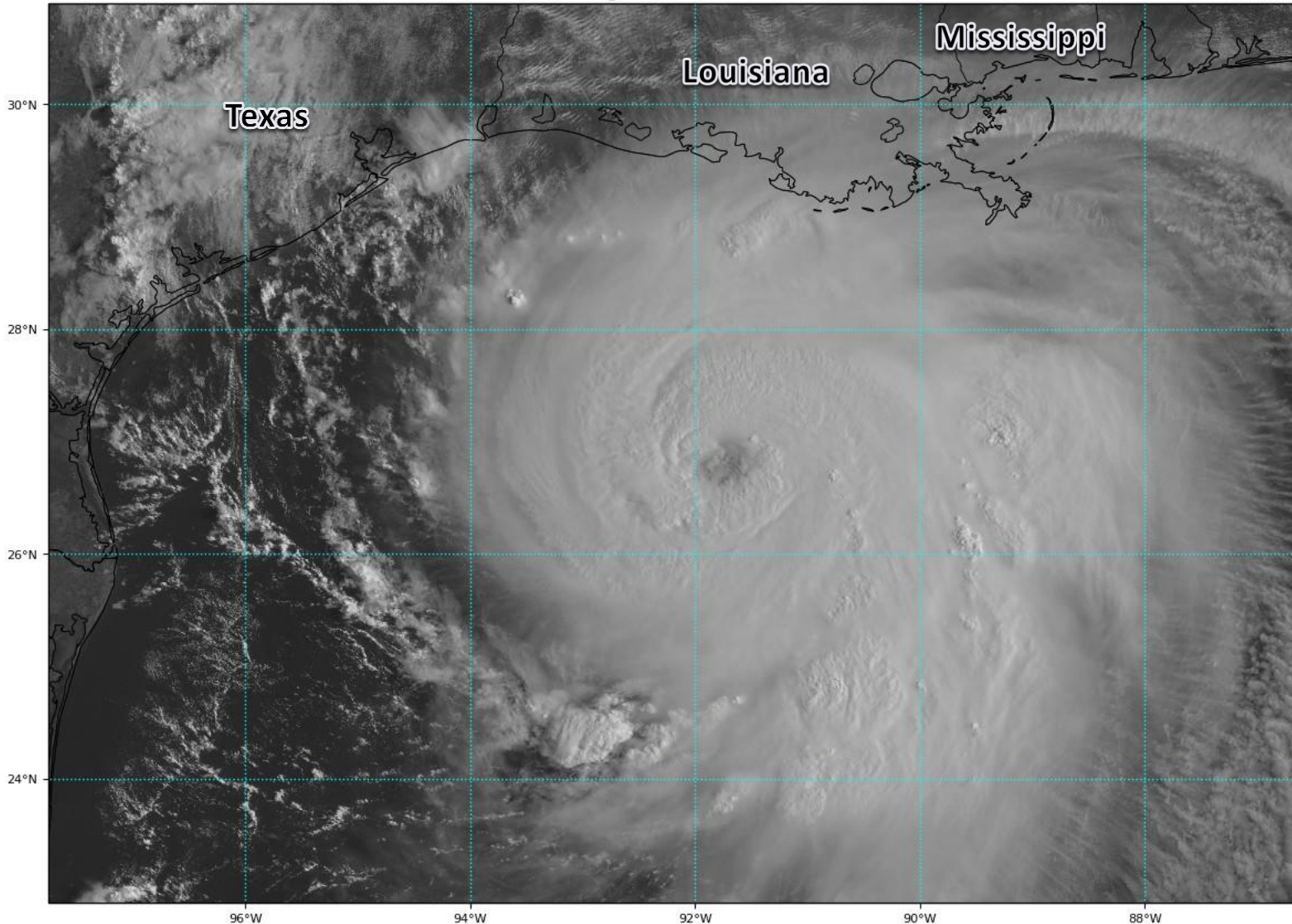


Satellite Imagery

Gulf of Mexico – Major Hurricane Laura

GOES-16 Channel 2 (visible) Reflectance at 14:02Z Aug 26, 2020

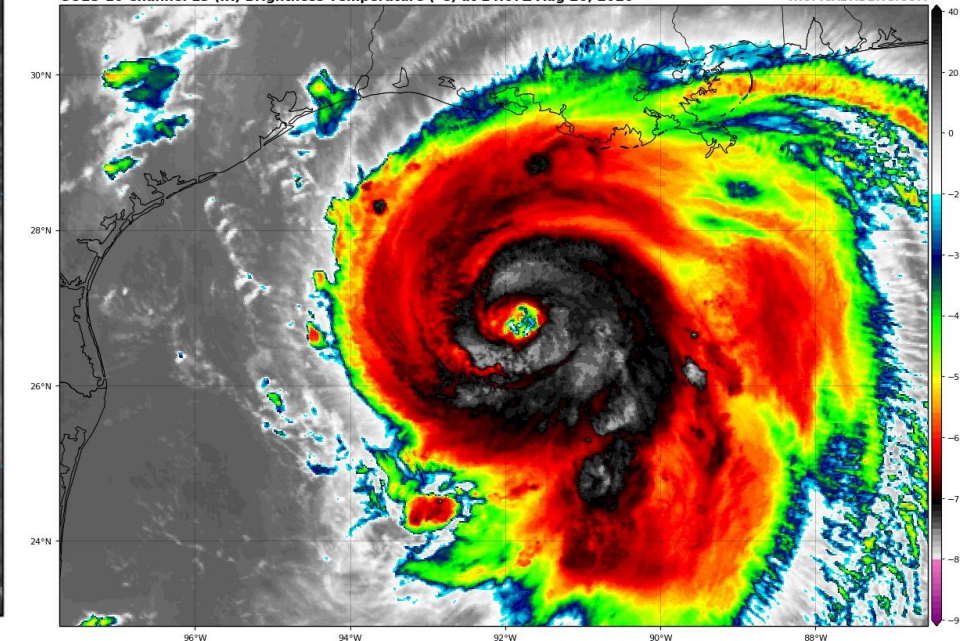
TROPICALTIDBITS.COM



Laura has a well-defined eye and is much more symmetric than yesterday. Laura has rapidly intensified over the last 24 hours and is now the first major hurricane of the 2020 Atlantic Hurricane Season. Further rapid intensification is expected today, and Laura could reach Category 4 intensity later today.

GOES-16 Channel 13 (IR) Brightness Temperature (°C) at 14:07Z Aug 26, 2020

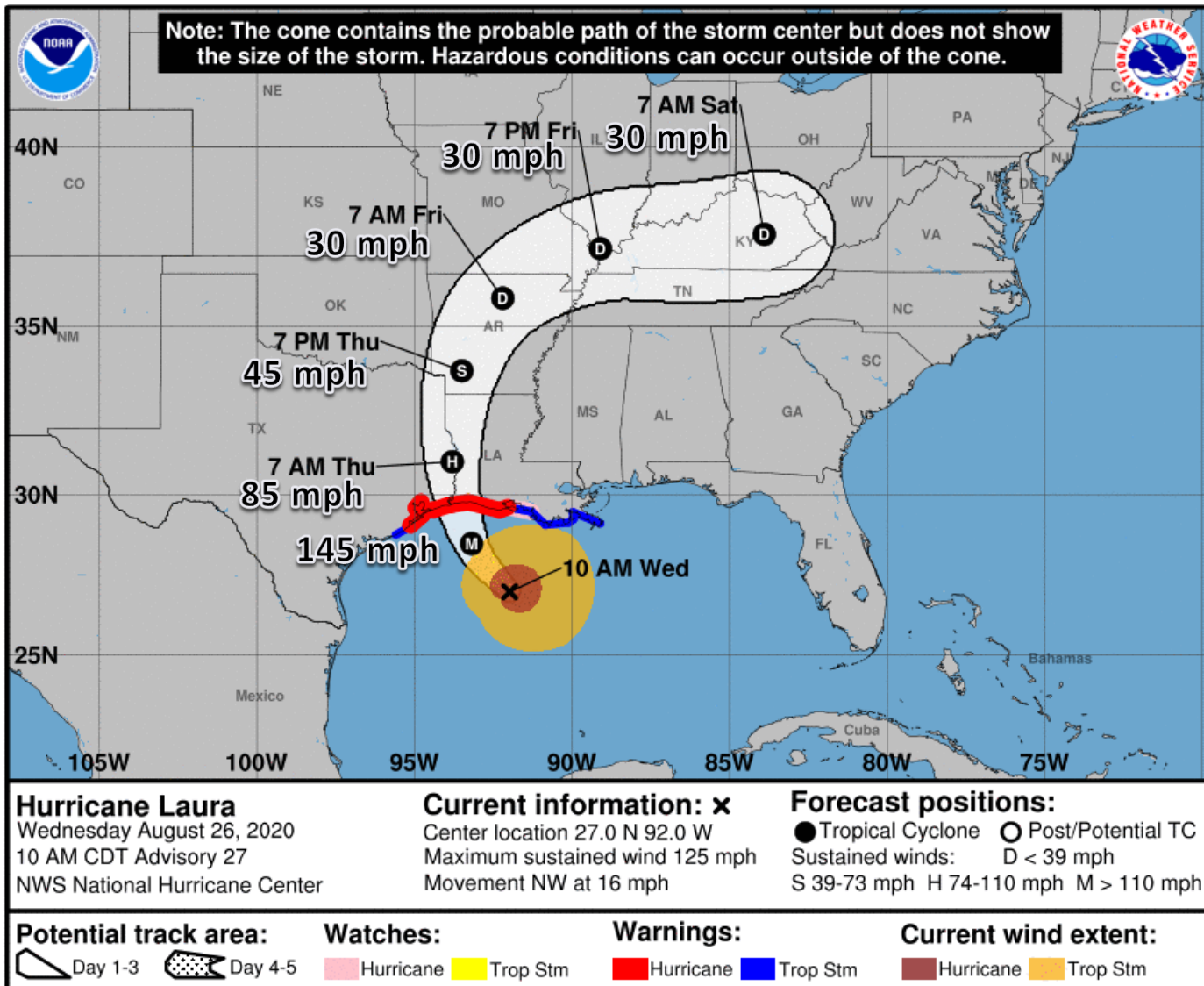
TROPICALTIDBITS.COM





Official Forecast Track

From the National Hurricane Center – Major Hurricane Laura

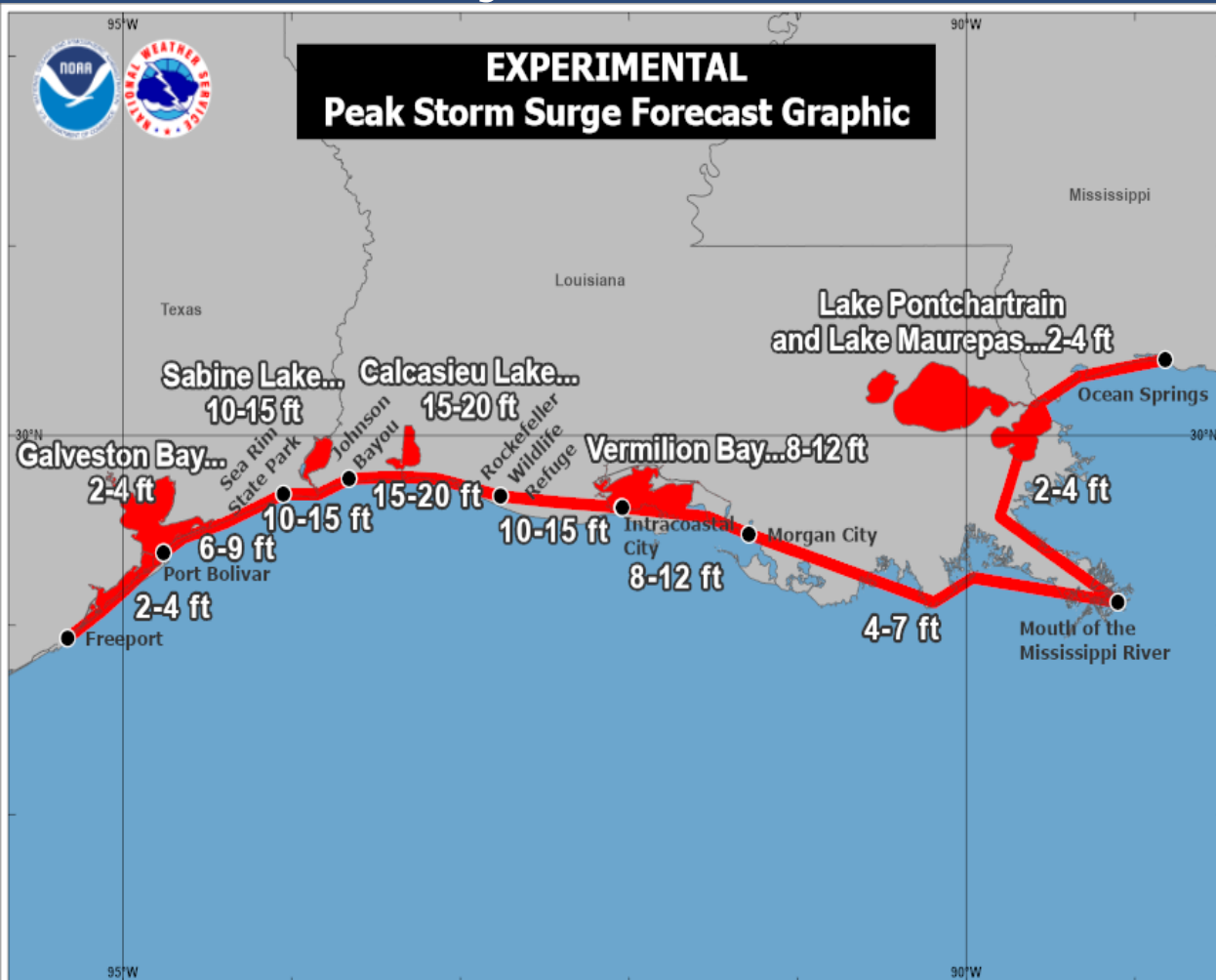


- Laura continues to rapidly intensify, and further rapid intensification is forecast until landfall.
- The center of Major Hurricane Laura is located 225 miles south-southeast of Lake Charles, Louisiana, moving northwest at 16 mph.
- Maximum sustained winds are near 125 mph, making Laura an extremely dangerous Category 3 Hurricane.
- Rapid intensification is likely to continue today, and Laura is forecast to be a potentially catastrophic Category 4 hurricane at landfall near the Texas/Louisiana border tonight.
- Catastrophic storm surge, extreme winds, and flash flooding are expected tonight.
- Hurricane and Storm Surge Warnings are in effect for Texas and Louisiana. Tropical Storm Warnings are in effect for parts of Arkansas.



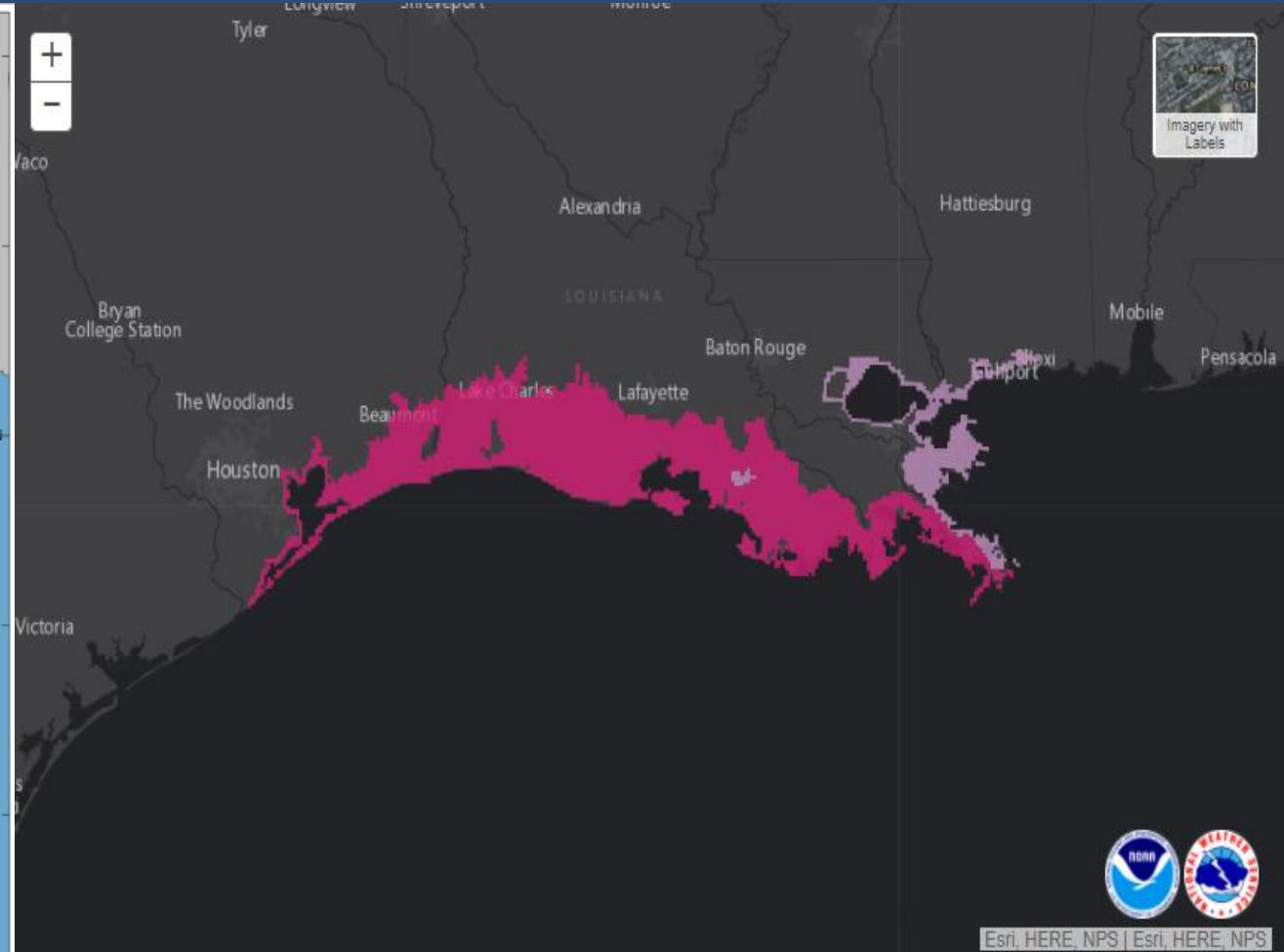
Storm Surge Forecast, Watches & Warnings

Major Hurricane Laura



Hurricane Laura
Wednesday August 26, 2020
10 AM CDT Advisory 27
NWS National Hurricane Center

The combination of a dangerous storm surge and the tide will cause normally dry areas near the coast to be flooded by rising waters moving inland from the shoreline. The water could reach the following heights above ground somewhere within the indicated areas if the peak surge occurs at the time of high tide. The deepest water will occur along the immediate coast near the landfall location, where the surge will be accompanied by large and destructive waves. Surge-related flooding depends on the relative timing of the surge and the tidal cycle, and can vary greatly over short distances.



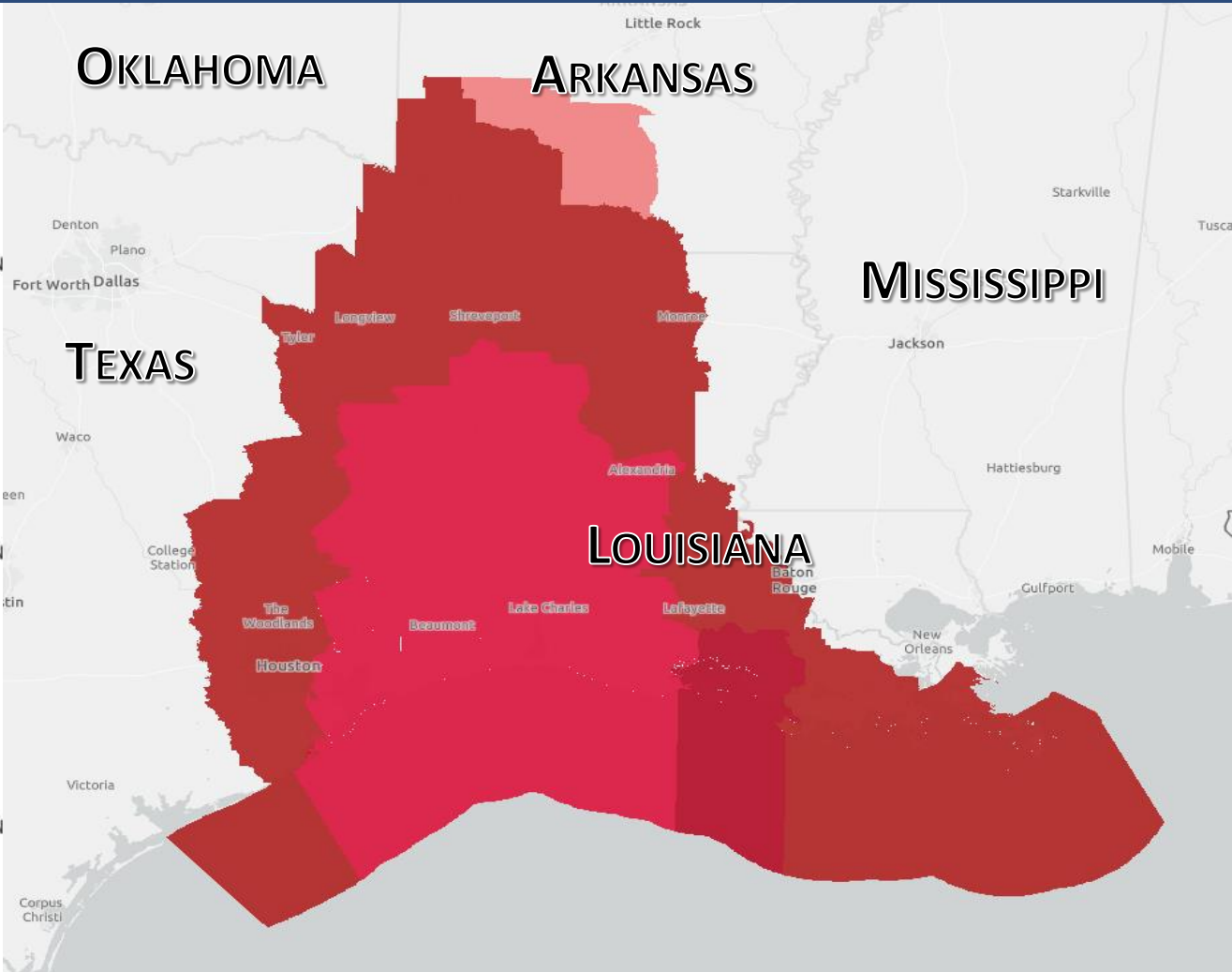
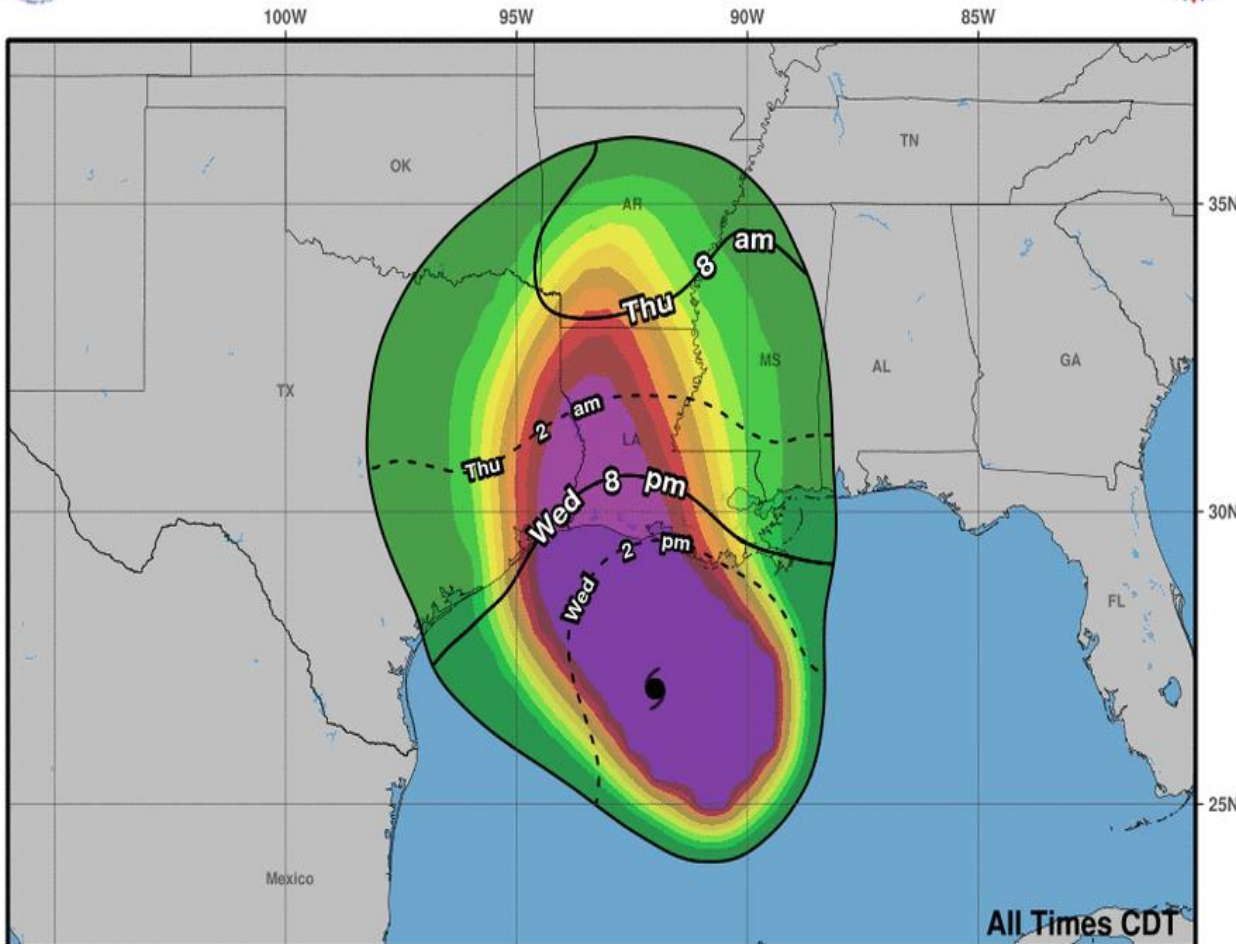
Storm Surge Warning
Storm Surge Watch



Wind Timing & Wind Watches & Warnings

Major Hurricane Laura

0-3 Day Most Likely Arrival Time of Tropical-Storm-Force Winds



Hurricane Laura
Wed. Aug. 26, 2020 10 am CDT
Advisory 27

Storm Location ○ < 34 kt (39 mph)
& ○ 34-63 kt (39-73 mph)
Wind Speed ● ≥ 64 kt (74 mph)

3-day chance of receiving sustained 34+ kt (39+ mph) winds

5	10	20	30	40	50	60	70	80	90	100 %
5	10	20	30	40	50	60	70	80	90	100 %

Hurricane Warning
Tropical Storm Warning | Tropical Storm Watch

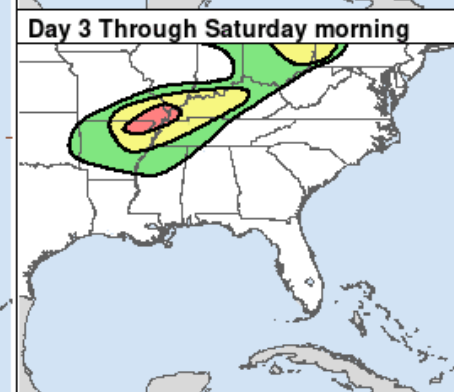
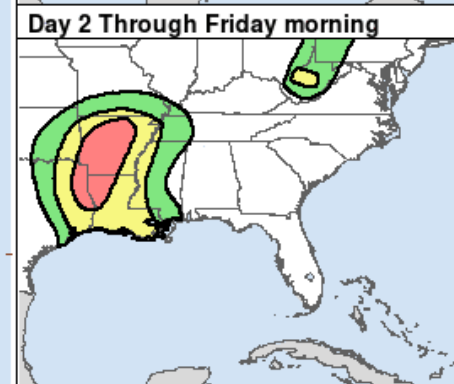
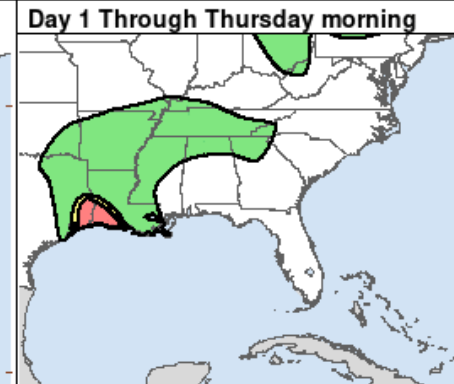
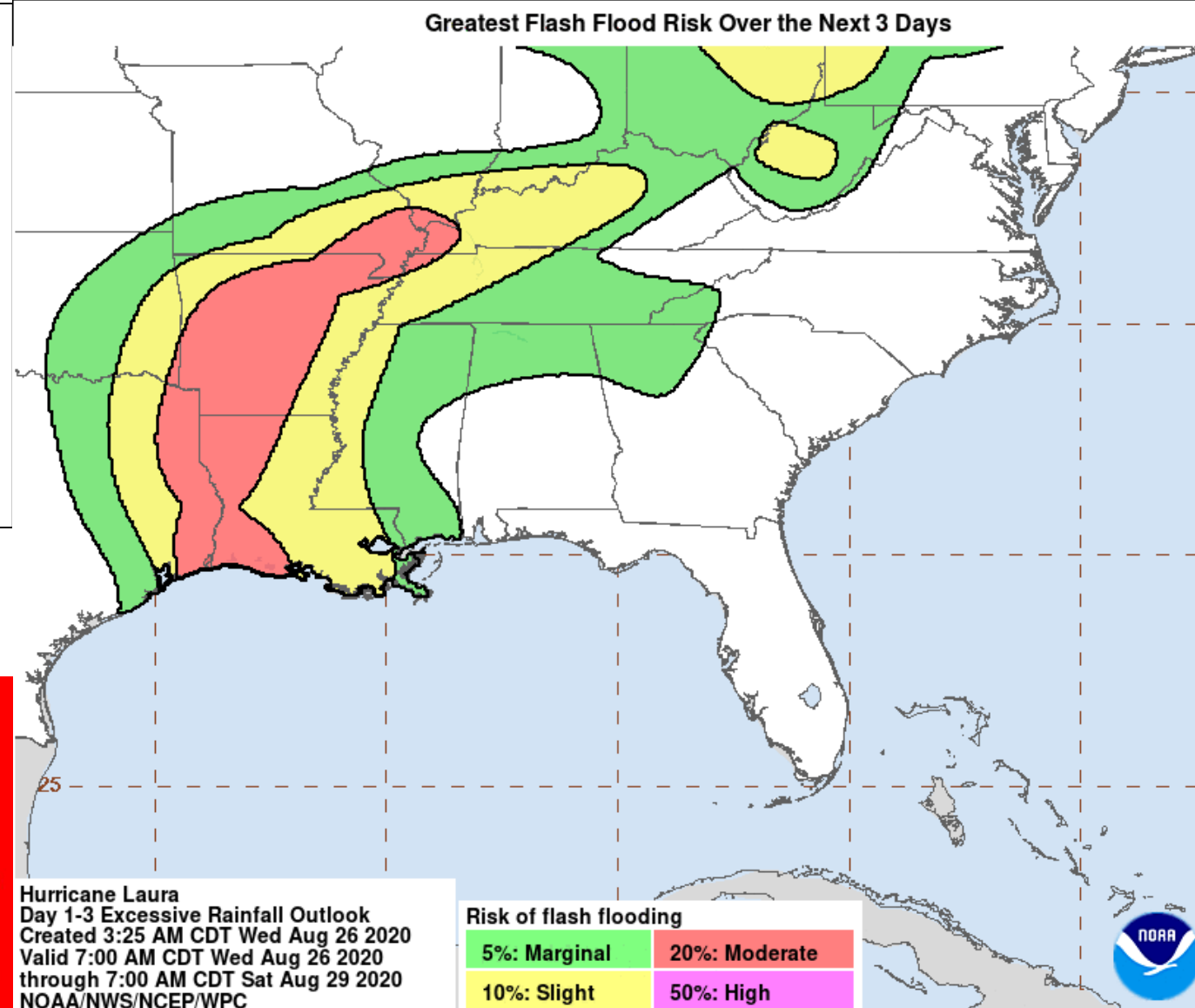


Flash Flood Outlook

3-Day Event Summary

Rainfall totals of 4-8" are likely from the Texas and Louisiana coastline through Arkansas into southeast Missouri. Localized totals of 12" or more are possible.

Flash flooding is likely in these areas.



MARGINAL (MRGL)	SLIGHT (SLGT)	MODERATE (MDT)
Isolated flash floods possible	Scattered flash floods possible	Numerous flash floods likely
Localized and primarily affecting places that can experience rapid runoff with heavy rainfall.	Mainly localized. Most vulnerable are urban areas, roads, small streams and washes. Isolated significant flash floods possible.	Numerous flash flooding events with significant events possible. Many streams may flood, potentially affecting larger rivers.

Risk of flash flooding

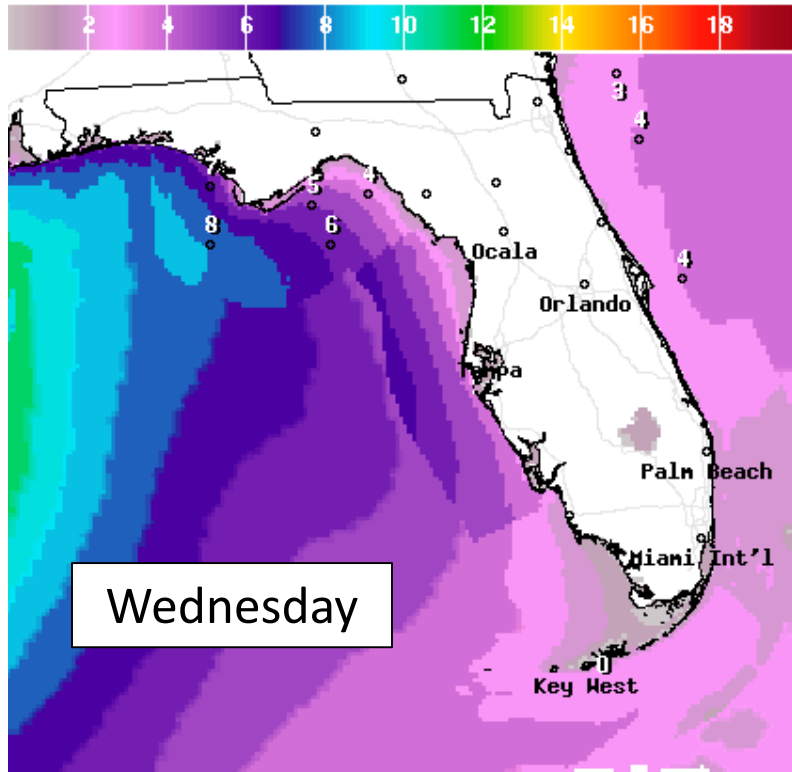
5%: Marginal	20%: Moderate
10%: Slight	50%: High





Forecast Wave Heights

Mid-Week

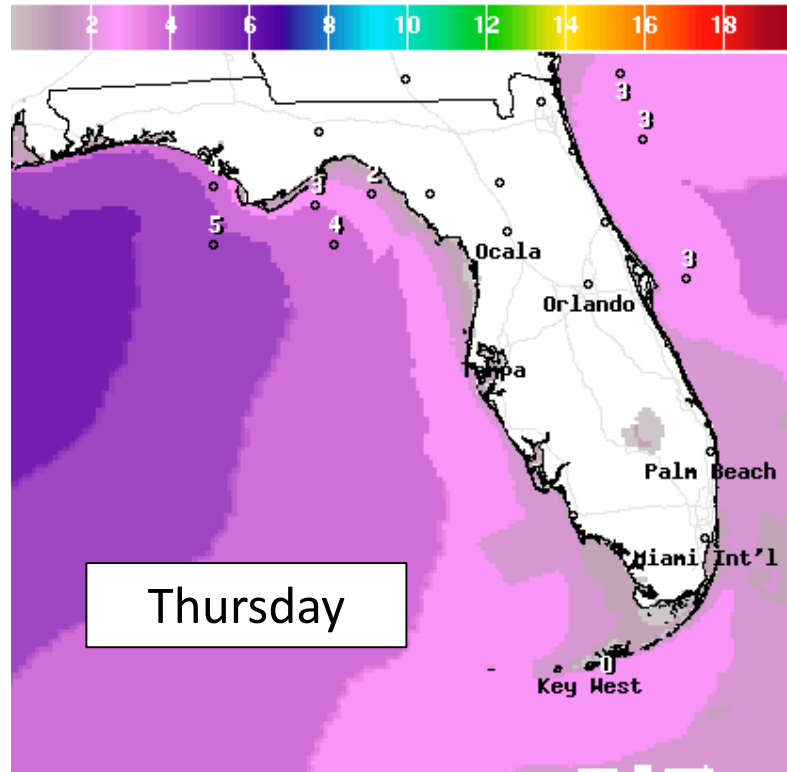


Wave Height(ft) Ending Wed Aug 26 2020 2PM EDT
(Wed Aug 26 2020 18Z)



National Digital Forecast Database

13z issuance Graphic created-Aug 26 9:23AM EDT

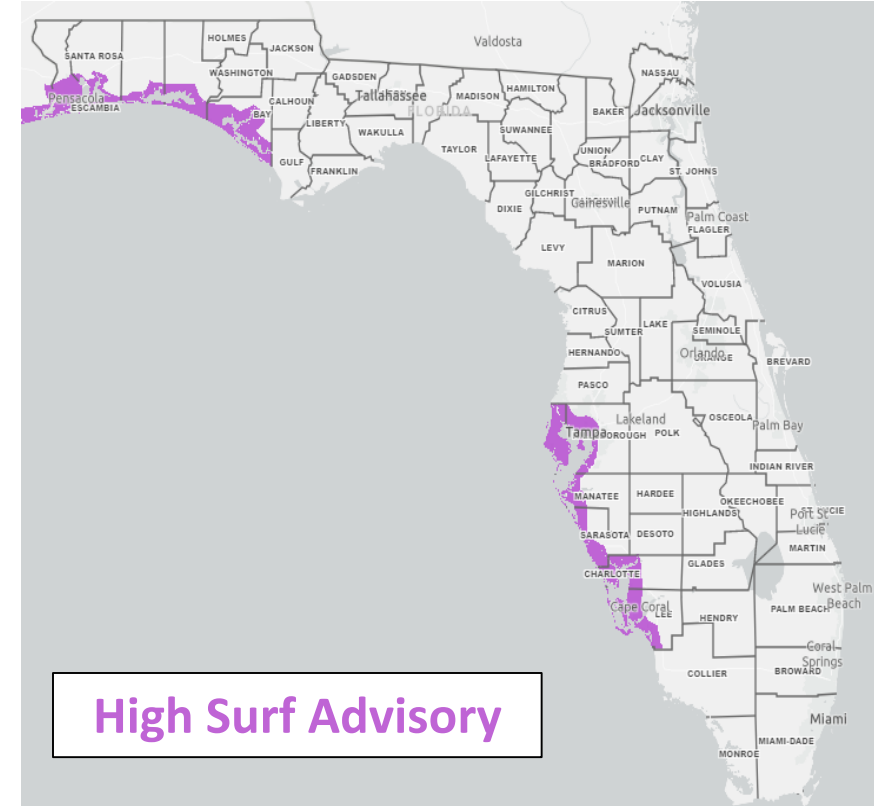


Wave Height(ft) Ending Thu Aug 27 2020 2PM EDT
(Thu Aug 27 2020 18Z)



National Digital Forecast Database

13z issuance Graphic created-Aug 26 9:23AM EDT



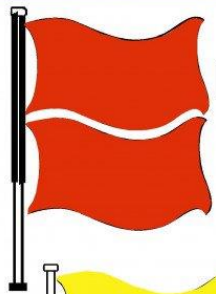
High surf of 4-8 feet is expected at Gulf Coast beaches. 2-4' waves are expected at Atlantic beaches. Minor beach erosion is likely in a few spots.



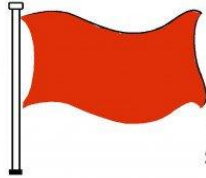
Rip Current Outlook

Today

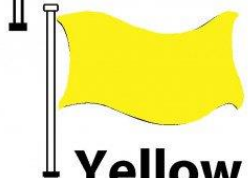
BEACH FLAG WARNING SYSTEM



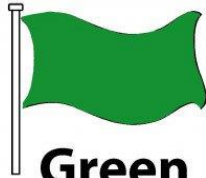
Double Red
Water Closed to
Public Use



Red
High Hazard
(rough conditions,
such as strong surf
and or currents)



Yellow
Medium Hazard
(light surf and or
currents)

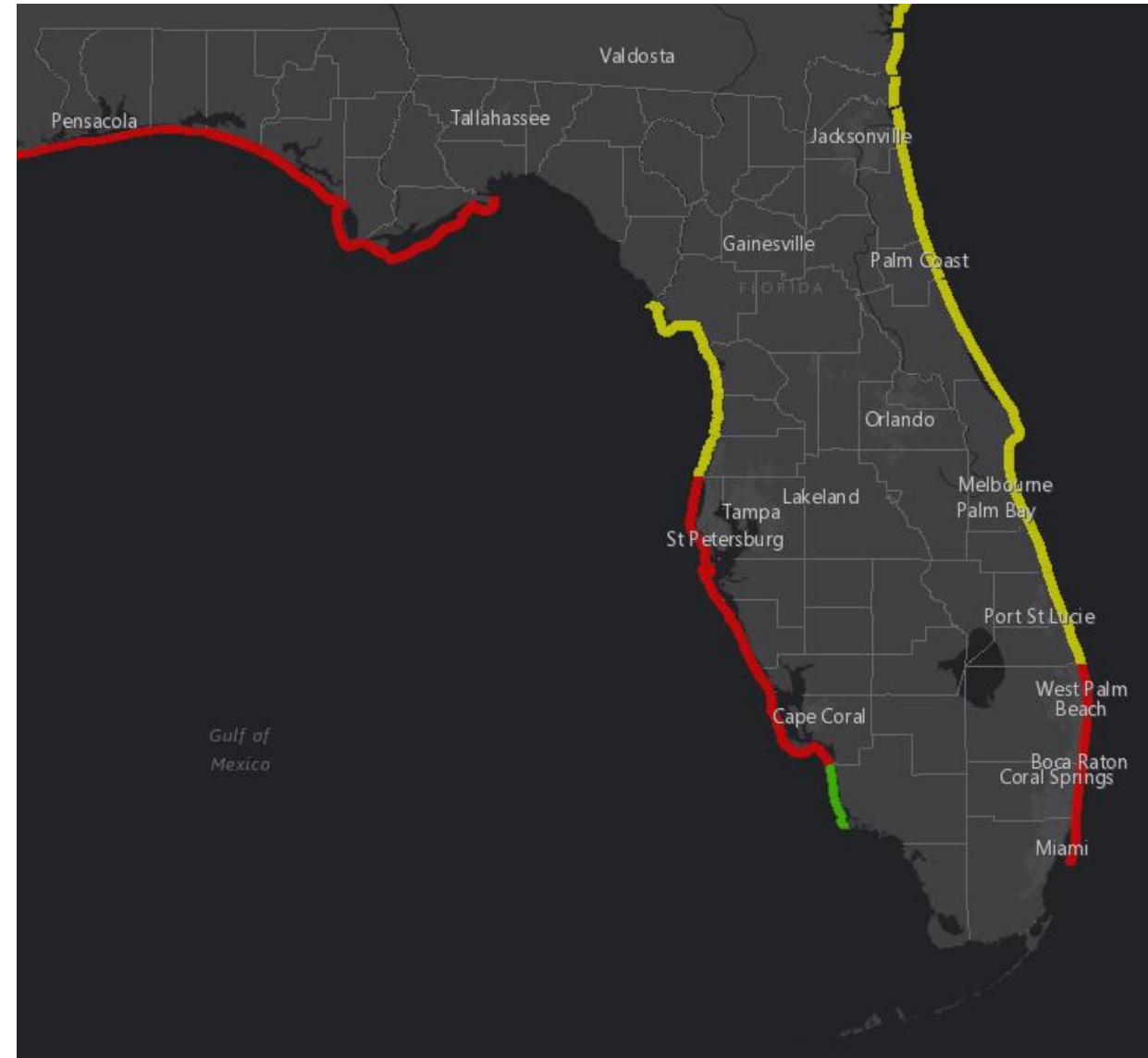


Green
Low Hazard
(calm conditions)



Purple
Marine Pest
(jellyfish, stingrays
& dangerous fish)

Elevated rip current risk statewide, with the greatest threat in the Panhandle.





Overall Summary

Major Hurricane Laura

- Laura rapidly intensified over the last 24 hours and has become the first major hurricane of the 2020 Atlantic Hurricane Season.
- The center of Major Hurricane Laura is located about 225 miles south-southeast of Lake Charles, Louisiana.
- Rapid intensification continues as maximum sustained winds are near 125 mph (Category 3).
- Additional rapid intensification is expected today, and Laura will likely become a Category 4 hurricane before making landfall near the Texas/Louisiana border tonight.
- Hurricane and Storm Surge Warnings are in effect for Texas and Louisiana. Tropical Storm Warnings are in effect northward into Arkansas.

Florida Outlook:

- Nuisance coastal flooding at high tide over the next few days is possible in the Panhandle and Big Bend, with tides running about 1 to 1.5' above normal.
- Dangerous rip currents and high surf are expected at all Florida beaches, but particularly in the Gulf. Minor beach erosion is expected to continue in the wake of Marco. High Surf Advisories are in effect for Panhandle and West Coast beaches.

For more details on impacts to Texas, Louisiana, and Arkansas from Hurricane Laura, please visit the National Hurricane Center, or the local Weather Service Offices at www.weather.gov.

The next briefing packet will be issued Thursday Morning with the 11 AM advisory. For the latest information on the tropics, please visit the National Hurricane Center website at www.hurricanes.gov.



TROPICAL UPDATE



Created by:

Cameron Young, Assistant State Meteorologist

Cameron.Young@em.myflorida.com

State Meteorological Support Unit

Florida Division of Emergency Management

Users wishing to subscribe (approval pending) to this distribution list, register at:

https://public.govdelivery.com/accounts/FLDEM/subscriber/new?topic_id=SERT_Met_Tropics.

Other reports available for subscription are available at:

<https://public.govdelivery.com/accounts/FLDEM/subscriber/new?preferences=true>