



TROPICAL UPDATE



7:00 AM EDT

Friday, August 21, 2020

Tropical Depression #13 – Near Lesser Antilles

Tropical Depression #14 – Western Caribbean

Tropical Wave Near Africa (50%)

This update is intended for government and emergency response officials, and is provided for informational and situational awareness purposes only. Forecast conditions are subject to change based on a variety of environmental factors. For additional information, or for any life safety concerns with an active weather event please contact your County Emergency Management or Public Safety Office, local National Weather Service forecast office, or visit the National Hurricane Center website at www.hurricanes.gov.



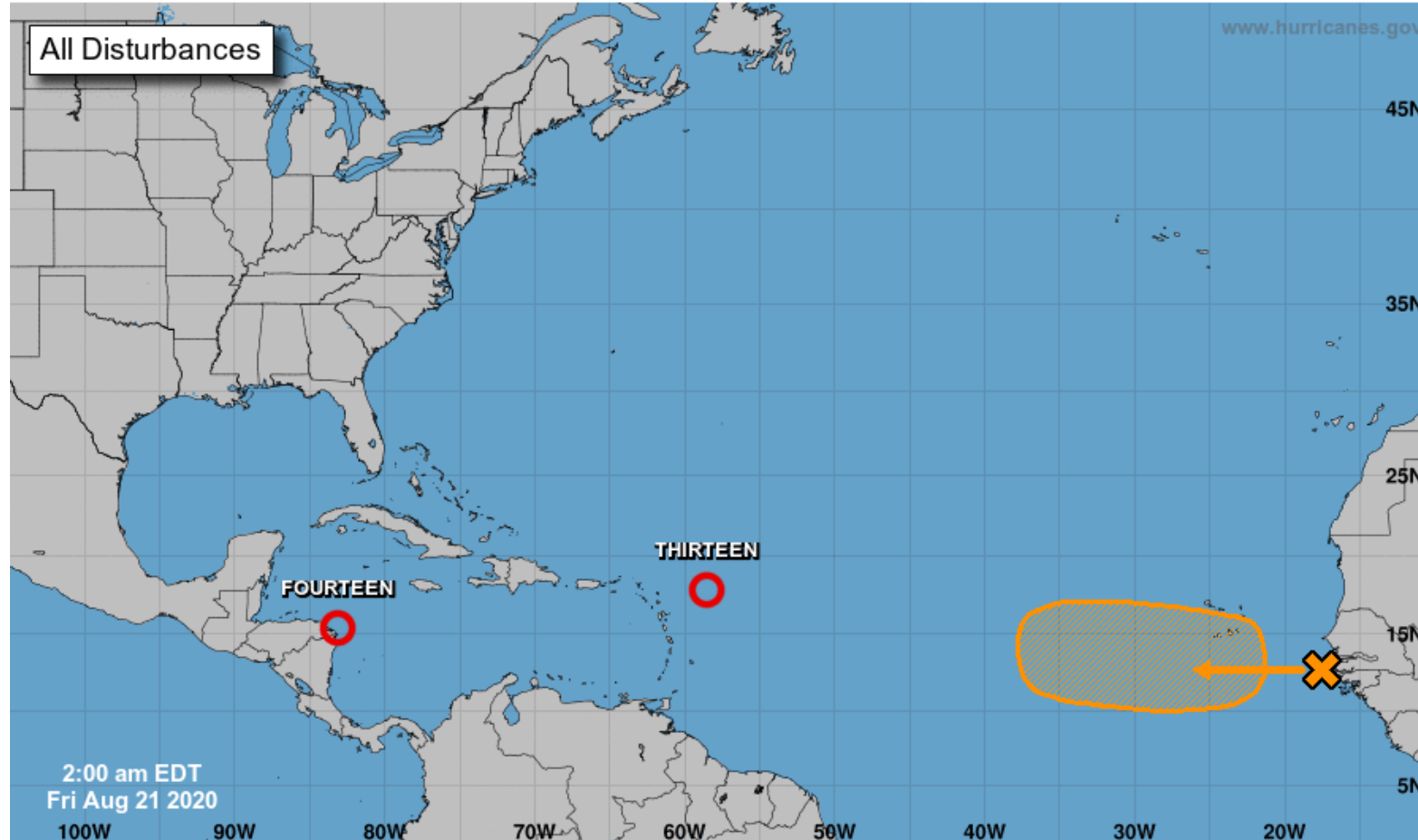
Tropical Weather Outlook

Possible Areas of Development During the Next 5 Days ([LINK](#))



Five-Day Graphical Tropical Weather Outlook

National Hurricane Center Miami, Florida



Current Disturbances and Five-Day Cyclone Formation Chance: < 40% 40-60% > 60%

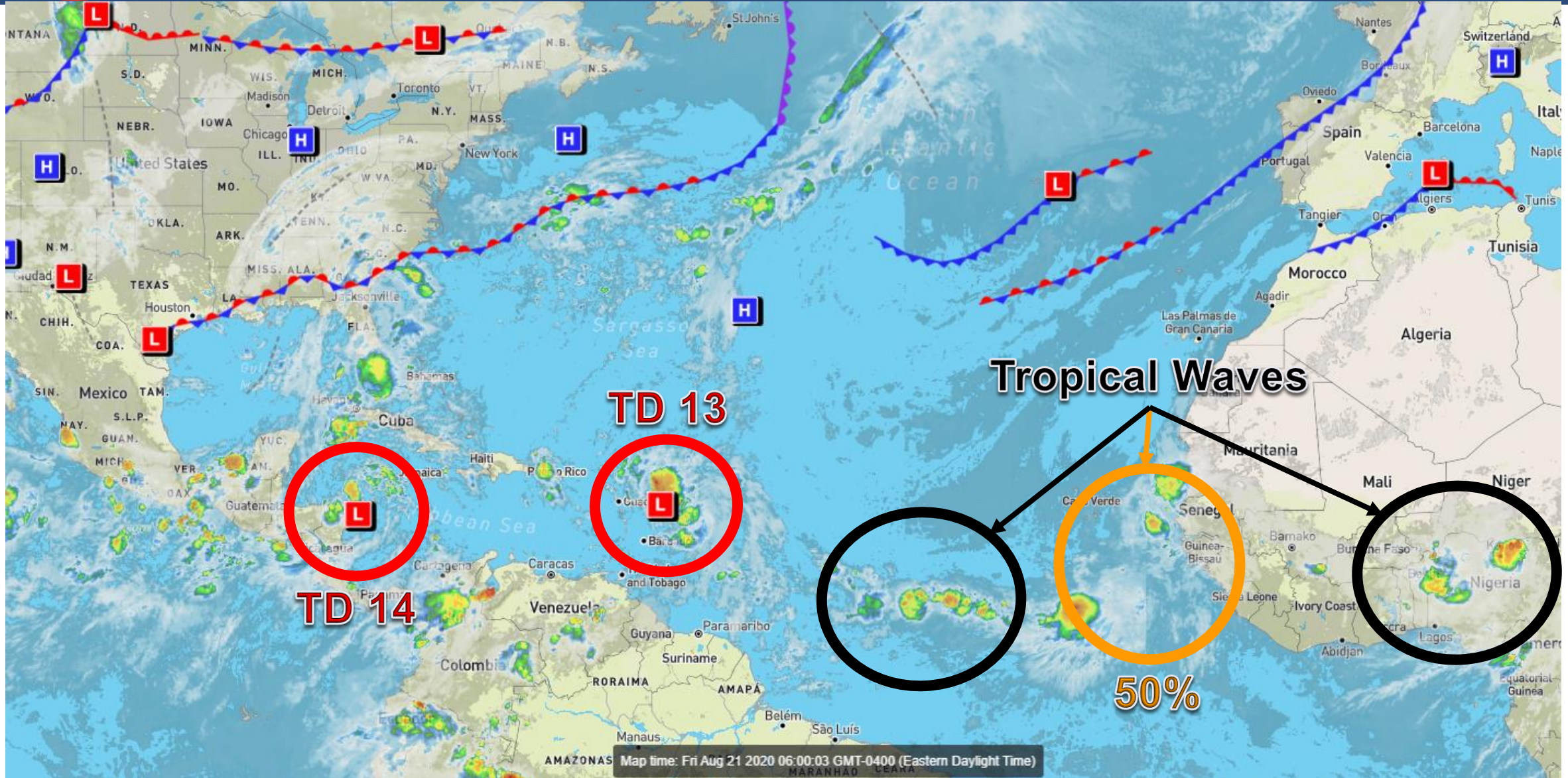
Tropical or Sub-Tropical Cyclone: Depression Storm Hurricane

Post-Tropical Cyclone or Remnants



Atlantic Basin Satellite Image

Chance of development: — None — Low — Medium — High





Steering Currents

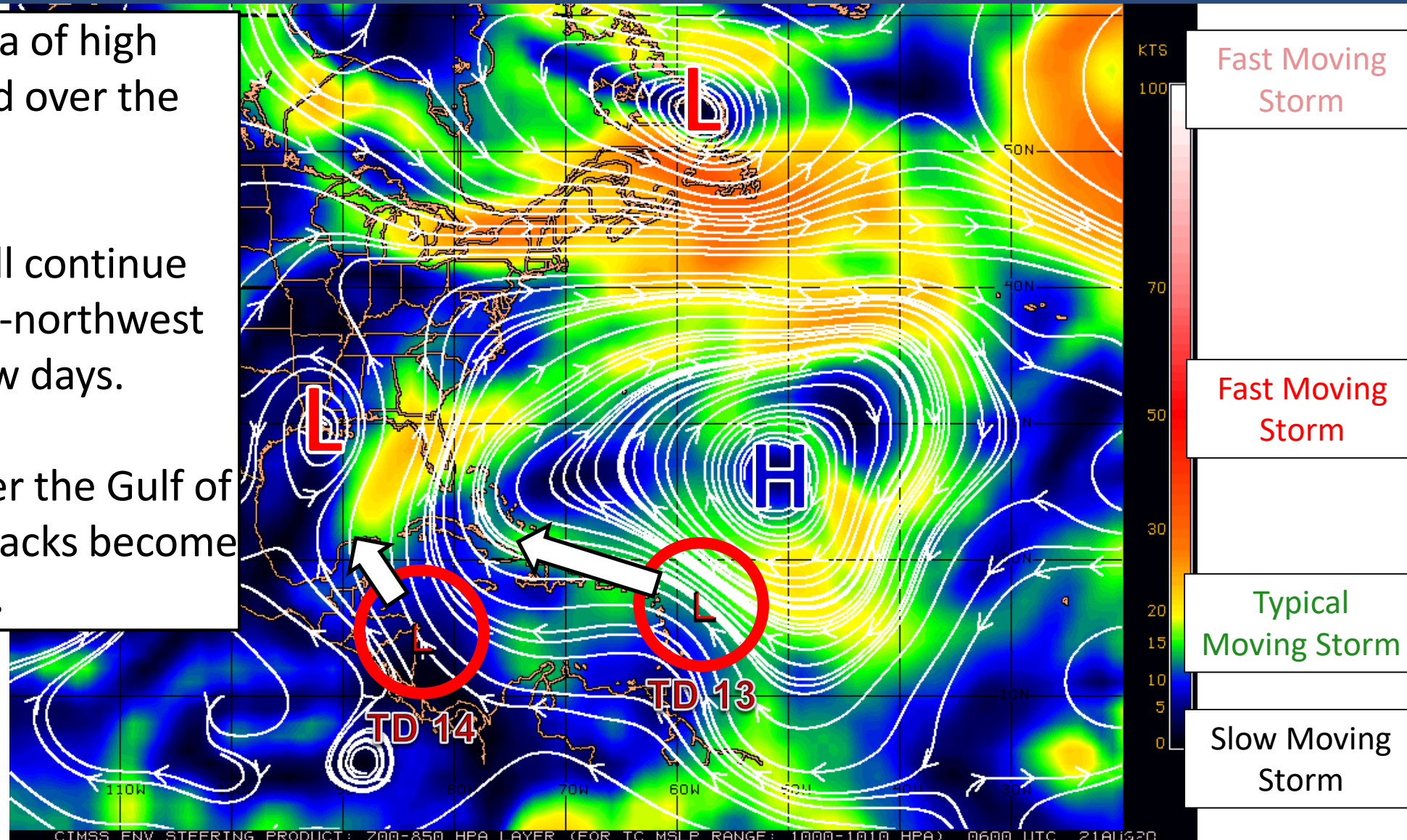
What is moving the systems?

Color denotes the movement speed through the atmosphere and thin white lines denote direction. Tightly clustered white lines represent faster movement as well.

A large, strong area of high pressure is centered over the Atlantic.

The two systems will continue moving west or west-northwest over the next few days.

Once the systems enter the Gulf of Mexico, the forecast tracks become uncertain.



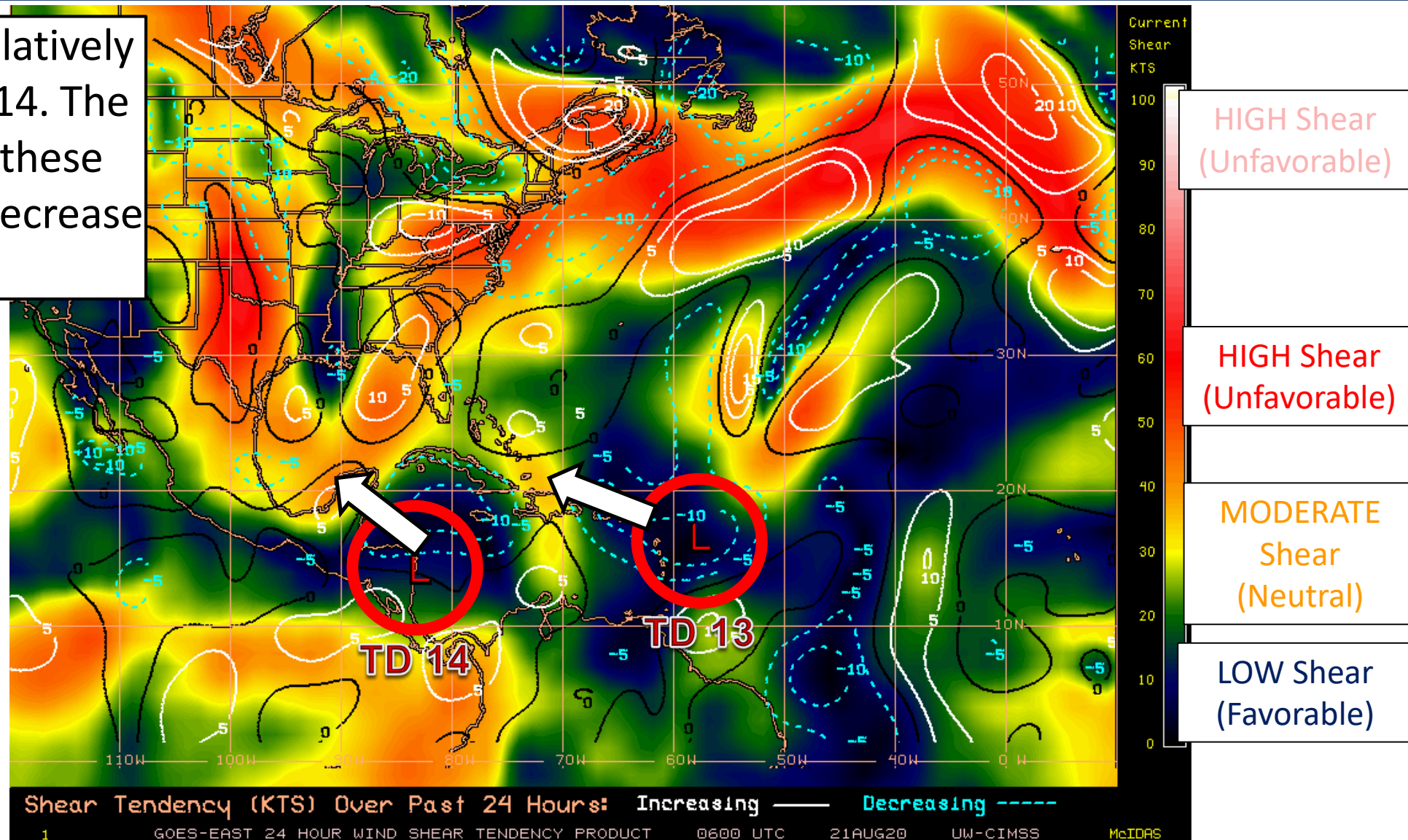


Wind Shear

Is the environment favorable for the systems?

Color denotes the amount of wind shear and the lines denote how it have changed over the last 24 hours (dotted lines show decreasing shear and solid lines show increasing).

Wind shear remains relatively light near TD 13 & TD 14. The wind shear ahead of these systems is forecast to decrease somewhat.

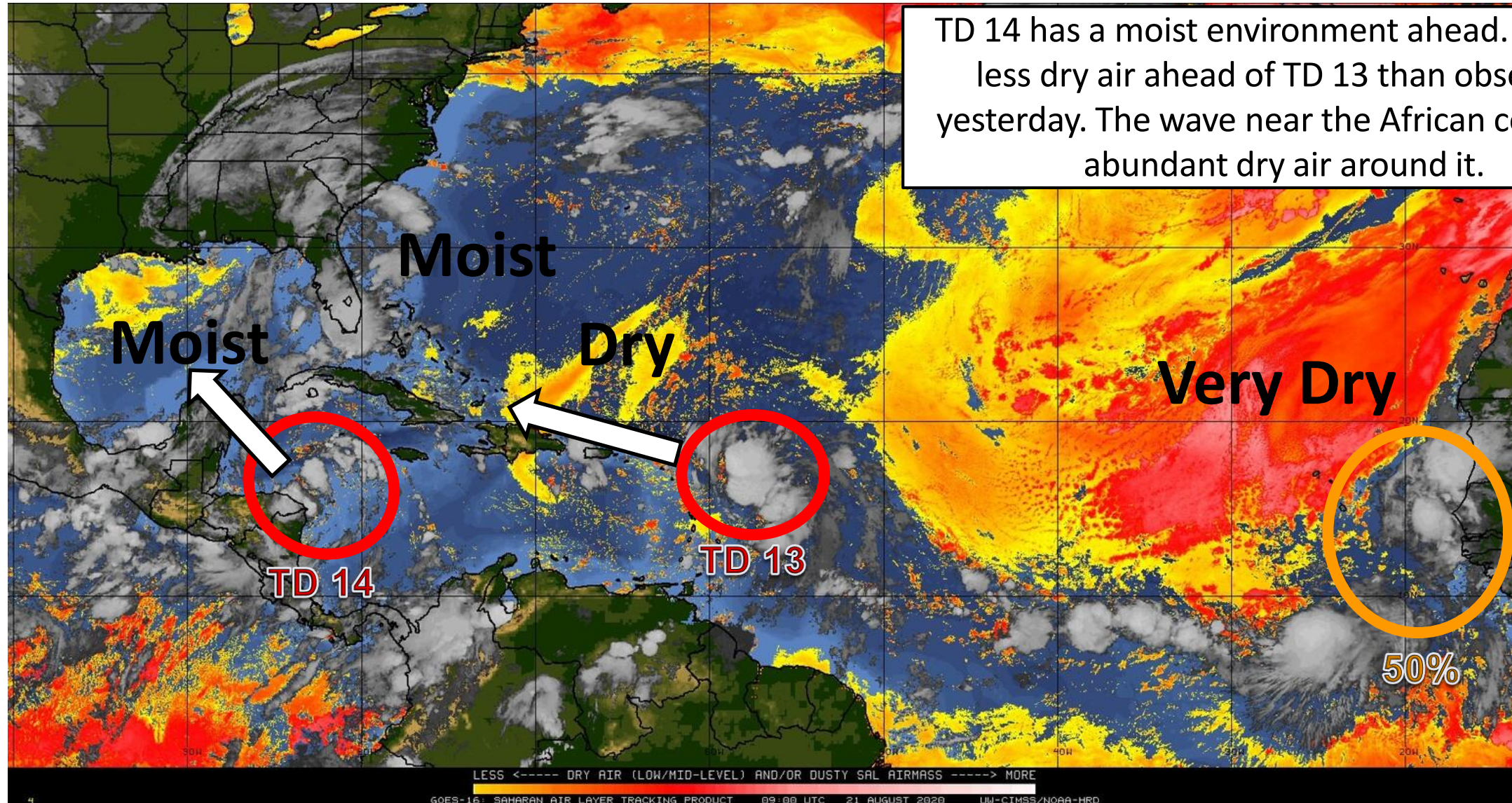




Dry Air & Saharan Dust

Is the environment favorable for the systems?

Color denotes concentration of Saharan Dust or dry, stable air.



TD 14 has a moist environment ahead. There is less dry air ahead of TD 13 than observed yesterday. The wave near the African coast has abundant dry air around it.



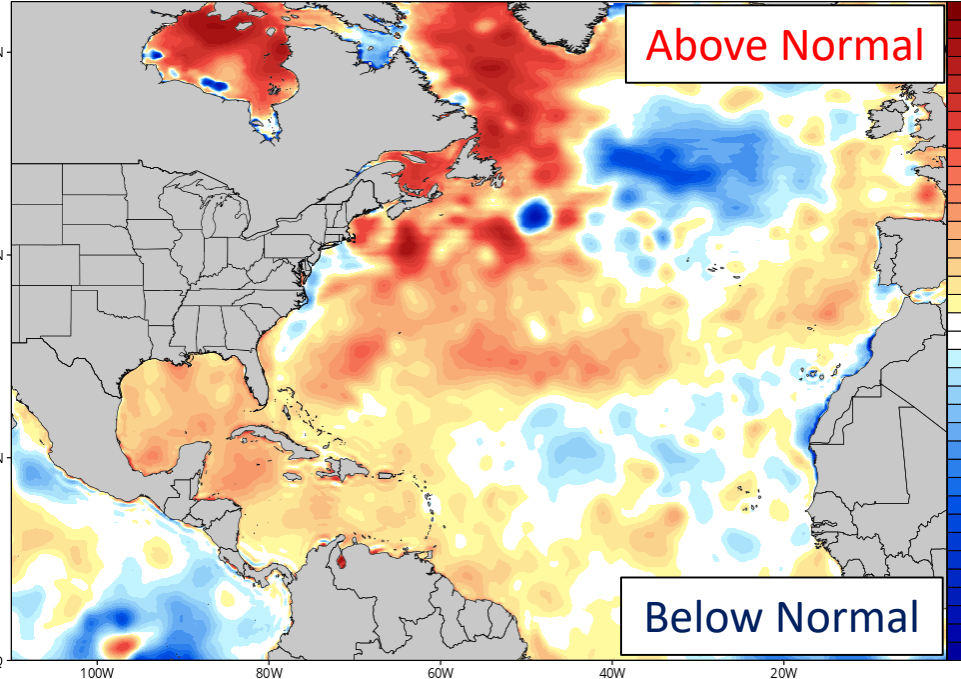
Sea Surface Temperatures & Anomalies

Is the ocean favorable for the systems?

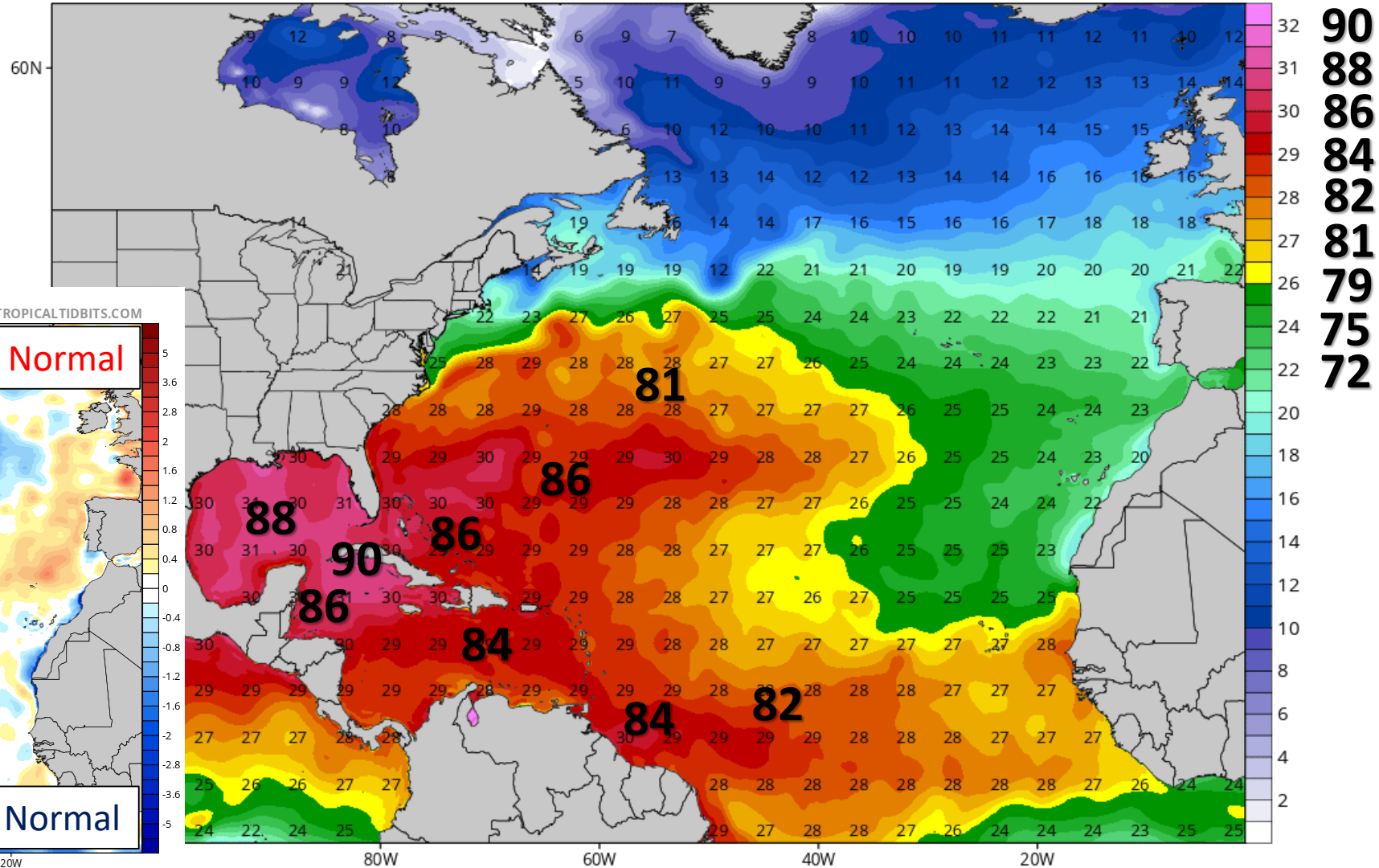
Water temperatures will warm the further west the tropical waves move.

Water temperatures are above normal across much of the Atlantic, Caribbean, and Gulf of Mexico, supporting tropical development.

CDAS Sea Surface Temperature Anomaly (°C) (based on CFSR 1981-2010 Climatology)
Analysis Time: 00z Aug 21 2020



CDAS Sea Surface Temperature (°C)
Analysis Time: 00z Aug 21 2020



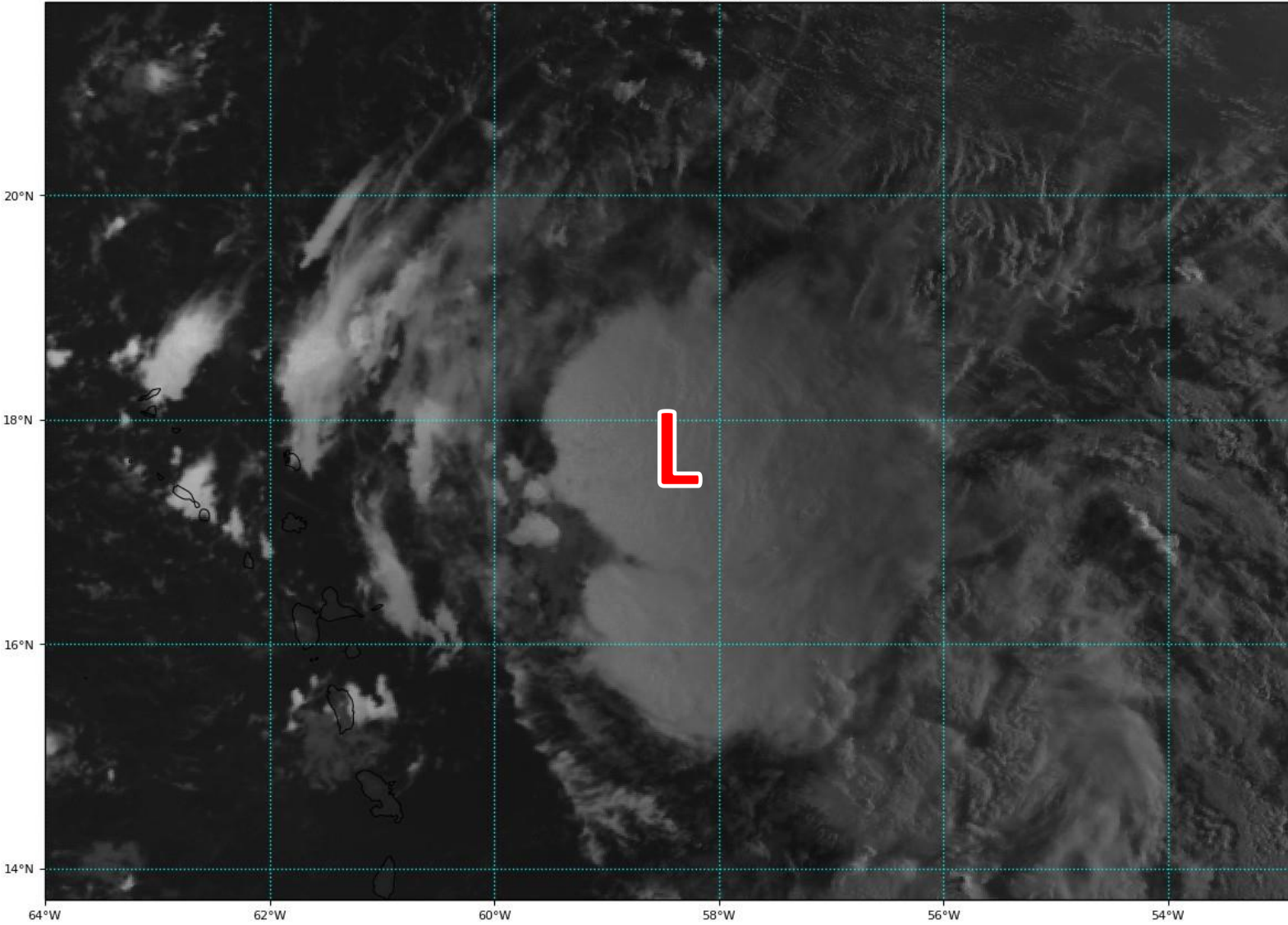


Satellite Imagery

Central Atlantic – Tropical Depression #13

GOES-16 Channel 2 (visible) / Channel 7 (shortwave IR) [Day/Night] at 09:55Z Aug 21, 2020

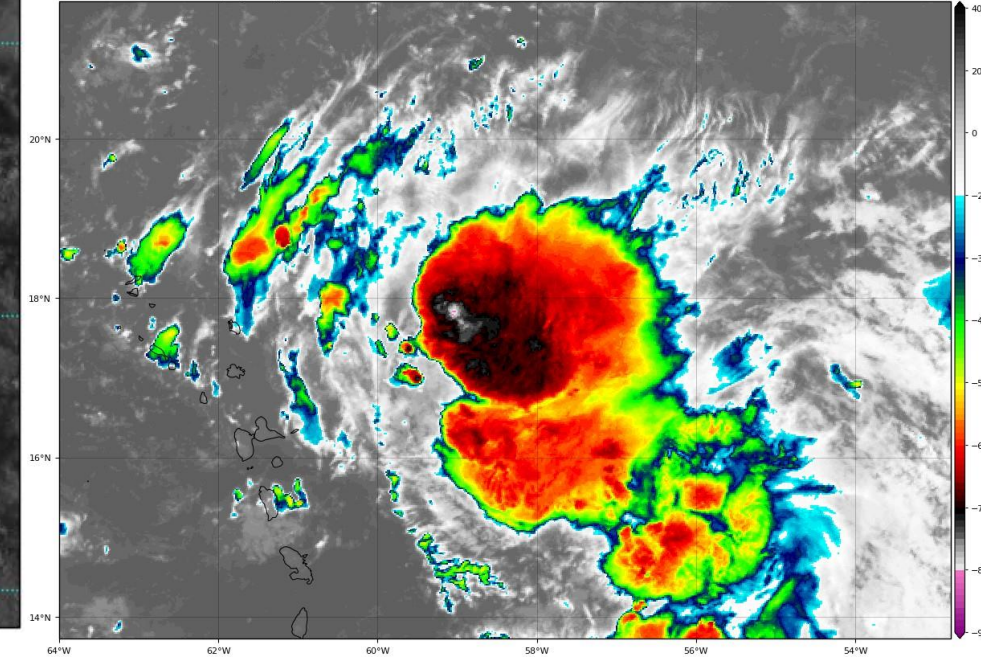
TROPICALTIDBITS.COM



Tropical Depression #13 continues to struggle with organization this morning, but thunderstorms are trying to establish themselves over the center of the storm.

GOES-16 Channel 13 (IR) Brightness Temperature (°C) at 09:55Z Aug 21, 2020

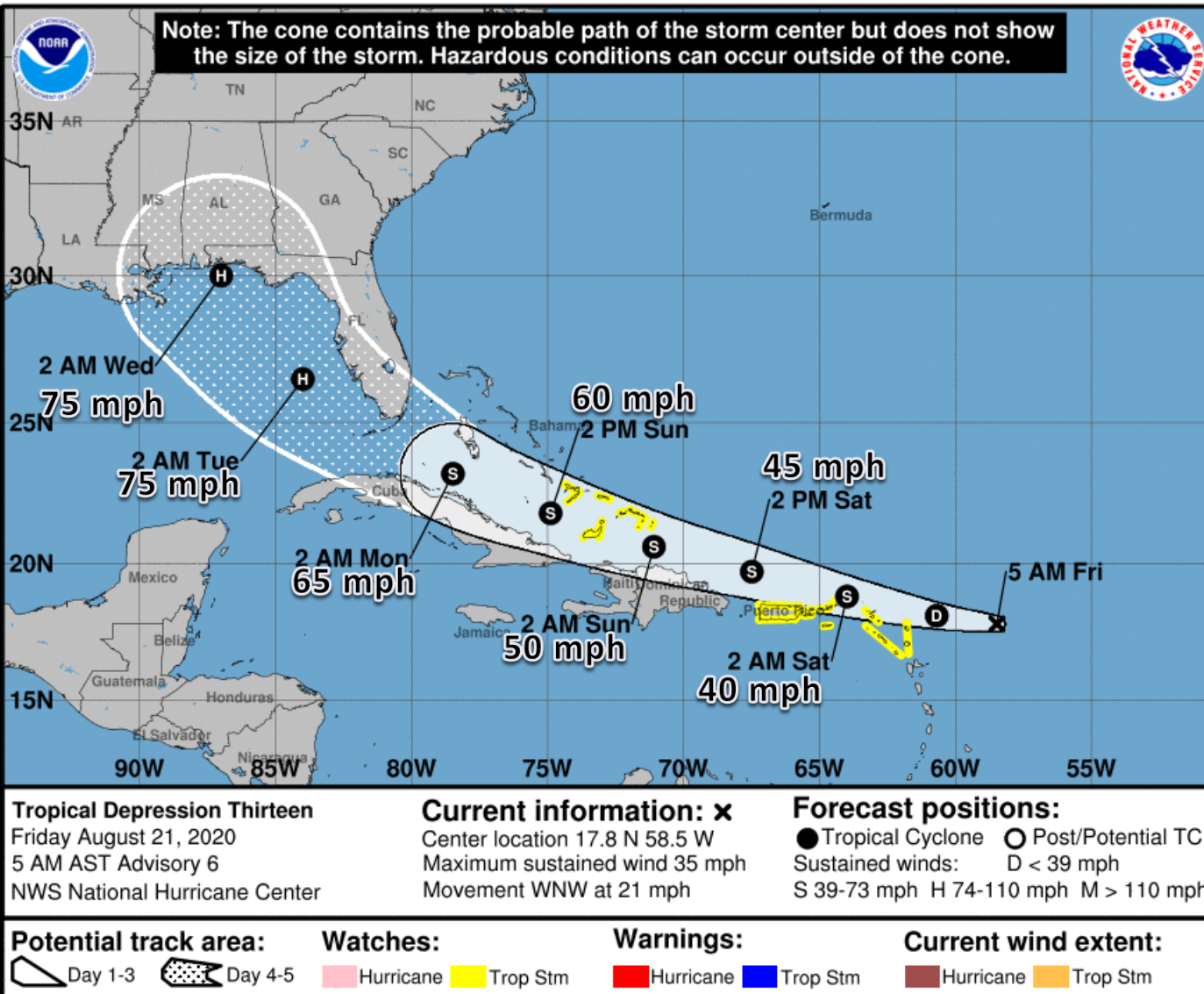
TROPICALTIDBITS.COM





Official Forecast Track

From the National Hurricane Center – Tropical Depression #13

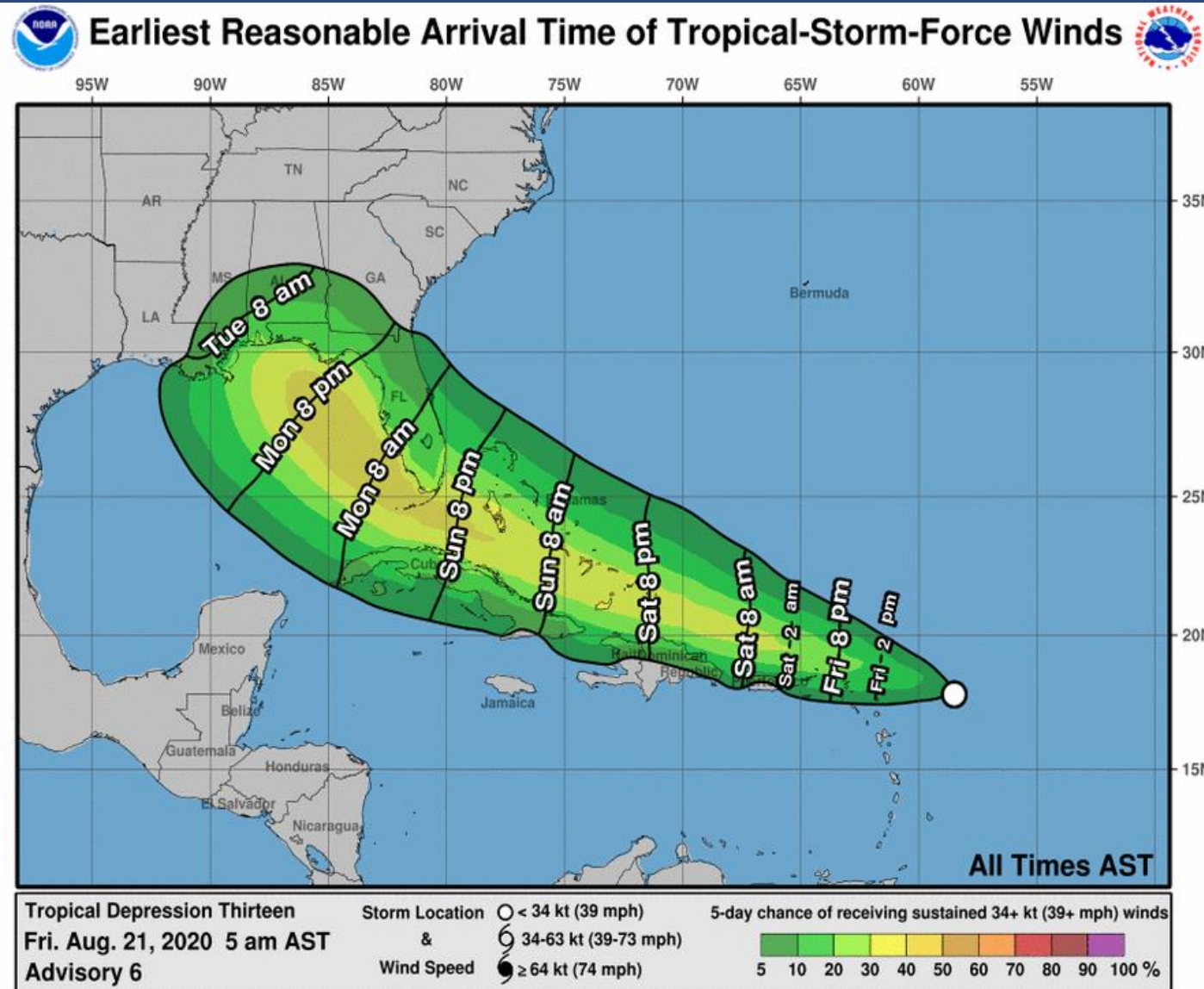


- The center of TD 13 is located about 305 miles east of the northern Leeward Islands.
- Maximum sustained winds remain near 35 mph. Some strengthening is forecast, and TD 13 should become a tropical storm today or tomorrow. TD 13 could become a hurricane by Monday night or Tuesday.
- TD 13 is moving toward the west-northwest at 21 mph, and this general motion is expected over the next few days.
- TD 13 will likely come close to or make landfall in South Florida or Florida Keys on Monday, and could impact the Panhandle or Big Bend on Tuesday or Wednesday.
- There still remains uncertainty in the forecast intensity due to potential land interaction.
- Conditions appear favorable for further development in the Gulf of Mexico. However, if the system gets too close to Tropical Depression 14, changes to track and intensity are possible in the Gulf of Mexico.



Time of Arrival & Wind Speed Probabilities

MOST LIKELY Time of Arrival of Tropical Storm Force Winds (>39 mph)



Key West:	38%	(+4)
Marathon:	42%	(+2)
Miami:	20%	(-5)
Fort Lauderdale:	31%	(-5)
West Palm Beach:	24%	(-6)
Fort Pierce:	18%	(-3)
Orlando:	11%	(-3)
Naples:	39%	(-1)
Fort Myers:	23%	(-3)
Tampa:	31%	(-3)
Cedar Key:	26%	(-4)
Apalachicola:	33%	(+4)
Tallahassee:	14%	(+/-0)
Panama City:	31%	(+5)
Destin:	20%	(+6)
Pensacola:	18%	(+5)

Tropical storm force winds may begin as early as Sunday night in South Florida and the Keys, but will most likely start Monday morning. Tropical storm force winds will be possible Monday night into Tuesday across West Central Florida and the Panhandle and Big Bend.



Key Messages

From the National Hurricane Center



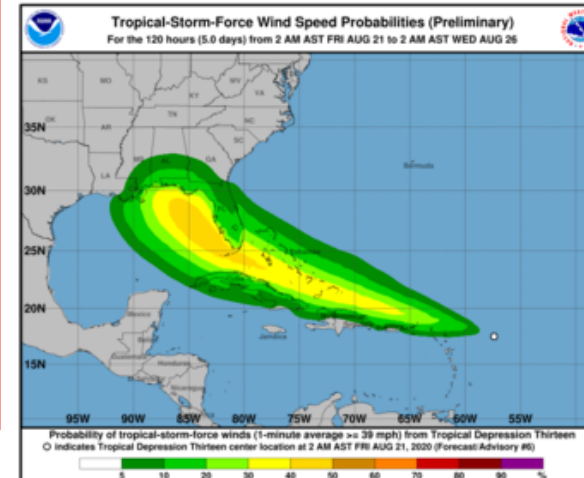
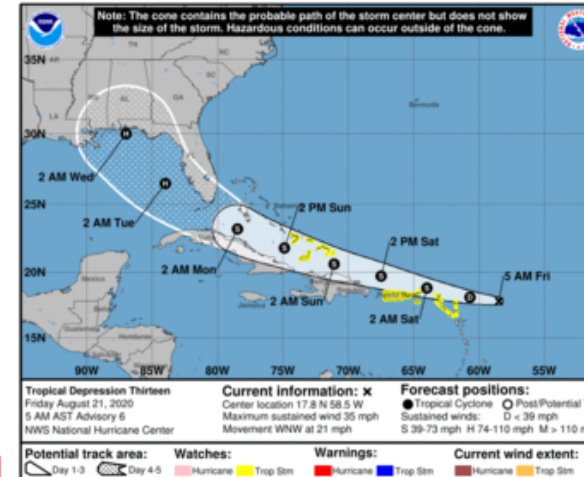
Key Messages for Tropical Depression Thirteen

Advisory 6: 5:00 AM AST Fri Aug 21, 2020



1. Tropical storm conditions are possible across portions of the northern Leeward Islands, the Virgin Islands, Puerto Rico, the southeastern Bahamas, and the Turks and Caicos islands later today through Saturday night, and Tropical Storm Watches have been issued for some of these islands. Heavy rainfall is likely across this area beginning today and could cause mudslides and flash and urban flooding through Sunday.

2. The details of the long-range track and intensity forecasts are more uncertain than usual since the system could move over portions of the Greater Antilles this weekend. However, this system could bring some storm surge, rainfall and wind impacts to portions of Hispaniola, Cuba, the Bahamas, and Florida this weekend and early next week. Interests there should monitor this system's progress and updates to the forecast over the next few days.



For more information go to hurricanes.gov

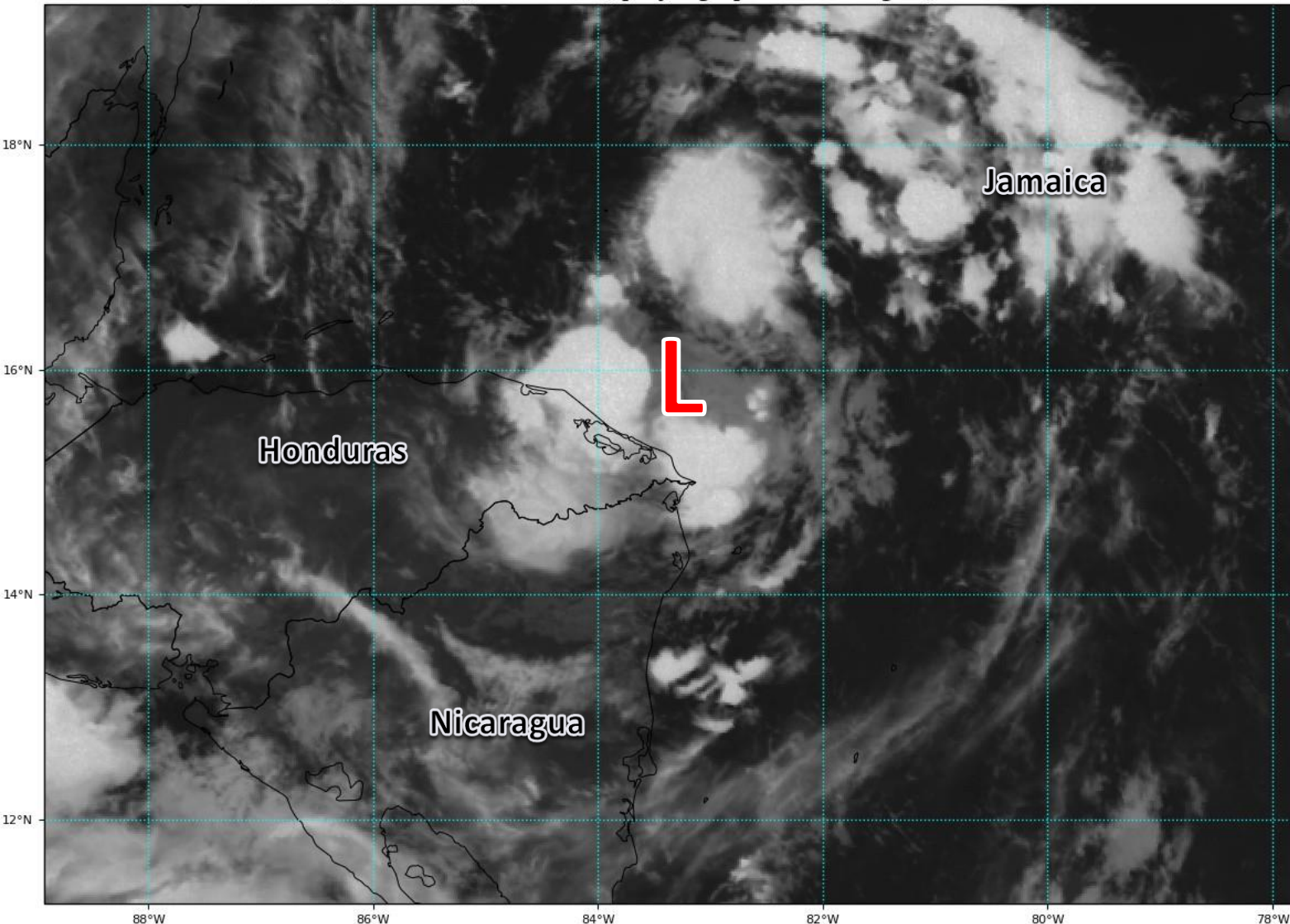


Satellite Imagery

Central Caribbean – Tropical Depression #14

GOES-16 Channel 2 (visible) / Channel 7 (shortwave IR) [Day/Night] at 10:15Z Aug 21, 2020

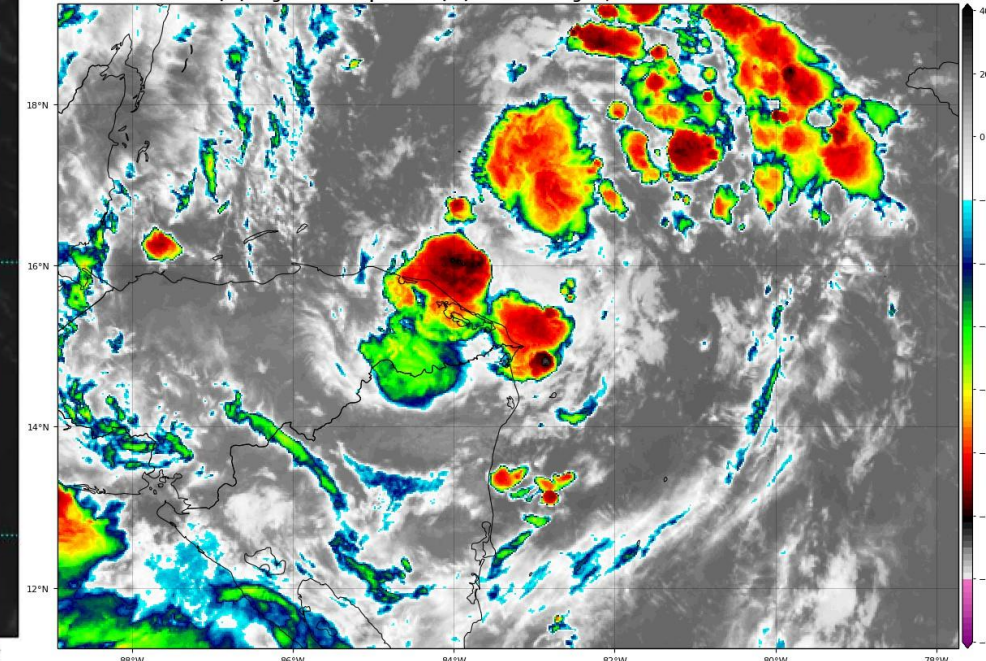
TROPICALTIDBITS.COM



Tropical Depression #14 is still struggling somewhat with its organization, but conditions are favorable for further develop as long as it remains offshore.

GOES-16 Channel 13 (IR) Brightness Temperature (°C) at 10:15Z Aug 21, 2020

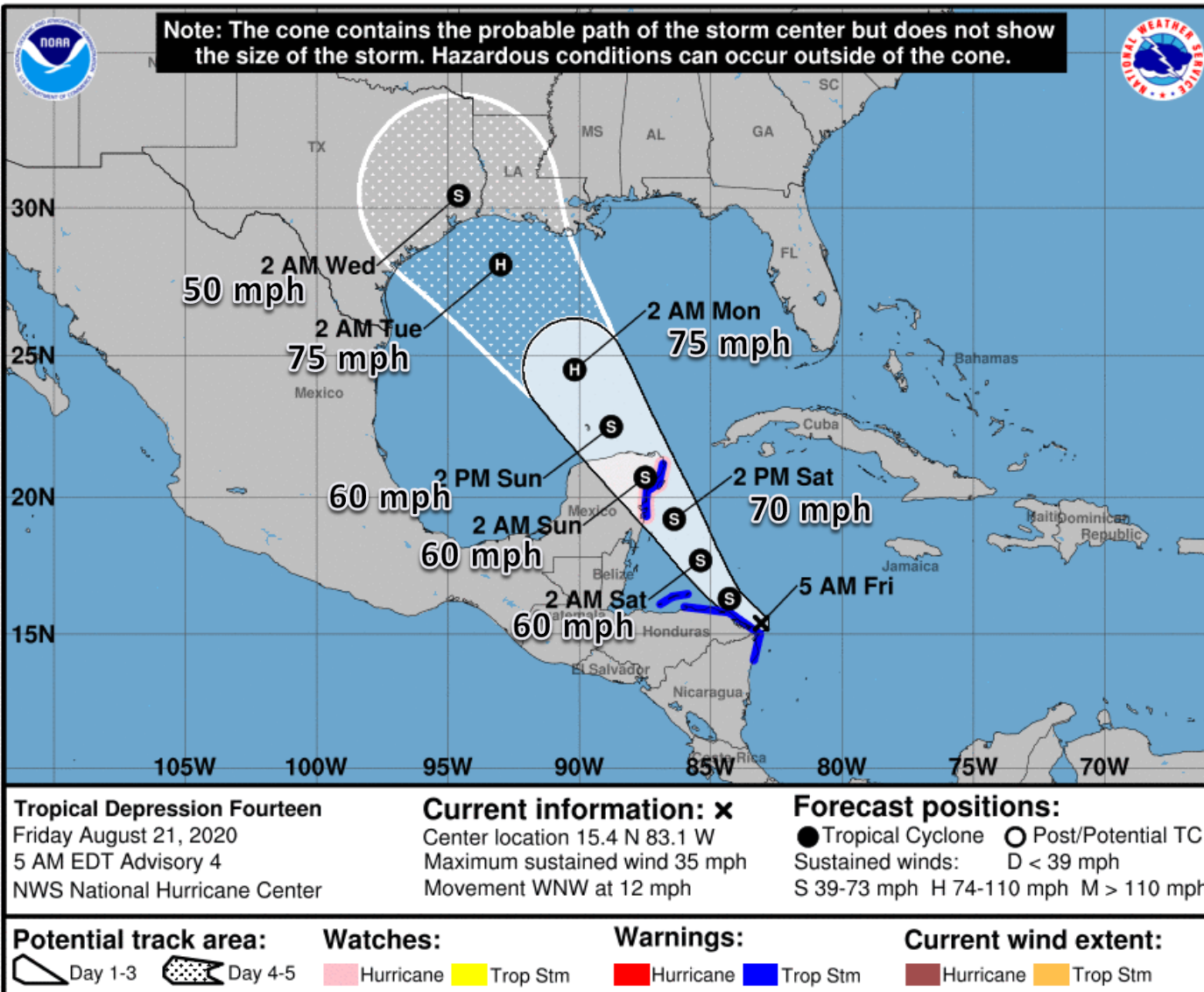
TROPICALTIDBITS.COM





Official Forecast Track

From the National Hurricane Center – Tropical Depression #14

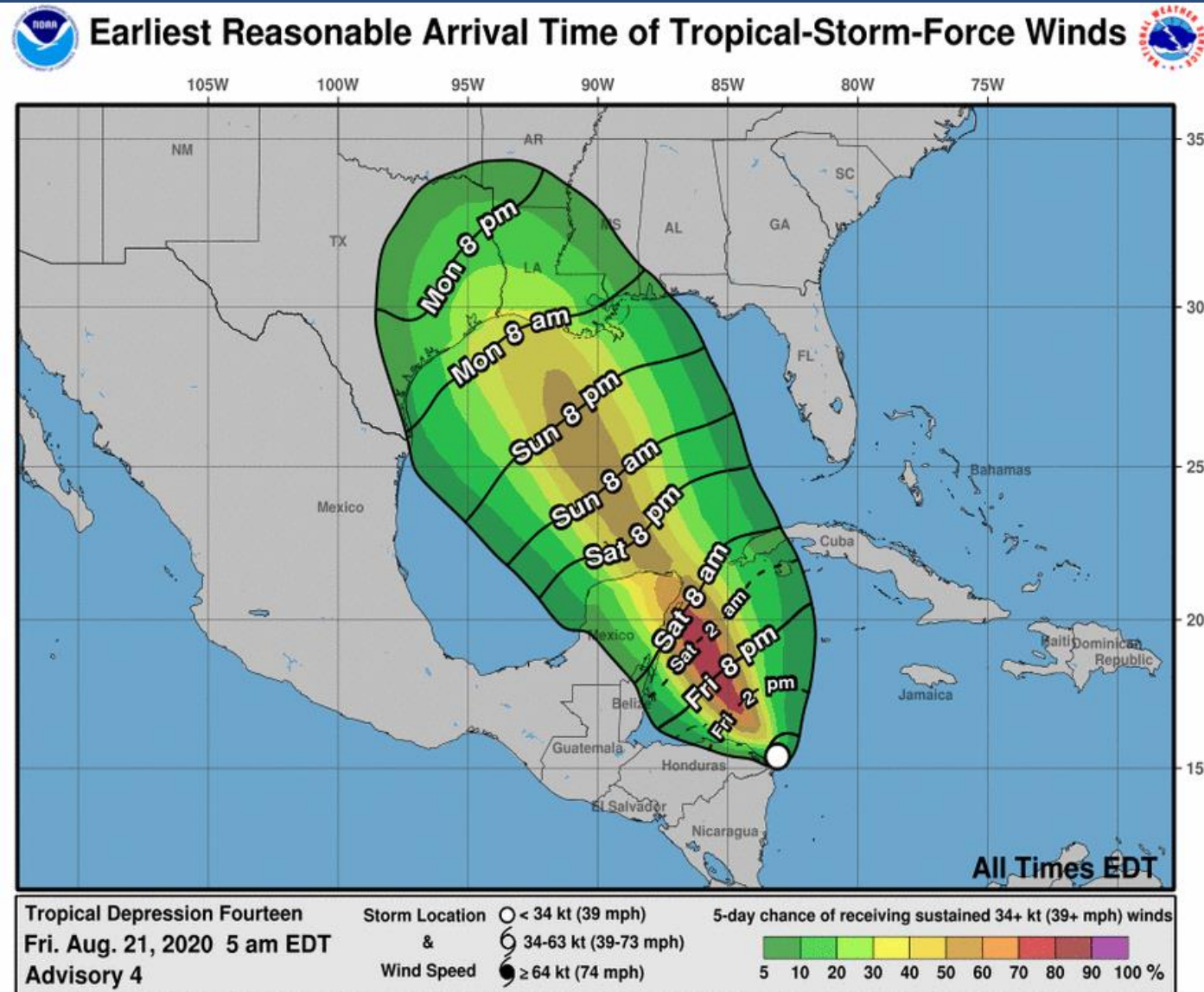


- The center of TD 14 is located about 30 miles north-northeast of Cabo Gracias a Dios on the Nicaragua/Honduras border
- Maximum sustained winds are at 35 mph, and strengthening is forecast until landfall in the Yucatan Peninsula.
- TD 14 has slowed down and is moving to the west-northwest at 12 mph. A northwestward movement is expected, and TD 14 should make landfall on the Yucatan Peninsula Saturday night..
- TD 14 will move into the Gulf of Mexico on Sunday. Landfall could occur along the Texas or Louisiana coast on Tuesday.
- The track and intensity forecast become uncertain again near the northern Gulf Coast as possible interactions with Tropical Depression #13 could alter the path and strength of TD 14.



Time of Arrival & Wind Speed Probabilities

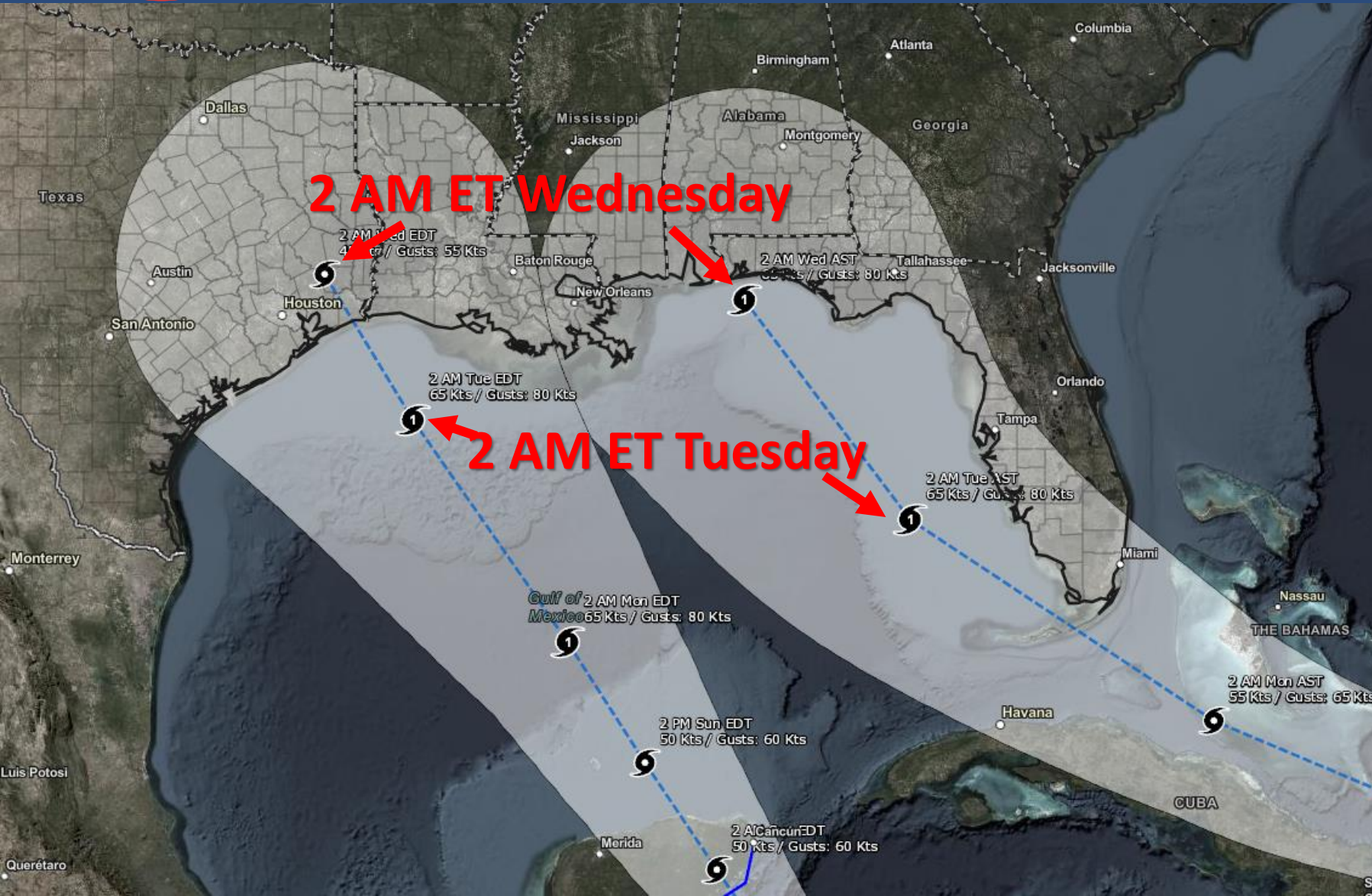
MOST LIKELY Time of Arrival of Tropical Storm Force Winds (>39 mph)



Tropical storm force winds could begin along the northwestern and central US Gulf Coast as early as Monday morning, but will more likely begin Monday evening.



TD 13 & TD 14 Forecasts Overview



If both systems stay far enough away from each other, then little impact on the storms is expected, and the Gulf should generally be favorable for further development.

However, if they get too close, then they could interact with each other, changing the forecast track, timing, and intensity. This introduces much more uncertainty in the forecast.



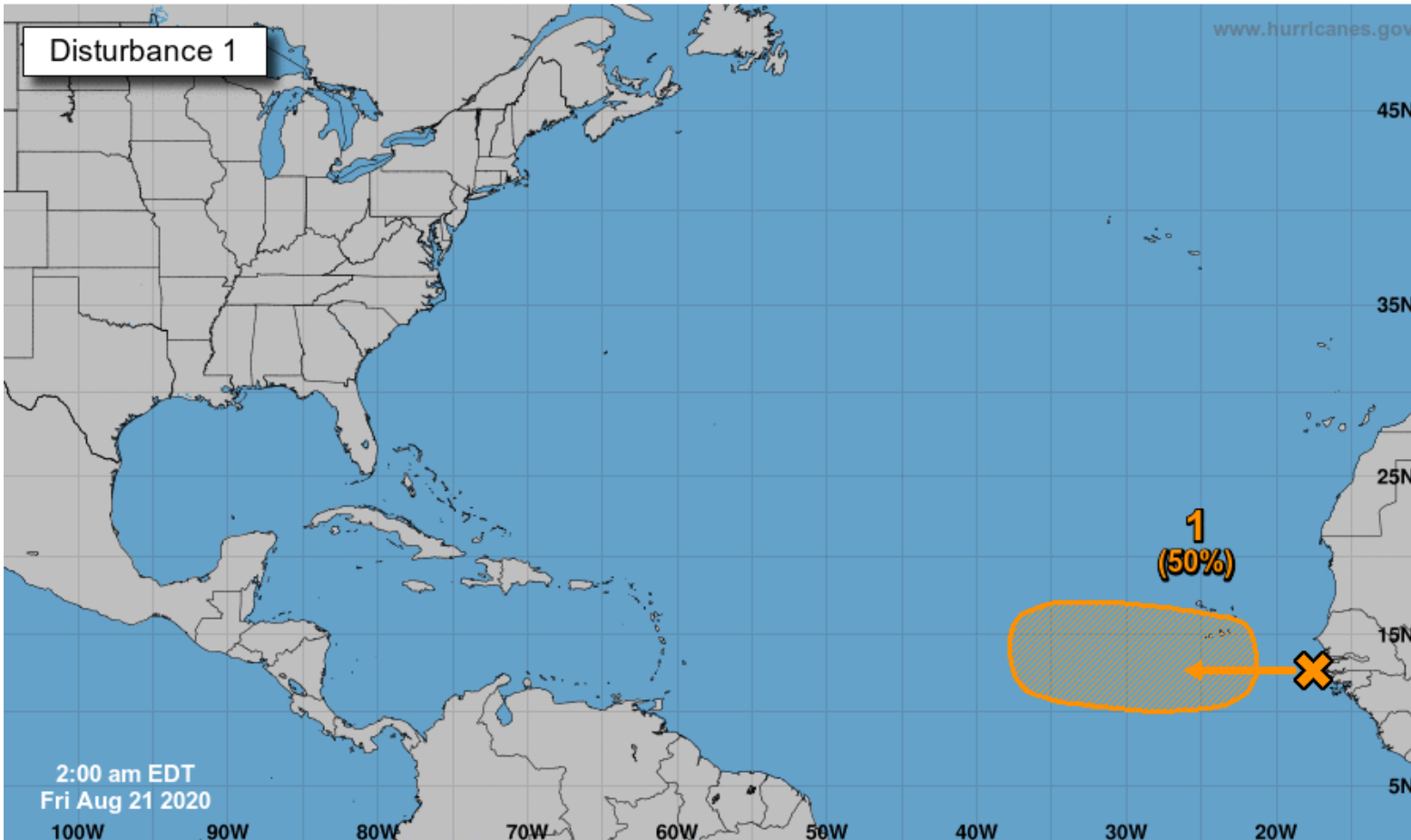
Tropical Weather Outlook

Possible Area of Development During the Next 5 Days ([LINK](#))



Five-Day Graphical Tropical Weather Outlook

National Hurricane Center Miami, Florida



A tropical wave moving off the west coast of Africa is producing a large area of disorganized showers and thunderstorms.

This wave is expected to move farther offshore over the far eastern tropical Atlantic today, and it could become a tropical depression within the next few days while it moves west-northwestward at 15-20 mph across the eastern tropical Atlantic.

Environmental conditions are expected to become less favorable for development early next week.

This system does not need to be monitored for impacts at this time.

***Formation chance through 48 hrs...low...20%**

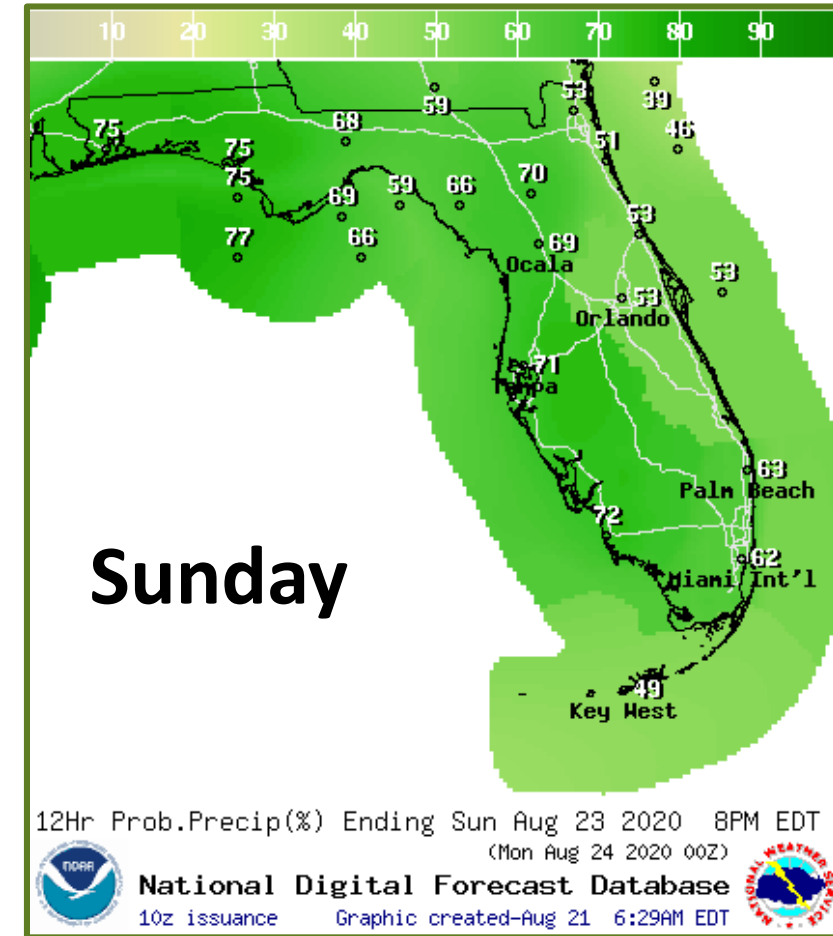
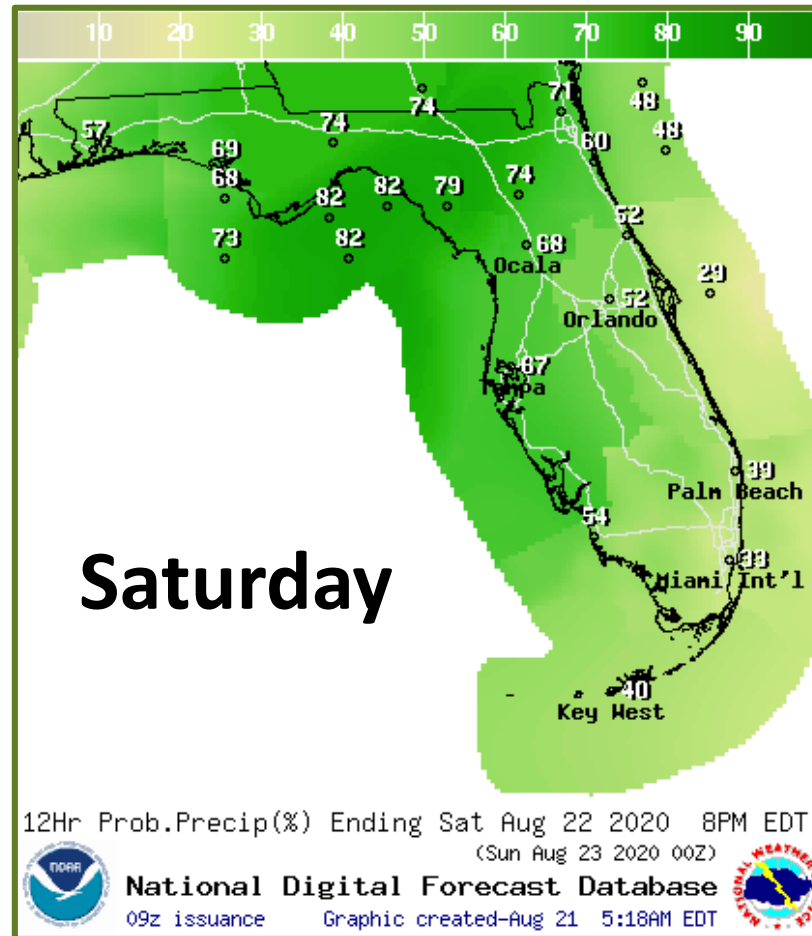
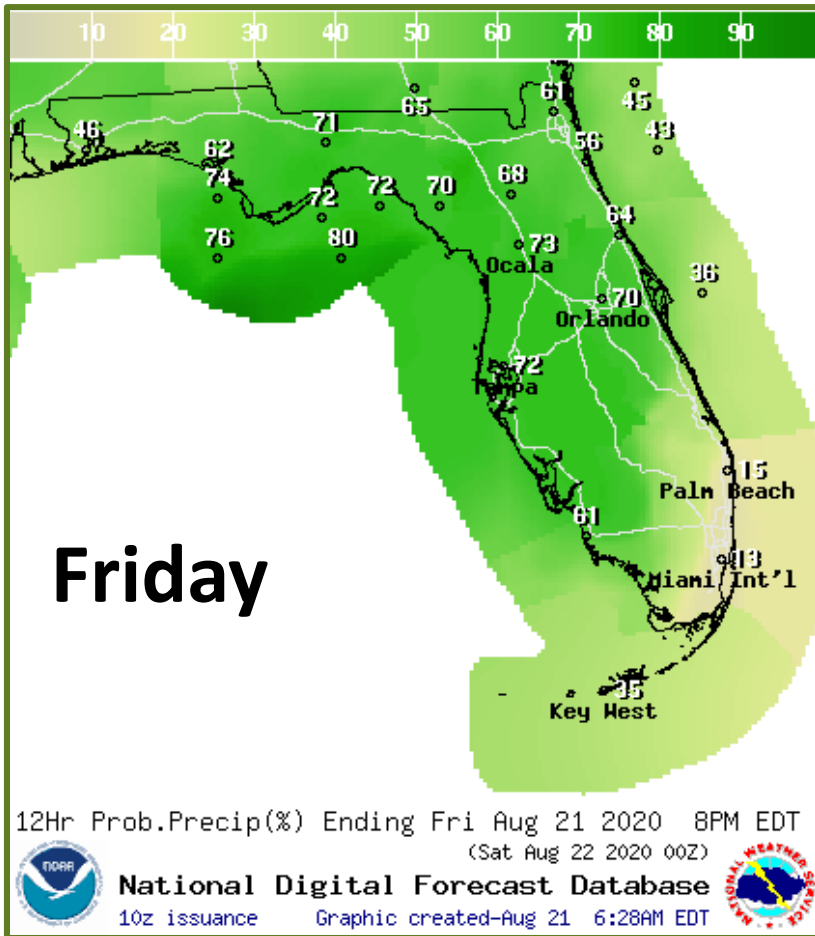
***Formation chance through 5 days...medium...50%**

Current Disturbances and Five-Day Cyclone Formation Chance:
 Tropical or Sub-Tropical Cyclone:
 X < 40% X 40-60% X > 60%
 ○ Depression ⚡ Storm ⚡ Hurricane
 ⊗ Post-Tropical Cyclone or Remnants



Rain Chances Next 3 Days

****Unrelated to the Tropics****



High rain chances statewide! Multiple rounds of storms throughout the day and continuing into the overnight, especially along the Gulf Coast. Outer rain bands from TD 13 could approach South Florida late Sunday.



Severe Weather & Flood Threat

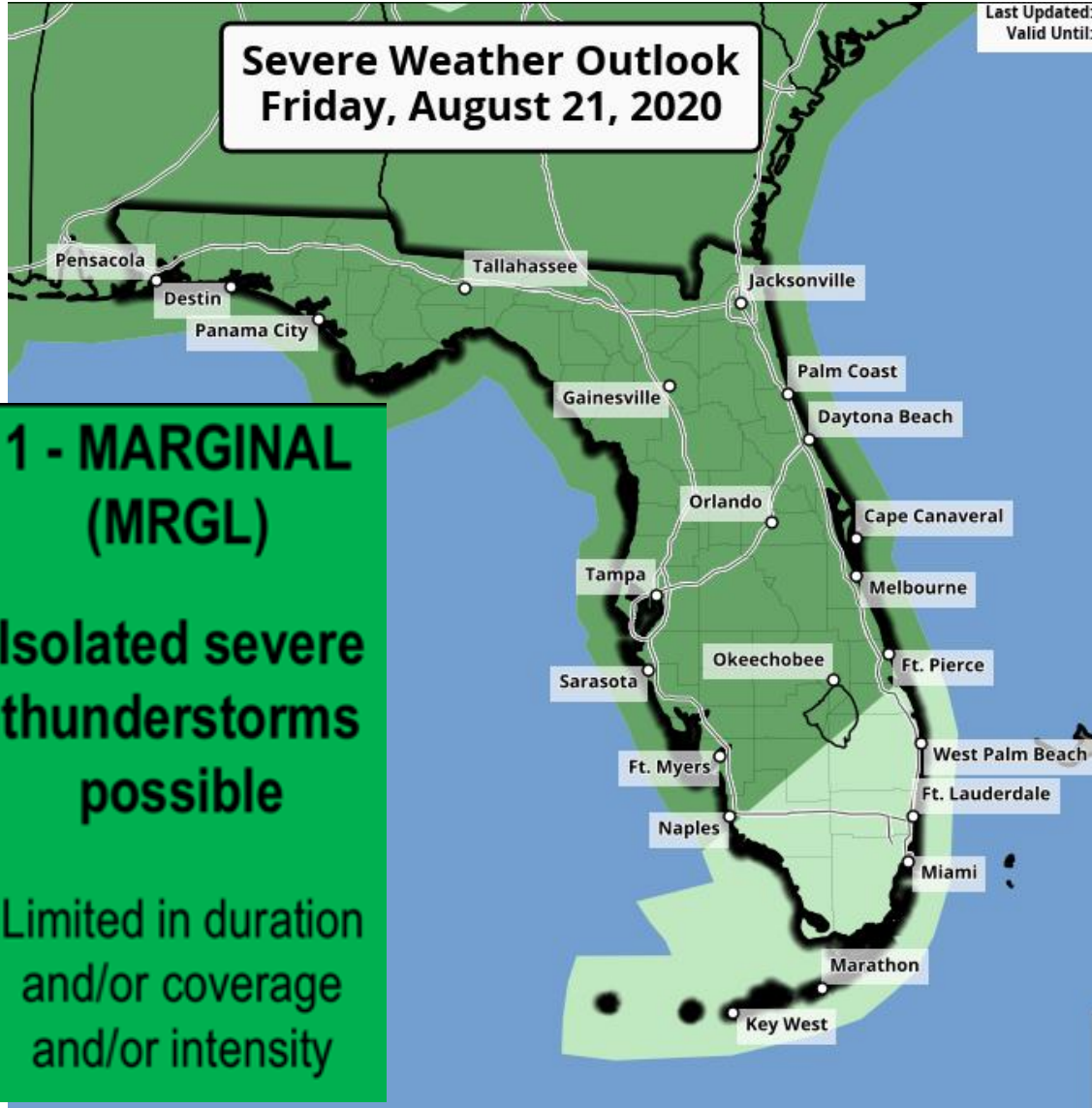
Severe Weather Outlook Friday, August 21, 2020

Last Updated:
Valid Until:

**1 - MARGINAL
(MRGL)**

**Isolated severe
thunderstorms
possible**

**Limited in duration
and/or coverage
and/or intensity**

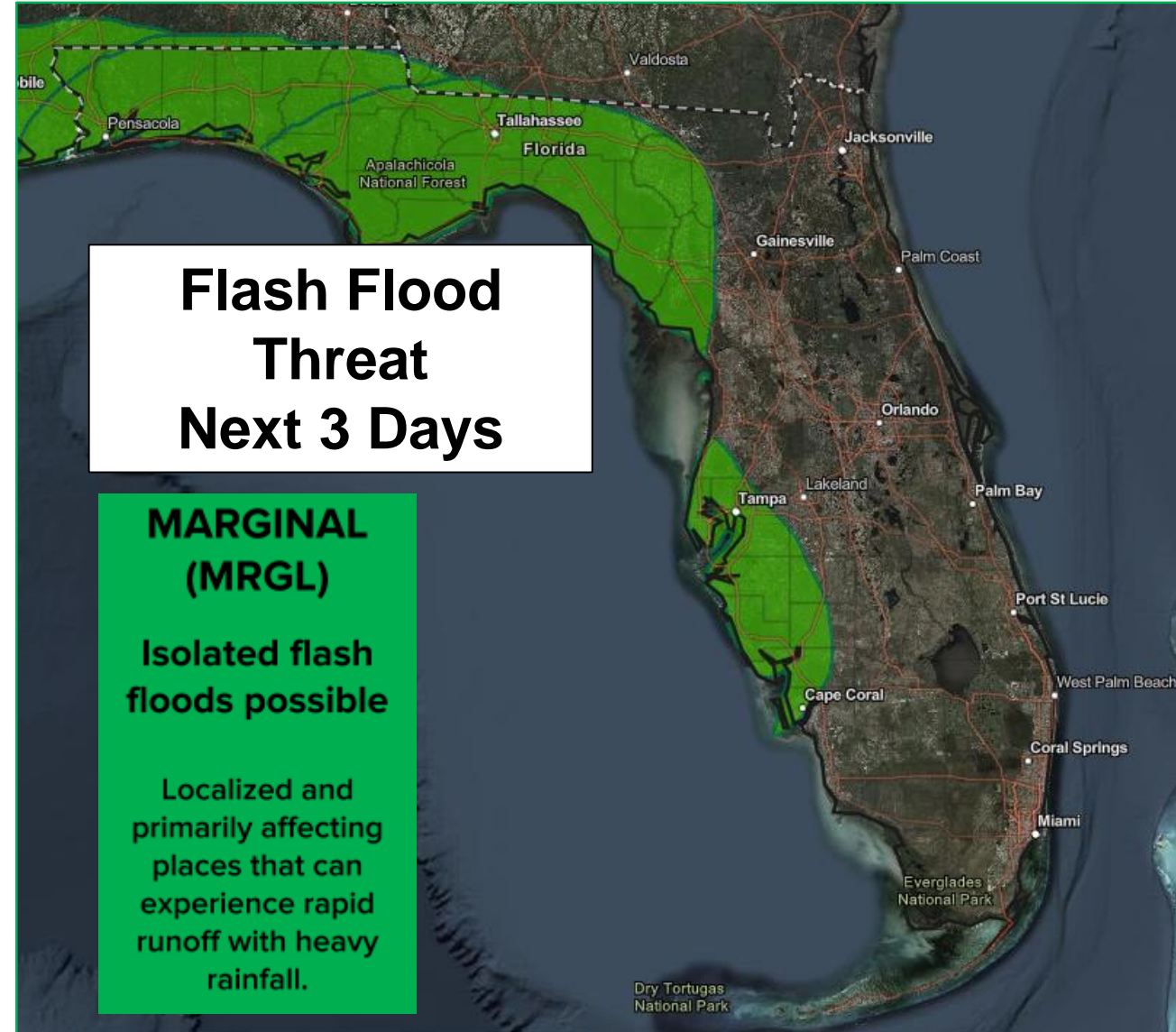


Flash Flood Threat Next 3 Days

**MARGINAL
(MRGL)**

**Isolated flash
floods possible**

**Localized and
primarily affecting
places that can
experience rapid
runoff with heavy
rainfall.**



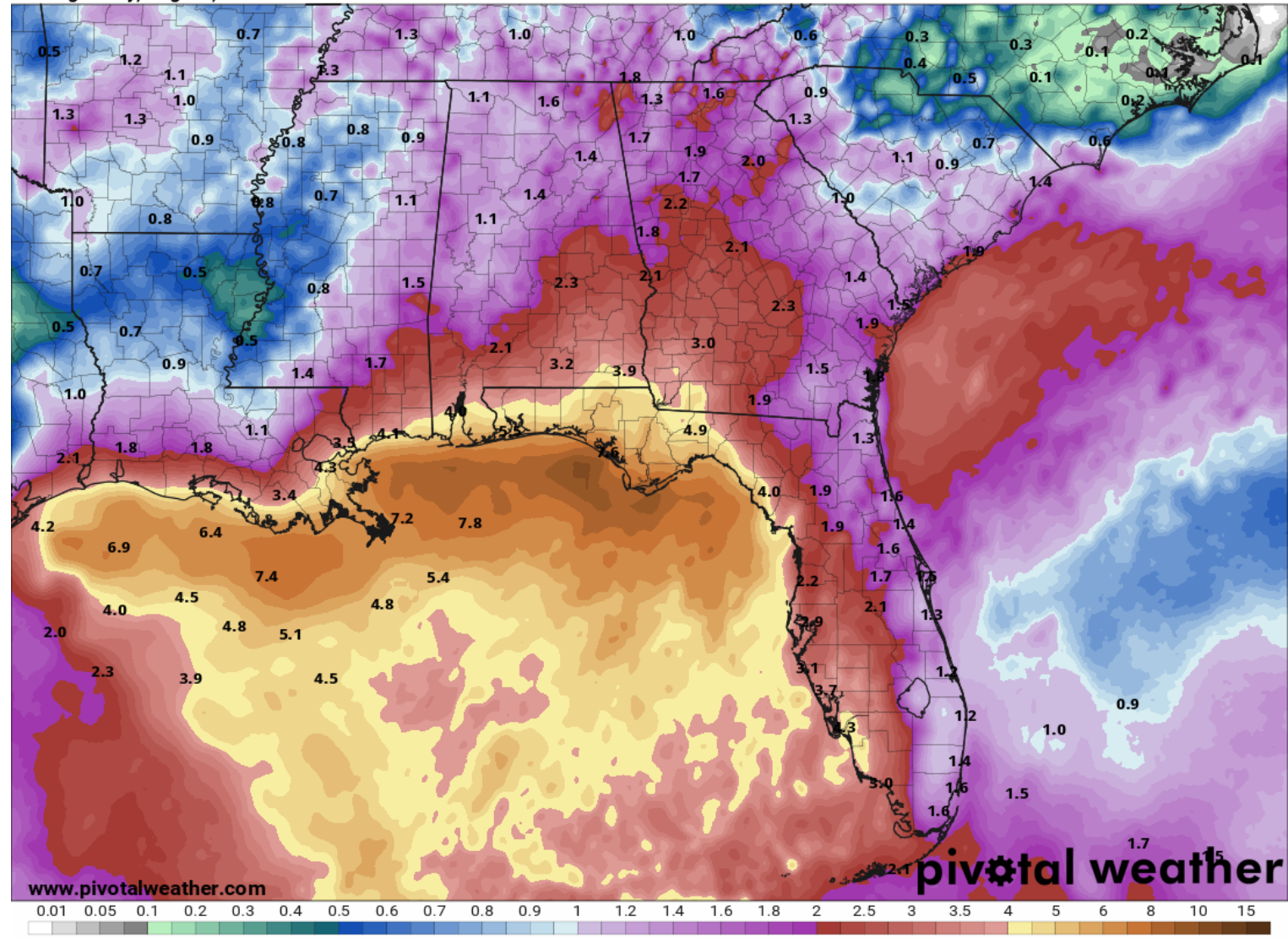


Forecast Rainfall Totals Next 7 Days

- A widespread 3-7" expected across the state this week, with the highest totals in the Panhandle and Big Bend.
- Locally 7-10" especially along the Gulf Coast
- Storms will be very efficient rainfall producers, and could produce 2-4" of rain within an hour.
- There is an isolated flash flood threat each day across much of the state.
- The flash flood threat will increase next week in the Panhandle

7-Day Precipitation (in)
Ending Friday, Aug. 28, 2020 at 8 a.m. EDT

Init: Fri 2020-08-21 12z WPC





Overall Summary

Tropical Depression #13 – Near the Lesser Antilles

- Tropical Depression #13 is located about 305 miles east of the northern Leeward Islands, moving WNW at 21 mph..
- Maximum sustained winds are near 35 mph, and TD 13 is likely to become a tropical storm today or Saturday. TD 13 is forecast to become a hurricane by Monday night or Tuesday.
- The center of TD 13 will likely pass near or over South Florida and the Keys, then near the Panhandle or Big Bend on Tuesday or Wednesday.
- The forecast intensity is uncertain before it reaches Florida due to possible land interaction with Hispaniola and Cuba.
- The forecast track and intensity are more uncertain in the Gulf of Mexico due to possible interaction with Tropical Depression #14.

Tropical Depression #14 – Western Caribbean

- The center of TD 14 is located about 30 miles north-northeast of Cabo Gracias a Dios on the Nicaragua/Honduras border, moving west-northwest at 12 mph.
- Maximum sustained winds are near 35 mph, and this system is expected to become a tropical storm later today and possibly near hurricane strength on Saturday
- TD 14 will likely make landfall on the Yucatan Peninsula on Saturday, emerge into the Gulf of Mexico on Sunday, then make landfall in Texas or Louisiana on Tuesday.
- The forecast track and intensity are uncertain as it approaches the northwest Gulf of Mexico due to possible interaction with Tropical Depression #13.

Tropical Wave near the Coast of Africa

- A tropical wave moving off the coast of Africa may gradually develop later this week. The National Hurricane Center gives the system a 20% (low) chance of development over the next 48 hours and a 50% (medium) chance of development over the next 5 days.



Florida Summary

Florida Outlook:

- Tropical Depression #13 poses a direct threat to Florida.
- Tropical storm force winds are likely to begin by Monday morning along the East Coast and the Florida Keys, but may begin as early as Sunday night.
- Tropical storm force winds will likely begin on Tuesday in the Panhandle and Big Bend, but could begin as early as Monday night.
- Heavy rainfall is also expected. A widespread 3-7" of rainfall is expected over the next 7 days statewide, especially in the Panhandle and Big Bend, with localized totals of 7-10" possible.
- Isolated tornadoes will be possible in some of the outer bands across South and possibly Central Florida and the Keys Sunday and Monday, then in North Florida late Monday into Tuesday.
- Dangerous rip currents are expected along some Atlantic beaches late this weekend into early next week and along the Gulf Coast early next week (in conjunction with swells from TD #14).
- The forecast across North Florida remains uncertain with regards to exact impacts due to any possible interactions between TD 13 & TD 14 as this could have implications on intensity and track.
- No impacts are expected from the wave over Africa at this time.
- Unrelated to the tropical systems, a stalled cold front will bring high rain chances to the state over the next couple days. A localized flash flood and severe weather threat exists each afternoon.

The next briefing packet will be issued late this morning with the 11 AM advisory. For the latest information on the tropics, please visit the National Hurricane Center website at www.hurricanes.gov.



TROPICAL UPDATE



Created by:

Cameron Young, Assistant State Meteorologist

Cameron.Young@em.myflorida.com

State Meteorological Support Unit

Florida Division of Emergency Management

Users wishing to subscribe (approval pending) to this distribution list, register at:

https://public.govdelivery.com/accounts/FLDEM/subscriber/new?topic_id=SERT_Met_Tropics.

Other reports available for subscription are available at:

<https://public.govdelivery.com/accounts/FLDEM/subscriber/new?preferences=true>