



# TROPICAL UPDATE



11:00 AM EDT

Thursday, August 20, 2020

Tropical Depression #13 – Central Atlantic

Tropical Depression #14 – Central Caribbean

Tropical Wave Near Africa (40%)

This update is intended for government and emergency response officials, and is provided for informational and situational awareness purposes only. Forecast conditions are subject to change based on a variety of environmental factors. For additional information, or for any life safety concerns with an active weather event please contact your County Emergency Management or Public Safety Office, local National Weather Service forecast office, or visit the National Hurricane Center website at [www.hurricanes.gov](http://www.hurricanes.gov).



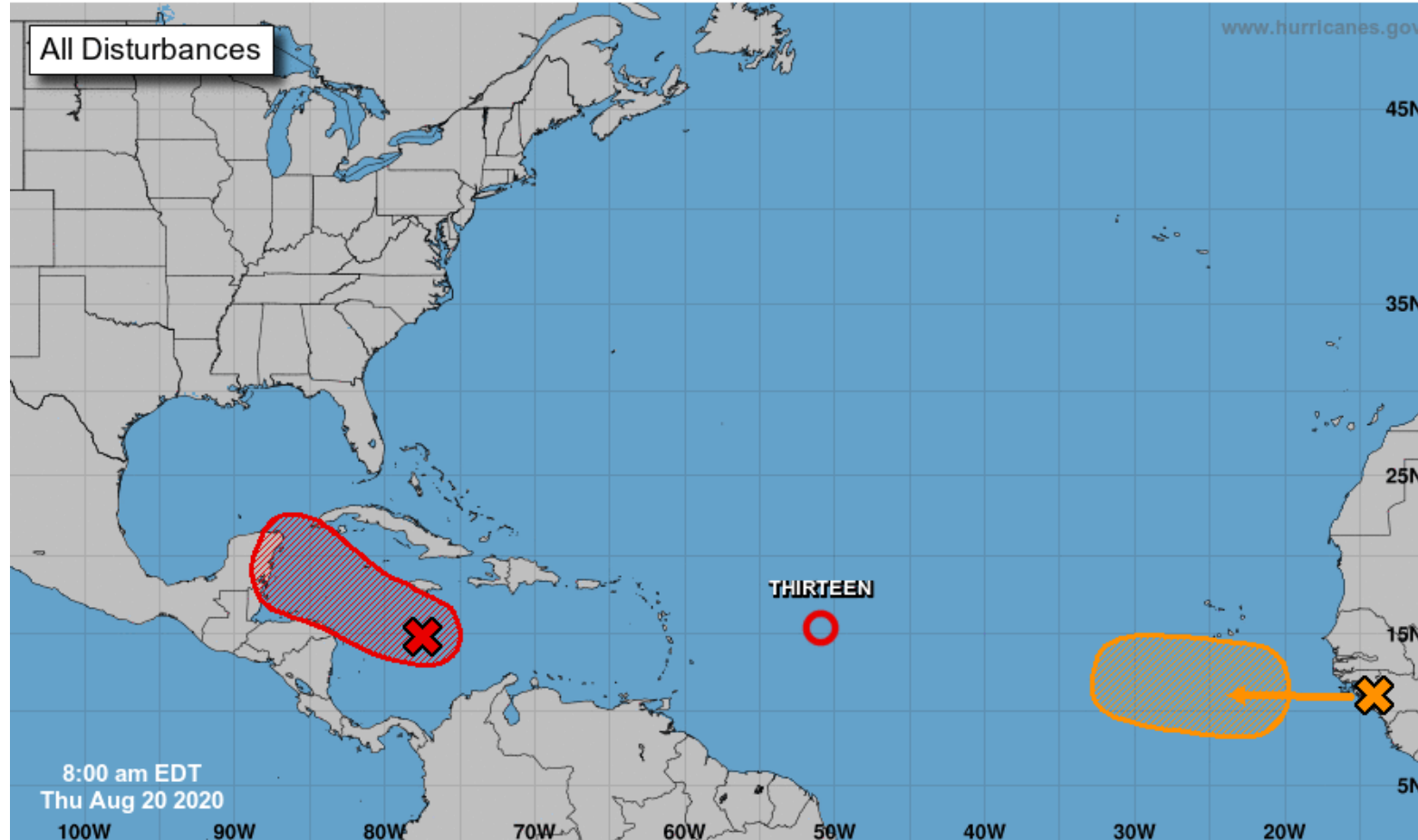
# Tropical Weather Outlook

Possible Areas of Development During the Next 5 Days ([LINK](#))



## Five-Day Graphical Tropical Weather Outlook

National Hurricane Center Miami, Florida



Current Disturbances and Five-Day Cyclone Formation Chance: < 40% 40-60% > 60%

Tropical or Sub-Tropical Cyclone: Depression Storm Hurricane

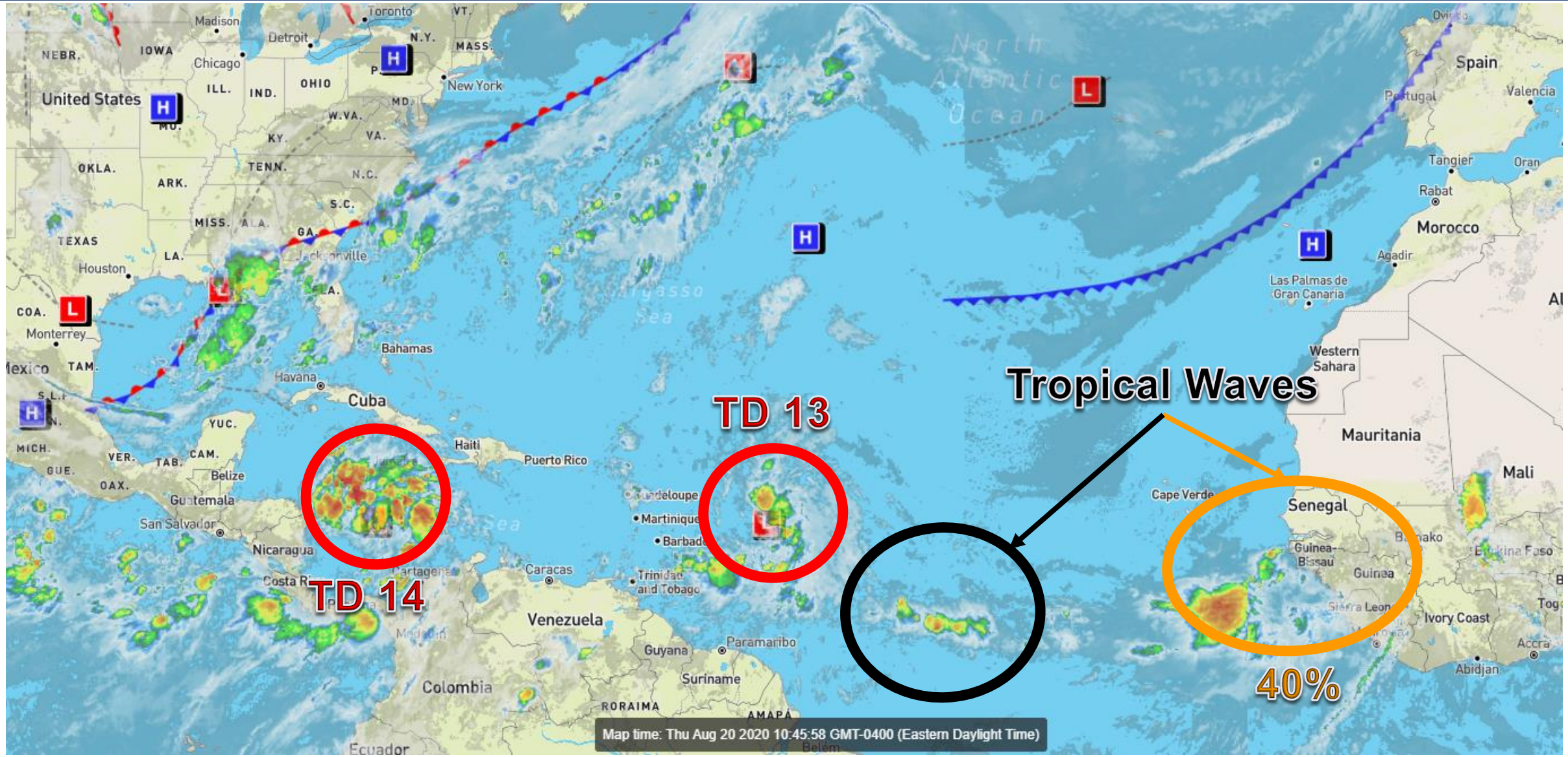
Post-Tropical Cyclone or Remnants





# Atlantic Basin Satellite Image

Chance of development: — None — Low — Medium — High







# Steering Currents

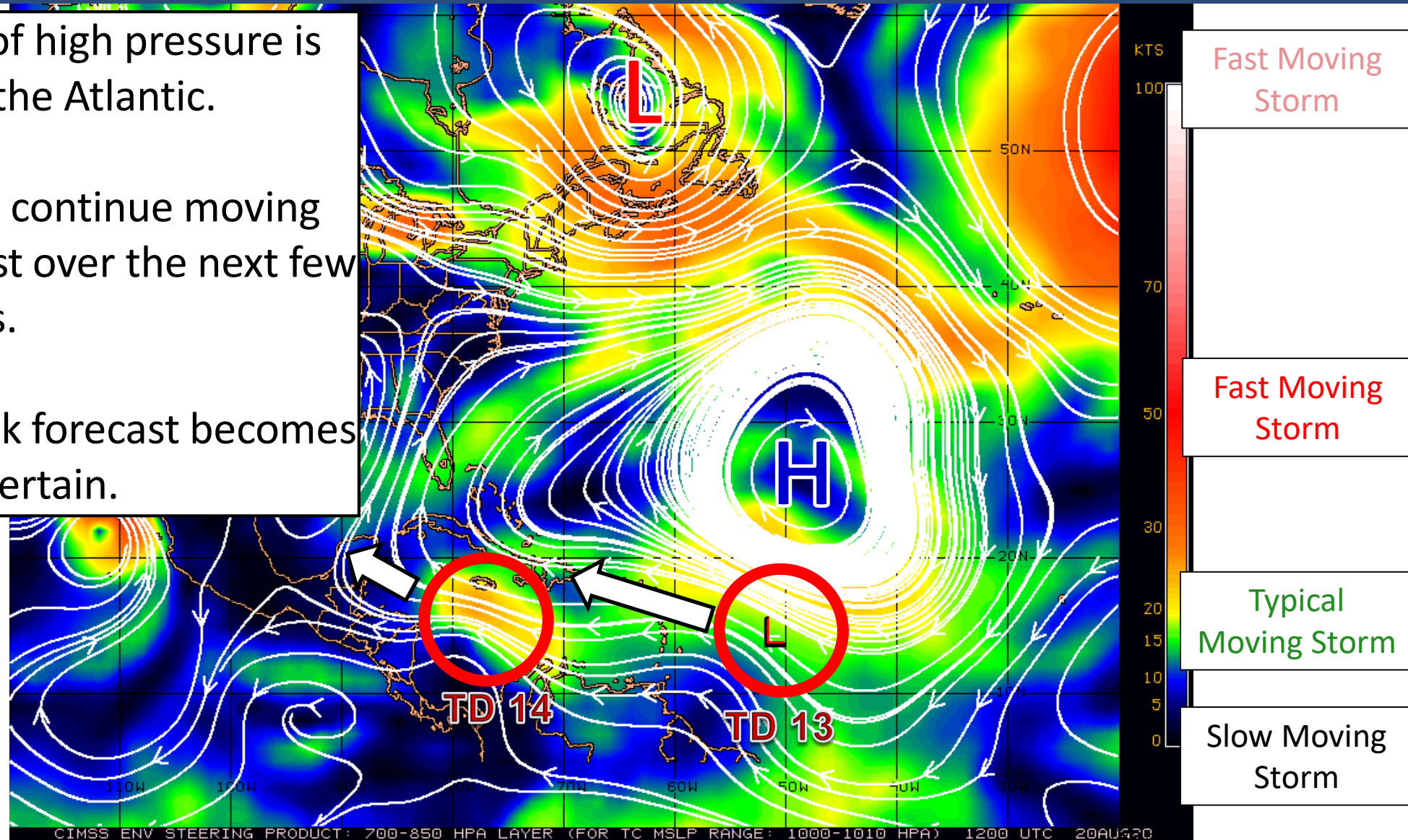
What is moving the systems?

Color denotes the movement speed through the atmosphere and thin white lines denote direction. Tightly clustered white lines represent faster movement as well.

A large, strong area of high pressure is centered over the Atlantic.

The two systems will continue moving west or west-northwest over the next few days.

This weekend, the track forecast becomes more uncertain.



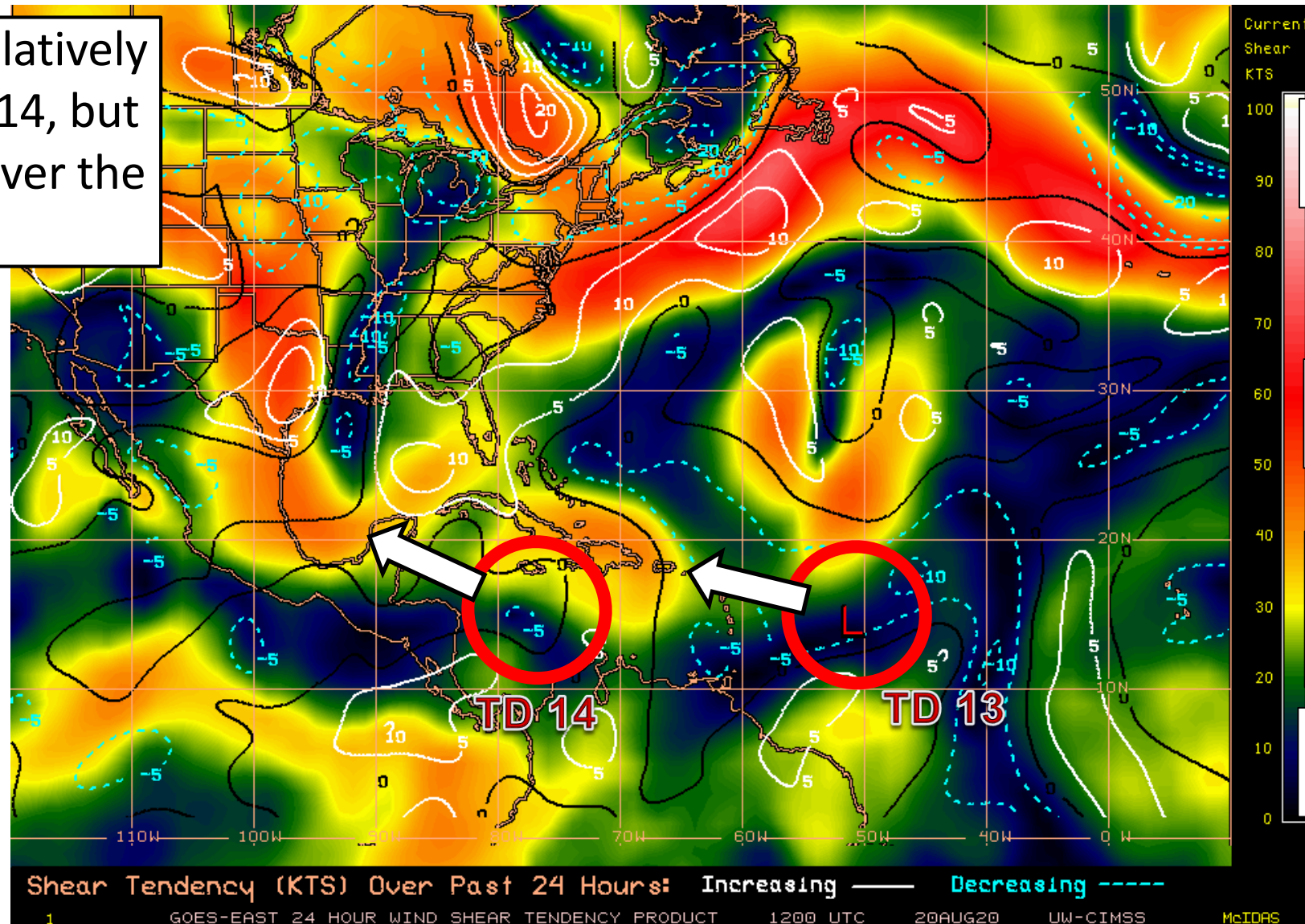


# Wind Shear

Is the environment favorable for the systems?

Color denotes the amount of wind shear and the lines denote how it have changed over the last 24 hours (dotted lines show decreasing shear and solid lines show increasing).

Wind shear remains relatively light near TD 13 & TD 14, but may increase slightly over the next day or so.



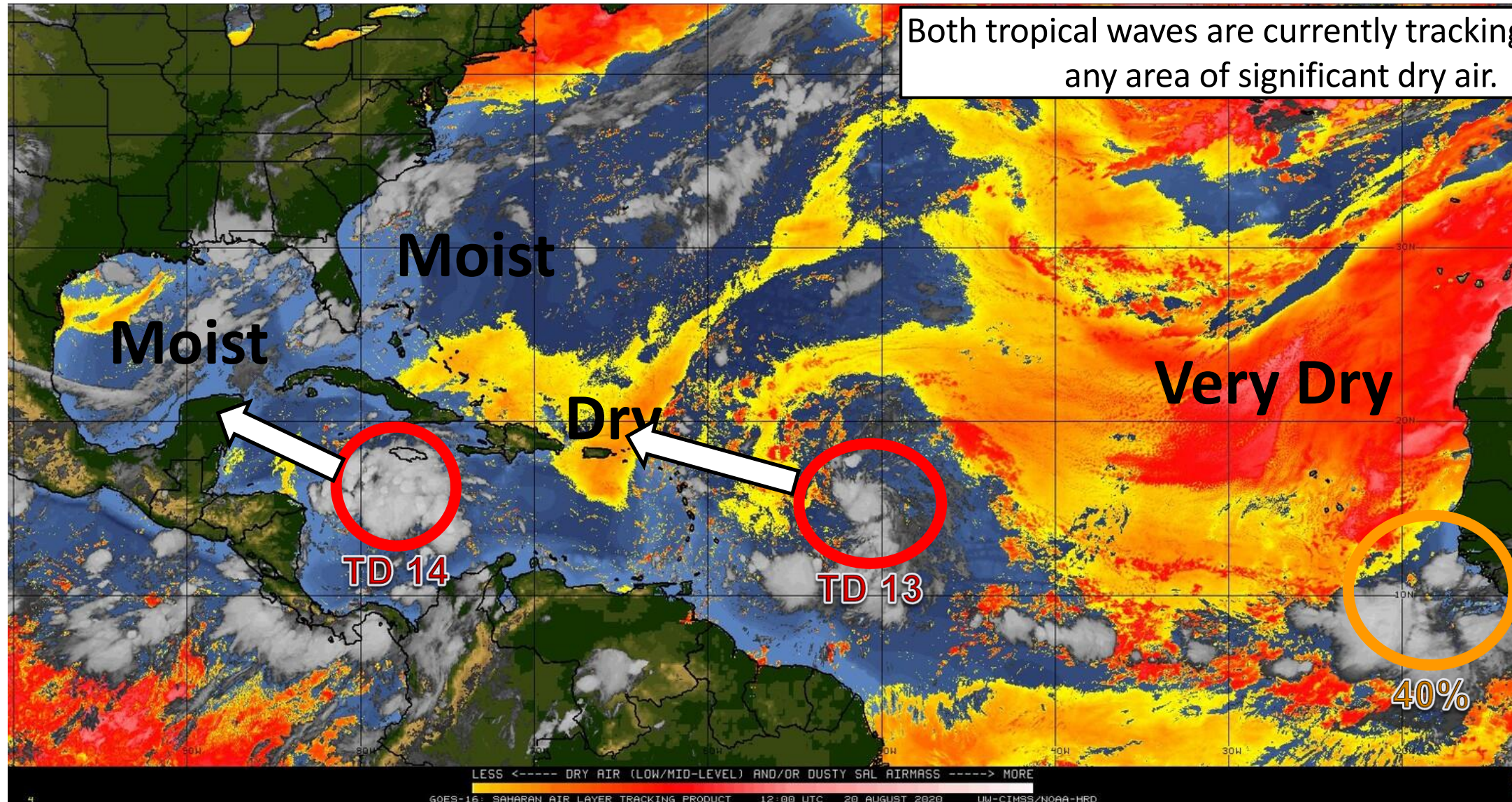




# Dry Air & Saharan Dust

Is the environment favorable for the systems?

Color denotes concentration of Saharan Dust or dry, stable air.







# Sea Surface Temperatures & Anomalies

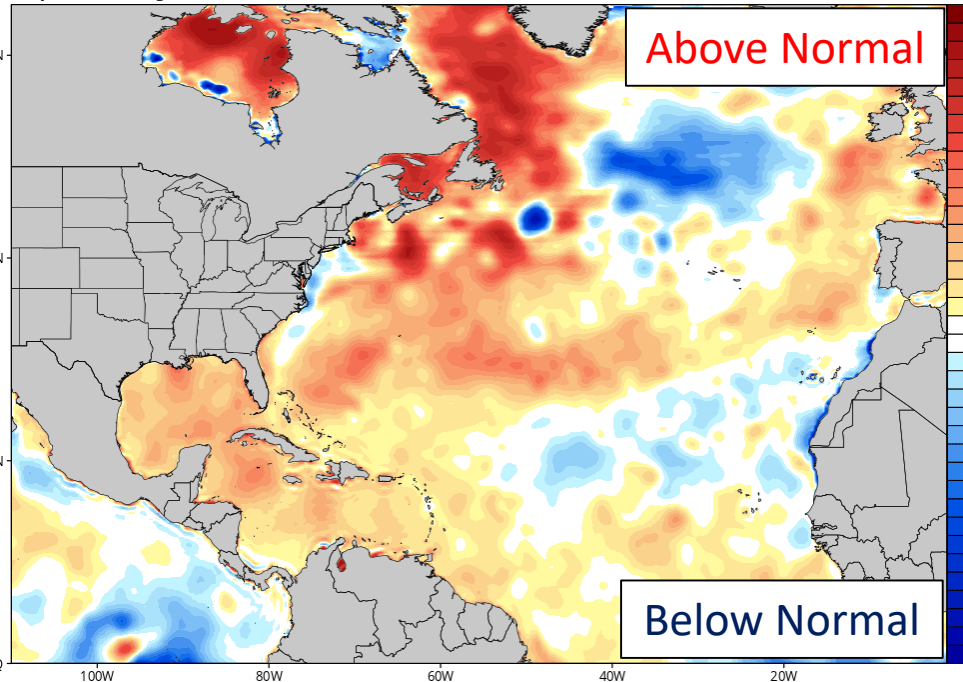
Is the ocean favorable for the systems?

Water temperatures will warm the further west the tropical waves move.

Water temperatures are above normal across much of the Atlantic, Caribbean, and Gulf of Mexico, supporting tropical development.

CDAS Sea Surface Temperature Anomaly (°C) (based on CFSR 1981-2010 Climatology)  
Analysis Time: 06z Aug 20 2020

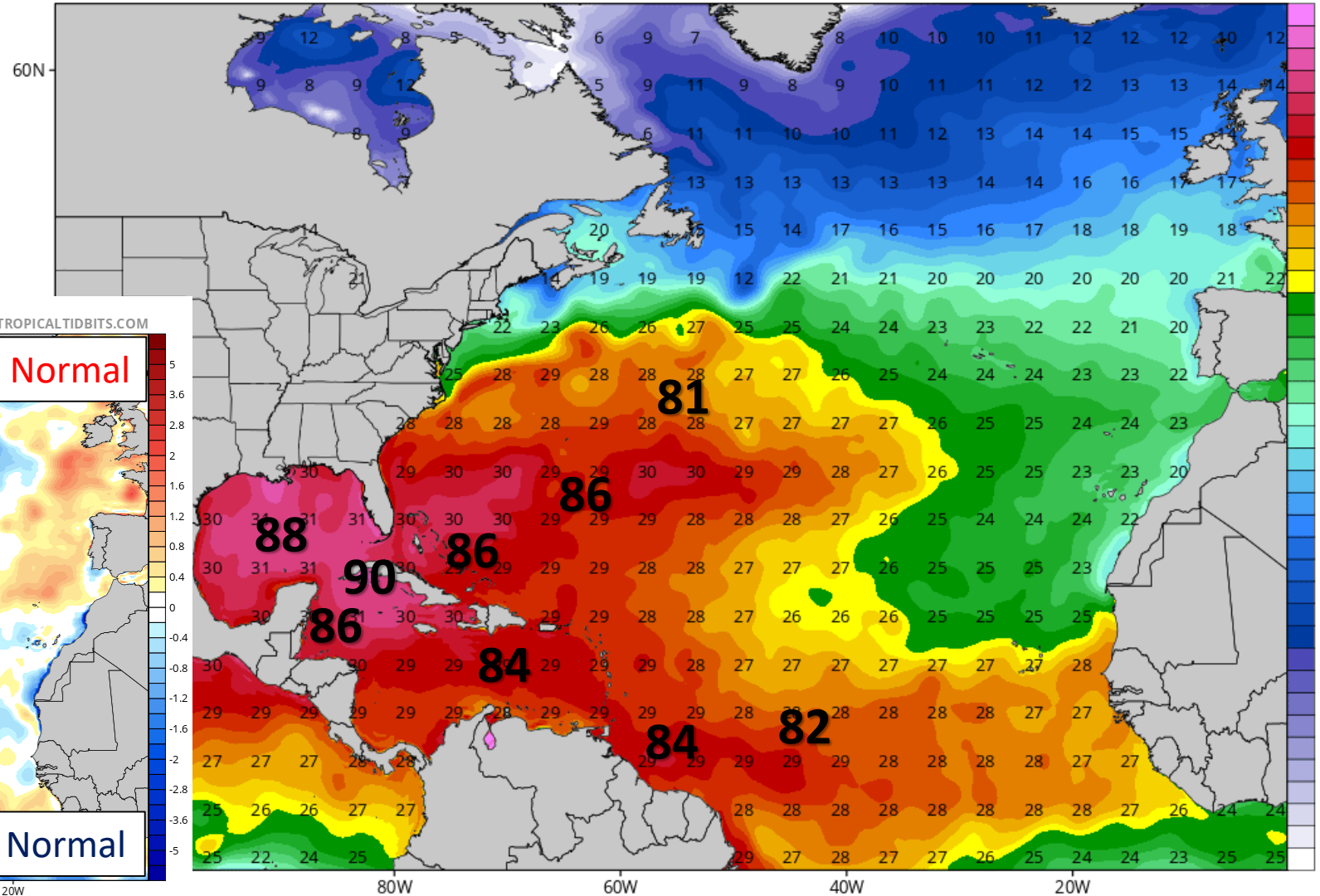
TROPICALTIDBITS.COM



CDAS Sea Surface Temperature (°C)

Analysis Time: 06z Aug 20 2020

TROPICALTIDBITS.COM

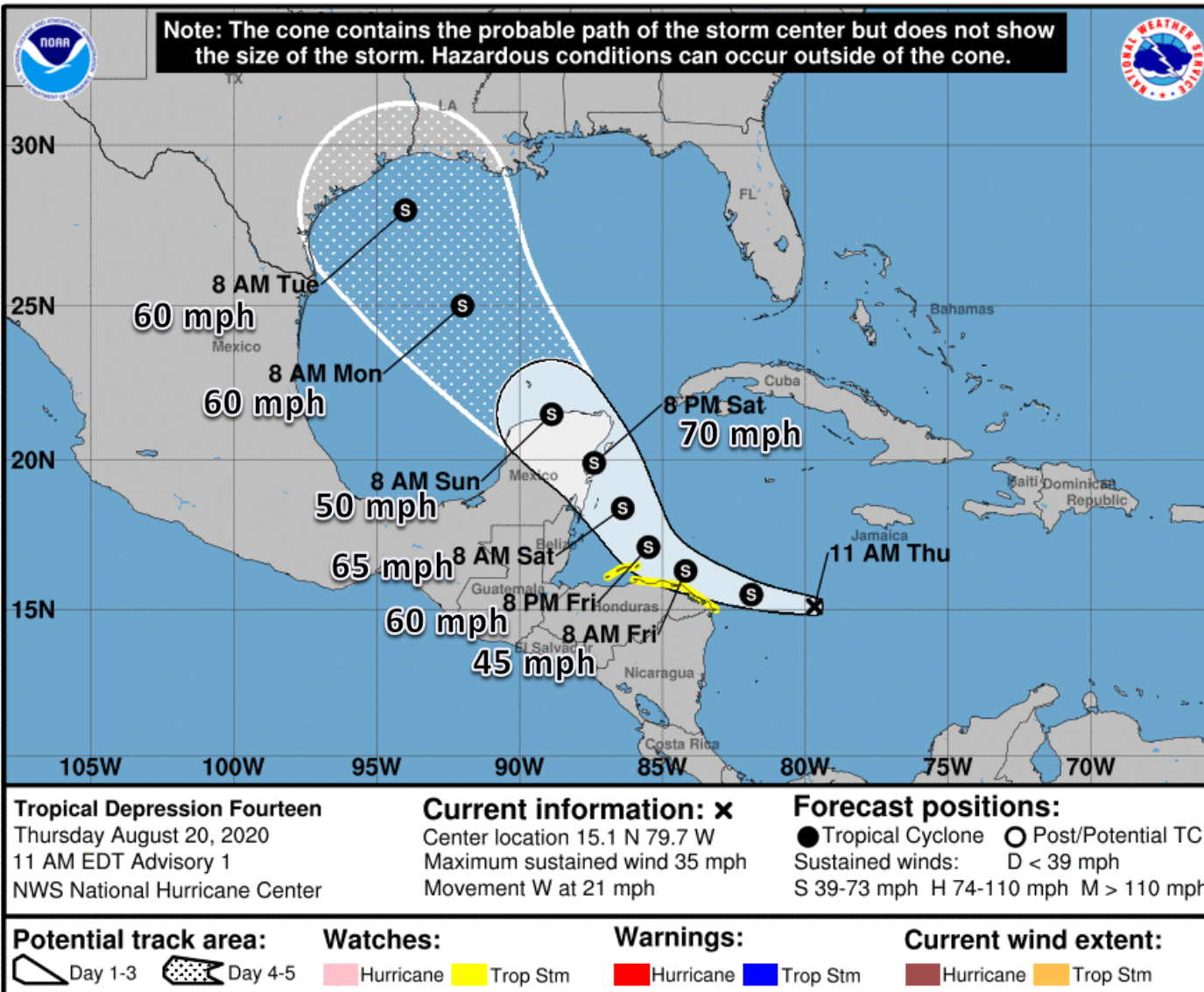


°F  
90  
88  
86  
84  
82  
81  
79  
75  
72



# Official Forecast Track

## From the National Hurricane Center – Tropical Depression #14



- The center of TD 14 is located about 235 miles east of Cabo Gracias a Dios near the Nicaragua/Honduras border.
- Maximum sustained winds are at 35 mph.
- TD 14 is moving west at 21 mph.
- TD 14 could be near hurricane strength as it moves near the Yucatan Peninsula.
- TD 14 will move into the Gulf of Mexico on Sunday. Landfall could occur along the Texas or Louisiana coast on Tuesday.



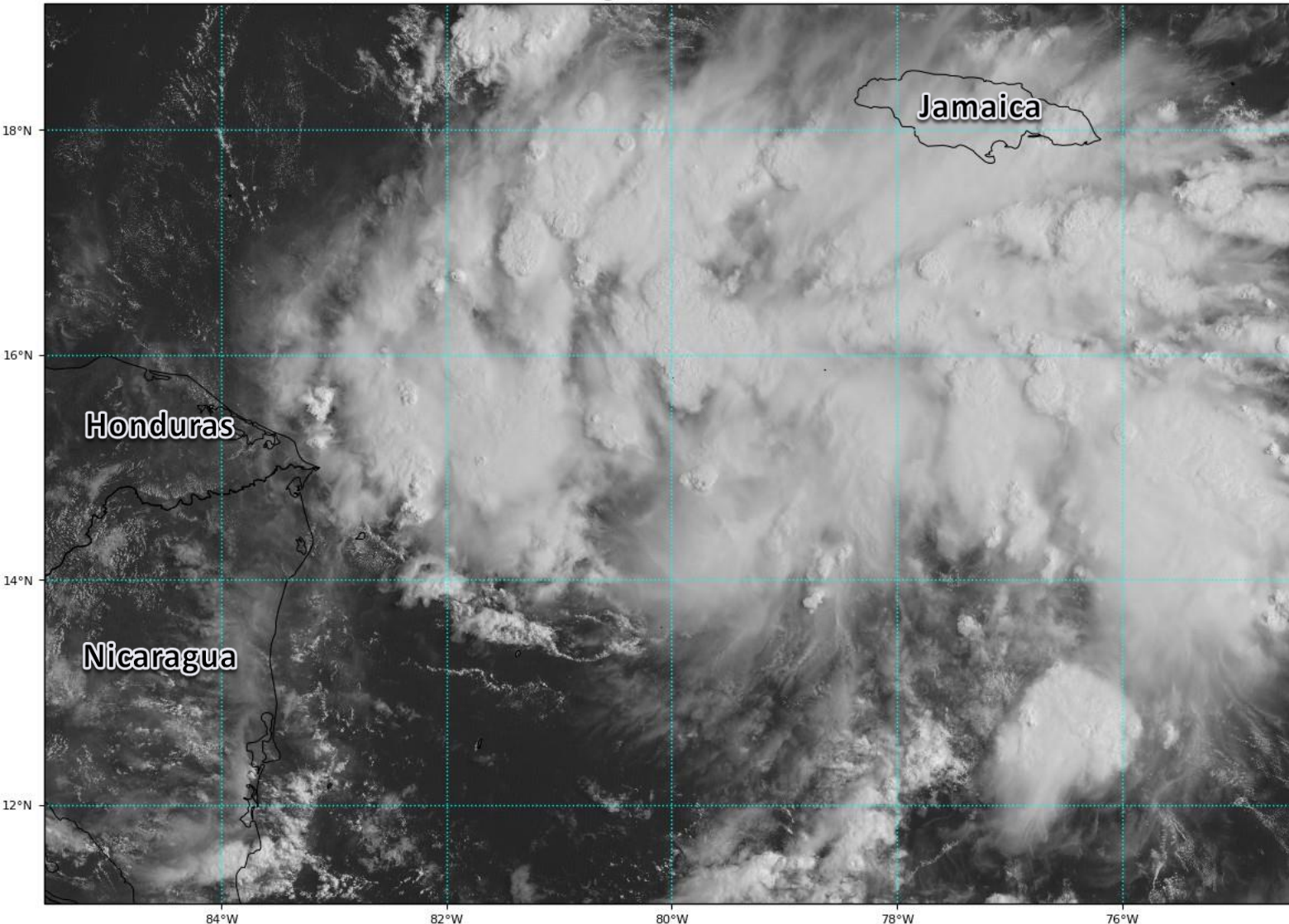


# Satellite Imagery

## Eastern Caribbean – Tropical Depression #14

GOES-16 Channel 2 (visible) Reflectance at 14:05Z Aug 20, 2020

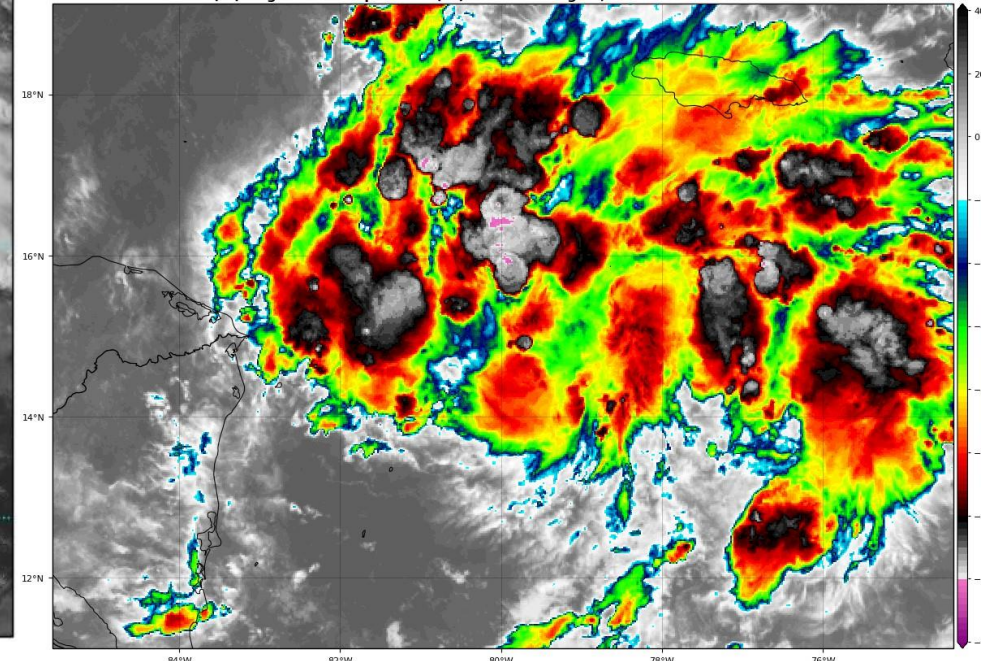
TROPICALTIDBITS.COM



Invest 97L has become sufficiently organized this morning to be classified as Tropical Depression #14. This system has a large area of showers and thunderstorms associated with it.

GOES-16 Channel 13 (IR) Brightness Temperature (°C) at 14:05Z Aug 20, 2020

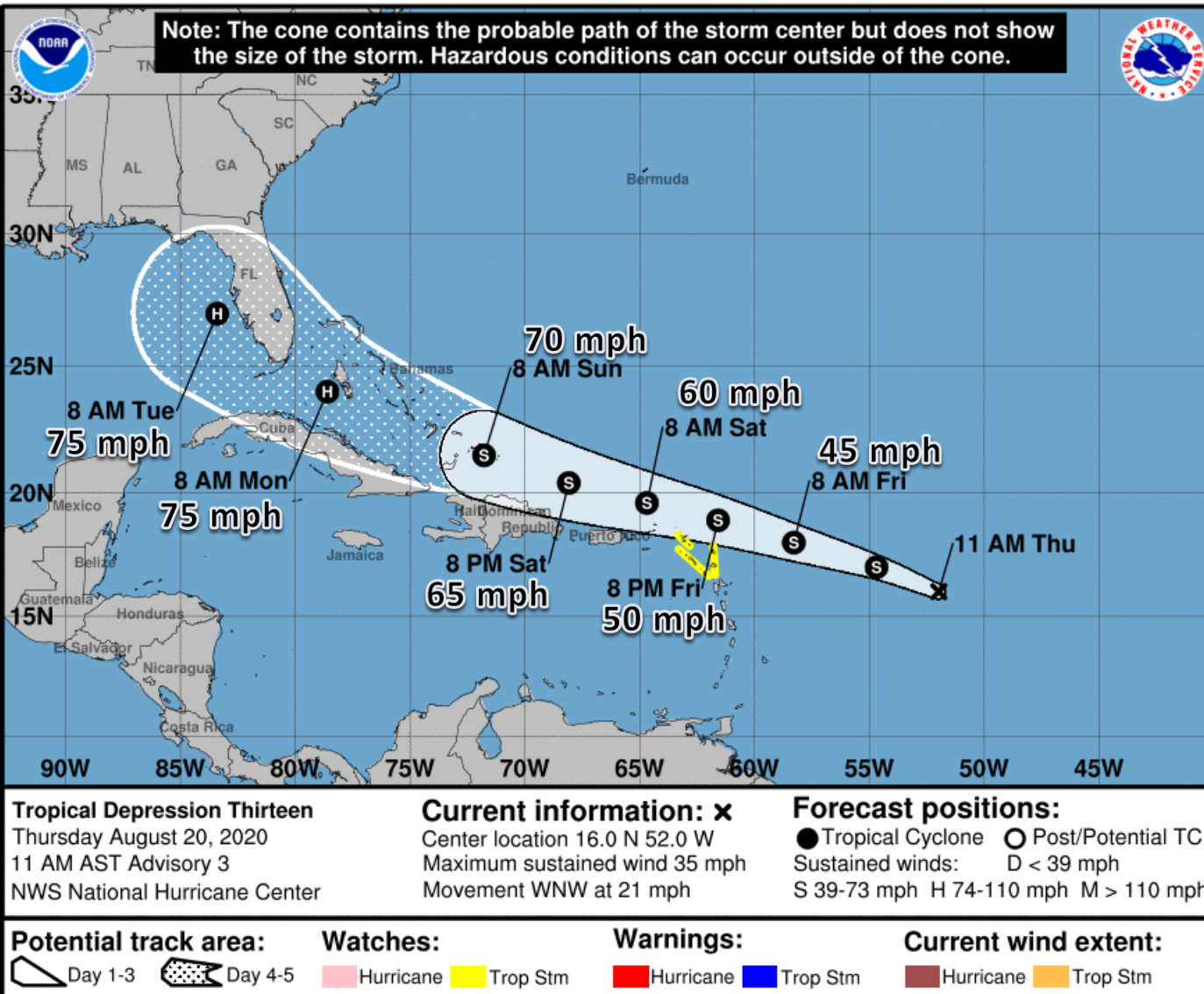
TROPICALTIDBITS.COM





# Official Forecast Track

## From the National Hurricane Center – Tropical Depression #13



- The center of TD 13 is located about 750 miles east of the northern Leeward Islands.
- Maximum sustained winds are at 35 mph. Some strengthening is forecast, and TD 13 should become a tropical storm later today. TD 13 could become a hurricane by Monday.
- TD 13 is moving toward the west-northwest at 21 mph, and this general motion is expected over the next few days.
- Cristobal will likely come close to South Florida on Monday.
- There remains uncertainty in the forecast intensity due to potential land interaction.



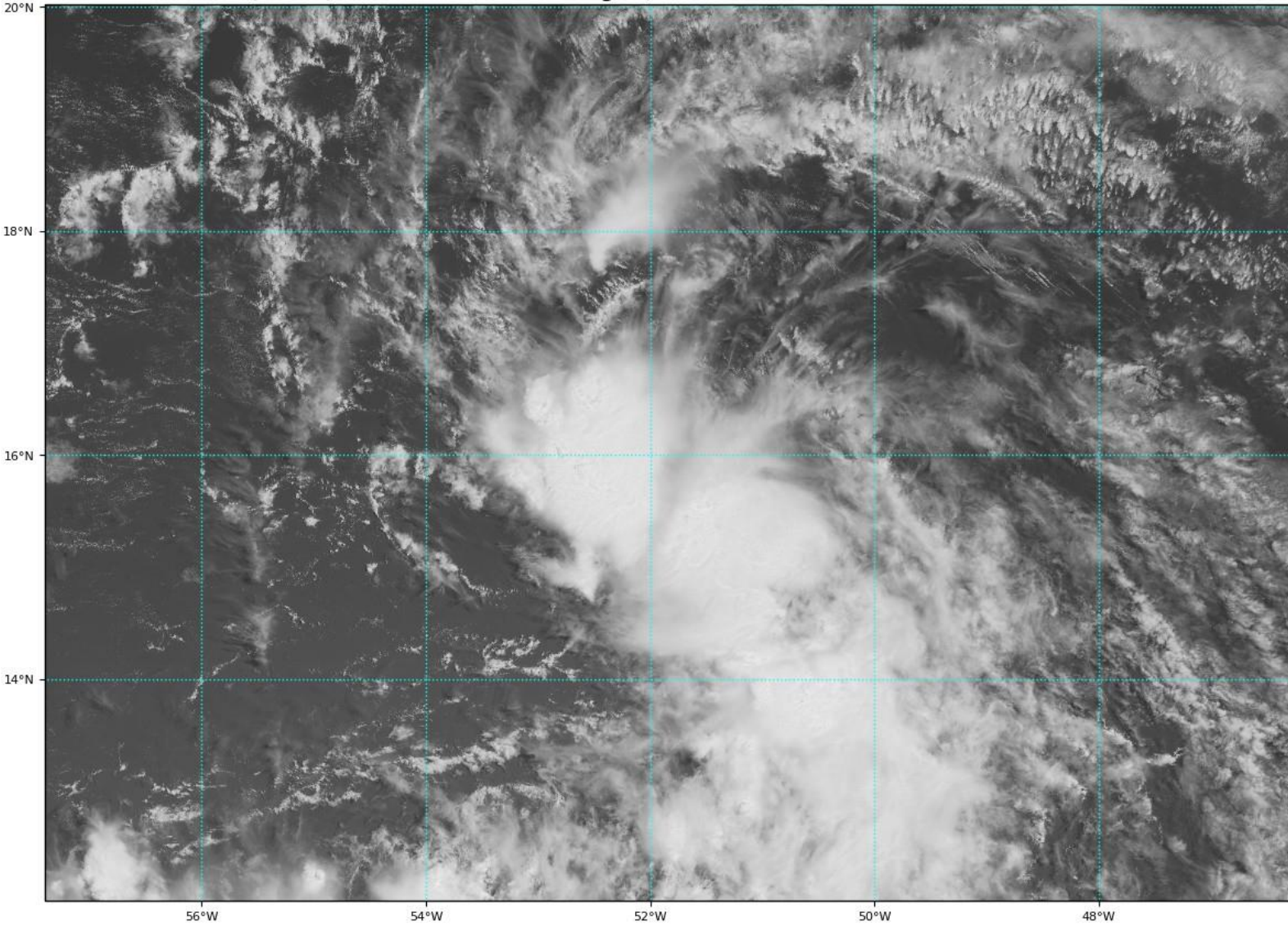


# Satellite Imagery

## Central Atlantic – Tropical Depression #13

GOES-16 Channel 2 (visible) Reflectance at 14:15Z Aug 20, 2020

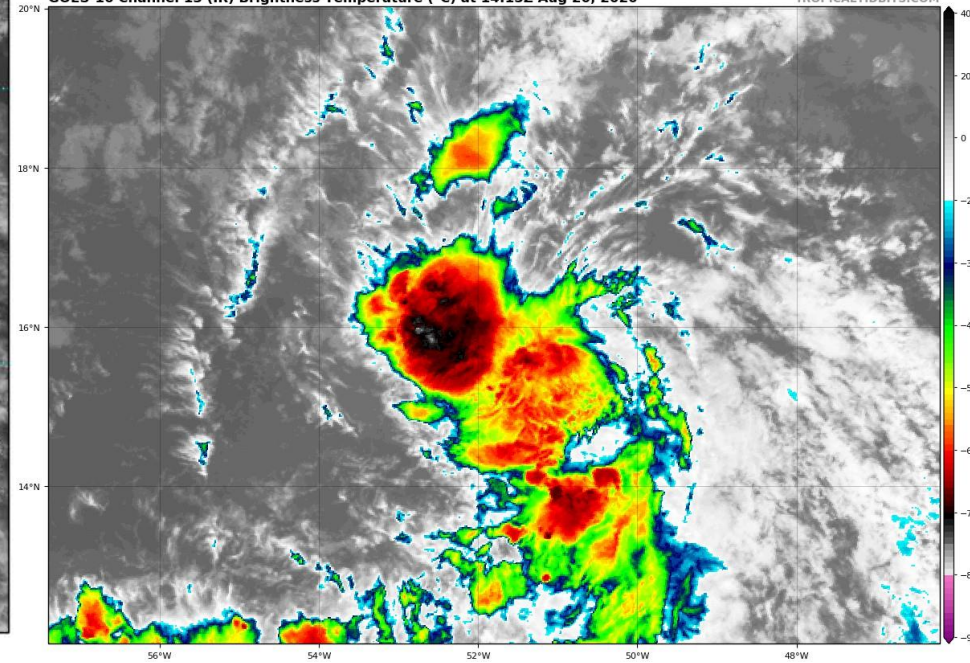
TROPICALTIDBITS.COM



Tropical Depression #13 was designated last night, and its organization has remained nearly steady over the last 12 hours. It is forecast to gradually become better organized as it moves west-northwestward.

GOES-16 Channel 13 (IR) Brightness Temperature (°C) at 14:15Z Aug 20, 2020

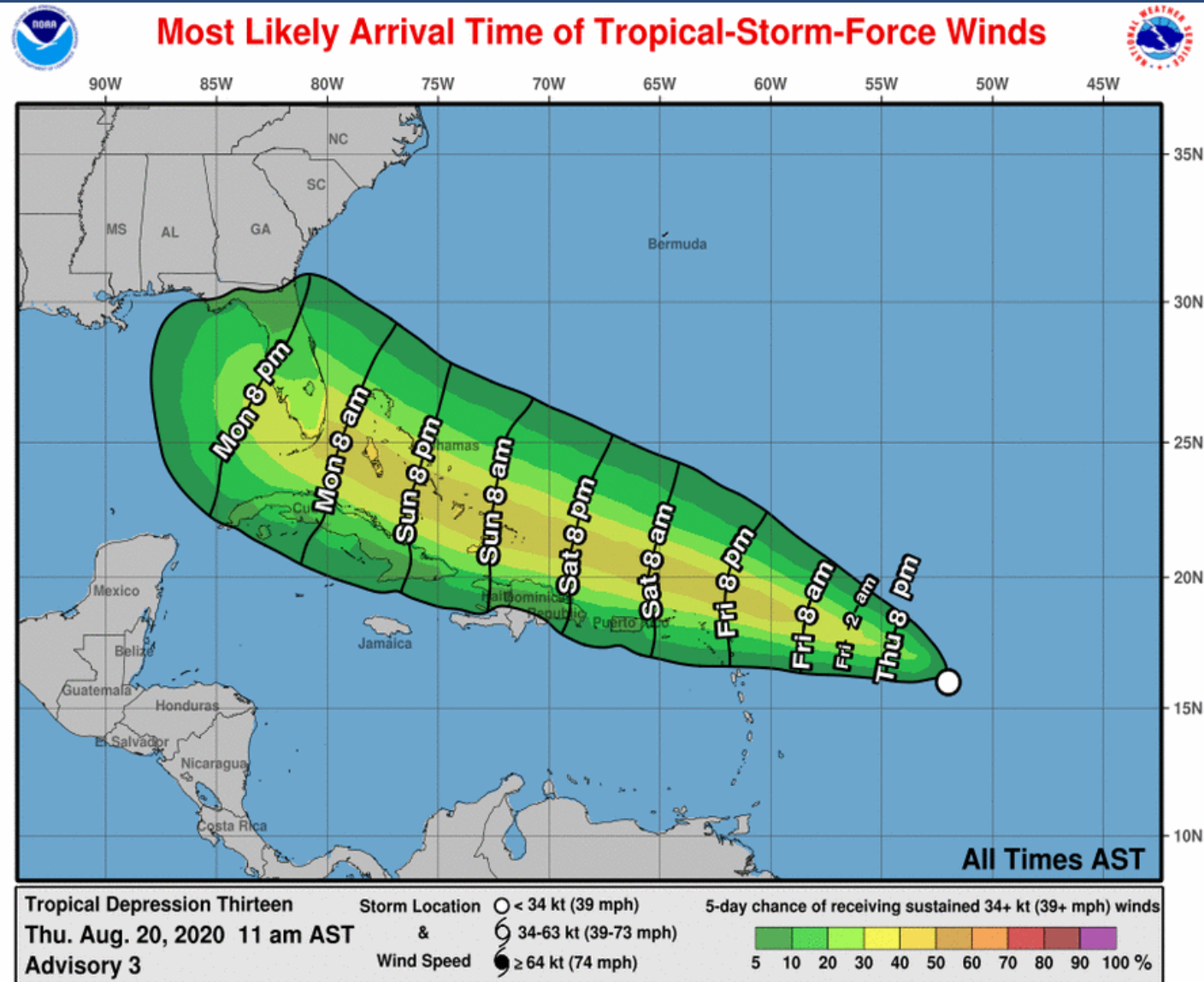
TROPICALTIDBITS.COM





# Time of Arrival & Wind Speed Probabilities

**MOST LIKELY** Time of Arrival of Tropical Storm Force Winds (>39 mph)



Key West: 29%  
Marathon: 34%  
Miami: 29%  
Fort Lauderdale: 38%  
West Palm Beach: 34%  
Fort Pierce: 28%  
Orlando: 15%  
Daytona Beach: 11%  
Naples: 34%  
Fort Myers: 24%  
Tampa: 26%  
Cedar Key: 20%  
Apalachicola: 13%  
Panama City: 10%

Tropical storm force winds will likely begin Monday morning in South Florida and the Keys, but could begin as early as Sunday evening.





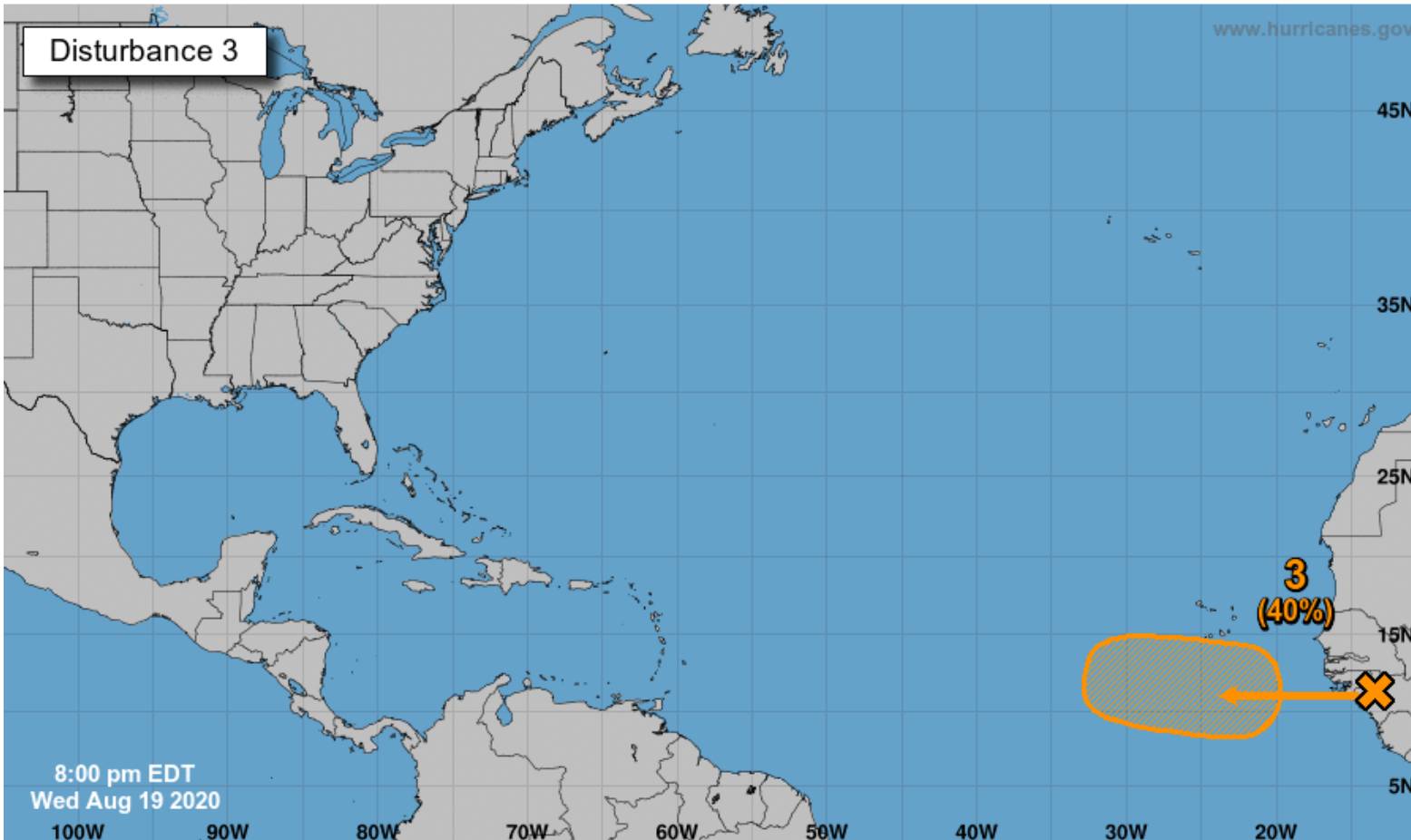
# Tropical Weather Outlook

Possible Area of Development During the Next 5 Days ([LINK](#))



## Five-Day Graphical Tropical Weather Outlook

National Hurricane Center Miami, Florida



A tropical wave over western Africa is producing disorganized showers and thunderstorms near the Africa coast. This wave is expected to move over the far eastern tropical Atlantic on Friday, and some slow development is possible through the weekend while it moves west-northward at 15-20 mph across the eastern tropical Atlantic.

**This system does not need to be monitored at this time.**

**\*Formation chance through 48 hrs...low...20%**

**\*Formation chance through 5 days...medium...40%**

Current Disturbances and Five-Day Cyclone Formation Chance: < 40% 40-60% > 60%

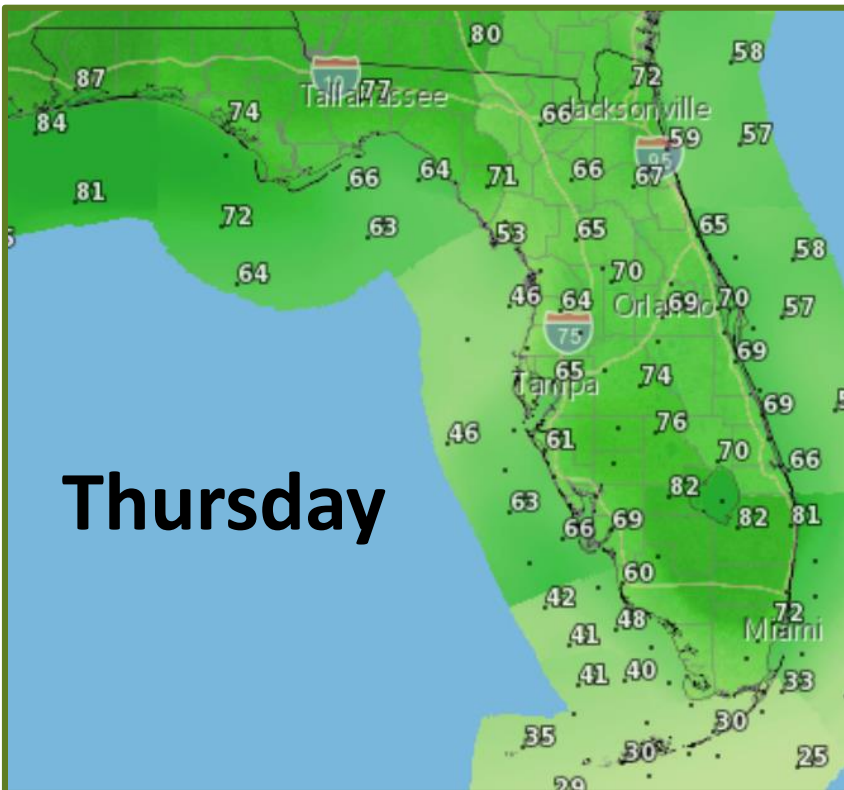
Tropical or Sub-Tropical Cyclone: Depression Storm Hurricane

Post-Tropical Cyclone or Remnants

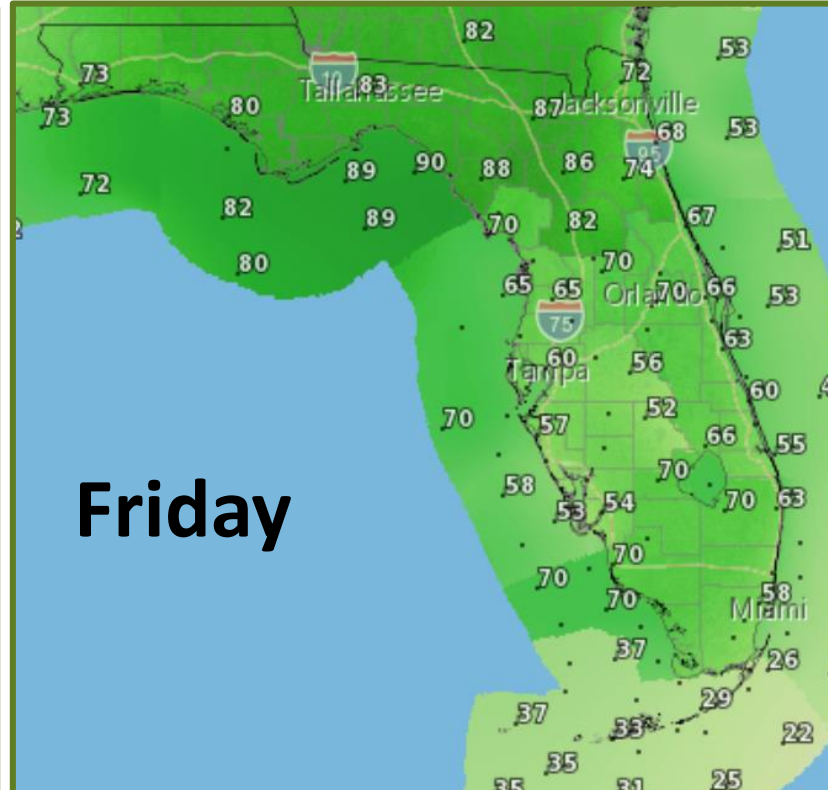


# Rain Chances Next 3 Days

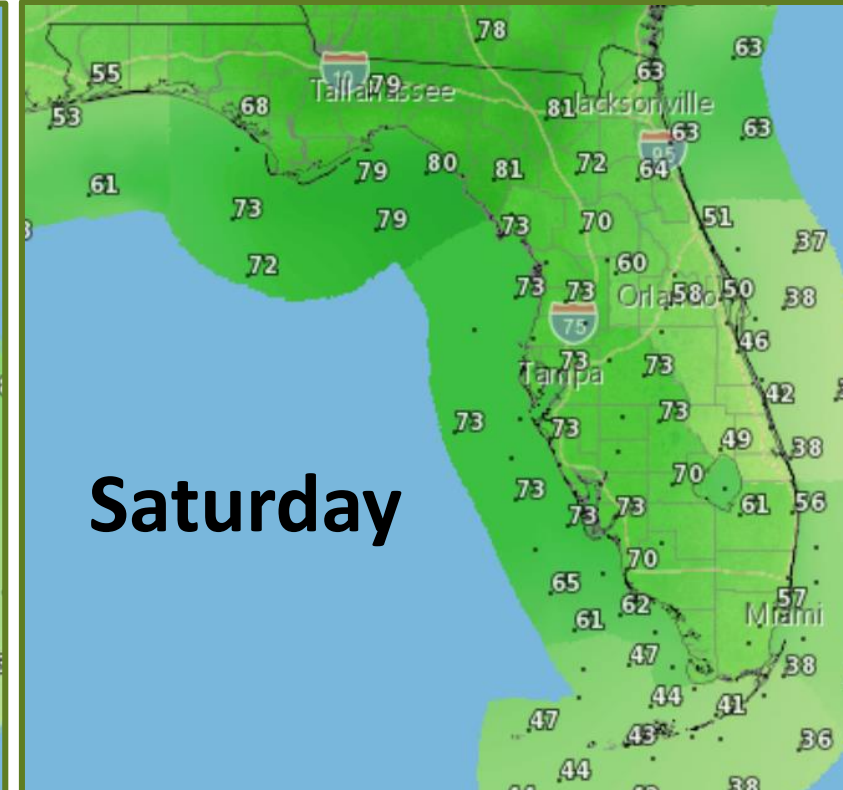
**\*\*Unrelated to the Tropics\*\***



**Thursday**



**Friday**



**Saturday**

**High rain chances statewide! Multiple rounds of storms throughout the day and continuing into the overnight, especially along the Gulf Coast.**





# Severe Weather & Flood Threat

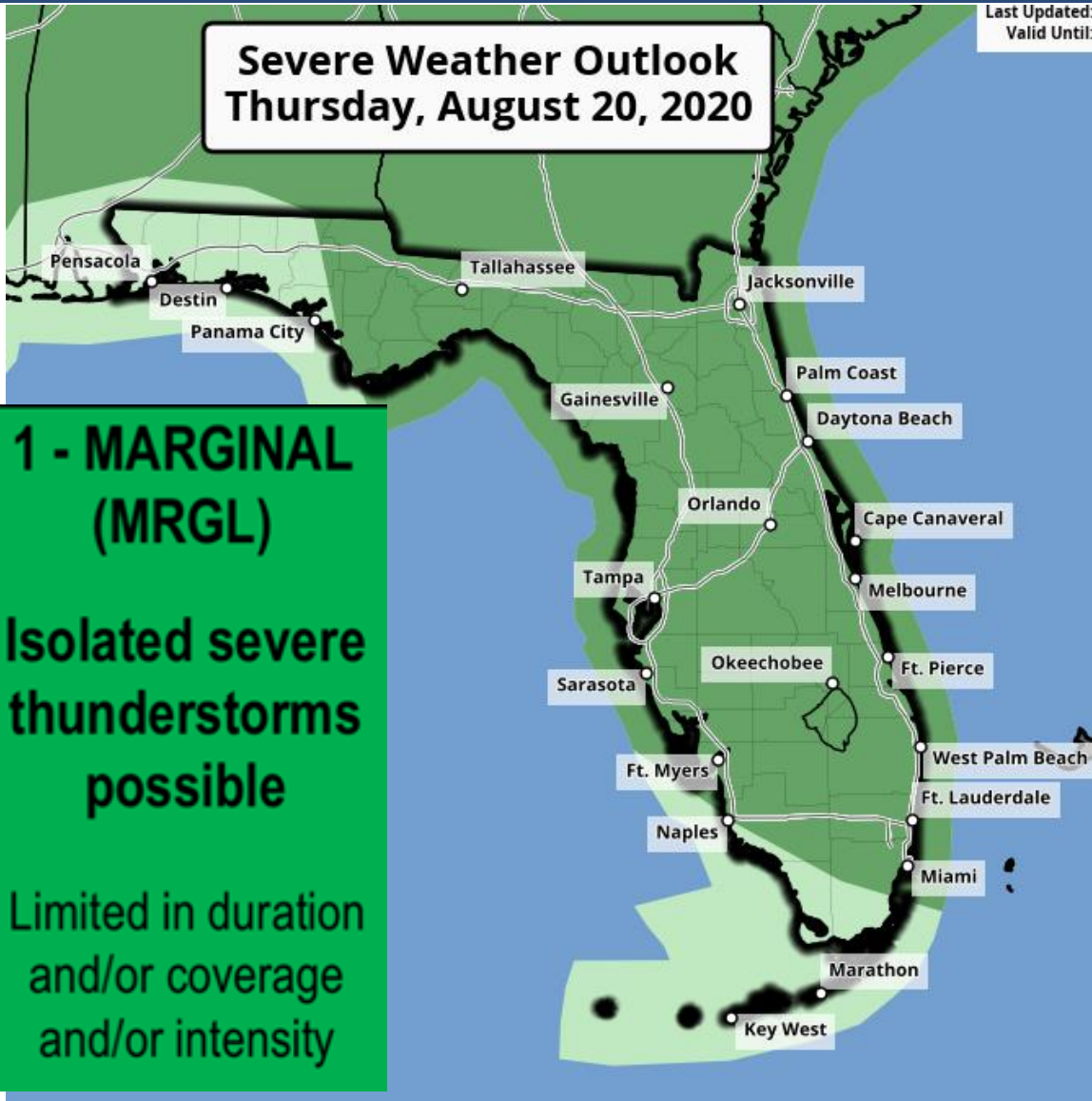
## Severe Weather Outlook Thursday, August 20, 2020

Last Updated:  
Valid Until:

**1 - MARGINAL  
(MRGL)**

**Isolated severe  
thunderstorms  
possible**

**Limited in duration  
and/or coverage  
and/or intensity**

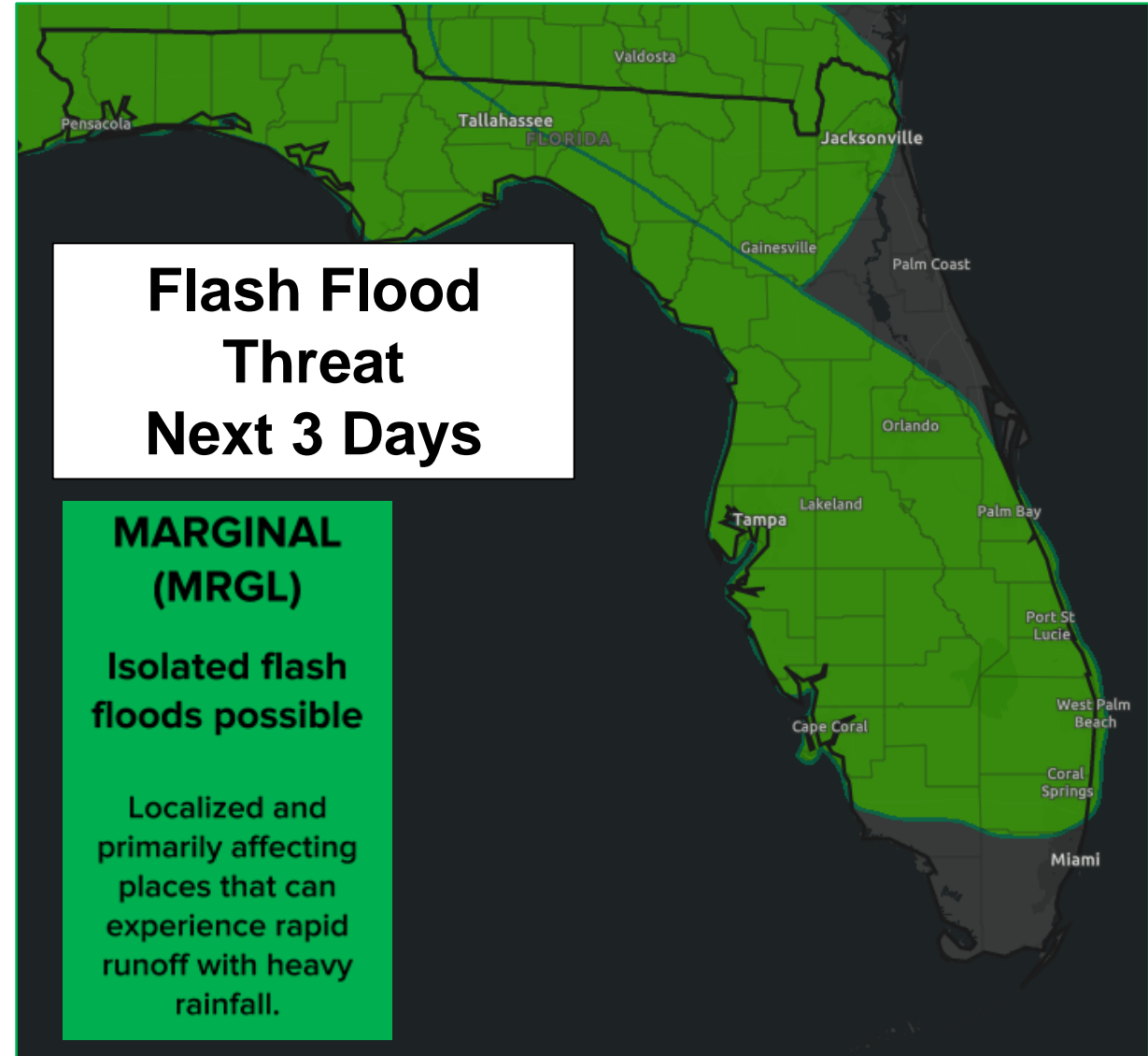


## Flash Flood Threat Next 3 Days

**MARGINAL  
(MRGL)**

**Isolated flash  
floods possible**

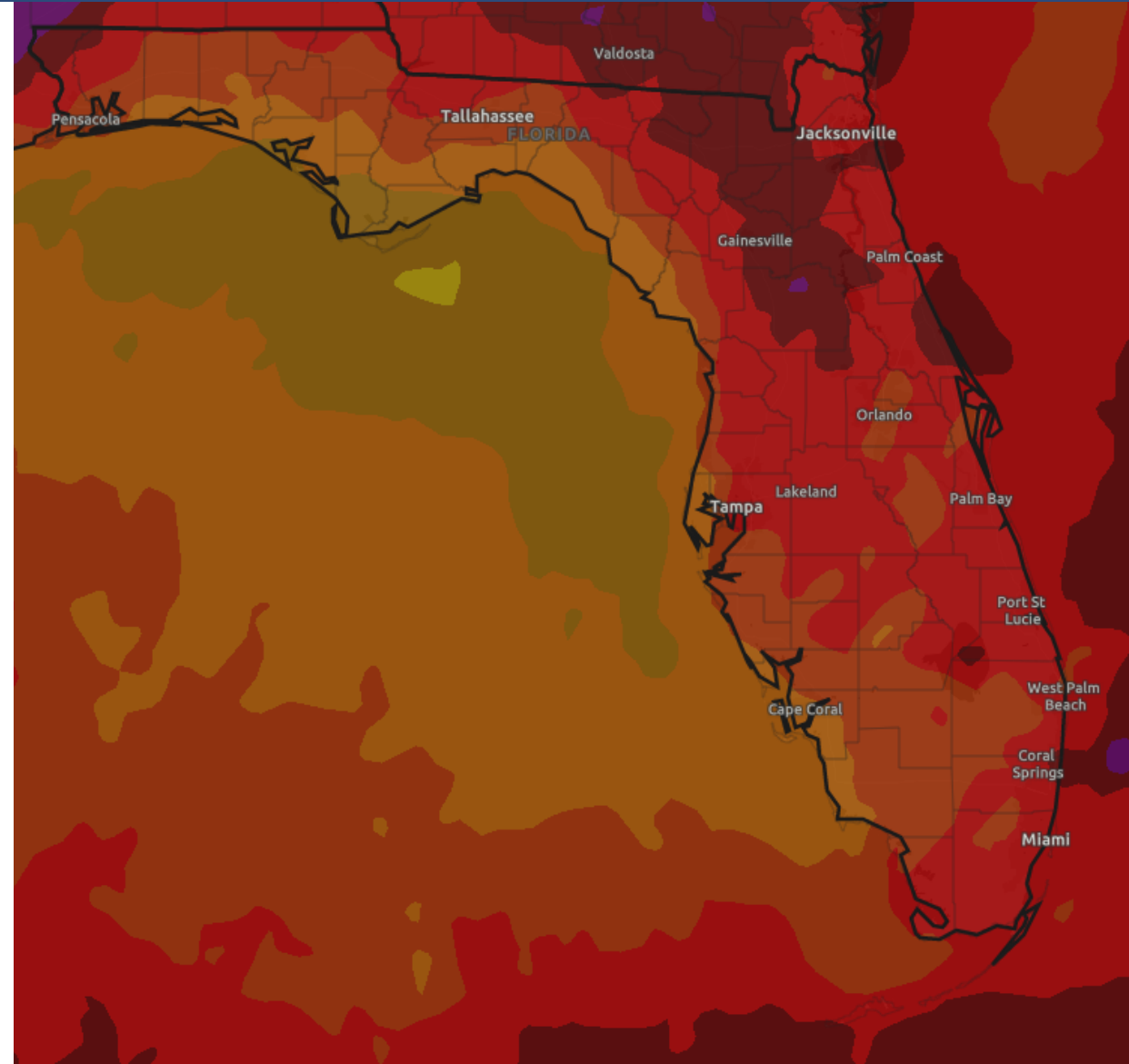
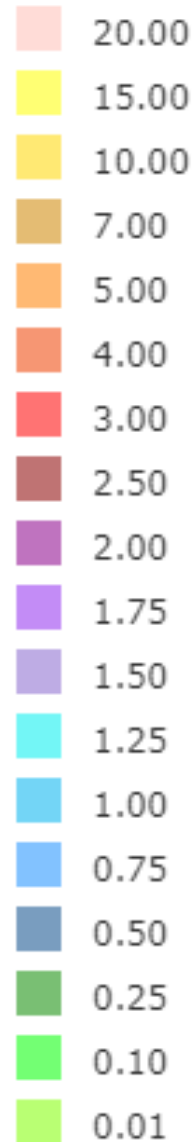
**Localized and  
primarily affecting  
places that can  
experience rapid  
runoff with heavy  
rainfall.**





# Forecast Rainfall Totals Next 7 Days

- A widespread 3-7" expected across the state this week
- Locally 10"+, especially along the Gulf Coast
- Storms will be very efficient rainfall producers, and could produce 2-4" of rain within an hour.
- There is an isolated flash flood threat each day across much of the state.







# Overall Summary

## **Tropical Depression #13 – Central Atlantic**

- Invest 98L became organized last night and was designated Tropical Depression #13.
- The center of TD 13 is located about 750 miles east-southeast of the northern Leeward Islands, moving west-northwest at 21 mph.
- Maximum sustained winds are near 35 mph, and TD 13 is likely to become a tropical storm later today. TD 13 is forecast to become a hurricane by Monday.
- The center of TD 13 will likely pass near South Florida and the Keys on Monday and enter the Gulf of Mexico late Monday or Tuesday.
- Impacts to Florida are likely from TD 13.

## **Tropical Depression #14 – Central Caribbean**

- Invest 97L over the central Caribbean has become better organized this morning and has been designated Tropical Depression #14.
- The center of TD 14 is located about 235 miles east of Cabo Gracias a Dios on the Nicaragua/Honduras border, moving west at 21 mph.
- Maximum sustained winds are near 35 mph, and this system is expected to become a tropical storm later today or tonight. TD 14 could be near hurricane strength by Saturday near the Yucatan Peninsula.

## **Tropical Wave near the Coast of Africa**

- A tropical wave moving off the coast of Africa may gradually develop later this week. The National Hurricane Center gives the system a near 20% (low) chance of development over the next 48 hours and a 40% (low) chance of development over the next 5 days.



# Florida Summary

## Florida Outlook:

- Tropical Depression #13 poses a direct threat to Florida.
  - Tropical storm force winds are likely to begin by Monday morning South Florida and the Florida Keys, but may begin as early as Sunday night.
  - Heavy rainfall is also expected, but exact totals are still unknown. Flash flooding is a threat.
  - It remains too early to determine exact surge, tornado, and Lake Okeechobee impacts, if any.
  - Tropical Depression #14 may create swells across the Gulf Coast once it enters the Gulf, possibly in conjunction with TD #13.
  - Dangerous rip currents expected statewide from both TD #13 and TD #14.
  - No impacts are expected from the wave over Africa at this time.
- 
- Unrelated to the tropical systems, a stalled cold front will bring high rain chances to the state this week, with widespread rainfall totals of 2-4" over the next 5 days. A localized flash flood and severe weather threat exists each afternoon.

The next briefing packet will be issued this afternoon. For the latest information on the tropics, please visit the National Hurricane Center website at [www.hurricanes.gov](http://www.hurricanes.gov).





# TROPICAL UPDATE



Created by:

Cameron Young, Assistant State Meteorologist

[Cameron.Young@em.myflorida.com](mailto:Cameron.Young@em.myflorida.com)

State Meteorological Support Unit

Florida Division of Emergency Management

Users wishing to subscribe (approval pending) to this distribution list, register at:

[https://public.govdelivery.com/accounts/FLDEM/subscriber/new?topic\\_id=SERT\\_Met\\_Tropics](https://public.govdelivery.com/accounts/FLDEM/subscriber/new?topic_id=SERT_Met_Tropics).

Other reports available for subscription are available at:

<https://public.govdelivery.com/accounts/FLDEM/subscriber/new?preferences=true>