



TROPICAL UPDATE



11:00 AM EDT

Wednesday, August 19, 2020

Invest 97L – In Eastern Caribbean (80%)

Invest 98L – In Central Atlantic (90%)

Tropical Wave Near Africa (20%)

This update is intended for government and emergency response officials, and is provided for informational and situational awareness purposes only. Forecast conditions are subject to change based on a variety of environmental factors. For additional information, or for any life safety concerns with an active weather event please contact your County Emergency Management or Public Safety Office, local National Weather Service forecast office, or visit the National Hurricane Center website at www.hurricanes.gov.



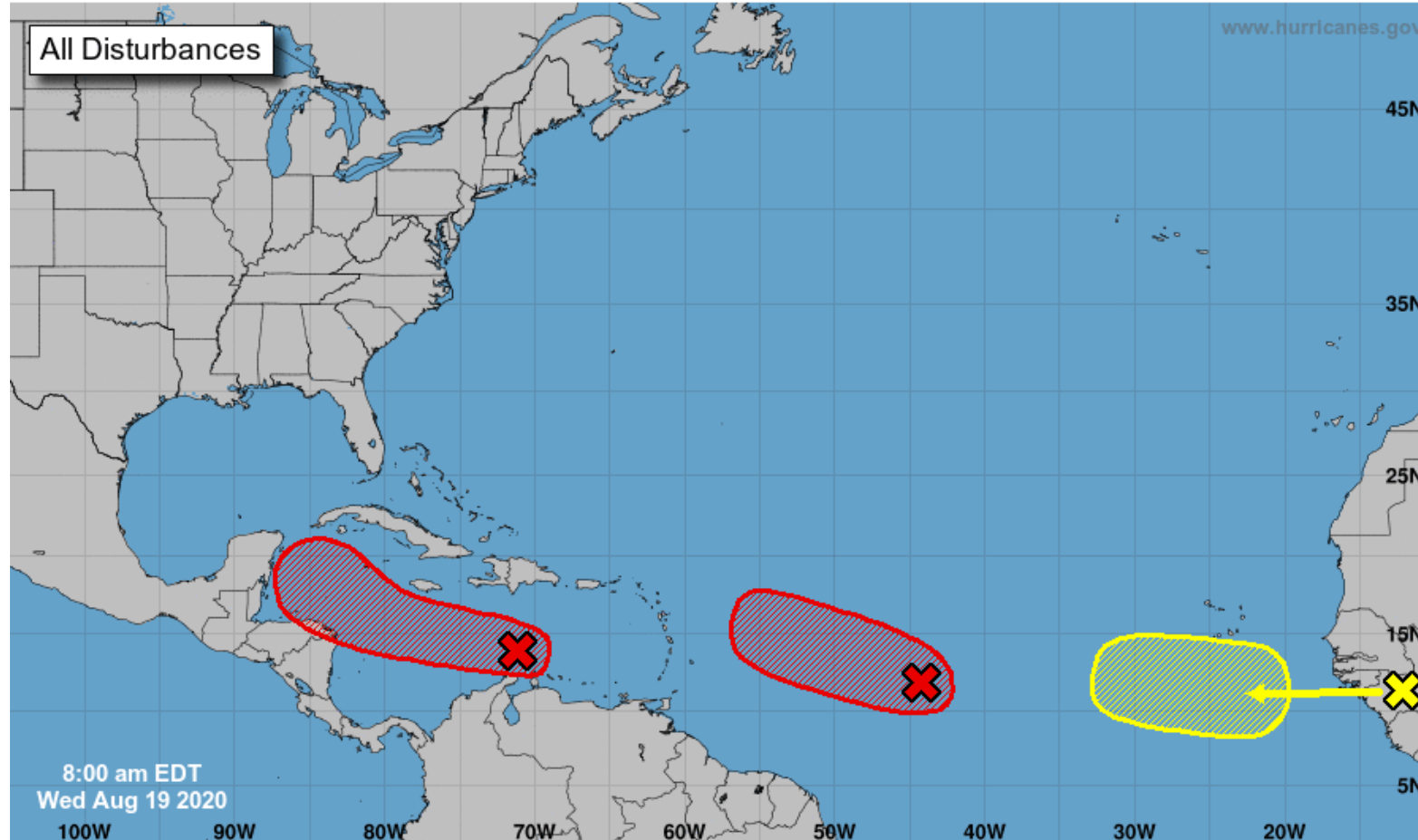
Tropical Weather Outlook

Possible Areas of Development During the Next 5 Days ([LINK](#))



Five-Day Graphical Tropical Weather Outlook

National Hurricane Center Miami, Florida



Current Disturbances and Five-Day Cyclone Formation Chance: < 40% 40-60% > 60%

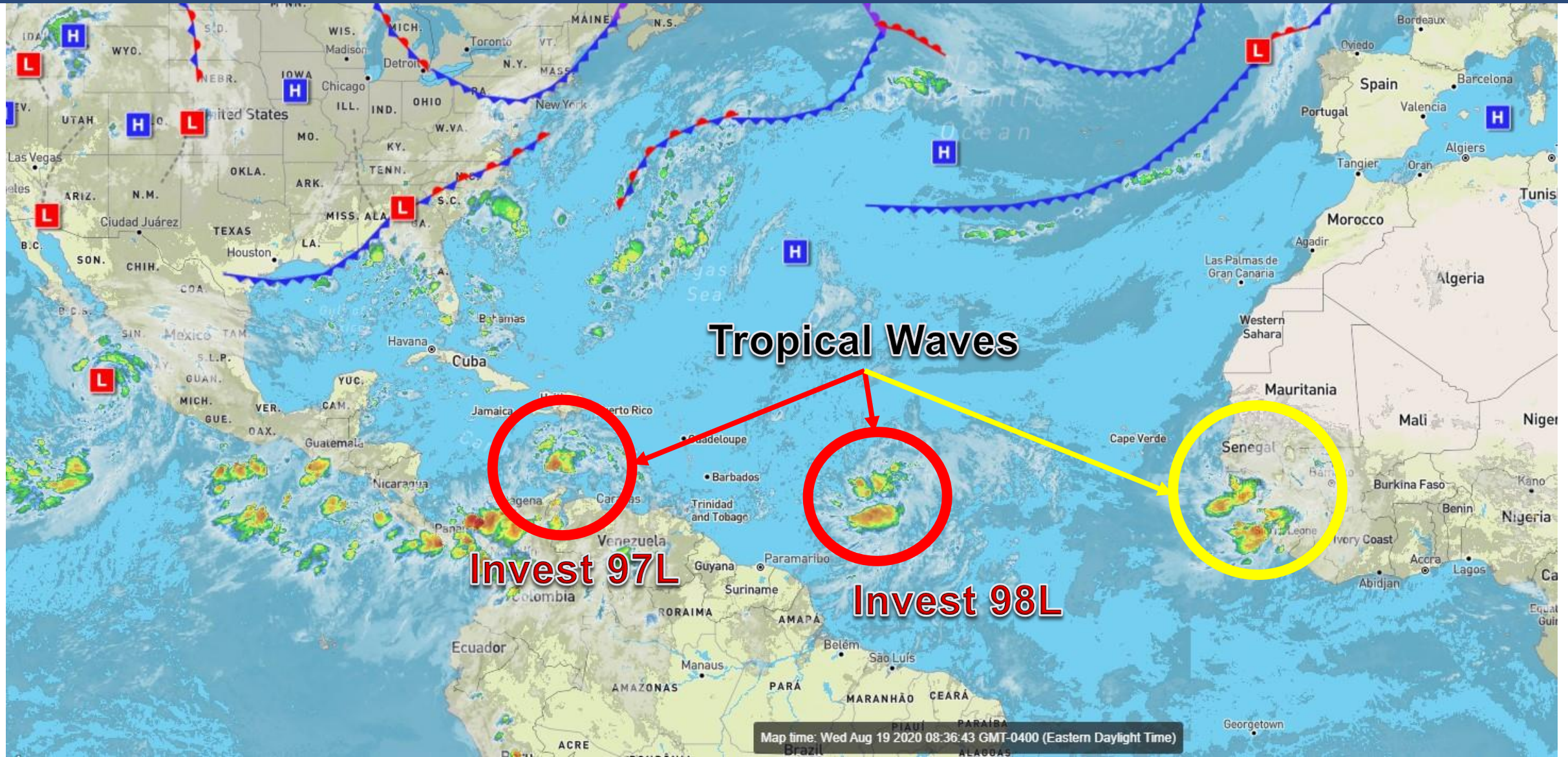
Tropical or Sub-Tropical Cyclone: Depression Storm Hurricane

Post-Tropical Cyclone or Remnants



Atlantic Basin Satellite Image

Chance of development: — None — Low — Medium — High





Steering Currents

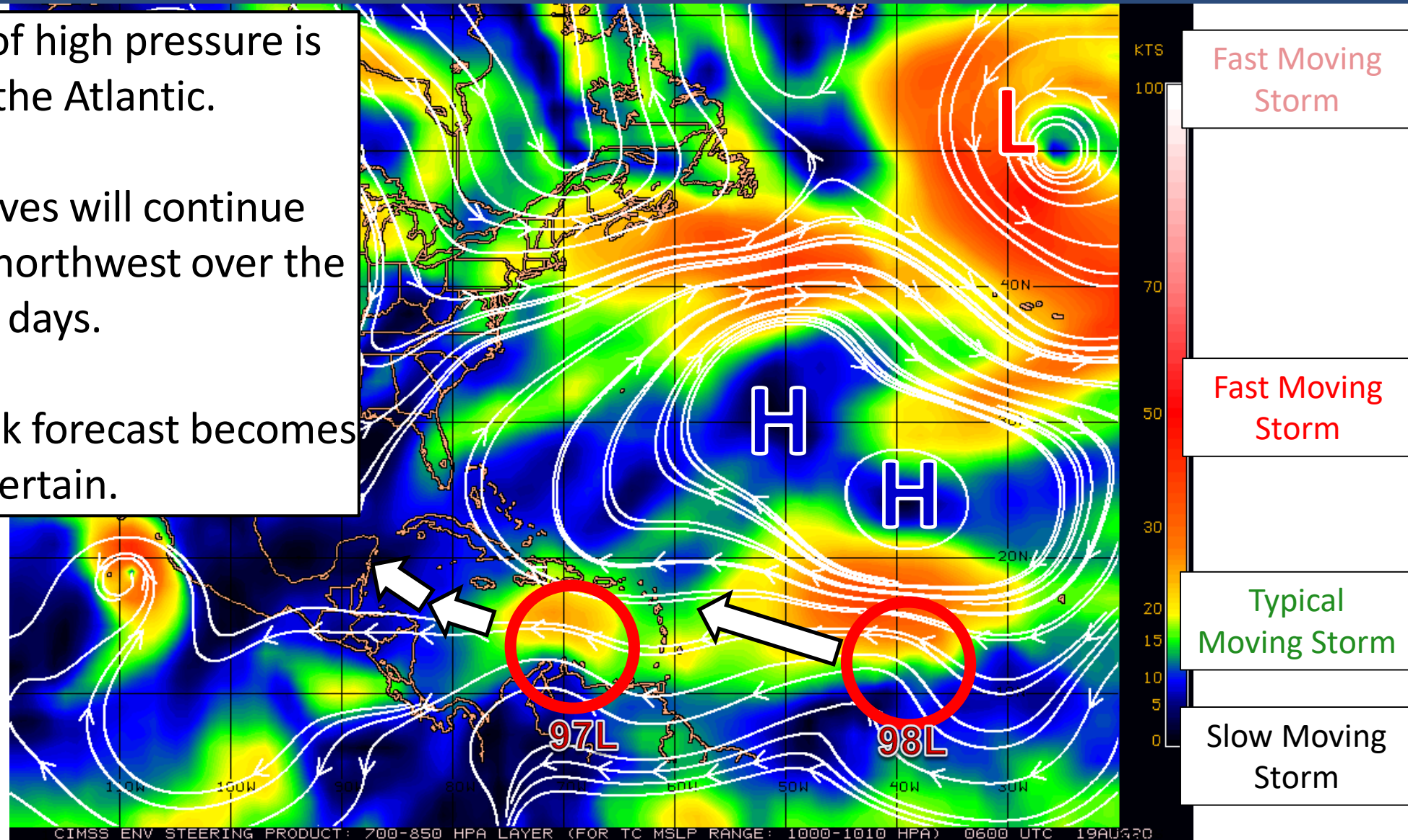
What is moving the systems?

Color denotes the movement speed through the atmosphere and thin white lines denote direction. Tightly clustered white lines represent faster movement as well.

A large, strong area of high pressure is centered over the Atlantic.

The two tropical waves will continue moving west or west-northwest over the next few days.

This weekend, the track forecast becomes more uncertain.





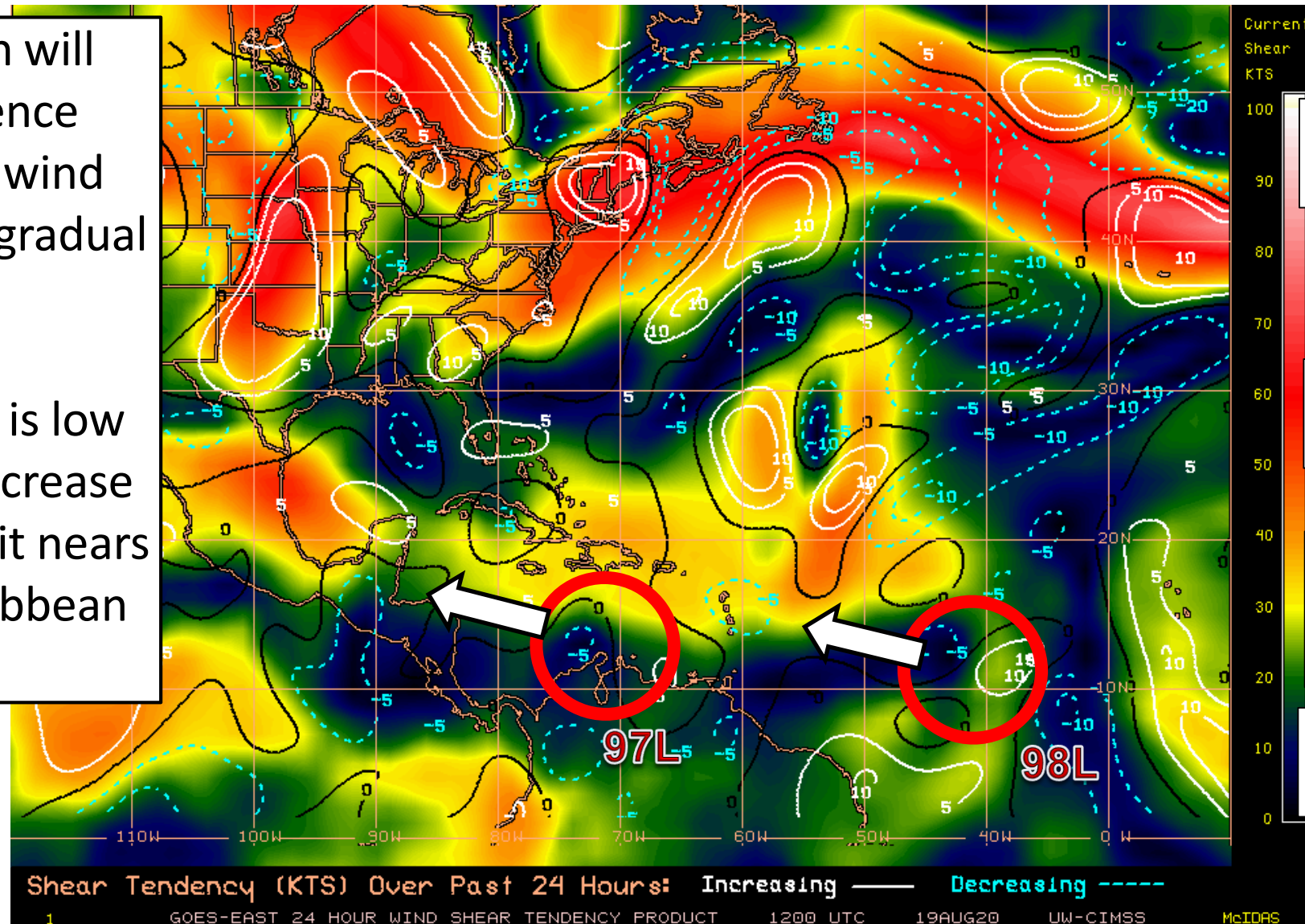
Wind Shear

Is the environment favorable for the systems?

Color denotes the amount of wind shear and the lines denote how it have changed over the last 24 hours (dotted lines show decreasing shear and solid lines show increasing).

97L in the Caribbean will continue to experience minimal amounts of wind shear which will favor gradual development.

While the wind shear is low for 98L today, it will increase some this weekend as it nears the northeastern Caribbean Islands.



HIGH Shear
(Unfavorable)

HIGH Shear
(Unfavorable)

MODERATE
Shear
(Neutral)

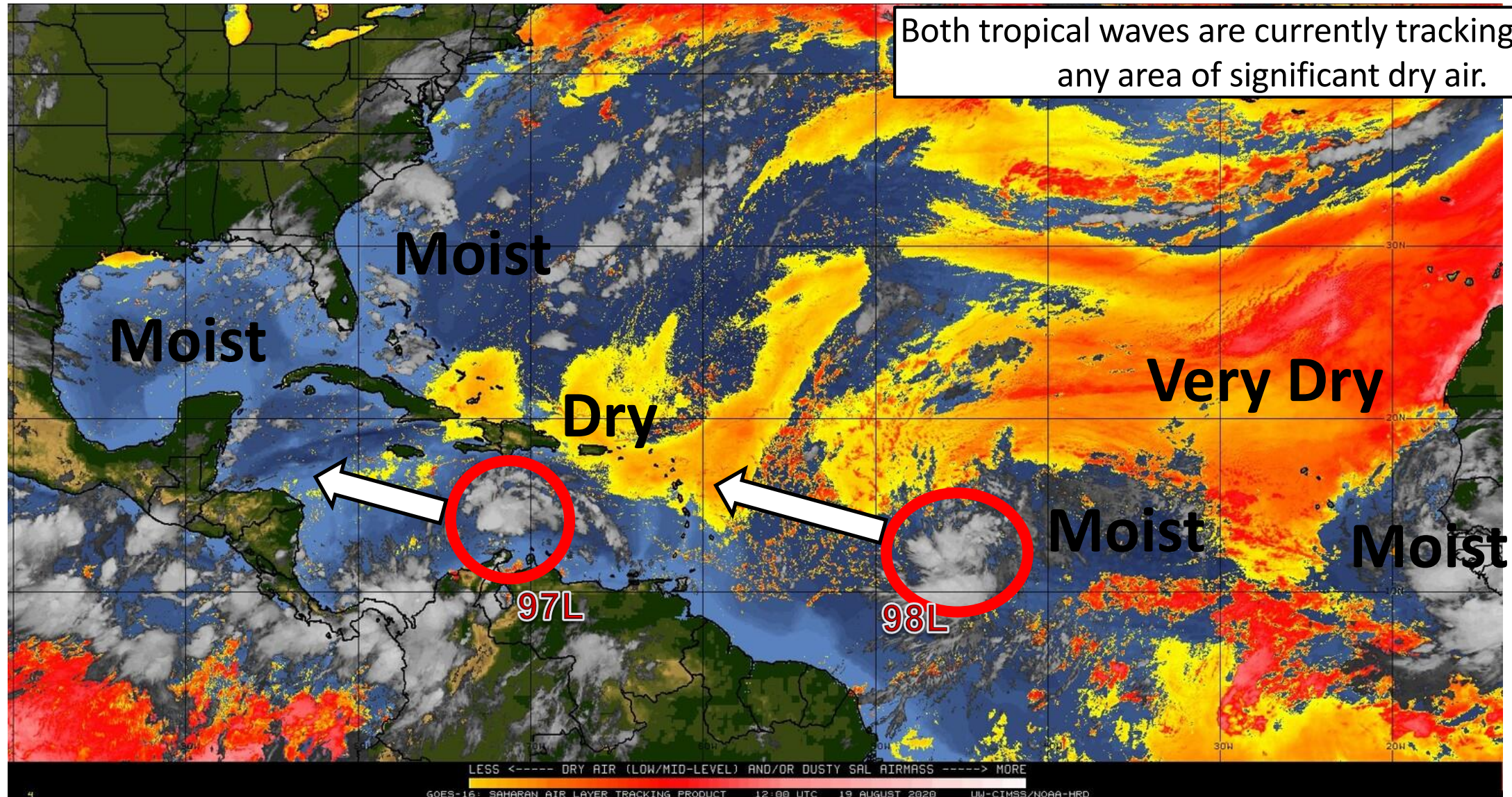
LOW Shear
(Favorable)



Dry Air & Saharan Dust

Is the environment favorable for the systems?

Color denotes concentration of Saharan Dust or dry, stable air.





Sea Surface Temperatures & Anomalies

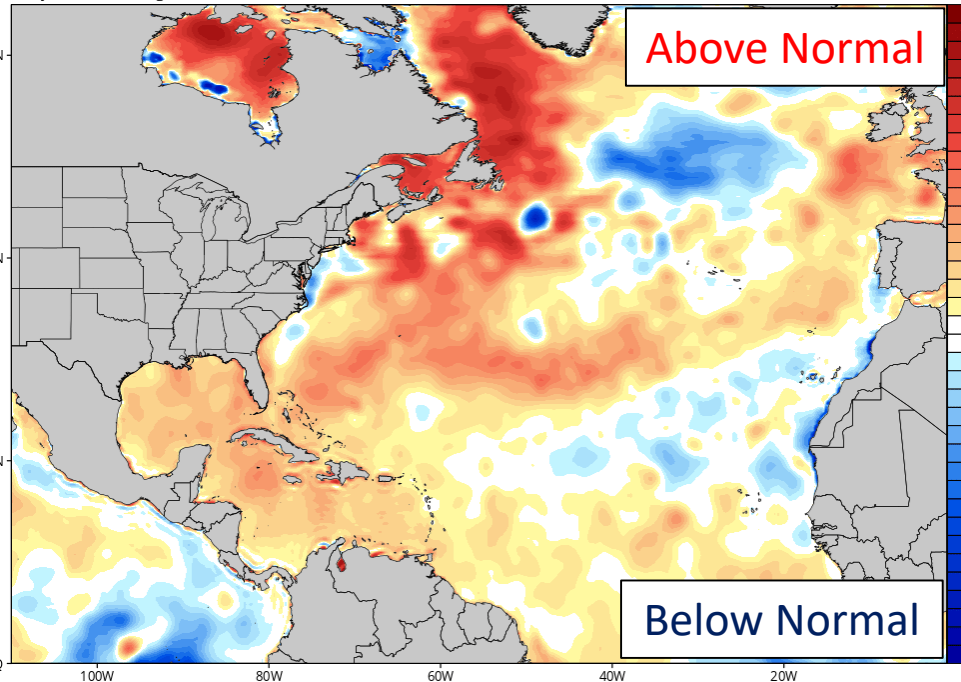
Is the ocean favorable for the systems?

Water temperatures will warm the further west the tropical waves move.

Water temperatures are above normal across much of the Atlantic, Caribbean, and Gulf of Mexico, supporting tropical development.

CDAS Sea Surface Temperature Anomaly (°C) (based on CFSR 1981-2010 Climatology)
Analysis Time: 06z Aug 19 2020

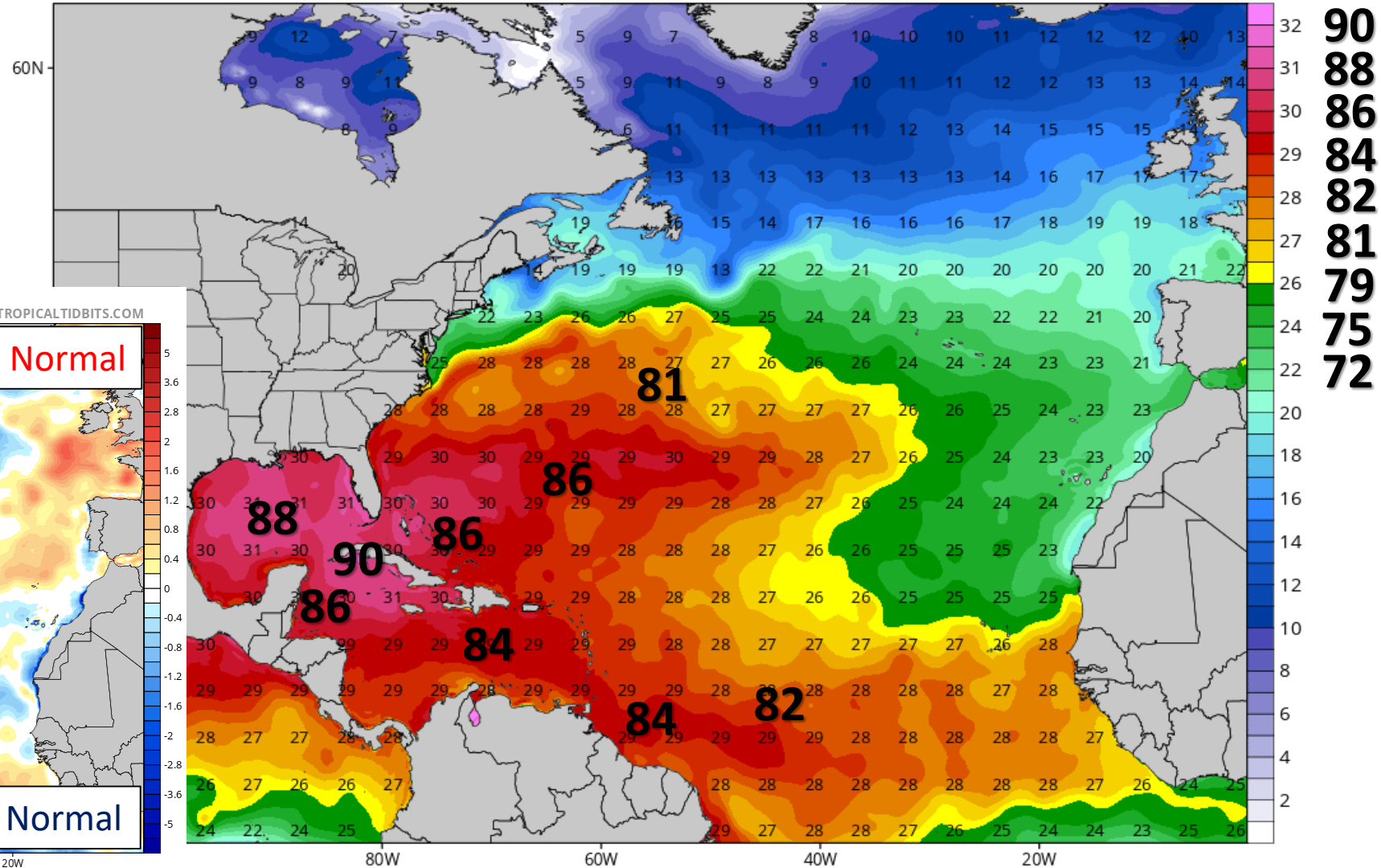
TROPICALTIDBITS.COM



CDAS Sea Surface Temperature (°C)

Analysis Time: 06z Aug 19 2020

TROPICALTIDBITS.COM





Tropical Weather Outlook

Possible Area of Development During the Next 5 Days ([LINK](#)) – Invest 97L



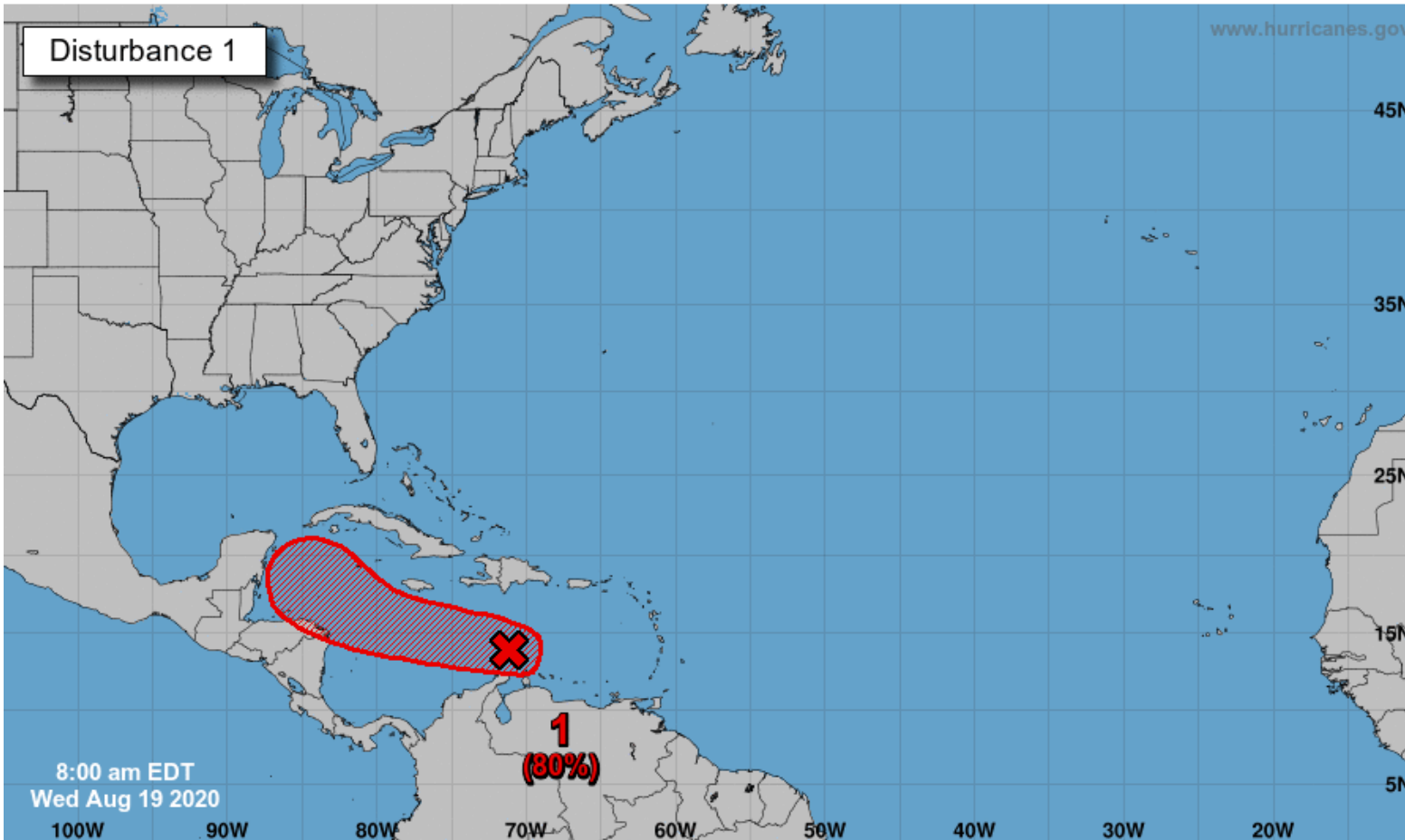
Five-Day Graphical Tropical Weather Outlook

National Hurricane Center Miami, Florida



www.hurricanes.gov

Disturbance 1



Current Disturbances and Five-Day Cyclone Formation Chance:
Tropical or Sub-Tropical Cyclone: < 40% 40-60% > 60%
 Depression Storm Hurricane
 Post-Tropical Cyclone or Remnants

A tropical wave located over the eastern Caribbean Sea is producing disorganized showers and thunderstorms, along with gusty winds in these thunderstorms.

Some gradual development of this system is possible over next day or so while it moves westward at about 15 to 20 mph across the central Caribbean Sea.

After that time, the wave is forecast to move more slowly west-northwestward, and **a tropical depression is likely to form late this week or this weekend when the system reaches the northwestern Caribbean Sea.**

This system should be monitored closely this week.

The next names on the list are Laura and Marco.

***Formation chance through 48 hrs...medium...40%**

***Formation chance through 5 days...high...80%**

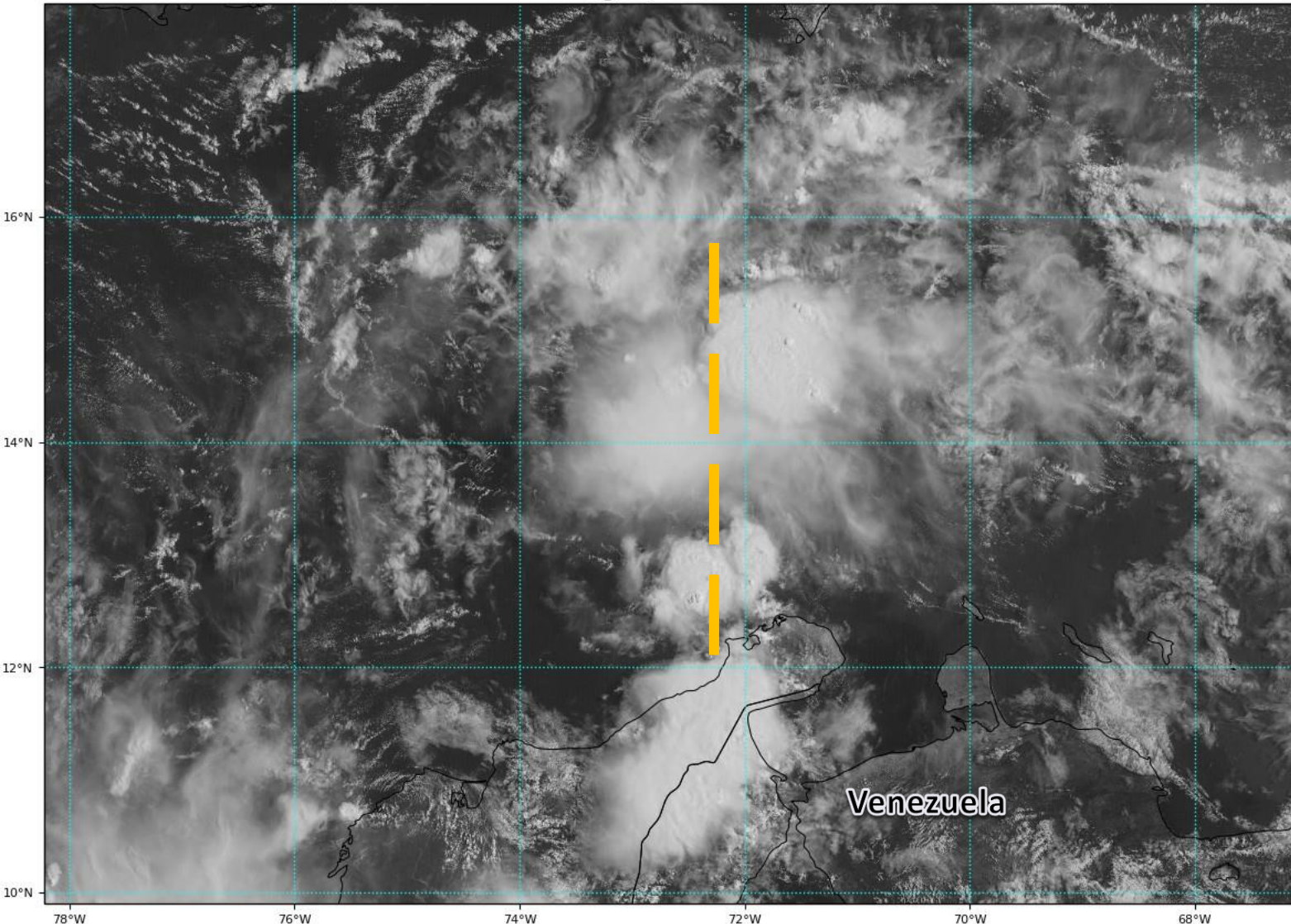


Satellite Imagery

Eastern Caribbean – Invest 97L

GOES-16 Channel 2 (visible) Reflectance at 13:55Z Aug 19, 2020

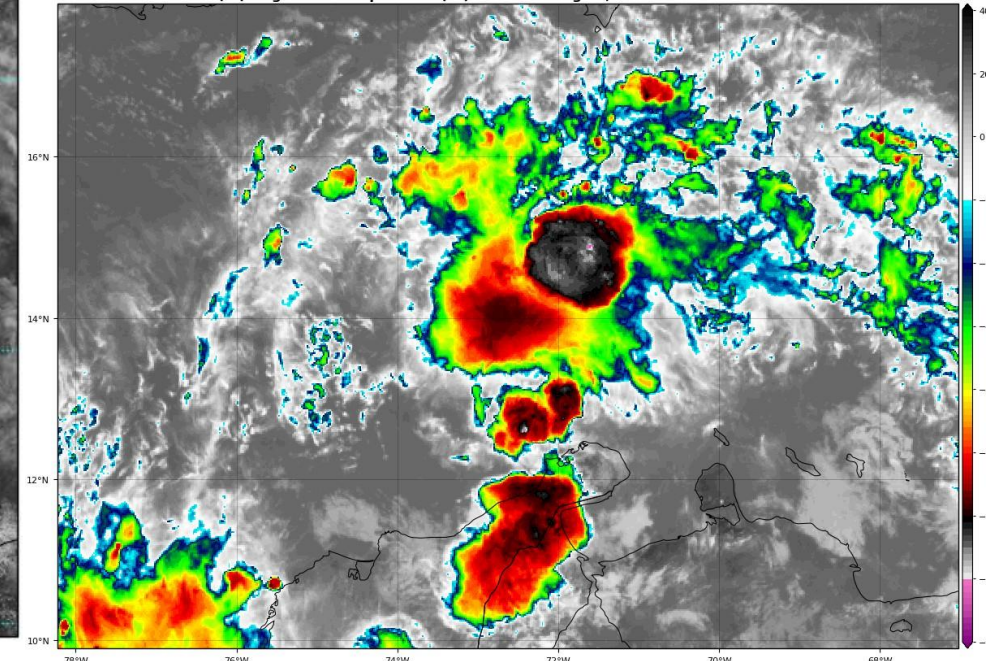
TROPICALTIDBITS.COM



The tropical wave is producing a small area of showers and thunderstorms in the Central Caribbean Sea as it quickly moves west. Some dry air is located to the north but the environment will support gradual development, especially once it moves further west.

GOES-16 Channel 13 (IR) Brightness Temperature (°C) at 13:55Z Aug 19, 2020

TROPICALTIDBITS.COM





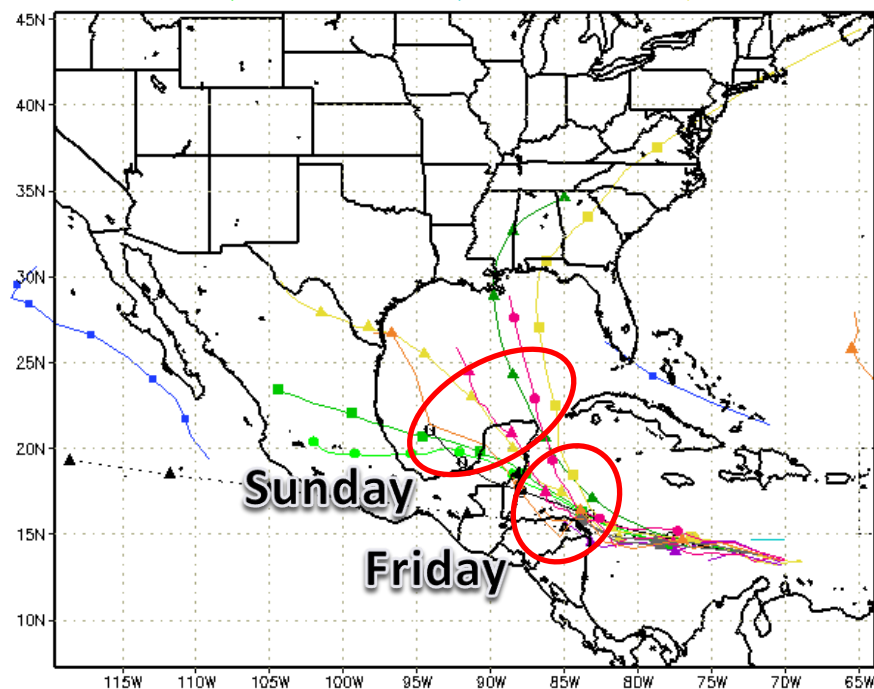
Model Forecast Tracks

Dynamical & Ensembles Models – Invest 97L

The system will move toward the Yucatan or Belize by Friday.
The forecast becomes more uncertain after this point. The forecast ultimately depends on the speed and intensity of 97L.

Legend for Model Forecast Tracks:

- XTRP 19/1200Z
- TVCN 19/1200Z
- TVCX 19/1200Z
- NHC Not Avail
- CLP5 19/1200Z
- TABD 19/1200Z
- TABM 19/1200Z
- TABS 19/1200Z
- HMON 19/0600Z
- HWRP 19/0600Z
- UKM 19/0000Z
- COTC 19/0600Z
- AVNO 19/0600Z
- AEMN 19/0600Z
- APxx 19/0600Z
- CMC 19/0000Z
- EECF 19/0000Z
- EEMN 19/0000Z
- EExx 19/0000Z
- CEMN 19/0000Z

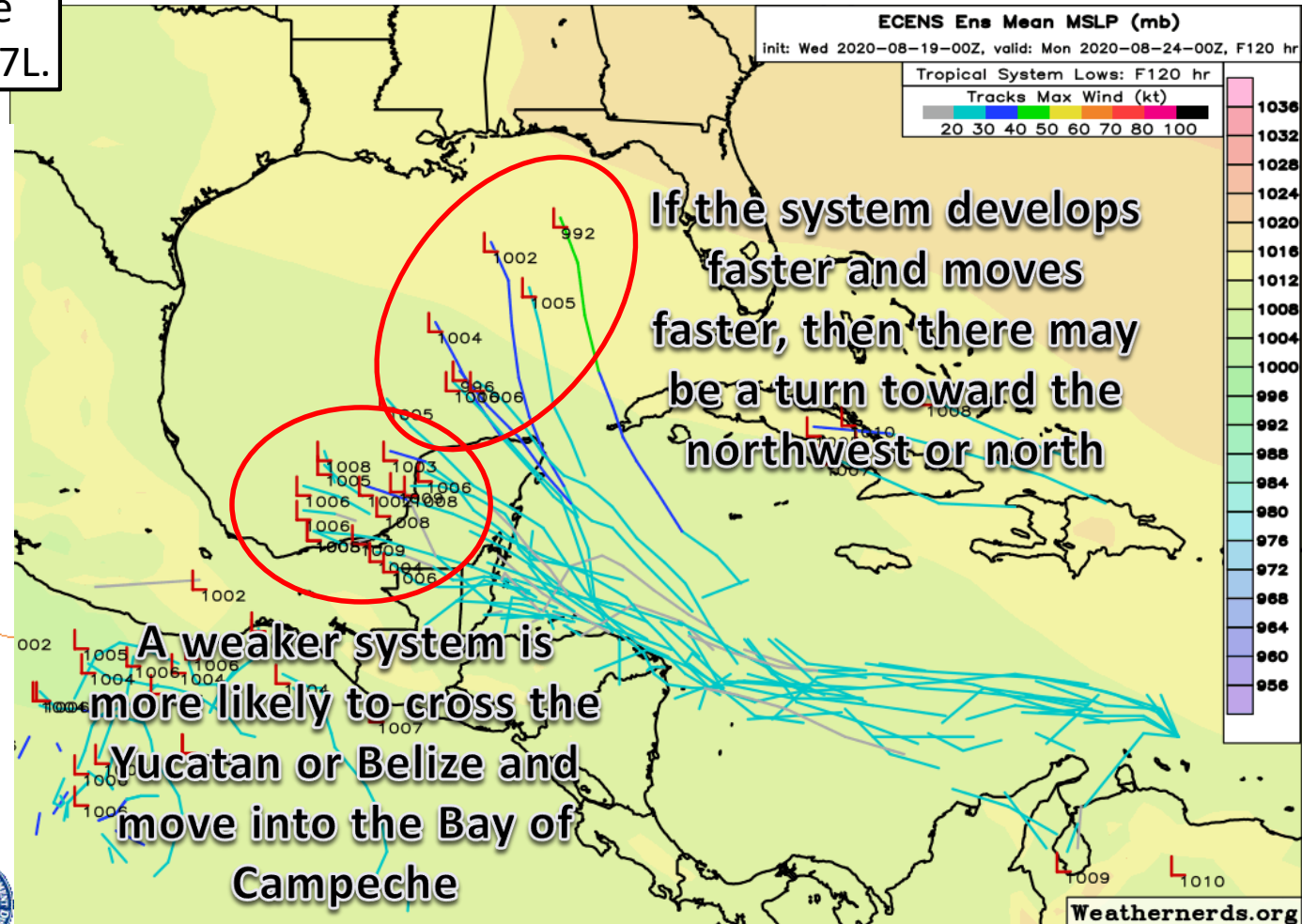


Sunday

Friday

storm_97
sfwmd.gov
weather@sfwmd.gov
19-Aug 10:21EDT

NHC Advisories and County Emergency Management Statements supersede this product. This graphic should complement, not replace, NHC discussions. If anything on this graphic causes confusion, ignore the entire product. For full info, see <https://apps.sfwmd.gov/sfwmd/common/images/weather/plots.html>





Tropical Weather Outlook

Possible Area of Development During the Next 5 Days ([LINK](#)) – Invest 98L



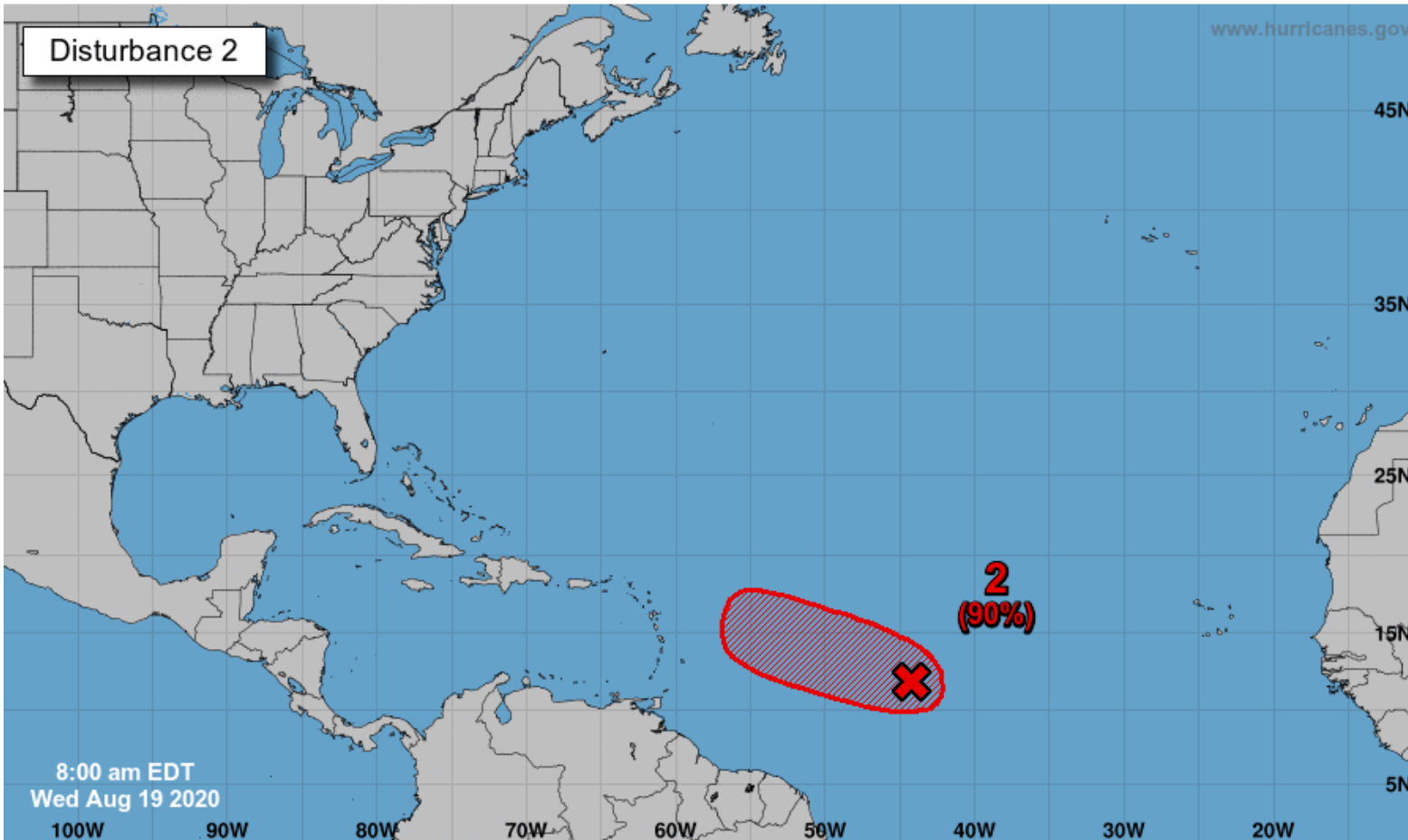
Five-Day Graphical Tropical Weather Outlook

National Hurricane Center Miami, Florida



www.hurricanes.gov

Disturbance 2



An elongated area of low pressure, located a little over 1000 miles east of the Windward Islands continues to produce a concentrated area of showers and thunderstorms mainly on the west side of the disturbance.

Environmental conditions are conducive for further development, and a **tropical depression is expected to form during the next day or two while the system moves generally west-northwestward** at 15 to 20 mph across the central and western portions of the tropical Atlantic.

This system should be monitored closely this weekend and into early next week.

The next names on the list are Laura and Marco.

***Formation chance through 48 hrs...high...90%**

***Formation chance through 5 days...high...90%**

Current Disturbances and Five-Day Cyclone Formation Chance: < 40% 40-60% > 60%
Tropical or Sub-Tropical Cyclone: Depression Storm Hurricane
 Post-Tropical Cyclone or Remnants

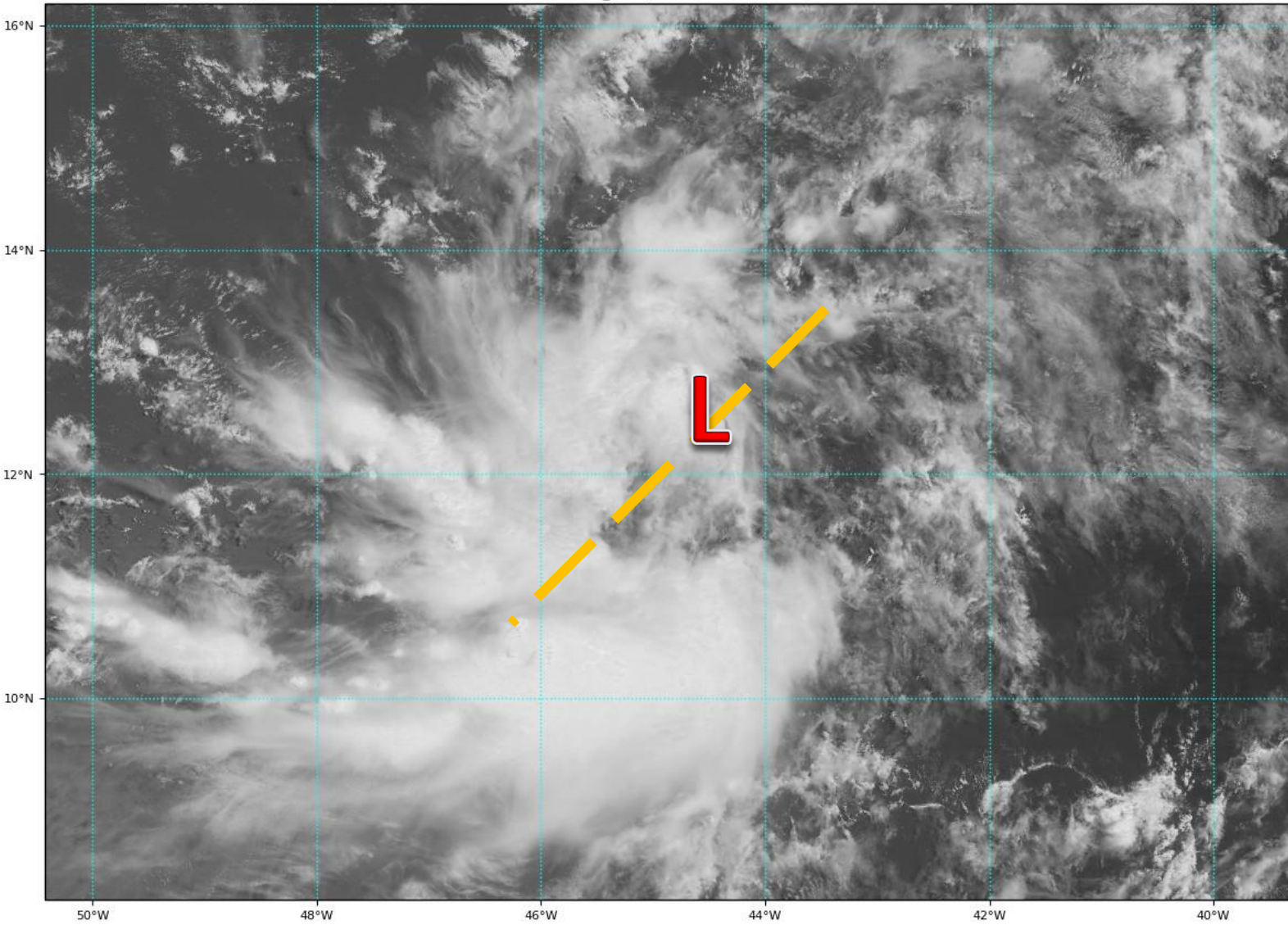


Satellite Imagery

Central Atlantic – Invest 98L

GOES-16 Channel 2 (visible) Reflectance at 13:55Z Aug 19, 2020

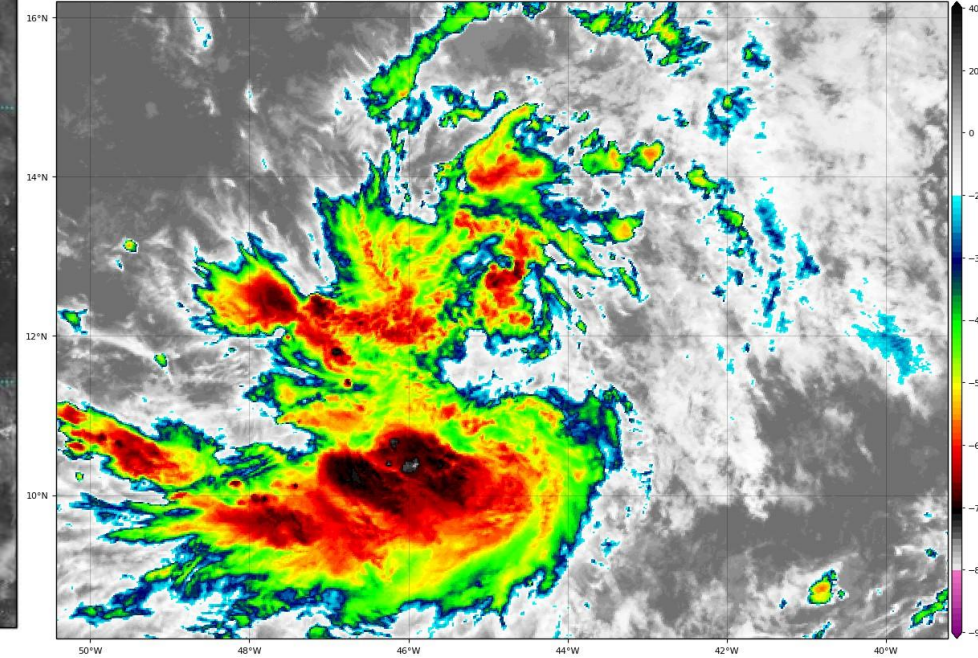
TROPICALTIDBITS.COM



Invest 98L has organized overnight, with an area of low pressure starting to develop on the western edge of the tropical wave. The low pressure center remains broad, but continued organization is likely today.

GOES-16 Channel 13 (IR) Brightness Temperature (°C) at 13:55Z Aug 19, 2020

TROPICALTIDBITS.COM





Model Forecast Tracks

Dynamical & Ensembles Models – Invest 98L

There is abundant uncertainty as models have struggled so far with this system. How much land interaction 98L has with Puerto Rico, Hispaniola, and Cuba will have a lot to say about its future intensity and track.

Initialized at 12z Aug 19 2020

Levi Cowan - tropicaltidbits.com

DO NOT USE THIS MAP
TO MAKE DECISIONS!
SEEK OFFICIAL INFO

Monday
Sunday

Friday

COTI

Invest 98L GEFS Tracks & Min. MSLP (mb)

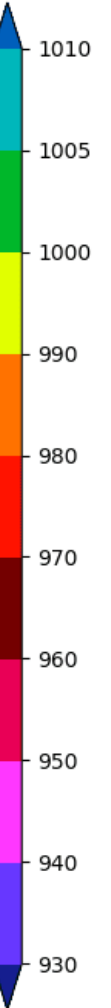
Initialized at 06z Aug 19 2020

Levi Cowan - tropicaltidbits.com

DO NOT USE THIS MAP
TO MAKE DECISIONS!
SEEK OFFICIAL INFO

A system that quickly
develops and avoids the
Greater Antilles may curve
sooner.

A system that slowly
develops or moves over
the Greater Antilles may
make it farther west
before turning



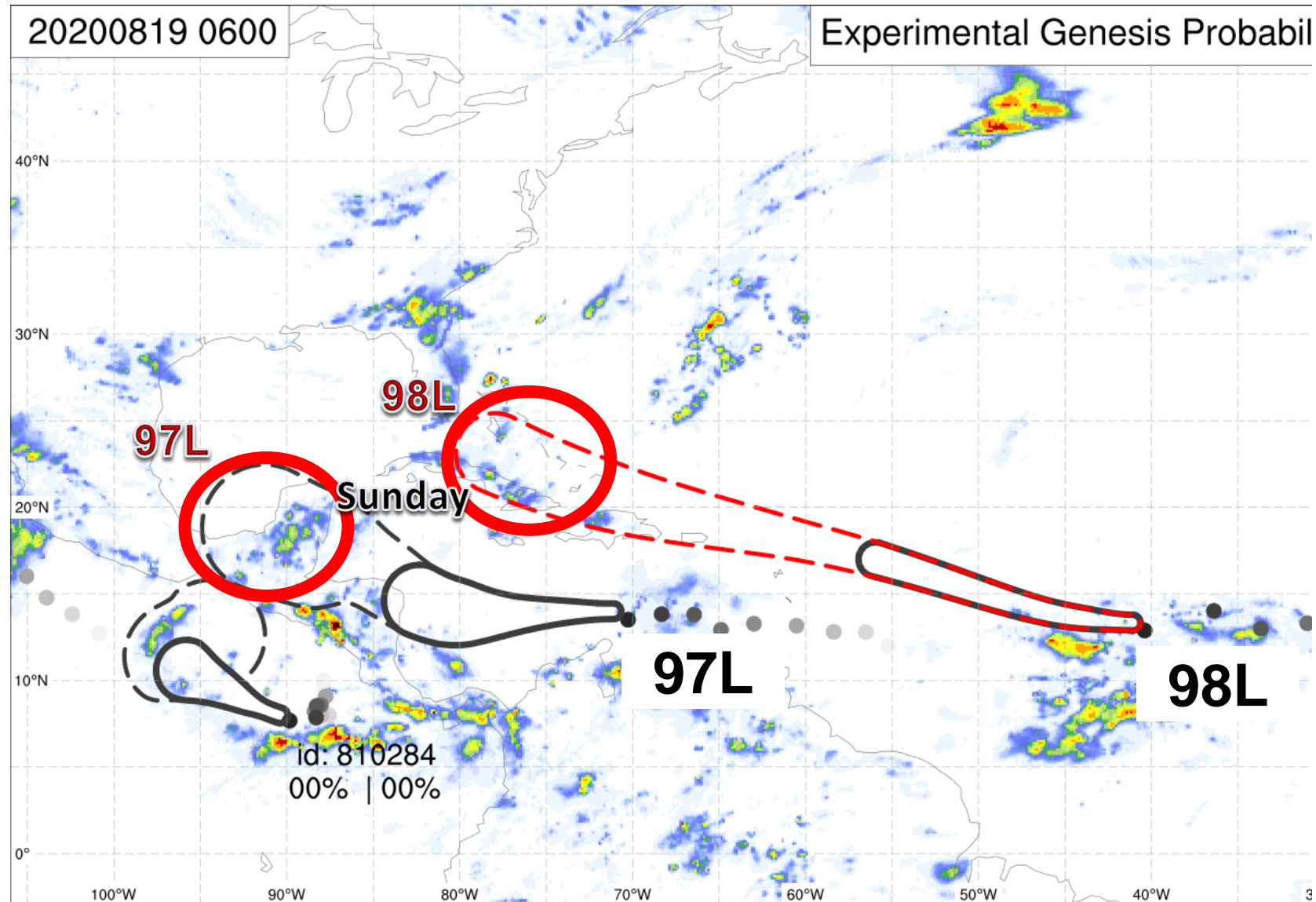


Model Forecast Tracks

Ensembles Models

Both tropical waves will continue to move west or west-northwest over the next 5 days.

On Sunday morning, Invest 97L will be near the Yucatan Peninsula while Invest 98L will be near Hispaniola, Cuba, and the southeastern Bahamas.





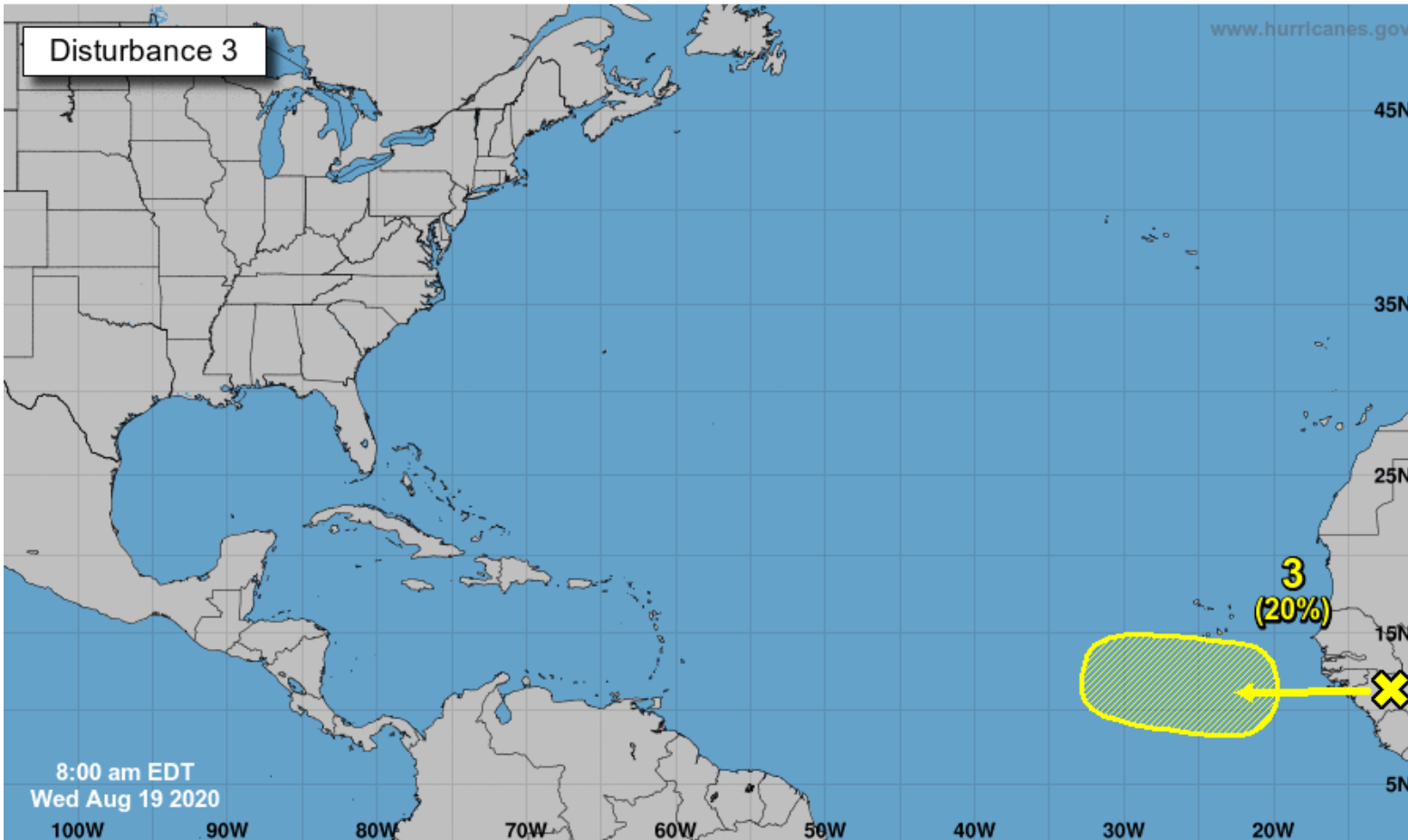
Tropical Weather Outlook

Possible Area of Development During the Next 5 Days ([LINK](#))



Five-Day Graphical Tropical Weather Outlook

National Hurricane Center Miami, Florida



A large area of showers and thunderstorms, located over Guinea and Sierra-Leone, Africa, is associated with a vigorous tropical wave.

Environmental conditions are expected to be marginally conducive for some development of this system while the wave enters the extreme eastern Atlantic on Friday.

By early next week, however, conditions are forecast to become less favorable for tropical cyclone formation while it moves west-northwestward at 15 to 20 mph toward the central tropical Atlantic.

This system does not need to be monitored at this time.

***Formation chance through 48 hrs...low...near 0%**

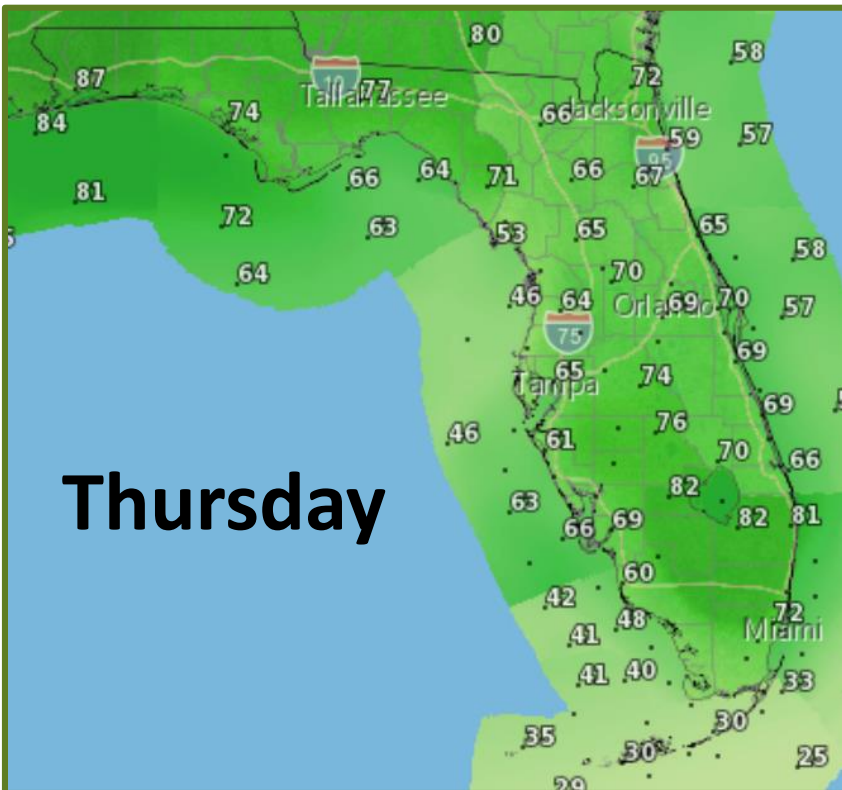
***Formation chance through 5 days...low...20%**

Current Disturbances and Five-Day Cyclone Formation Chance:
 Tropical or Sub-Tropical Cyclone:
 X < 40% X 40-60% X > 60%
 ○ Depression ⚡ Storm ⚡ Hurricane
 ⊗ Post-Tropical Cyclone or Remnants

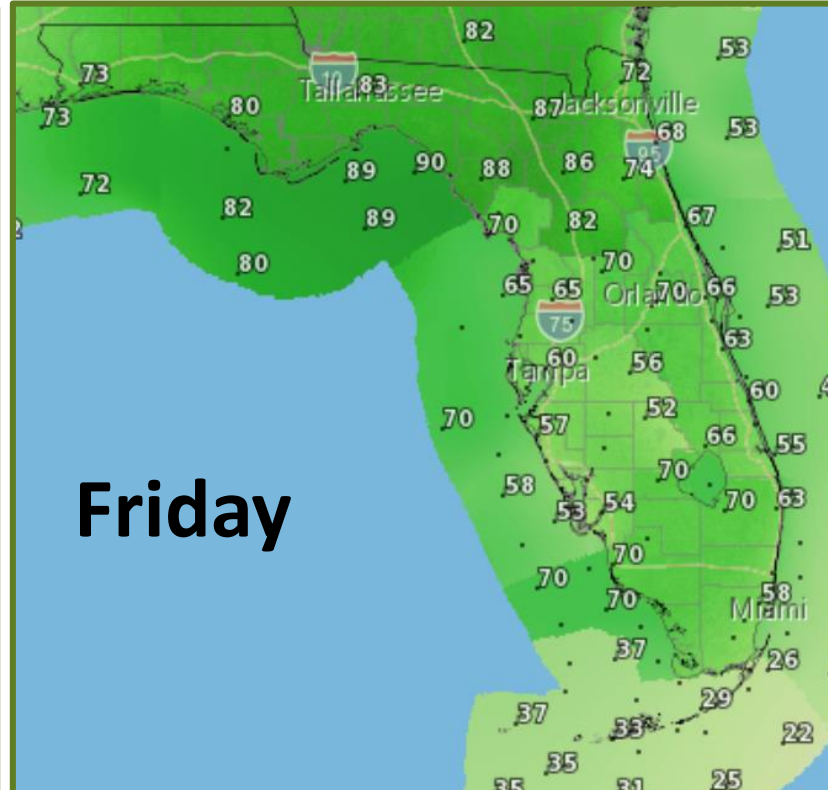


Rain Chances Next 3 Days

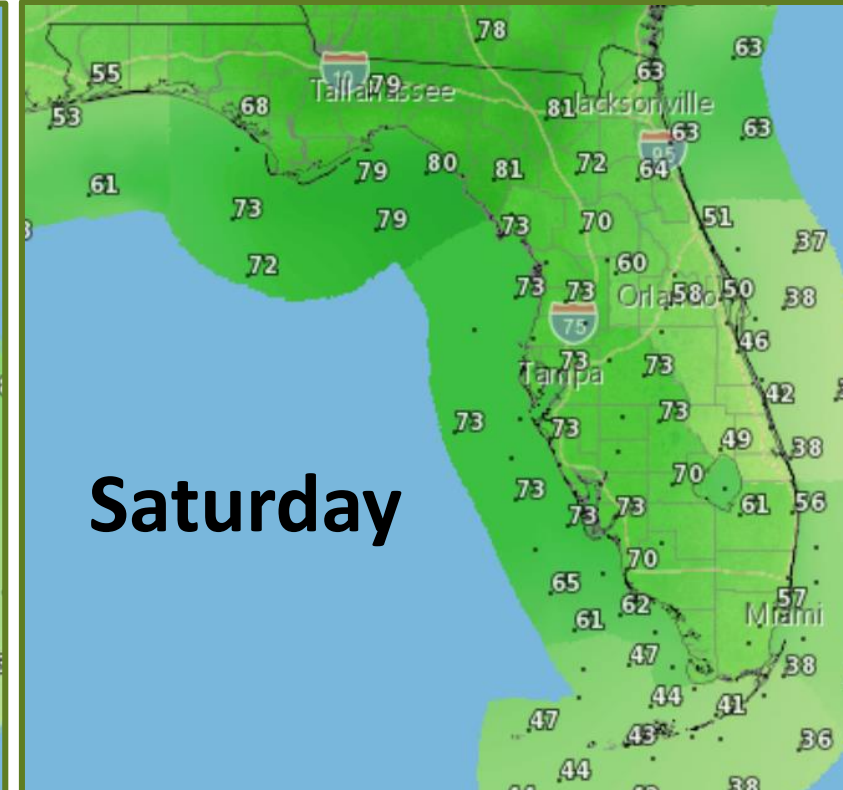
****Unrelated to the Tropics****



Thursday



Friday



Saturday

High rain chances statewide! Multiple rounds of storms throughout the day and continuing into the overnight, especially along the Gulf Coast.



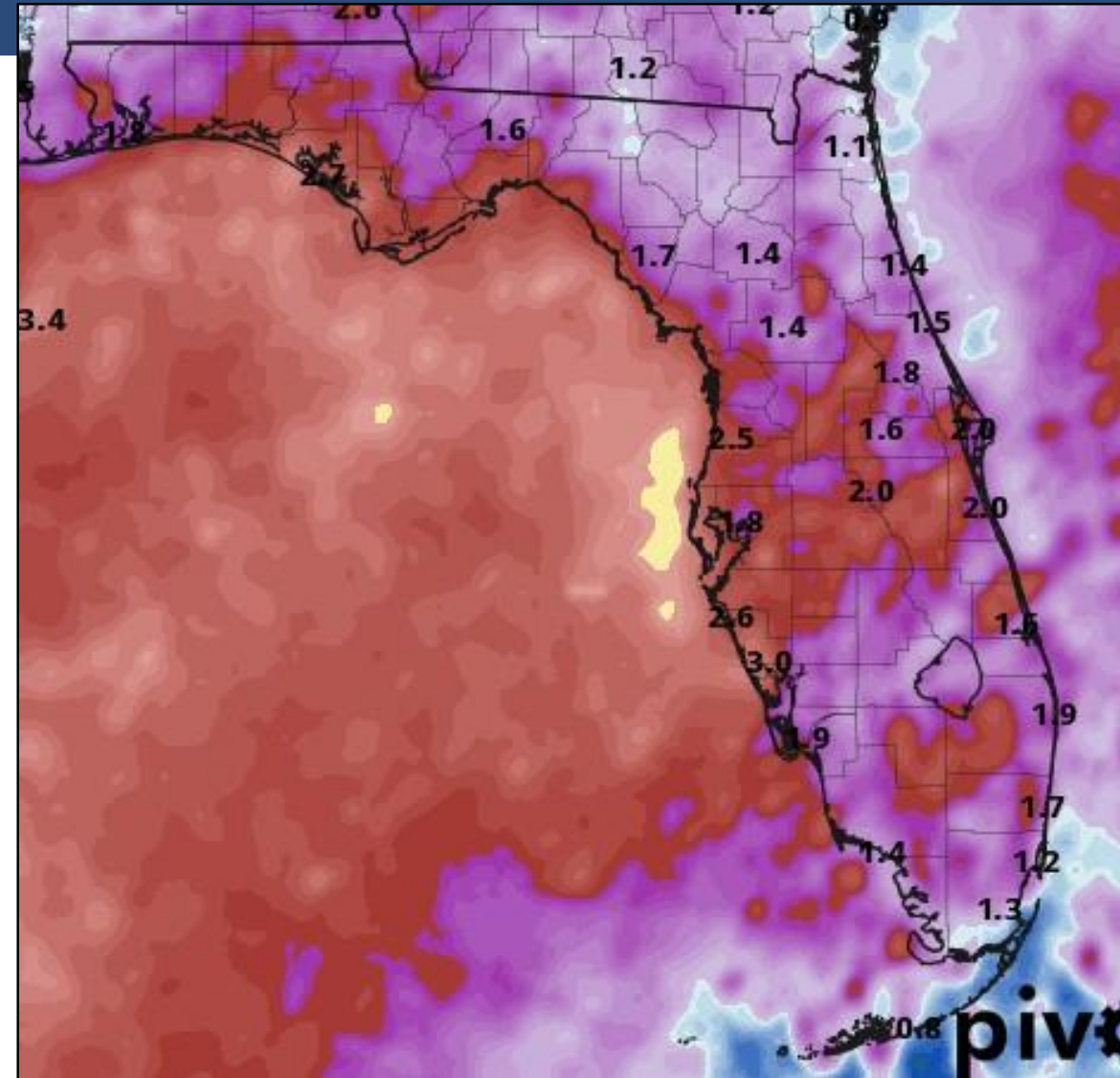
Rainfall Totals Next 5 Days

Unrelated to the Tropics

Isolated flood threat daily

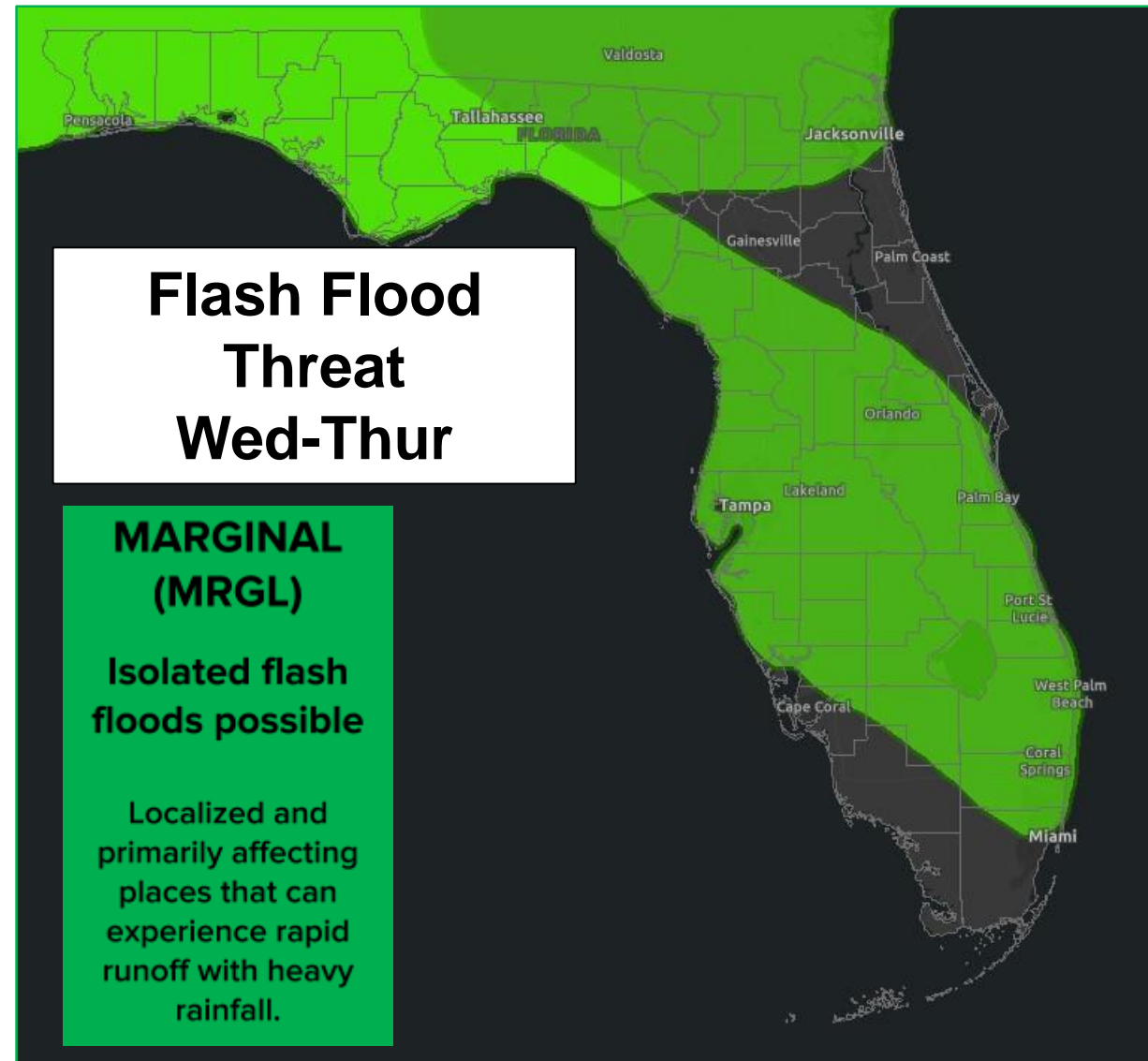
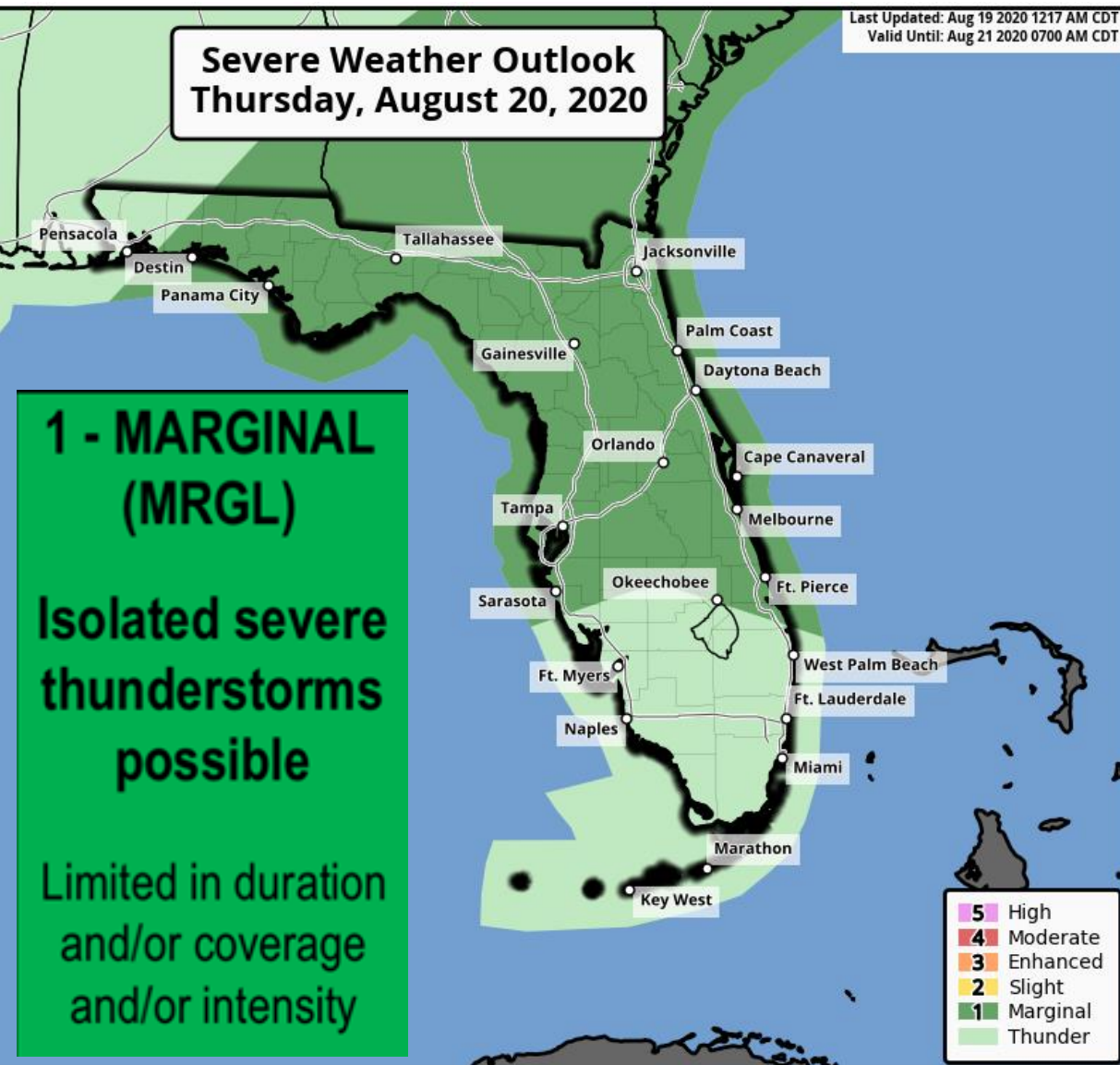
Widespread 2-4"

Locally 6"+





Severe Weather & Flood Threat





Overall Summary

Invest 97L - Tropical Wave in the Eastern Caribbean

- Shower and thunderstorm activity continues with a fast moving tropical wave in the central Caribbean Sea, but it remains disorganized.
- This tropical wave will move west into the northwestern Caribbean later this week and weekend (Friday-Saturday) where the environment will become favorable for development. A tropical depression is likely to form.
- The longer track and intensity is uncertain.
- The National Hurricane Center gives the system a 40% (medium) chance of development over the next 48 hours, but an 80% (high) chance over the next 5 days.

Invest 98L - Tropical Wave in the Central Atlantic

- A tropical wave is located in the Central Atlantic about halfway between the Caribbean Sea and the coast of Africa and is gradually organizing.
- The tropical wave is moving to the west and northwest into a more favorable environment and a tropical depression is expected to develop in the next day or so.
- The system will near the northeastern Caribbean Islands later this week and weekend (Friday-Saturday). The longer term track and intensity is uncertain.
- The National Hurricane Center gives the system a 90% (high) chance of development over the next 48 hours and over the next 5 days.

Tropical Wave near the Coast of Africa

- A tropical wave moving off the coast of Africa may gradually develop later this week. The National Hurricane Center gives the system a near 0% (low) chance of development over the next 48 hours and a 20% (low) chance of development over the next 5 days.

Florida Outlook:

- While both tropical waves do not pose an immediate threat to the state, **both should be monitored this week**. The systems will continue to the west and west-northwest over the next few days.
- The next names on the list are Laura and Marco.
- Unrelated to the tropical systems, a stalled cold front will bring high rain chances to the state this week, with widespread rainfall totals of 2-4" over the next 5 days. A localized flash flood and severe weather threat exists each afternoon.

The next briefing packet will be issued Thursday morning, unless one of the systems develops late this afternoon. For the latest information on the tropics, please visit the National Hurricane Center website at www.hurricanes.gov.



TROPICAL UPDATE



Created by:

Michael Spagnolo, Deputy State Meteorologist

Michael.Spagnolo@em.myflorida.com

Cameron Young, Assistant State Meteorologist

Cameron.Young@em.myflorida.com

State Meteorological Support Unit

Florida Division of Emergency Management

Users wishing to subscribe (approval pending) to this distribution list, register at:

https://public.govdelivery.com/accounts/FLDEM/subscriber/new?topic_id=SERT_Met_Tropics.

Other reports available for subscription are available at:

<https://public.govdelivery.com/accounts/FLDEM/subscriber/new?preferences=true>