



# TROPICAL UPDATE



11:00 AM EDT

Saturday, August 15, 2020

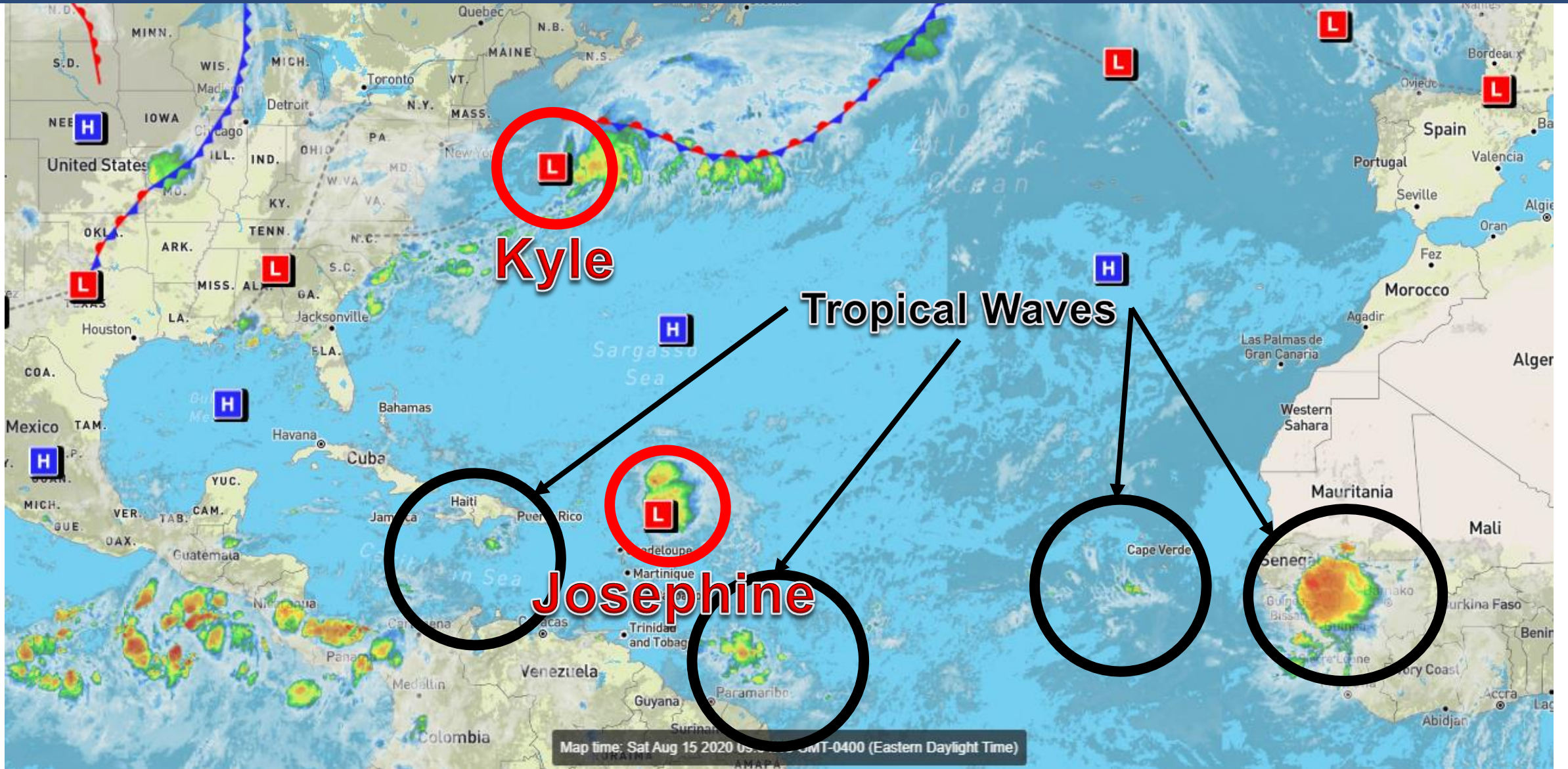
Tropical Storm Josephine & Tropical Storm Kyle

This update is intended for government and emergency response officials, and is provided for informational and situational awareness purposes only. Forecast conditions are subject to change based on a variety of environmental factors. For additional information, or for any life safety concerns with an active weather event please contact your County Emergency Management or Public Safety Office, local National Weather Service forecast office, or visit the National Hurricane Center website at [www.hurricanes.gov](http://www.hurricanes.gov).



# Atlantic Basin Satellite Image

Chance of development: — None — Low — Medium — High





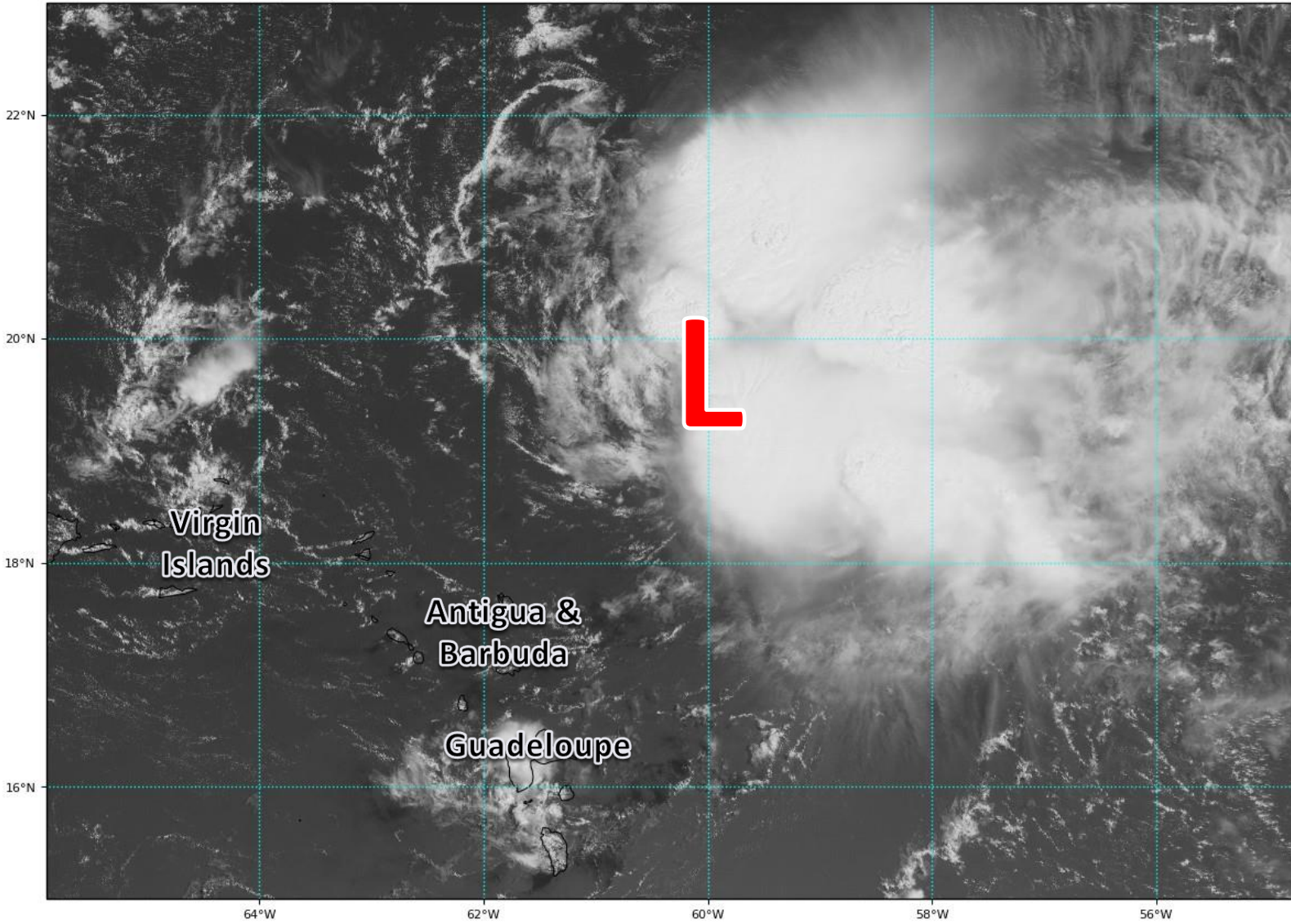


# Satellite Imagery

## Central Atlantic – Tropical Storm Josephine

GOES-16 Channel 2 (visible) Reflectance at 14:45Z Aug 15, 2020

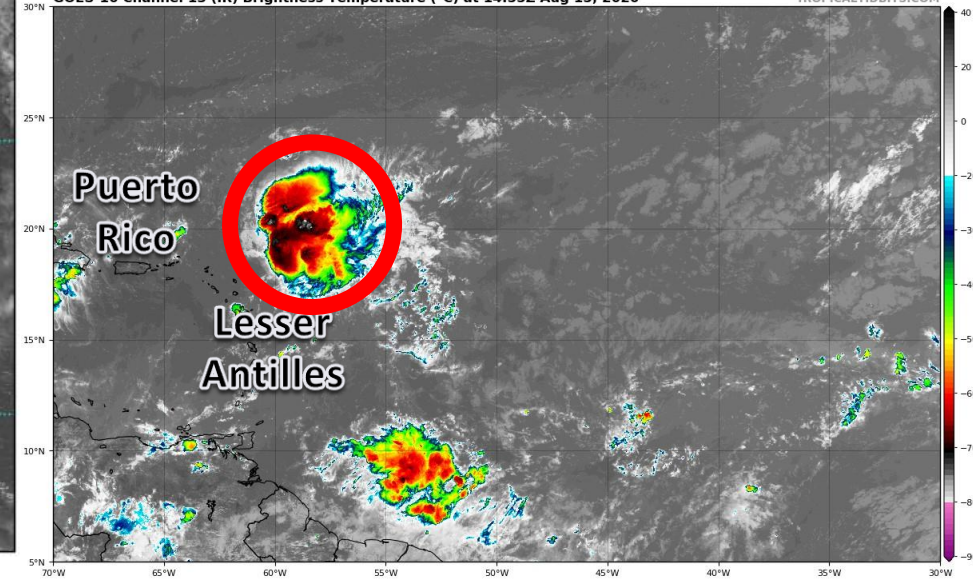
TROPICALTIDBITS.COM



Shear continues to affect Josephine, though now from a different direction. Most of the storms are on the east side of the center. Wind shear is only forecast to increase over Josephine, leading to its demise during the middle part of next week.

GOES-16 Channel 13 (IR) Brightness Temperature (°C) at 14:55Z Aug 15, 2020

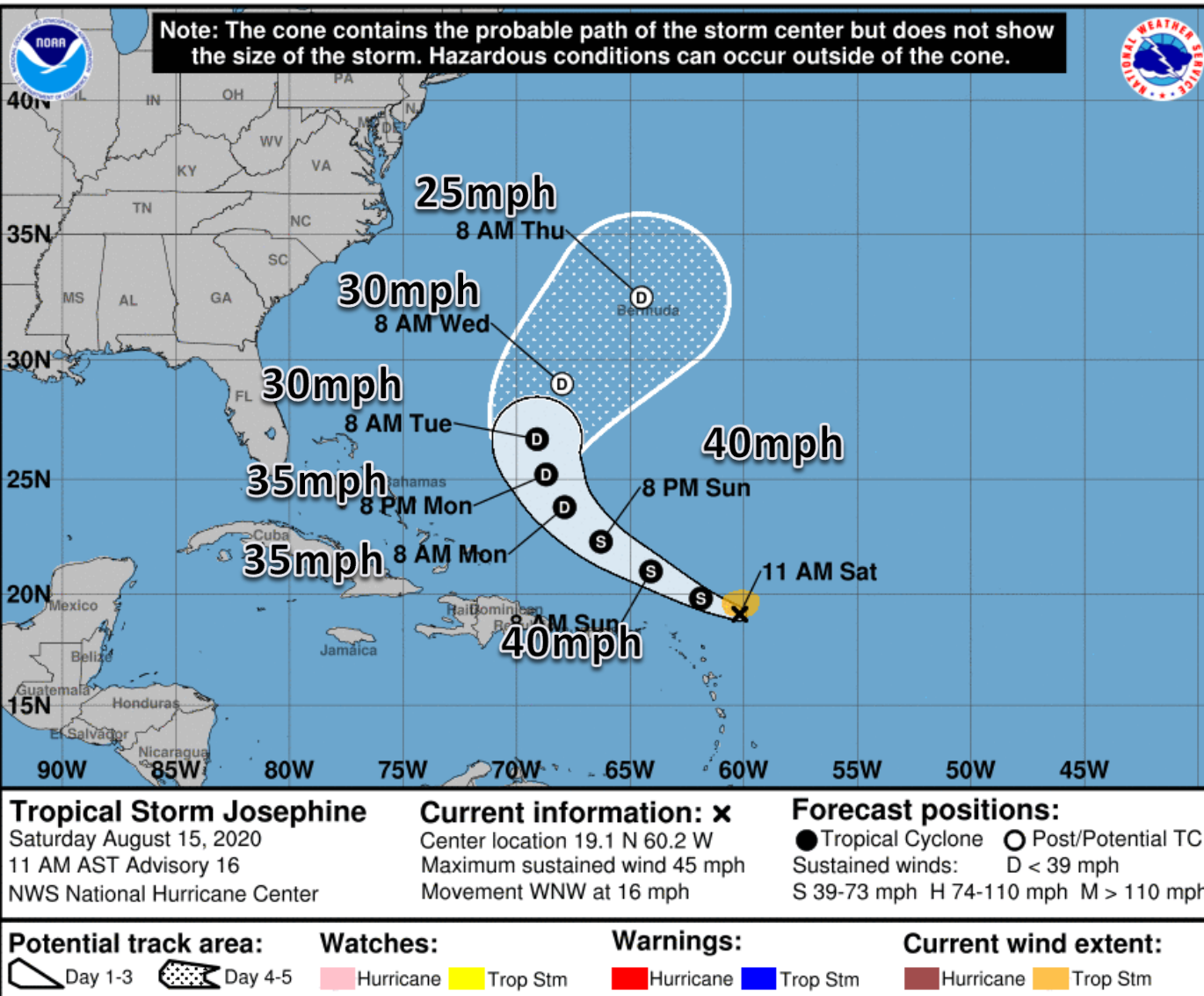
TROPICALTIDBITS.COM





# Official Forecast Track

From the National Hurricane Center – Tropical Storm Josephine



- The center of Tropical Storm Josephine is 200 miles east-northeast of the northern Leeward Islands
- Maximum sustained are near 45 mph, and gradual weakening is forecast after today
- Josephine is moving to the west-northwest at 16 mph. Josephine will turn northward then northeastward next week and head toward Bermuda, and should dissipate mid-week.



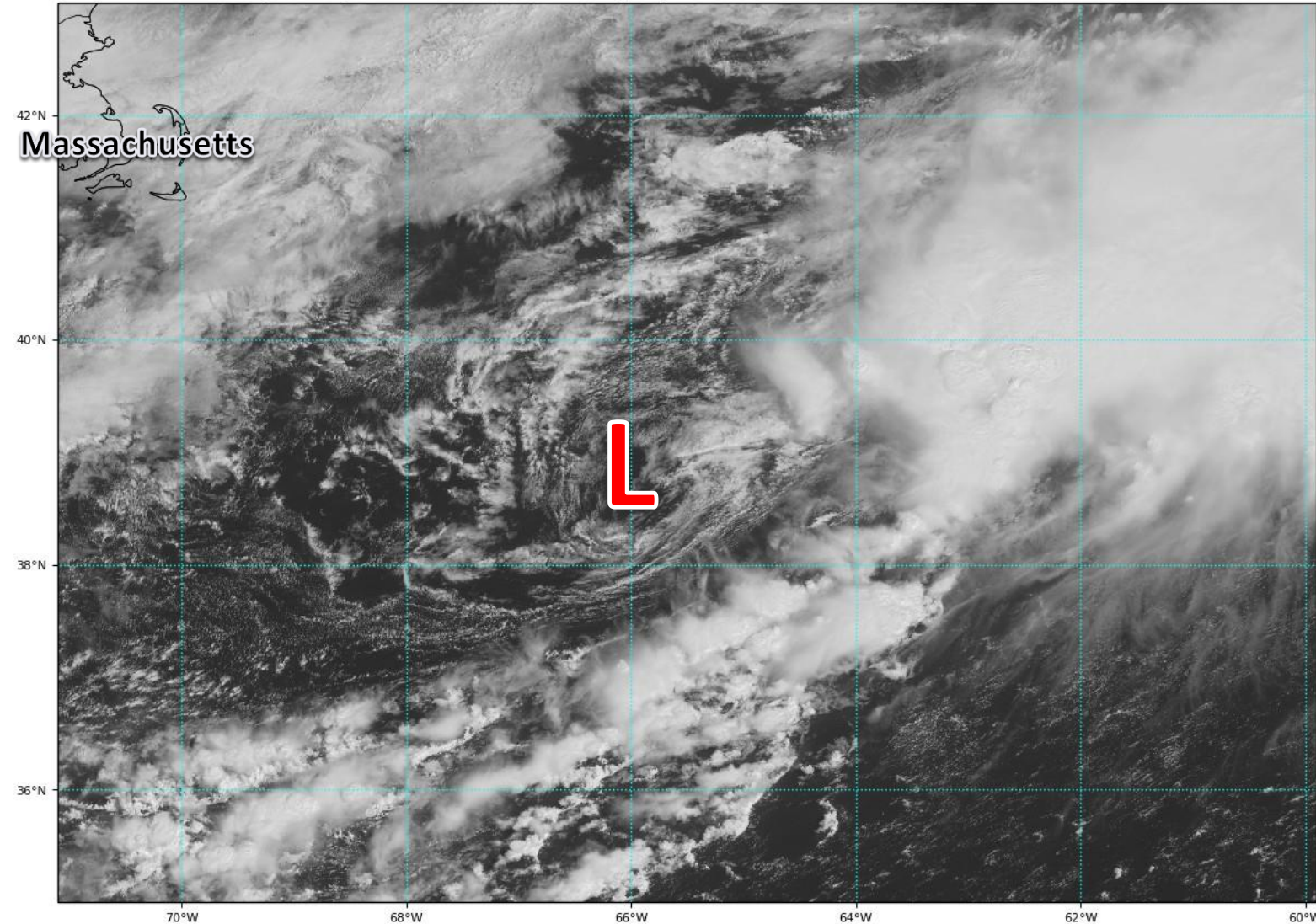


# Satellite Imagery

## Northwestern Atlantic – Tropical Storm Kyle

GOES-16 Channel 2 (visible) Reflectance at 14:52Z Aug 15, 2020

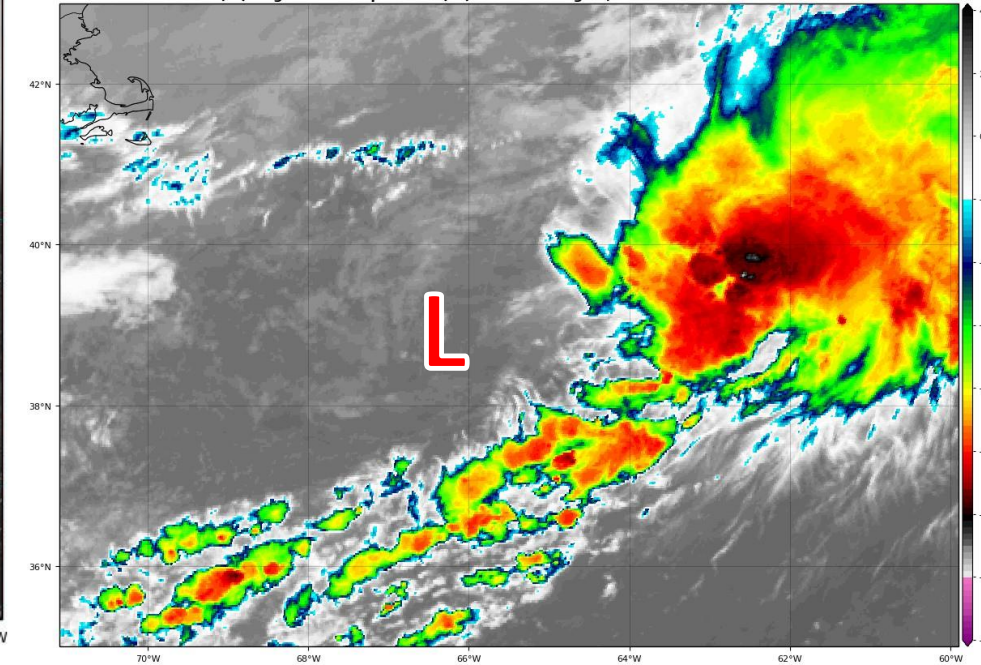
TROPICALTIDBITS.COM



Tropical Storm Kyle formed yesterday off the Mid-Atlantic coast. Shear has taken its toll on the system, elongating the center and displacing the convection well to the east of the center. Only the warm waters of the Gulf Stream are supporting its tropical nature.

GOES-16 Channel 13 (IR) Brightness Temperature (°C) at 14:52Z Aug 15, 2020

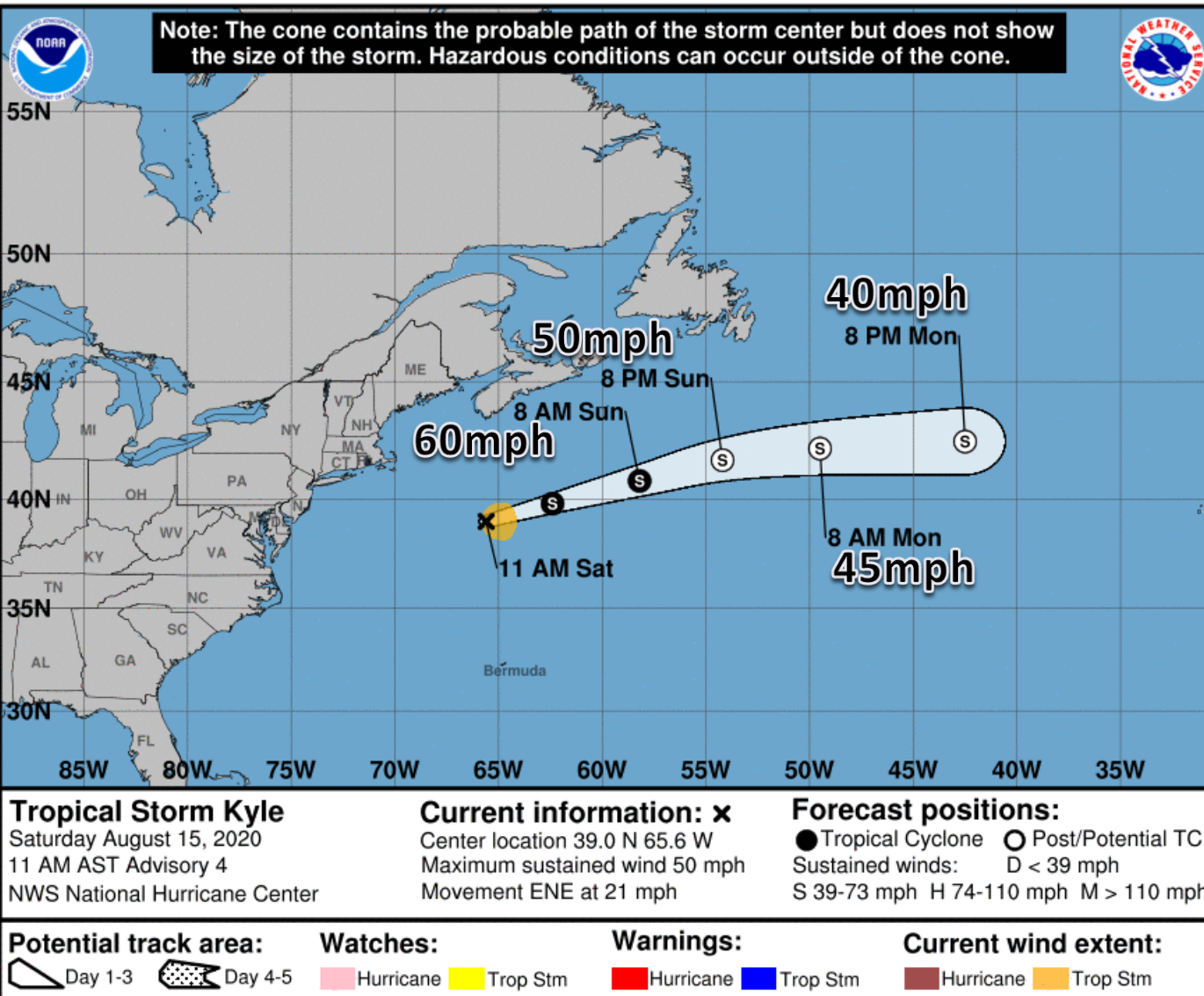
TROPICALTIDBITS.COM





# Official Forecast Track

## From the National Hurricane Center – Tropical Storm Kyle



- The center of Tropical Storm Kyle is 360 miles east-southeast of Providence, Rhode Island
- Maximum sustained are near 50 mph, and some slight strengthening is possible today and tonight before Kyle becomes post-tropical Sunday night.
- Kyle is moving toward the east-northeast at 21 mph, and this motion will continue until Kyle is absorbed by a large low pressure system on Monday





# Overall Summary

## **Tropical Storm Josephine**

- The center of Tropical Storm Josephine is about 200 miles east-northeast of the northern Leeward Islands, moving to the west-northwest at 16 mph.
- Maximum sustained winds are near 45 mph, and gradual weakening is forecast after today.
- Josephine will turn northward then northeastward into the open Atlantic toward Bermuda and become post-tropical by Wednesday.

## **Tropical Storm Kyle**

- The center of Tropical Storm Kyle is about 360 miles east-southeast of Providence, Rhode Island, moving to the east-northeast at 21 mph.
- Maximum sustained winds are near 50 mph, and some additional strengthening is possible today and tonight.
- Kyle will become post-tropical Sunday night as it becomes absorbed by a larger low pressure system.

## **Florida Outlook:**

- Neither Josephine nor Kyle pose a threat to Florida.

The next briefing packet will be issued late Sunday morning. For the latest information on the tropics, please visit the National Hurricane Center website at [www.hurricanes.gov](http://www.hurricanes.gov).



# TROPICAL UPDATE



Created by:

Cameron Young, Assistant State Meteorologist

[Cameron.Young@em.myflorida.com](mailto:Cameron.Young@em.myflorida.com)

State Meteorological Support Unit

Florida Division of Emergency Management

Users wishing to subscribe (approval pending) to this distribution list, register at:

[https://public.govdelivery.com/accounts/FLDEM/subscriber/new?topic\\_id=SERT\\_Met\\_Tropics](https://public.govdelivery.com/accounts/FLDEM/subscriber/new?topic_id=SERT_Met_Tropics).

Other reports available for subscription are available at:

<https://public.govdelivery.com/accounts/FLDEM/subscriber/new?preferences=true>