



TROPICAL UPDATE



11:00 AM EDT

Friday, August 14, 2020

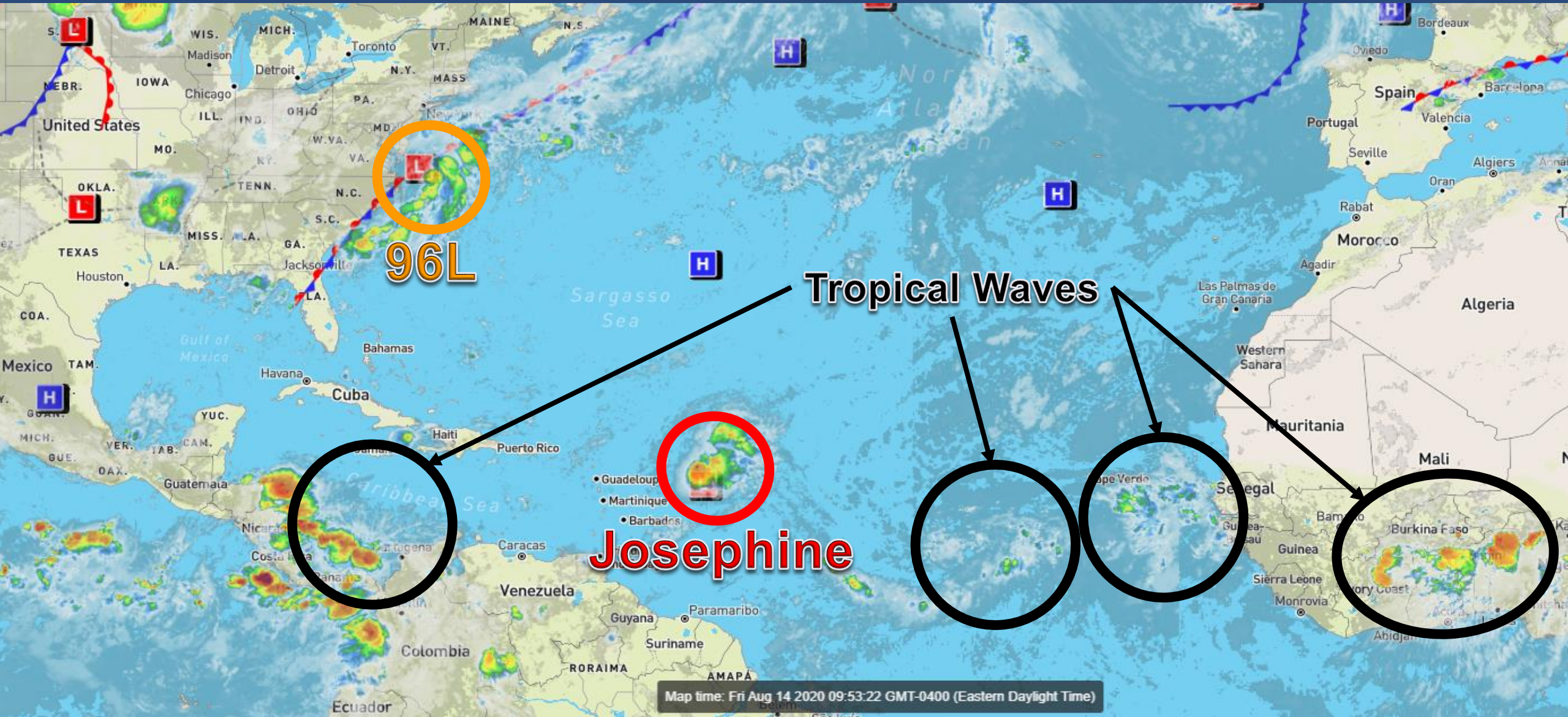
Tropical Storm Josephine & Invest 96L (50%)

This update is intended for government and emergency response officials, and is provided for informational and situational awareness purposes only. Forecast conditions are subject to change based on a variety of environmental factors. For additional information, or for any life safety concerns with an active weather event please contact your County Emergency Management or Public Safety Office, local National Weather Service forecast office, or visit the National Hurricane Center website at www.hurricanes.gov.



Atlantic Basin Satellite Image

Chance of development: — None — Low — Medium — High



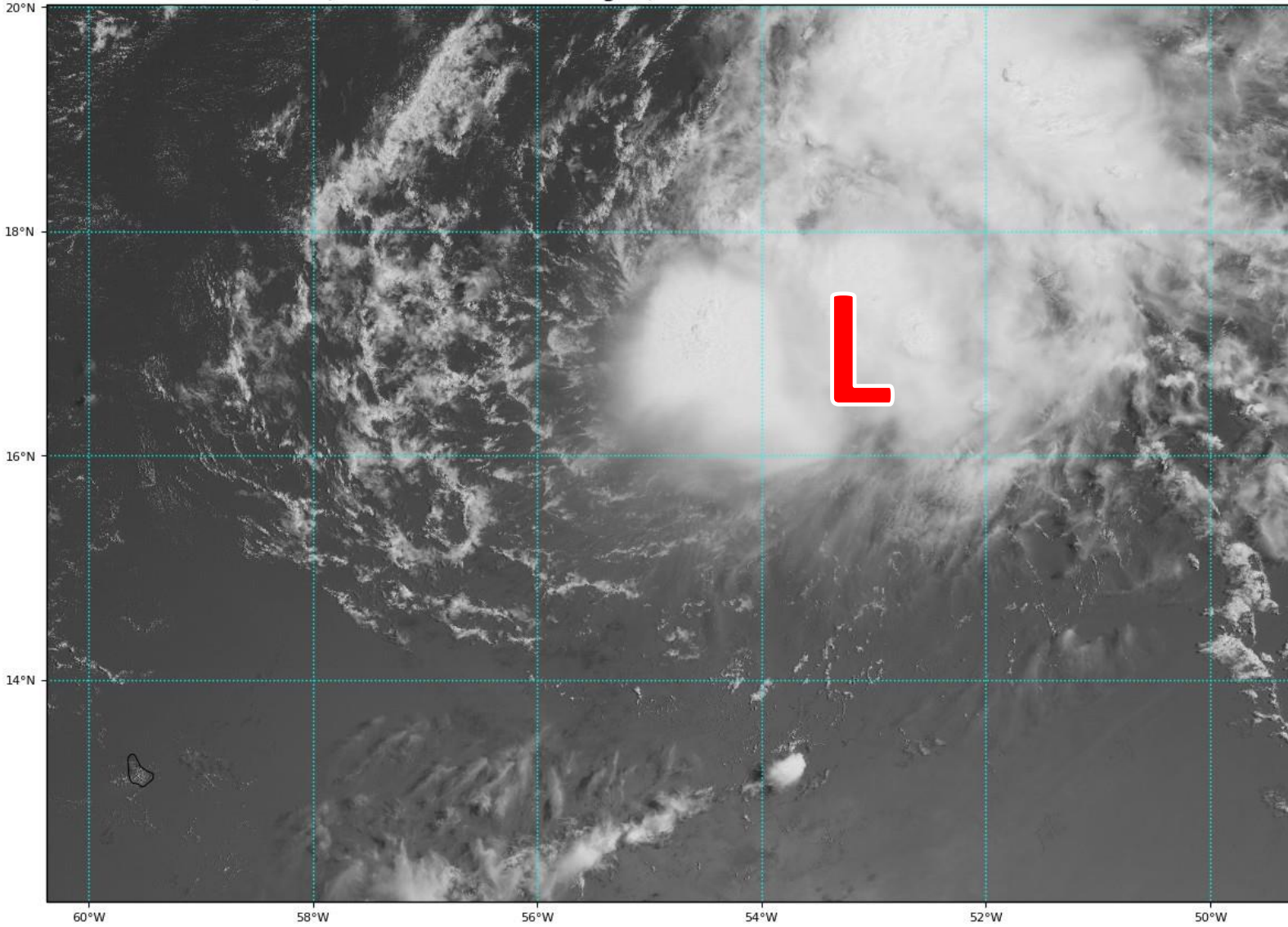


Satellite Imagery

Central Atlantic – Tropical Storm Josephine

GOES-16 Channel 2 (visible) Reflectance at 13:55Z Aug 14, 2020

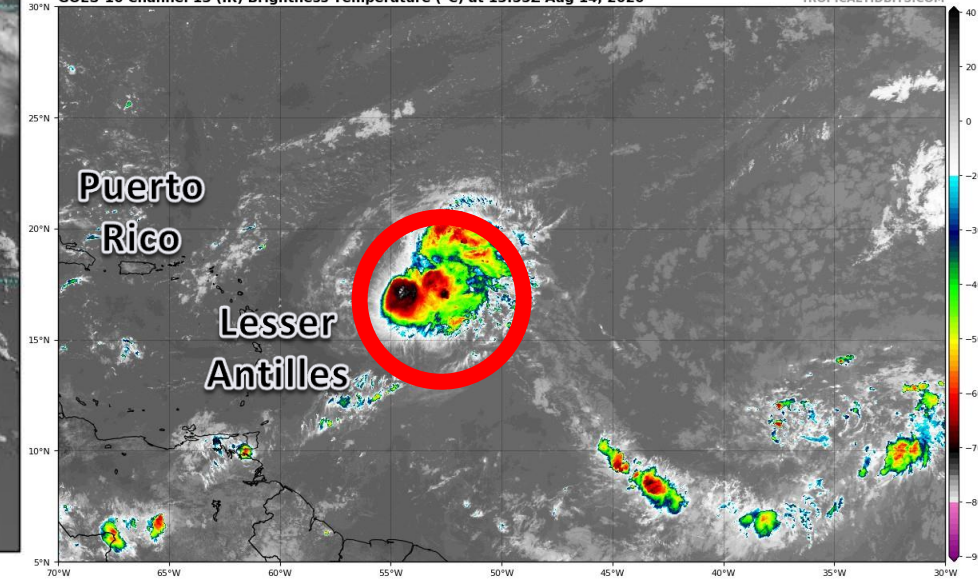
TROPICALTIDBITS.COM



Most of the thunderstorms remain on the north and west sides of the system. Convection has been forming and waning on a daily cycle, which has led to Josephine remaining somewhat disorganized.

GOES-16 Channel 13 (IR) Brightness Temperature (°C) at 13:55Z Aug 14, 2020

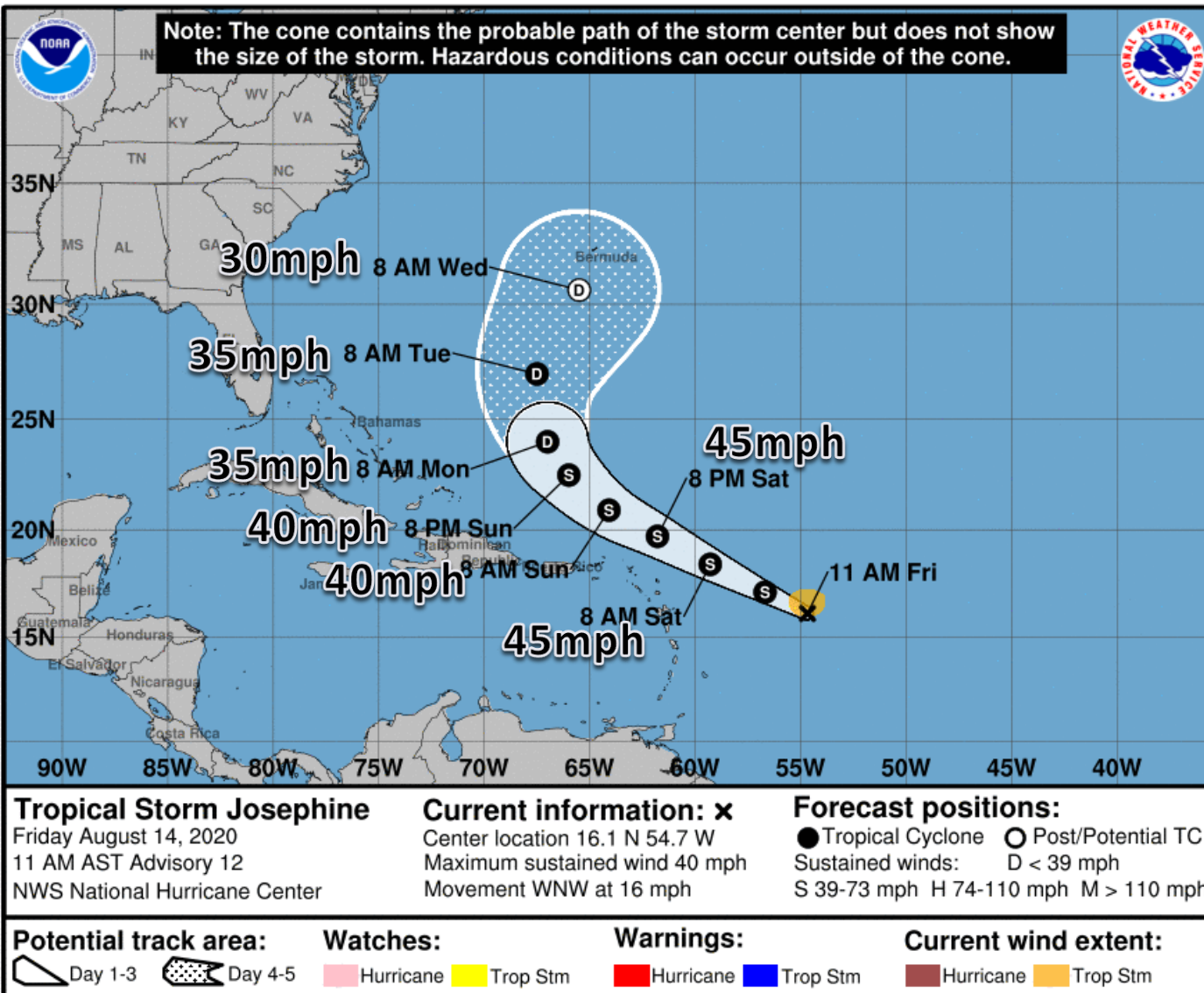
TROPICALTIDBITS.COM





Official Forecast Track

From the National Hurricane Center – Tropical Storm Josephine



- The center of Tropical Storm Josephine is 575 miles east-southeast of the northern Leeward Islands
- Maximum sustained are near 40 mph, and some slight strengthening is possible during the next 24 hours.
- Josephine is moving to the west-northwest at 16 mph. As the system heads northwest this weekend and next week, the environment is forecast to be unfavorable and the system is expected to weaken.
- Josephine will turn northward then northeastward next week and head toward Bermuda, and should dissipate mid-week.

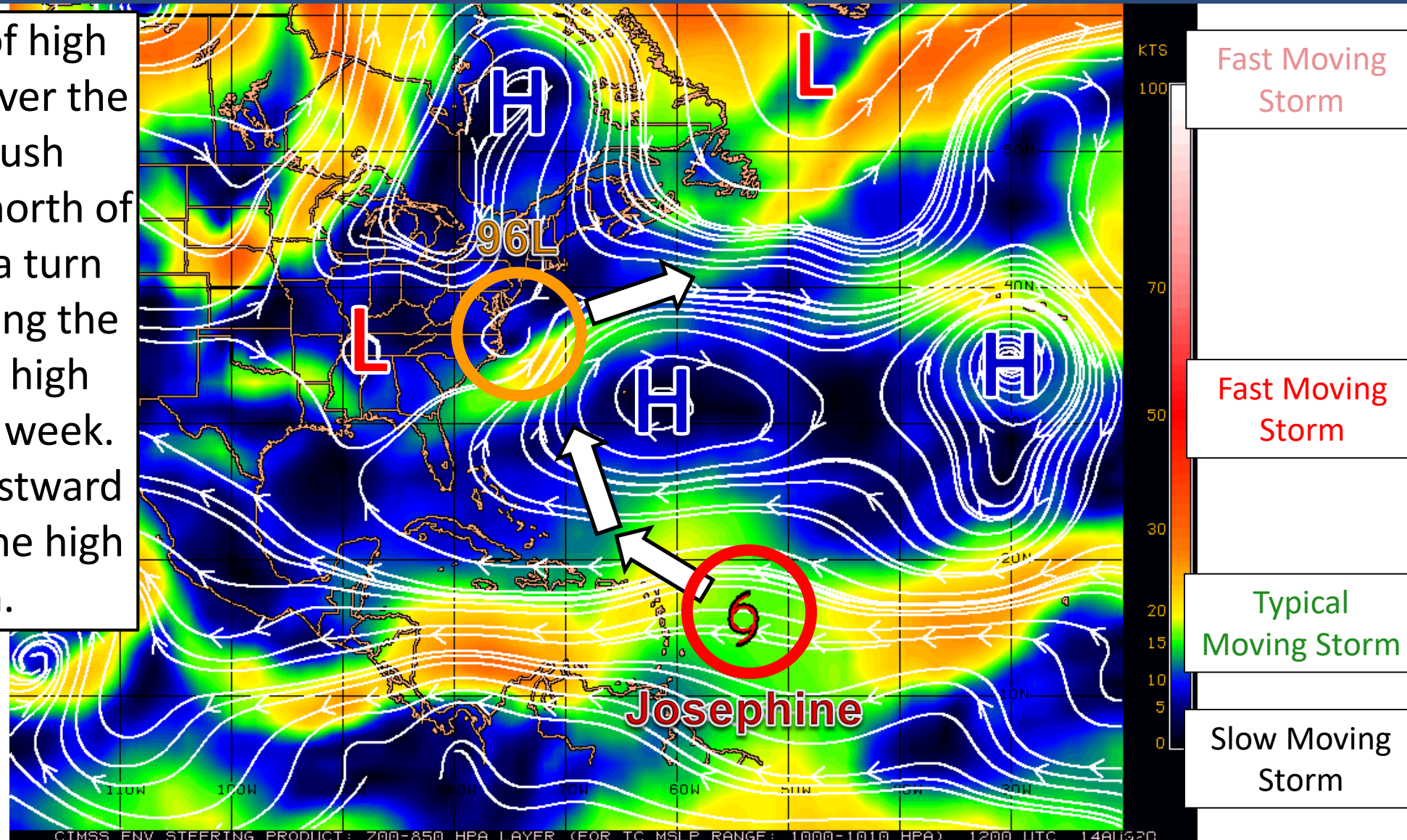


Steering Currents

What is moving the system?

Color denotes the movement speed through the atmosphere and thin white lines denote direction. Tightly clustered white lines represent faster movement as well.

A large, strong area of high pressure is centered over the Atlantic. This will push Josephine northwest north of the Caribbean, with a turn towards the north along the western edge of the high pressure system next week. 96L will be steered eastward on the north side of the high pressure system.



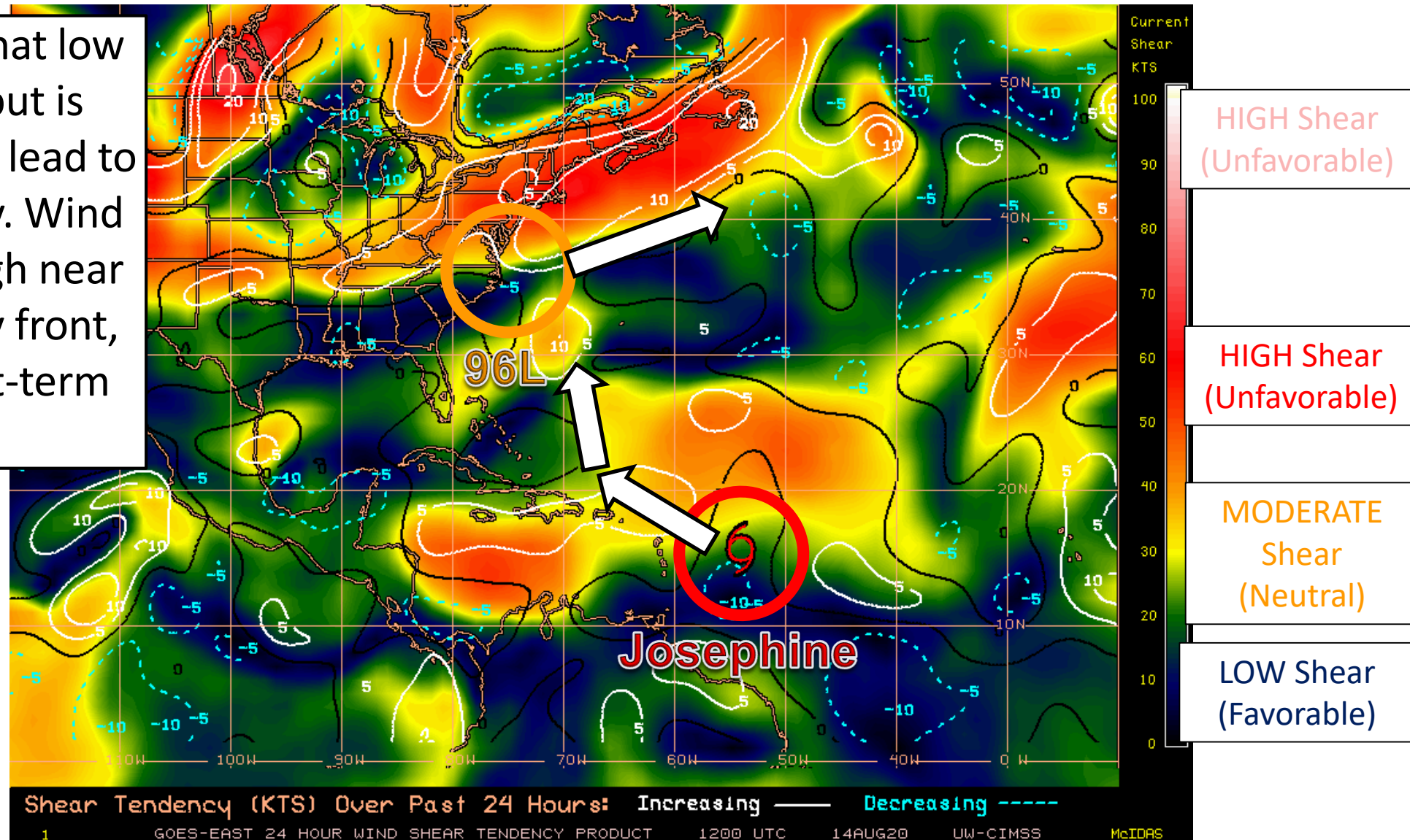


Wind Shear

Is the environment favorable for the system?

Color denotes the amount of wind shear and the lines denote how it have changed over the last 24 hours (dotted lines show decreasing shear and solid lines show increasing).

Wind shear is somewhat low around Josephine, but is increasing. This should lead to weakening after today. Wind shear is somewhat high near 96L due to the nearby front, which may limit short-term development.

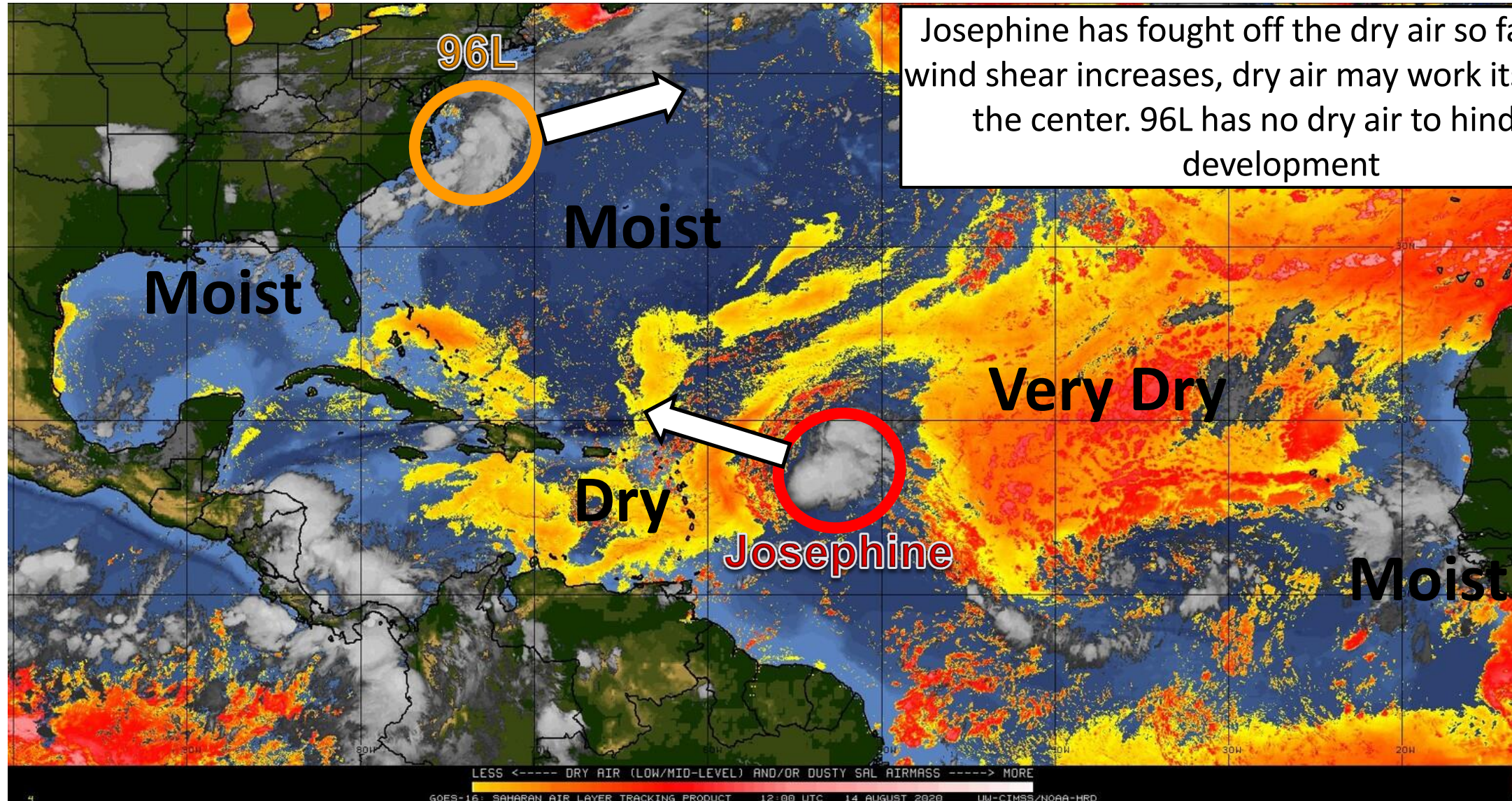




Dry Air & Saharan Dust

Is the environment favorable for the system?

Color denotes concentration of Saharan Dust or dry, stable air.



Josephine has fought off the dry air so far, but as wind shear increases, dry air may work its way into the center. 96L has no dry air to hinder its development



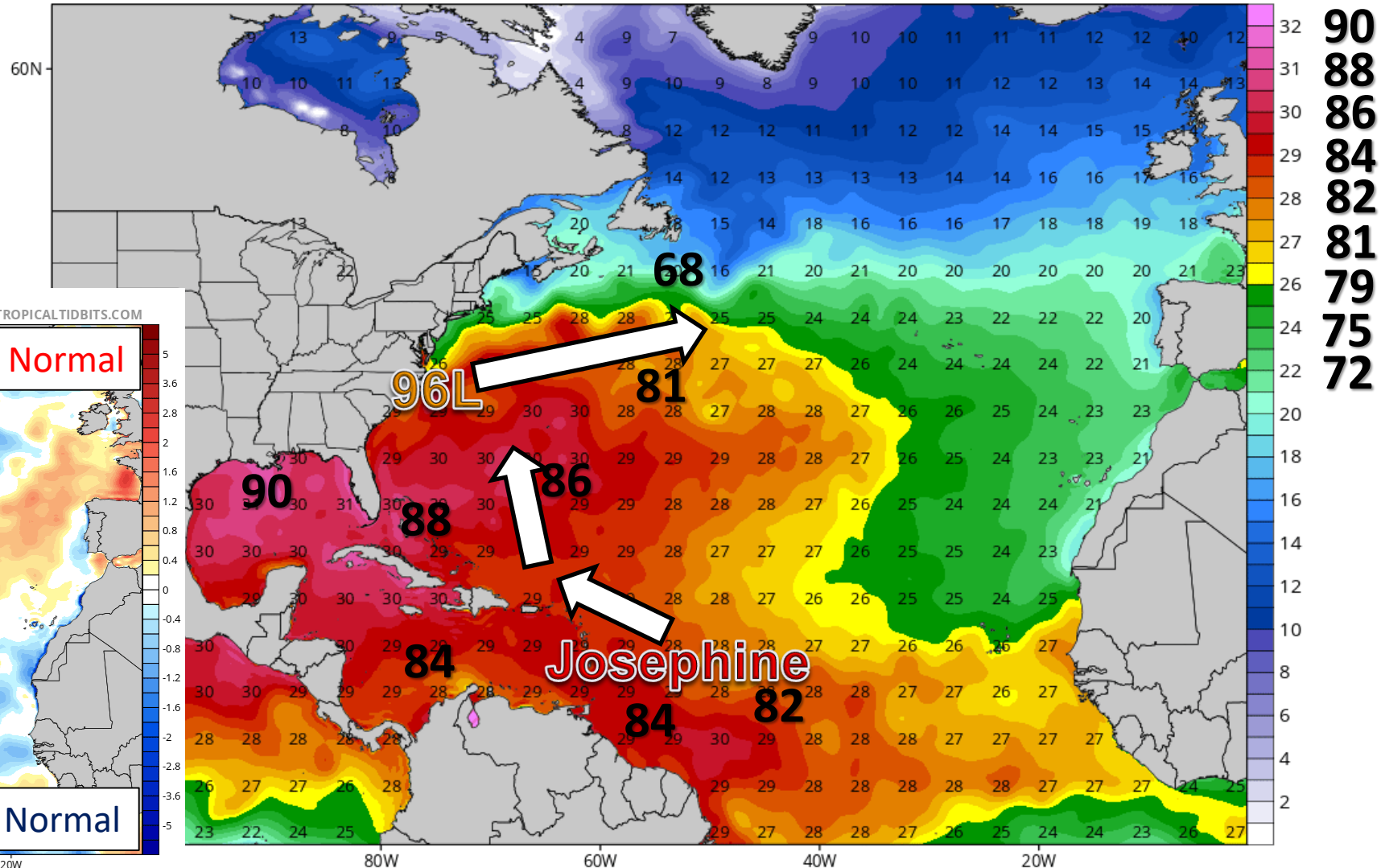
Sea Surface Temperatures & Anomalies

Is the ocean favorable for the system?

Josephine remains over very warm water. If 96L remains over the warm waters of the Gulf Stream, then organization and strengthening are possible.

CDAS Sea Surface Temperature (°C)

Analysis Time: 06z Aug 14 2020



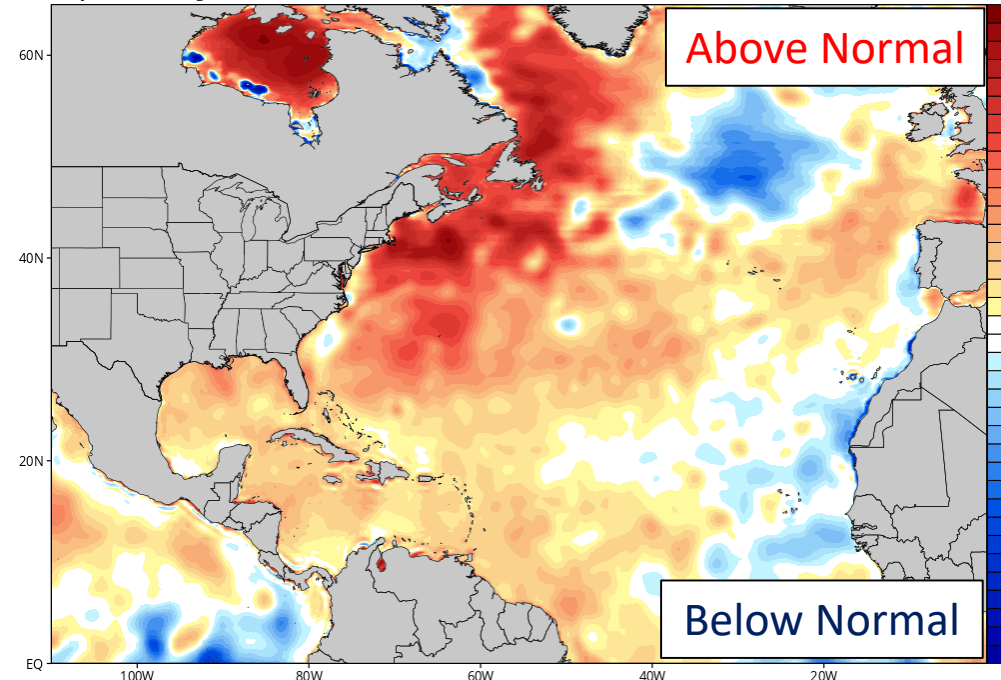
CDAS Sea Surface Temperature Anomaly (°C) (based on CFSR 1981-2010 Climatology)

Analysis Time: 06z Aug 14 2020

TROPICALTIDBITS.COM

Above Normal

Below Normal



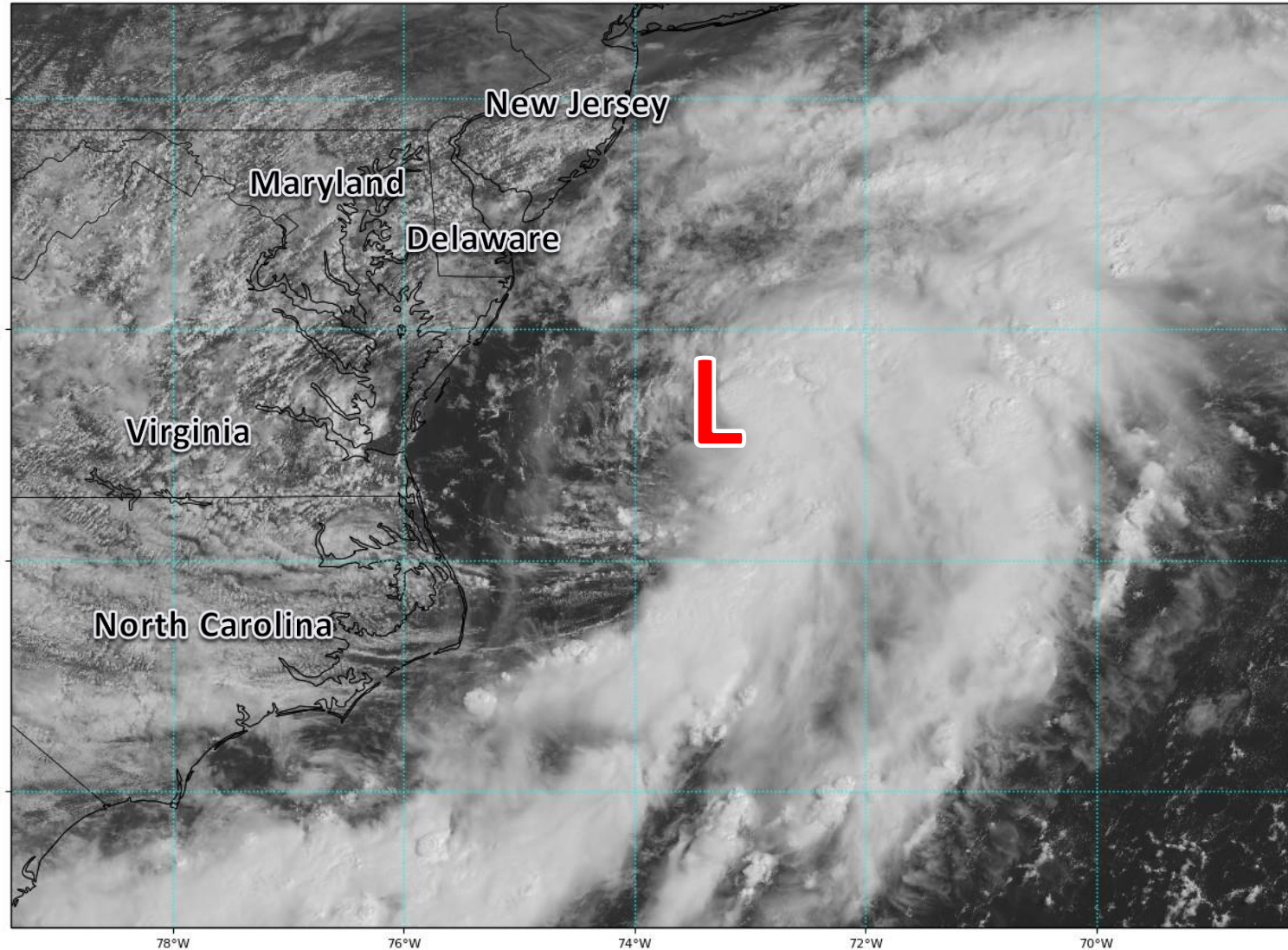


Satellite Imagery

Northwestern Atlantic – Invest 96L (50%)

GOES-16 Channel 2 (visible) Reflectance at 14:22Z Aug 14, 2020

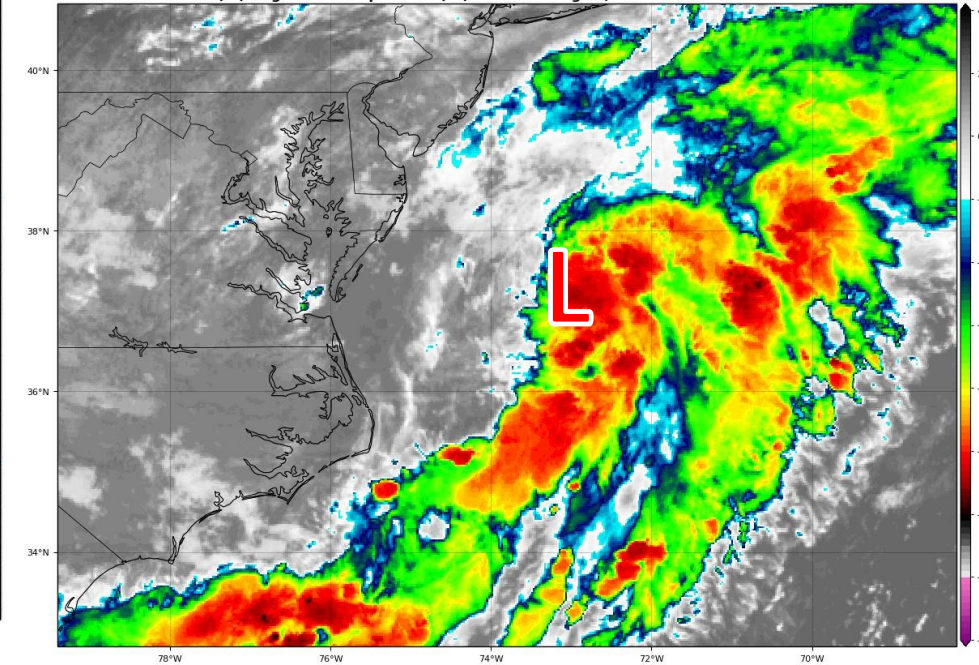
TROPICALTIDBITS.COM



Invest 96L, off the Mid-Atlantic coast, has become much better organized. While it still has some frontal qualities, it has the potential to become a tropical or subtropical cyclone. If it reaches tropical storm intensity, it would be named Kyle.

GOES-16 Channel 13 (IR) Brightness Temperature (°C) at 14:32Z Aug 14, 2020

TROPICALTIDBITS.COM





Tropical Weather Outlook

Possible Area of Development During the Next 5 Days ([LINK](#))



Five-Day Graphical Tropical Weather Outlook

National Hurricane Center Miami, Florida



www.hurricanes.gov

Disturbance 1

1
(50%)

8:00 am EDT
Fri Aug 14 2020

100W 90W 80W 70W 60W 50W 40W 30W 20W

Current Disturbances and Five-Day Cyclone Formation Chance:
Tropical or Sub-Tropical Cyclone: ○ Depression ⚡ Storm 🌀 Hurricane
⊗ Post-Tropical Cyclone or Remnants

✖ < 40% ✖ 40-60% ✖ > 60%

Shower activity has increased in association with a low pressure area located about 100 miles northeast of Cape Hatteras, North Carolina. Some additional development is possible during the next couple of days, and a tropical or subtropical depression could form during that time as the system moves east-northeastward well to the southeast of New England and to the south of the Canadian Maritime provinces.

If this system reaches tropical storm intensity, the next name on the list is Kyle.

This system poses no threat to Florida.

***Formation chance through 48 hrs...medium...40%**

***Formation chance through 5 days...medium...50%**



Overall Summary

Tropical Storm Josephine

- The center of Tropical Storm Josephine is about 575 miles east-southeast of the northern Leeward Islands, moving to the west-northwest at 16 mph.
- Maximum sustained winds are near 40 mph, and some strengthening is possible during the next 24 hours.
- As the system heads northwest later this week north of Puerto Rico, wind shear will increase, causing Josephine to weaken.
- Josephine will turn northward then northeastward into the Atlantic toward Bermuda.

Invest 96L (Mid-Atlantic Coast)

- An area of low pressure east of North Carolina and Virginia has become better organized this morning.
- Some tropical or subtropical development is possible as it moves over the warm waters of the Gulf Stream.
- This system has a 40% chance of formation during the next 48 hours and a 50% chance during the next 5 days. The next name on the list is Kyle.

Florida Outlook:

- Neither Josephine nor 96L pose a threat to Florida.

The next briefing packet will be issued late Saturday morning. For the latest information on the tropics, please visit the National Hurricane Center website at www.hurricanes.gov.



TROPICAL UPDATE



Created by:

Cameron Young, Assistant State Meteorologist

Cameron.Young@em.myflorida.com

State Meteorological Support Unit

Florida Division of Emergency Management

Users wishing to subscribe (approval pending) to this distribution list, register at:

https://public.govdelivery.com/accounts/FLDEM/subscriber/new?topic_id=SERT_Met_Tropics.

Other reports available for subscription are available at:

<https://public.govdelivery.com/accounts/FLDEM/subscriber/new?preferences=true>