



TROPICAL UPDATE



11:00 AM EDT

Thursday, August 13, 2020

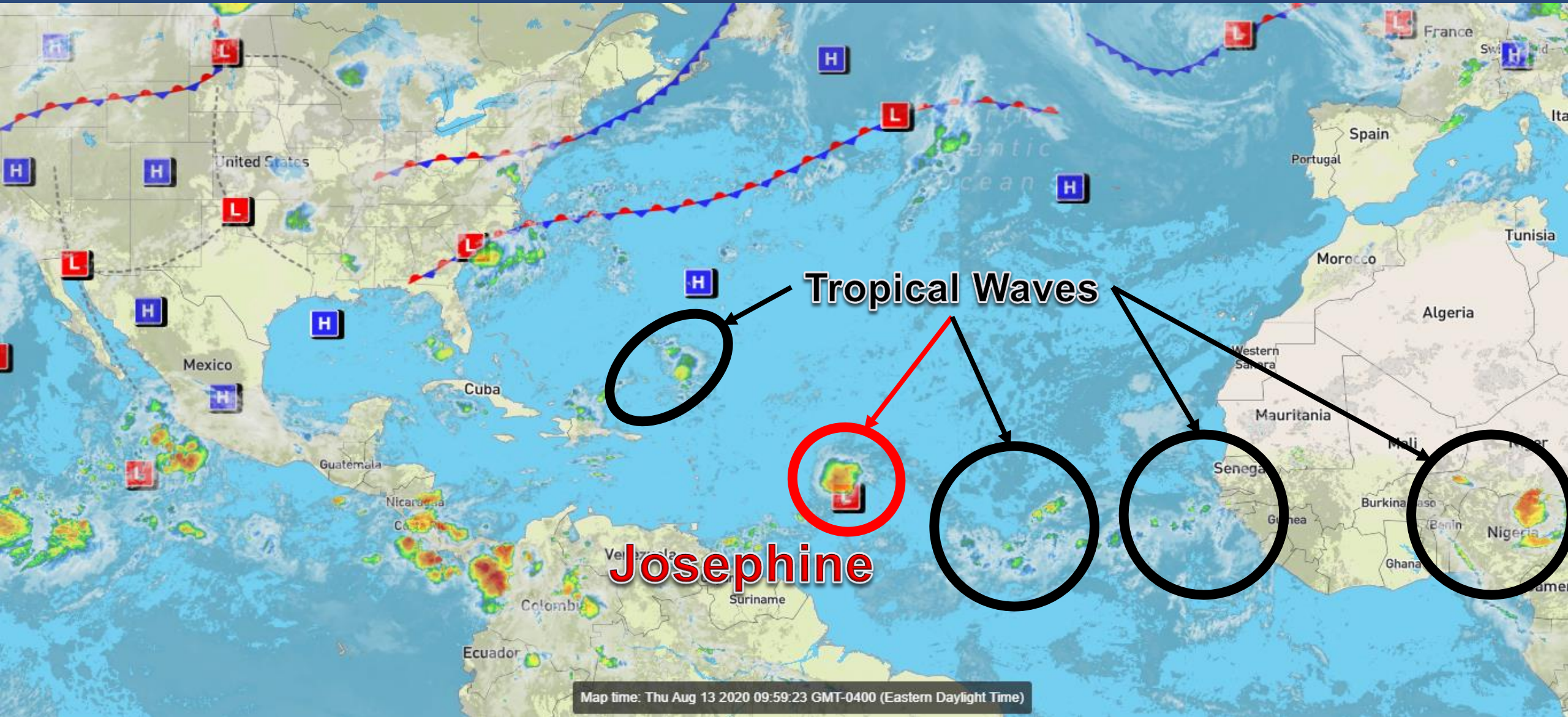
Tropical Storm Josephine

This update is intended for government and emergency response officials, and is provided for informational and situational awareness purposes only. Forecast conditions are subject to change based on a variety of environmental factors. For additional information, or for any life safety concerns with an active weather event please contact your County Emergency Management or Public Safety Office, local National Weather Service forecast office, or visit the National Hurricane Center website at www.hurricanes.gov.



Atlantic Basin Satellite Image

Chance of development: — None — Low — Medium — High



Map time: Thu Aug 13 2020 09:59:23 GMT-0400 (Eastern Daylight Time)

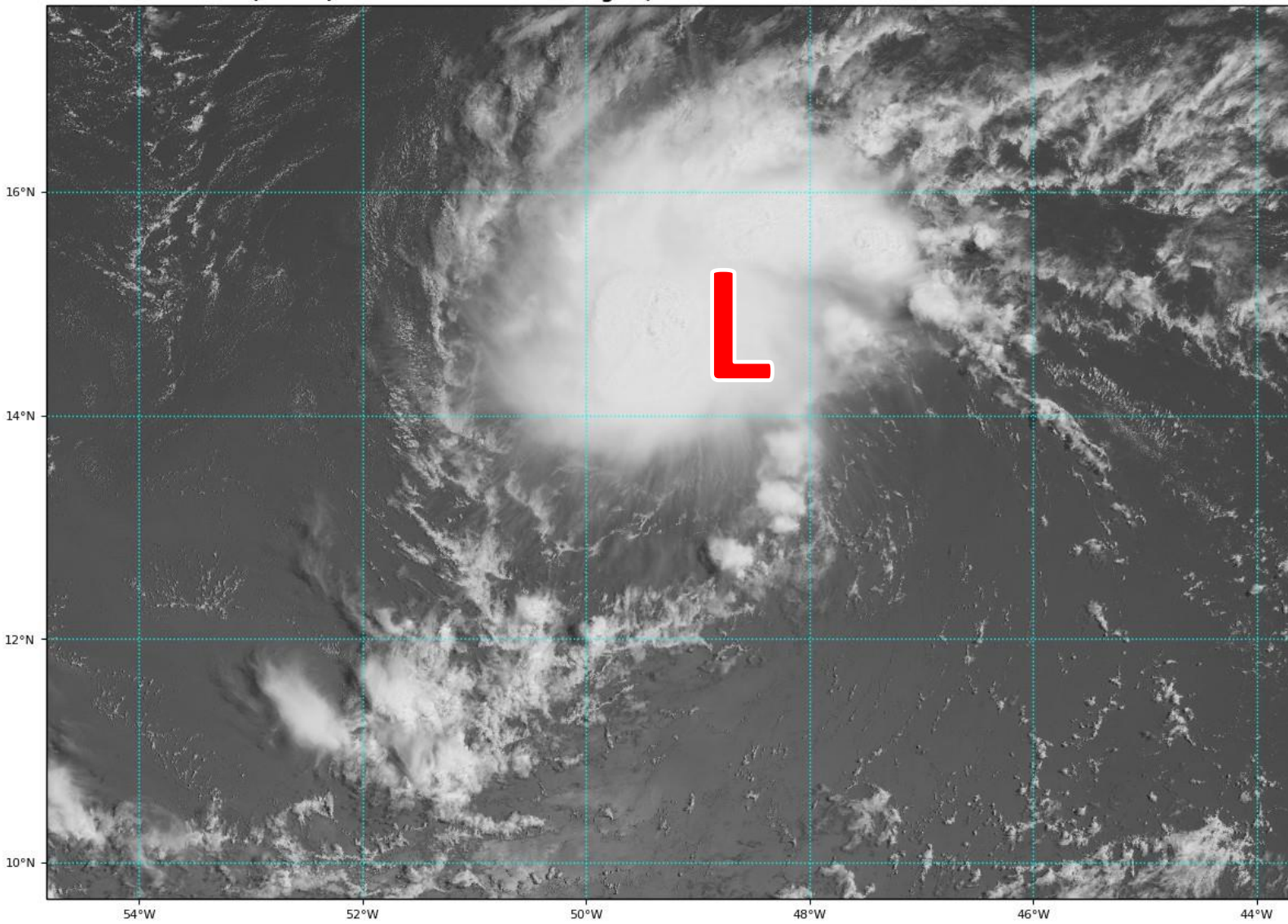


Satellite Imagery

Central Atlantic – Tropical Storm Josephine

GOES-16 Channel 2 (visible) Reflectance at 13:45Z Aug 13, 2020

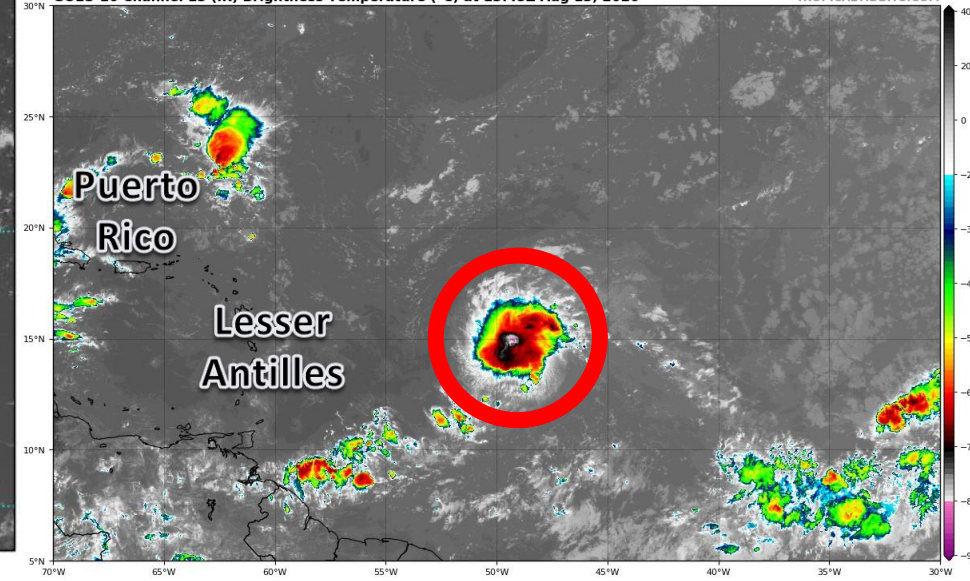
TROPICALTIDBITS.COM



Most of the thunderstorms remain on the north and west sides of the system, but it has become better organized so far this morning.

GOES-16 Channel 13 (IR) Brightness Temperature (°C) at 13:45Z Aug 13, 2020

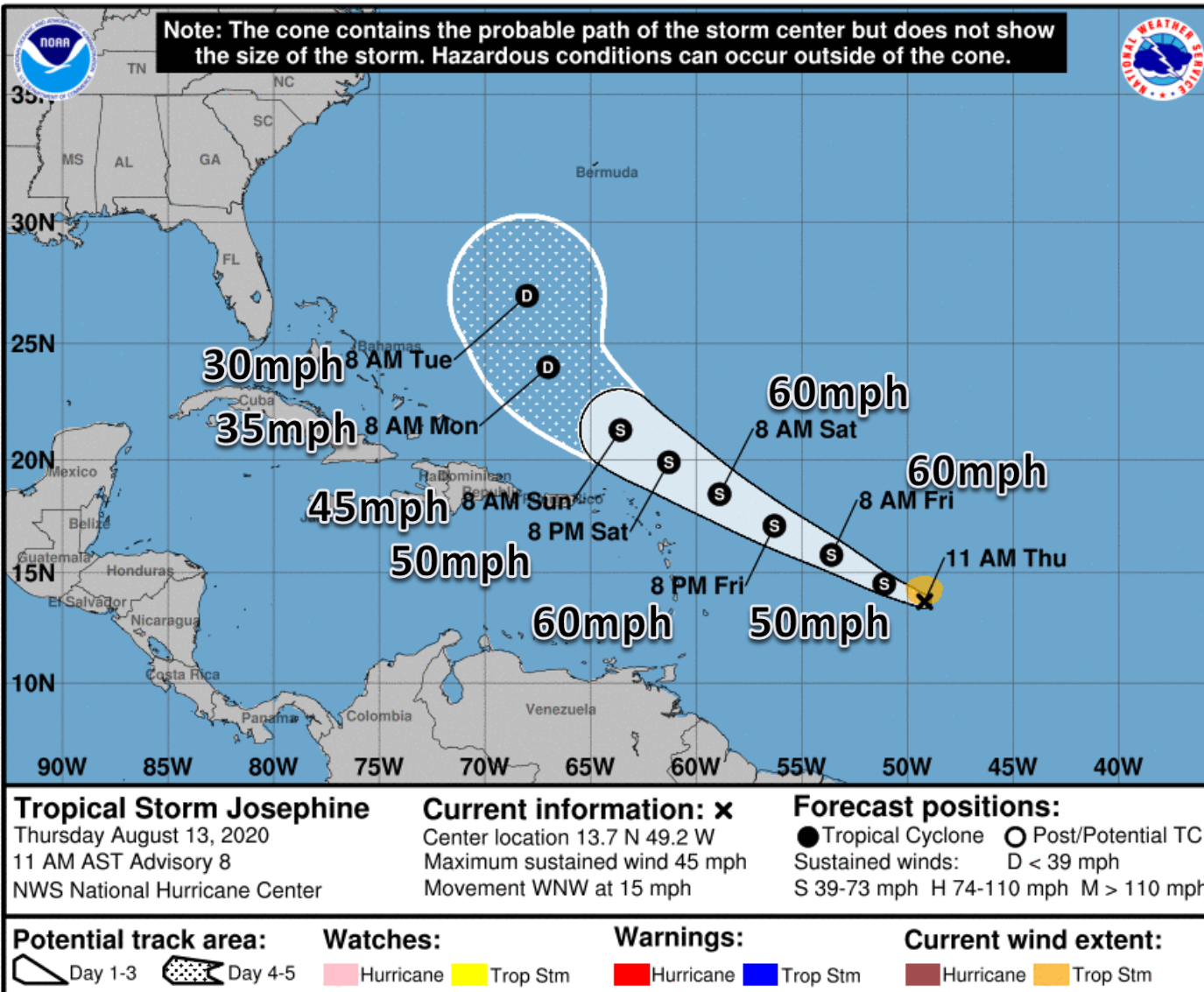
TROPICALTIDBITS.COM





Official Forecast Track

From the National Hurricane Center – Tropical Storm Josephine

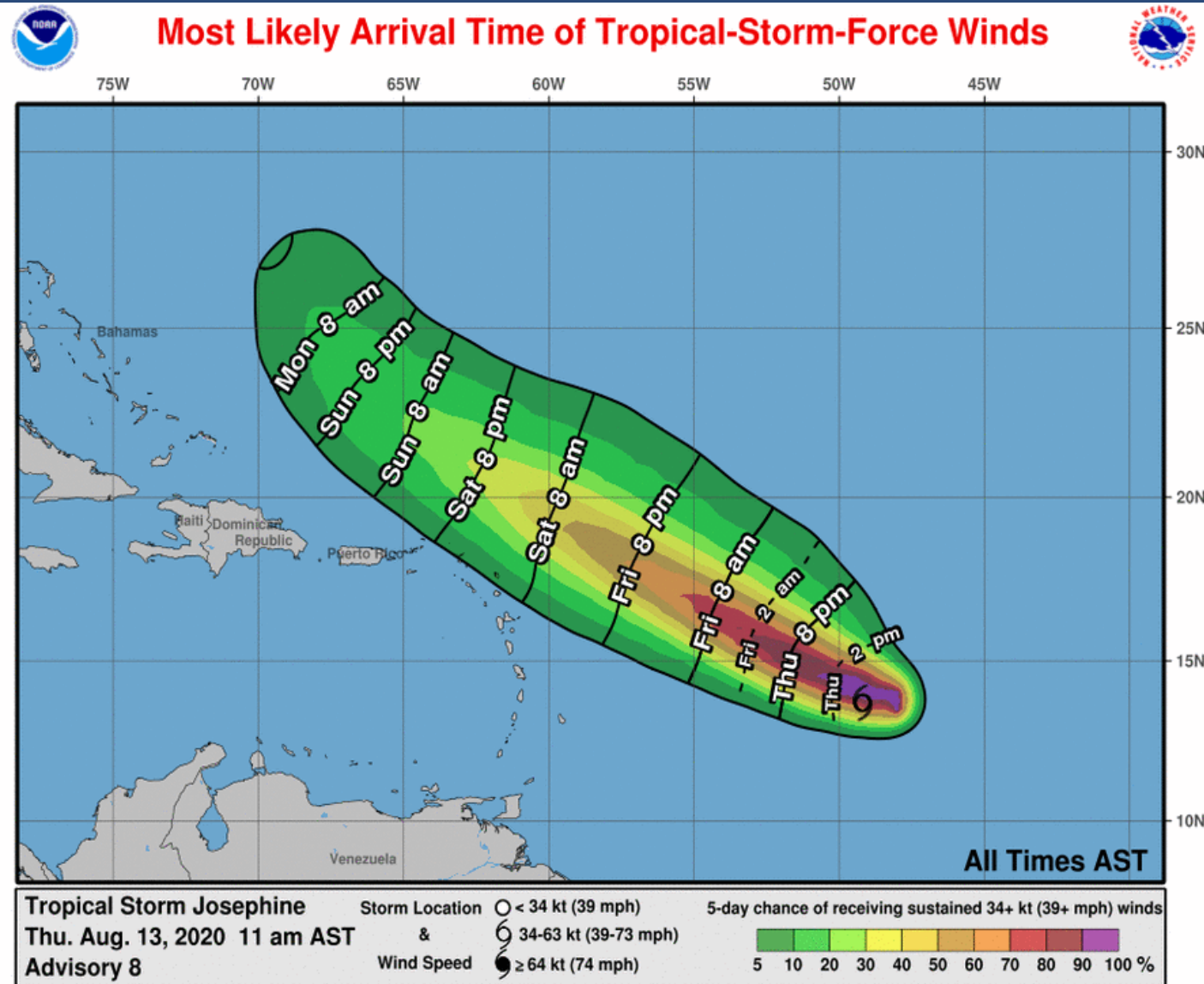


- The center of Tropical Storm Josephine is about 1,300 miles east of the Lesser Antilles/Caribbean Sea
- Maximum sustained winds have increased to 45 mph, and additional strengthening is possible in the next 24-36 hours.
- Josephine is moving to the west-northwest at 15 mph. As the system heads northwest this weekend and next week, the environment is forecast to be unfavorable and the system is expected to weaken.
- This system poses no threat to Florida at this time (at least through early next week), but should continue to be monitored.



Time of Arrival & Wind Speed Probabilities

MOST LIKELY Time of Arrival of Tropical Storm Force Winds (>39 mph)



The system will be near or north of the northeastern Caribbean, including Puerto Rico and the U.S. Virgin Islands, Saturday night.

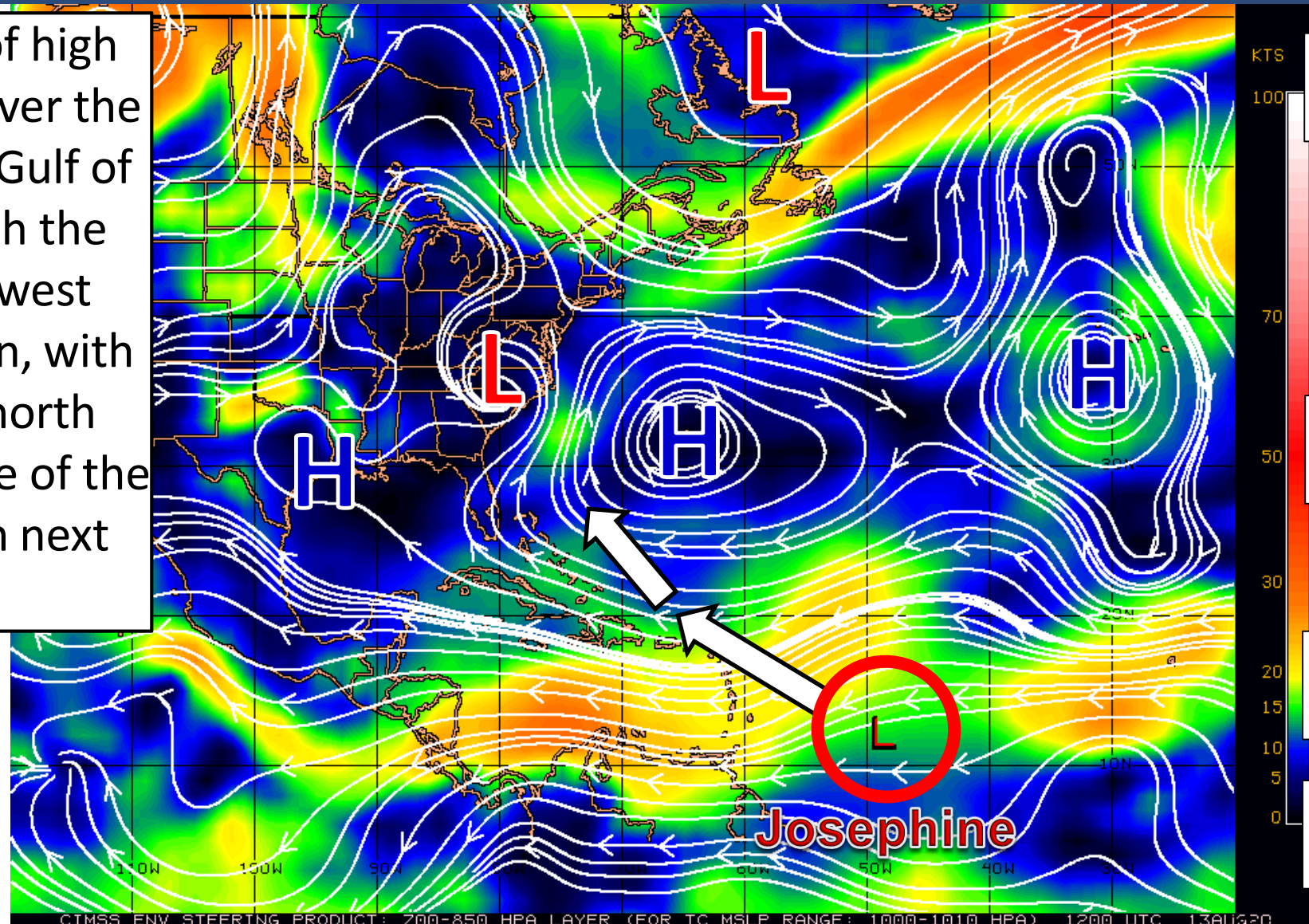


Steering Currents

What is moving the system?

Color denotes the movement speed through the atmosphere and thin white lines denote direction. Tightly clustered white lines represent faster movement as well.

A large, strong area of high pressure is centered over the Atlantic and over the Gulf of Mexico. This will push the tropical wave northwest towards the Caribbean, with a turn towards the north along the western edge of the high pressure system next week



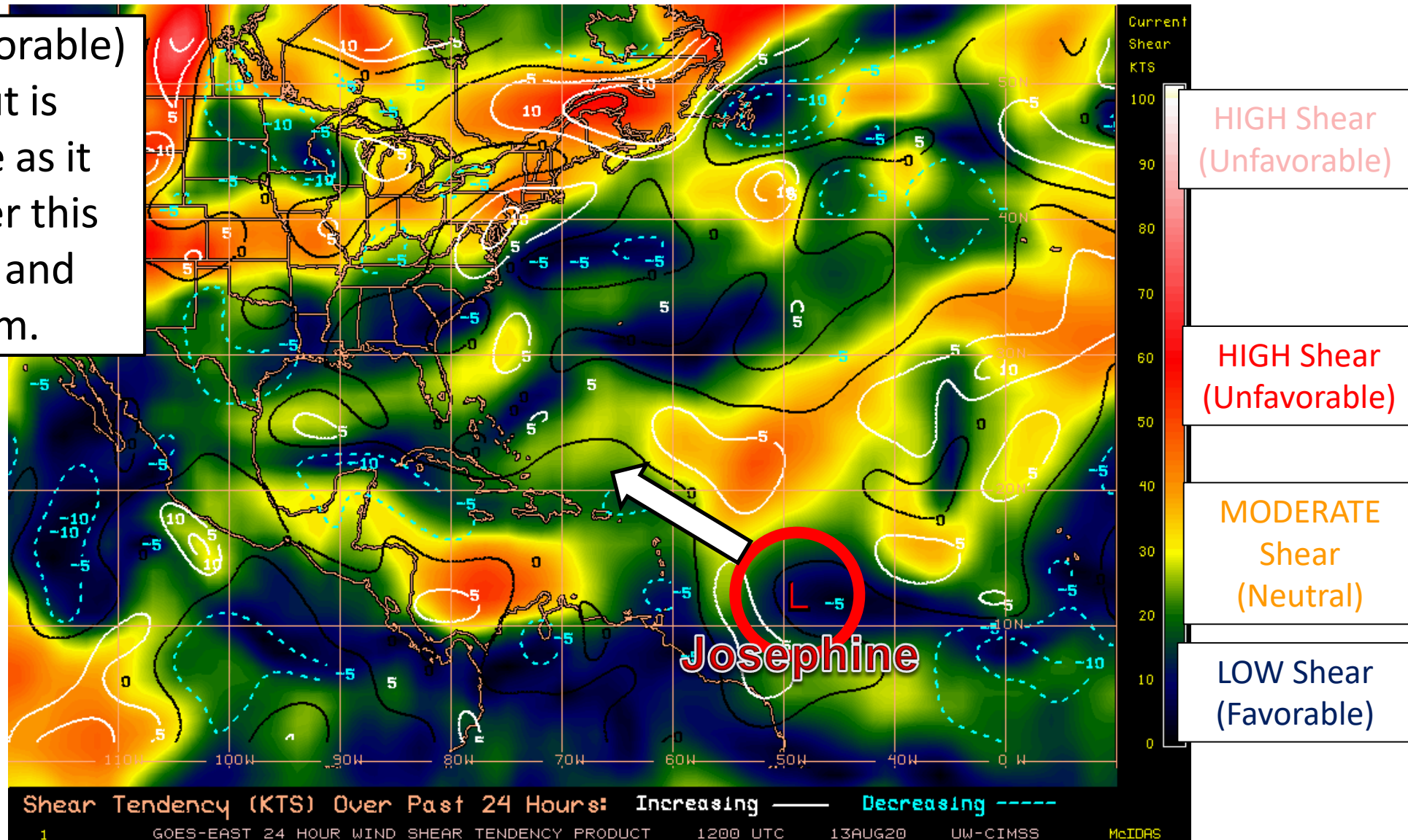


Wind Shear

Is the environment favorable for the system?

Color denotes the amount of wind shear and the lines denote how it have changed over the last 24 hours (dotted lines show decreasing shear and solid lines show increasing).

Wind shear is low (favorable) near Josephine, but is expected to increase as it nears the islands later this week (unfavorable) and weaken the system.

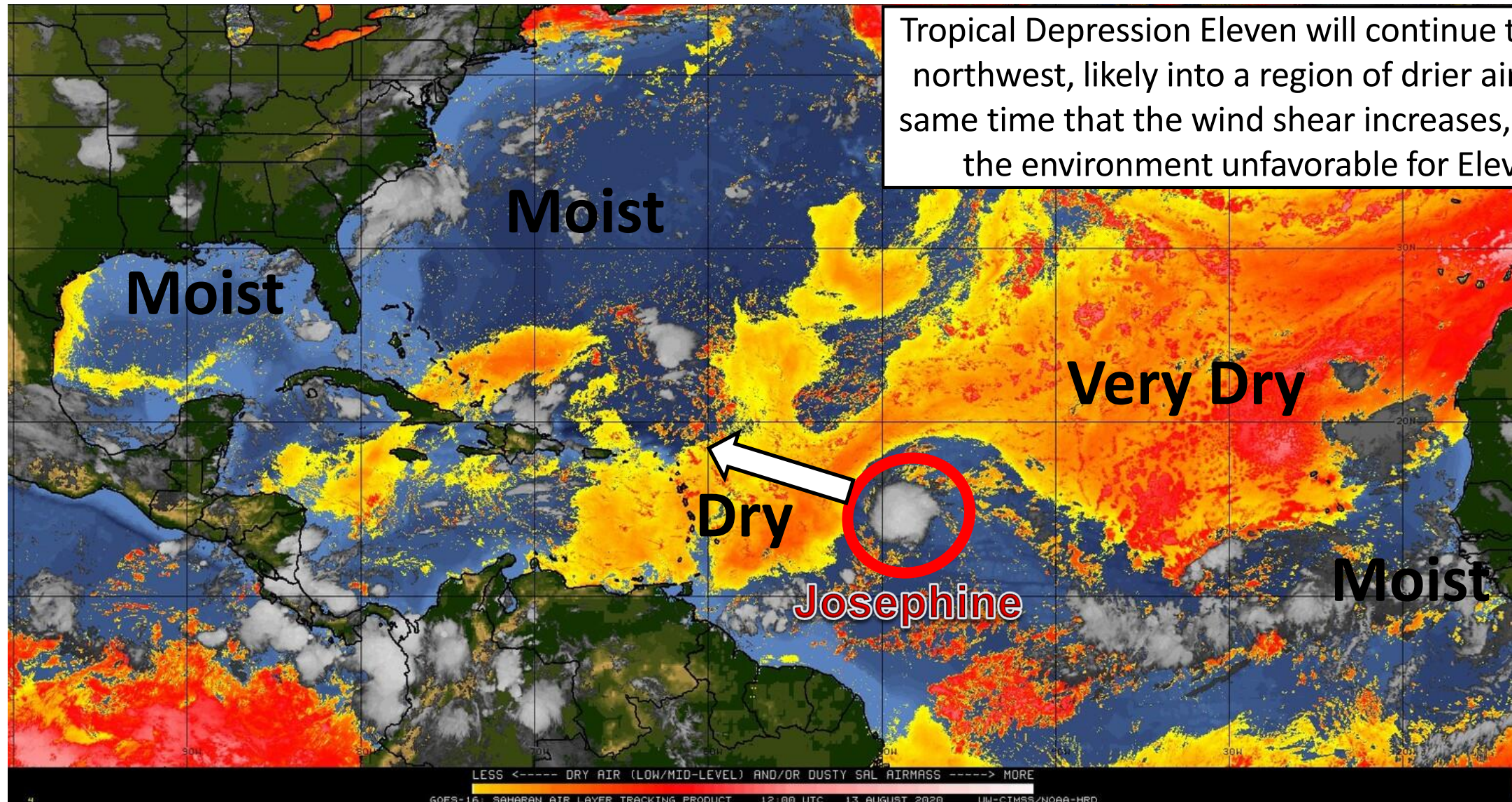




Dry Air & Saharan Dust

Is the environment favorable for the system?

Color denotes concentration of Saharan Dust or dry, stable air.





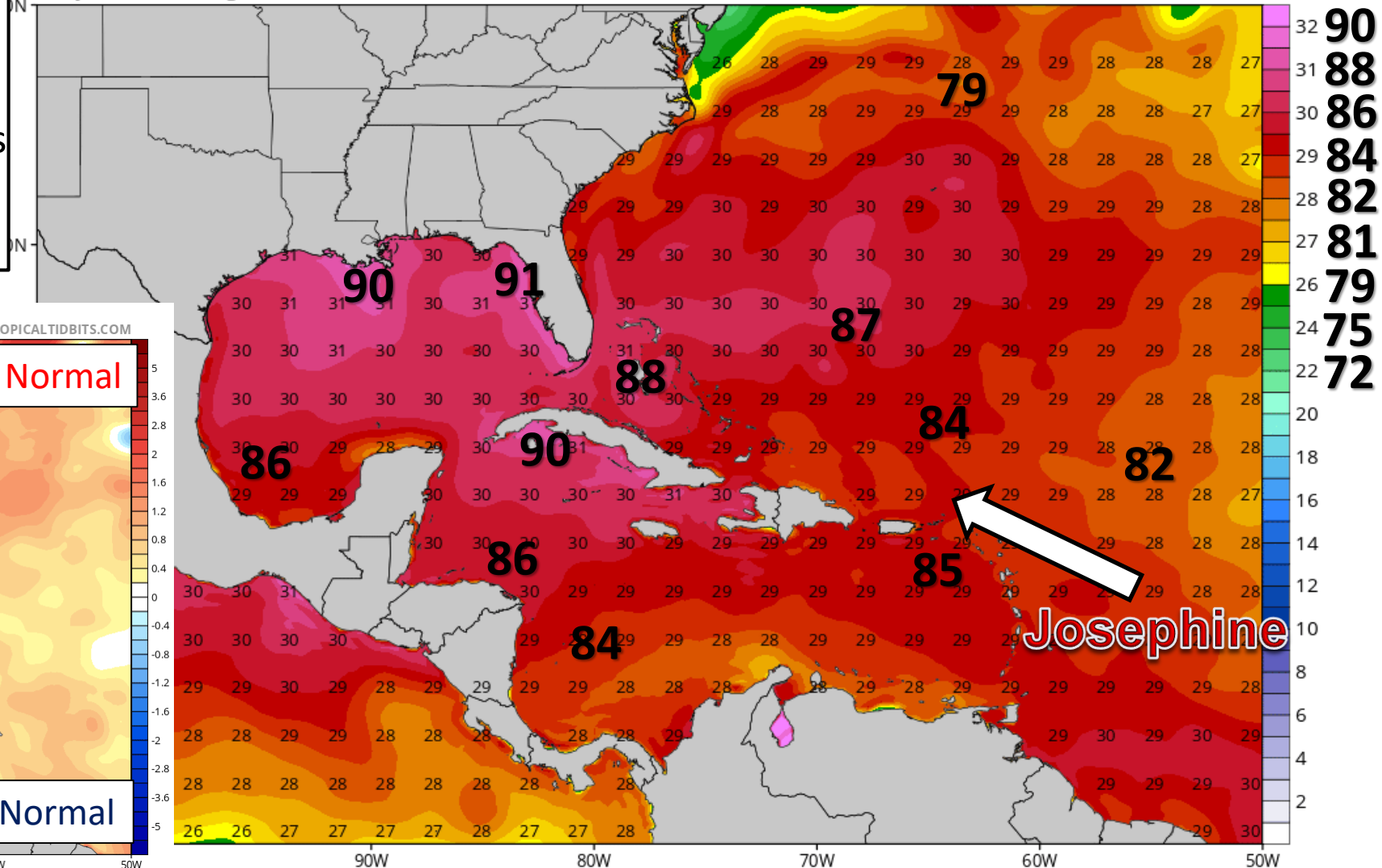
Sea Surface Temperatures & Anomalies

Is the ocean favorable for the system?

Water temperatures are supportive for tropical development across the entire Atlantic basin, and will continue to warm as Josephine moves west. Water temperatures are above normal across the entire Atlantic.

CDAS Sea Surface Temperature (°C)

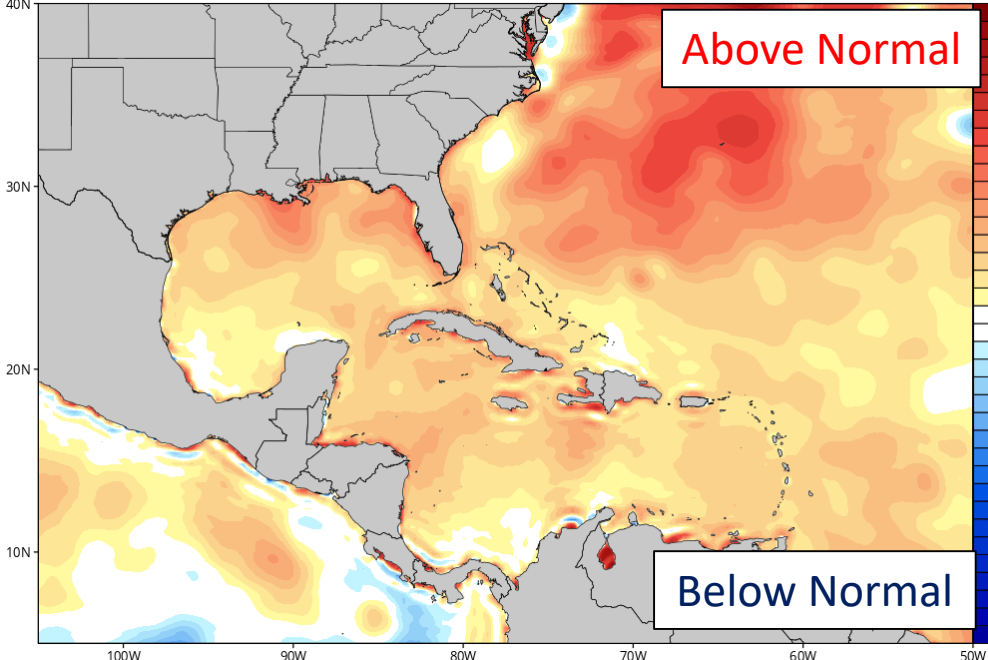
Analysis Time: 06z Aug 13 2020



°F
90
88
86
84
82
81
79
75
72

CDAS Sea Surface Temperature Anomaly (°C) (based on CFSR 1981-2010 Climatology)

Analysis Time: 06z Aug 13 2020





Overall Summary

Tropical Storm Josephine

- Tropical Depression 11 has become better organized and is now Tropical Storm Josephine.
- The center of Tropical Storm Josephine is about 975 miles east of the Lesser Antilles/Caribbean, moving to the west-northwest at 15 mph.
- Maximum sustained winds have increased to 45 mph, and additional strengthening is forecast over the next 24-36 hours.
- As the system heads northwest later this week north of Puerto Rico, the environment is forecast to be unfavorable and the system is expected to weaken. It is possible it dissipates entirely.
- After the islands, the forecast gets uncertain and will likely depend on if the system survives. There will be opportunity for it to turn north and out to sea early next week, but a weak, remnant system may continue northwest. The strength of a cold front over the North Atlantic is also uncertain.

Florida Outlook:

- This system poses no threat to Florida at this time (at least through early next week), but should continue to be monitored.

The next briefing packet will be issued late Friday morning. For the latest information on the tropics, please visit the National Hurricane Center website at www.hurricanes.gov.



TROPICAL UPDATE



Created by:

Cameron Young, Assistant State Meteorologist

Cameron.Young@em.myflorida.com

State Meteorological Support Unit

Florida Division of Emergency Management

Users wishing to subscribe (approval pending) to this distribution list, register at:

https://public.govdelivery.com/accounts/FLDEM/subscriber/new?topic_id=SERT_Met_Tropics.

Other reports available for subscription are available at:

<https://public.govdelivery.com/accounts/FLDEM/subscriber/new?preferences=true>