



TROPICAL UPDATE



11:00 AM EDT

Wednesday, August 12, 2020

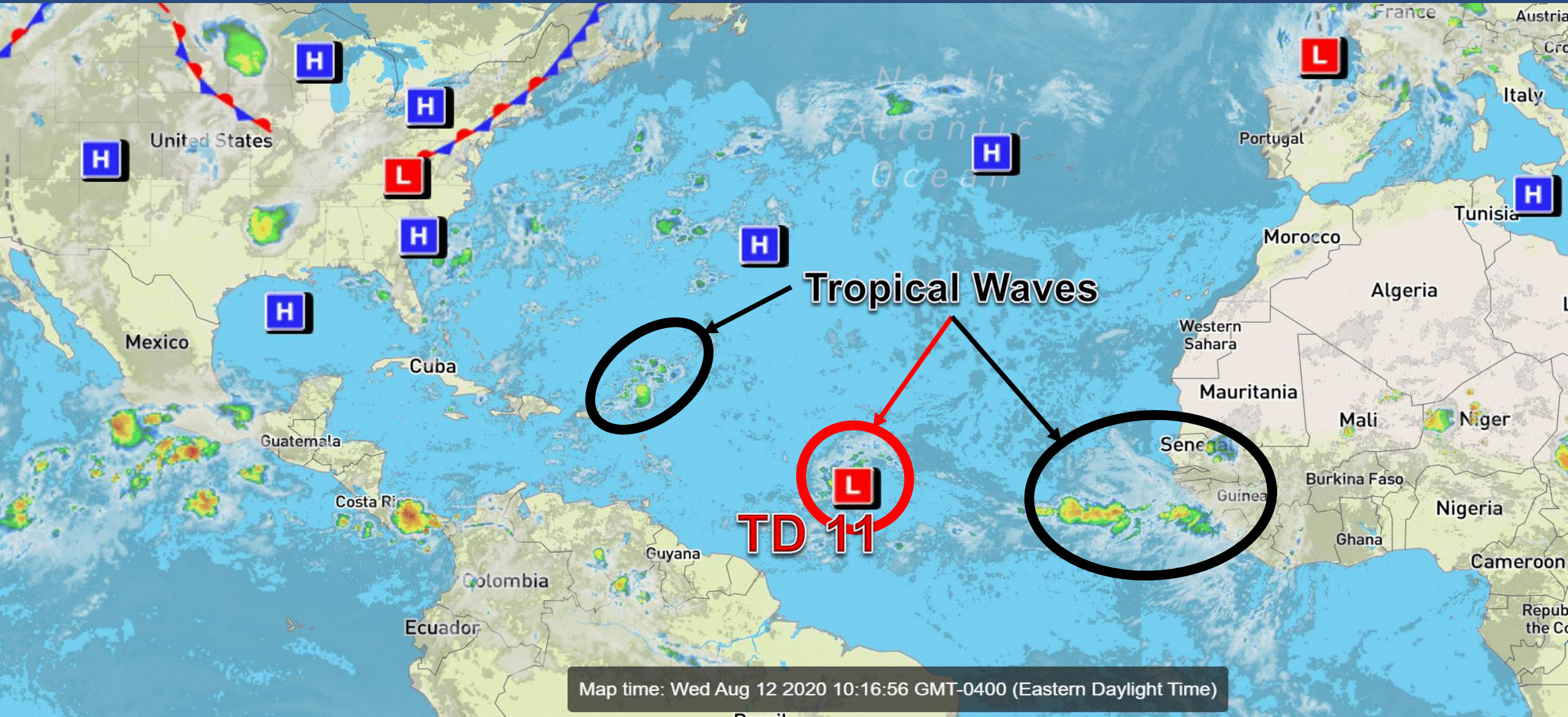
Tropical Depression Eleven

This update is intended for government and emergency response officials, and is provided for informational and situational awareness purposes only. Forecast conditions are subject to change based on a variety of environmental factors. For additional information, or for any life safety concerns with an active weather event please contact your County Emergency Management or Public Safety Office, local National Weather Service forecast office, or visit the National Hurricane Center website at www.hurricanes.gov.



Atlantic Basin Satellite Image

Chance of development: — None — Low — Medium — High



Map time: Wed Aug 12 2020 10:16:56 GMT-0400 (Eastern Daylight Time)

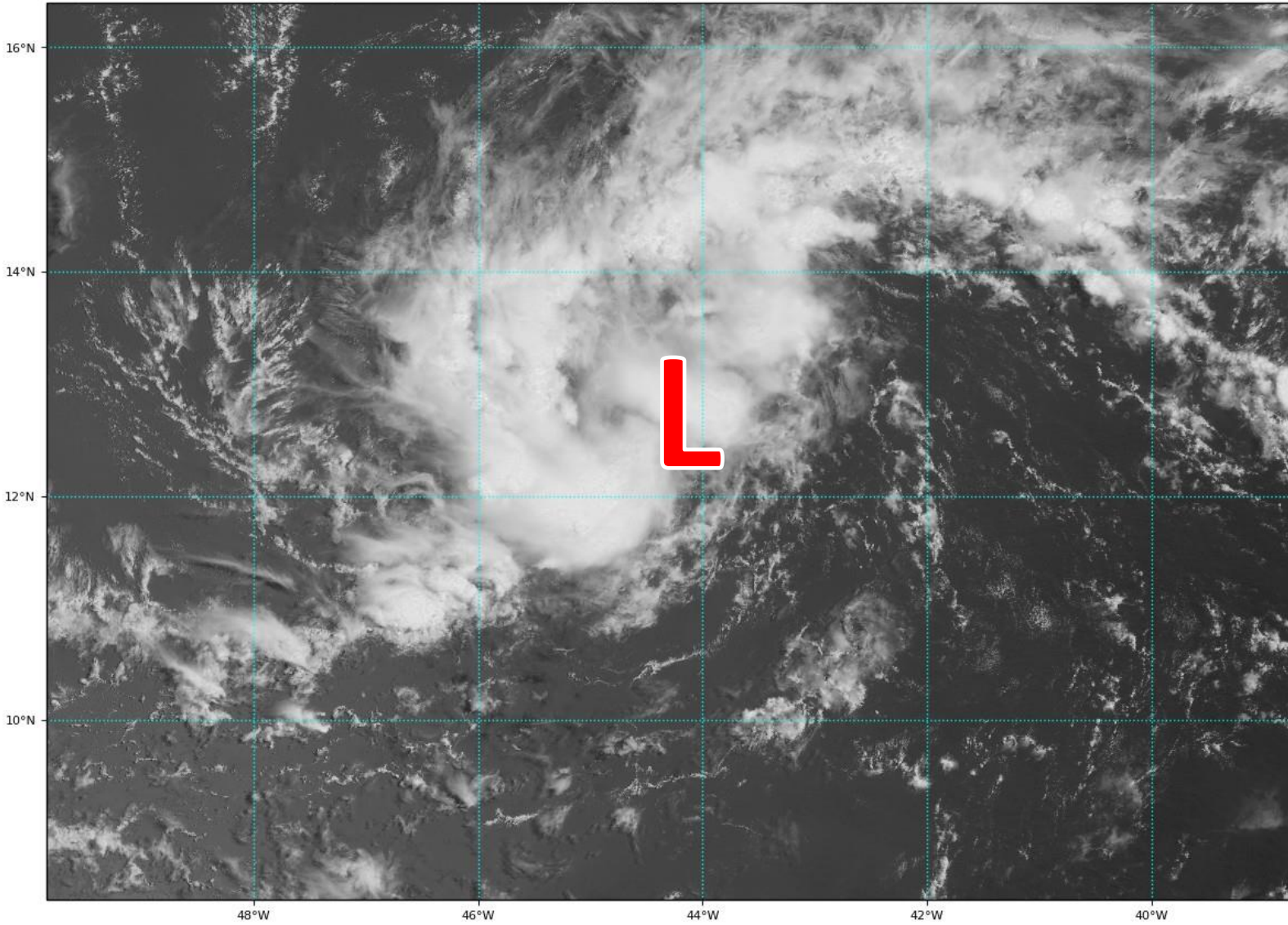


Satellite Imagery

Central Atlantic – Tropical Depression Eleven

GOES-16 Channel 2 (visible) Reflectance at 14:05Z Aug 12, 2020

TROPICALTIDBITS.COM

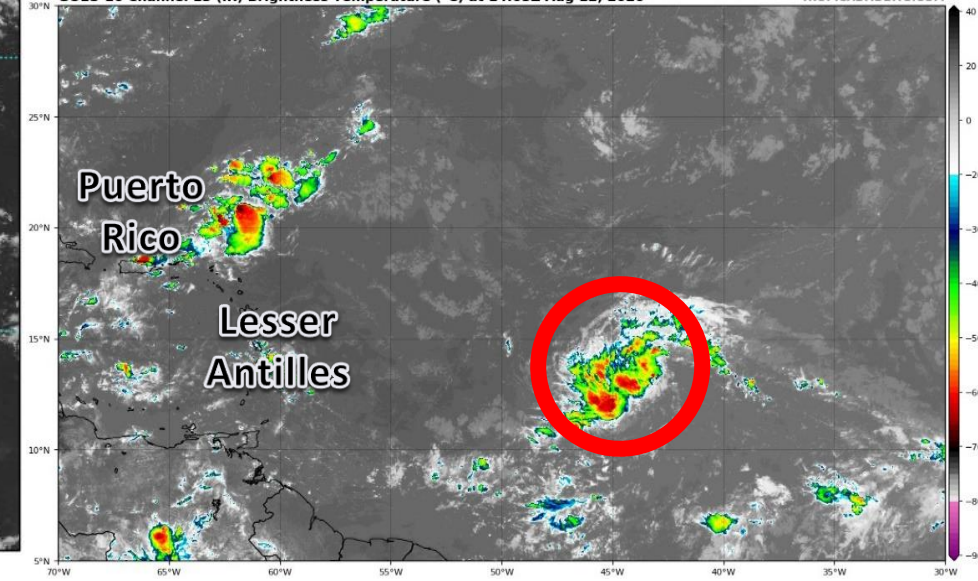


While the system continues to become more organized, thunderstorms are only located on the western side of the circulation.

The system is about a thousand miles east of the Lesser Antilles/Caribbean.

GOES-16 Channel 13 (IR) Brightness Temperature (°C) at 14:05Z Aug 12, 2020

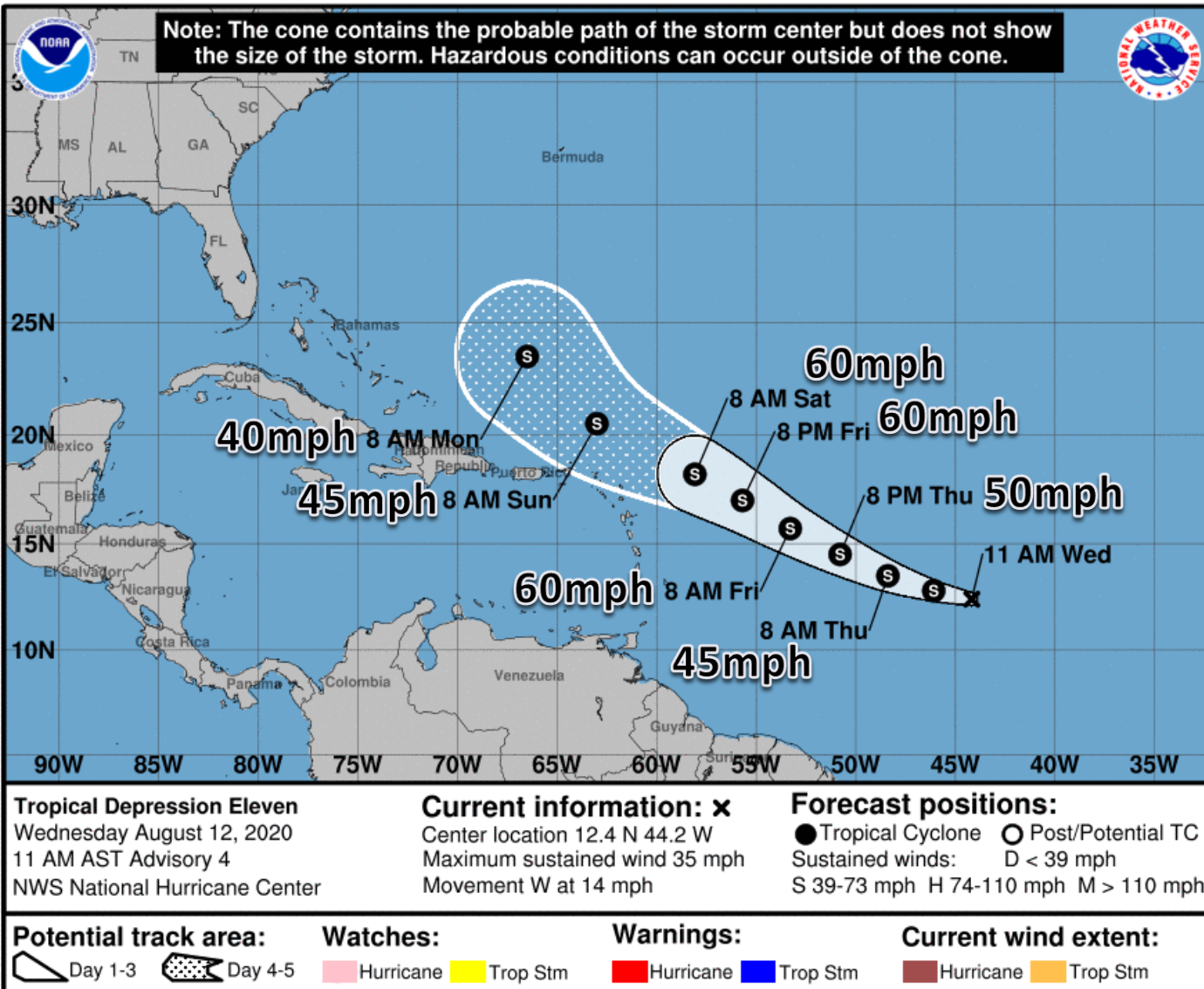
TROPICALTIDBITS.COM





Official Forecast Track

From the National Hurricane Center – Tropical Depression 11



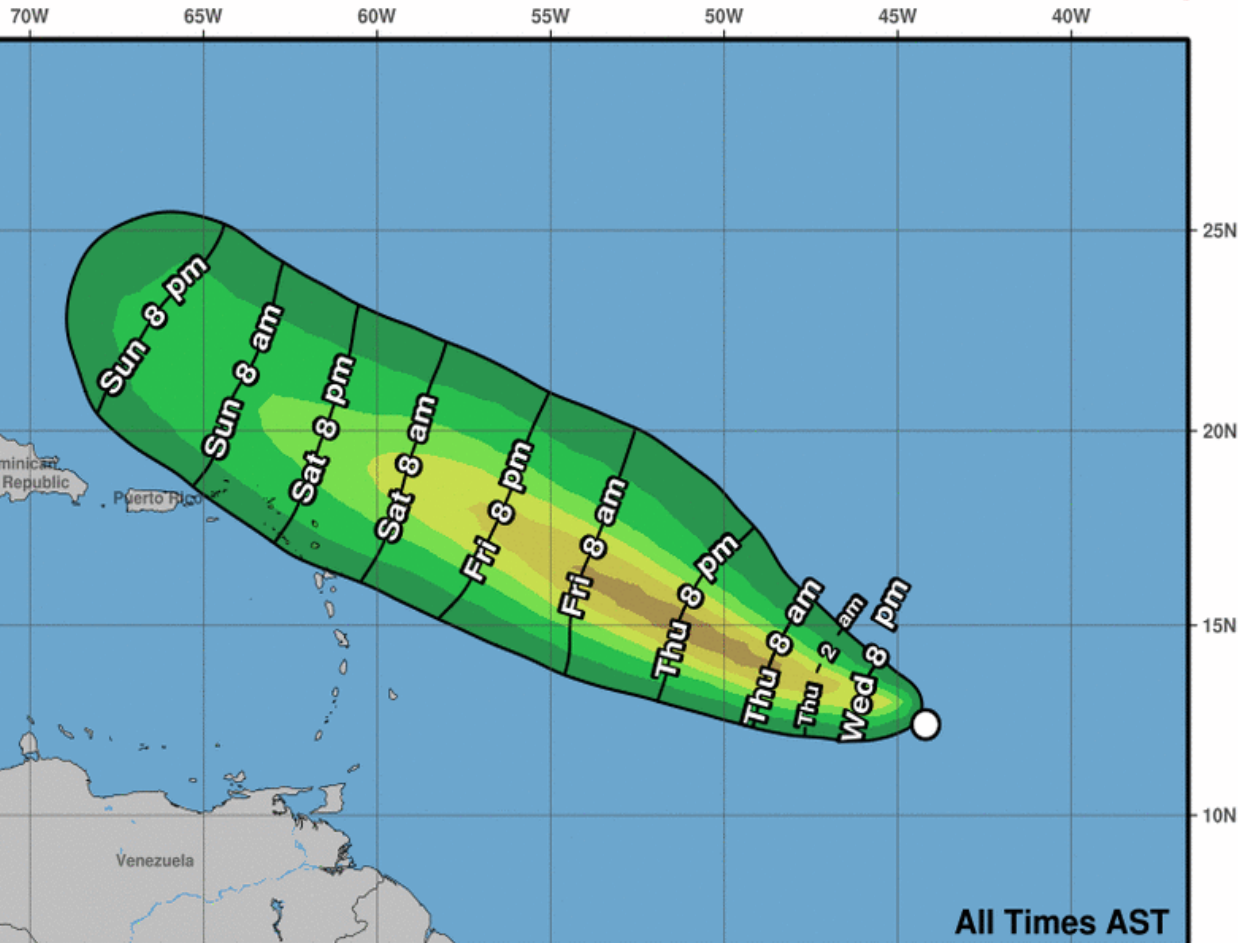
- The center of Tropical Depression Eleven is about 1,300 miles east of the Lesser Antilles/Caribbean Sea
- Maximum sustained winds are only at 35 mph, but some strengthening to a tropical storm is forecast over the next 24 hours.
- TD #11 is moving to the west at 14 mph. As the system heads northwest later this week, the environment is forecast to be unfavorable and the system is expected to weaken.
- This system poses no threat to Florida at this time (at least through early next week), but should continue to be monitored.



Time of Arrival & Wind Speed Probabilities

MOST LIKELY Time of Arrival of Tropical Storm Force Winds (>39 mph)

Most Likely Arrival Time of Tropical-Storm-Force Winds



The system will be near or north of the northeastern Caribbean, including Puerto Rico and the U.S. Virgin Islands, Saturday night.

Tropical Depression Eleven
Wed. Aug. 12, 2020 11 am AST
Advisory 4

Storm Location & Wind Speed

- < 34 kt (39 mph)
- 34-63 kt (39-73 mph)
- ≥ 64 kt (74 mph)

5-day chance of receiving sustained 34+ kt (39+ mph) winds

5	10	20	30	40	50	60	70	80	90	100 %
---	----	----	----	----	----	----	----	----	----	-------

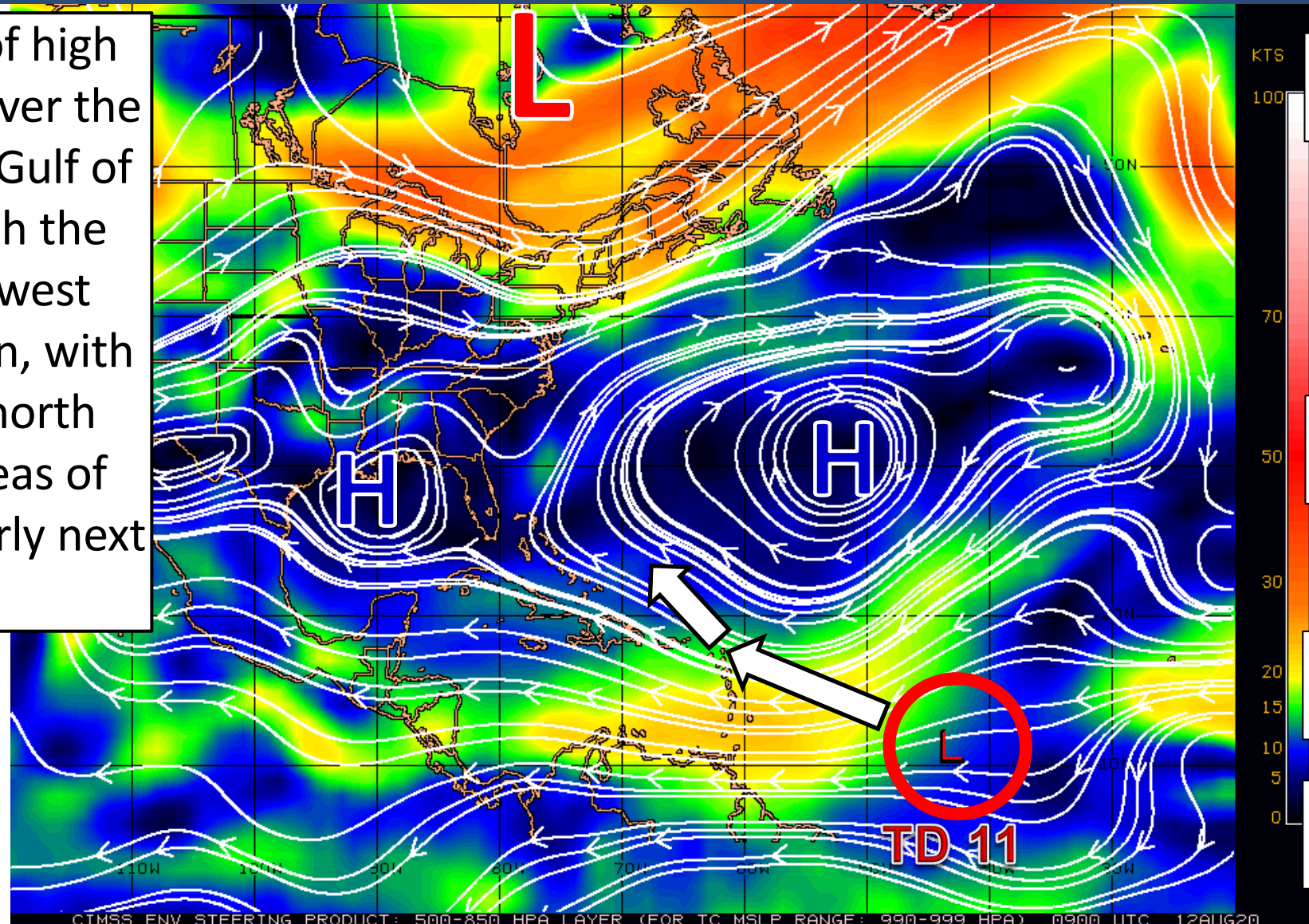


Steering Currents

What is moving the system?

Color denotes the movement speed through the atmosphere and thin white lines denote direction. Tightly clustered white lines represent faster movement as well.

A large, strong area of high pressure is centered over the Atlantic and over the Gulf of Mexico. This will push the tropical wave northwest towards the Caribbean, with a turn towards the north between the two areas of high pressure likely early next week.



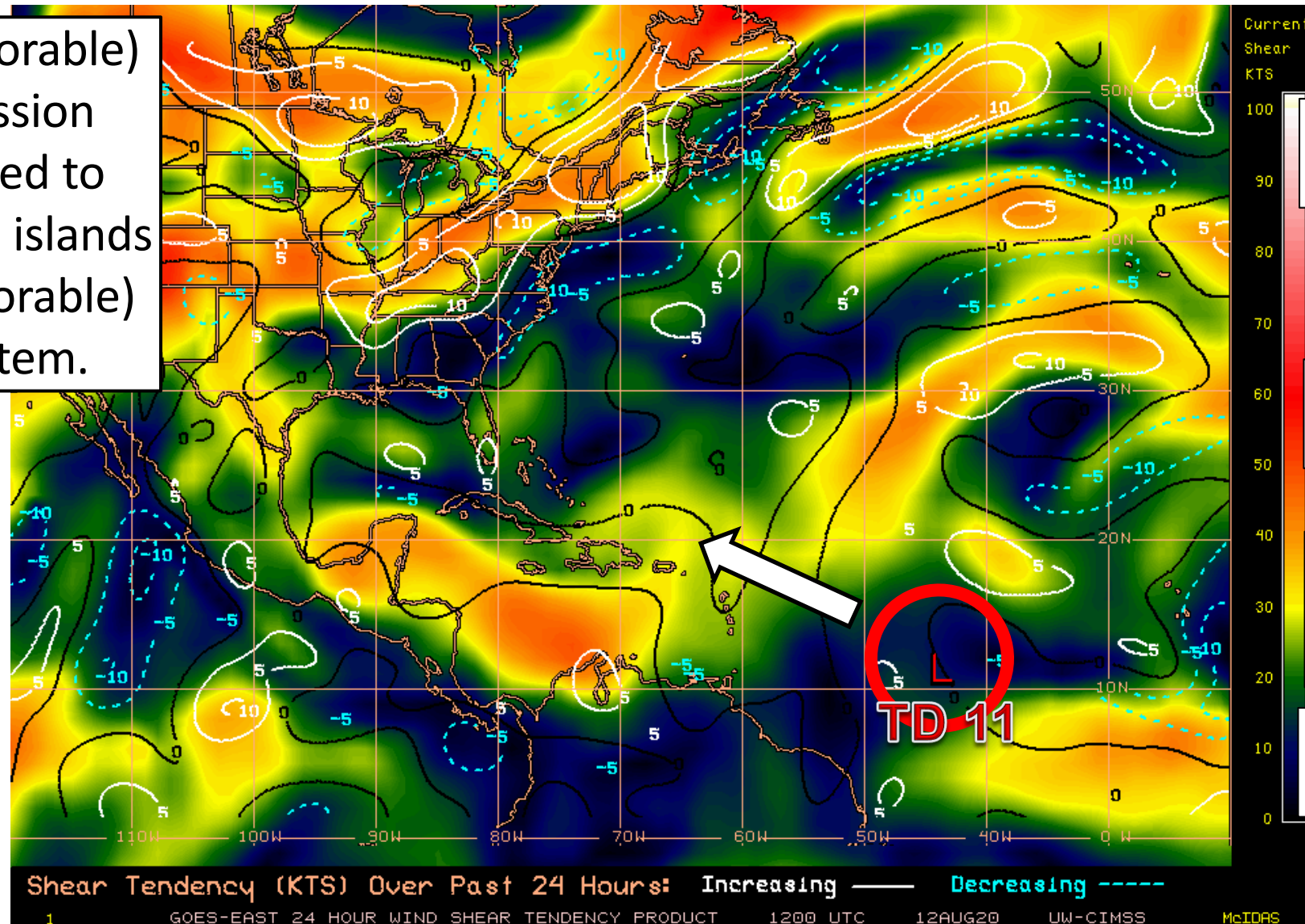


Wind Shear

Is the environment favorable for the system?

Color denotes the amount of wind shear and the lines denote how it have changed over the last 24 hours (dotted lines show decreasing shear and solid lines show increasing).

Wind shear is low (favorable) near Tropical Depression Eleven, but is expected to increase as it nears the islands later this week (unfavorable) and weaken the system.



HIGH Shear
(Unfavorable)

HIGH Shear
(Unfavorable)

MODERATE
Shear
(Neutral)

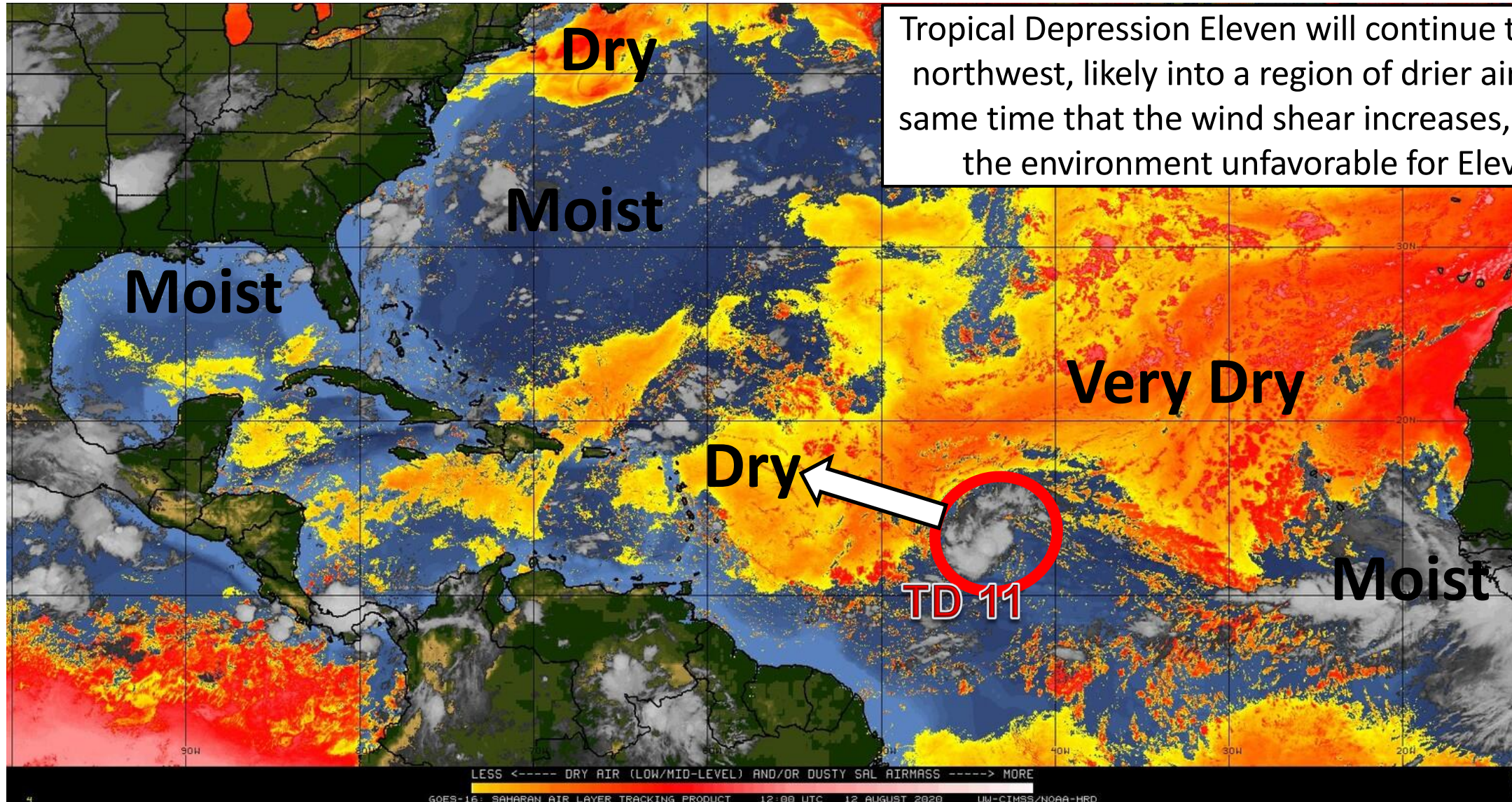
LOW Shear
(Favorable)



Dry Air & Saharan Dust

Is the environment favorable for the system?

Color denotes concentration of Saharan Dust or dry, stable air.



Tropical Depression Eleven will continue to move northwest, likely into a region of drier air at the same time that the wind shear increases, making the environment unfavorable for Eleven.



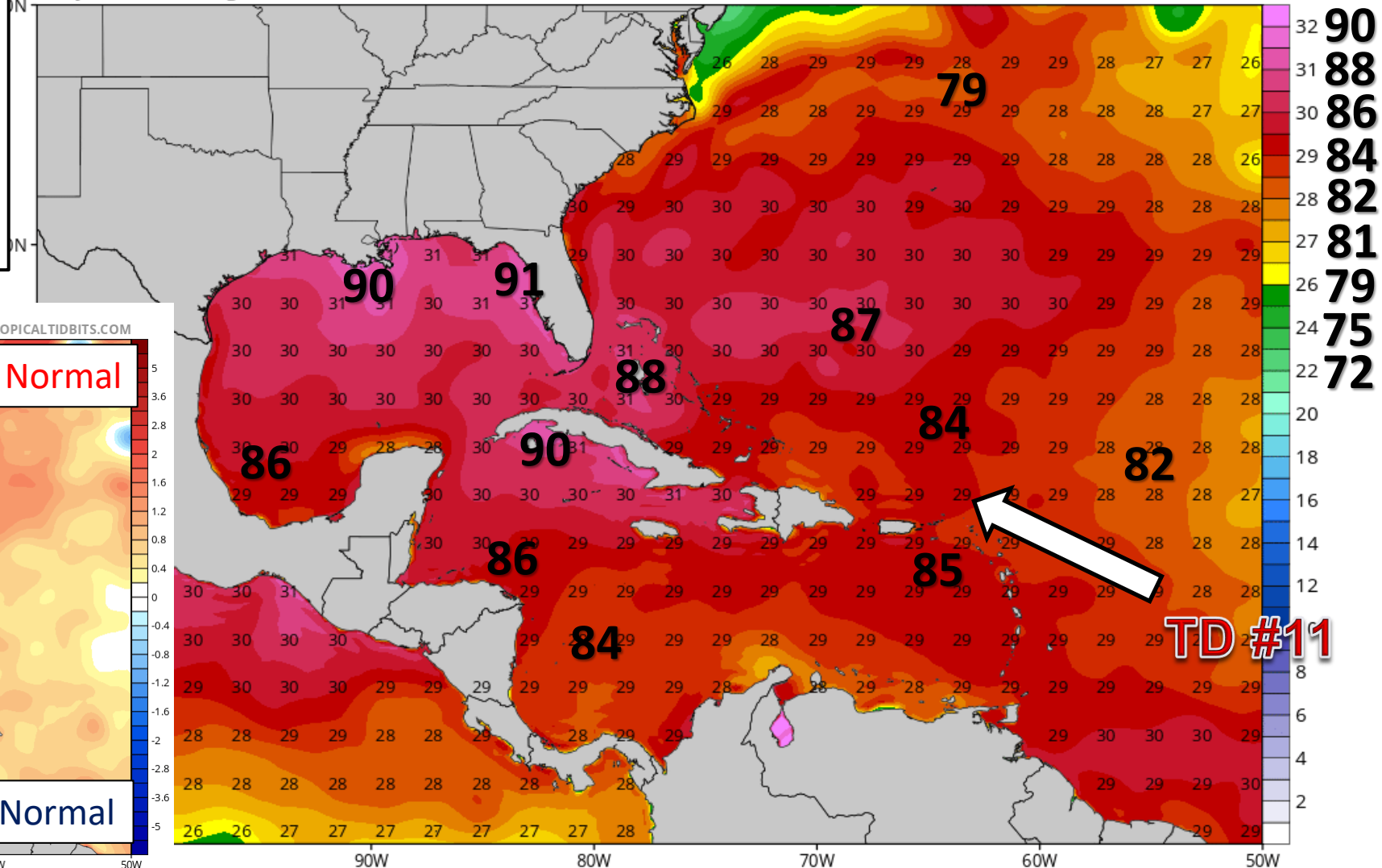
Sea Surface Temperatures & Anomalies

Is the ocean favorable for the system?

Water temperatures are supportive for tropical development across the entire Atlantic basin, and will continue to warm as TD #11 moves west. Water temperatures are above normal across the entire Atlantic.

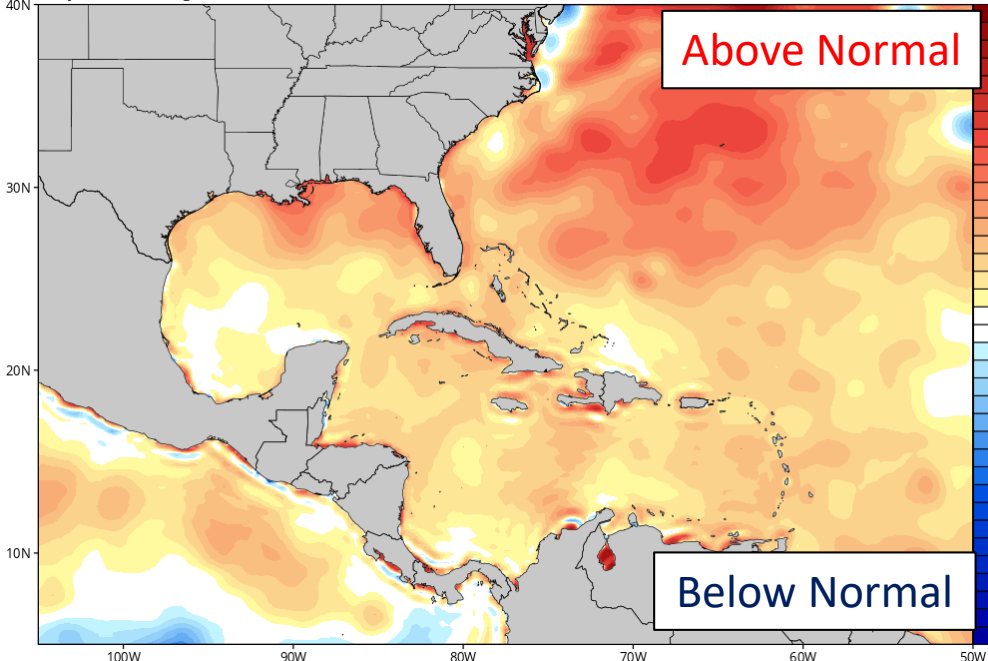
CDAS Sea Surface Temperature (°C)

Analysis Time: 06z Aug 12 2020



CDAS Sea Surface Temperature Anomaly (°C) (based on CFSR 1981-2010 Climatology)

Analysis Time: 06z Aug 12 2020





Overall Summary

Tropical Depression Eleven

- The tropical depression continues to gradually organize, but remains below tropical storm strength.
- The center of Tropical Depression 11 is about 1,300 miles east of the Lesser Antilles/Caribbean, moving to the west at 14 mph.
- Maximum sustained winds are only at 35 mph, but some strengthening to a tropical storm is forecast over the next 48 hours.
- As the system heads northwest later this week north of Puerto Rico, the environment is forecast to be unfavorable and the system is expected to weaken. It is possible it dissipates entirely.
- After the islands, the forecast gets uncertain and will likely depend on if the system survives. There will be opportunity for it to turn north and out to sea early next week, but a weak, remnant system may continue northwest. The strength of a cold front over the North Atlantic is also uncertain.
- The next name on the list is Josephine (JOH-seh-feen).

Florida Outlook:

- This system poses no threat to Florida at this time (at least through early next week), but should continue to be monitored.

The next briefing packet will be issued late Thursday morning. For the latest information on the tropics, please visit the National Hurricane Center website at www.hurricanes.gov.



TROPICAL UPDATE



Created by:

Michael Spagnolo, Deputy State Meteorologist

Michael.Spagnolo@em.myflorida.com

State Meteorological Support Unit

Florida Division of Emergency Management

Users wishing to subscribe (approval pending) to this distribution list, register at:

https://public.govdelivery.com/accounts/FLDEM/subscriber/new?topic_id=SERT_Met_Tropics.

Other reports available for subscription are available at:

<https://public.govdelivery.com/accounts/FLDEM/subscriber/new?preferences=true>