



TROPICAL UPDATE



11:00 AM EDT

Tuesday, August 11, 2020

Invest 95L (90%)

This update is intended for government and emergency response officials, and is provided for informational and situational awareness purposes only. Forecast conditions are subject to change based on a variety of environmental factors. For additional information, or for any life safety concerns with an active weather event please contact your County Emergency Management or Public Safety Office, local National Weather Service forecast office, or visit the National Hurricane Center website at www.hurricanes.gov.



Atlantic Basin Satellite Image

Chance of development: — None — Low — Medium — High





Tropical Weather Outlook

Possible Area of Development During the Next 5 Days ([LINK](#))



Five-Day Graphical Tropical Weather Outlook

National Hurricane Center Miami, Florida



Visible satellite imagery shows that a better-defined center of circulation is forming in association with a low pressure system located about 900 miles west-southwest of the Cabo Verde Islands.

In addition, the associated shower and thunderstorm activity has become more organized since yesterday.

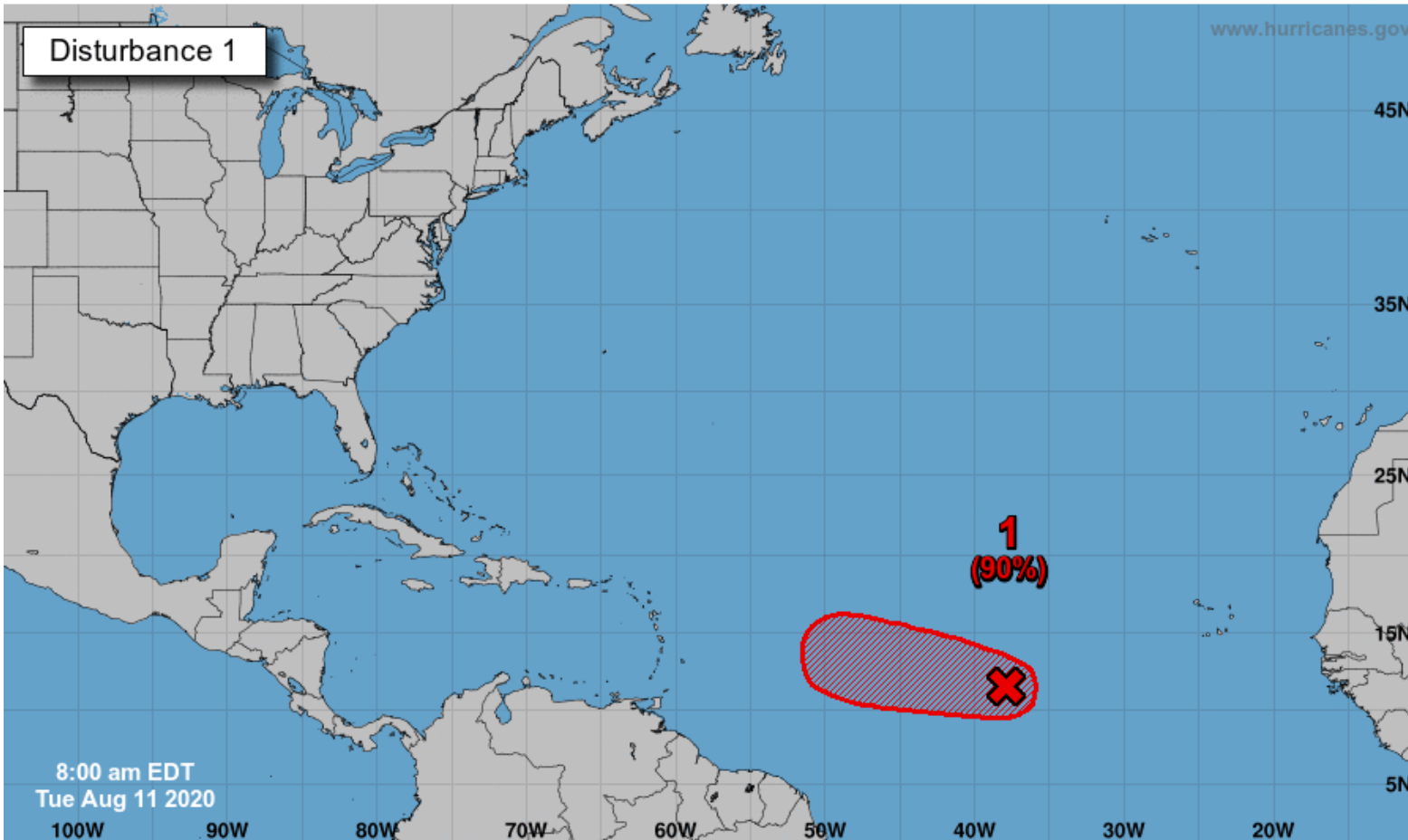
Environmental conditions are expected to become more conducive for additional development, and advisories could be initiated on a tropical depression as early as later today if these development trends continue.

The disturbance is forecast to move west-northwestward at around 15 mph across the tropical Atlantic during the next few days, and conditions are expected to become less conducive for development by the end of the week.

The next name on the list is Josephine.

***Formation chance through 48 hrs...high...90%**

***Formation chance through 5 days...high...90%**



8:00 am EDT
Tue Aug 11 2020

Current Disturbances and Five-Day Cyclone Formation Chance:
Tropical or Sub-Tropical Cyclone: ○ Depression ⚡ Storm 🌀 Hurricane
⊗ Post-Tropical Cyclone or Remnants

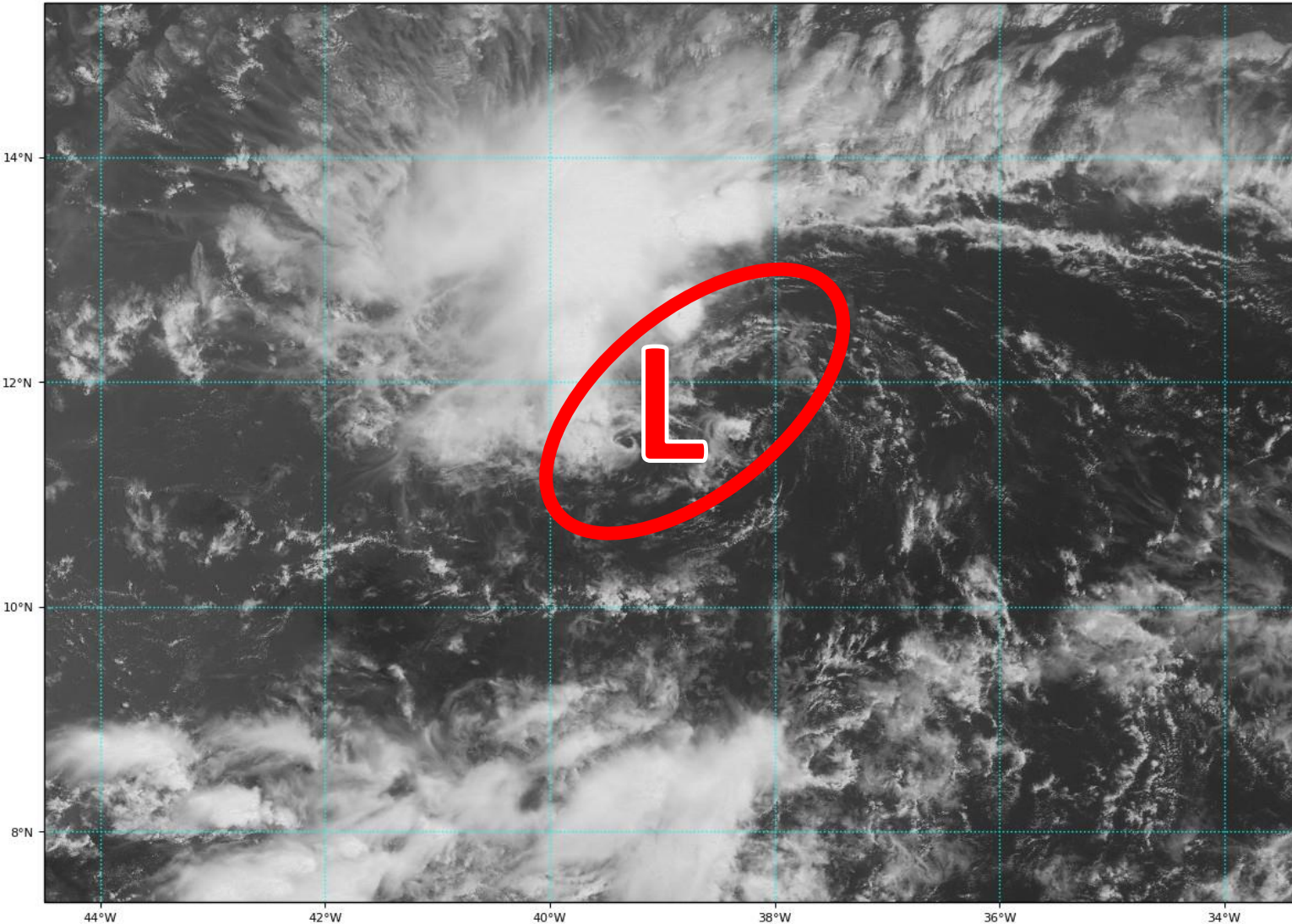


Satellite Imagery

Central Atlantic – Tropical Wave (90%)

GOES-16 Channel 2 (visible) Reflectance at 13:55Z Aug 11, 2020

TROPICALTIDBITS.COM

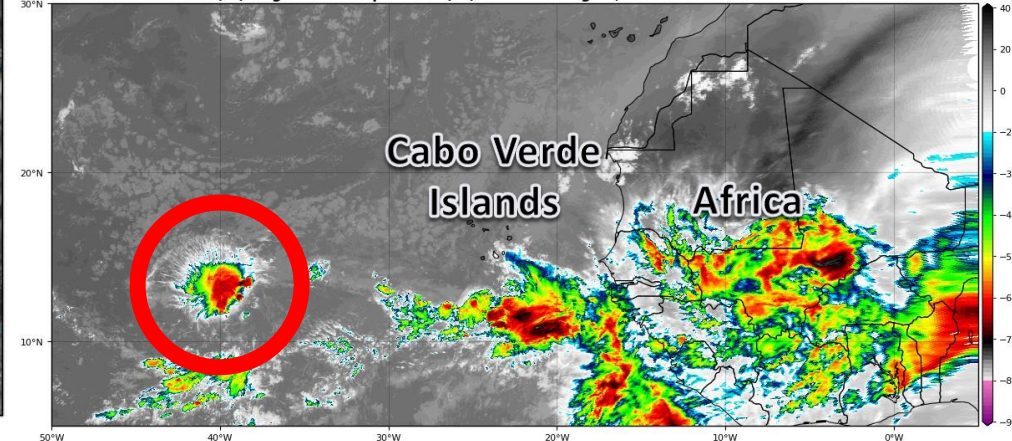


While more organized than yesterday, thunderstorms are only located on the western side of the circulation, and the circulation remains tiny and elongated. Some dry air may have wrapped into the system.

The system is several hundred miles southwest of the Cabo Verde Islands, which puts it some **3,000 miles southeast of Miami, FL.**

GOES-16 Channel 13 (IR) Brightness Temperature (°C) at 13:55Z Aug 11, 2020

TROPICALTIDBITS.COM



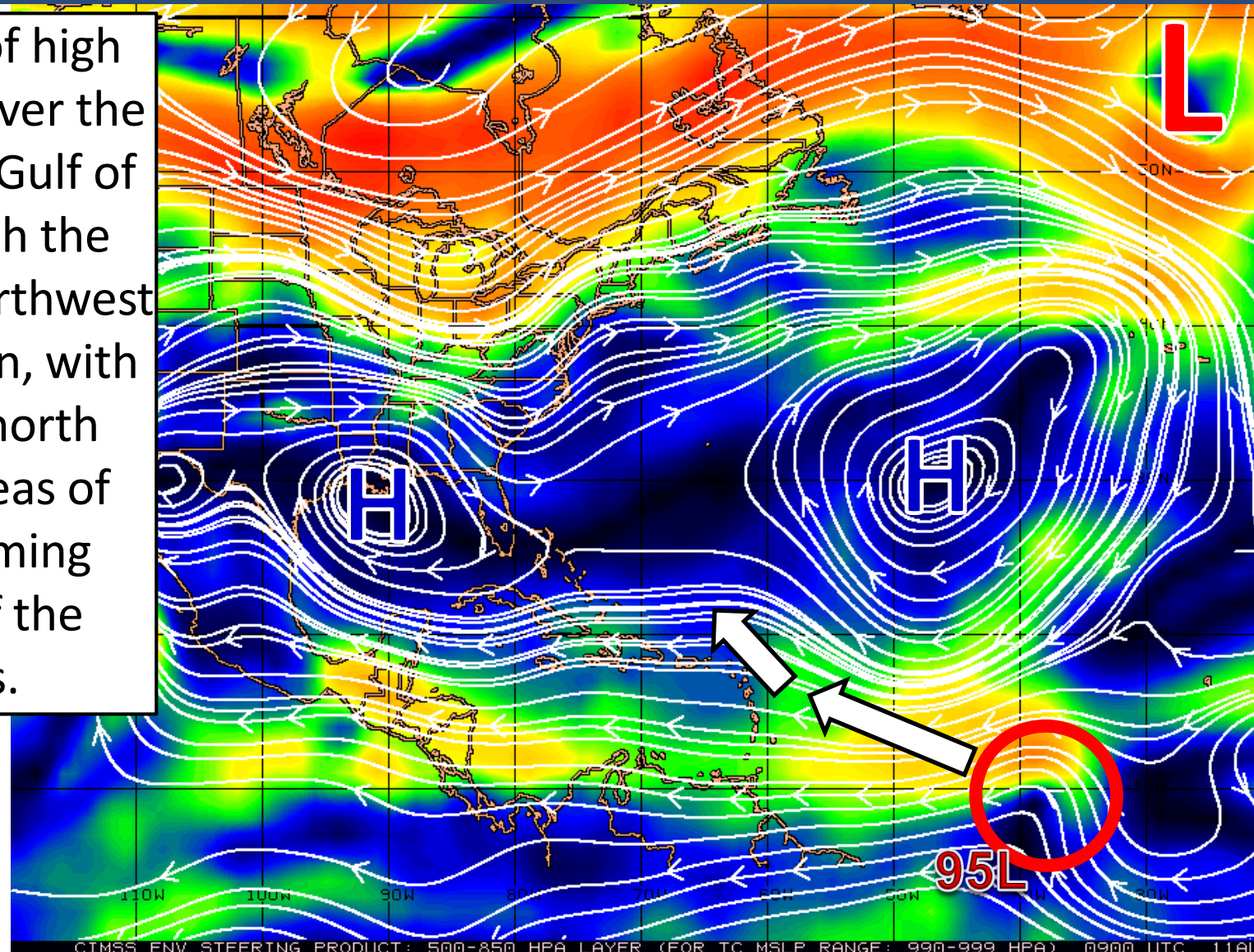


Steering Currents

What is moving the system?

Color denotes the movement speed through the atmosphere and thin white lines denote direction. Tightly clustered white lines represent faster movement as well.

A large, strong area of high pressure is centered over the Atlantic and over the Gulf of Mexico. This will push the tropical wave west/northwest towards the Caribbean, with a turn towards the north between the two areas of high pressure becoming increasingly likely if the system develops.



KTS

100

70

50

30

20

15

10

5

0

Fast Moving Storm

Fast Moving Storm

Typical Moving Storm

Slow Moving Storm

CIMSS ENV STEERING PRODUCT: 500-850 HPA LAYER (FOR TC MSLP RANGE: 990-999 HPA) 0900 UTC 11AUG20



Model Forecast Tracks

Dynamical & Ensembles Models

The system will near the northeastern Caribbean Islands this weekend.

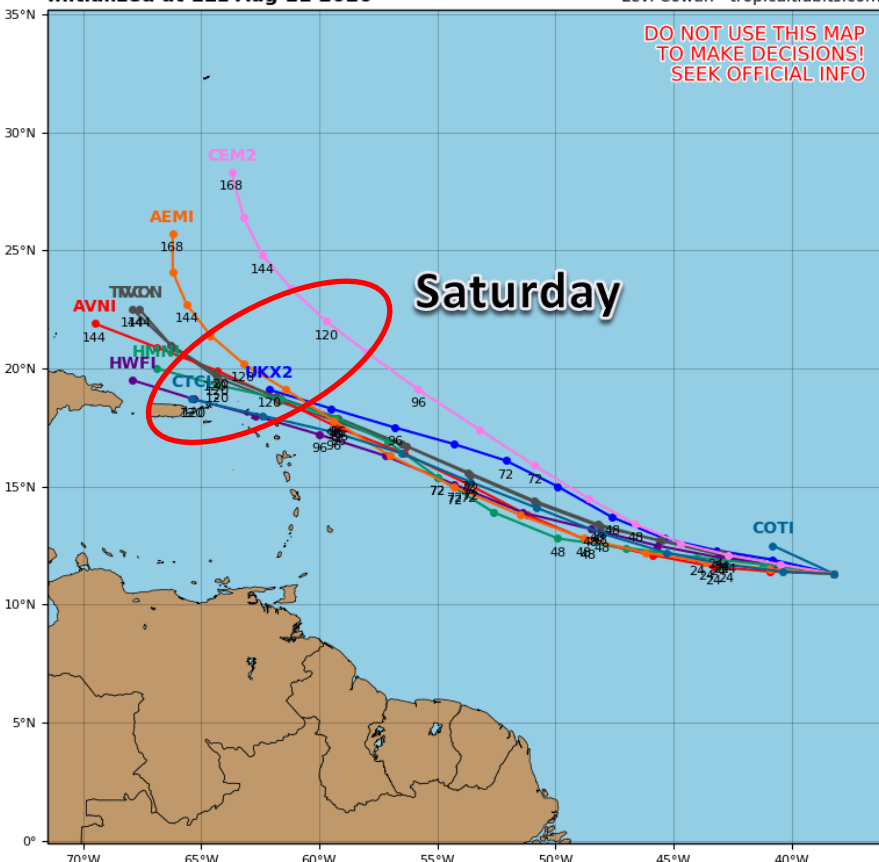
Invest 95L Model Track Guidance

Initialized at 12z Aug 11 2020

Levi Cowan - tropicaltidbits.com

DO NOT USE THIS MAP
TO MAKE DECISIONS!
SEEK OFFICIAL INFO

Saturday



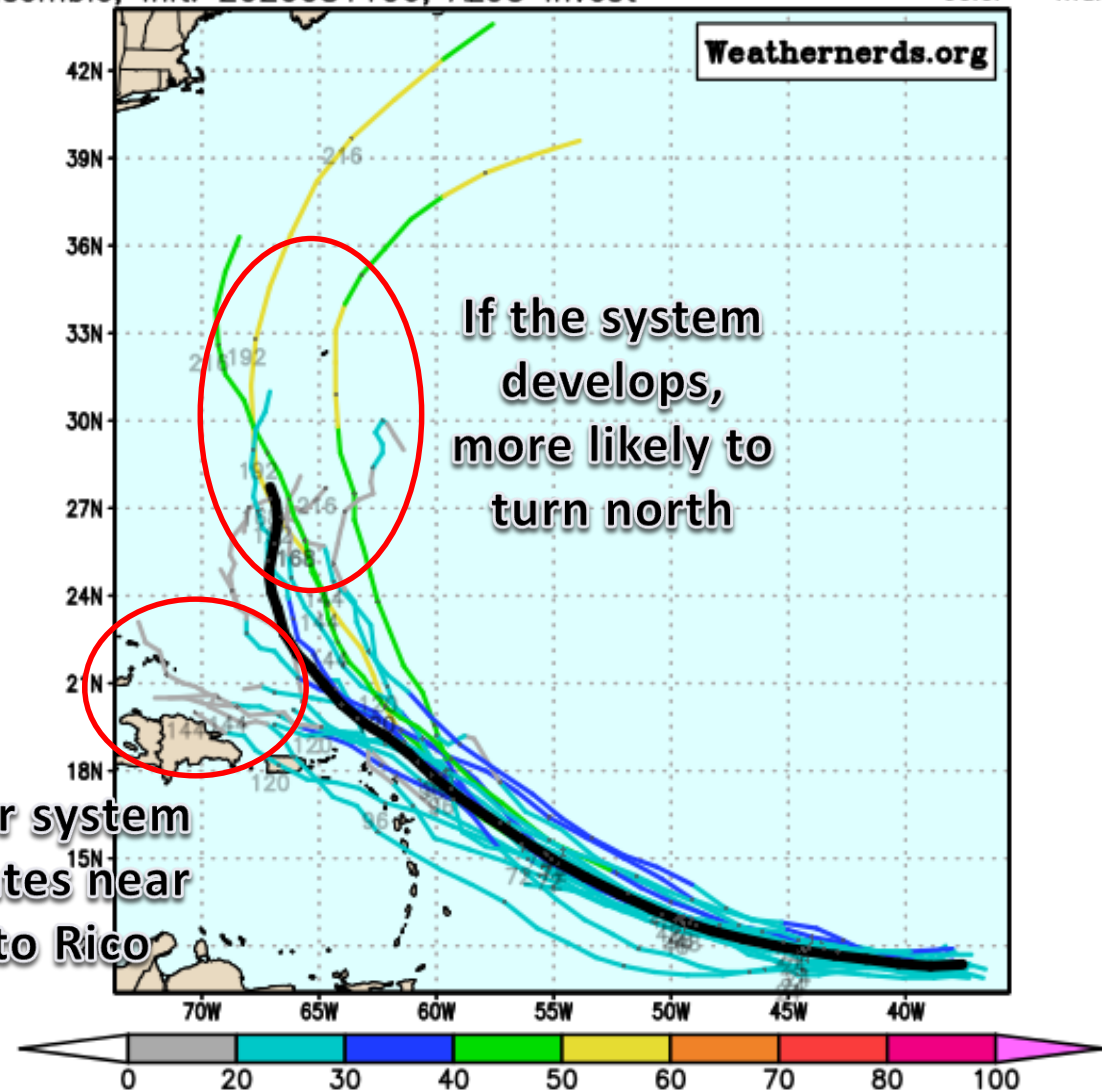
GFS Ensemble, init: 2020081106, AL95 Invest

color = max wind (kt)

Weathernerds.org

If the system
develops,
more likely to
turn north

Weaker system
dissipates near
Puerto Rico



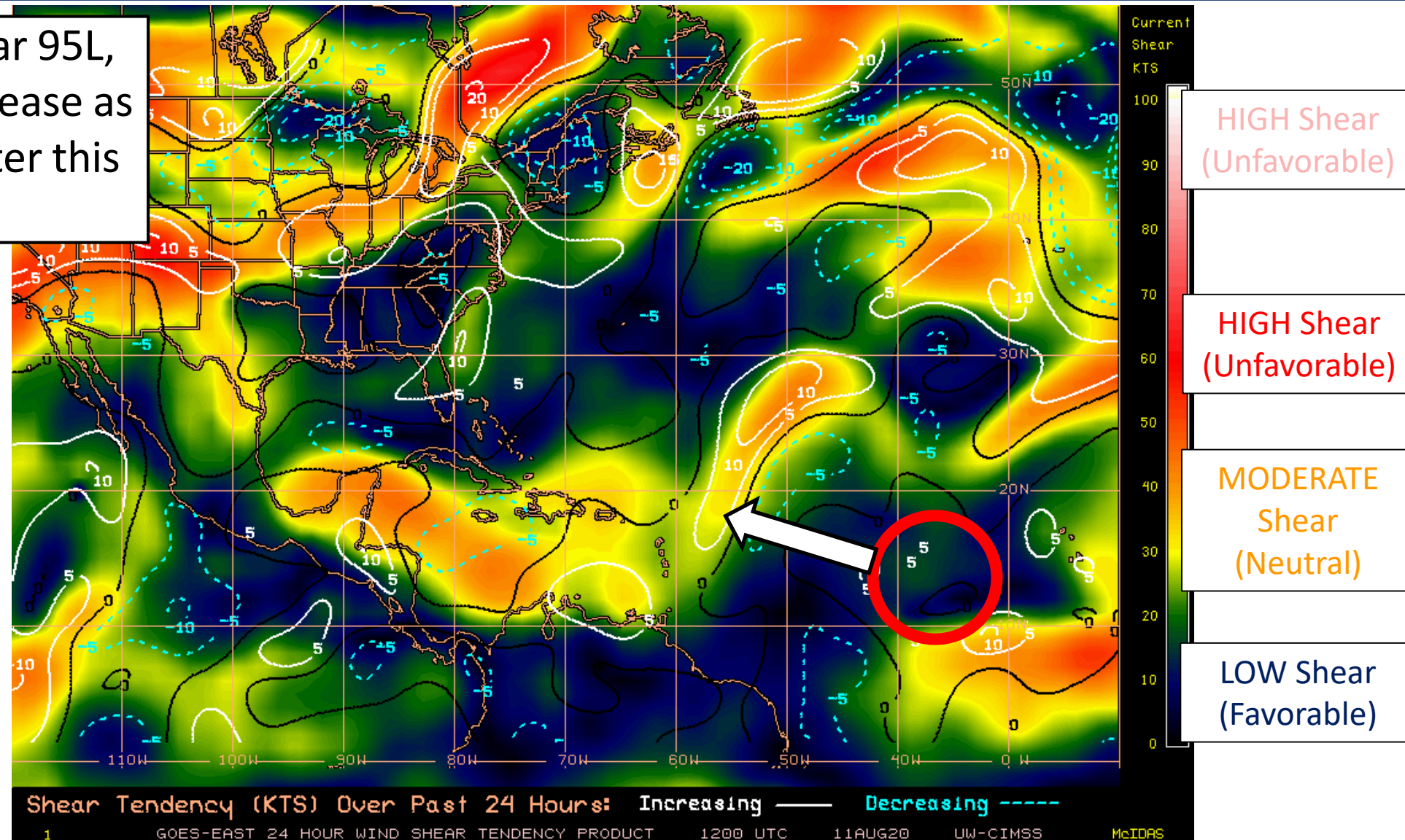


Wind Shear

Is the environment favorable for the system?

Color denotes the amount of wind shear and the lines denote how it have changed over the last 24 hours (dotted lines show decreasing shear and solid lines show increasing).

Wind shear is low near 95L, but is expected to increase as it nears the islands later this week.

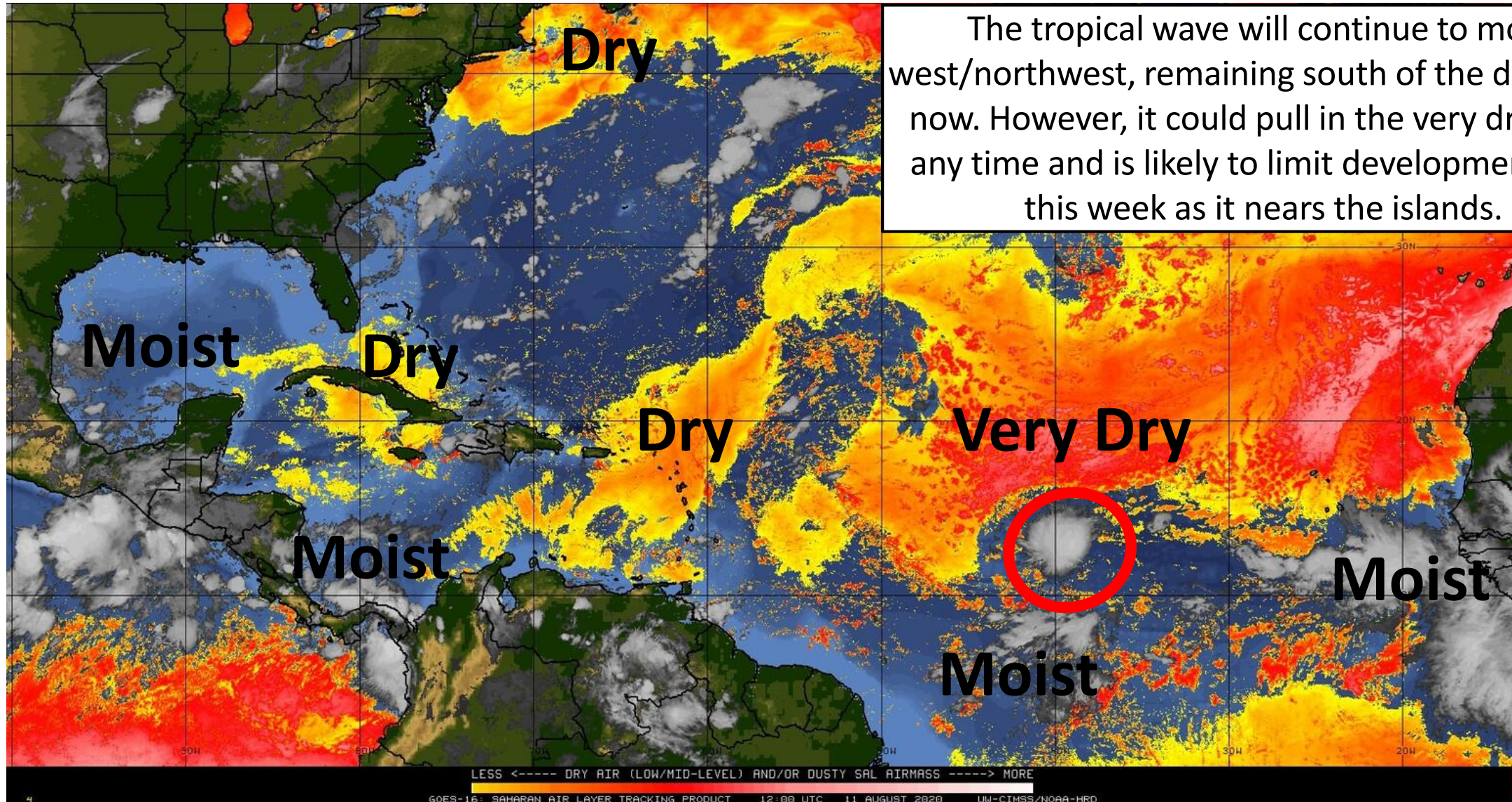




Dry Air & Saharan Dust

Is the environment favorable for the system?

Color denotes concentration of Saharan Dust or dry, stable air.





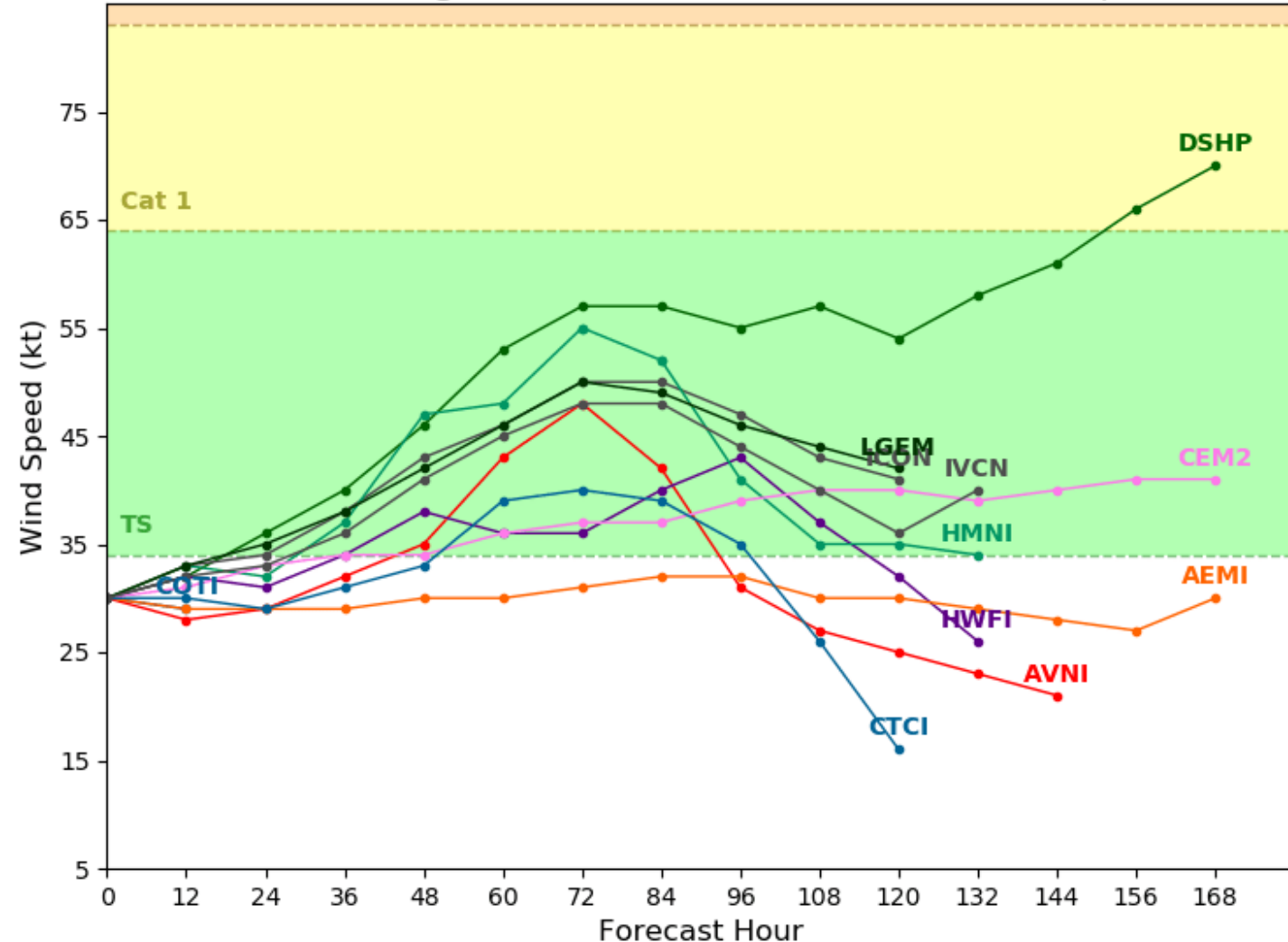
Model Forecast Intensity

Dynamical and Statistical Models – 95L

Invest 95L Model Intensity Guidance

Initialized at 12z Aug 11 2020

Levi Cowan - tropicaltidbits.com



Some limited organization is forecast by most models as the system moves to the northwest over the next 48 hours.

By later in the week, the environment becomes unfavorable and there is nearly unanimous weakening shown by the models for what limited of a system does develop.



Overall Summary

Invest 95L - Eastern Atlantic Tropical Wave

- A tropical wave located several hundred miles southwest of the Cabo Verde Islands in the far eastern Atlantic is attempting to organize, producing some more organized showers and thunderstorms overnight.
- However, the circulation remains small and elongated with storms only on the northwest side of the circulation.
- Environmental conditions support some development of this system over the next couple of days, and a tropical depression could form while it moves generally west/northwest at 10-15 mph across the tropical Atlantic.
- Conditions are likely to become hostile late this week as it nears the northeastern Caribbean and weakening or dissipation seems likely at this time.
- If a system does develop, it will be more likely to turn north of the islands and head out to sea.
- This system has a 90% (high) chance of formation over the next 48 hours and 5 days.

Florida Outlook:

- Invest 95L poses no threat to Florida through early next week, if at all.

The next briefing packet will be issued late Wednesday morning. For the latest information on the tropics, please visit the National Hurricane Center website at www.hurricanes.gov.



TROPICAL UPDATE



Created by:

Michael Spagnolo, Deputy State Meteorologist

Michael.Spagnolo@em.myflorida.com

State Meteorological Support Unit

Florida Division of Emergency Management

Users wishing to subscribe (approval pending) to this distribution list, register at:

https://public.govdelivery.com/accounts/FLDEM/subscriber/new?topic_id=SERT_Met_Tropics.

Other reports available for subscription are available at:

<https://public.govdelivery.com/accounts/FLDEM/subscriber/new?preferences=true>