



TROPICAL UPDATE



5:00 PM EDT

Tuesday, July 28, 2020

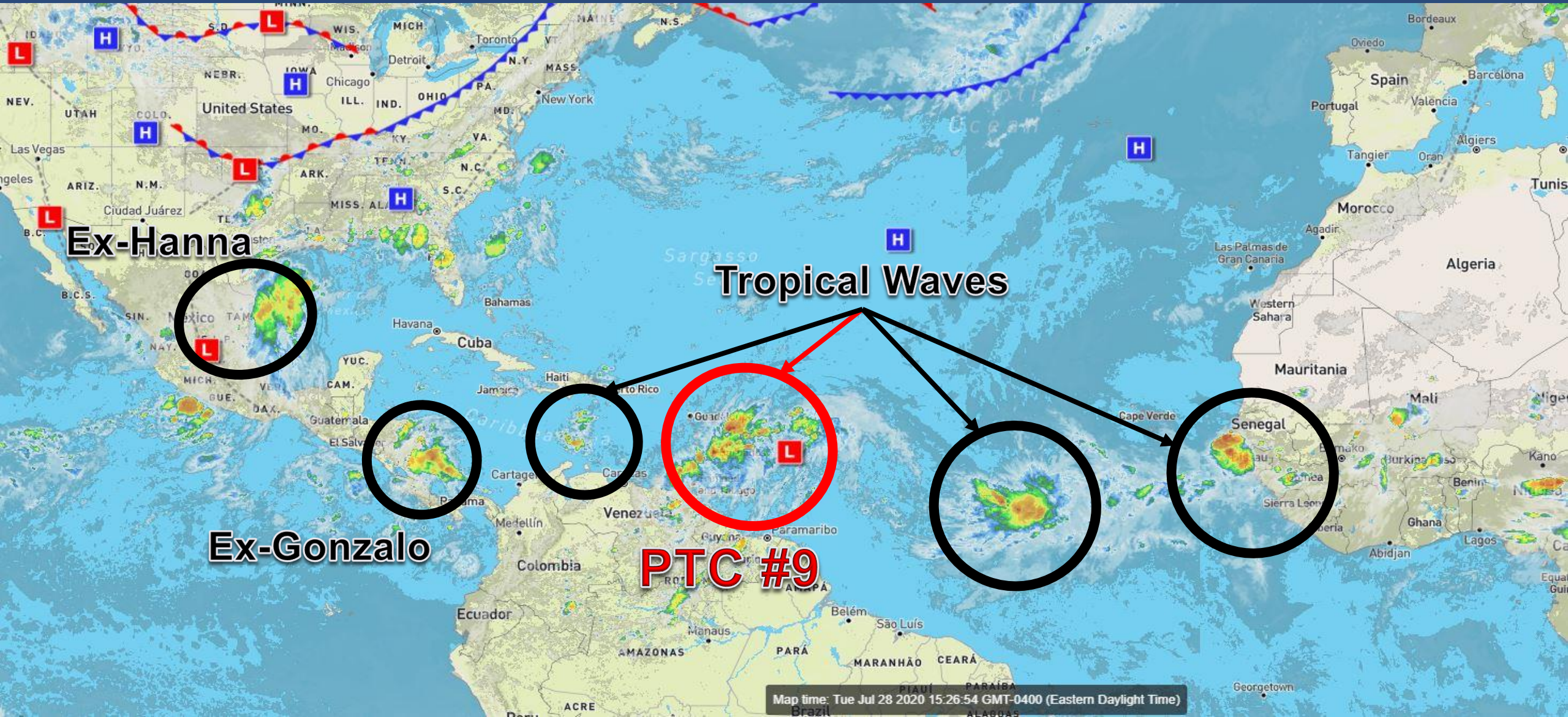
Potential Tropical Cyclone Nine (90%)

This update is intended for government and emergency response officials, and is provided for informational and situational awareness purposes only. Forecast conditions are subject to change based on a variety of environmental factors. For additional information, or for any life safety concerns with an active weather event please contact your County Emergency Management or Public Safety Office, local National Weather Service forecast office, or visit the National Hurricane Center website at www.hurricanes.gov.



Atlantic Basin Satellite Image

Chance of development: — None — Low — Medium — High



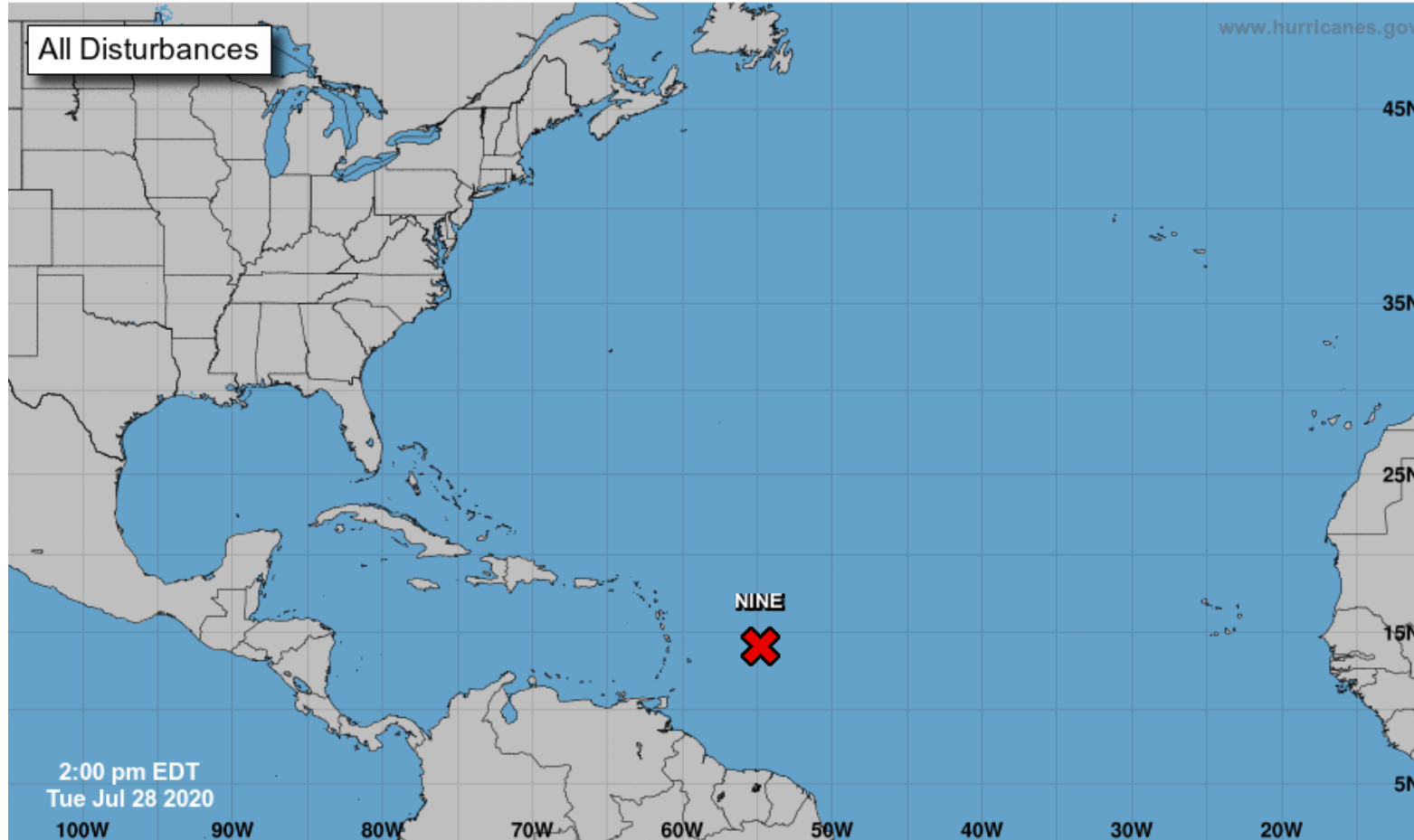


Tropical Weather Outlook

Possible Areas of Development During the Next 5 Days ([LINK](#))



Five-Day Graphical Tropical Weather Outlook National Hurricane Center Miami, Florida



Current Disturbances and Five-Day Cyclone Formation Chance: < 40% 40-60% > 60%

Tropical or Sub-Tropical Cyclone: Depression Storm Hurricane

Post-Tropical Cyclone or Remnants

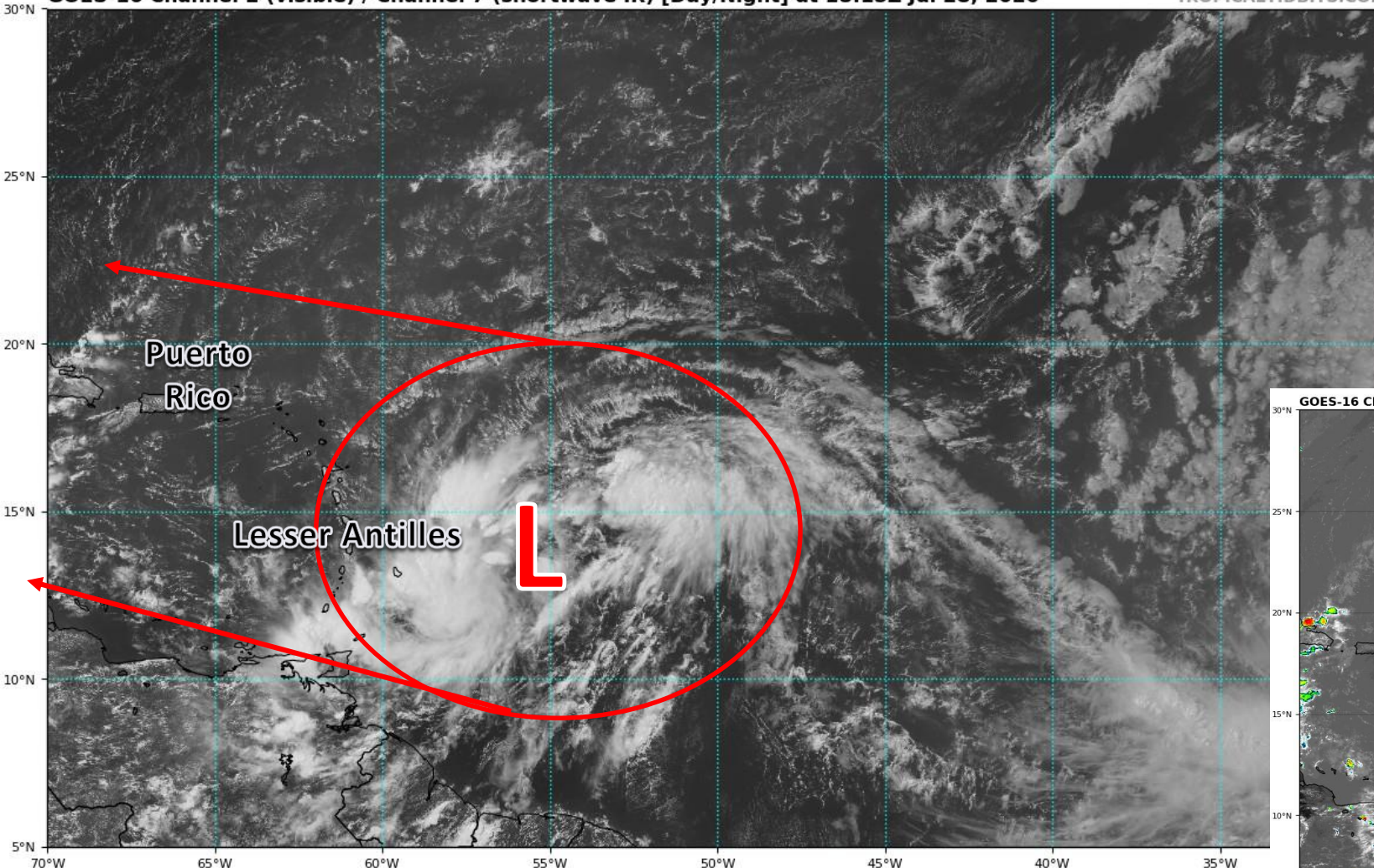


Satellite Imagery

Central Atlantic – PTC #9

GOES-16 Channel 2 (visible) / Channel 7 (shortwave IR) [Day/Night] at 18:15Z Jul 28, 2020

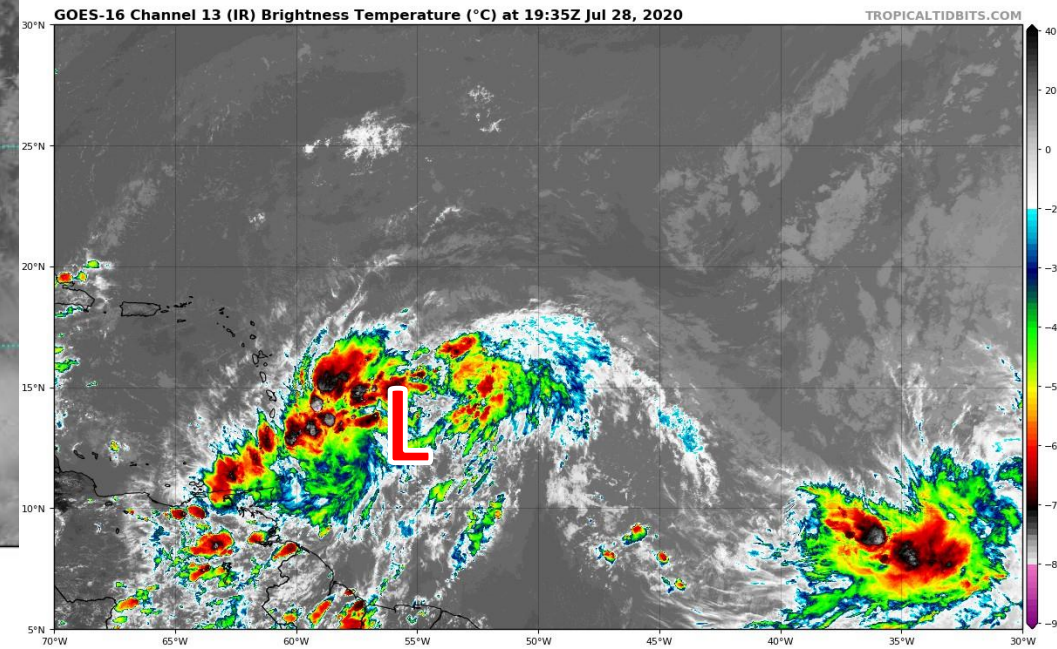
TROPICALTIDBITS.COM



The system continues to have a large, broad circulation. It continues to consolidate on the southwest side and a low pressure area has continued to form. However, Air Force Reserve Hurricane Hunters have not found a circulation well defined enough to designate it Tropical Storm Isaias.

GOES-16 Channel 13 (IR) Brightness Temperature (°C) at 19:35Z Jul 28, 2020

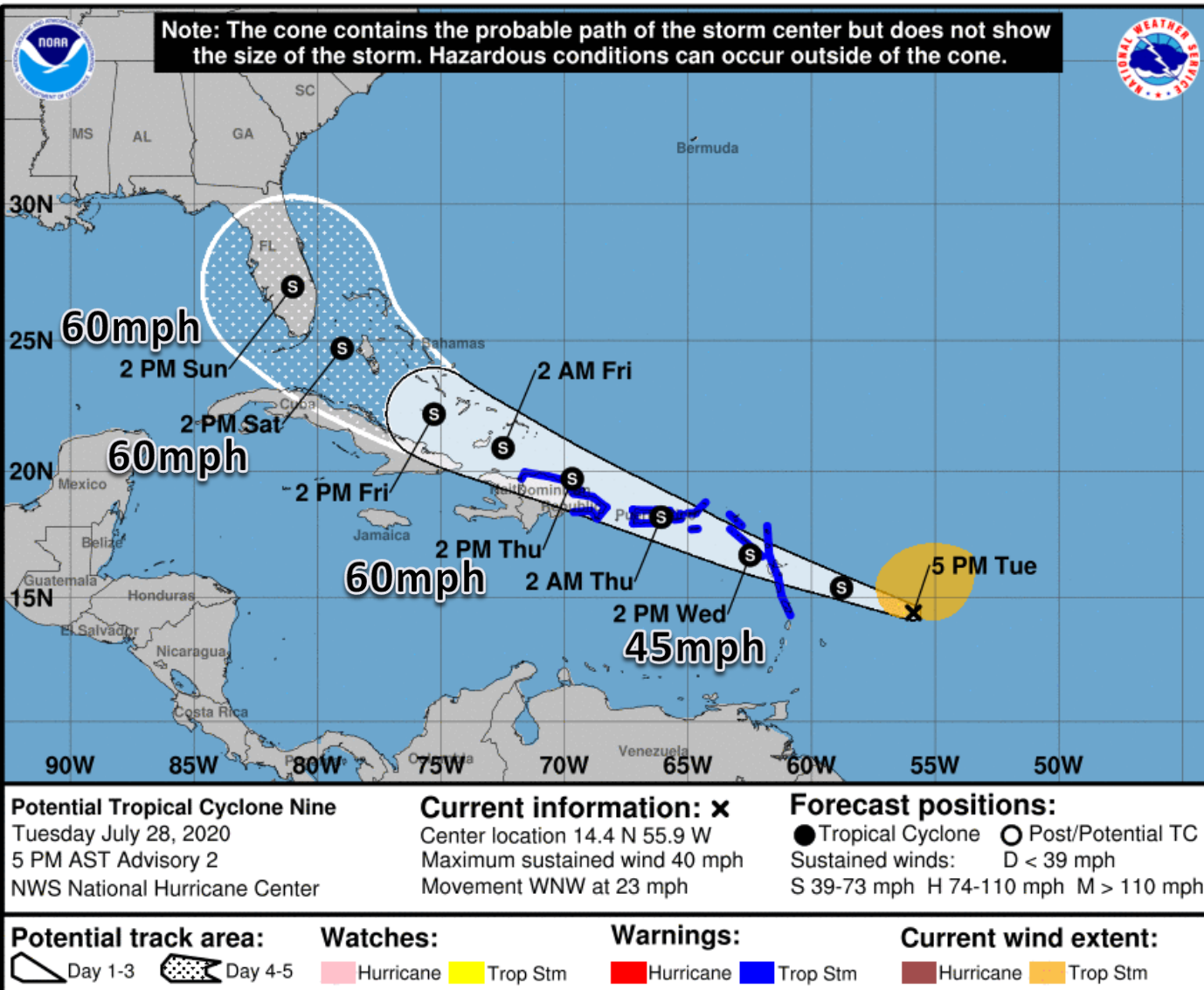
TROPICALTIDBITS.COM





Official Forecast Track

From the National Hurricane Center – PTC #9



- The center of Potential Tropical Cyclone Nine is estimated to be about 435 miles east of the Leeward Islands.
- Maximum sustained winds are around 40 mph.
- Potential Tropical Cyclone Nine is moving to the west at very fast 23 mph, and a west-northwest movement is expected over the next few days
- The system will near Puerto Rico in about 48 hours and Florida in 4 days.

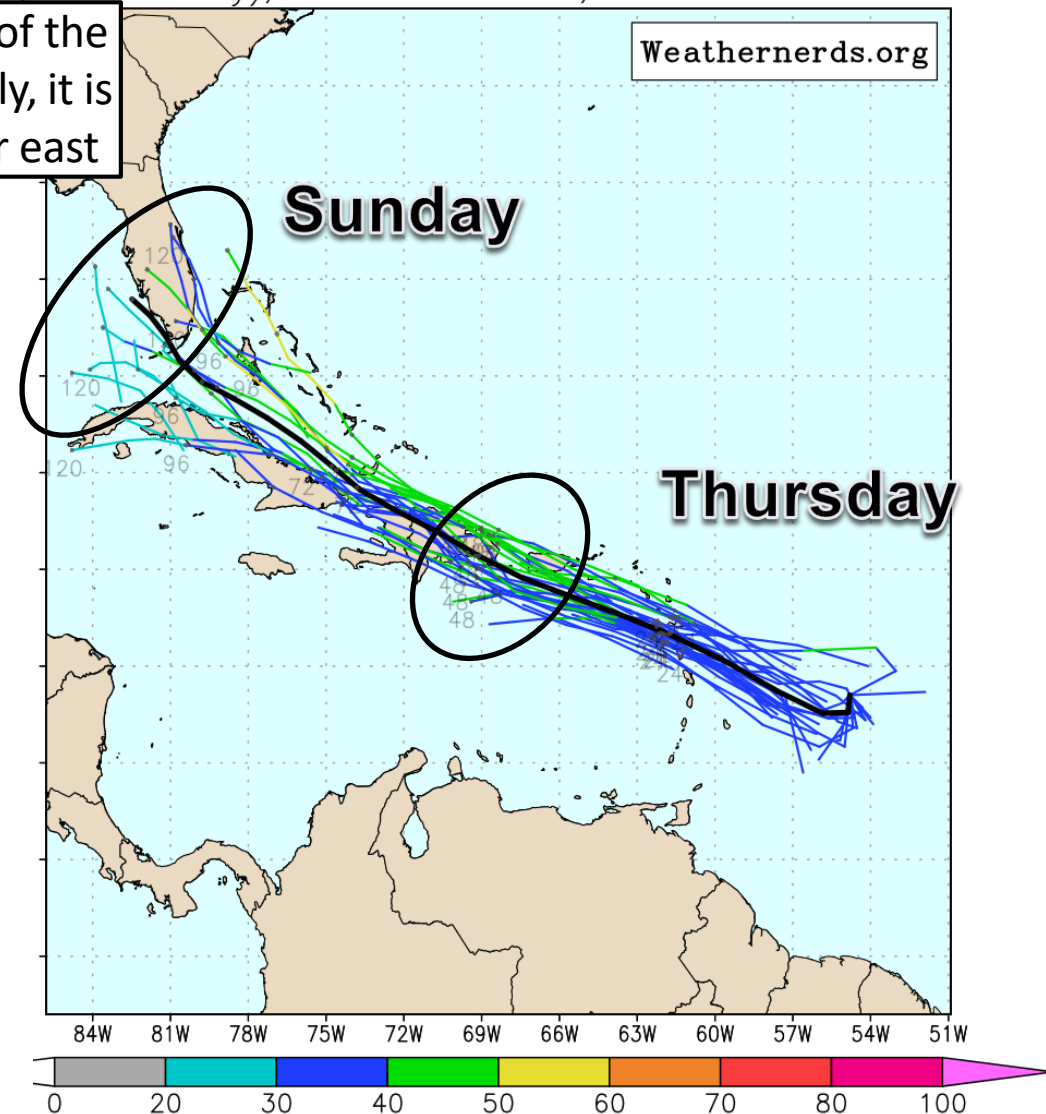
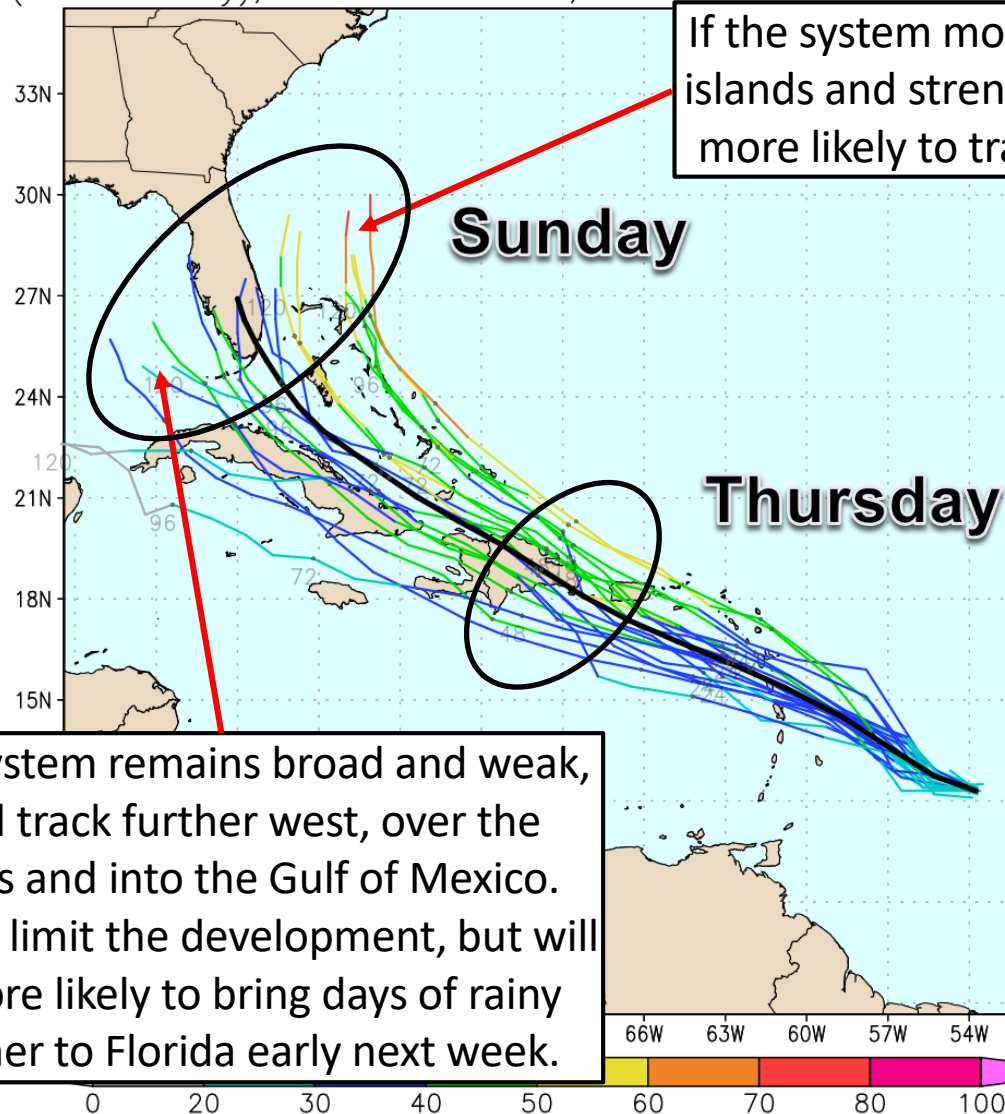


Model Forecast Tracks

Ensembles, Dynamical, and Statistical Models

****Until a more defined center forms, these models tracks are only guessing the starting location and are prone to more significant errors than usual****

GFS Ens. (0-120h only), init: 2020072812, AL09 Nine color = max wind (kt) 0-120h only), init: 2020072812, AL09 Nine color = max wind (kt)



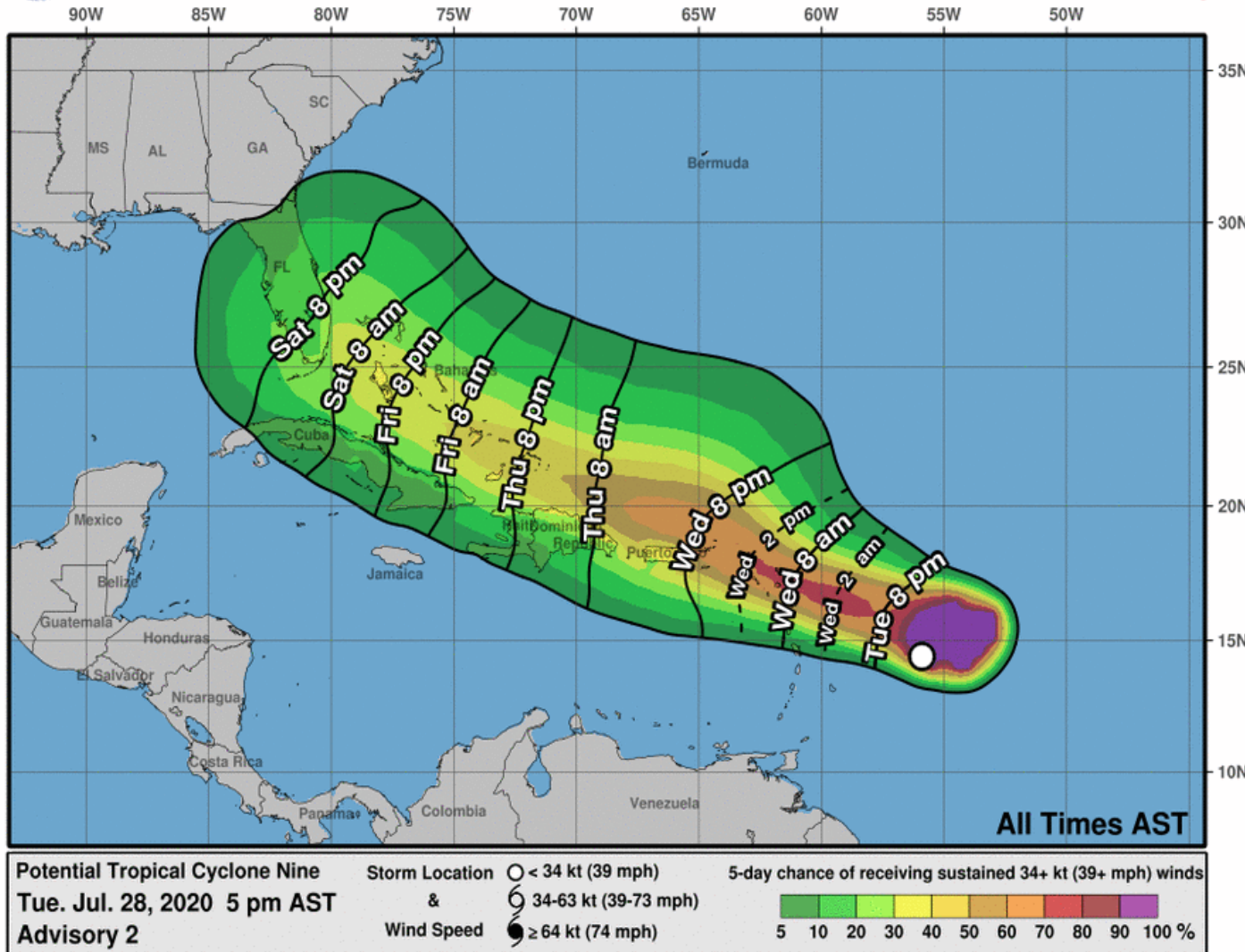


Time of Arrival & Wind Speed Probabilities

MOST LIKELY Time of Arrival of Tropical Storm Force Winds (>39 mph)



Most Likely Arrival Time of Tropical-Storm-Force Winds



Key West: 18%
Miami: 21%
Naples: 22%
West Palm Beach: 29%
Ft. Lauderdale: 31%
Ft. Pierce: 25%
Daytona Beach: 11%
Orlando: 13%
Tampa:
Jacksonville: 6%

The most likely chance of tropical storm force winds starting will be Saturday Night in Southeast Florida, but could arrive AS EARLY AS Friday night if the track speeds up.



Key Messages

From the National Hurricane Center



Key Messages for Potential Tropical Cyclone Nine

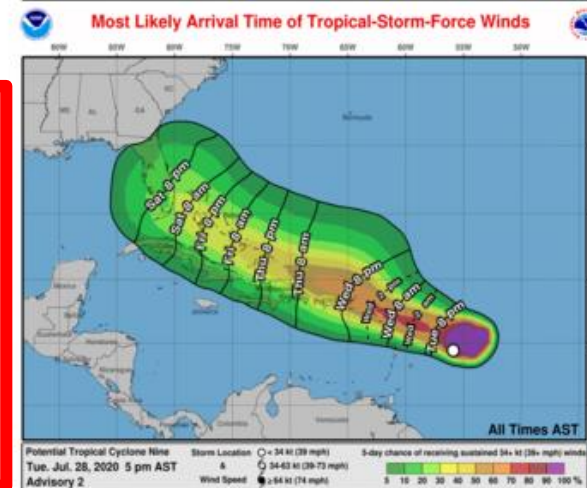
Advisory 2: 5:00 PM AST Tue Jul 28, 2020



1. Potential Tropical Cyclone Nine will produce heavy rains and potentially life-threatening flash flooding and mudslides across the northern Leeward Islands, the Virgin Islands, Puerto Rico, and the Dominican Republic.

2. Tropical storm conditions are likely across portions of the Leeward Islands, the Virgin Islands, Puerto Rico, and portions of the Dominican Republic beginning Wednesday and spreading westward through Thursday. Tropical Storm Warnings are in effect for these areas. Do not focus on the details of the track forecast, as rainfall and wind hazards will extend far from the center of the system.

3. The details of the long-range track and intensity forecasts are more uncertain than usual since the system does not have a well-defined center and it could move over portions of the Greater Antilles later this week. However, this system could bring some rainfall and wind impacts to portions of Hispaniola, Cuba, the Bahamas, and Florida by the end of the week. Interests there should monitor its progress and updates to the forecast over the next few days.



For more information go to hurricanes.gov



Overall Summary

Potential Tropical Cyclone Nine (Formerly Invest 92L)

- Hurricane Hunters have been investigating the system this afternoon and have not found a well-defined circulation. However, the system continues to gradually organize and a tropical storm is still forecast to form tonight or Wednesday (90% chance).
- The next name on the list is Isaias (ees-ah-EE-ahs).
- The system will continue to move west and west-northwest over the northeastern Caribbean through the next day or so, arriving in Puerto Rico Wednesday afternoon, the Bahamas by Friday, and South Florida by Sunday.
- The track near the mountainous islands of the Greater Antilles and the potential for unfavorable wind shear this weekend in the Bahamas makes the intensity forecast uncertain at the moment.
- As the system turns northward near Florida its forward speed may decrease.
- Changes in the track and intensity forecast should be expected over the next few advisories as the system develops.

Florida Outlook:

- **PTC #9 poses a direct threat to Florida starting Saturday night. It is too early to determine exact impacts, but heavy rainfall and gusty winds are becoming increasingly likely in the Florida Peninsula late this weekend and early next week.**
- All of the Florida Peninsula is in the 5-day forecast cone. No watches or warnings are in effect.

The next full briefing packet will be issued late Wednesday morning with the 11 AM advisory. For the latest information on the tropics, please visit the National Hurricane Center website at www.hurricanes.gov.



TROPICAL UPDATE



Created by:

Michael Spagnolo, Deputy State Meteorologist

Michael.Spagnolo@em.myflorida.com

State Meteorological Support Unit

Florida Division of Emergency Management

Users wishing to subscribe (approval pending) to this distribution list, register at:

https://public.govdelivery.com/accounts/FLDEM/subscriber/new?topic_id=SERT_Met_Tropics.

Other reports available for subscription are available at:

<https://public.govdelivery.com/accounts/FLDEM/subscriber/new?preferences=true>