



TROPICAL UPDATE



10:30 AM EDT

Monday, July 27, 2020

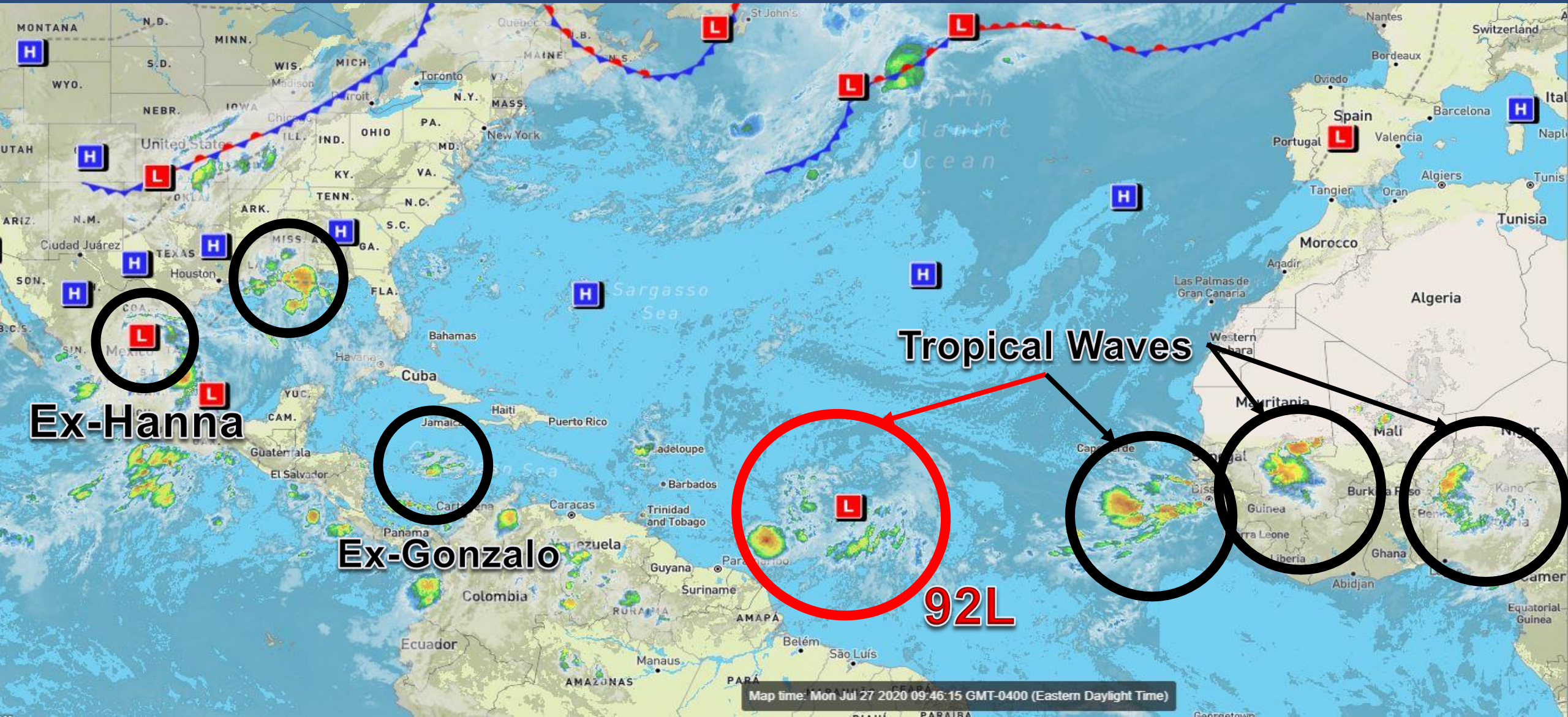
Invest 92L (90%)

This update is intended for government and emergency response officials, and is provided for informational and situational awareness purposes only. Forecast conditions are subject to change based on a variety of environmental factors. For additional information, or for any life safety concerns with an active weather event please contact your County Emergency Management or Public Safety Office, local National Weather Service forecast office, or visit the National Hurricane Center website at www.hurricanes.gov.



Atlantic Basin Satellite Image

Chance of development: — None — Low — Medium — High





Tropical Weather Outlook

Possible Area of Development During the Next 5 Days ([LINK](#))



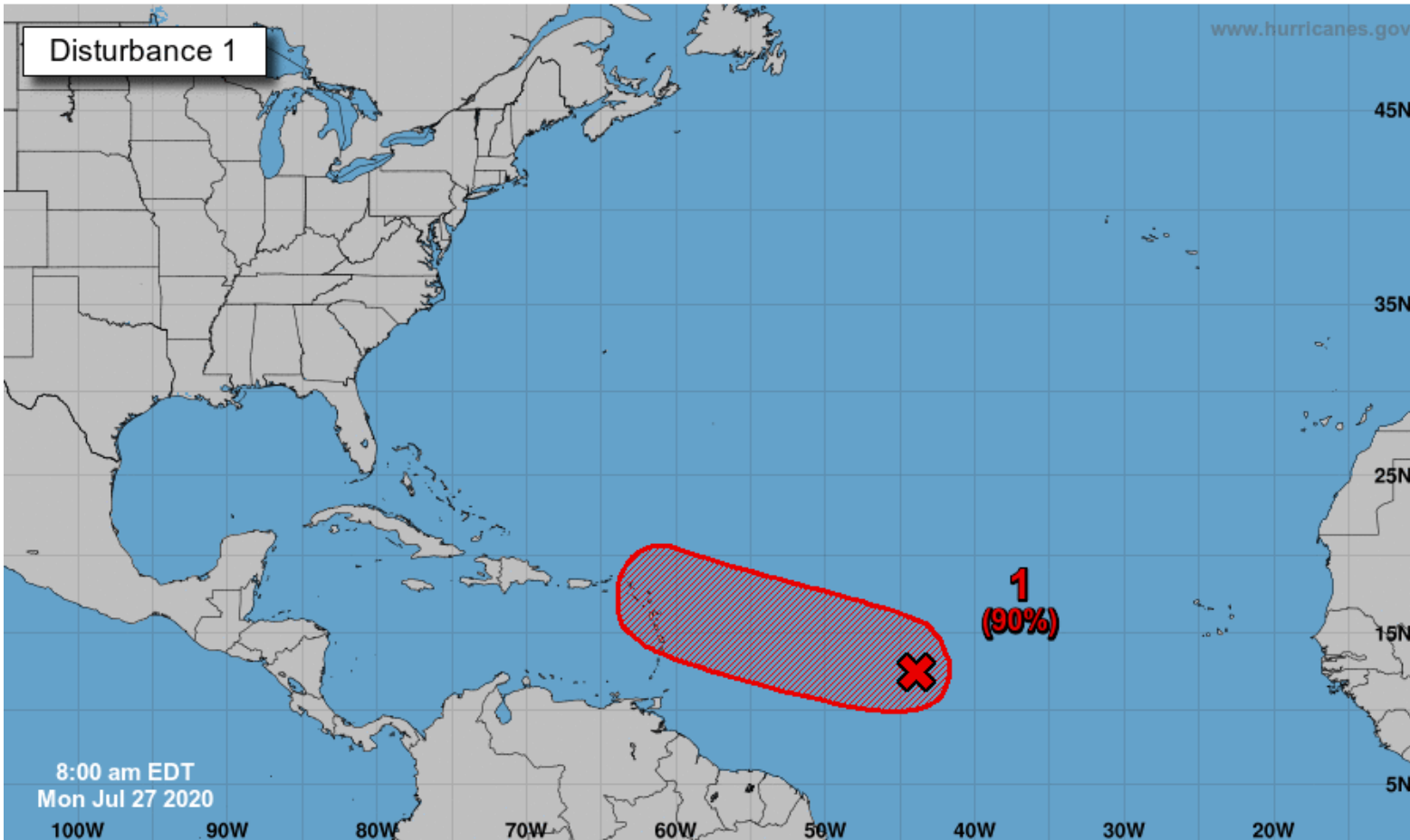
Five-Day Graphical Tropical Weather Outlook

National Hurricane Center Miami, Florida



www.hurricanes.gov

Disturbance 1



Shower activity associated with a broad area of low pressure located a little more than 1000 miles east of the Windward Islands has become a little less organized since last night.

However, environmental conditions are still expected to become more favorable for development in a day or two and a **tropical depression or tropical storm will likely form within the next couple of days.**

The system is forecast to move westward to west-northwestward at 15 to 20 mph and could begin to affect portions of the Lesser Antilles on Wednesday or Wednesday night.

***Formation chance through 48 hours...high...80%**

***Formation chance through 5 days...high...90%**

Current Disturbances and Five-Day Cyclone Formation Chance:
 Tropical or Sub-Tropical Cyclone:
 < 40% 40-60% > 60%
 Depression Storm Hurricane
 Post-Tropical Cyclone or Remnants

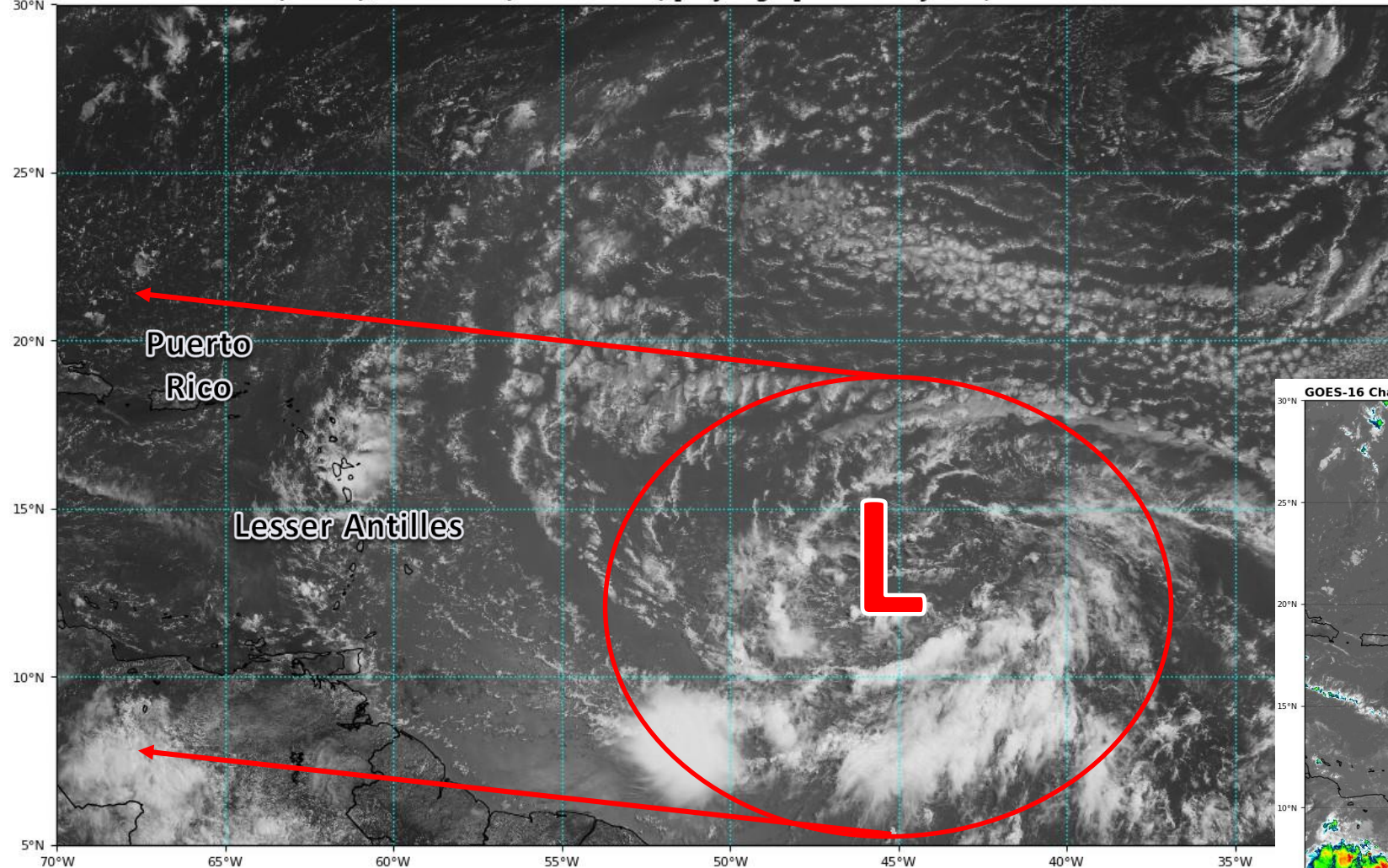


Satellite Imagery

Central Atlantic – Invest 92L

GOES-16 Channel 2 (visible) / Channel 7 (shortwave IR) [Day/Night] at 13:35Z Jul 27, 2020

TROPICALTIDBITS.COM



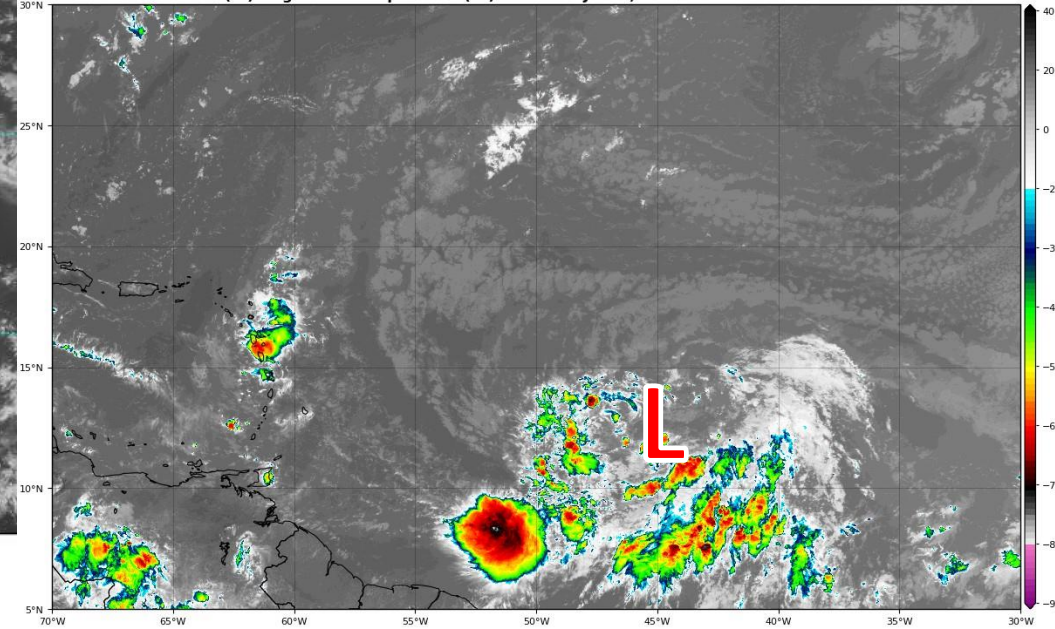
92L continues to have a large, broad circulation- several hundred miles across.

Thunderstorms are only developing across the southern half of the system.

The system is not showing signs of development today, and will be slow to consolidate over the next few days.

GOES-16 Channel 13 (IR) Brightness Temperature (°C) at 13:35Z Jul 27, 2020

TROPICALTIDBITS.COM



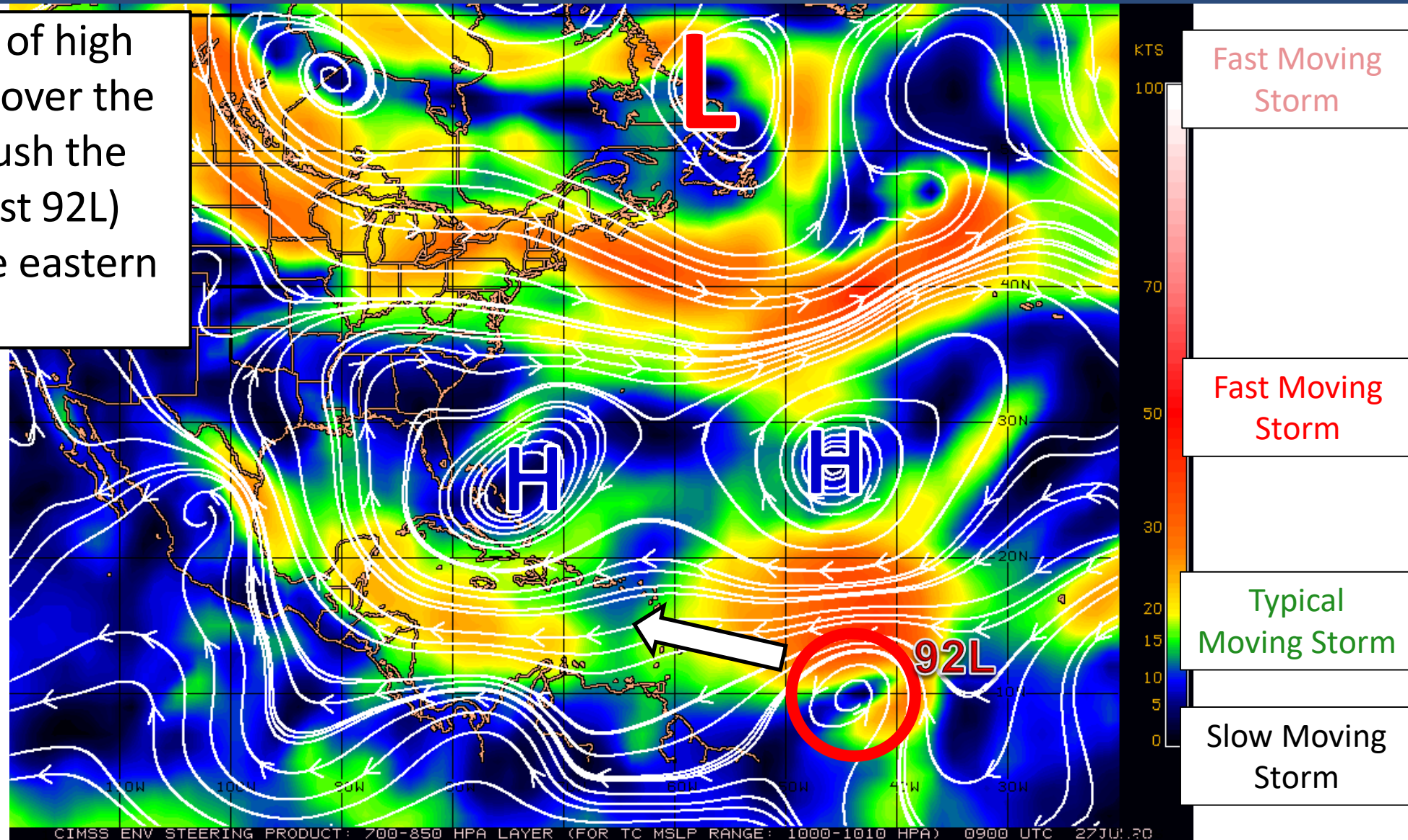


Steering Currents

What is moving the system?

Color denotes the movement speed through the atmosphere and thin white lines denote direction. Tightly clustered white lines represent faster movement as well.

A large, strong area of high pressure is centered over the Atlantic. This will push the tropical wave (Invest 92L) westward toward the eastern Caribbean.



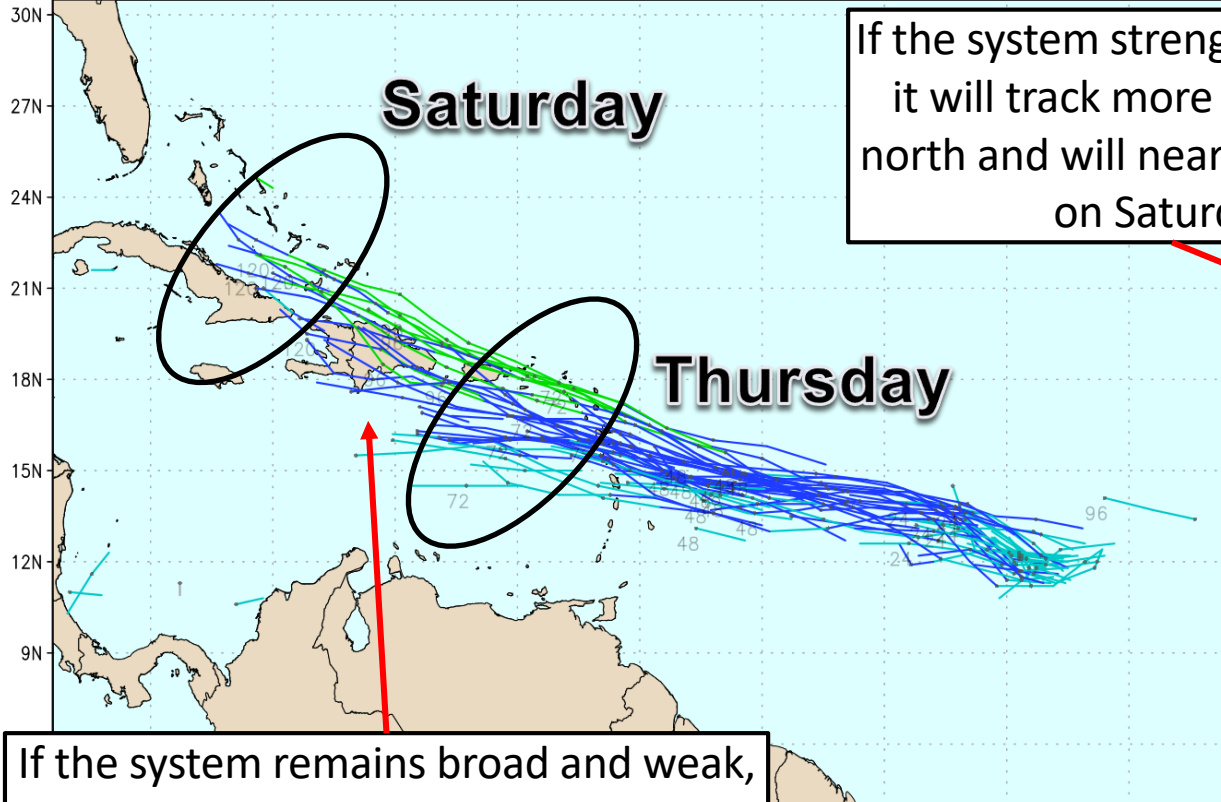


Model Forecast Tracks

Ensembles, Dynamical, and Statistical Models

****Until a more defined center forms, these models tracks are only guessing the starting location and are prone to more significant errors than usual****

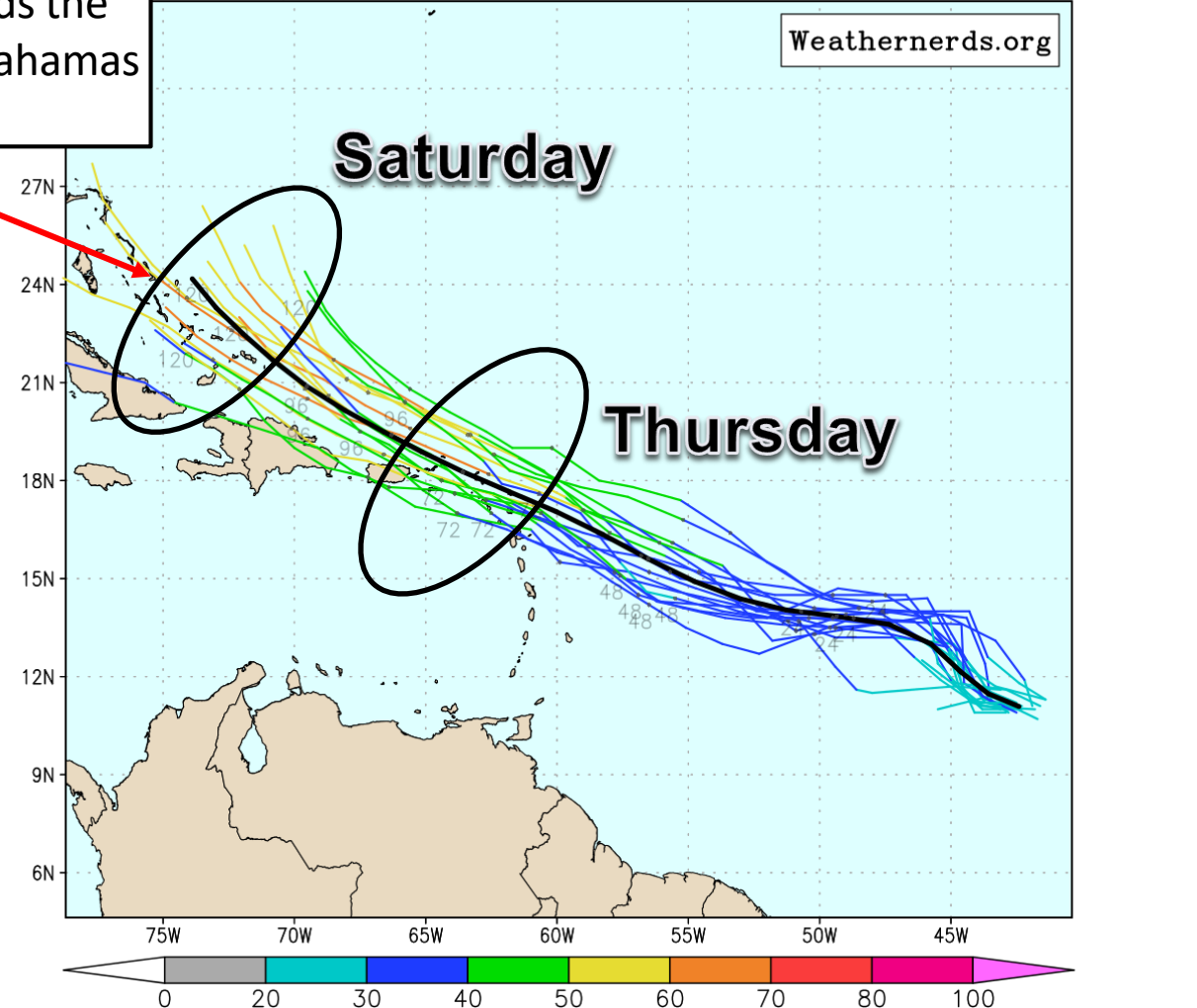
ECMWF Ens. (0-120h only), init: 2020072700, AL92 Invest color = max wind (kt)



If the system strengthens quickly, it will track more towards the north and will near the Bahamas on Saturday.

If the system remains broad and weak, it will track further south through the Caribbean and possibly over the islands. This will limit the development, but will be more likely to bring rainy weather to Florida early next week.

120h only), init: 2020072706, AL92 Invest color = max wind (kt)



Weathernerds.org



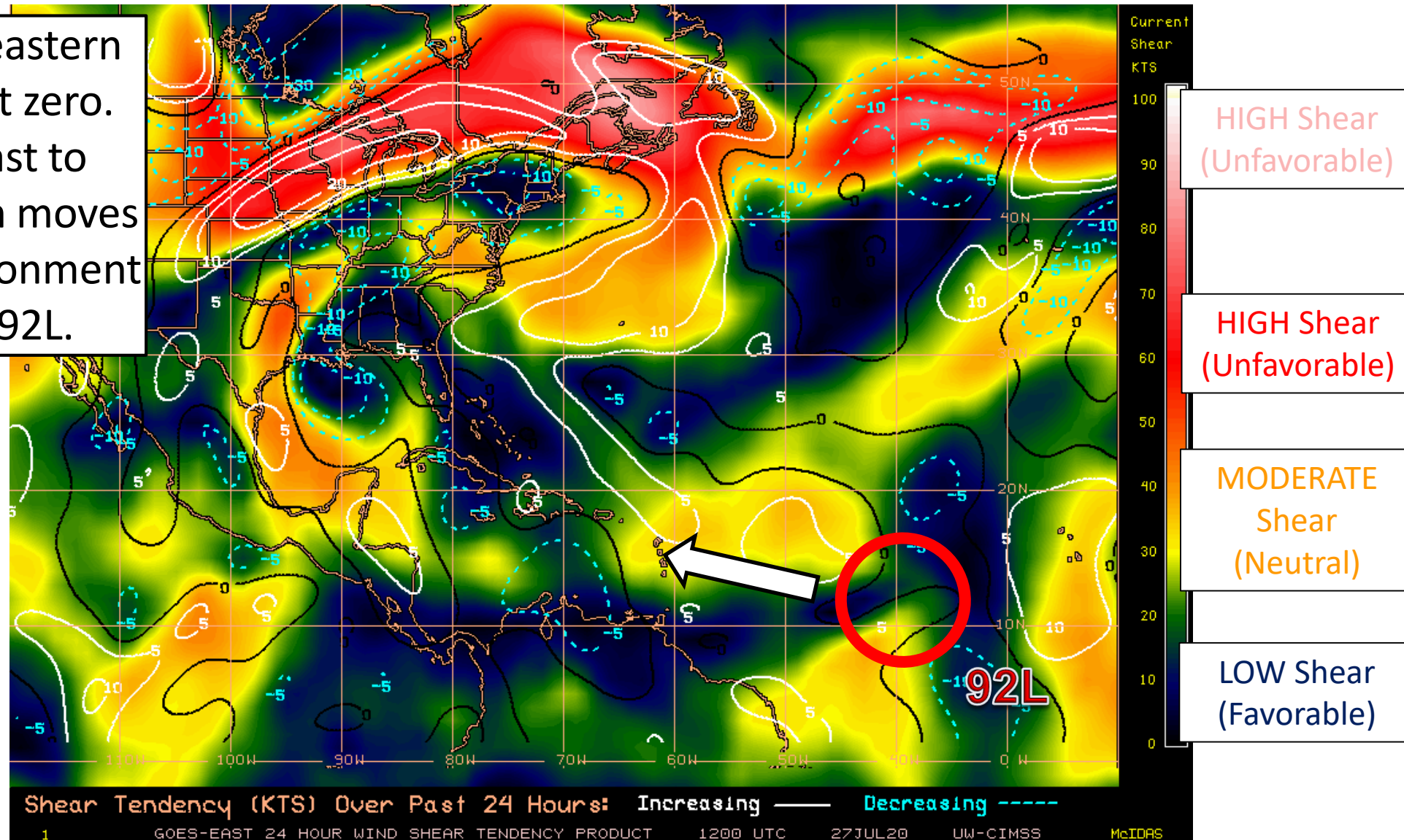
Wind Shear

Is the environment favorable for the system?

Color denotes the amount of wind shear and the lines denote how it have changed over the last 24 hours (dotted lines show decreasing shear and solid lines show increasing).

Wind shear over the eastern Atlantic is low, but not zero.

Wind shear is forecast to decrease as the system moves west, making the environment more favorable for 92L.

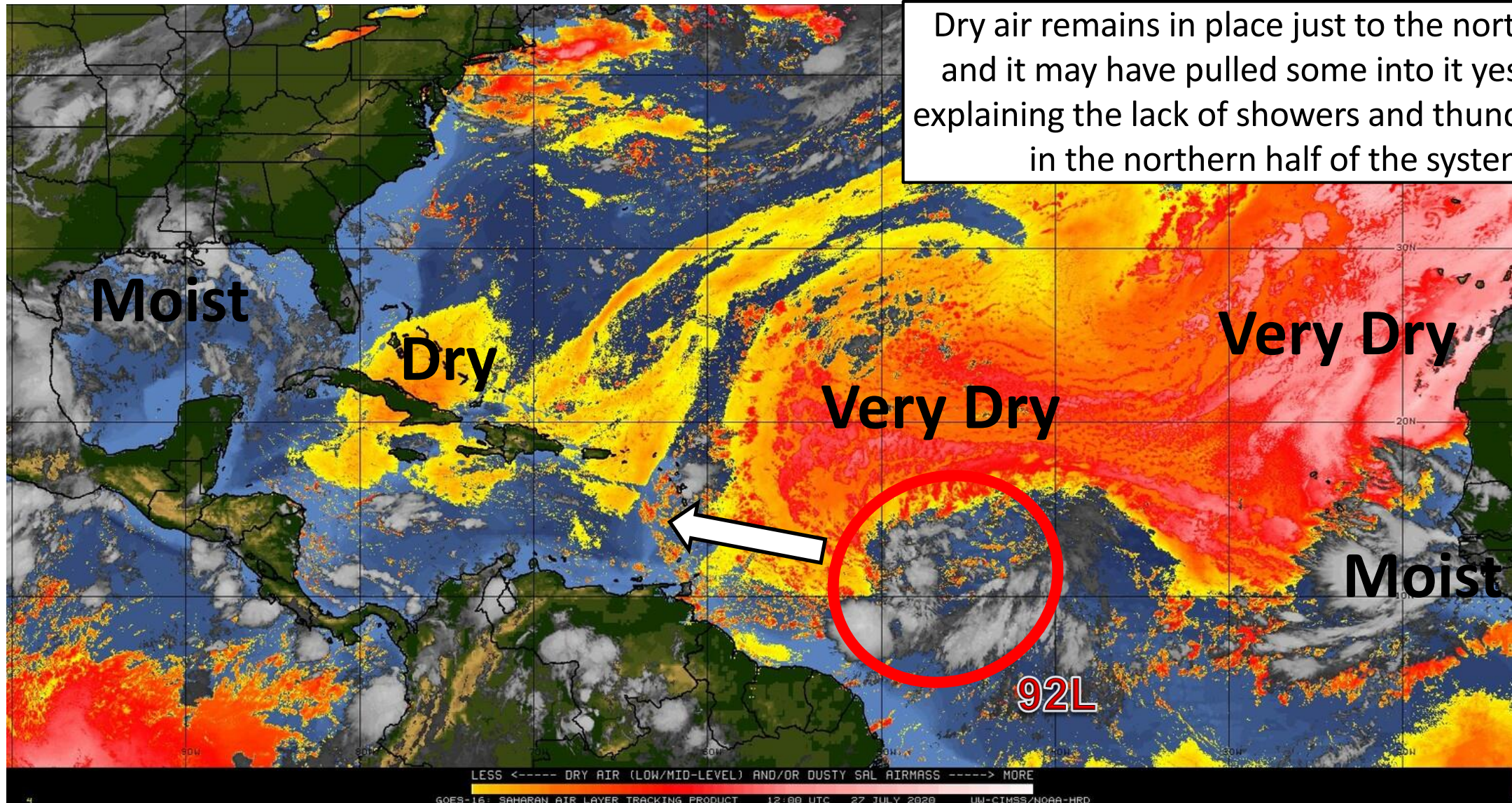




Dry Air & Saharan Dust

Is the environment favorable for the system?

Color denotes concentration of Saharan Dust or dry, stable air.





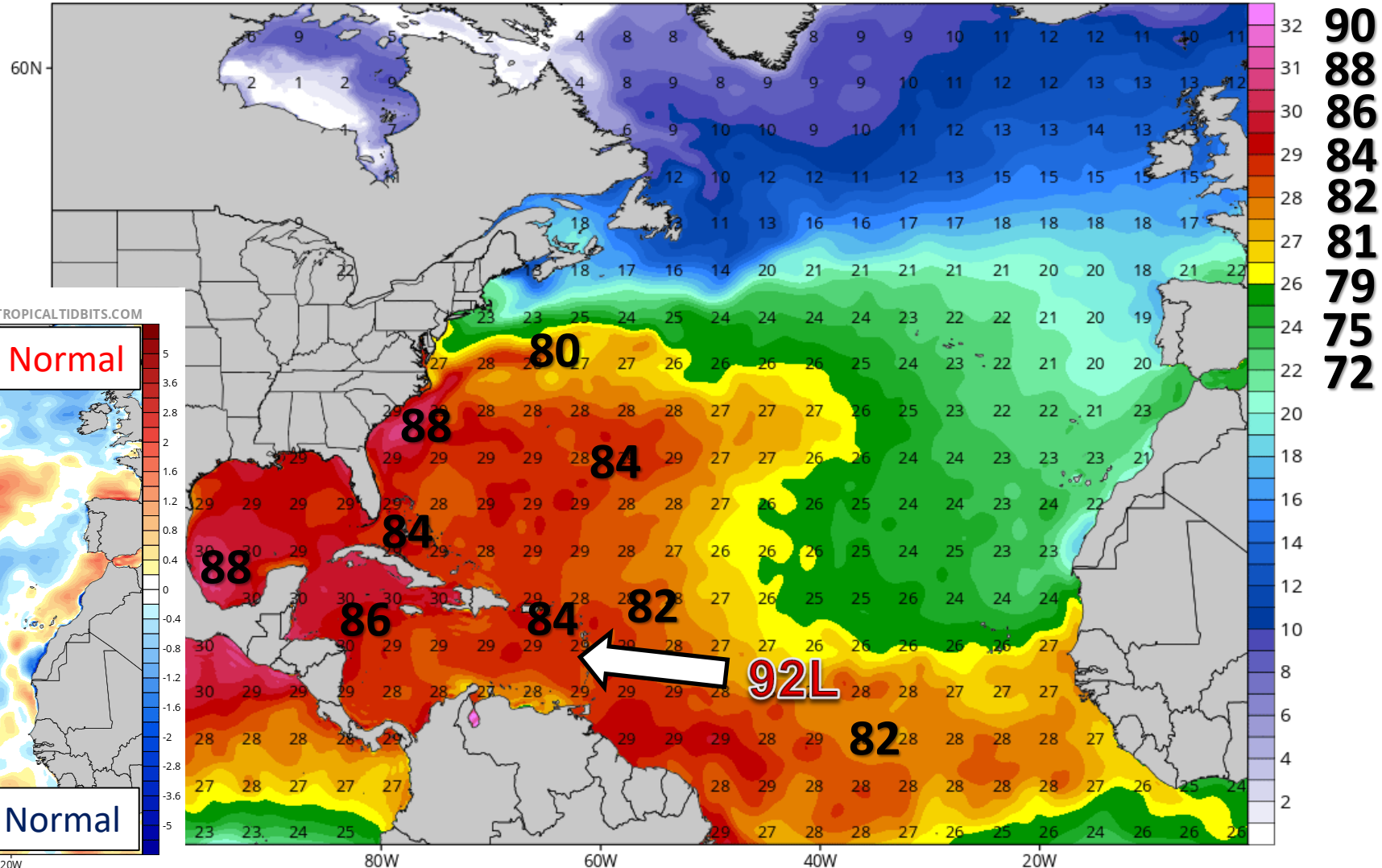
Sea Surface Temperatures & Anomalies

Is the ocean favorable for the system?

Water temperatures are supportive for tropical development across the entire Atlantic basin, and will continue to warm as 92L moves west. Water temperatures are above normal across much of the Atlantic.

CDAS Sea Surface Temperature (°C)

Analysis Time: 06z Jul 27 2020



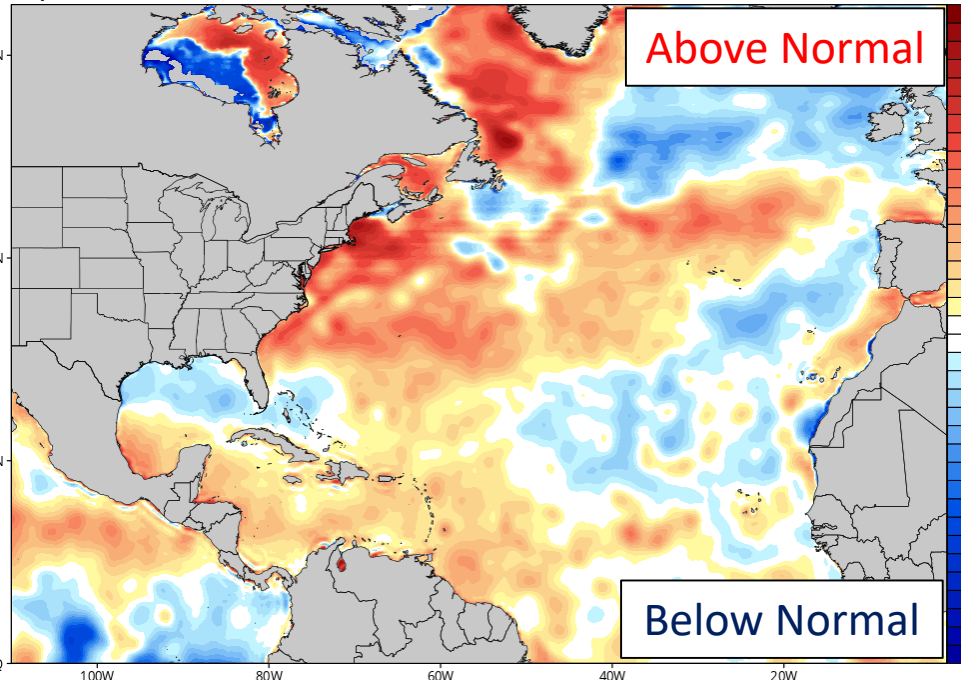
CDAS Sea Surface Temperature Anomaly (°C) (based on CFSR 1981-2010 Climatology)

Analysis Time: 06z Jul 27 2020

TROPICALTIDBITS.COM

Above Normal

Below Normal





Overall Summary

Invest 92L (Eastern Atlantic Tropical Wave)

- A tropical wave located about halfway between the Caribbean and Africa remains disorganized with a large, but broad circulation.
- The system will continue to move westward over the tropical Atlantic through the next couple of days, arriving in the Lesser Antilles Wednesday or Wednesday night.
- Environmental conditions are forecast to become more conducive for development, and gradual organization is forecast. A tropical depression or tropical storm is likely to form tomorrow or Wednesday.
- The National Hurricane Center gives this system an 80% (high) chance of formation during the 48 hours, and a 90% (high) chance over the next 5 days.
- The strength of the system will likely dictate the track this weekend, either turning northwest into the Bahamas or remaining in the Caribbean or across the Greater Antilles.
- The next name on the list is Isaias (ees-ah-EE-ahs).

Florida Outlook:

- **92L does not pose a threat to Florida through at least the next 5 days, but should continue to be monitored.**

The next briefing packet will be issued late Tuesday morning. For the latest information on the tropics, please visit the National Hurricane Center website at www.hurricanes.gov. Daily Weather Packets are published each day in WebEOC Info Message #3518.



TROPICAL UPDATE



Created by:

Michael Spagnolo, Deputy State Meteorologist

Michael.Spagnolo@em.myflorida.com

State Meteorological Support Unit

Florida Division of Emergency Management

Users wishing to subscribe (approval pending) to this distribution list, register at:

https://public.govdelivery.com/accounts/FLDEM/subscriber/new?topic_id=SERT_Met_Tropics.

Other reports available for subscription are available at:

<https://public.govdelivery.com/accounts/FLDEM/subscriber/new?preferences=true>