



TROPICAL UPDATE



10:00 AM EDT

Sunday, July 26, 2020

Tropical Storm Hanna &

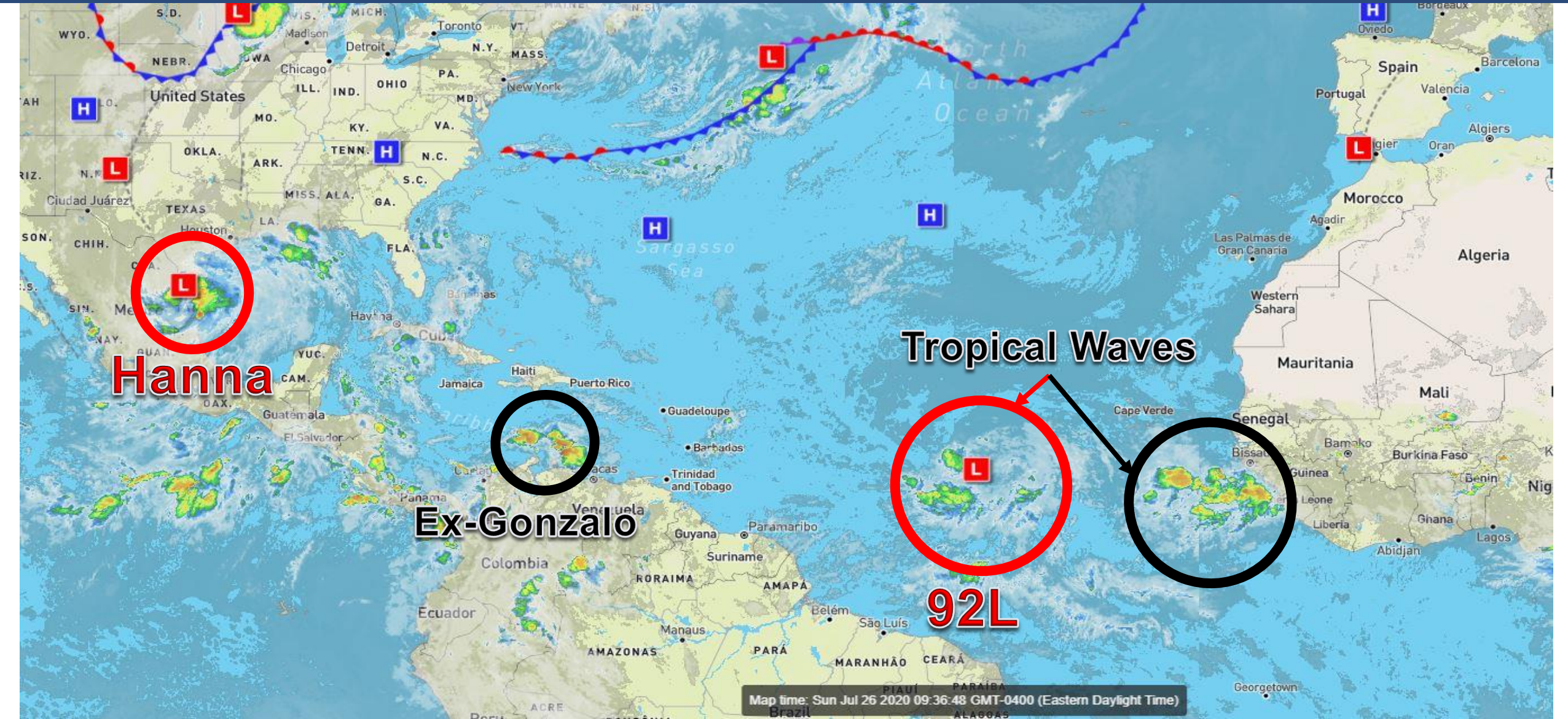
Invest 92L (90%)

This update is intended for government and emergency response officials, and is provided for informational and situational awareness purposes only. Forecast conditions are subject to change based on a variety of environmental factors. For additional information, or for any life safety concerns with an active weather event please contact your County Emergency Management or Public Safety Office, local National Weather Service forecast office, or visit the National Hurricane Center website at www.hurricanes.gov.



Atlantic Basin Satellite Image

Chance of development: — None — Low — Medium — High





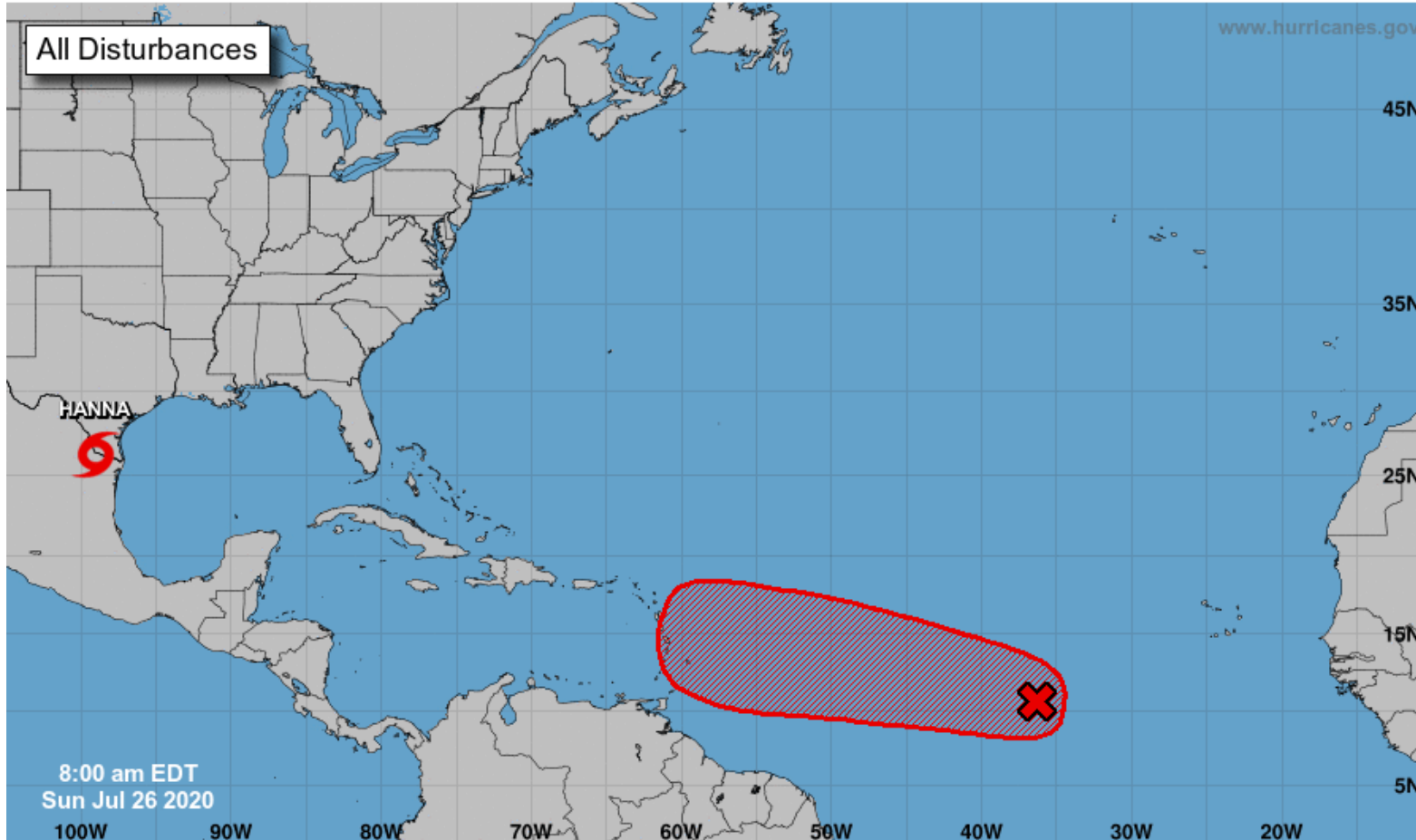
Tropical Weather Outlook

Possible Areas of Development During the Next 5 Days ([LINK](#))



Five-Day Graphical Tropical Weather Outlook

National Hurricane Center Miami, Florida



A broad area of low pressure associated with a tropical wave is located about 1000 miles west-southwest of the Cabo Verde Islands.

This system is producing a wide area of disorganized showers and thunderstorms as it moves westward around 20 mph across the tropical Atlantic.

Environmental conditions are forecast to be conducive for development and a tropical depression is likely to form within the next few days as the system nears the Lesser Antilles.

***Formation chance through 48hrs...medium...60%**

***Formation chance through 5 days...high...90%**

Current Disturbances and Five-Day Cyclone Formation Chance:
 Tropical or Sub-Tropical Cyclone: ○ Depression ○ Storm ○ Hurricane
 ⊗ Post-Tropical Cyclone or Remnants
 ✕ < 40% ✕ 40-60% ✕ > 60%

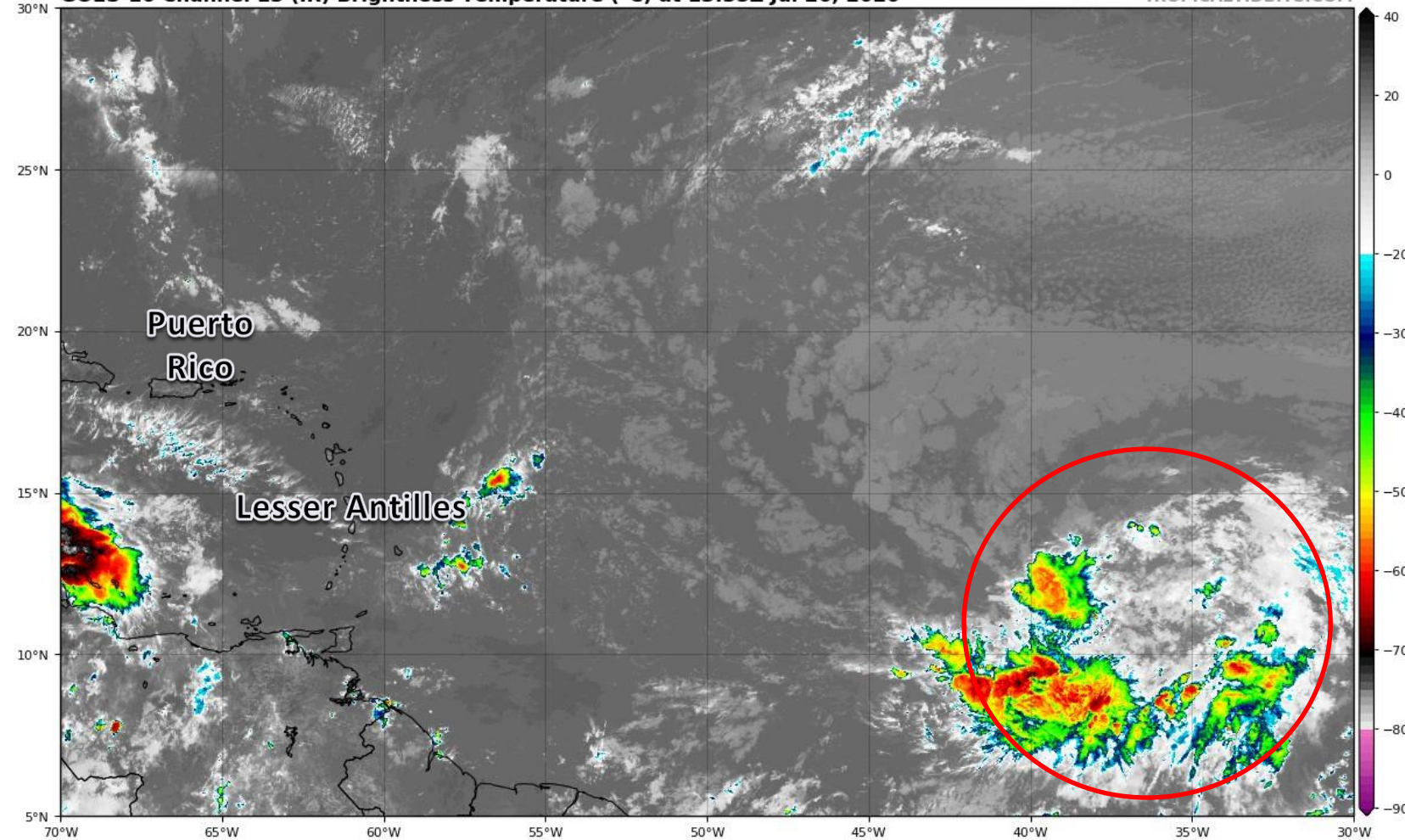


Satellite Imagery

Central Atlantic – Invest 92L

GOES-16 Channel 13 (IR) Brightness Temperature (°C) at 13:35Z Jul 26, 2020

TROPICALTIDBITS.COM

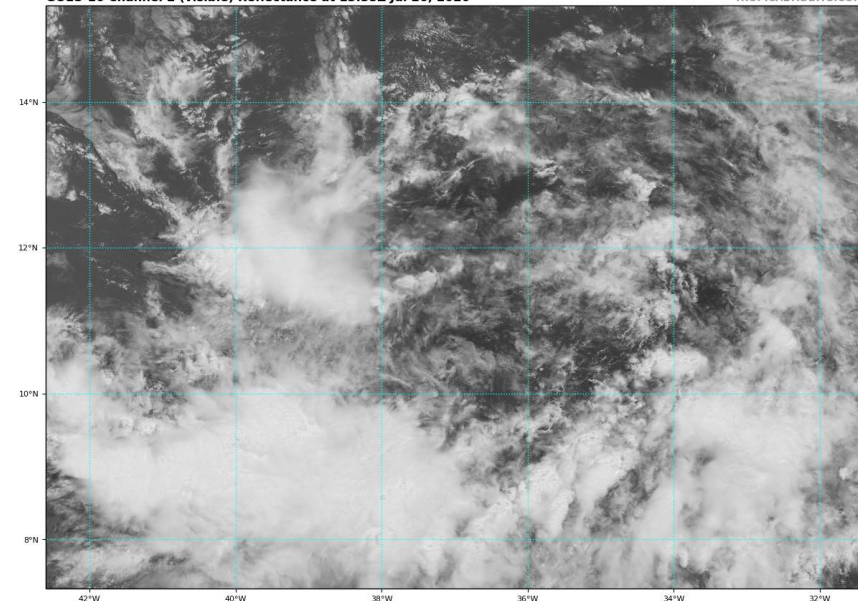


92L remains rather disorganized.

The system is very large, and will take time to consolidate and organize into a tropical depression. Conditions are expected to become more favorable as the system moves westward over the tropical Atlantic.

GOES-16 Channel 2 (visible) Reflectance at 13:35Z Jul 26, 2020

TROPICALTIDBITS.COM



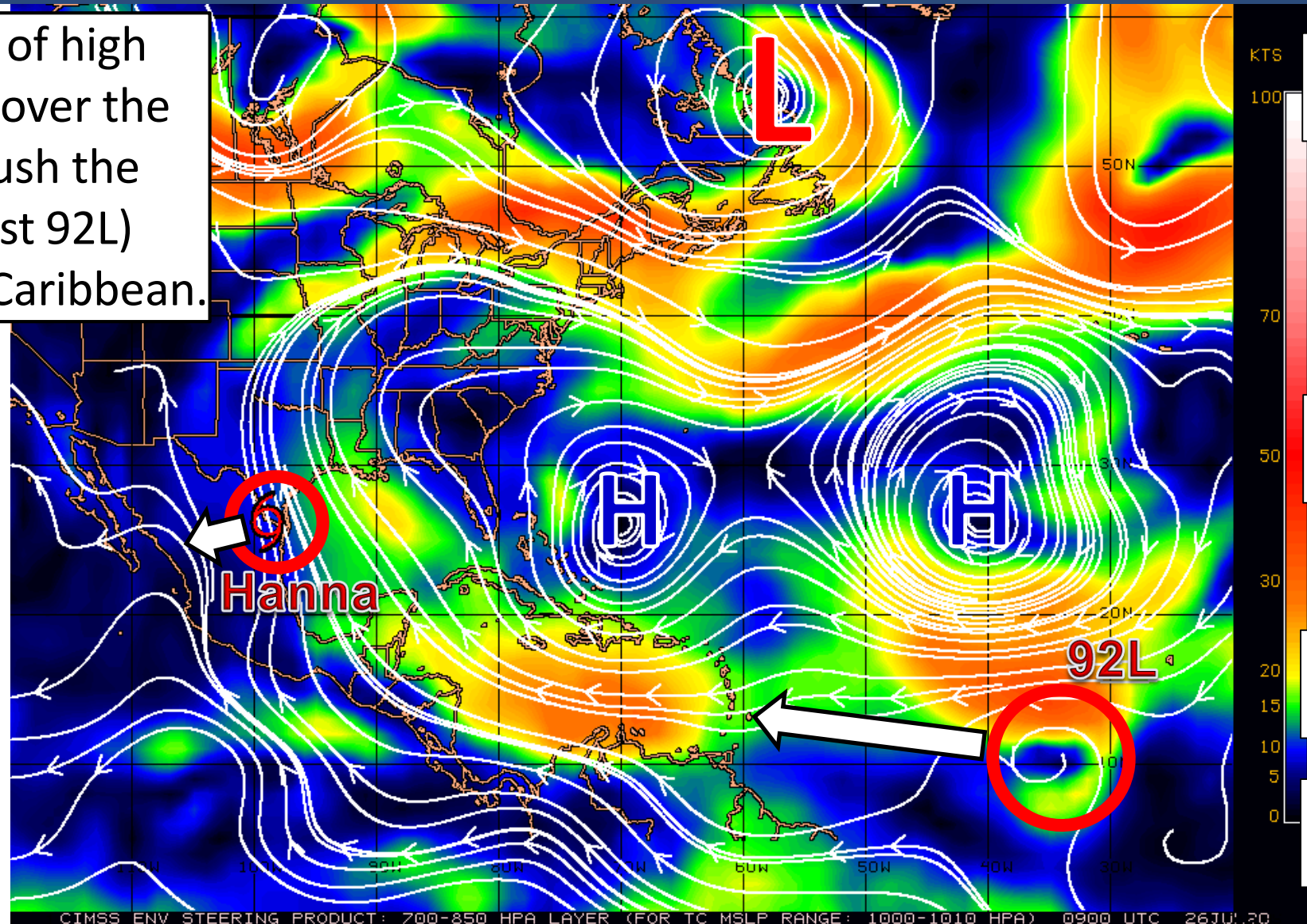


Steering Currents

What is moving the system?

Color denotes the movement speed through the atmosphere and thin white lines denote direction. Tightly clustered white lines represent faster movement as well.

A large, strong area of high pressure is centered over the Atlantic. This will push the tropical wave (Invest 92L) westward toward the Caribbean.

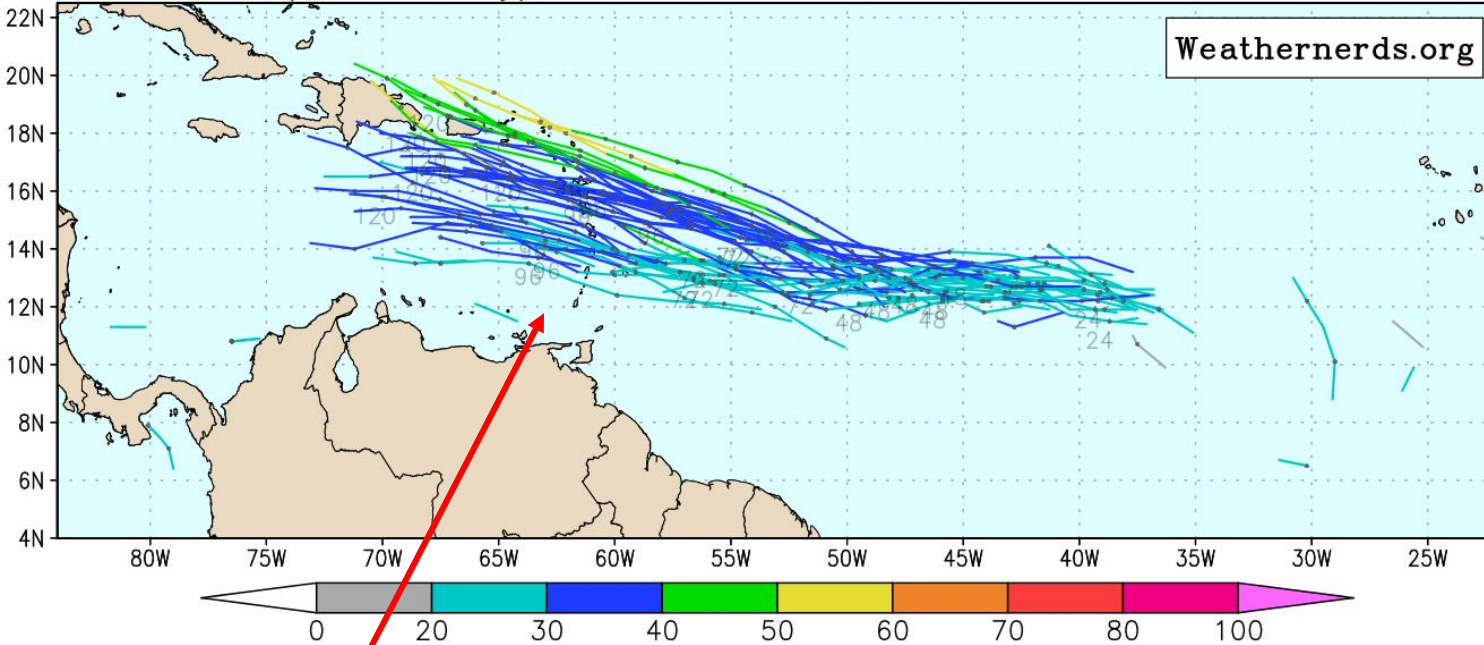




Model Forecast Tracks

Ensembles, Dynamical, and Statistical Models

ECMWF Ens. (0-120h only), init: 2020072600, AL92 Invest color = max wind (kt)

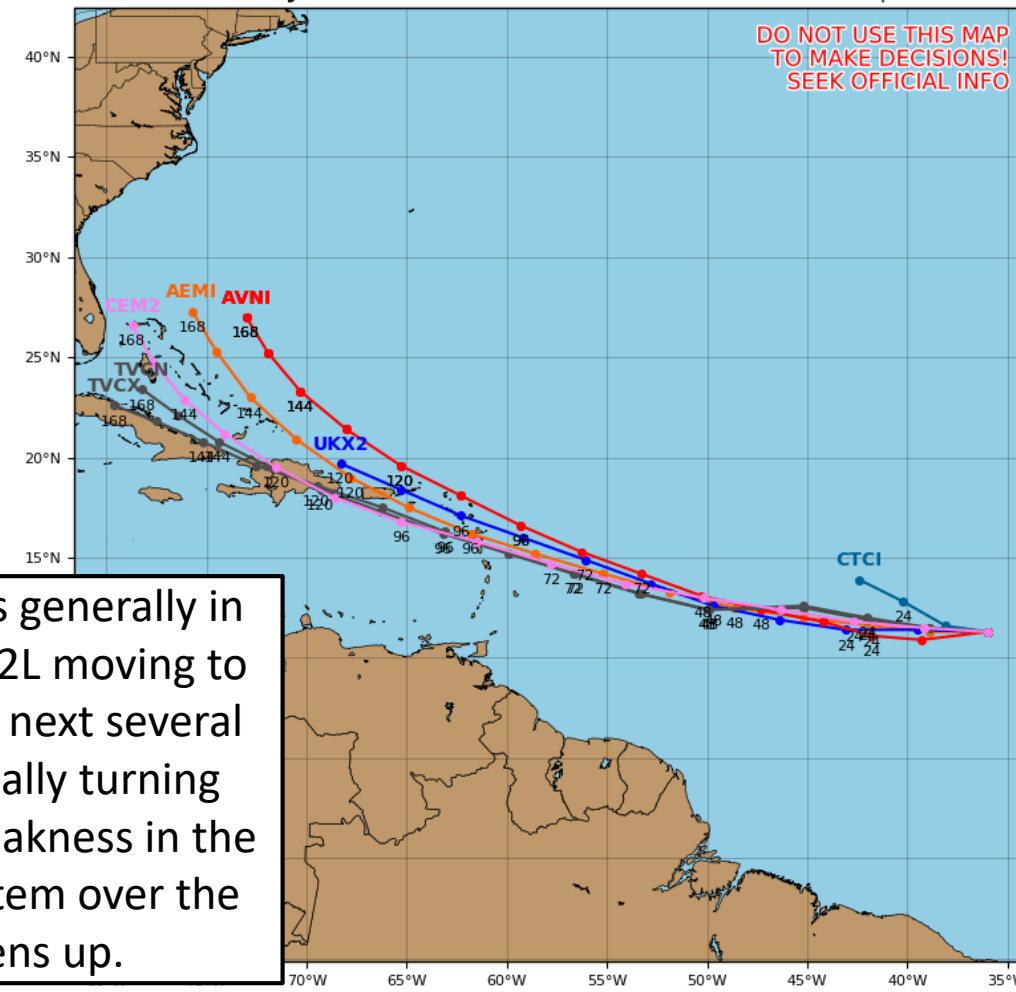


The system should reach the Caribbean in about 4 days. A stronger system will tend to be on the northern side of the guidance.

Invest 92L Model Track Guidance

Initialized at 12z Jul 26 2020

Levi Cowan - tropicaltidbits.com



Model guidance is generally in agreement with 92L moving to the west over the next several days, then gradually turning northward as a weakness in the high pressure system over the Atlantic opens up.

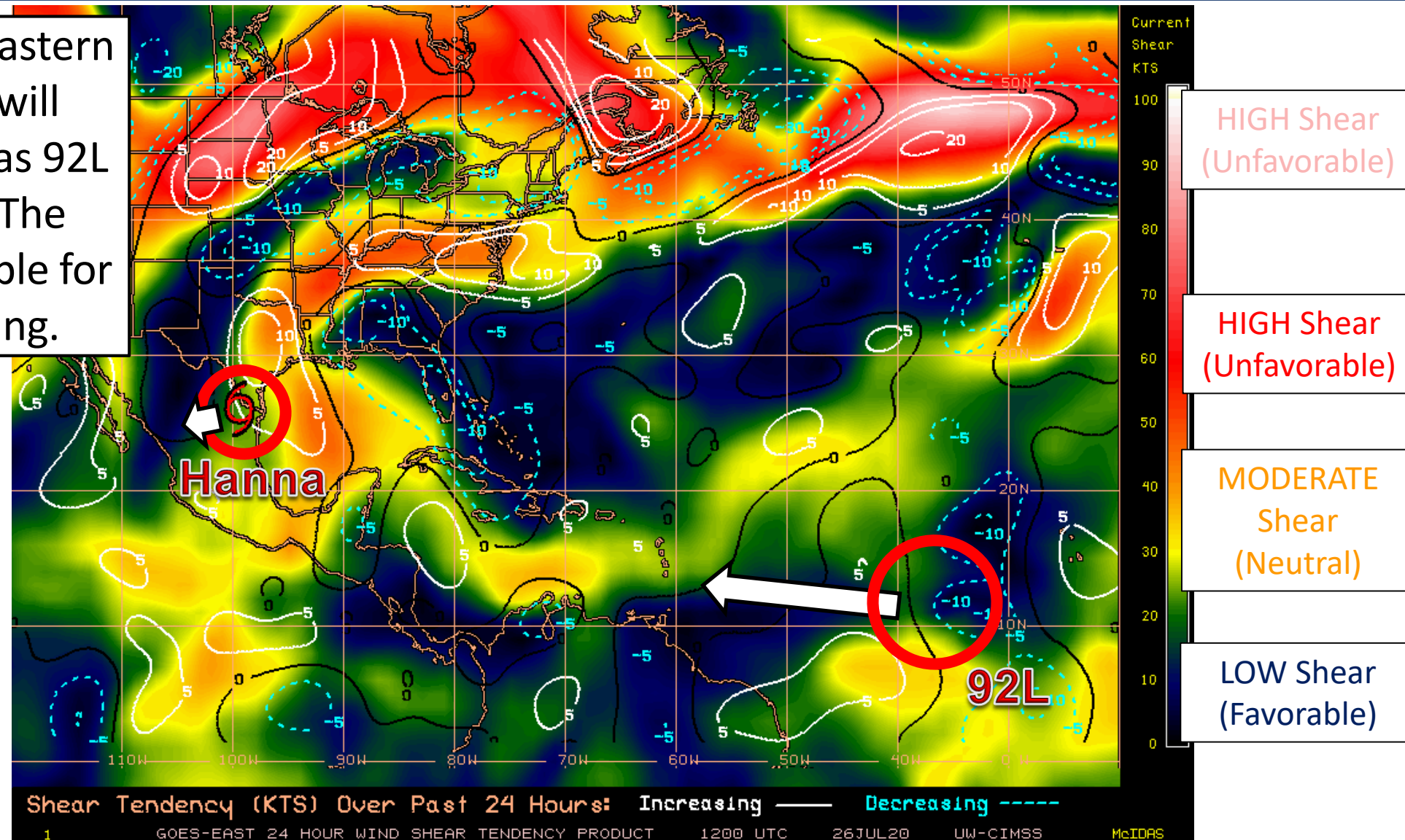


Wind Shear

Is the environment favorable for the system?

Color denotes the amount of wind shear and the lines denote how it have changed over the last 24 hours (dotted lines show decreasing shear and solid lines show increasing).

Wind shear over the eastern Atlantic is low, and will continue to decrease as 92L moves to the west. The environment is favorable for gradual strengthening.



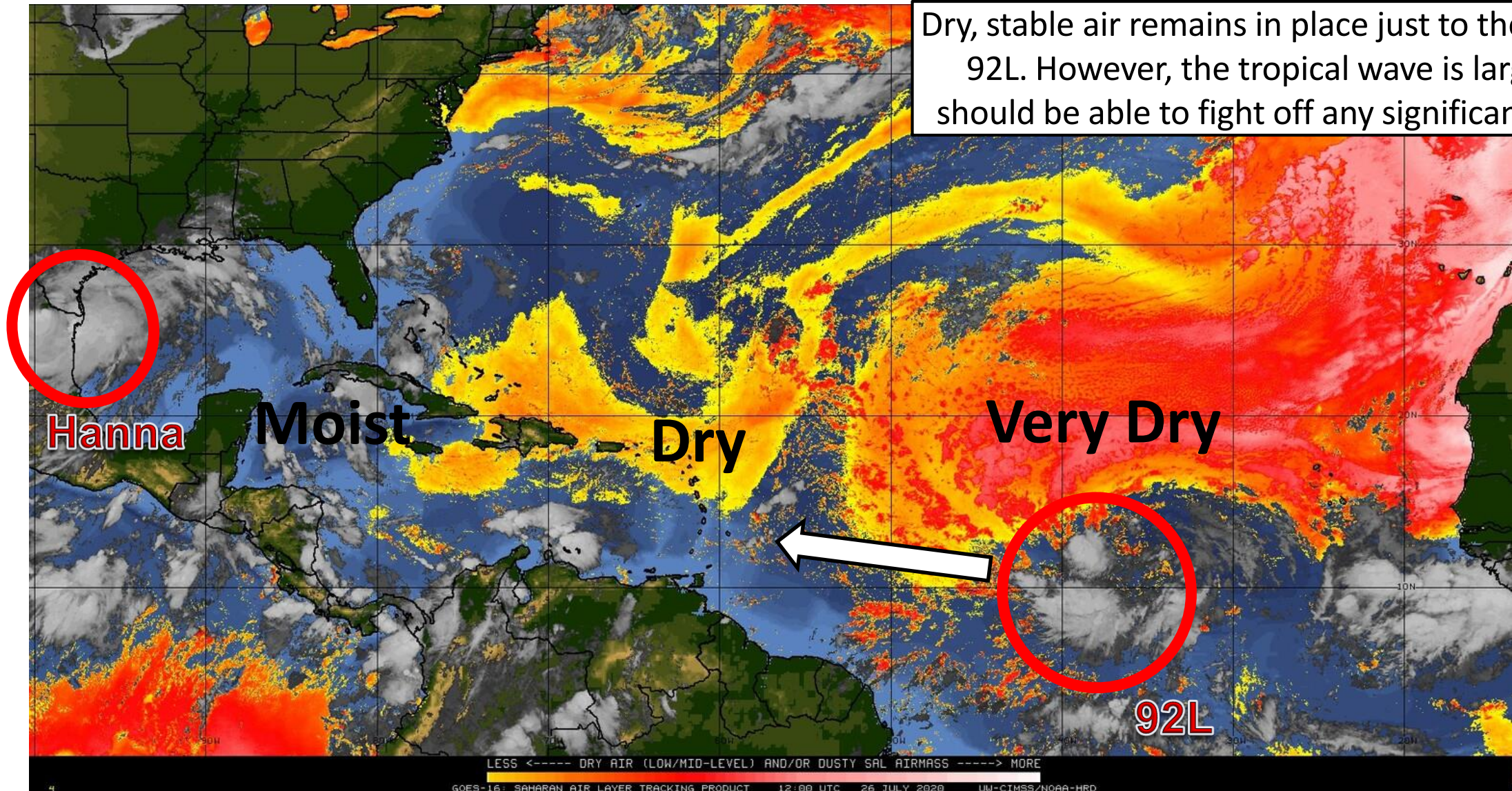


Dry Air & Saharan Dust

Is the environment favorable for the system?

Color denotes concentration of Saharan Dust or dry, stable air.

Dry, stable air remains in place just to the north of 92L. However, the tropical wave is large and should be able to fight off any significant dry air.



LESS <----- DRY AIR (LOW/MID-LEVEL) AND/OR DUSTY SAL AIRMASS -----> MORE

GOES-16: SAHARAN AIR LAYER TRACKING PRODUCT 12:00 UTC 26 JULY 2020 UW-CIMSS/NOAA-HRD



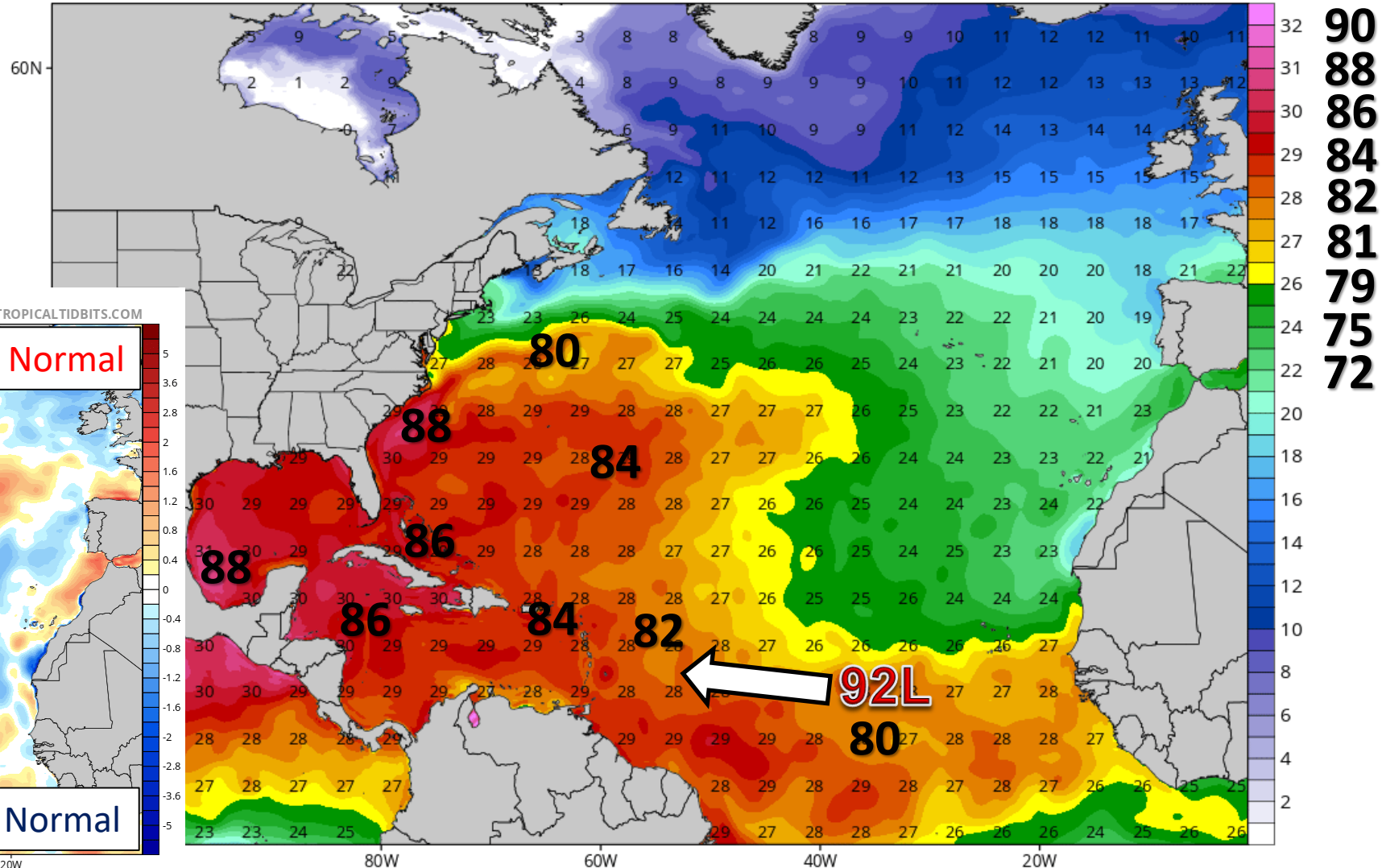
Sea Surface Temperatures & Anomalies

Is the ocean favorable for the system?

Water temperatures are supportive for tropical development across the entire Atlantic basin, and will continue to warm as 92L moves west. Water temperatures are above normal across much of the Atlantic.

CDAS Sea Surface Temperature (°C)

Analysis Time: 06z Jul 26 2020



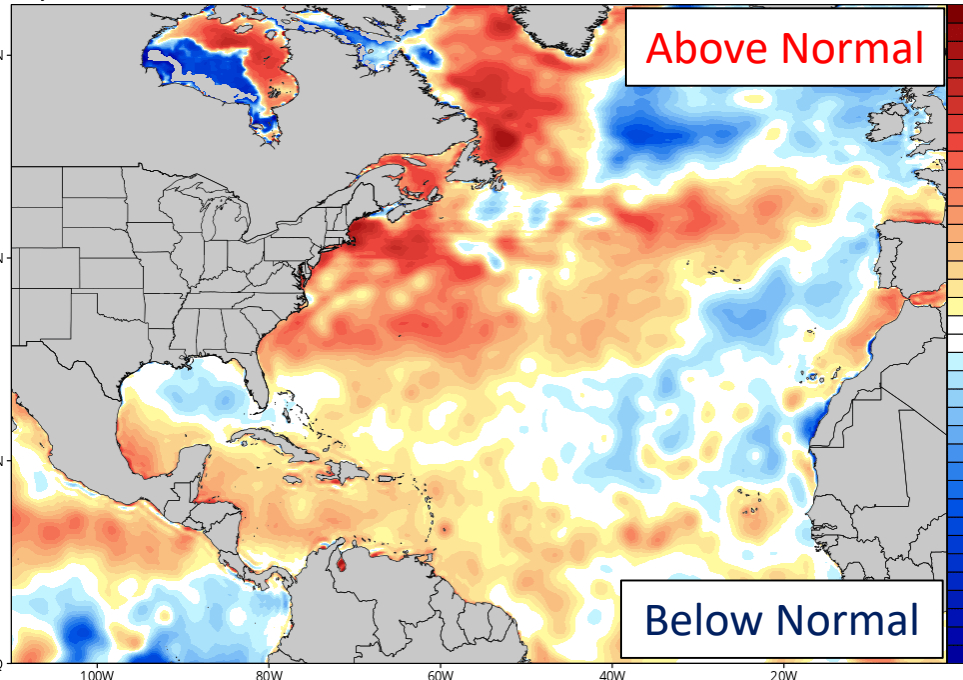
CDAS Sea Surface Temperature Anomaly (°C) (based on CFSR 1981-2010 Climatology)

Analysis Time: 06z Jul 26 2020

TROPICALTIDBITS.COM

Above Normal

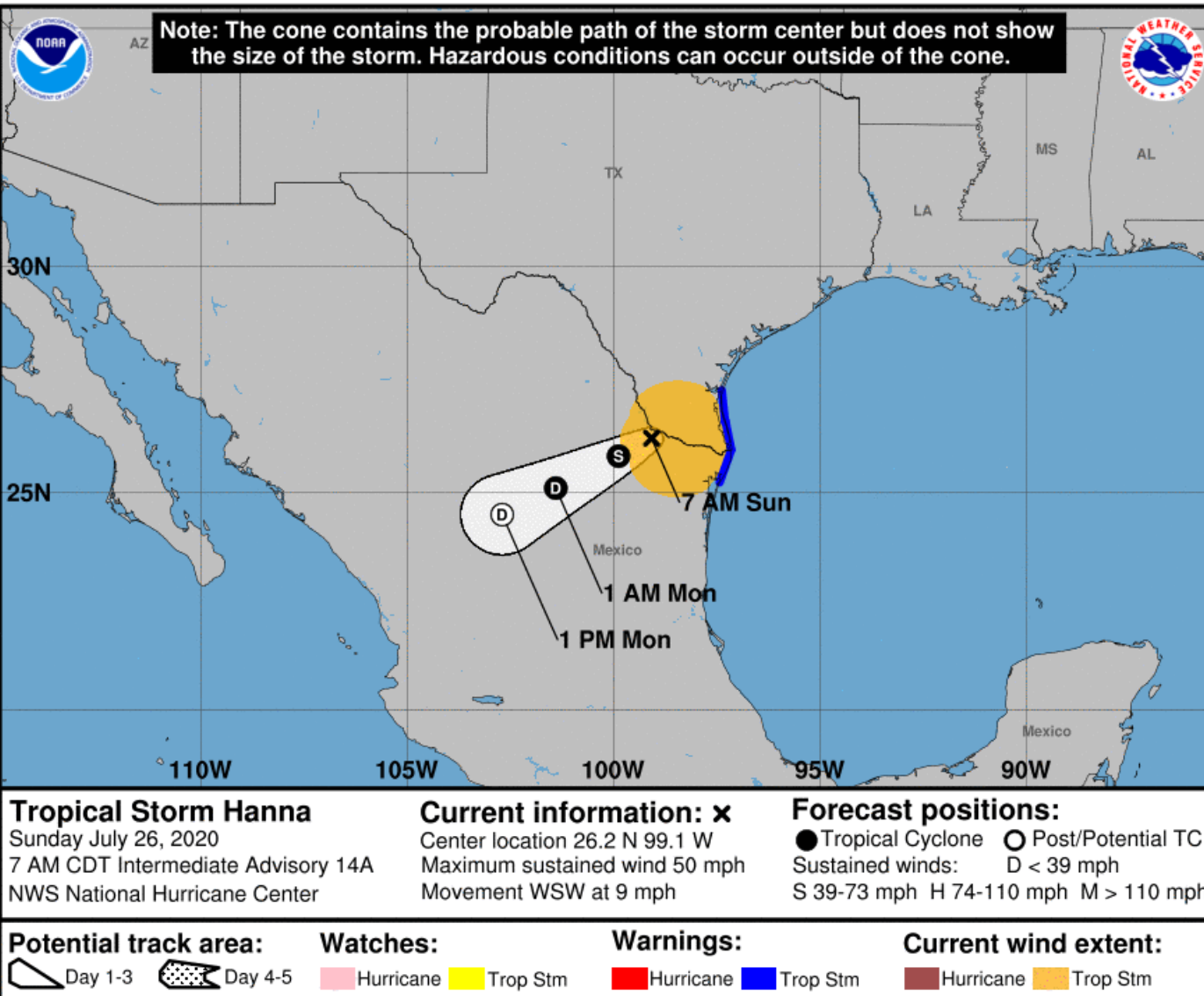
Below Normal





Official Forecast Track

From the National Hurricane Center – Tropical Storm Hanna



- The center of Hanna is located about 60 miles west of McAllen, TX, moving WSW at 9 mph.
- Maximum sustained winds are near 50 mph, and Hanna is quickly weakening over the mountains of Northeast Mexico.
- Flash flooding continues across South Texas.
- This system poses no threat to Florida.



Overall Summary

Tropical Storm Hanna

- As of the 8 AM ET advisory, the center of Hanna was located over northeastern Mexico (about 55 miles west of McAllen, Texas).
- Hanna is moving inland to the west-southwest at 9 mph.
- Maximum sustained winds are near 50 mph and Hanna will continue to weaken over the mountains of northeastern Mexico.
- Flash flooding continues across southern Texas.

Invest 92L (Eastern Atlantic Tropical Wave)

- A tropical wave about 1,000 miles west-southwest of the Cabo Verde Islands will continue to move westward over the tropical Atlantic through the next 5 days. The system is large and will be slow to organize, but conditions favor development.
- This system has a 60% (medium) chance of formation during the 48 hours, but a 90% (high) chance over the next 5 days.
- This system is forecast to move into the Caribbean in about 4 days and continue west/northwest from there.

Florida Outlook:

- **None of the systems pose an immediate threat to Florida, but 92L in the eastern Atlantic should continue to be monitored.**

- An elevated rip current risk is ongoing at all Panhandle and Atlantic beaches.

The next briefing packet will be issued late Monday morning. For the latest information on the tropics, please visit the National Hurricane Center website at www.hurricanes.gov. Daily Weather Packets are published each day in WebEOC Info Message #3518.



TROPICAL UPDATE



Created by:

Michael Spagnolo, Deputy State Meteorologist

Michael.Spagnolo@em.myflorida.com

State Meteorological Support Unit

Florida Division of Emergency Management

Users wishing to subscribe (approval pending) to this distribution list, register at:

https://public.govdelivery.com/accounts/FLDEM/subscriber/new?topic_id=SERT_Met_Tropics.

Other reports available for subscription are available at:

<https://public.govdelivery.com/accounts/FLDEM/subscriber/new?preferences=true>