



TROPICAL UPDATE



11:00 AM EDT

Thursday, July 23, 2020

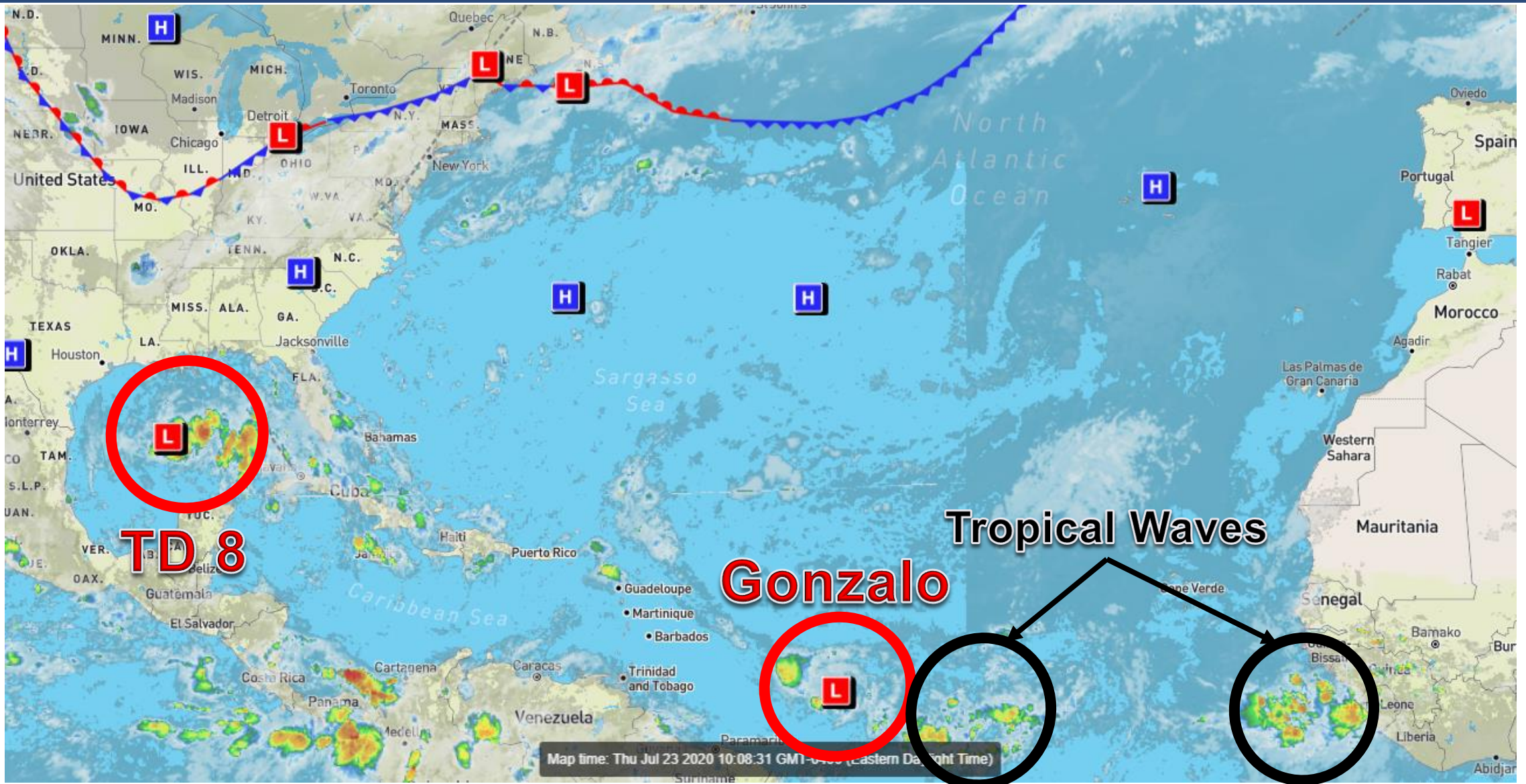
Tropical Storm Gonzalo
& Tropical Depression #8

This update is intended for government and emergency response officials, and is provided for informational and situational awareness purposes only. Forecast conditions are subject to change based on a variety of environmental factors. For additional information, or for any life safety concerns with an active weather event please contact your County Emergency Management or Public Safety Office, local National Weather Service forecast office, or visit the National Hurricane Center website at www.hurricanes.gov.



Atlantic Basin Satellite Image

Chance of development: — None — Low — Medium — High



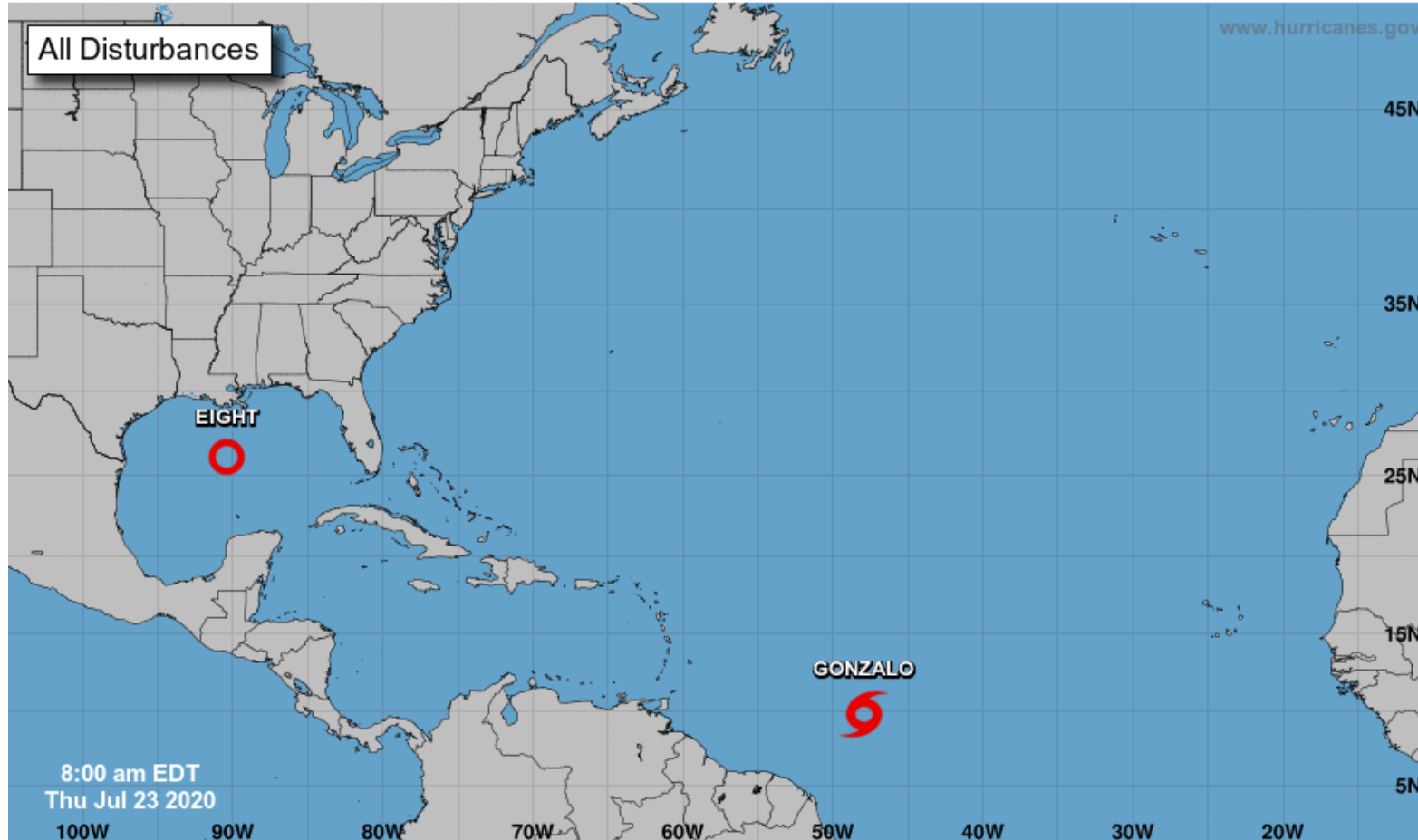


Tropical Weather Outlook

Possible Areas of Development During the Next 5 Days ([LINK](#))



Five-Day Graphical Tropical Weather Outlook National Hurricane Center Miami, Florida



Current Disturbances and Five-Day Cyclone Formation Chance: < 40% 40-60% > 60%

Tropical or Sub-Tropical Cyclone: Depression Storm Hurricane

Post-Tropical Cyclone or Remnants

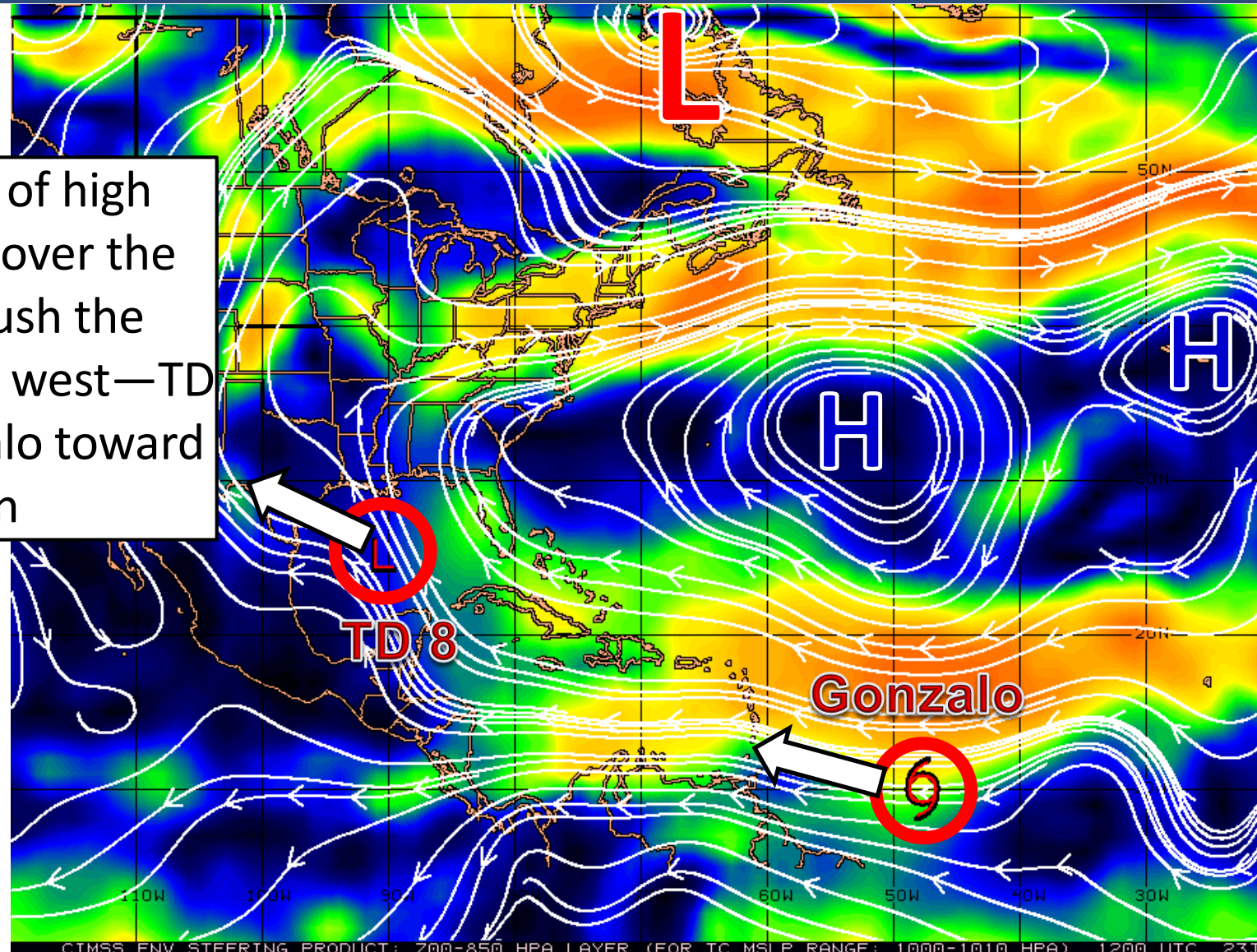


Steering Currents

What is moving the system?

Color denotes the movement speed through the atmosphere and thin white lines denote direction. Tightly clustered white lines represent faster movement as well.

A large, strong area of high pressure is centered over the Atlantic. This will push the tropical systems to the west—TD 8 toward Texas, Gonzalo toward the Caribbean



Fast Moving Storm

Fast Moving Storm

Typical Moving Storm

Slow Moving Storm



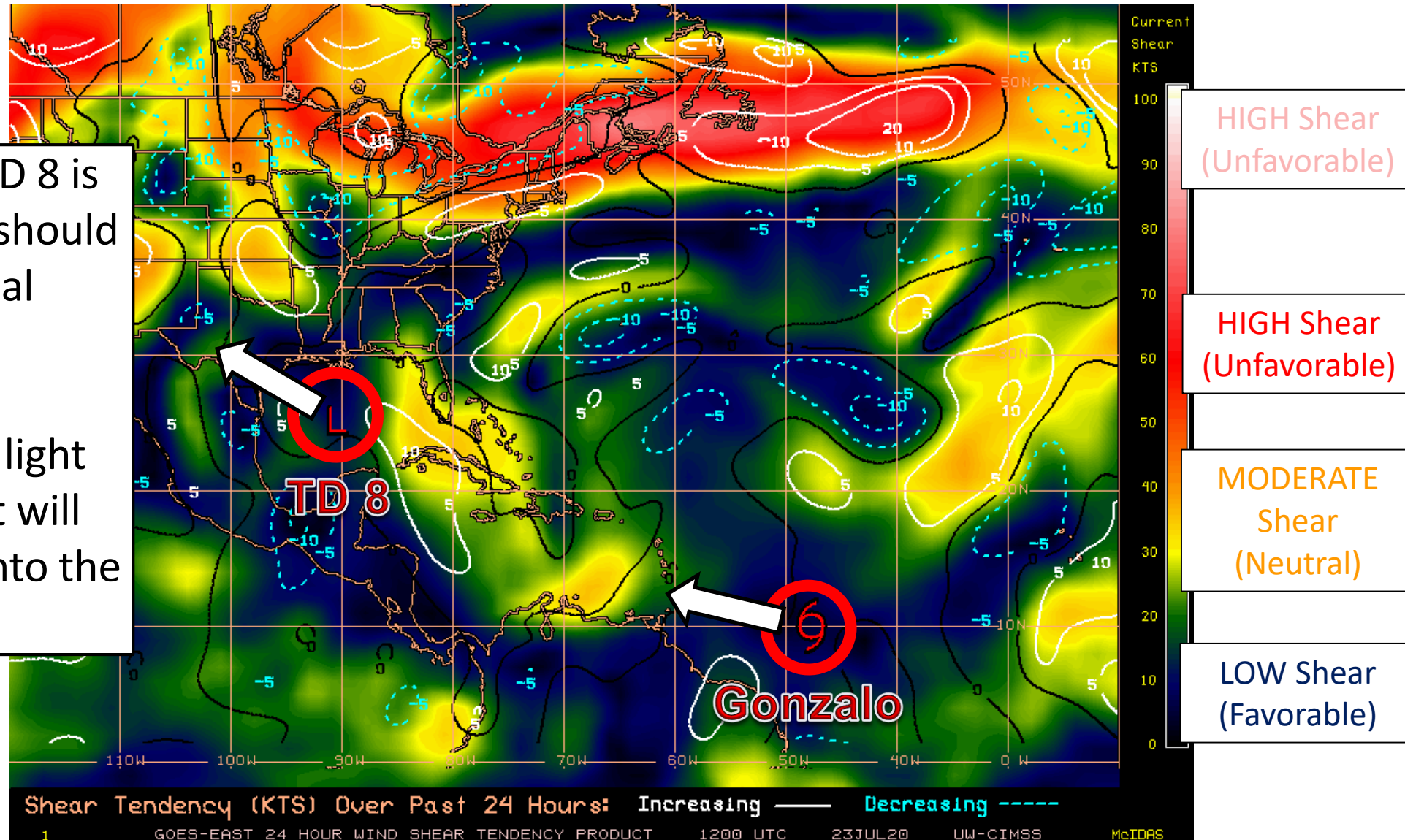
Wind Shear

Is the environment favorable for the system?

Color denotes the amount of wind shear and the lines denote how it have changed over the last 24 hours (dotted lines show decreasing shear and solid lines show increasing).

Wind shear around TD 8 is relatively light, which should allow for additional organization.

Wind shear remains light around Gonzalo, but will increase once it gets into the Caribbean.

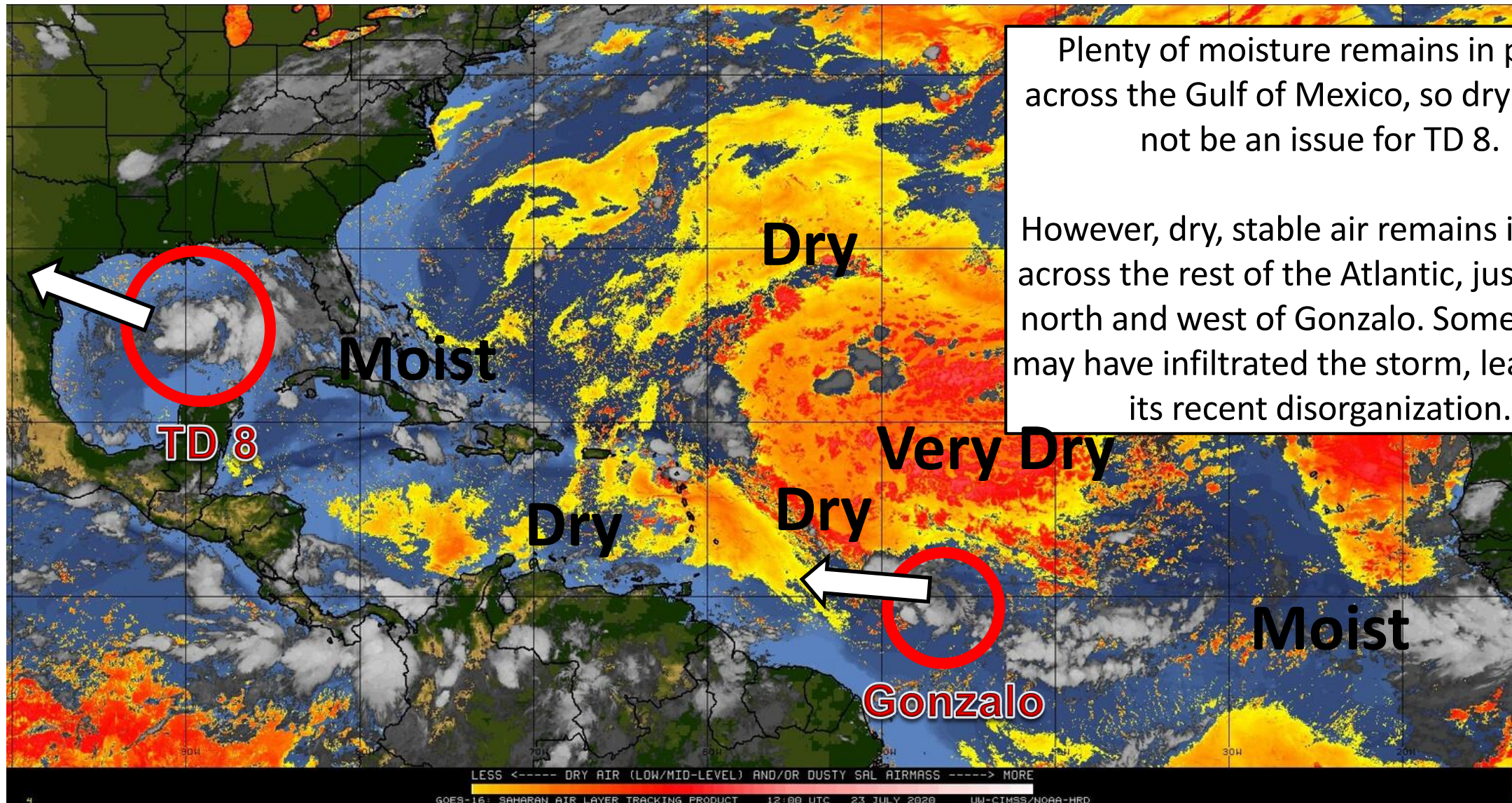




Dry Air & Saharan Dust

Is the environment favorable for the system?

Color denotes concentration of Saharan Dust or dry, stable air.



Plenty of moisture remains in place across the Gulf of Mexico, so dry air will not be an issue for TD 8.

However, dry, stable air remains in place across the rest of the Atlantic, just to the north and west of Gonzalo. Some dry air may have infiltrated the storm, leading to its recent disorganization.



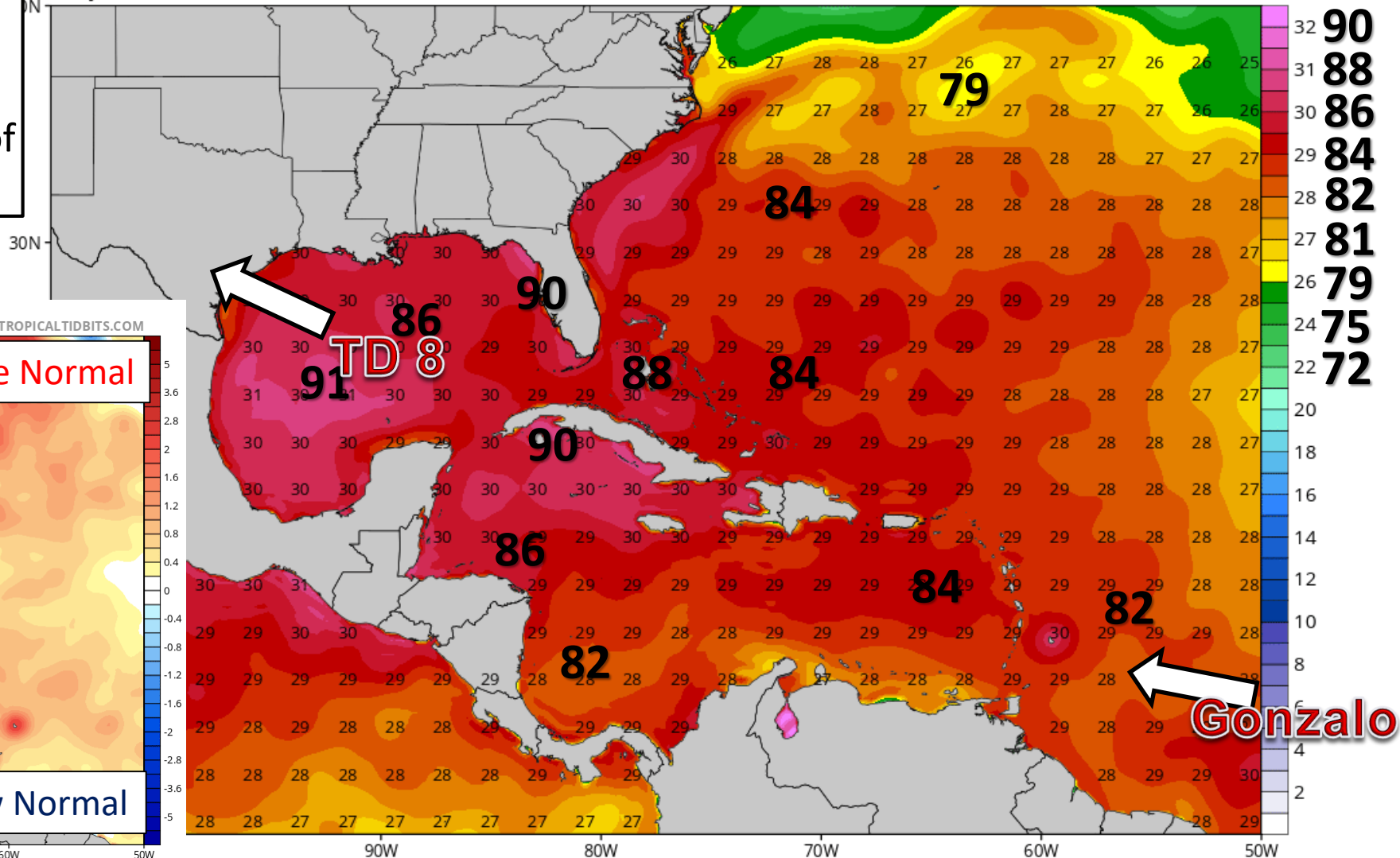
Sea Surface Temperatures & Anomalies

Is the ocean favorable for the system?

Water temperatures are plenty warm to support tropical development across the entire western Atlantic, and are above normal for this time of year.

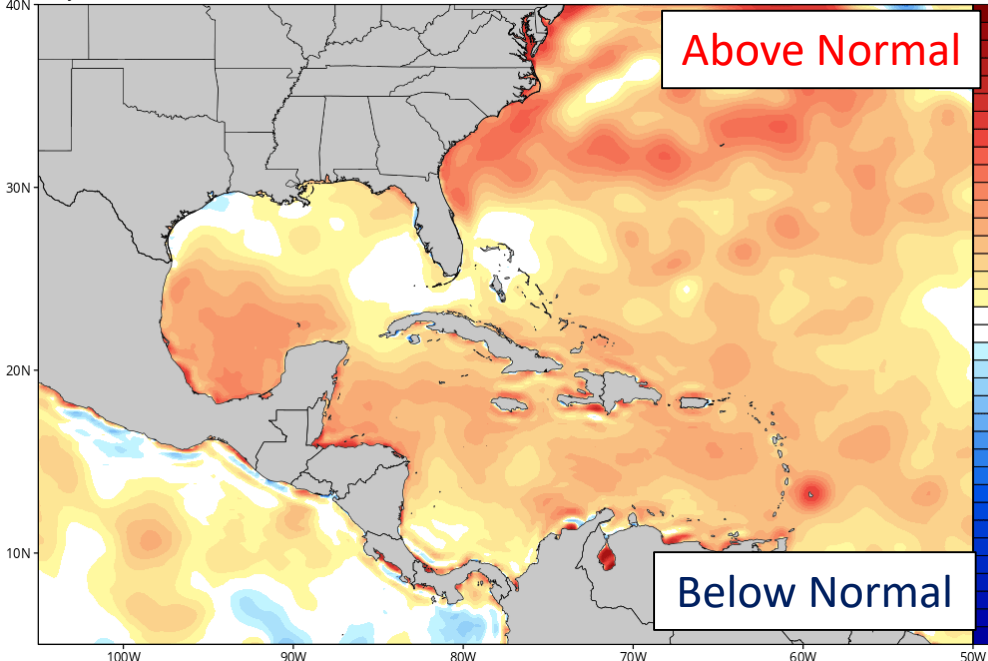
CDAS Sea Surface Temperature (°C)

Analysis Time: 06z Jul 23 2020



CDAS Sea Surface Temperature Anomaly (°C) (based on CFSR 1981-2010 Climatology)

Analysis Time: 06z Jul 23 2020



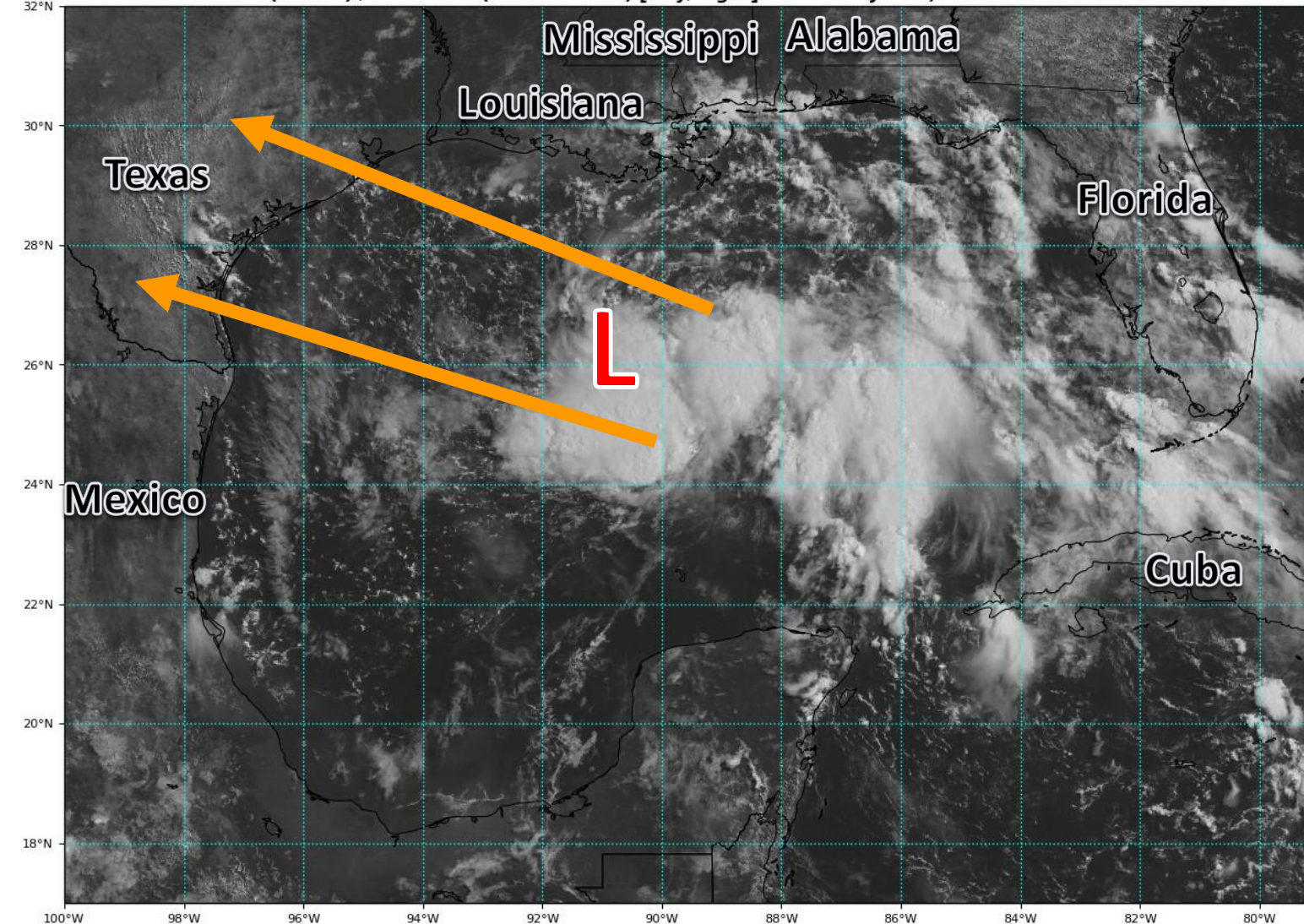


Satellite Imagery

Tropical Depression #8

GOES-16 Channel 2 (visible) / Channel 7 (shortwave IR) [Day/Night] at 14:25Z Jul 23, 2020

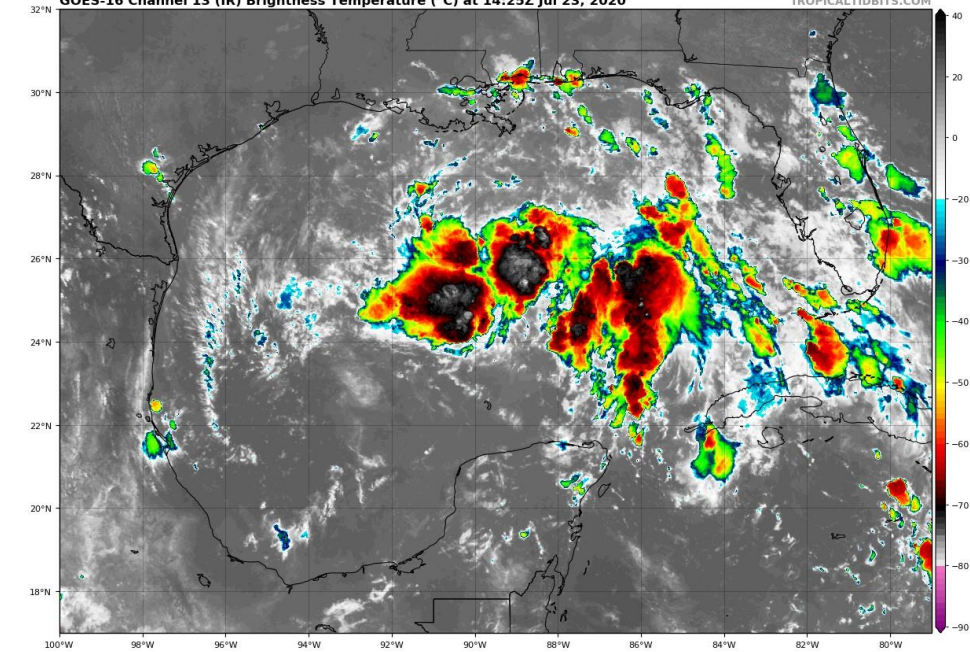
TROPICALTIDBITS.COM



Advisories were initiated on Tropical Depression #8 last night. The depression is gradually becoming better organized, and it still has time to become a tropical storm as it moves toward Texas.

GOES-16 Channel 13 (IR) Brightness Temperature (°C) at 14:25Z Jul 23, 2020

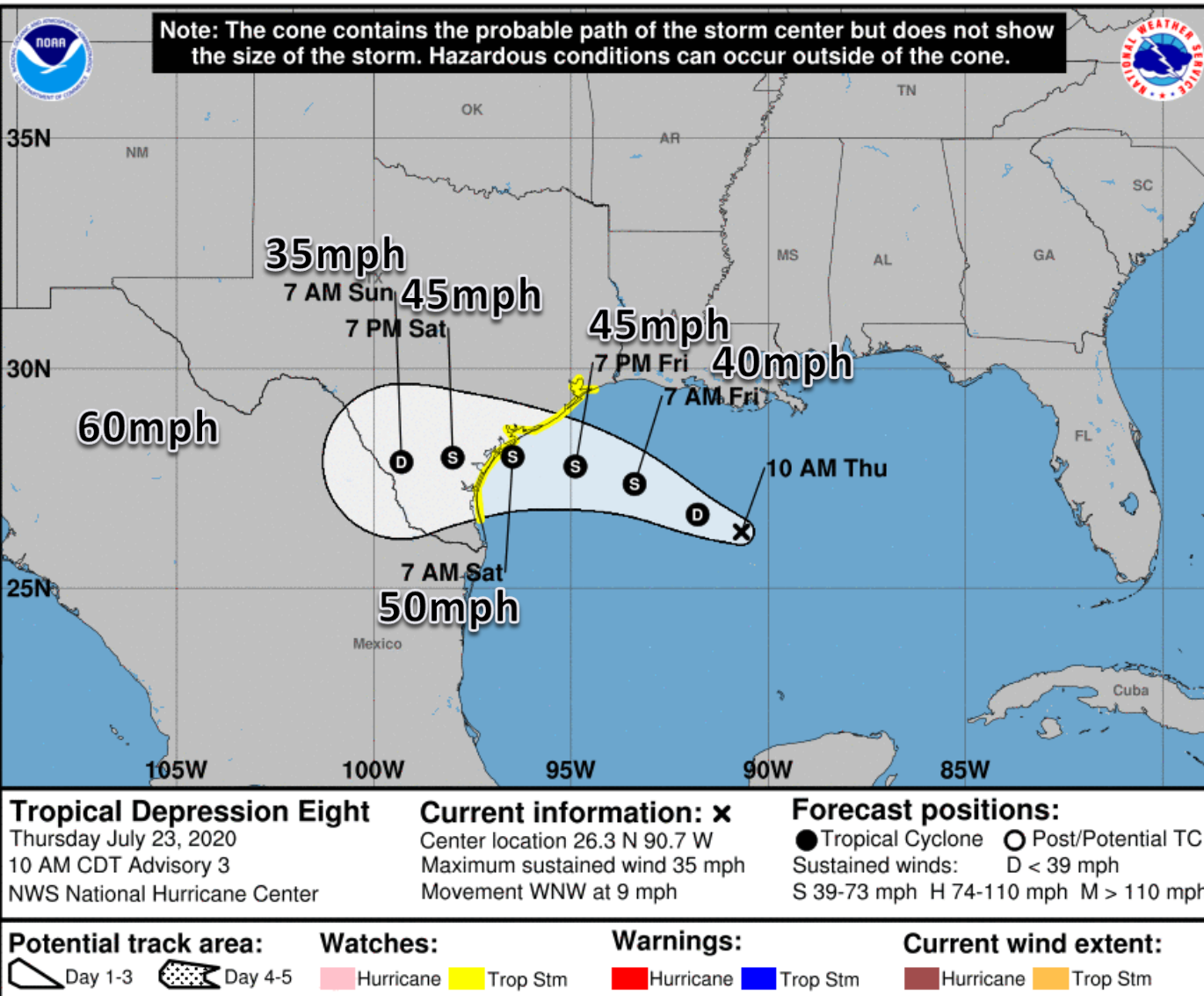
TROPICALTIDBITS.COM





Official Forecast Track

From the National Hurricane Center – Tropical Depression #8

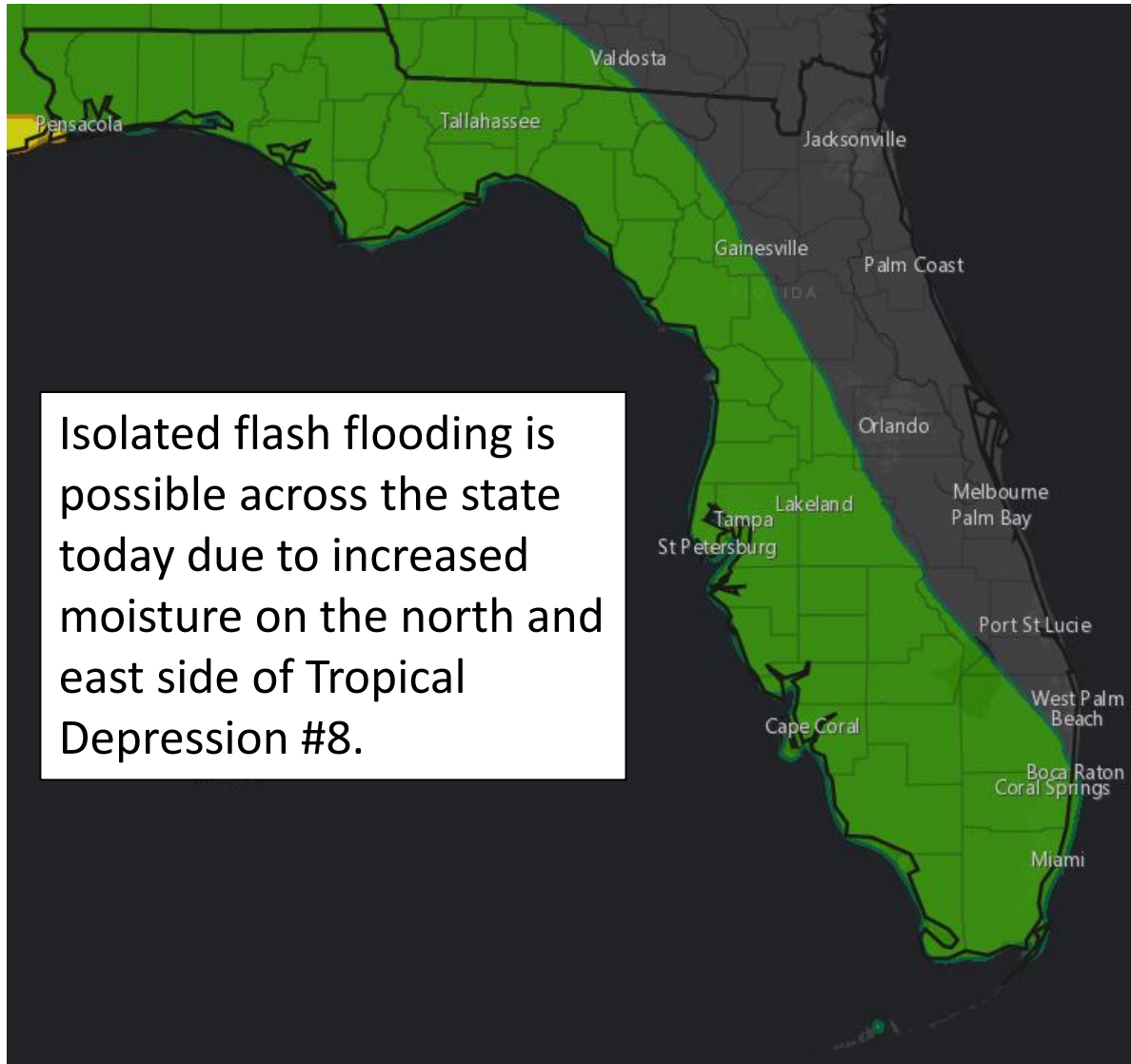


- The center of Tropical Depression #8 is about 380 miles east-southeast of Port O'Connor, TX
- Maximum sustained winds are near 35mph and gradual strengthening is forecast until landfall.
- TD 8 will likely become a tropical storm in the next 12 to 24 hours.
- TD 8 is moving to the west-northwest at 9 mph which should continue through landfall.
- TD 8 should make landfall in Texas on Saturday.



Flash Flood Outlook

From the Weather Prediction Center ([LINK](#))



Understanding WPC Excessive Rainfall Risk Categories

No Area/Label	MARGINAL (MRGL)	SLIGHT (SLGT)	MODERATE (MDT)	HIGH (HIGH)
Flash floods are generally not expected.	Isolated flash floods possible	Scattered flash floods possible	Numerous flash floods likely	Widespread flash floods expected
@NWSWPC	Localized and primarily affecting places that can experience rapid runoff with heavy rainfall.	Mainly localized. Most vulnerable are urban areas, roads, small streams and washes. Isolated significant flash floods possible.	Numerous flash flooding events with significant events possible. Many streams may flood, potentially affecting larger rivers.	Severe, widespread flash flooding. Areas that don't normally experience flash flooding, could. Lives and property in greater danger.
Flash flooding near me?	Flash Flooding	Flash Flooding	Flash Flooding	Flash Flooding
NO Flash Flooding	Flash Flooding	Flash Flooding	Flash Flooding	Flash Flooding
WEATHER PREDICTION CENTER				

Risk of rainfall exceeding flash flood guidance within 25 miles of a point to the right of a line

HIGH: > 50%

SLGT: 10%-20%

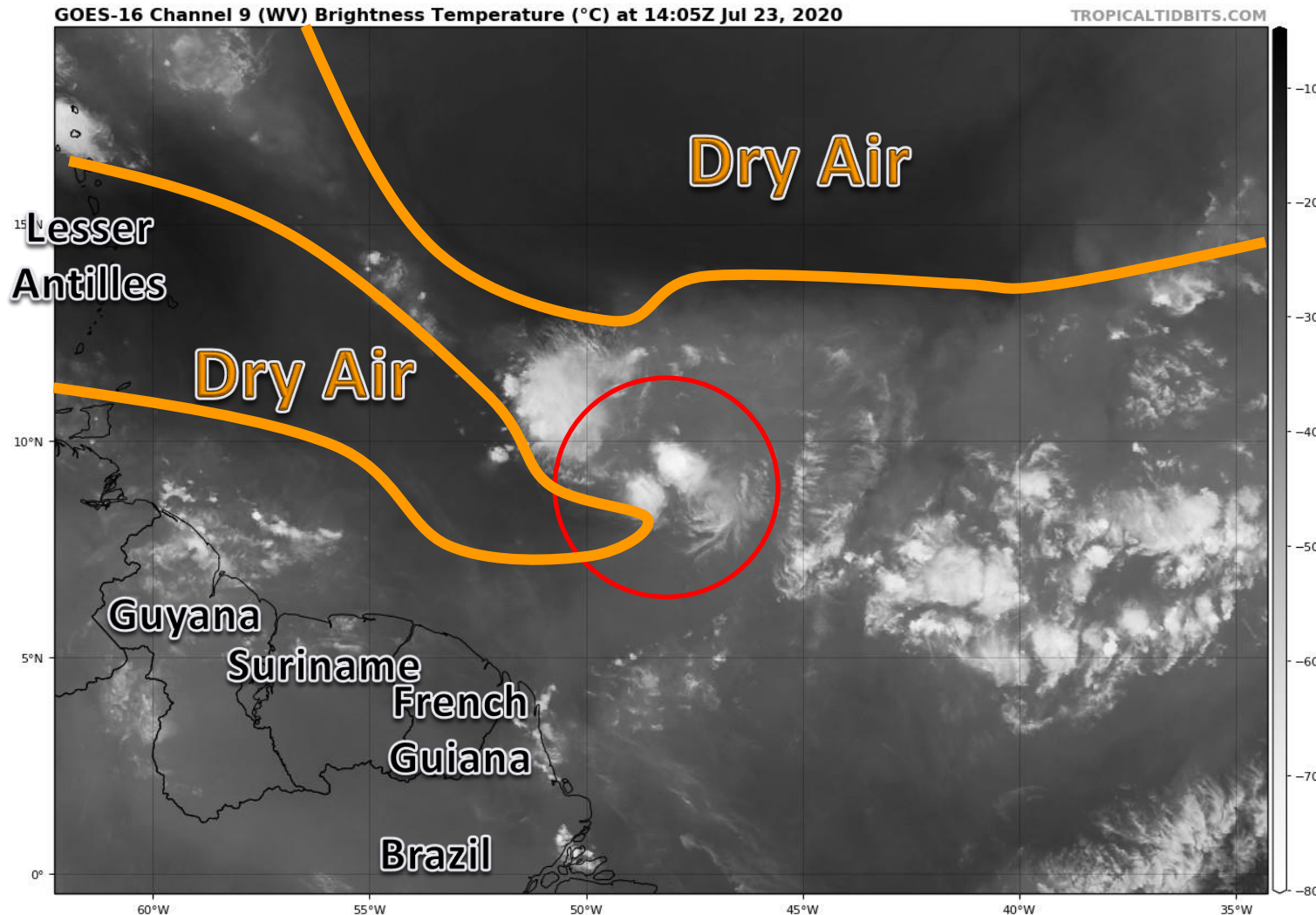
MDT: 20%-50%

MRGL: 5%-10%

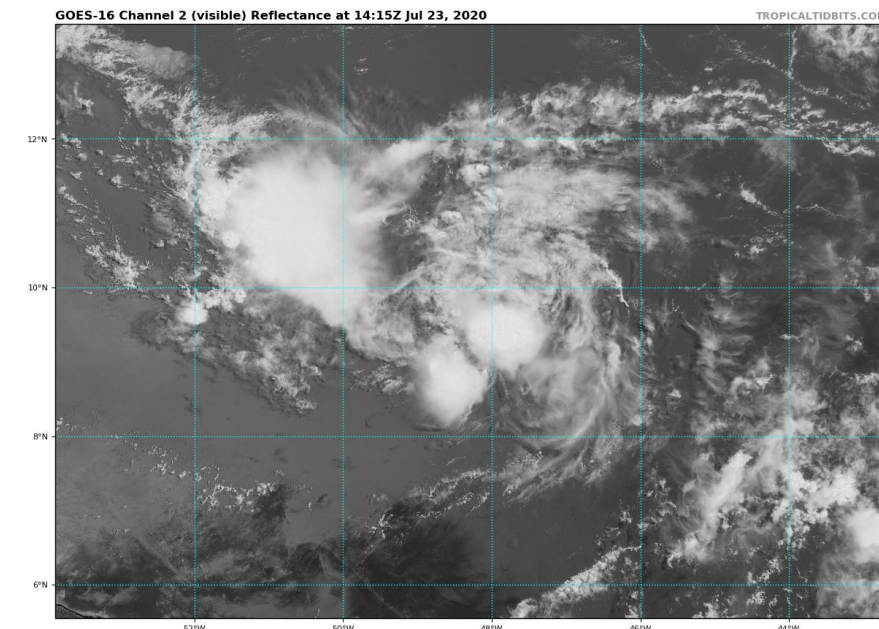


Satellite Imagery

Central Atlantic – Tropical Storm Gonzalo



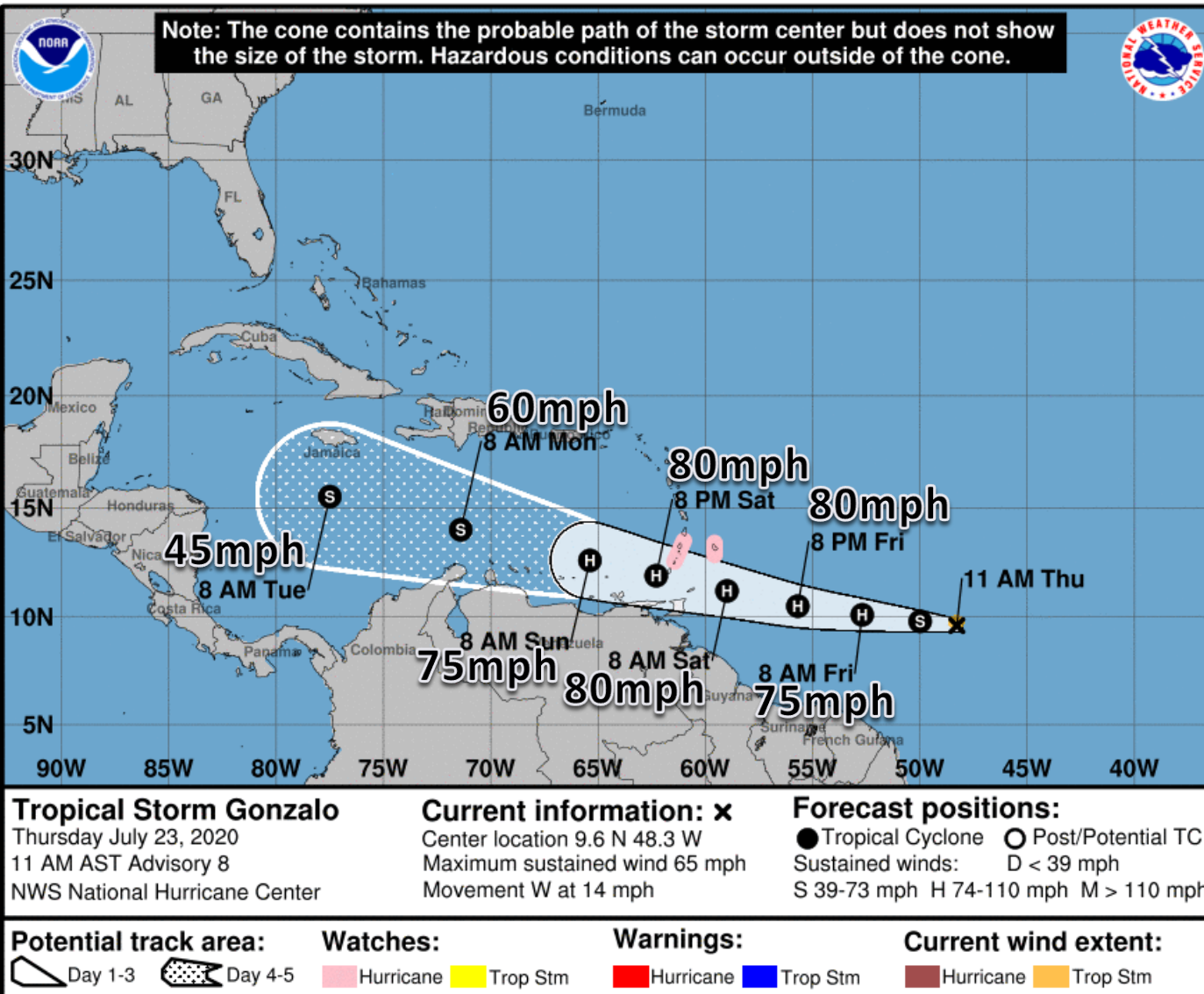
Gonzalo has become much more disorganized overnight as dry air has started to infiltrate the system. A complex of thunderstorms off to its northwest is surging away from the center due to the dry air. These small storms are very fickle and can ramp up quickly but also fade quickly.





Official Forecast Track

From the National Hurricane Center – Tropical Storm Gonzalo



- The center of Tropical Storm Gonzalo is about 885 miles east of the southern Windward Islands.
- Maximum sustained winds are near 65mph. Gonzalo is forecast to become a hurricane on Friday. *However, the short term forecast is even more uncertain due to its loss of organization.*
- Gonzalo is moving to the west at 14 mph, and a gradual increase in forward speed is expected
- Gonzalo will move through the Caribbean early next week where some weakening is forecast



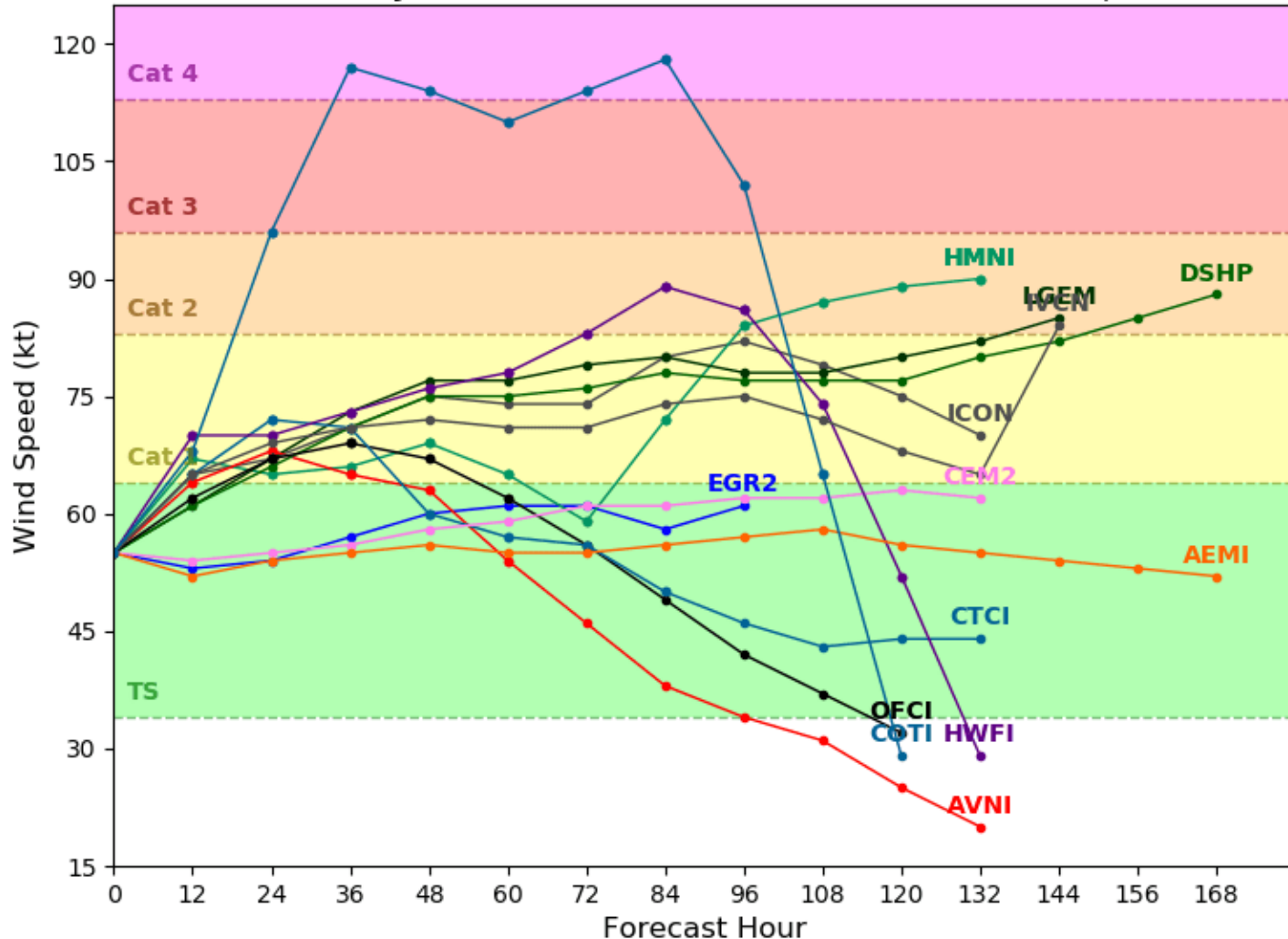
Model Forecast Intensity

Dynamical and Statistical Models – Tropical Storm Gonzalo

Tropical Storm GONZALO Model Intensity Guidance

Initialized at 12z Jul 23 2020

Levi Cowan - tropicaltidbits.com



There is a **SIGNIFICANT SPREAD** in the intensity forecast of this system.

The National Hurricane Center is forecasting a Category 1 hurricane, but as the system reaches the Caribbean, the possibilities range from a hurricane to a weak, remnant low.

Small systems in this part of the Atlantic are difficult to forecast! Stay tuned to the forecast.



Overall Summary

Tropical Depression #8

- Advisories started on Tropical Depression #8 last night, and it has become better organized in the last 12 hours.
- As of the 11 AM ET advisory, the center of TD #8 is located about 380 miles east-southeast of Port O'Connor, TX, moving west-northwest at 9 mph.
- Maximum sustained winds are near 35 mph, and TD #8 is expected to become a tropical storm tonight or Friday.
- Air Force Reserve Hurricane Hunter aircraft is en route to investigate the system.
- TD #8 is forecast to make landfall on Saturday along the Texas Gulf Coast.
- The next name on the list is Hanna.

Tropical Storm Gonzalo

- As of the 11 AM ET advisory, the center of Gonzalo is located about 885 miles east of the southern Windward Islands, moving to the west at 14 mph.
- Maximum sustained winds are near 65 mph, and Gonzalo is forecast to be a hurricane by Friday.
- However, the current intensity and thus the forecast are uncertain. Dry air may have infiltrated Gonzalo's center, leading to the system becoming disorganized.
- Regardless of the shape Gonzalo is in, it will move in to the eastern Caribbean this weekend and be in the western Caribbean early next week.



Overall Summary

Florida Outlook:

- Tropical Storm Gonzalo poses no threat to Florida through early next week, but it should continue to be monitored.

-
- For Tropical Depression #8 in the central Gulf of Mexico: Increased rain chances are expected across the state today.
 - Some thunderstorms will be strong, with gusty winds around 45 mph, frequent lightning, waterspouts, and heavy rainfall.
 - An isolated case of flash flooding can't be ruled out, with street flooding in urban areas. **Significant impacts are not expected.**
 - An elevated rip current risk is ongoing at all Panhandle and Atlantic beaches through the end of the week, with tides running about 1' above normal along the Gulf Coast.

The next briefing packet will be issued late Friday morning. For the latest information on the tropics, please visit the National Hurricane Center website at www.hurricanes.gov. Daily Weather Packets are published each day in WebEOC Info Message #3518.



TROPICAL UPDATE



Created by:

Cameron Young, Assistant State Meteorologist

Cameron.Young@em.myflorida.com

State Meteorological Support Unit

Florida Division of Emergency Management

Users wishing to subscribe (approval pending) to this distribution list, register at:

https://public.govdelivery.com/accounts/FLDEM/subscriber/new?topic_id=SERT_Met_Tropics.

Other reports available for subscription are available at:

<https://public.govdelivery.com/accounts/FLDEM/subscriber/new?preferences=true>