



TROPICAL UPDATE



2:00 PM EDT

Sunday, July 5, 2020

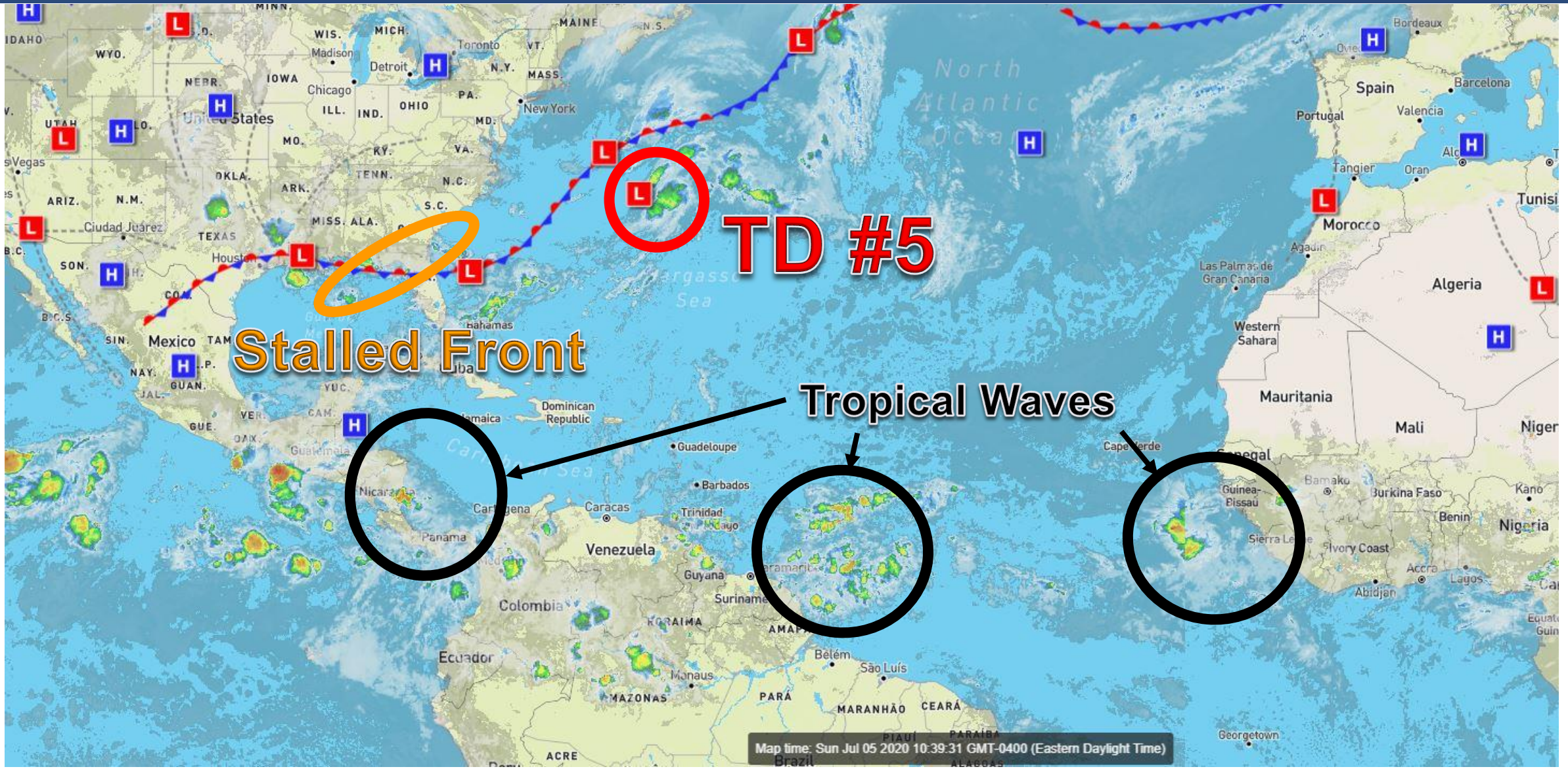
Tropical Depression Five
& Gulf Low (40%)

This update is intended for government and emergency response officials, and is provided for informational and situational awareness purposes only. Forecast conditions are subject to change based on a variety of environmental factors. For additional information, or for any life safety concerns with an active weather event please contact your County Emergency Management or Public Safety Office, local National Weather Service forecast office, or visit the National Hurricane Center website at www.hurricanes.gov.



Atlantic Basin Satellite Image

Chance of development: — None — Low — Medium — High



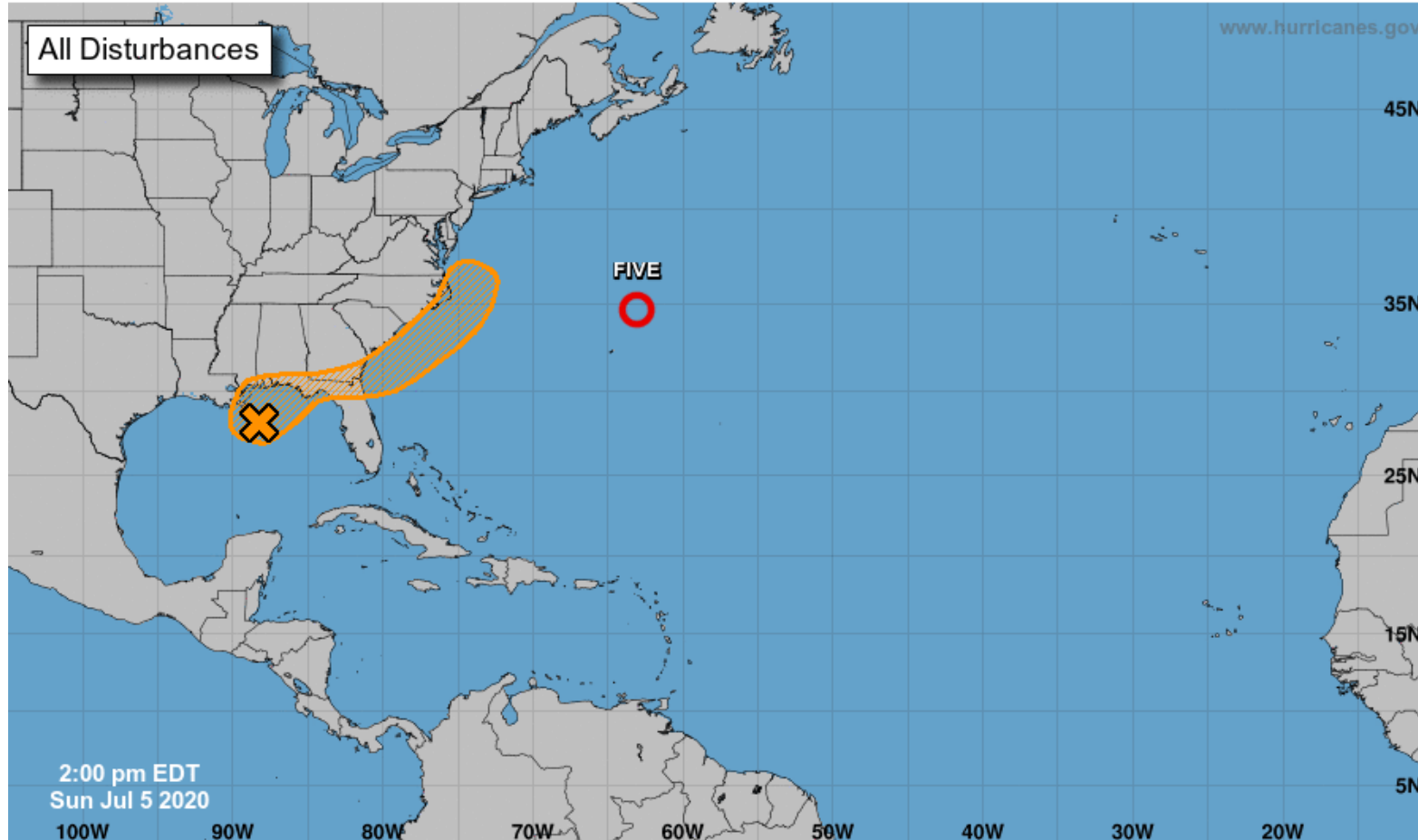


Tropical Weather Outlook

Possible Areas of Development During the Next 5 Days ([LINK](#))



Five-Day Graphical Tropical Weather Outlook National Hurricane Center Miami, Florida



Current Disturbances and Five-Day Cyclone Formation Chance: < 40% 40-60% > 60%

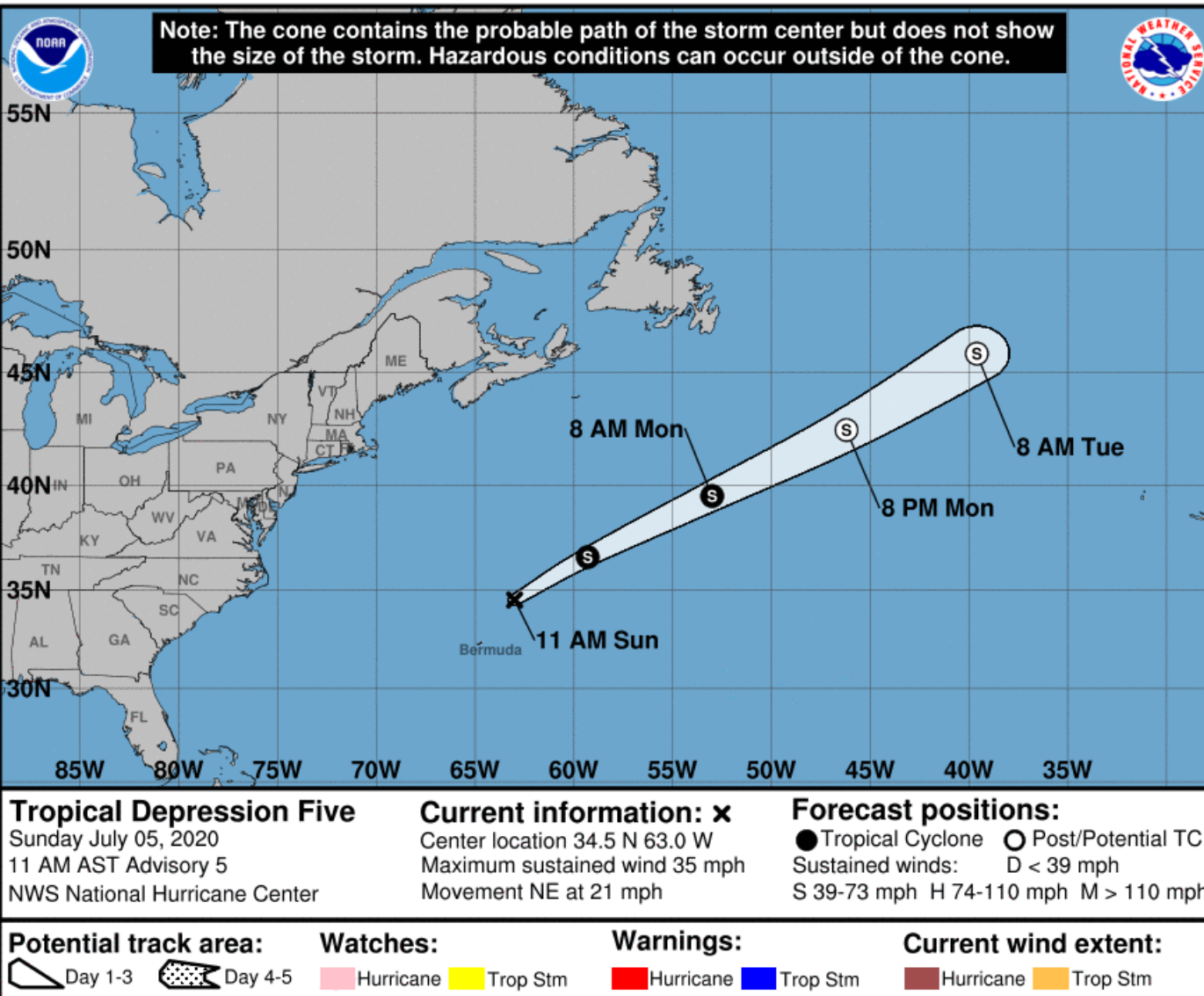
Tropical or Sub-Tropical Cyclone: Depression Storm Hurricane

Post-Tropical Cyclone or Remnants



Official Forecast Track

From the National Hurricane Center



- The center of Tropical Depression #5 is located about 185 miles northeast of Bermuda.
- Maximum sustained winds are near 35 mph.
- TD #5 is moving east-northeast at 21 mph and accelerating
- Little overall change in strength is expected, but the system could become Tropical Storm Edouard later today before becoming extratropical over the cold waters of the North Atlantic on Monday.

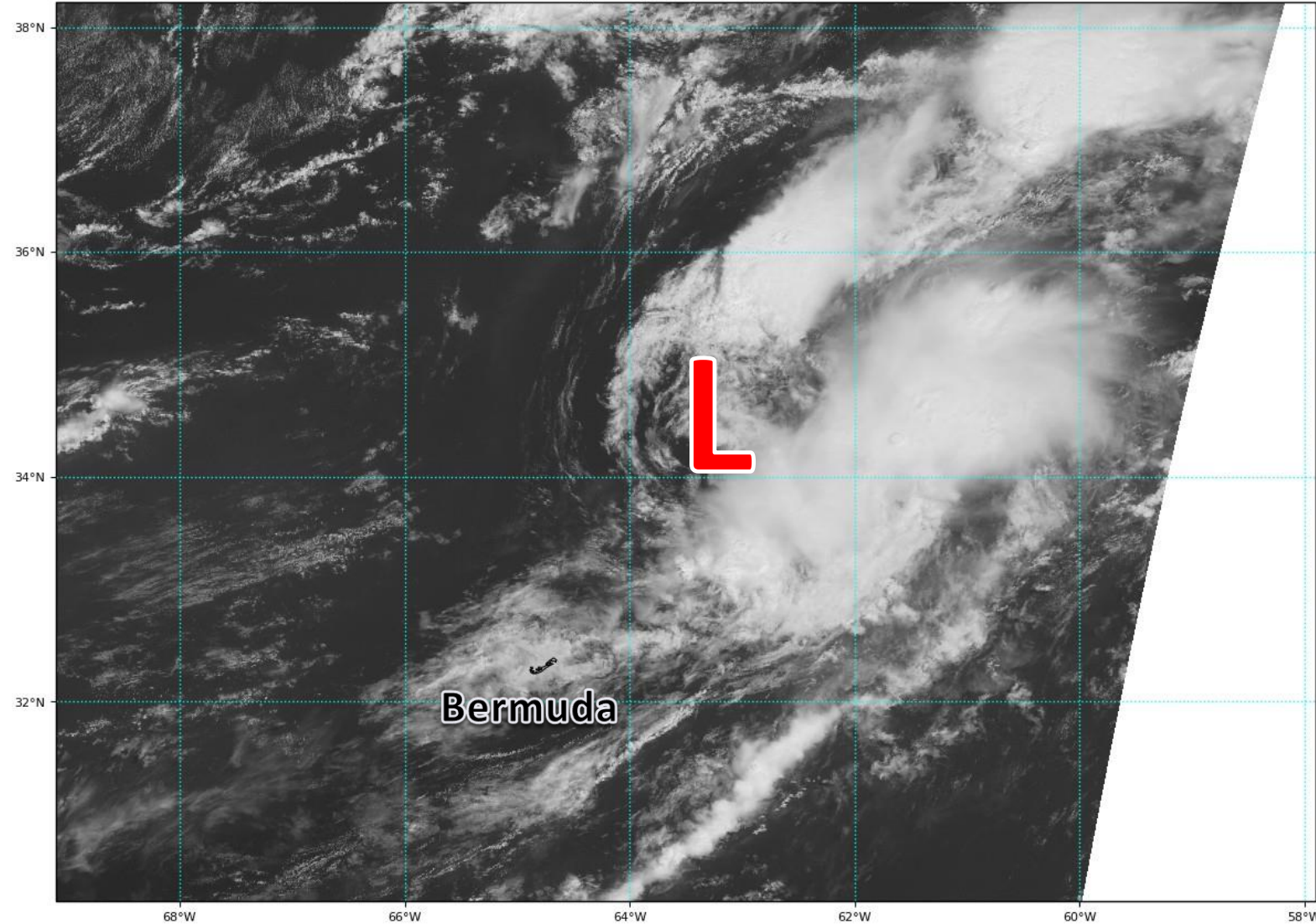


Satellite Imagery

Tropical Depression #5

GOES-16 Channel 2 (visible) Reflectance at 14:52Z Jul 05, 2020

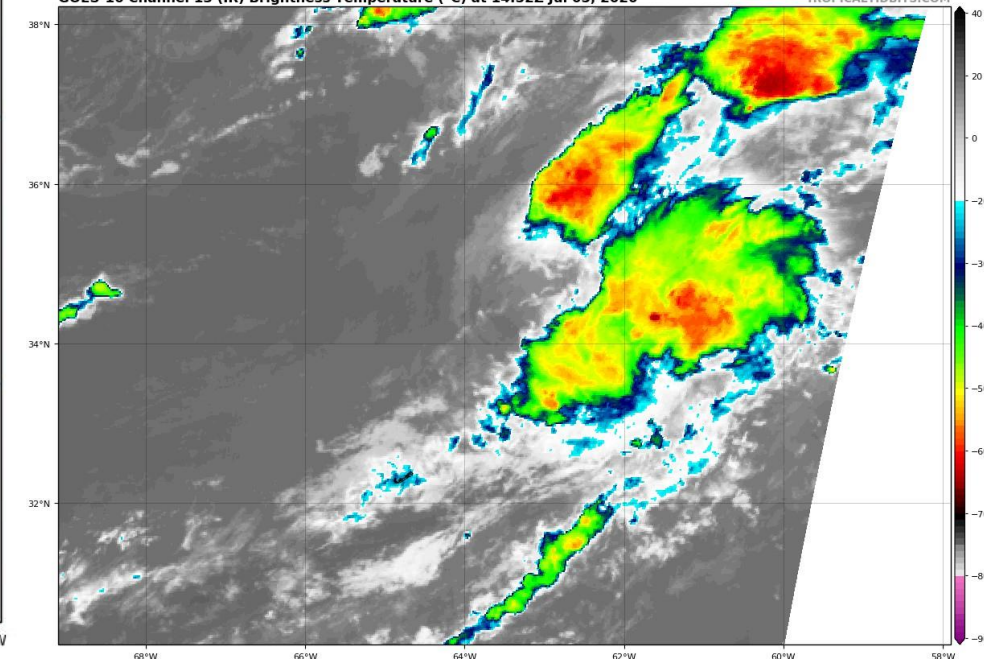
TROPICALTIDBITS.COM



Tropical Depression #5 remains tiny and compact with most of the thunderstorms to the east of the center.

GOES-16 Channel 13 (IR) Brightness Temperature (°C) at 14:52Z Jul 05, 2020

TROPICALTIDBITS.COM





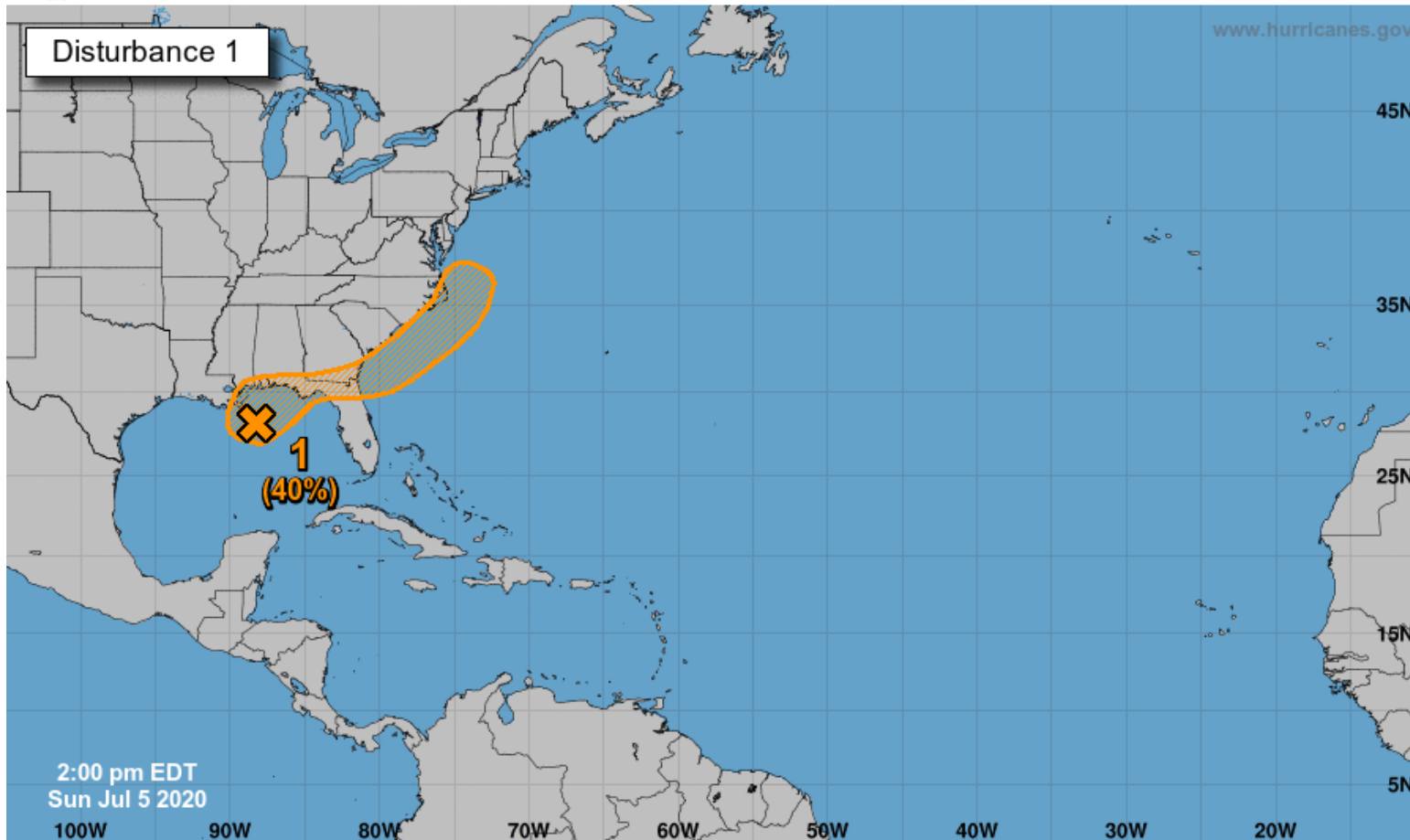
Tropical Weather Outlook

Possible Areas of Development During the Next 5 Days ([LINK](#))



Five-Day Graphical Tropical Weather Outlook

National Hurricane Center Miami, Florida



Recent satellite and radar observations indicate that a small low pressure system has formed within a broader area of low pressure near the northern Gulf Coast.

The low is producing a few showers near its center, and some slight development is possible before it moves inland early Monday.

The broader low pressure system is forecast to move northeastward and could emerge offshore of the Carolinas later this week, where environmental conditions are expected to be more conducive for development.

***Formation chance through 48 hours...low...20 percent.**

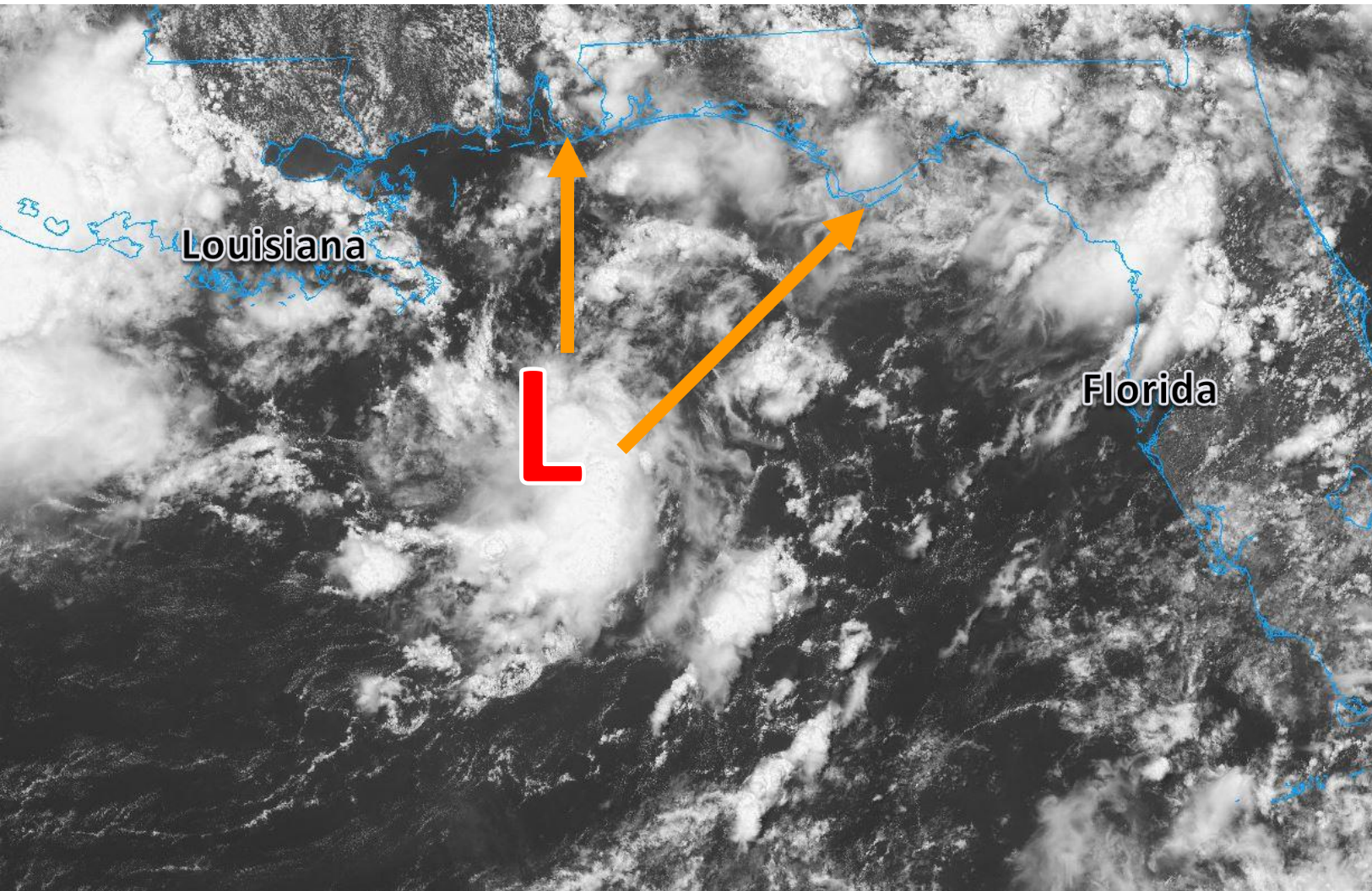
***Formation chance through 5 days...medium...40 percent.**

Current Disturbances and Five-Day Cyclone Formation Chance:
 Tropical or Sub-Tropical Cyclone:
 < 40% 40-60% > 60%
 Depression Storm Hurricane
 Post-Tropical Cyclone or Remnants



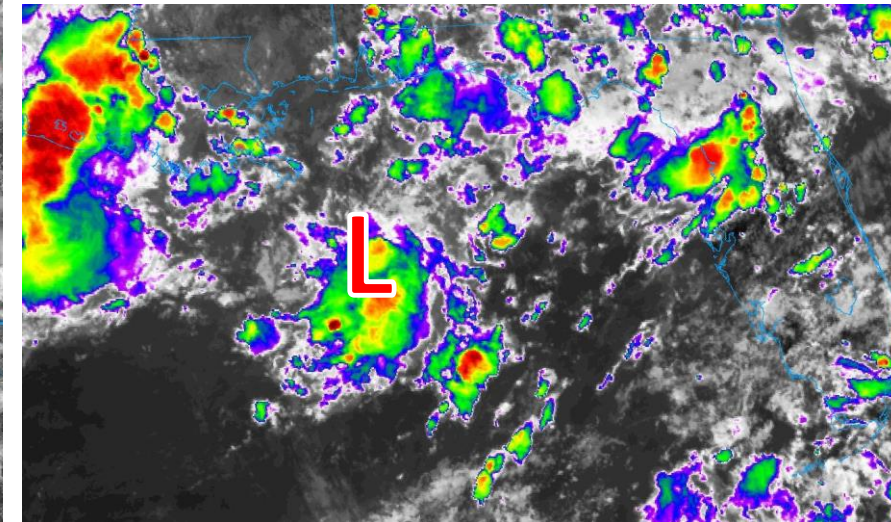
Satellite Imagery

Gulf Low (40%)



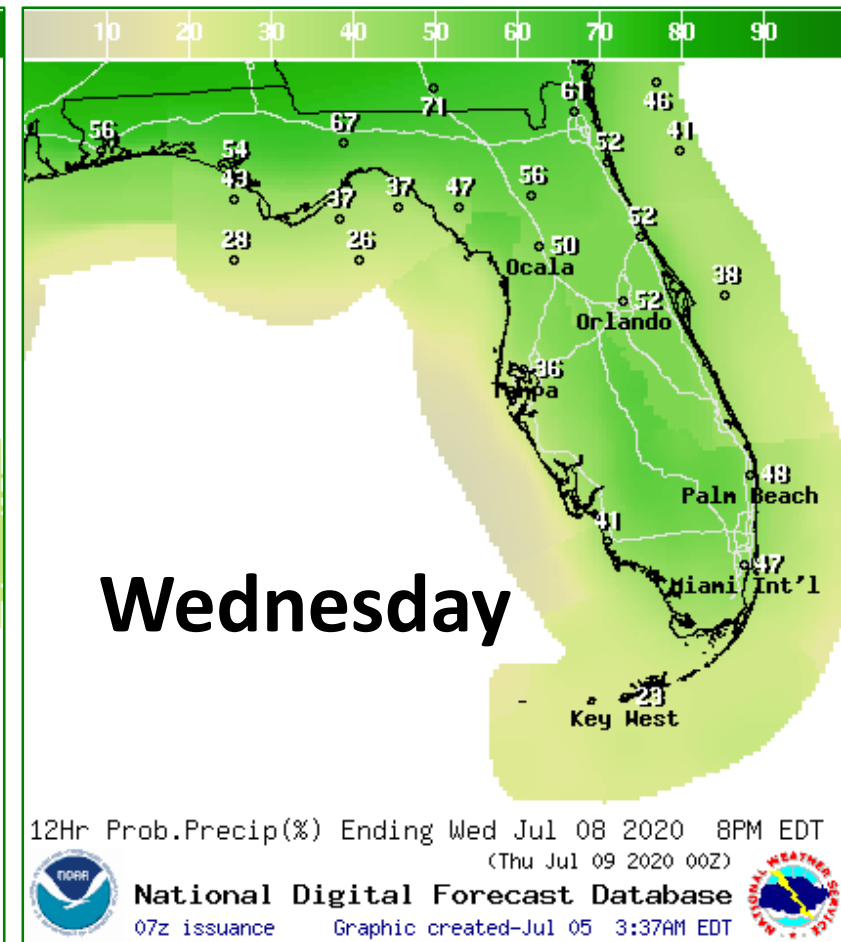
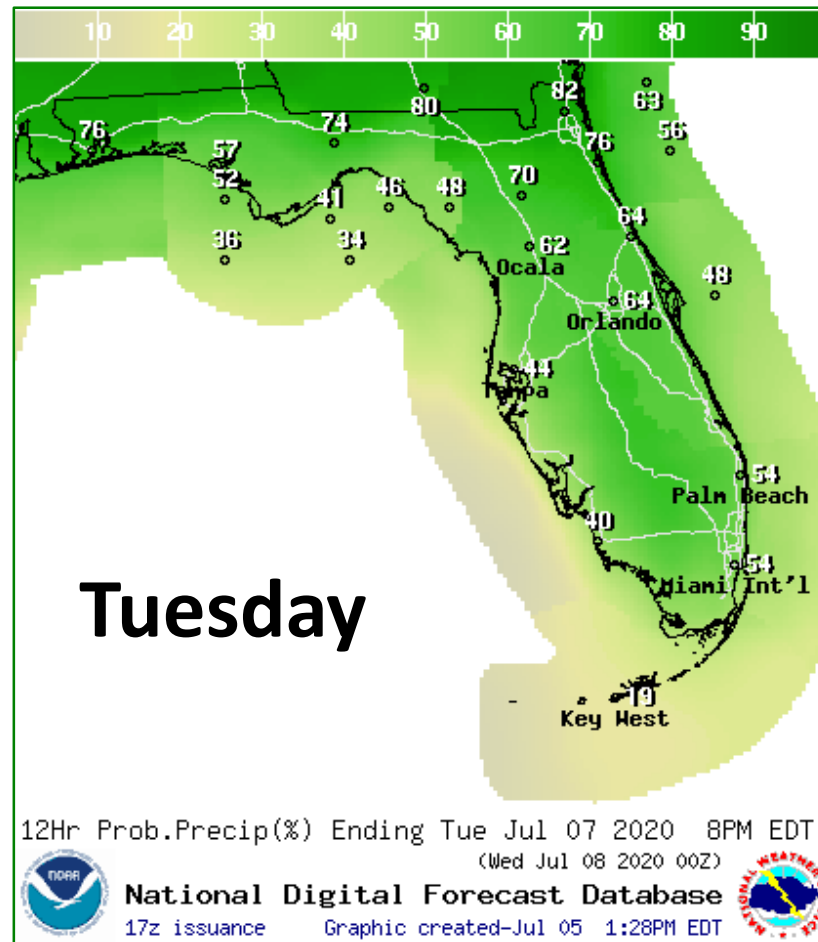
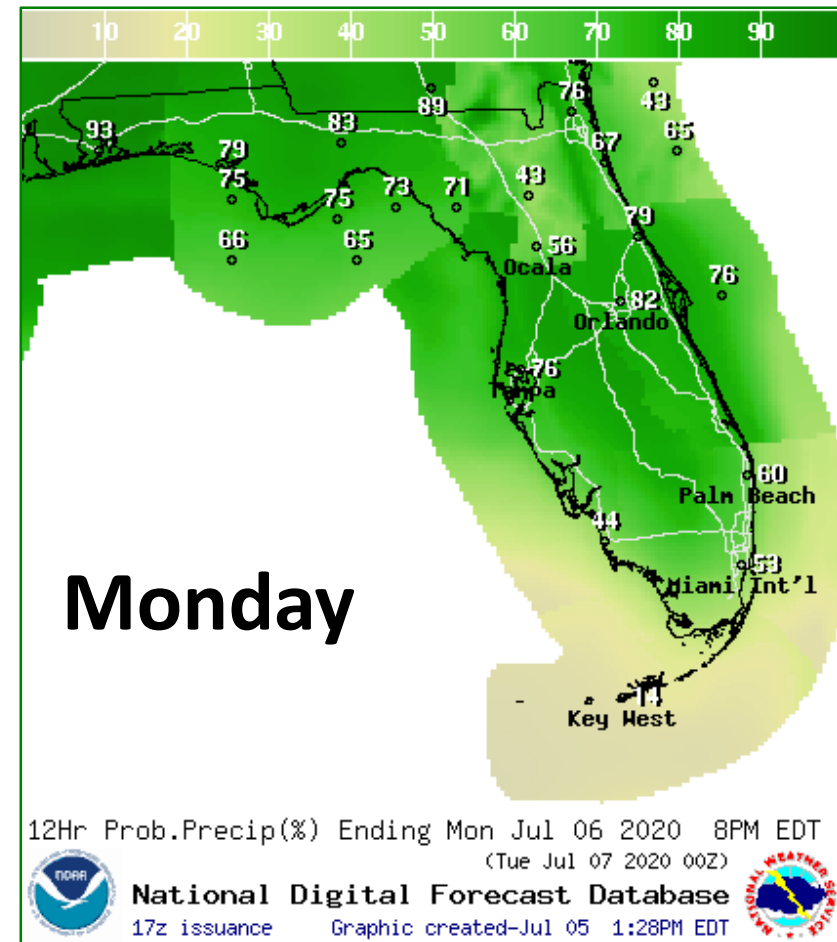
A weak area of low pressure developed overnight along the stationary front that has been across the northern Gulf of Mexico for the last few days.

It will drift to the north and east before moving inland likely on Monday.





Rain Chances Early This Week

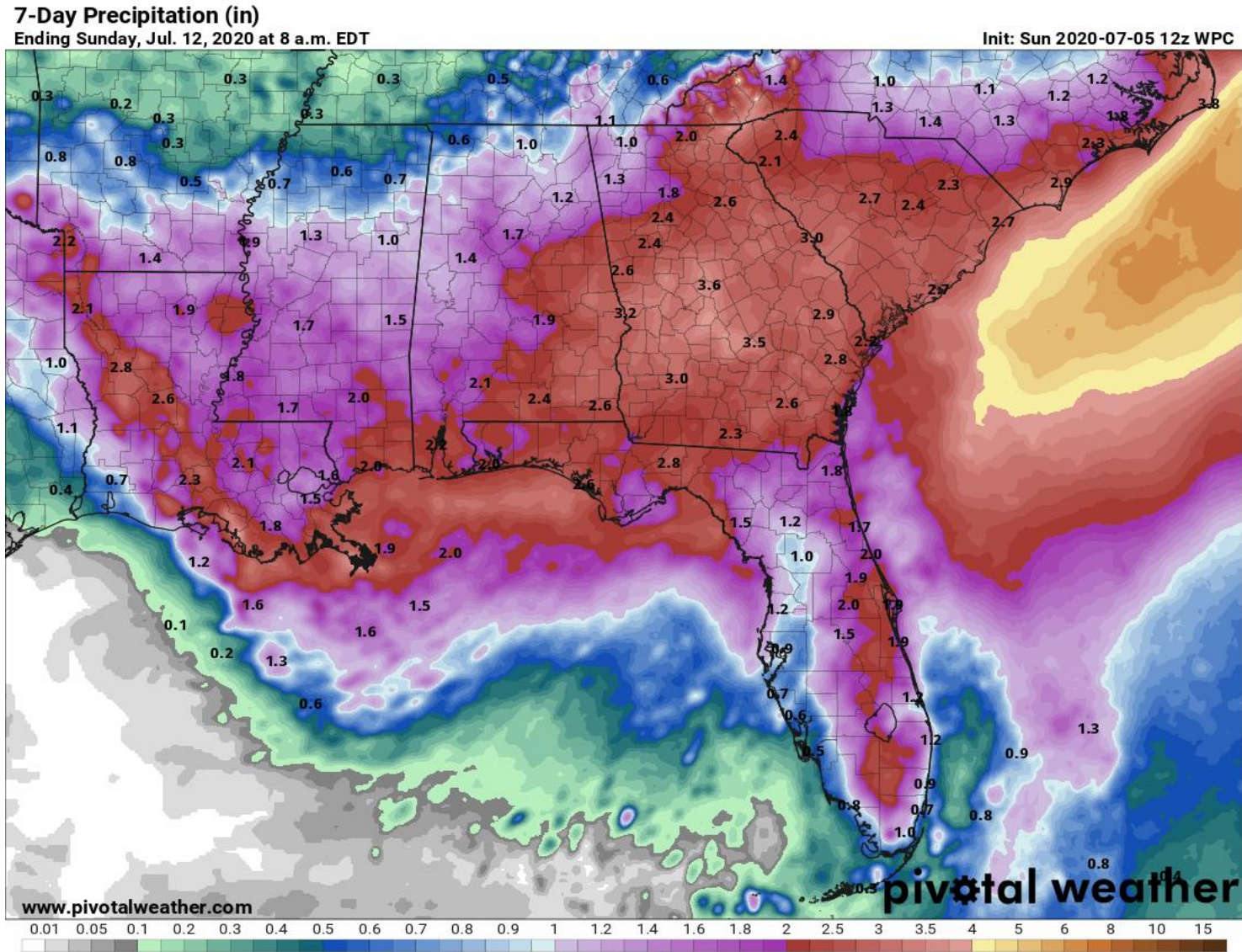


Widespread rain chances continue across the state for a few more days



Forecast Rainfall Totals Next 7 Days

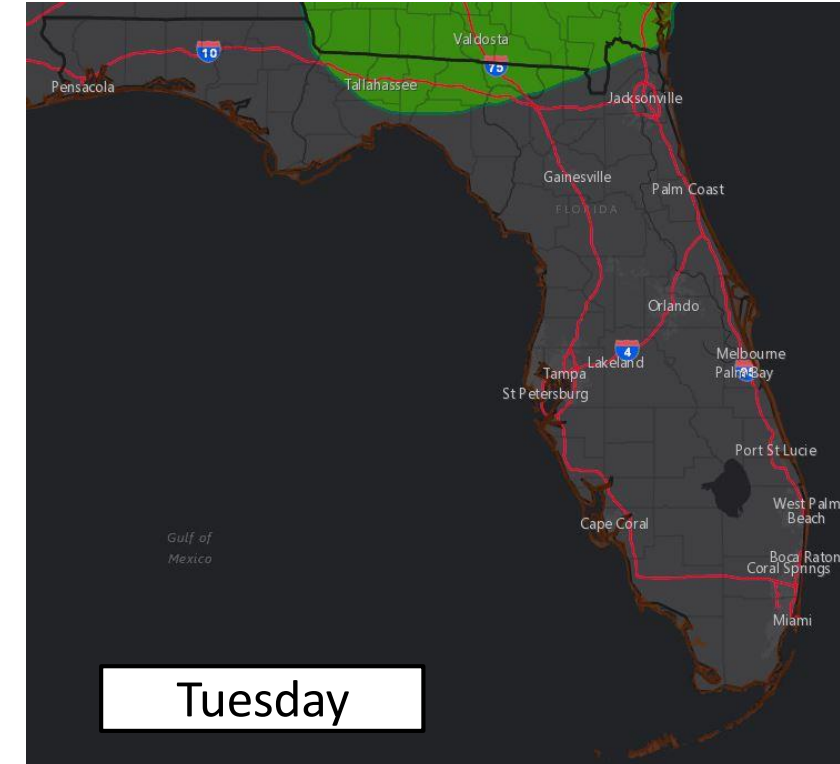
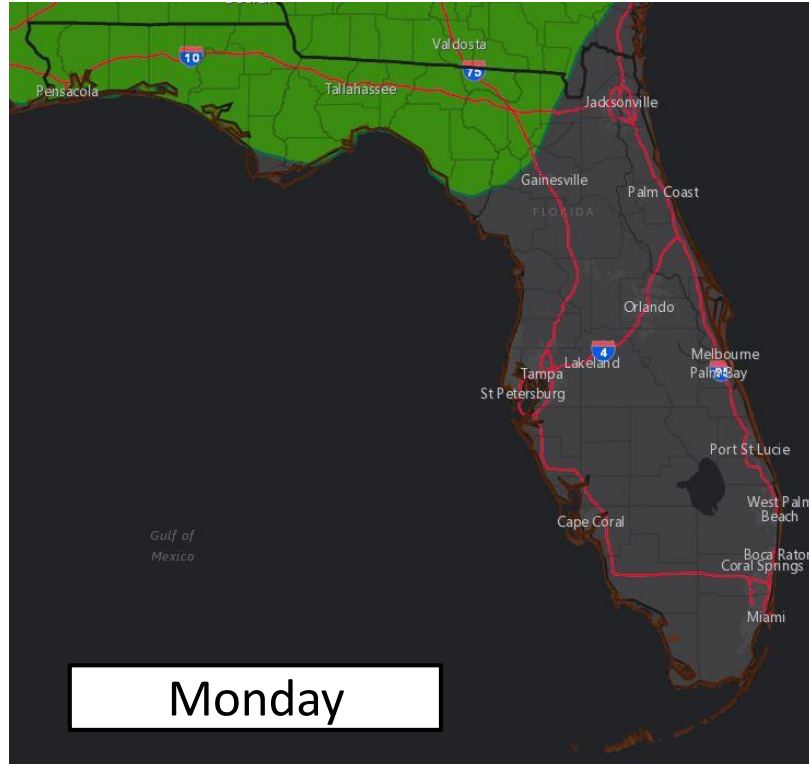
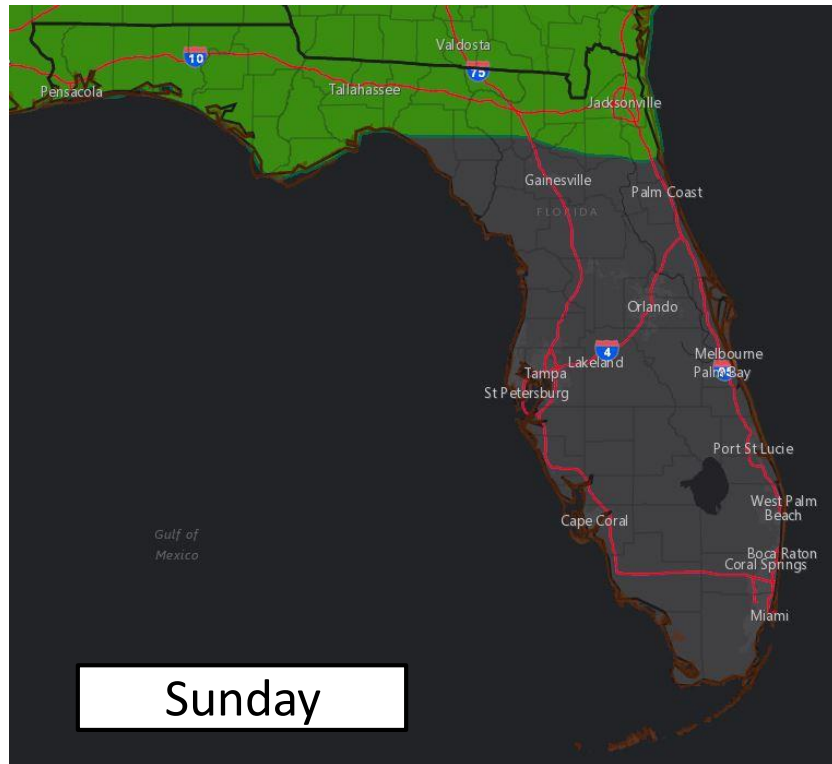
- Widespread 1.5-3" across statewide this week
- Locally heavier rainfall amounts possibly double those totals.
- Slow-moving storms with abundant moisture could produce 1-3" within an hour.
- Isolated Flash flooding possible through the next few days





Flash Flood Outlooks

From the Weather Prediction Center



Risk of rainfall exceeding flash flood guidance within 25 miles of a point to the right of a line

HIGH: > 50%

SLGT: 10%-20%

MDT: 20%-50%

MRGL: 5%-10%



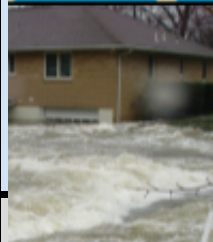
An isolated flash flood will be possible across the state over the next few days, with the best chance across North Florida.



Flash Flood Risk Categories

Understanding the Weather Prediction Center Risk Scale

Understanding WPC Excessive Rainfall Risk Categories

<div>No Area/Label</div> <div>Flash floods are generally not expected.</div> <div>www.wpc.ncep.noaa.gov @NWSWPC</div>	<div>MARGINAL (MRGL)</div> <div>Isolated flash floods possible</div> <div>Localized and primarily affecting places that can experience rapid runoff with heavy rainfall.</div>	<div>SLIGHT (SLGT)</div> <div>Scattered flash floods possible</div> <div>Mainly localized. Most vulnerable are urban areas, roads, small streams and washes. Isolated significant flash floods possible.</div>	<div>MODERATE (MDT)</div> <div>Numerous flash floods likely</div> <div>Numerous flash flooding events with significant events possible. Many streams may flood, potentially affecting larger rivers.</div>	<div>HIGH (HIGH)</div> <div>Widespread flash floods expected</div> <div>Severe, widespread flash flooding. Areas that don't normally experience flash flooding, could. Lives and property in greater danger.</div>	
<div>Flash flooding near me?</div> <div>Flash Flooding</div> <div>NO Flash Flooding</div>					
<div> WEATHER PREDICTION CENTER</div>		<div>Risk of rainfall exceeding flash flood guidance within 25 miles of a point to the right of a line</div> <div>HIGH: > 50%SLGT: 10%-20%</div> <div>MDT: 20%-50%MRGL: 5%-10%</div>			



Overall Summary

Tropical Depression #5

- TD #5 is located about 185 miles northeast of Bermuda and moving to the northeast at 21 mph.
- Maximum sustained winds are near 35 mph, and little strengthening is expected over the next day as it accelerates towards the colder waters of the North Atlantic.
- The next name on the list is Edouard.

Gulf Low

- A weak area of low pressure has developed along a stalled front across the northern Gulf of Mexico.
- Some slight development is possible today and tonight before the system moves inland over the Florida Panhandle on Monday (20%, low chance of tropical development over the next 48 hours).
- Once the system emerges over the southwestern Atlantic later this week off the coast of the Carolinas, additional development is possible (40%, medium chance of tropical development over the next 5 days).

Florida Outlook:

- **Tropical Depression Five will have no impact to Florida.**
- **Regardless of development of the Gulf Low, impacts to Florida remain unchanged with widespread rain chances for the next few days.**
- There is a Marginal Risk of Flash Flooding (level 1 of 4) for the next few days across North Florida.
- Gusty winds and excessive lightning will also accompany any stronger storms.
- Heat index values of 100-107 degrees are still possible before any afternoon thunderstorms in the Peninsula.

The next briefing packet will be sent out Monday morning. For the latest information on the tropics, please visit the National Hurricane Center website at www.hurricanes.gov.



TROPICAL UPDATE



Created by:

Michael Spagnolo, Deputy State Meteorologist

Michael.Spagnolo@em.myflorida.com

State Meteorological Support Unit

Florida Division of Emergency Management

Users wishing to subscribe (approval pending) to this distribution list, register at:

https://public.govdelivery.com/accounts/FLDEM/subscriber/new?topic_id=SERT_Met_Tropics.

Other reports available for subscription are available at:

<https://public.govdelivery.com/accounts/FLDEM/subscriber/new?preferences=true>