



TROPICAL UPDATE



11:00 AM EDT

Sunday, July 5, 2020

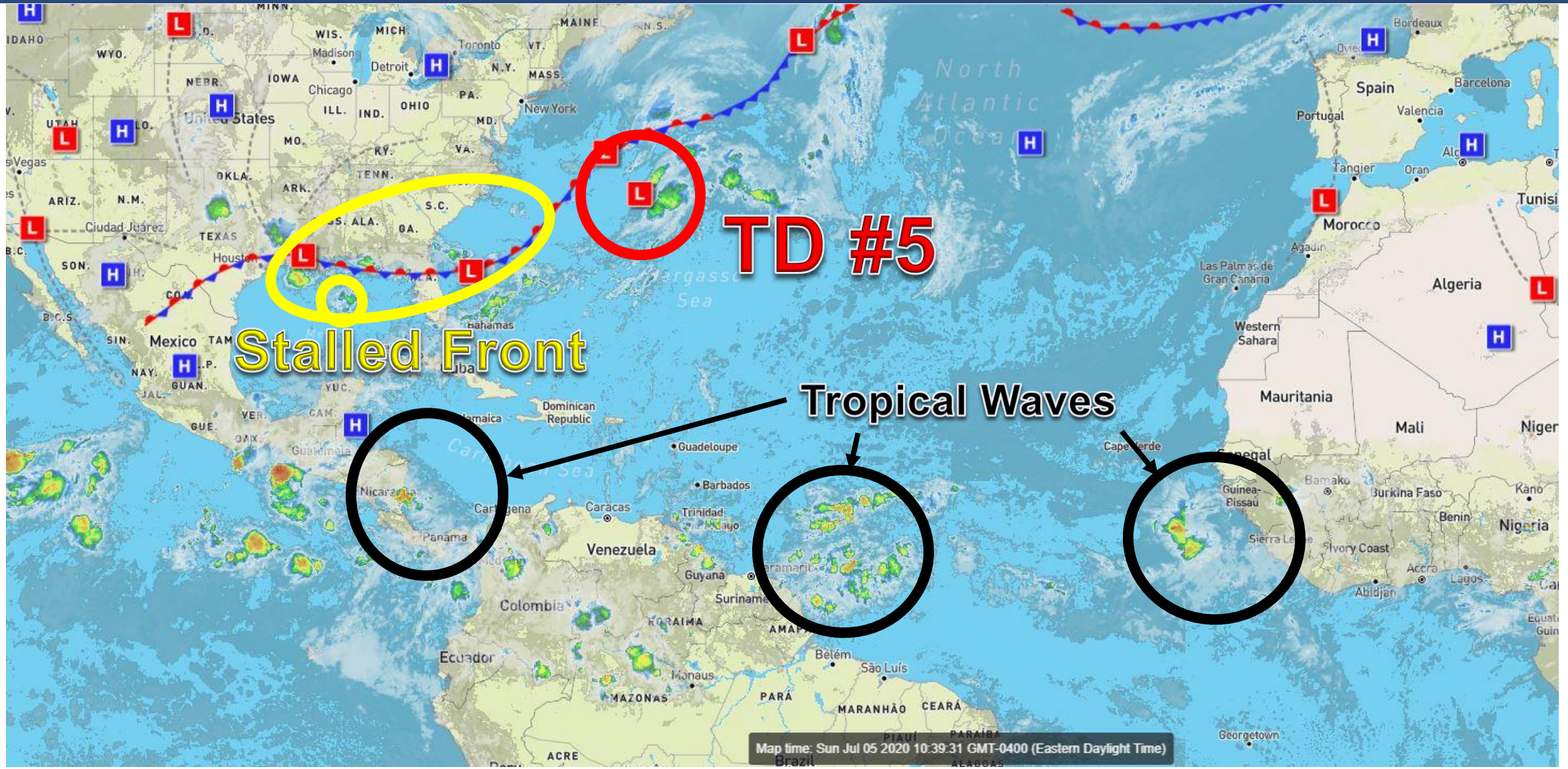
Tropical Depression Five
& Gulf Low (30%)

This update is intended for government and emergency response officials, and is provided for informational and situational awareness purposes only. Forecast conditions are subject to change based on a variety of environmental factors. For additional information, or for any life safety concerns with an active weather event please contact your County Emergency Management or Public Safety Office, local National Weather Service forecast office, or visit the National Hurricane Center website at www.hurricanes.gov.



Atlantic Basin Satellite Image

Chance of development: — None — Low — Medium — High



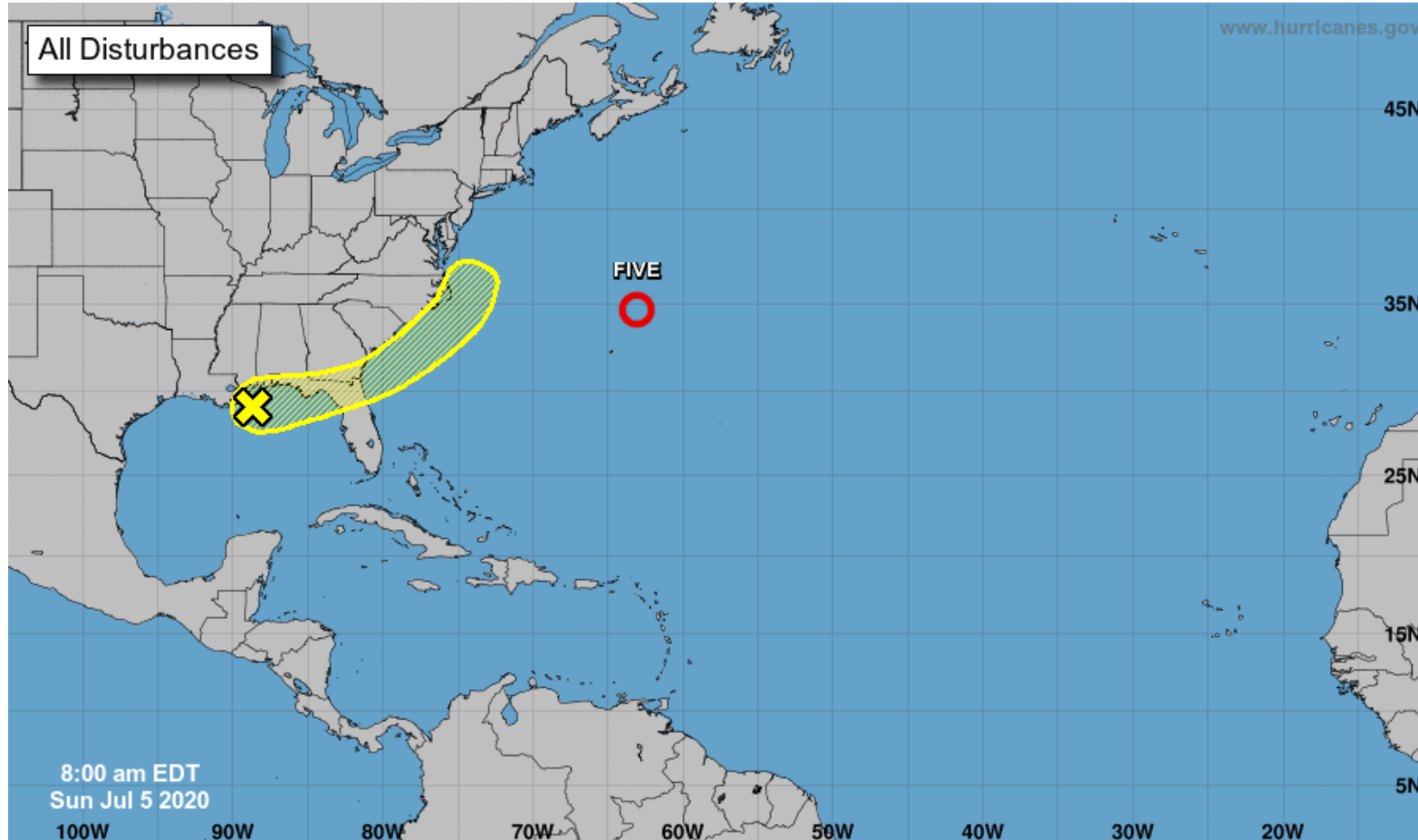


Tropical Weather Outlook

Possible Areas of Development During the Next 5 Days ([LINK](#))



Five-Day Graphical Tropical Weather Outlook National Hurricane Center Miami, Florida



Current Disturbances and Five-Day Cyclone Formation Chance: < 40% 40-60% > 60%
Tropical or Sub-Tropical Cyclone: Depression Storm Hurricane
 Post-Tropical Cyclone or Remnants



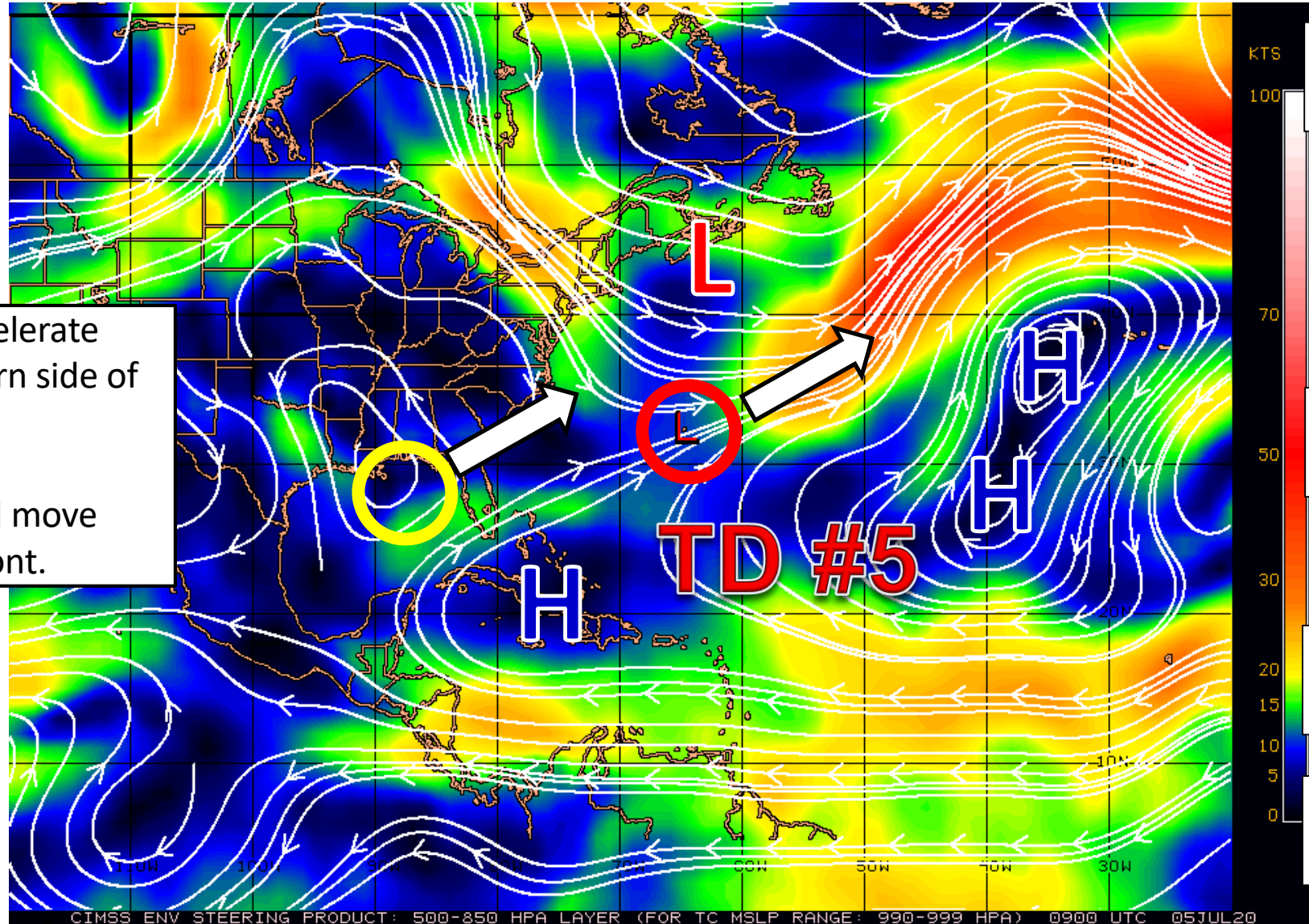
Steering Currents

What is Moving the System?

Color denotes the movement speed through the atmosphere and thin white lines denote direction. Tightly clustered white lines represent faster movement as well.

TD #5 will continue to accelerate northeastward on the western side of high pressure.

The system in the Gulf will move northeast along the front.



Fast Moving Storm

Fast Moving Storm

Typical Moving Storm

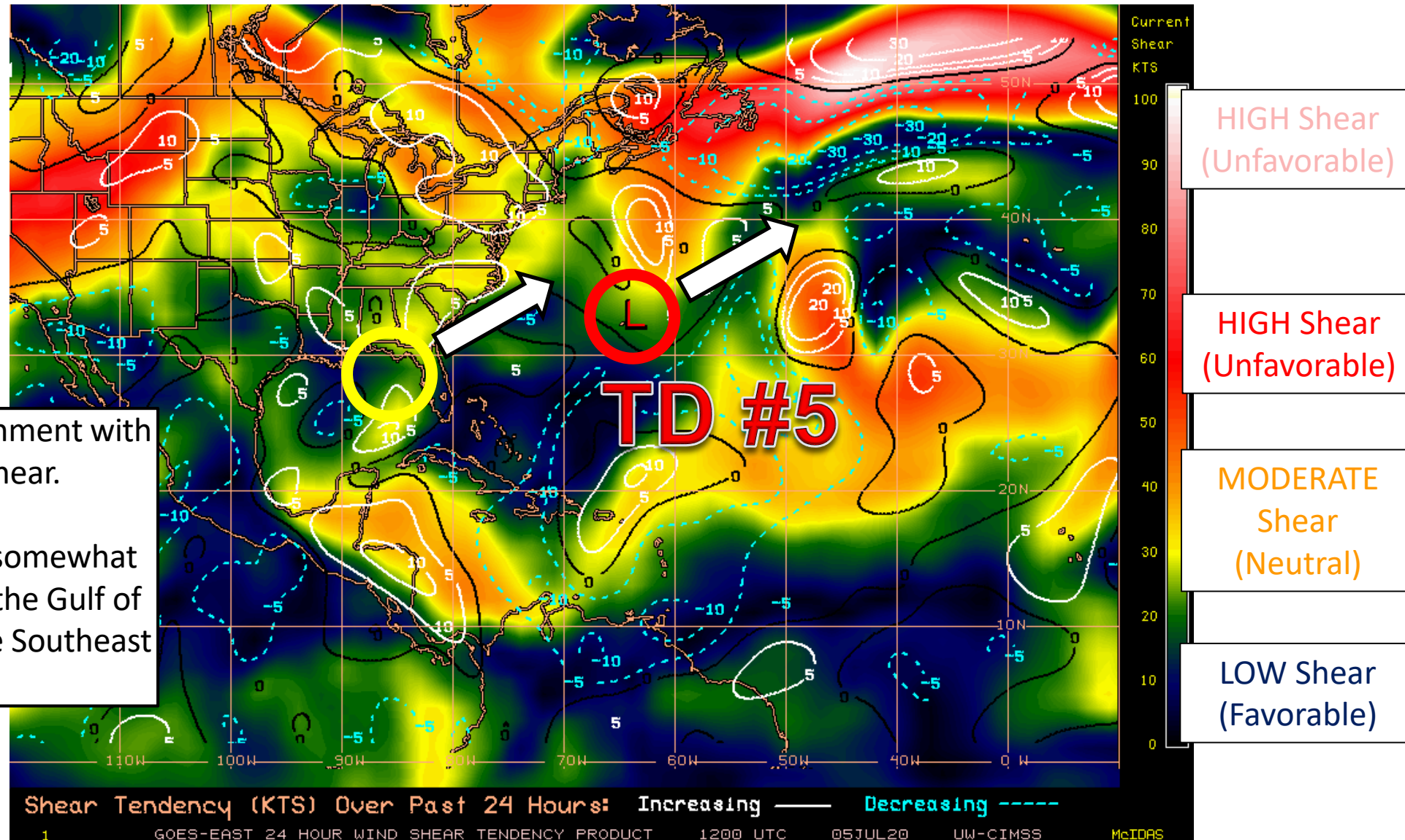
Slow Moving Storm



Wind Shear

Is the environment favorable for the system?

Color denotes the amount of wind shear and the lines denote how it have changed over the last 24 hours (dotted lines show decreasing shear and solid lines show increasing).



TD #5 is moving into an environment with unfavorable high wind shear.

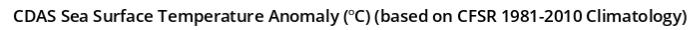
Wind shear remains low and somewhat favorable for development in the Gulf of Mexico and off the coast of the Southeast United States.



Water temperatures are warm enough to support tropical develop across nearly the entire western Atlantic.

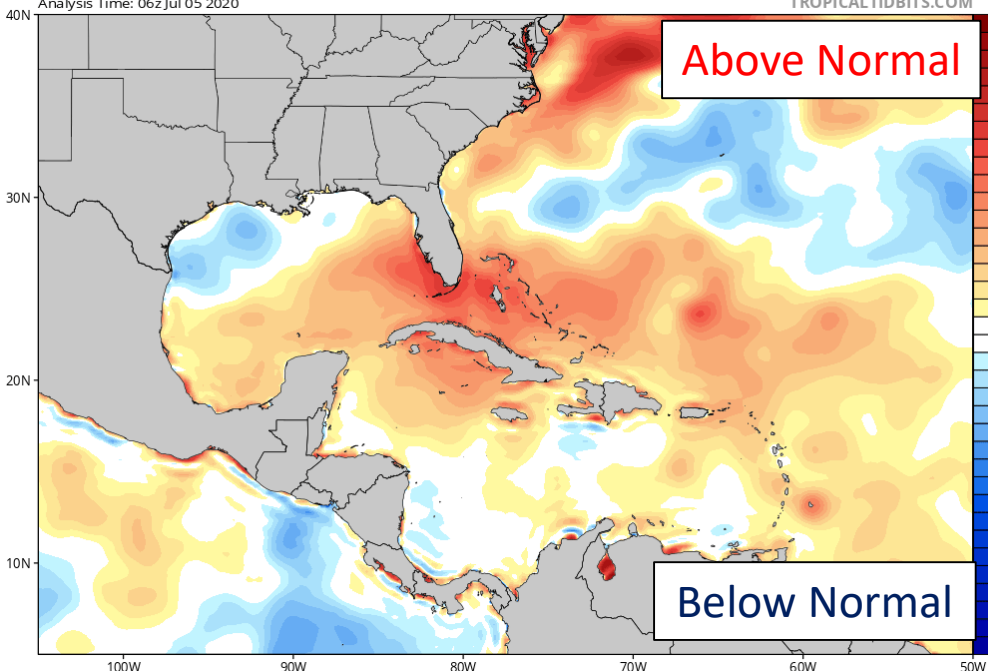
CDAS Sea Surface Temperature (°C)

TROPICALTIDBITS.COM



Analysis Time: 06z Jul 05 2020

Below Normal

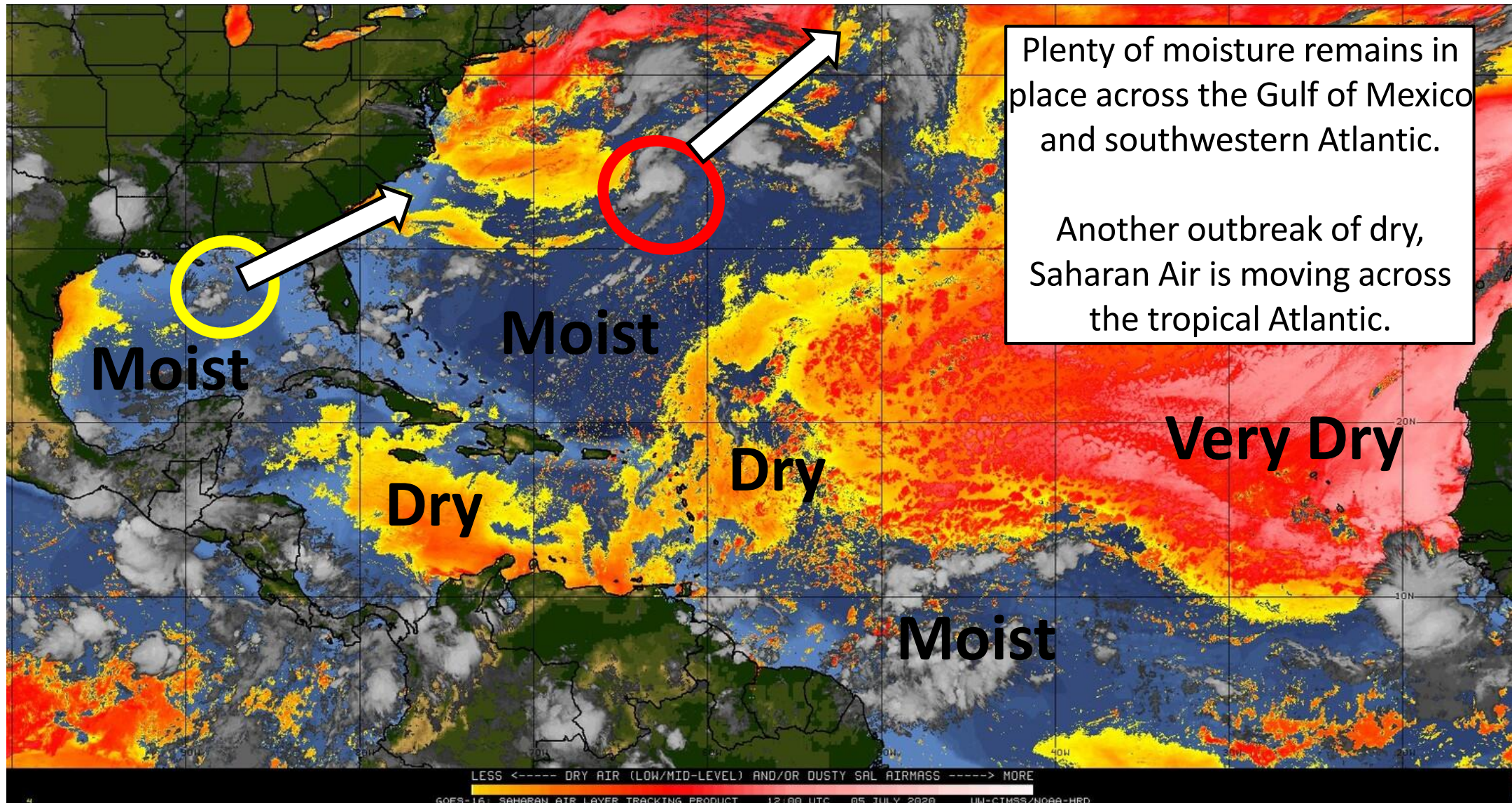




Dry Air & Saharan Dust

Is the environment favorable for the system?

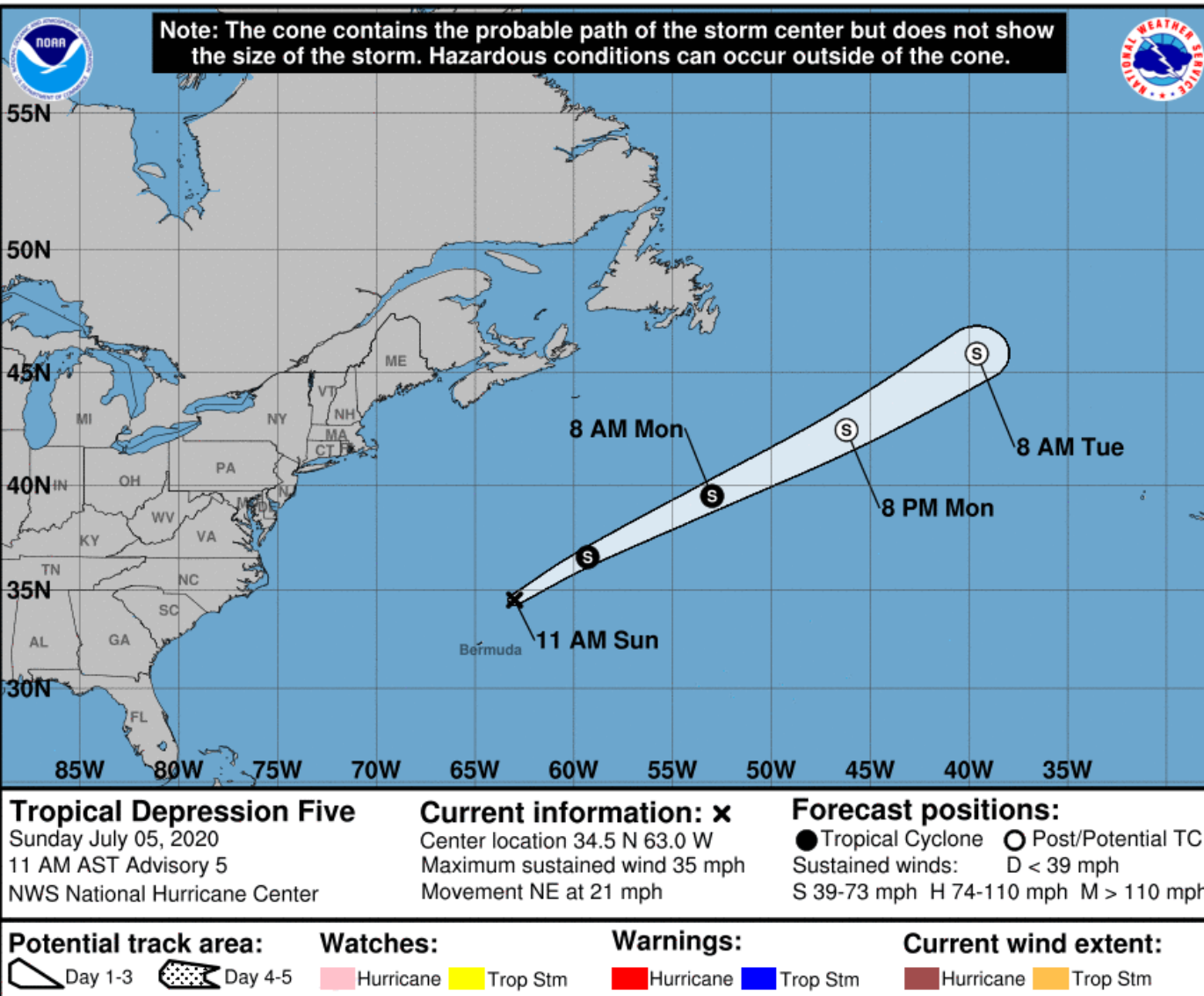
Color denotes concentration of Saharan Dust or dry, stable air.





Official Forecast Track

From the National Hurricane Center



- The center of Tropical Depression #5 is located about 185 miles northeast of Bermuda.
- Maximum sustained winds are near 35 mph.
- TD #5 is moving east-northeast at 21 mph and accelerating
- Little overall change in strength is expected, but the system could become Tropical Storm Edouard later today before becoming extratropical over the cold waters of the North Atlantic on Monday.

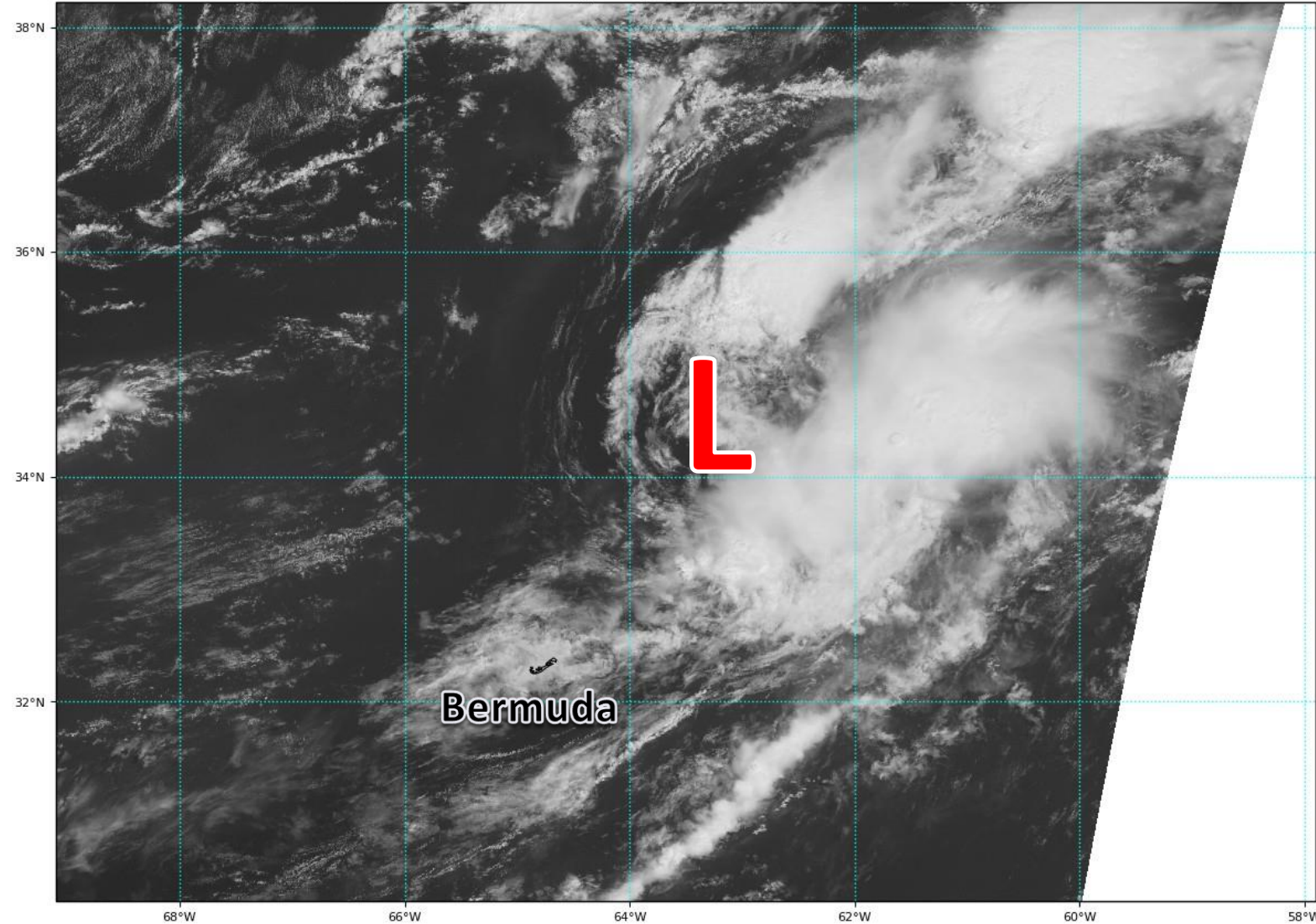


Satellite Imagery

Tropical Depression #5

GOES-16 Channel 2 (visible) Reflectance at 14:52Z Jul 05, 2020

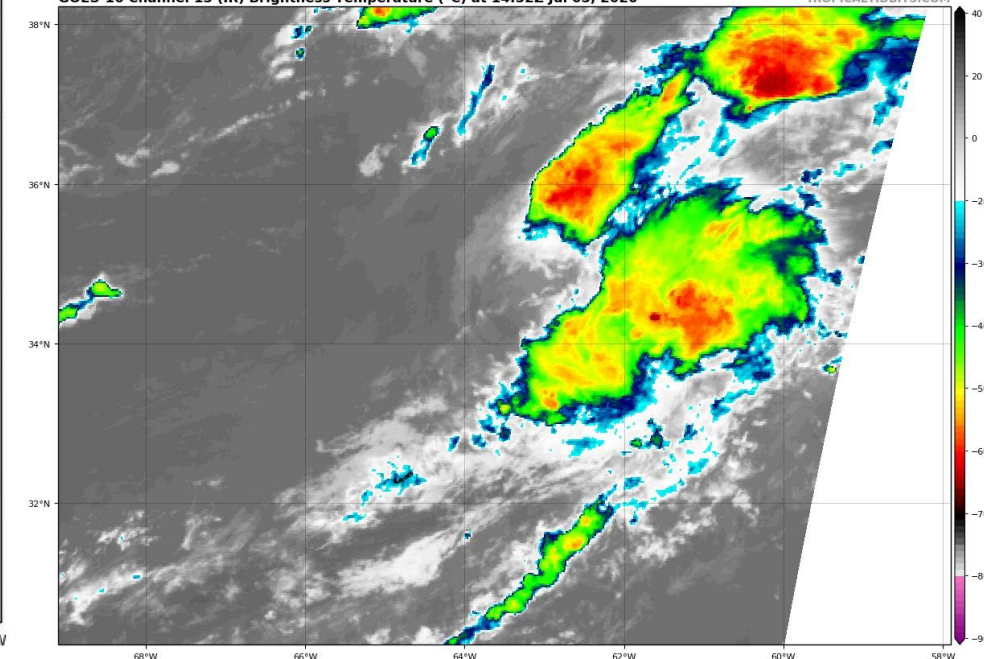
TROPICALTIDBITS.COM



Tropical Depression #5 remains tiny and compact with most of the thunderstorms to the east of the center.

GOES-16 Channel 13 (IR) Brightness Temperature (°C) at 14:52Z Jul 05, 2020

TROPICALTIDBITS.COM





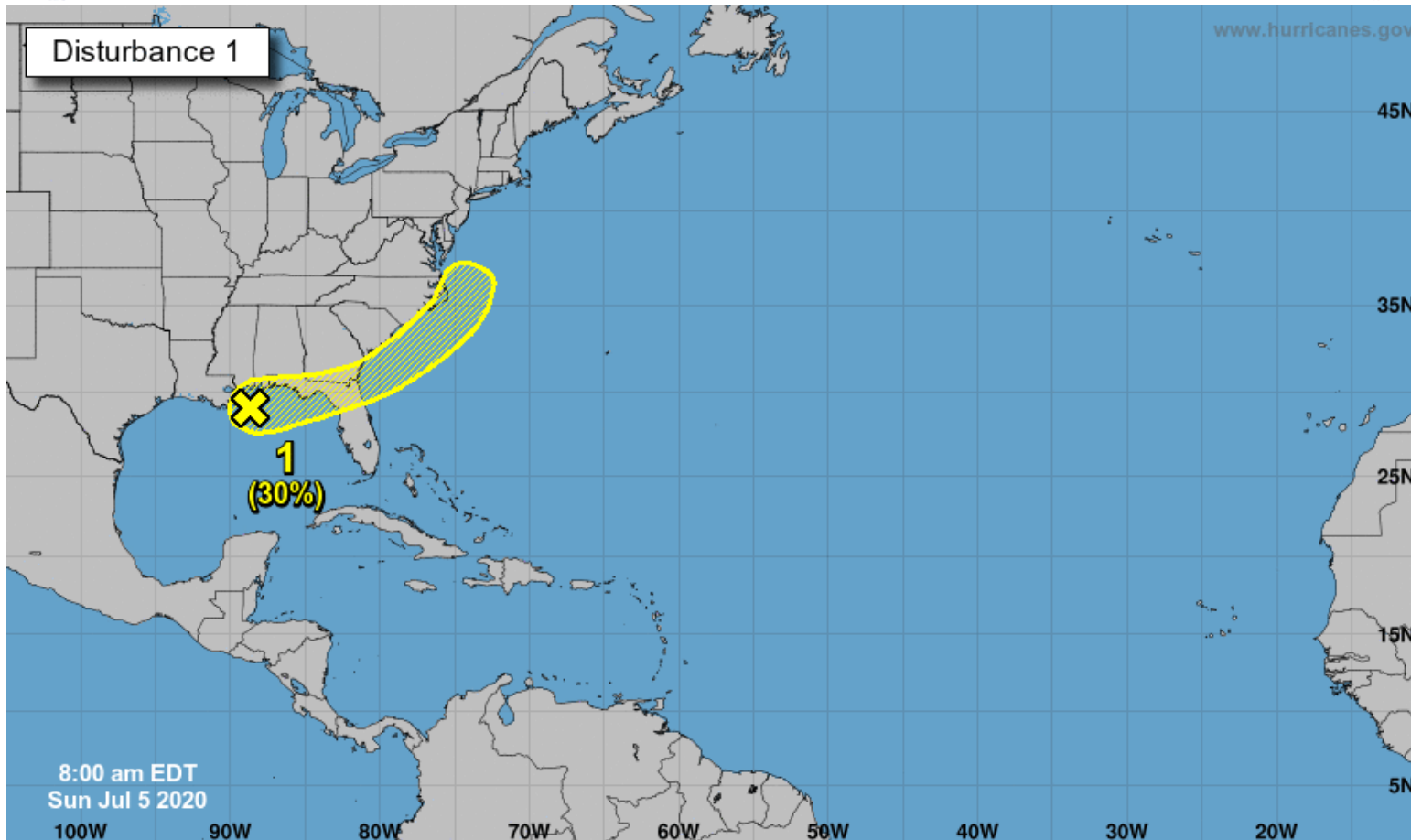
Tropical Weather Outlook

Possible Areas of Development During the Next 5 Days ([LINK](#))



Five-Day Graphical Tropical Weather Outlook

National Hurricane Center Miami, Florida



1. A broad area of low pressure located along the northern Gulf Coast is producing disorganized showers and a few thunderstorms. **Some slight development of this system is possible before the disturbance moves onshore along the northeastern Gulf Coast on Monday.** The system is then forecast to move northeastward and could emerge offshore of the Carolinas later this week, where environmental conditions are expected to be more conducive for development.

***Formation chance through 48 hours...low...10 percent.**

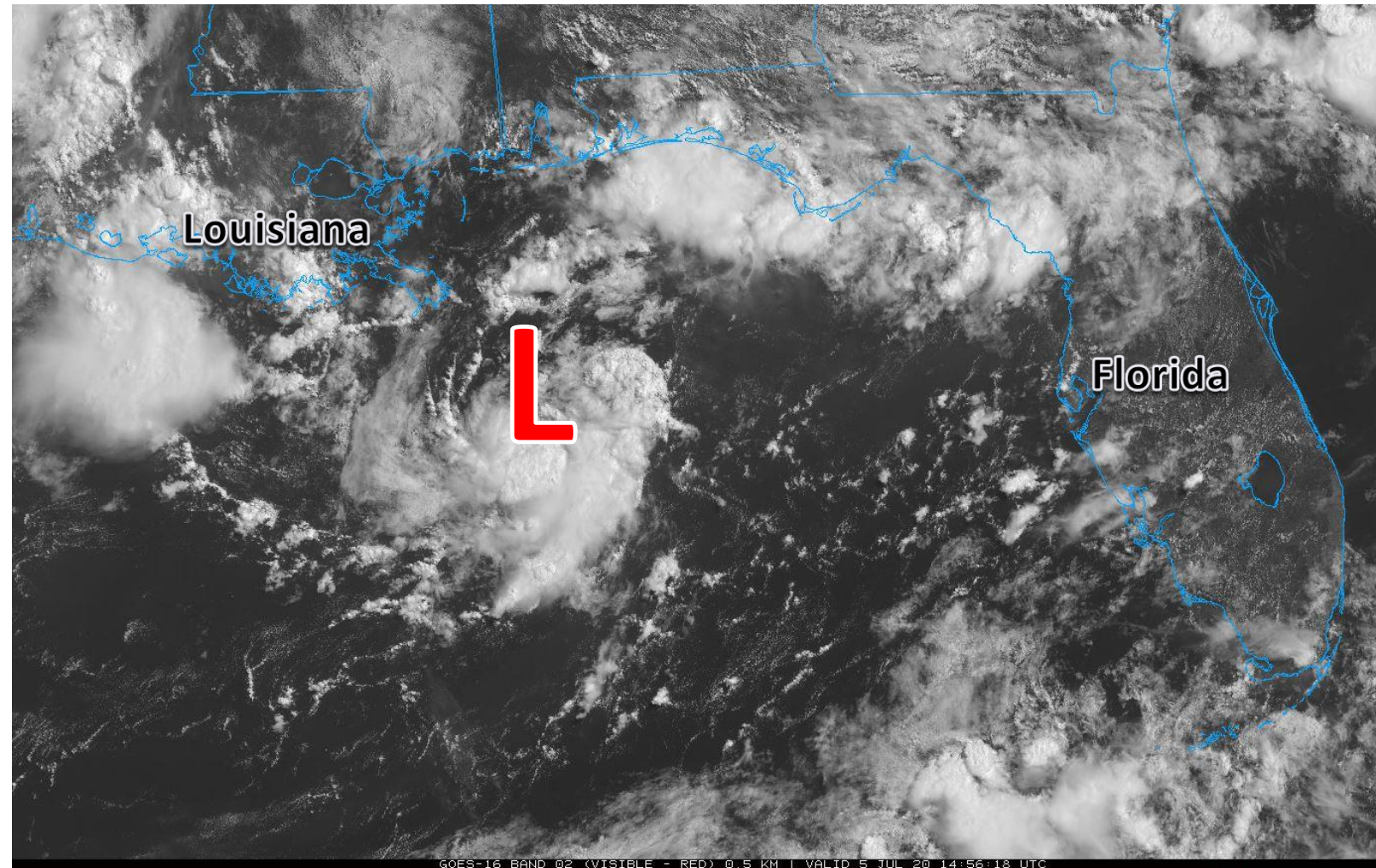
***Formation chance through 5 days...low...30 percent.**

Current Disturbances and Five-Day Cyclone Formation Chance:
 Tropical or Sub-Tropical Cyclone:
 < 40% 40-60% > 60%
 Depression Storm Hurricane
 Post-Tropical Cyclone or Remnants



Satellite Imagery

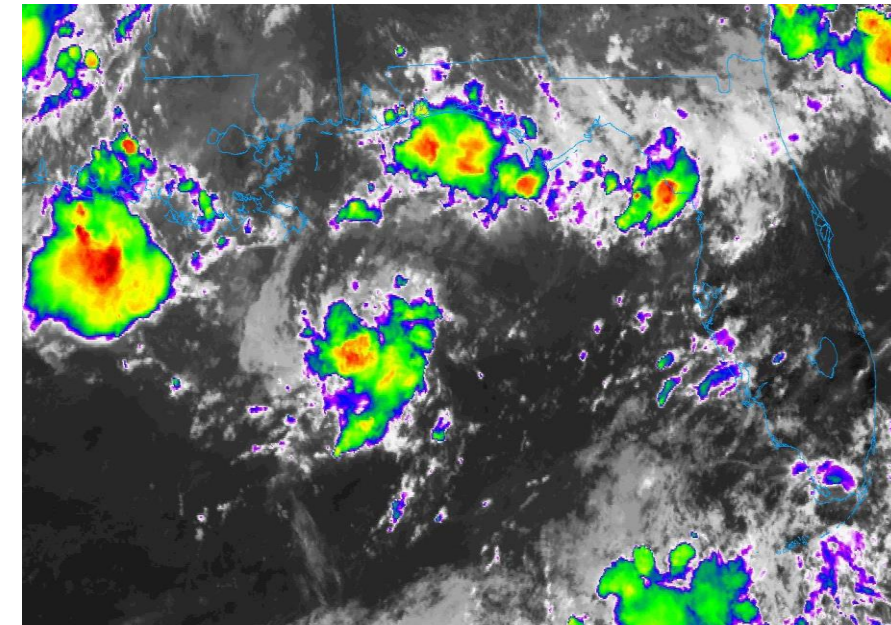
Gulf Low (30%)



GOES-16 BAND 02 (VISIBLE - RED) 0.5 KM 1 VALID 5 JUL 20 14:56:18 UTC

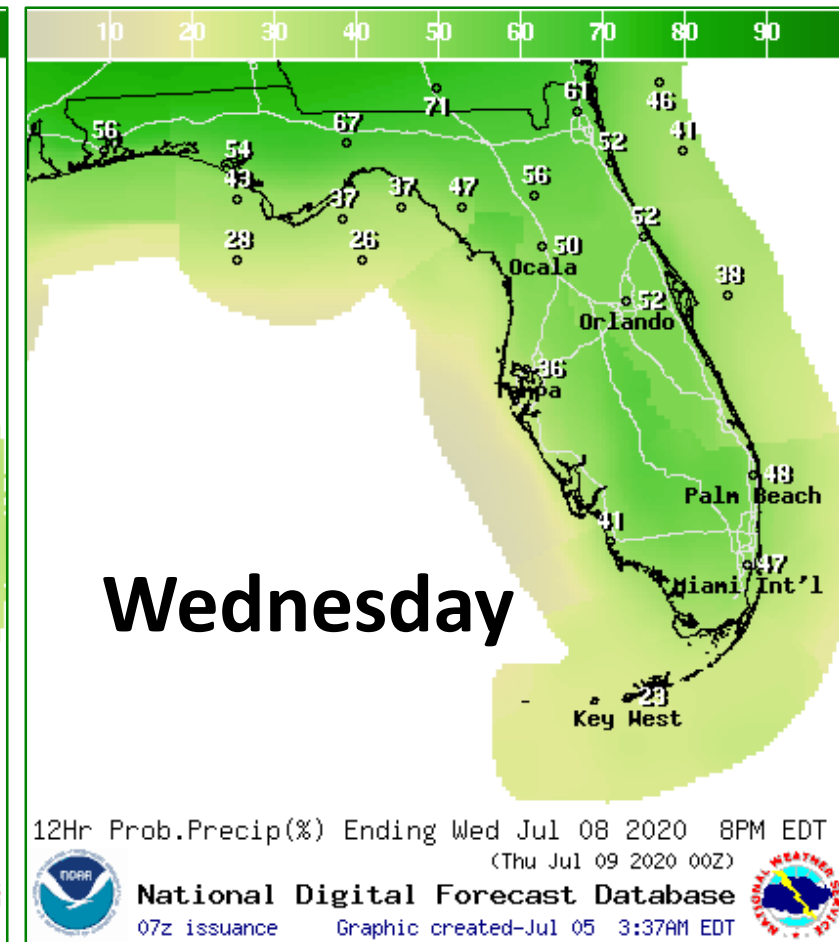
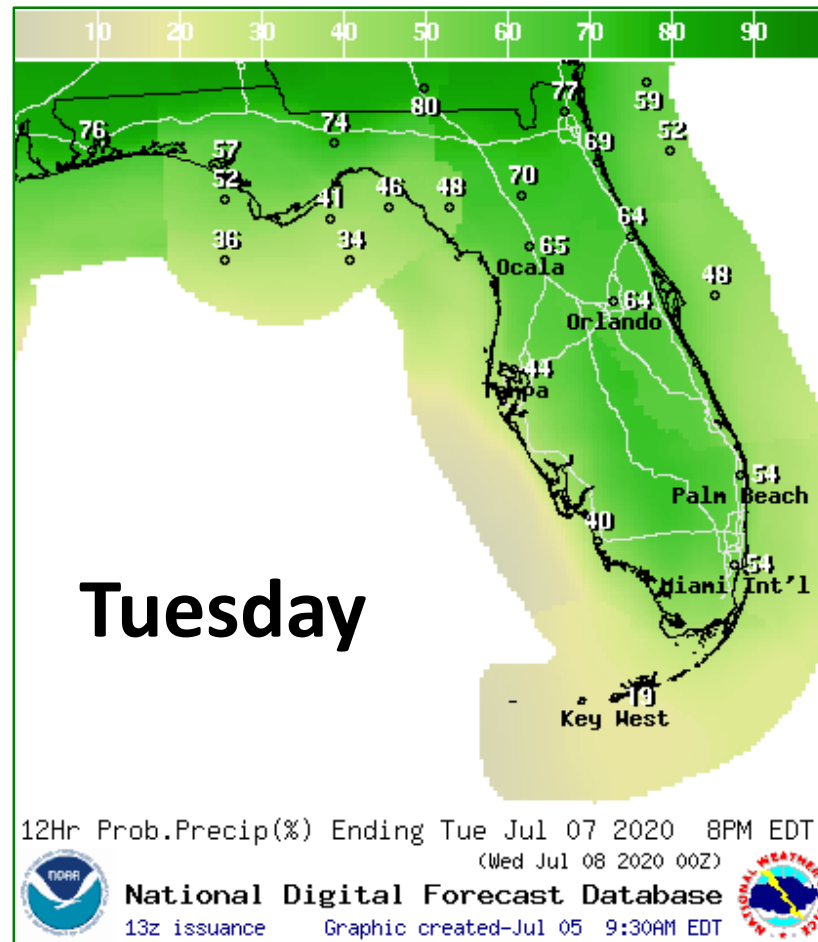
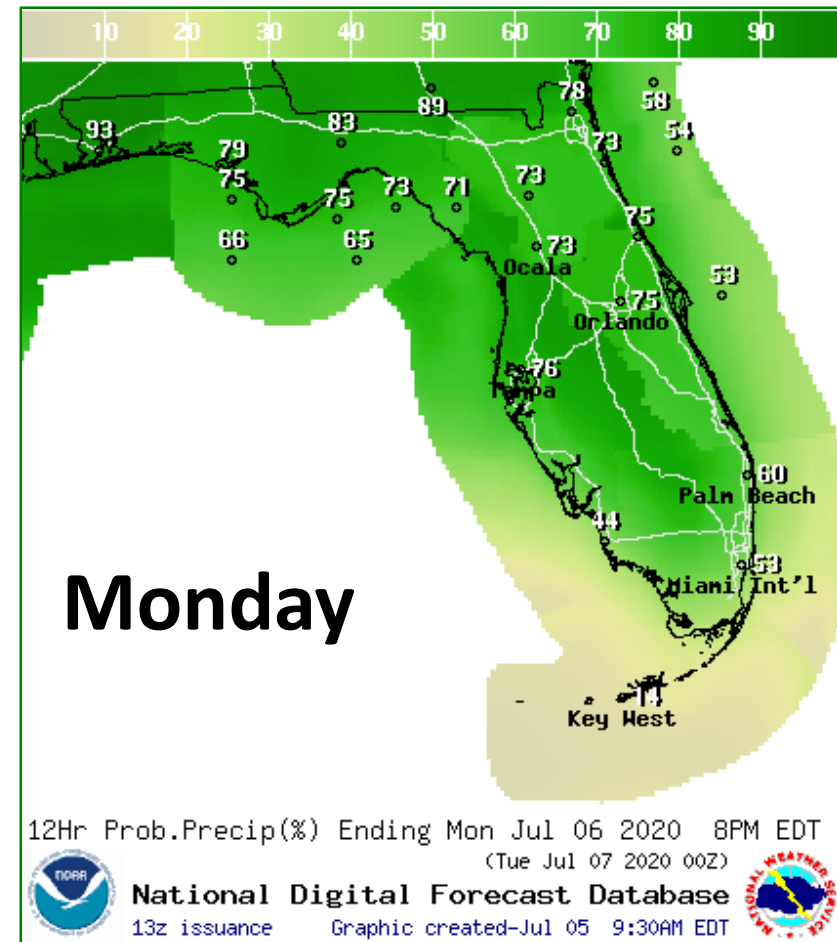
A weak area of low pressure developed overnight along the stationary front that has been across the northern Gulf of Mexico for the last few days.

It will drift to the north and east before moving inland likely on Monday.





Rain Chances Early This Week

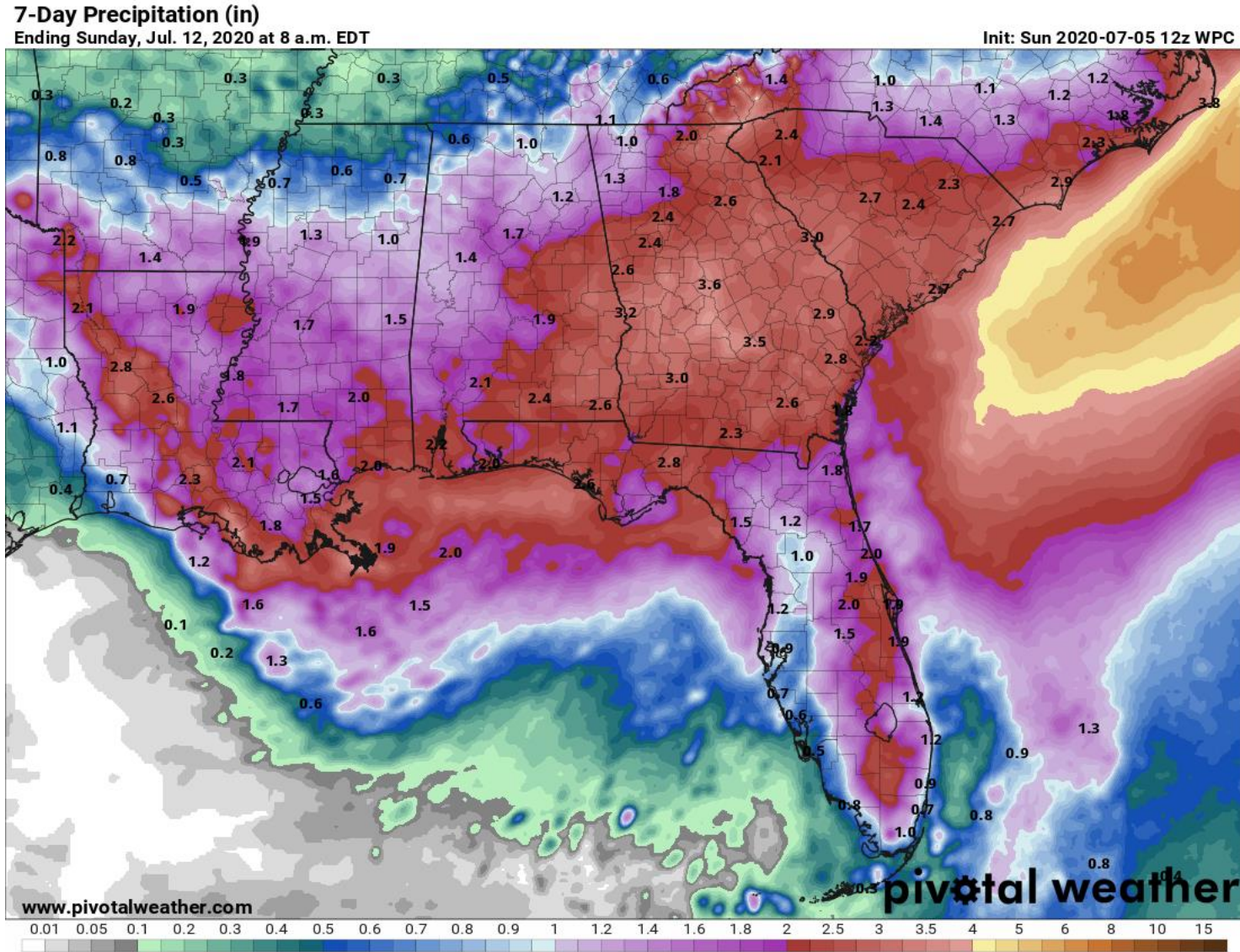


Widespread rain chances continue across the state for a few more days



Forecast Rainfall Totals Next 7 Days

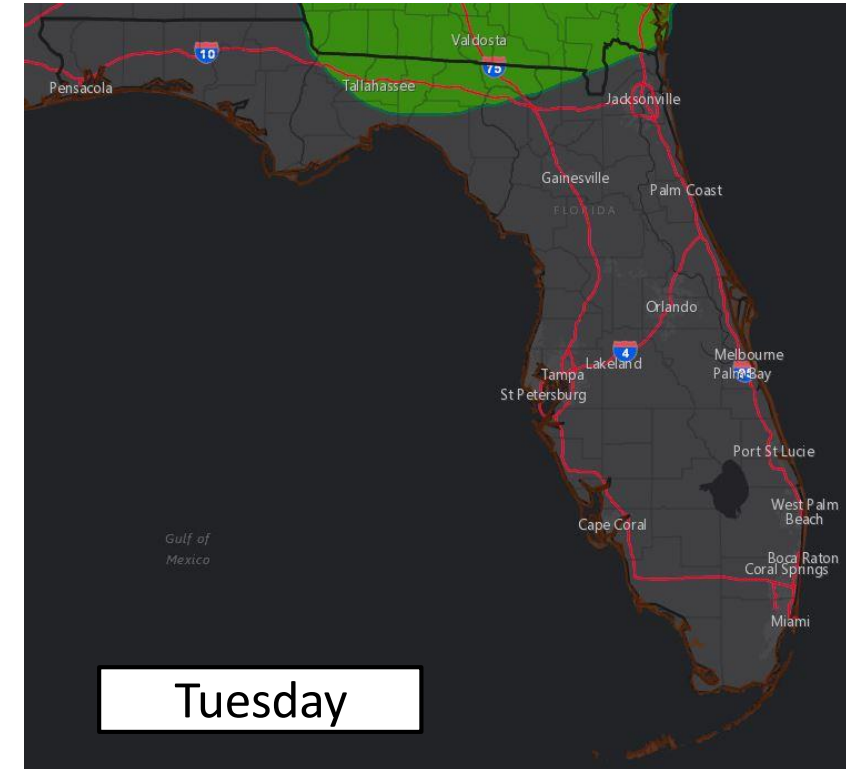
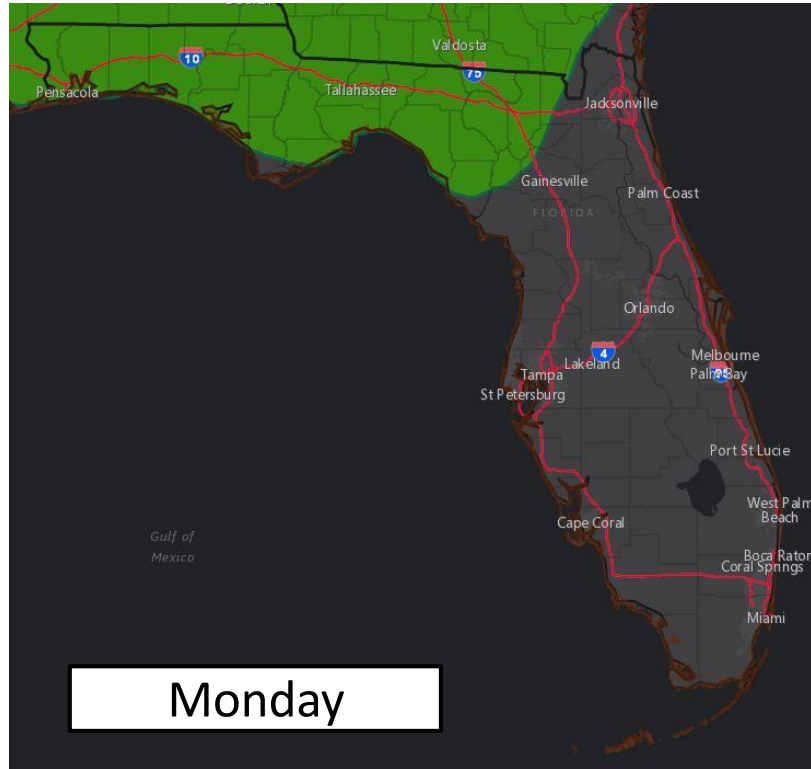
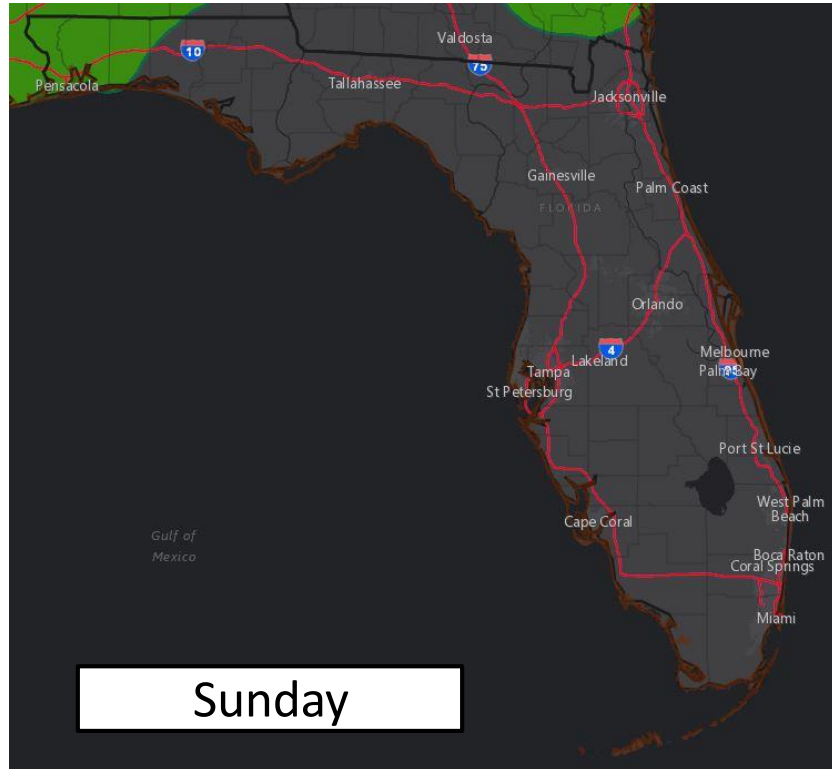
- Widespread 1.5-3" across statewide this week
- Locally heavier rainfall amounts possibly double those totals.
- Slow-moving storms with abundant moisture could produce 1-3" within an hour.
- Isolated Flash flooding possible through the next few days





Flash Flood Outlooks

From the Weather Prediction Center



Risk of rainfall exceeding flash flood guidance within 25 miles of a point to the right of a line

HIGH: > 50%

SLGT: 10%-20%

MDT: 20%-50%

MRGL: 5%-10%



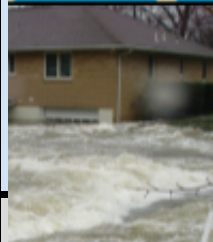
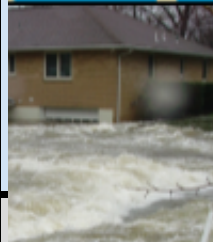
An isolated flash flood will be possible across the state over the next few days, with the best chance across North Florida.



Flash Flood Risk Categories

Understanding the Weather Prediction Center Risk Scale

Understanding WPC Excessive Rainfall Risk Categories

<div>No Area/Label</div> <div>Flash floods are generally not expected.</div> <div>www.wpc.ncep.noaa.gov @NWSWPC</div>	<div>MARGINAL (MRGL)</div> <div>Isolated flash floods possible</div> <div>Localized and primarily affecting places that can experience rapid runoff with heavy rainfall.</div>	<div>SLIGHT (SLGT)</div> <div>Scattered flash floods possible</div> <div>Mainly localized. Most vulnerable are urban areas, roads, small streams and washes. Isolated significant flash floods possible.</div>	<div>MODERATE (MDT)</div> <div>Numerous flash floods likely</div> <div>Numerous flash flooding events with significant events possible. Many streams may flood, potentially affecting larger rivers.</div>	<div>HIGH (HIGH)</div> <div>Widespread flash floods expected</div> <div>Severe, widespread flash flooding. Areas that don't normally experience flash flooding, could. Lives and property in greater danger.</div>	
<div>Flash flooding near me?</div> <div>Flash Flooding</div> <div>NO Flash Flooding</div>					
<div><div>WEATHER PREDICTION CENTER</div></div>		<div>Risk of rainfall exceeding flash flood guidance within 25 miles of a point to the right of a line</div> <div>HIGH: > 50%SLGT: 10%-20%</div> <div>MDT: 20%-50%MRGL: 5%-10%</div>			



Overall Summary

Tropical Depression #5

- TD #5 is located about 185 miles northeast of Bermuda and moving to the northeast at 21 mph.
- Maximum sustained winds are near 35 mph, and little strengthening is expected over the next day as it accelerates towards the colder waters of the North Atlantic.
- The next name on the list is Edouard.

Gulf Low

- A weak area of low pressure has developed along a stalled front across the northern Gulf of Mexico.
- Some slight development is possible today and Monday before the system moves inland over the northeastern Gulf (10% chance).
- Once the system emerges over the southwestern Gulf of Mexico later this week, additional development is possible (30% chance).

Florida Outlook:

- **Tropical Depression Five will have no impact to Florida.**
- **Regardless of development of the Gulf Low, impacts to Florida remain similar with widespread rain chances for the next few days.**
- There is a Marginal Risk of Flash Flooding (level 1 of 4) for the next few days across North Florida.
- Gusty winds and excessive lightning will also accompany any stronger storms.
- Heat index values of 100-107 degrees are still possible outside of thunderstorms in the Peninsula.

The next briefing packet will be sent out this afternoon if development chances in the Gulf increase. Otherwise, the next full packet will be provided Monday morning. For the latest information on the tropics, please visit the National Hurricane Center website at www.hurricanes.gov.



TROPICAL UPDATE



Created by:

Michael Spagnolo, Deputy State Meteorologist

Michael.Spagnolo@em.myflorida.com

State Meteorological Support Unit

Florida Division of Emergency Management

Users wishing to subscribe (approval pending) to this distribution list, register at:

https://public.govdelivery.com/accounts/FLDEM/subscriber/new?topic_id=SERT_Met_Tropics.

Other reports available for subscription are available at:

<https://public.govdelivery.com/accounts/FLDEM/subscriber/new?preferences=true>