



TROPICAL UPDATE



10:30 AM EDT

Sunday, June 28, 2020

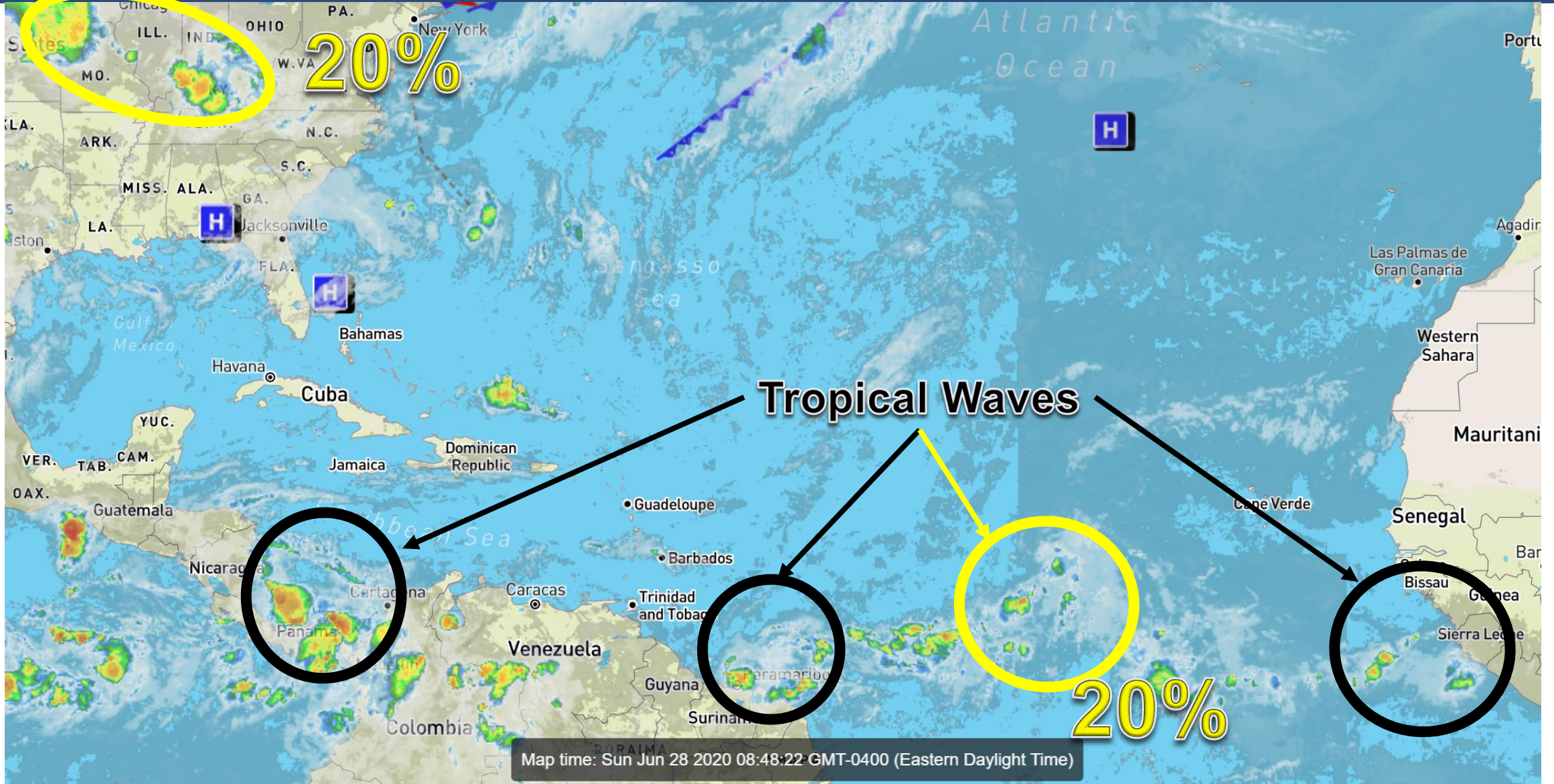
Invest 96L (20%) &
East Coast Low (20%)

This update is intended for government and emergency response officials, and is provided for informational and situational awareness purposes only. Forecast conditions are subject to change based on a variety of environmental factors. For additional information, or for any life safety concerns with an active weather event please contact your County Emergency Management or Public Safety Office, local National Weather Service forecast office, or visit the National Hurricane Center website at www.hurricanes.gov.



Atlantic Basin Satellite Image

Chance of development: — None — Low — Medium — High

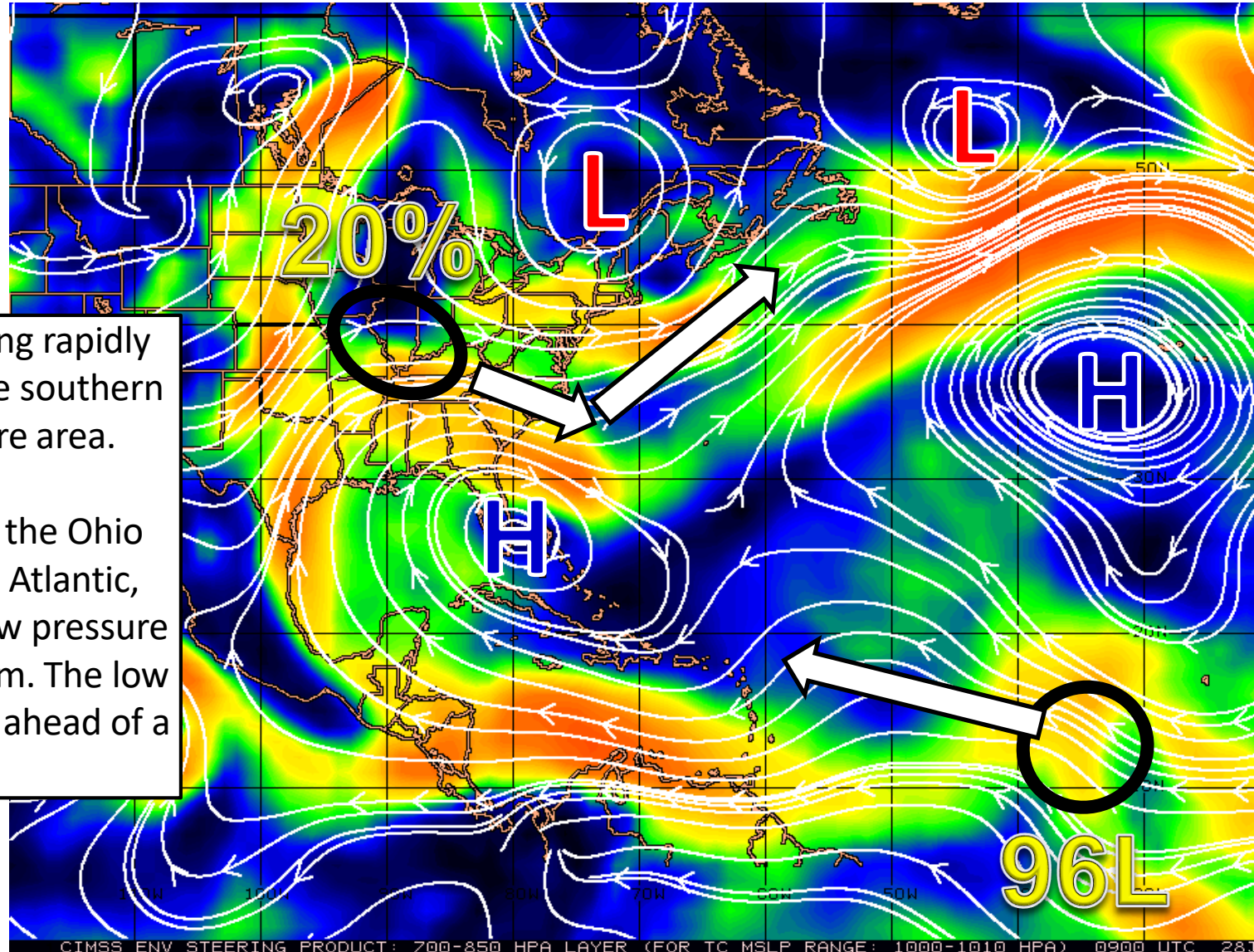




Steering Currents

What is Moving the System?

Color denotes the movement speed through the atmosphere and thin white lines denote direction. Tightly clustered white lines represent faster movement as well.



Fast Moving Storm

Fast Moving Storm

Typical Moving Storm

Slow Moving Storm

Invest 96L will continue moving rapidly west-northwestward along the southern edge of a large high pressure area.

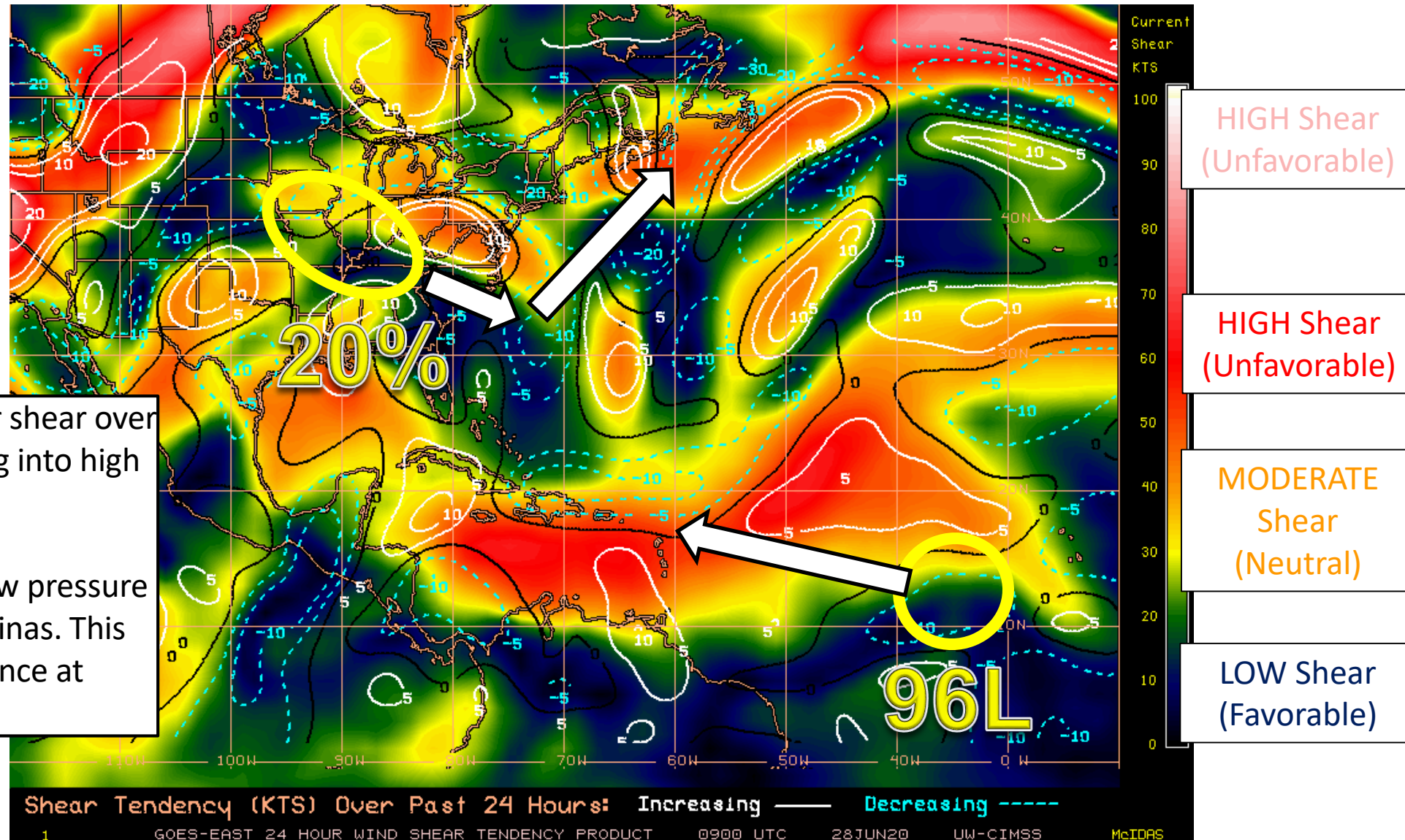
Disturbances will move from the Ohio River Valley into the western Atlantic, which may cause an area of low pressure to develop over the Gulf Stream. The low will then move northeastward ahead of a cold front.



Wind Shear

Is the environment favorable for the system?

Color denotes the amount of wind shear and the lines denote how it have changed over the last 24 hours (dotted lines show decreasing shear and solid lines show increasing).

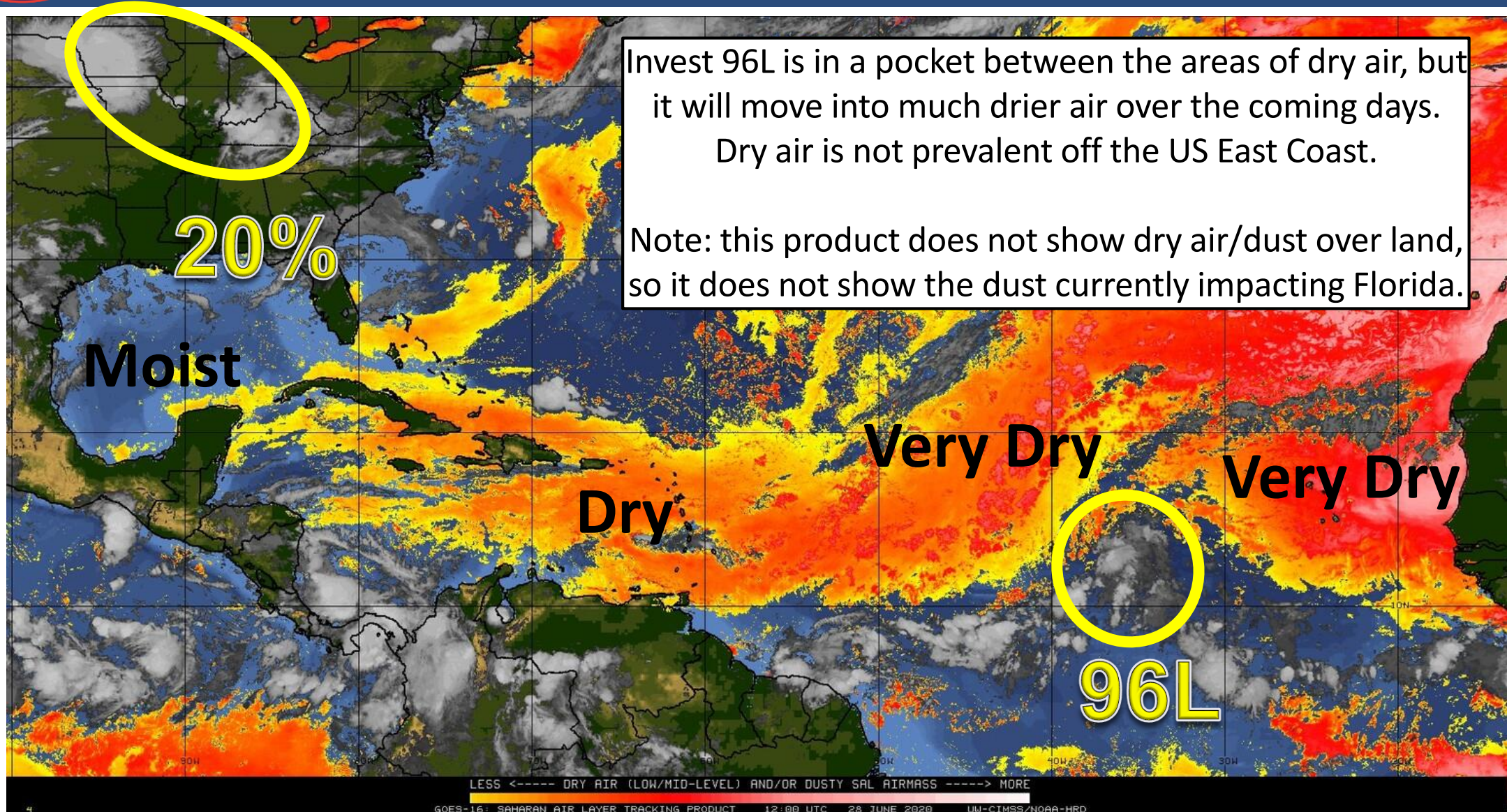




Dry Air & Saharan Dust

Is the environment favorable for the system?

Color denotes concentration of Saharan Dust or dry, stable air.





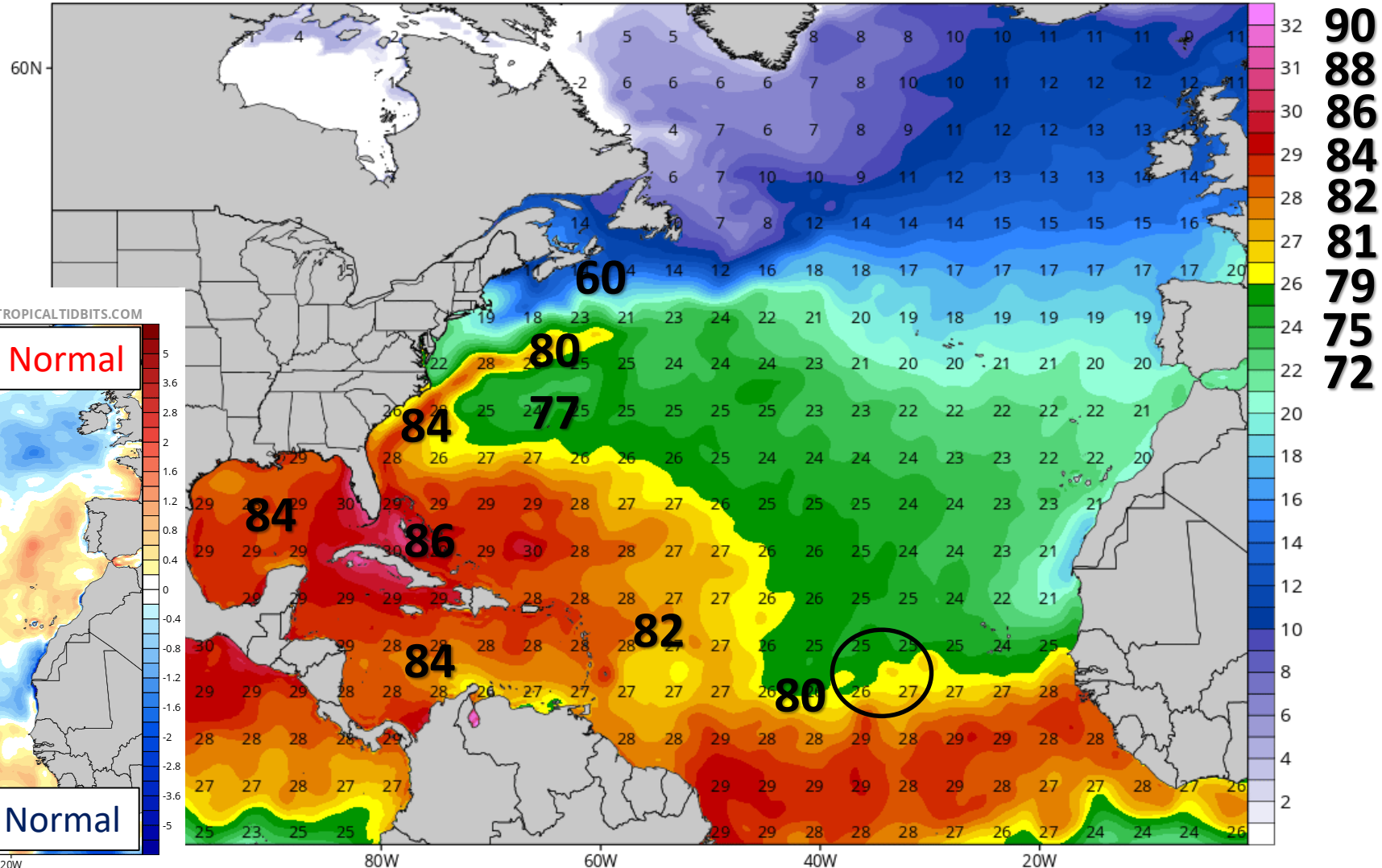
Sea Surface Temperatures & Anomalies

Is the ocean favorable for the system?

Water temperatures are supportive for tropical development for Invest 96L. The East Coast Low will need to remain offshore for supportive ocean temperatures.

CDAS Sea Surface Temperature (°C)

Analysis Time: 06z Jun 28 2020



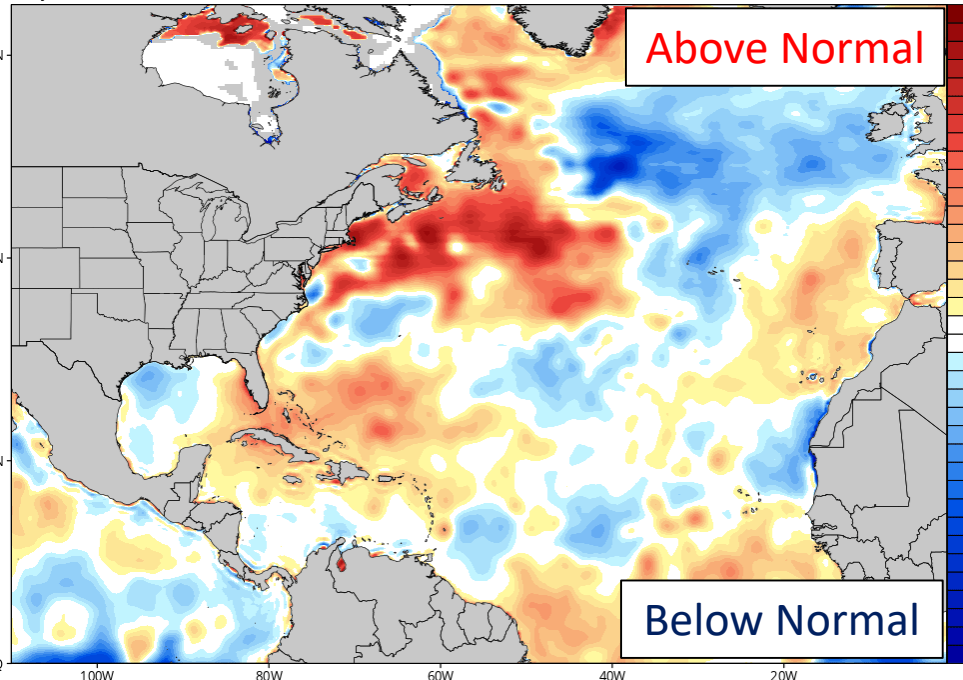
CDAS Sea Surface Temperature Anomaly (°C) (based on CFSR 1981-2010 Climatology)

Analysis Time: 06z Jun 28 2020

TROPICALTIDBITS.COM

Above Normal

Below Normal





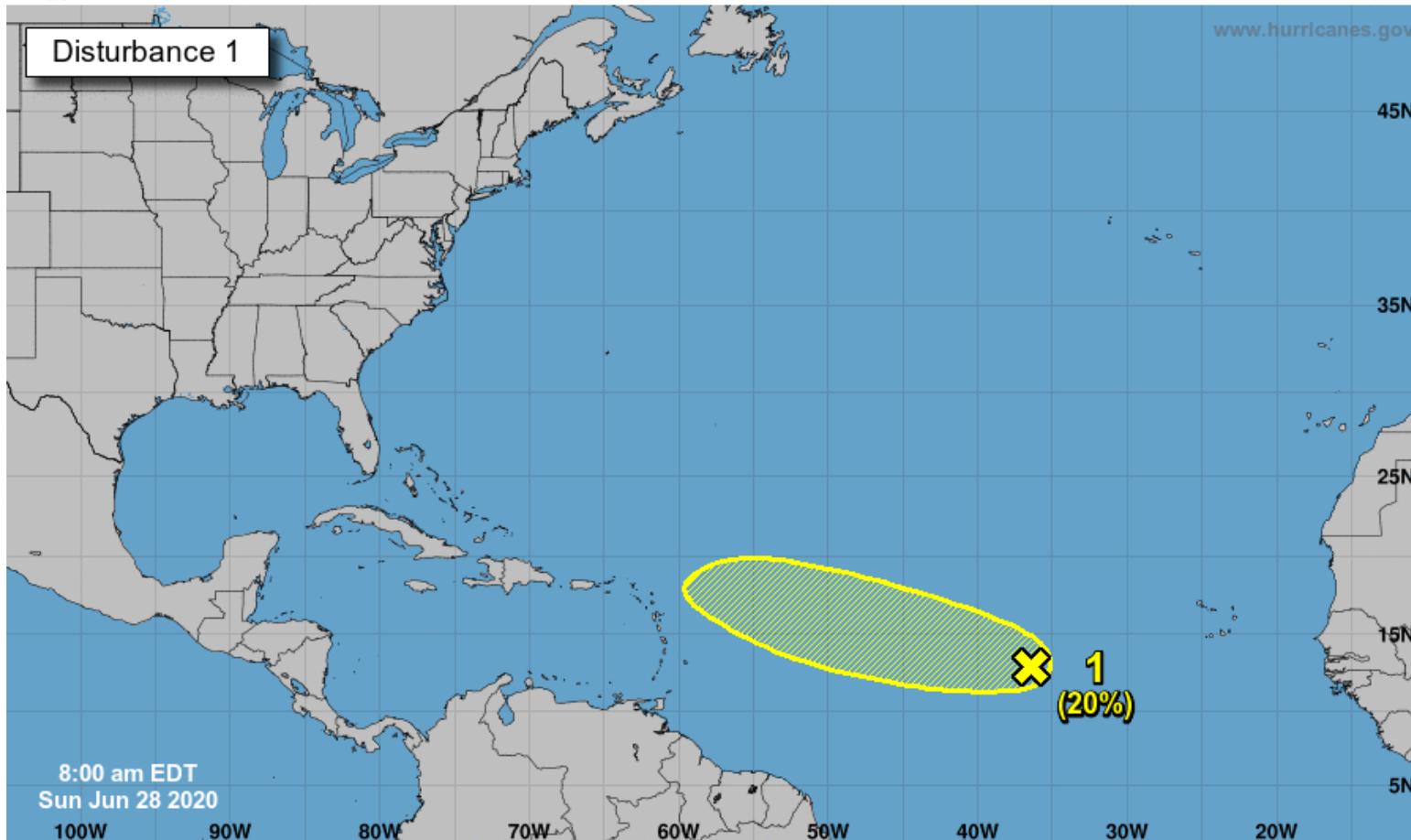
Tropical Weather Outlook

Possible Areas of Development During the Next 5 Days ([LINK](#))



Five-Day Graphical Tropical Weather Outlook

National Hurricane Center Miami, Florida



A tropical wave located several hundred miles west-southwest of the Cabo Verde Islands is moving west-northwestward at 15-20 mph. Some slow development of this system is possible during the next 2 to 3 days. After that time, environmental conditions become less conducive for development.

***Formation chance through 48 hours...low...10 percent.**

***Formation chance through 5 days...low...20 percent.**

Current Disturbances and Five-Day Cyclone Formation Chance: < 40% 40-60% > 60%
Tropical or Sub-Tropical Cyclone: Depression Storm Hurricane
 Post-Tropical Cyclone or Remnants

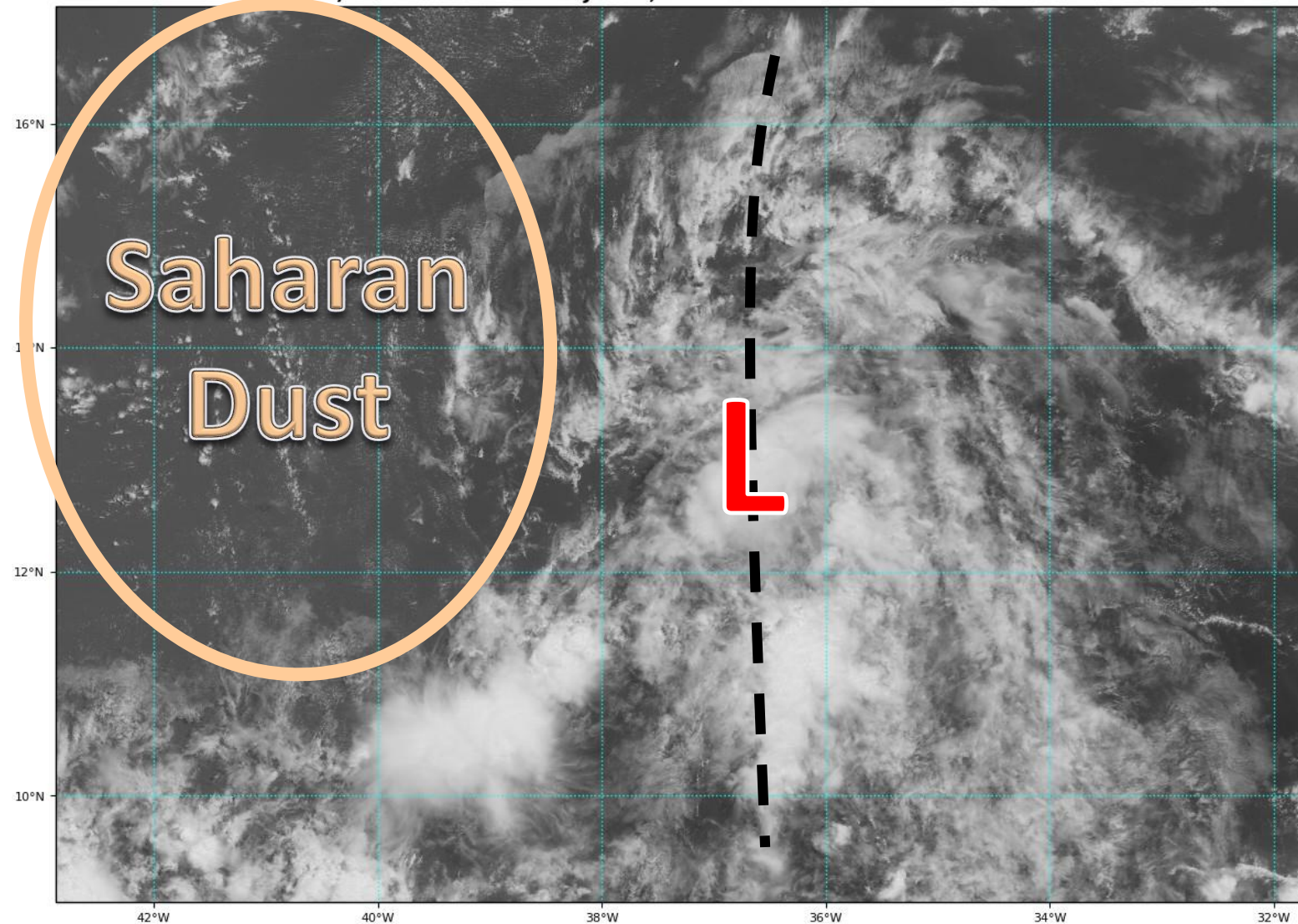


Satellite Imagery

Invest 96L

GOES-16 Channel 2 (visible) Reflectance at 13:25Z Jun 28, 2020

TROPICALTIDBITS.COM

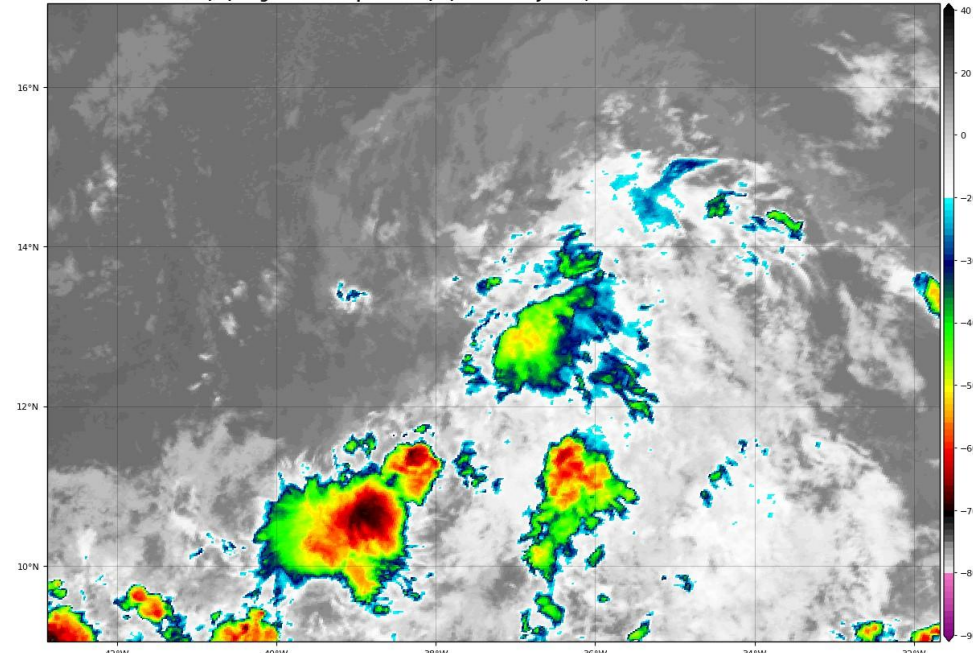


96L still is mostly an open wave (dashed black line), but there may be a weak low pressure area along the wave axis.

96L will rapidly move west-northwestward, but Saharan dust (tan circle) and stronger wind shear will only allow for slow development, if any.

GOES-16 Channel 13 (IR) Brightness Temperature (°C) at 13:35Z Jun 28, 2020

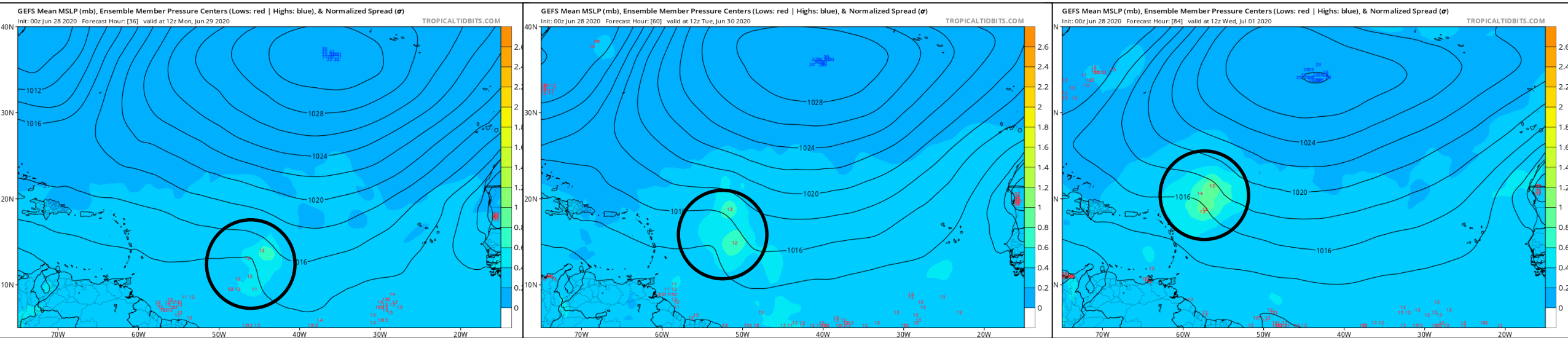
TROPICALTIDBITS.COM





Model Forecast Tracks

Ensemble Models



Monday Morning

Tuesday Morning

Wednesday Morning

Most models are not developing this system. The ones that do show development keep the system rather weak and disorganized, likely due to the presence of dry air and strong wind shear.



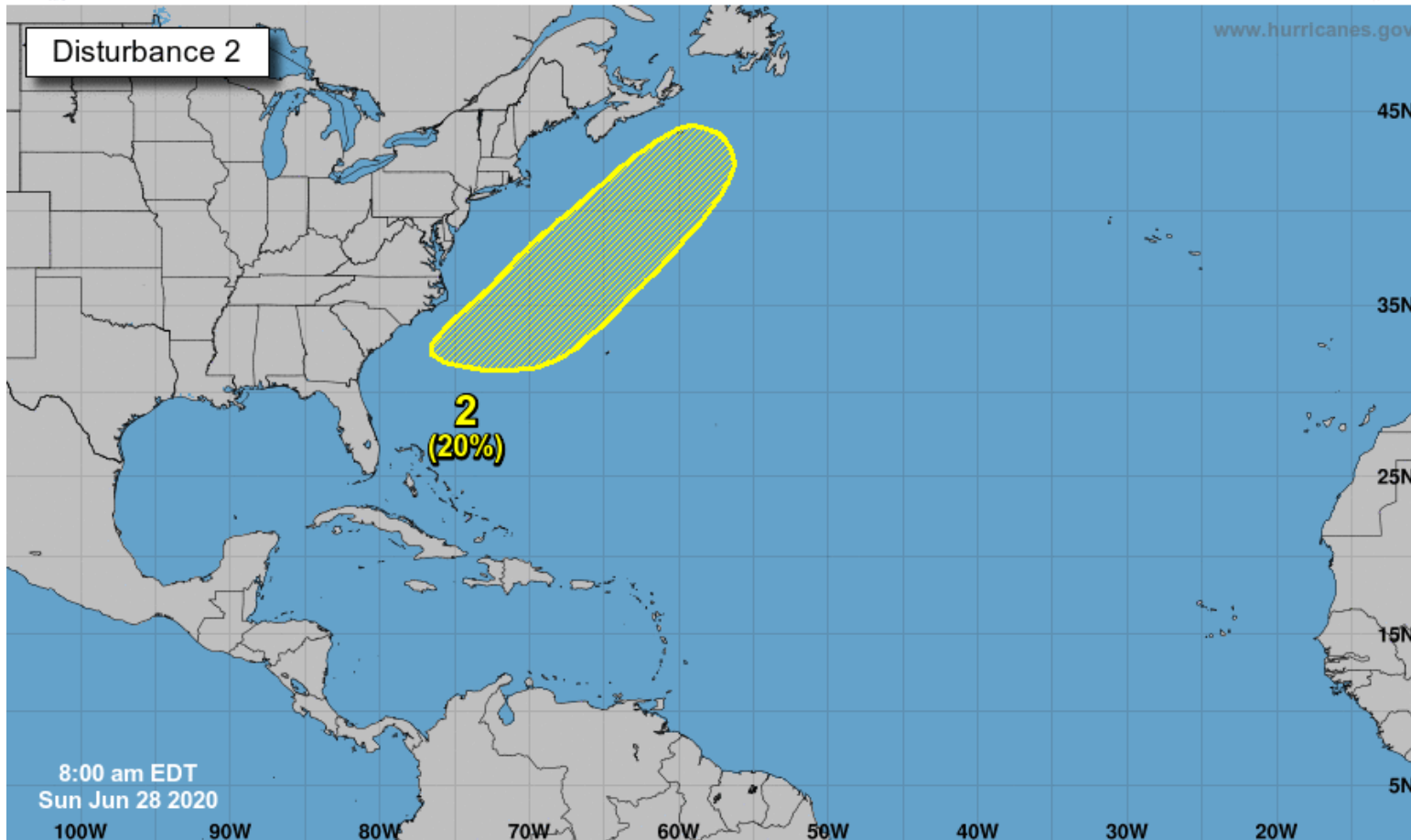
Tropical Weather Outlook

Possible Areas of Development During the Next 5 Days ([LINK](#))



Five-Day Graphical Tropical Weather Outlook

National Hurricane Center Miami, Florida



A low pressure system is expected to form in a few days off the southeastern coast of the United States. Some additional development could then occur as it generally moves northeastward.

***Formation chance through 48 hours...low...near 0 percent.**

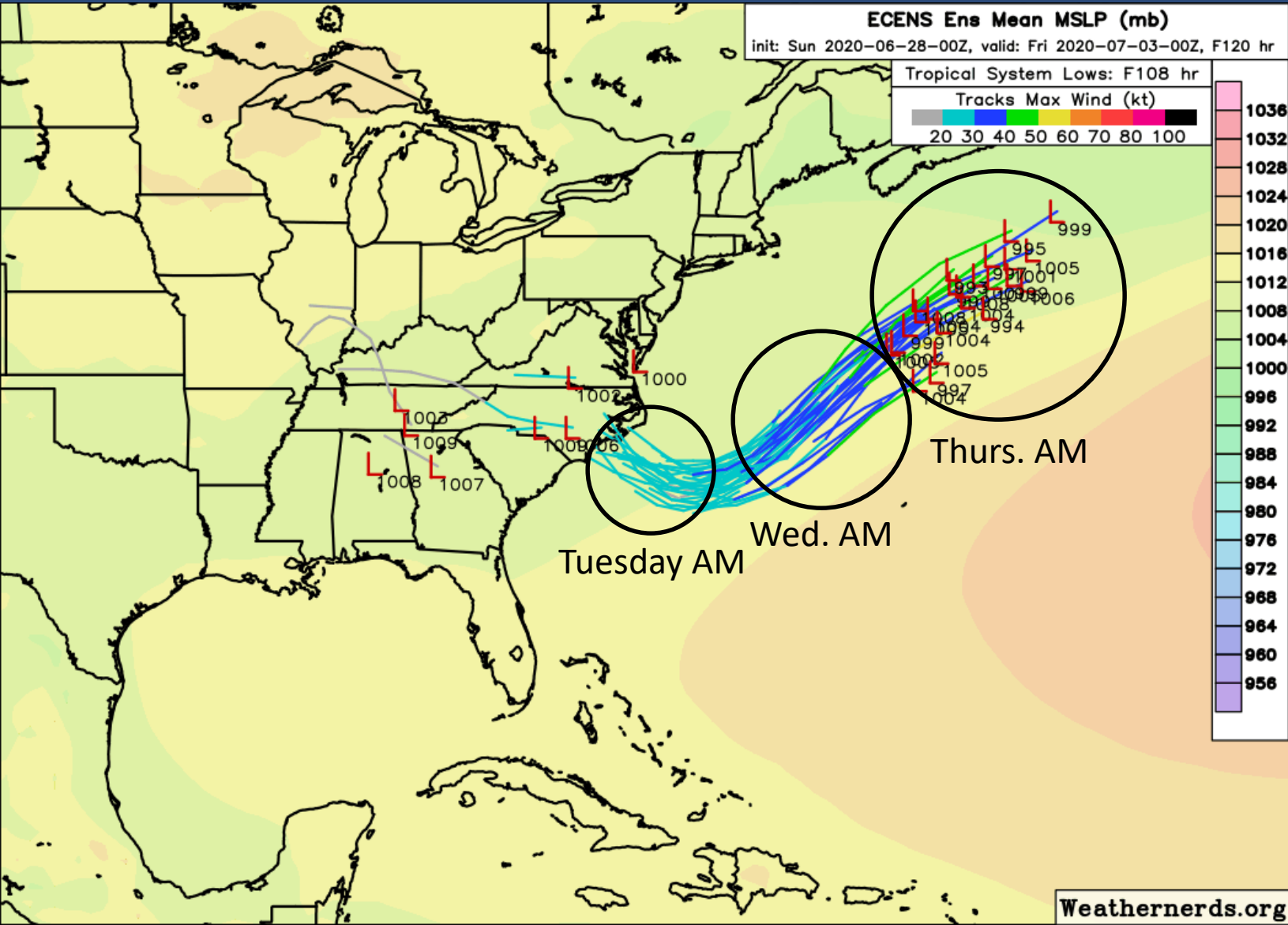
***Formation chance through 5 days...low...20 percent.**

Current Disturbances and Five-Day Cyclone Formation Chance: < 40% 40-60% > 60%
Tropical or Sub-Tropical Cyclone: Depression Storm Hurricane
 Post-Tropical Cyclone or Remnants



Model Forecast Tracks

Ensemble Models



As energy from disturbances moves through the Carolinas and over the Gulf Stream, an area of low pressure may develop by late Monday or early Tuesday near the coast of the Carolinas. The system will then have the opportunity to develop further into a tropical/subtropical cyclone, especially if it remains over the warm waters of the Gulf Stream.



Overall Summary

Invest 96L (Central Atlantic)

- A tropical wave over the Central Atlantic several hundred miles west-southwest of the Cabo Verde Islands will rapidly move west-northwestward at 15-20 mph.
- Some slow development is possible over the next 2-3 days before dry air and strong wind shear make conditions unfavorable.
- NHC gives this system a 10% chance of formation during the next 48 hours and a 20% chance in 3 to 5 days.

East Coast Low

- Disturbances will move from the Ohio River Valley through the Carolinas and into the western Atlantic over the Gulf Stream.
- An area of low pressure will likely develop off the coast of the Carolinas then move northeastward, parallel to the US East Coast. Some tropical or subtropical development, especially if it remains over the Gulf Stream.
- NHC gives this system a 0% chance of formation during the next 48 hours and a 20% chance in 3 to 5 days.
- **This system will not directly impact Florida.**

Florida Outlook:

- Rain chances will increase this week as high pressure weakens over the state.
- Hot and humid weather continues with highs well into the 90s and heat index values of 100-107 each afternoon.
- Saharan dust will likely thin out early this week. Those with sensitive respiratory system may still experience some irritation over the next day or so.

The next briefing packet will be issued Monday morning. For the latest information on the tropics, please visit the National Hurricane Center website at www.hurricanes.gov.



TROPICAL UPDATE



Created by:

Cameron Young, Assistant State Meteorologist

Cameron.Young@em.myflorida.com

State Meteorological Support Unit

Florida Division of Emergency Management

Users wishing to subscribe (approval pending) to this distribution list, register at:

https://public.govdelivery.com/accounts/FLDEM/subscriber/new?topic_id=SERT_Met_Tropics.

Other reports available for subscription are available at:

<https://public.govdelivery.com/accounts/FLDEM/subscriber/new?preferences=true>