



TROPICAL UPDATE



11:00 AM EDT

Thursday, June 4, 2020

Tropical Depression Cristobal

This update is intended for government and emergency response officials, and is provided for informational and situational awareness purposes only. Forecast conditions are subject to change based on a variety of environmental factors. For additional information, or for any life safety concerns with an active weather event please contact your County Emergency Management or Public Safety Office, local National Weather Service forecast office, or visit the National Hurricane Center website at www.hurricanes.gov.

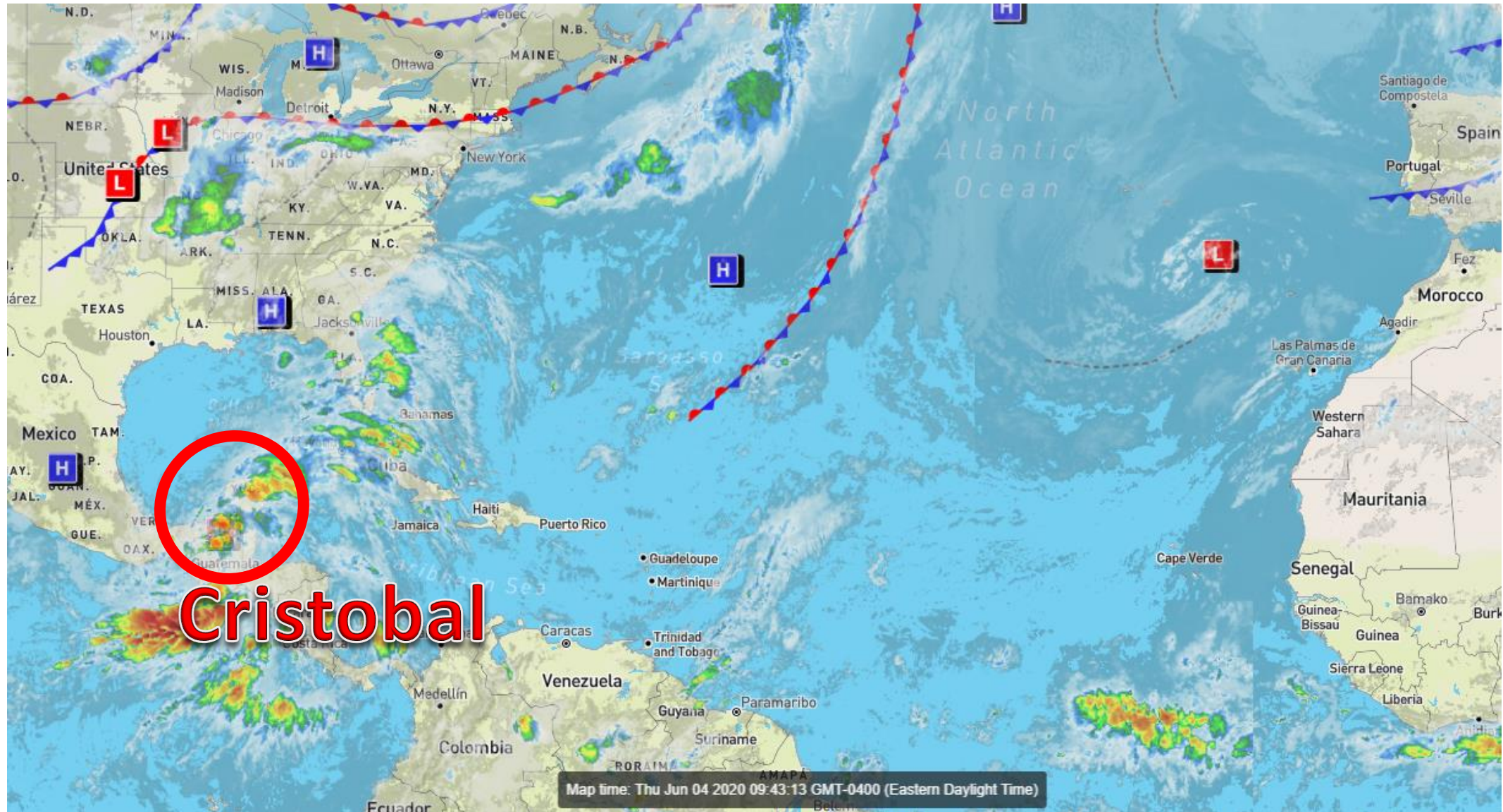


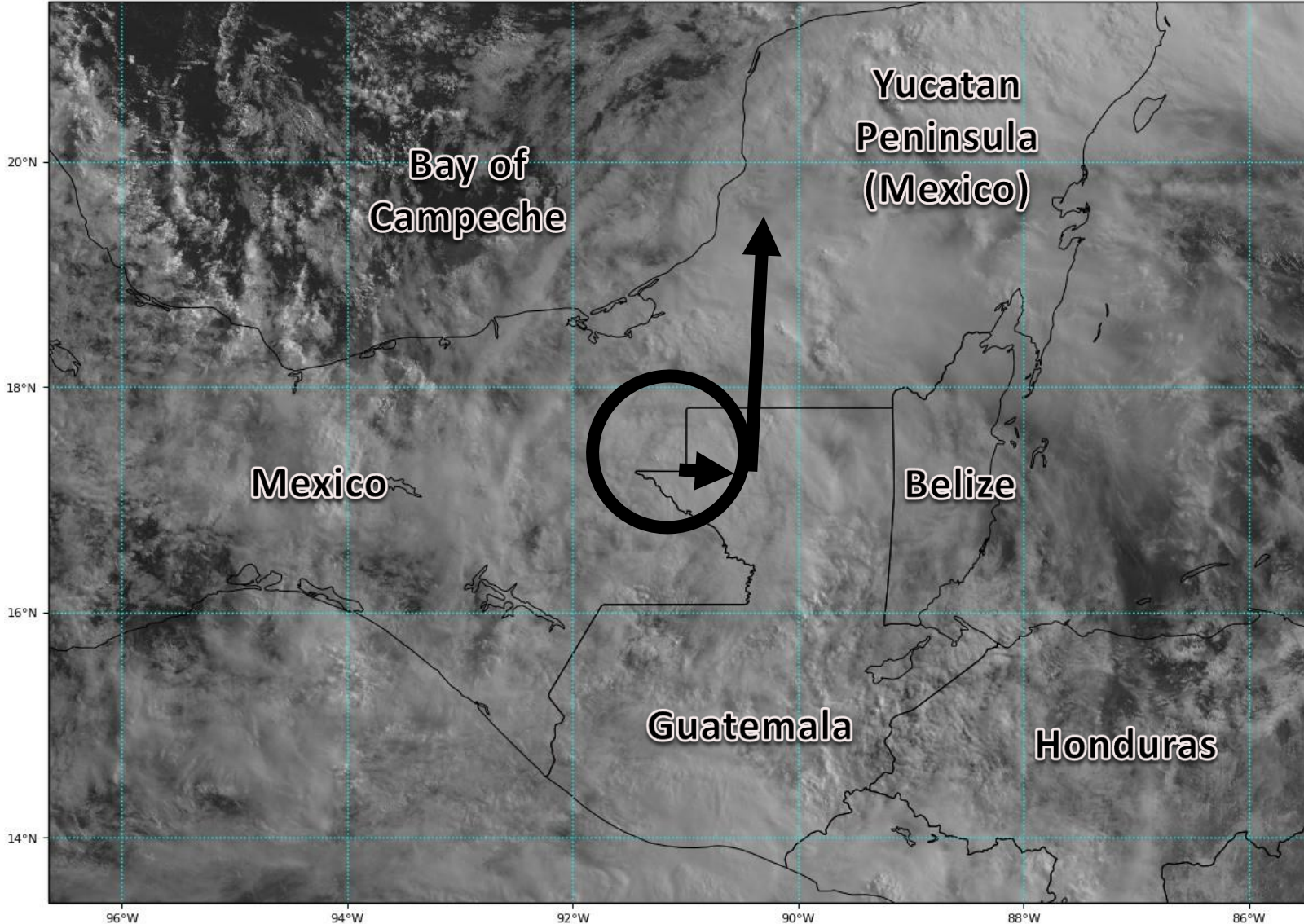
Take Home Messages

- Heavy showers and thunderstorms will be possible **at any time** statewide through early next week with disruptions to field operations.
- Thunderstorms may track over the same areas resulting in isolated flash flooding in urban areas anywhere across the state through Saturday
- More focused flood threat develops from the Panhandle to the Nature Coast Saturday Night-Monday as a result of Tropical Storm Cristobal.
- Other impacts from Cristobal are unknown at this time, but minor coastal flooding, dangerous rip currents, and minor beach erosion seem increasingly likely late this weekend in the Panhandle.
- Wind impacts are possible along coastal parts of the Panhandle. Tropical Storm and Storm Surge Watches could be issued later tonight or Friday.

Atlantic Basin Satellite Image

Chance of development: — None — Low — Medium — High





Visible Satellite Imagery: Tropical Depression Cristobal

The center of Cristobal (black circle) moved inland yesterday, and has meandered southeastward toward the border of Mexico and Guatemala. Weakening has occurred, and a continued slow weakening is possible for as long as it remains over land.

Once Cristobal emerges back into the Gulf of Mexico, strengthening back into a tropical storm is forecast. However, the future strength remains dependent on how much of the circulation is intact once it leaves the Yucatan Peninsula.



Note: The cone contains the probable path of the storm center but does not show the size of the storm. Hazardous conditions can occur outside of the cone.



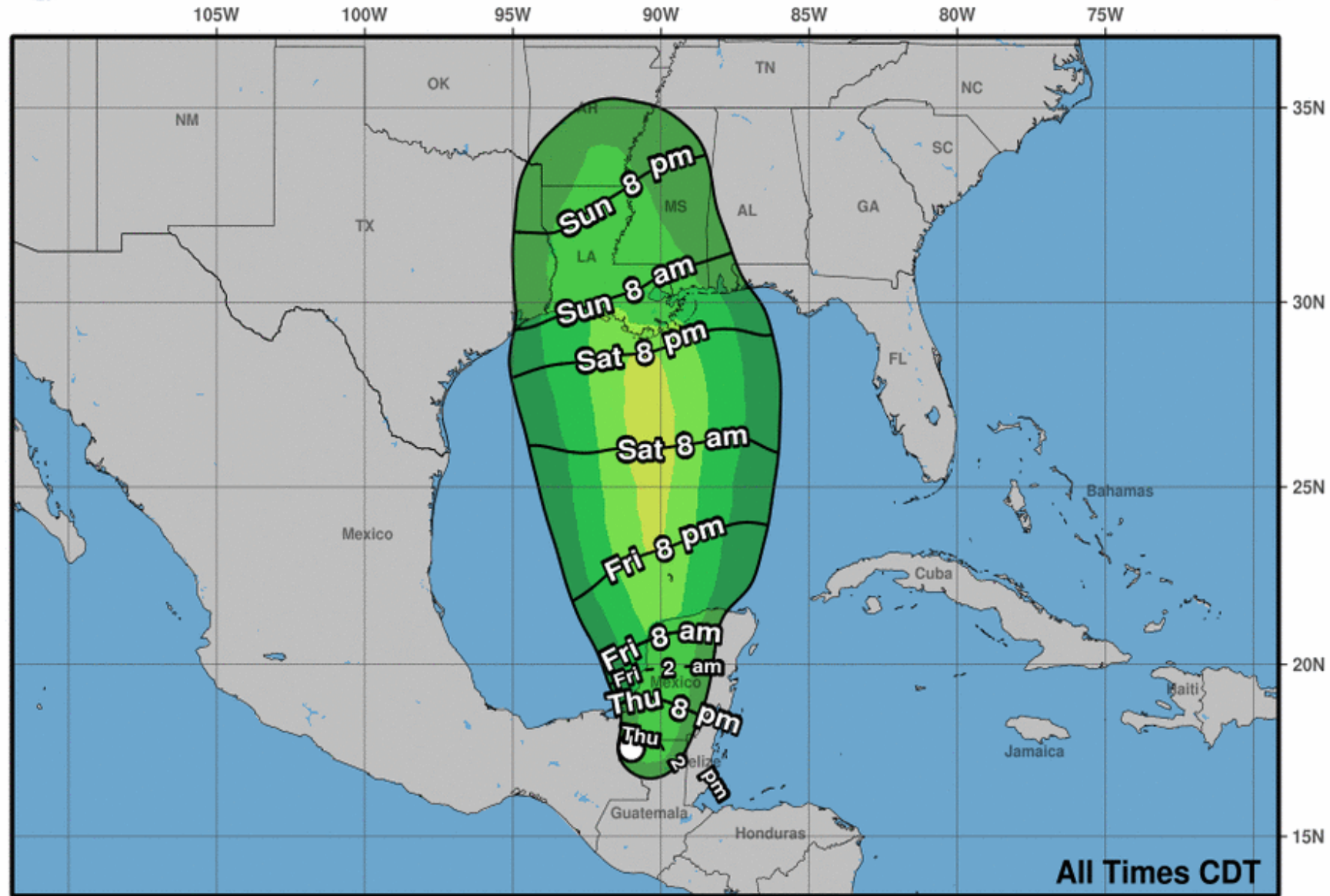
Projected Path: Tropical Depression Cristobal

- The center of Cristobal is located about 160 miles south-southwest of Campeche, Mexico, or about 775 miles southwest of Key West, FL
- Maximum sustained winds are at 35 mph.
- The system will meander just inland over Mexico for the next couple of day before turning northward late Thursday or Friday.
- On Sunday, the system is likely to be approaching the northern Gulf Coast.

Tropical Depression Cristobal Thursday June 04, 2020 10 AM CDT Advisory 12 NWS National Hurricane Center	Current information: x Center location 17.6 N 91.0 W Maximum sustained wind 35 mph Movement ESE at 3 mph	Forecast positions: ● Tropical Cyclone ○ Post/Potential TC Sustained winds: D < 39 mph S 39-73 mph H 74-110 mph M > 110 mph	
Potential track area: Day 1-3 Day 4-5	Watches: Hurricane Trop Stm	Warnings: Hurricane Trop Stm	Current wind extent: Hurricane Trop Stm



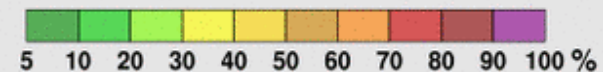
Earliest Reasonable Arrival Time of Tropical-Storm-Force Winds



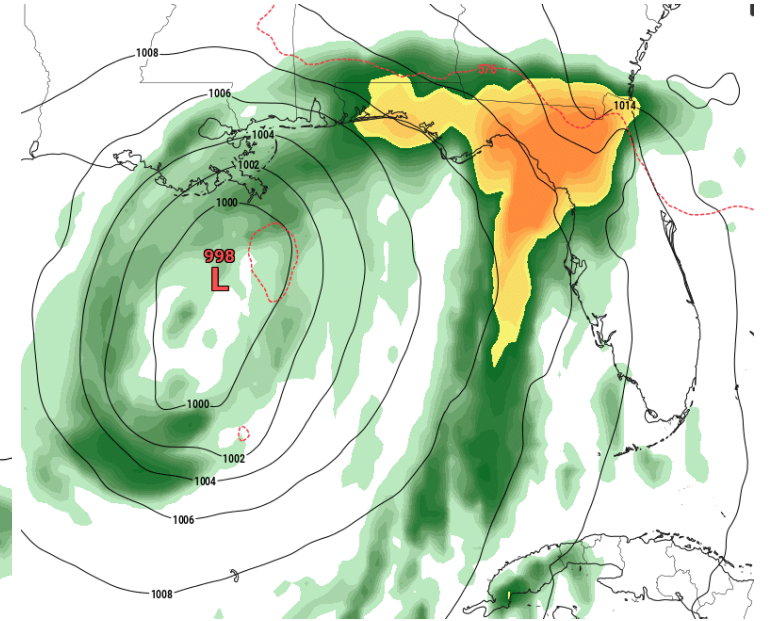
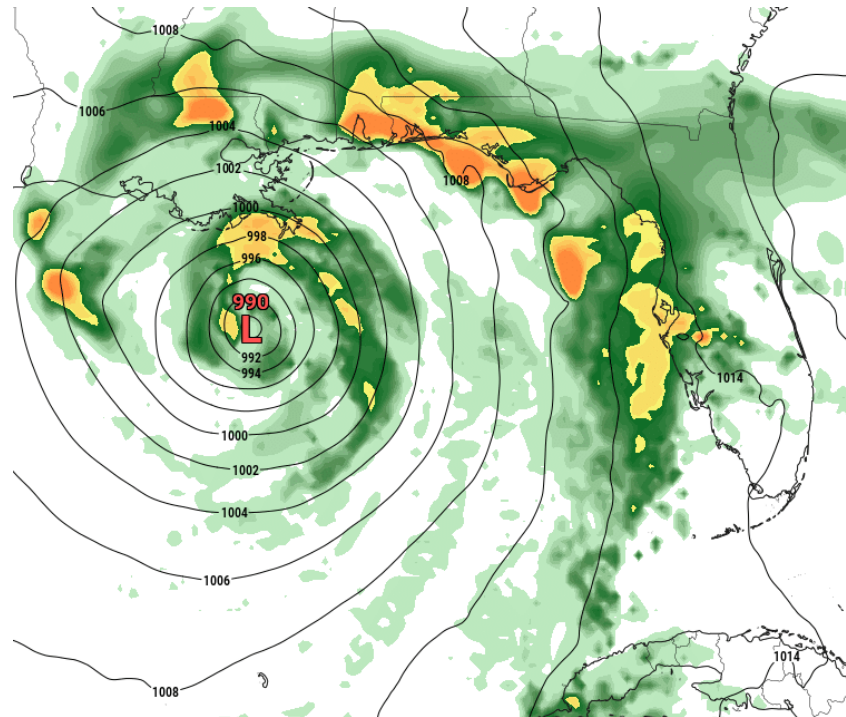
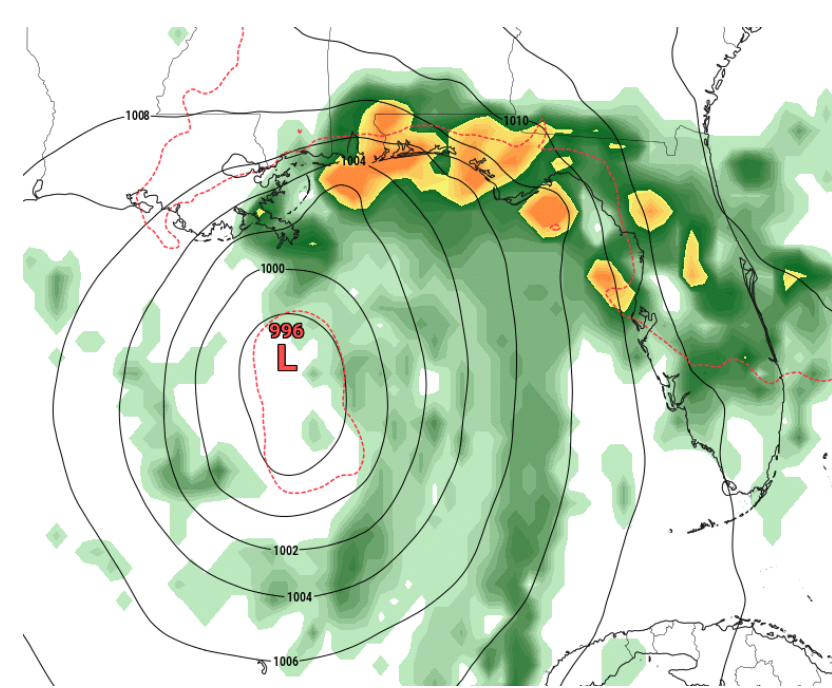
Tropical Depression Cristobal
Thu. Jun. 4, 2020 10 am CDT
Advisory 12

Storm Location ○ < 34 kt (39 mph)
& ○ 34-63 kt (39-73 mph)
Wind Speed ● ≥ 64 kt (74 mph)

5-day chance of receiving sustained 34+ kt (39+ mph) winds



****Even with landfall well west in Louisiana,**
there is consensus on heavy rainfall in the
Panhandle Saturday Night-Monday**





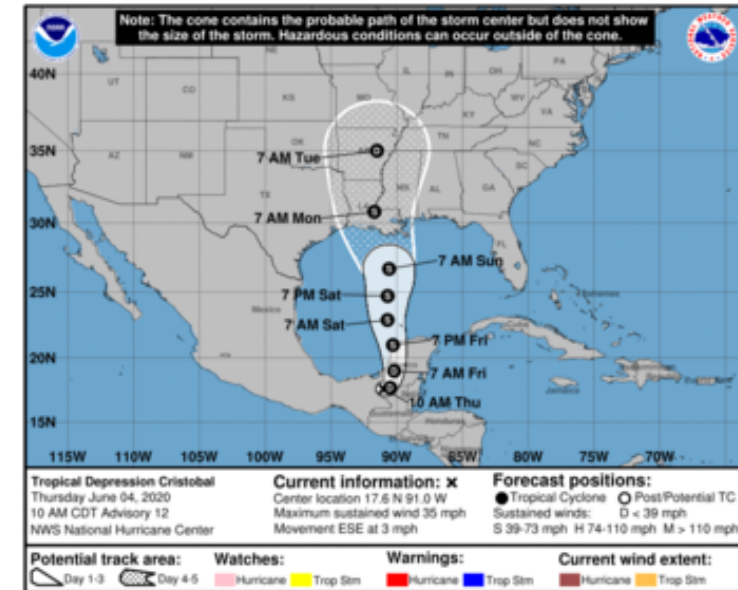
Key Messages for Tropical Depression Cristobal



Advisory 12: 10:00 AM CDT Thu Jun 04, 2020

1. Damaging and deadly flooding has already been occurring in portions of Mexico and Central America. Cristobal is expected to produce additional extreme rainfall amounts through the end of the week. The heaviest additional rainfall is expected over far southern Mexico and portions of the Yucatan Peninsula, while also extending along the Pacific coast from Chiapas to Guatemala and El Salvador. This rainfall could cause widespread life-threatening flash floods and mudslides. Refer to products from your local weather office for more information.

2. Cristobal is forecast to re-emerge over the southern Gulf of Mexico on Friday and move northward over the central and northern Gulf of Mexico over the weekend. There is a risk of tropical storm force winds this weekend from Louisiana to the western Florida Panhandle and a risk of dangerous storm surge from Louisiana to the Florida Big Bend. These hazards, along with heavy rainfall, will arrive well in advance of and extend well east of Cristobal's center. Tropical storm and storm surge watches could be issued tonight or Friday.



For more information go to hurricanes.gov



Flood Watches

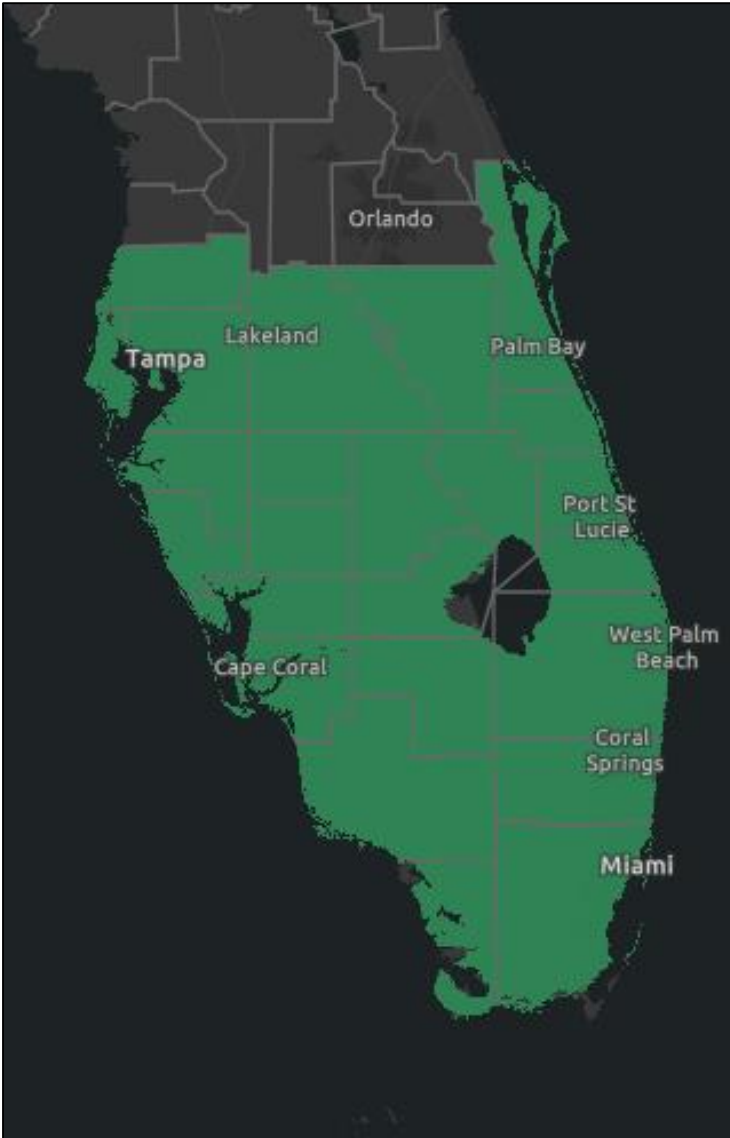
Through 4 PM EDT Saturday

Links: [NWS Tampa Bay](#) | [NWS Melbourne](#) | [NWS Miami](#)

Torrential downpours and wet to saturated soils will lead to some flooding, especially of urban, low-lying or poor drainage areas. Average rainfall of 2-4" is expected across the Peninsula with localized amounts of 6-8" possible.

Some parts of the Treasure Coast, particularly in Martin County, have seen 5-10+" of rainfall today, and additional rainfall will likely lead to flooding in these areas.

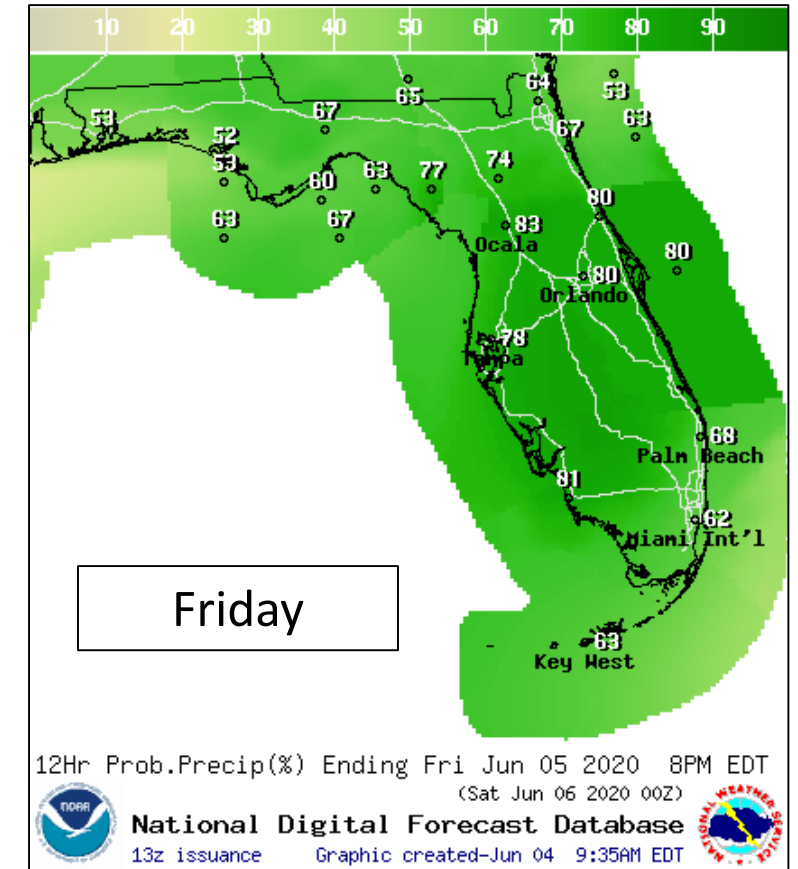
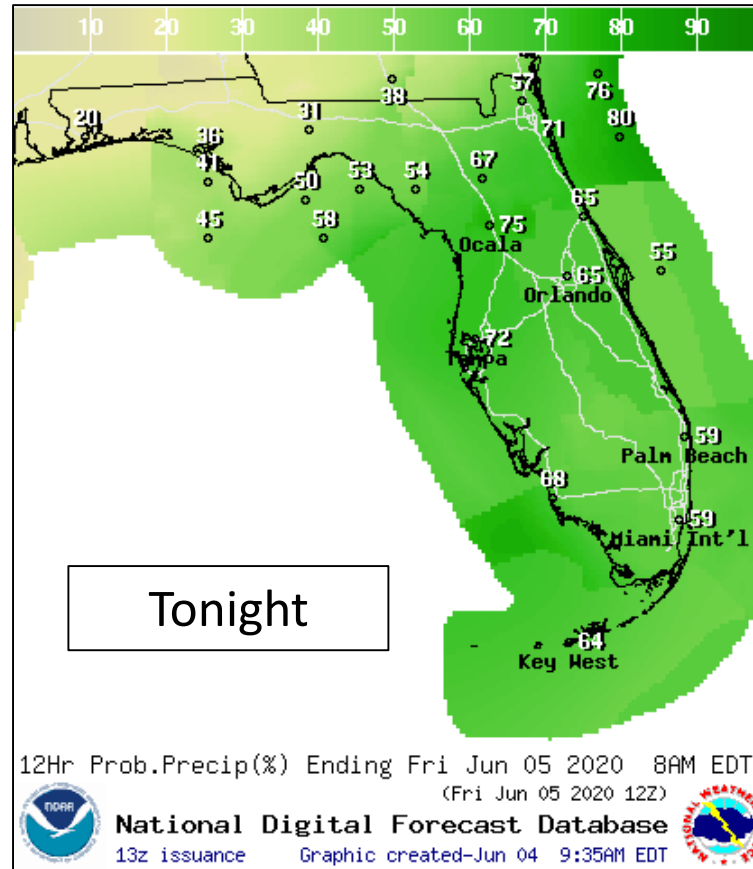
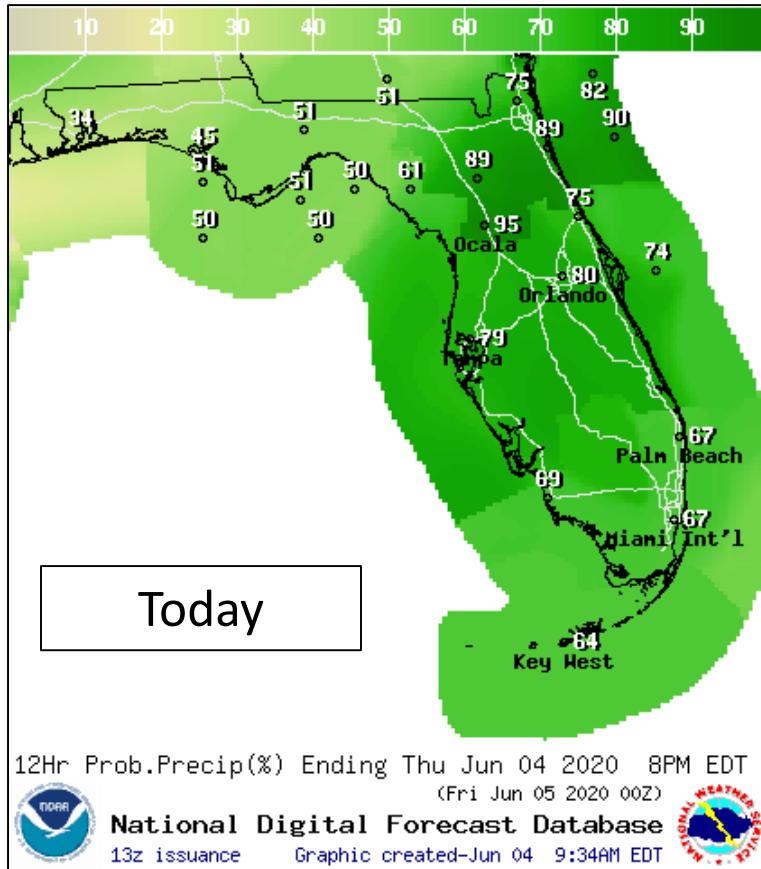
Additional Flood/Flash Flood Watches may be needed elsewhere across the state later this week into the weekend.





Thursday - Friday

Timing the Event – Not Cristobal Rainfall



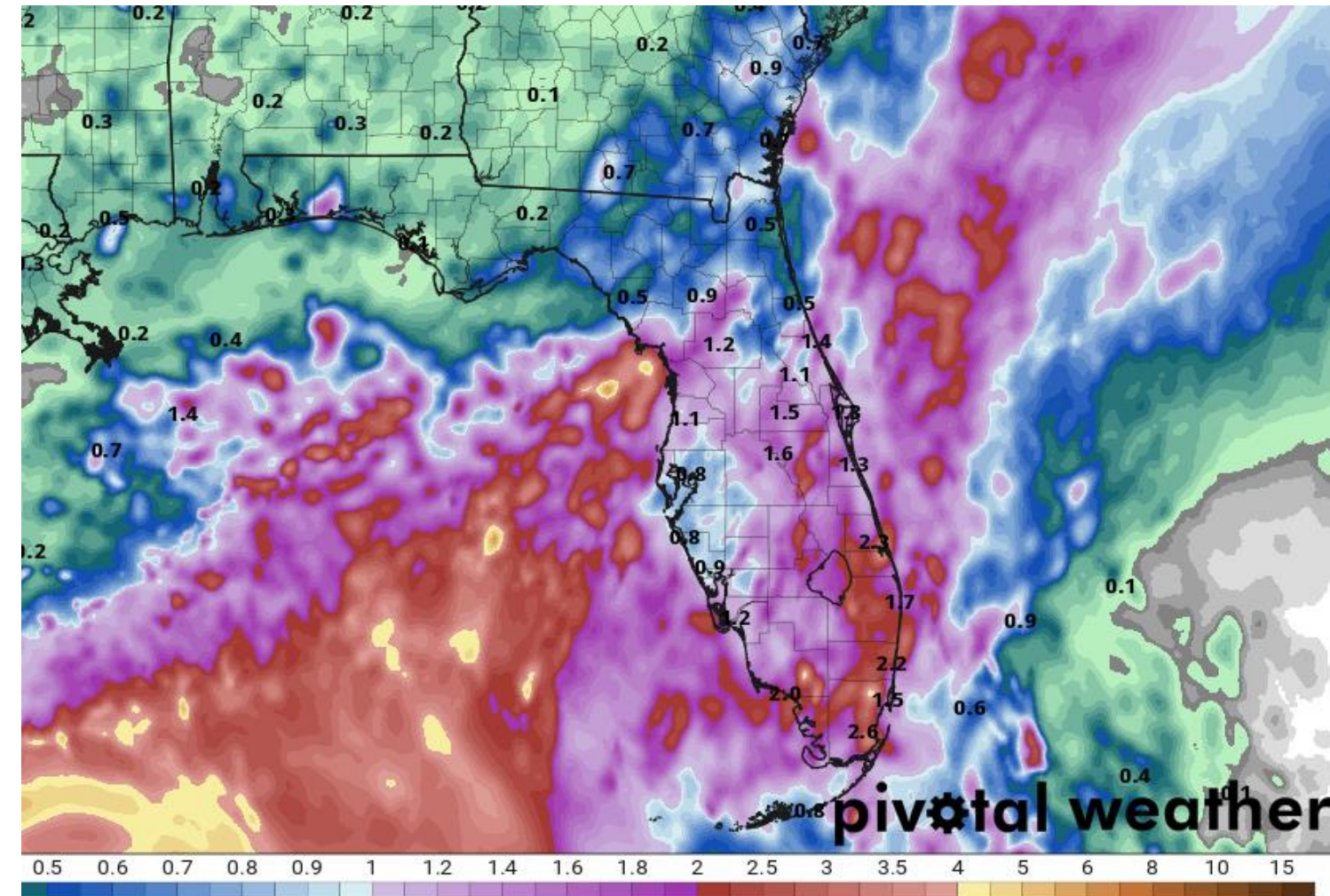
Rounds of showers and thunderstorms will continue across the state, with the best rain chances over the Peninsula and Northeast Florida. Locally heavy rainfall will be possible in any storms, but stronger thunderstorms may contain gusty winds.

****Localized flooding will be possible each day where heavier storms set up.****



Rainfall Totals Through Friday

Timing the Event

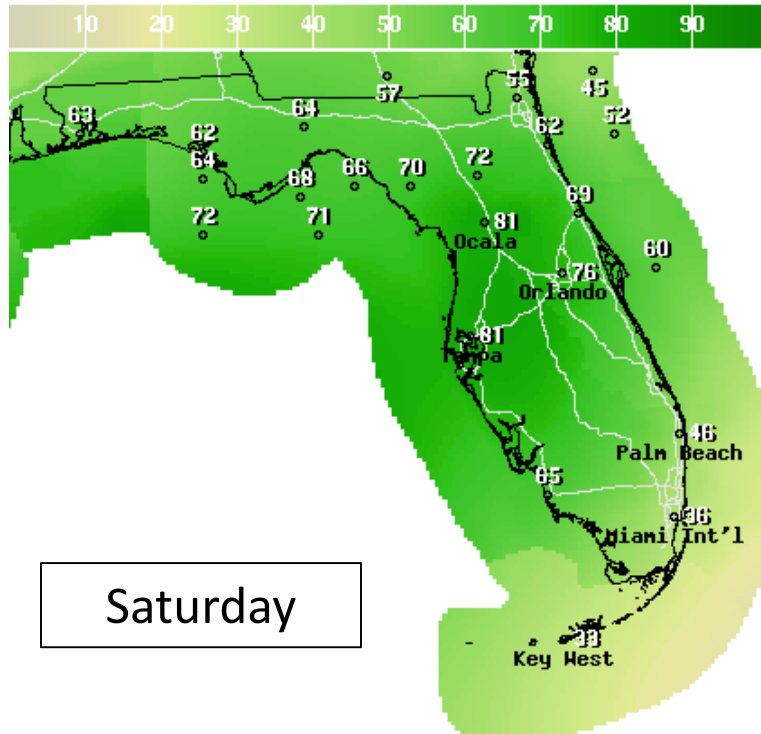


Without any direct rain bands from Cristobal, much of the state will receive 1-3" of rain, with localized areas getting 4-6" through Friday evening. This could result in some isolated flash flooding, especially in urban areas.



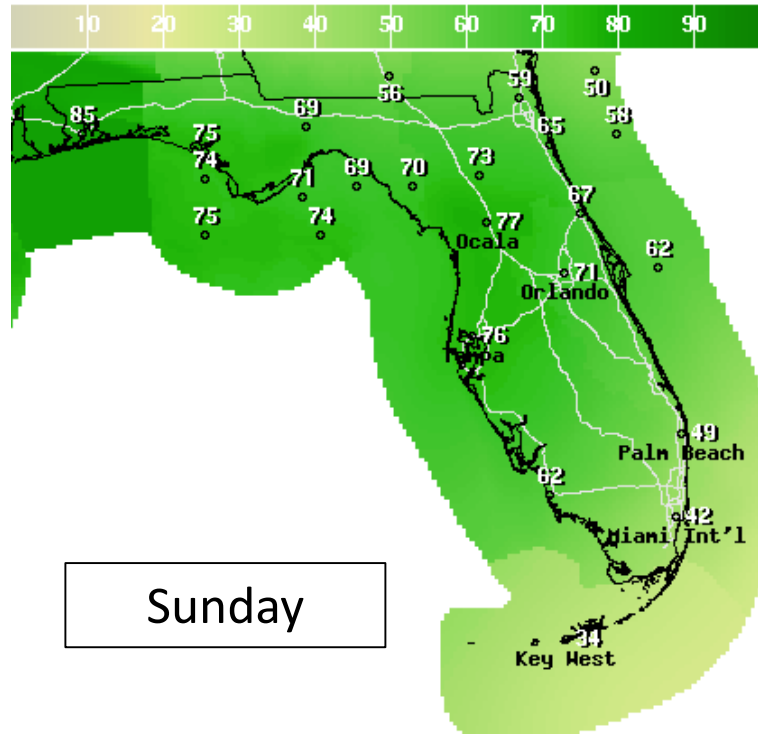
Saturday - Monday

Timing the Event – Cristobal Rainfall



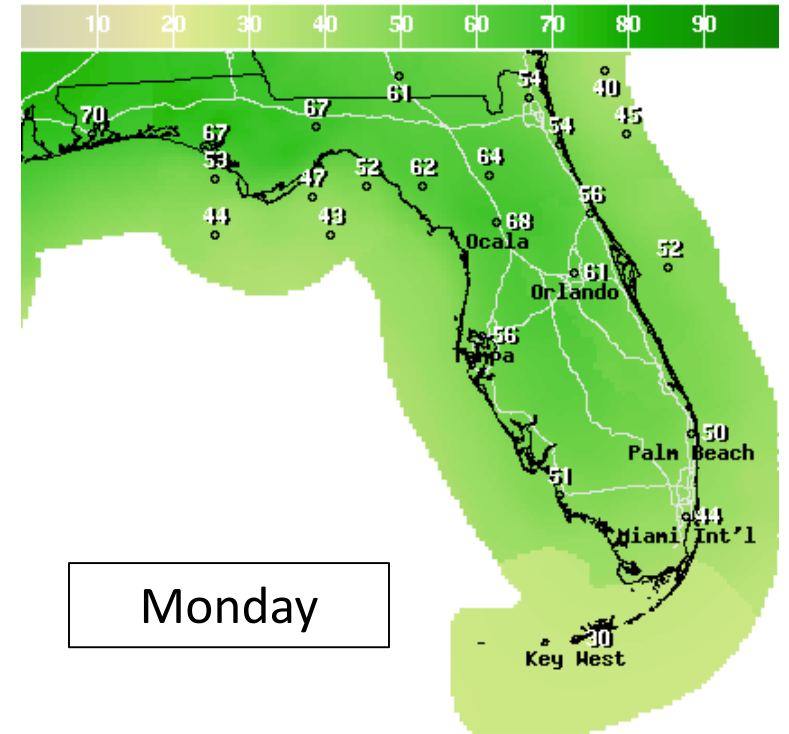
Saturday

12Hr Prob.Precip(%) Ending Sat Jun 06 2020 8PM EDT
(Sun Jun 07 2020 00Z)
National Digital Forecast Database
13z issuance Graphic created-Jun 04 9:35AM EDT



Sunday

12Hr Prob.Precip(%) Ending Sun Jun 07 2020 8PM EDT
(Mon Jun 08 2020 00Z)
National Digital Forecast Database
13z issuance Graphic created-Jun 04 9:35AM EDT



Monday

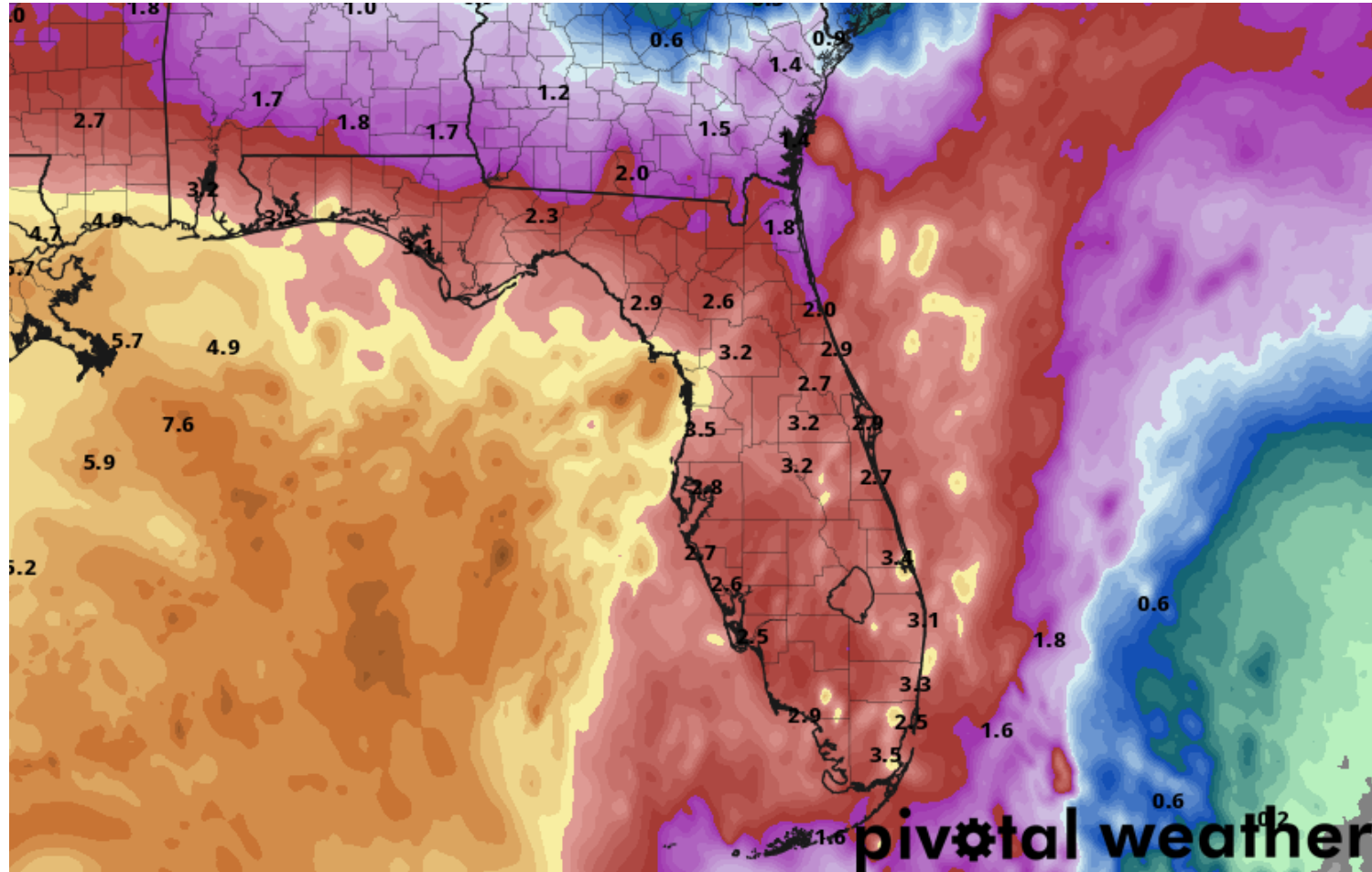
12Hr Prob.Precip(%) Ending Mon Jun 08 2020 8PM EDT
(Tue Jun 09 2020 00Z)
National Digital Forecast Database
13z issuance Graphic created-Jun 04 9:35AM EDT

Rounds of rain and with isolated thunderstorms are possible through the weekend as Cristobal approaches and makes landfall along the northern Gulf Coast. Heavier bands of rain may also set up across parts of the state, which will cause very heavy rain in localized locations. **The threat for flash flooding is increasing.** However, the forecast is very dependent on the track and evolution of Cristobal.



Rainfall Totals Through Tuesday

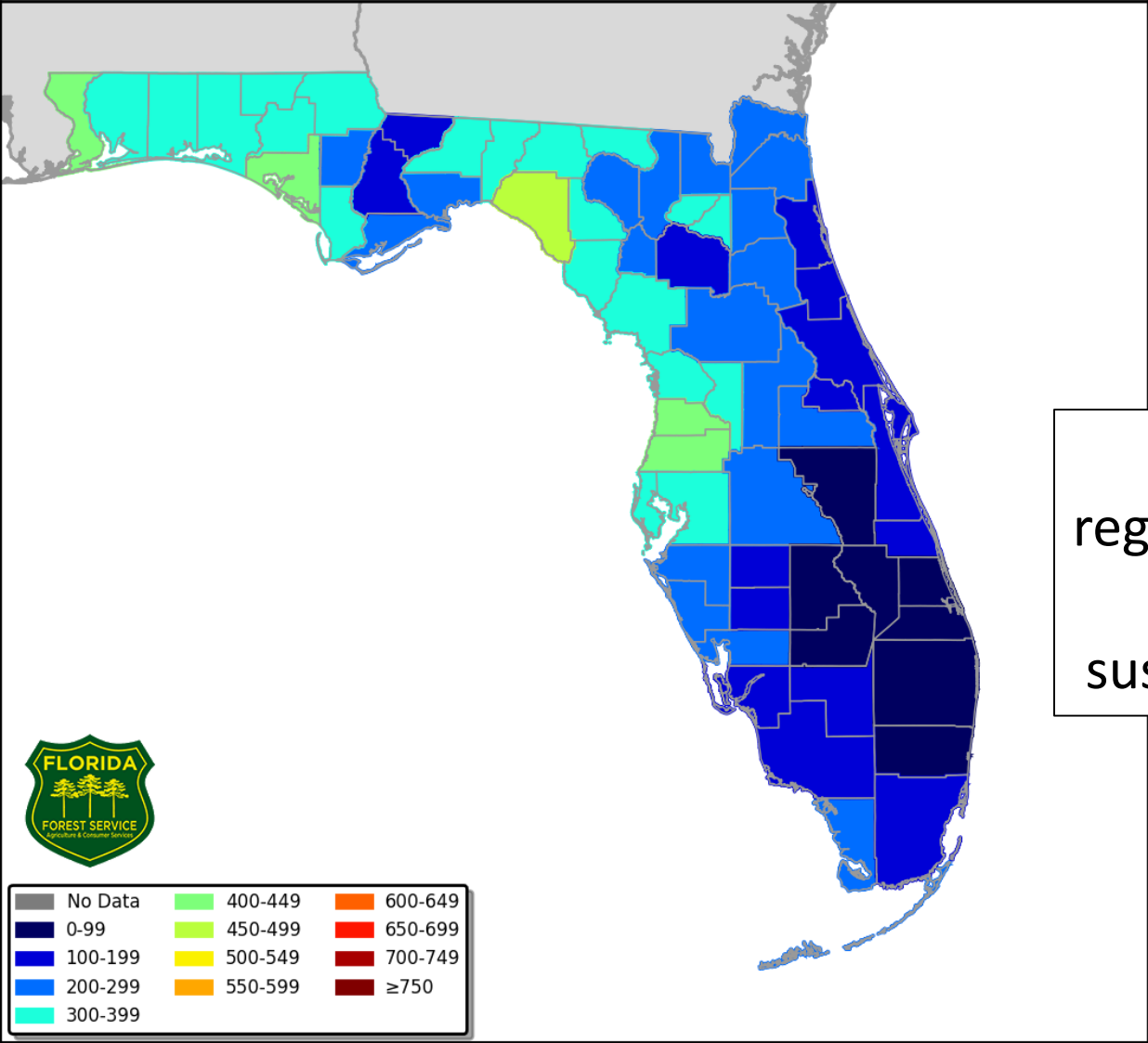
Timing the Event



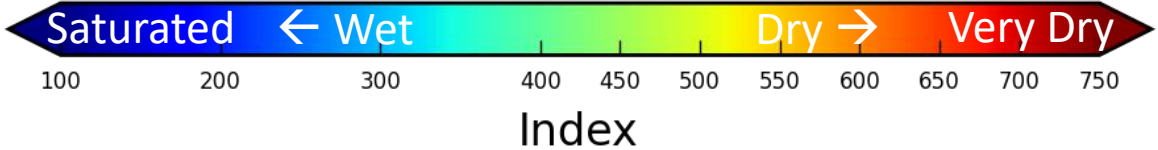
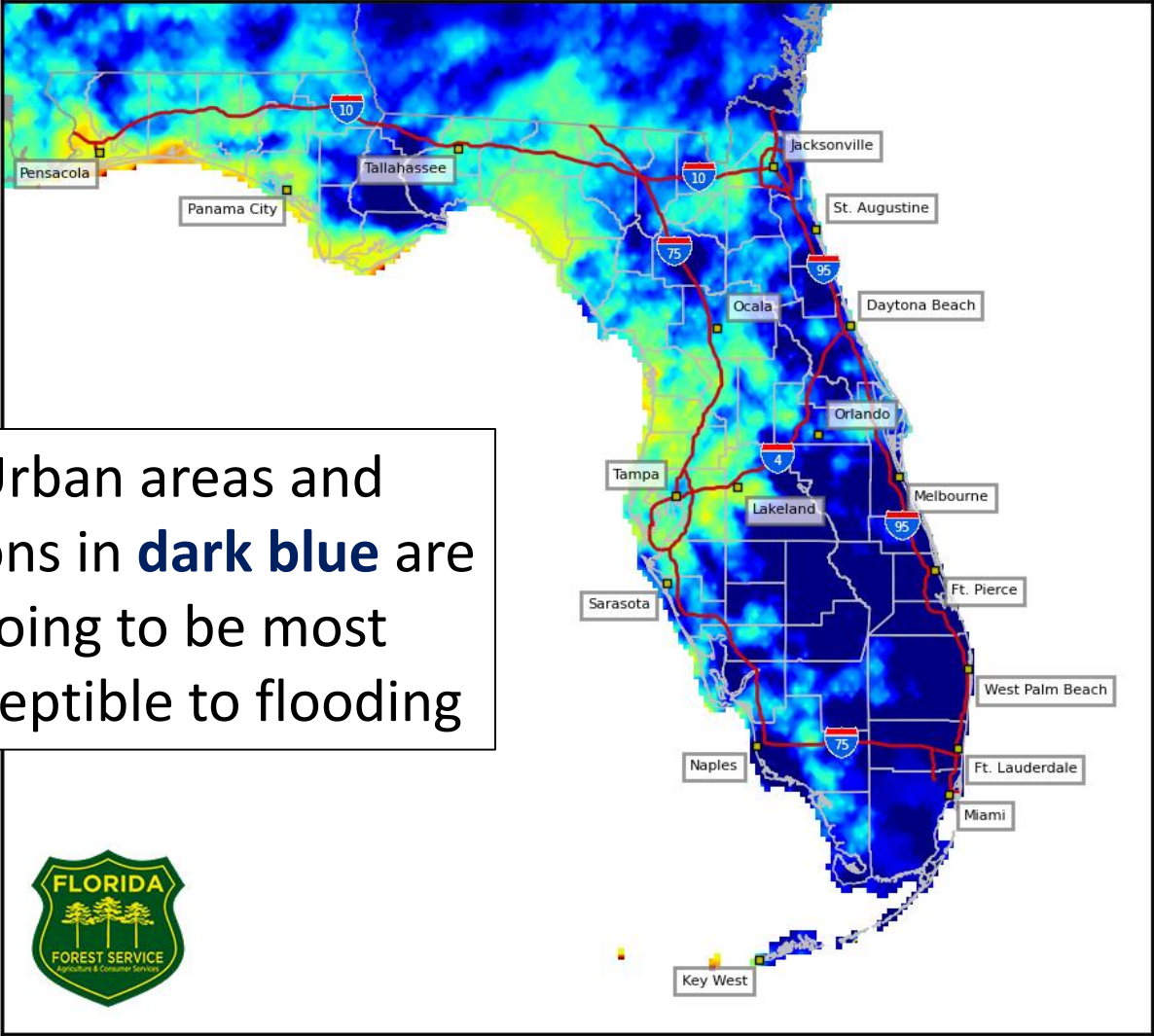
Through next Tuesday, widespread rainfall totals of 3-6" are expected across much of the state. Locally higher totals of 6-12" are possible, especially where heavier bands set up.

This could result in flash flooding, especially in urban areas. Training rain bands will also increase the risk of flooding. River flooding will also be possible across North Florida this weekend into next week.

Keetch Byram Drought Index (KBDI)
County Averages for June 03, 2020



4 km Resolution KBDI
Statewide
June 03, 2020

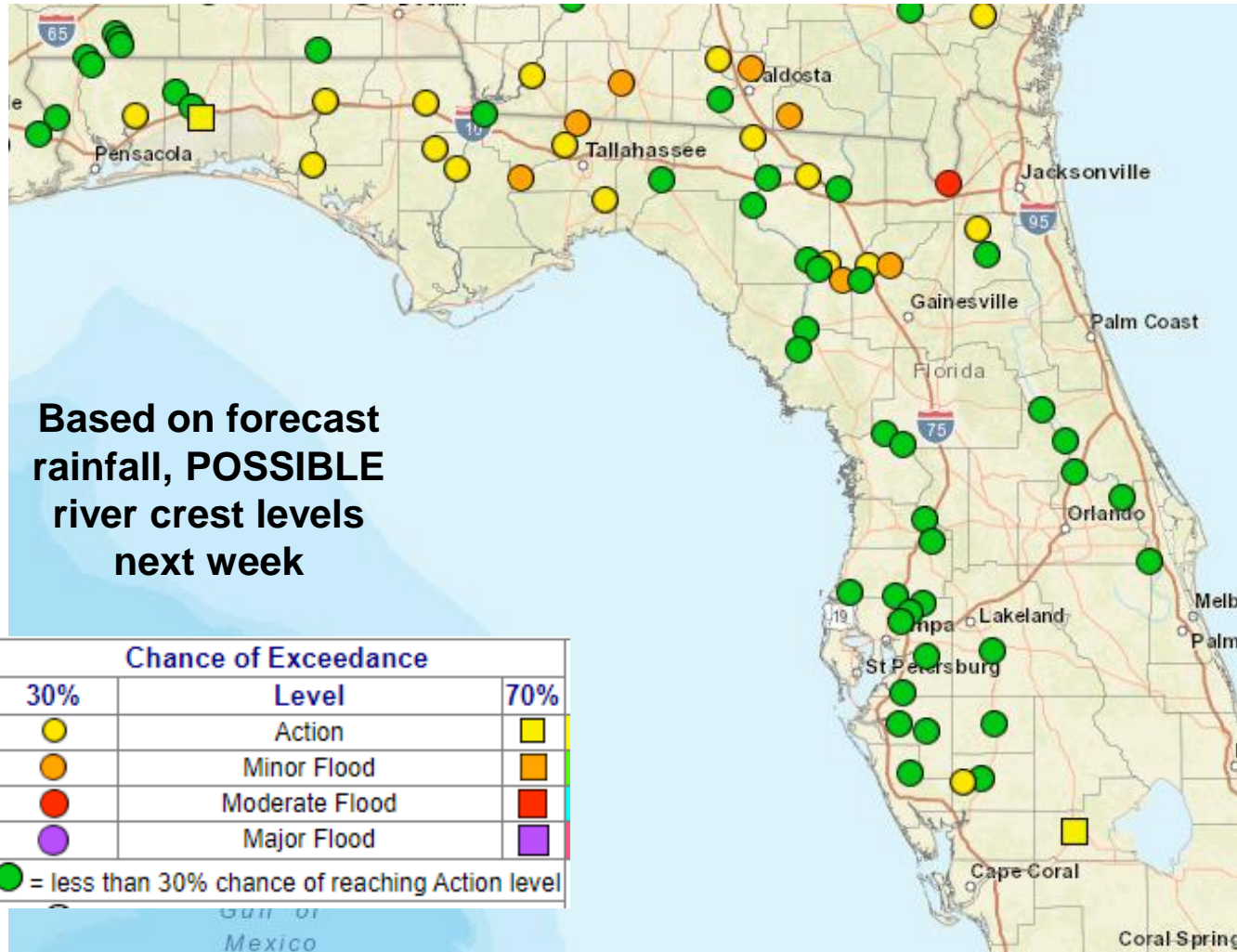


[KBDI – Full Report from the FFS](#)



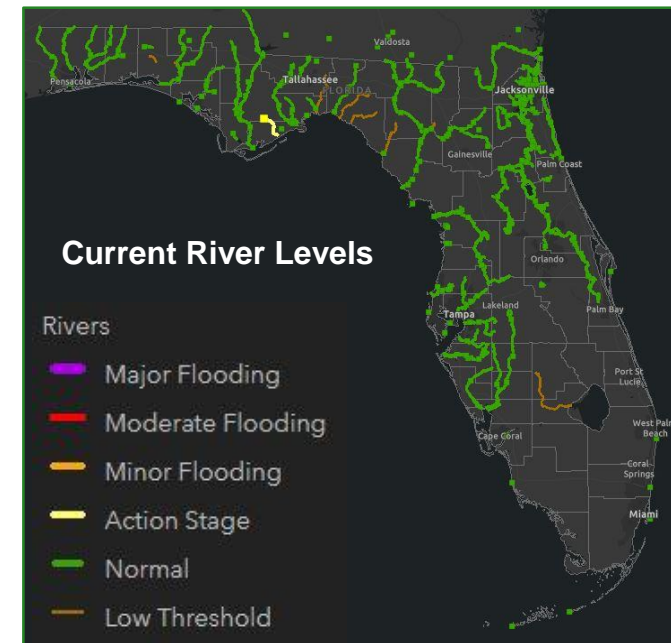
Possible River Flooding

Starting Early Next Week



Widespread minor and isolated moderate river flooding seems likely starting early next week due to the forecasted rainfall totals.

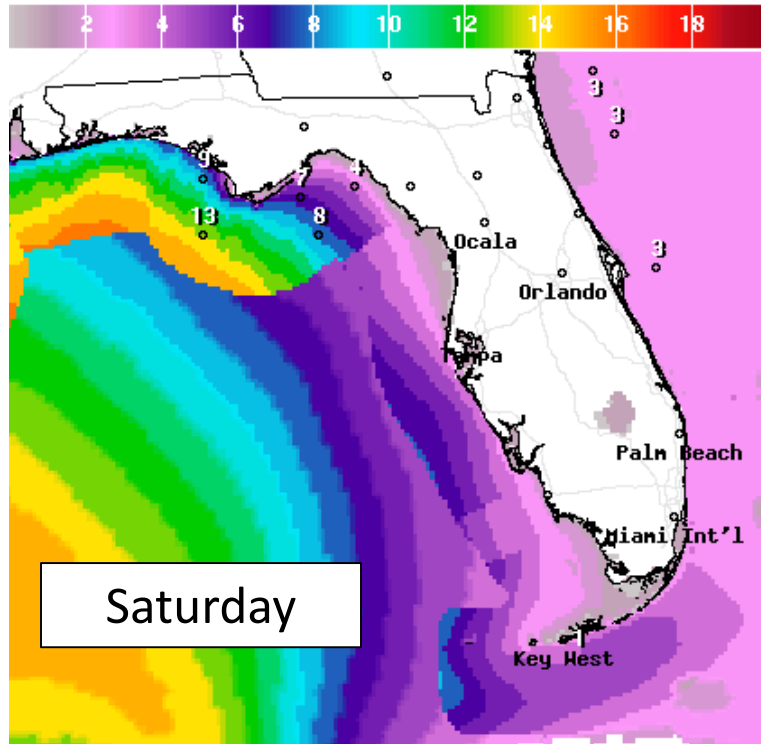
Current low river levels across the state will help to minimize river impacts.





Forecast Wave Heights

This Weekend

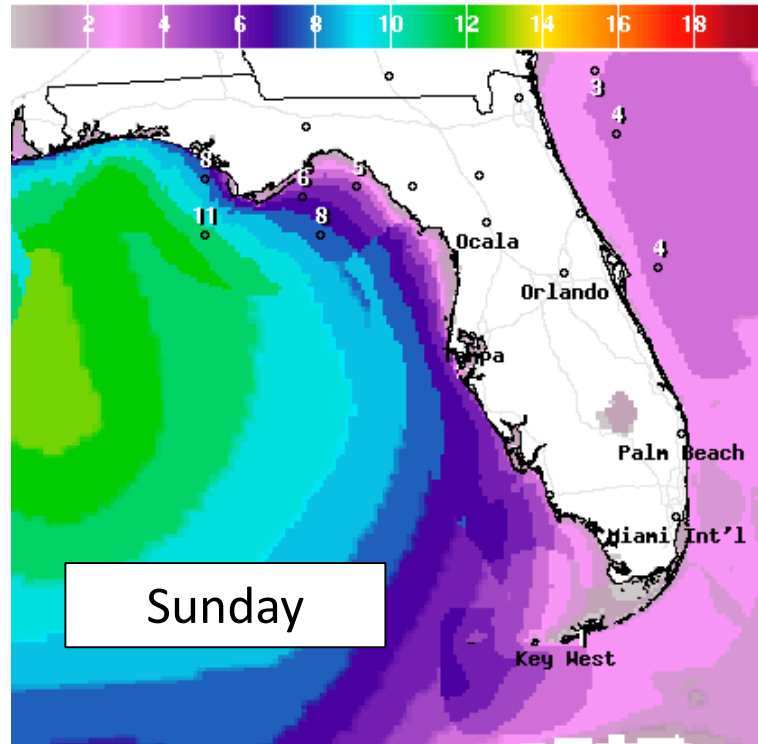


Saturday

Wave Height(ft) Ending Sat Jun 06 2020 8PM EDT
(Sun Jun 07 2020 00Z)



National Digital Forecast Database
13z issuance Graphic created-Jun 04 9:30AM EDT

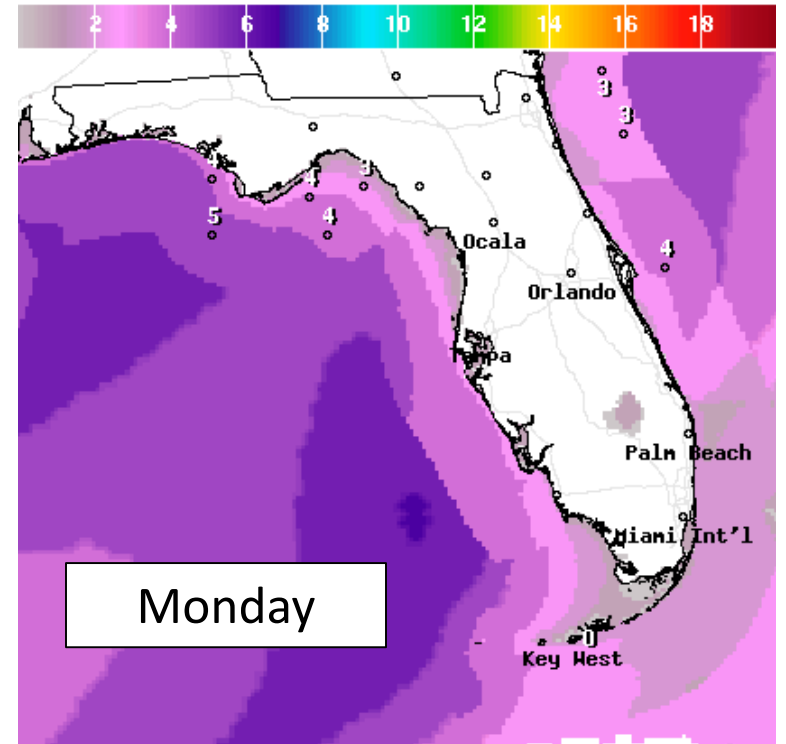


Sunday

Wave Height(ft) Ending Sun Jun 07 2020 8PM EDT
(Mon Jun 08 2020 00Z)



National Digital Forecast Database
13z issuance Graphic created-Jun 04 9:30AM EDT



Monday

Wave Height(ft) Ending Mon Jun 08 2020 8PM EDT
(Tue Jun 09 2020 00Z)



National Digital Forecast Database
13z issuance Graphic created-Jun 04 9:30AM EDT



Waves will build this weekend as Cristobal moves northward through the Gulf of Mexico. High surf of 6-10 feet will be possible at Panhandle Beaches with 3-7 feet along the West Coast. This will result in dangerous rip currents along all Gulf beaches. Minor beach erosion is also possible. Minor coastal flooding will also be possible this weekend with a persistent south to southeast wind.

Summary

Tropical Depression Cristobal

- As of 11 AM ET, the center of Cristobal is located just inland near the Mexico/Guatemala border, or about 775 miles southwest of Key West, FL, moving east-southeast at 3 mph.
- Maximum sustained winds have decreased to 35 mph. Cristobal will meander near the coast of the Yucatan Peninsula over the next couple of days before eventually lifting northward by late Thursday or Friday.
- Cristobal will likely re-strengthen to a tropical storm Friday once it emerges into the Gulf of Mexico
- This weekend, the system will continue to move northward and will approach the northern Gulf Coast Sunday/Monday.
- Indirectly related to the system, tropical moisture will increase across the Gulf Coast through the end of the week, raising daily rain chances.

Florida Outlook:

- Cristobal will have no direct impacts to Florida through Friday, but widespread rainfall is likely by this weekend.
- Tropical moisture returns to the state indirectly associated with Cristobal into the weekend. This could lead to localized flooding each day.
- The rip current risk and wave heights will begin to increase along the Gulf Coast later this week- particularly in the western Panhandle.
- Confidence is increasing in the threat of flash flooding or river flooding this weekend.
- A widespread 3-6" of rain is forecast to fall across the state over the next week. This will come from multiple rounds of rainfall over multiple days. Rain bands and training thunderstorms will result locally higher amounts, perhaps up to 6-12".
- Gusty winds, perhaps to tropical storm force, will be possible in coastal parts of the western Panhandle.
- Storm surge may cause minor coastal flooding along the Panhandle, Big Bend, and Nature Coast.
- Tropical Storm and Storm Surge Watches may be issued tonight or Friday for parts of North Florida.

The next briefing packet will be sent out this afternoon with the 5 PM ET advisory. For the latest information on the tropics, please visit the National Hurricane Center website at www.hurricanes.gov.



TROPICAL UPDATE



Created by:

Cameron Young, Assistant State Meteorologist

Cameron.Young@em.myflorida.com

State Meteorological Support Unit

Florida Division of Emergency Management

Users wishing to subscribe (approval pending) to this distribution list, register at:

https://public.govdelivery.com/accounts/FLDEM/subscriber/new?topic_id=SERT_Met_Tropics.

Other reports available for subscription are available at:

<https://public.govdelivery.com/accounts/FLDEM/subscriber/new?preferences=true>