



TROPICAL UPDATE



5:00 PM EDT

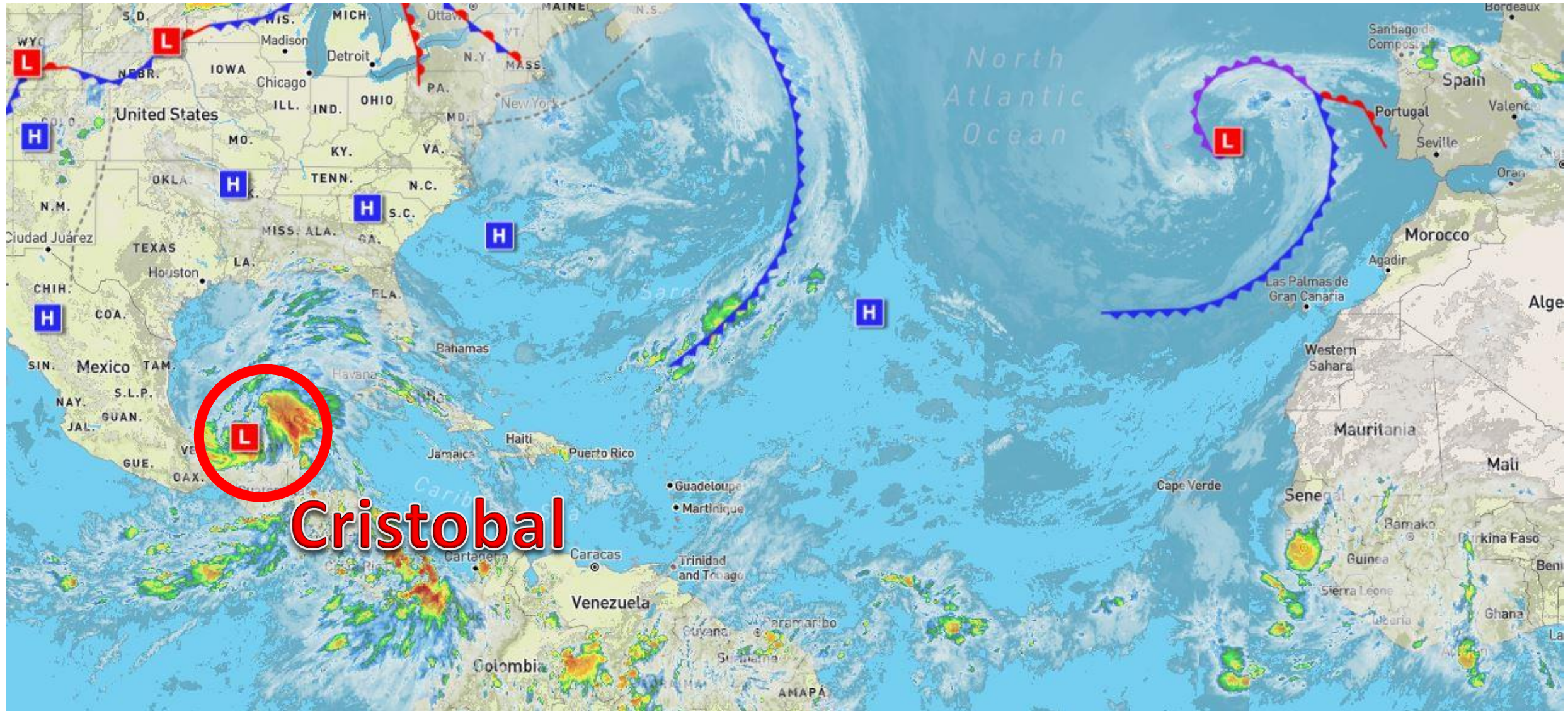
Tuesday, June 2, 2020

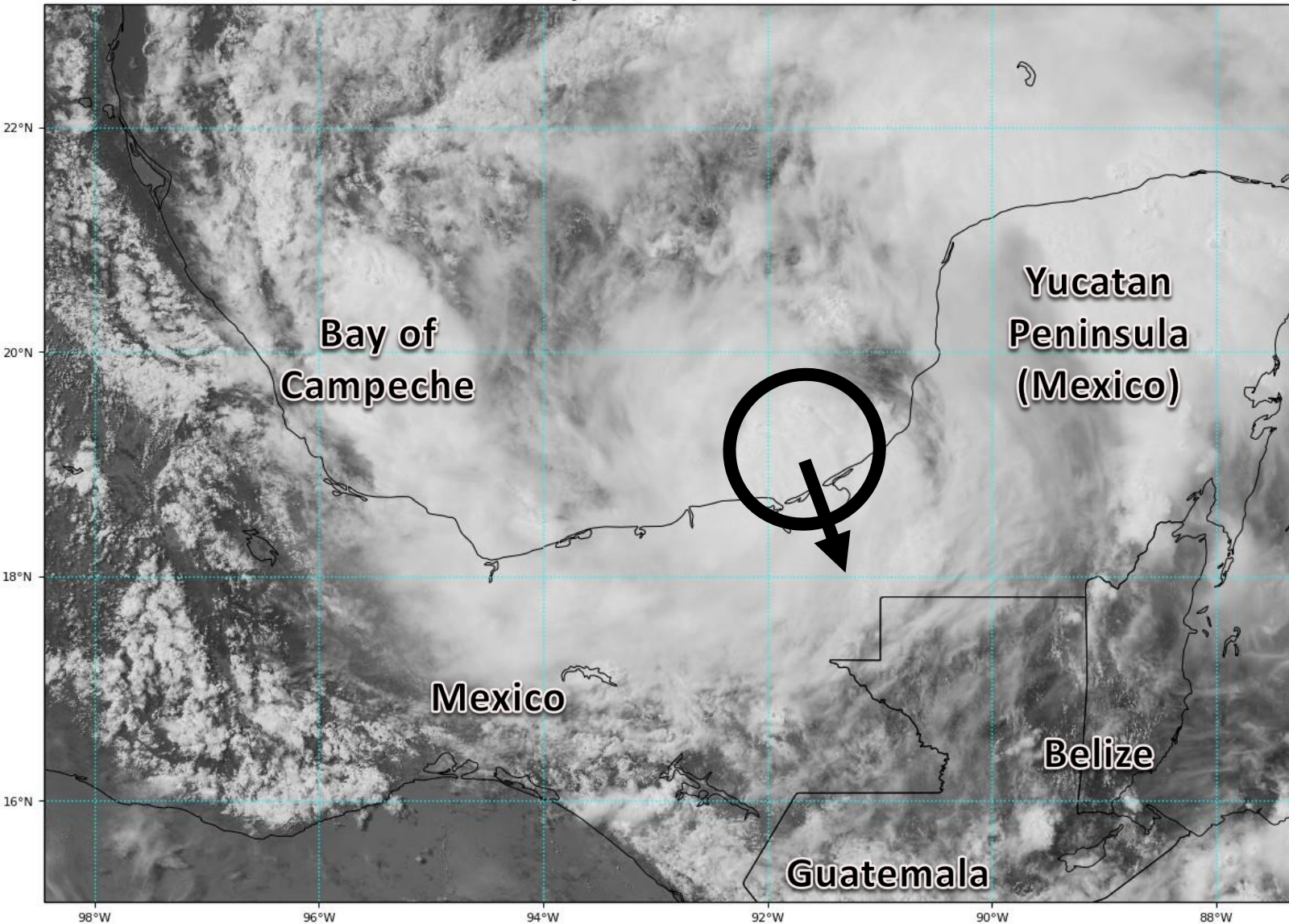
Tropical Storm Cristobal

This update is intended for government and emergency response officials, and is provided for informational and situational awareness purposes only. Forecast conditions are subject to change based on a variety of environmental factors. For additional information, or for any life safety concerns with an active weather event please contact your County Emergency Management or Public Safety Office, local National Weather Service forecast office, or visit the National Hurricane Center website at www.hurricanes.gov.

Atlantic Basin Satellite Image

Chance of development: — None — Low — Medium — High





Visible Satellite Imagery: Tropical Storm Cristobal

Air Force Hurricane Hunters found Tropical Depression Three had strengthened into Tropical Storm Cristobal at 1 PM ET.

The center of the system (black circle) remains over water, but has drifted back towards the coast today and is nearing landfall in Mexico. It is currently moving to the south at 3 MPH.



Note: The cone contains the probable path of the storm center but does not show the size of the storm. Hazardous conditions can occur outside of the cone.

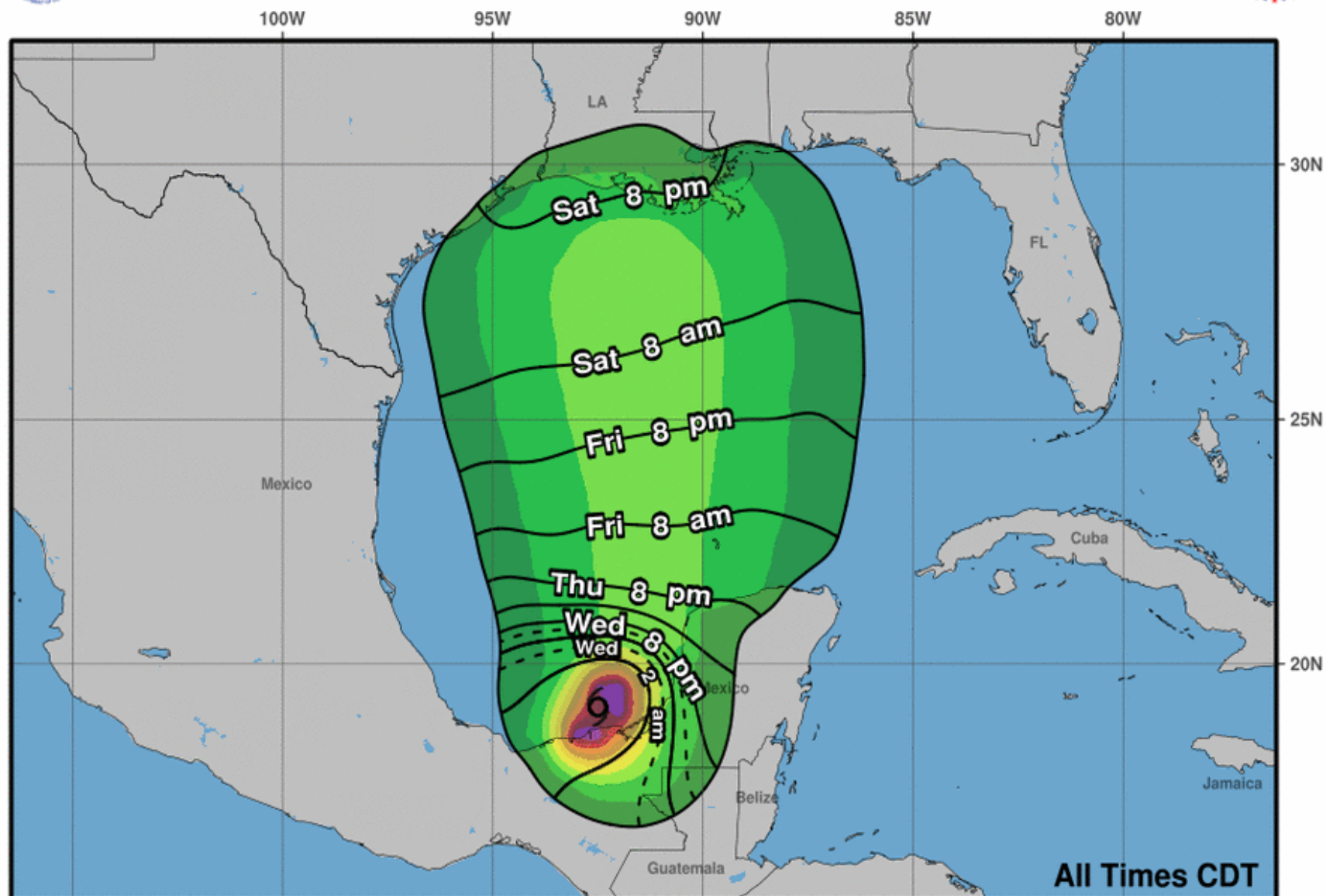
Projected Path: Tropical Storm Cristobal

- The center of Cristobal is located about 140 miles west of Campeche, Mexico, or about 800 miles southwest of Key West, FL.
- Maximum sustained winds are at 40 mph.
- The system will meander over the Bay of Campeche or just inland over Mexico for the next couple of day before turning northward on Friday.
- On Sunday, the system is likely to be approaching the northern Gulf Coast.

Tropical Storm Cristobal Tuesday June 02, 2020 4 PM CDT Advisory 5 NWS National Hurricane Center		Current information: x Center location 19.1 N 92.5 W Maximum sustained wind 40 mph Movement S at 3 mph		Forecast positions: ● Tropical Cyclone ○ Post/Potential TC Sustained winds: D < 39 mph S 39-73 mph H 74-110 mph M > 110 mph	
Potential track area: Day 1-3 Day 4-5		Watches: Hurricane Trop Stm		Warnings: Hurricane Trop Stm	
Current wind extent: Hurricane Trop Stm					



Earliest Reasonable Arrival Time of Tropical-Storm-Force Winds



Tropical Storm Cristobal
Tue. Jun. 2, 2020 4 pm CDT
Advisory 5

Storm Location & Wind Speed
○ < 34 kt (39 mph)
○ 34-63 kt (39-73 mph)
● ≥ 64 kt (74 mph)

5-day chance of receiving sustained 34+ kt (39+ mph) winds
5 10 20 30 40 50 60 70 80 90 100 %



Key Messages for Tropical Storm Cristobal

Advisory 5: 4:00 PM CDT Tue Jun 02, 2020



1. Deadly flooding has already occurred in portions of Guatemala and El Salvador, and Cristobal is expected to bring additional heavy rainfall to portions of southern Mexico, Guatemala, Honduras, and El Salvador, which could cause life-threatening flash flooding and mudslides. Refer to products from your national meteorological service for more information.

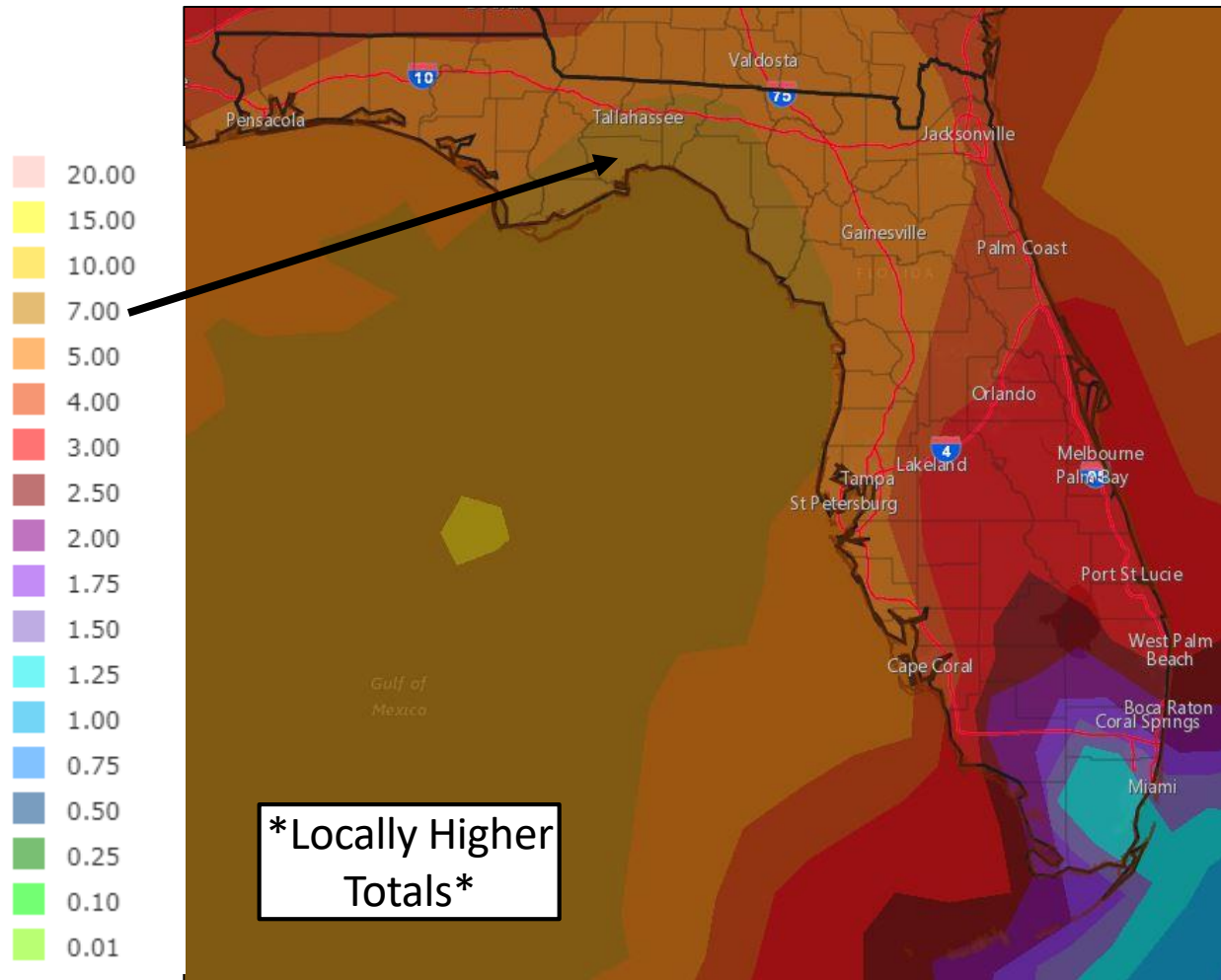
2. Tropical storm conditions will continue along the coast of Mexico where a tropical storm warning is in effect.

3. Cristobal is forecast to begin moving northward across the Gulf of Mexico on Friday, and there is a risk of storm surge, rainfall, and wind impacts this weekend along portions of the U.S. Gulf Coast from Texas to the Florida Panhandle. While it is too soon to determine the exact location, timing, and magnitude of these impacts, interests in these areas should monitor the progress of Cristobal and ensure they have their hurricane plan in place.



For more information go to hurricanes.gov

Rainfall Totals Next 7 Days



WPC Weekly Hazards Outlook



- Regardless of track and intensity of Cristobal and indirectly related, tropical moisture returns to the state starting Wednesday night and lasting into the weekend.
- Heavy rainfall (widespread 3-6") is forecast over the next several days, especially along the Gulf Coast. *This rainfall will come in multiple rounds over multiple days.*
- An isolated case of flash flooding will be possible each day across urban areas.

Summary

Tropical Storm Cristobal (formerly Tropical Depression Three)

- No significant changes today!
- Tropical Depression Three strengthened into Tropical Storm Cristobal earlier this afternoon.
- As of 5 PM ET, the center of Cristobal is located about 800 miles southwest of Key West, Florida or 140 miles west of Campeche, Mexico.
- Maximum sustained winds were at 40 mph and movement was to the south at 3 mph.
- Cristobal will move very little over the next couple of days and meander in the Bay of Campeche in the southwestern Gulf of Mexico over just inland across the Yucatan Peninsula. Intensity of the system will depend on if it remains over water or inland over Mexico.
- This weekend, the system will begin to move northward and will approach the northern Gulf Coast Sunday/Monday. DETAILS ARE UNKNOWN.
- Indirectly related to the system, tropical moisture will increase across the Gulf Coast later this week raising daily rain chances.
- Hurricane Hunters will continue regular flights into the system as long as it remains over water.

Florida Outlook:

- Cristobal will have no direct impacts to Florida through the end of the week, but should continue to be monitored.
- The rip current risk and wave heights will begin to increase along the Gulf Coast later this week- particularly in the western Panhandle.
- Increasing flood threat for North Florida is being monitored
- Tropical moisture returns to the state indirectly associated with Cristobal starting Wednesday night and lasting into the weekend.
- A widespread 3-6" of rain is forecast to fall across the state over the next week. This will come from multiple rounds of rainfall over multiple days. Some heavier thunderstorms may result in minor flooding in urban areas, particularly along the Gulf Coast.

The next briefing packet will be sent out Wednesday morning with the 11 AM ET advisory. For the latest information on the tropics, please visit the National Hurricane Center website at www.hurricanes.gov. For more details on daily weather conditions across the state, wildfire/weather briefings are being uploaded to WebEOC Info Message #1116 each morning.



TROPICAL UPDATE



Created by:

Michael Spagnolo, Deputy State Meteorologist

Michael.Spagnolo@em.myflorida.com

State Meteorological Support Unit

Florida Division of Emergency Management

Users wishing to subscribe (approval pending) to this distribution list, register at:

https://public.govdelivery.com/accounts/FLDEM/subscriber/new?topic_id=SERT_Met_Tropics.

Other reports available for subscription are available at:

<https://public.govdelivery.com/accounts/FLDEM/subscriber/new?preferences=true>