



# TROPICAL UPDATE



5:00 PM EDT

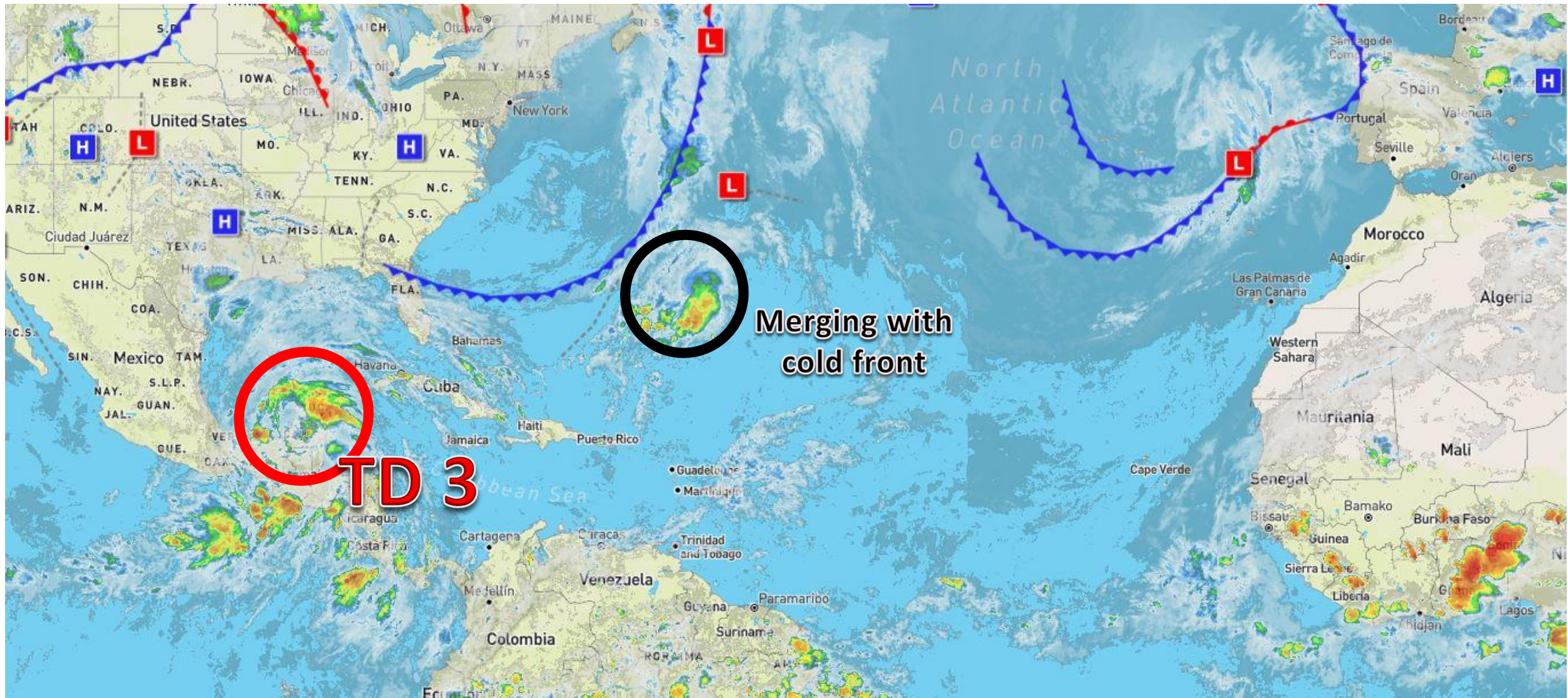
Monday, June 1, 2020

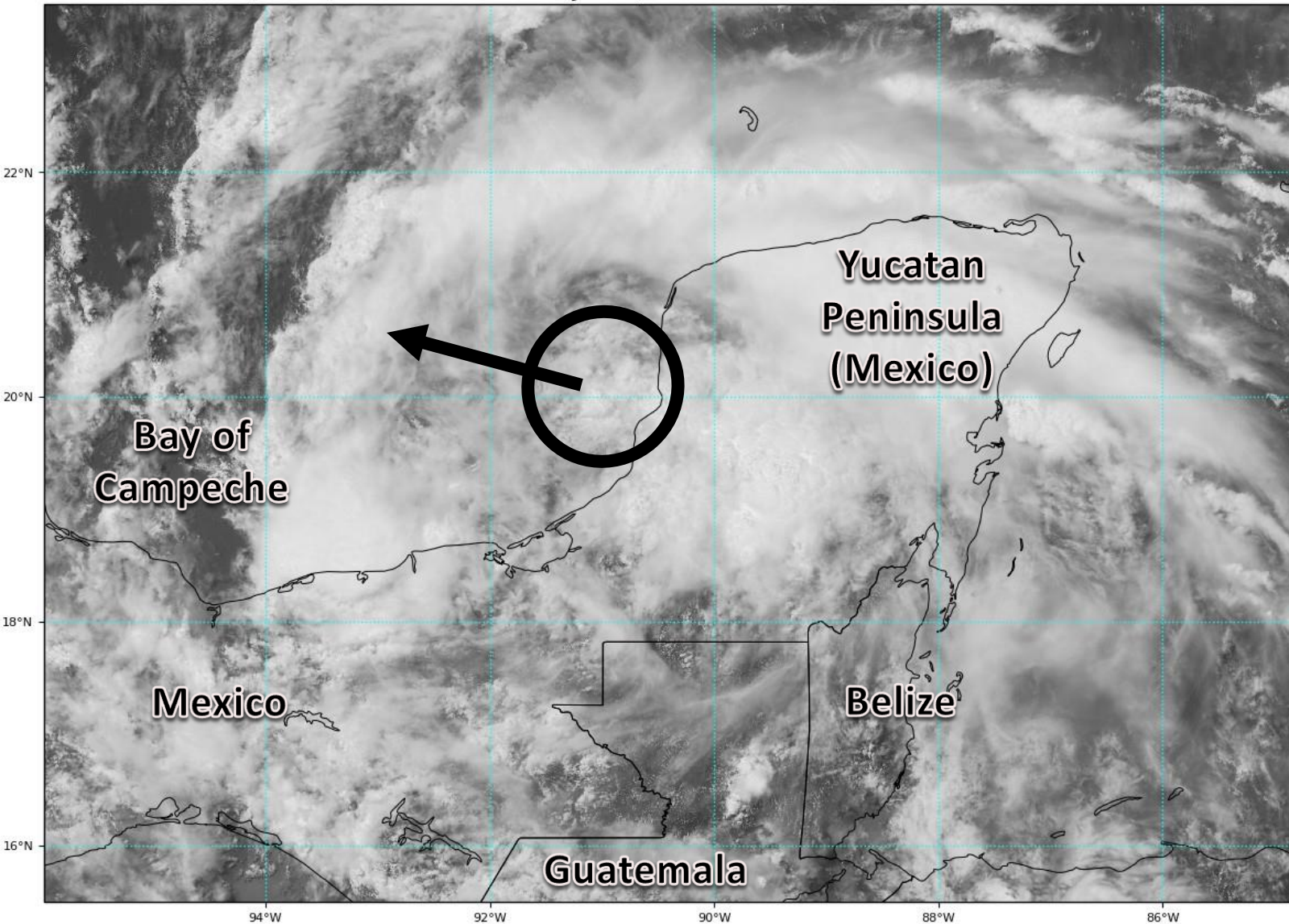
Tropical Depression Three

This update is intended for government and emergency response officials, and is provided for informational and situational awareness purposes only. Forecast conditions are subject to change based on a variety of environmental factors. For additional information, or for any life safety concerns with an active weather event please contact your County Emergency Management or Public Safety Office, local National Weather Service forecast office, or visit the National Hurricane Center website at [www.hurricanes.gov](http://www.hurricanes.gov).

# Atlantic Basin Satellite Image

Chance of development: — None    — Low    — Medium    — High





## Visible Satellite Imagery:

### Tropical Depression

### Three

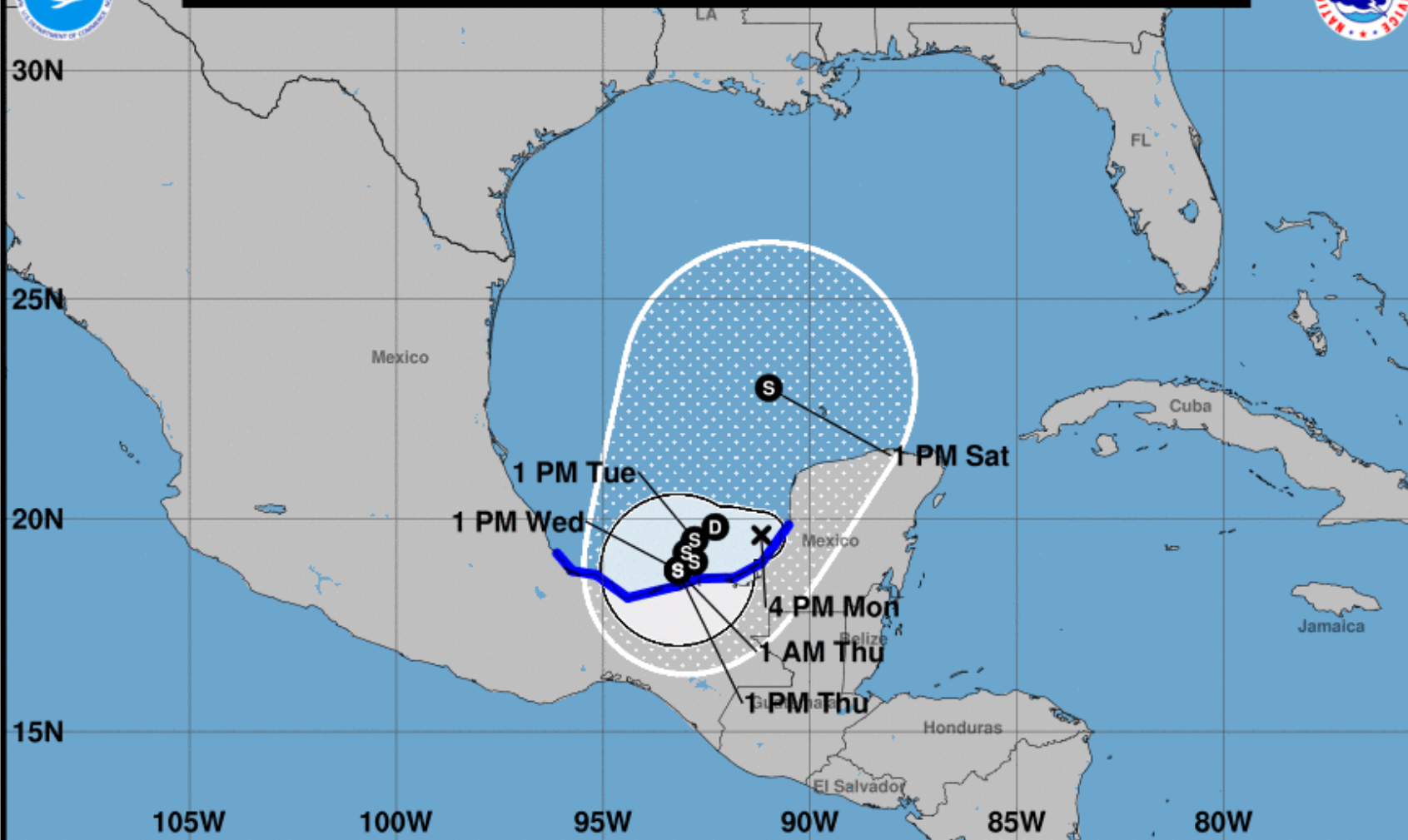
The center of the system (black circle) has moved back over water this afternoon, now located in the Bay of Campeche (far Southwestern Gulf of Mexico).

The system remains well organized for spending the last couple of days over land. It is a little asymmetrical with most of the thunderstorms to the northeast of the center.

The National Hurricane Center began advisories on the system at 5 PM ET.



Note: The cone contains the probable path of the storm center but does not show the size of the storm. Hazardous conditions can occur outside of the cone.



### Tropical Depression Three

Monday June 01, 2020  
4 PM CDT Advisory 1  
NWS National Hurricane Center

### Current information: x

Center location 19.6 N 91.2 W  
Maximum sustained wind 30 mph  
Movement WNW at 7 mph

### Forecast positions:

● Tropical Cyclone ○ Post/Potential TC  
Sustained winds: D < 39 mph  
S 39-73 mph H 74-110 mph M > 110 mph

### Potential track area:

Day 1-3 Day 4-5

### Watches:

Hurricane Trop Stm

### Warnings:

Hurricane Trop Stm

### Current wind extent:

Hurricane Trop Stm

## Projected Path: Tropical Depression Three

- The center of Tropical Depression Three is located about 50 miles west of Campeche, Mexico, or about 700 miles southwest of Key West, FL.
- Maximum sustained winds are at 30 mph and TD3 is moving to the west-northwest at 7 mph.
- The system will meander over the Bay of Campeche for the next couple of days before turning northward.
- Tropical Depression Three will strengthen into Tropical Storm Cristobal sometime tonight or Tuesday. Some gradual strengthen is possible this week, but only if the system remains over water. Any movement over the mountainous terrain of Mexico will result in rapid weakening.

# National Hurricane Center Key Message

“The system is forecast to begin moving northward across the Gulf of Mexico later this week. However, it is too soon to specify the location and timing of any potential impacts along the U.S. Gulf Coast. Interests in these areas should monitor the progress of this system through the week and ensure they have their hurricane plan in place as we begin the season.”



# Earliest Reasonable Arrival Time of Tropical-Storm-Force Winds



**Tropical Depression Three**  
**Mon. Jun. 1, 2020 4 pm CDT**  
**Advisory 1**

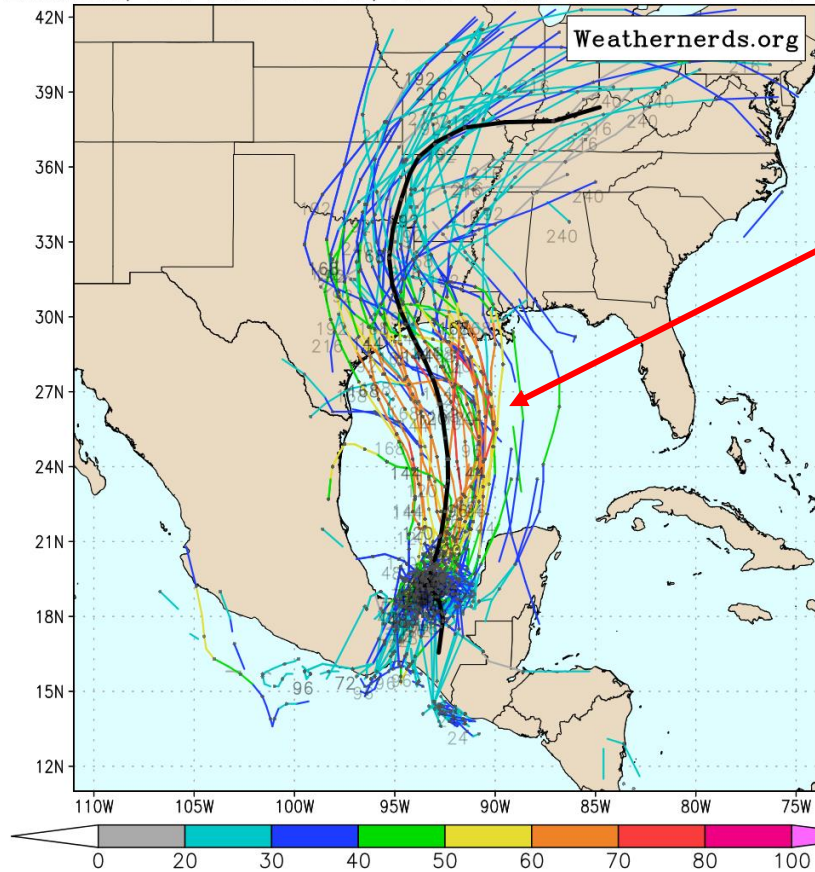
Storm Location & Wind Speed  
○ < 34 kt (39 mph)  
◉ 34-63 kt (39-73 mph)  
● ≥ 64 kt (74 mph)

5-day chance of receiving sustained 34+ kt (39+ mph) winds  
5 10 20 30 40 50 60 70 80 90 100 %

# Model Ensemble Tracks

ECMWF Ensemble, init: 2020060112, AL93 Invest

color = max wind (kt)

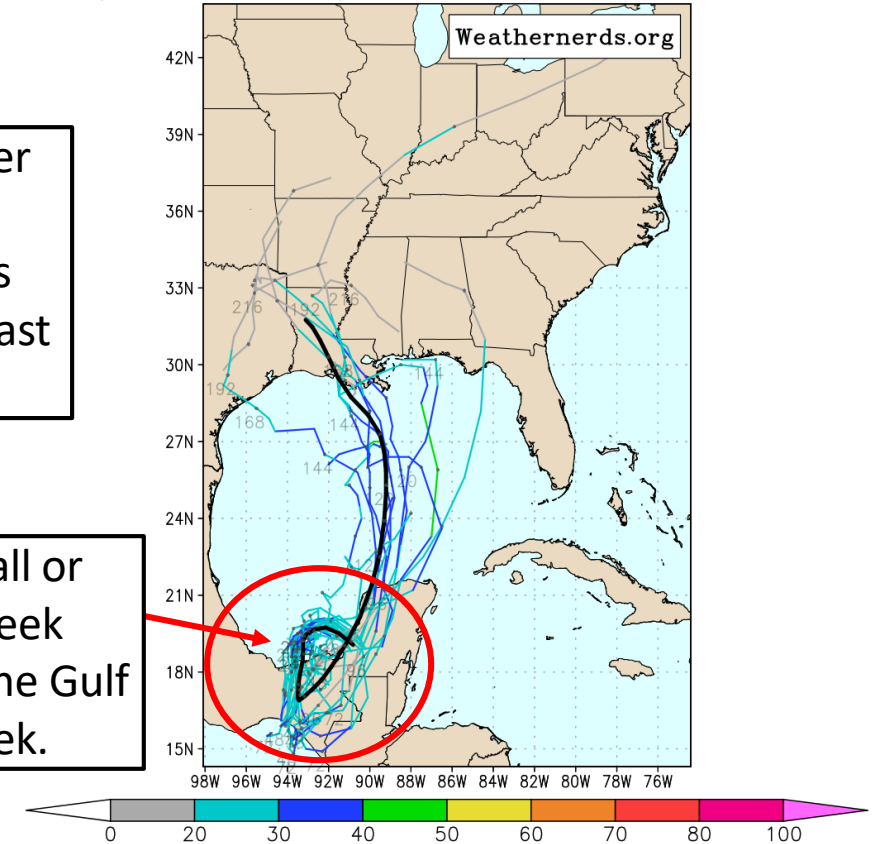


Some opportunity for quicker development on a more northward track that brings direct impacts to the Gulf Coast early in the weekend

BUT! The system may stall or complete a loop mid-week delaying the approach to the Gulf Coast to early next week.

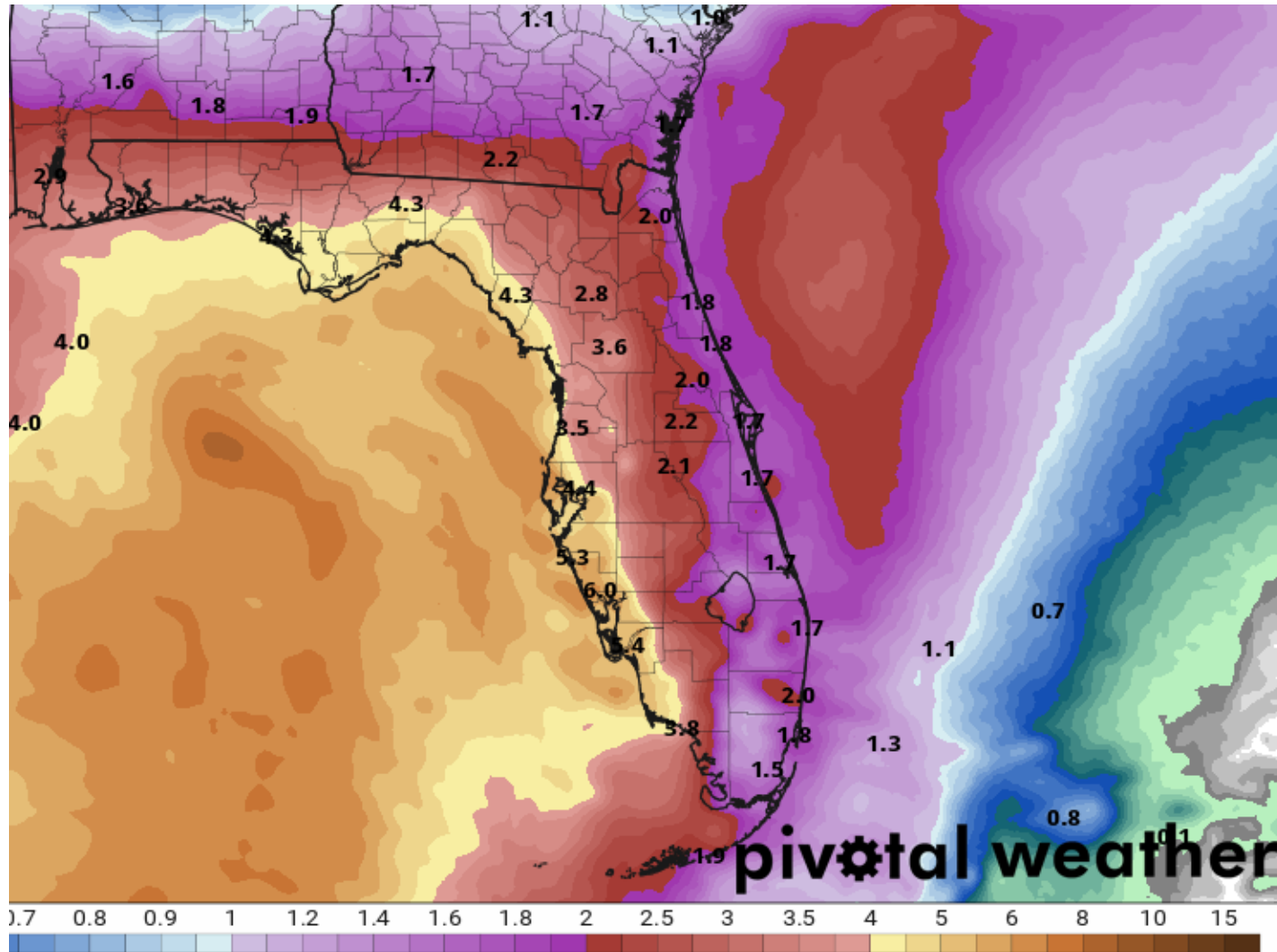
GFS Ensemble, init: 2020060112, AL93 Invest

color = max wind (kt)



- Tropical Depression Three will move very little over the next 2-4 days in the Bay of Campeche.
- It may move back over land, completing a loop, which would limit development of the system
- At some point late this week or early next week, a disturbance seems likely to move northward and directly impact the central or western Gulf Coast.
- IT IS TOO EARLY TO KNOW WHERE THE SYSTEM WOULD GO OR WHAT IMPACTS IT WILL HAVE

# Rainfall Totals This Week

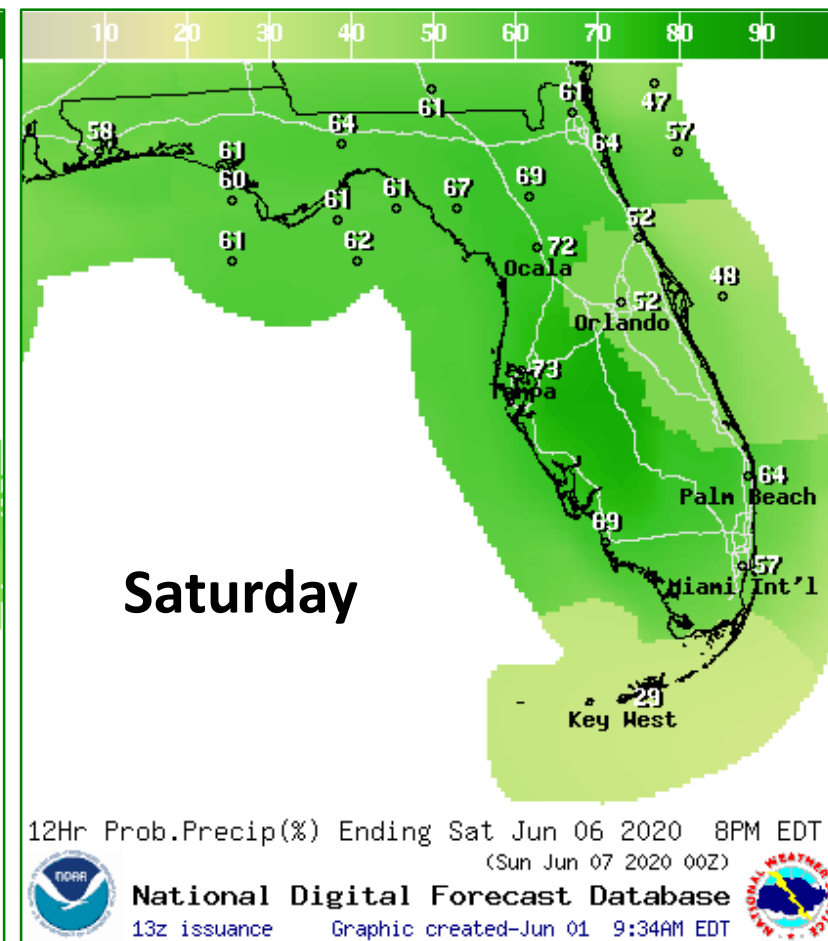
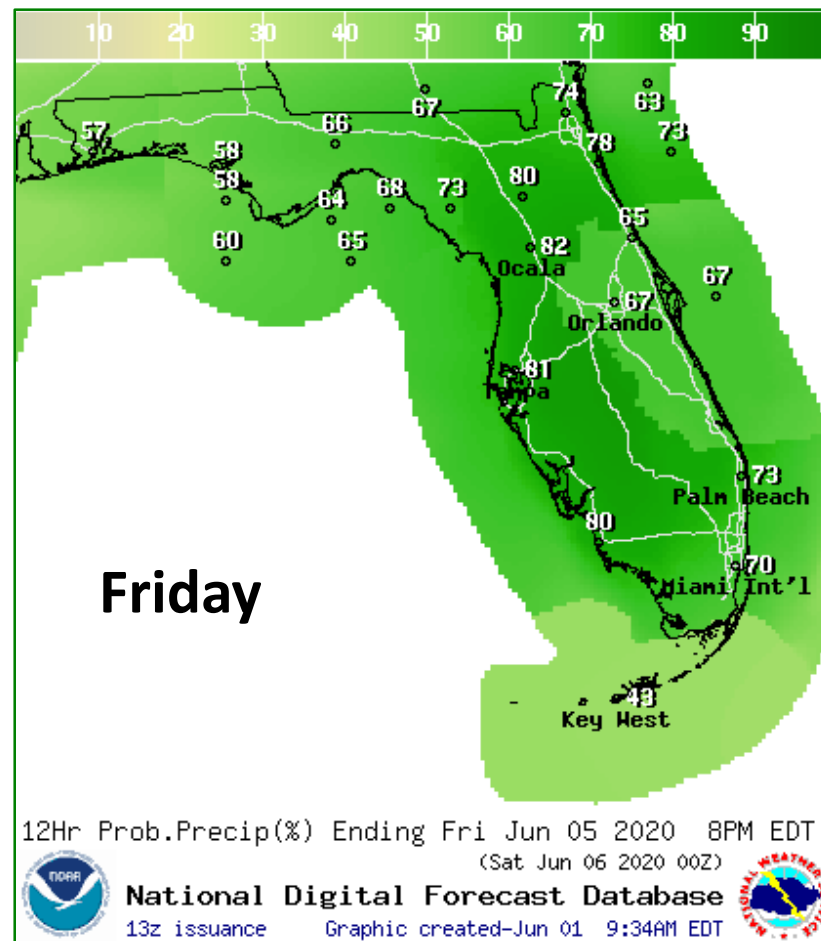
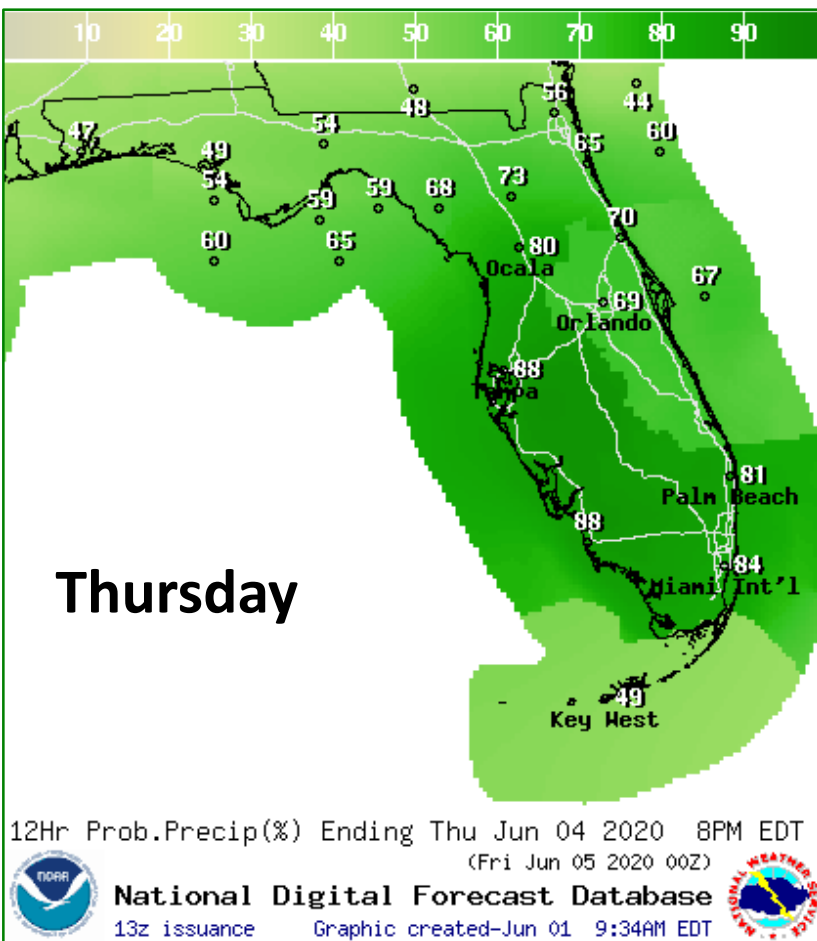


## WPC Weekly Hazards Outlook



- Regardless of development and indirectly related to 93L, tropical moisture returns to the state starting Wednesday night.
- Heavy rainfall (widespread 2-5") is possible later this week, especially along the Gulf Coast

# Rain Chances Late Week



**Seasonable Afternoon Showers and Thunderstorms Monday-Wednesday**

**Increasing Rain Chances by Thursday and Into the Weekend**

# Summary

## **Tropical Depression Three (Formerly Invest 93L)**

- The tropical disturbance near the Yucatan Peninsula continued to move northwest today and has emerged over the southwestern Gulf of Mexico/Bay of Campeche.
- The system continued to organized today and the National Hurricane Center began advisories on Tropical Depression Three at 5 PM ET Monday.
- The center of TD3 was located about 700 miles southwest of Key West, Florida or 50 miles west of Campeche, Mexico.
- Maximum sustained winds were at 30 mph and movement was to the west-northwest at 7 mph.
- Tropical Depression Three will move very little over the next couple of days and meander in the Bay of Campeche in the southwestern Gulf of Mexico where strengthening into a tropical storm is likely tonight or Tuesday.
- Late in the week, the forecast is uncertain. It may move back over land and weaken over Mexico or it may remain over water and drift northward towards the northern Gulf Coast this weekend. DETAILS ARE UNKNOWN.
- Indirectly related to the system, tropical moisture will increase across the Gulf Coast later this week raising daily rain chances.
- The next name on the list is Cristobal (kree-TOH-bahl).

## **Florida Outlook:**

- Tropical Depression Three will have no impact to Florida through mid-week, but should continue to be monitored.
- Typical summertime thunderstorms are expected across the state each afternoon through Wednesday.
- Tropical moisture returns to the state indirectly associated with Tropical Depression Three starting Wednesday night and potentially lasting into the weekend. Rain chances will be high with localized heavy rainfall and a few strong thunderstorms.
- 7-day rainfall totals across the state are forecast to be a widespread 2-5”.

The next full briefing packet will be issued Tuesday morning. For the latest information on the tropics, please visit the National Hurricane Center website at [www.hurricanes.gov](http://www.hurricanes.gov). For more details on daily weather conditions across the state, wildfire/weather briefings are being uploaded to WebEOC Info Message #1116 each morning.



# TROPICAL UPDATE



Created by:

Michael Spagnolo, Deputy State Meteorologist

[Michael.Spagnolo@em.myflorida.com](mailto:Michael.Spagnolo@em.myflorida.com)

State Meteorological Support Unit

Florida Division of Emergency Management

Users wishing to subscribe (approval pending) to this distribution list, register at:

[https://public.govdelivery.com/accounts/FLDEM/subscriber/new?topic\\_id=SERT\\_Met\\_Tropics](https://public.govdelivery.com/accounts/FLDEM/subscriber/new?topic_id=SERT_Met_Tropics).

Other reports available for subscription are available at:

<https://public.govdelivery.com/accounts/FLDEM/subscriber/new?preferences=true>