



TROPICAL UPDATE



11:00 AM EDT

Monday, June 1, 2020

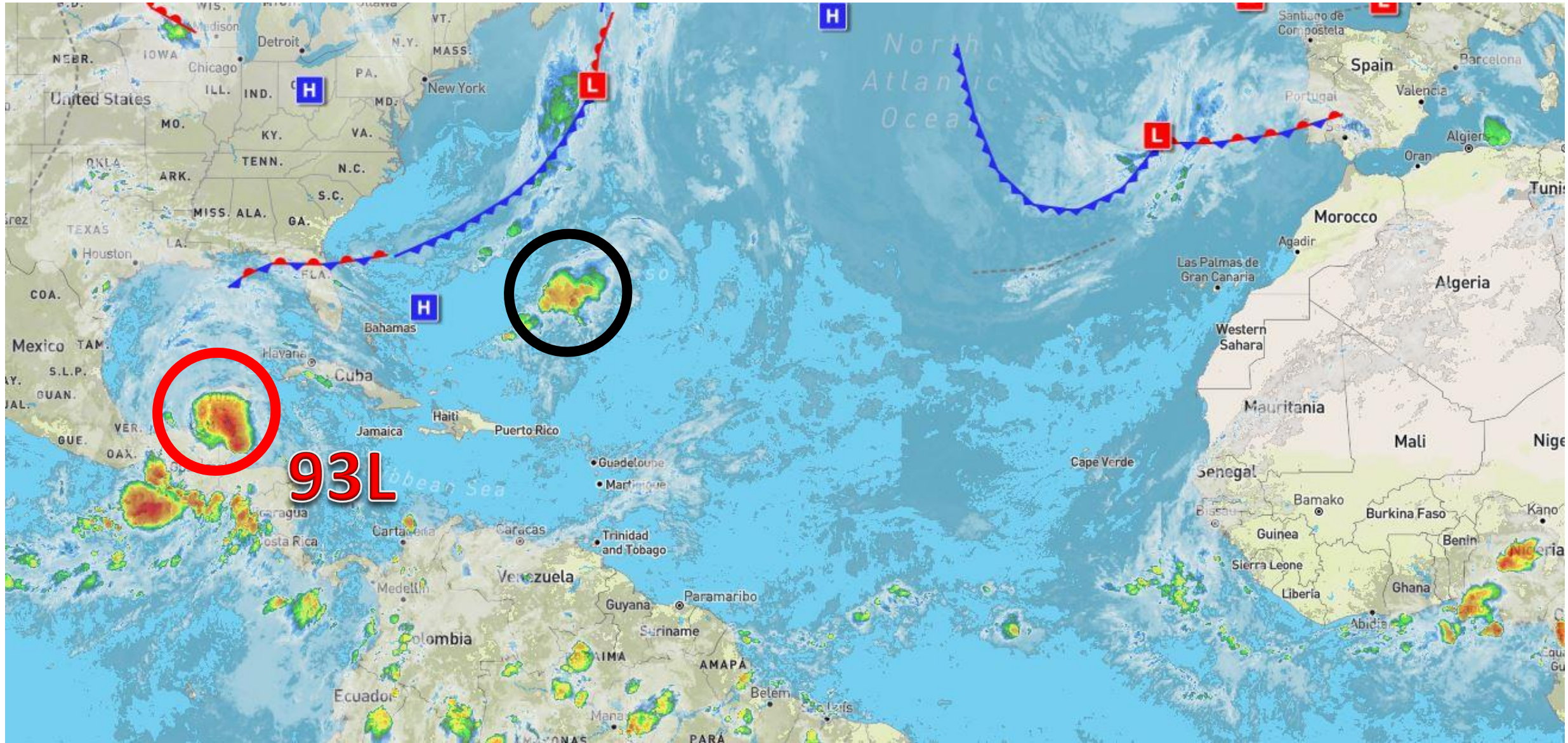
Southwestern Gulf of Mexico

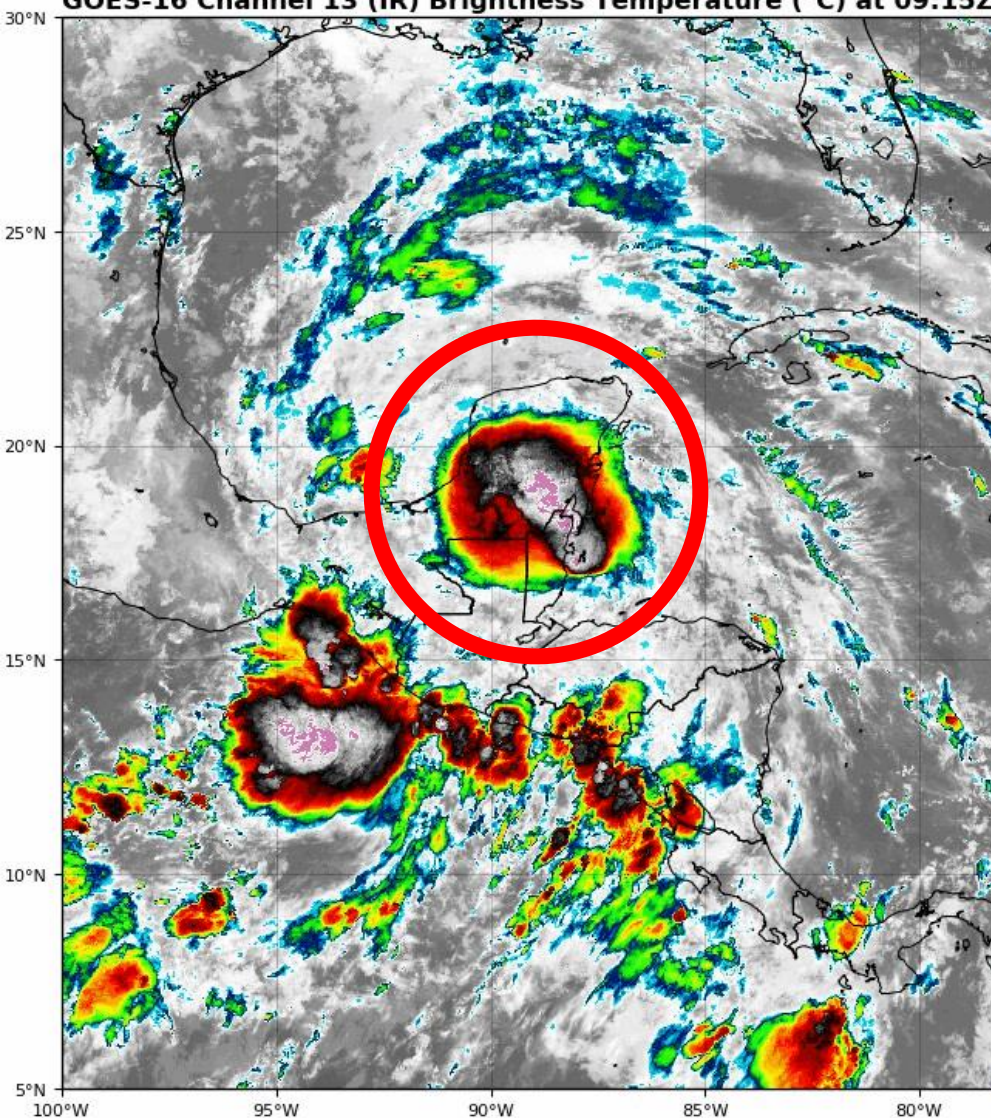
(Invest 93L - 80% High Chance of Development)

This update is intended for government and emergency response officials, and is provided for informational and situational awareness purposes only. Forecast conditions are subject to change based on a variety of environmental factors. For additional information, or for any life safety concerns with an active weather event please contact your County Emergency Management or Public Safety Office, local National Weather Service forecast office, or visit the National Hurricane Center website at www.hurricanes.gov.

Atlantic Basin Satellite Image

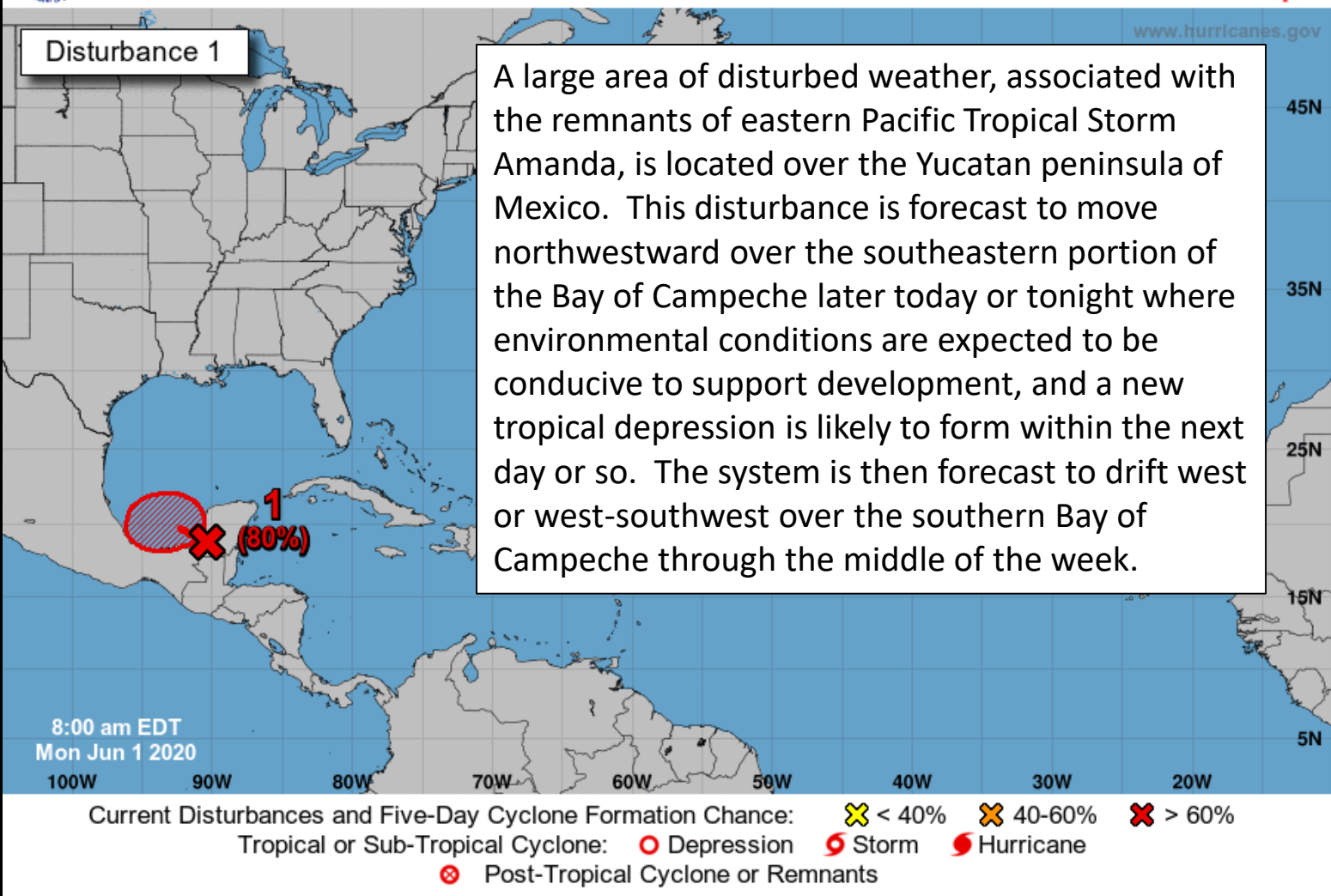
Chance of development: — None — Low — Medium — High





Five-Day Graphical Tropical Weather Outlook

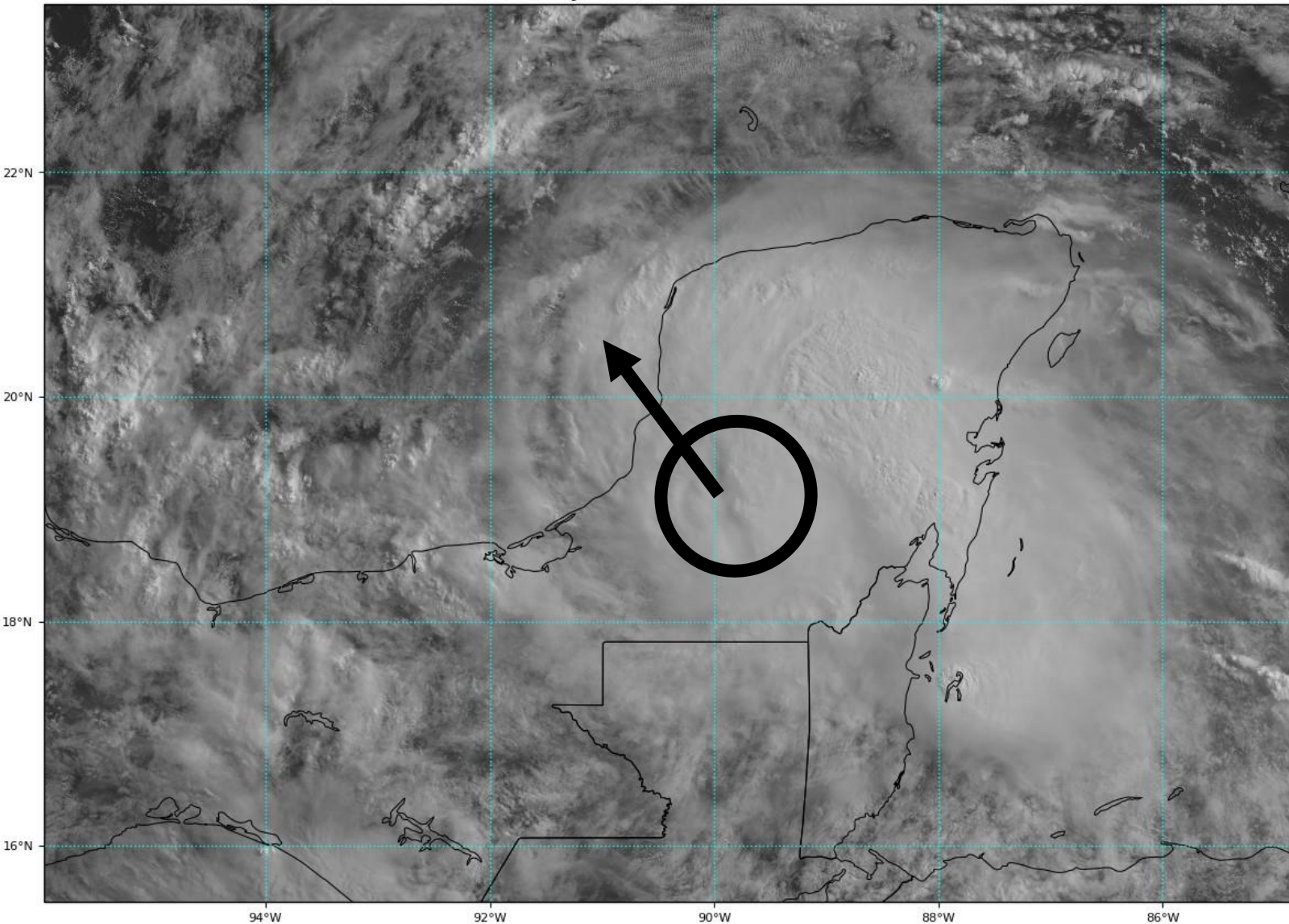
National Hurricane Center Miami, Florida



Remnants of East Pacific Tropical Storm Amanda / Southwestern Gulf of Mexico Low / Invest 93L

***Formation chance through 48 hours...high...80 percent.**

***Formation chance through 5 days...high...80 percent.**



Satellite Imagery: Invest 93L

The system remains organized despite spending the last day or so over land.

Most of the thunderstorms activity is to the north and east of the center (black circle).

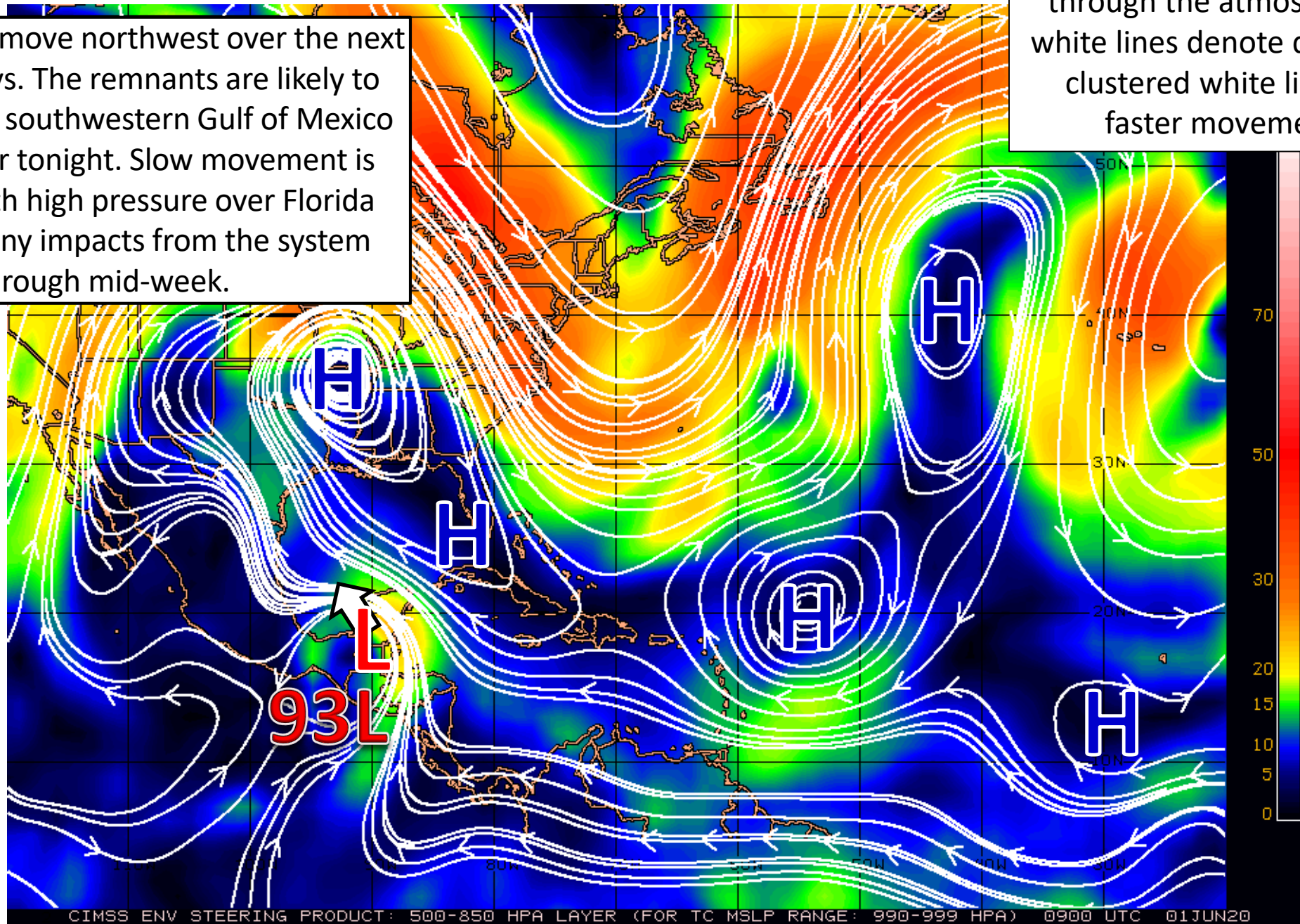
The system is likely to move back over water later today or tonight.

Development of this system into a tropical depression is likely over the next couple of days.

Steering Currents

93L will slowly move northwest over the next couple of days. The remnants are likely to emerge in the southwestern Gulf of Mexico later today or tonight. Slow movement is expected with high pressure over Florida preventing any impacts from the system through mid-week.

Color denotes the movement speed through the atmosphere and thin white lines denote direction. Tightly clustered white lines represent faster movement as well.



Fast Moving Storm

Fast Moving Storm

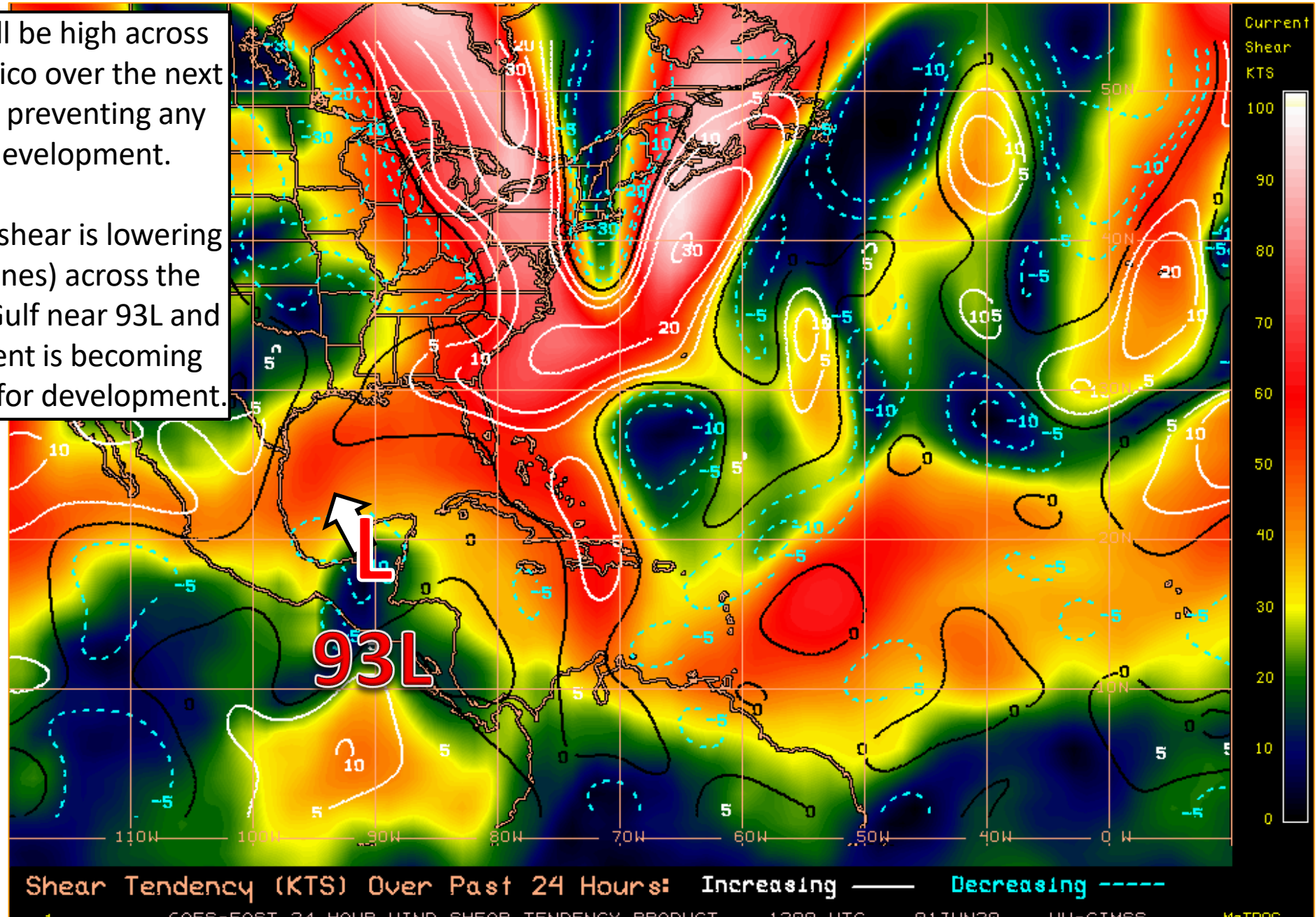
Typical Moving Storm

Slow Moving Storm

Wind Shear (shaded) and Wind Shear Tendencies (contoured)

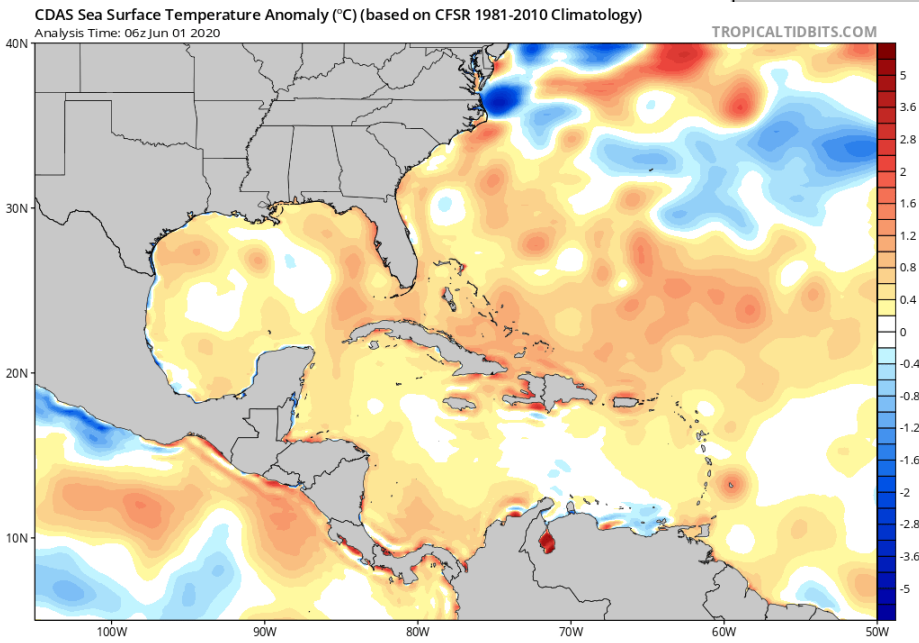
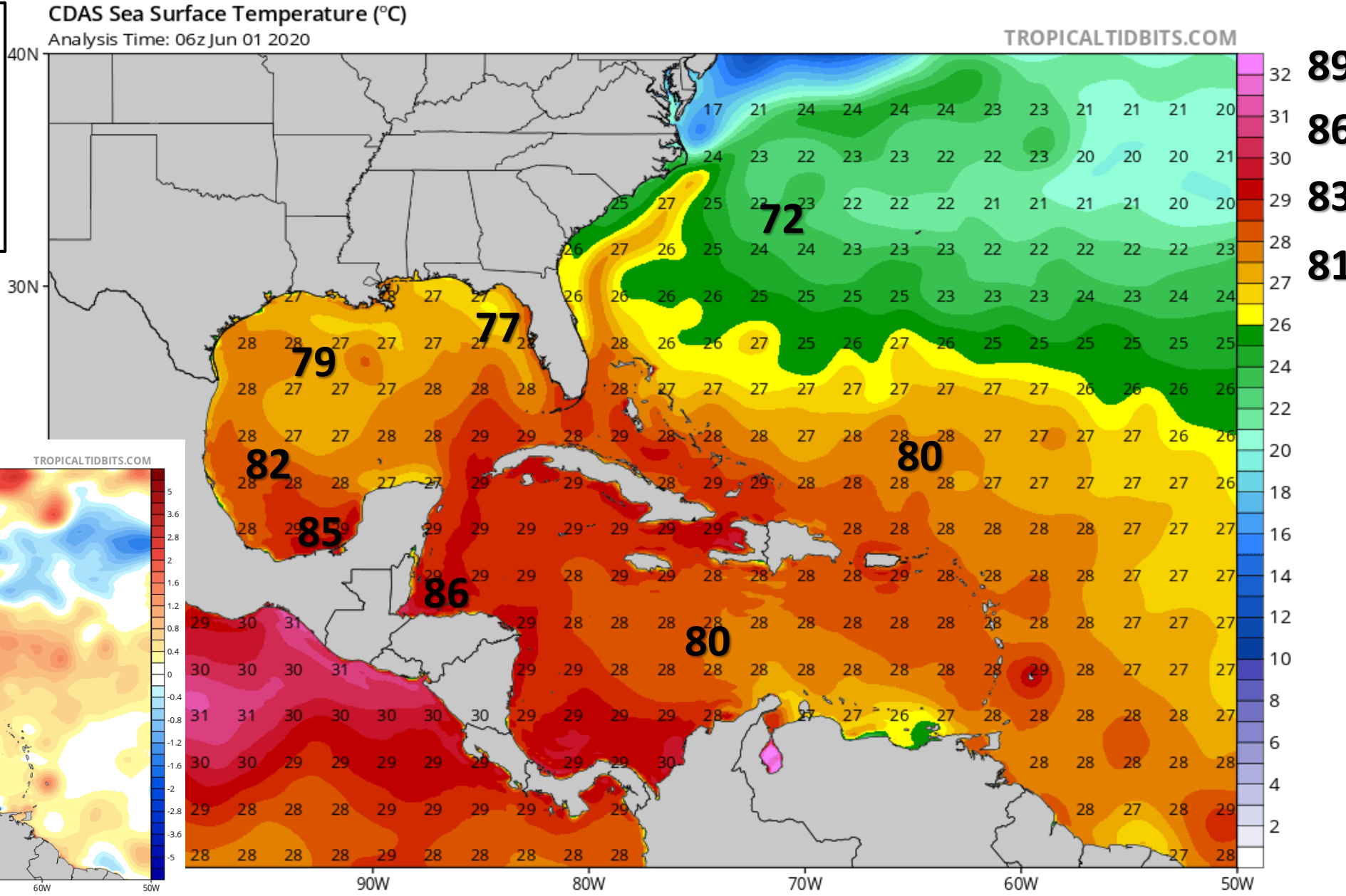
Wind shear will be high across the Gulf of Mexico over the next couple of days preventing any significant development.

However, wind shear is lowering (blue dotted lines) across the southwestern Gulf near 93L and the environment is becoming more favorable for development.

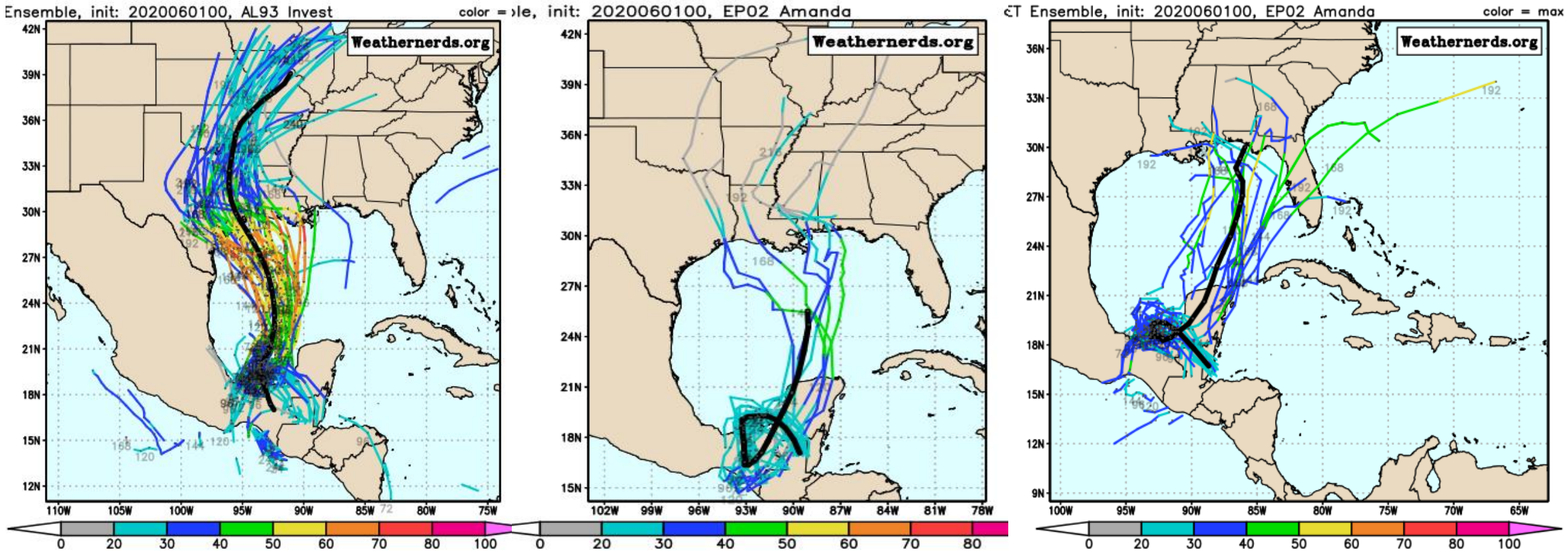


Western Atlantic Sea Surface Temperatures and Anomalies

Temperatures continue to warm across the Gulf of Mexico and Caribbean and remain a degree or so above normal. Water temperatures support tropical development.



Model Ensemble Tracks



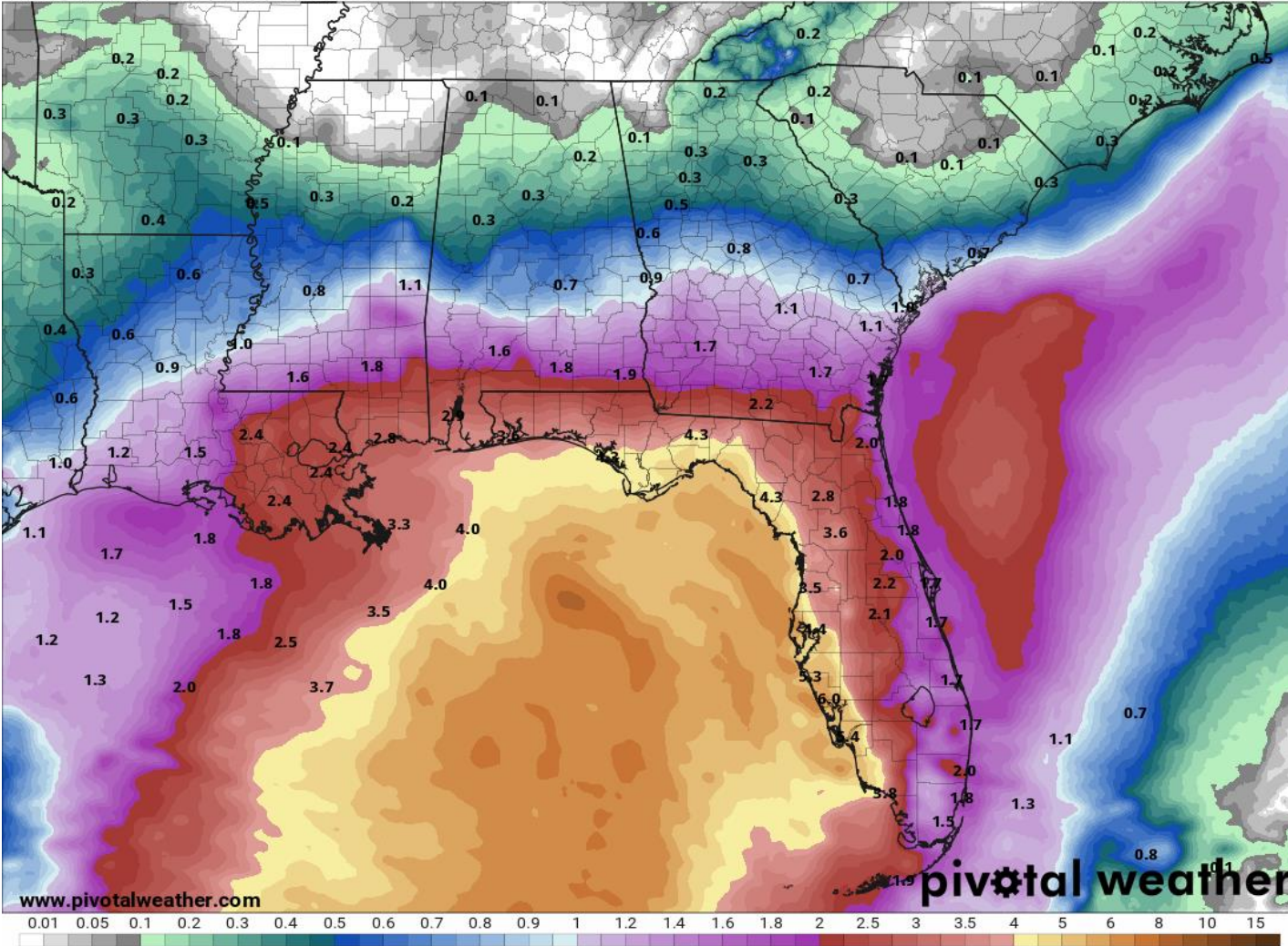
- Once the system moves over water tonight, it may loop back over land mid-week. This would greatly limit the impacts of the system, and it is possible it dissipates over land in Mexico.
- However, if it strengthens quickly and stays over water, it is likely to be pulled northward towards the northern Gulf Coast this weekend – more than likely west of Florida but....
- IT IS TOO EARLY TO KNOW WHERE THE SYSTEM WOULD GO IF IT DEVELOPS.

Rainfall Totals This Week

7-Day Precipitation (in)

Ending Monday, Jun. 8, 2020 at 8 a.m. EDT

Init: Mon 2020-06-01 12z WPC

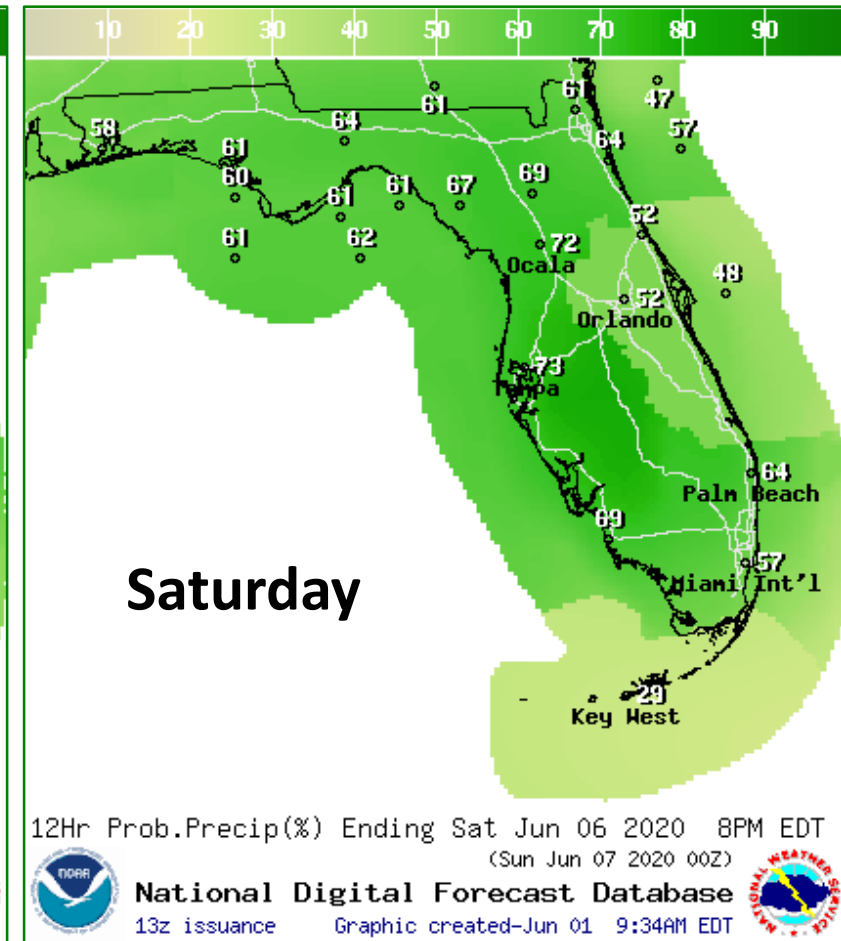
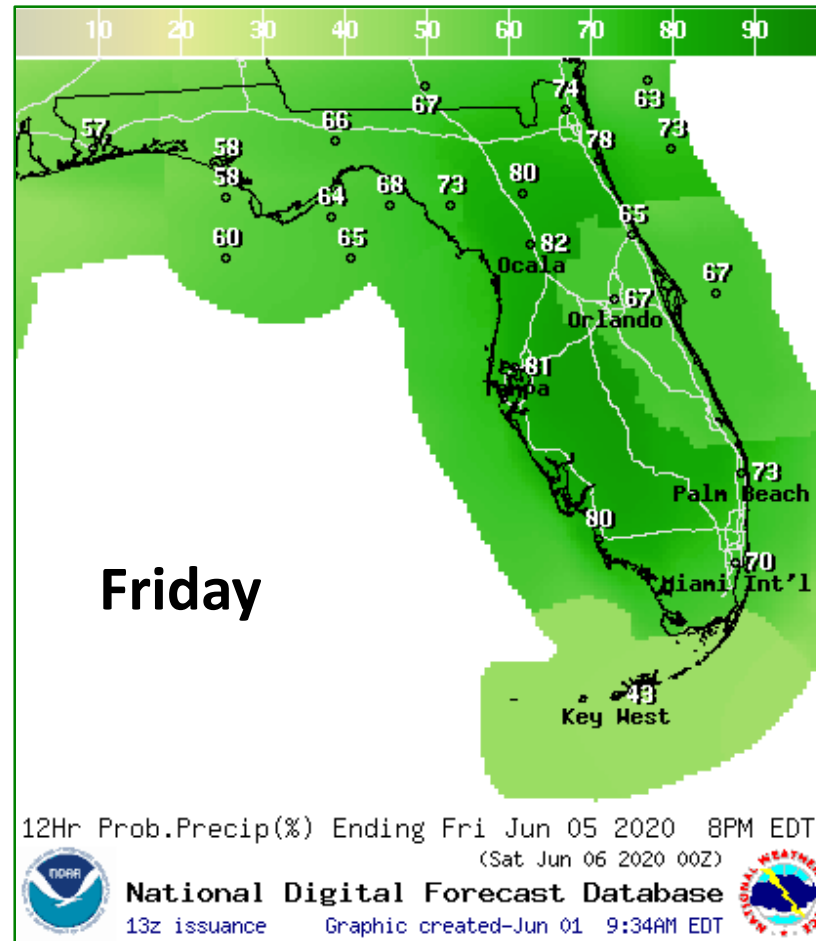
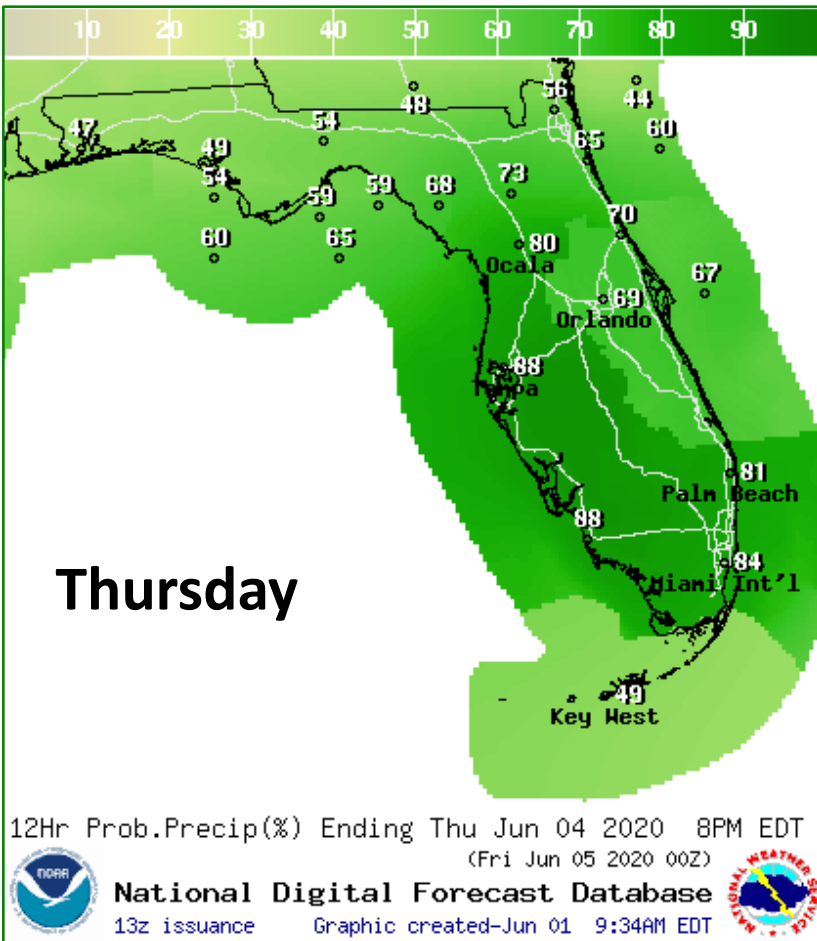


WPC Weekly Hazards Outlook



- Regardless of development, tropical moisture returns to the state starting Thursday
- Heavy rainfall (widespread 4-6") is possible later this week, especially along the Gulf Coast

Rain Chances Late Week



Seasonable Afternoon Showers and Thunderstorms Monday-Wednesday
Increasing Rain Chances by Thursday and Into the Weekend

Summary

Invest 93L / Southwestern Gulf of Mexico

- The remnants of East Pacific Tropical Storm Amanda continue to move north and are now located over the Yucatan Peninsula.
- The remnants will continue to move north and northwest towards the Bay of Campeche in the southwestern Gulf of Mexico. The remnants are likely to move back over water later today or tonight.
- Development of a new tropical depression is likely Tuesday or Wednesday as the system meanders over the warm waters of the southwest Gulf.
- Late in the week, the forecast is uncertain. It may move back over land and weaken over Mexico but may remain over water and drift northward towards the northern Gulf Coast. DETAILS ARE UNKNOWN.
- Indirectly related to the system, tropical moisture will increase across the Gulf Coast late week raising daily rain chances.
- The next name on the list is Cristobal (kree-TOH-bahl)

Florida Outlook:

- This system will have no impact to Florida through mid-week, but should continue to be monitored.
- Typical summertime thunderstorms are expected across the state each afternoon through Wednesday.
- As tropical moisture moves into the state indirectly associated with 93L, rain chances will be high with localized heavy rainfall and some minor flood concerns in urban areas along the Gulf Coast Thursday-Saturday.

The next full briefing packet will be issued Tuesday morning, with a brief update being sent out late this afternoon. For the latest information on the tropics, please visit the National Hurricane Center website at www.hurricanes.gov. For more details on daily weather conditions across the state, wildfire/weather briefings are being uploaded to WebEOC Info Message #1116 each morning.



TROPICAL UPDATE



Created by:

Michael Spagnolo, Deputy State Meteorologist

Michael.Spagnolo@em.myflorida.com

State Meteorological Support Unit

Florida Division of Emergency Management

Users wishing to subscribe (approval pending) to this distribution list, register at:

https://public.govdelivery.com/accounts/FLDEM/subscriber/new?topic_id=SERT_Met_Tropics.

Other reports available for subscription are available at:

<https://public.govdelivery.com/accounts/FLDEM/subscriber/new?preferences=true>