



TROPICAL UPDATE



11:00 AM EDT

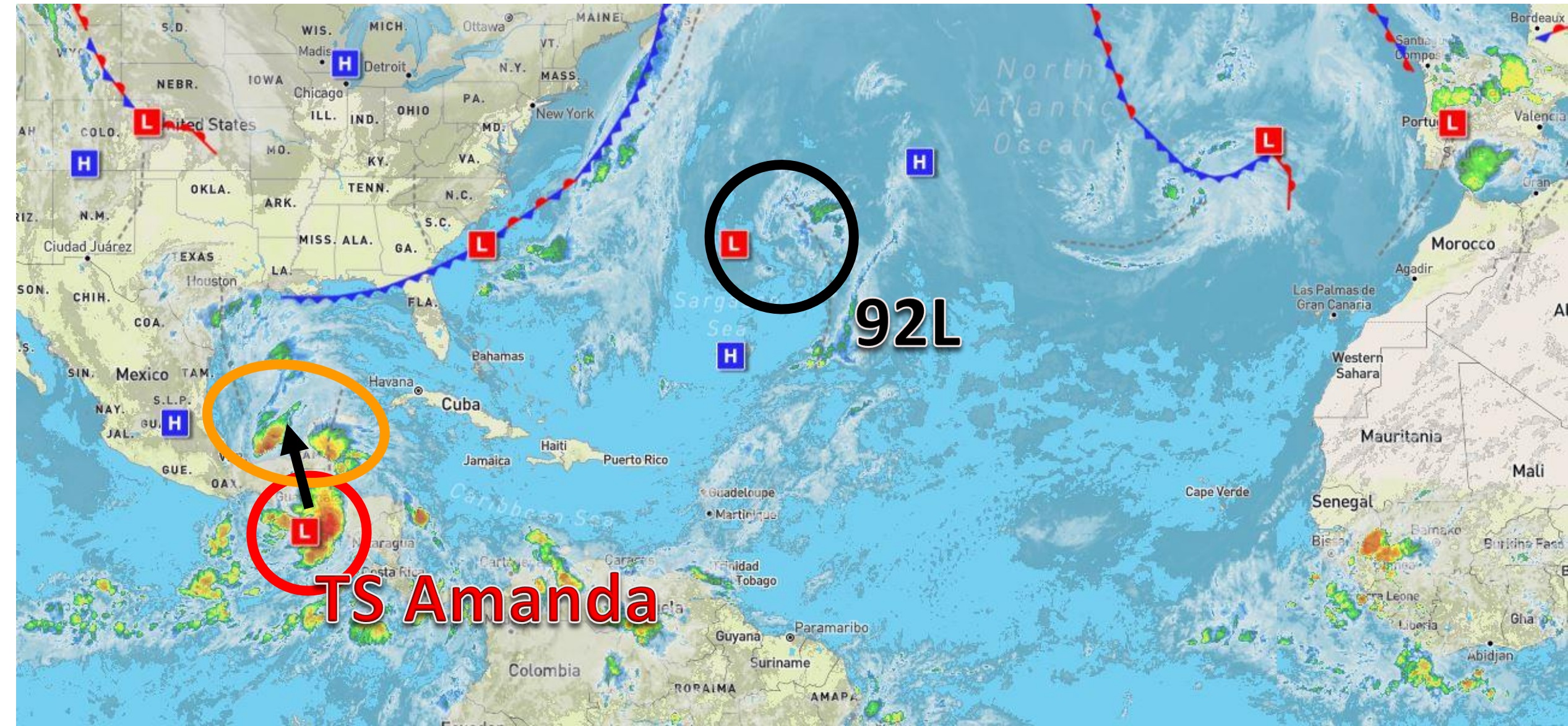
Sunday, May 31, 2020

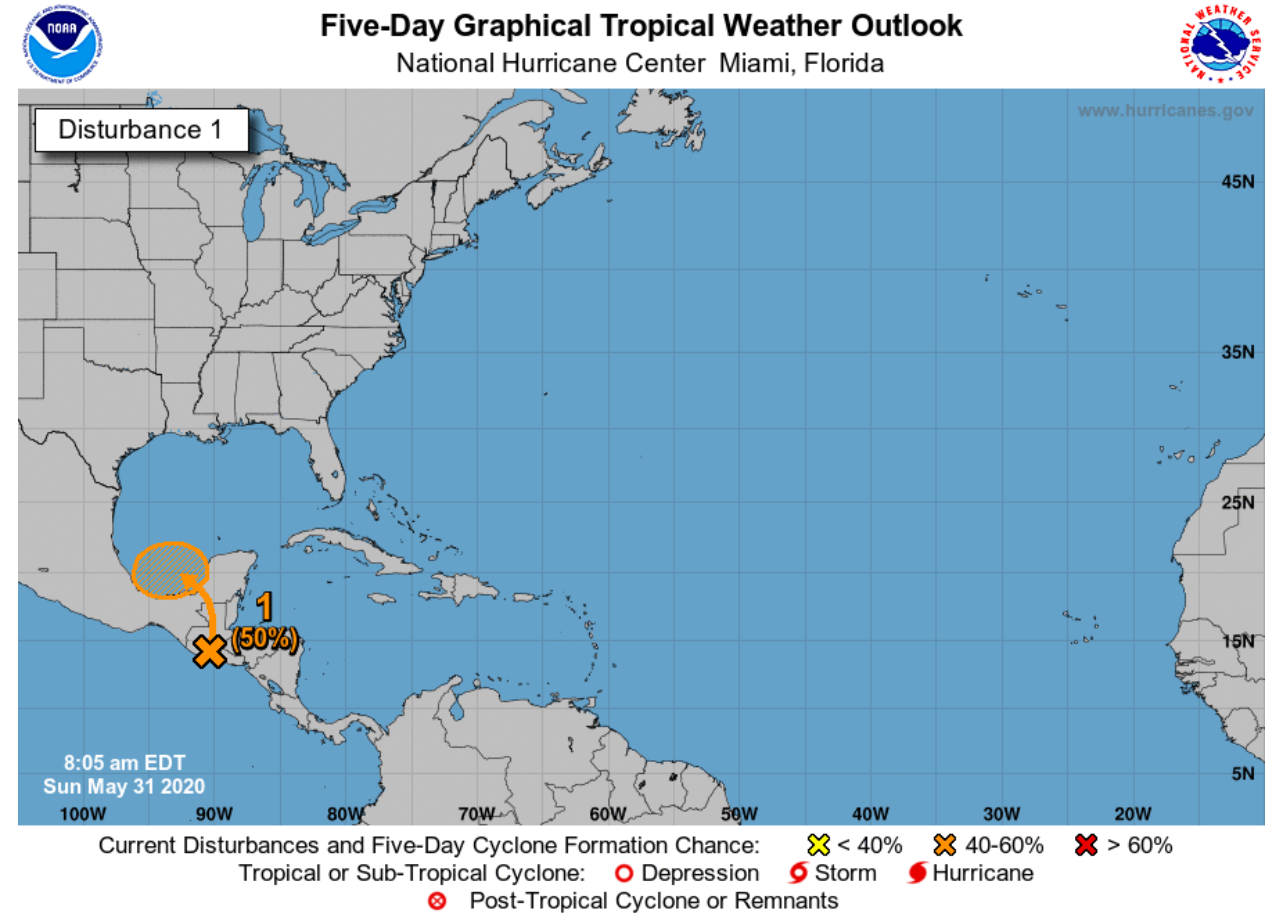
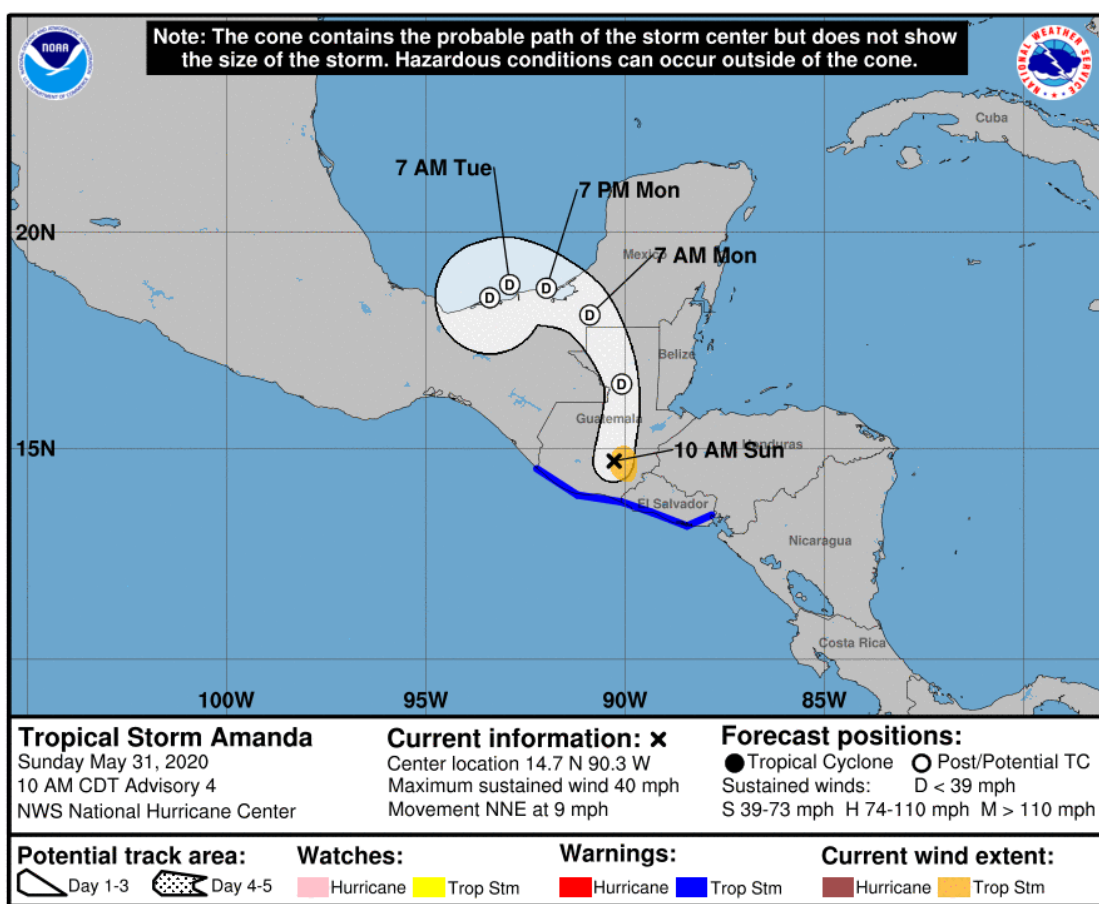
Southwestern Gulf of Mexico (50%)
(East Pacific Tropical Storm Amanda)

This update is intended for government and emergency response officials, and is provided for informational and situational awareness purposes only. Forecast conditions are subject to change based on a variety of environmental factors. For additional information, or for any life safety concerns with an active weather event please contact your County Emergency Management or Public Safety Office, local National Weather Service forecast office, or visit the National Hurricane Center website at www.hurricanes.gov.

Atlantic Basin Satellite Image

Chance of development: — None — Low — Medium — High





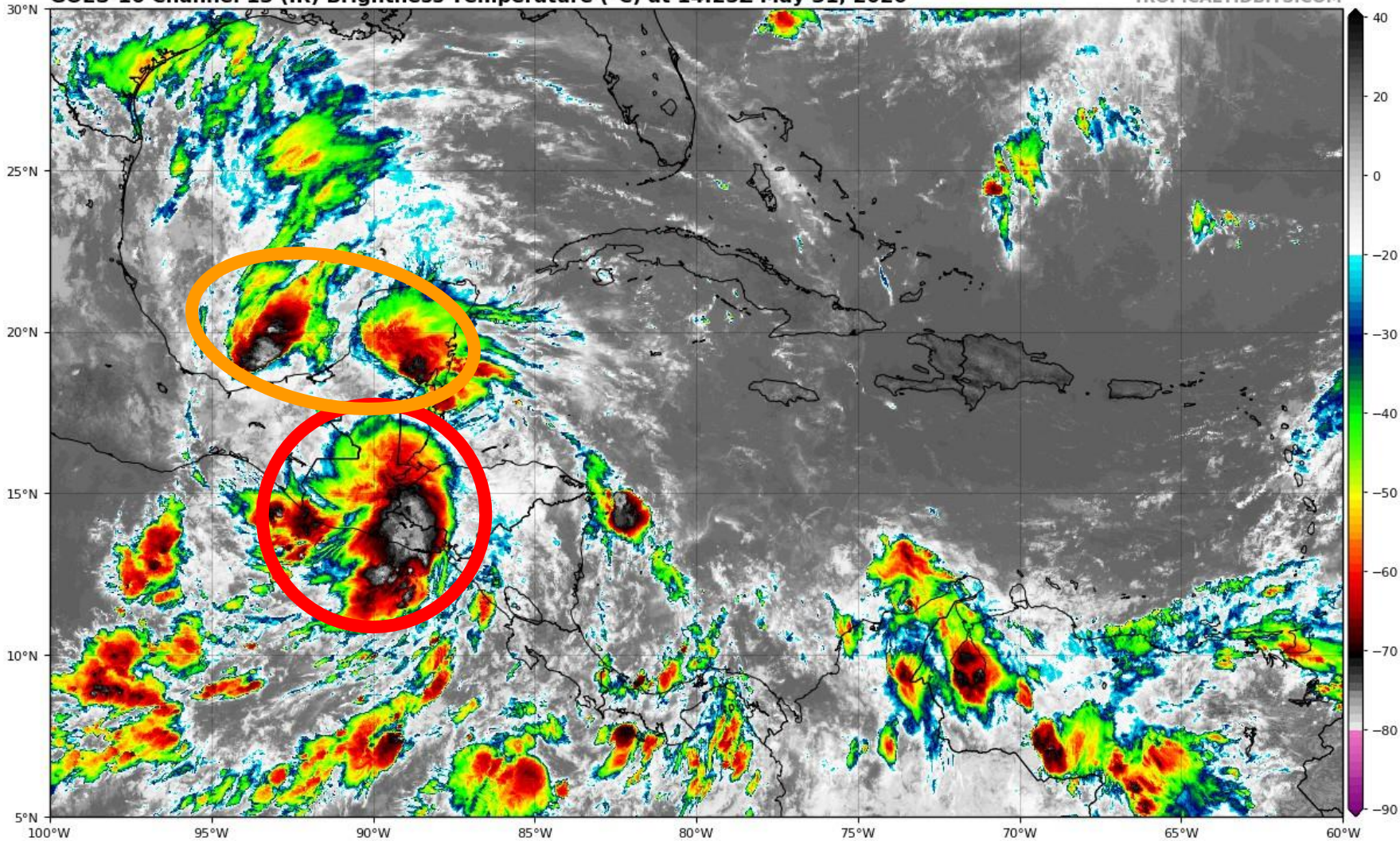
East Pacific Tropical Storm Amanda / Southwestern Gulf of Mexico Low: Eastern Pacific Tropical Storm Amanda, centered inland over southeastern Guatemala, is forecast to weaken into a remnant low or dissipate over Guatemala or southeastern Mexico by tonight. However, the remnants of Amanda are expected to move northwestward within a broader area of disturbed weather, possibly emerging over the southeastern Bay of Campeche on Monday. If the remnants move back over water, environmental conditions appear conducive to support some redevelopment of the system while it moves little through the middle of this week.

***Formation chance through 48 hours...medium...40 percent.**

***Formation chance through 5 days...medium...50 percent.**

GOES-16 Channel 13 (IR) Brightness Temperature (°C) at 14:25Z May 31, 2020

TROPICALTIDBITS.COM



Satellite Imagery: Tropical Storm Amanda

Amanda has moved inland over Guatemala and is now starting to weaken (red circle). There are two other areas of thunderstorms in the region- one over the Yucatan Peninsula and one over the Bay of Campeche in the southwestern Gulf of Mexico (orange circle).

Redevelopment of Amanda is possible in the southwestern Gulf of Mexico over the next couple of days.

Steering Currents

Color denotes the movement speed through the atmosphere and thin white lines denote direction. Tightly clustered white lines represent faster movement as well.

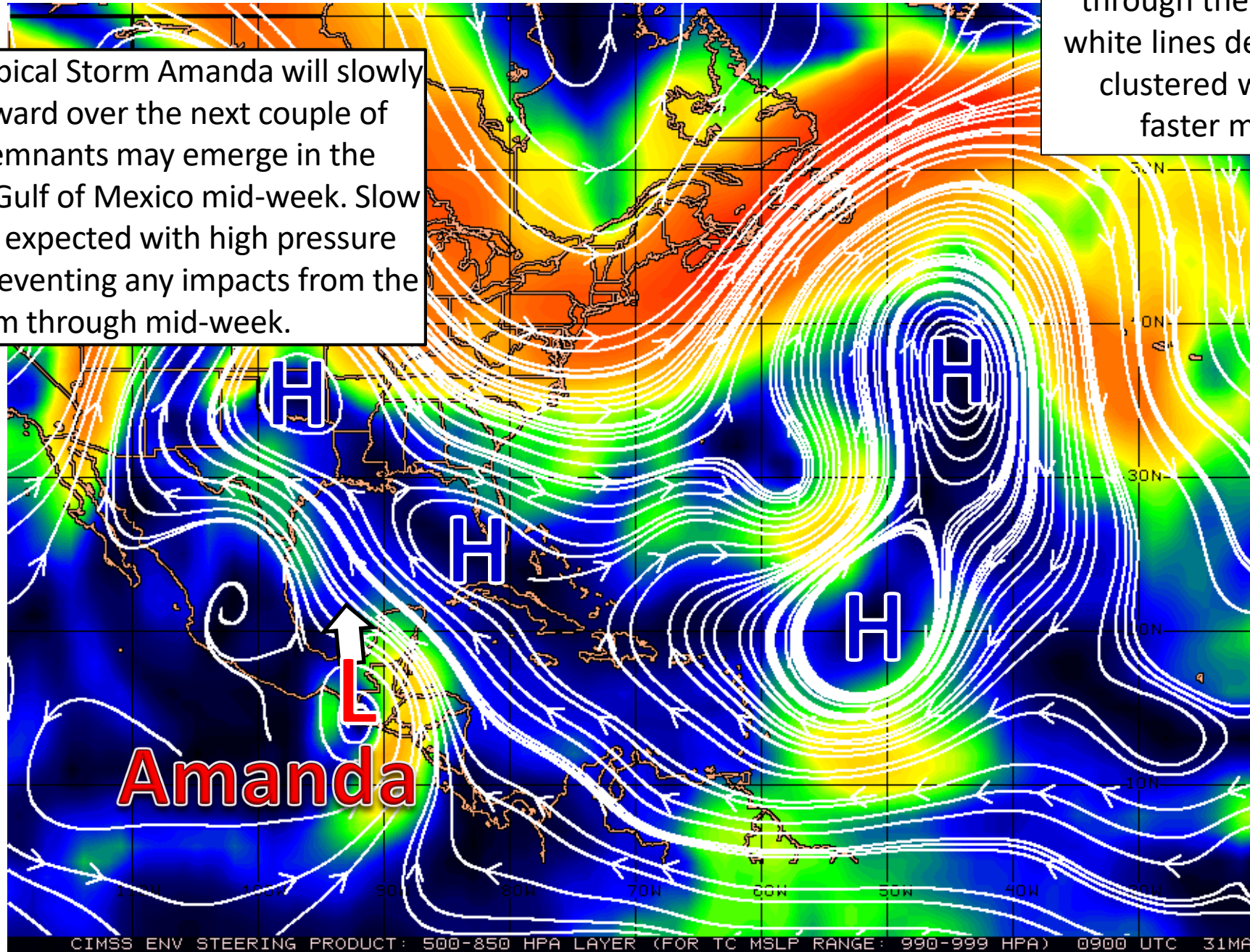
Fast Moving Storm

Fast Moving Storm

Typical Moving Storm

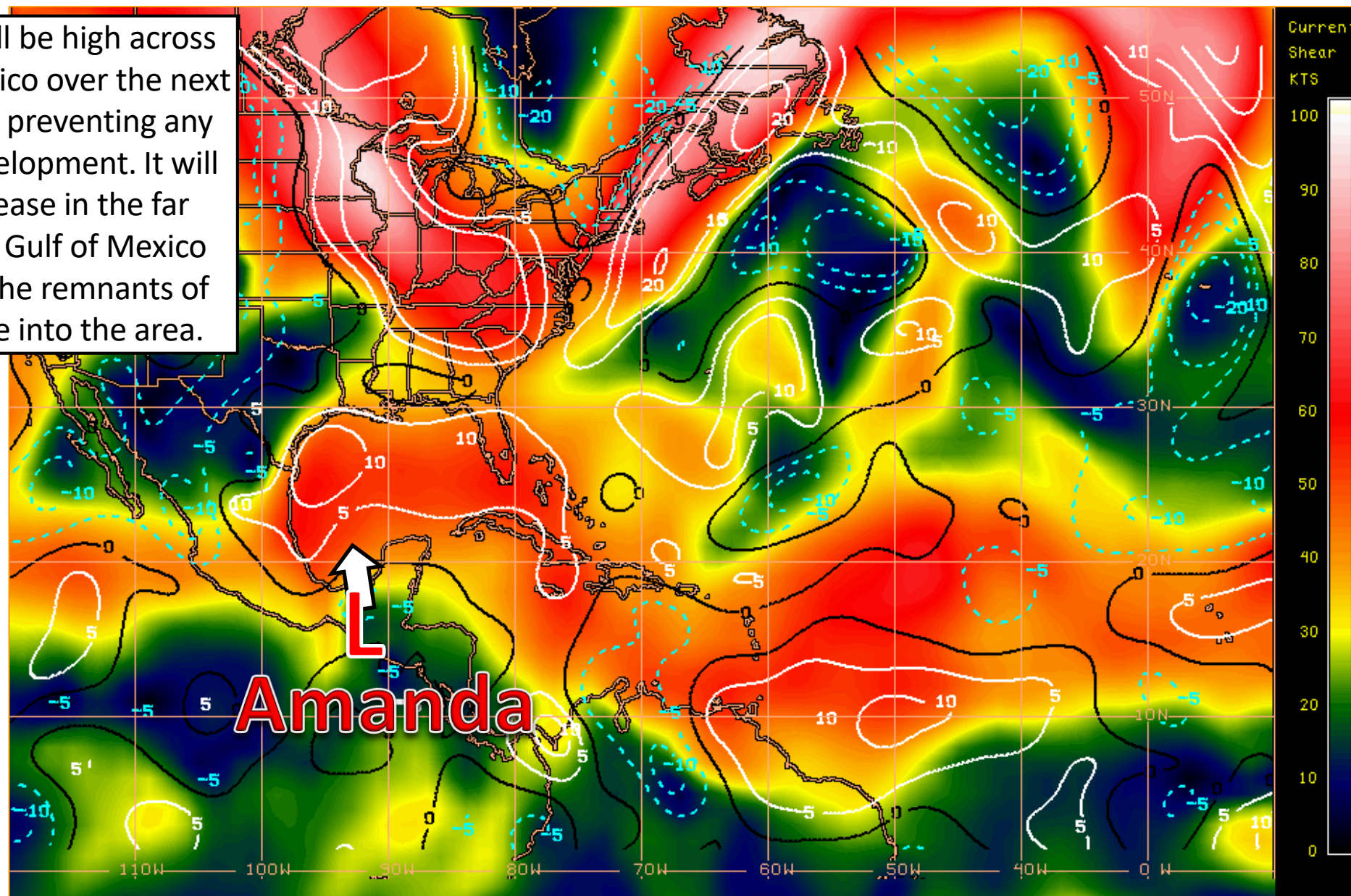
Slow Moving Storm

East Pacific Tropical Storm Amanda will slowly move northward over the next couple of days. The remnants may emerge in the southwestern Gulf of Mexico mid-week. Slow movement is expected with high pressure over Florida preventing any impacts from the system through mid-week.



Wind Shear (shaded) and Wind Shear Tendencies (contoured)

Wind shear will be high across the Gulf of Mexico over the next couple of days preventing any significant development. It will start to decrease in the far southwestern Gulf of Mexico mid-week as the remnants of Amanda move into the area.



HIGH Shear
(Unfavorable)

HIGH Shear
(Unfavorable)

MODERATE
Shear
(Neutral)

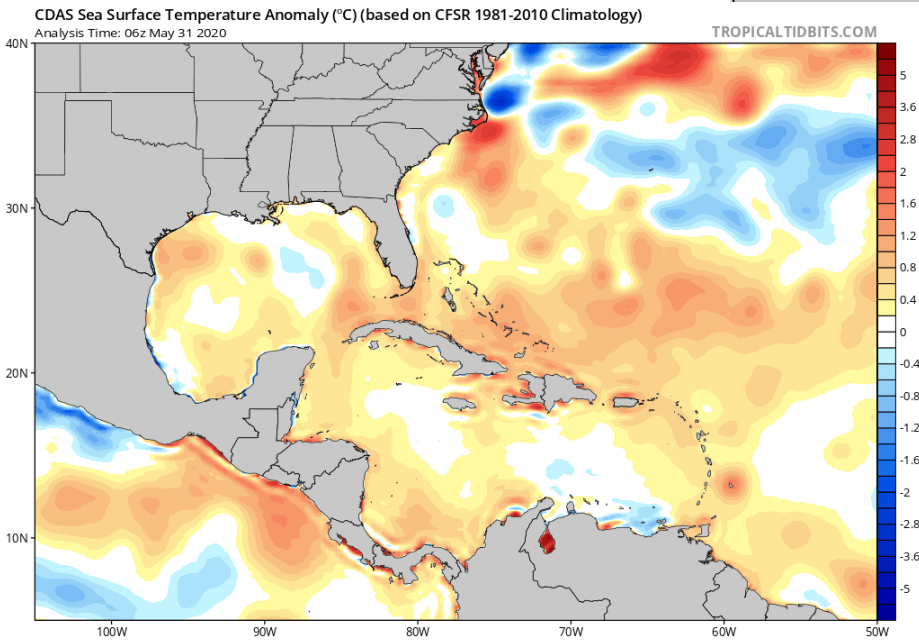
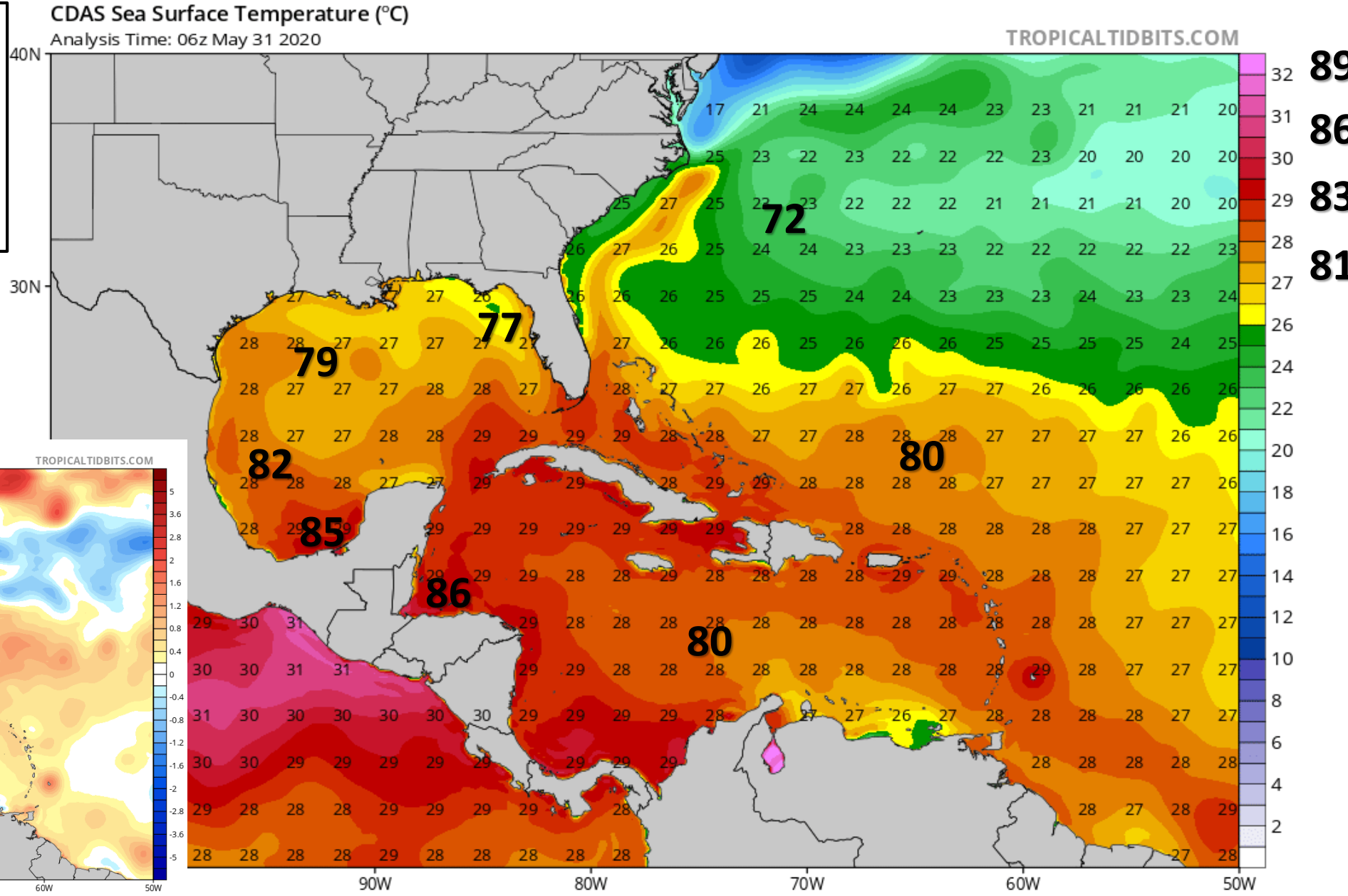
LOW Shear
(Favorable)

Shear Tendency (KTS) Over Past 24 Hours: Increasing — Decreasing ----

GOES-FAST 24 HOUR WIND SHEAR TENDENCY PRODUCT 1200 UTC 31 MAY 2004 UN-CIMSS McTRPS

Western Atlantic Sea Surface Temperatures and Anomalies

Temperatures continue to warm across the Gulf of Mexico and Caribbean and remain a degree or so above normal. Water temperatures support tropical development.

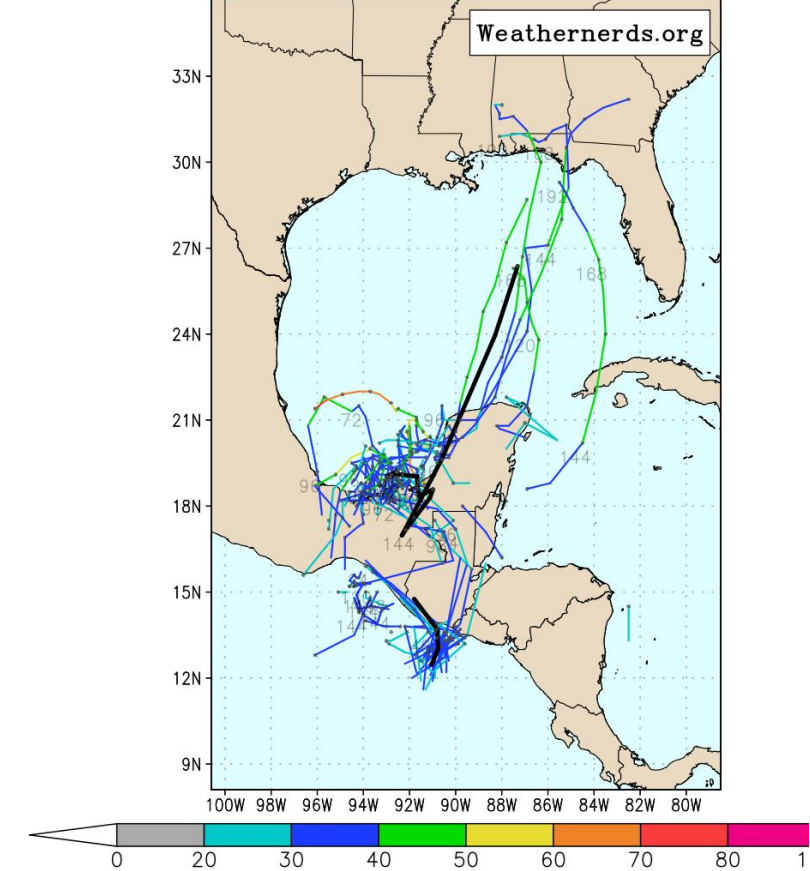
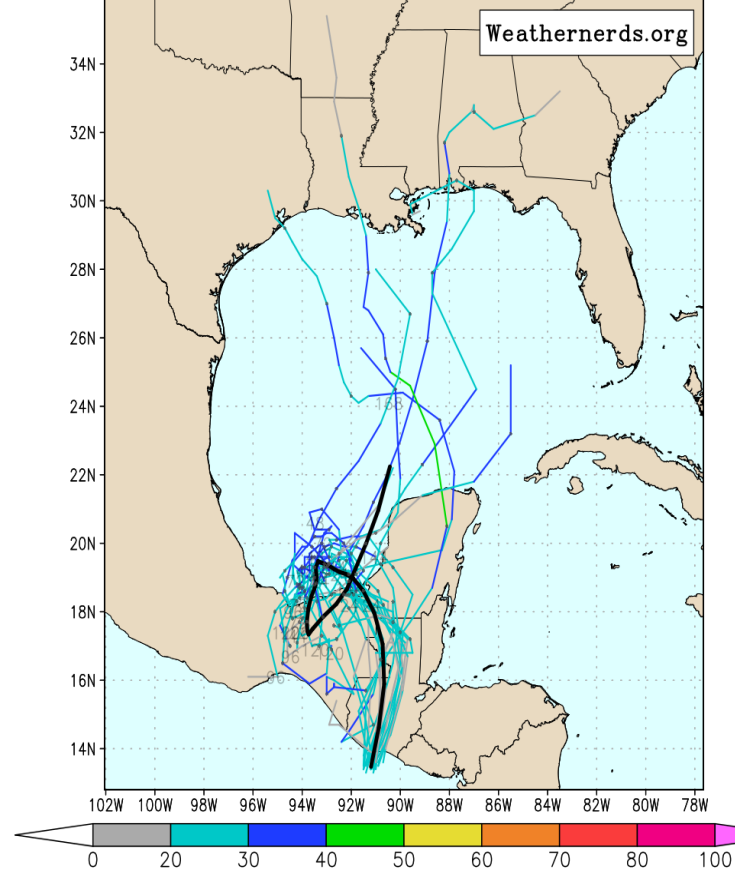
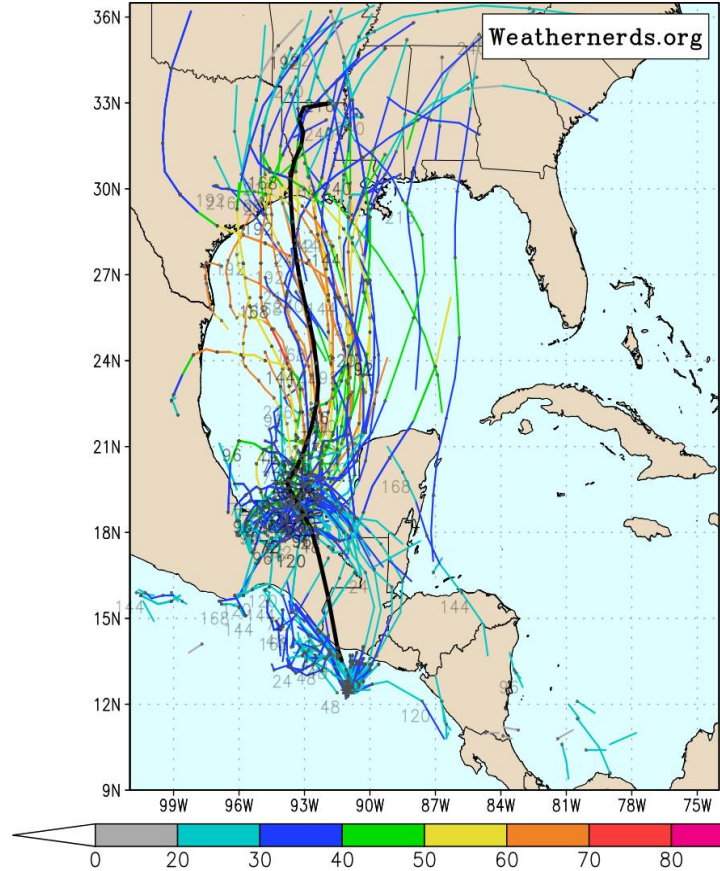


Model Ensemble Guidance (Tracks)

ECMWF Ensemble, init: 2020053100, EP02 Amanda

ccGFS Ensemble, init: 2020053106, EP02 Amanda

color = UKMET Ensemble, init: 2020053100, EP02 Amanda



If Tropical Storm Amanda regenerates once it moves into the southwestern Gulf of Mexico mid-week, it may be pulled to the north towards the US Gulf Coast. Any details past that (such as strength or exact locations) are not known. Impacts to Florida are not expected through mid-week, but the system should be monitored as we head into the first weekend of June.

Summary

East Pacific Tropical Storm Amanda / Southwestern Gulf of Mexico Low

- Tropical Storm Amanda developed in the eastern Pacific and made landfall in Guatemala overnight.
- Amanda or the remnants will move northward towards the Bay of Campeche in the southwestern Gulf of Mexico.
- Redevelopment is then possible mid-week as the system meanders over the warm waters of the southwest Gulf.
- If the system does redevelop, it may eventually move northwards across the Gulf of Mexico later this week into the first weekend of June.
- Until the system redevelops (IF it even does), any details on the track or strength of the system remain uncertain.

Florida Outlook:

- This system will have no impact to Florida through mid-week, but should continue to be monitored.
- Typical summertime thunderstorms are expected across the state each afternoon through Wednesday. Significant or widespread severe weather or flash flooding is not expected.

The next briefing packet will be issued Monday morning. For the latest information on the tropics, please visit the National Hurricane Center website at www.hurricanes.gov. For more details on daily weather conditions across the state, wildfire/weather briefings are being uploaded to WebEOC Info Message #1116 each morning.



TROPICAL UPDATE



Created by:

Michael Spagnolo, Deputy State Meteorologist

Michael.Spagnolo@em.myflorida.com

State Meteorological Support Unit

Florida Division of Emergency Management

Users wishing to subscribe (approval pending) to this distribution list, register at:

https://public.govdelivery.com/accounts/FLDEM/subscriber/new?topic_id=SERT_Met_Tropics.

Other reports available for subscription are available at:

<https://public.govdelivery.com/accounts/FLDEM/subscriber/new?preferences=true>