



# TROPICAL UPDATE



5:00 PM EDT

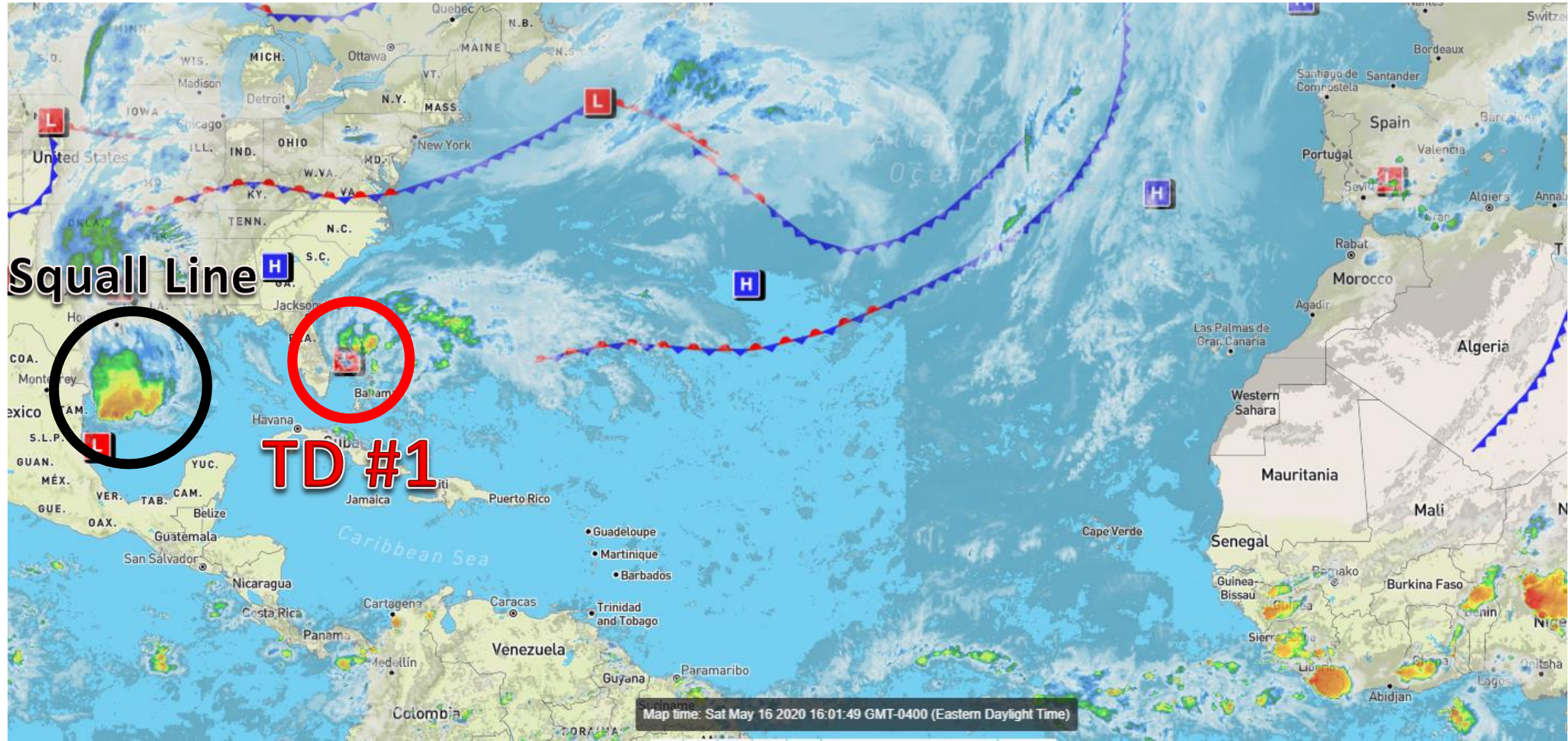
Saturday, May 16, 2020

Tropical Depression #1

This update is intended for government and emergency response officials, and is provided for informational and situational awareness purposes only. Forecast conditions are subject to change based on a variety of environmental factors. For additional information, or for any life safety concerns with an active weather event please contact your County Emergency Management or Public Safety Office, local National Weather Service forecast office, or visit the National Hurricane Center website at [www.hurricanes.gov](http://www.hurricanes.gov).

# Atlantic Basin Satellite Image

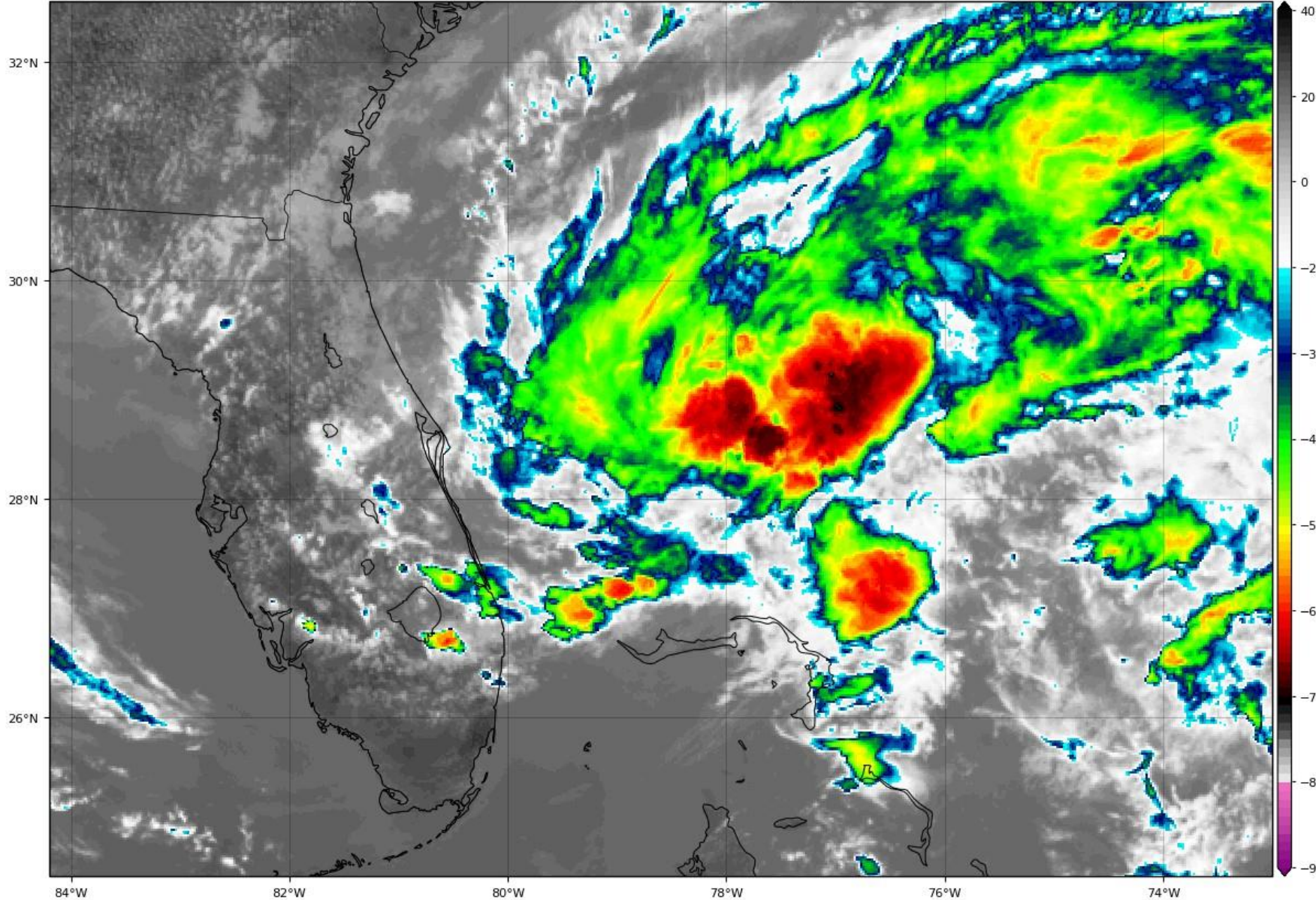
Chance of development: — None — Low — Medium — High





GOES-16 Channel 13 (IR) Brightness Temperature (°C) at 20:17Z May 16, 2020

TROPICALTIDBITS.COM

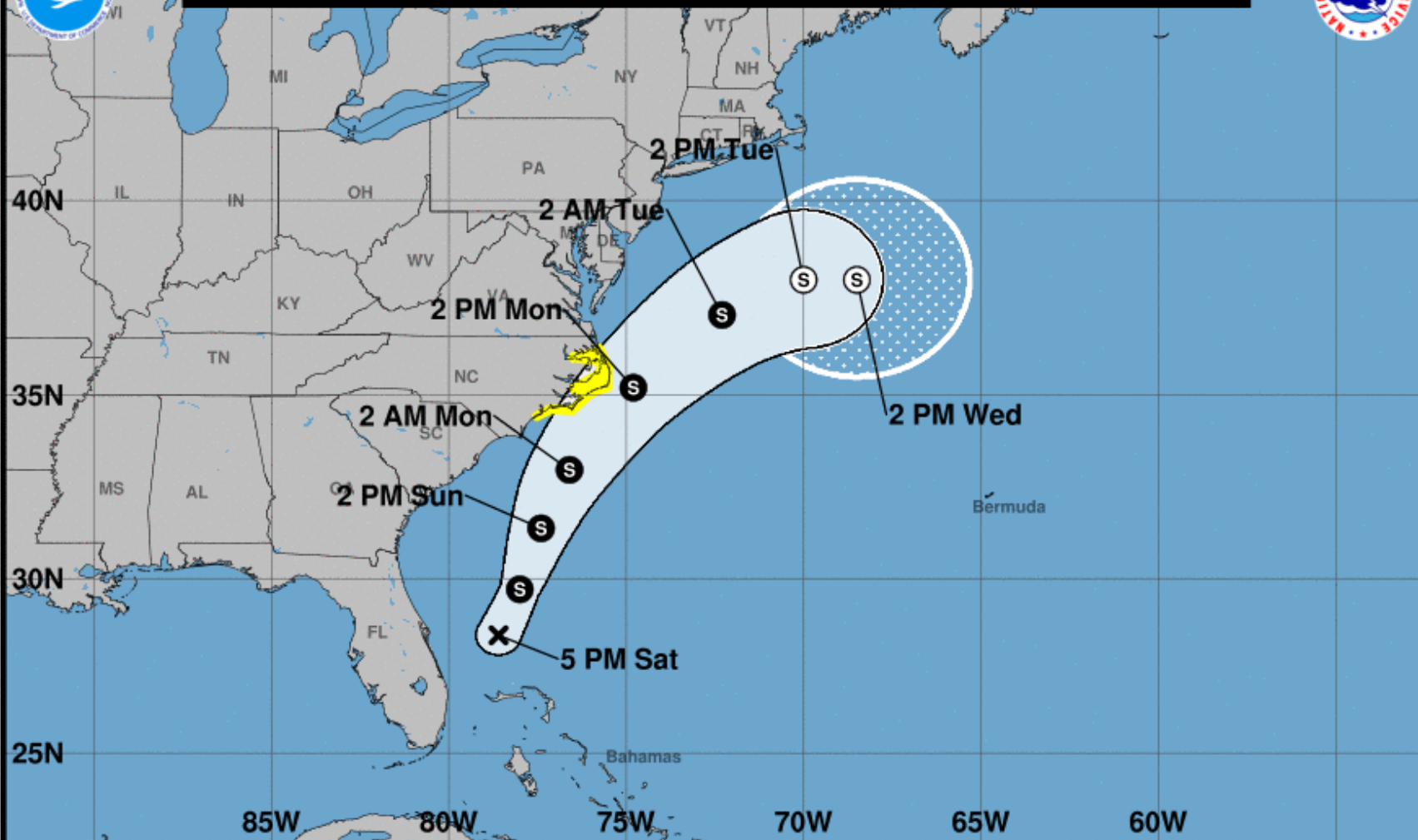


## Infrared Satellite: Tropical Depression #1

The lower wind shear has allowed the system to become better organized. It has also detached from its old frontal boundary, allowing it to become a tropical system. The Hurricane Hunters also found a well-defined center during their investigation this afternoon. Thus, the National Hurricane Center has now classified the system as a tropical depression.



Note: The cone contains the probable path of the storm center but does not show the size of the storm. Hazardous conditions can occur outside of the cone.

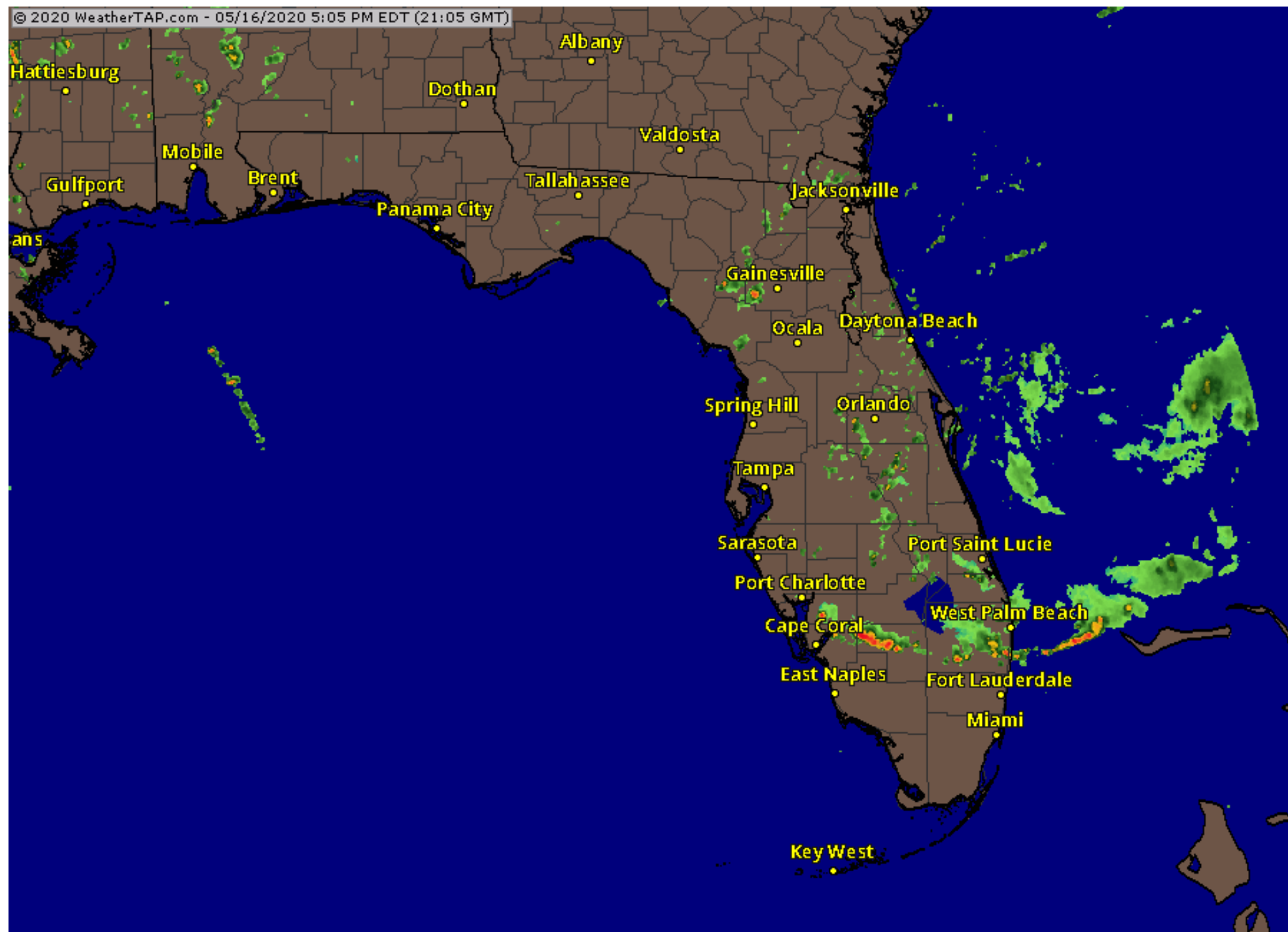


## Projected Path: Tropical Depression #1

The center of Tropical Depression #1 is located about 125 miles east of Melbourne, moving north-northeast at 13 mph. Maximum sustained winds are currently 35 mph. Some strengthening is forecast, and this system will likely become a tropical storm on Sunday. The first name on the list is Arthur. Tropical Storm Watches have been issued for the Outer Banks of North Carolina.

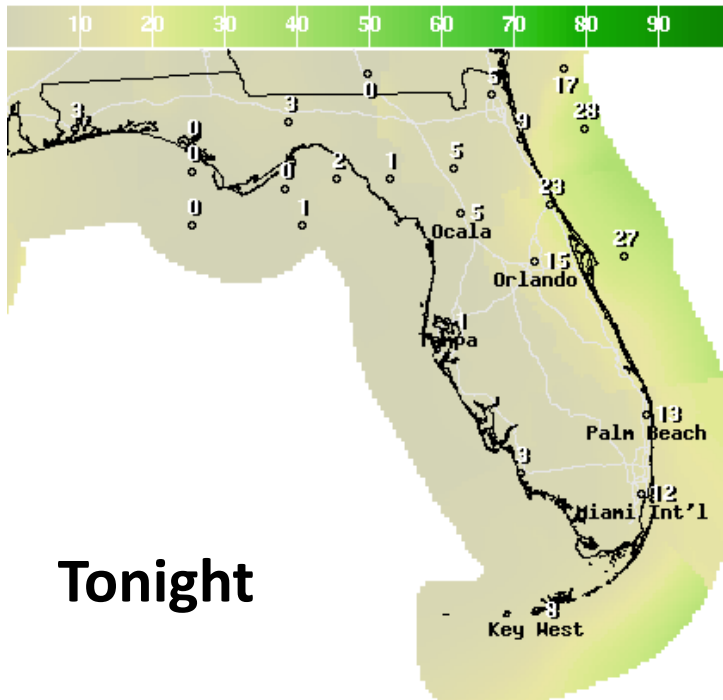
<b>Tropical Depression One</b> Saturday May 16, 2020 5 PM EDT Advisory 1 NWS National Hurricane Center	<b>Current information: x</b> Center location 28.4 N 78.6 W Maximum sustained wind 35 mph Movement NNE at 13 mph	<b>Forecast positions:</b> ● Tropical Cyclone    ○ Post/Potential TC Sustained winds:    D < 39 mph S 39-73 mph    H 74-110 mph    M > 110 mph	
<b>Potential track area:</b> Day 1-3    Day 4-5	<b>Watches:</b> Hurricane    Trop Stm	<b>Warnings:</b> Hurricane    Trop Stm	<b>Current wind extent:</b> Hurricane    Trop Stm





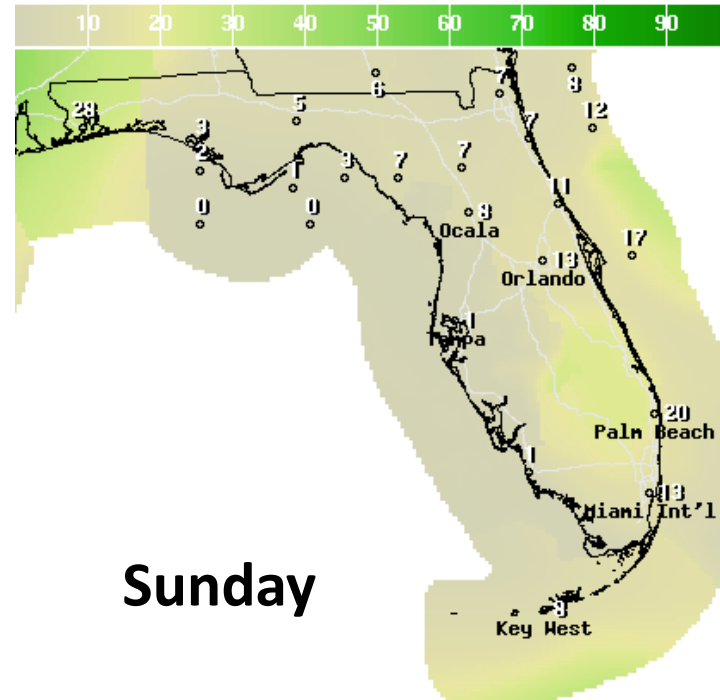
**Current Radar**  
**as of 5:05 PM**  
**EDT**

# Rain Chances Tonight & Sunday



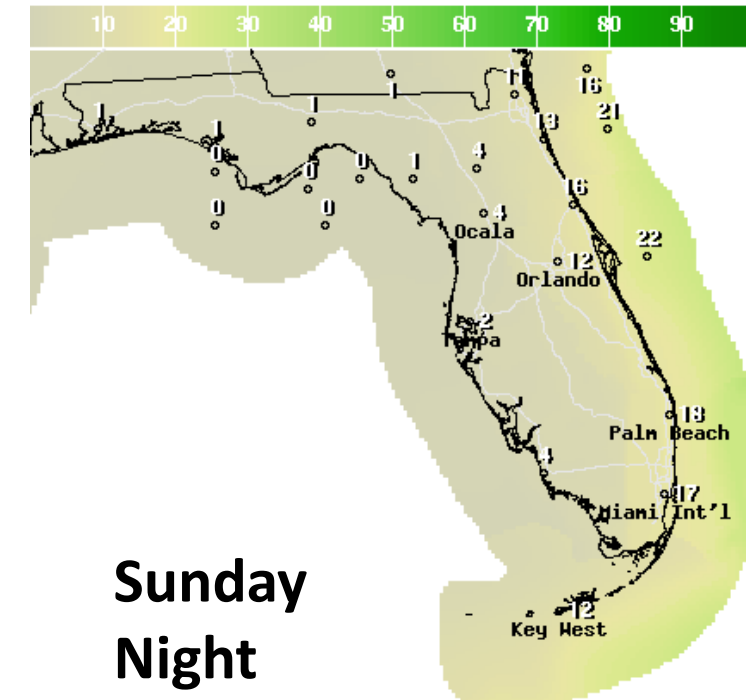
**Tonight**

12Hr Prob.Precip(%) Ending Sun May 17 2020 8AM EDT  
(Sun May 17 2020 12Z)  
National Digital Forecast Database  
19z issuance Graphic created-May 16 3:29PM EDT



**Sunday**

12Hr Prob.Precip(%) Ending Sun May 17 2020 8PM EDT  
(Mon May 18 2020 00Z)  
National Digital Forecast Database  
18z issuance Graphic created-May 16 2:43PM EDT

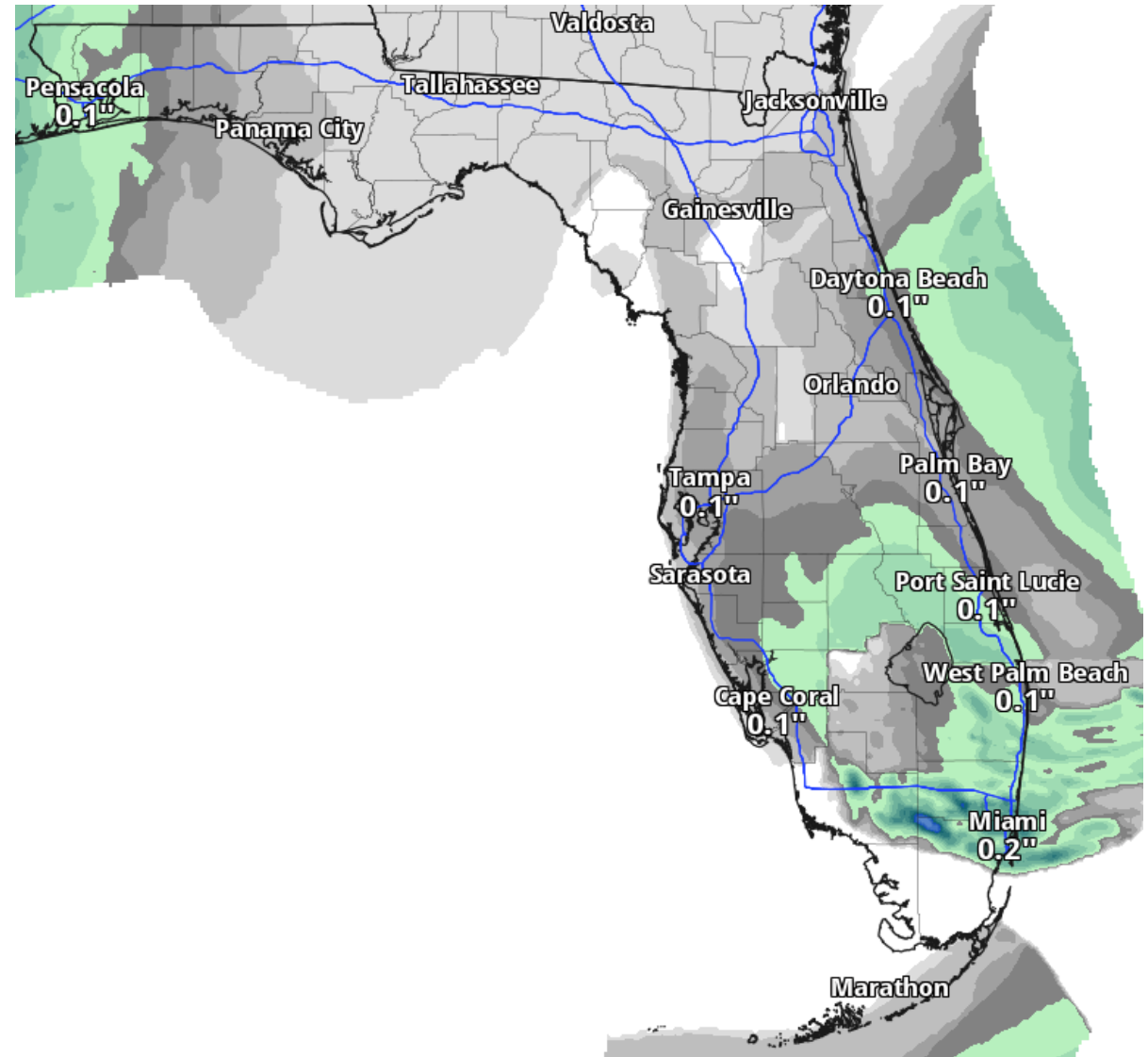
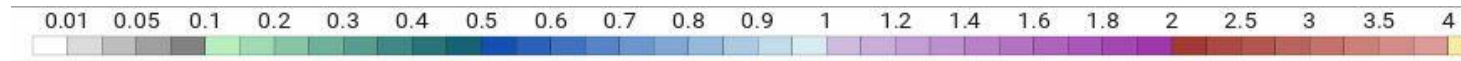


**Sunday Night**

12Hr Prob.Precip(%) Ending Sun May 17 2020 8AM EDT  
(Sun May 17 2020 12Z)  
National Digital Forecast Database  
20z issuance Graphic created-May 15 4:19PM EDT

Scattered showers and thunderstorms will gradually decrease through the evening with only isolated showers and thunderstorms on Sunday. Widespread strong to severe thunderstorms are not expected. Some gusty winds, locally heavy downpours, and frequent lightning may accompany the stronger storms.

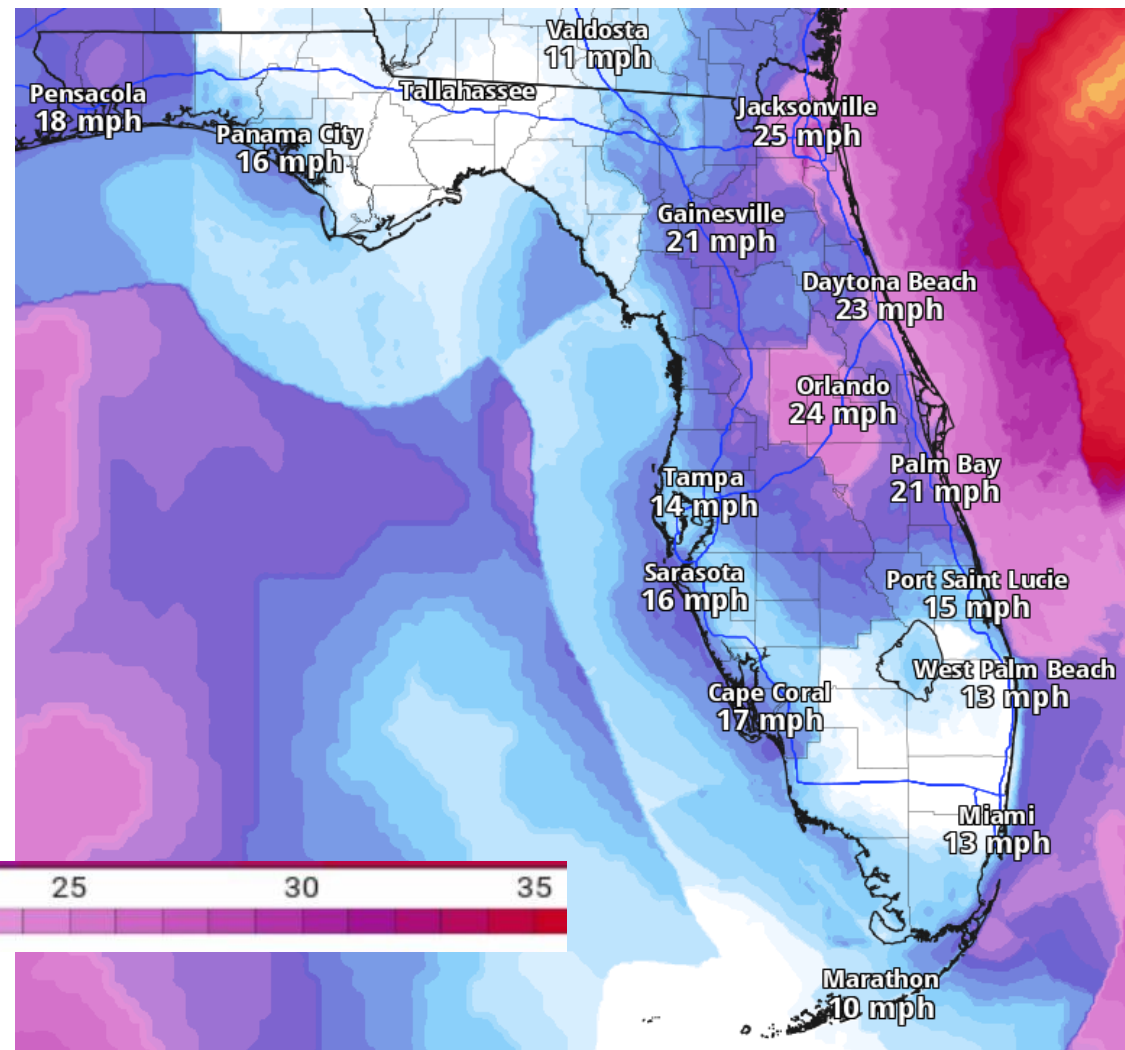
# Forecast Rainfall Totals Next 48 Hours



Some locally heavy downpours are possible in the stronger storms, but rainfall accumulations should remain light.

Significant, wetting rainfall is not expected in the Panhandle for the next 7 days.

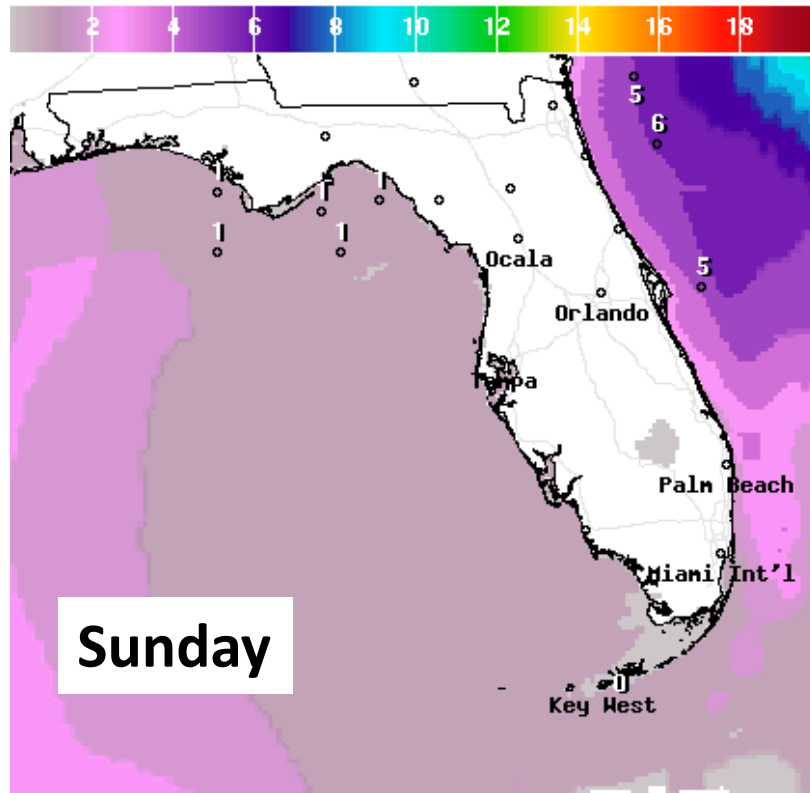
# Wind Gusts Through Sunday Afternoon



Wind gusts of 20-25 mph are still possible across the Peninsula through this evening, but winds should generally subside tonight into Sunday.



# Wave Heights This Weekend



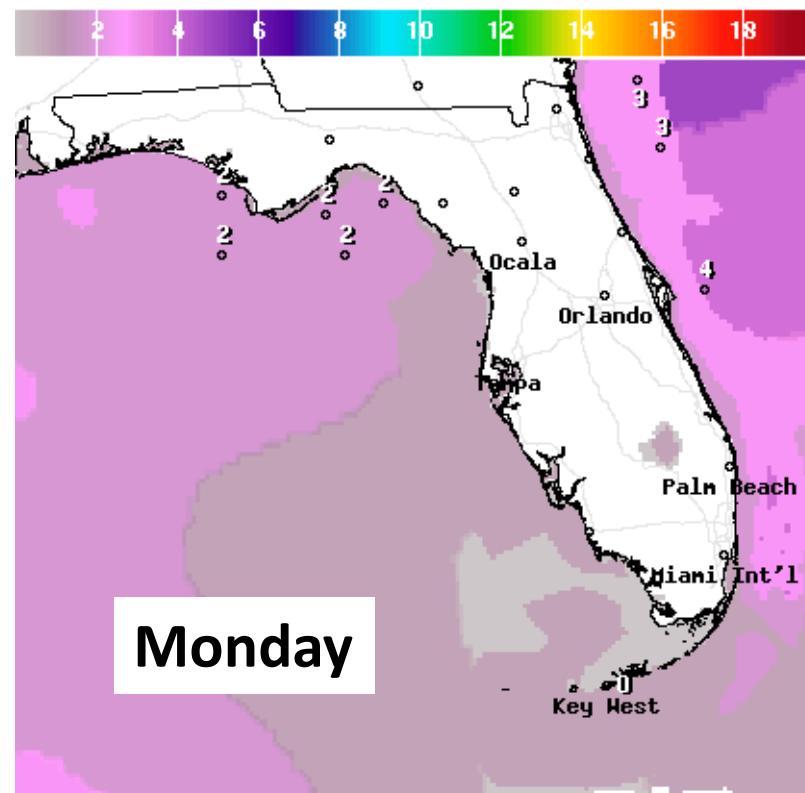
Wave Height(ft) Ending Sun May 17 2020 8PM EDT  
(Mon May 18 2020 00Z)



National Digital Forecast Database

19z issuance

Graphic created-May 16 3:24PM EDT



Wave Height(ft) Ending Mon May 18 2020 8PM EDT  
(Tue May 19 2020 00Z)



National Digital Forecast Database

19z issuance

Graphic created-May 16 3:25PM EDT



Waves will remain high this weekend as the system becomes better organized offshore. This combined with breezy easterly winds will result in a **high rip current risk for Atlantic beaches through Sunday**. Conditions improve starting early next week.

# Summary

## **Tropical Depression #1**

- The Hurricane Hunters found that the system has become sufficiently organized to be classified as a tropical depression.
- Tropical Depression #1 is located about 125 miles east of Melbourne, FL, moving north-northeast at 13 mph.
- Maximum sustained winds are near 35 mph, and strengthening is forecast. TD #1 will likely become a tropical storm on Sunday.
- Tropical Storm Watches have been issued for the Outer Banks of North Carolina.
- When this system becomes a tropical storm, the first name on the list is Arthur.

## **Florida Outlook:**

- Scattered thunderstorms are possible over the Peninsula through this evening. Some storms could contain gusty winds, frequent lightning, and locally heavy downpours.
- An additional 0.5" of rainfall is possible along the East Coast, though higher amounts may occur in thunderstorms.
- Winds could gust up to 30 mph outside of thunderstorms.
- The rip current risk will likely remain high at Atlantic beaches into Sunday.

The next tropics packet will be issued Sunday morning. For the latest information on the tropics, please visit the National Hurricane Center website at [www.hurricanes.gov](http://www.hurricanes.gov).



# TROPICAL UPDATE



Created by:

Cameron Young, Assistant State Meteorologist

[Cameron.Young@em.myflorida.com](mailto:Cameron.Young@em.myflorida.com)

State Meteorological Support Unit

Florida Division of Emergency Management

Users wishing to subscribe (approval pending) to this distribution list, register at:

[https://public.govdelivery.com/accounts/FLDEM/subscriber/new?topic\\_id=SERT\\_Met\\_Tropics](https://public.govdelivery.com/accounts/FLDEM/subscriber/new?topic_id=SERT_Met_Tropics).

Other reports available for subscription are available at:

<https://public.govdelivery.com/accounts/FLDEM/subscriber/new?preferences=true>