



TROPICAL UPDATE



8 AM EDT

Saturday, October 19, 2019

Tropical Storm Nestor

This update is intended for government and emergency response officials, and is provided for informational and situational awareness purposes only. Forecast conditions are subject to change based on a variety of environmental factors. For additional information, or for any life safety concerns with an active weather event please contact your County Emergency Management or Public Safety Office, local National Weather Service forecast office, or visit the National Hurricane Center website at www.hurricanes.gov.

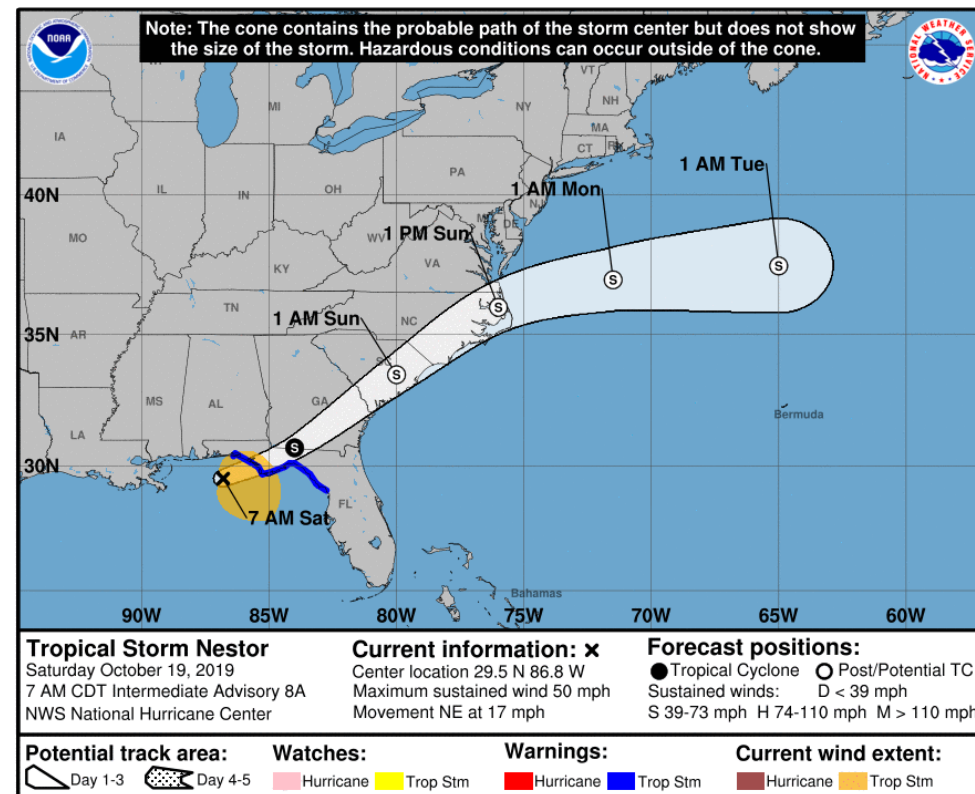
Tropical Storm Nestor

Saturday, October 19, 8 AM ET

	MINIMAL	Low	MODERATE	HIGH	EXTREME
 WINDS					
 STORM SURGE					
 FLASH FLOODING					
 TORNADOES					

	Low	MODERATE	HIGH
 RIP CURRENTS			

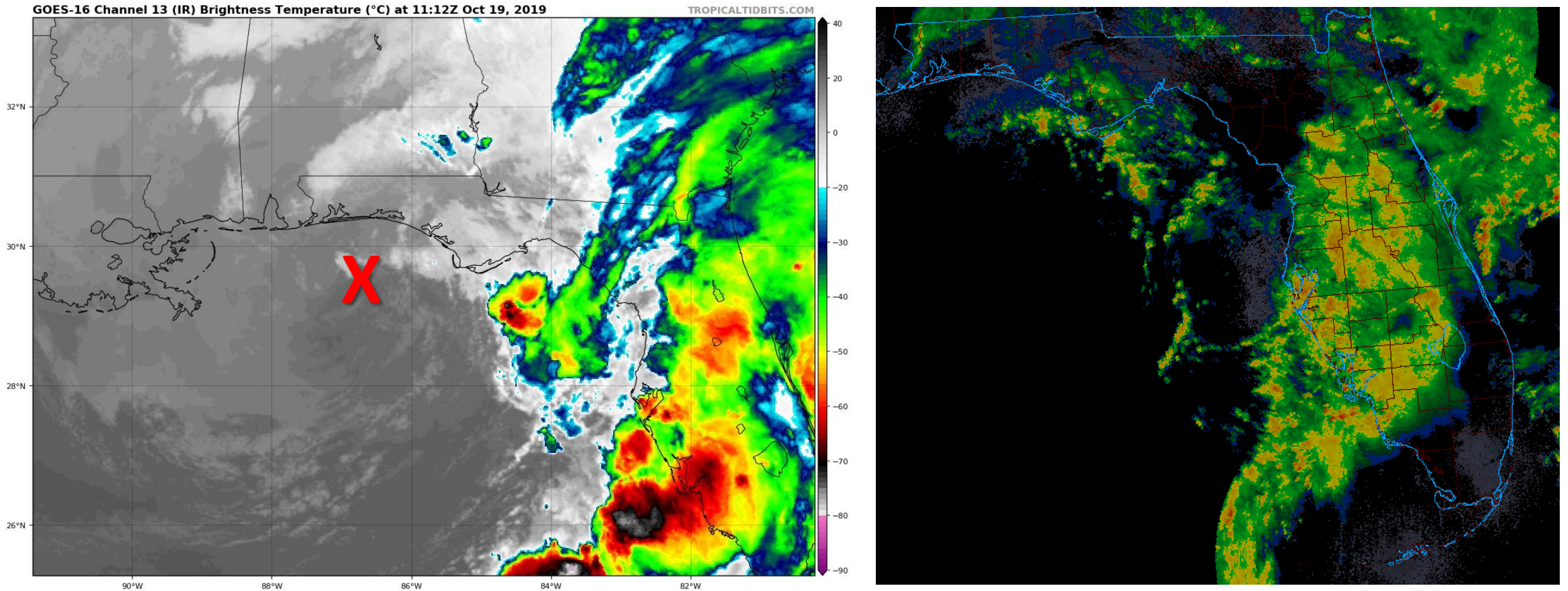
National Hurricane Center Map



Changes Since Last Night:

- Tropical Storm Warnings cancelled for the western Panhandle.
- Tornado Watch for much of Northeast and Central Florida.
- Coastal flooding peaking now as high tide approaches with conditions improving by the afternoon.

Tropical Storm Nestor Satellite Image (left) and Radar (right)



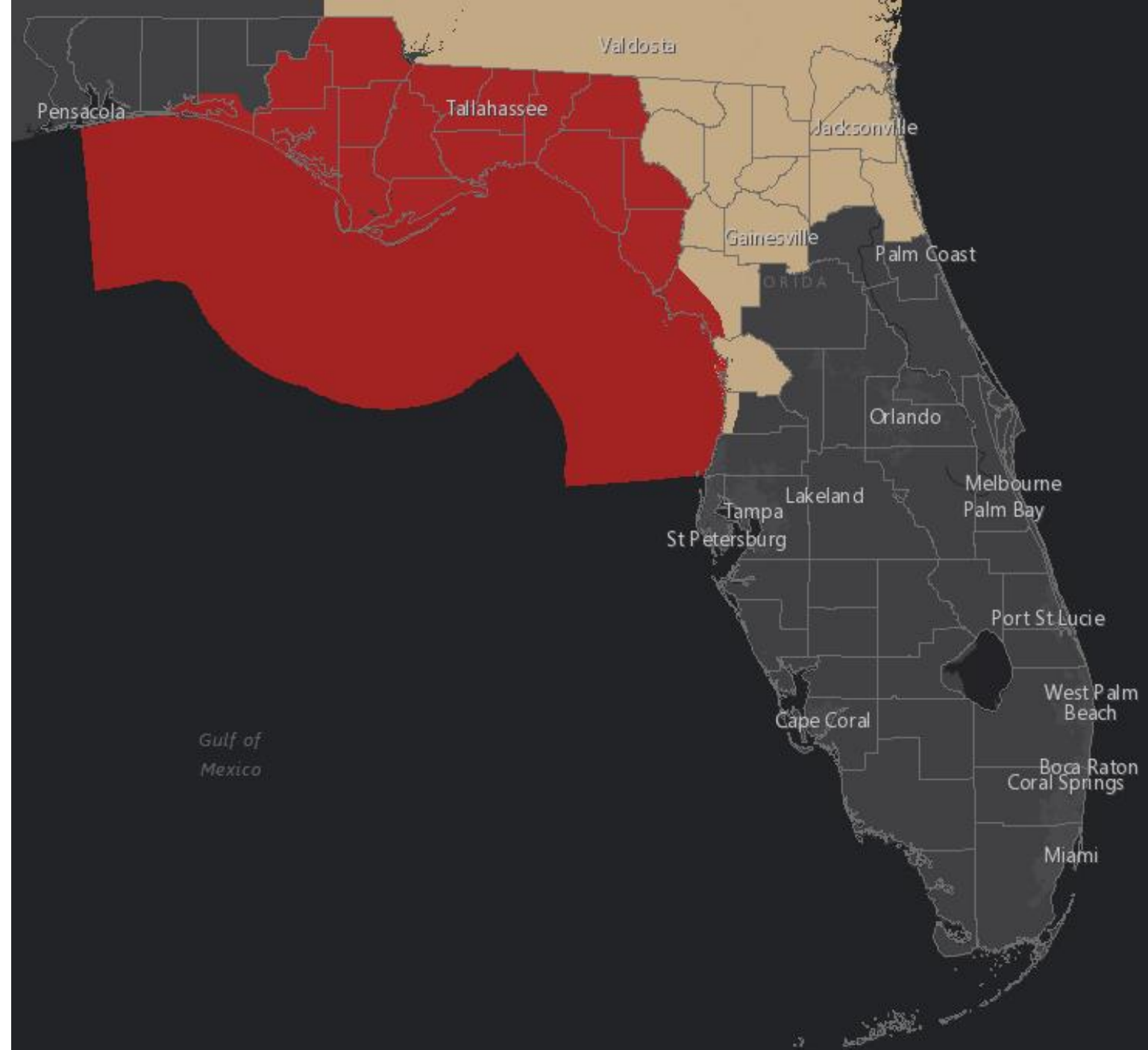
Tropical Storm Nestor remains very disorganized as a tropical system. The center (red X) will move onshore in the Panhandle later this morning while most of the rain remains well to the east of the center over the Peninsula. Only scattered showers remain near the center. Nestor is quickly losing its tropical characteristics and is expected to become post-tropical

Tropical Storm Warning

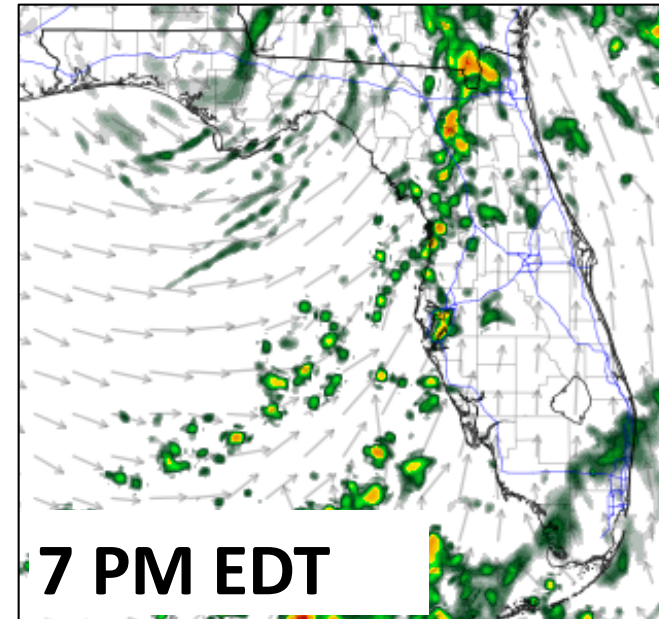
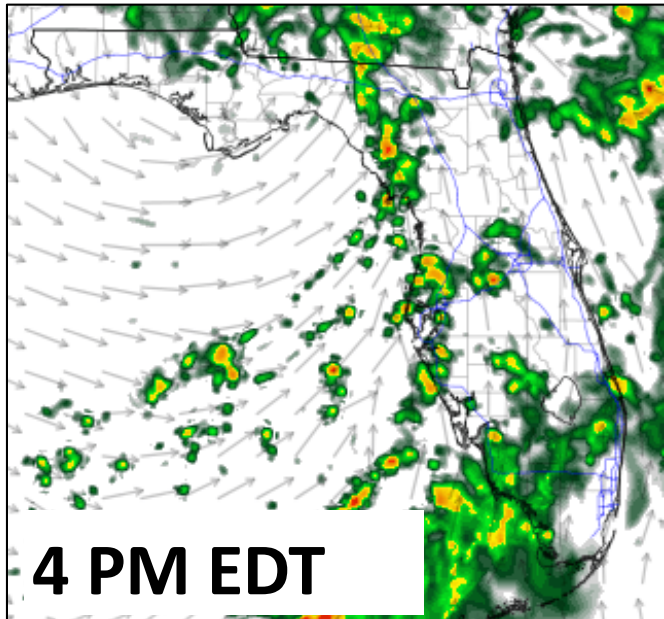
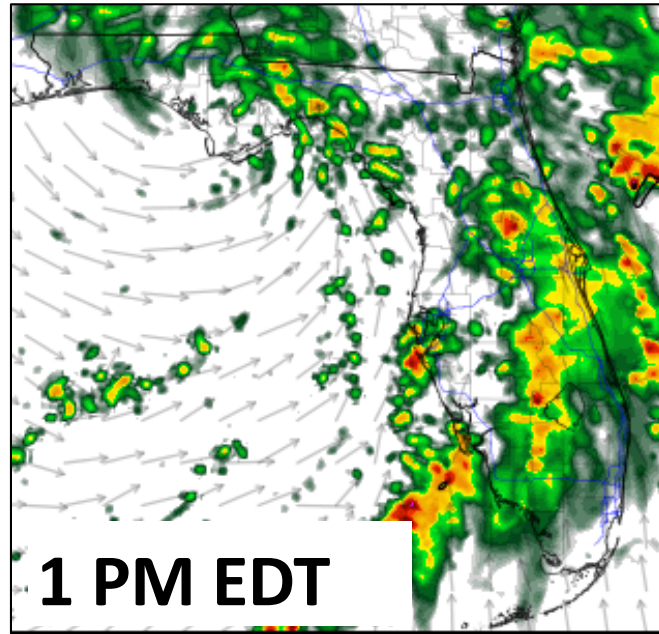
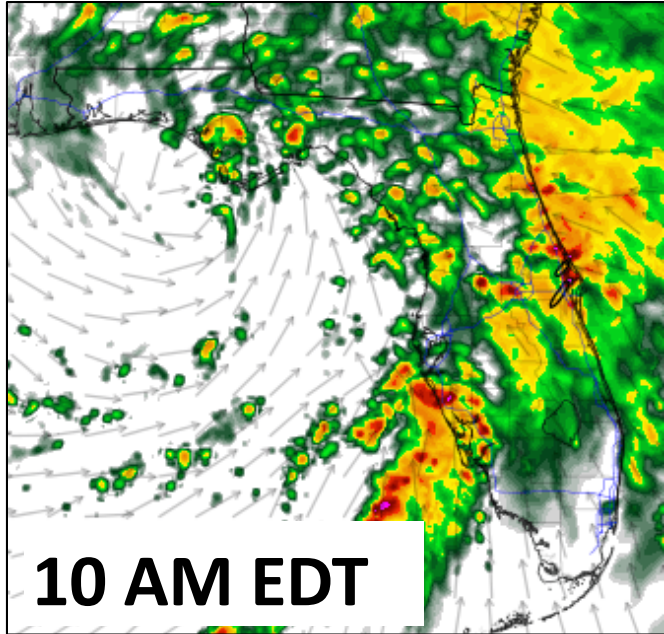
**Tropical storm conditions
(sustained winds 39+ mph)
expected.**

Wind Advisory

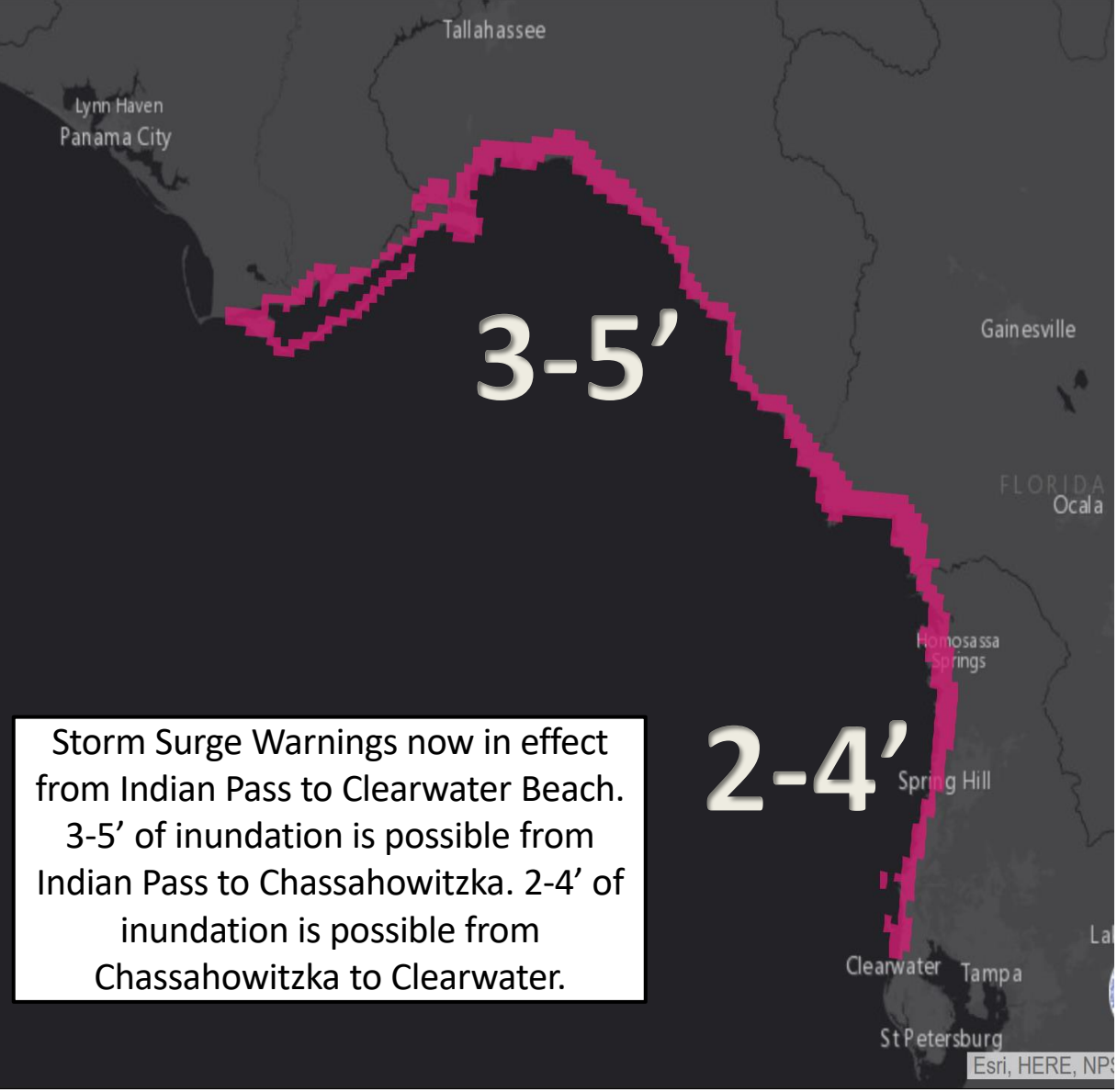
**Sustained winds of 25+ mph
with gusts of 35-45 mph.**



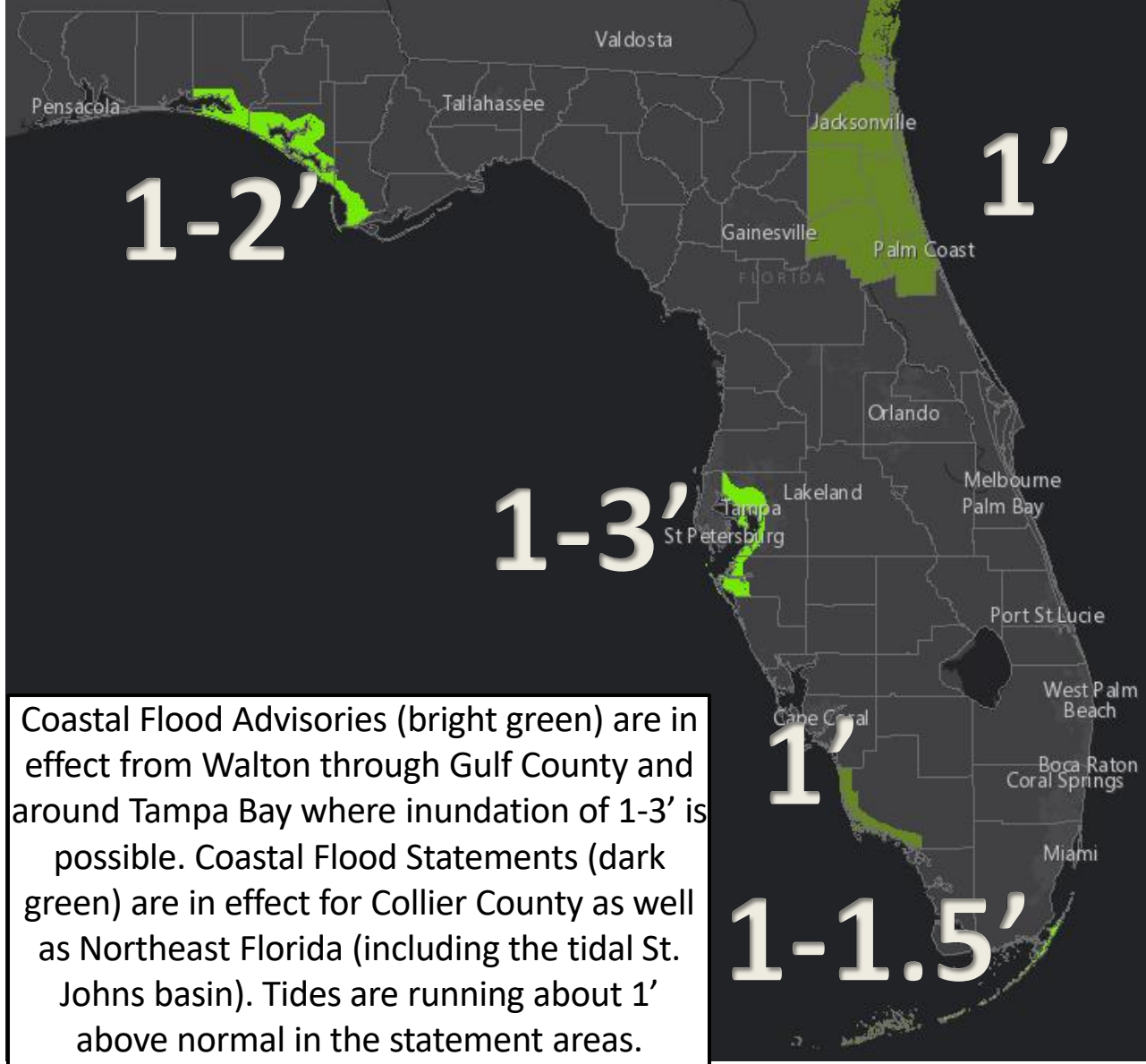
Model Simulated Radar Today



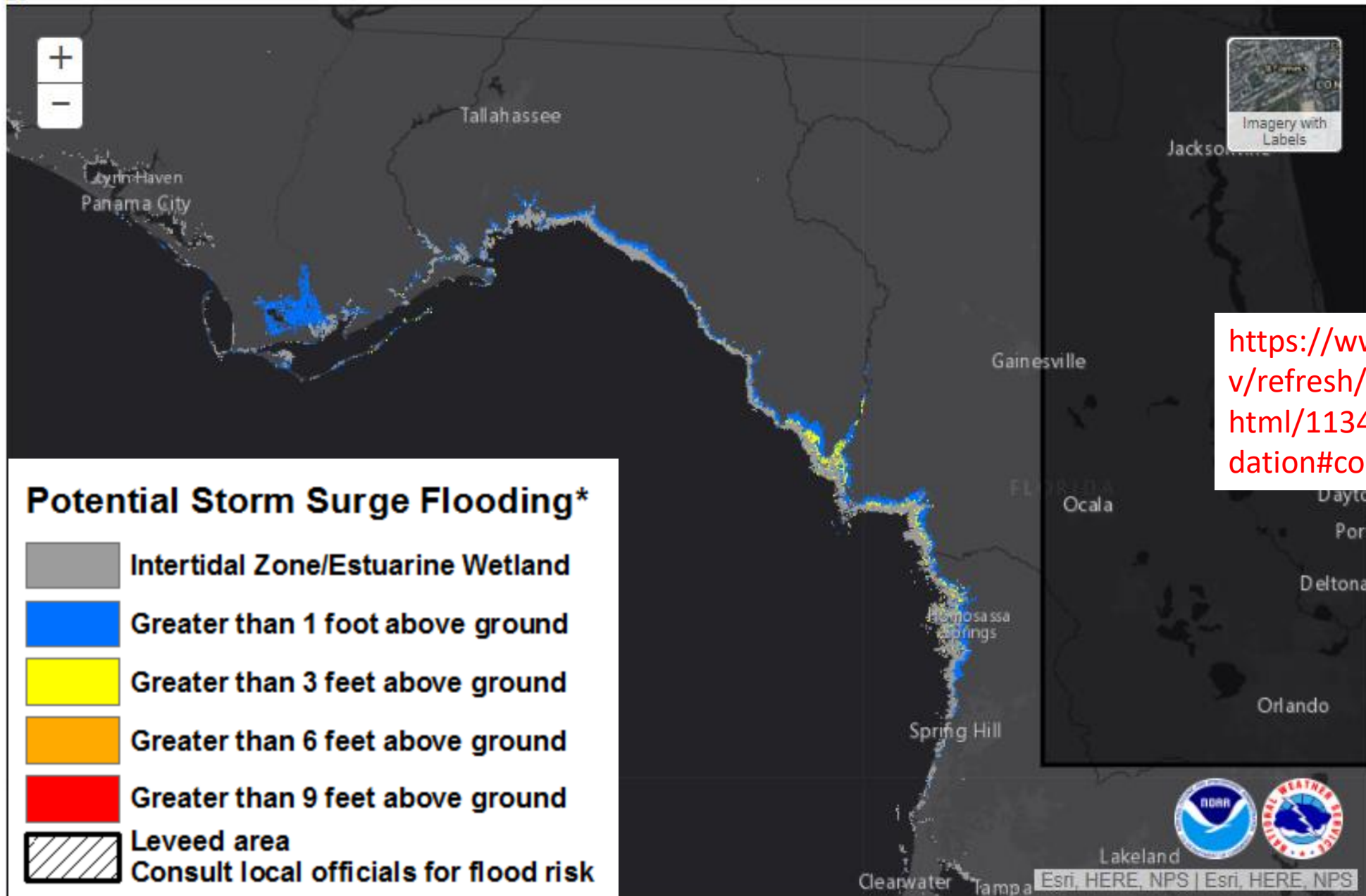
Most of the rain will be on the eastern side of Nestor with only scattered showers near the center. However, most of the rain will wane later in the afternoon, but the tornado threat will remain as bands continue to move through.



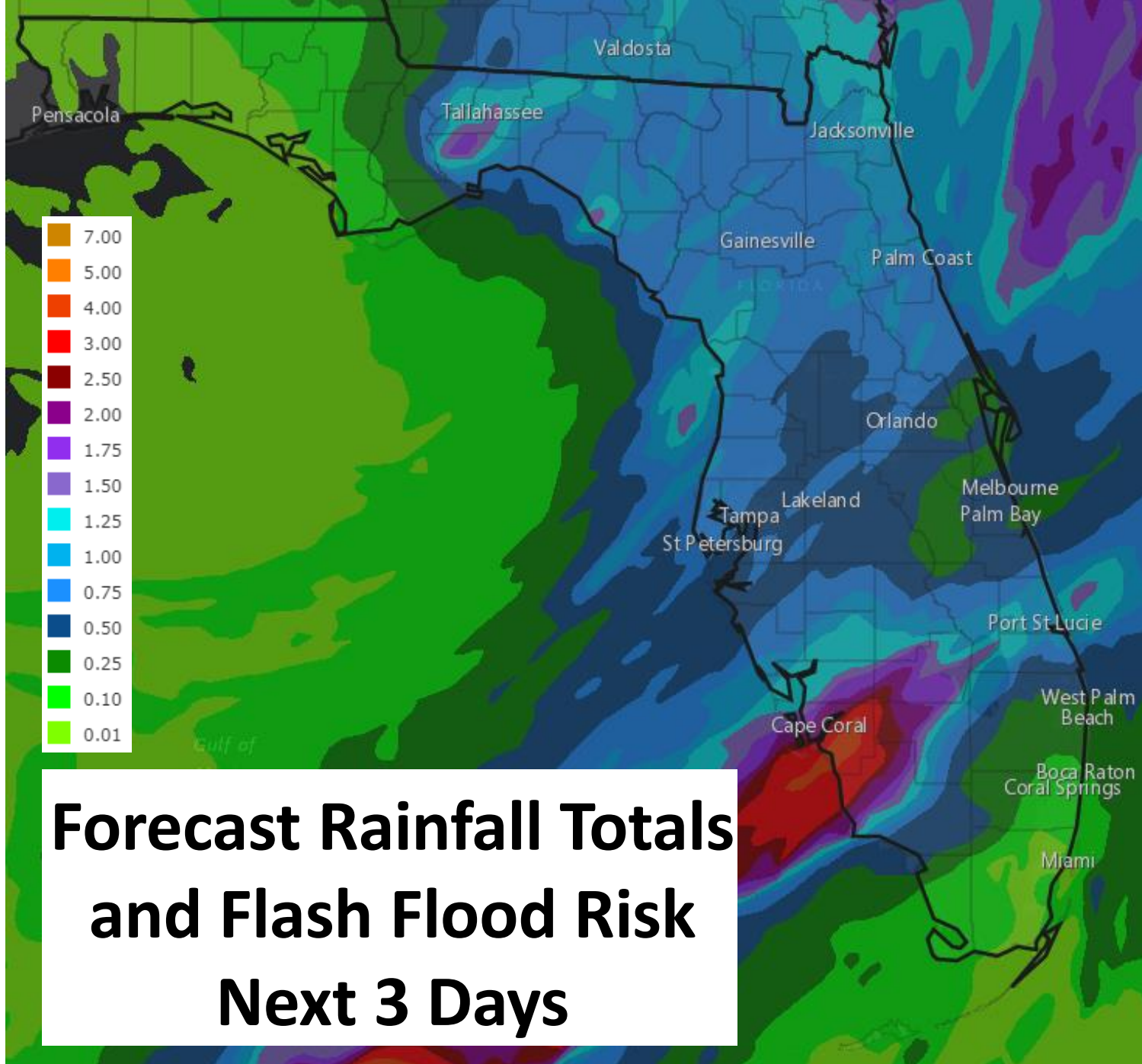
Storm Surge Warnings now in effect from Indian Pass to Clearwater Beach. 3-5' of inundation is possible from Indian Pass to Chassahowitzka. 2-4' of inundation is possible from Chassahowitzka to Clearwater.



Coastal Flood Advisories (bright green) are in effect from Walton through Gulf County and around Tampa Bay where inundation of 1-3' is possible. Coastal Flood Statements (dark green) are in effect for Collier County as well as Northeast Florida (including the tidal St. Johns basin). Tides are running about 1' above normal in the statement areas. Tides are also running about 1-1.5' above normal in the Florida Keys with a Coastal Flood Advisory for the upper and middle Keys and a Statement for the lower Keys.



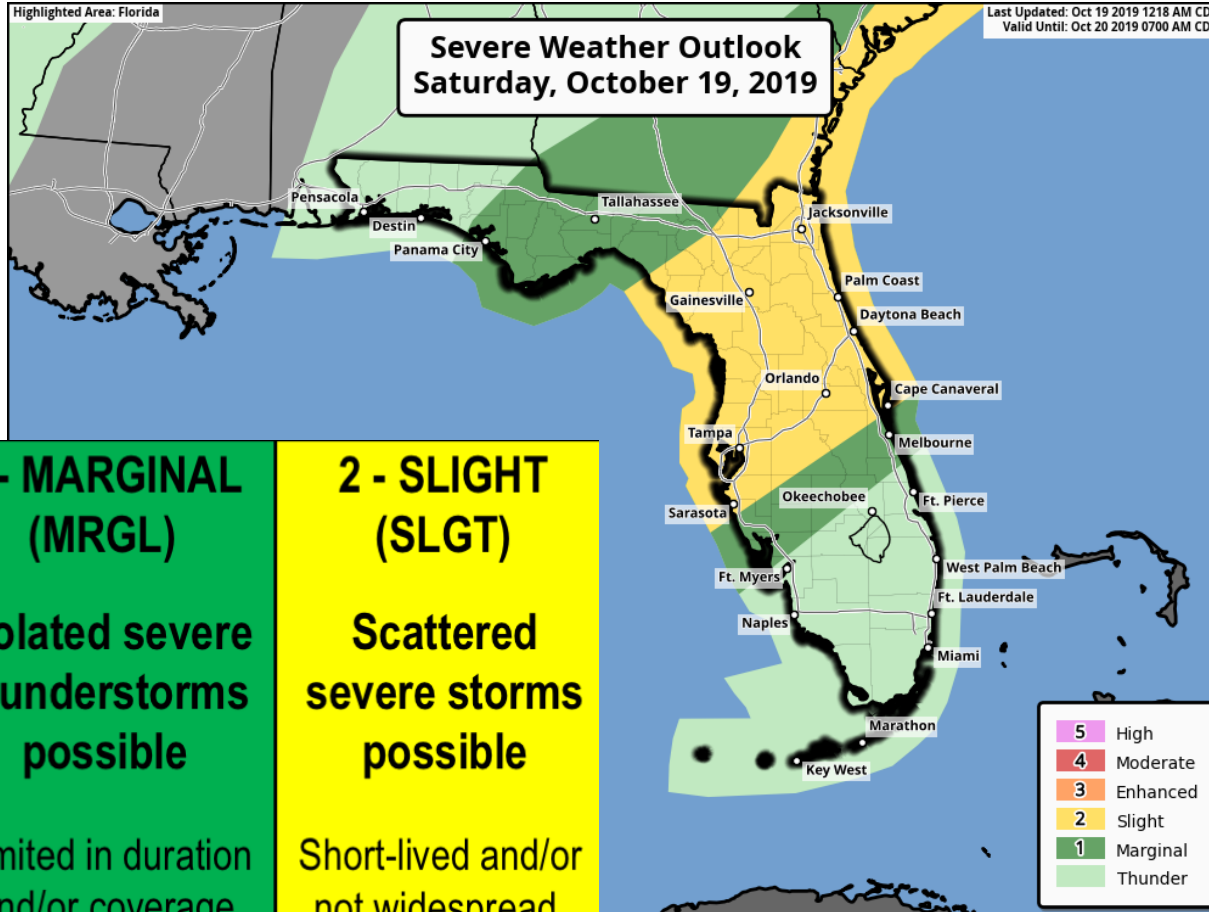
https://www.nhc.noaa.gov/refresh/graphics_at1+sat.html/113422.shtml?inundation#contents



Due to the fast forward movement of the system, widespread rainfall totals over the next 72 hours are forecast to be in the 1-2" range across most of North Florida with locally higher amounts of 3-5" possible near the West Coast. Most Peninsula areas should see about 1-2". This will not be enough to cause river flooding as rivers are very low, but heavy rain rates in short time periods could result in some flash flooding.

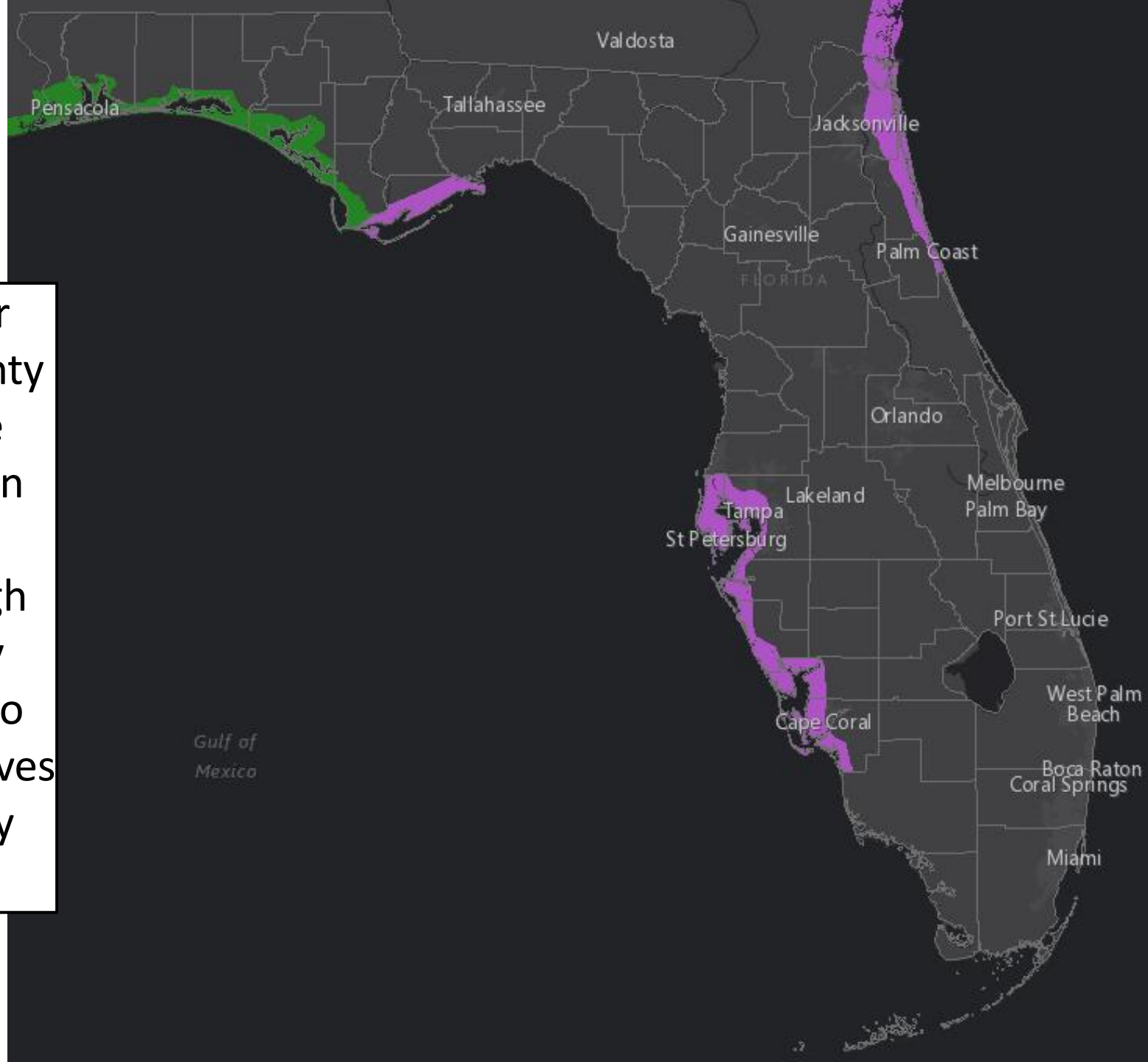


Severe Weather Risk Today

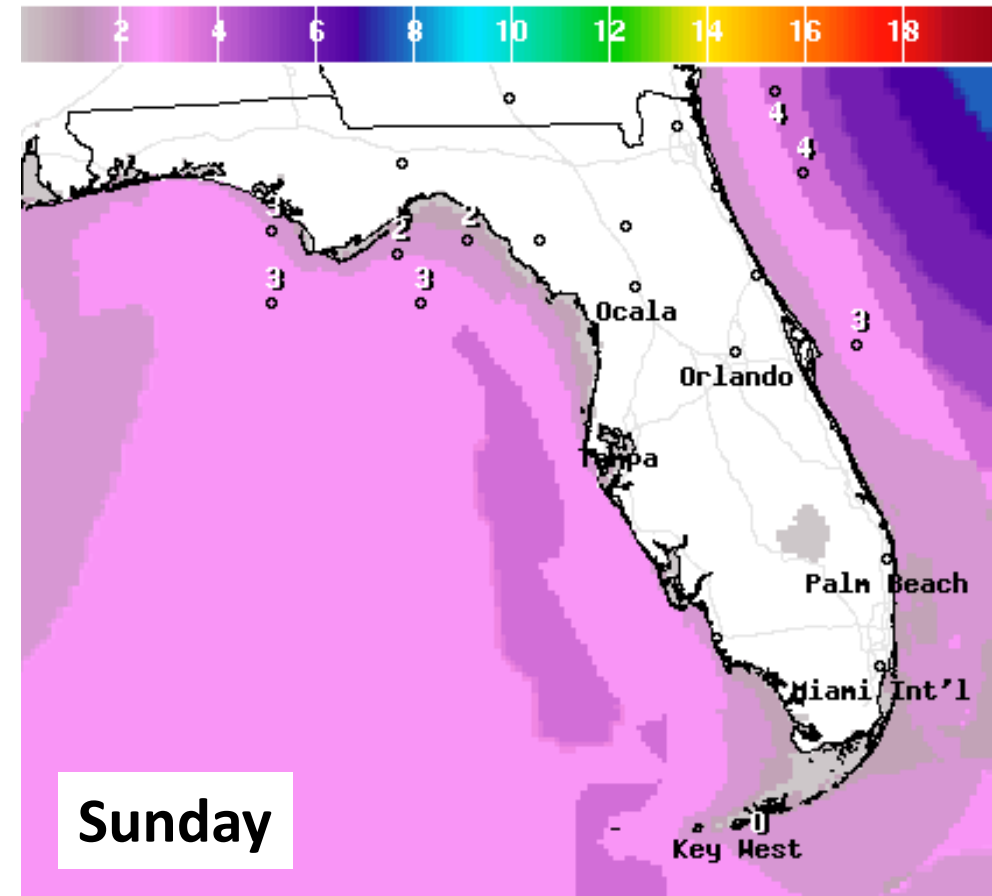
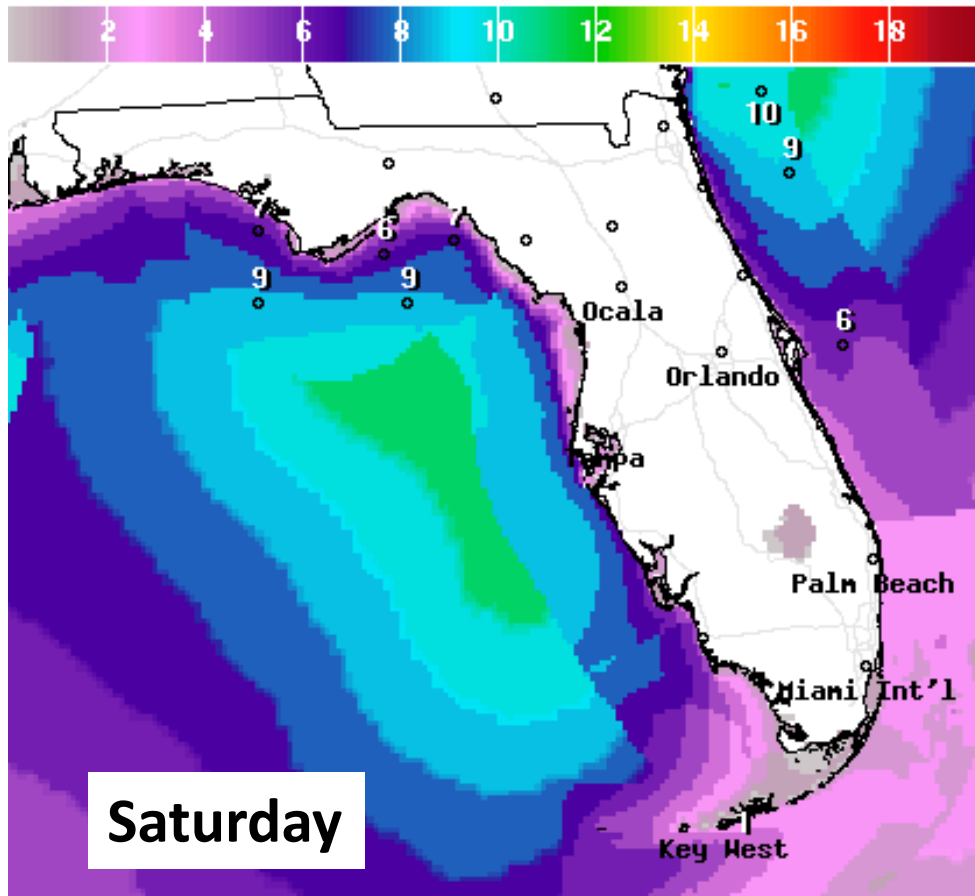


Isolated tornadoes will continue through mid-day in the rain bands east of the center of Nestor. A Tornado Watch is in effect for much of Northeast and Central Florida until NOON EDT.

High Surf Warnings are in effect for beaches from Escambia to Gulf County where breaking waves of 8-14' are expected. High Surf Advisories are in effect for Franklin County in the Panhandle, Pinellas and Hillsborough Counties southward to Lee County along the West Coast, and Nassau to Flagler County on the East Coast. Waves of 5-10' are possible in the advisory areas.



Forecast Wave Heights Saturday & Sunday



Waves will remain high across the Gulf Coast and along the Northeast Florida coast. This will continue to result in some beach erosion as well as dangerous rip currents. While waves will subside into Sunday, the rip current risk will likely remain high due to long-period swells continuing and any shifts in sandbars affecting the water currents.

Summary

Tropical Storm Nestor

- At 8 AM EDT, the center of Tropical Storm Nestor is located about 85 miles west-southwest of Panama City, moving northeast at 17 mph.
- Maximum sustained winds have decreased to near 50 mph, and further weakening is expected upon landfall.
- Landfall is likely over the next few hours in the Florida Panhandle.
- Most of the showers and storms remain to the east of the center, impacting the Peninsula.
- Surge is peaking this morning in the Big Bend, but may increase along the Nature Coast as winds shift out of the southwest later this morning.

Florida Outlook:

- Tropical Storm Warnings are in effect for coastal Walton, Washington, Bay, Jackson, Calhoun, Gulf, Gadsden, Liberty, Franklin, Leon, Wakulla, Jefferson, Madison, Taylor, Lafayette, Dixie, and coastal Levy Counties.
- Wind Advisories are in effect for Northeast Florida and the Nature Coast.
- Storm Surge Warnings are in effect from Indian Pass to Clearwater Beach.
- Storm surge of 3-5' remains possible from Indian Pass to Chassahowitzka and 2-4' from Chassahowitzka to Clearwater Beach. The surge is peaking this morning with a gradual decline in the afternoon
- Coastal Flood Advisories are in effect for the Tampa Bay area where 1-3' of surge is possible. Coastal Flood Statements are in effect for coastal Collier County and Northeast Florida including the tidal St. Johns basin.
- Rain and thunderstorms are ongoing in the Peninsula with a localized heavy rain, gusty winds, and isolated tornado threat. Only scattered showers remain near the center.
- Rainfall totals of 1-2" are possible with localized amount of 3-5" possible along the West Coast.
- There is a Marginal to Slight Risk of severe weather for much of North and Central Florida today with the isolated tornado threat.
- Waves remain high along the Gulf Coast and the Northeast Florida coast. This will result in dangerous rip currents and minor beach erosion.

The next tropics packet will be issued Saturday afternoon. For the latest information on the tropics, please visit the National Hurricane Center website at www.hurricanes.gov.



TROPICAL UPDATE



Created by:

Cameron Young, Assistant State Meteorologist

Cameron.Young@em.myflorida.com

State Meteorological Support Unit

Florida Division of Emergency Management

Users wishing to subscribe (approval pending) to this distribution list, register at:

https://public.govdelivery.com/accounts/FLDEM/subscriber/new?topic_id=SERT_Met_Tropics.

Other reports available for subscription are available at:

<https://public.govdelivery.com/accounts/FLDEM/subscriber/new?preferences=true>