



TROPICAL UPDATE



5 PM EDT

Friday, October 18, 2019

Tropical Storm Nestor

This update is intended for government and emergency response officials, and is provided for informational and situational awareness purposes only. Forecast conditions are subject to change based on a variety of environmental factors. For additional information, or for any life safety concerns with an active weather event please contact your County Emergency Management or Public Safety Office, local National Weather Service forecast office, or visit the National Hurricane Center website at www.hurricanes.gov.

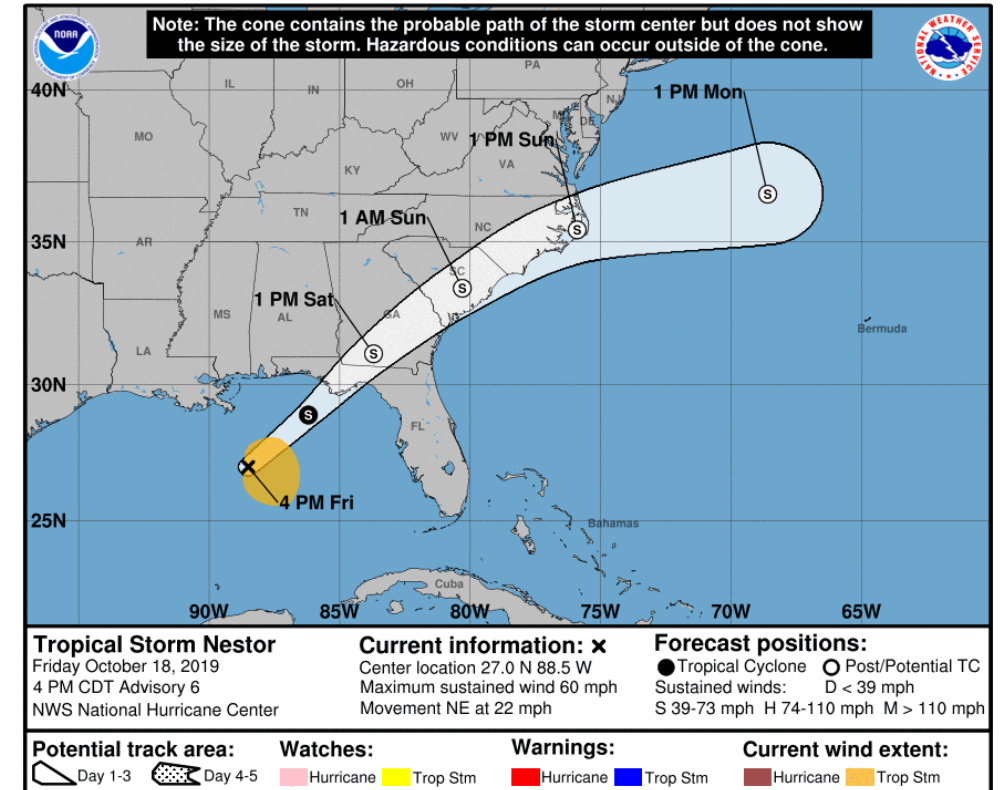
Tropical Storm Nestor

Friday, October 18, 5 PM ET

	MINIMAL	Low	MODERATE	HIGH	EXTREME
 WINDS					
 STORM SURGE					
 FLASH FLOODING					
 TORNADOES					

	Low	MODERATE	HIGH
 RIP CURRENTS			

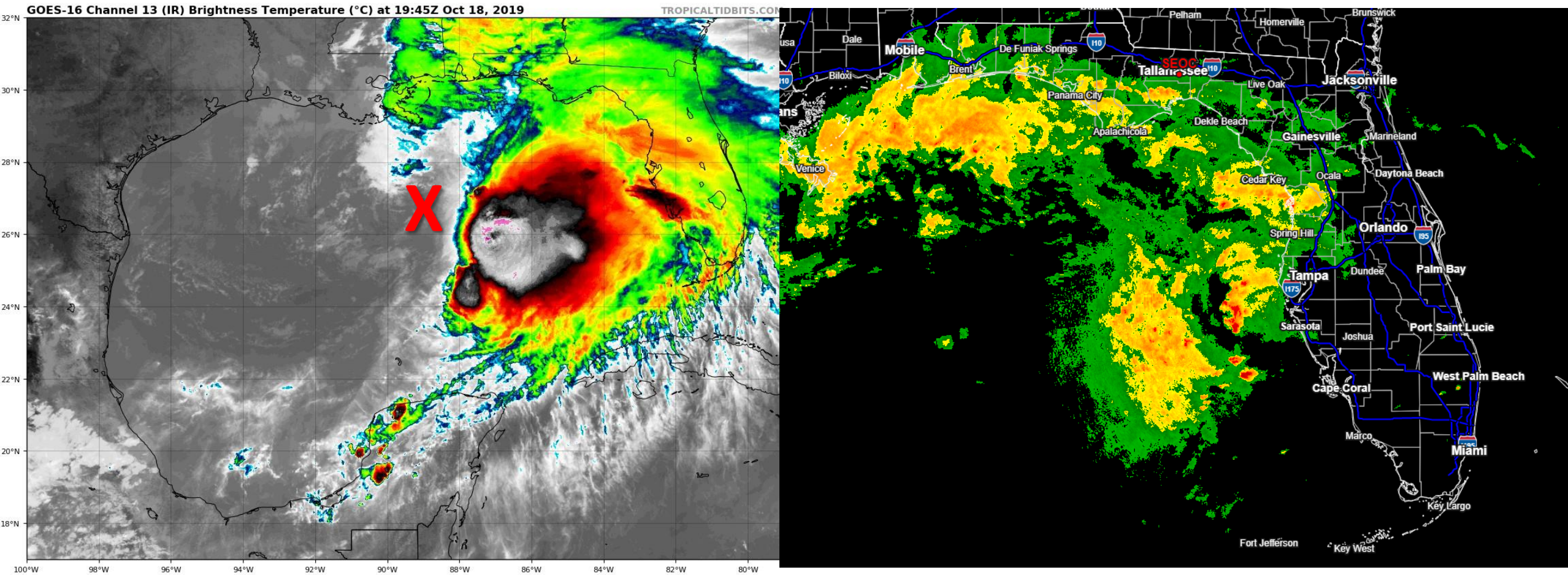
National Hurricane Center Map



Changes Since This Morning:

- PTC #16 has now been designated as Tropical Storm Nestor.
- Sustained winds have increased to near 60 mph.
- Rain already moving onshore with more through the night into Saturday.
- Primary concern is coastal flooding, but flash flooding, gusty winds, and tornadoes all possible.

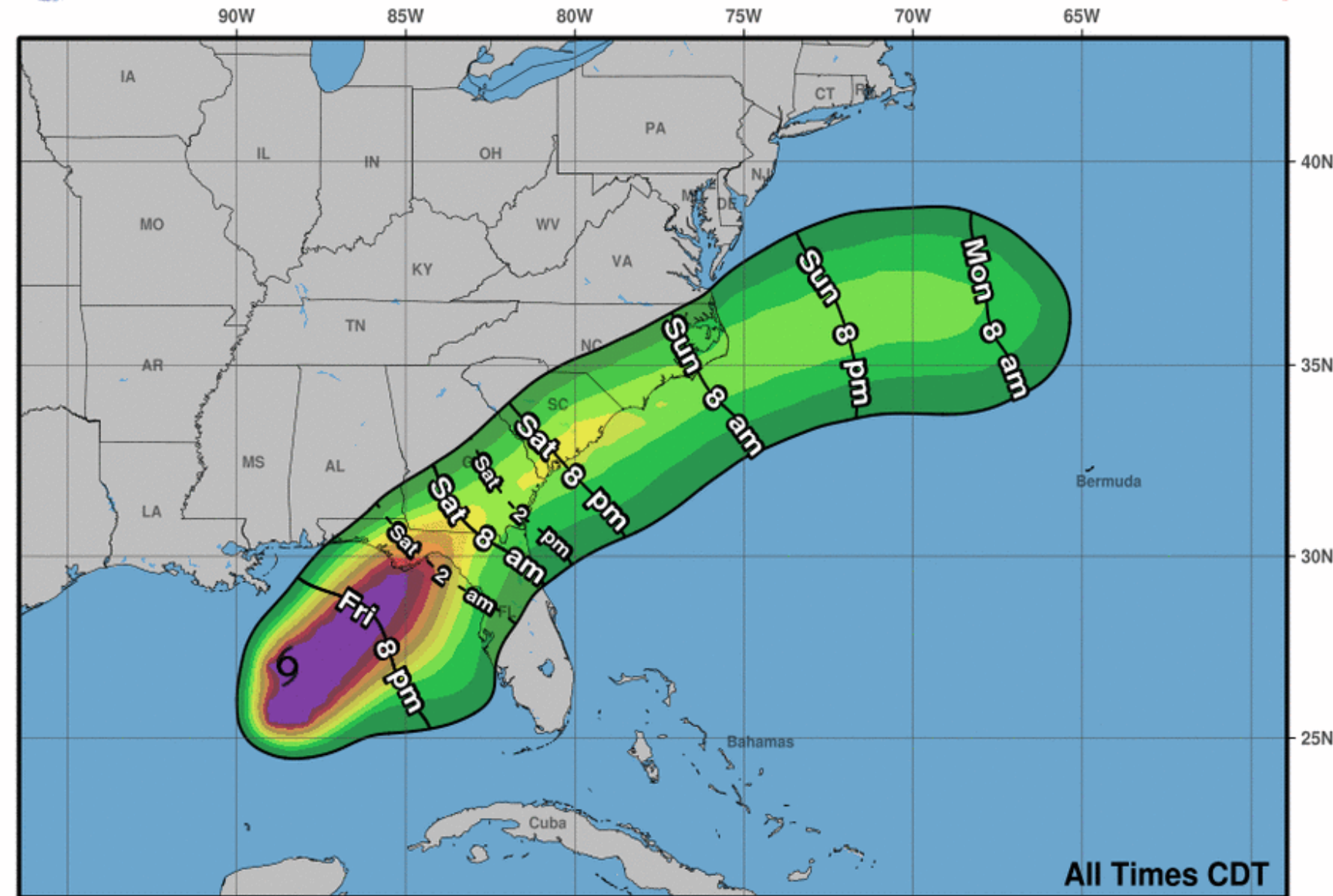
Tropical Storm Nestor Satellite Image (left) and Radar (right)



The Hurricane Hunters have found a center that has become better defined. Thus, PTC #16 has been upgraded to Tropical Storm Nestor. However, the center (red X) remains well displaced from the thunderstorms due to strong wind shear. This will continue through landfall. This is not a typical tropical storm as nearly all the strongest winds and rainfall is away from the center.



Most Likely Arrival Time of Tropical-Storm-Force Winds



Tropical Storm Wind Probabilities (39+ mph)

Destin: 17%
Panama City: 66%
Apalachicola: 89%
St. Marks: 64%
Tallahassee: 58%
Cedar Key: 23%
Tampa: 6%
Orlando: 4%
Daytona Beach: 4%
Gainesville: 14%
Jacksonville: 15%

Tropical Storm Nestor
Fri. Oct. 18, 2019 4 pm CDT
Advisory 6

Storm Location &
Wind Speed

- < 34 kt (39 mph)
- 34-63 kt (39-73 mph)
- ≥ 64 kt (74 mph)

5-day chance of receiving sustained 34+ kt (39+ mph) winds

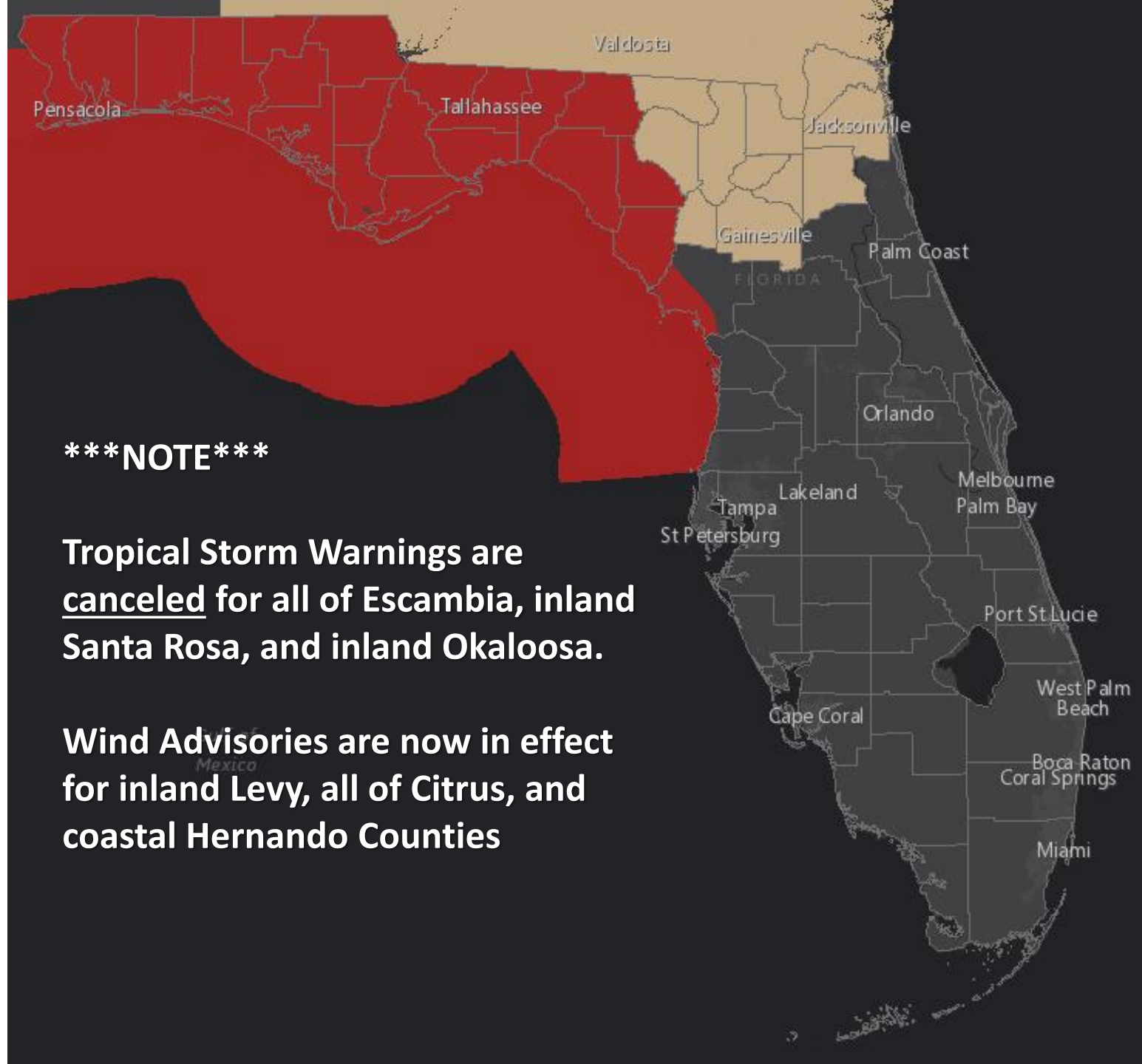
5 10 20 30 40 50 60 70 80 90 100 %

Tropical Storm Warning

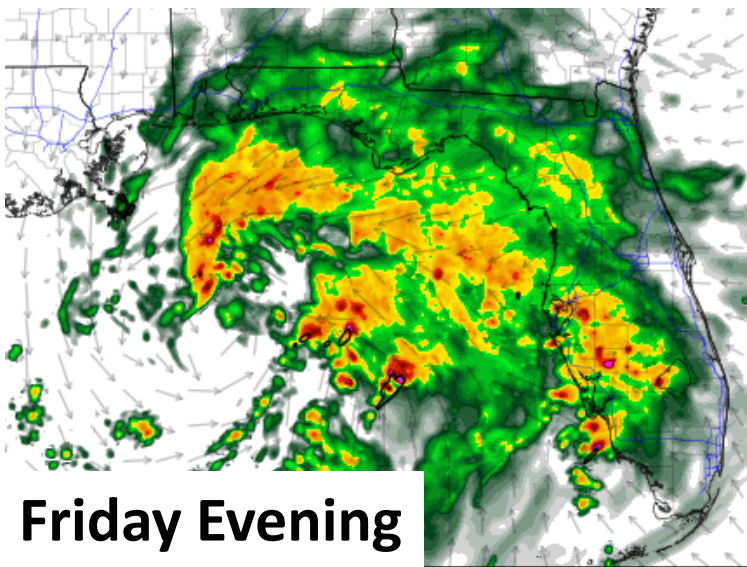
Tropical storm conditions
(sustained winds 39+ mph)
expected within 36 hours.

Wind Advisory

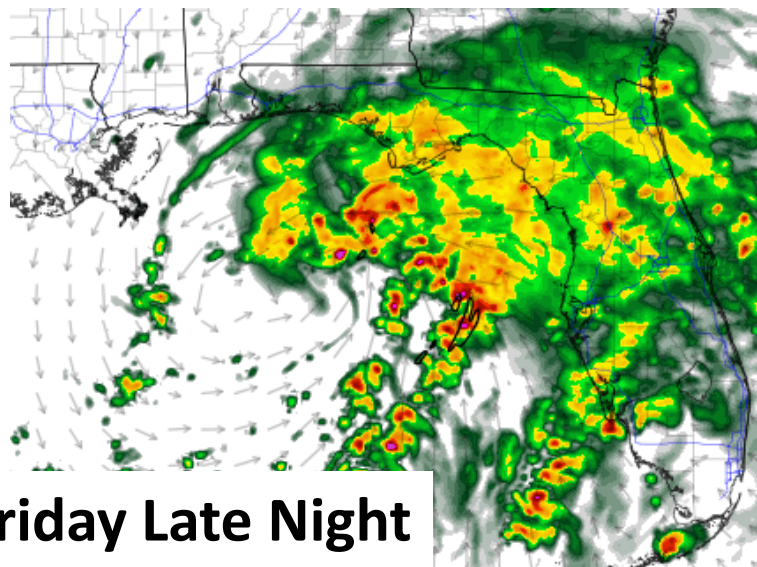
Sustained winds of 25-30 mph
with gusts of 40-45 mph.



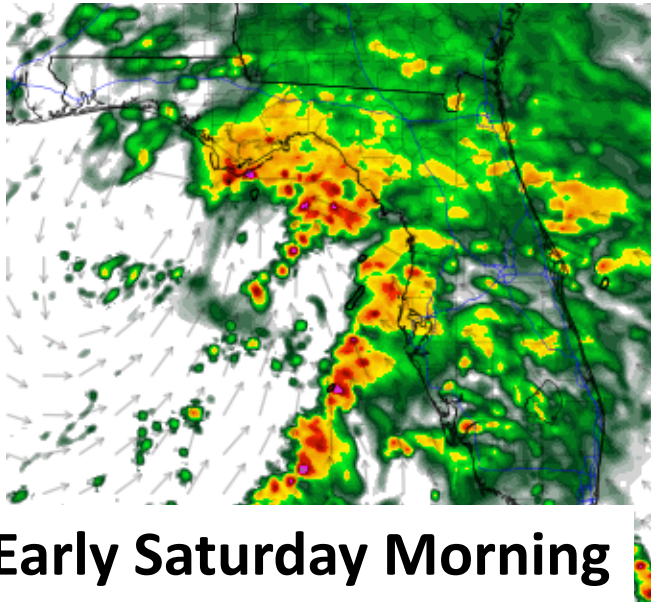
Model Simulated Radar Tonight & Saturday



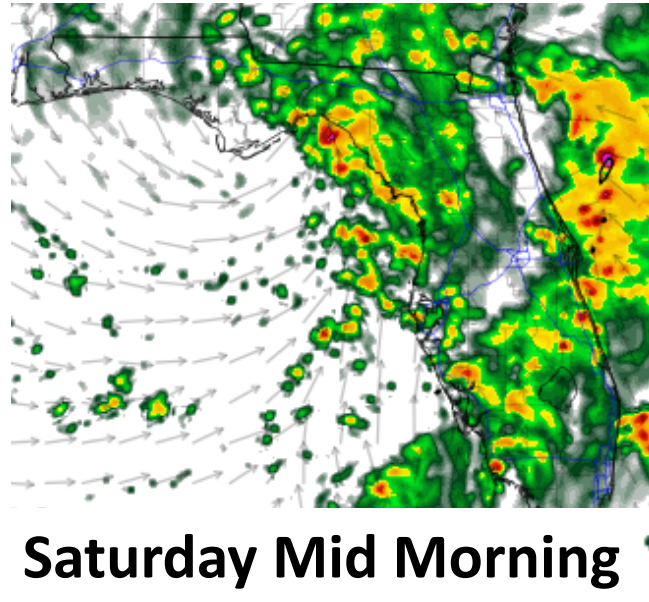
Friday Evening



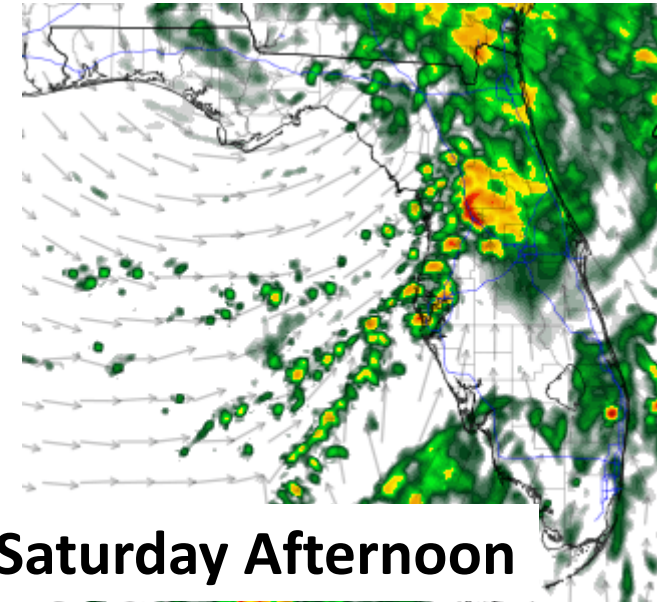
Friday Late Night



Early Saturday Morning



Saturday Mid Morning

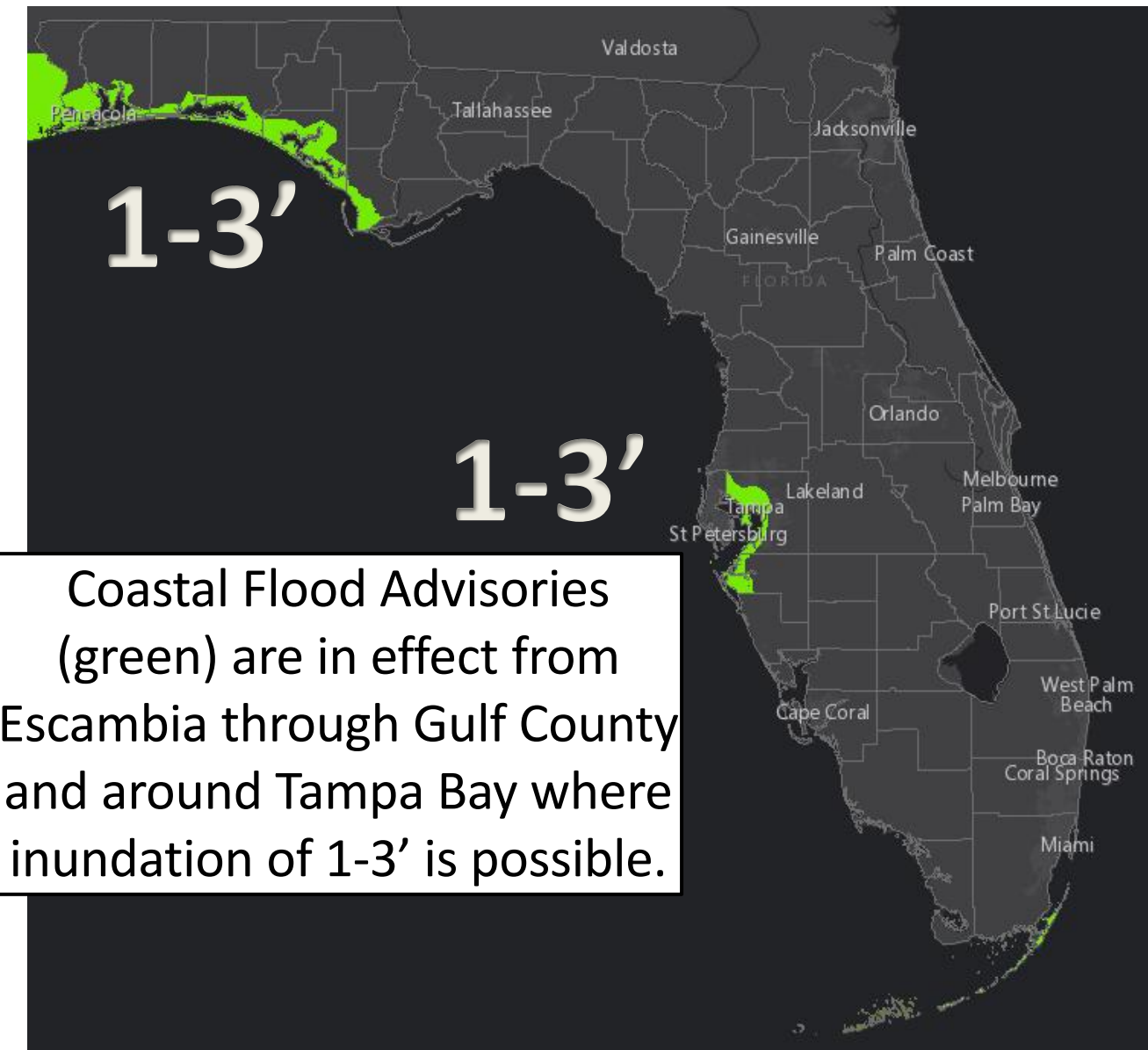


Saturday Afternoon

Showers are affecting coastal areas along the Panhandle and West Coast. Move rain bands will continue to move onshore through tonight, with heavier rain arriving overnight into Saturday. Most of the rain will end by Saturday evening.

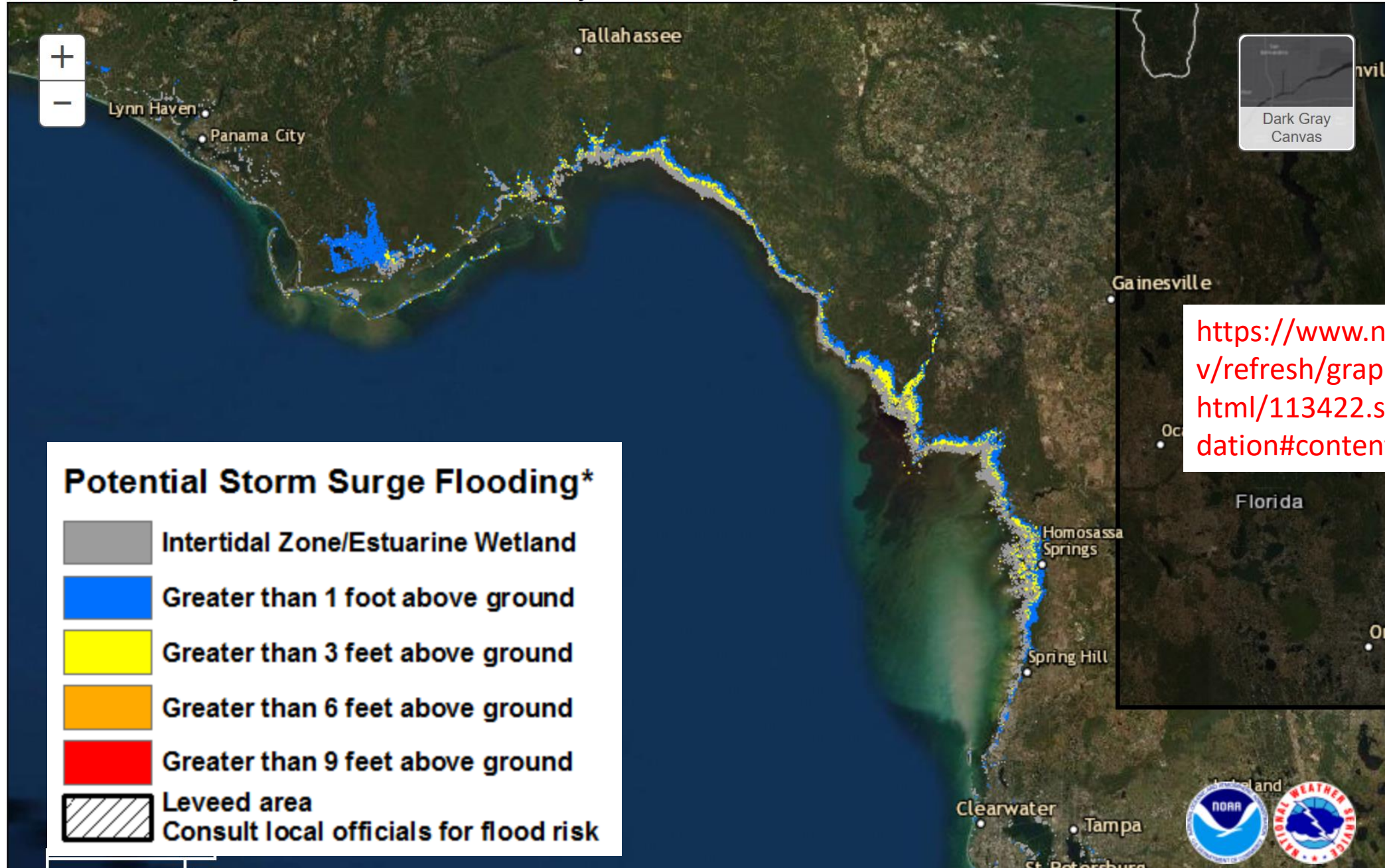


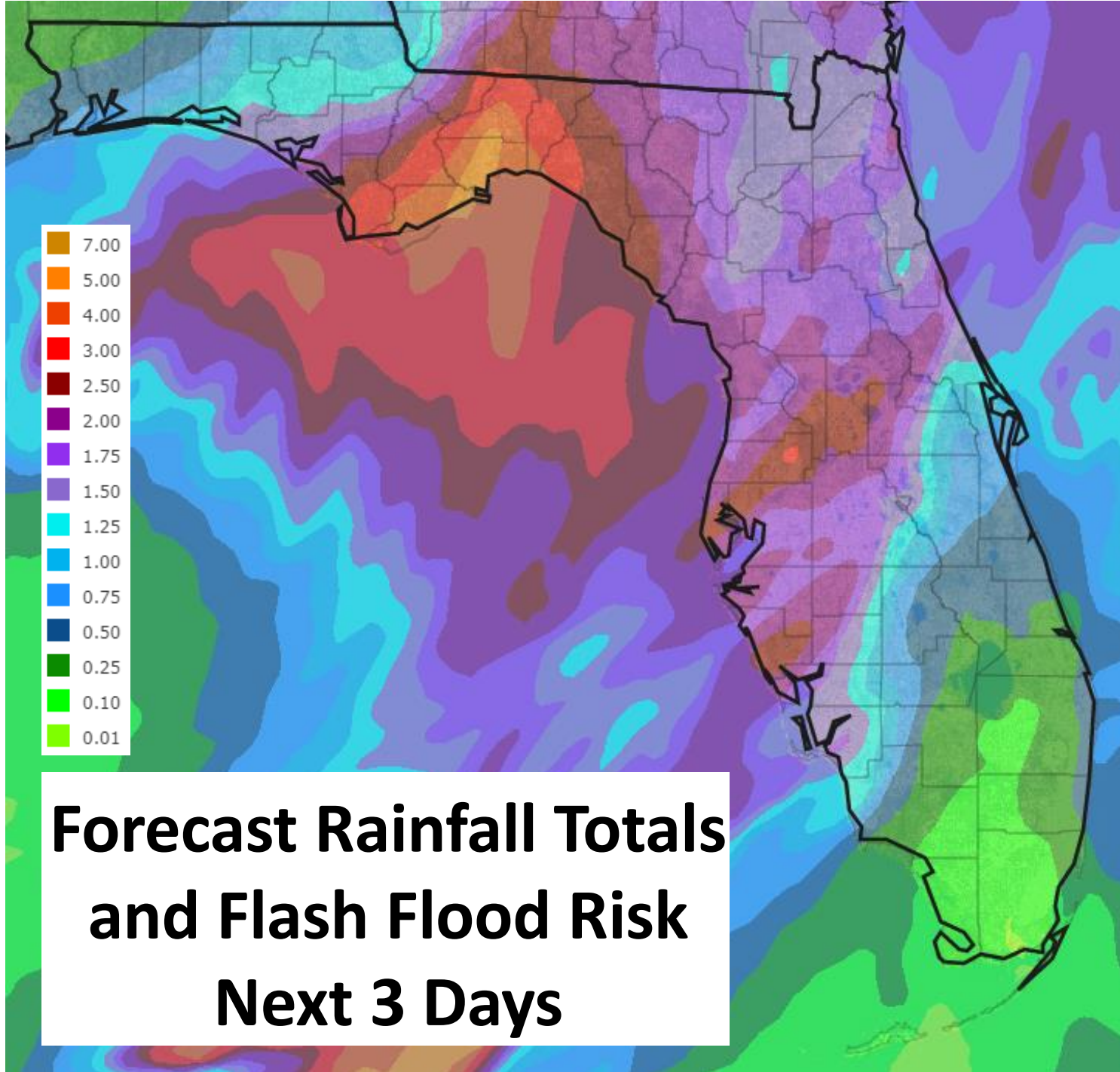
Storm Surge Warnings now in effect from Indian Pass to Clearwater Beach. 3-5' of inundation is possible from Indian Pass to Chassahowitzka. 2-4' of inundation is possible from Chassahowitzka to Clearwater.



Coastal Flood Advisories (green) are in effect from Escambia through Gulf County and around Tampa Bay where inundation of 1-3' is possible.

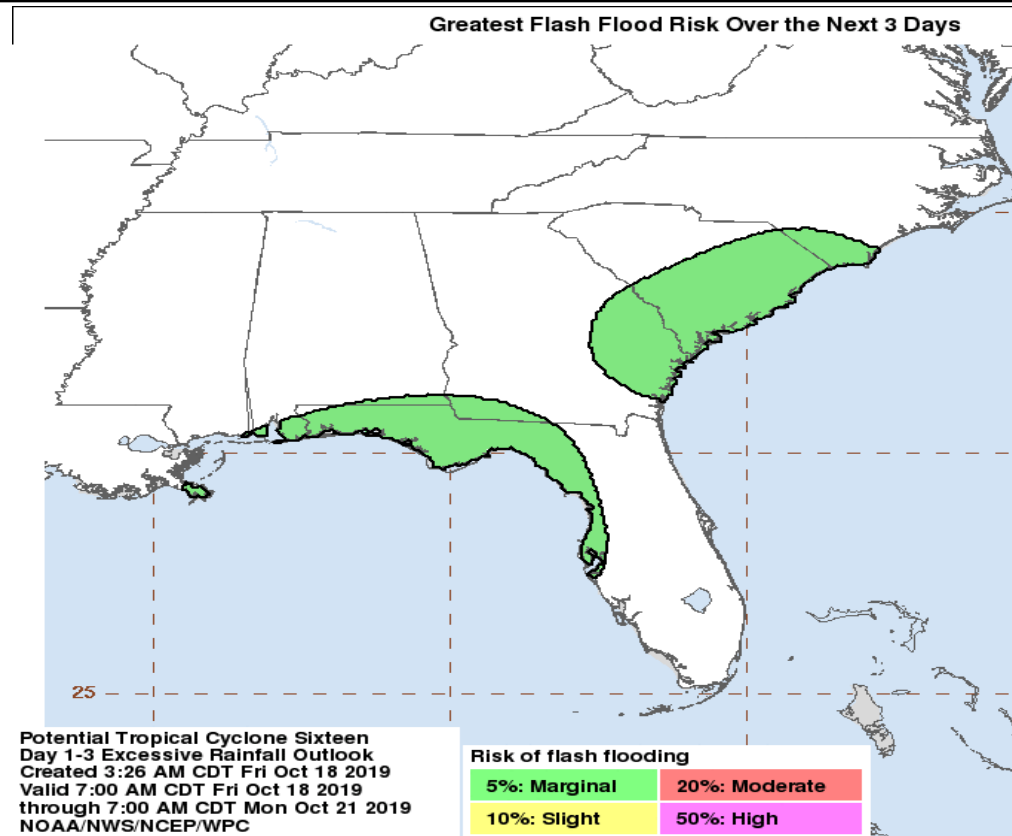
NHC Potential Storm Surge Flooding Map
Potential Tropical Cyclone SIXTEEN (2019) Advisory 04
From 04 AM CDT Friday October 18 to 04 AM CDT Tuesday October 22





**Forecast Rainfall Totals
and Flash Flood Risk
Next 3 Days**

Due to the fast forward movement of the system, widespread rainfall totals over the next 72 hours are forecast to be in the 1-3" range across most of North Florida with locally higher amounts of 4-6" possible near the Panhandle and Big Bend coast. Most Peninsula areas should see about 1-2". This will not be enough to cause river flooding across the Panhandle as rivers are very low, but heavy rain rates in short time periods could result in some flash flooding.

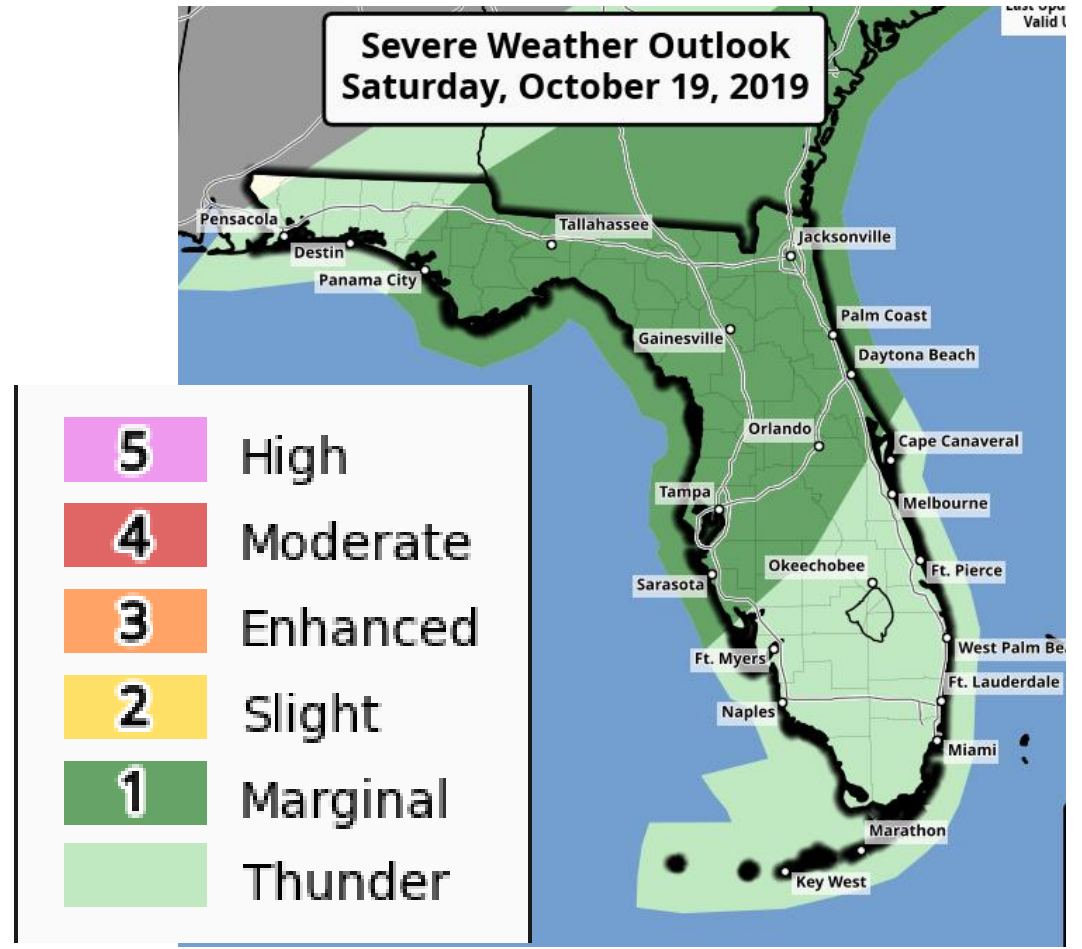
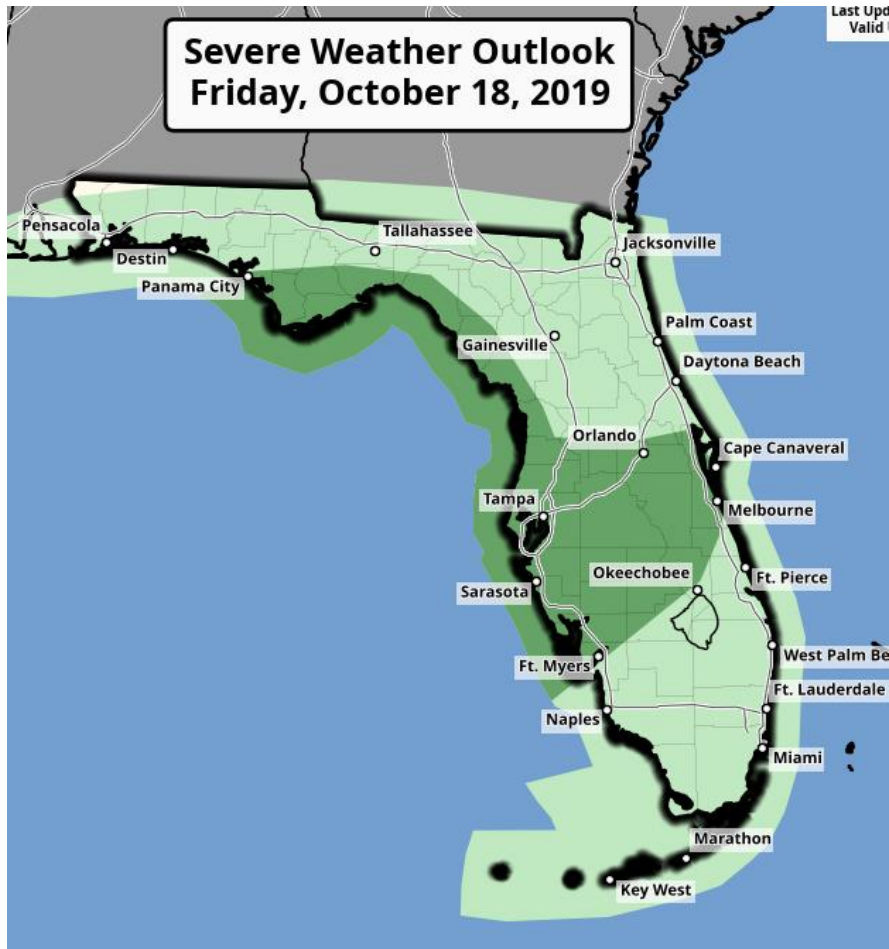


Severe Weather Risks Friday & Saturday

**1 - MARGINAL
(MRGL)**

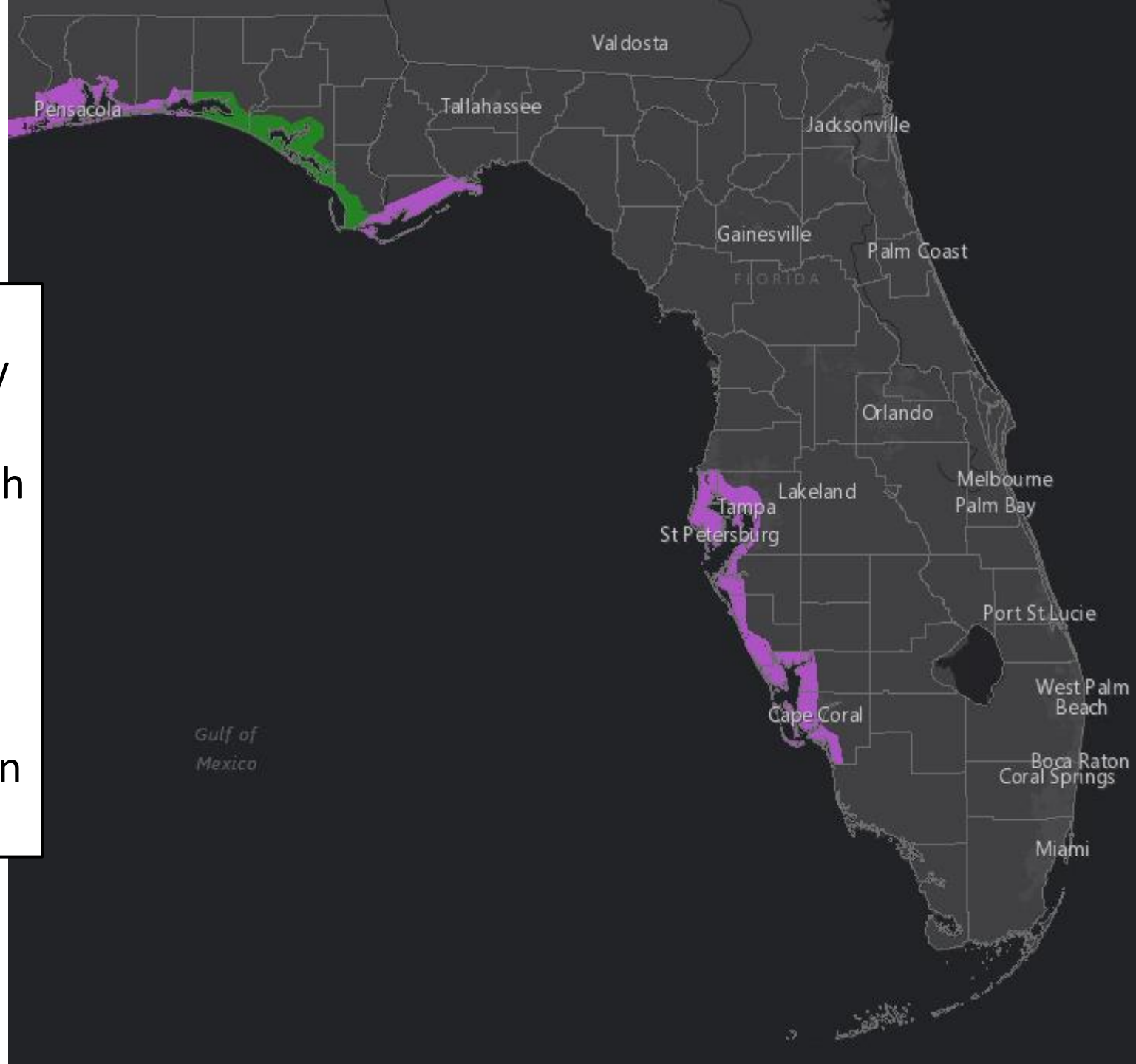
**Isolated severe
thunderstorms
possible**

Limited in duration
and/or coverage
and/or intensity

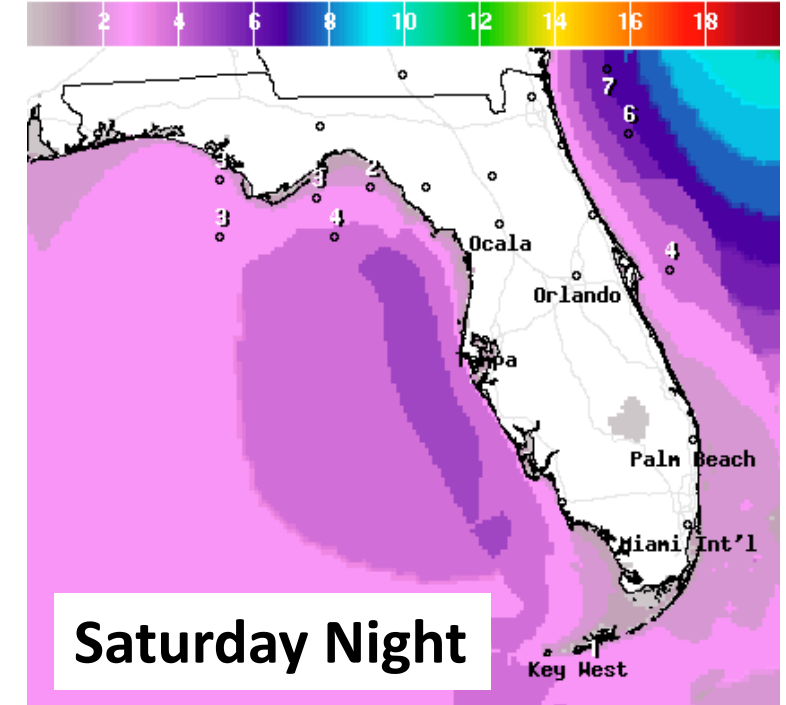
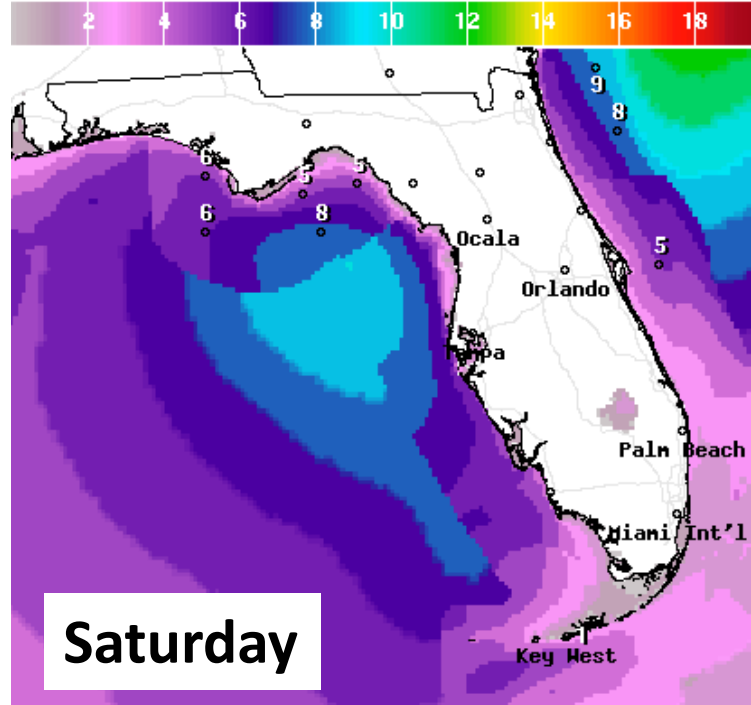
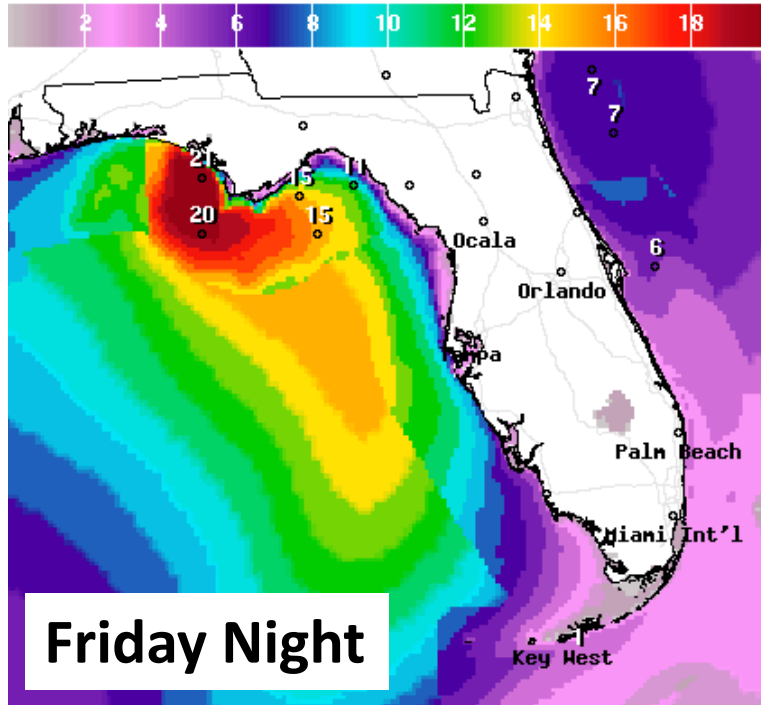


Isolated tornadoes will be possible in some of the bands associated with Nestor. The Storm Prediction Center has outlined the immediate coastal areas of the eastern Panhandle and Big Bend as well as Central Florida in a Marginal Risk of severe weather (level 1 of 5) on Friday. This risk expands to include much of North and Central Florida on Saturday.

High Surf Warnings are in effect for beaches from Walton to Gulf County where breaking waves of 10-15' (possibly up to 20') are expected. High Surf Advisories are in effect from Escambia through Okaloosa County, Franklin County, and Pinellas and Hillsborough Counties through Lee County. Waves of 5-10' are possible in those areas.



Forecast Wave Heights Friday & Saturday



Waves continue building as Nestor approaches the state. Dangerous rip currents and some beach erosion are likely with these high breaking waves through at least Saturday.

Summary

Tropical Storm Nestor

- At 2 PM EDT, the National Hurricane Center upgraded PTC #16 to Tropical Storm Nestor.
- Nestor is located about 280 miles southwest of Panama City, moving northeast 22 mph.
- Maximum sustained winds have increased to near 60 mph. Some slight strengthening is still possible prior to landfall.
- Landfall is likely on Saturday morning in the Florida Panhandle, but conditions will deteriorate tonight into Saturday morning.
- Nestor is forecast to move quickly into Georgia, South Carolina and North Carolina on Saturday.

Florida Outlook:

- Tropical Storm Warnings are in effect for coastal Santa Rosa, coastal Okaloosa, Walton, Holmes, Washington, Bay, Jackson, Calhoun, Gulf, Gadsden, Liberty, Franklin, Leon, Wakulla, Jefferson, Madison, Taylor, Lafayette, and coastal Levy Counties.
- Wind Advisories are in effect for Northeast Florida and coastal West Central Florida.
- Storm Surge Warnings are now in effect from Indian Pass to Clearwater Beach.
- Storm surge of 3-5' is possible from Indian Pass to Chassahowitzka and 2-4' is possible from Chassahowitzka to Clearwater Beach.
- Coastal Flood Advisories are in effect from Escambia through Gulf County and for the Tampa Bay area where 1-3' of surge is possible.
- Some rain is already falling along the coast in North Florida and the West Coast, and will spread inland through the day into tonight.
- The main rain and wind impacts will be Friday night through Saturday afternoon.
- Rainfall totals of 1-3" with localized higher amounts of 4-6" are possible in North Florida with totals of 1-2" in Central Florida.
- There is a Marginal Risk of severe weather for the coastal Big Bend and along the West Coast southward to Fort Myers and eastward to Melbourne for tonight, and a Marginal Risk for the eastern Panhandle, Big Bend, and the Peninsula north of I-4 for Saturday. Isolated tornadoes will be possible in the bands of PTC #16.
- Waves are building today into Saturday as Nestor approaches. Dangerous rip currents and some beach erosion are likely along the Panhandle and West Coast.

The next tropics packet will be issued Saturday morning. For the latest information on the tropics, please visit the National Hurricane Center website at www.hurricanes.gov.



TROPICAL UPDATE



Created by:

Cameron Young, Assistant State Meteorologist

Cameron.Young@em.myflorida.com

State Meteorological Support Unit

Florida Division of Emergency Management

Users wishing to subscribe (approval pending) to this distribution list, register at:

https://public.govdelivery.com/accounts/FLDEM/subscriber/new?topic_id=SERT_Met_Tropics.

Other reports available for subscription are available at:

<https://public.govdelivery.com/accounts/FLDEM/subscriber/new?preferences=true>