



# TROPICAL UPDATE



12 PM EDT

Thursday, October 17, 2019

Potential Tropical Cyclone #16

This update is intended for government and emergency response officials, and is provided for informational and situational awareness purposes only. Forecast conditions are subject to change based on a variety of environmental factors. For additional information, or for any life safety concerns with an active weather event please contact your County Emergency Management or Public Safety Office, local National Weather Service forecast office, or visit the National Hurricane Center website at [www.hurricanes.gov](http://www.hurricanes.gov).

# Atlantic Basin Satellite Image

Chance of development: — None    Low    Medium    High

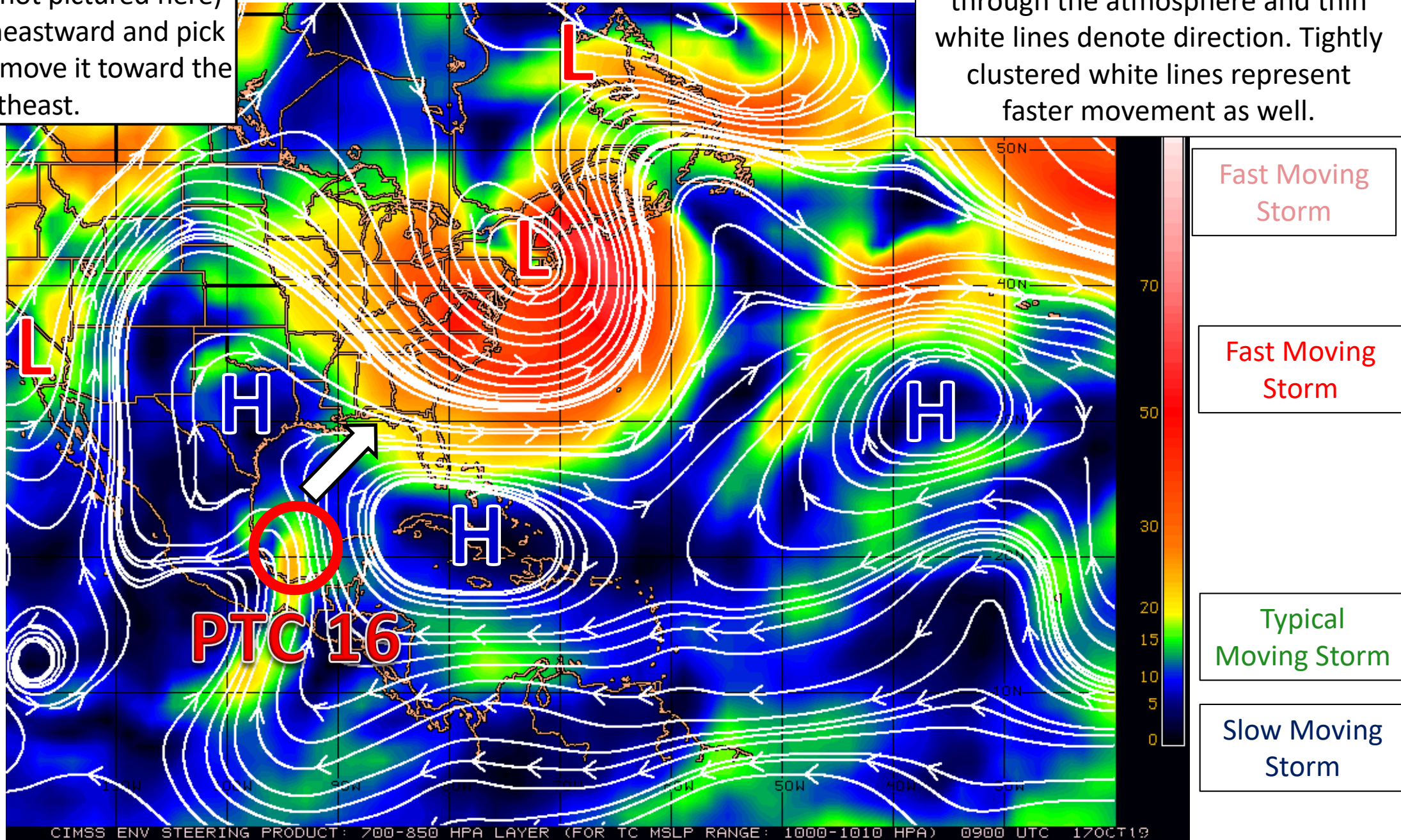




# Steering Currents

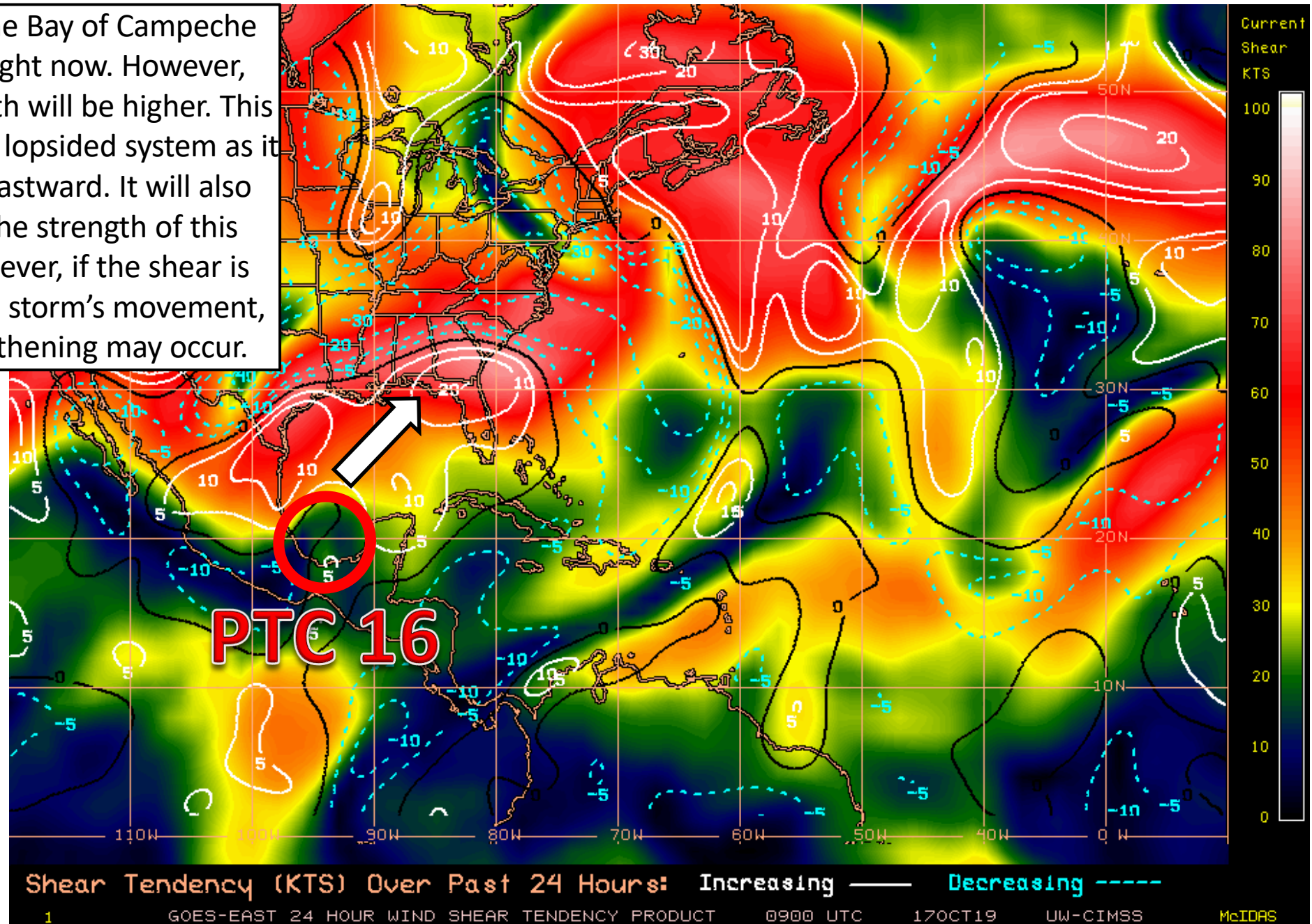
A vigorous upper level low over western Texas (not pictured here) will move southeastward and pick up PTC #16 and move it toward the northeast.

Color denotes the movement speed through the atmosphere and thin white lines denote direction. Tightly clustered white lines represent faster movement as well.



# Wind Shear (shaded) and Wind Shear Tendencies (contoured)

Shear over the Bay of Campeche Low is low right now. However, shear in its path will be higher. This may result in a lopsided system as it turns northeastward. It will also likely limit the strength of this system. However, if the shear is parallel to the storm's movement, some strengthening may occur.



HIGH Shear  
(Unfavorable)

HIGH Shear  
(Unfavorable)

MODERATE  
Shear  
(Neutral)

LOW Shear  
(Favorable)

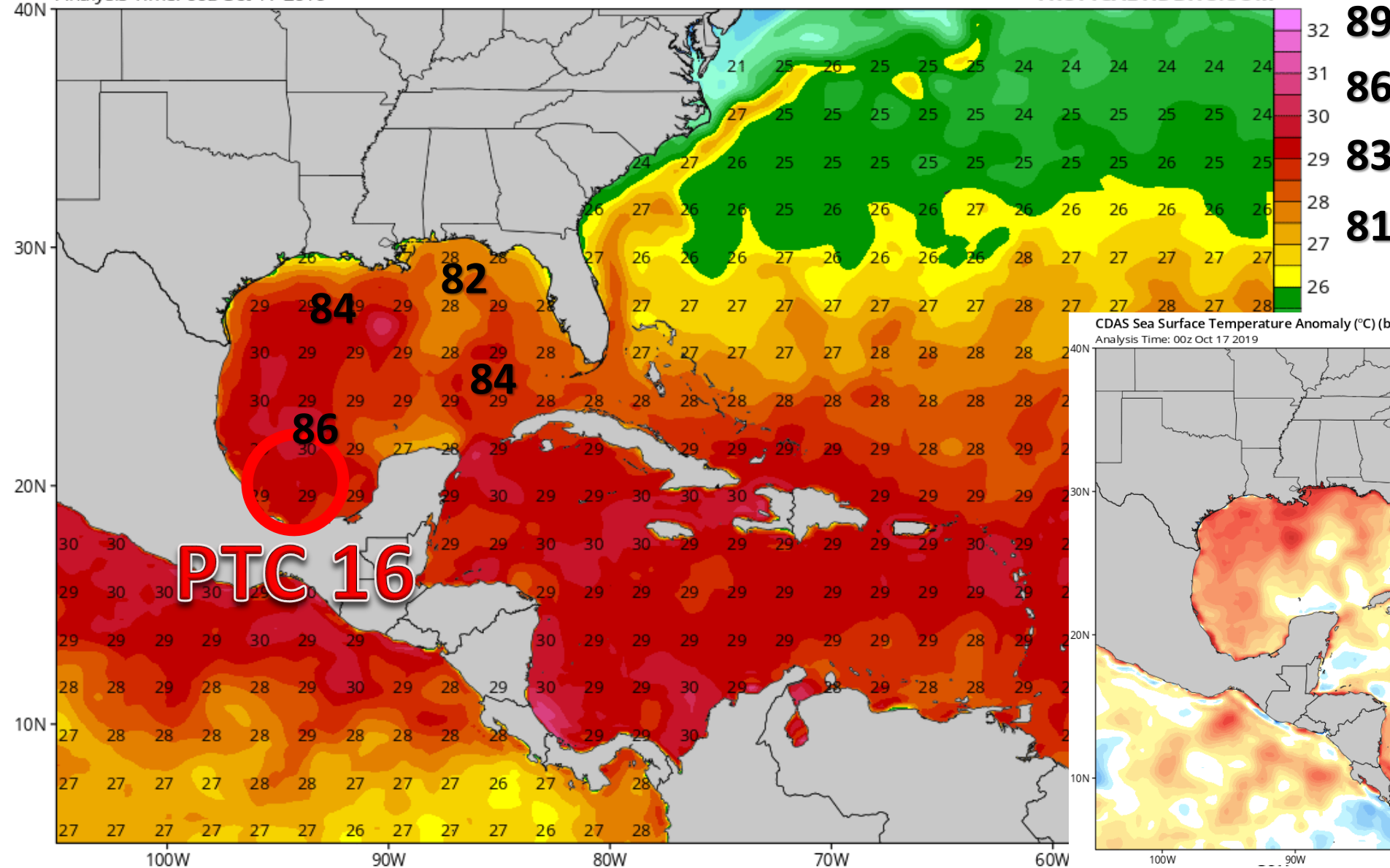


# Western Atlantic Sea Surface Temperatures and Anomalies

CDAS Sea Surface Temperature (°C)

Analysis Time: 00z Oct 17 2019

TROPICALTIDBITS.COM

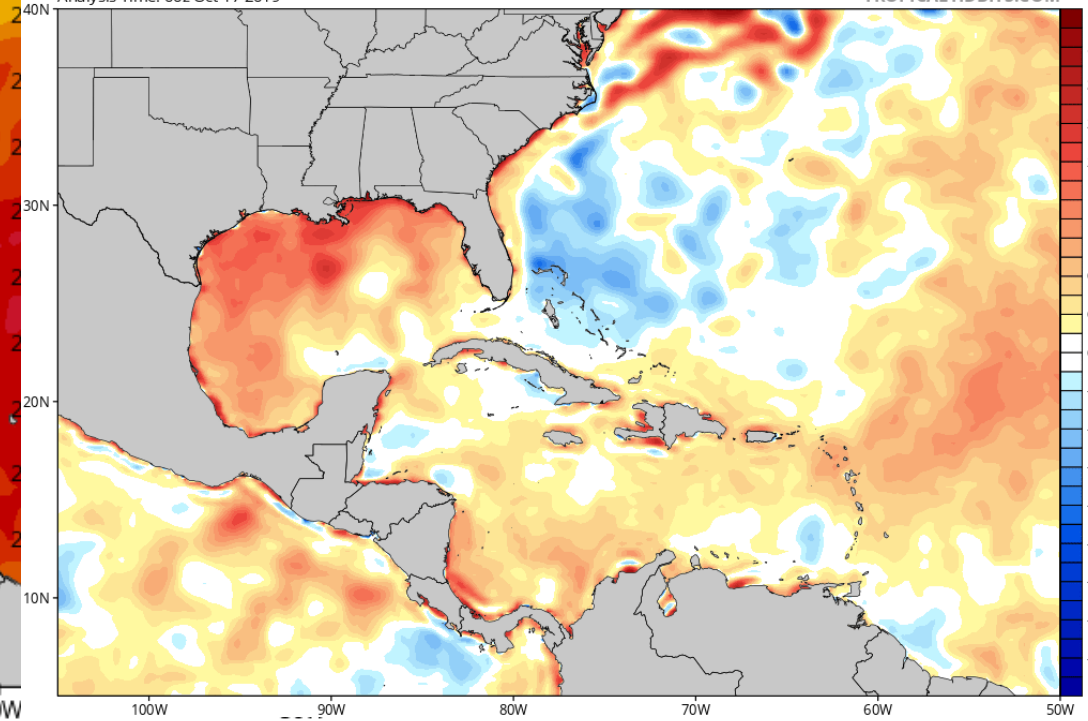


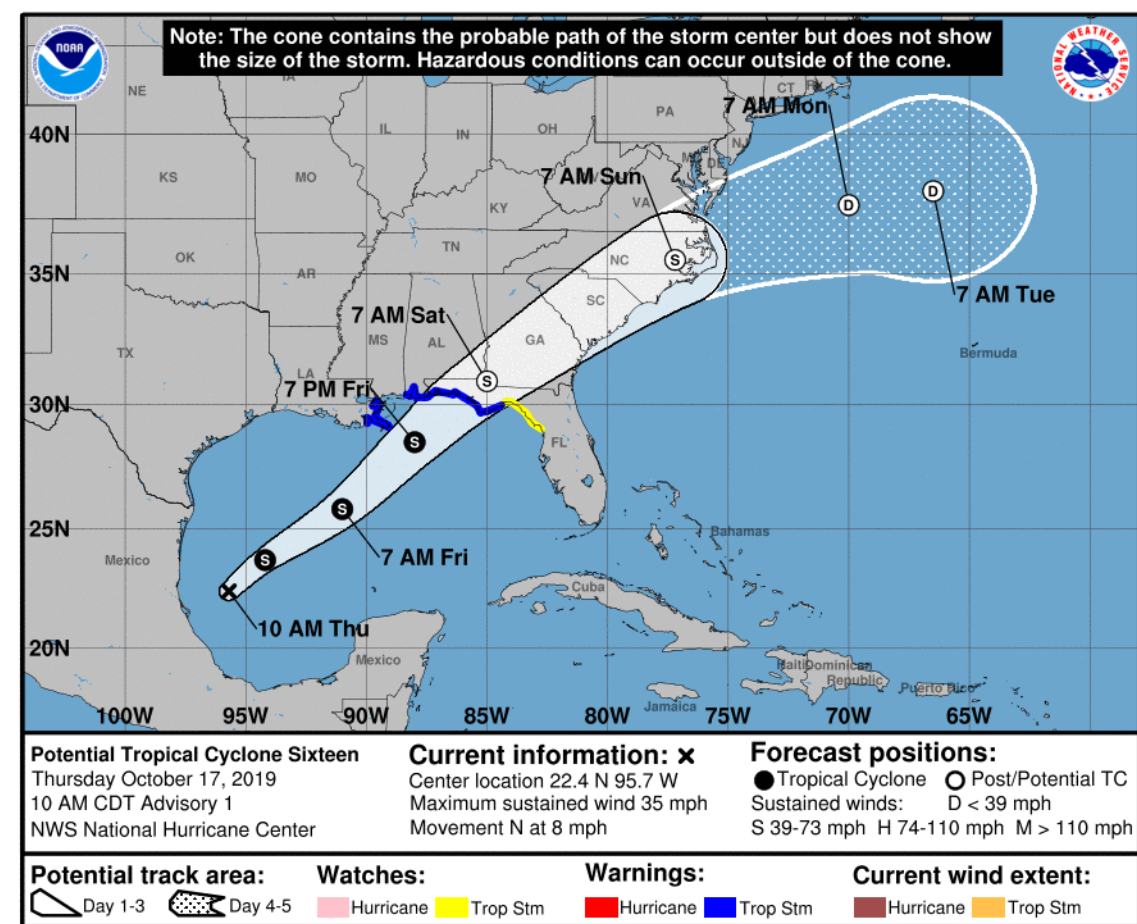
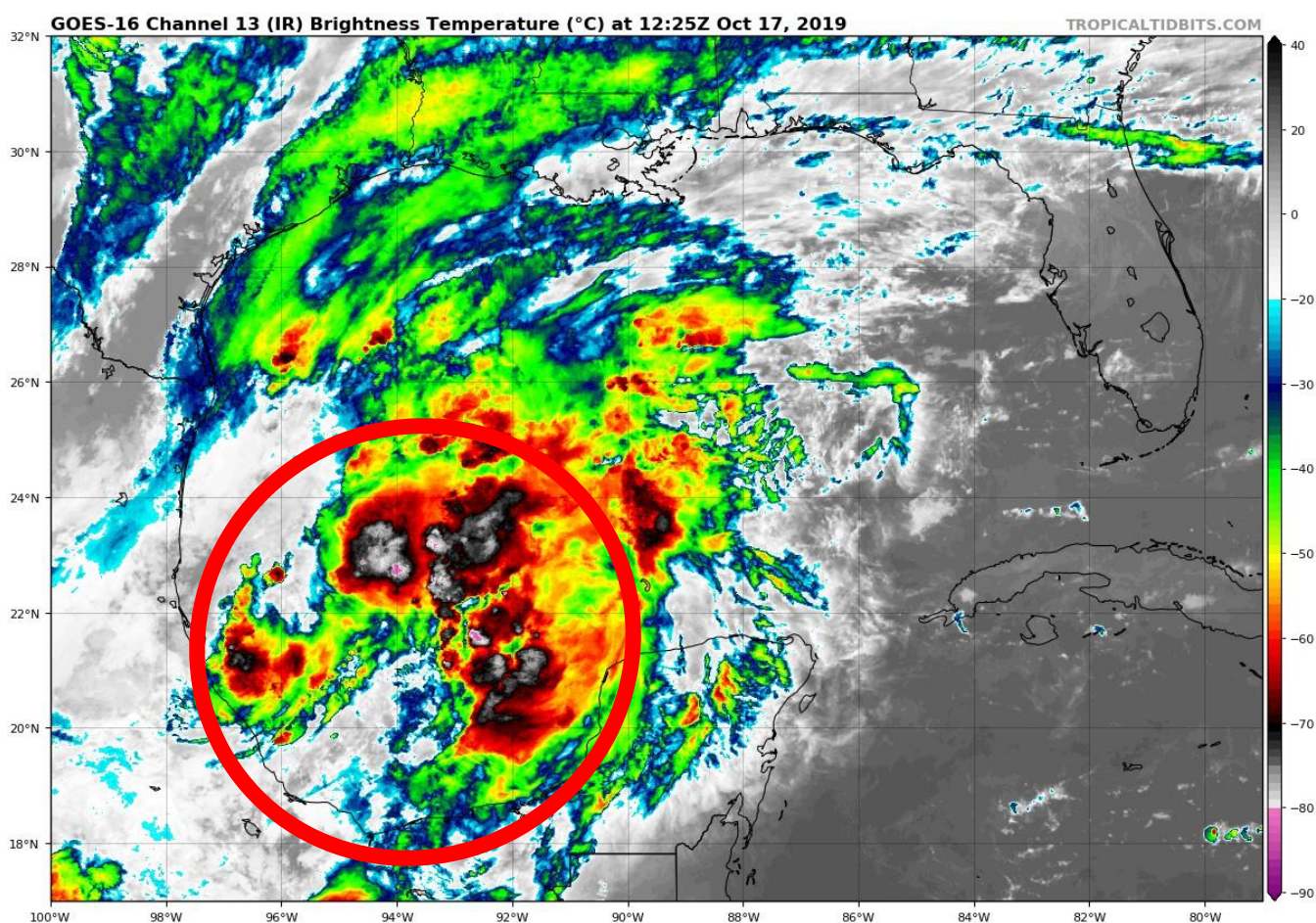
Water temperatures in the Gulf of Mexico and the Caribbean remain warm enough to support tropical development. The water temperatures are above normal for this time of year.

CDAS Sea Surface Temperature Anomaly (°C) (based on CFSR 1981-2010 Climatology)

Analysis Time: 00z Oct 17 2019

TROPICALTIDBITS.COM





**Potential Tropical Cyclone #16:** Showers and thunderstorms associated with a broad area of low pressure located over the southwestern Gulf of Mexico continue to show signs of organization. The storm is forecast to approach the northern or northeastern Gulf Coast on Friday or Saturday and regardless of development, the system is likely to produce gusty winds and rough surf over those areas. Locally heavy rainfall is also possible across portions of the southeast U.S. late this week and this weekend. An Air Force Reserve reconnaissance aircraft is scheduled to investigate the system this afternoon, if necessary. Tropical Storm Watches and Warnings are now in effect for much of the Panhandle, Big Bend, and parts of the Nature Coast. Storm Surge Watches are in effect for the Big Bend and Nature Coast.



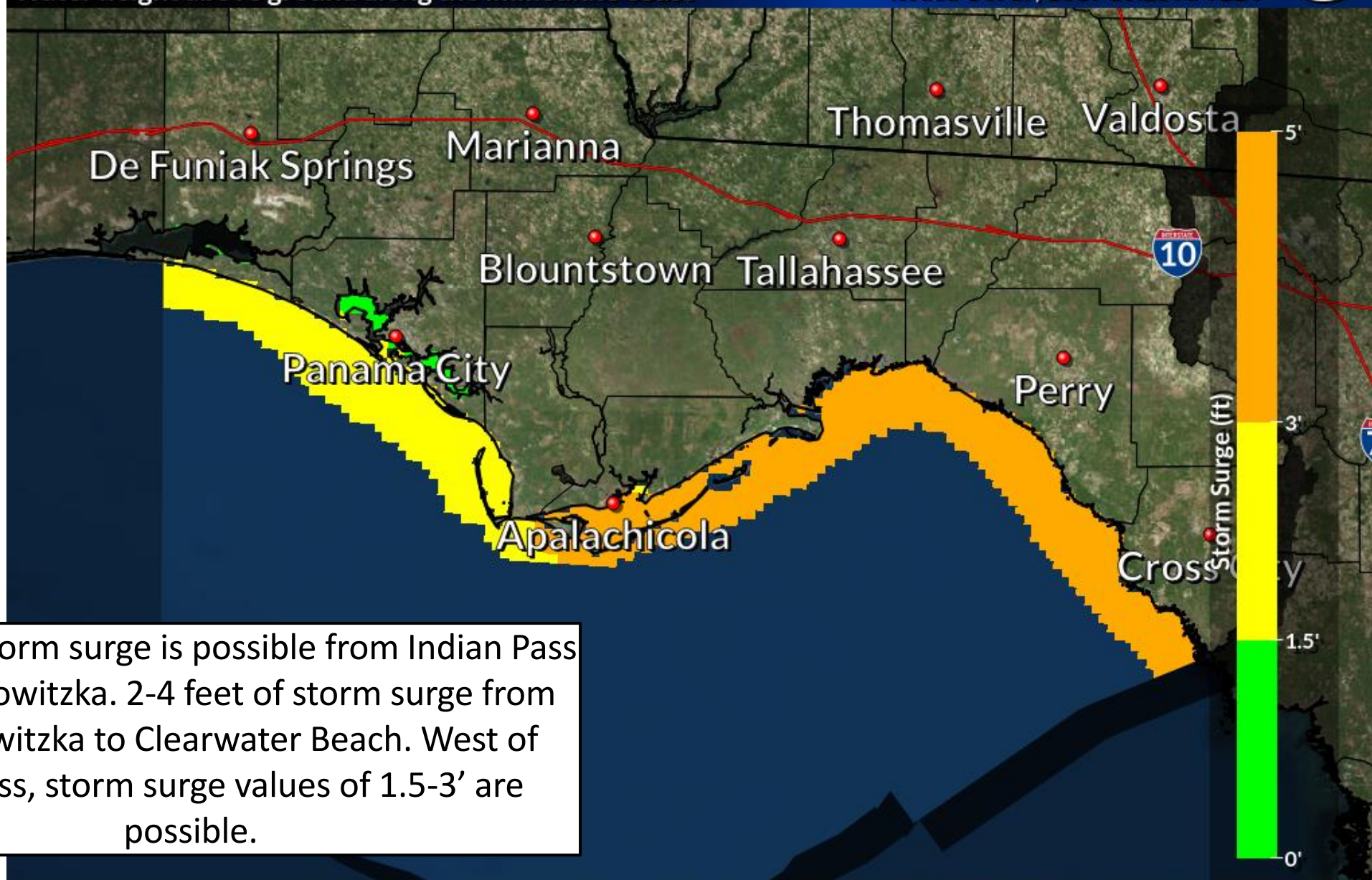
# Peak Storm Surge Values

Water height above ground along the immediate coast

Weather Forecast Office

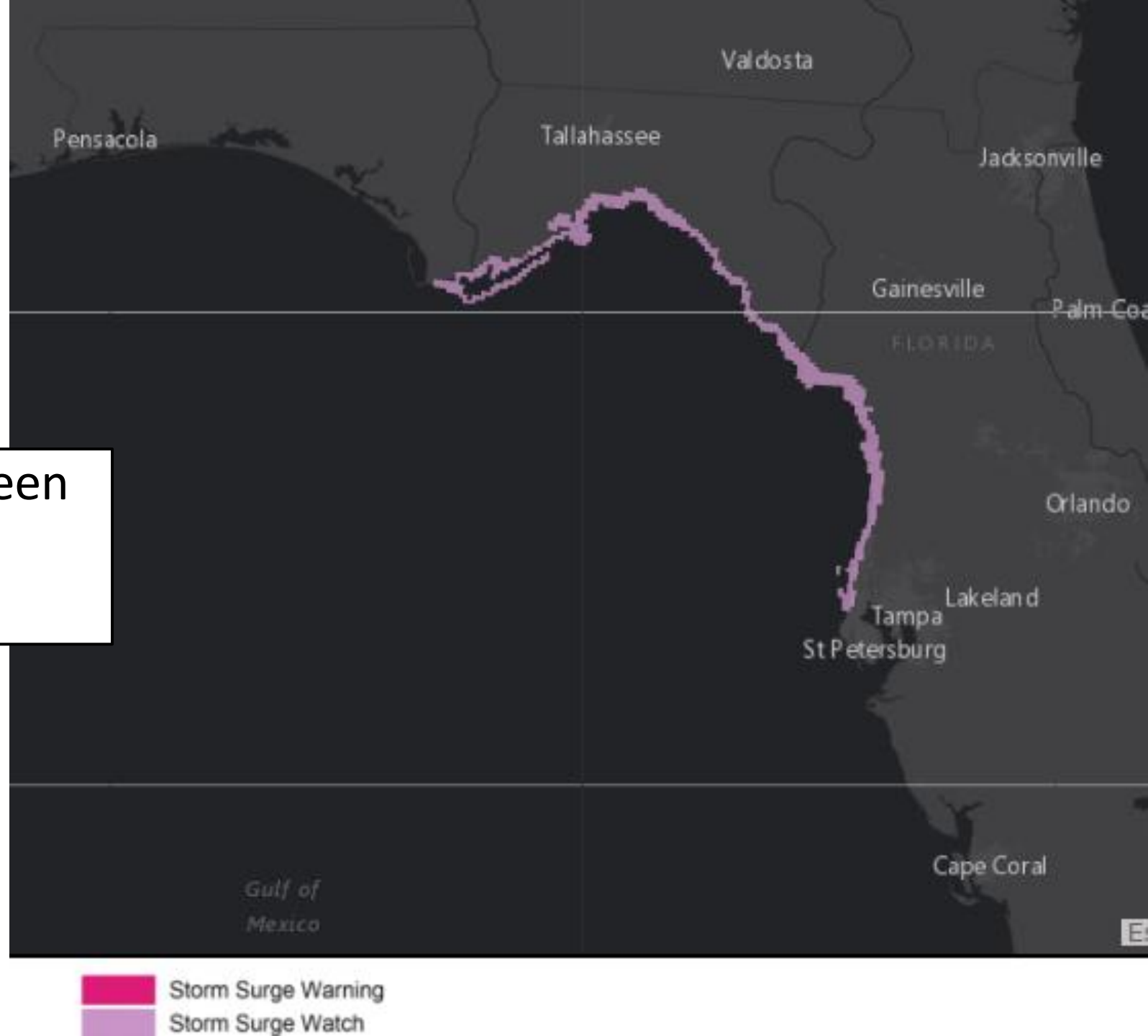
Tallahassee, FL

Issued Oct 17, 2019 10:23 AM EDT



3-5 feet of storm surge is possible from Indian Pass to Chassahowitzka. 2-4 feet of storm surge from Chassahowitzka to Clearwater Beach. West of Indian Pass, storm surge values of 1.5-3' are possible.

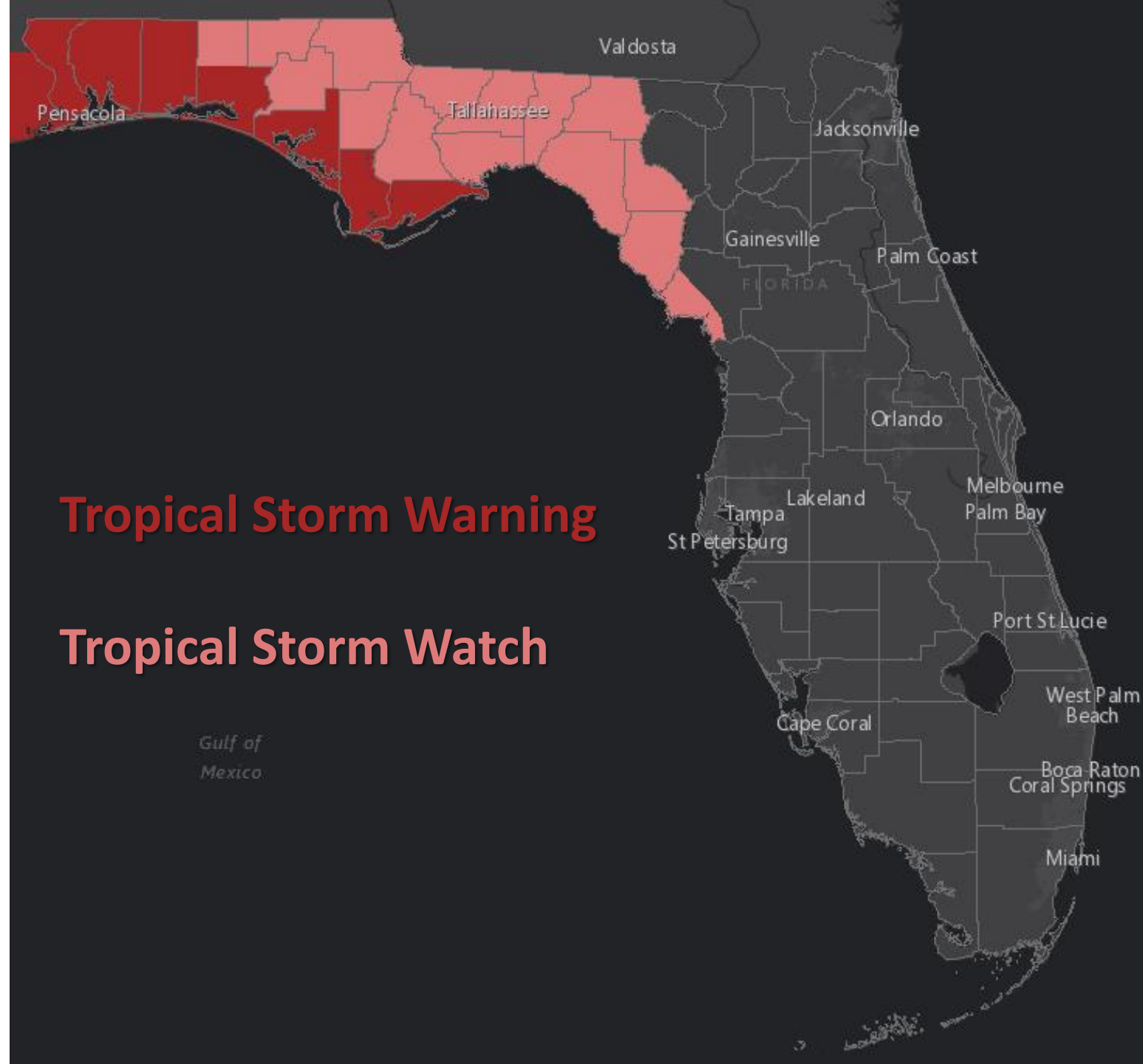
Storm Surge Watches have been issued from Indian Pass to Clearwater Beach.





**Tropical Storm Warning**

**Tropical Storm Watch**

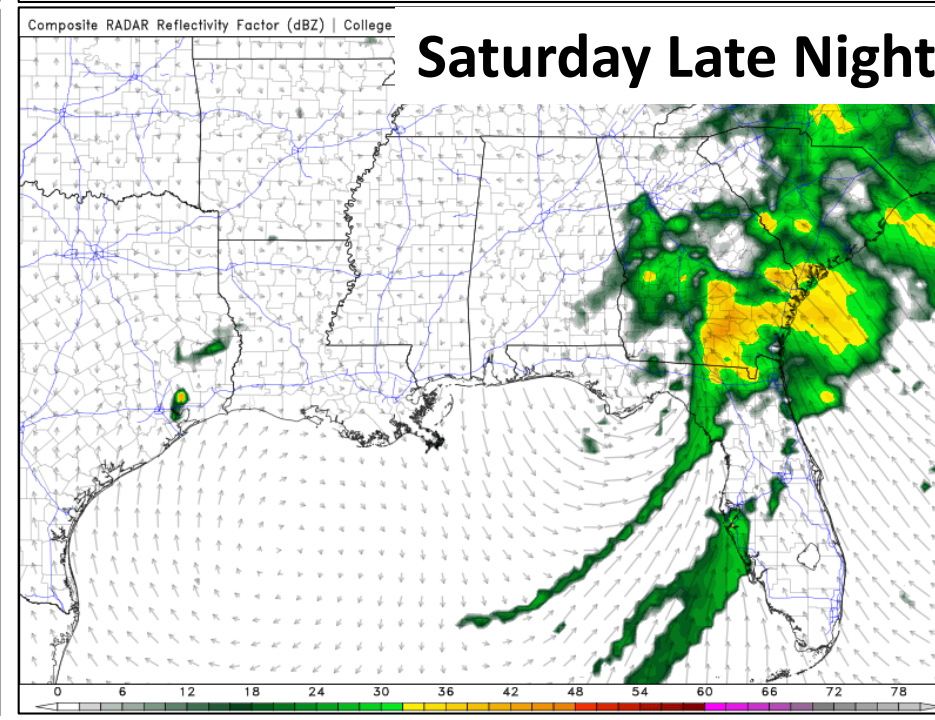
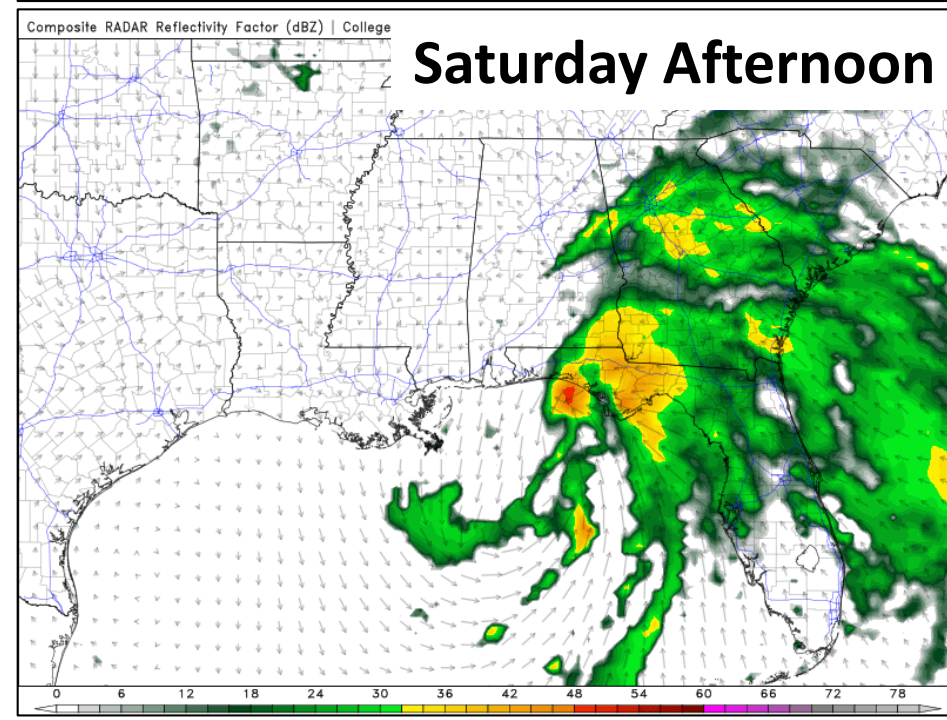
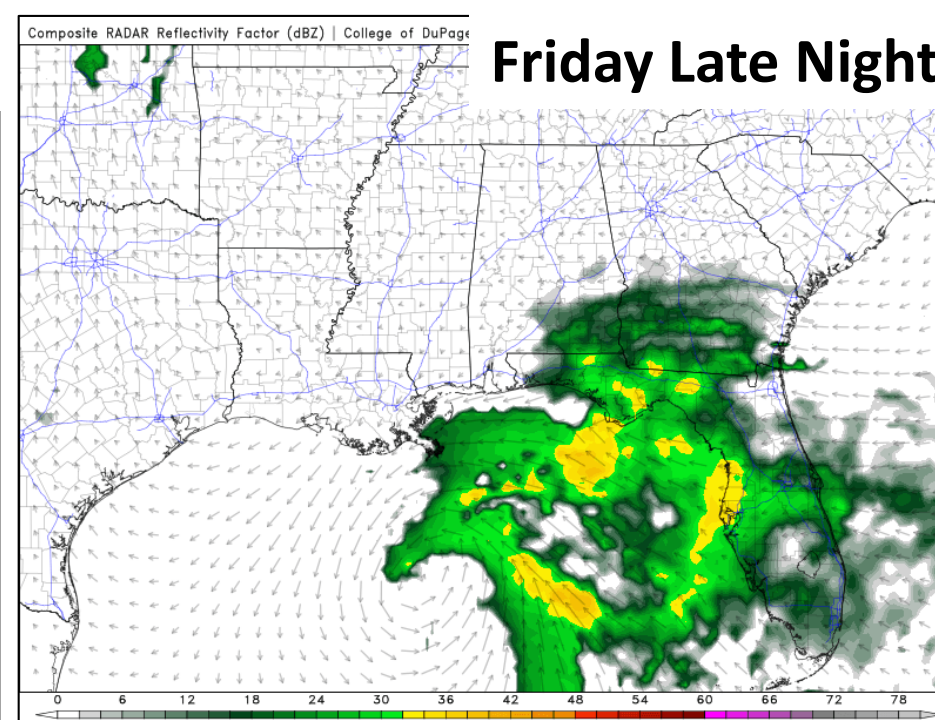
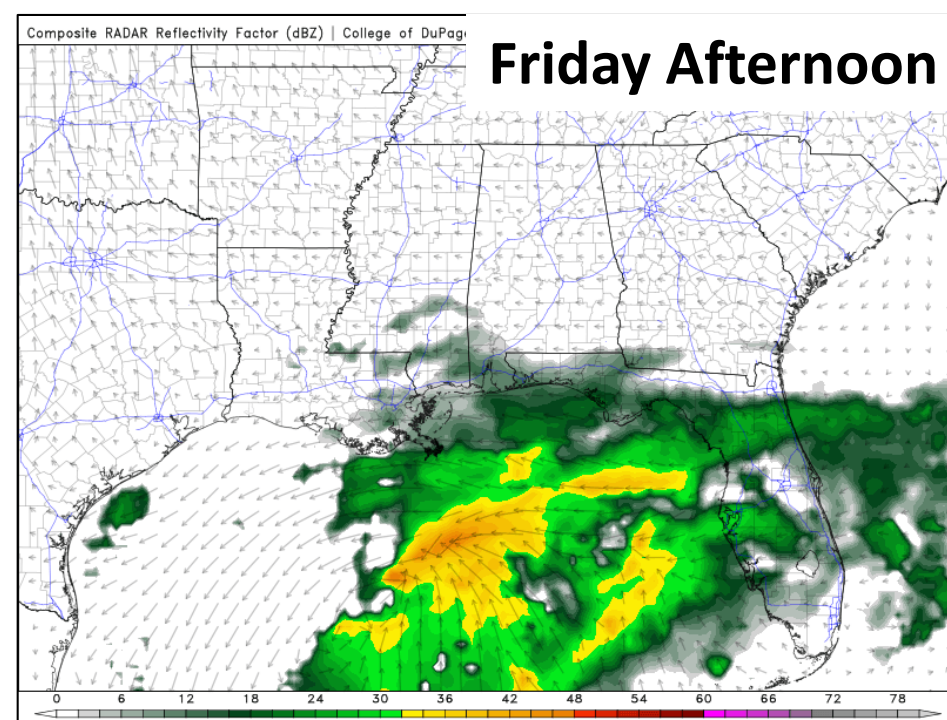






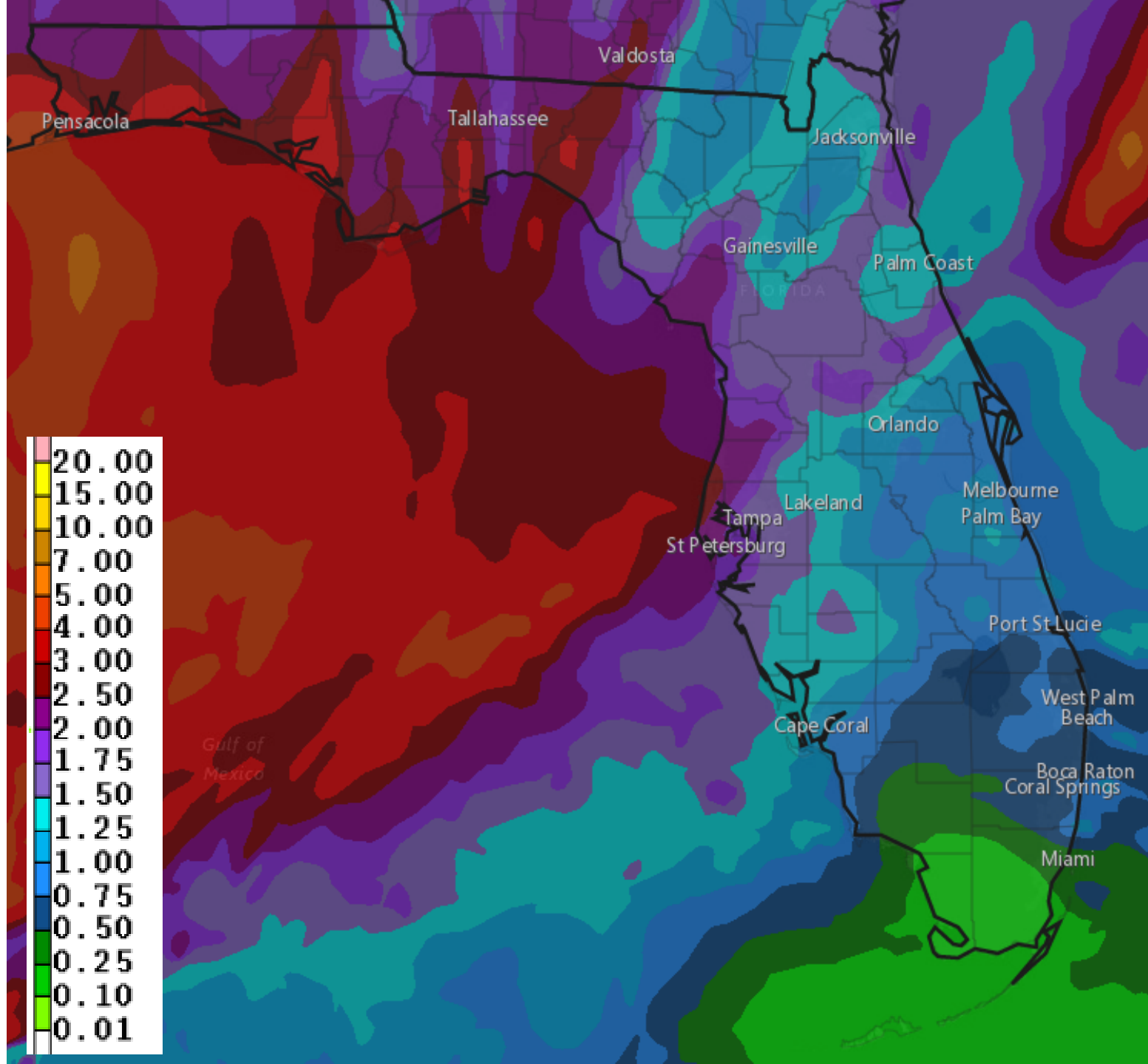
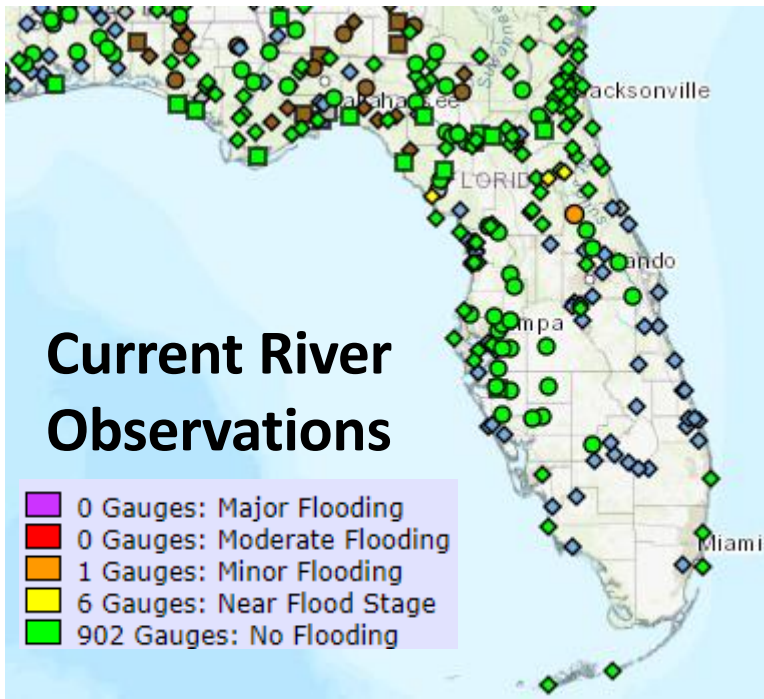
# Model Simulated Radar Friday & Saturday

Showers could begin as early as Friday afternoon along the coast of the Panhandle and West Coast. The rain will overspread North Florida through Friday night into Saturday with more bands of showers and storms over the Peninsula before gradually clearing Saturday night. Most of the showers/storms will be on the north and east sides.



# Forecast Rainfall Totals Next 5 Days

Rainfall totals over the next 5 days are forecast to be 1-3" across North Florida with locally higher amounts of 4-6". Central Florida will see about 1-2". This will not be enough to cause river flooding across the Panhandle as rivers are very low.

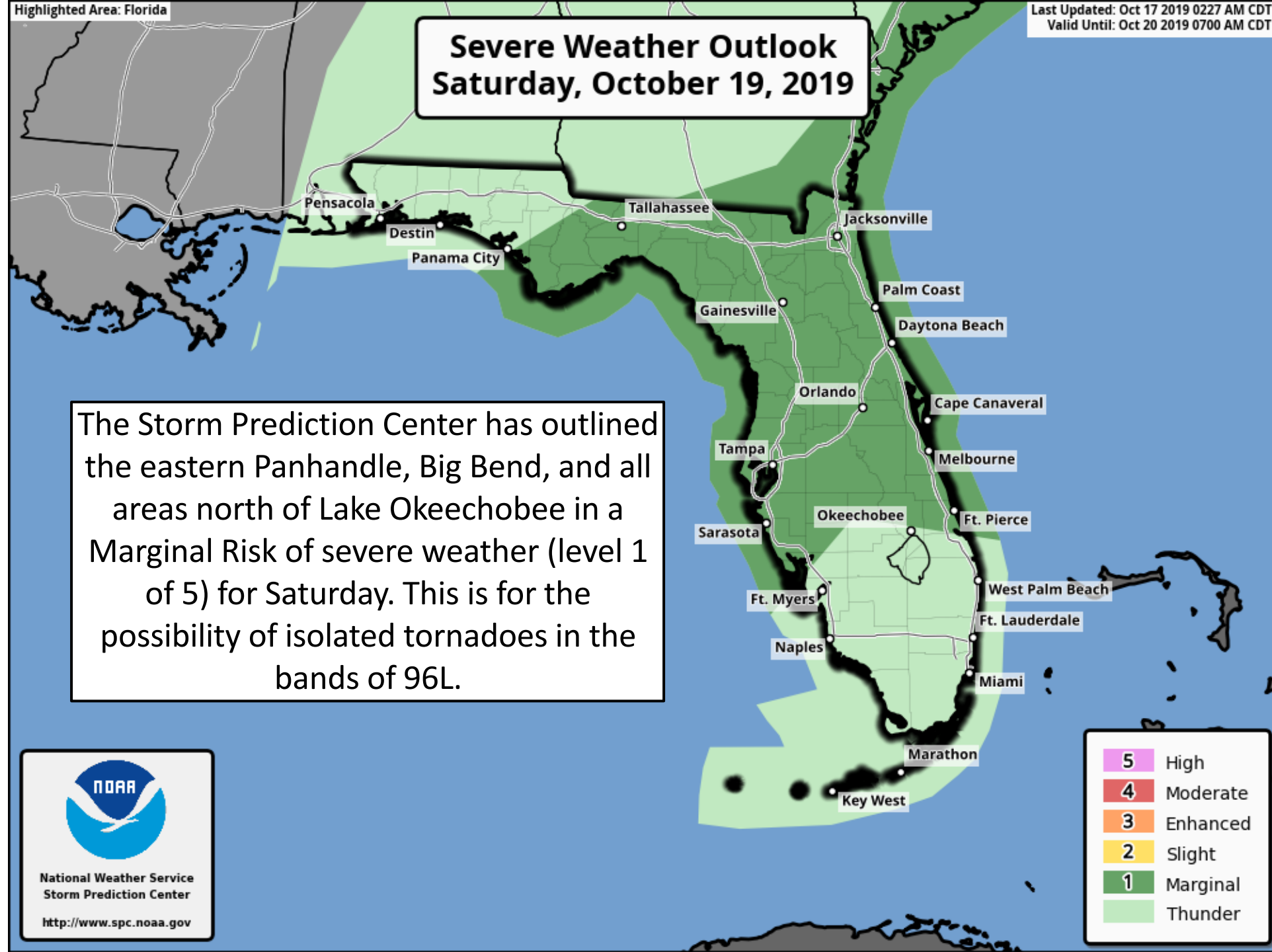


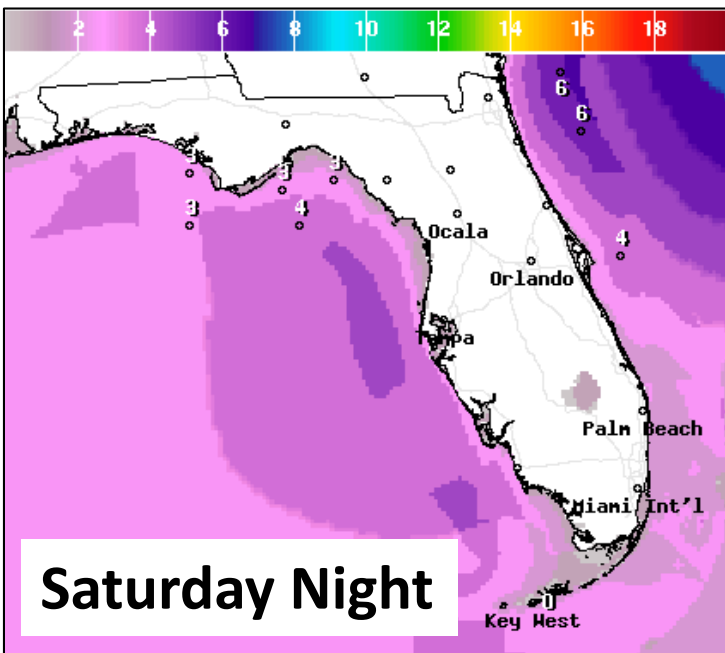
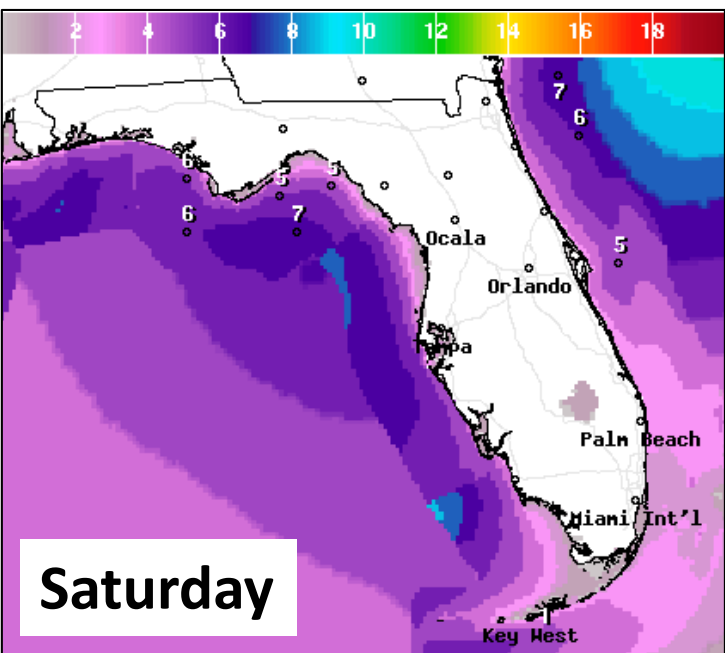
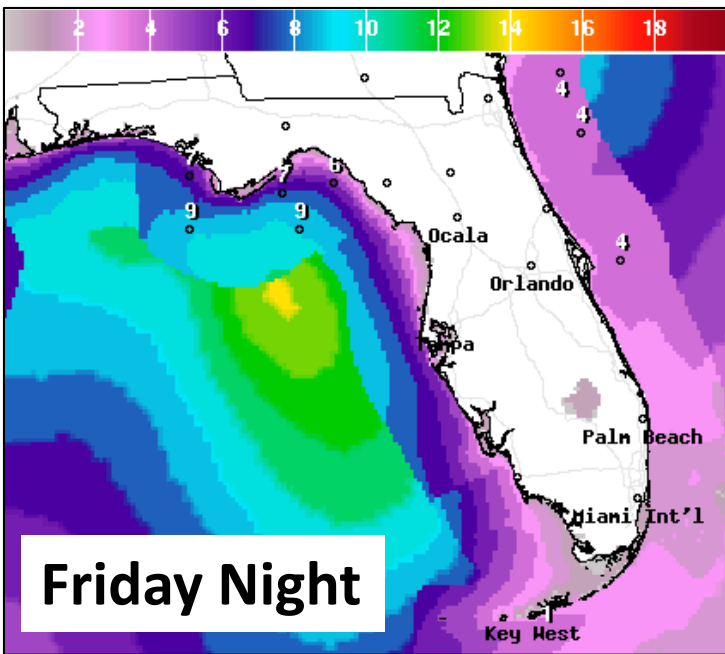
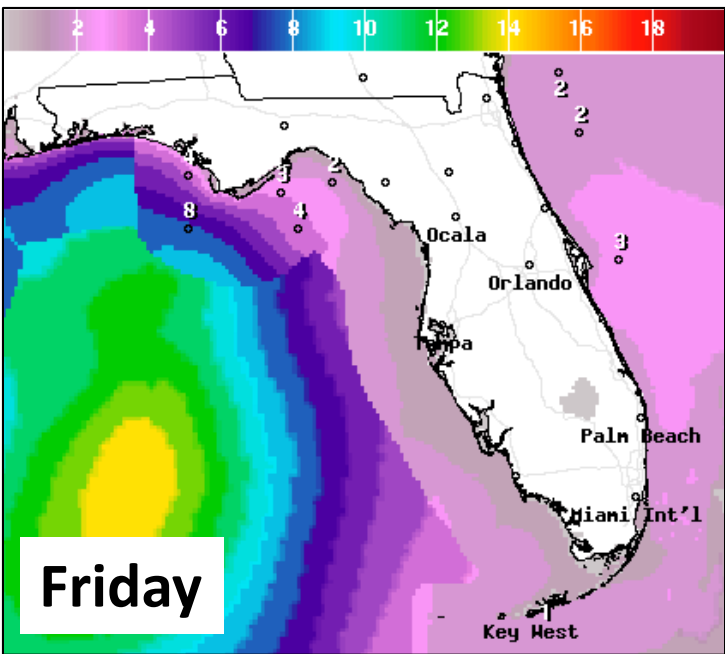


# 1 - MARGINAL (MRGL)

Isolated severe  
thunderstorms  
possible

Limited in duration  
and/or coverage  
and/or intensity





# Forecast Wave Heights Friday & Saturday

Waves will build as PTC #16 approaches the Panhandle. Dangerous rip currents and some beach erosion are likely with these high breaking waves through at least Saturday.



# After PTC #16 Passes...

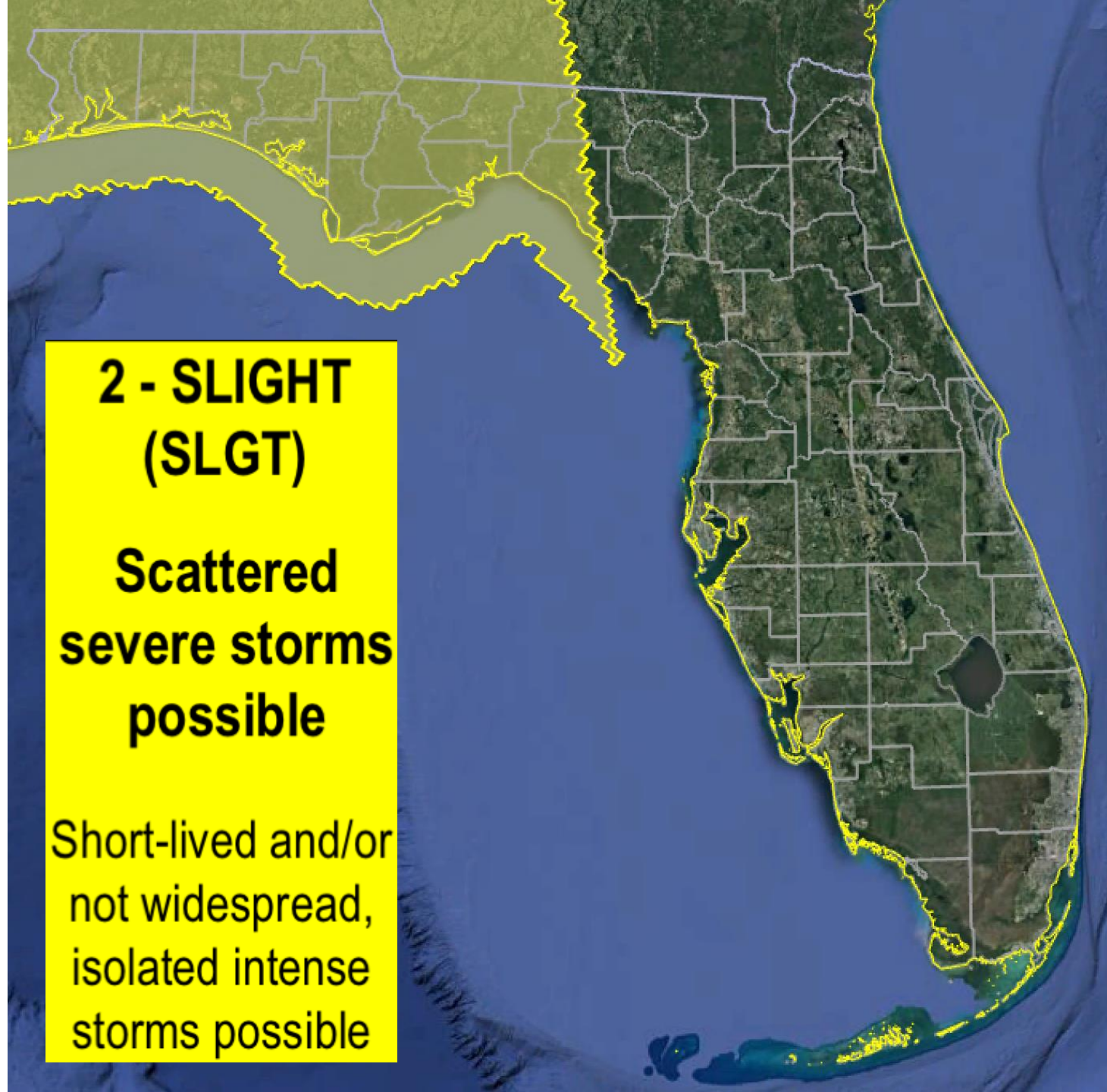
## Severe Weather Risk for Monday

A strong cold front will move in on Monday, which will bring the threat of strong to severe thunderstorms to the Panhandle and Big Bend on Monday. The Storm Prediction Center has outlined all the Panhandle and Big Bend in a Slight Risk of severe weather (level 2 of 5). Since this is 5 days out, details are still being worked out. Damaging winds, large hail, and isolated tornadoes currently remain possible on Monday.

**2 - SLIGHT  
(SLGT)**

**Scattered  
severe storms  
possible**

Short-lived and/or  
not widespread,  
isolated intense  
storms possible



# Summary

## **Potential Tropical Cyclone #16**

- The National Hurricane Center has initiated advisories on Potential Tropical Cyclone #16.
- Maximum sustained winds are near 35 mph, and further strengthening to a tropical or subtropical storm is forecast.
- Currently, PTC #16 is moving toward the north at 8 mph, and a northeastward motion at a faster motion is expected Friday and Saturday.
- Landfall is likely Saturday morning in the Florida Panhandle with impacts across North and Central Florida and the Southeast U.S.
- As the system interacts with a cold front, rain will spread northward over the central and eastern Gulf Coast.
- The next name on the list is Nestor (NES-tor).

## **Florida Outlook:**

- Tropical Storm Warnings are in effect for Escambia, Santa Rosa, Okaloosa, coastal Walton, Bay, Gulf, and Franklin Counties.
- Tropical Storm Watches are in effect for north and central Walton, Holmes, Washington, Jackson, Calhoun, Gadsden, Liberty, Leon, Wakulla, Jefferson, Madison, Taylor, Dixie, Lafayette, and Levy.
- Storm Surge Watches are in effect from Indian Pass to Clearwater Beach.
- Rain may begin as early as Friday afternoon across North and West Central Florida and overspread all of North Florida through the night.
- The main rain and wind impacts will be Friday night through Saturday afternoon.
- Rainfall totals of 1-3" with localized higher amounts of 4-6" are possible in North Florida with totals of 1-2" in Central Florida.
- There is a Marginal Risk of severe weather for the eastern Panhandle, Big Bend, and the Peninsula north of Lake Okeechobee for Saturday. Isolated tornadoes will be possible in the bands of PTC #16.
- Waves will begin to build tonight and especially on Friday into Saturday as PTC #16 approaches. Dangerous rip currents and some beach erosion are likely along the Panhandle and West Coast.
- Storm surge of 3-5' is possible from Indian Pass to Chassahowitzka and 2-4' is possible from Chassahowitzka to Clearwater Beach.

The next tropics packet will be issued this afternoon. For the latest information on the tropics, please visit the National Hurricane Center website at [www.hurricanes.gov](http://www.hurricanes.gov).





# TROPICAL UPDATE



Created by:

Cameron Young, Assistant State Meteorologist

[Cameron.Young@em.myflorida.com](mailto:Cameron.Young@em.myflorida.com)

State Meteorological Support Unit

Florida Division of Emergency Management

Users wishing to subscribe (approval pending) to this distribution list, register at:

[https://public.govdelivery.com/accounts/FLDEM/subscriber/new?topic\\_id=SERT\\_Met\\_Tropics](https://public.govdelivery.com/accounts/FLDEM/subscriber/new?topic_id=SERT_Met_Tropics).

Other reports available for subscription are available at:

<https://public.govdelivery.com/accounts/FLDEM/subscriber/new?preferences=true>