



TROPICAL UPDATE



10 AM EDT

Tuesday, October 15, 2019

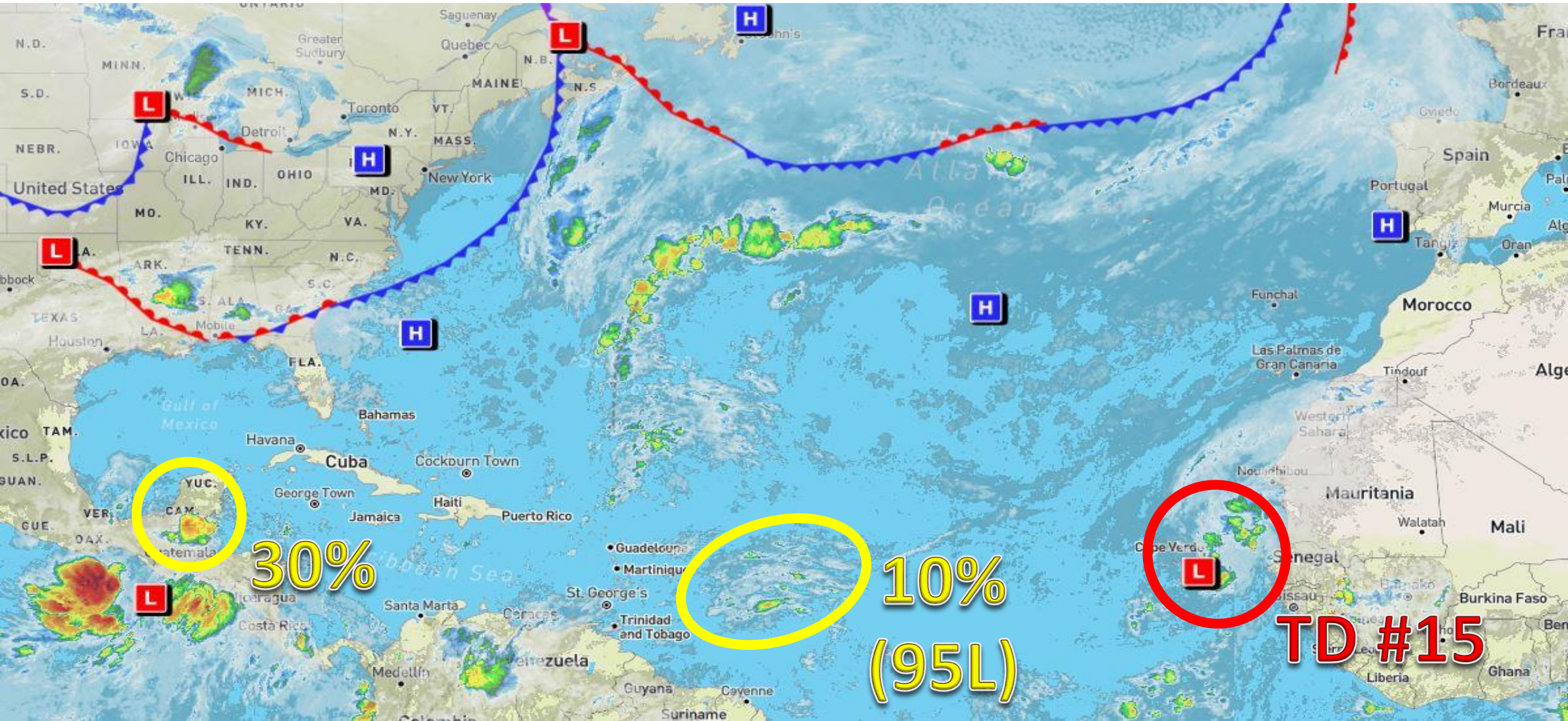
Tropical Depression Fifteen,

Invest 95L (20%), and Yucatan Low (30%)

This update is intended for government and emergency response officials, and is provided for informational and situational awareness purposes only. Forecast conditions are subject to change based on a variety of environmental factors. For additional information, or for any life safety concerns with an active weather event please contact your County Emergency Management or Public Safety Office, local National Weather Service forecast office, or visit the National Hurricane Center website at www.hurricanes.gov.

Atlantic Basin Satellite Image

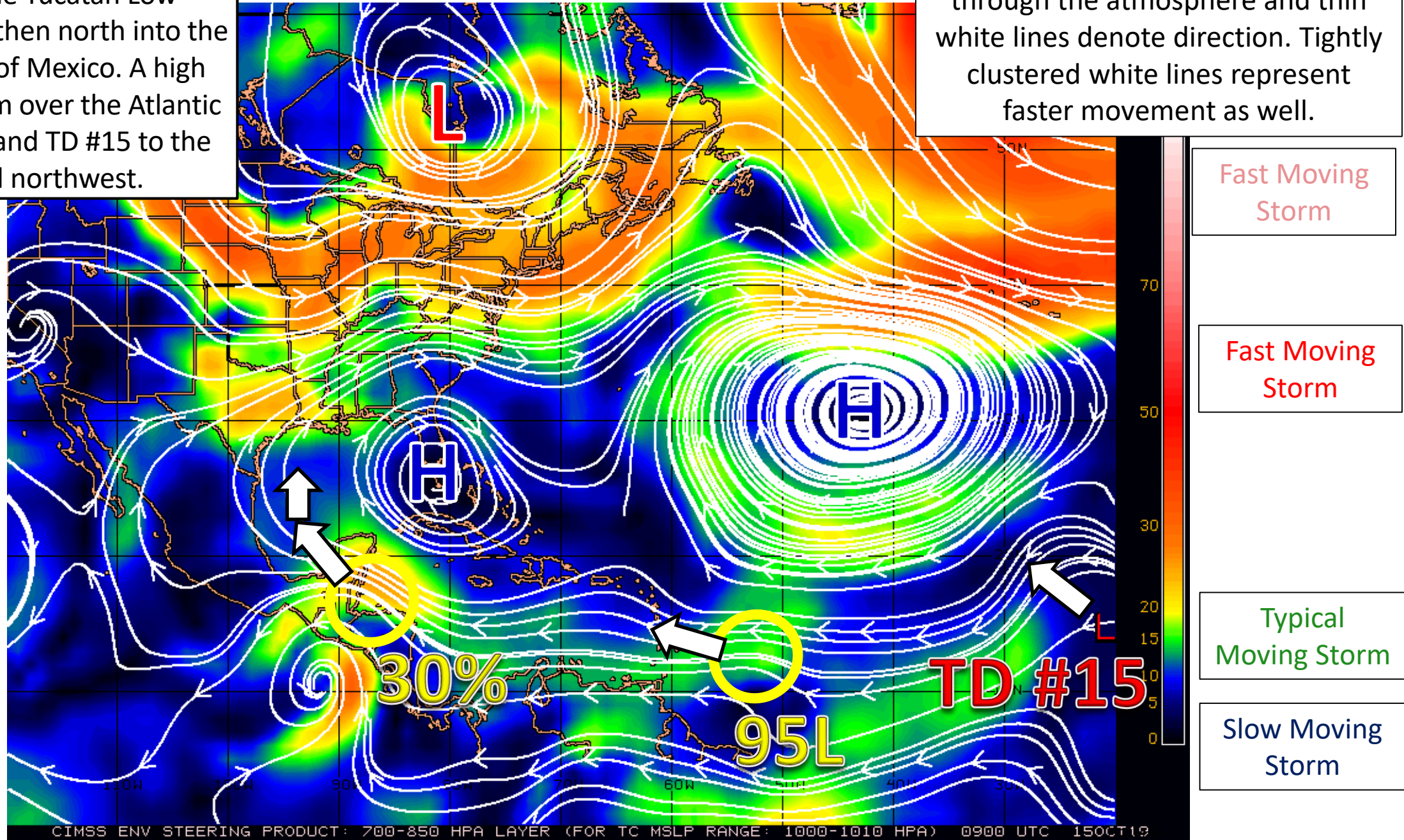
Chance of development: — None — Low — Medium — High



Steering Currents

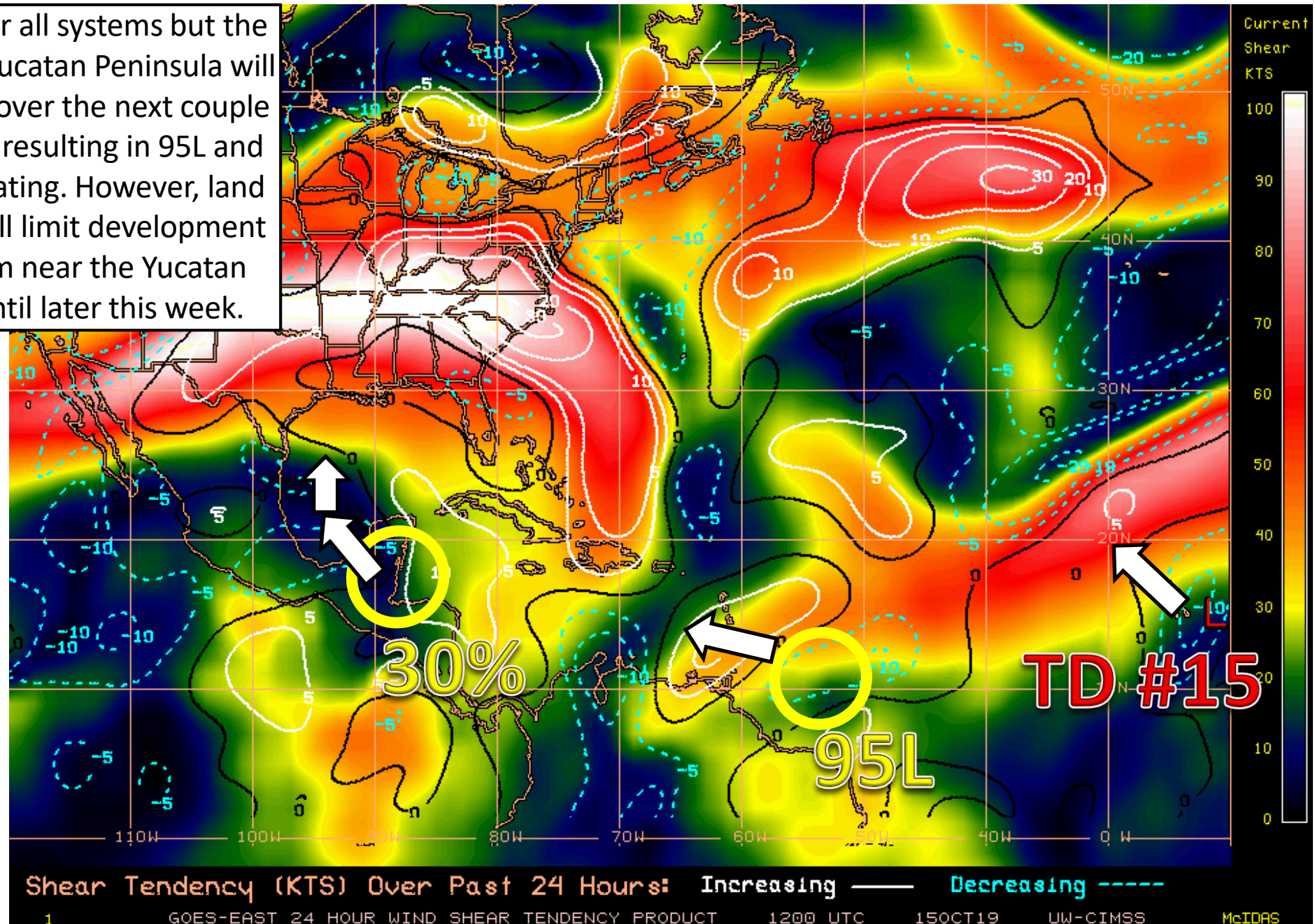
A high pressure system over Florida will steer the Yucatan Low northwest and then north into the western Gulf of Mexico. A high pressure system over the Atlantic will steer 95L and TD #15 to the west and northwest.

Color denotes the movement speed through the atmosphere and thin white lines denote direction. Tightly clustered white lines represent faster movement as well.

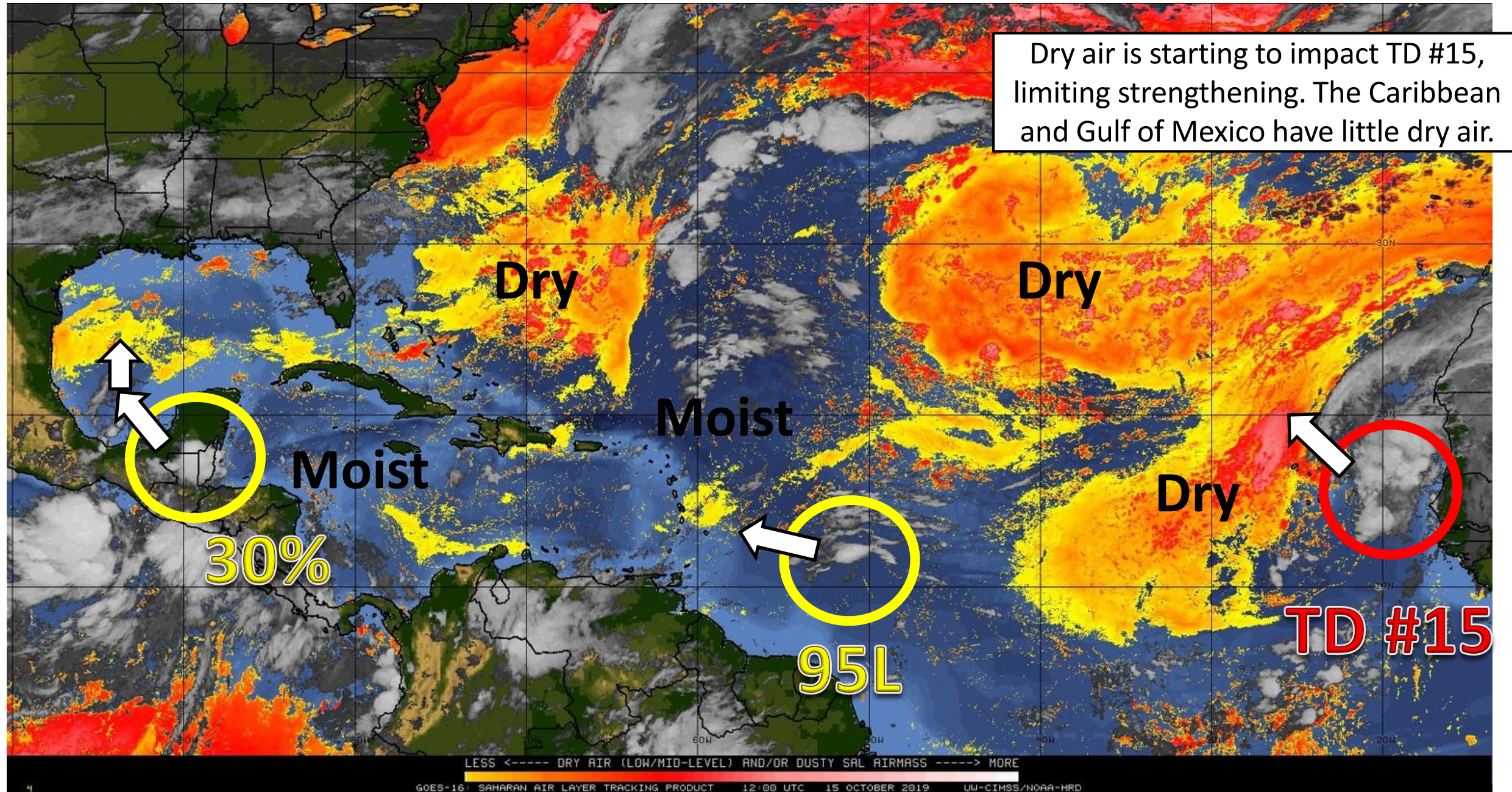


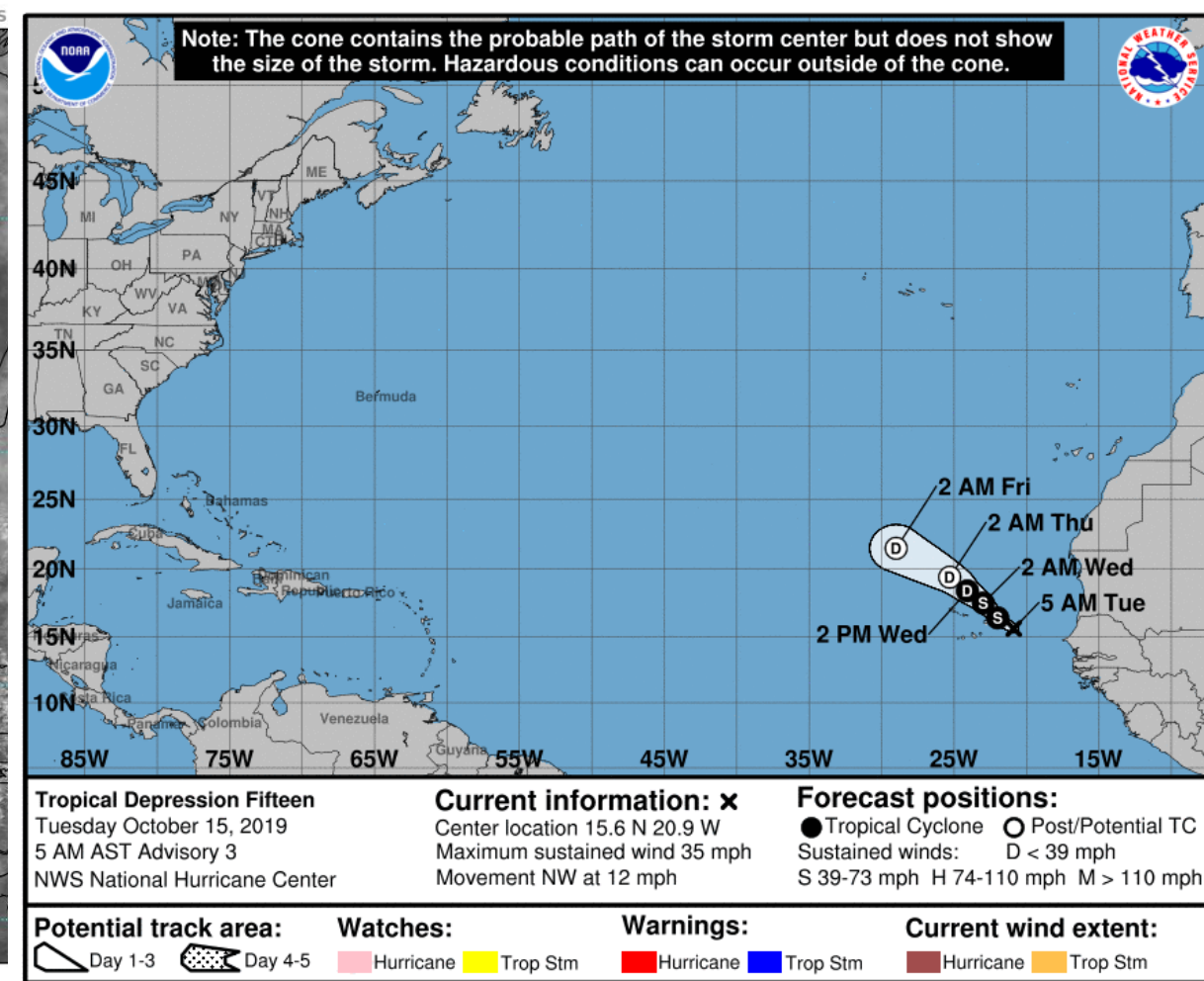
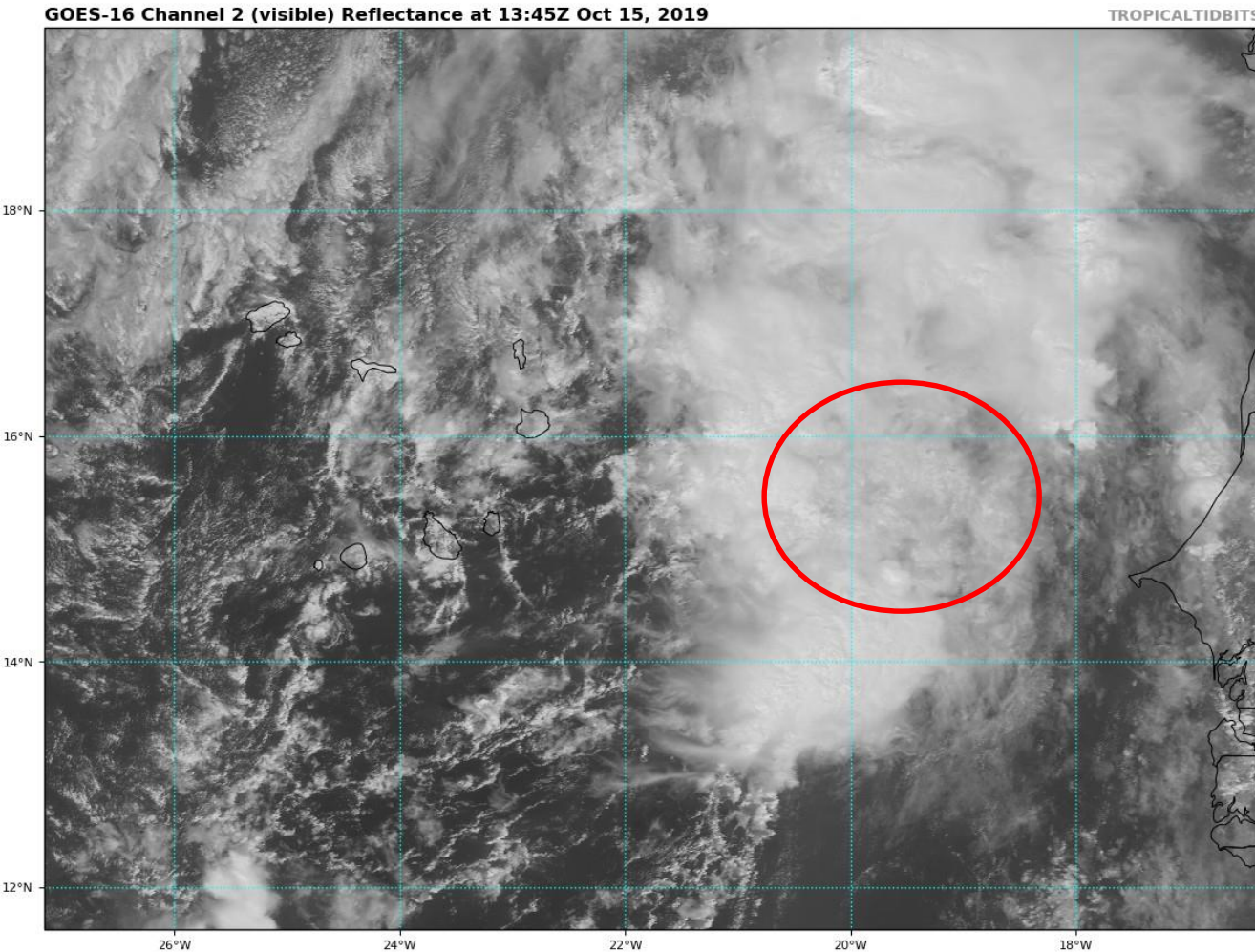
Wind Shear (shaded) and Wind Shear Tendencies (contoured)

Wind shear for all systems but the low near the Yucatan Peninsula will be increasing over the next couple of days, likely resulting in 95L and TD #15 dissipating. However, land interaction will limit development of the system near the Yucatan Peninsula until later this week.



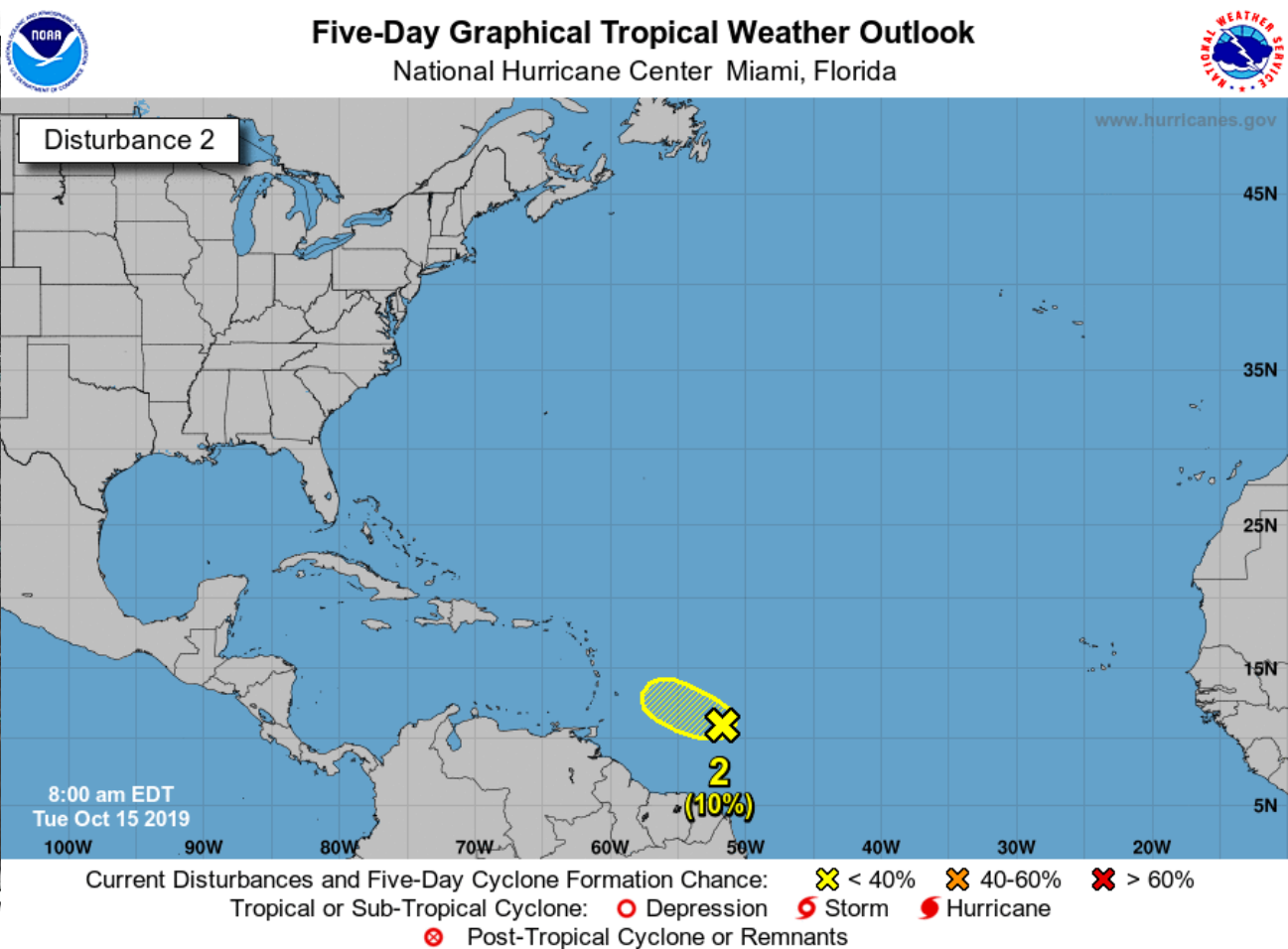
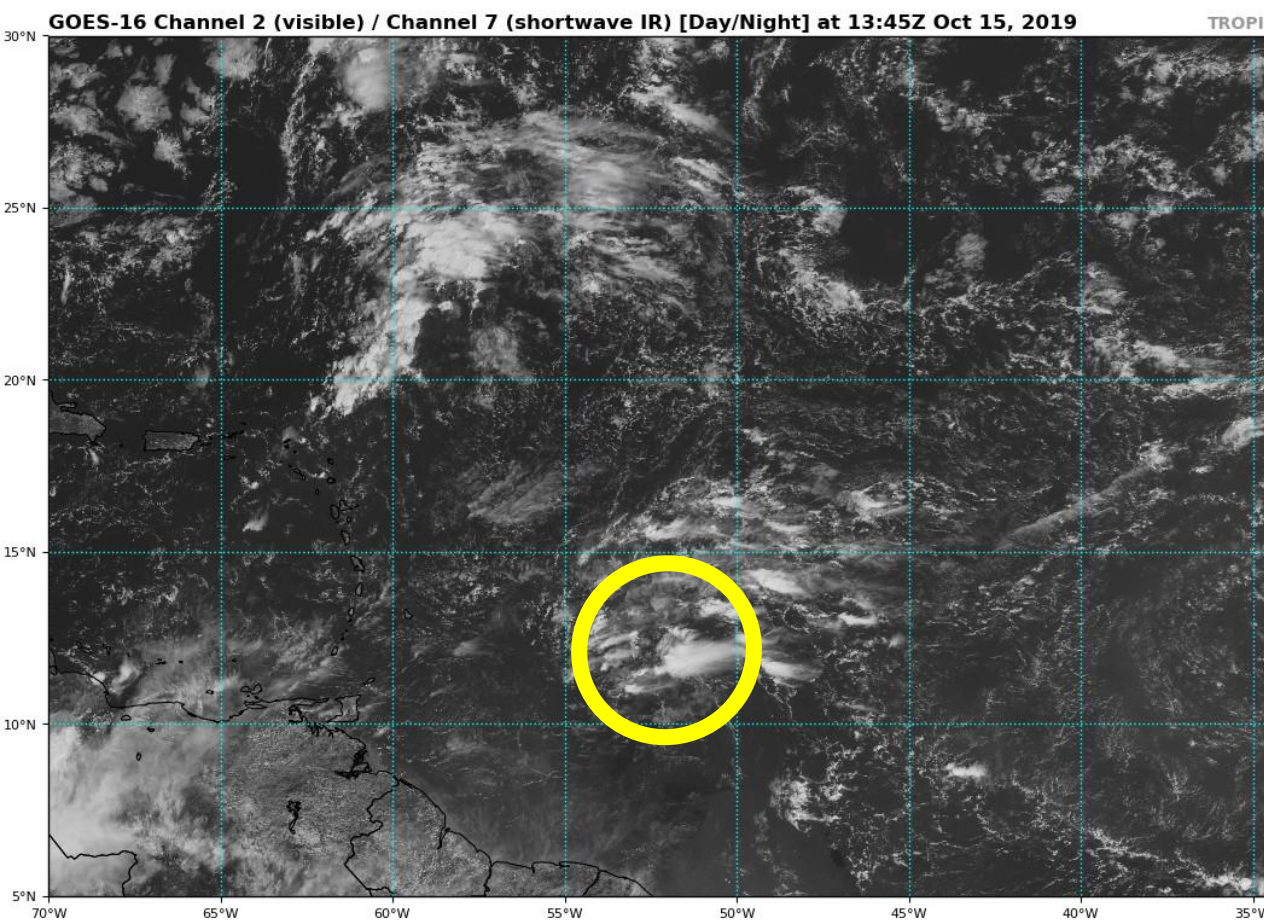
Dry Air & Saharan Dust





Tropical Depression Fifteen: Fifteen is poorly organized, with maximum sustained winds only at 35 mph. Tropical Depression Fifteen is located about 210 miles east of the Cabo Verde Islands and is moving to the northwest at 12 mph. Fifteen still have about 24 hours left to strengthen into Tropical Storm Nestor before dry air and high wind shear will cause the system to dissipate in the far eastern Atlantic.

This system poses no threat to Florida.

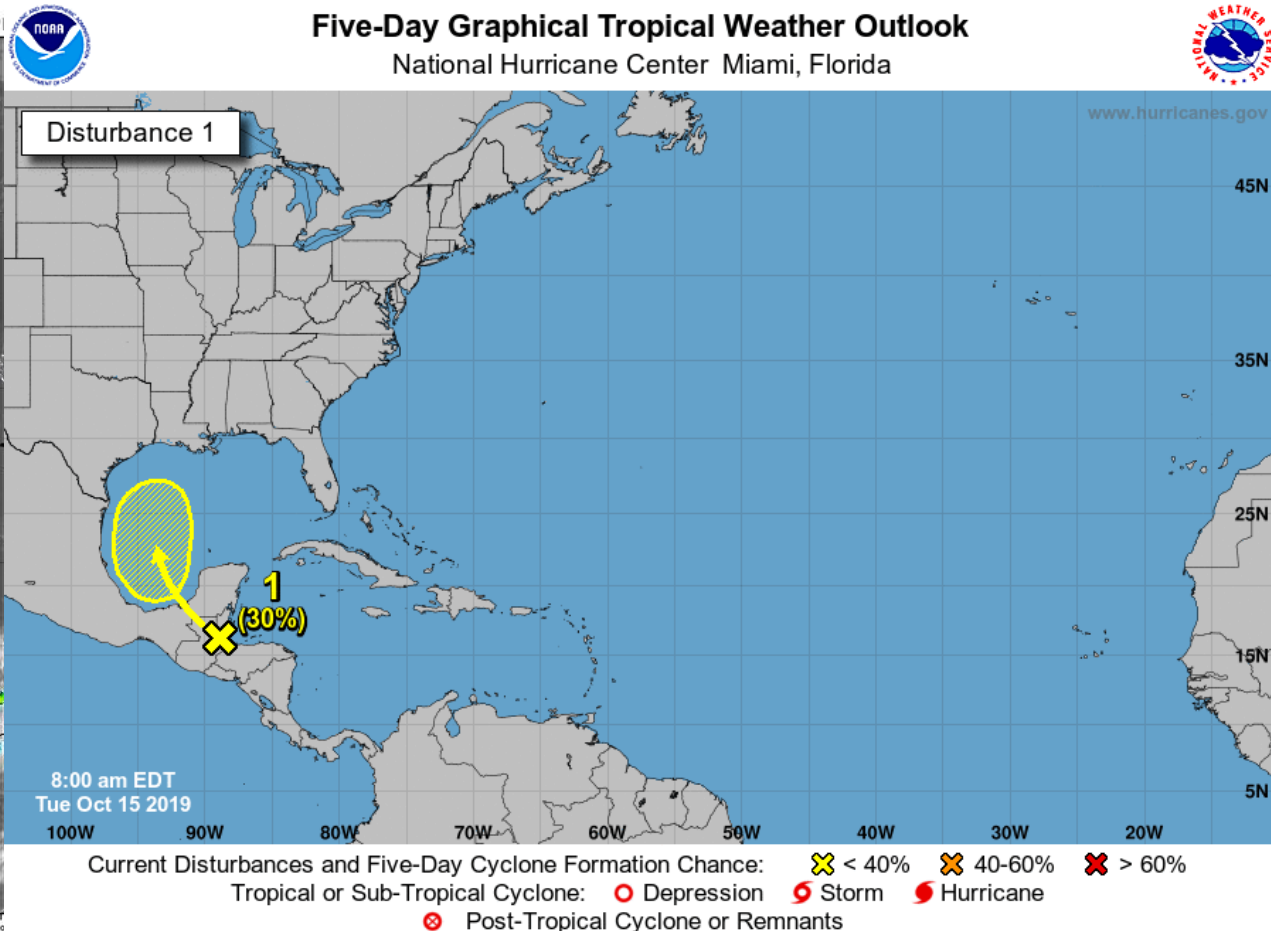
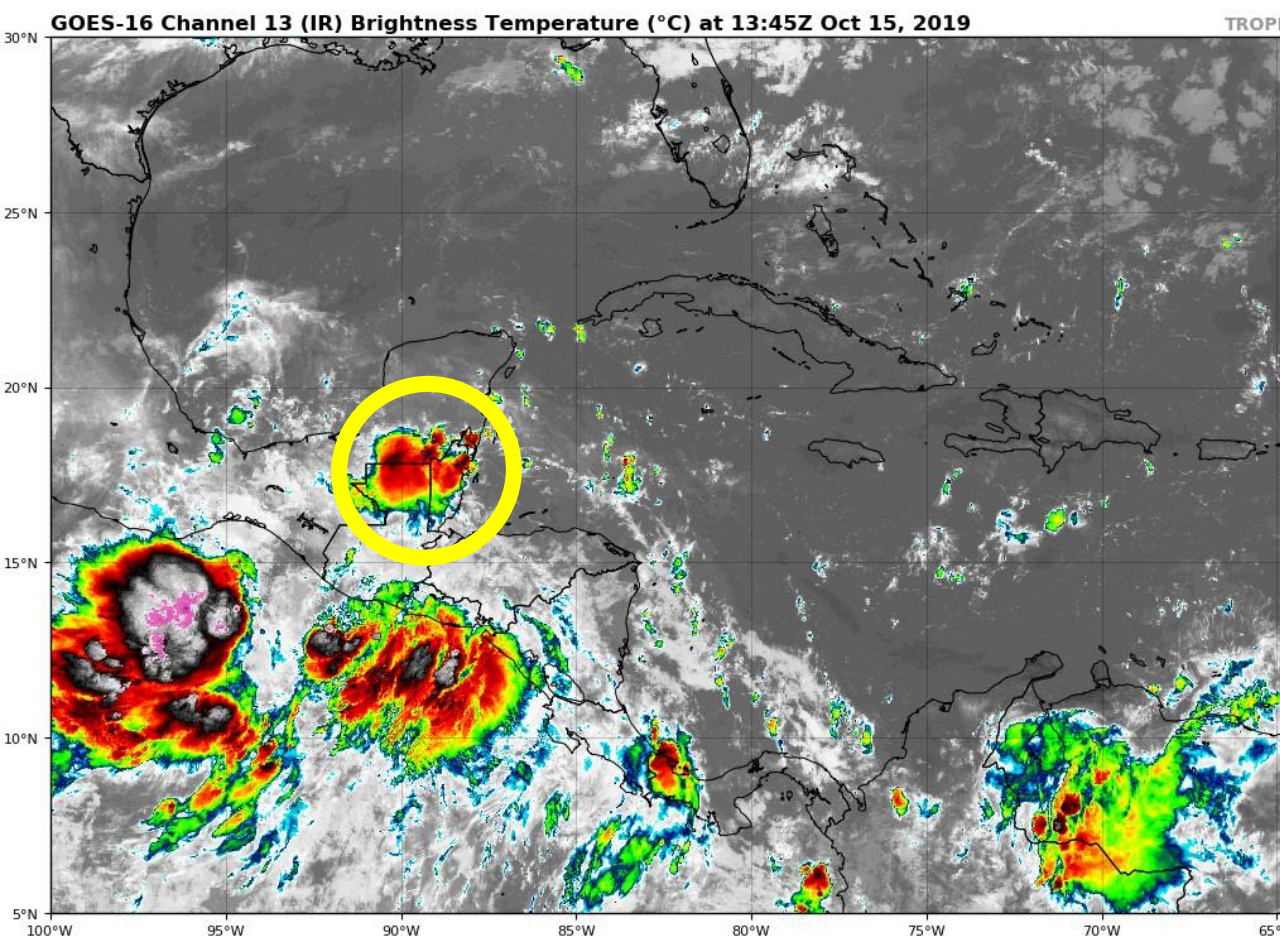


Invest 95L: A tropical wave located more than 500 miles east of the southern Windward Islands is producing limited showers and thunderstorms this morning. Upper-level winds are expected to become increasingly hostile over the system, and significant development of this system appears unlikely while the disturbance moves westward at 15 to 20 mph.

* Formation chance through 48 hours...low...10 percent.

* Formation chance through 5 days...low...10 percent.

This system poses no threat to Florida.

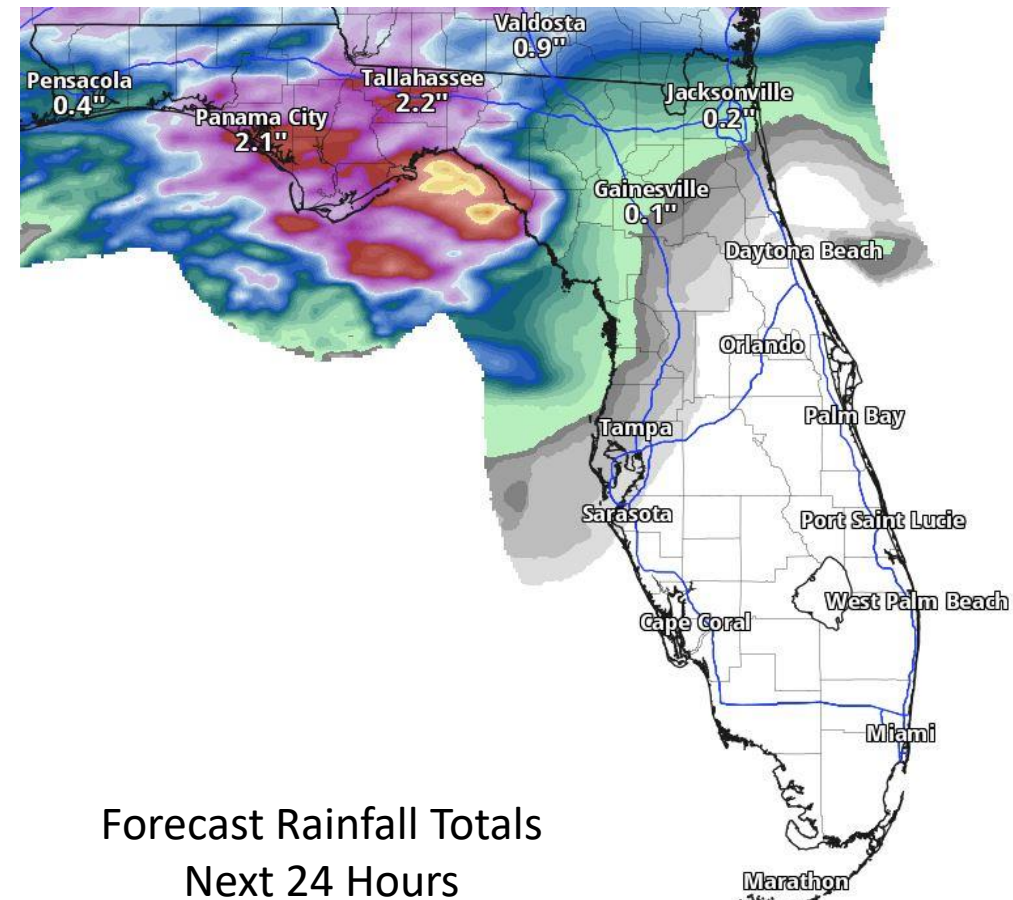
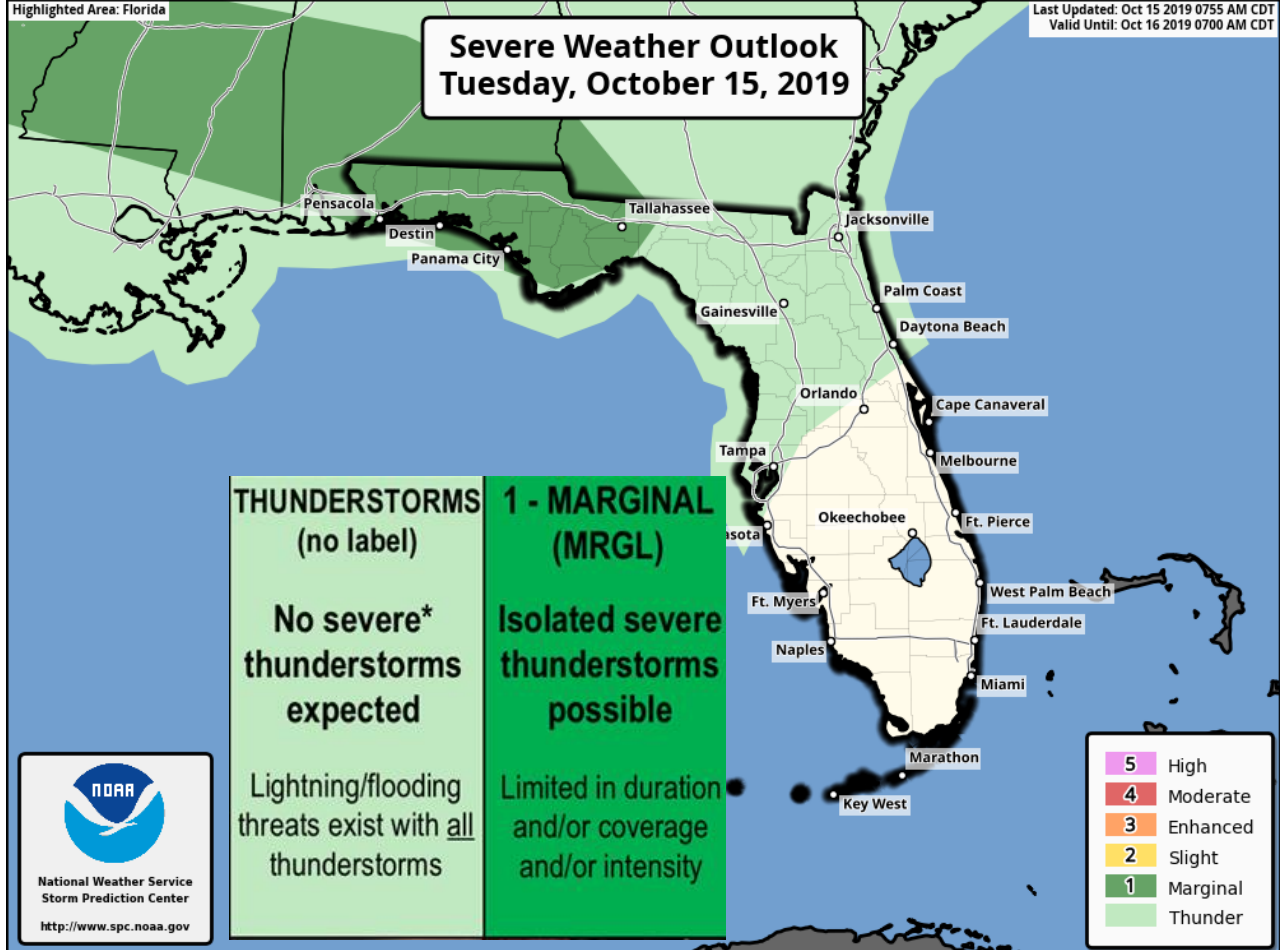


Yucatan Low: A trough of low pressure is producing small area of showers and thunderstorms over the southern Yucatan peninsula, Belize, and northern Guatemala. By late Wednesday, the disturbance is forecast to emerge over the Bay of Campeche and gradually turn northward. Environmental conditions could become a little more conducive for some development towards the end of the week when the system is located over the western Gulf of Mexico.

* Formation chance through 48 hours...low...near 0 percent.

* Formation chance through 5 days...low...30 percent.

It remains too early to determine if this system will have any impacts to Florida, and it should be monitored into this weekend.



In weather unrelated to the tropics...

A cold front will move into North Florida this afternoon through Wednesday morning bringing the first significant chance of rainfall in several weeks. While the rainfall will be beneficial, a few locations along the I-10 corridor west of Tallahassee could see a strong thunderstorm with damaging winds. Widespread rainfall amounts of 1-2" with locally higher totals of 4" are forecast. Given the very low river levels, water will recede quickly after heavy rainfall ends.

King Tides will continue to bring minor flooding along the St. Johns River, Northeast Florida, Southeast Florida, and the Florida Keys through at least Wednesday.

Summary

Tropical Depression Fifteen

- Tropical Depression Fifteen is located about 210 miles east of the Cabo Verde Islands and is moving to the northwest at 12 mph.
- Fifteen could still strengthen over the next 24 hours, but is otherwise forecast to dissipate due to dry air and high wind shear later this week over the far eastern Atlantic.

Invest 95L

- A tropical wave in the central tropical Atlantic is producing limited showers and thunderstorms this morning a few hundred miles east of the Windward Islands.
- The environment is hostile for any development of this system as it moves towards the Caribbean.
- The National Hurricane Center gives this system a 10% (low) chance of development over the next 48 hours and 5 days.

Yucatan Low

- A trough of low pressure is producing a small area of showers and thunderstorms over the southern Yucatan peninsula, Belize, and northern Guatemala.
- By late Wednesday, the disturbance is forecast to emerge over the Bay of Campeche and gradually turn northward.
- Environmental conditions could become a little more conducive for some development towards the end of the week when the system is located over the western Gulf of Mexico.
- This system has a near 0% (low) chance of development over the next 48 hours and a 30% (low) chance of development over the next 5 days.
- This system may interact with an approaching cold front this weekend to bring increased rain chances to the northern Gulf Coast.

Florida Outlook:

- The next names on the list are Nestor (NES-tor) and Olga (OAL-guh).
- Tropical Depression Fifteen and Invest 95L do not pose a threat to Florida.
- It is too early to determine if the Yucatan Low will have any impacts to Florida, and it should continue to be monitored.
- Unrelated to the tropics, a strong thunderstorm and beneficial rainfall is forecast today and tomorrow for North Florida.

The next tropics packet will be issued Wednesday morning. For the latest information on the tropics, please visit the National Hurricane Center website at www.hurricanes.gov.



TROPICAL UPDATE



Created by:

Michael Spagnolo, Deputy State Meteorologist

Michael.Spagnolo@em.myflorida.com

State Meteorological Support Unit

Florida Division of Emergency Management

Users wishing to subscribe (approval pending) to this distribution list, register at:

https://public.govdelivery.com/accounts/FLDEM/subscriber/new?topic_id=SERT_Met_Tropics.

Other reports available for subscription are available at:

<https://public.govdelivery.com/accounts/FLDEM/subscriber/new?preferences=true>