



# TROPICAL UPDATE



11 AM EDT

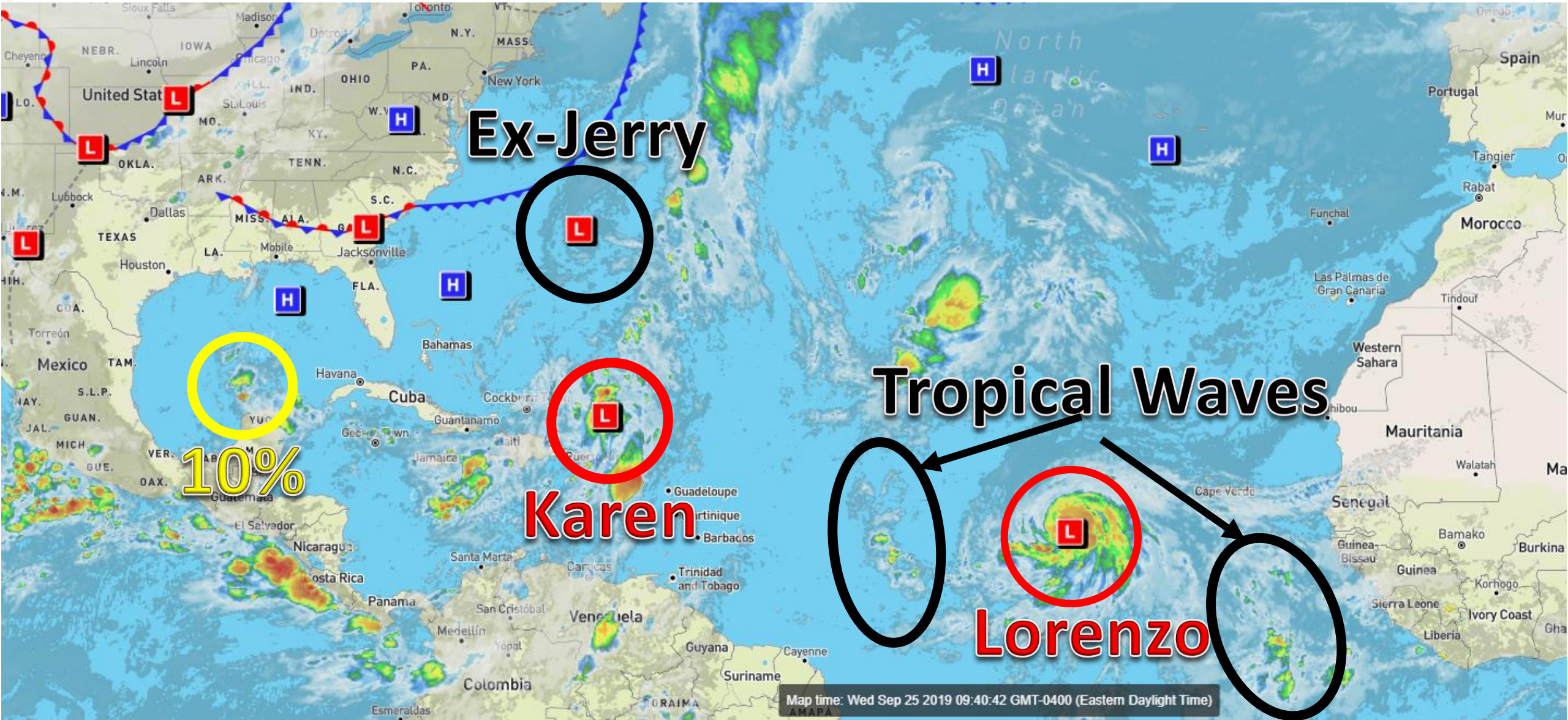
Wednesday, September 25, 2019

Post-Tropical Cyclone Jerry, Tropical Storm Karen,  
Hurricane Lorenzo, & Yucatan Low (10%)

This update is intended for government and emergency response officials, and is provided for informational and situational awareness purposes only. Forecast conditions are subject to change based on a variety of environmental factors. For additional information, or for any life safety concerns with an active weather event please contact your County Emergency Management or Public Safety Office, local National Weather Service forecast office, or visit the National Hurricane Center website at [www.hurricanes.gov](http://www.hurricanes.gov).

# Atlantic Basin Satellite Image

Chance of development: — None    — Low    — Medium    — High





Over the next few days....

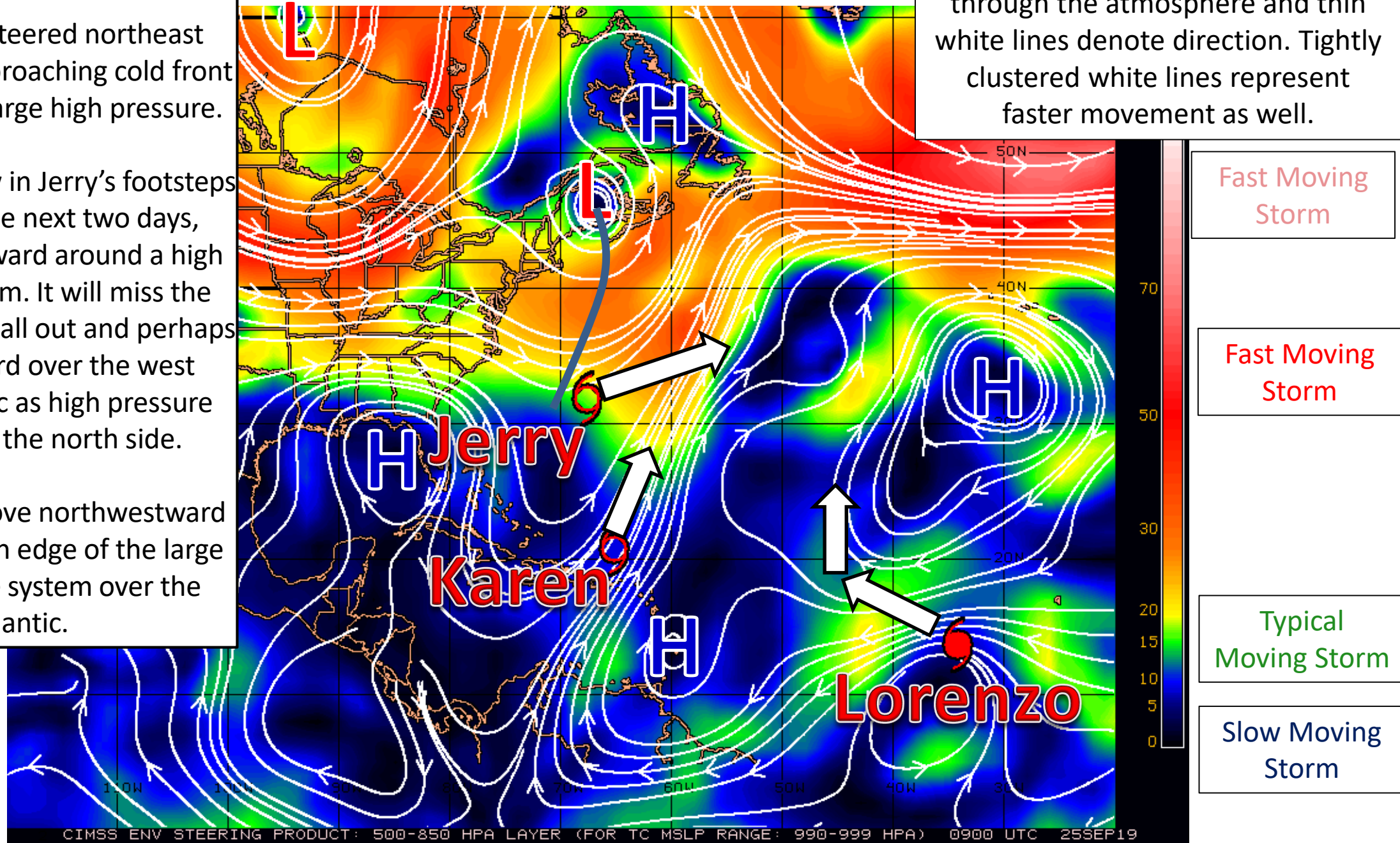
Jerry will be steered northeast ahead of an approaching cold front and around a large high pressure.

Karen will follow in Jerry's footsteps for at least the next two days, heading northward around a high pressure system. It will miss the cold front and stall out and perhaps drift westward over the west central Atlantic as high pressure builds in on the north side.

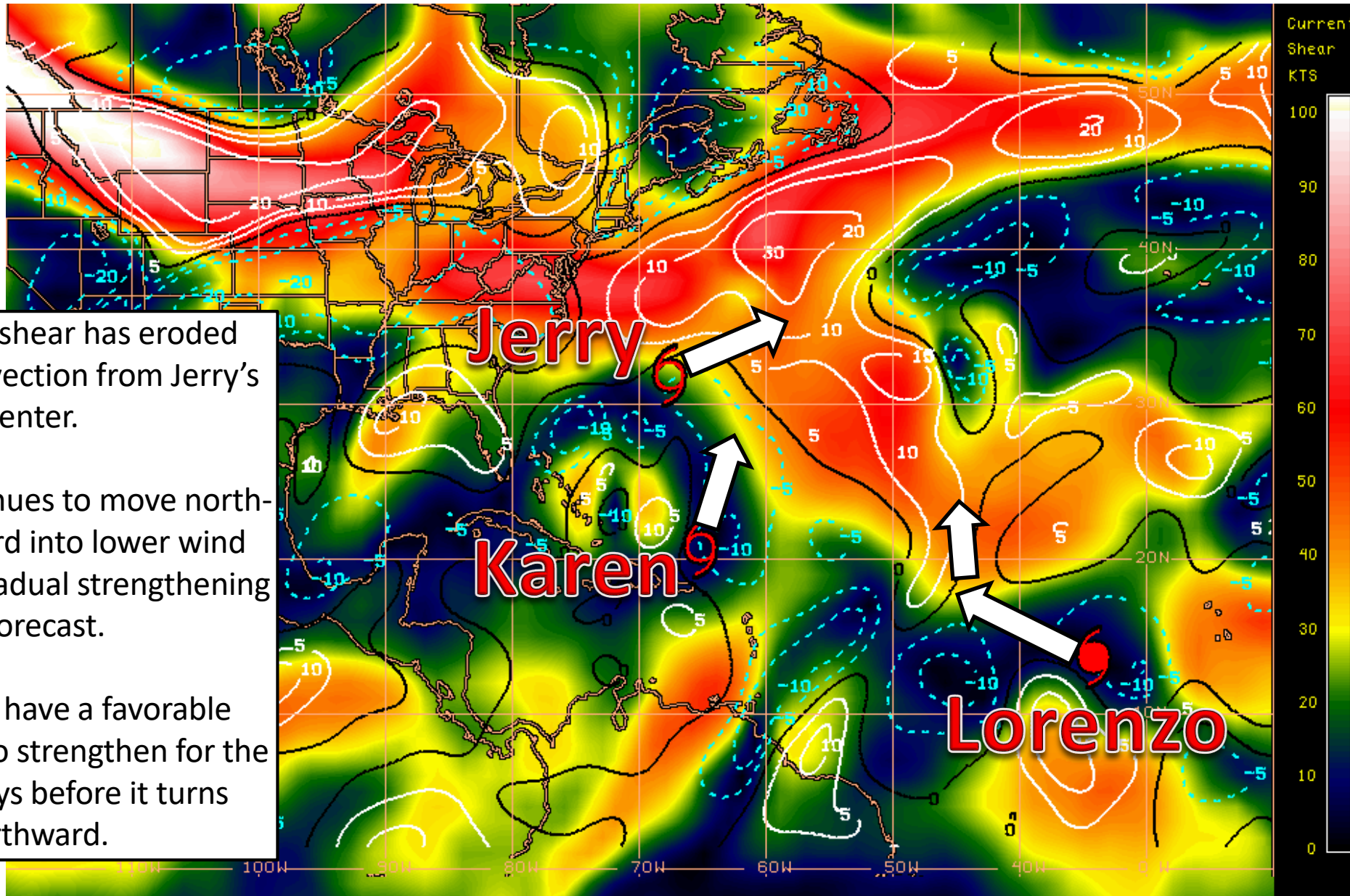
Lorenzo will move northwestward on the southern edge of the large high pressure system over the Atlantic.

# Steering Currents

Color denotes the movement speed through the atmosphere and thin white lines denote direction. Tightly clustered white lines represent faster movement as well.



# Wind Shear (shaded) and Wind Shear Tendencies (contoured)



Strong wind shear has eroded nearly all convection from Jerry's center.

As Karen continues to move north-northeastward into lower wind shear, some gradual strengthening is forecast.

Lorenzo will have a favorable environment to strengthen for the next few days before it turns northward.

HIGH Shear  
(Unfavorable)

HIGH Shear  
(Unfavorable)

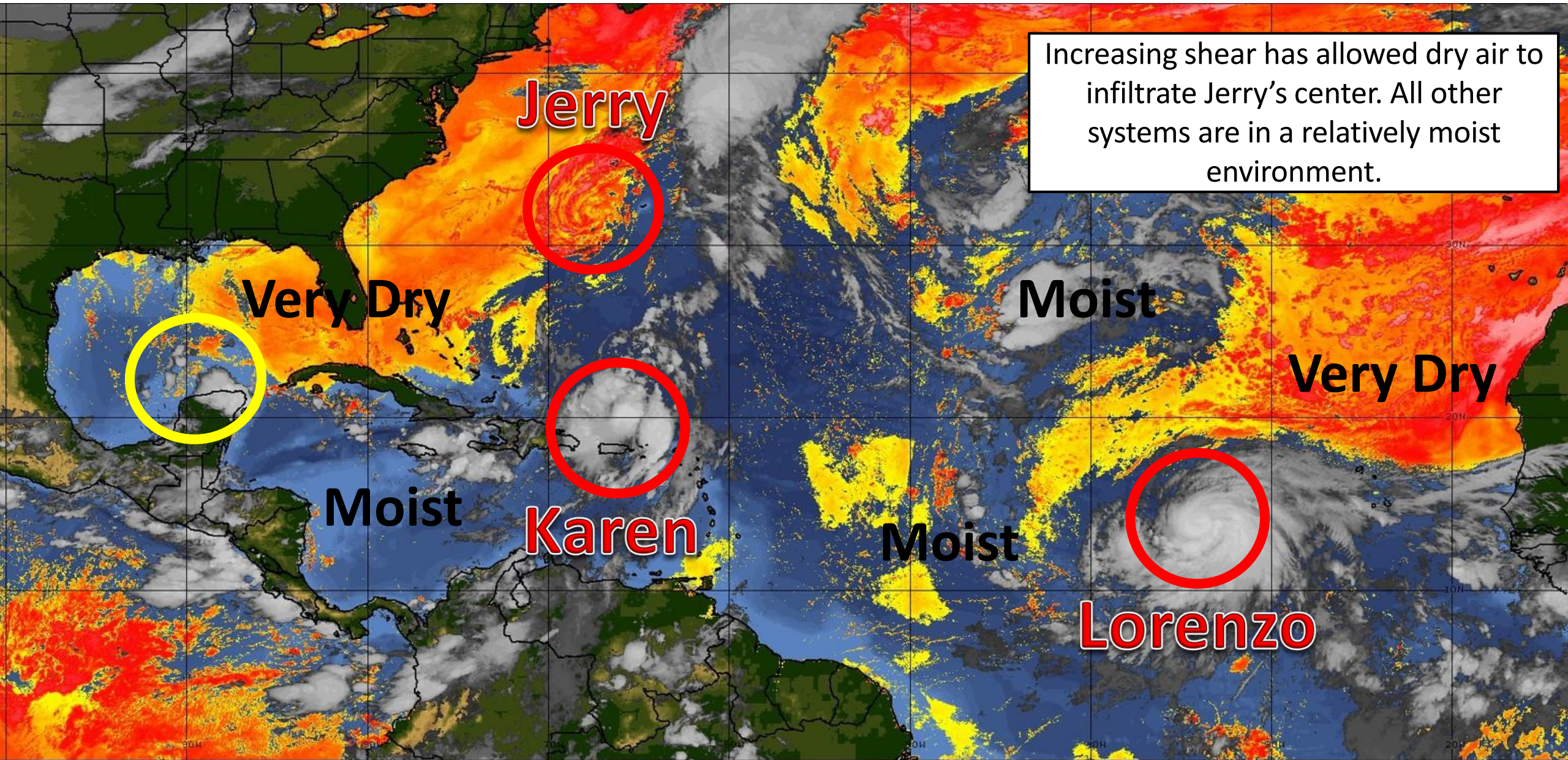
MODERATE  
Shear  
(Neutral)

LOW Shear  
(Favorable)

Shear Tendency (KTS) Over Past 24 Hours: Increasing ——— Decreasing - - - -



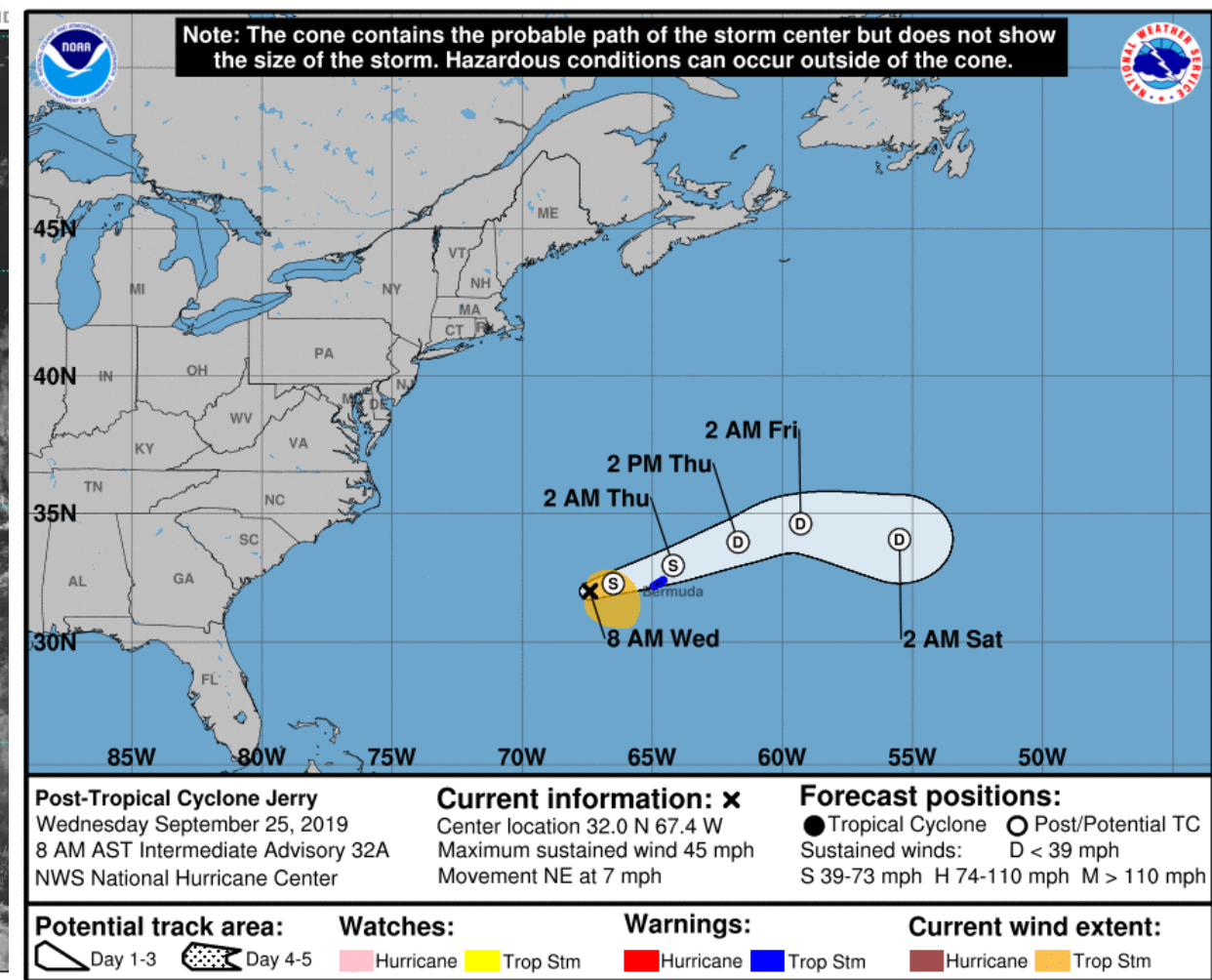
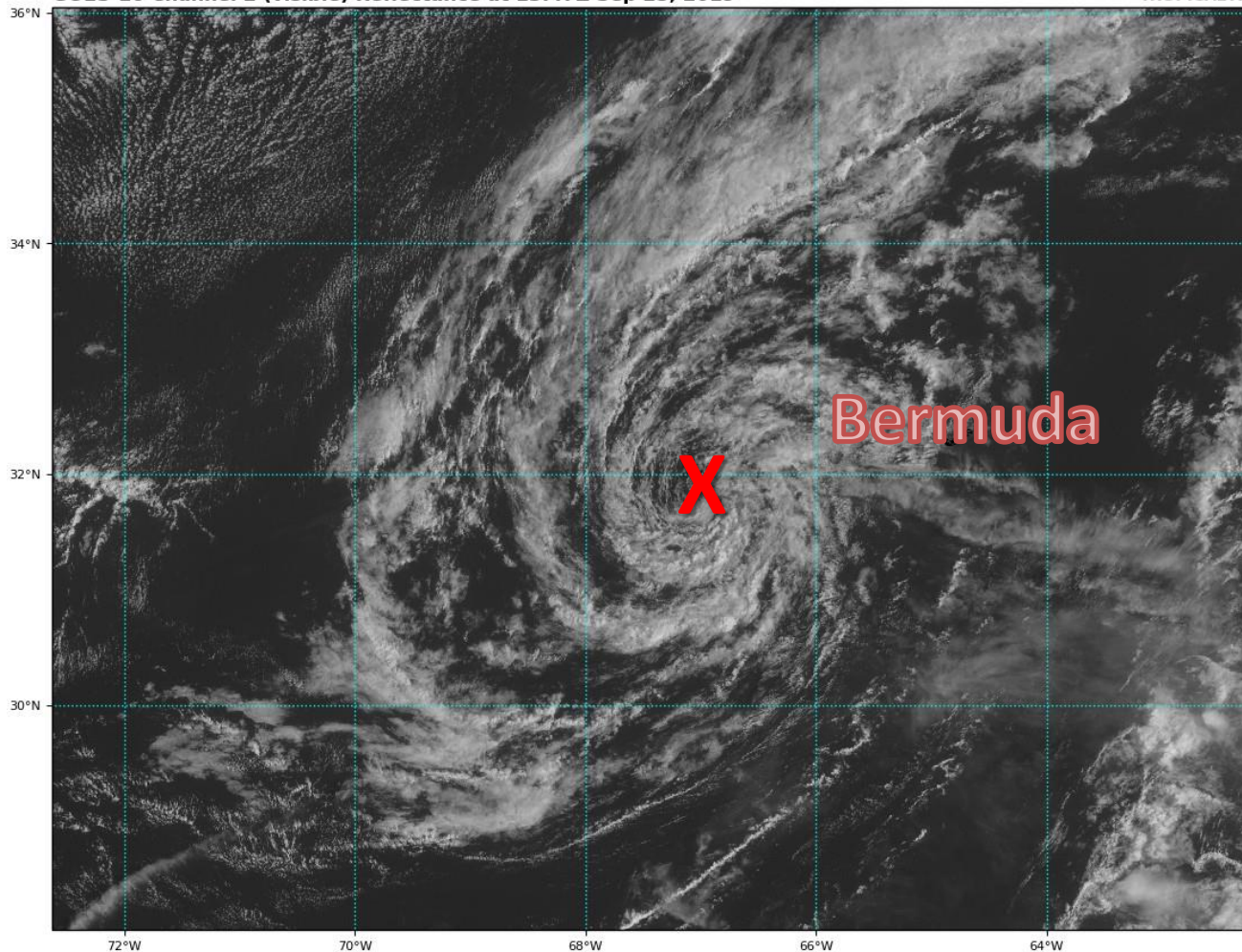
# Dry Air & Saharan Dust



Increasing shear has allowed dry air to infiltrate Jerry's center. All other systems are in a relatively moist environment.

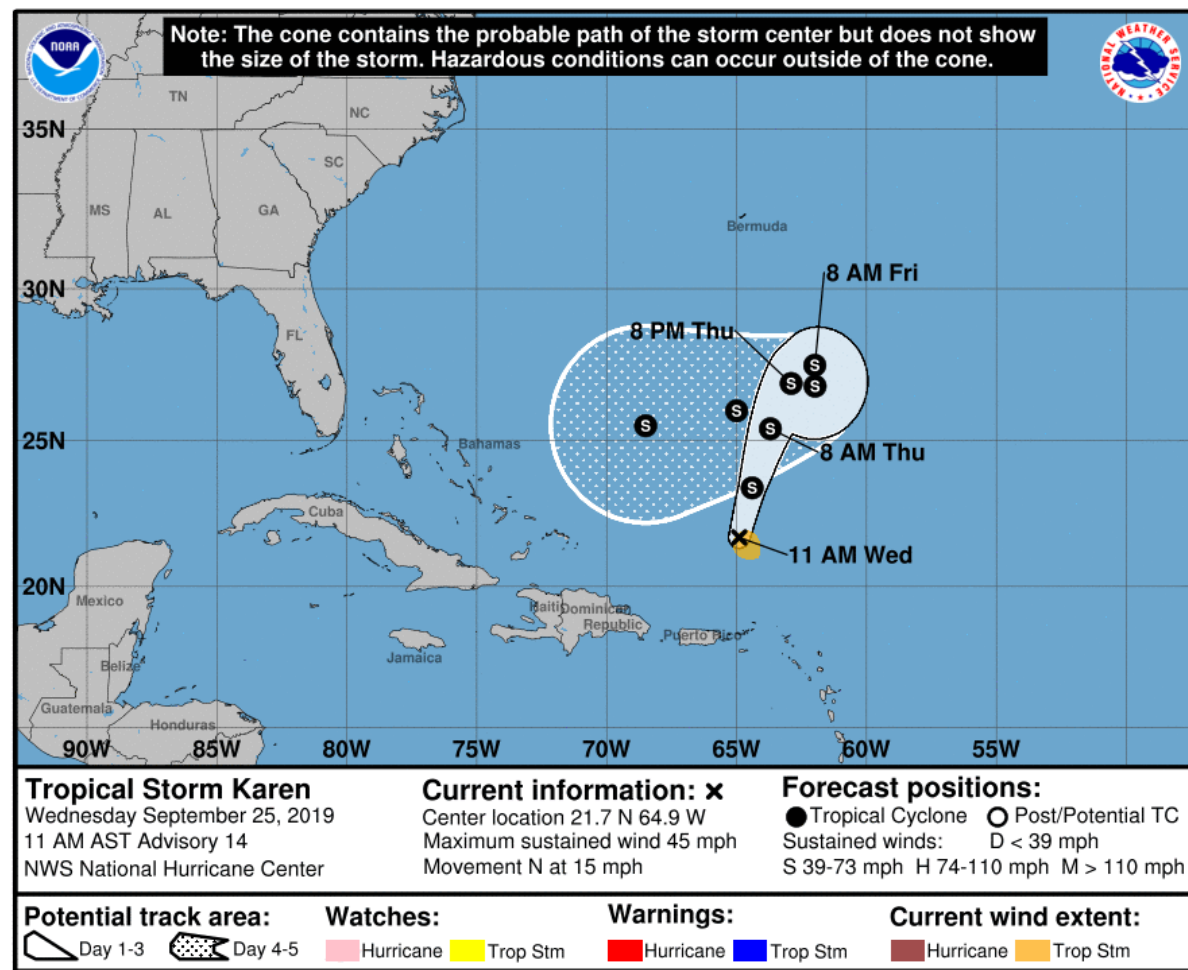
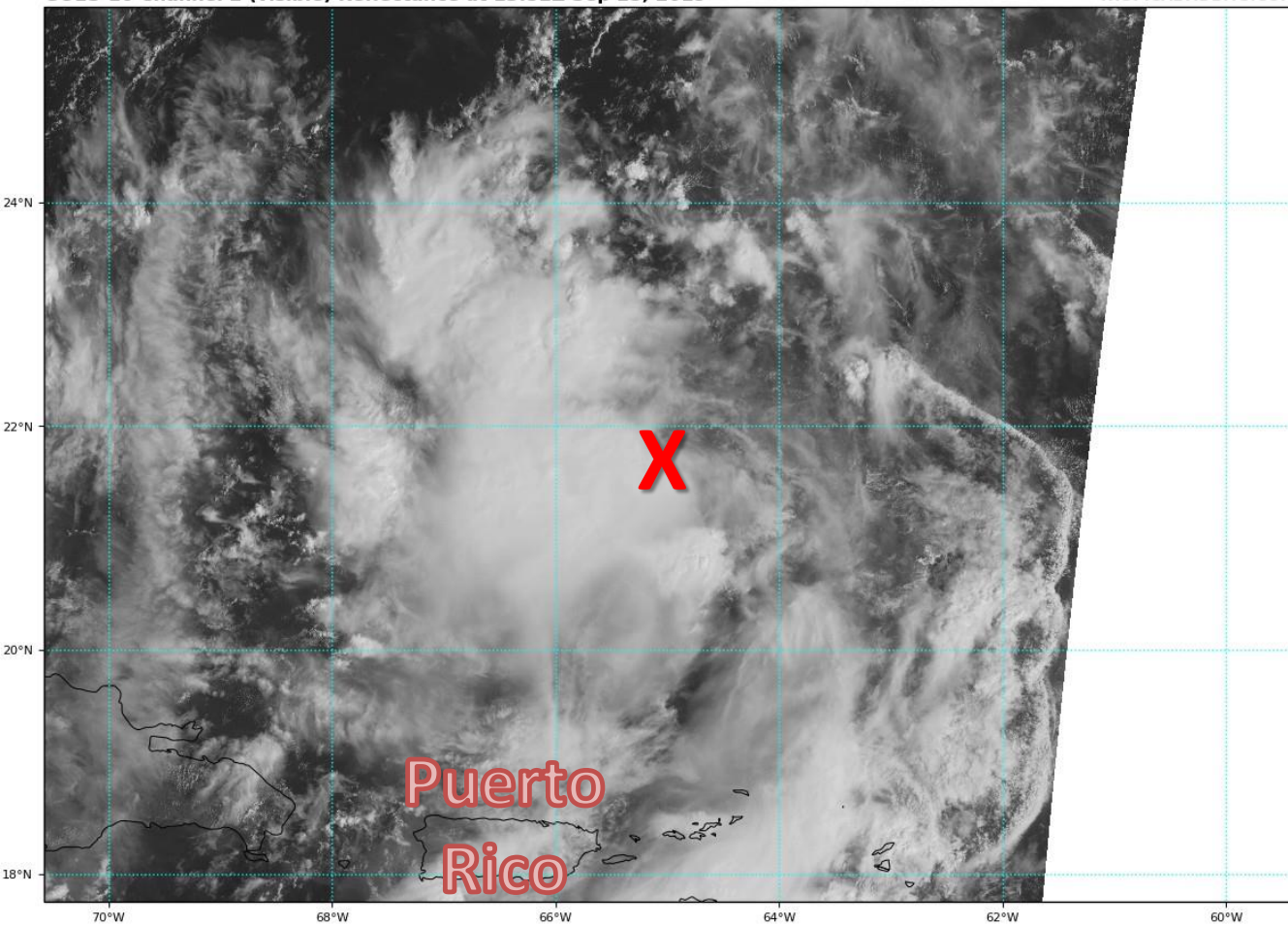
LESS <----- DRY AIR (LOW/MID-LEVEL) AND/OR DUSTY SAL AIRMASS -----> MORE





**Post-Tropical Cyclone Jerry**: Jerry is located about 120 miles west of Bermuda and moving east-northeast at 10 mph. Jerry is forecast to accelerate northeastward as it passes near Bermuda. Jerry has been void of showers and thunderstorms for almost 24 hours and have been declared post-tropical. Jerry is forecast to dissipate by this weekend. **This system poses no threat to Florida.**

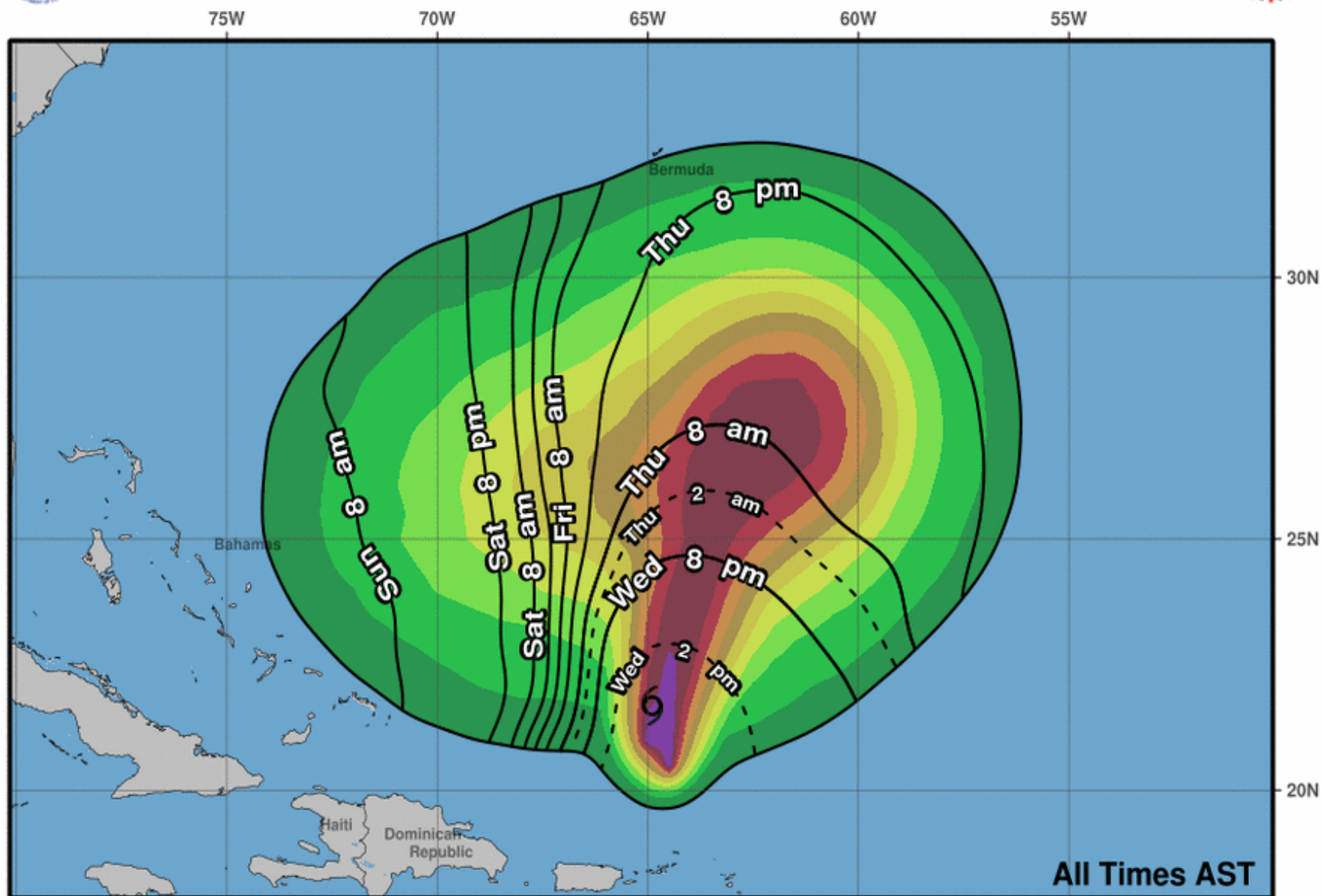




**Tropical Storm Karen:** Karen remains very disorganized with the center of the storm (red X) to the east of showers and thunderstorms this morning. Maximum sustained winds are near 45 mph and movement is to the north at 15 mph. Karen will continue northward until Thursday. By the end of the week, Karen will begin to slow down in the Southwest Atlantic and may stall out or loop. The intensity and track forecast is uncertain after Friday and at this time, little change in strength is forecast as the system starts moving west.



# Earliest Reasonable Arrival Time of Tropical-Storm-Force Winds



**Tropical Storm Karen**

**Wed. Sep. 25, 2019 11 am AST**

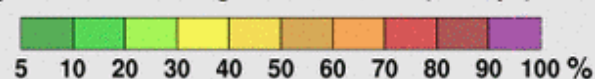
**Advisory 14**

Storm Location ○ < 34 kt (39 mph)

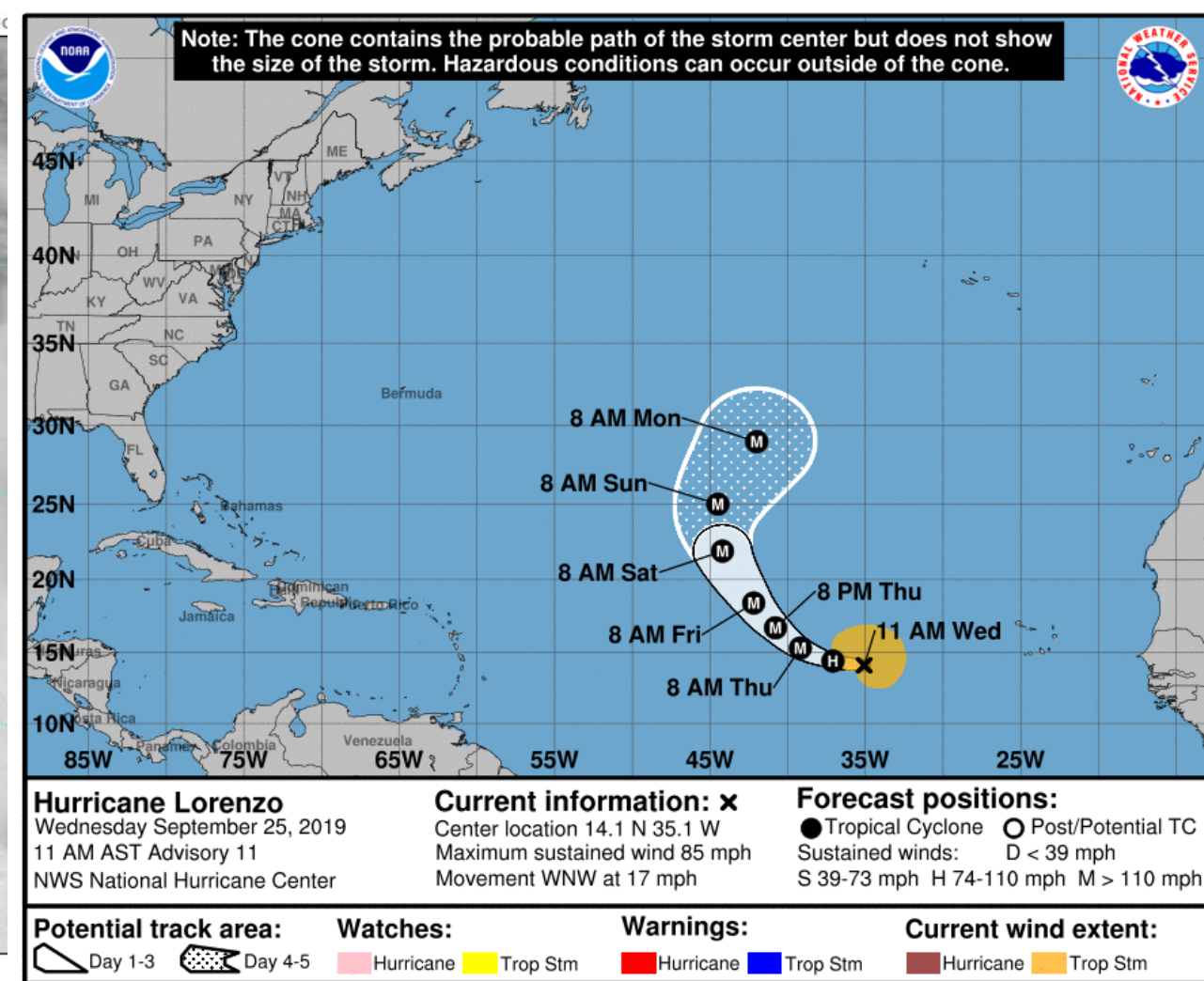
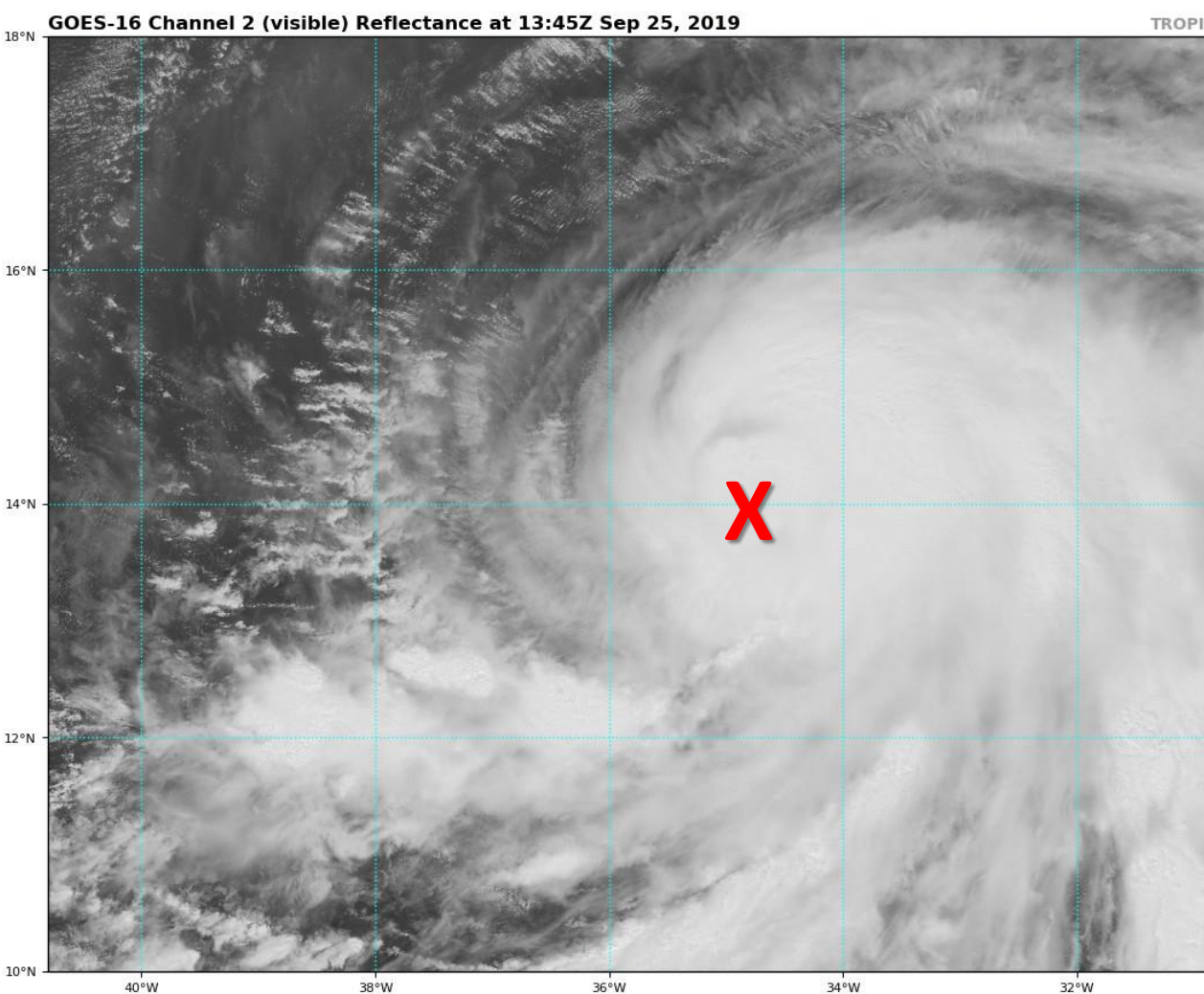
& ○ 34-63 kt (39-73 mph)

Wind Speed ● ≥ 64 kt (74 mph)

5-day chance of receiving sustained 34+ kt (39+ mph) winds

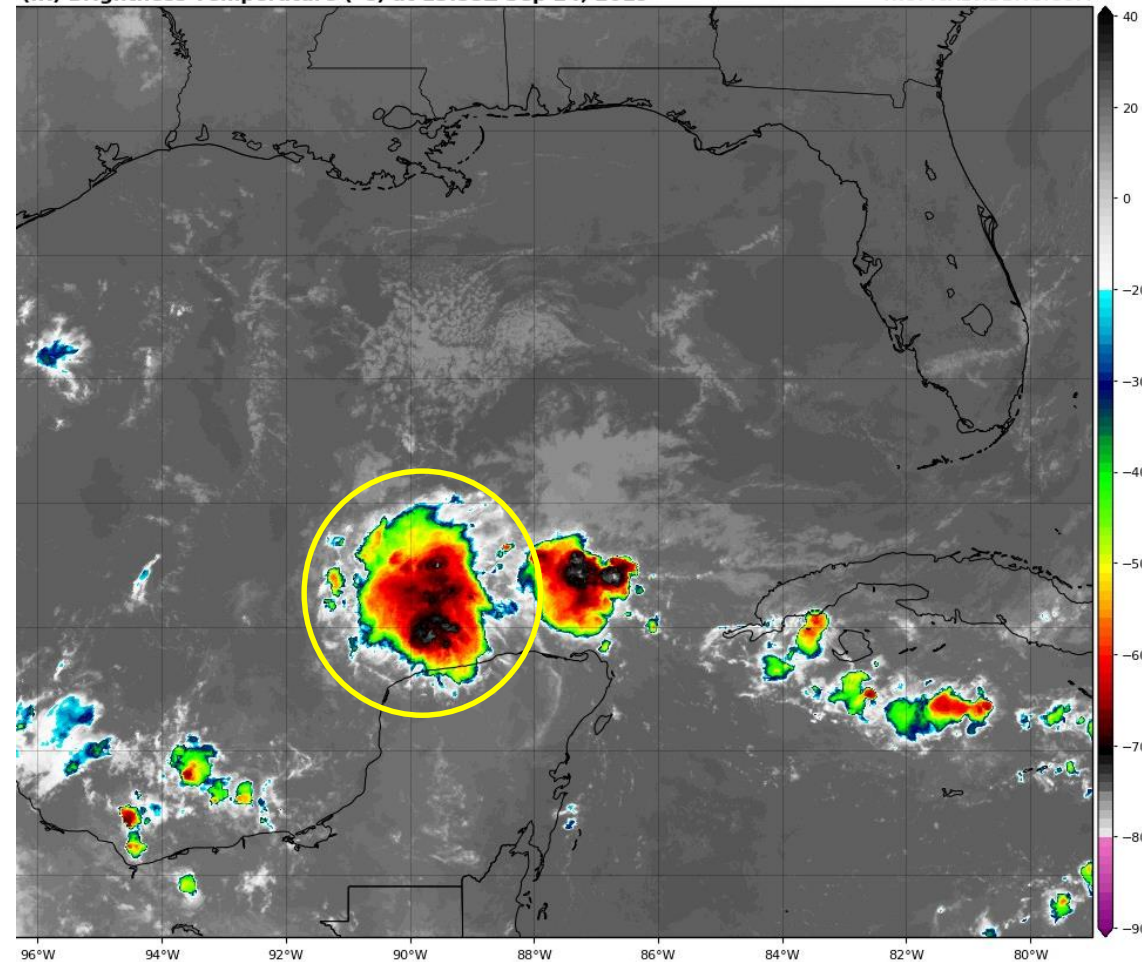






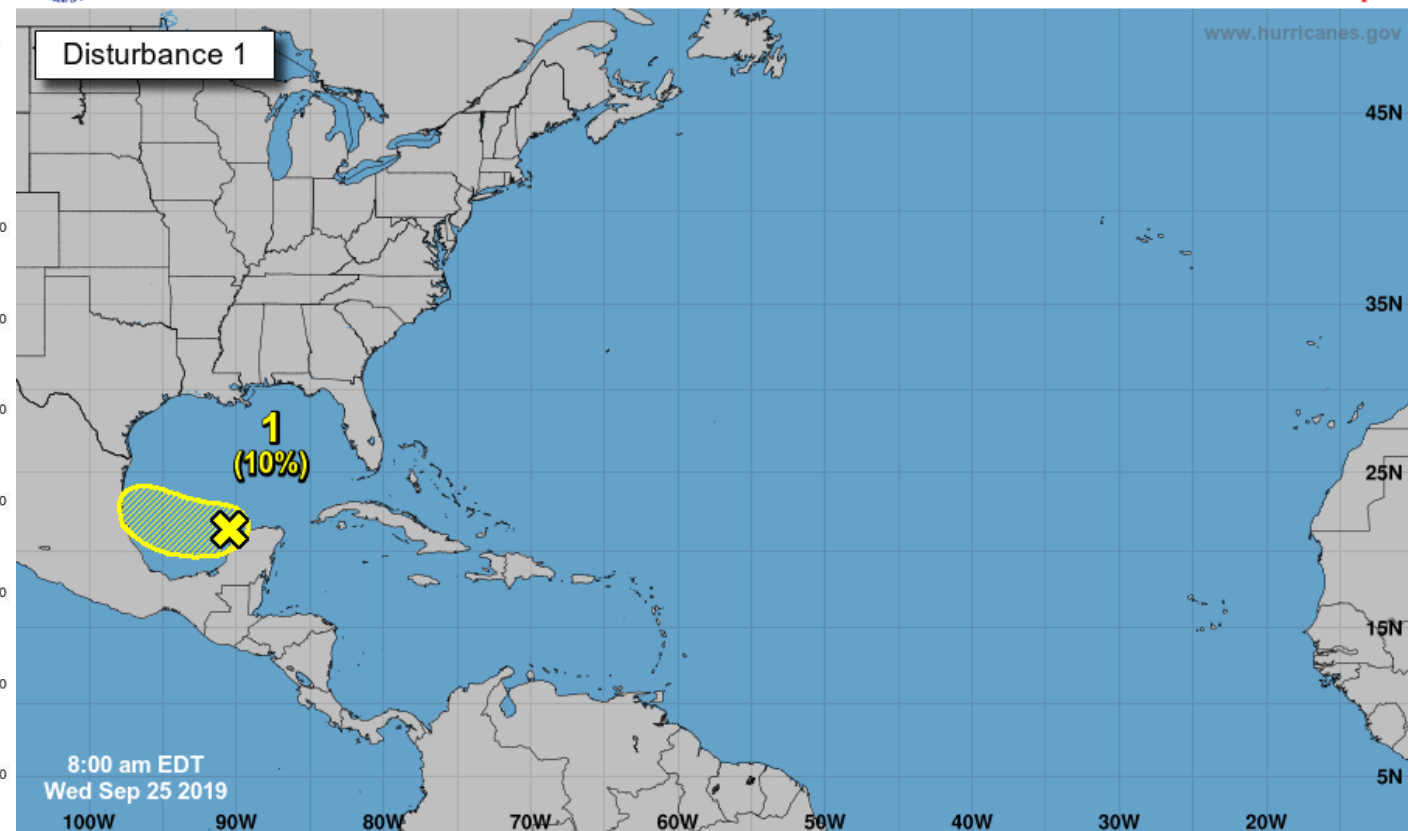
**Hurricane Lorenzo:** Lorenzo continues to strengthen over the eastern tropical Atlantic. Lorenzo is located 715 miles west of the southernmost Cabo Verde Islands, moving west-northwest at 17 mph. Maximum sustained winds have increased to near 85 mph. Lorenzo is forecast to become a major hurricane within the next 24 hours. Lorenzo is expected to turn by this weekend and recurve out to sea. **This system poses no threat to Florida.**





## Five-Day Graphical Tropical Weather Outlook

National Hurricane Center Miami, Florida



8:00 am EDT  
Wed Sep 25 2019

Current Disturbances and Five-Day Cyclone Formation Chance: < 40% 40-60% > 60%  
Tropical or Sub-Tropical Cyclone: Depression Storm Hurricane  
 Post-Tropical Cyclone or Remnants

**Yucatan Low:** A weak area of low pressure located just offshore of the northwestern coast of the Yucatan Peninsula is producing limited shower activity. Significant development of this system is not anticipated while it moves westward at about 5 mph across the southwestern Gulf of Mexico. The disturbance is expected to move inland over northeastern Mexico on Saturday. **This system poses no threat to Florida.**

\* Formation chance through 48 hours...low...10 percent.

\* Formation chance through 5 days...low...10 percent.



# Summary

## **Post-Tropical Cyclone Jerry**

- Jerry is located about 120 miles west of Bermuda and has been void of showers and thunderstorms for 24 hours. Jerry is now post-tropical and will dissipate in the next day or two.

## **Tropical Storm Karen**

- Karen remains weak and very disorganized. The center of circulation is displaced from the showers and thunderstorms.
- Maximum sustained winds are at 45 mph and Karen is moving to the north at 15 mph.
- Karen will remain disorganized as it moves northward in the southwestern Atlantic. This weekend, Karen will stall, loop, and track westward as high pressure builds to the north. Little change in strength is forecast over the next 5 days.

## **Hurricane Lorenzo**

- Lorenzo continues to strengthen and is now a Category 1 hurricane with maximum sustained winds of 85 mph.
- Lorenzo is forecast to become a Major Hurricane over the next few days over the open waters of the Atlantic as it turns northward.

## **Yucatan Low**

- A small area of low pressure near the Yucatan Peninsula in the Gulf of Mexico is not expected to have significant development. This system has a 10% (low) chance of development over the next 48 hours and 5 days.

## **Florida Outlook:**

- Jerry and the Yucatan Low are no threat to Florida. Both are too weak to produce significant ocean swells.
- It is too early to tell if Karen will have any impacts to Florida, and it should continue to be monitored. While confidence is increasing in a westward movement, the intensity forecast remains uncertain and it is unknown how far west Karen will move. Impacts, if any, are at least 7 days away.
- Lorenzo poses no threat to Florida and will be far enough out to sea that swells will not impact Florida beaches.

The next tropics packet will be issued Thursday morning. For the latest information on the tropics, please visit the National Hurricane Center website at [www.hurricanes.gov](http://www.hurricanes.gov). For the latest flood updates, see the latest products from your local National Weather Service, the [Southeast River Forecast Center](#), and the [Weather Prediction Center](#).





# TROPICAL UPDATE



Created by:

Cameron Young, Assistant State Meteorologist

[Cameron.Young@em.myflorida.com](mailto:Cameron.Young@em.myflorida.com)

Michael Spagnolo, Deputy State Meteorologist

[Michael.Spagnolo@em.myflorida.com](mailto:Michael.Spagnolo@em.myflorida.com)

State Meteorological Support Unit

Florida Division of Emergency Management

Users wishing to subscribe (approval pending) to this distribution list, register at:

[https://public.govdelivery.com/accounts/FLDEM/subscriber/new?topic\\_id=SERT\\_Met\\_Tropics](https://public.govdelivery.com/accounts/FLDEM/subscriber/new?topic_id=SERT_Met_Tropics).

Other reports available for subscription are available at:

<https://public.govdelivery.com/accounts/FLDEM/subscriber/new?preferences=true>