



TROPICAL UPDATE



11 AM EDT

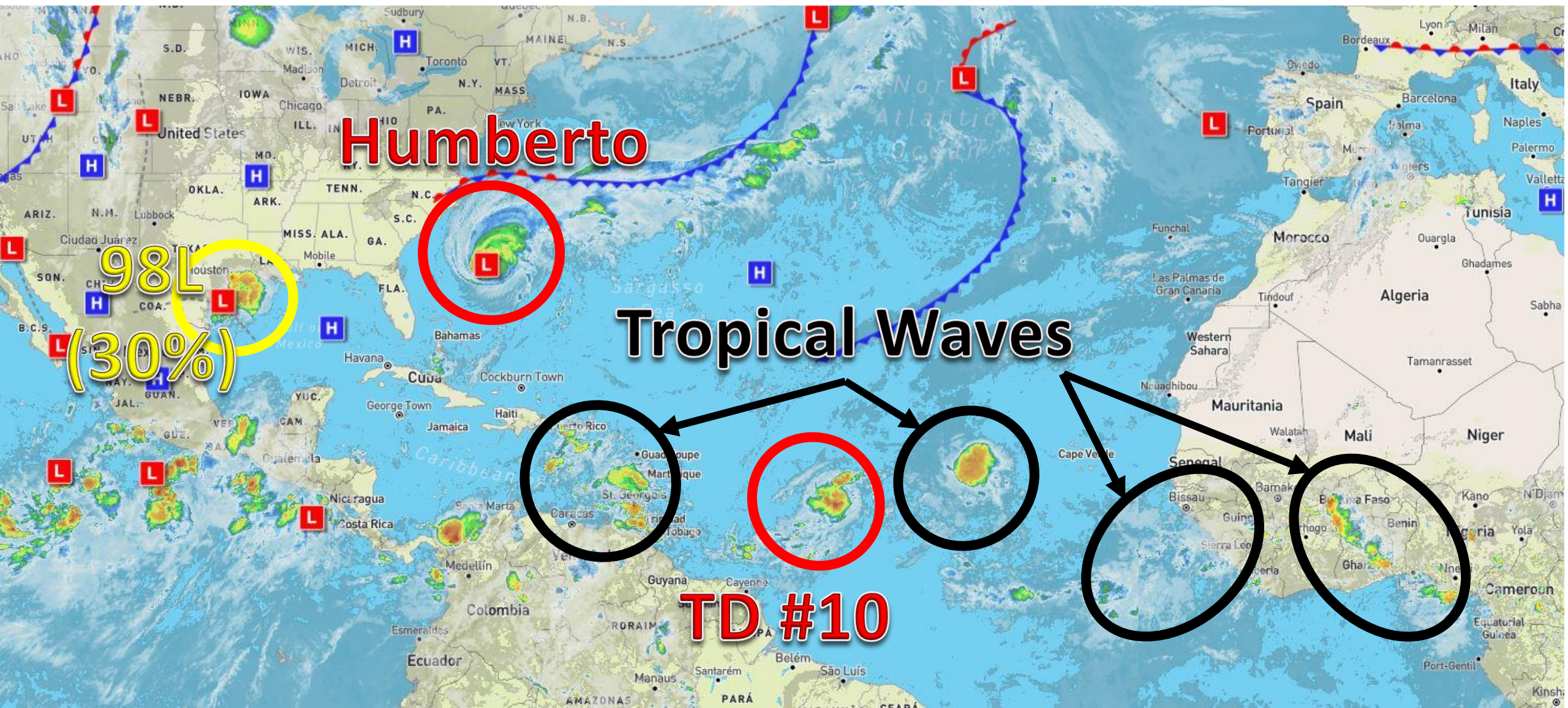
Tuesday, September 17, 2019

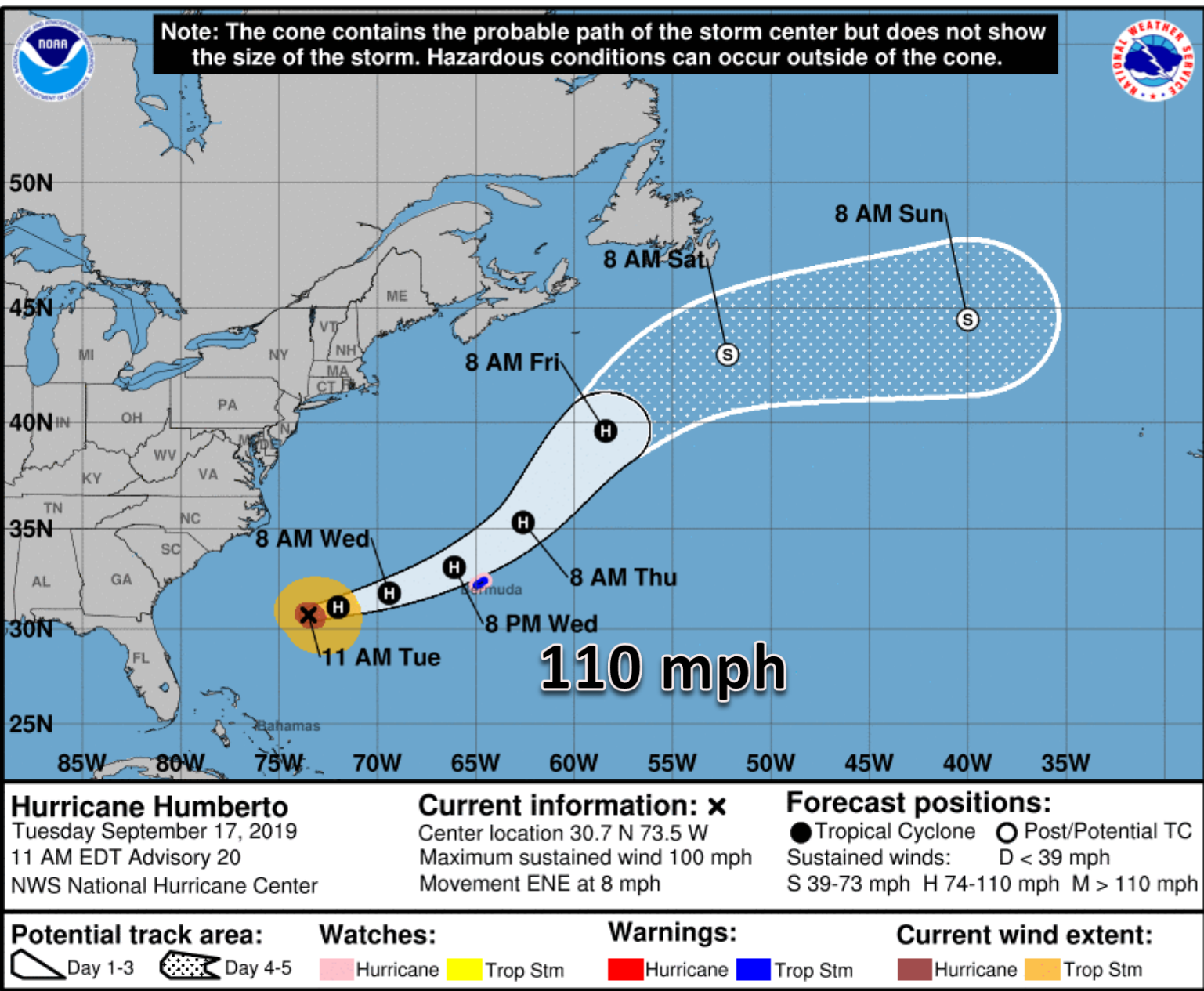
Hurricane Humberto, Tropical Depression #10,
& Invest 98L (30%)

This update is intended for government and emergency response officials, and is provided for informational and situational awareness purposes only. Forecast conditions are subject to change based on a variety of environmental factors. For additional information, or for any life safety concerns with an active weather event please contact your County Emergency Management or Public Safety Office, local National Weather Service forecast office, or visit the National Hurricane Center website at www.hurricanes.gov.

Atlantic Basin Satellite Image

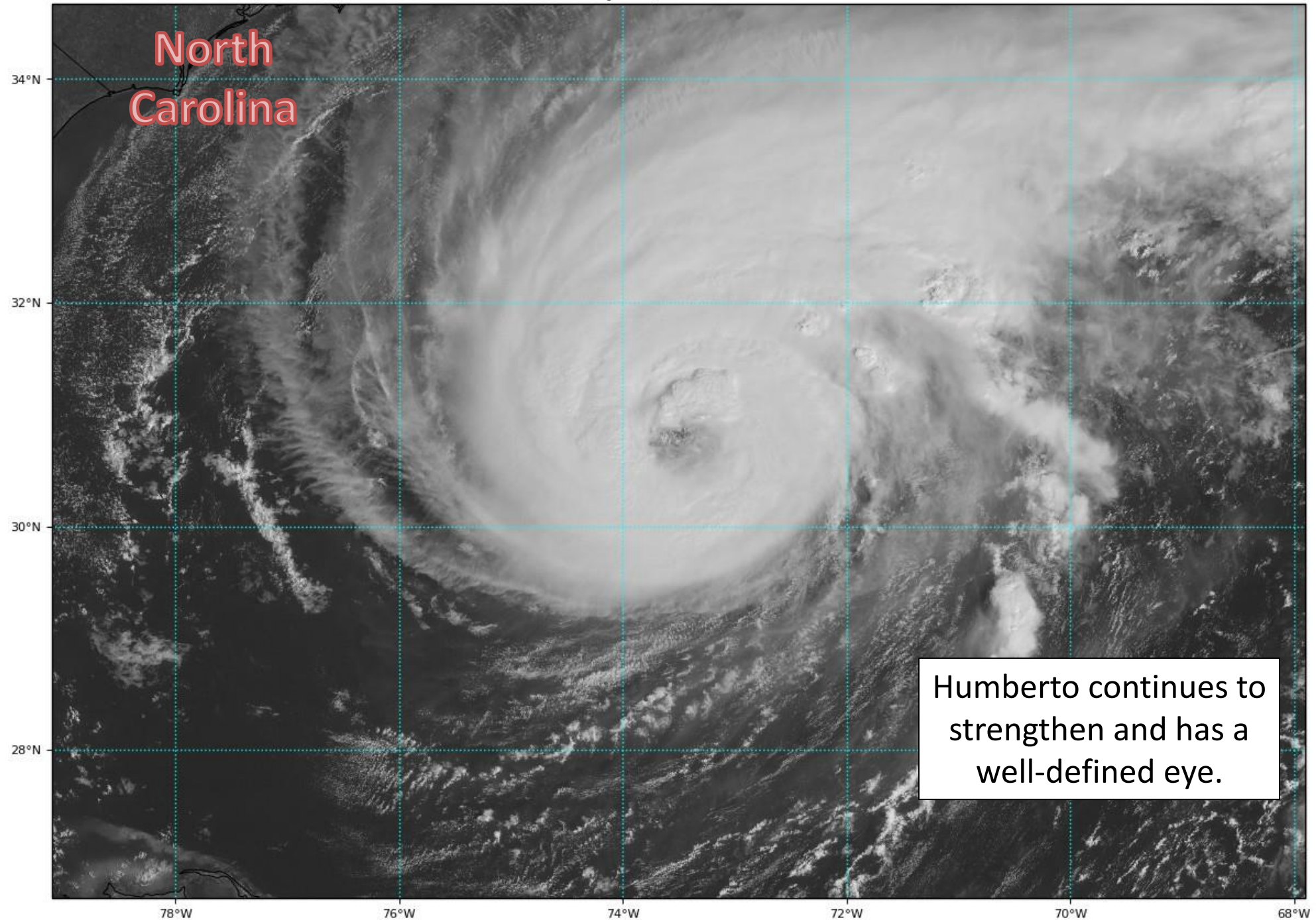
Chance of development: — None — Low — Medium — High

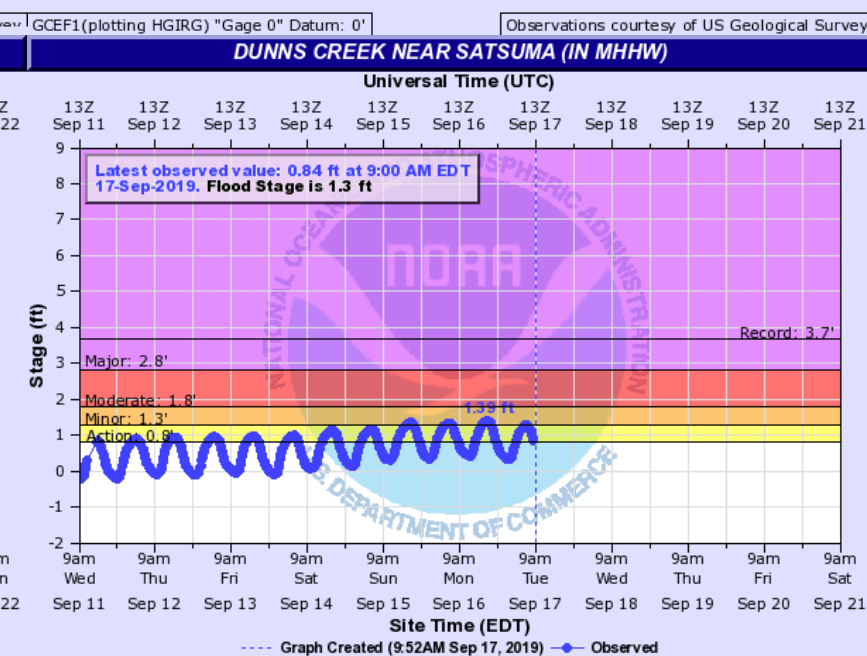
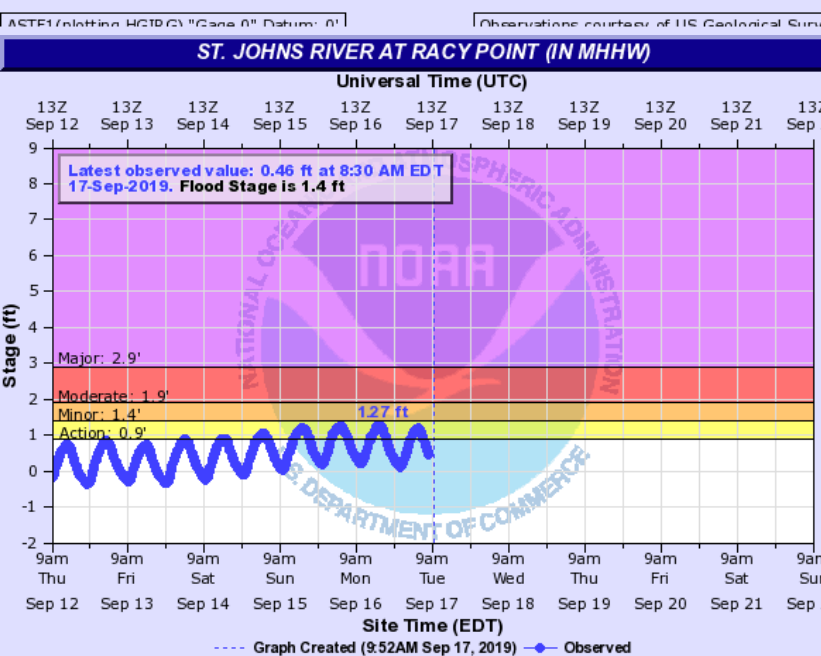
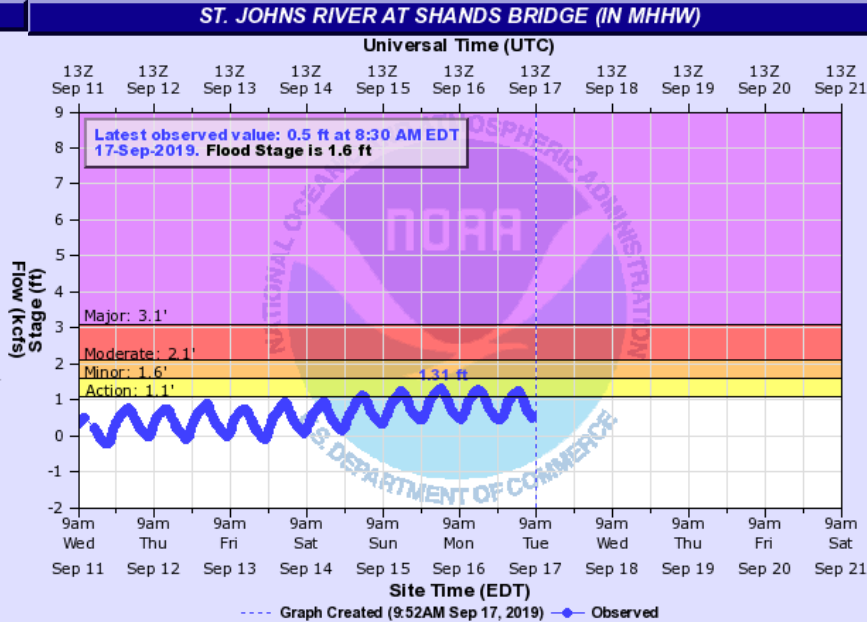
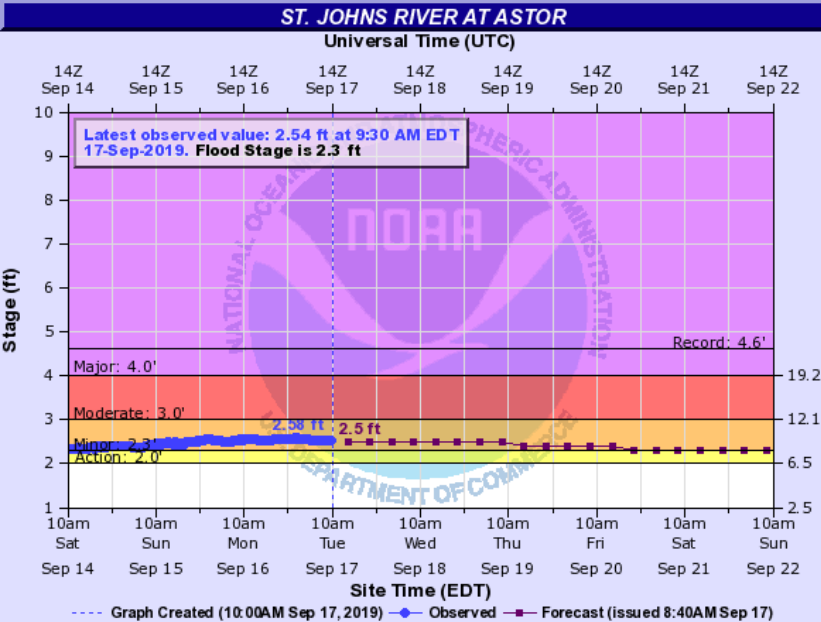




Hurricane Humberto: Humberto is currently located about 525 miles west of Bermuda and moving to the east-northeast at 8 mph. Humberto will continue to the northeast and gradually accelerate. Maximum sustained winds have increased to 100 mph (Category 2 Hurricane), and further strengthening is forecast.

This storm will remain well away from the East Coast of the United States but pass very near to Bermuda Wednesday night.





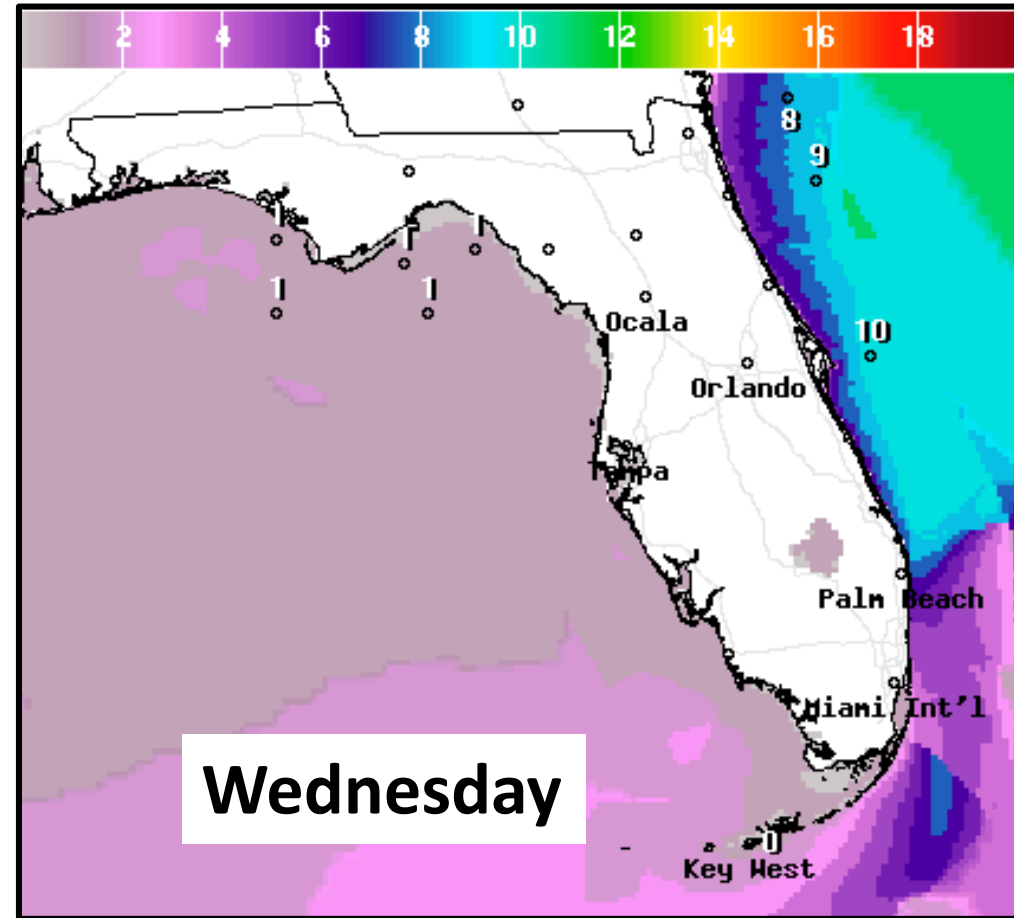
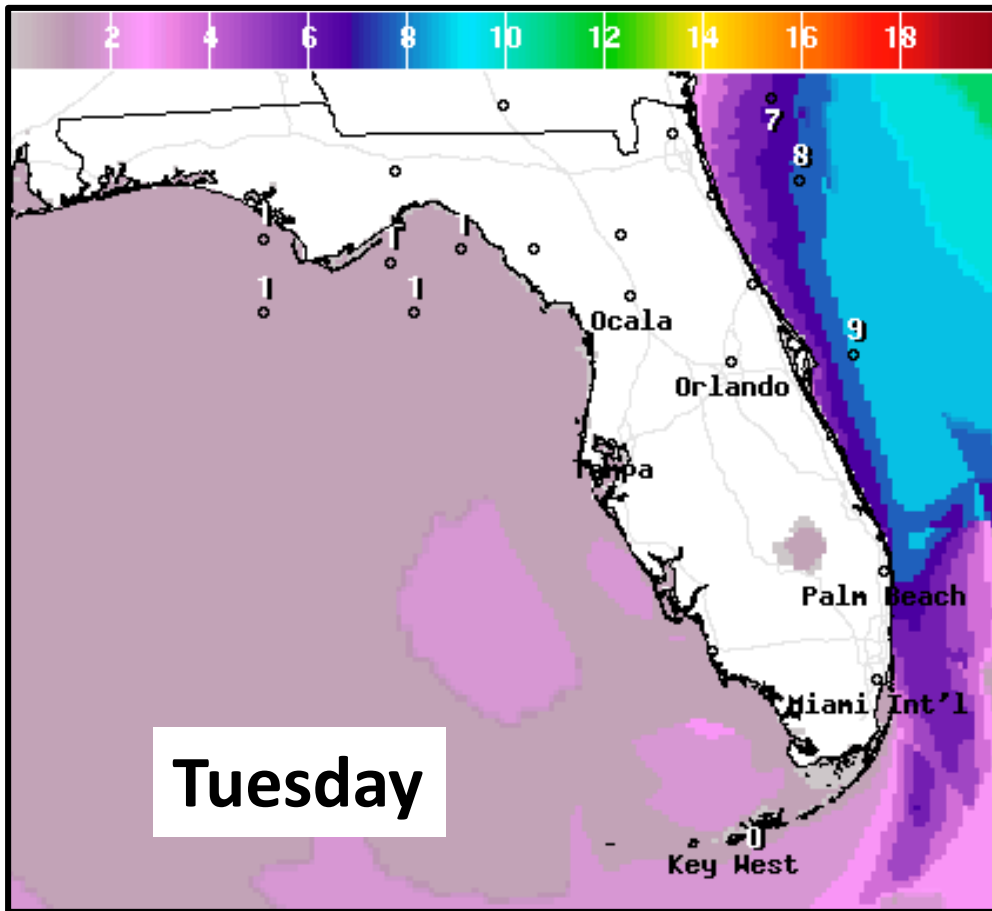
St. Johns River at Astor

The St. Johns River at Astor remains in minor flood stage. Minor flooding is occurring, and minor flooding is forecast to continue throughout the week.

Minor flooding is also occurring at high tide in the lower St. Johns River today due to the persistent onshore winds of the last few days. Tides are running 1-1.5' above normal, and expected to continue through at least Wednesday morning.

Coastal Flood Statement

Forecast Wave Heights



Breaking waves of 4-8' and breezy winds of 10-20 mph will create a **high risk for dangerous rip currents** for much of this week at Atlantic beaches. A cold front will move through on Thursday re-enforcing the breezy onshore winds even after Humberto moves into the North Atlantic. Minor beach erosion is likely to continue.



Breezy winds and swells from Humberto will keep the rip current risk **HIGH** at all Atlantic beaches for the next few days.

BEACH WARNING FLAGS

BANDERAS DE ADVERTENCIA EN LA PLAYA



Water Closed to Public
Agua Cerrada al Publico



High Hazard
High Surf and/or Strong Currents
Peligro Alto, Resaca Alta y/o Corrientes Fuertes



Medium Hazard
Moderate Surf and/or Currents
Peligro Medio, Resaca Moderada y/o Corrientes Fuertes



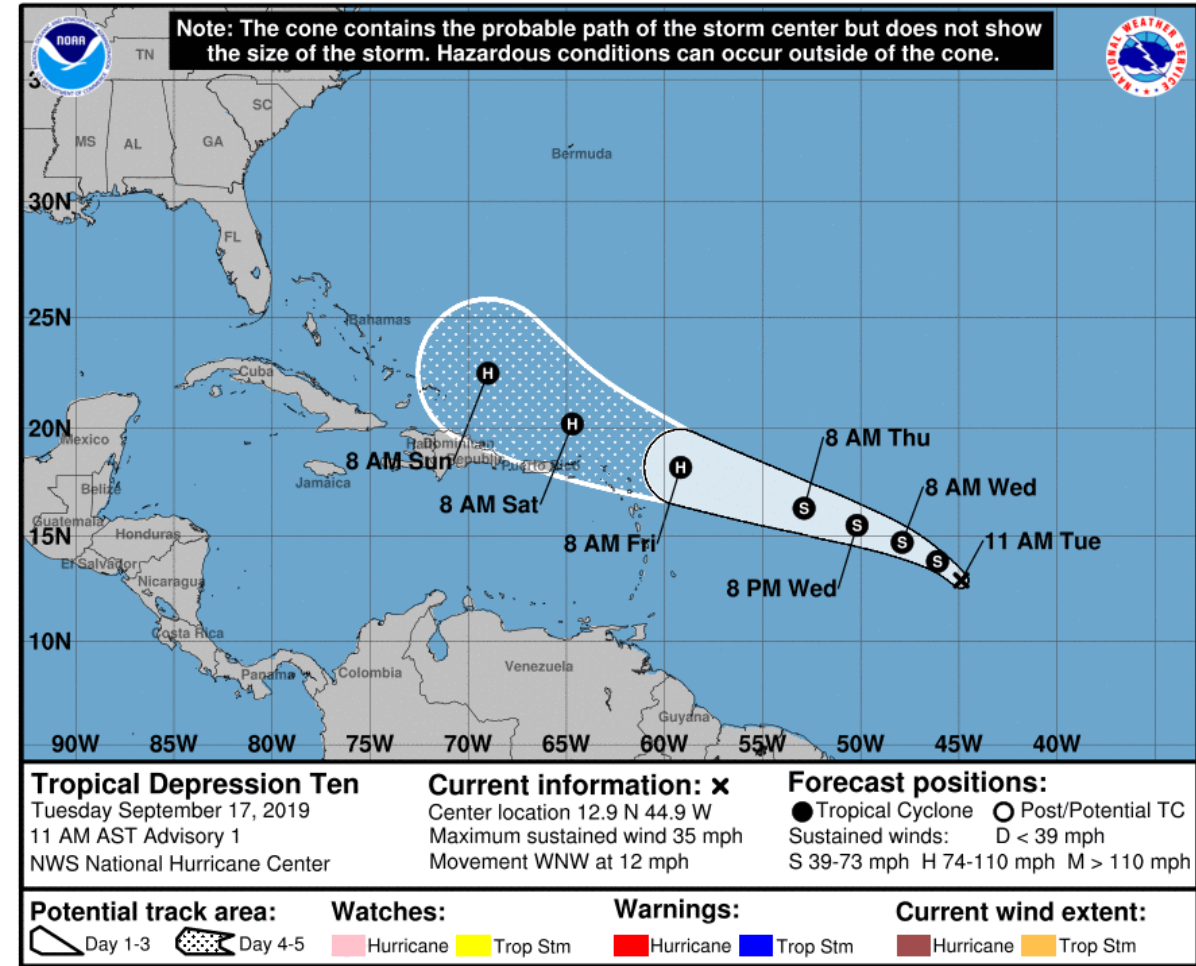
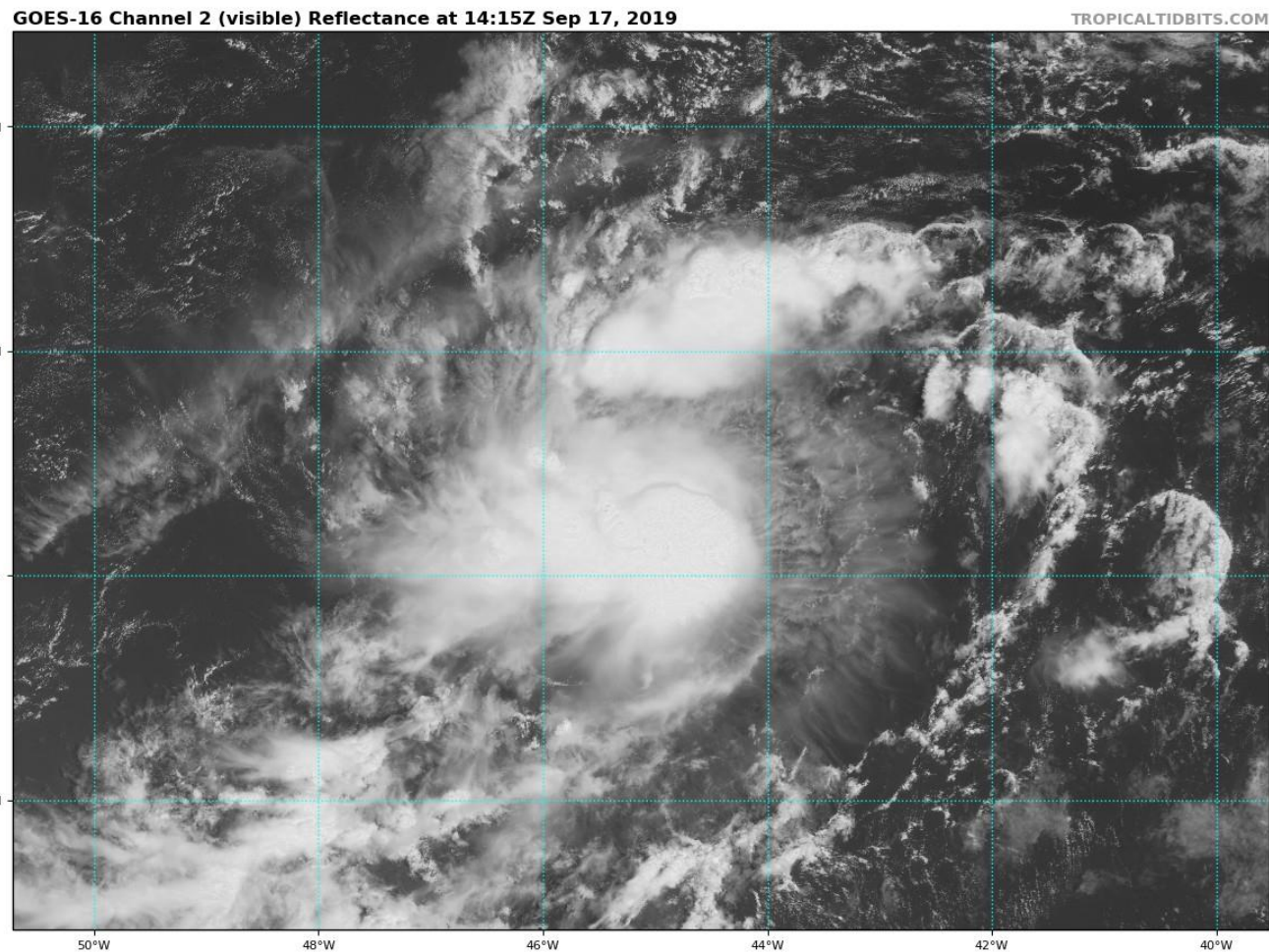
Low Hazard
Calm Conditions, Exercise Caution
Peligro Bajo, Condiciones Calmas, Tenga Cuidado



Stinging Marine Life
Man o' War, Jellyfish, Stingrays
Animal Marino que causa picaduras Fragata Portuguesa, Medusas, Rayas

Absence of Flags Does Not Assure Safe Waters
La Ausencia de Banderas No Asegura Aguas Seguras



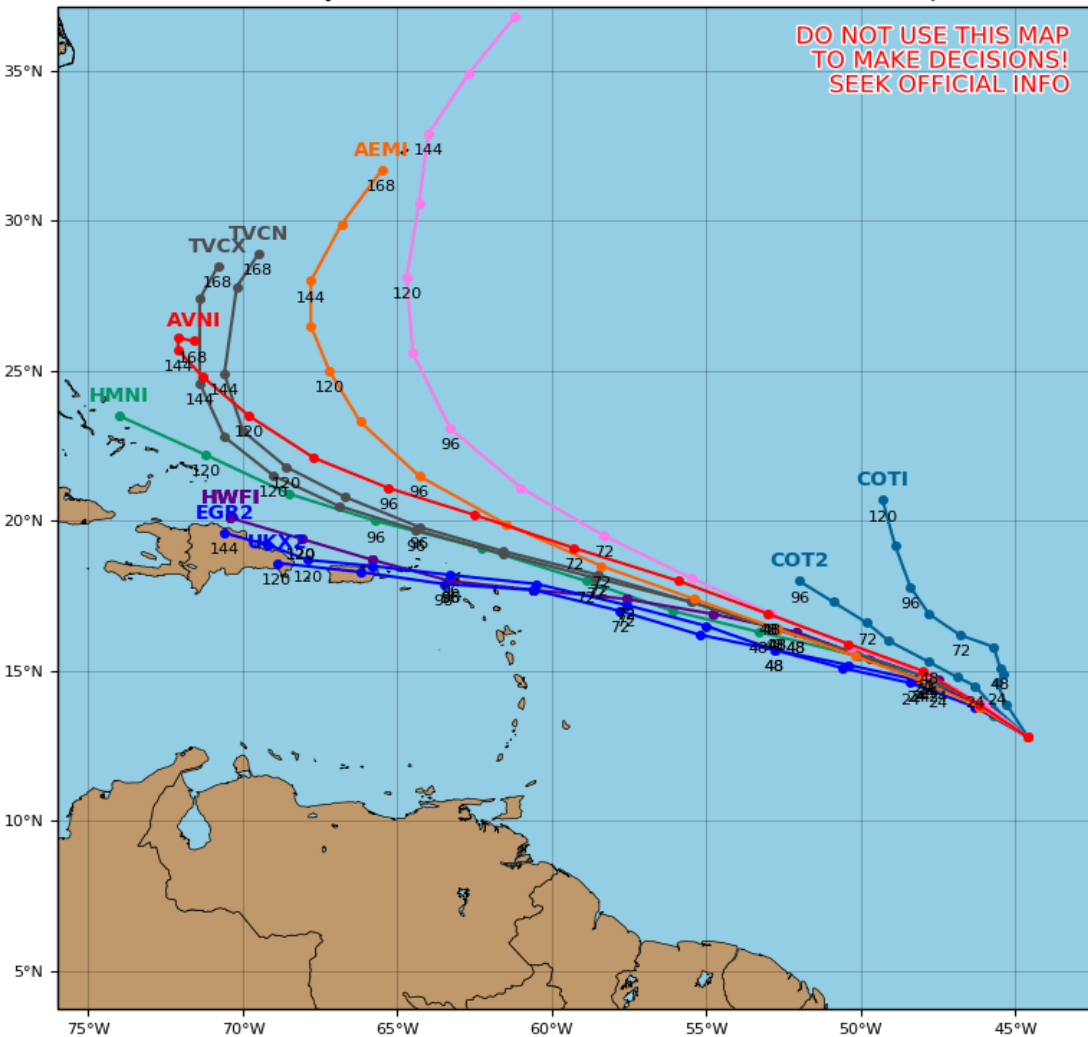


Tropical Depression #10: A well-defined area of low pressure developed yesterday from a tropical wave and continued to produce showers and thunderstorms overnight and through this morning. At 11 AM ET, the National Hurricane Center began advisories on Tropical Depression #10. TD #10 will continue to gradually strengthen as it moves to the west-northwest, becoming a tropical storm later today and a hurricane by the weekend. There is some uncertainty in the track near day 4-5, as the system may turn north.

Invest 97L Model Track Guidance

Initialized at 12z Sep 17 2019

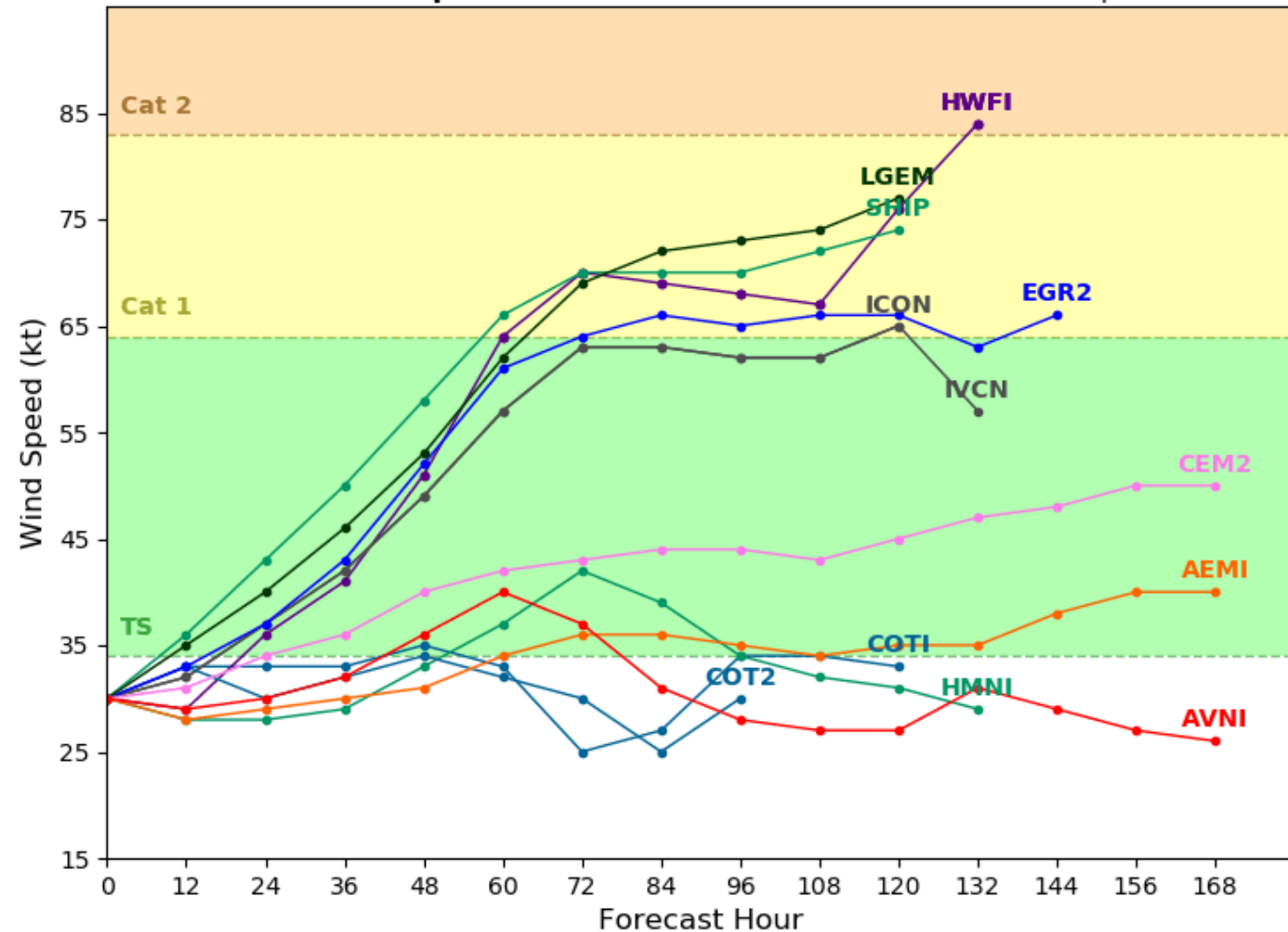
Levi Cowan - tropicaltidbits.com



Invest 97L Model Intensity Guidance

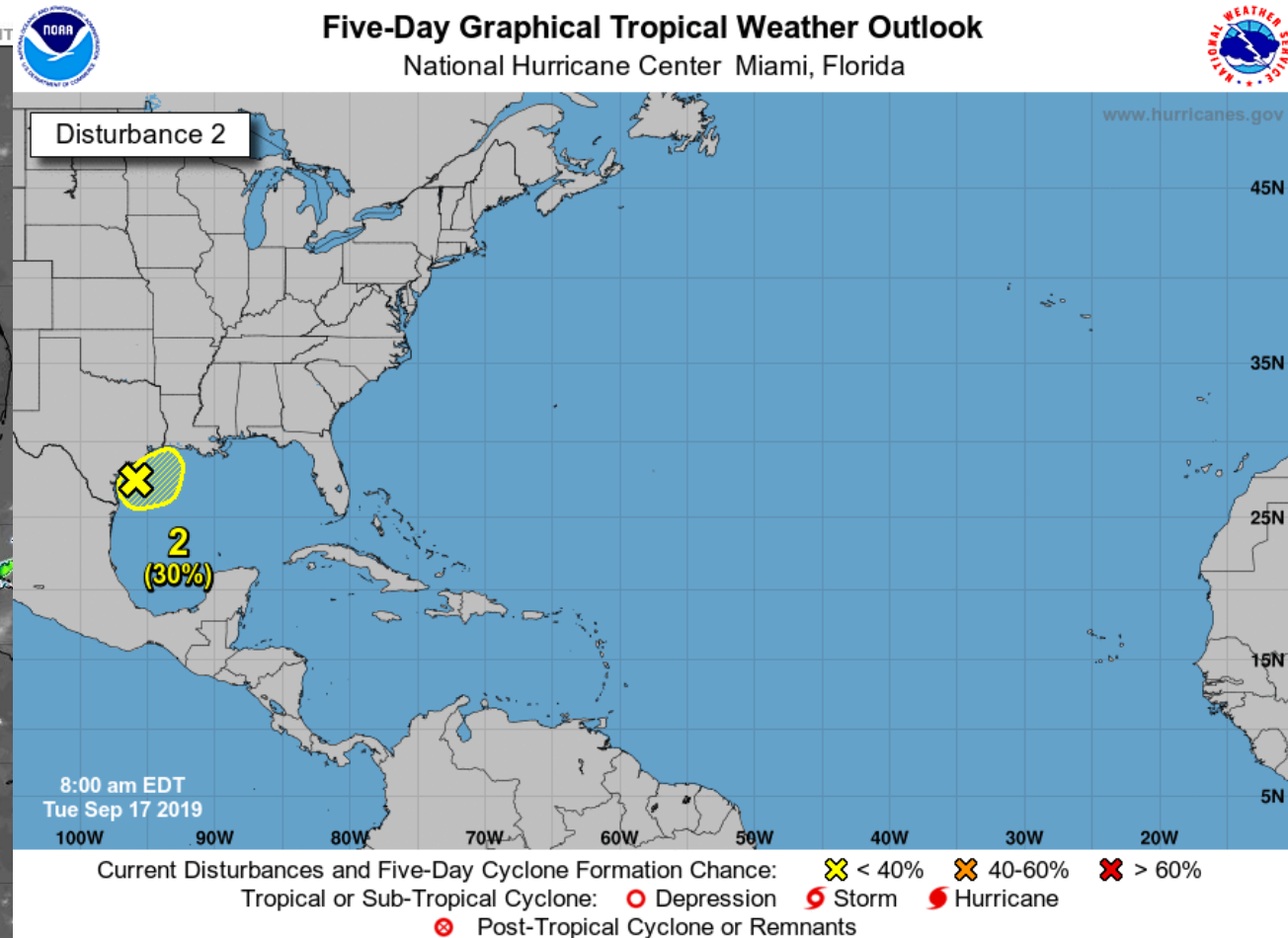
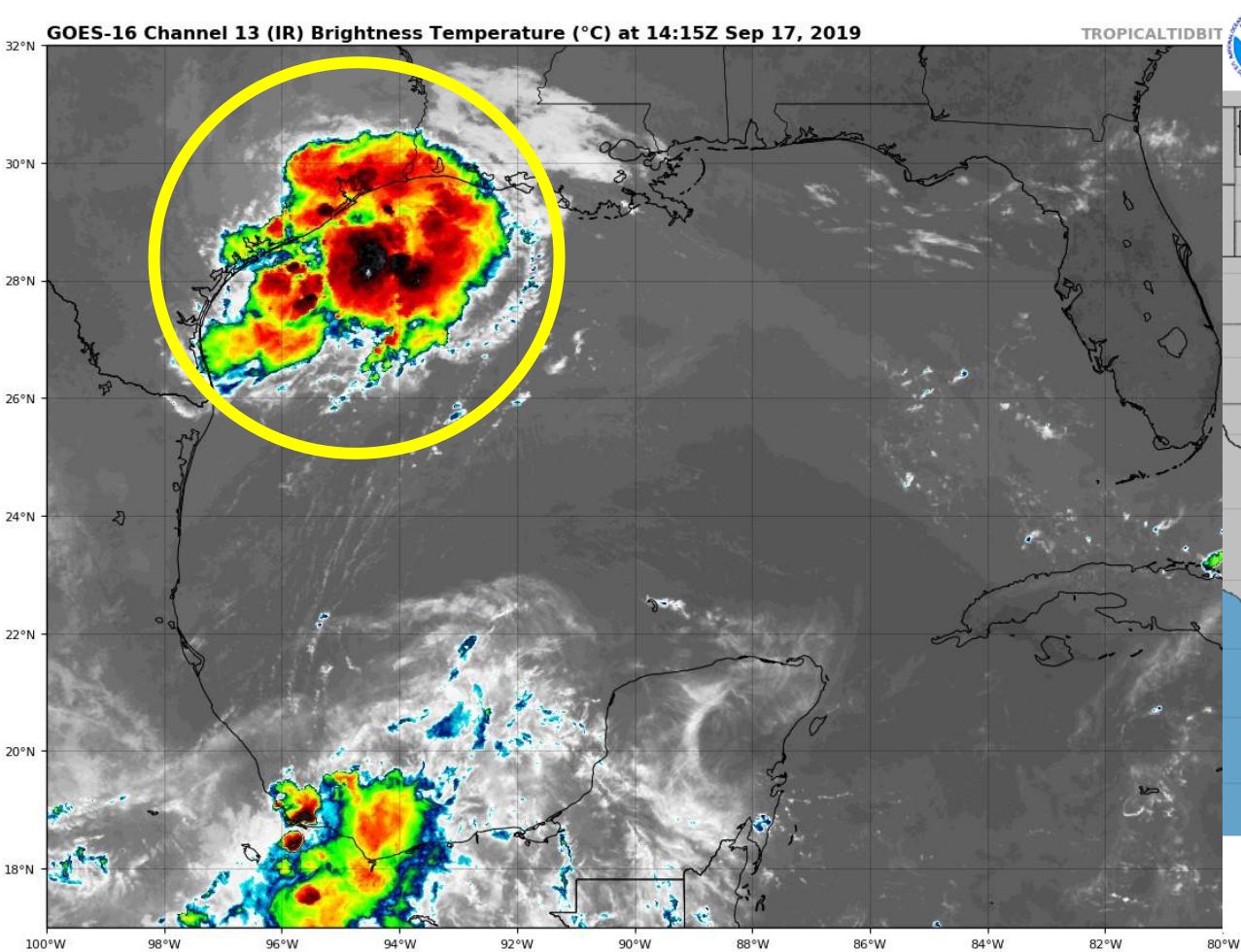
Initialized at 12z Sep 17 2019

Levi Cowan - tropicaltidbits.com



Warm ocean temperatures and favorable upper-level winds (low wind shear) will allow gradual strengthening of Tropical Depression #10. However, there is some dry air nearby.

Models are in good agreement on track until days 4 and 5 when Tropical Depression #10 is near Puerto Rico. A turn towards the north may occur.



Invest 98L/Gulf of Mexico Disturbance: Shower activity associated with a broad area of low pressure located over the northwestern Gulf of Mexico near the central Texas coast has changed little in organization. However, some slight development is still possible before the system moves inland along the northwestern Gulf coast later tonight or early Wednesday. Regardless of development, this disturbance is expected to produce areas of very heavy rainfall and possible flash flooding in coastal Texas and Louisiana.

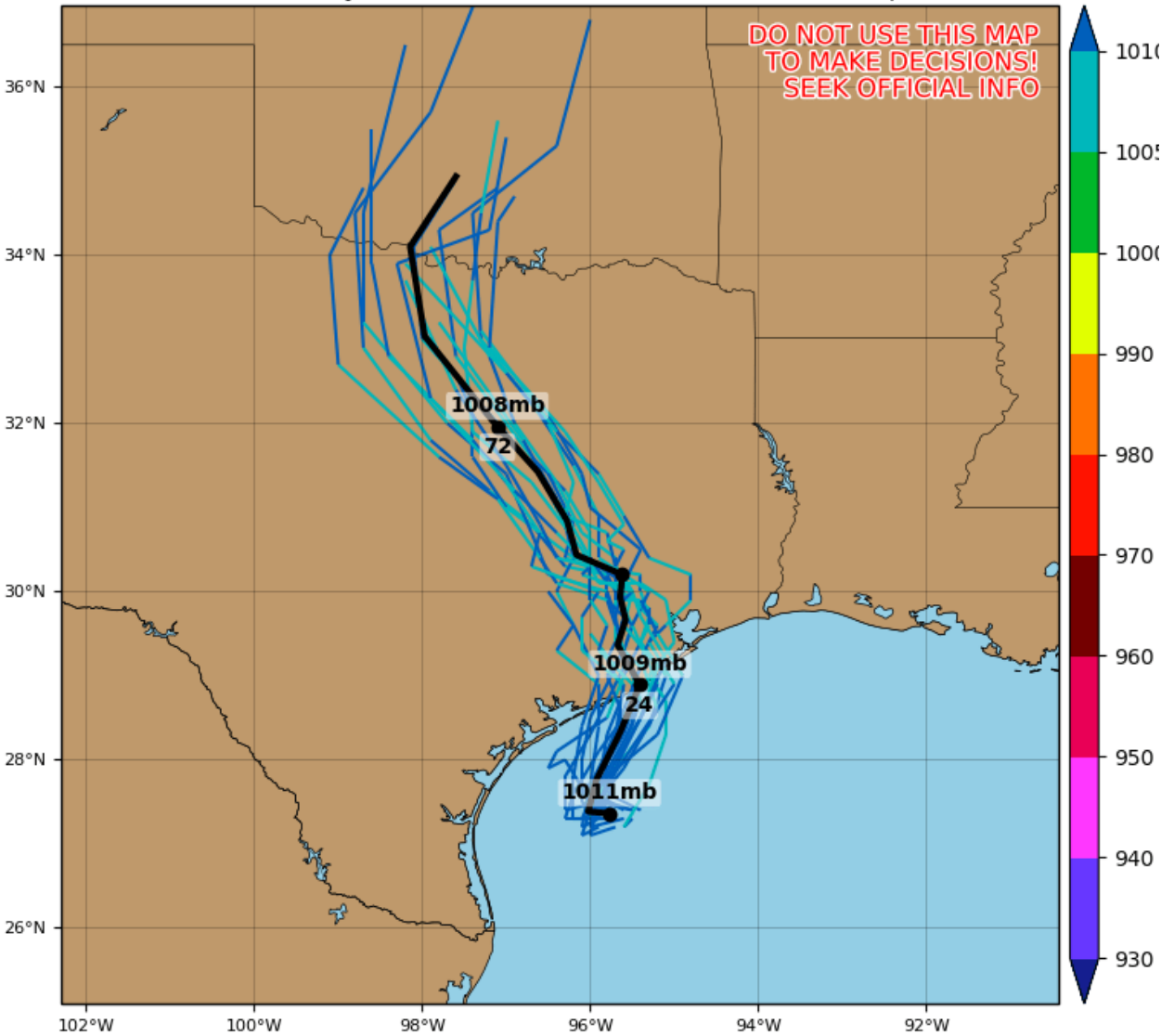
* Formation chance through 48 hours...low...30 percent.

* Formation chance through 5 days...low...30 percent.

Invest 98L GEFS Tracks & Min. MSLP (mb)

Initialized at 00z Sep 17 2019

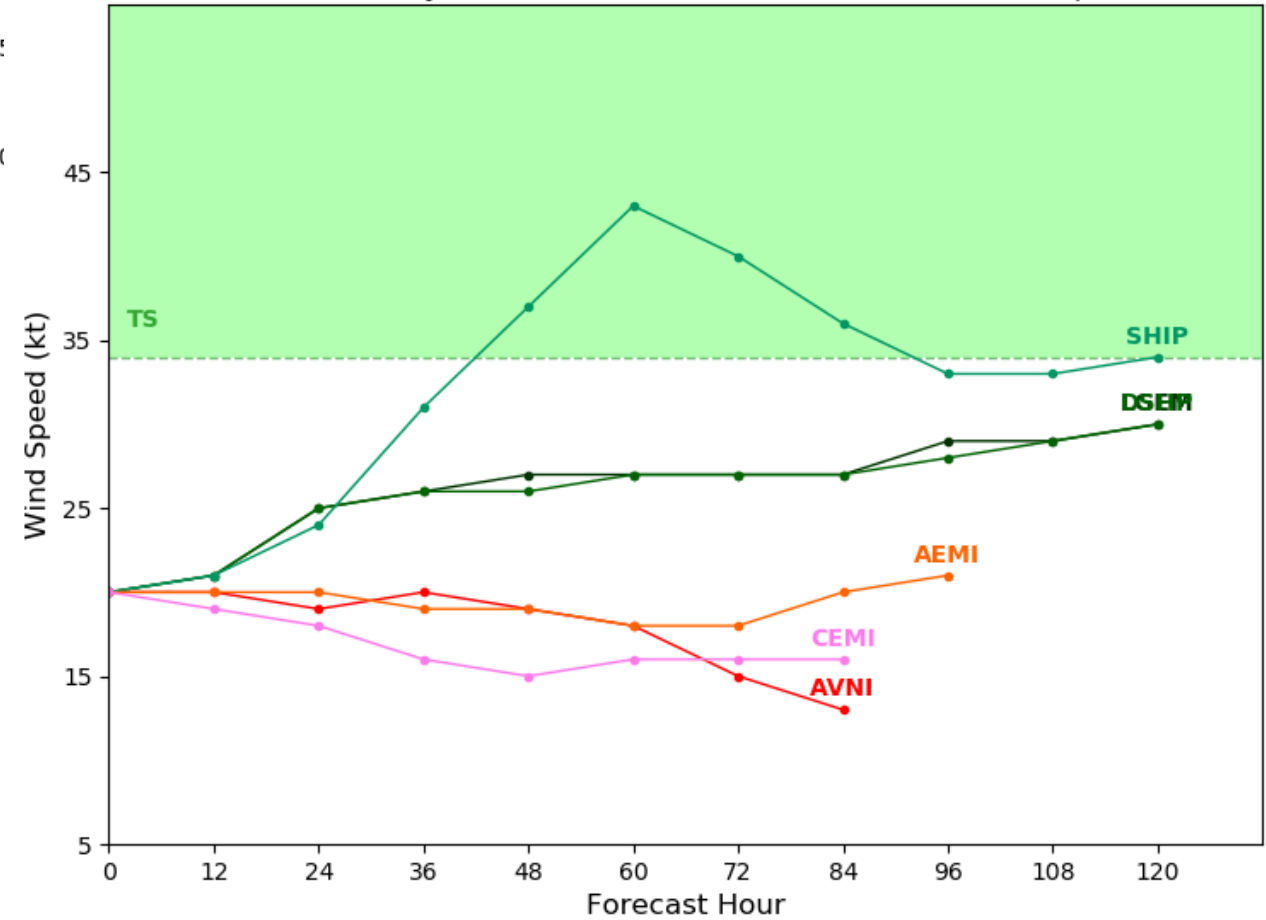
Levi Cowan - tropicaltidbits.com



Invest 98L Model Intensity Guidance

Initialized at 06z Sep 17 2019

Levi Cowan - tropicaltidbits.com



There is minimal time for development of Invest 98L. However, there is still a low chance that a tropical depression or tropical storm develops today or tomorrow before the system moves inland over Texas.

Summary

Hurricane Humberto

- Humberto is located about 525 miles west of Bermuda, and is moving east-northeast at 7 mph. This northeastward motion will continue for the next few days along with a gradual increase in forward speed.
- Maximum sustained winds have increased to 100 mph (Category 2). Additional strengthening is expected.
- This system will remain well away from the U.S. East Coast, but will pass very near to Bermuda Wednesday night.

Tropical Depression #10

- The tropical wave located about halfway between the Caribbean and Africa (formerly Invest 97L or the Eastern Atlantic wave) developed a closed circulation with persistent showers and thunderstorms over the last 12-24 hours. At 11 AM ET, advisories began on Tropical Depression #10.
- TD #10 is located about 1165 miles east of the Leeward Islands and moving to the west at 12 mph. The system will continue to the west-northwest, moving near the northern Lesser Antilles in about 3 days. There is more disagreement in model track towards day 5 as the system may make a turn to the north.
- Maximum sustained winds are at 35 mph. Gradual strengthening is forecast, with the system becoming a tropical storm later today and a hurricane by Friday.

Invest 98L/Gulf of Mexico Disturbance

- Shower activity associated with a broad area of low pressure located over the northwestern Gulf of Mexico near the central Texas coast has changed little in organization. However, some slight development is still possible before the system moves inland along the northwestern Gulf coast later tonight or early Wednesday.
- NHC gives it a 30% (low) chance of development over the next 48 hours. Regardless of development, heavy rainfall is expected in coastal Texas and Louisiana.

Florida Outlook:

- High surf and dangerous rip currents are expected at Atlantic beaches for much of this week thanks to Humberto and a cold front that will move through on Thursday.
- Minor coastal flooding at high tide in the St. Johns River and its tributaries through Wednesday morning.
- The next names on the list are Imelda (ee-MEHL-dah) and Jerry.
- There will be no impacts to Florida from Invest 98L/Gulf of Mexico Disturbance.
- It is too early to determine if there will be any impacts from Tropical Depression 10. Impacts, if any, are at least 7 days away. The system should be monitored.

The next tropics packet will be issued Wednesday morning. For the latest information on the tropics, please visit the National Hurricane Center website at www.hurricanes.gov. For the latest flood updates, see the latest products from your local National Weather Service, the [Southeast River Forecast Center](#), and the [Weather Prediction Center](#).



TROPICAL UPDATE



Created by:

Michael Spagnolo, Deputy State Meteorologist

Michael.Spagnolo@em.myflorida.com

State Meteorological Support Unit

Florida Division of Emergency Management

Users wishing to subscribe (approval pending) to this distribution list, register at:

https://public.govdelivery.com/accounts/FLDEM/subscriber/new?topic_id=SERT_Met_Tropics.

Other reports available for subscription are available at:

<https://public.govdelivery.com/accounts/FLDEM/subscriber/new?preferences=true>