



# TROPICAL UPDATE



5 PM EDT

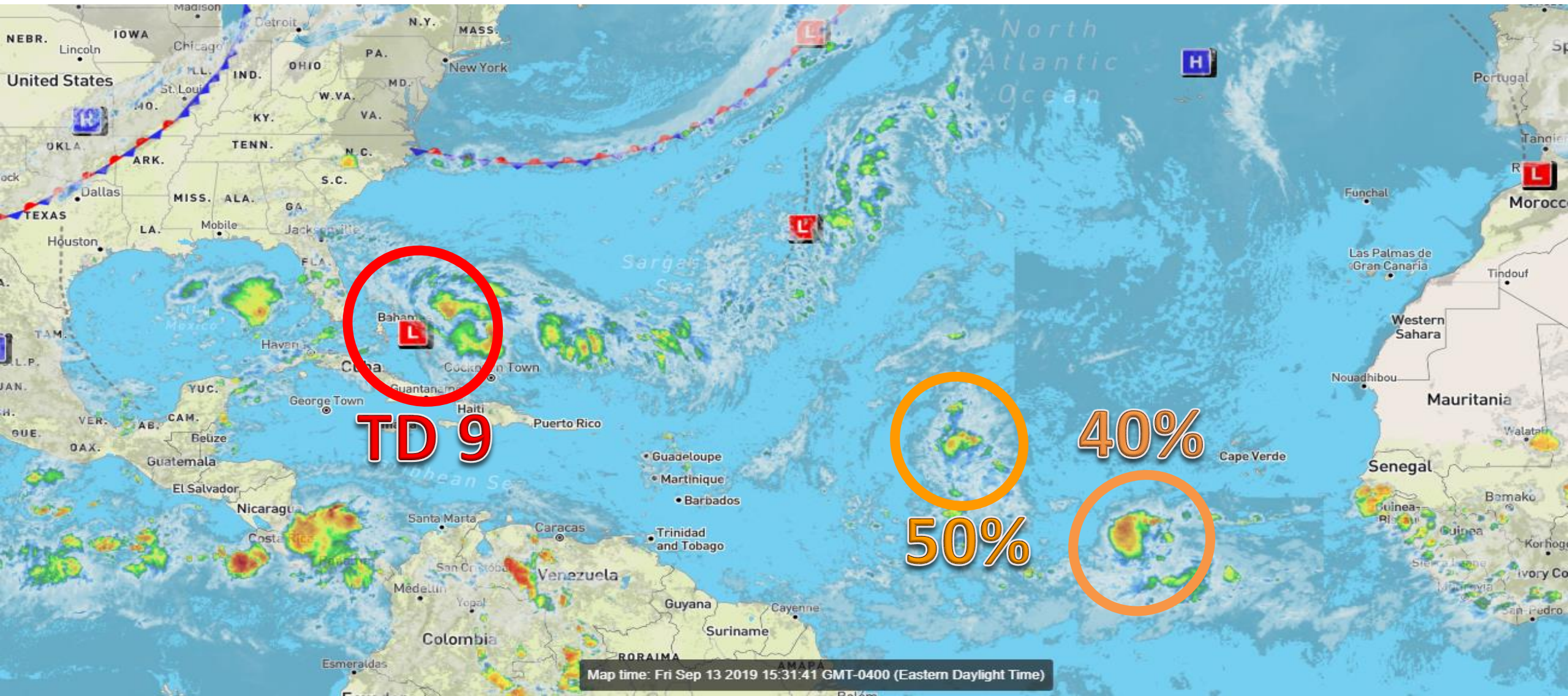
Friday, September 13, 2019

Tropical Depression #9, Invest 96L (50%), Cabo Verde Wave (40%)

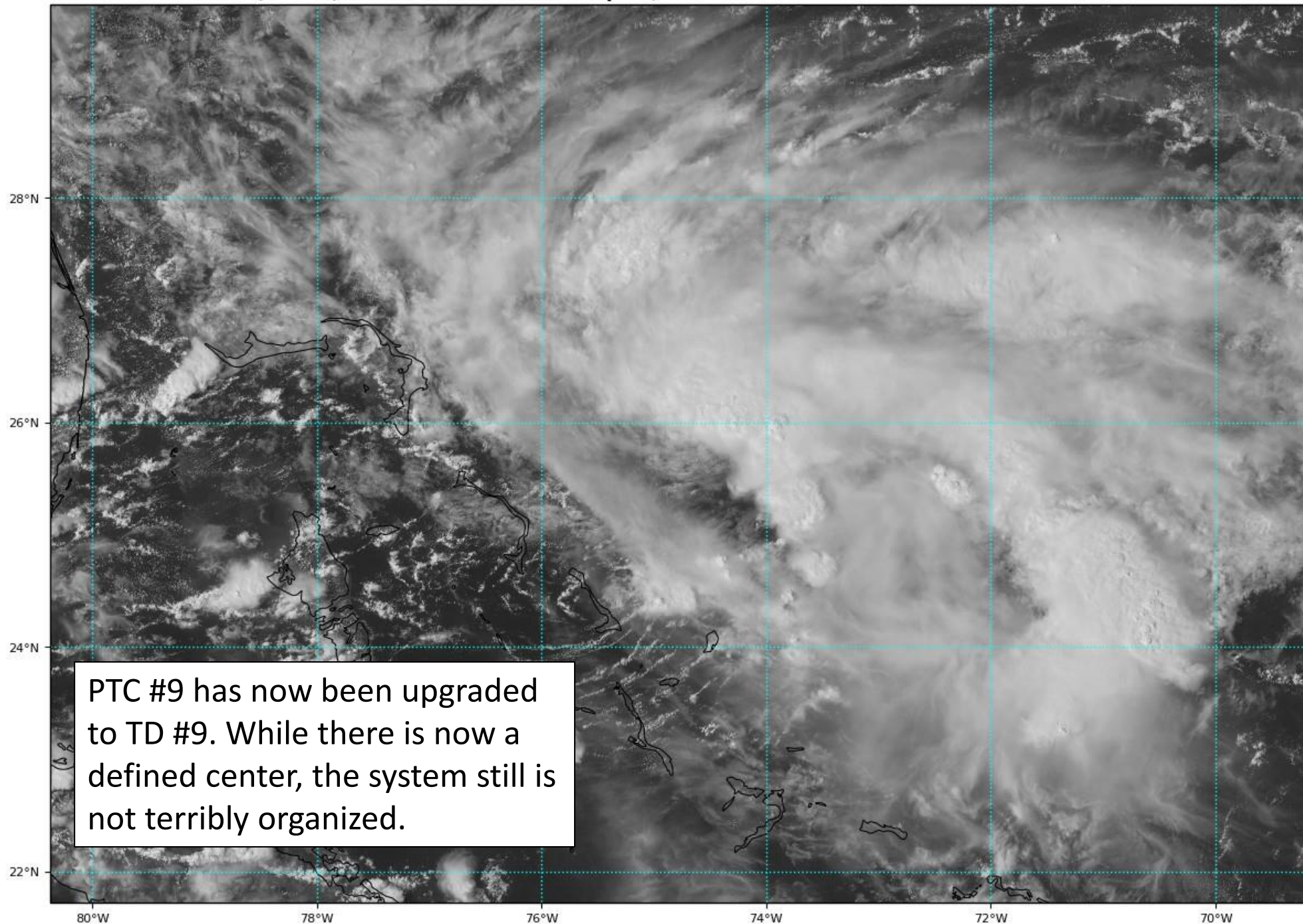
This update is intended for government and emergency response officials, and is provided for informational and situational awareness purposes only. Forecast conditions are subject to change based on a variety of environmental factors. For additional information, or for any life safety concerns with an active weather event please contact your County Emergency Management or Public Safety Office, local National Weather Service forecast office, or visit the National Hurricane Center website at [www.hurricanes.gov](http://www.hurricanes.gov).

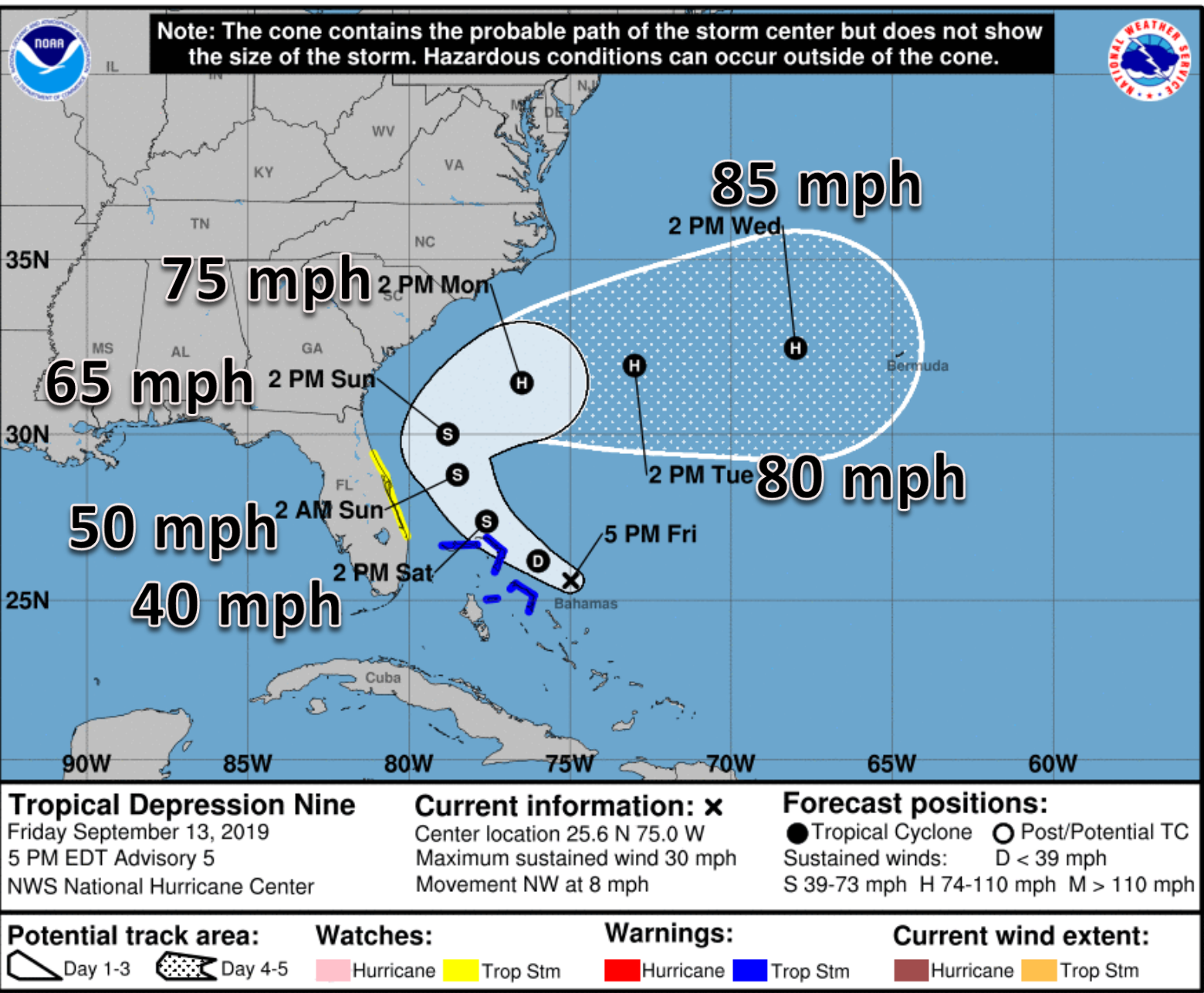
# Atlantic Basin Satellite Image

Chance of development: — None    — Low    — Medium    — High





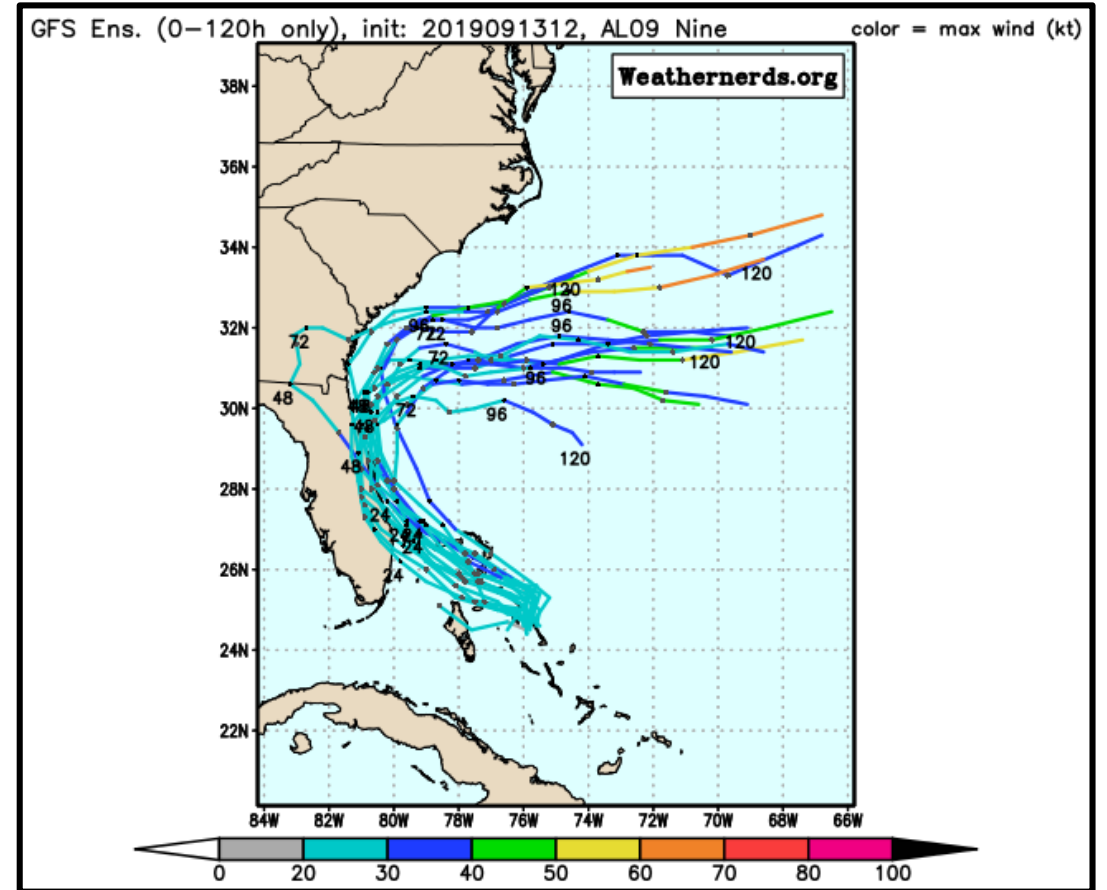
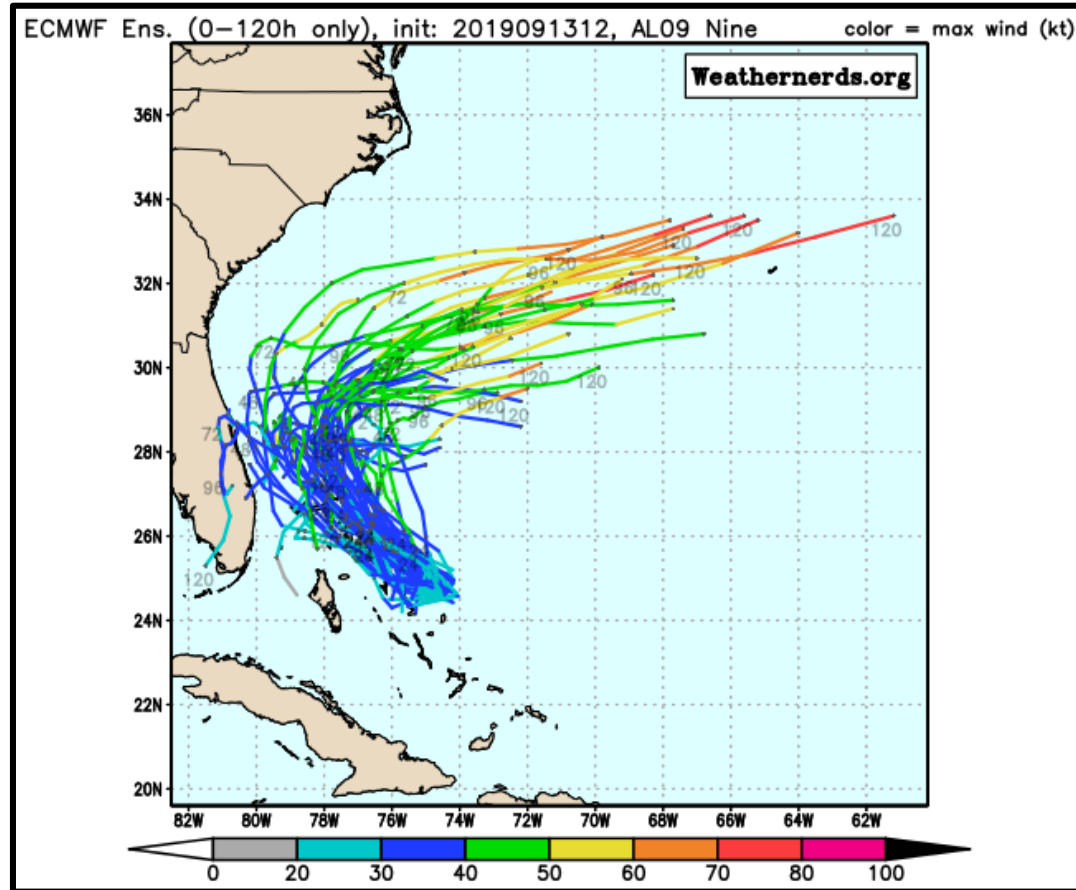




**Tropical Depression #9:** Hurricane Hunters have now found a defined closed center, and the system has been upgraded to Tropical Depression #9. TD 9 has now resumed a northwestward motion at 8 mph. A turn toward the north-northwest is expected Saturday. Maximum sustained winds remain near 30 mph. Strengthening into a tropical storm is expected Saturday. The track has continued shifting to the east, and NHC advises that “it remains on the western edge of the guidance envelope.” The next name on the list is Humberto.



# PTC #9 Model Track Guidance



The models have come into better agreement on the eventual track of PTC #9. Most models now keep the center of the storm offshore. This trend has continued today.

# Chance for Tropical Storm Force Winds (39+ mph)

Tropical Storm Force winds may start as early as Friday night along parts of the Florida East Coast and as early as Saturday morning in Northeast Florida.

**DECREASED** from 11 AM

**Miami: 0%**

**Ft. Lauderdale: 10%**

**West Palm Beach: 15%**

**Fort Pierce: 22%**

**Cocoa Beach: 29%**

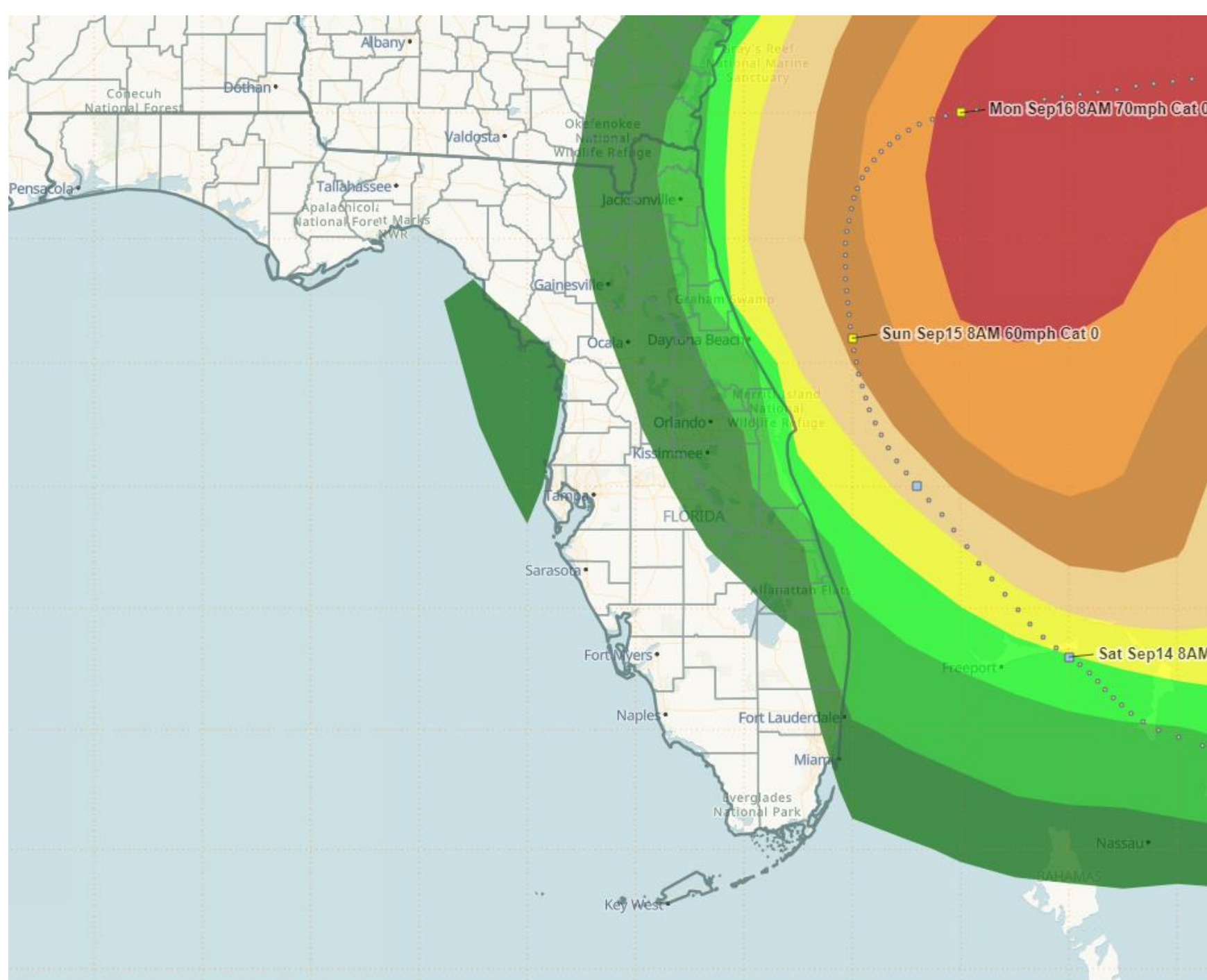
**Orlando: 8%**

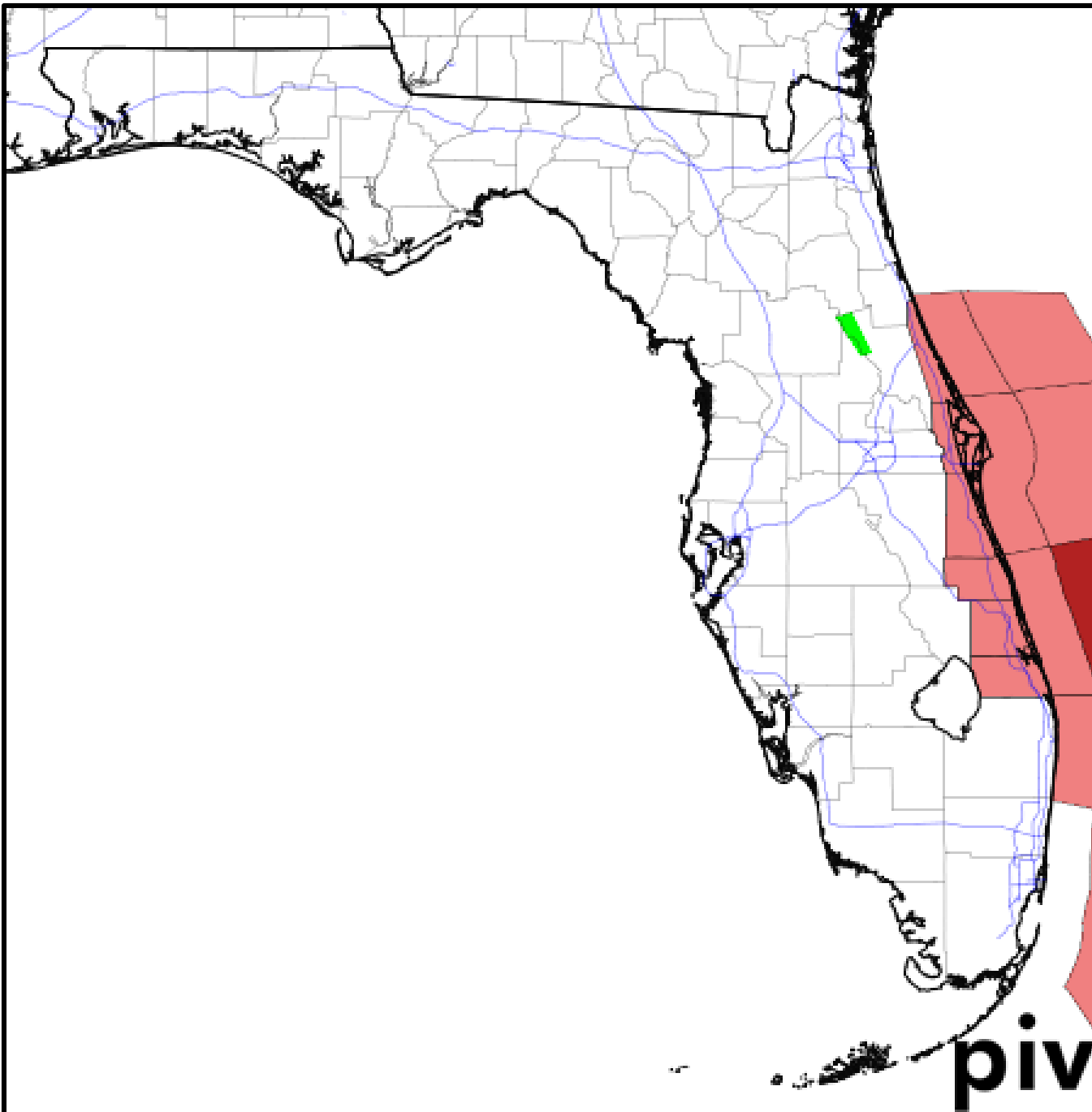
**Tampa: 3%**

**Naples: 0%**

**Jacksonville: 10%**

**Tallahassee: 0%**



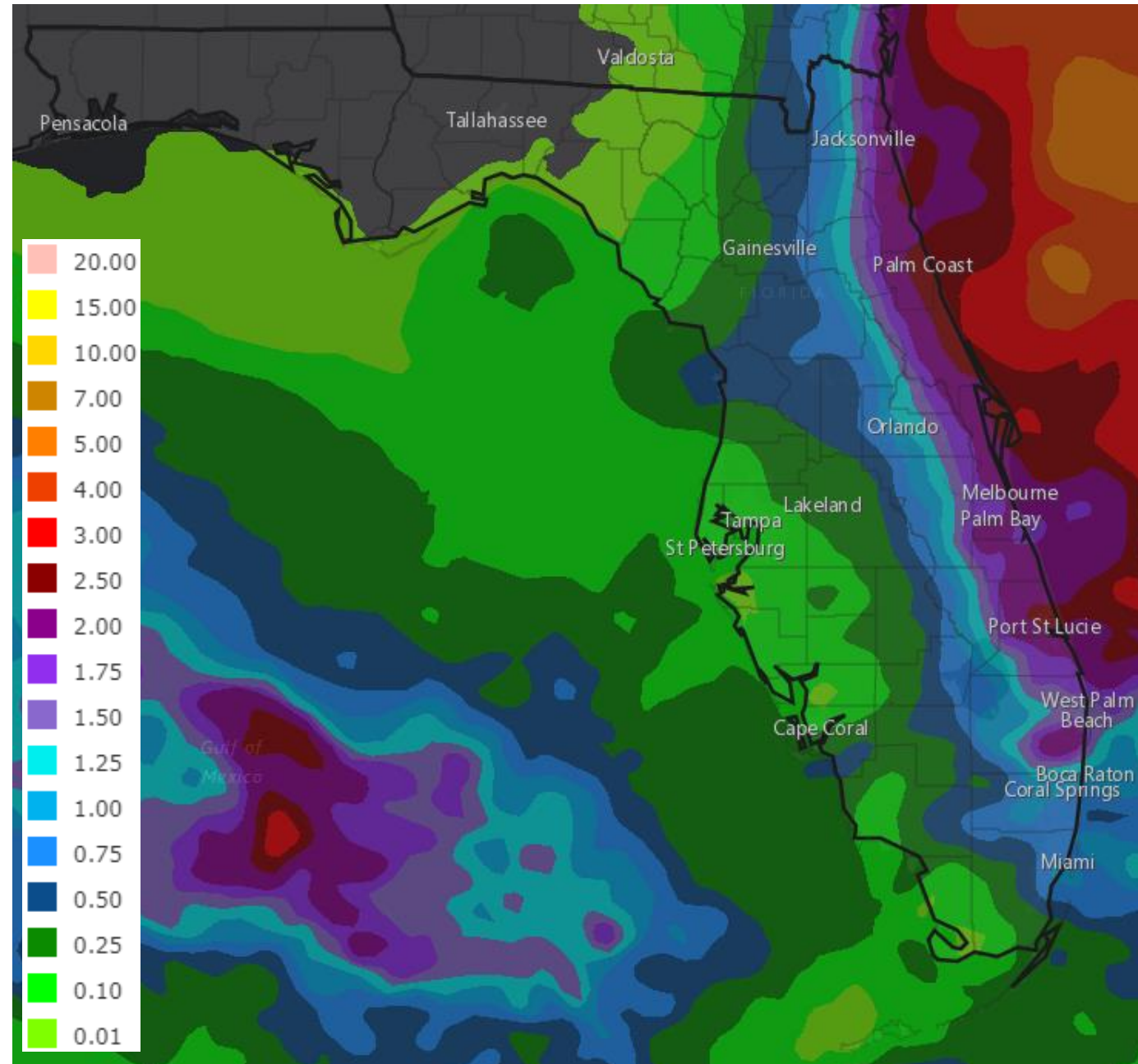


**Tropical Storm Watches:** coastal Volusia, Brevard, Indian River, St. Lucie, and Martin Counties

**River Flood Warning:** St. Johns River near Astor

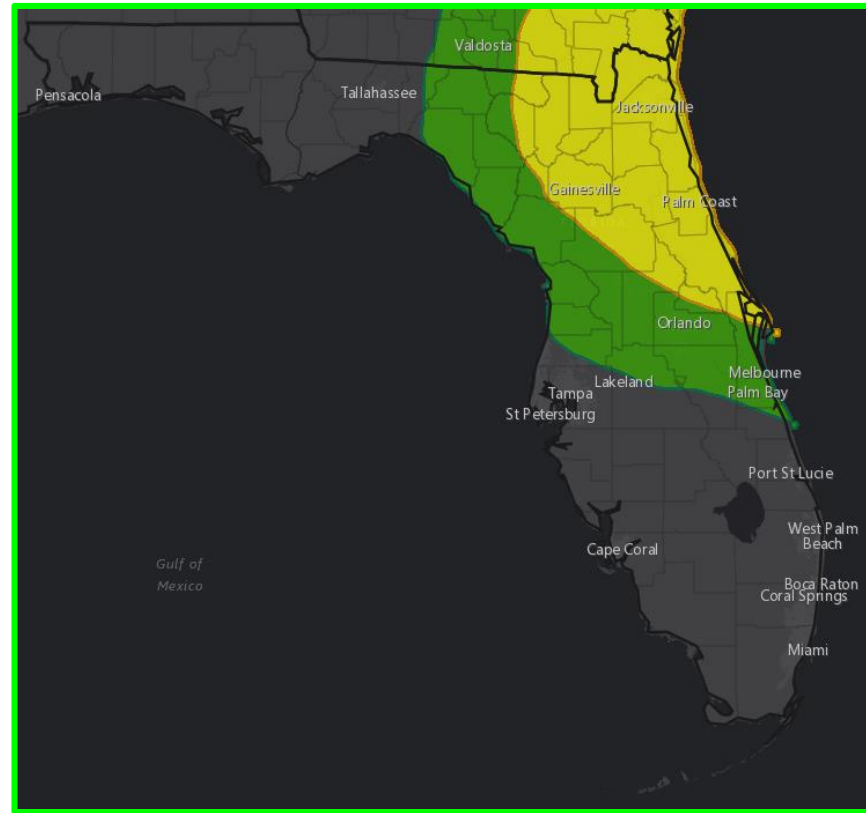
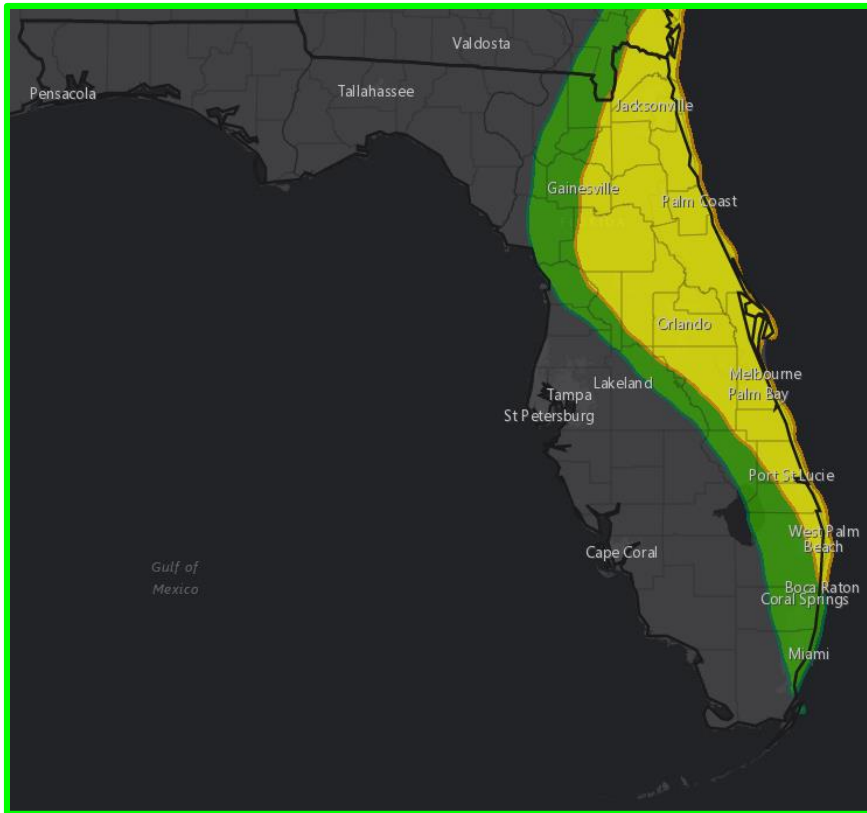
# Rainfall Forecast Next 5 Days

The heaviest rainfall will be confined to the East Coast. 1-2" of rain is expected along the East Coast. If heavier rainfall materializes, then localized flooding may occur. **Rainfall totals have been decreasing as the eastward shift continues.**





# Flash Flood Outlooks This Weekend



## MARGINAL (MRGL)

Isolated flash  
floods possible

Localized and  
primarily affecting  
places that can  
experience rapid  
runoff with heavy  
rainfall.

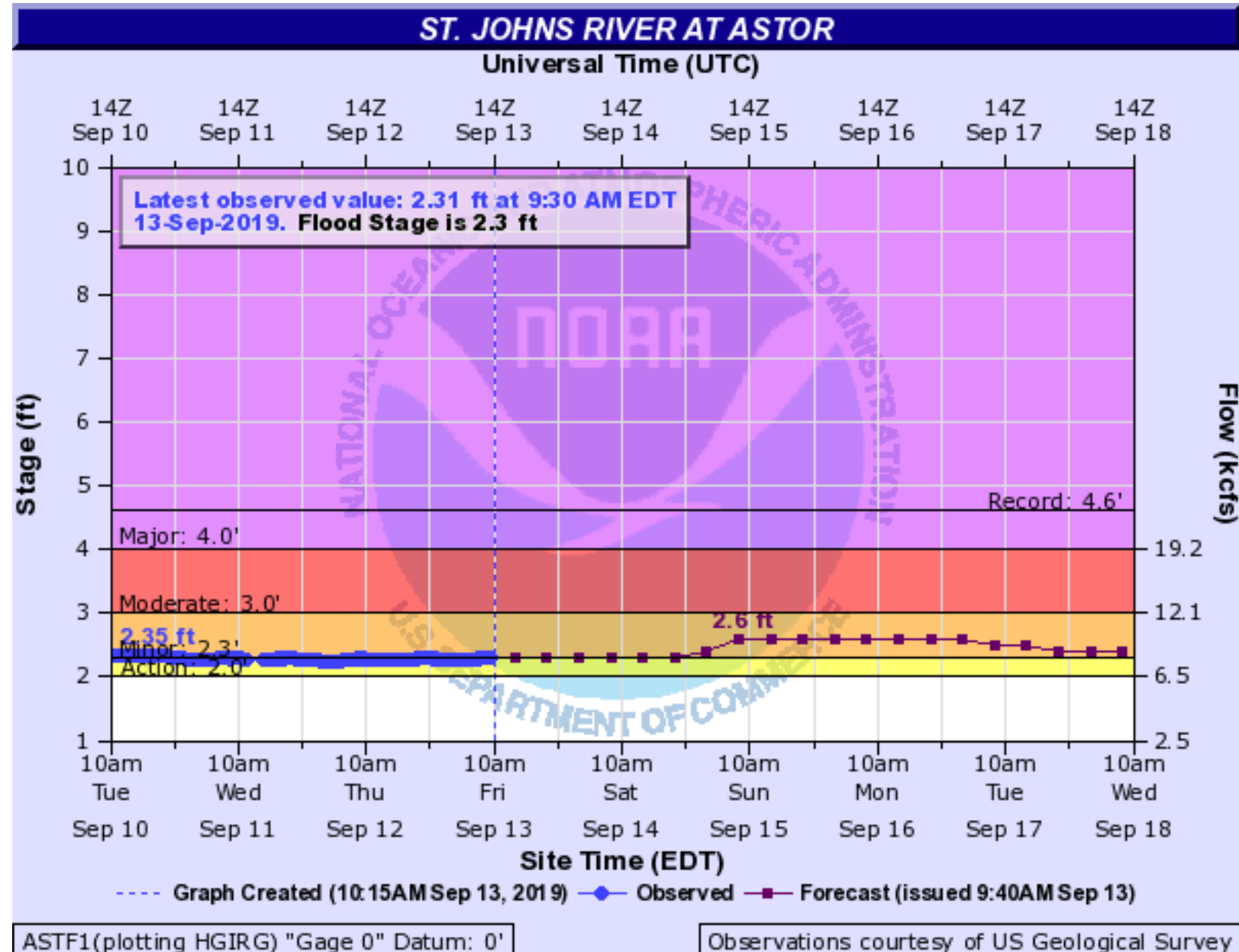
## SLIGHT (SLGT)

Scattered flash  
floods possible

Mainly localized. Most  
vulnerable are urban  
areas, roads, small  
streams and washes.  
Isolated significant  
flash floods possible.

The Weather Prediction Center has outlined the entire East Coast in a Marginal Risk of flash flooding (level 1 of 4) to a Slight Risk of flash flooding (level 2 of 4) for Saturday. This also extends inland to north of the Turnpike and east of I-75. On Sunday, the risk shifts northward into Central and Northeast Florida. **This threat is decreasing with further east shifts in the track.**

# St. Johns River at Astor



The St. Johns River at Astor remains in minor flood stage from Hurricane Dorian. While it will remain steady today, locally heavy rainfall could cause the river to rise over the weekend. Minor flooding is occurring and minor flooding is forecast to continue into next week.

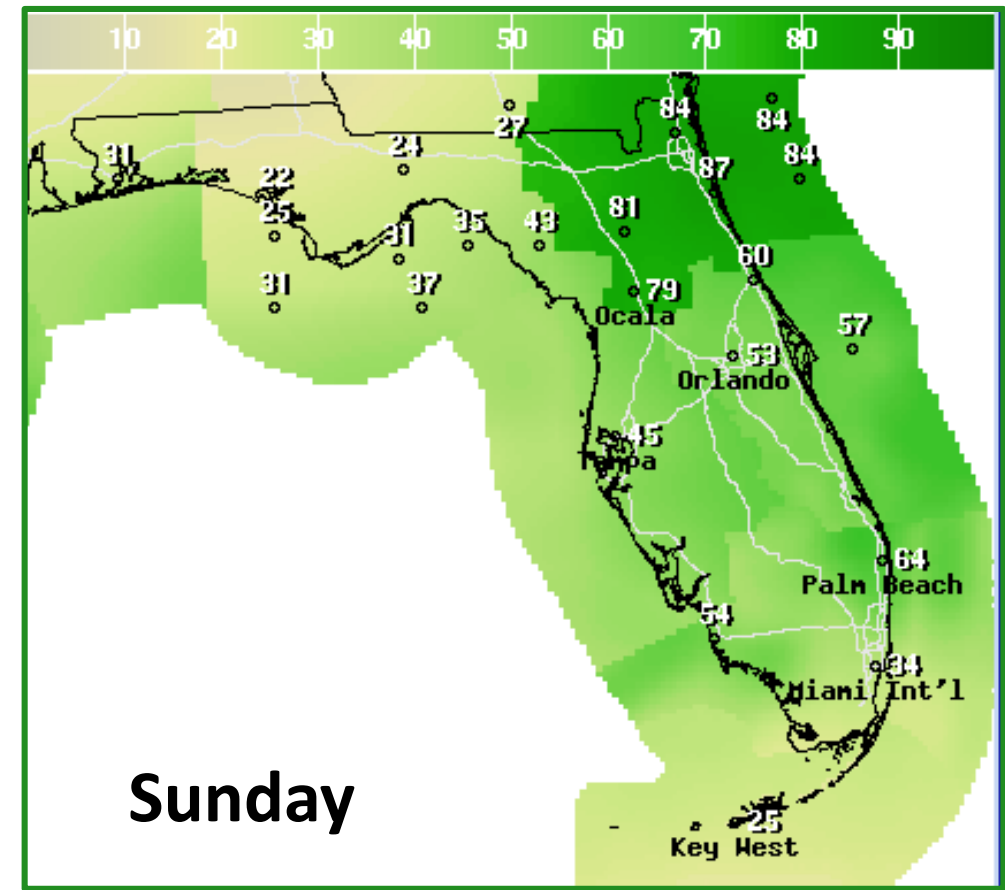
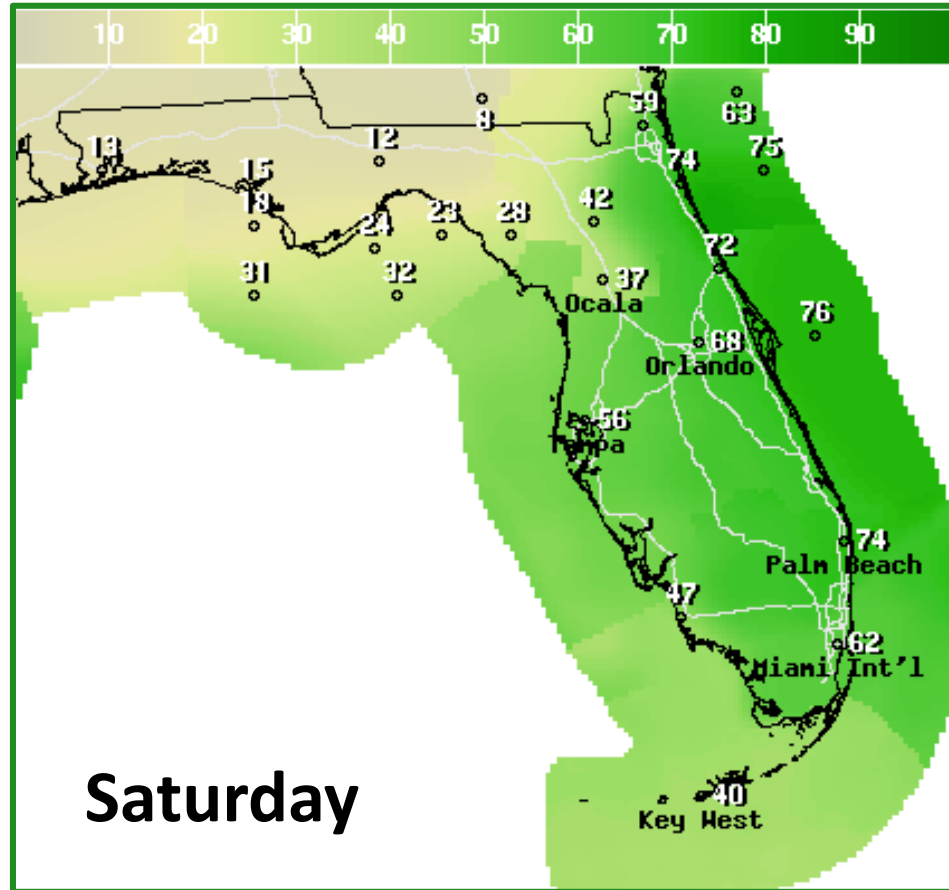


# Severe Weather Outlooks This Weekend



The Storm Prediction Center has outlined the East Coast in a Marginal Risk of severe weather (level 1 of 5) on Saturday and the First and Space Coasts in a Marginal Risk on Sunday. Isolated tornadoes will be possible in some of the outer bands of TD #9. **However, this threat is decreasing.**

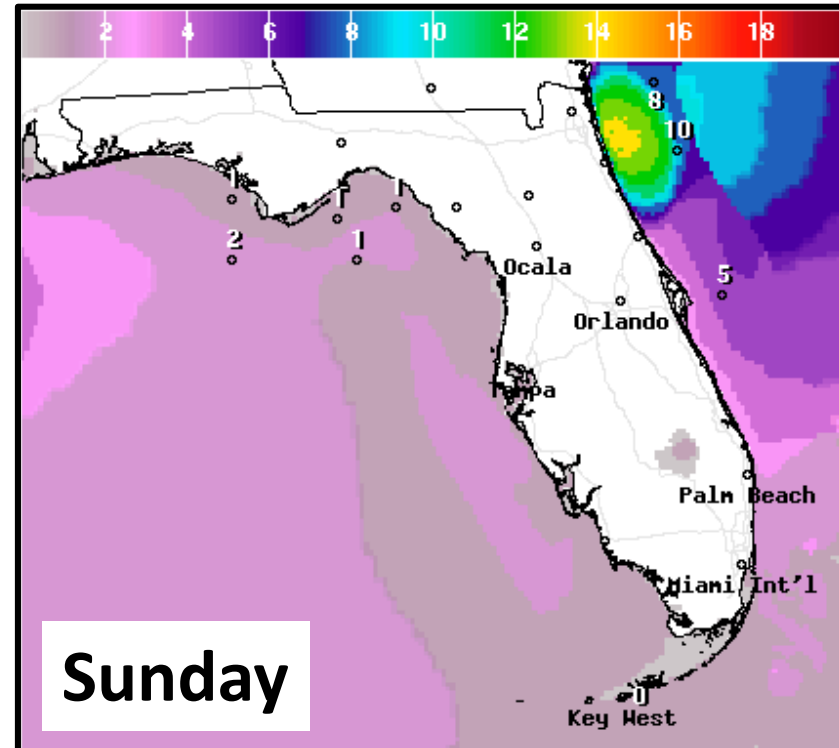
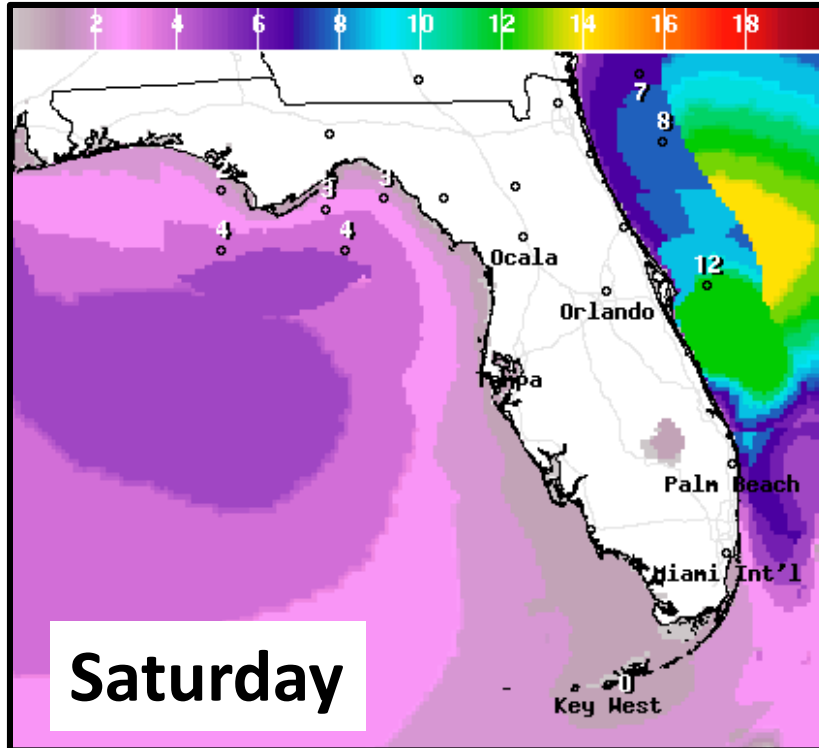
# Forecast Rain Chances Through the Weekend



Rain chances will increase through late this week over the Peninsula, then across the entire state this weekend. Heavy squalls from PTC #9 will bring locally heavy downpours and gusty winds over tropical storm force. **The trend, however, is toward lower rain chances as the track moves eastward.**

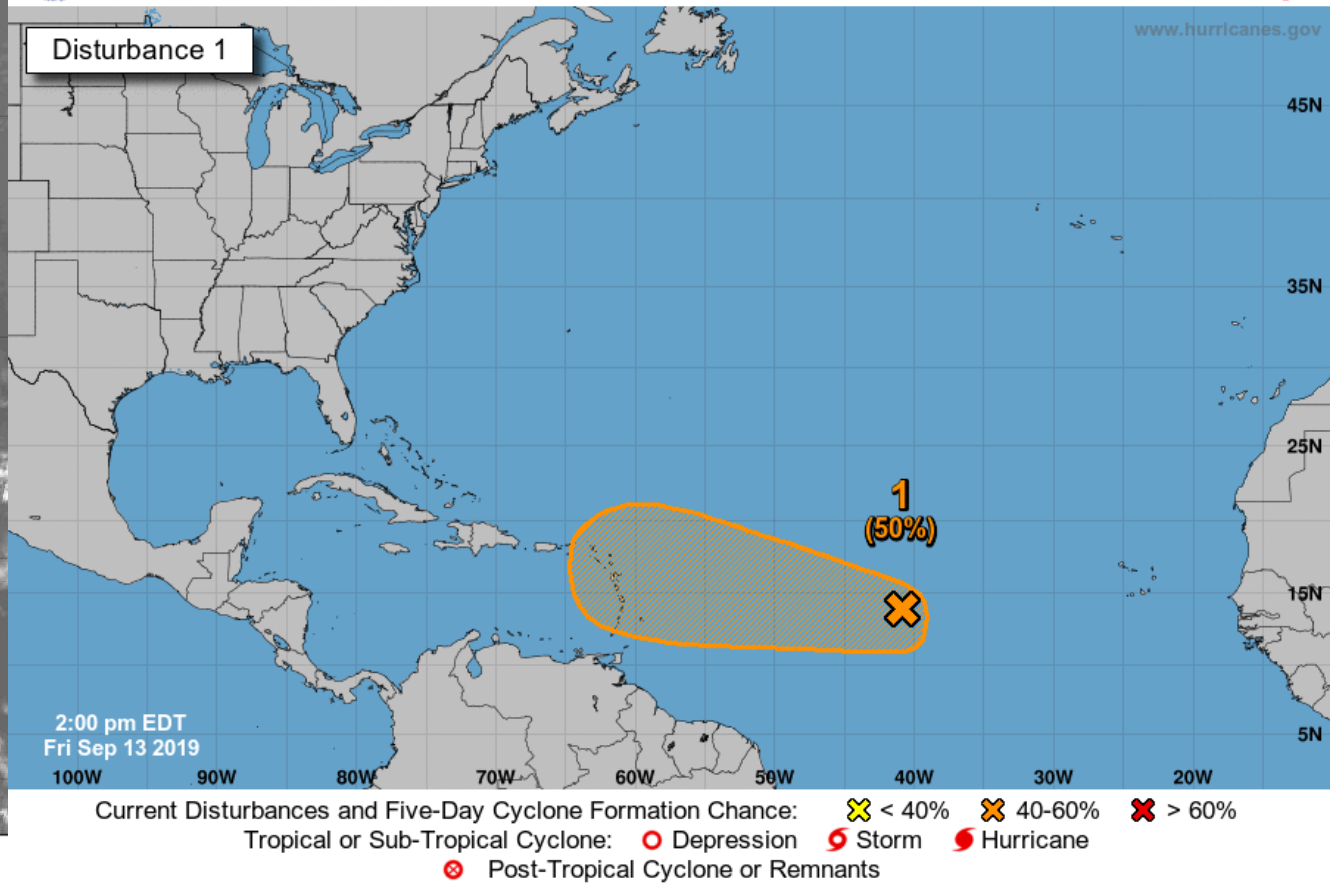
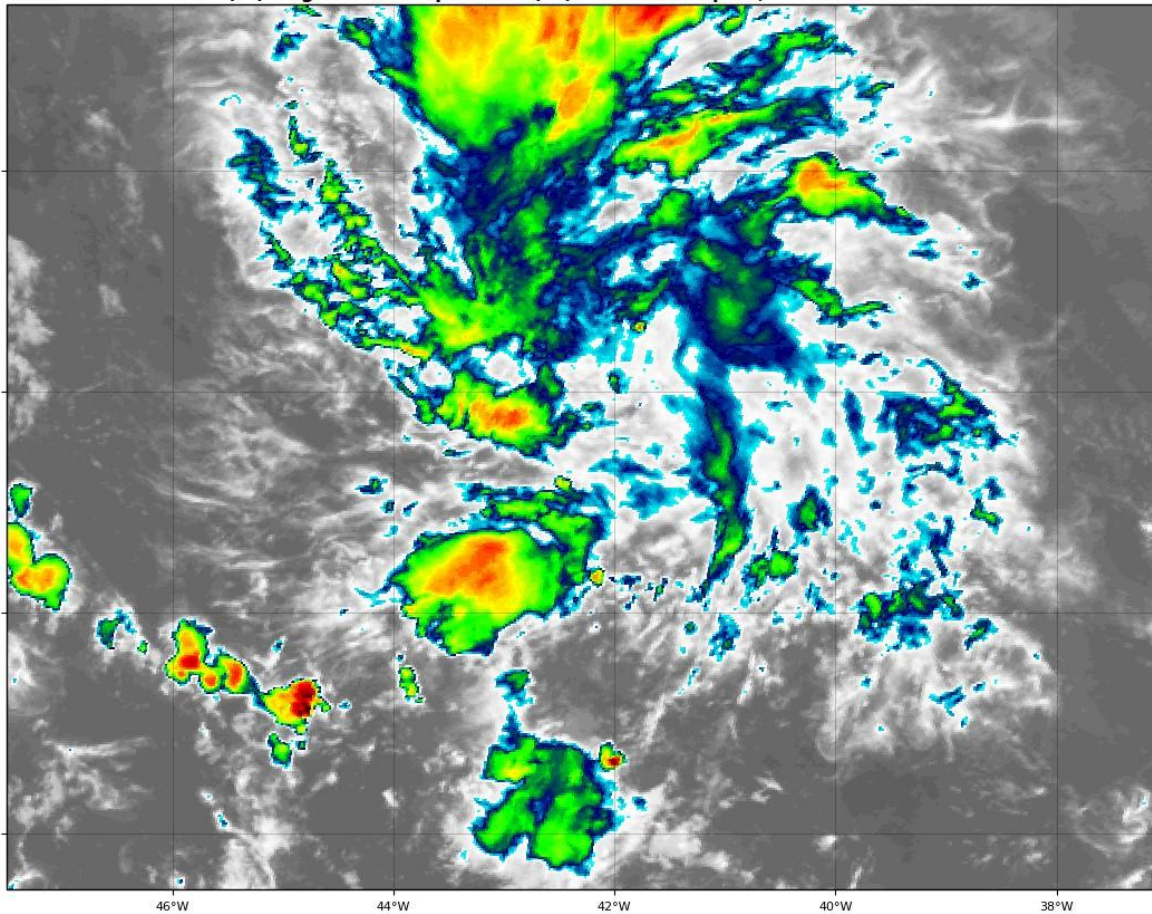


# Forecast Wave Heights



As PTC #9 approaches the East Coast, building waves and a **high risk for dangerous rip currents** are expected this weekend along East Coast beaches. High surf may cause additional minor beach erosion along the East Coast. These risks will continue regardless of any shifts in track.

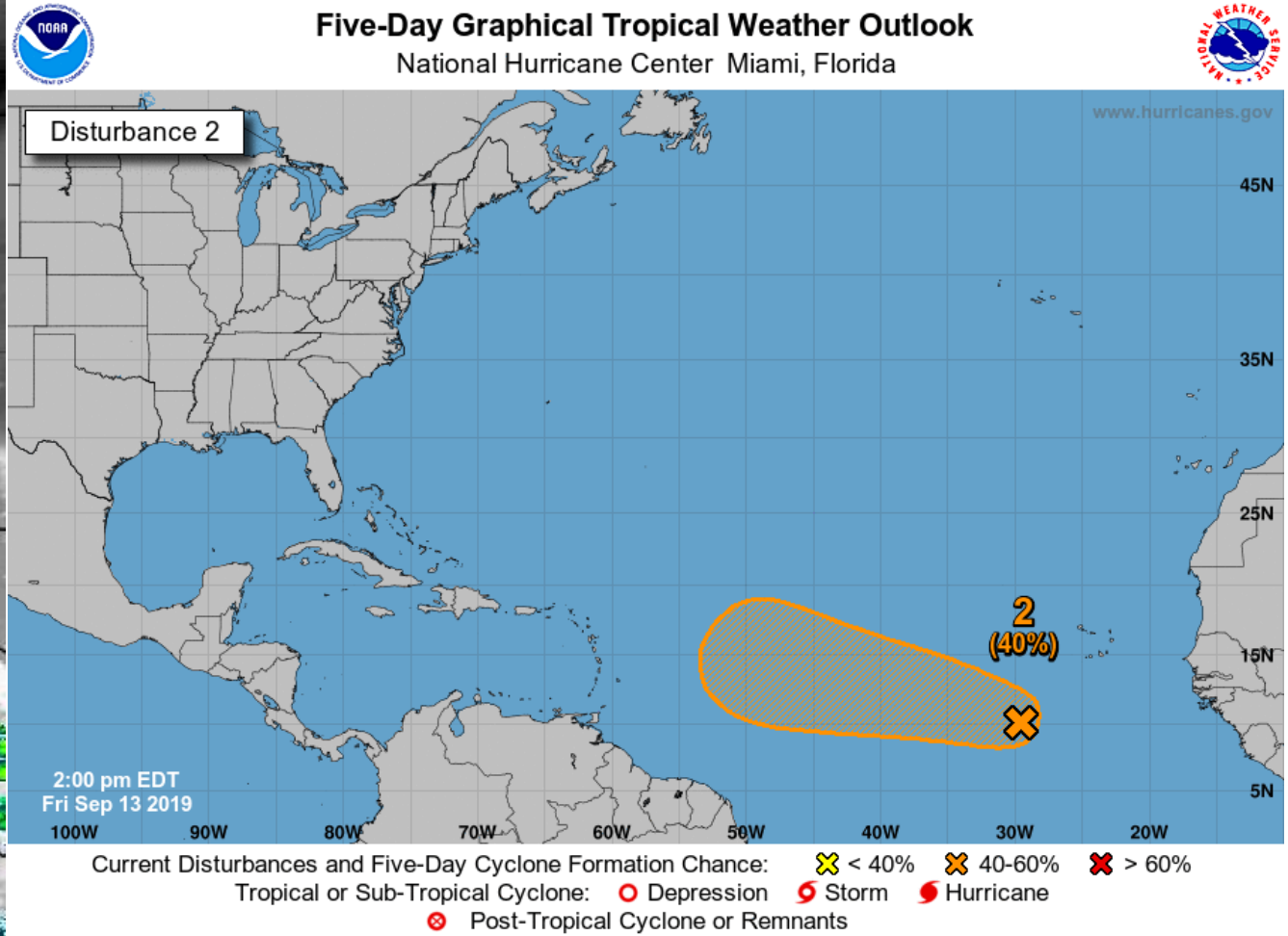
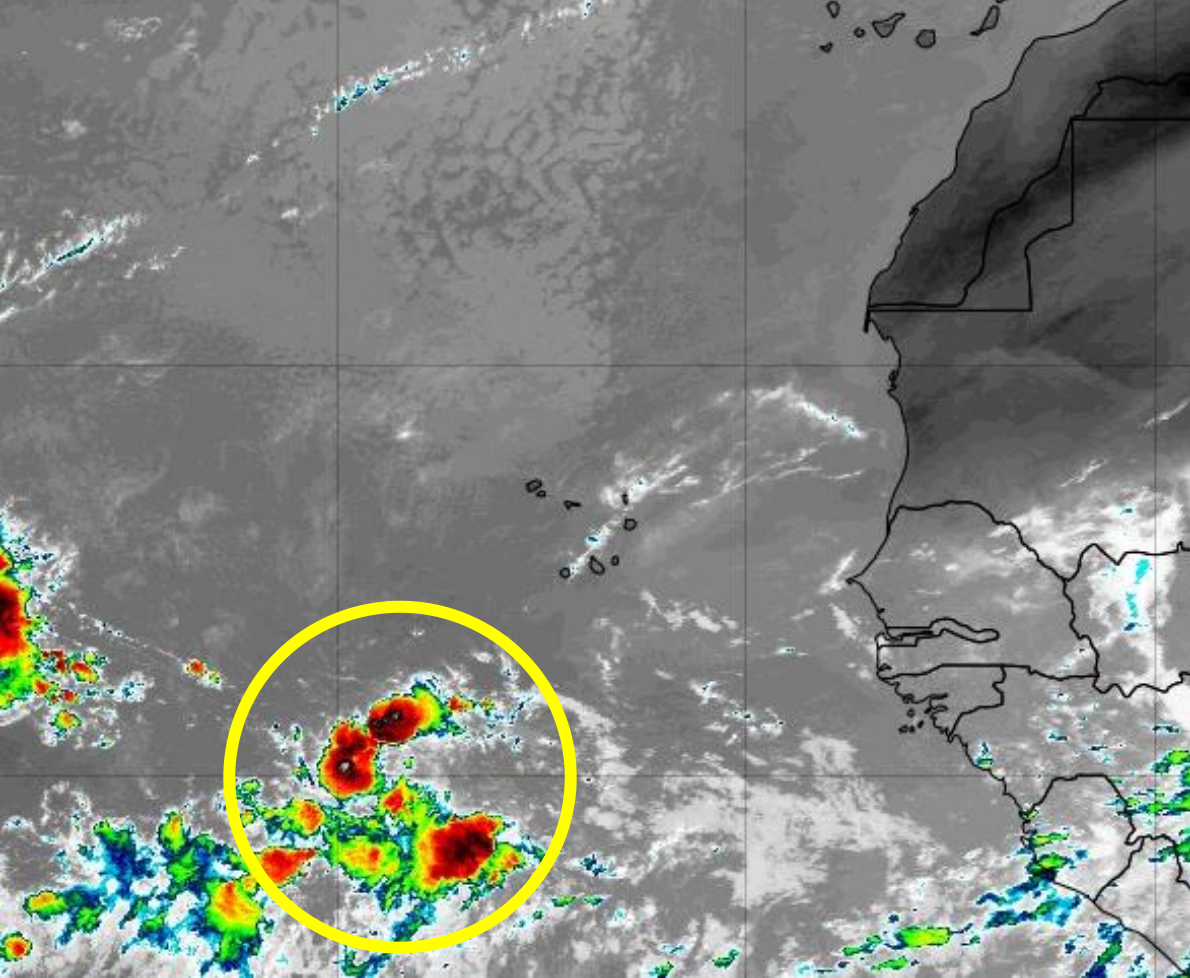
16°N  
14°N  
12°N  
10°N



**Invest 96L**: A tropical wave located midway between the Cabo Verde Islands and the Lesser Antilles is producing a large but disorganized area of cloudiness and showers. Conditions are expected to become more conducive for development in a couple days, and a tropical depression could form early next week while the system moves westward across the tropical Atlantic and approaches the eastern Caribbean Sea.

- \* Formation chance through 48 hours...low...20 percent.
- \* Formation chance through 5 days...medium...50 percent.





**New Cabo Verde Wave:** Another tropical wave is located several hundred miles southwest of the Cabo Verde Islands. Gradual development of this system is possible during the next several days, and a tropical depression could form early next week while it moves westward across the tropical Atlantic.

- \* Formation chance through 48 hours...low...10 percent.
- \* Formation chance through 5 days...medium...40 percent.

# Summary

## **Tropical Depression #9**

- TD #9 is located about 240 miles east-southeast of Freeport, Grand Bahama Island, moving northwest at 8 mph.
- A turn toward the north-northwest is expected on Saturday. A turn toward the north then northeast is expected on Sunday then a turn toward the east is expected on Monday.
- Maximum sustained winds are near 30 mph. The system is expected to become a tropical storm Saturday morning.
- The track still remains on the western side of the guidance envelope, and the track could still shift farther east.
- Tropical Storm Watches are in effect from the Volusia/Flagler County line to Jupiter Inlet.

## **Invest 96L**

- A tropical wave several hundred miles west of the Cabo Verde Islands will move quickly across the tropical Atlantic and may gradually organize this weekend or early next week.
- The National Hurricane Center is indicating a near 20% (low) chance of development over the next 48 hours, but a 50% (medium) chance from days 3-5. This is an increase since yesterday.

## **Cabo Verde Wave**

- Another tropical wave a few hundred miles south-southeast of the Cabo Verde Islands will also move westward across the tropical Atlantic and may gradually organize this weekend or early next week.
- The National Hurricane Center is indicating a near 10% (low) chance of development over the next 48 hours, but a 40% (medium) chance from days 3-5.

### Florida Outlook:

- Tropical Storm Watches are in effect for the Florida East Coast from the Flagler/Volusia County line southward to Jupiter Inlet. The best chance of sustained tropical storm force winds will be along the immediate East Coast. The threat is decreasing.
  - TD #9 will bring increased rain chances and potentially locally heavy rainfall to the East Coast this weekend with 1-2" possible. The flood threat is decreasing as well.
  - Minor river flooding will be possible along parts of the St. Johns, especially where water levels are still elevated from Hurricane Dorian.
  - Isolated tornadoes will be possible in some of TD #9's outer bands both Saturday and Sunday.
  - Heavy surf and dangerous rip currents are expected along East Coast beaches. This may also cause minor coastal flooding (generally less than 2') and some additional beach erosion. Regardless of any shifts in track, this threat will remain.
  - The next name on the 2019 Atlantic storm name list is Humberto.
- 
- It is too early to determine any impacts from either tropical wave in the Atlantic. It would be at least 7 days before any impacts happen if they occur at all.

The next tropics packet will be issued Saturday morning. For the latest information on the tropics, please visit the National Hurricane Center website at [www.hurricanes.gov](http://www.hurricanes.gov). For the latest flood updates, see the latest products from your local National Weather Service, the [Southeast River Forecast Center](#), and the [Weather Prediction Center](#).





# TROPICAL UPDATE



Created by:

Cameron Young, Assistant State Meteorologist

[Cameron.Young@em.myflorida.com](mailto:Cameron.Young@em.myflorida.com)

State Meteorological Support Unit

Florida Division of Emergency Management

Users wishing to subscribe (approval pending) to this distribution list, register at:

[https://public.govdelivery.com/accounts/FLDEM/subscriber/new?topic\\_id=SERT\\_Met\\_Tropics](https://public.govdelivery.com/accounts/FLDEM/subscriber/new?topic_id=SERT_Met_Tropics).

Other reports available for subscription are available at:

<https://public.govdelivery.com/accounts/FLDEM/subscriber/new?preferences=true>