



TROPICAL UPDATE



11 AM EDT

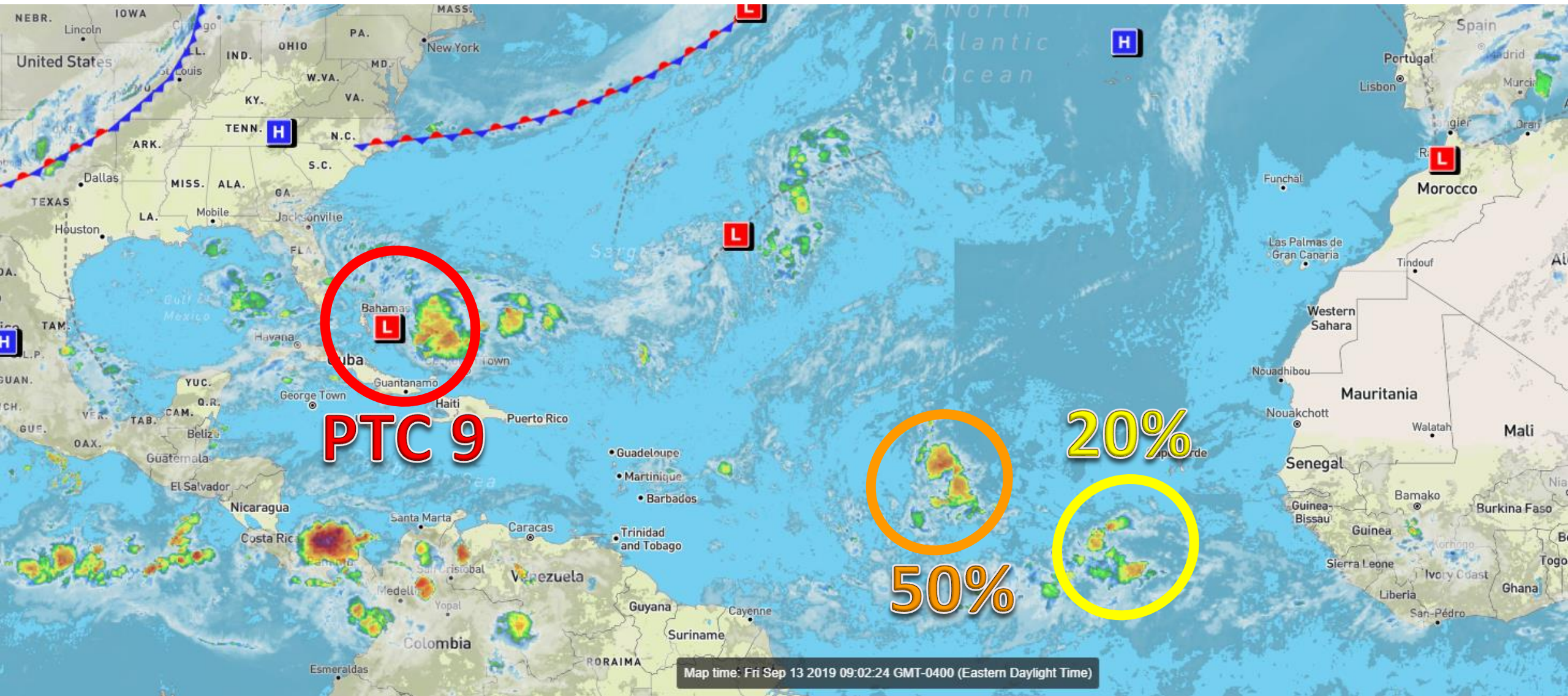
Friday, September 13, 2019

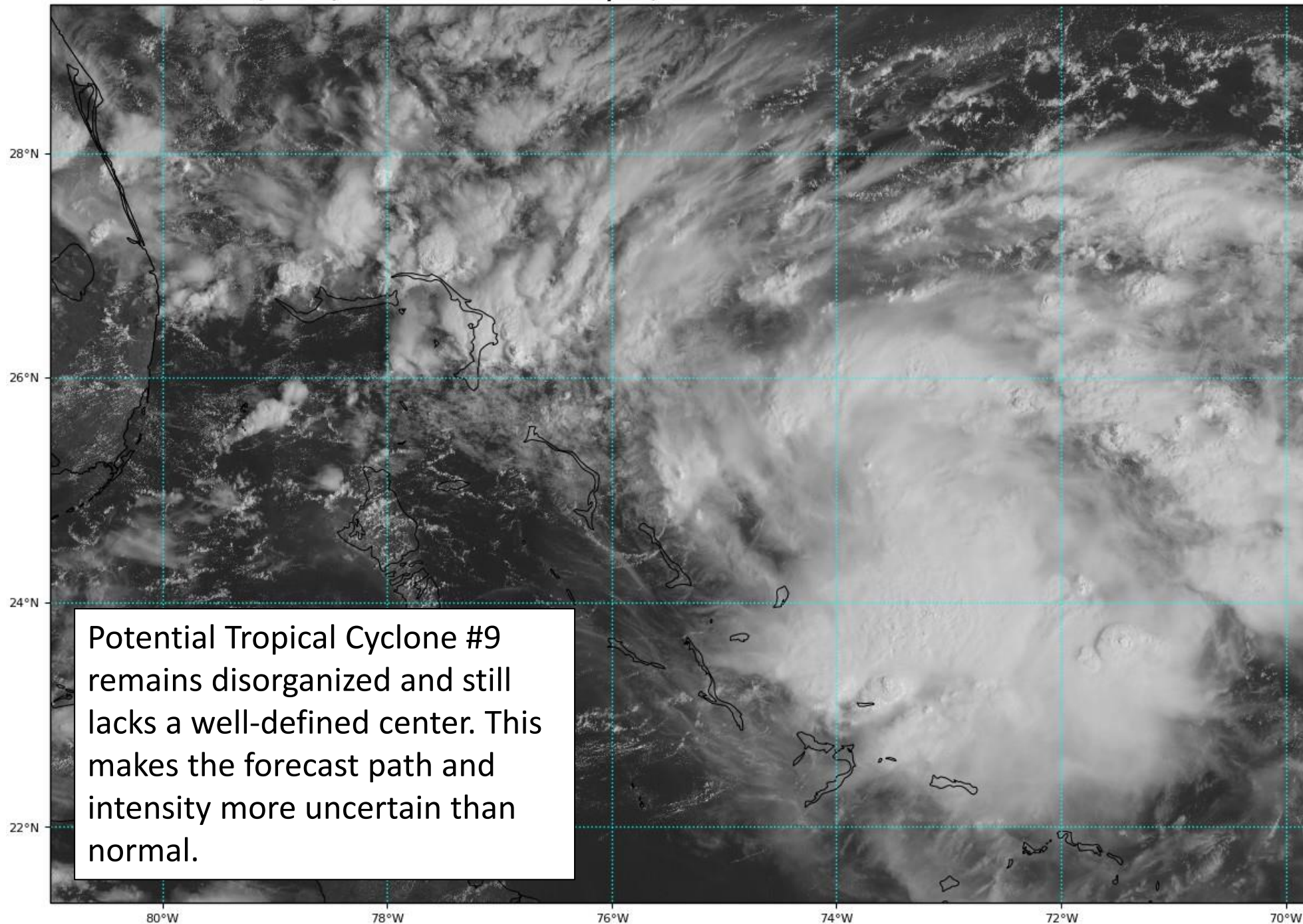
Potential Tropical Cyclone #9, Central Atlantic
Wave (50%), New Cabo Verde Wave (20%)

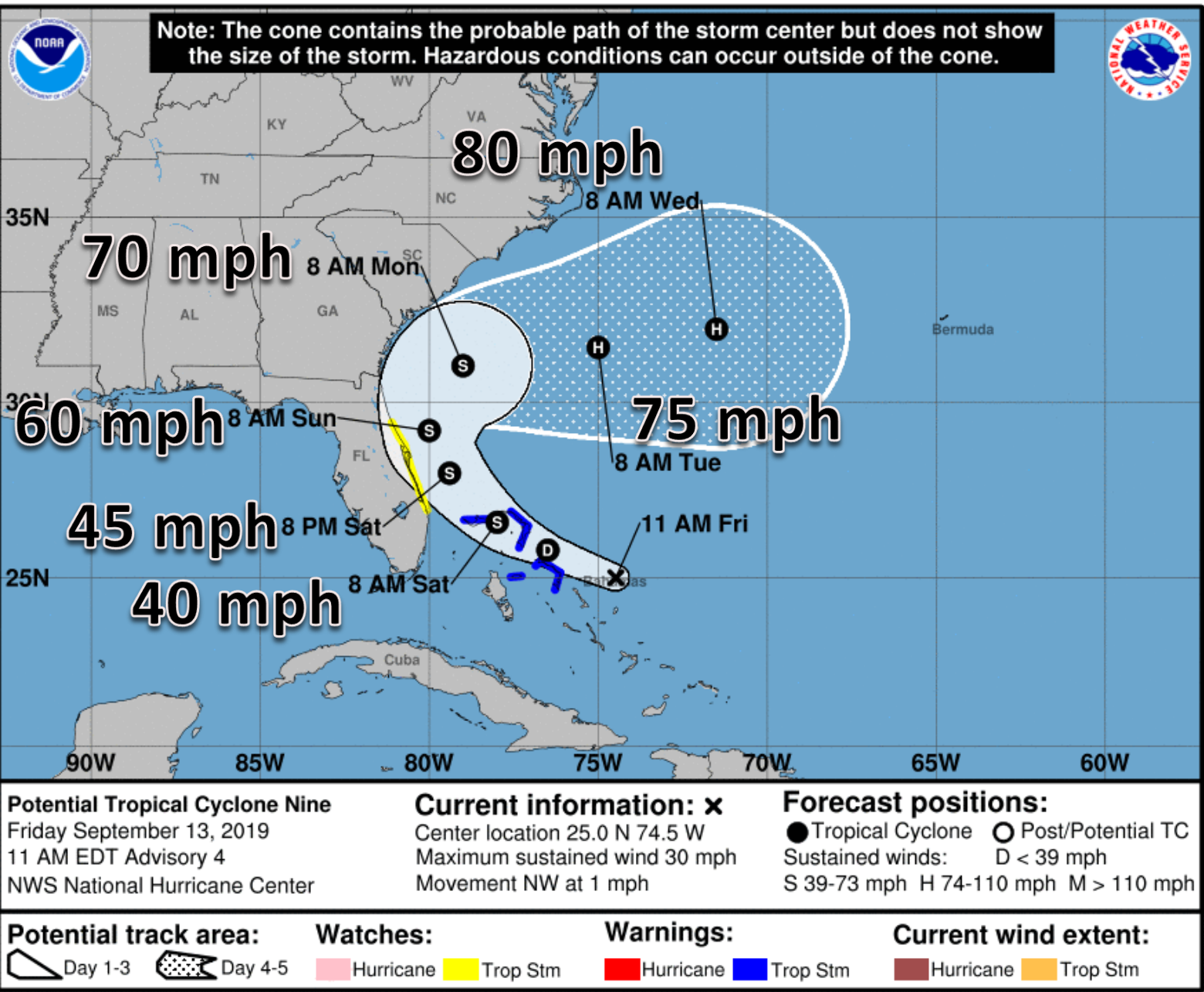
This update is intended for government and emergency response officials, and is provided for informational and situational awareness purposes only. Forecast conditions are subject to change based on a variety of environmental factors. For additional information, or for any life safety concerns with an active weather event please contact your County Emergency Management or Public Safety Office, local National Weather Service forecast office, or visit the National Hurricane Center website at www.hurricanes.gov.

Atlantic Basin Satellite Image

Chance of development: — None — Low — Medium — High





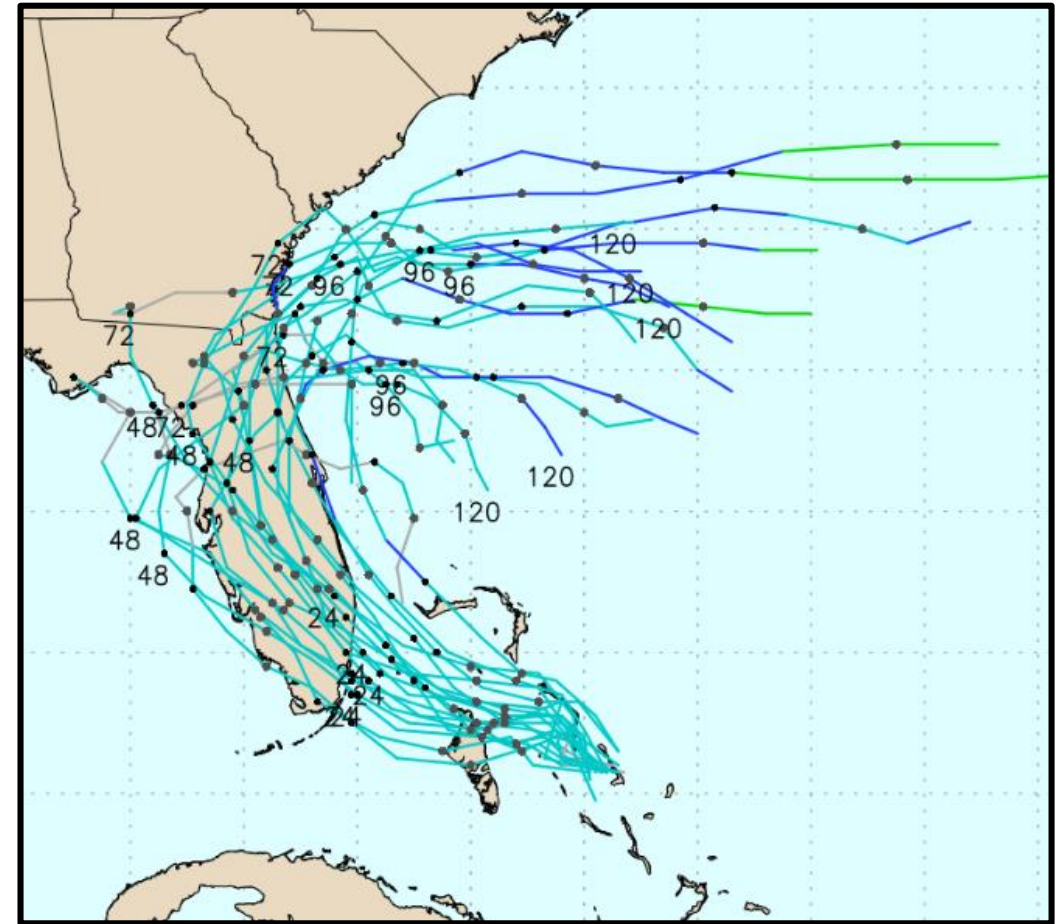
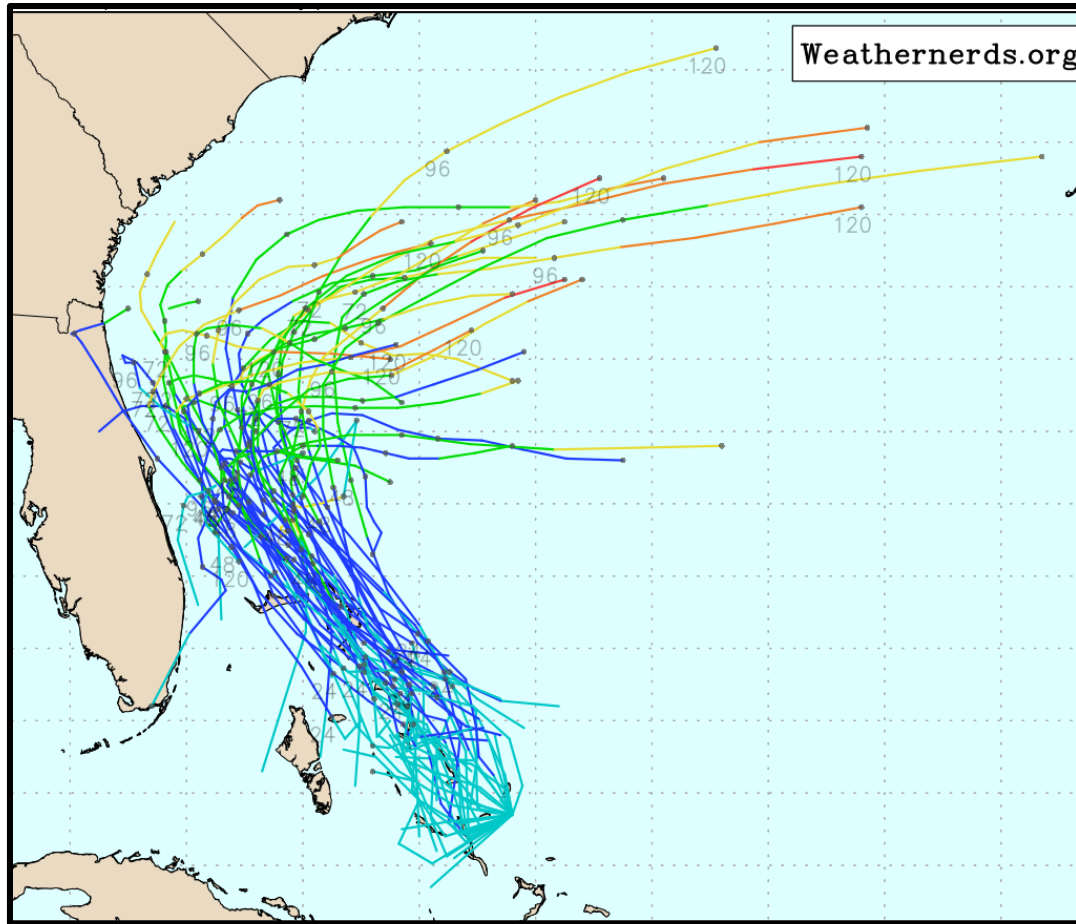


Potential Tropical Cyclone #9: PTC #9 was located about 280 miles east-southeast of Freeport in the Bahamas and moving northwest at 1 mph. An increase in forward speed is expected later today. Maximum sustained winds are near 30 mph. This system is forecast to become a tropical depression over the next day or so. Further strengthening into a tropical storm is expected late tonight or Saturday. The next name on the list is Humberto.

*** Chance for formation into a Tropical Depression or Tropical Storm through 48 hours...high...80 percent.**

*** Chance for formation into a Tropical Depression or Tropical Storm through 5 days...high...90 percent.**

PTC #9 Model Track Guidance

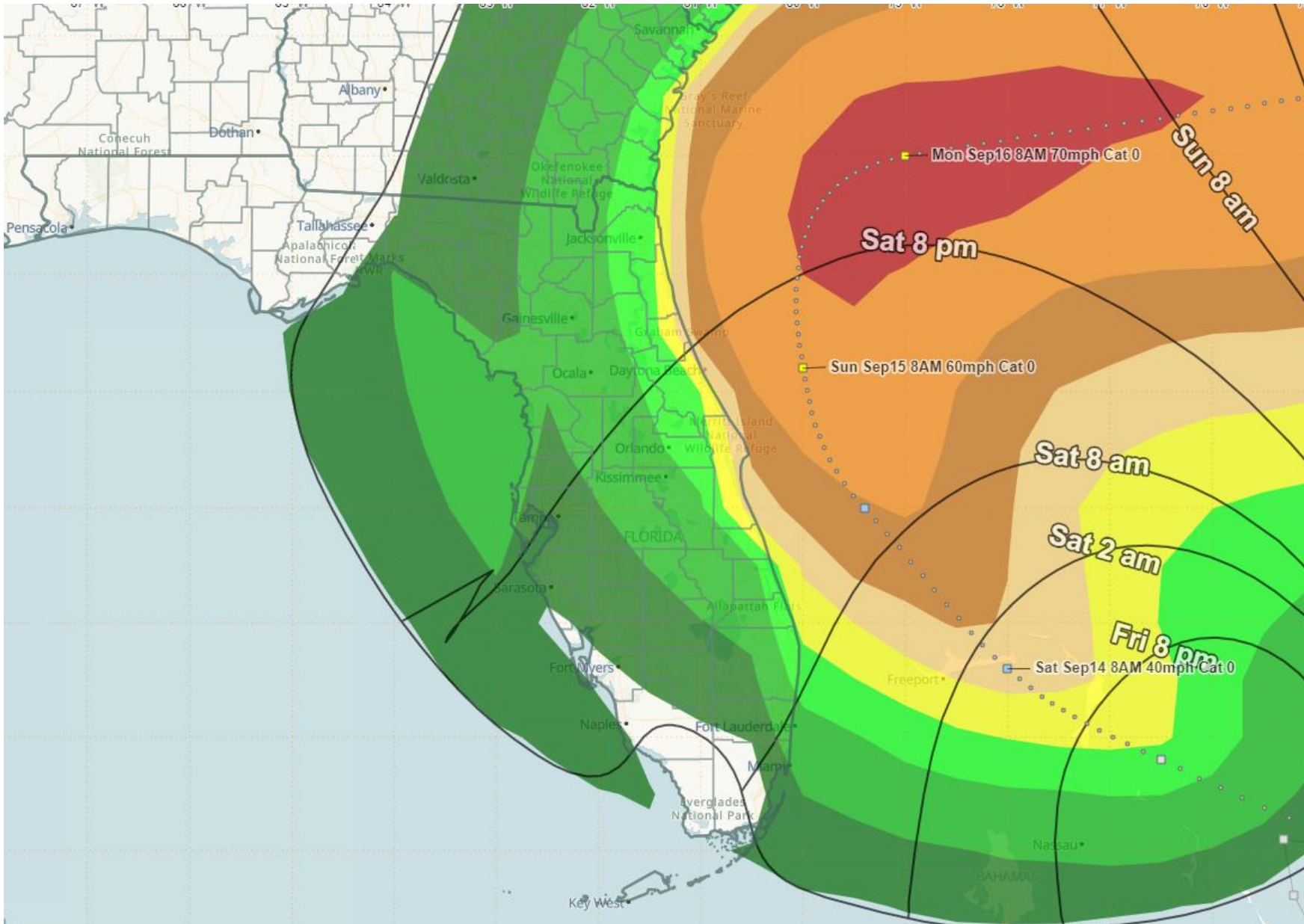


The models have started to come into better agreement on the eventual track of PTC #9. However, there is still some uncertainty, but the trend has been more toward the Florida East Coast or offshore of the East Coast. There is still a possibility of more model shifts since we still do not have a well-defined center of circulation.

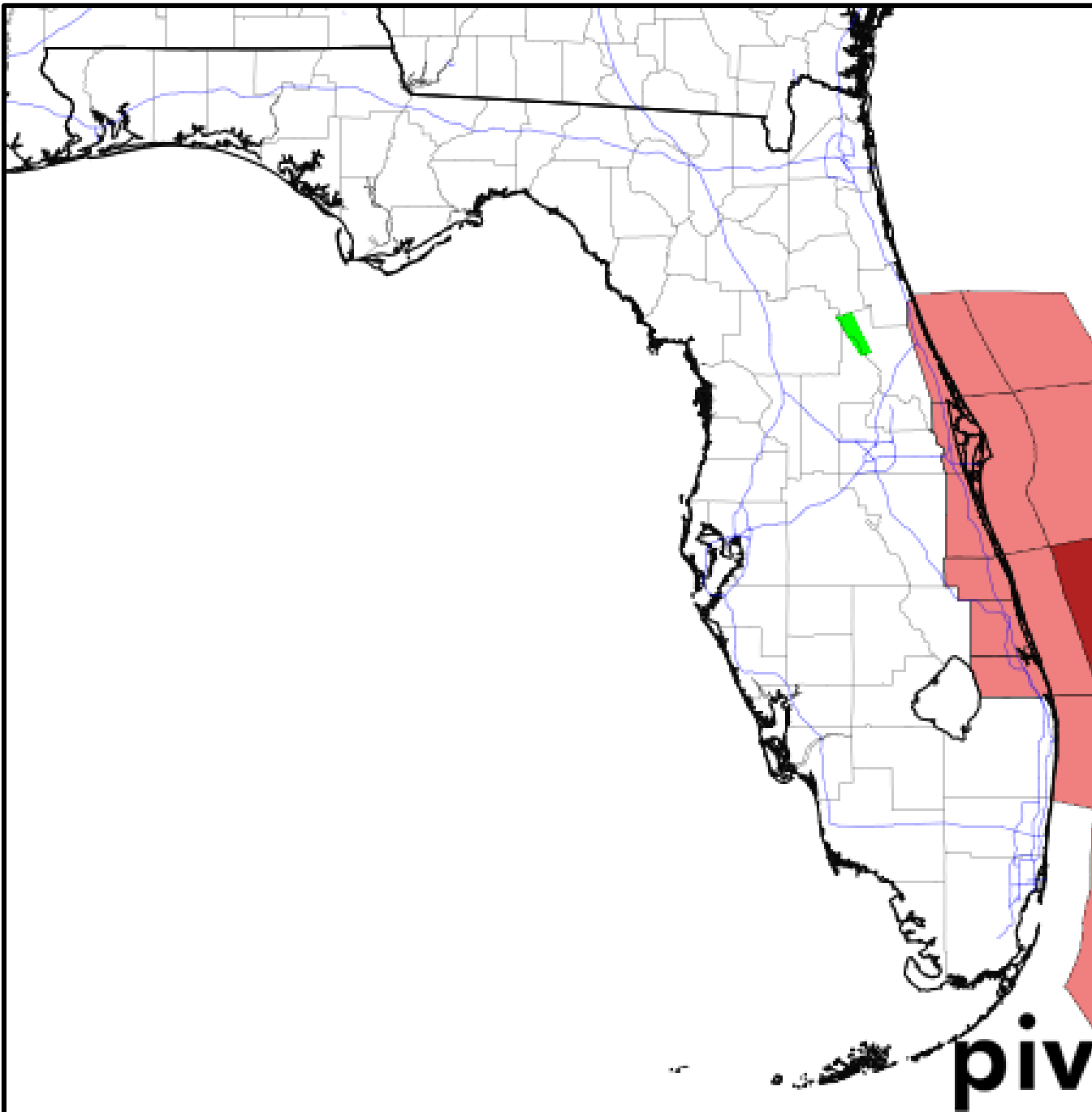
Earliest Reasonable Timing for Tropical Storm Force Winds (39+ mph)

Tropical Storm Force winds may start as early as Friday night along parts of the Florida East Coast and as early as Saturday morning in Northeast Florida.

Increase/Decrease from yesterday



Miami: 5%
Ft. Lauderdale: 16%
West Palm Beach: 27%
Fort Pierce: 38%
Cocoa Beach: 45%
Orlando: 20%
Tampa: 8%
Naples: 3%
Jacksonville: 23%
Tallahassee: 4%

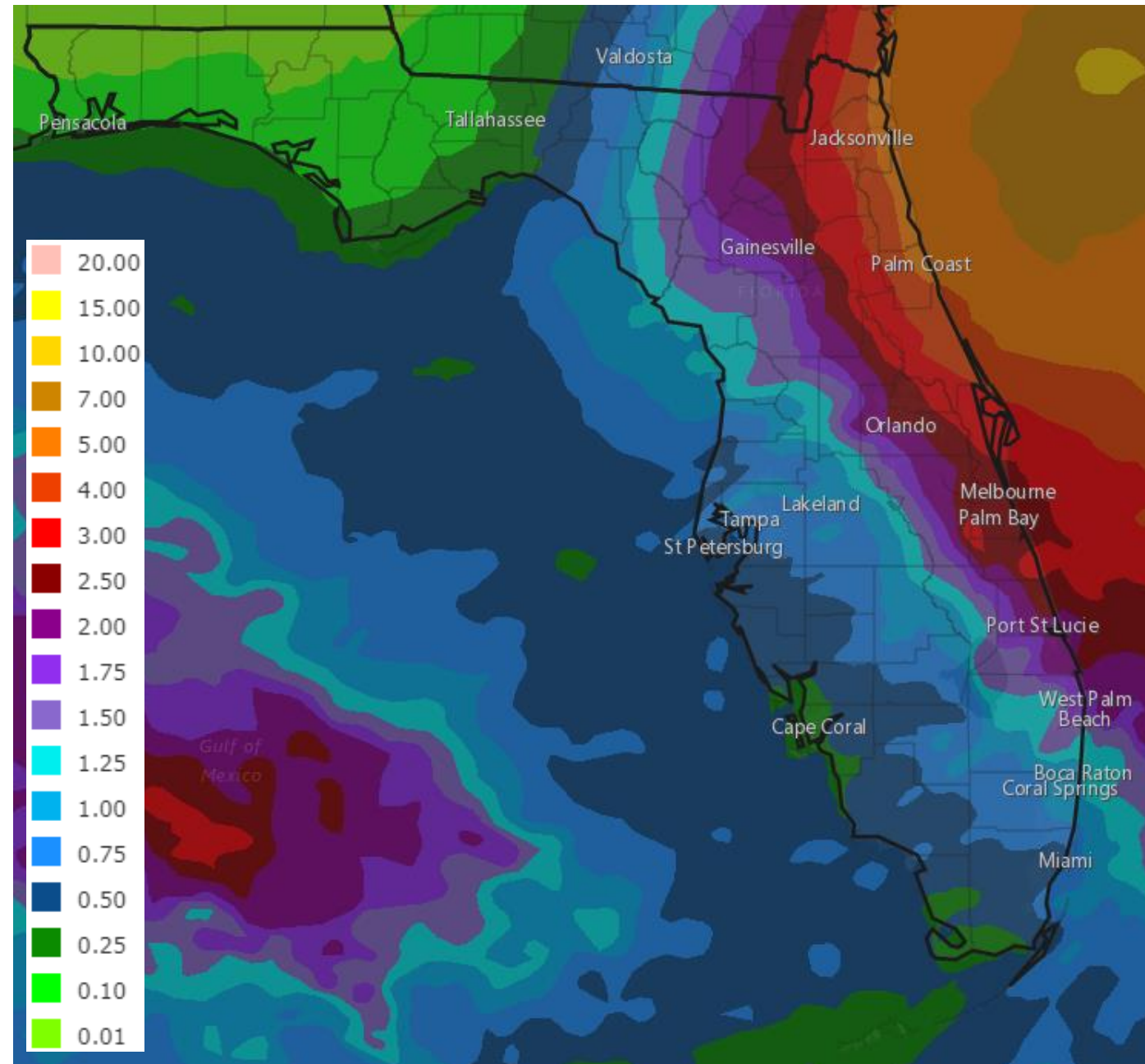


Tropical Storm Watches: coastal Volusia, Brevard, Indian River, St. Lucie, and Martin Counties

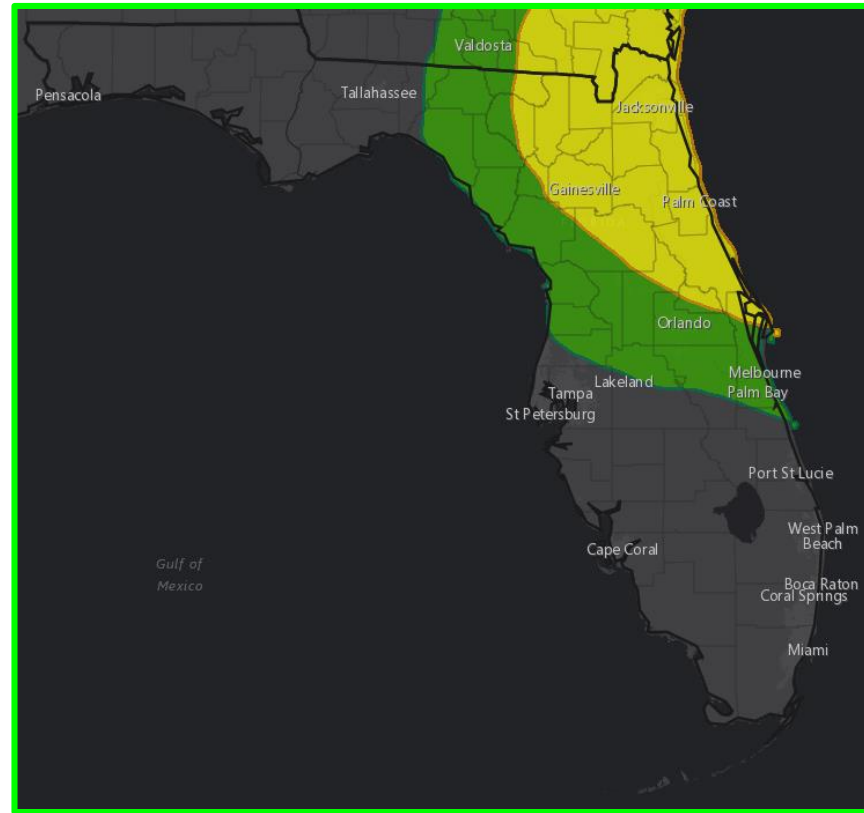
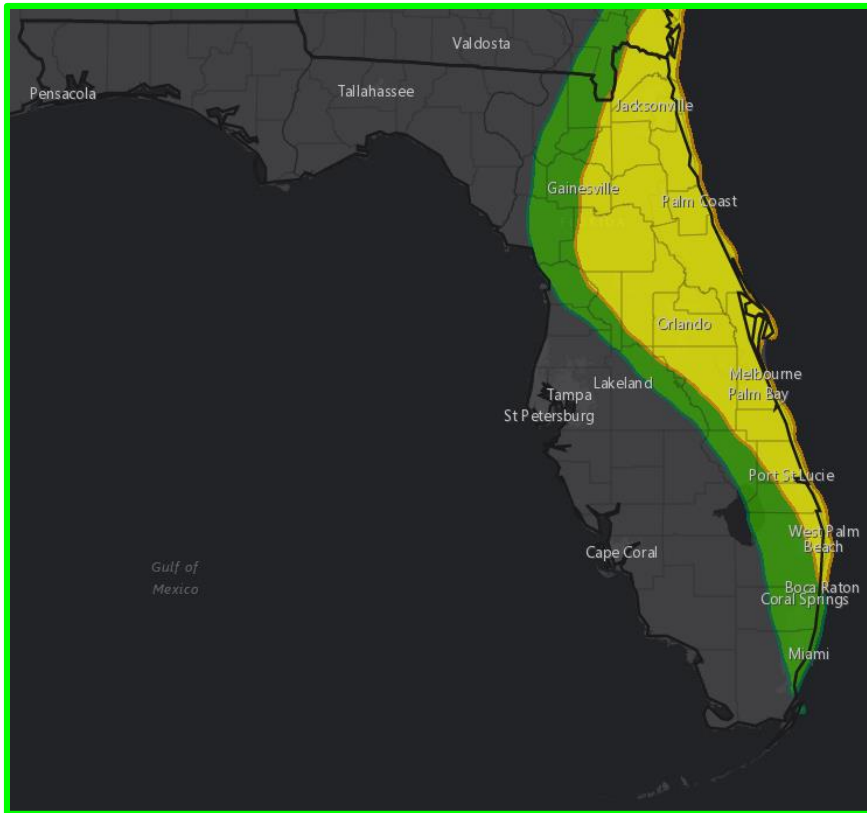
River Flood Warning: St. Johns River near Astor

Rainfall Forecast Next 5 Days

The heaviest rainfall will be confined to the East Coast. 3-6" of rain is currently forecast from Indian River County northward to the FL/GA line. Locally higher totals of 6-8" are possible. This could result in some minor flooding along parts of the St. Johns, namely at Astor where water levels remain elevated from Dorian. Flash flooding is also possible, especially where heavier bands set up.



Flash Flood Outlooks This Weekend



MARGINAL (MRGL)

**Isolated flash
floods possible**

Localized and
primarily affecting
places that can
experience rapid
runoff with heavy
rainfall.

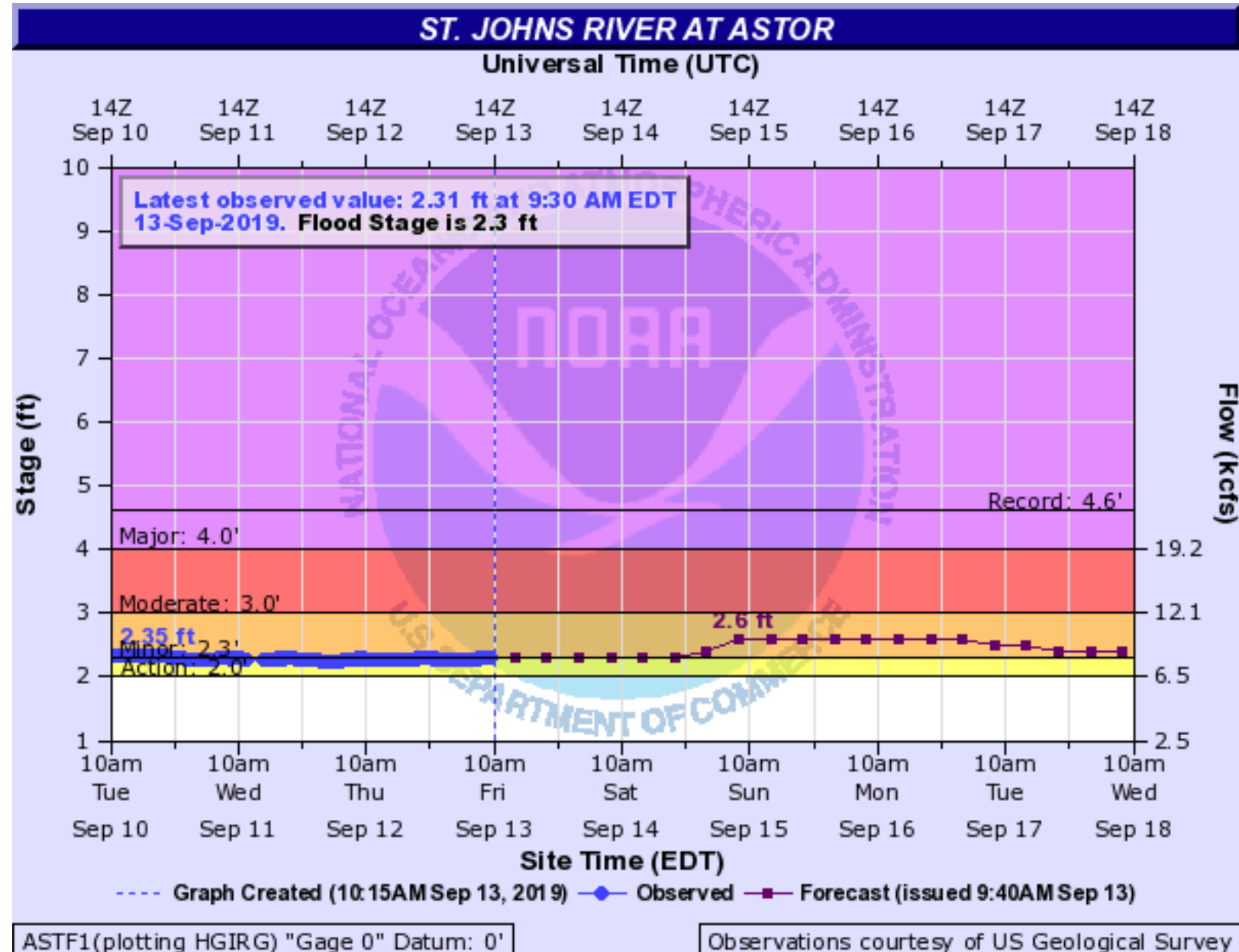
SLIGHT (SLGT)

**Scattered flash
floods possible**

Mainly localized. Most
vulnerable are urban
areas, roads, small
streams and washes.
Isolated significant
flash floods possible.

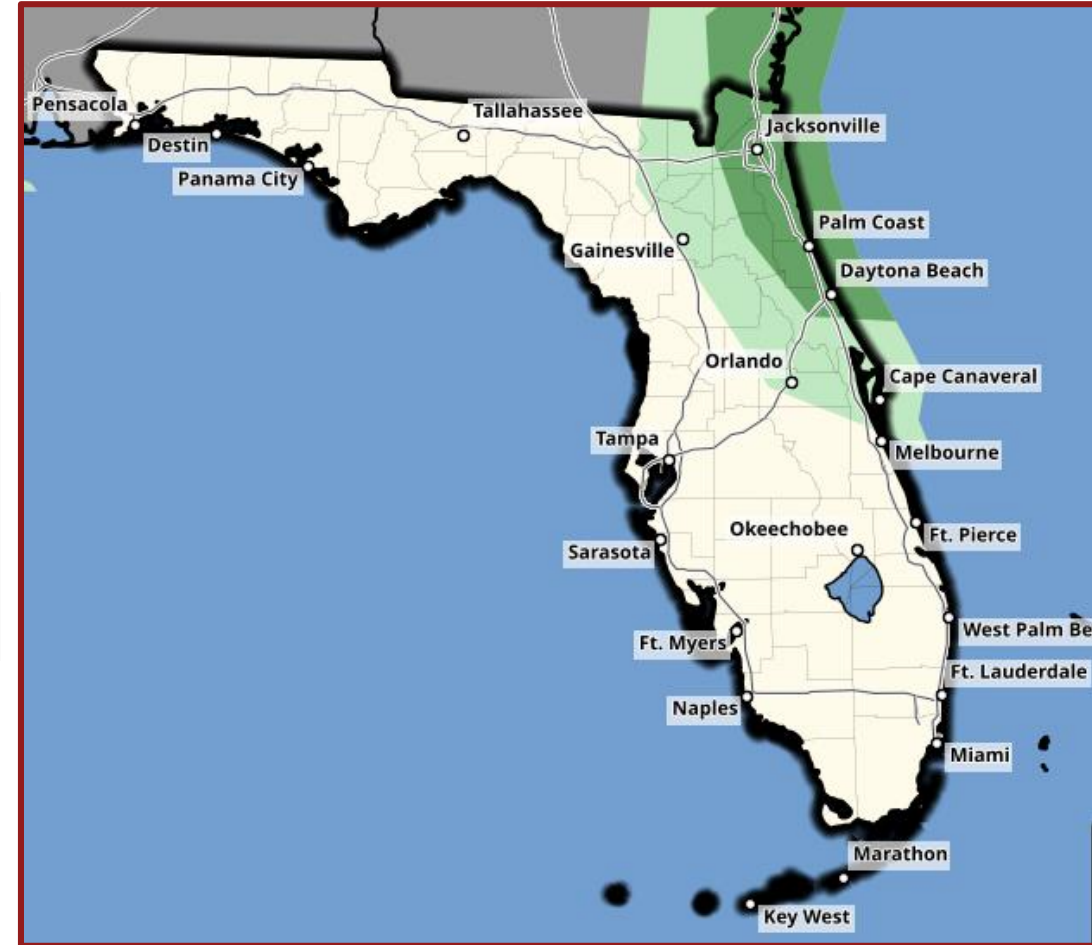
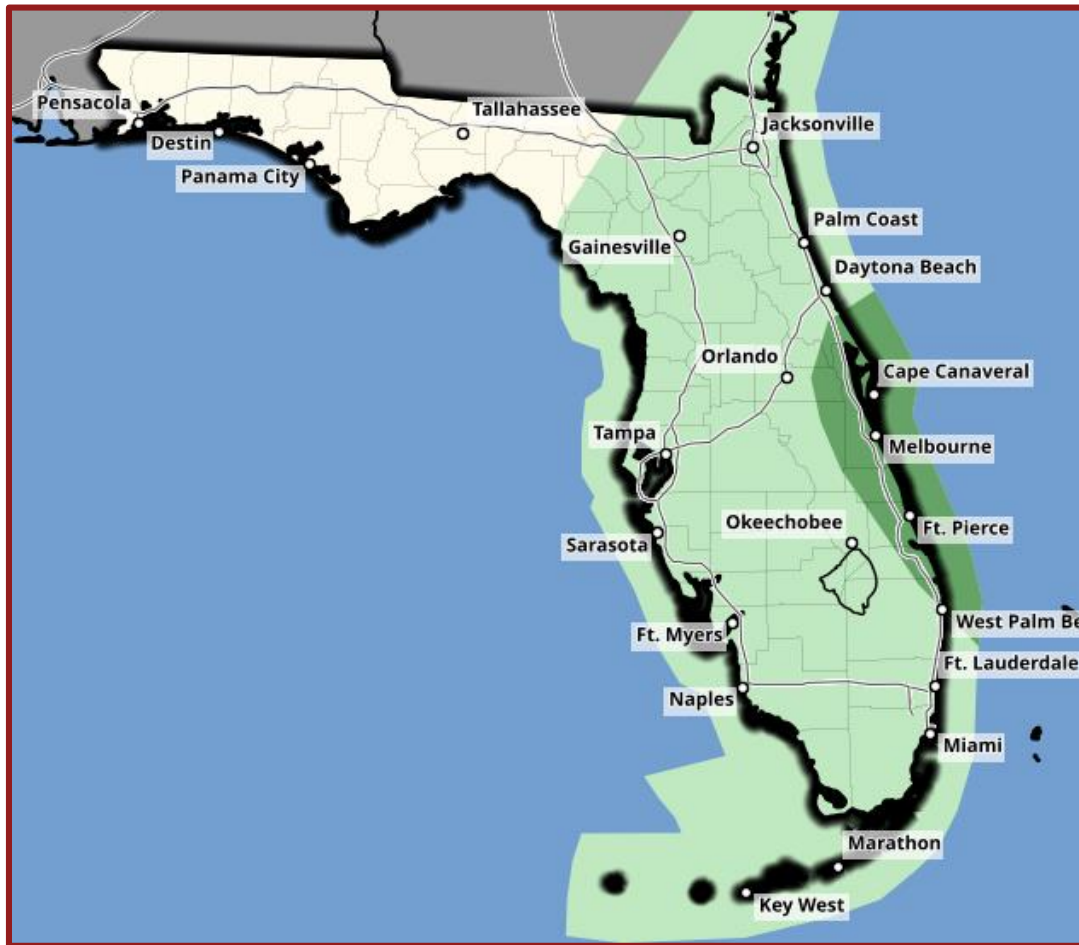
The Weather Prediction Center has outlined the entire East Coast in a Marginal Risk of flash flooding (level 1 of 4) to a Slight Risk of flash flooding (level 2 of 4) for Saturday. This also extends inland to north of the Turnpike and east of I-75. On Sunday, the risk shifts northward into Central and Northeast Florida. It will take about 2-4" in one hour or 4-6" over 6 hours to cause flash flooding.

St. Johns River at Astor



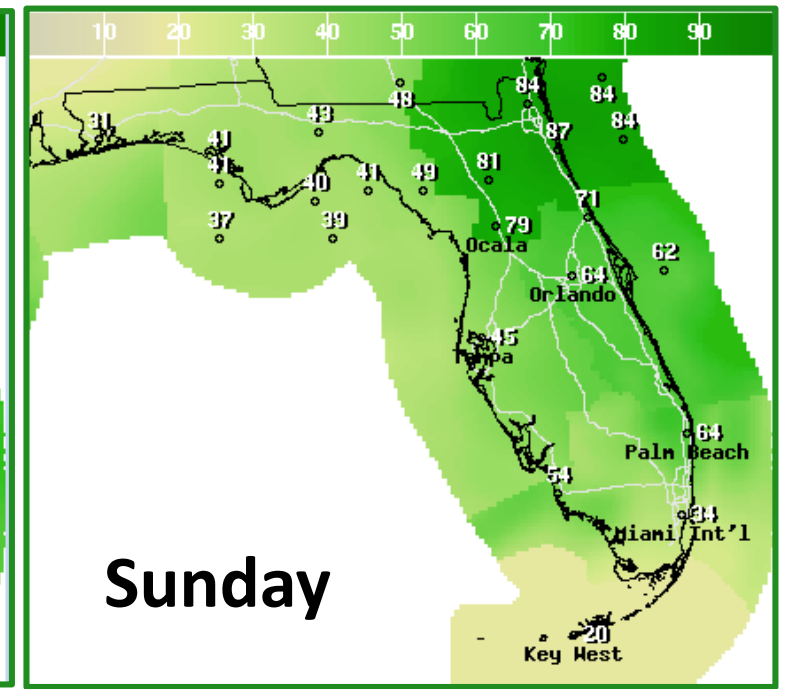
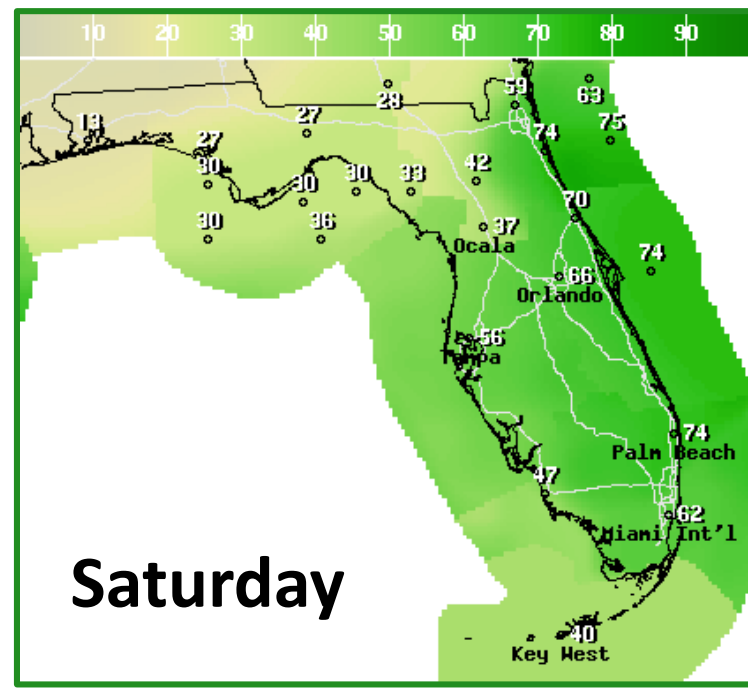
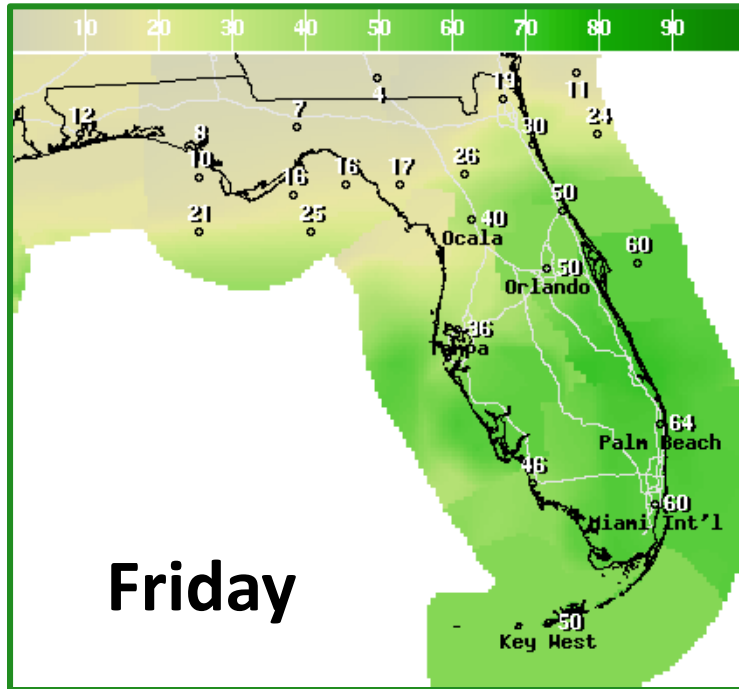
The St. Johns River at Astor remains in minor flood stage from Hurricane Dorian. While it will remain steady today, locally heavy rainfall could cause the river to rise over the weekend. Minor flooding is occurring and minor flooding is forecast to continue into next week.

Severe Weather Outlooks This Weekend



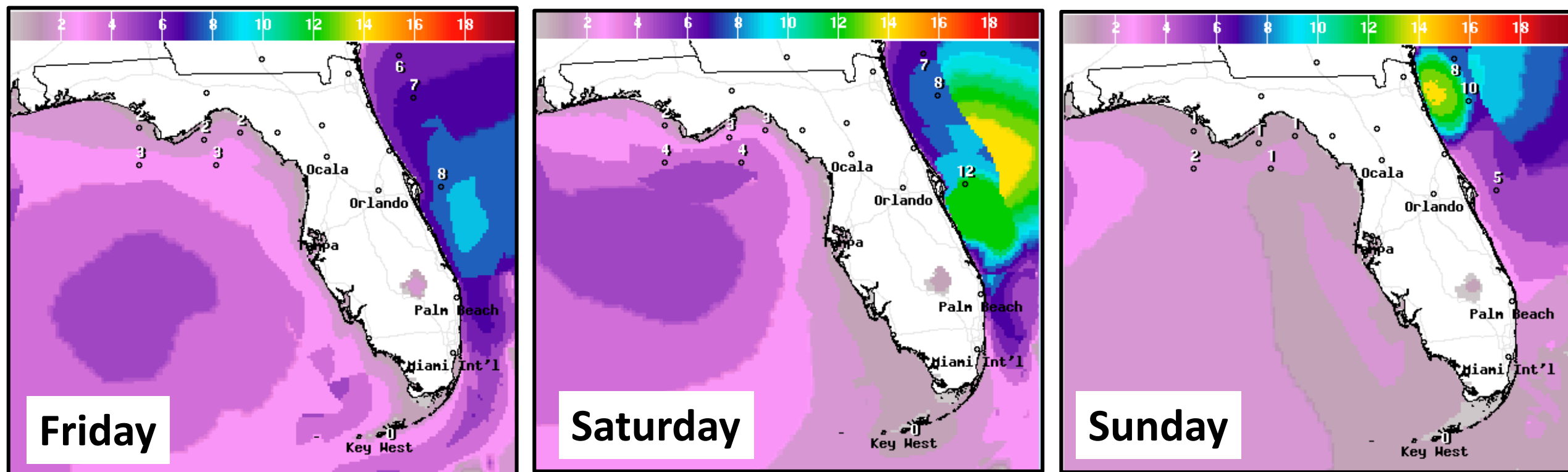
The Storm Prediction Center has outlined the Space and Treasure Coasts in a Marginal Risk of severe weather (level 1 of 5) on Saturday and the First and Space Coasts in a Marginal Risk on Sunday. Isolated tornadoes will be possible in some of the outer bands of PTC #9.

Forecast Rain Chances Through the Weekend

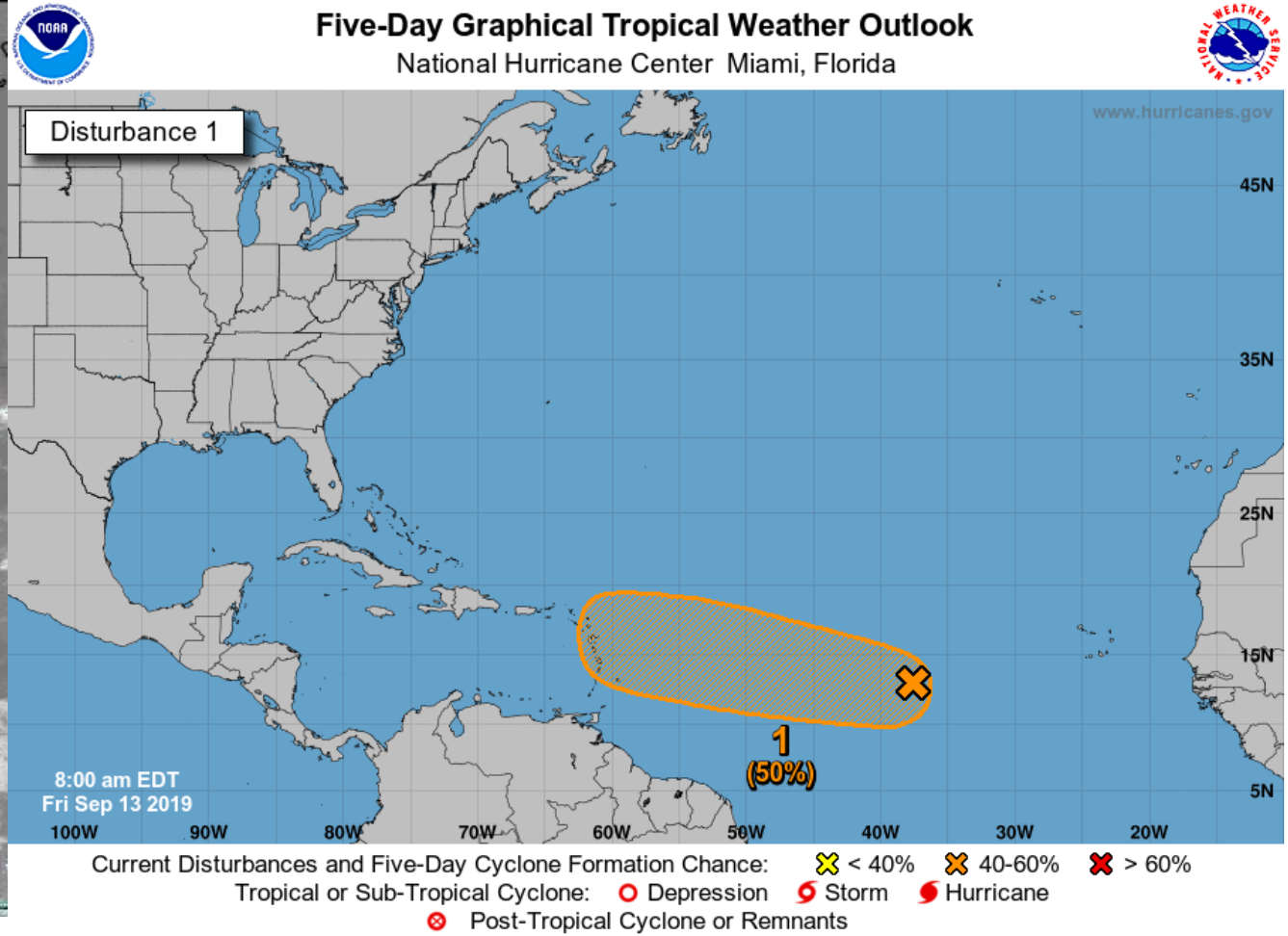
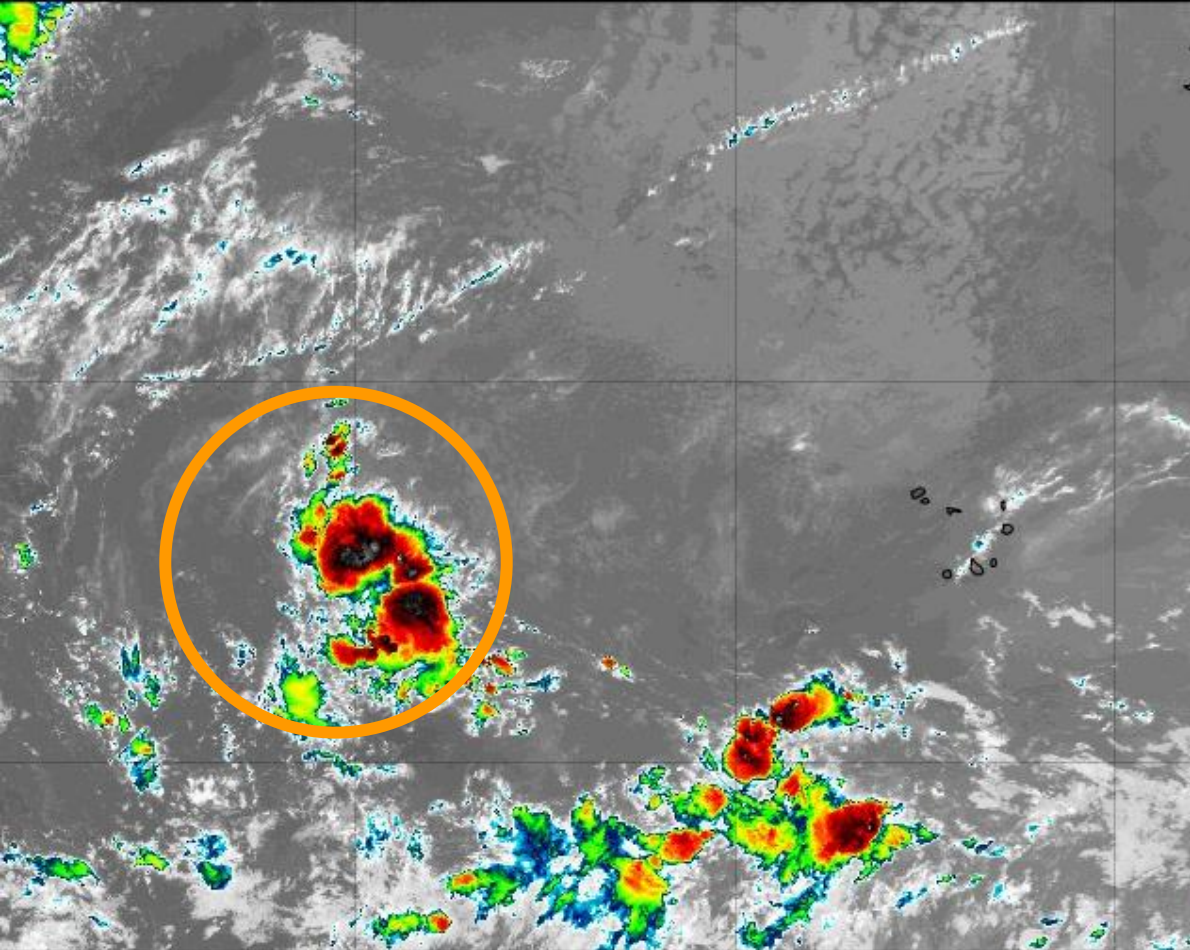


Rain chances will increase through late this week over the Peninsula, then across the entire state this weekend. Heavy squalls from PTC #9 will bring locally heavy downpours and gusty winds over tropical storm force.

Forecast Wave Heights

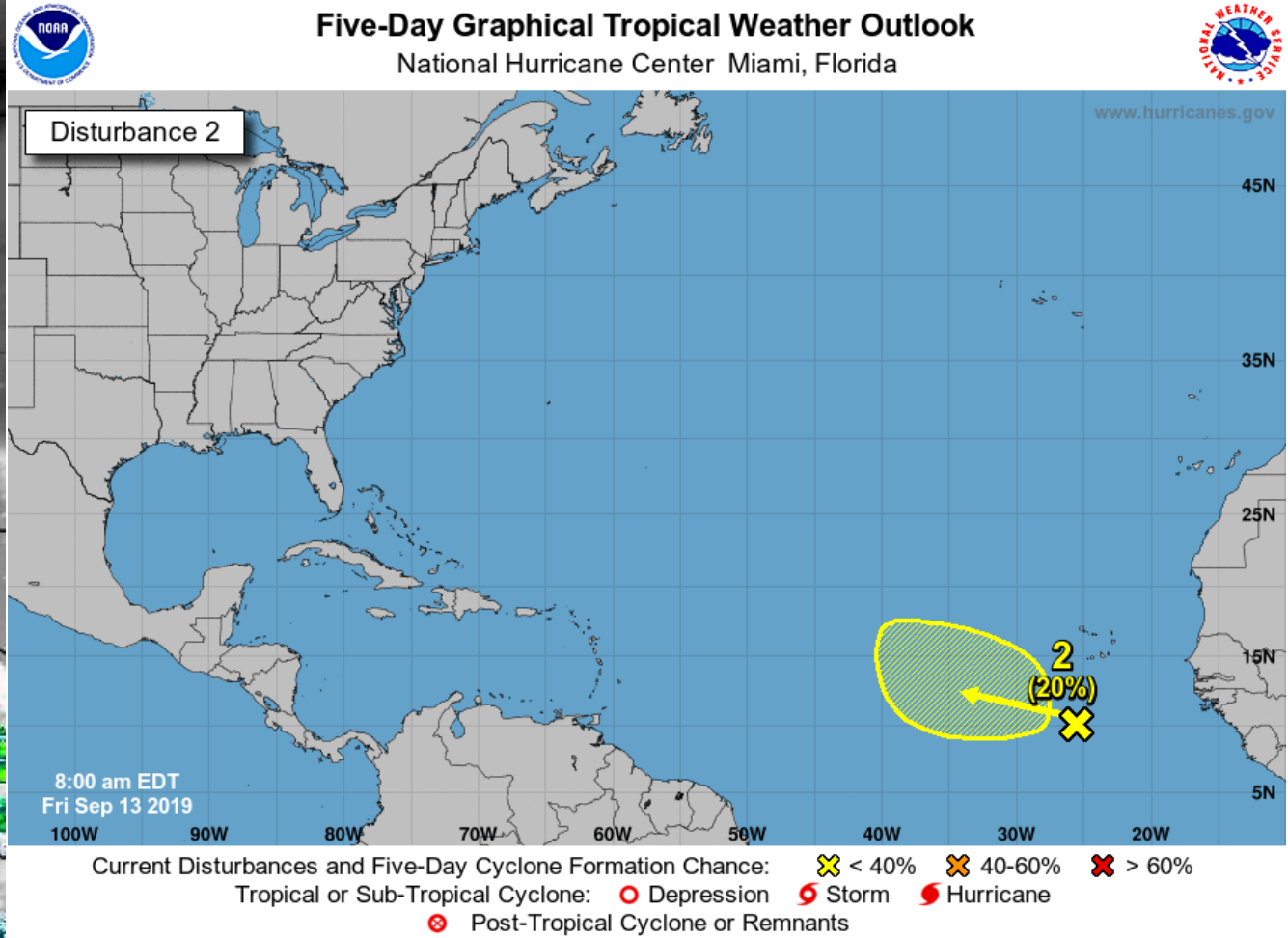
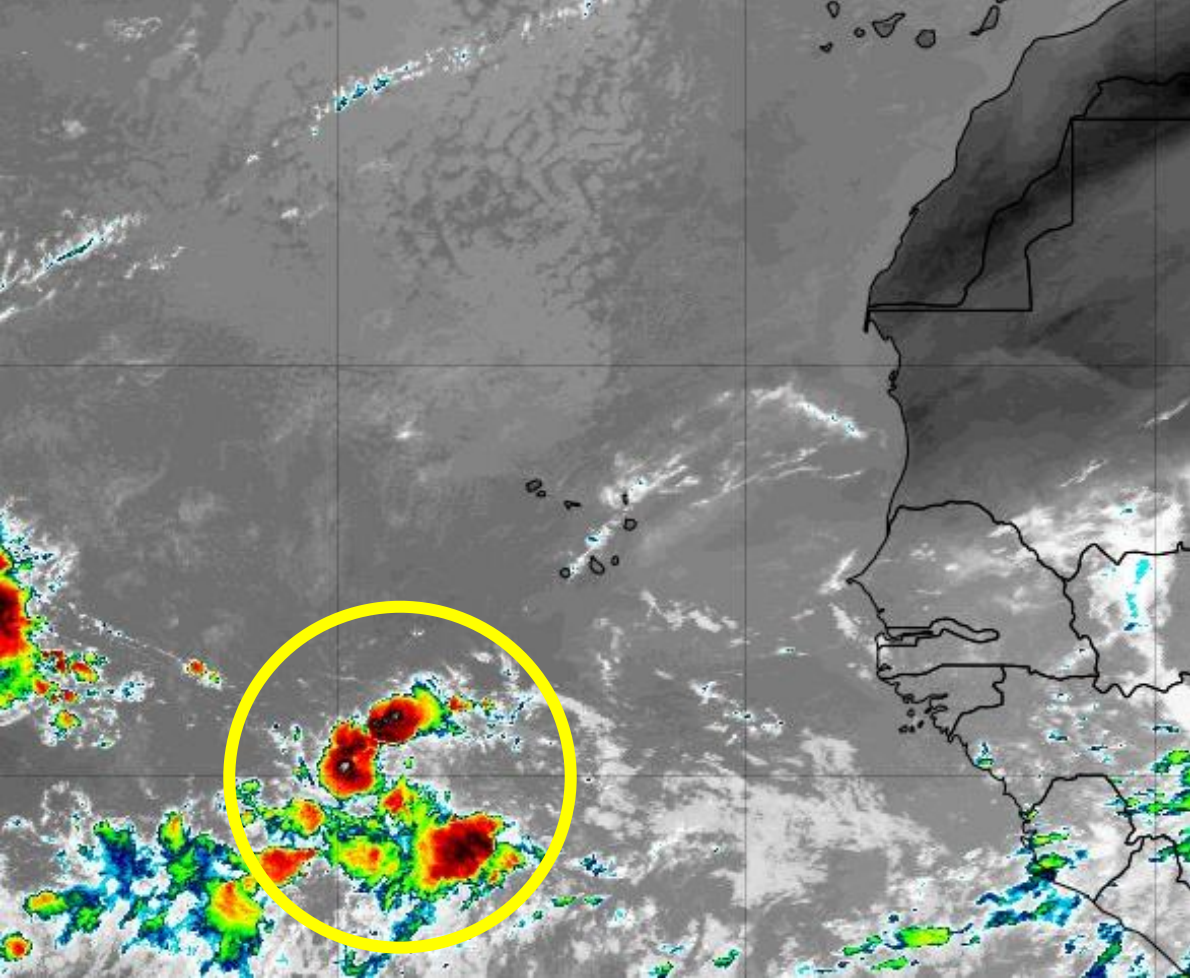


As PTC #9 approaches the East Coast, building waves and a **high risk for dangerous rip currents** are expected this weekend along East Coast beaches. High surf may cause additional minor beach erosion along the East Coast.



Central Atlantic Wave: A tropical wave located midway between the Cabo Verde Islands and the Lesser Antilles is producing a large but disorganized area of cloudiness and showers. Conditions are expected to become more conducive for development in a couple days, and a tropical depression could form early next week while the system moves westward across the tropical Atlantic.

- * Formation chance through 48 hours...low...10 percent.
- * Formation chance through 5 days...medium...50 percent.



New Cabo Verde Wave: Another tropical wave is located a few hundred miles south-southeast of the Cabo Verde Islands. Slow development of this system is possible during the next several days while it moves westward across the tropical Atlantic.

- * Formation chance through 48 hours...low...near 0 percent.
- * Formation chance through 5 days...medium...20 percent.

Summary

Potential Tropical Cyclone #9

- PTC #9 is located about 280 miles east-southeast of Freeport, Grand Bahama Island, moving northwest at 1 mph. This forward speed is expected to increase later today and continue a northwestward movement over the next day or so.
- A turn toward the north then northeast is expected on Sunday then a turn toward the east is expected on Monday.
- Maximum sustained winds are near 30 mph. The system is expected to become a tropical depression later today and strengthen into a tropical storm Saturday morning.
- It is important to note that confidence in this forecast remains lower than usual due to the lack of a well-defined center. The track and intensity are prone to significant changes due to model shifts and possible center reformations.
- Tropical Storm Watches are in effect from the Volusia/Flagler County line to Jupiter Inlet.
- Chances remain high that this system will become a tropical depression or tropical storm (80% in the next 48 hours, 90% in the next 5 days).

Central Atlantic Wave

- A tropical wave several hundred miles west of the Cabo Verde Islands will move quickly across the tropical Atlantic and may gradually organize this weekend or early next week.
- The National Hurricane Center is indicating a near 10% (low) chance of development over the next 48 hours, but a 50% (medium) chance from days 3-5. This is an increase since yesterday.

New Cabo Verde Wave

- Another tropical wave a few hundred miles south-southeast of the Cabo Verde Islands will also move westward across the tropical Atlantic and may gradually organize this weekend or early next week.
- The National Hurricane Center is indicating a near 0% (low) chance of development over the next 48 hours, but a 20% (low) chance from days 3-5.

Florida Outlook:

- Tropical Storm Watches are in effect for the Florida East Coast from the Flagler/Volusia County line southward to Jupiter Inlet. The best chance of sustained tropical storm force winds will be along the immediate East Coast.
 - PTC #9 will bring increased rain chances and potentially locally heavy rainfall to the East Coast this weekend with 3-6" possible. This may cause some localized flooding.
 - There is a Marginal to Slight Risk of flash flooding this weekend across the Peninsula, mainly near the East Coast.
 - Minor river flooding will be possible along parts of the St. Johns, especially where water levels are still elevated from Hurricane Dorian.
 - Isolated tornadoes will be possible in some of PTC #9's outer bands both Saturday and Sunday.
 - Heavy surf and dangerous rip currents are expected along East Coast beaches. This may also cause minor coastal flooding (generally less than 2') and some additional beach erosion.
 - The next name on the 2019 Atlantic storm name list is Humberto.
-
- It is too early to determine any impacts from either tropical wave in the Atlantic. It would be at least 7 days before any impacts happen if they occur at all.

The next tropics packet will be issued Friday afternoon. For the latest information on the tropics, please visit the National Hurricane Center website at www.hurricanes.gov. For the latest flood updates, see the latest products from your local National Weather Service, the [Southeast River Forecast Center](#), and the [Weather Prediction Center](#).



TROPICAL UPDATE



Created by:

Cameron Young, Assistant State Meteorologist

Cameron.Young@em.myflorida.com

State Meteorological Support Unit

Florida Division of Emergency Management

Users wishing to subscribe (approval pending) to this distribution list, register at:

https://public.govdelivery.com/accounts/FLDEM/subscriber/new?topic_id=SERT_Met_Tropics.

Other reports available for subscription are available at:

<https://public.govdelivery.com/accounts/FLDEM/subscriber/new?preferences=true>