



# TROPICAL UPDATE



10 AM EDT

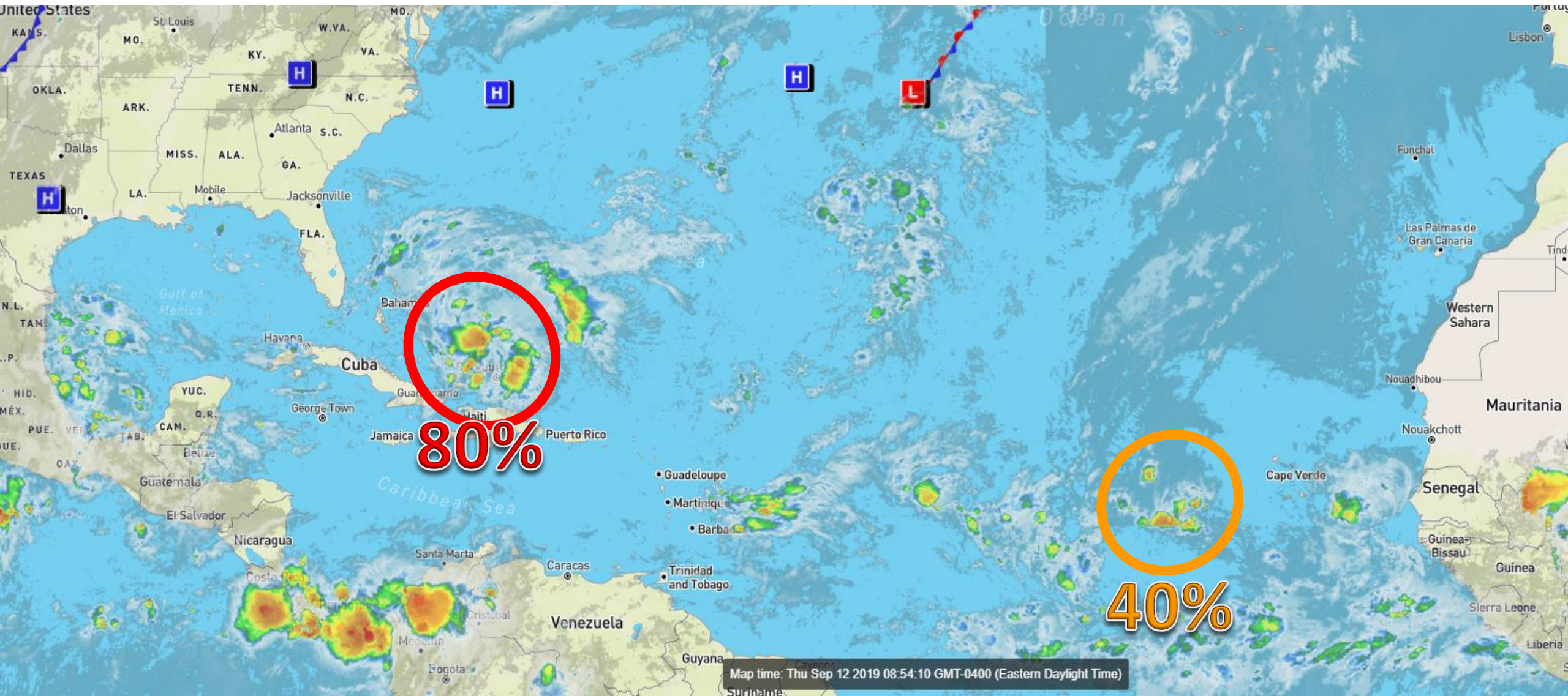
Thursday, September 12, 2019

Invest 95L (80%) & Cabo Verde Wave (40%)

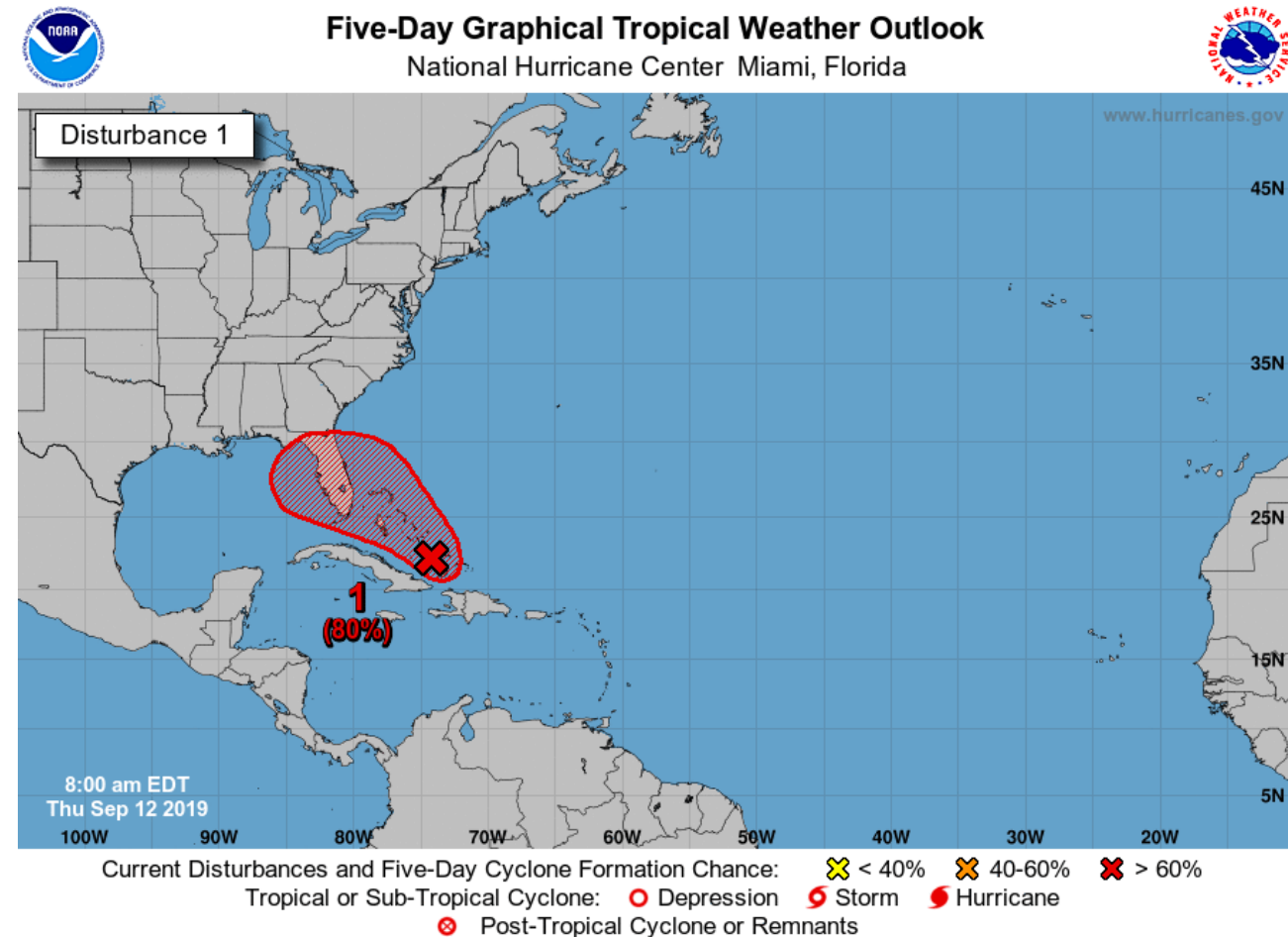
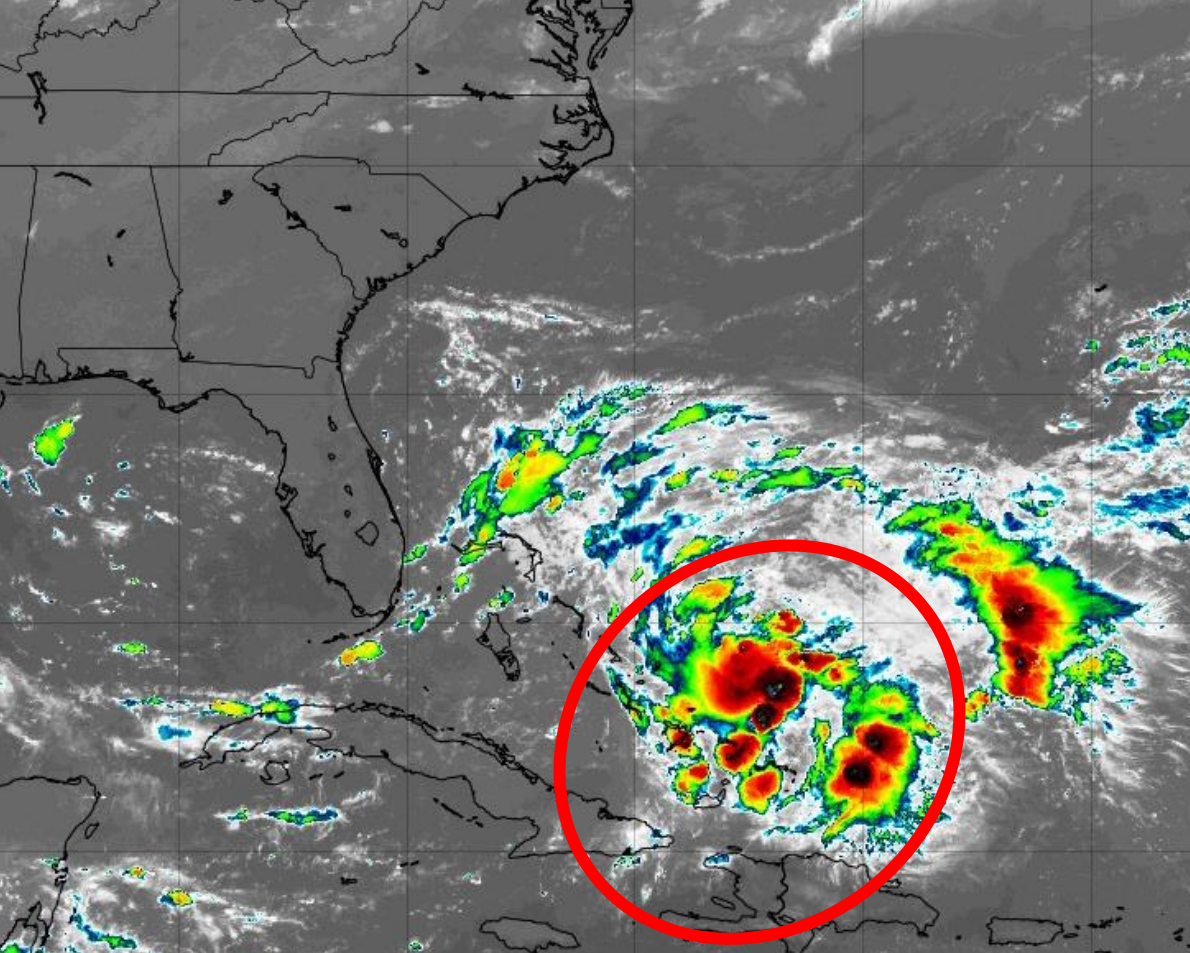
This update is intended for government and emergency response officials, and is provided for informational and situational awareness purposes only. Forecast conditions are subject to change based on a variety of environmental factors. For additional information, or for any life safety concerns with an active weather event please contact your County Emergency Management or Public Safety Office, local National Weather Service forecast office, or visit the National Hurricane Center website at [www.hurricanes.gov](http://www.hurricanes.gov).

# Atlantic Basin Satellite Image

Chance of development: — None    Low    Medium    High





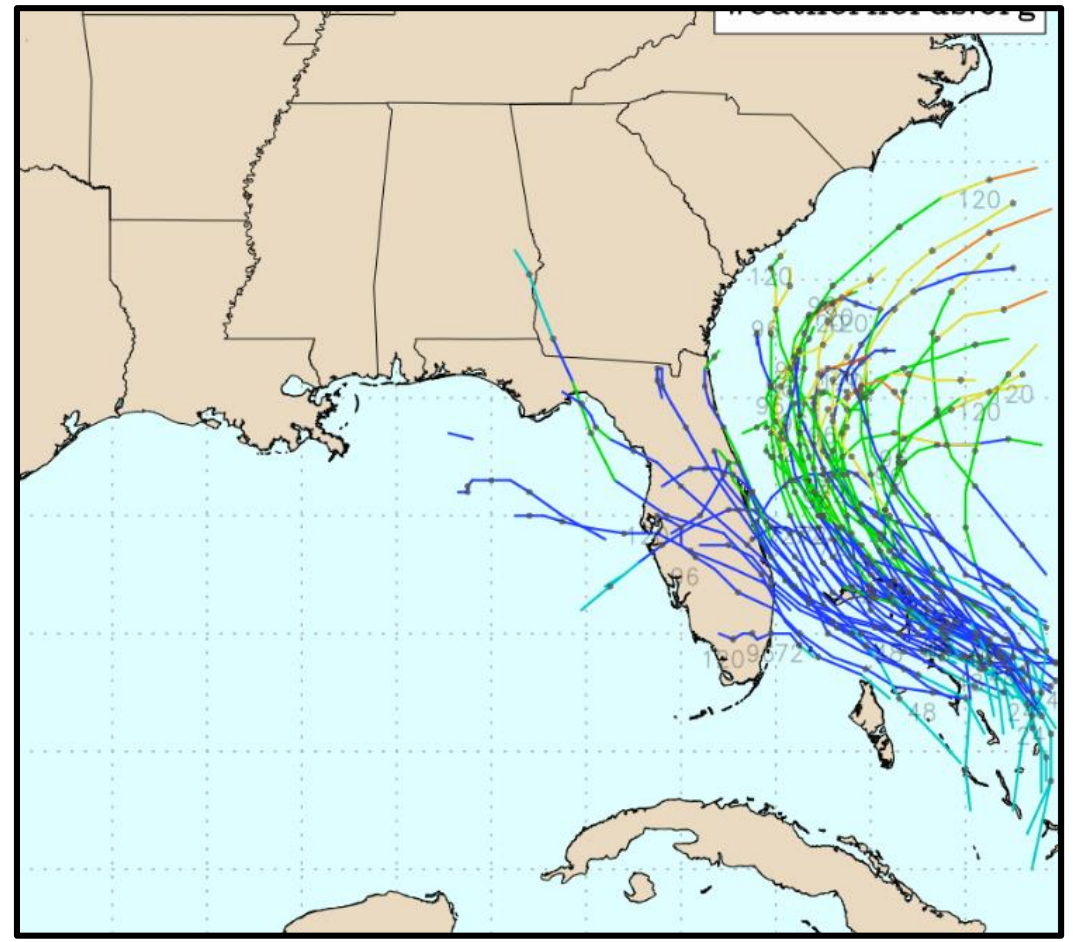


**Invest 95L:** Satellite images indicate that the area of disturbed weather over the central and southeastern Bahamas is gradually becoming better organized while surface pressures are falling in the area. Conditions are becoming favorable for a tropical depression or a tropical storm to form within the next day or so as the system moves toward the northwest through the northwestern Bahamas and toward the Florida Peninsula at 5 to 10 mph. **If this development trend continues, Potential Tropical Cyclone advisories will likely be initiated later today.** An Air Force Reserve reconnaissance aircraft is scheduled to investigate the system this afternoon, if necessary.

\* **Formation chance through 48 hours...high...70 percent.**

\* **Formation chance through 5 days...high...80 percent.**

## Invest 95L Model Track Guidance



Uncertainty in the forecast track has greatly increased since yesterday with models now greatly diverging. The details lie in where the low-level center of 95L eventually forms or consolidates. If it forms slower, weaker, and/or farther south, then it may move across South Florida into the eastern Gulf of Mexico. If it forms faster, is strong, and/or farther north, then it may move along or off the East Coast of Florida.





**Thursday**



**Friday**



**Saturday**



**Sunday**

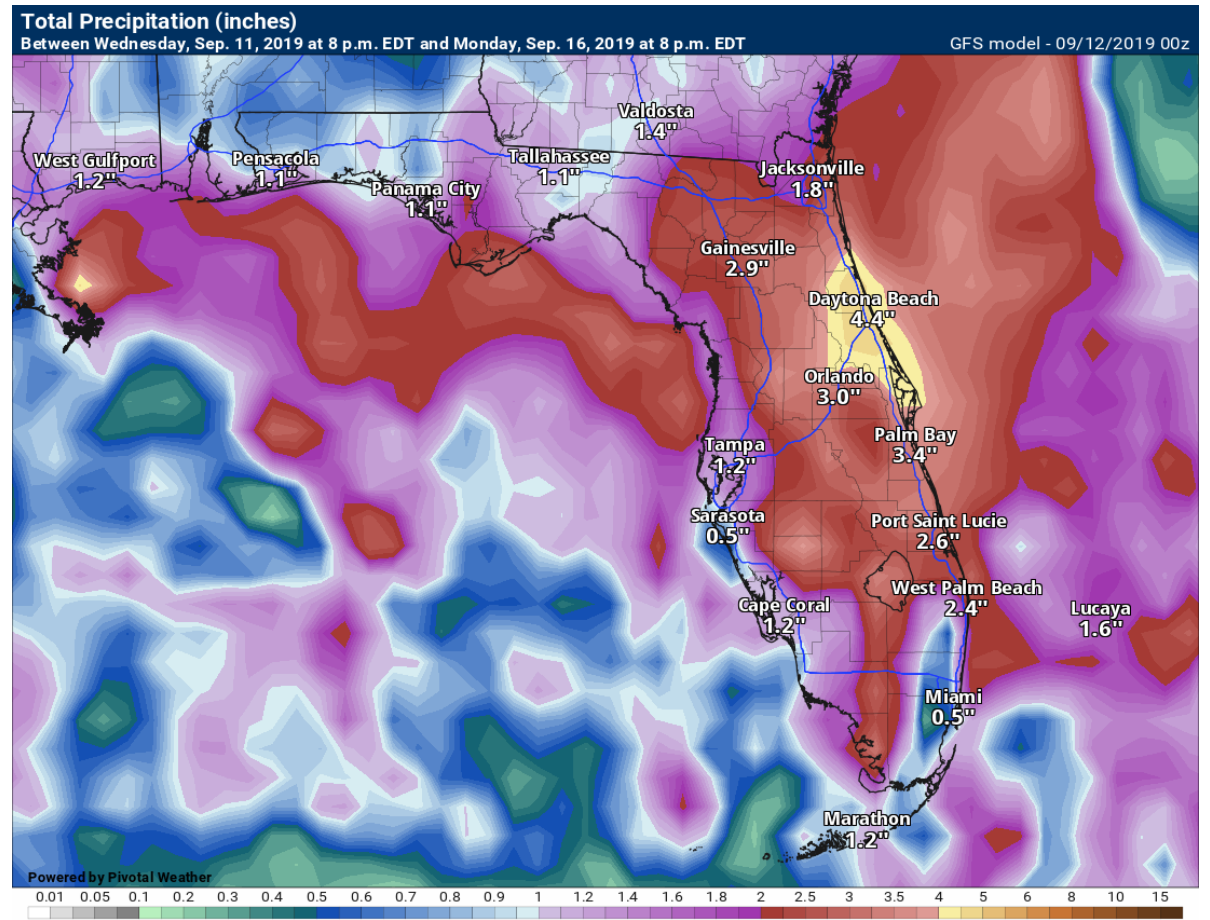
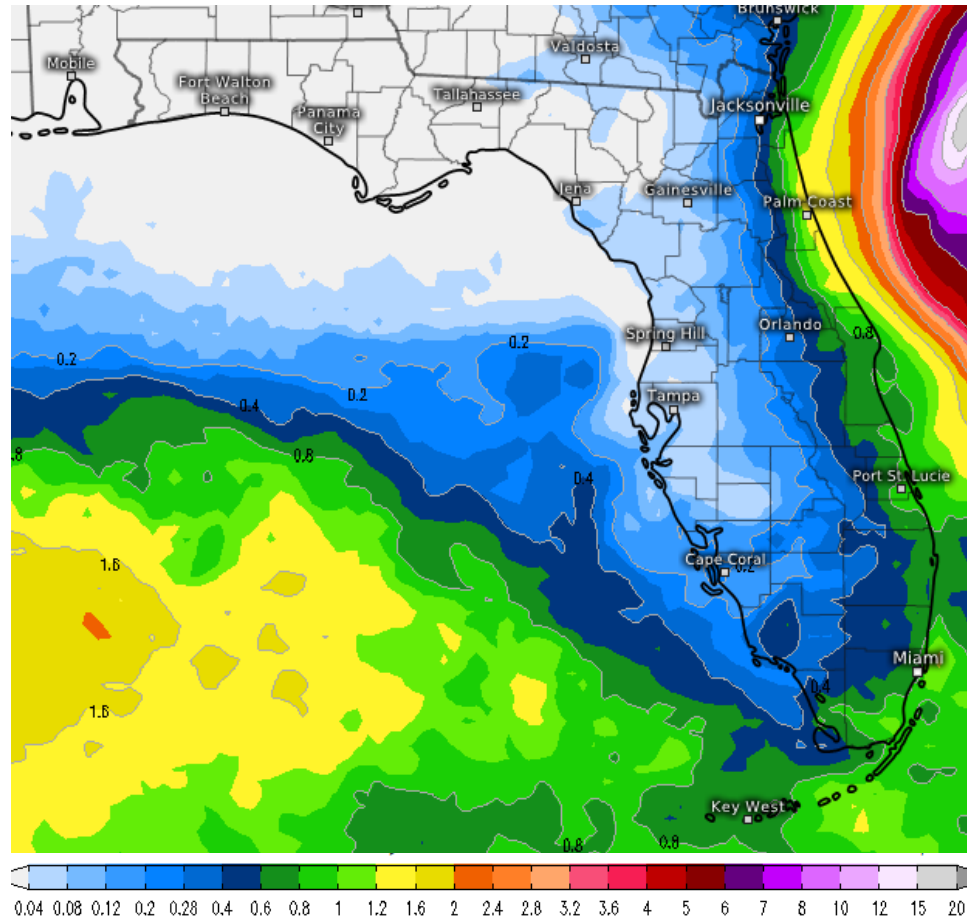
## Forecast Rain Chances Through the Weekend

Rain chances will increase through late this week over the Peninsula, then across the entire state this weekend. Numerous showers with embedded thunderstorms will be expected each day. Locally heavy rainfall will be possible in the stronger storms.

However, these rain chances may change depending on the exact track of 95L.

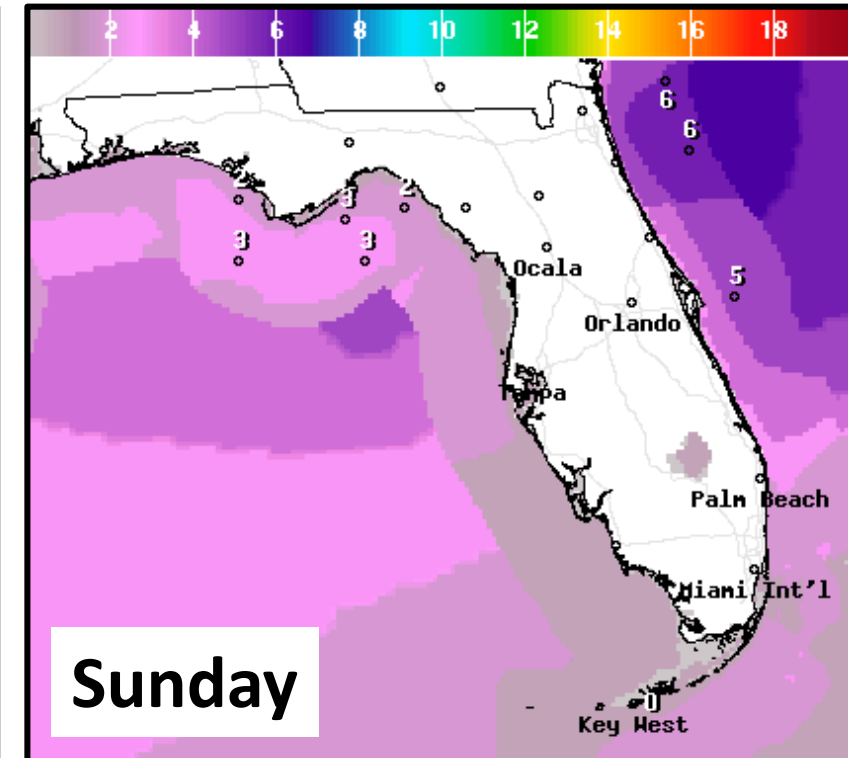
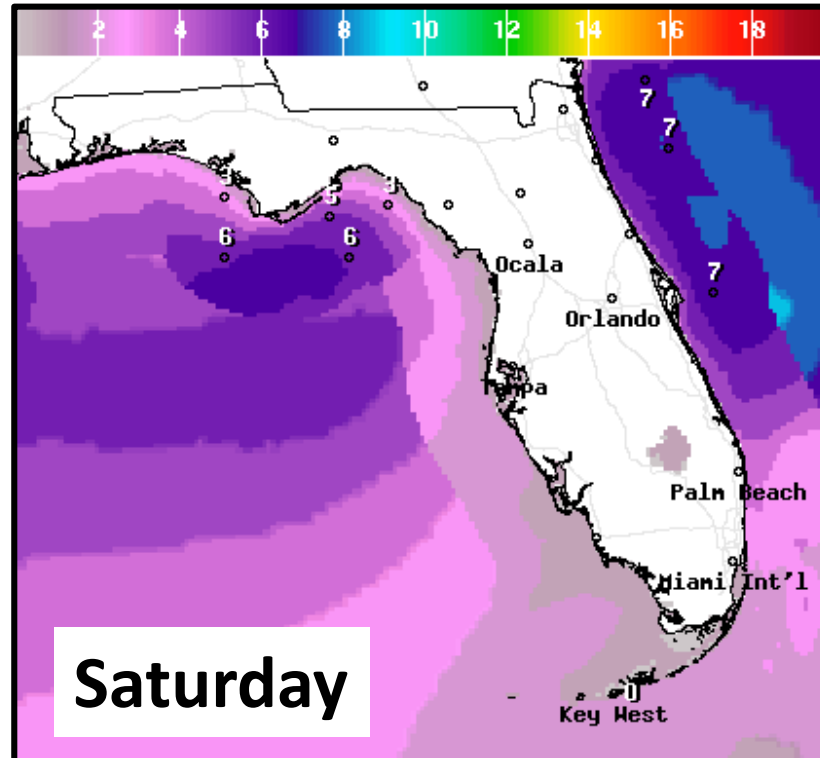
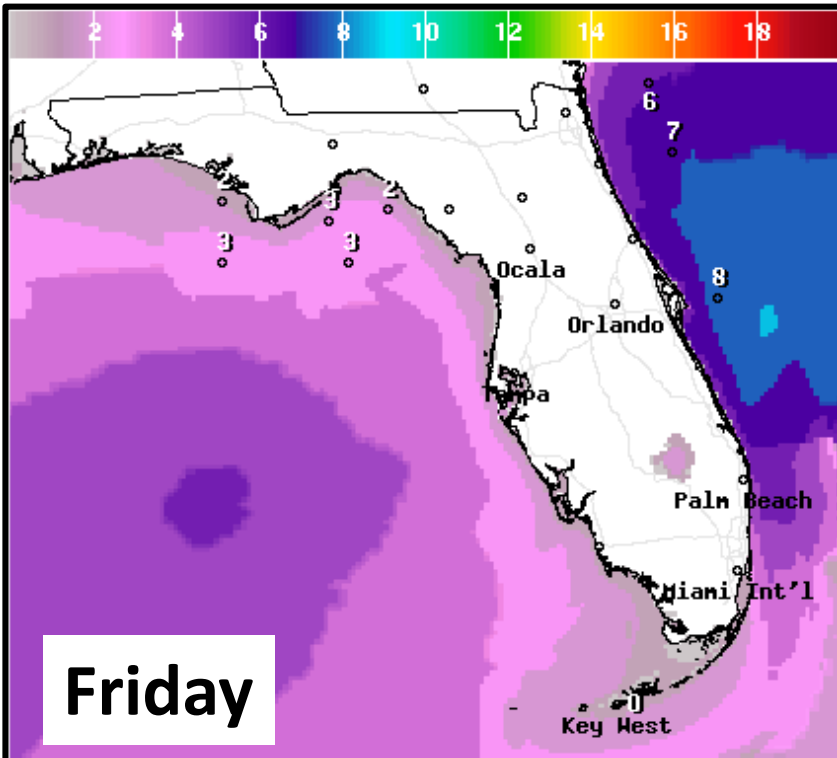
# Model Rainfall Totals Next 5 Days

**\*\*\*NOT A FORECAST\*\*\* Guidance Only**



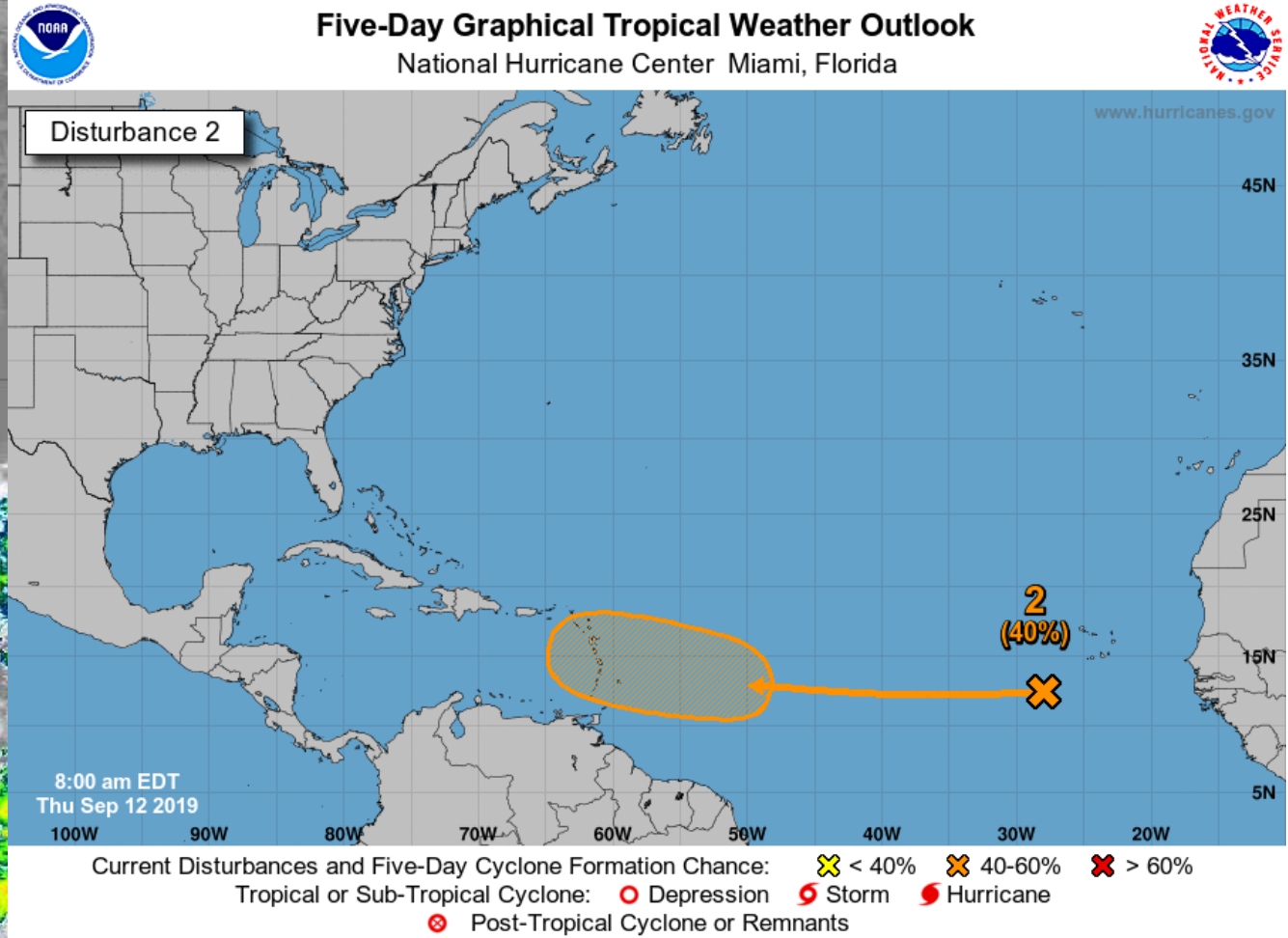
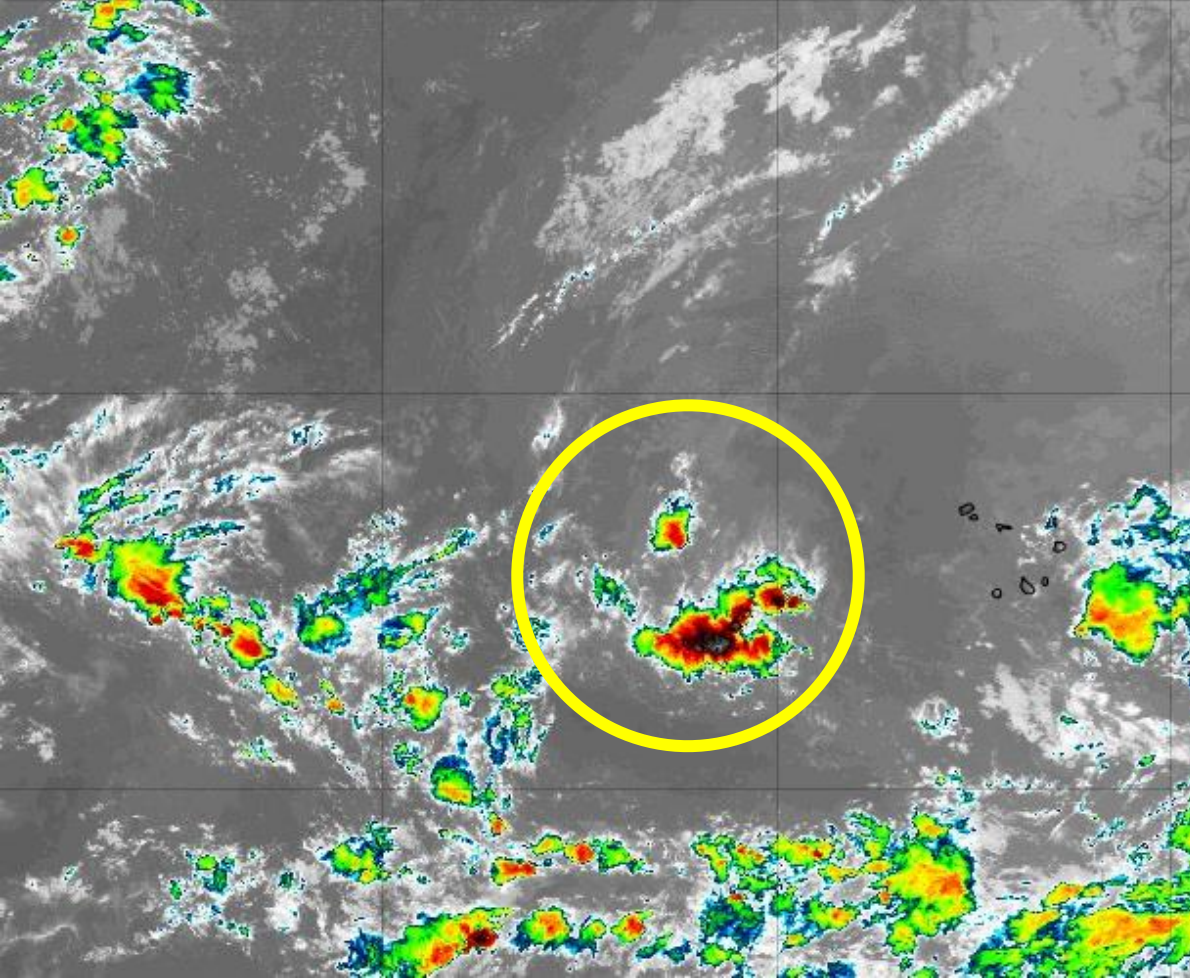
Rain totals will greatly depend on where the system tracks. A system that remains off the East Coast will keep the heaviest rain offshore. A system that moves into the Gulf will produce heavier rain across the state.

# Forecast Wave Heights



Breezy east to southeast winds will cause building waves and a **high risk for dangerous rip currents** this weekend along East Coast beaches. The rip current risk for the Panhandle beaches will be determined by the track of this system. At least a **moderate risk of rip currents** is expected along Panhandle beaches.





**Cabo Verde Wave:** A tropical wave located several hundred miles west of the Cabo Verde Islands is producing disorganized showers and thunderstorms. Conditions appear conducive for development, and a tropical depression could form early next week while the system moves westward over the tropical Atlantic.

- \* Formation chance through 48 hours...low...near 0 percent.
- \* Formation chance through 5 days...medium...40 percent.



# Summary

## **Invest 95L**

- A broad area of low pressure near the southeastern Bahamas is becoming better organized, and advisories may begin later today on a Potential Tropical Cyclone.
- The eventual track of 95L has become highly uncertain in the last 24 hours with very divergent models. Until a defined low-level center forms and consolidates, models will remain very spread on solutions.
- The National Hurricane Center is indicating a near 70% (high) chance of development over the next 48 hours, but an 80% (high) chance from days 3-5.

## **Cabo Verde Wave**

- A tropical wave west of the Cabo Verde Islands will move quickly across the tropical Atlantic and may gradually organize this weekend or early next week.
- The National Hurricane Center is indicating a near 0% (low) chance of development over the next 48 hours, but a 40% (medium) chance from days 3-5.

## **Florida Outlook:**

- It is too early to tell if the Cabo Verde Wave poses a threat to Florida. No impacts are expected for at least 7 days.
- Invest 95L will bring increased rain chances and potentially locally heavy rainfall to the state late this week/weekend, but any other details are uncertain. The rainfall threat highly depends on the track of the system.
- Breezy east to southeast winds will result in building waves and dangerous rip currents along East Coast beaches. Dangerous beach conditions will also be possible in the Panhandle if the system makes it into the Gulf.
- Any other threats from 95L are too uncertain and will be highly dependent on the system's evolution over the next 24 hours.
- The next name on the 2019 Atlantic storm name list is Humberto.

The next tropics packet will be issued Thursday afternoon. For the latest information on the tropics, please visit the National Hurricane Center website at [www.hurricanes.gov](http://www.hurricanes.gov). For the latest flood updates, see the latest products from your local National Weather Service, the [Southeast River Forecast Center](#), and the [Weather Prediction Center](#).



# TROPICAL UPDATE



Created by:

Cameron Young, Assistant State Meteorologist

[Cameron.Young@em.myflorida.com](mailto:Cameron.Young@em.myflorida.com)

State Meteorological Support Unit

Florida Division of Emergency Management

Users wishing to subscribe (approval pending) to this distribution list, register at:

[https://public.govdelivery.com/accounts/FLDEM/subscriber/new?topic\\_id=SERT\\_Met\\_Tropics](https://public.govdelivery.com/accounts/FLDEM/subscriber/new?topic_id=SERT_Met_Tropics).

Other reports available for subscription are available at:

<https://public.govdelivery.com/accounts/FLDEM/subscriber/new?preferences=true>