



# TROPICAL UPDATE



9 AM EDT

Monday, September 9, 2019

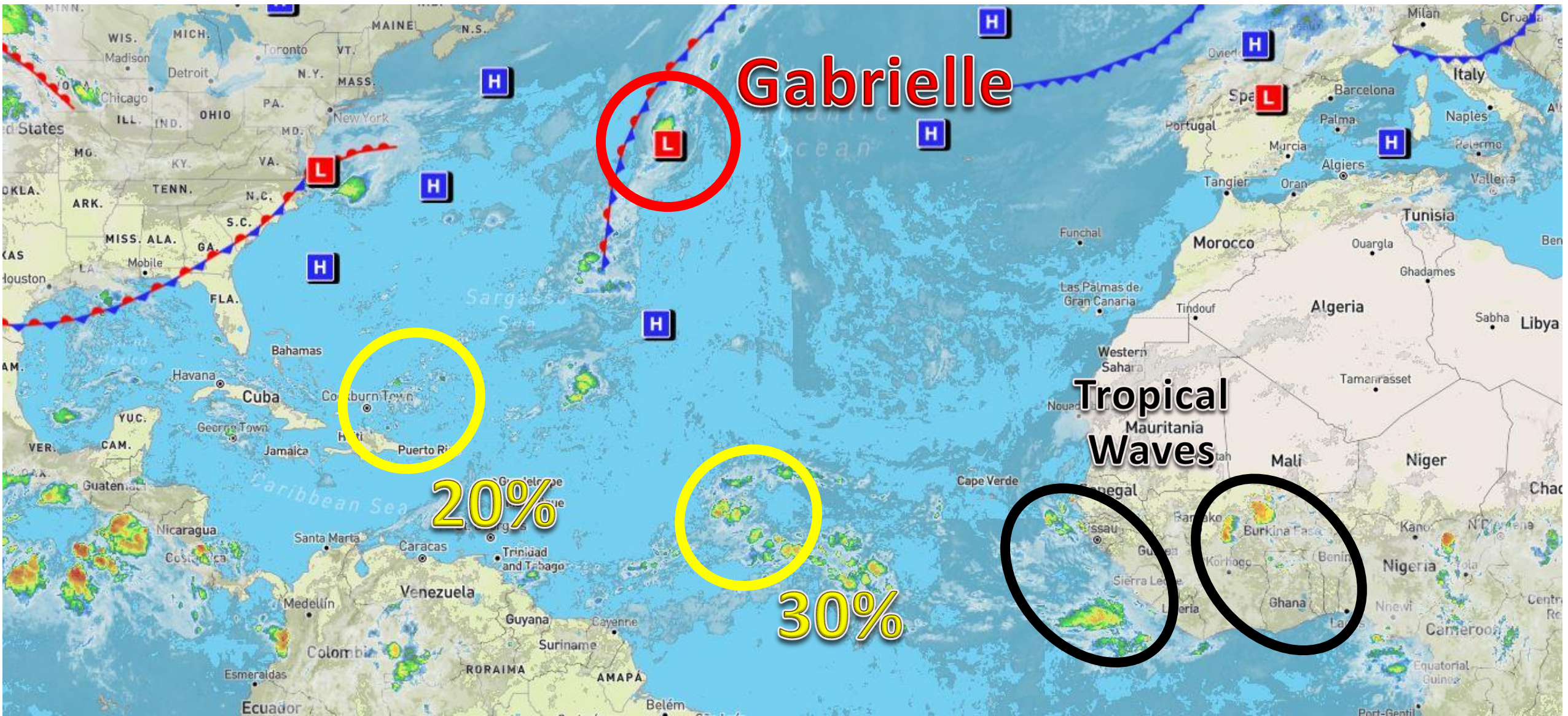
Tropical Storm Gabrielle, Invest 94L (30%), and  
Bahamas Low (20%)

This update is intended for government and emergency response officials, and is provided for informational and situational awareness purposes only. Forecast conditions are subject to change based on a variety of environmental factors. For additional information, or for any life safety concerns with an active weather event please contact your County Emergency Management or Public Safety Office, local National Weather Service forecast office, or visit the National Hurricane Center website at [www.hurricanes.gov](http://www.hurricanes.gov).



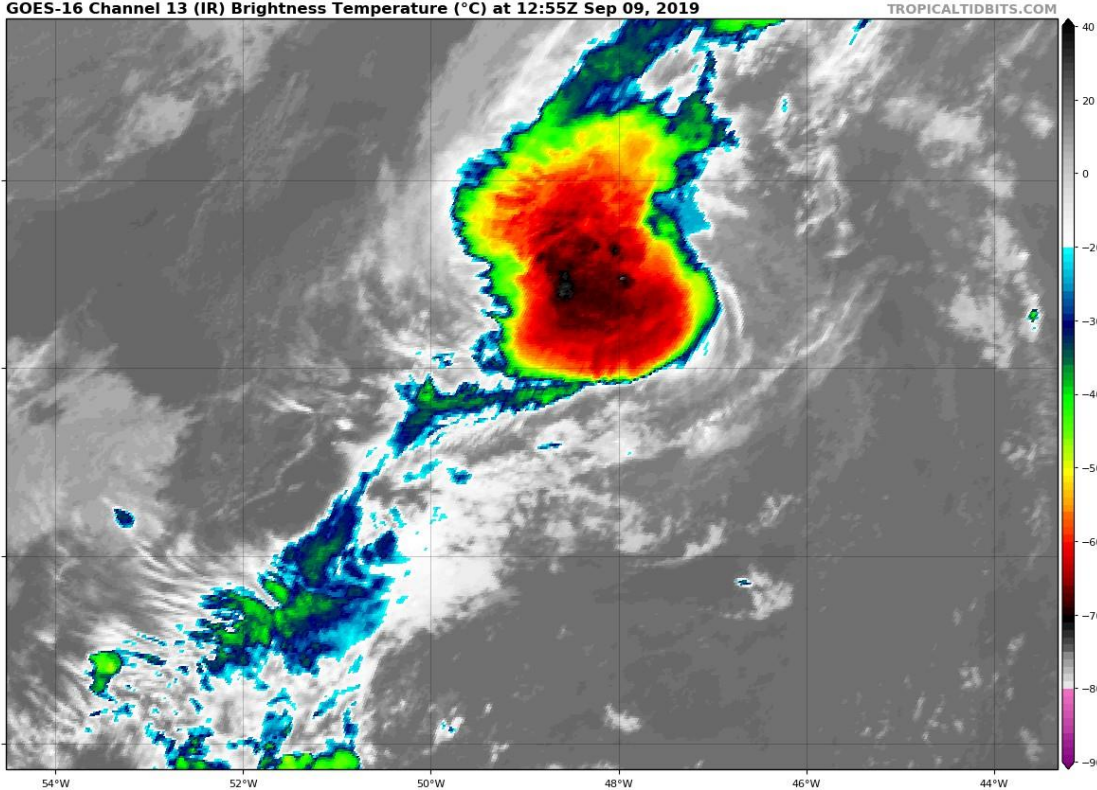
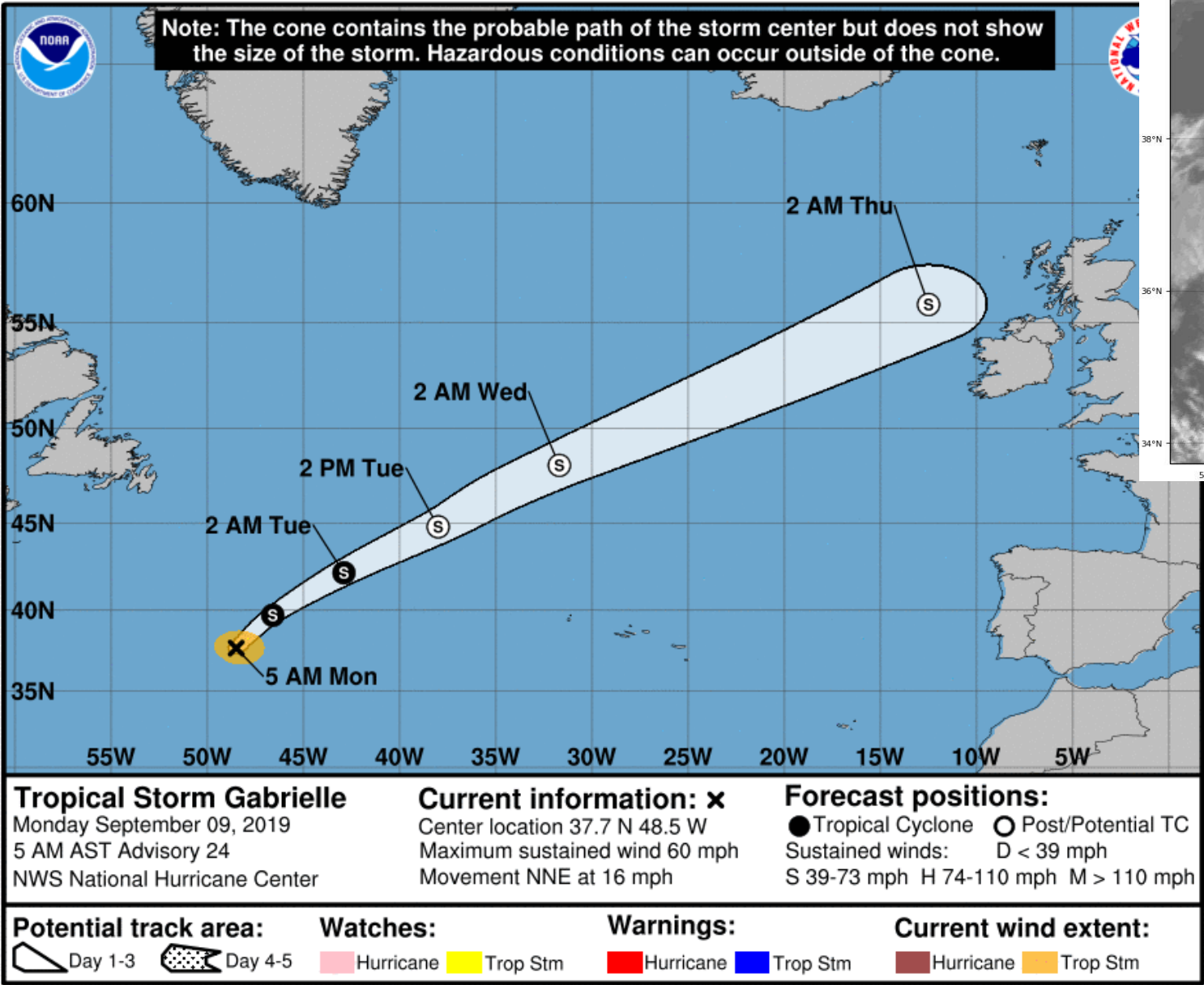
# Atlantic Basin Satellite Image

Chance of development: — None    — Low    — Medium    — High

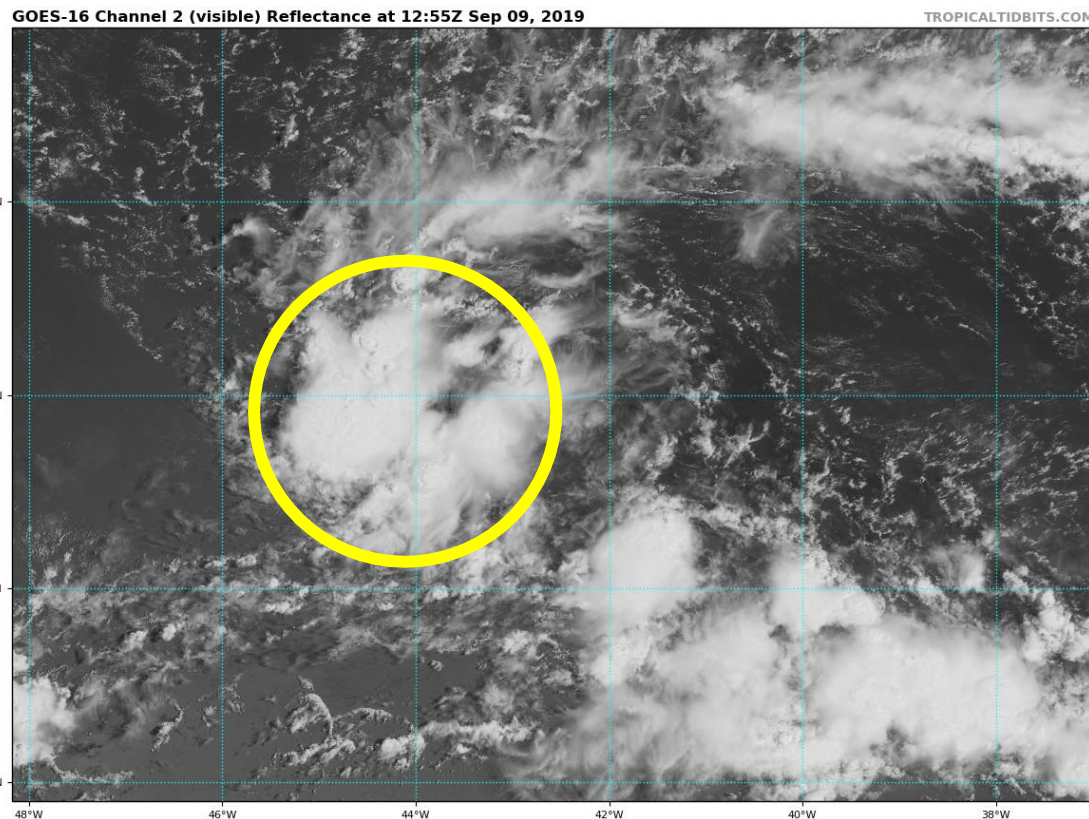




# Tropical Storm Gabrielle Satellite Image and Forecast Track



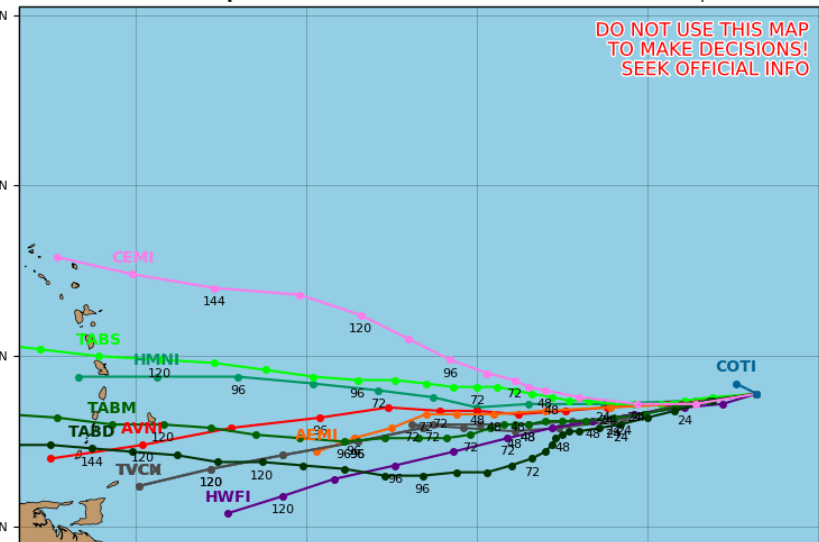
Tropical Storm Gabrielle remains disorganized as it traverses the open waters of the North Atlantic. It has turned to the northeast and will continue to accelerate.



## Invest 94L Model Track Guidance

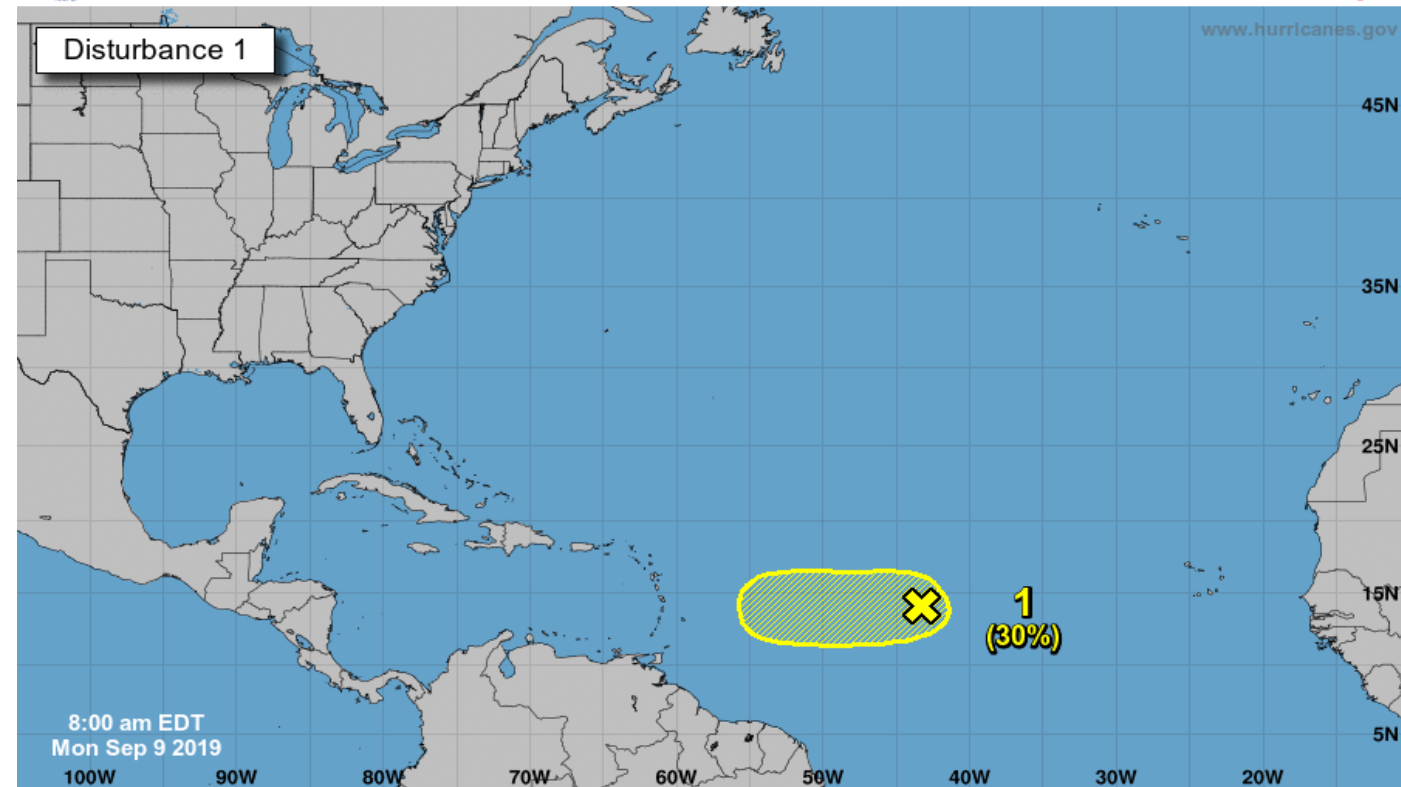
Initialized at 06z Sep 09 2019

Levi Cowan - tropicaltidbits.com



## Five-Day Graphical Tropical Weather Outlook

National Hurricane Center Miami, Florida



Current Disturbances and Five-Day Cyclone Formation Chance:   
 Tropical or Sub-Tropical Cyclone:   
 X < 40% X 40-60% X > 60%   
 O Depression O Storm O Hurricane   
 O Post-Tropical Cyclone or Remnants

**Invest 94L:** A weak area of low pressure, associated with a tropical wave, continues to produce disorganized showers and thunderstorms about midway between the Cabo Verde Islands and the Windward Islands. Some slow development of this system is possible during the next two or three days before upper-level winds become unfavorable for tropical cyclone formation. This system is expected to move generally westward across the tropical Atlantic Ocean for the next several days.

\* Formation chance through 48 hours...low...20 percent.

\* Formation chance through 5 days...low...30 percent.



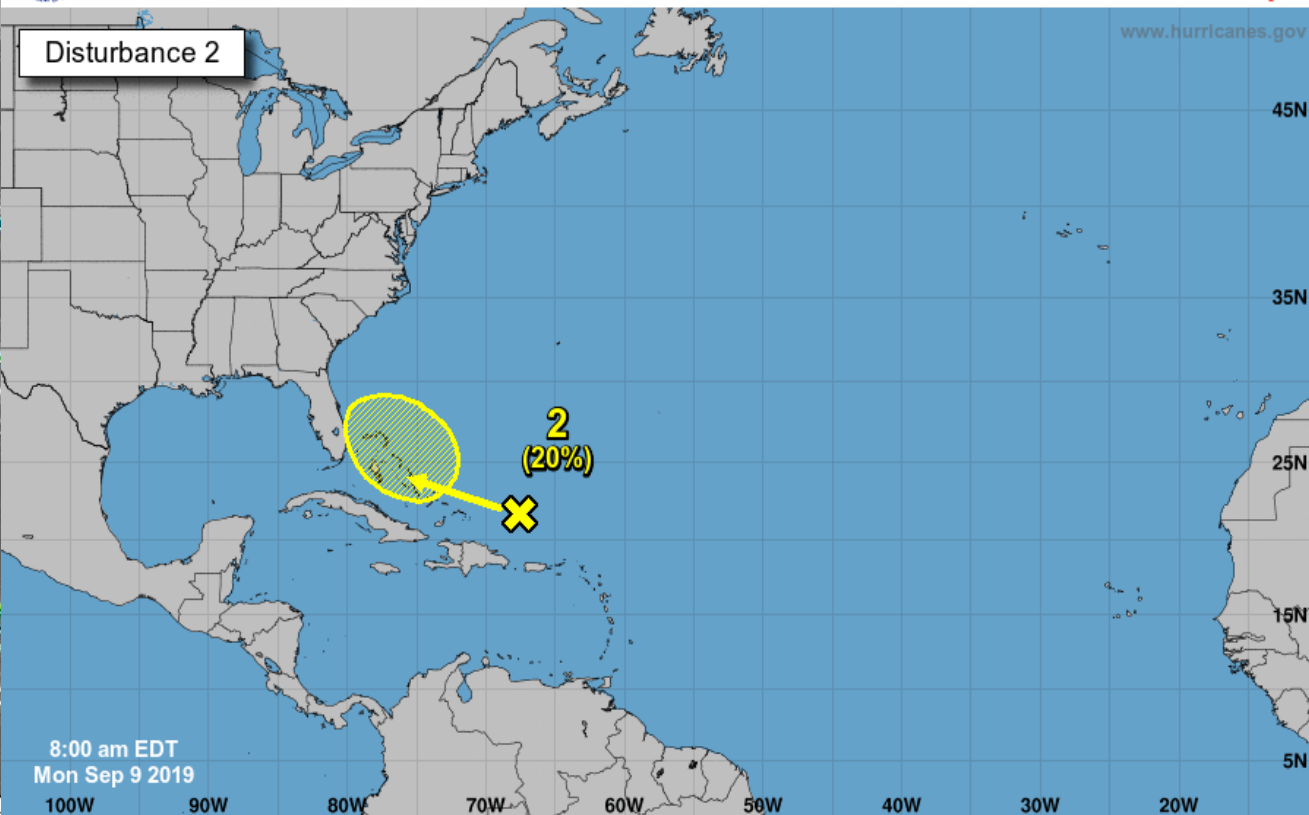
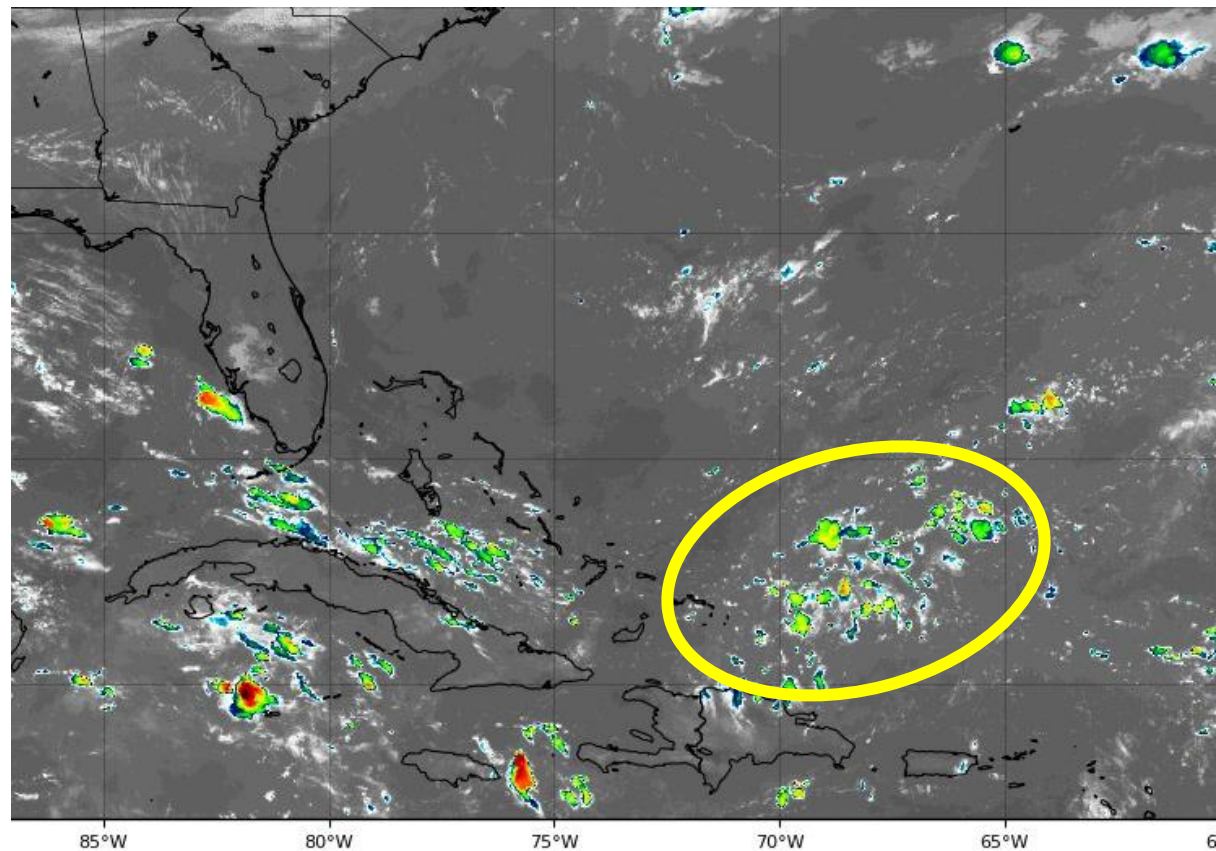


## Five-Day Graphical Tropical Weather Outlook

National Hurricane Center Miami, Florida



www.hurricanes.gov



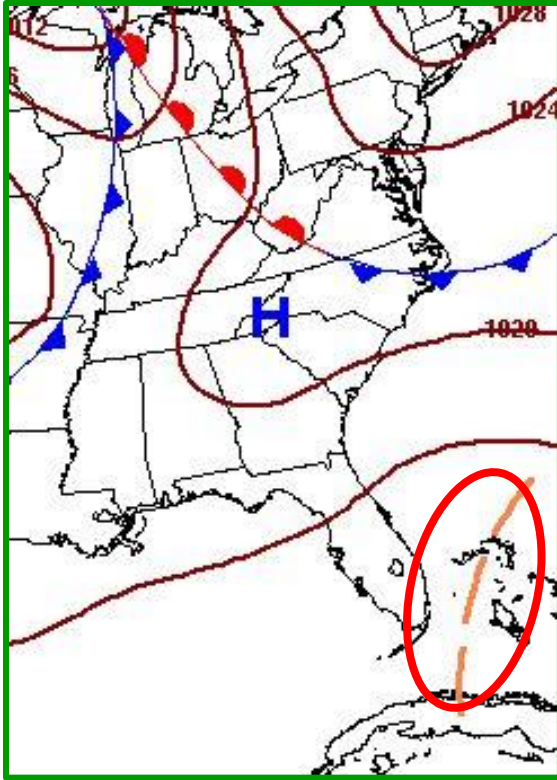
Current Disturbances and Five-Day Cyclone Formation Chance: < 40% 40-60% > 60%  
Tropical or Sub-Tropical Cyclone: Depression Storm Hurricane  
 Post-Tropical Cyclone or Remnants

**Bahamas Low**: Disorganized cloudiness and showers located a few hundred miles north and northeast of the Greater Antilles are associated with a surface trough interacting with an upper-level low. Little to no development of this system is expected during the next day or two while the system moves west-northwestward, north of the Greater Antilles. Environmental conditions could become a little more conducive for development when the disturbance moves near the Bahamas and Florida late this week.

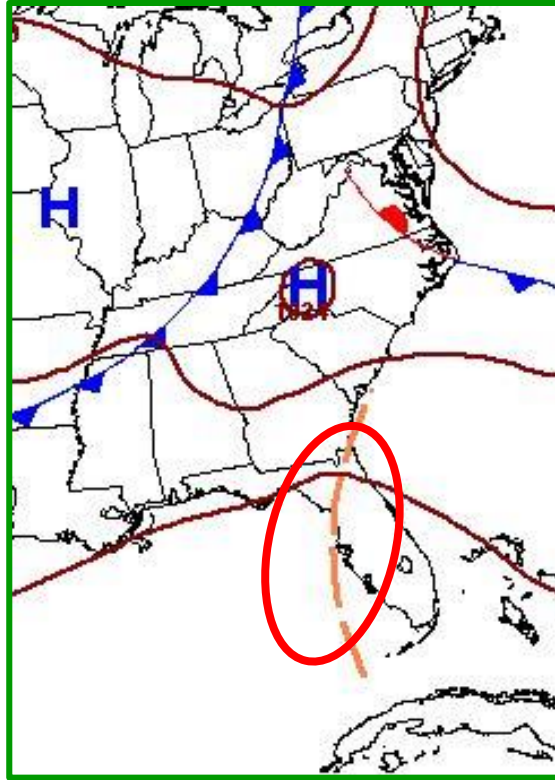
\* Formation chance through 48 hours...low...near 0 percent.

\* Formation chance through 5 days...low...20 percent.

# Forecast Weather Maps with Fronts



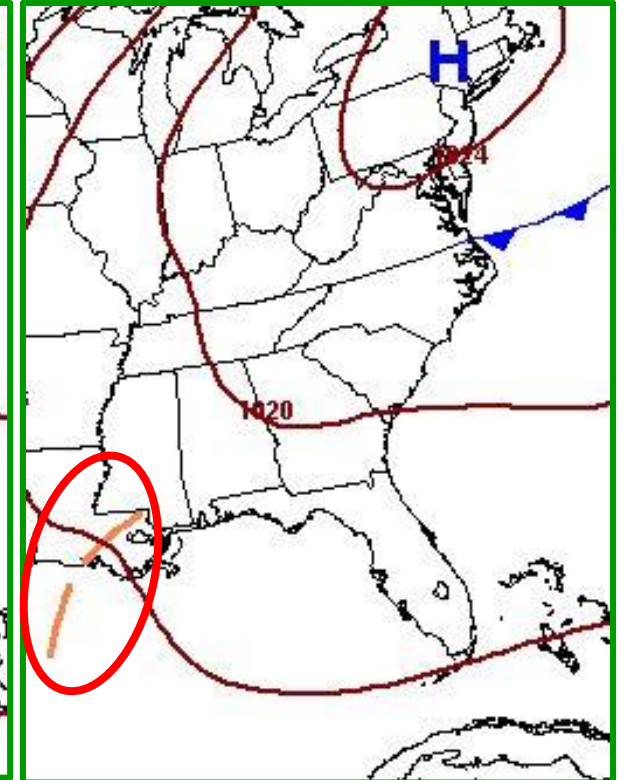
**Friday**



**Saturday**



**Sunday**



**Monday**

A tropical wave will move across the state this weekend, bringing at least an increase in afternoon showers and thunderstorms.

# Summary

## **Tropical Storm Gabrielle**

- At 5 AM ET Monday, the center of Tropical Storm Gabrielle was located about 1,170 miles west of the Azores and moving to the north-northeast at 16 mph.
- Maximum sustained winds are 60 mph. Gabrielle will continue northeast and accelerate towards the North Atlantic with little change in strength.

## **Invest 94L**

- The broad low pressure system is currently producing little thunderstorm activity, but gradual organization is possible over the next few days. By late week, conditions are now forecast to become more unfavorable for development.
- The National Hurricane Center is indicating only a 20% (low) chance of development over the next 48 hours, and a 30% (low) chance of it becoming a tropical depression over the next 5 days.
- These chances decreased overnight due to a continued trend with global models showing minimal development of this system.
- Computer models show a general westward movement towards the Leeward Islands over the next 5 days. Beyond that time, the tropical wave dissipates as it moves into an unfavorable development.

## **Bahamas Low**

- A broad area of low pressure north of Puerto Rico is producing disorganized showers and thunderstorms.
- Environmental conditions do not favor development over the next 48 hours. However, once the system moves west towards the Bahamas and Southwest Atlantic, conditions could become more favorable for development later this week.
- The National Hurricane Center is indicating a near 0% (low) chance of development over the next 48 hours, and a 20% (low) chance from days 3-5.

## **Florida Outlook:**

- Gabrielle poses no threat to Florida.
- It is too early to tell if Invest 94L poses a threat to Florida. No impacts are expected for at least 7 days.
- The Bahamas Low may bring increased rain chances to the state late this week/weekend, but any other details are uncertain.
- The next name on the 2019 Atlantic storm name list is Humberto.

The next tropics packet will be issued late Tuesday morning. For the latest information on the tropics, please visit the National Hurricane Center website at [www.hurricanes.gov](http://www.hurricanes.gov). For the latest flood updates, see the latest products from your local National Weather Service, the [Southeast River Forecast Center](#), and the [Weather Prediction Center](#).





# TROPICAL UPDATE



Created by:

Michael Spagnolo, Deputy State Meteorologist

[Michael.Spagnolo@em.myflorida.com](mailto:Michael.Spagnolo@em.myflorida.com)

State Meteorological Support Unit

Florida Division of Emergency Management

Users wishing to subscribe (approval pending) to this distribution list, register at:

[https://public.govdelivery.com/accounts/FLDEM/subscriber/new?topic\\_id=SERT\\_Met\\_Tropics](https://public.govdelivery.com/accounts/FLDEM/subscriber/new?topic_id=SERT_Met_Tropics).

Other reports available for subscription are available at:

<https://public.govdelivery.com/accounts/FLDEM/subscriber/new?preferences=true>