



TROPICAL UPDATE



10 AM EDT

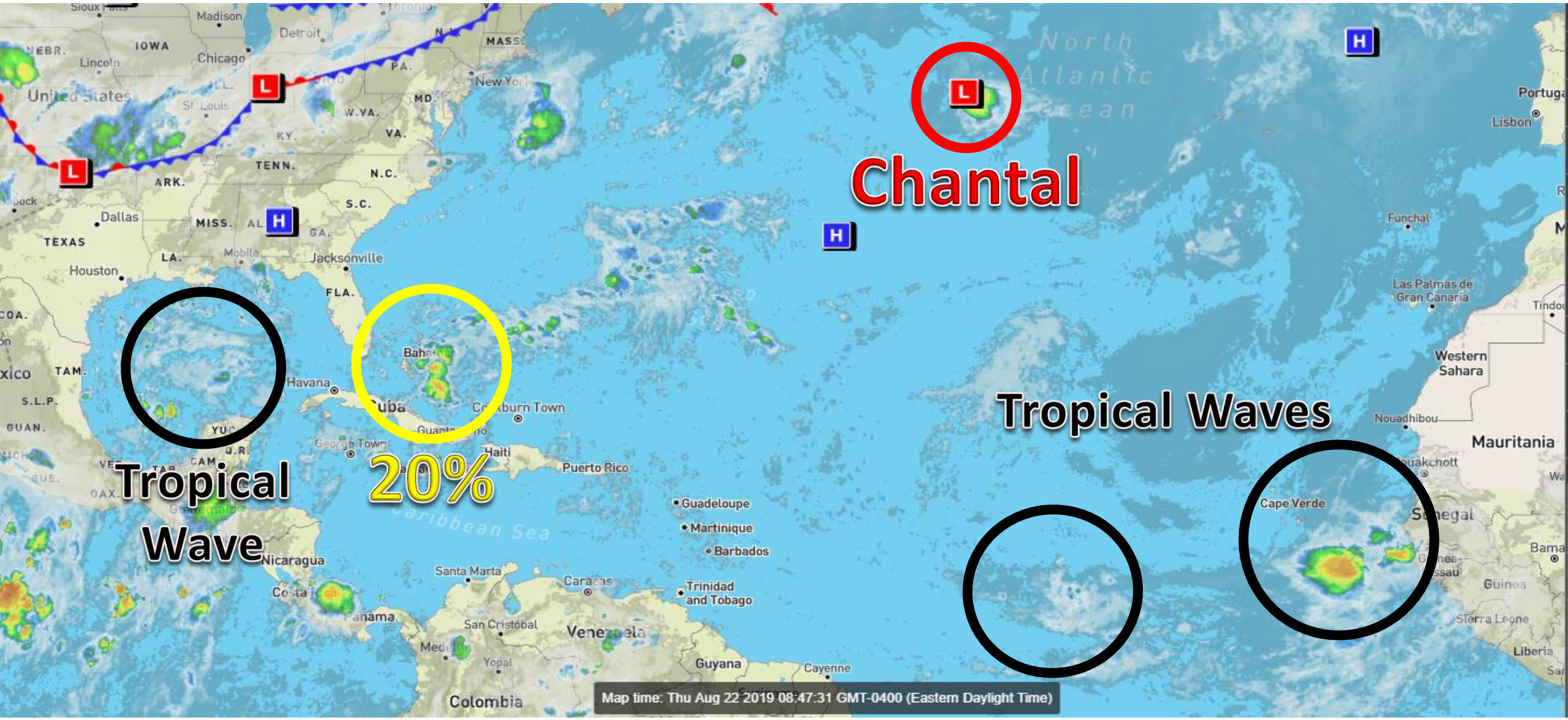
Thursday, August 22, 2019

Tropical Depression Chantal & Tropical
Wave Over Bahamas (20%)

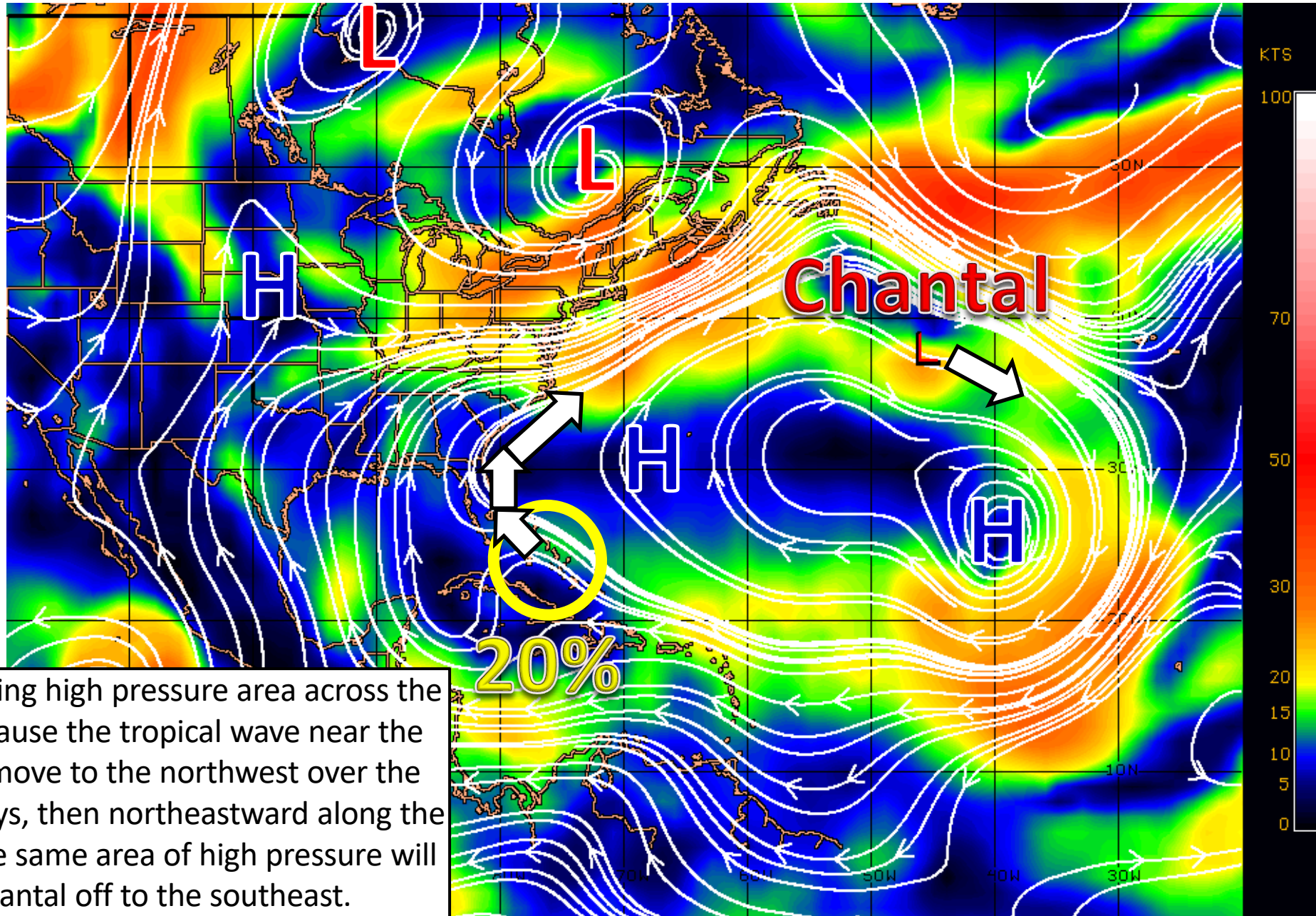
This update is intended for government and emergency response officials, and is provided for informational and situational awareness purposes only. Forecast conditions are subject to change based on a variety of environmental factors. For additional information, or for any life safety concerns with an active weather event please contact your County Emergency Management or Public Safety Office, local National Weather Service forecast office, or visit the National Hurricane Center website at www.hurricanes.gov.

Atlantic Basin Satellite Image

Chance of development: — None — Low — Medium — High

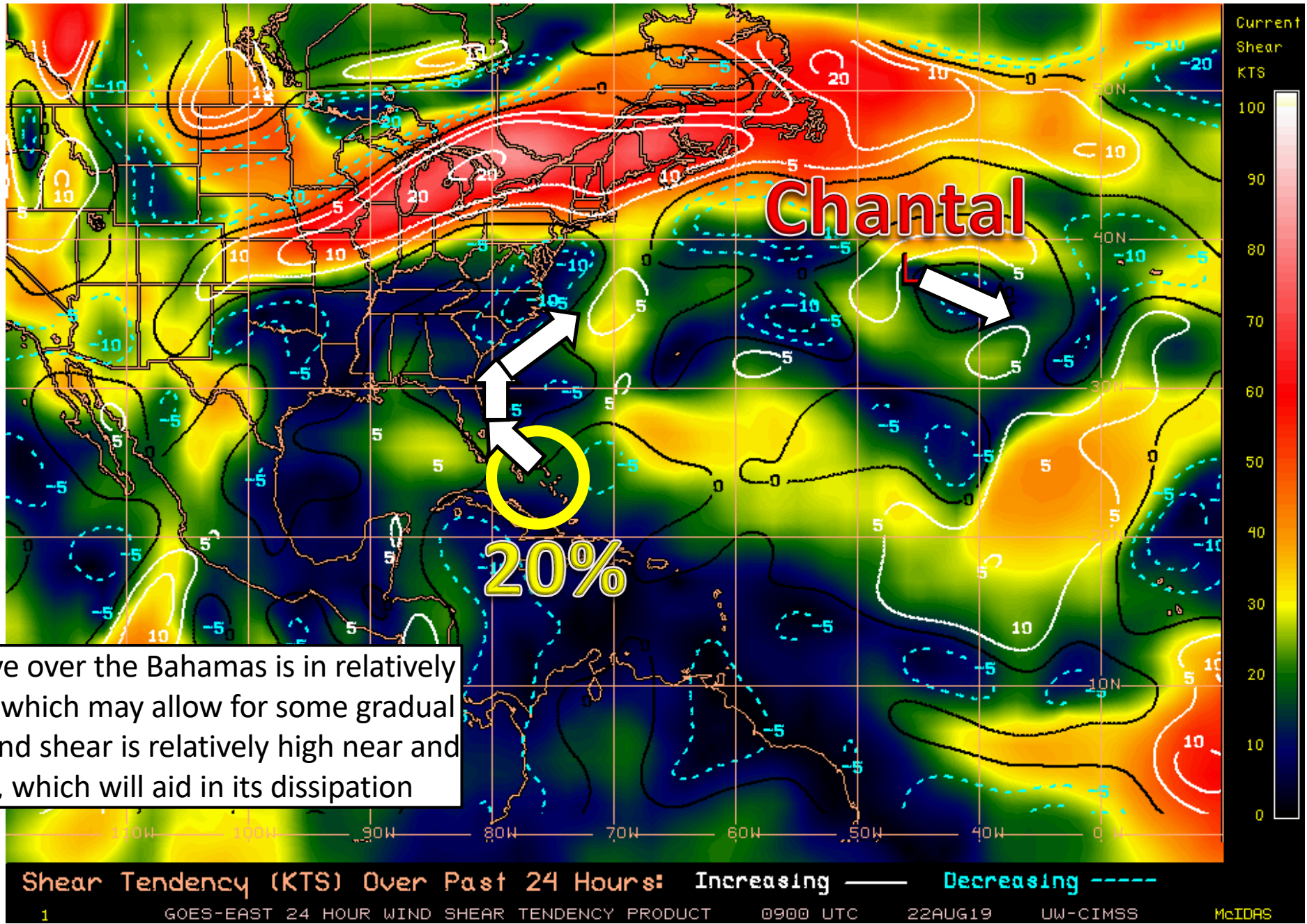


Steering Currents



A large, sprawling high pressure area across the Atlantic will cause the tropical wave near the Bahamas to move to the northwest over the next couple days, then northeastward along the East Coast. The same area of high pressure will steer Chantal off to the southeast.

Wind Shear (shaded) and Wind Shear Tendencies (contoured)



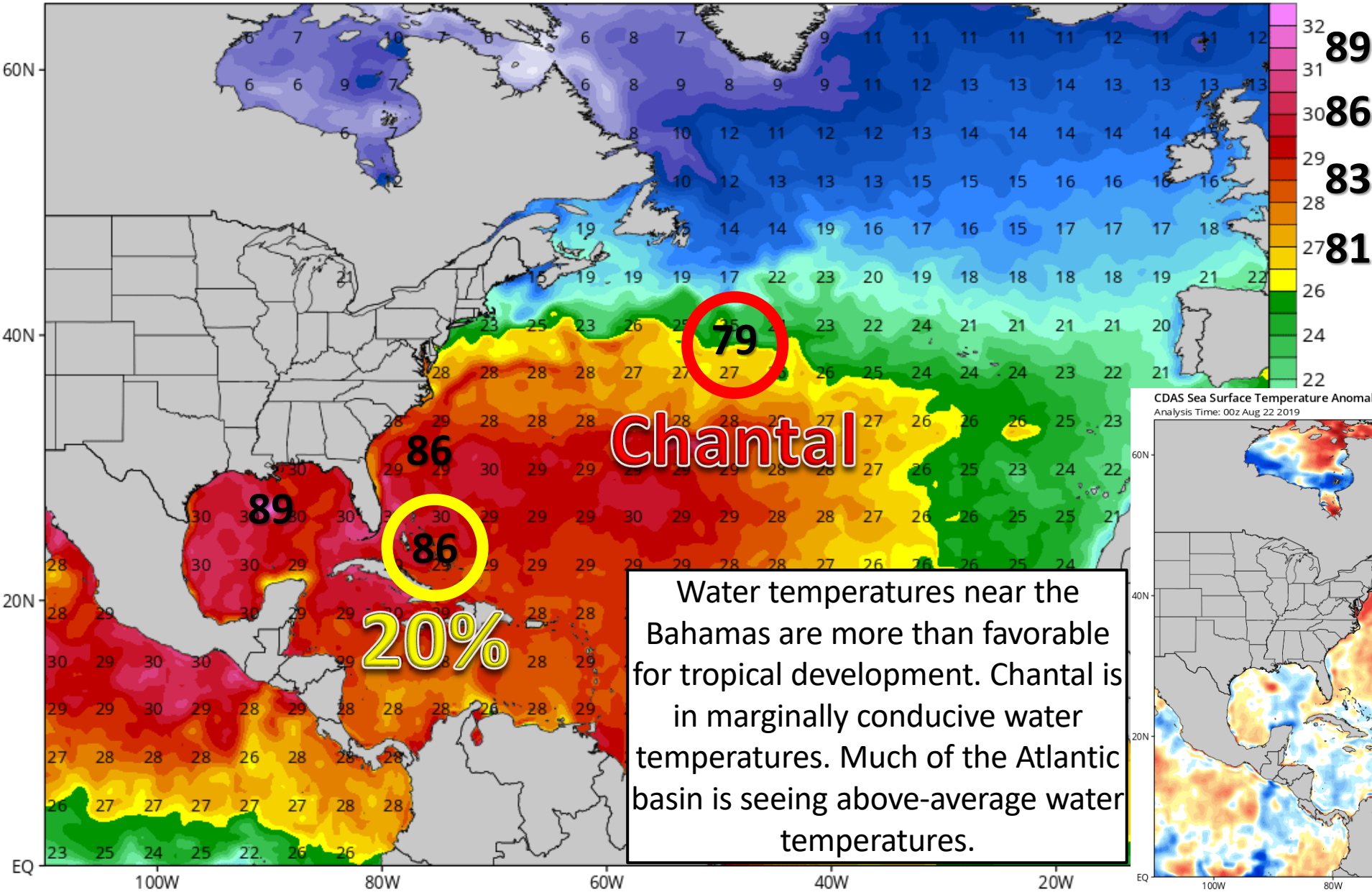
The tropical wave over the Bahamas is in relatively low wind shear, which may allow for some gradual organization. Wind shear is relatively high near and over Chantal, which will aid in its dissipation

North Atlantic Sea Surface Temperatures and Anomalies

CDAS Sea Surface Temperature (°C)

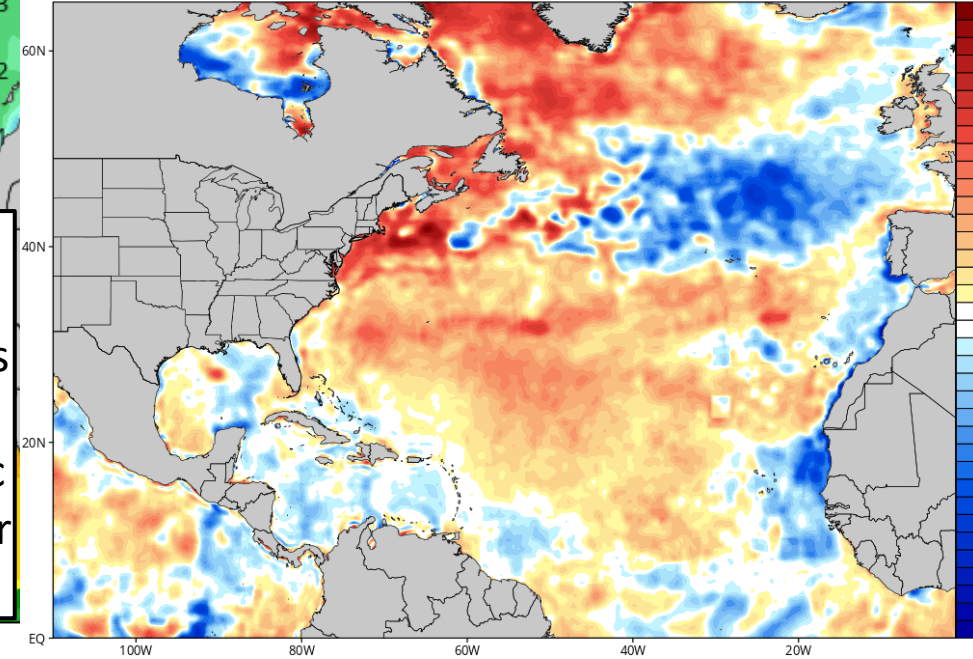
Analysis Time: 00z Aug 22 2019

TROPICALTIDBITS.COM



CDAS Sea Surface Temperature Anomaly (°C) (based on CFSR 1981-2010 Climatology)
Analysis Time: 00z Aug 22 2019

TROPICALTIDBITS.COM



Water temperatures near the Bahamas are more than favorable for tropical development. Chantal is in marginally conducive water temperatures. Much of the Atlantic basin is seeing above-average water temperatures.

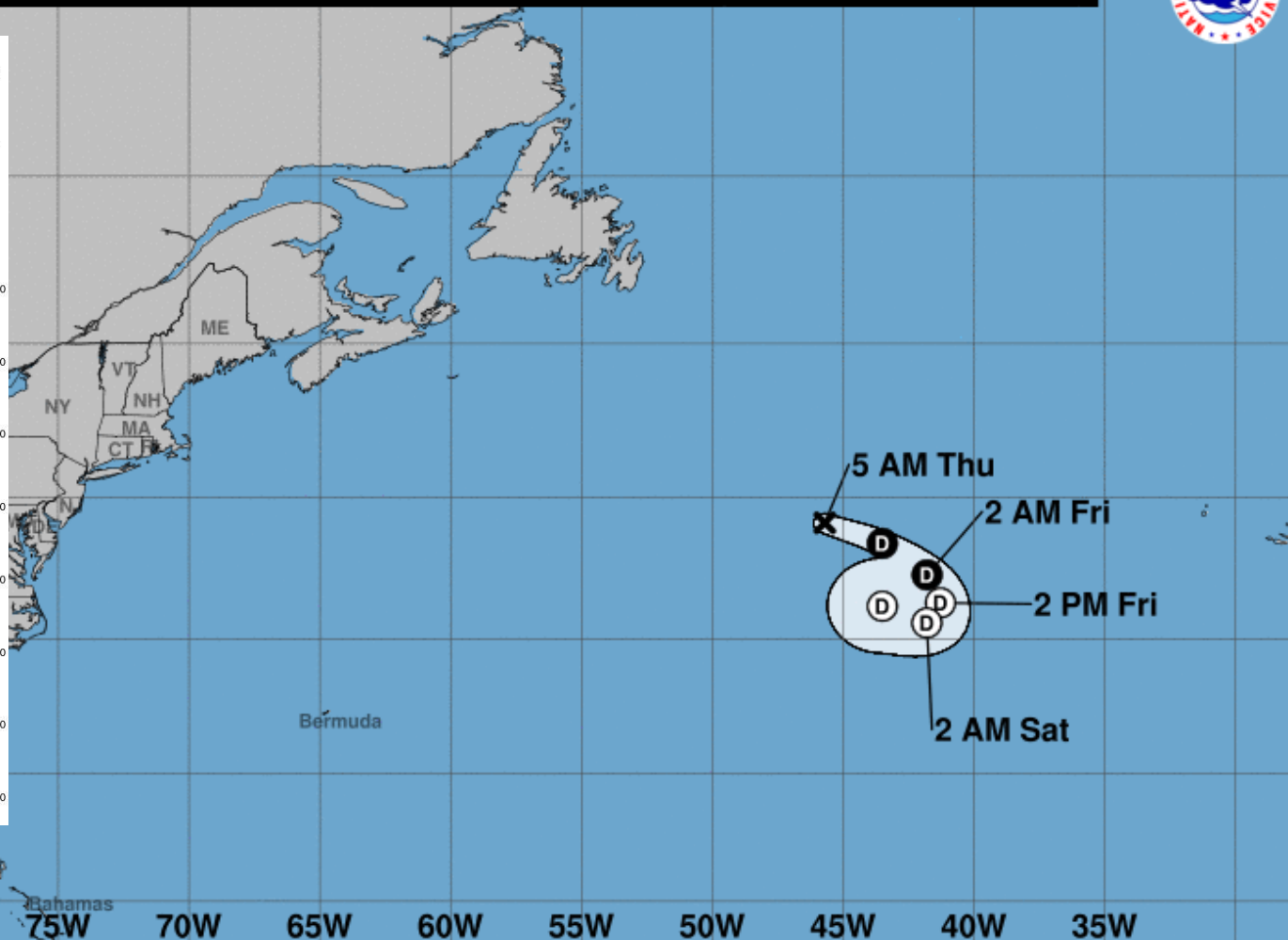
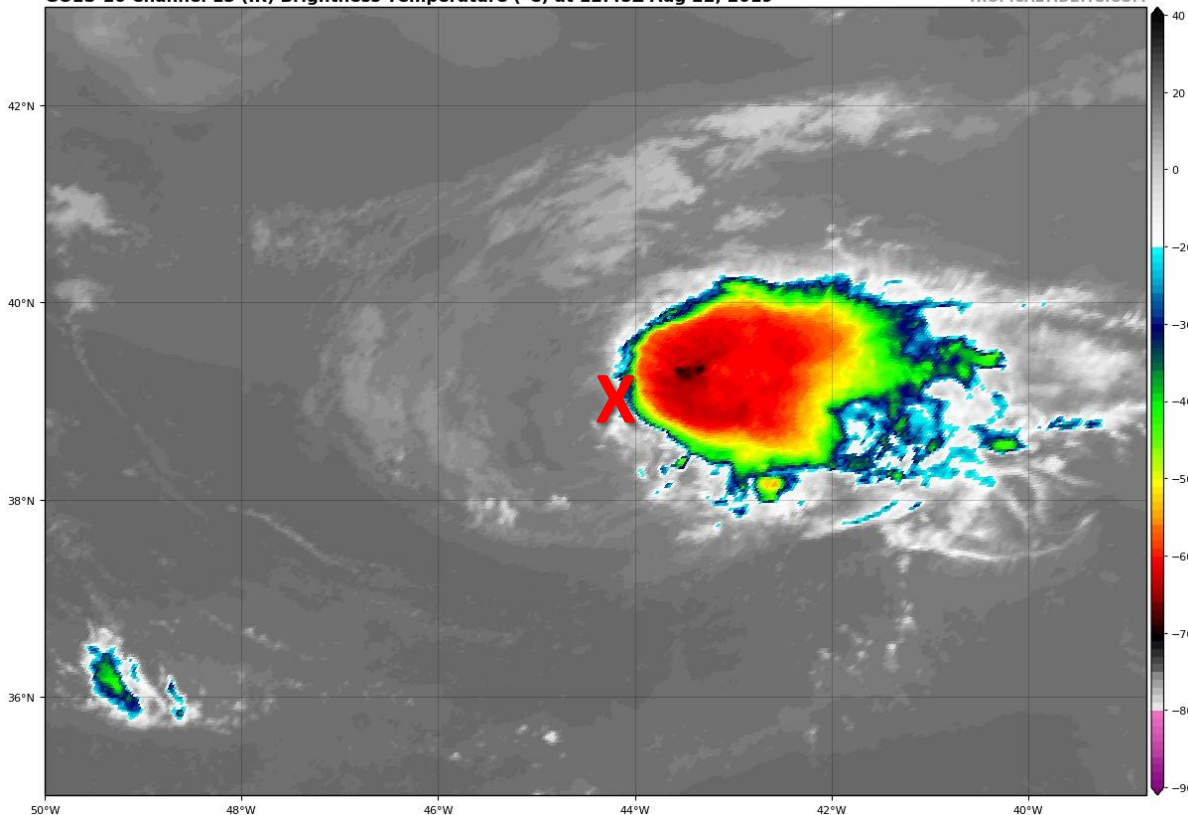


Note: The cone contains the probable path of the storm center but does not show the size of the storm. Hazardous conditions can occur outside of the cone.



GOES-16 Channel 13 (IR) Brightness Temperature (°C) at 12:45Z Aug 22, 2019

TROPICALTIDBITS.COM



Chantal weakened to a tropical depression last night. It is battling some wind shear, dry air, and only marginal sea surface temperatures. Further weakening is expected, and Chantal will likely dissipate tonight or Friday as it makes a small loop over the north central Atlantic.

Tropical Depression Chantal
Thursday August 22, 2019
5 AM AST Advisory 6
NWS National Hurricane Center

Current information: X
Center location 39.1 N 45.7 W
Maximum sustained wind 35 mph
Movement E at 17 mph

Forecast positions:
● Tropical Cyclone ○ Post/Potential TC
Sustained winds: D < 39 mph
S 39-73 mph H 74-110 mph M > 110 mph

Potential track area:

Day 1-3 Day 4-5

Watches:

Hurricane Trop Stm

Warnings:

Hurricane Trop Stm

Current wind extent:

Hurricane Trop Stm



Five-Day Graphical Tropical Weather Outlook

National Hurricane Center Miami, Florida



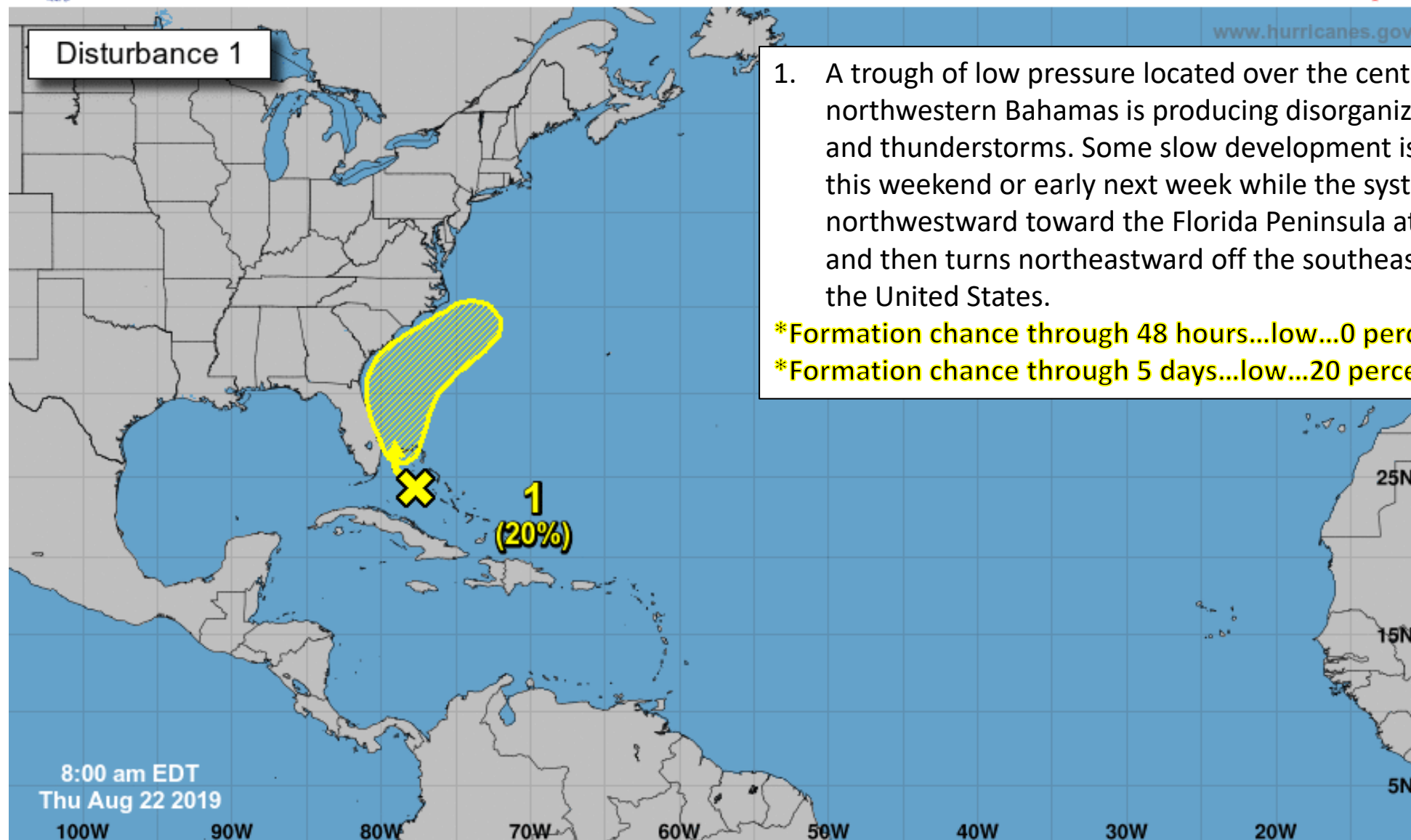
www.hurricanes.gov

Disturbance 1

1. A trough of low pressure located over the central and northwestern Bahamas is producing disorganized showers and thunderstorms. Some slow development is possible by this weekend or early next week while the system moves northwestward toward the Florida Peninsula at 5 to 10 mph and then turns northeastward off the southeastern coast of the United States.

*Formation chance through 48 hours...low...0 percent.

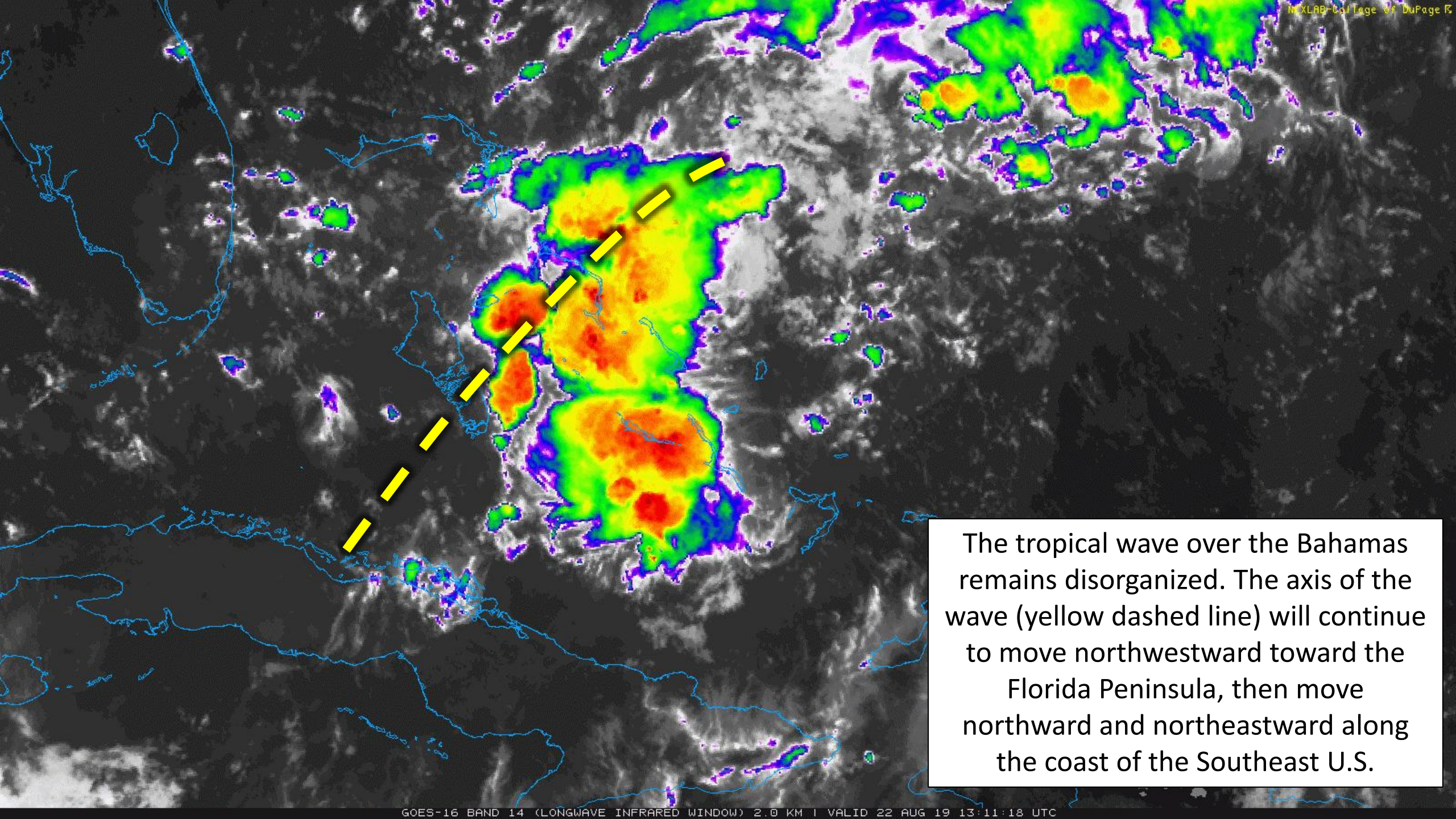
*Formation chance through 5 days...low...20 percent.



Current Disturbances and Five-Day Cyclone Formation Chance: < 40% 40-60% > 60%

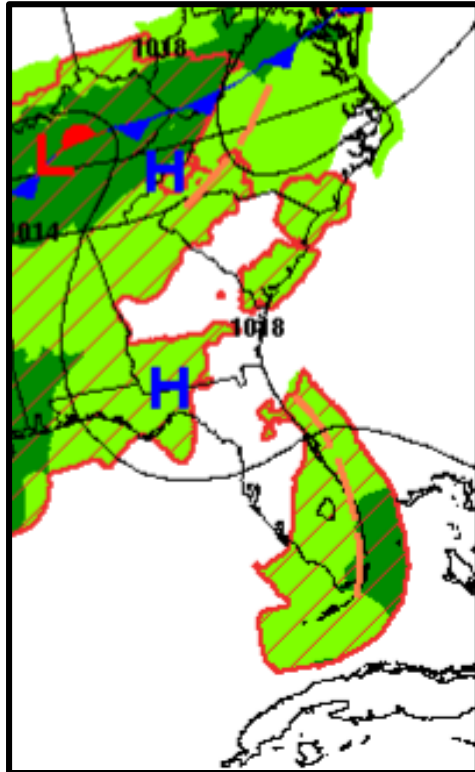
Tropical or Sub-Tropical Cyclone: Depression Storm Hurricane

Post-Tropical Cyclone or Remnants

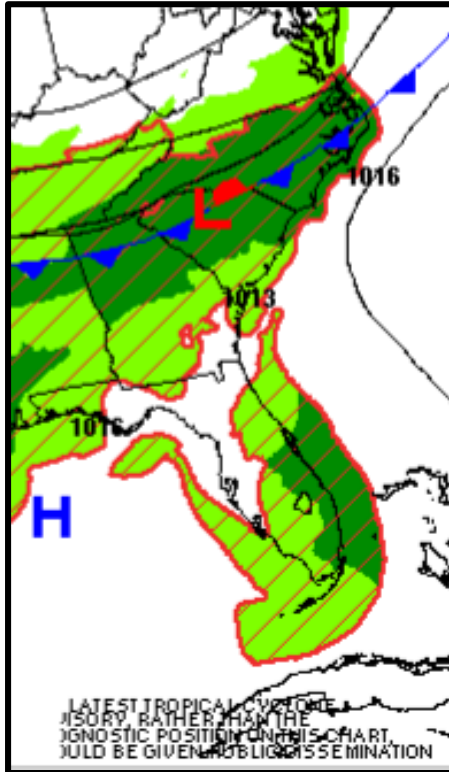


The tropical wave over the Bahamas remains disorganized. The axis of the wave (yellow dashed line) will continue to move northwestward toward the Florida Peninsula, then move northward and northeastward along the coast of the Southeast U.S.

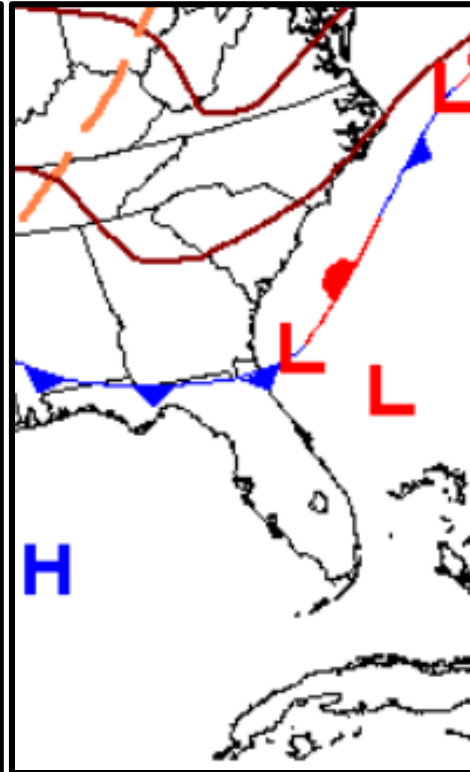
Forecast Weather Maps with Fronts



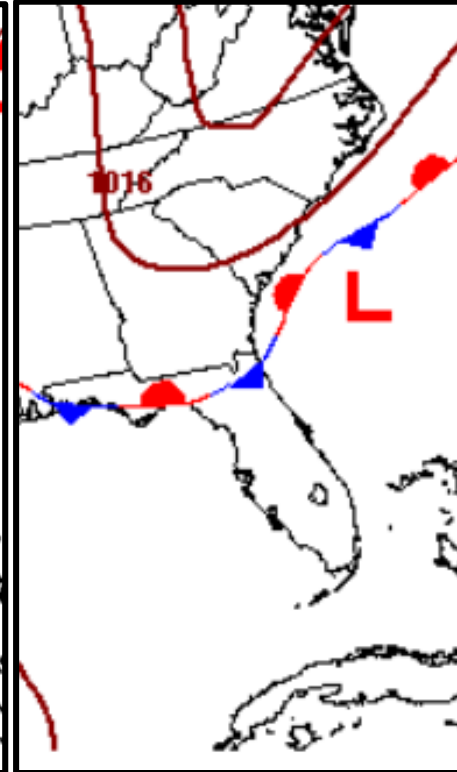
Friday



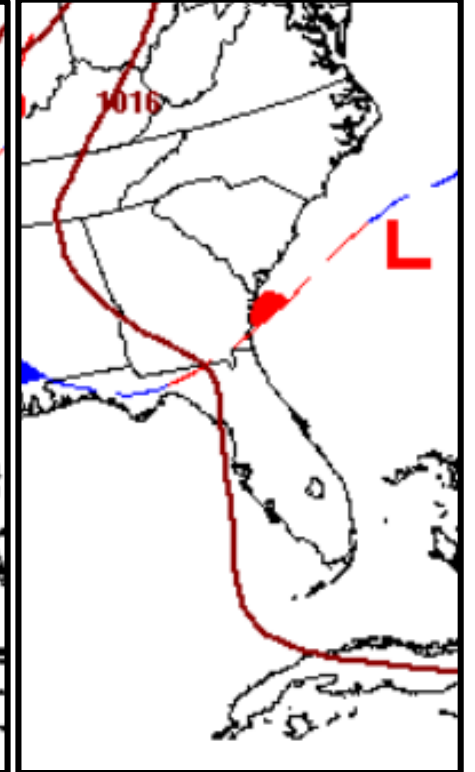
Saturday



Sunday



Monday



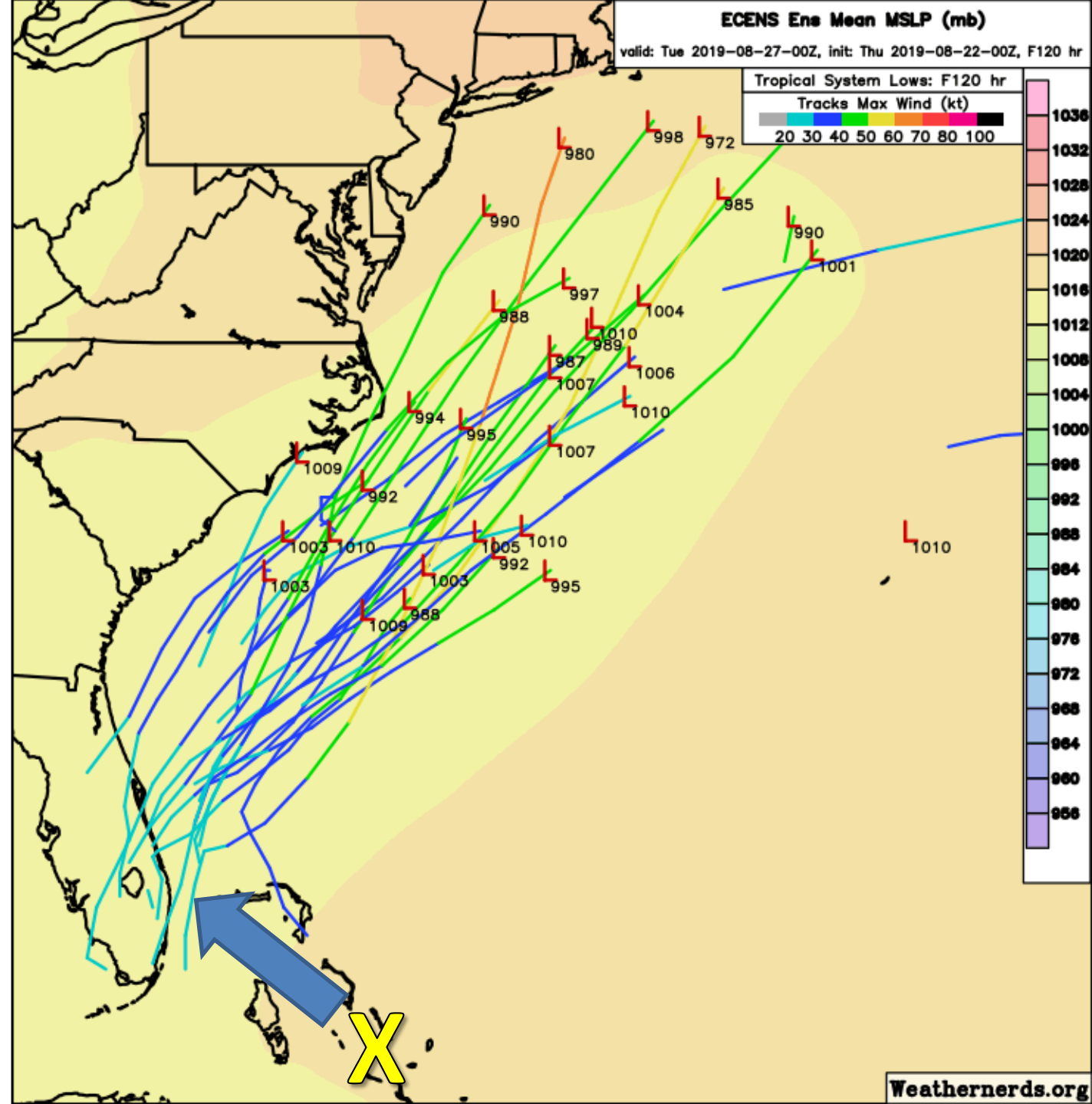
Tuesday

A cold front will move southward over the Southeast U.S. through the next couple days. This front will help to steer the tropical wave northward then northeastward over the weekend into early next week. An increase in rain chances across the Peninsula is expected as the cold front and tropical wave both approach. Locally heavy rainfall is also possible.

Potential Model Forecast Tracks Next 5 Days

The current models show that development is not expected until the wave starts to move away from Florida. Note that none of the models have it developing before reaching the state. The wave (or whatever develops from the wave) will continue to move northeastward paralleling the U.S. East Coast.

Most of the showers and storms will likely be on the eastern side of the wave. However, an increase in moisture and rain chances is expected. Some locally heavy rainfall is also possible.



Rainfall Totals Next 7 Days

**MARGINAL
(MRGL)**

**Isolated flash
floods possible**

Localized and
primarily affecting
places that can
experience rapid
runoff with heavy
rainfall.

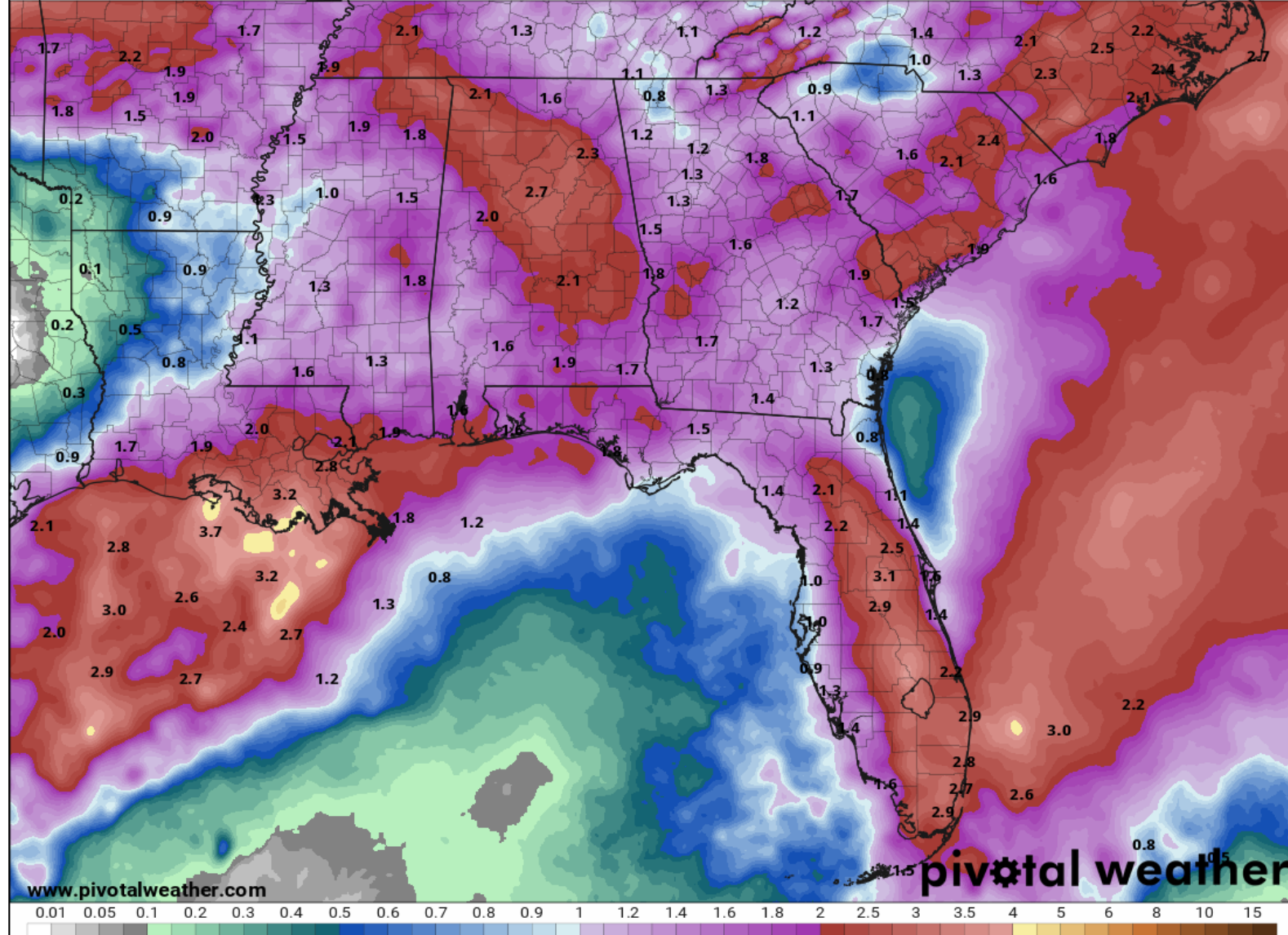
**Flash Flood
Risk Friday**

Some locally heavier rainfall may occur. However, these forecast rain totals also account for typical afternoon thunderstorms. If heavier rainfall occurs, localized flooding may be possible given saturated soils from recent heavy rain events. There is a **Marginal Risk of flash flooding** (level 1 of 4) for South Florida on Friday.

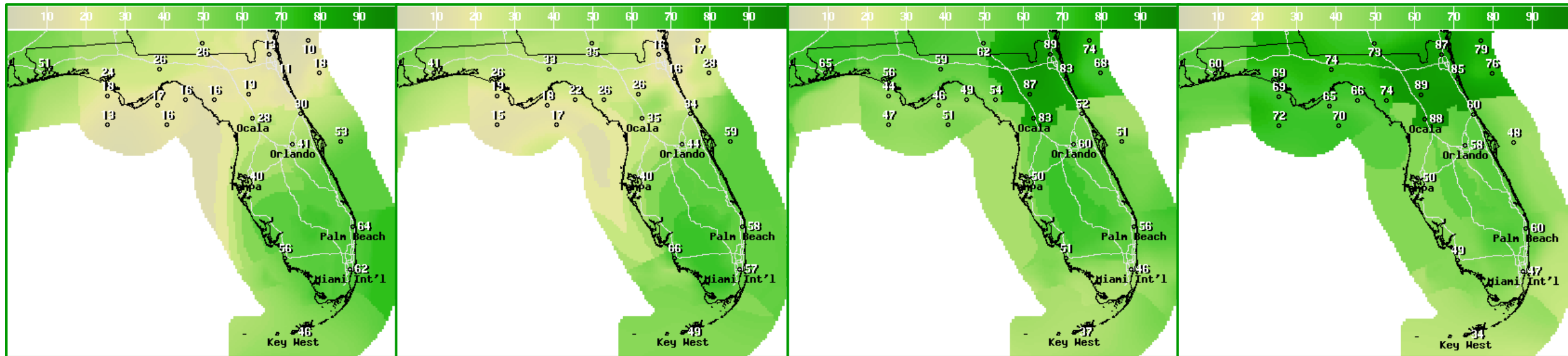
7-Day Precipitation (in)

Ending Thursday, Aug. 29, 2019 at 8 a.m. EDT

Init: Thu 2019-08-22 12z WPC



Rain Chances Into Early Next Week



Friday

Saturday

Sunday

Monday

Rain chances will increase in South Florida on Friday as the tropical wave approaches, then along a majority of the Peninsula over the weekend as the tropical wave turns northward and a cold front approaches from the north.

Summary

Tropical Depression Chantal

- Tropical Depression Chantal is located about 645 miles southeast of Newfoundland and moving to the east at 17 mph. Maximum sustained winds are at 35 mph.
- Chantal will likely dissipate tonight or Friday as it makes a small loop over the northern Atlantic.

Bahama Tropical Wave

- A tropical wave over the central and northwestern Bahamas is producing disorganized showers and thunderstorms.
- Some slow development of this system is possible later this week as it moves northwest and then north off the coast of the Southeast.
- The National Hurricane Center gives this disturbance a near 0% (low) chance of development over the next 48 hours and a 20% (low) chance over the next 5 days.

Florida Outlook:

- Tropical Depression Chantal poses no threat to Florida or the United States.
- Seasonable rain chances and temperatures continue across the state today.
- This weekend, the combination of an approaching cold front and an increase in tropical moisture, rain chances will be high statewide.
- Any other details on the tropical wave in the Bahamas are uncertain. At this time, significant development of this system close to Florida is not expected and any development of the wave is more likely as it moves away from the state. However, this tropical wave should be monitored, especially given the recent heavy rainfall in parts of the state.
- Due to recent rainfall, several Big Bend and West Coast rivers remain in minor flood stage, but have generally crested and are falling.

The next tropics packet will be issued Friday morning. For the latest information on the tropics, please visit the National Hurricane Center website at www.hurricanes.gov. For the latest flood updates, see the latest products from your local National Weather Service, the [Southeast River Forecast Center](#), and the [Weather Prediction Center](#).



TROPICAL UPDATE



Created by:

Cameron Young, Assistant State Meteorologist

Cameron.Young@em.myflorida.com

State Meteorological Support Unit

Florida Division of Emergency Management

Users wishing to subscribe (approval pending) to this distribution list, register at https://public.govdelivery.com/accounts/FLDEM/subscriber/new?topic_id=SERT_Met_Tropics. Other reports available for subscription are available at <https://public.govdelivery.com/accounts/FLDEM/subscriber/new?preferences=true>