



# TROPICAL UPDATE



10 AM EDT

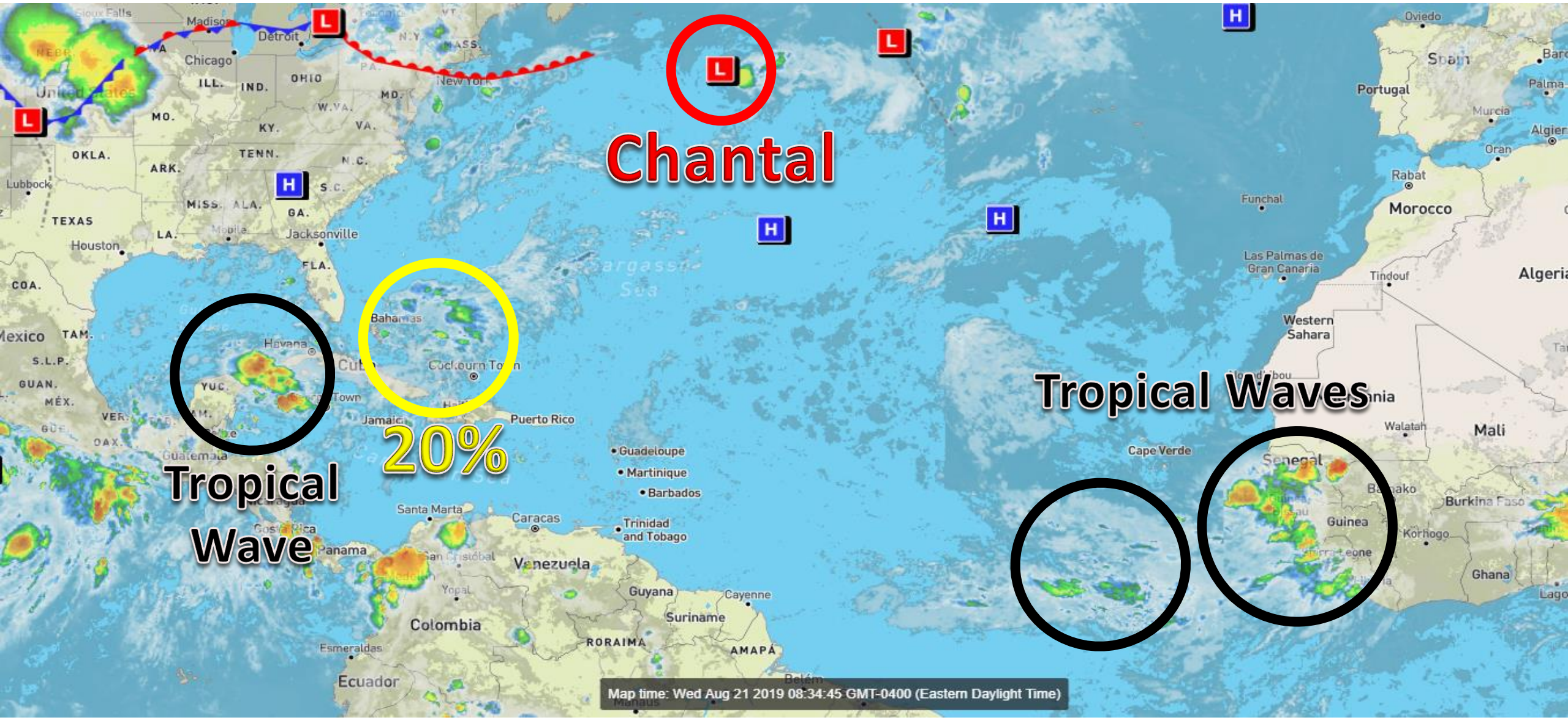
Wednesday, August 21, 2019

Tropical Storm Chantal & Tropical Wave  
Over Bahamas (20%)

This update is intended for government and emergency response officials, and is provided for informational and situational awareness purposes only. Forecast conditions are subject to change based on a variety of environmental factors. For additional information, or for any life safety concerns with an active weather event please contact your County Emergency Management or Public Safety Office, local National Weather Service forecast office, or visit the National Hurricane Center website at [www.hurricanes.gov](http://www.hurricanes.gov).

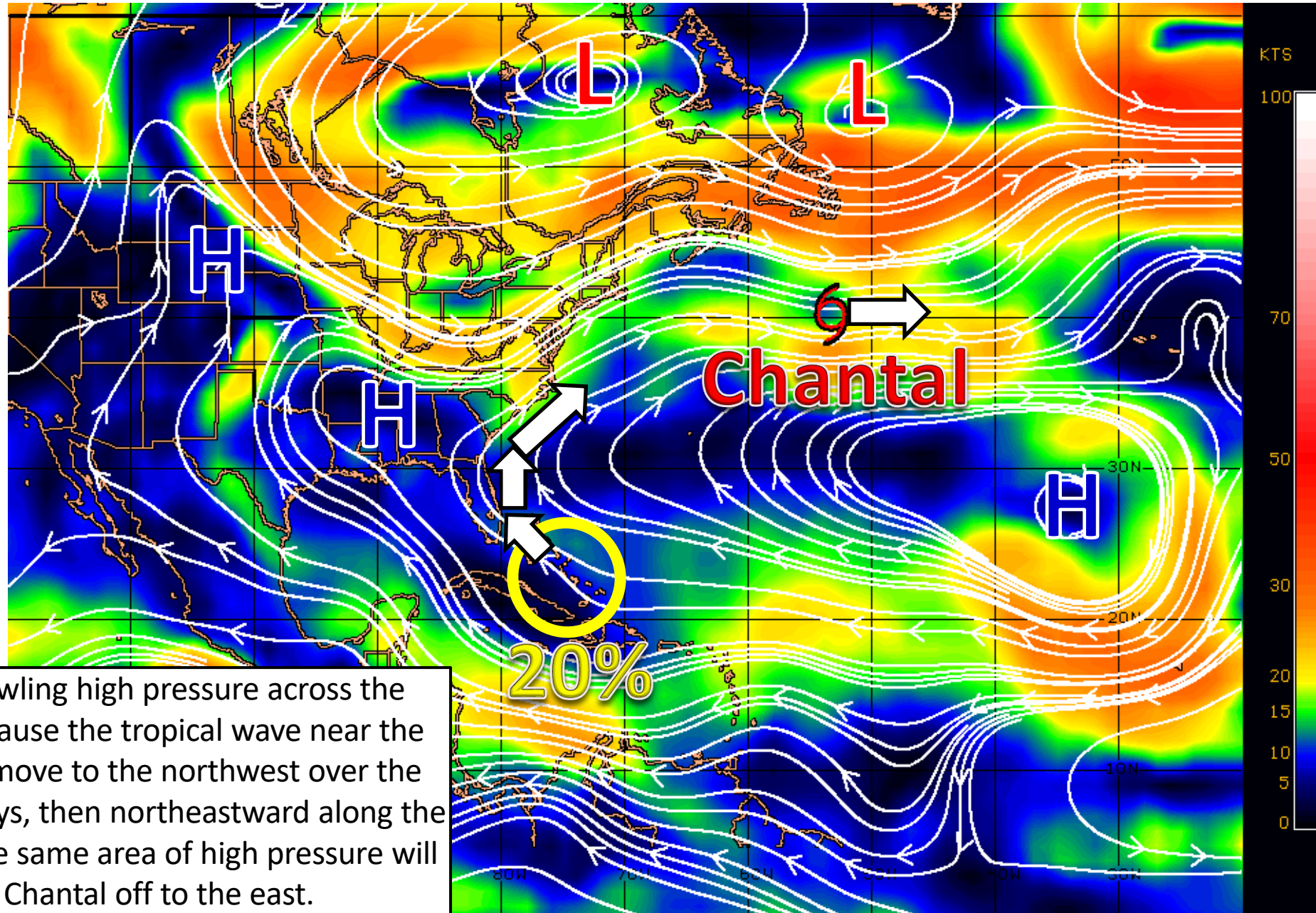
# Atlantic Basin Satellite Image

Chance of development: — None    — Low    — Medium    — High

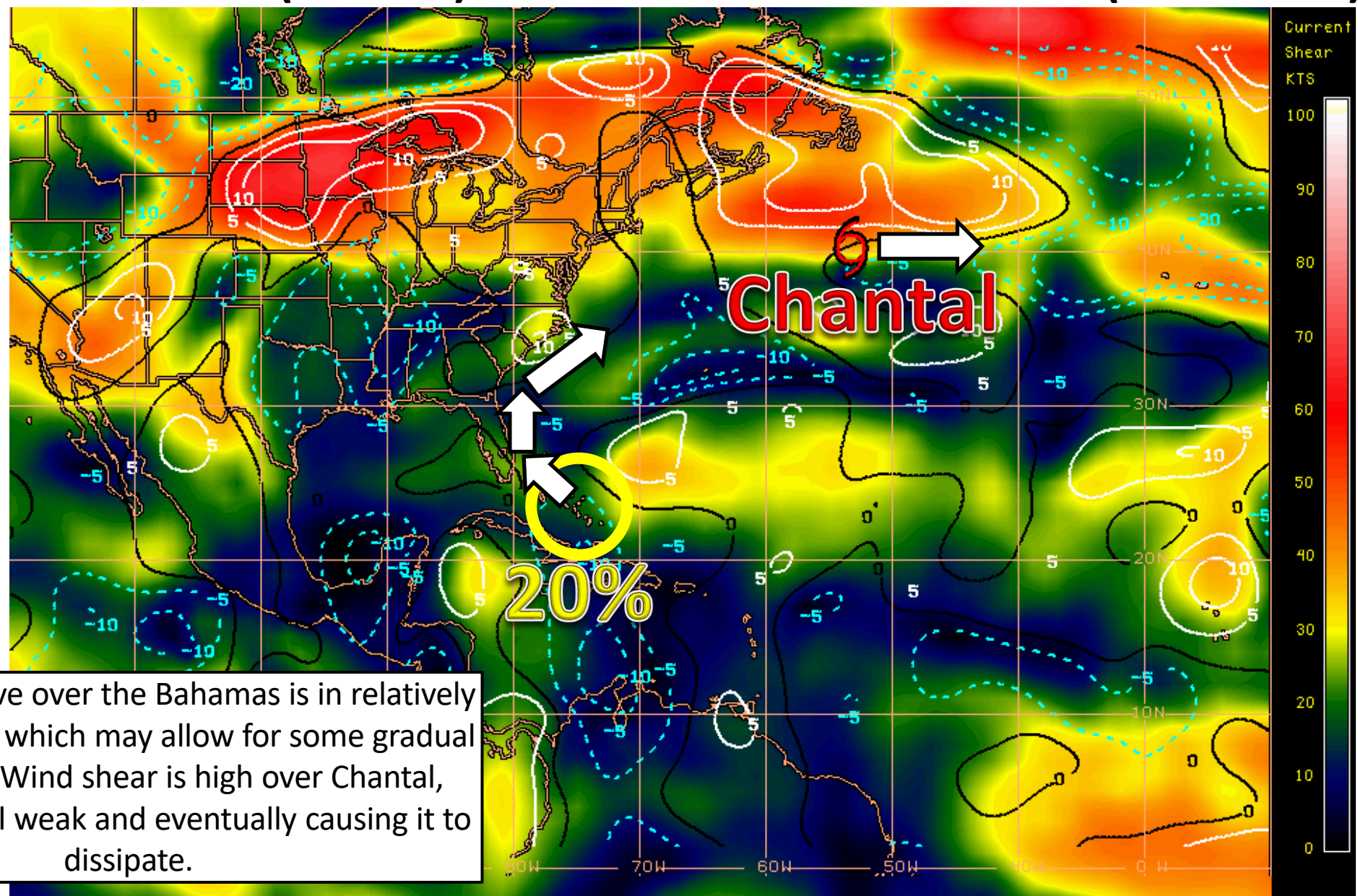




# Steering Currents



# Wind Shear (shaded) and Wind Shear Tendencies (contoured)

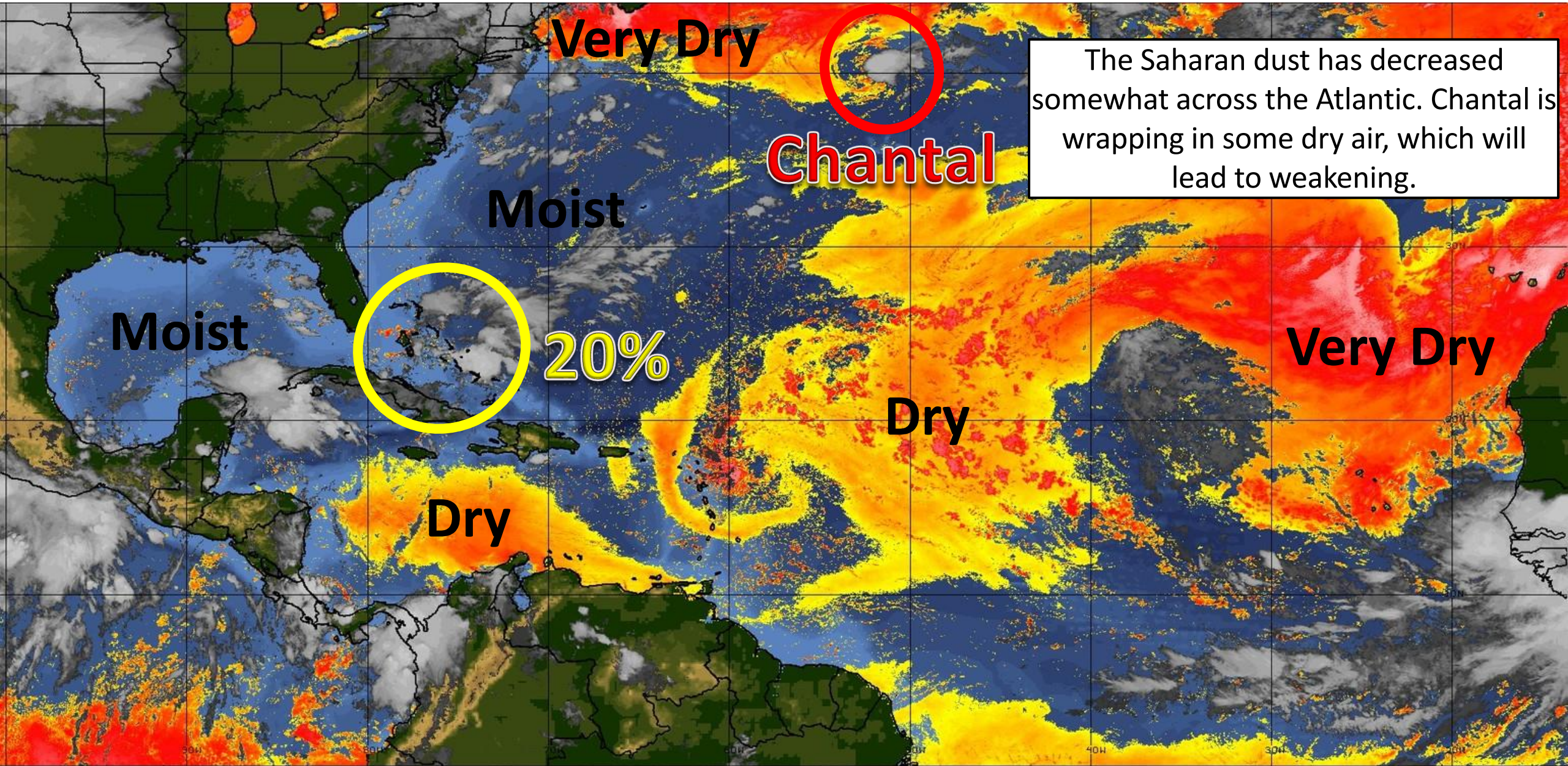


The tropical wave over the Bahamas is in relatively low wind shear, which may allow for some gradual organization. Wind shear is high over Chantal, keeping Chantal weak and eventually causing it to dissipate.

Shear Tendency (KTS) Over Past 24 Hours: Increasing — Decreasing ----



# Dry Air & Saharan Dust



The Saharan dust has decreased somewhat across the Atlantic. Chantal is wrapping in some dry air, which will lead to weakening.

LESS <----- DRY AIR (LOW/MID-LEVEL) AND/OR DUSTY SAL AIRMASS -----> MORE



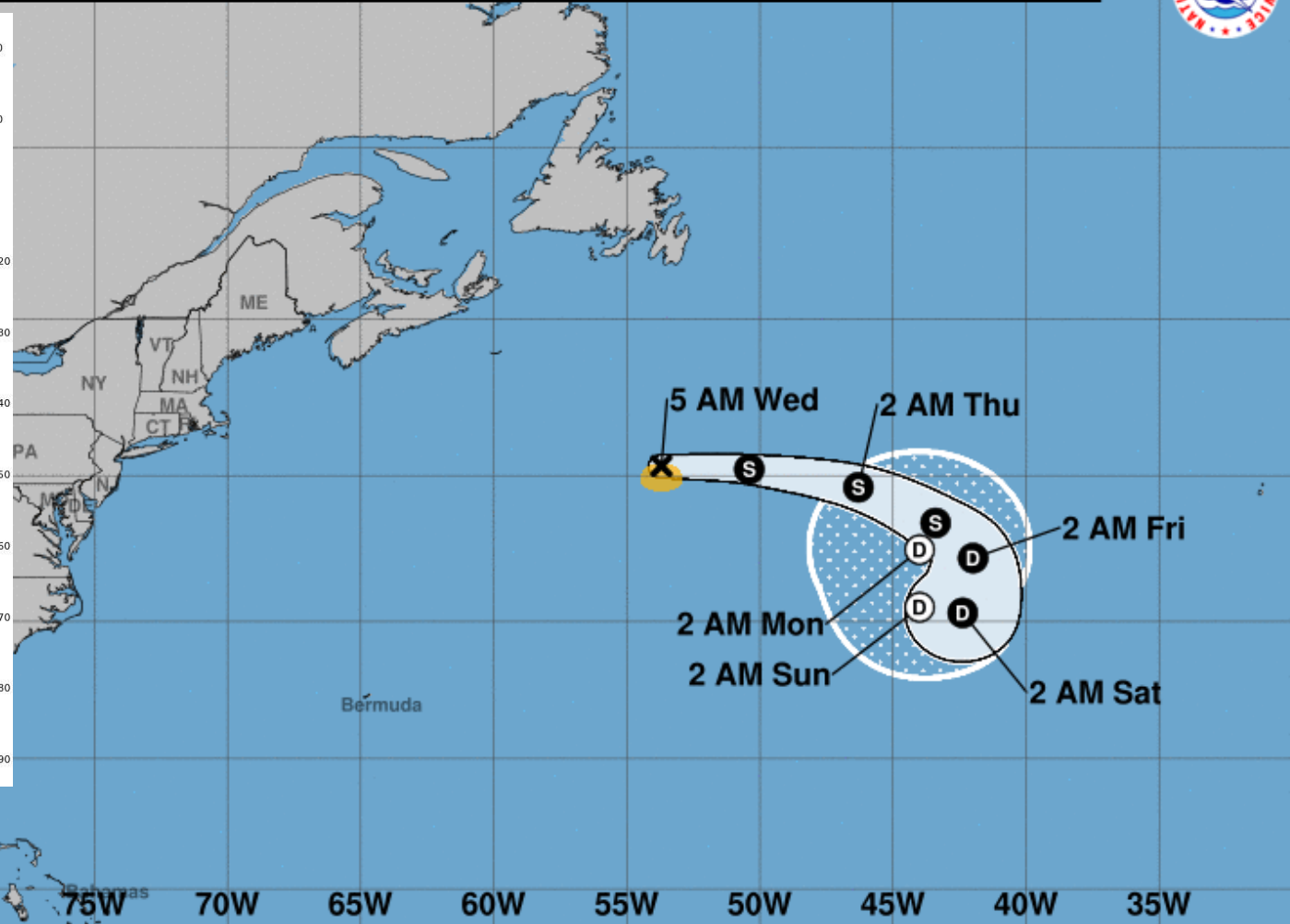
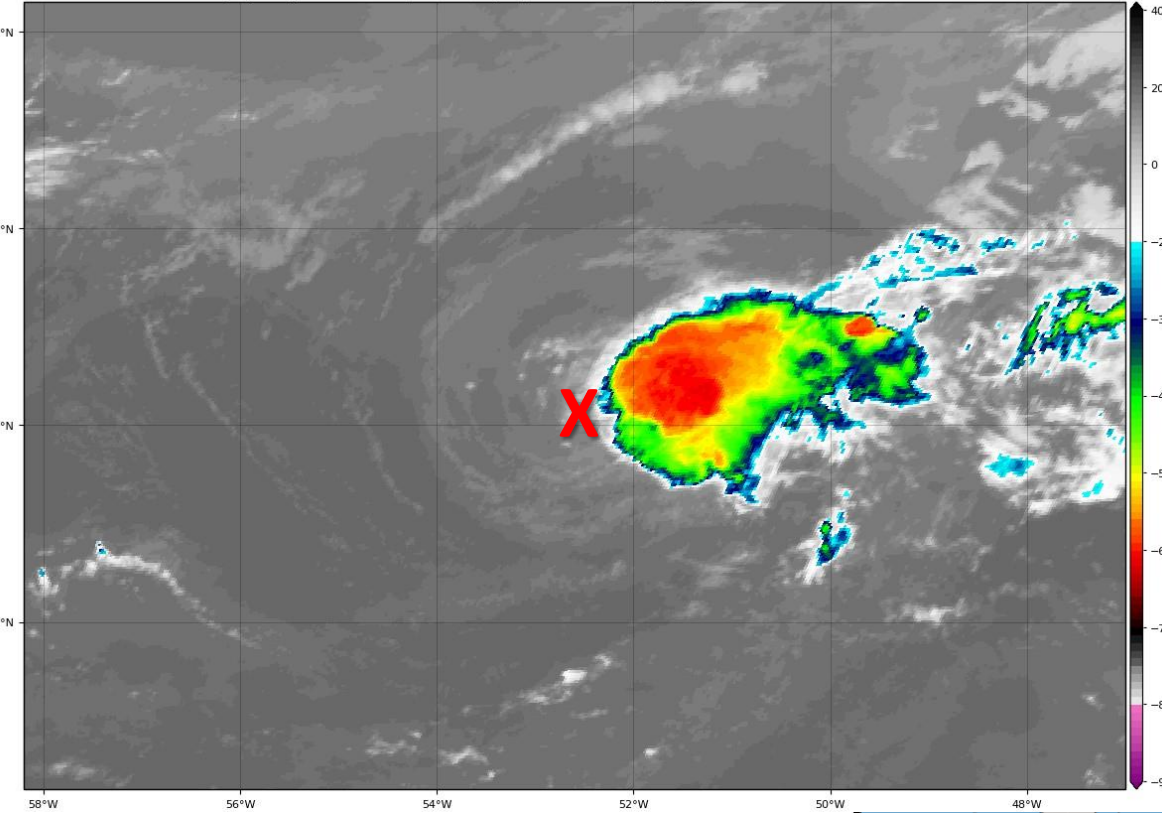


Note: The cone contains the probable path of the storm center but does not show the size of the storm. Hazardous conditions can occur outside of the cone.



TROPICALTIDBITS.COM

GOES-16 Channel 13 (IR) Brightness Temperature (°C) at 12:35Z Aug 21, 2019



Tropical Storm Chantal, located about 445 miles south of Cape Race, Newfoundland, is rapidly moving eastward across the far northern Atlantic. Maximum sustained winds are near 40 mph, and gradual weakening is expected as it moves through the far north Atlantic.

### Tropical Storm Chantal

Wednesday August 21, 2019  
5 AM AST Advisory 2  
NWS National Hurricane Center

### Current information: X

Center location 40.3 N 53.7 W  
Maximum sustained wind 40 mph  
Movement E at 22 mph

### Forecast positions:

● Tropical Cyclone ○ Post/Potential TC  
Sustained winds: D < 39 mph  
S 39-73 mph H 74-110 mph M > 110 mph

### Potential track area:

Day 1-3 Day 4-5

### Watches:

Hurricane Trop Stm

### Warnings:

Hurricane Trop Stm

### Current wind extent:

Hurricane Trop Stm



# Five-Day Graphical Tropical Weather Outlook

National Hurricane Center Miami, Florida



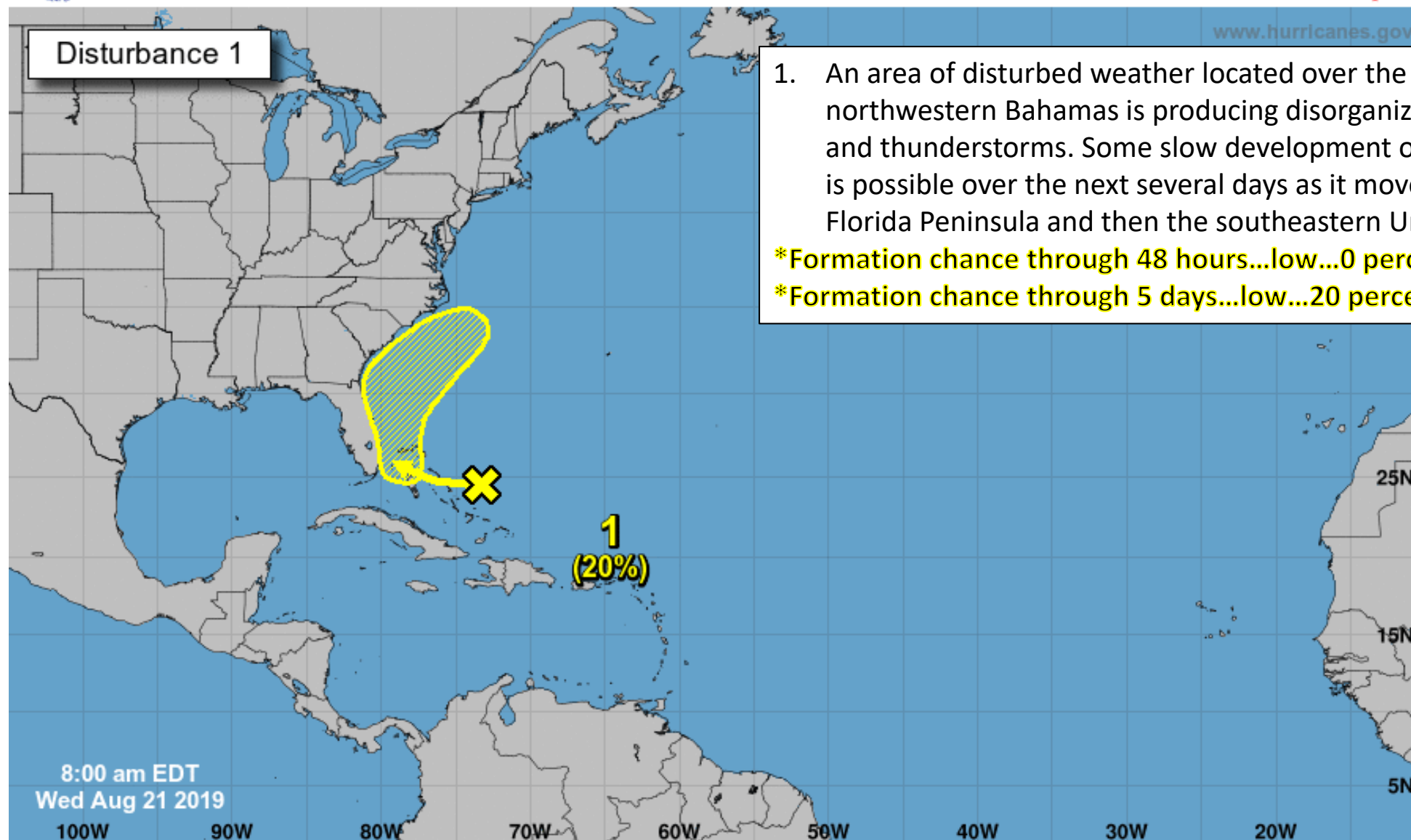
www.hurricanes.gov

Disturbance 1

1. An area of disturbed weather located over the central and northwestern Bahamas is producing disorganized showers and thunderstorms. Some slow development of this system is possible over the next several days as it moves toward the Florida Peninsula and then the southeastern United States.

\*Formation chance through 48 hours...low...0 percent.

\*Formation chance through 5 days...low...20 percent.



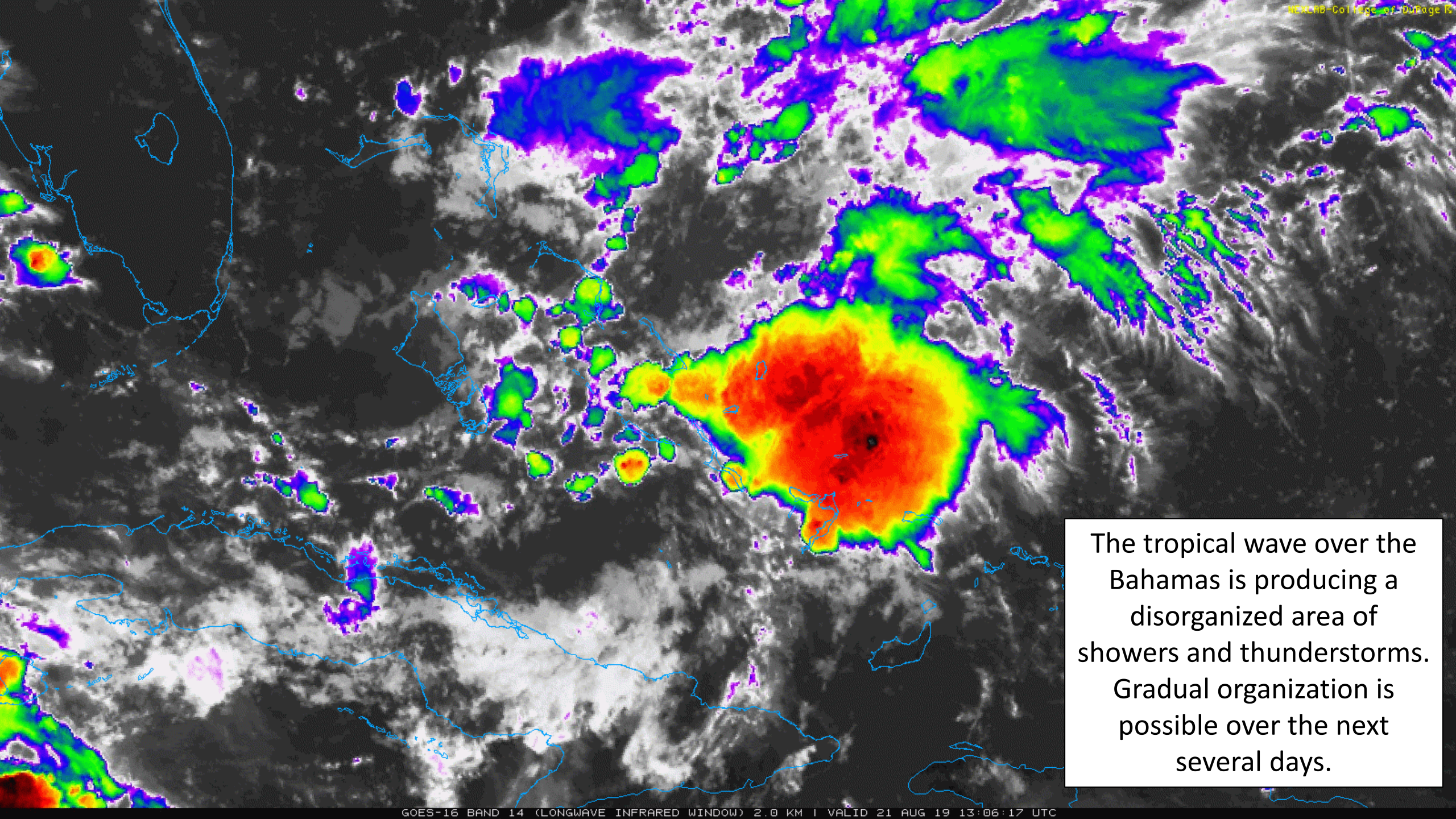
8:00 am EDT  
Wed Aug 21 2019

Current Disturbances and Five-Day Cyclone Formation Chance:    < 40%    40-60%    > 60%

Tropical or Sub-Tropical Cyclone:    Depression    Storm    Hurricane

Post-Tropical Cyclone or Remnants

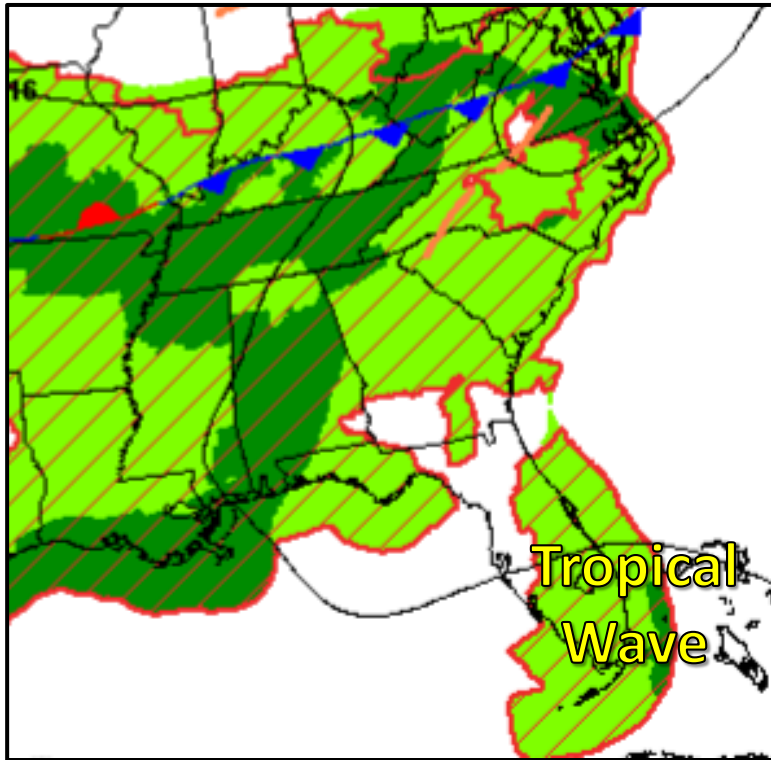




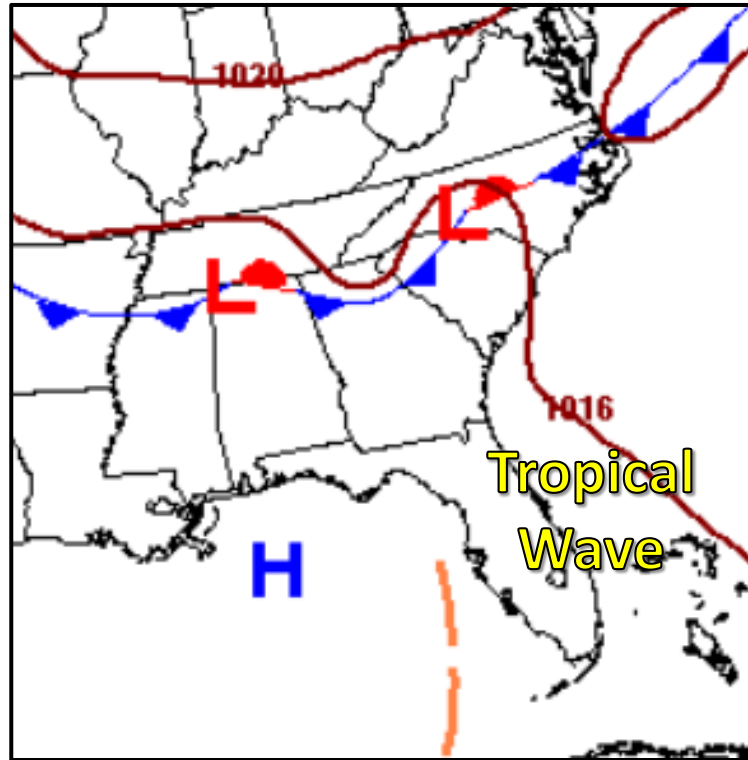
The tropical wave over the Bahamas is producing a disorganized area of showers and thunderstorms. Gradual organization is possible over the next several days.



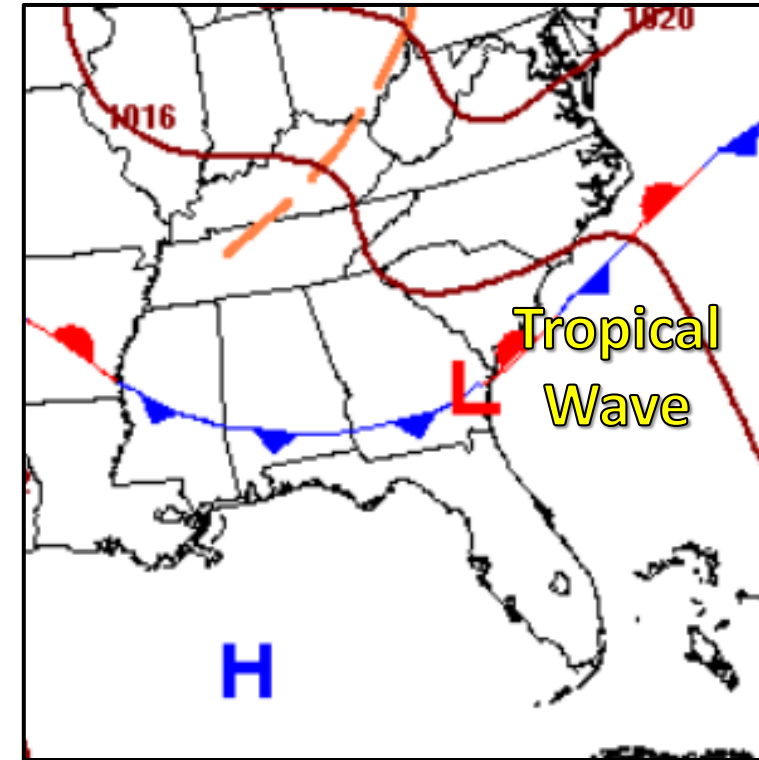
# Forecast Weather Maps with Fronts



**Friday**



**Saturday**



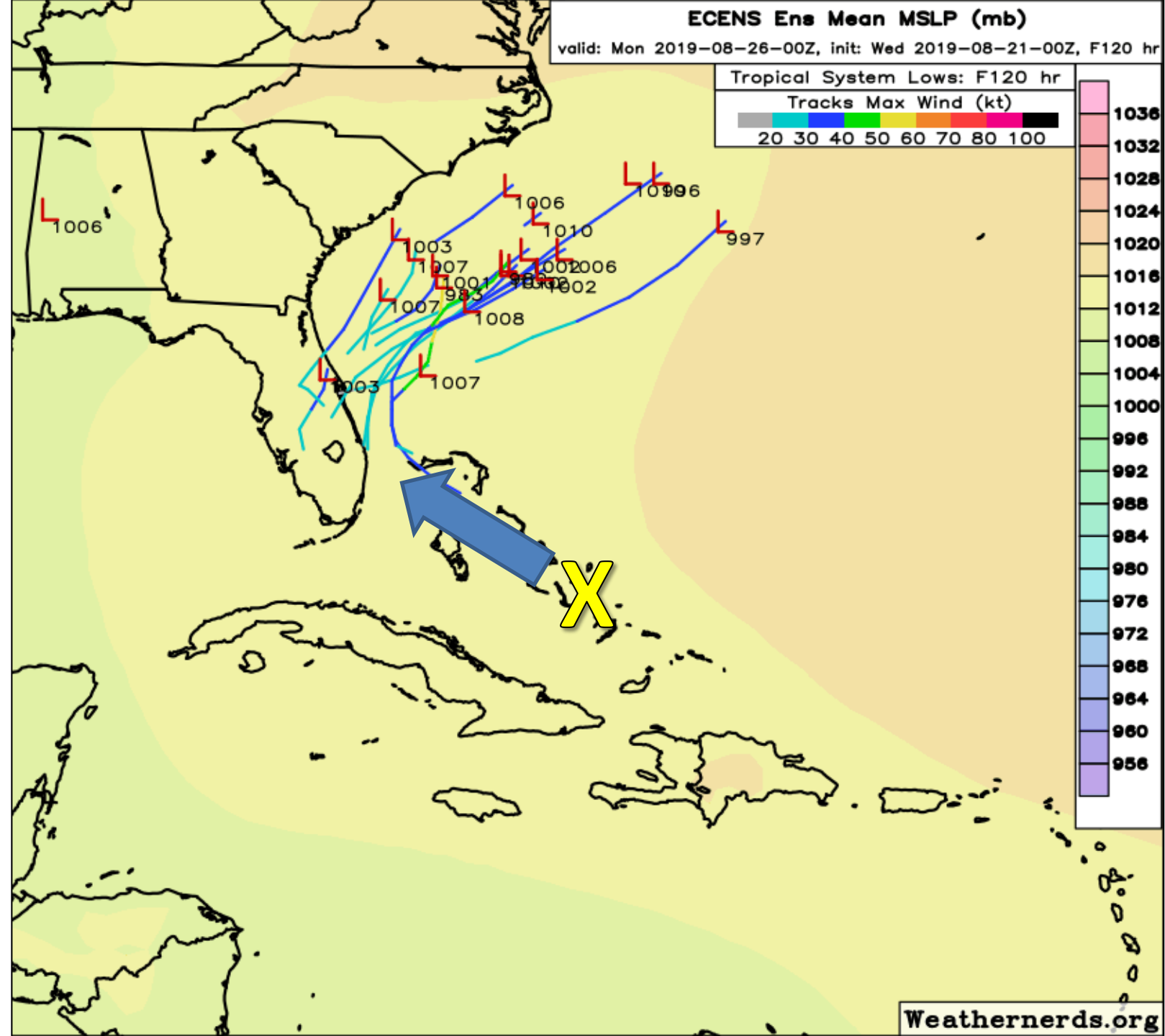
**Sunday**

A cold front will sink down across the Southeast U.S. and turn the tropical wave northeastward away from the U.S. East Coast over the weekend. Enhanced rain chances are expected from the tropical wave.



# Potential Model Forecast Tracks Next 5 Days

The current models have the system generally remaining weak, if it develops at all. The system will move toward the East Coast of Florida before recurving northeastward off the Southeast U.S. Coast ahead of the cold front. This is where the better chance of development will be, if any occurs.

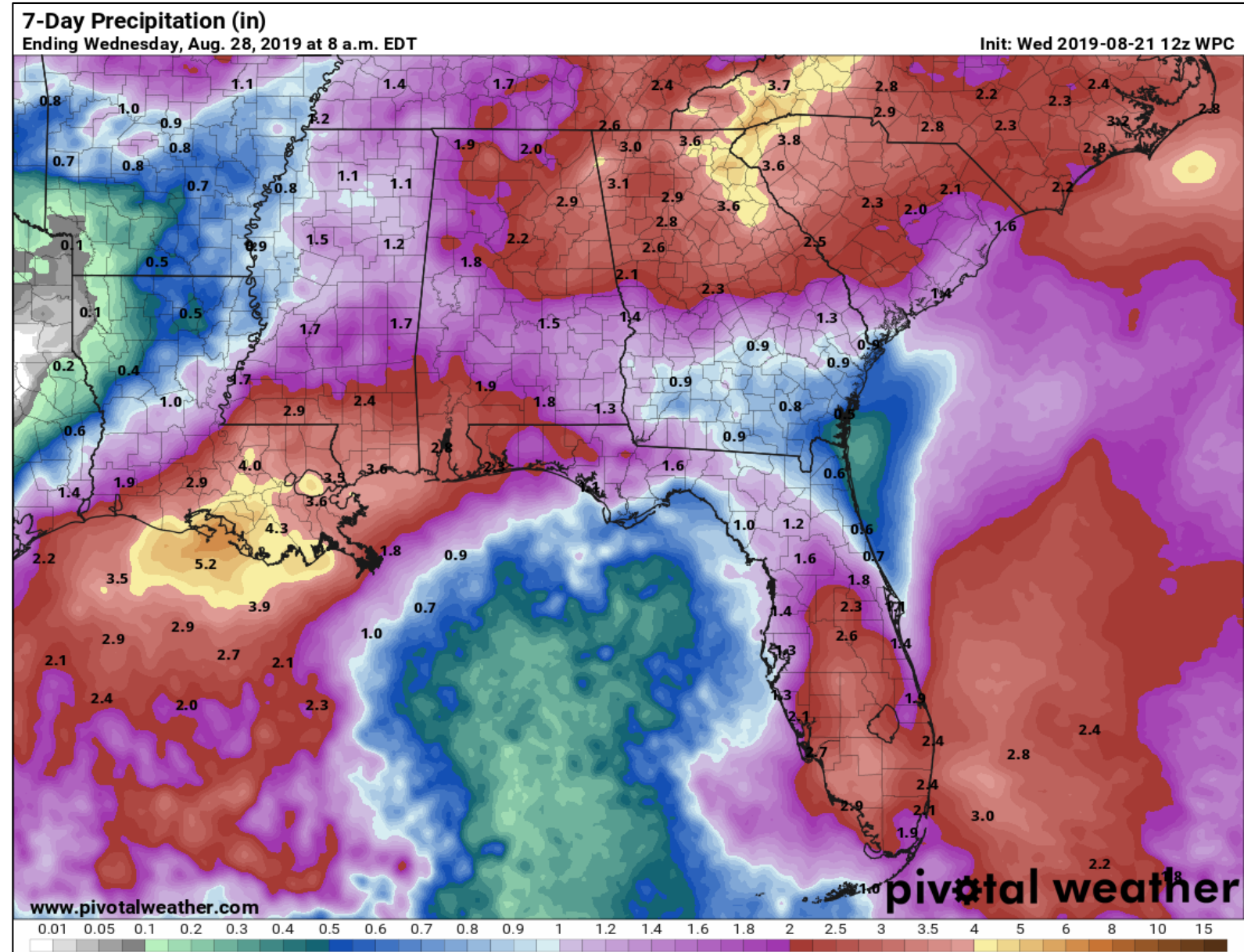




# Rainfall Totals Next 7 Days

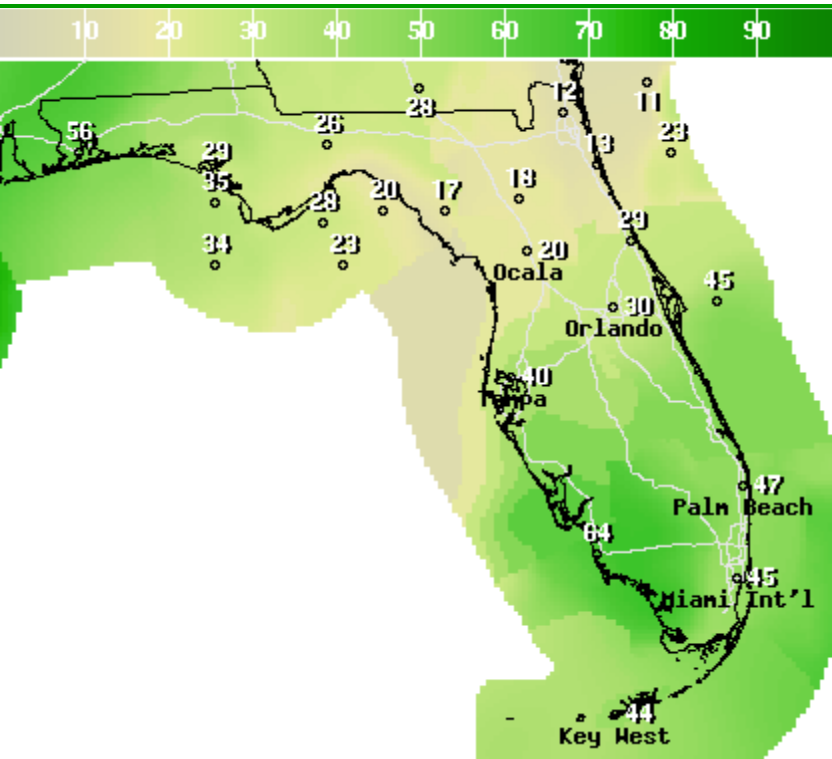
If the wave gets close enough to the East Coast of Florida, some locally heavier rainfall may occur. However, these forecast rain totals also account for typical afternoon thunderstorms. If heavier rainfall occurs, localized flooding may be possible given saturated soils from recent heavy rain events.

Regardless of development, increased rain chances are expected this weekend along the East Coast.

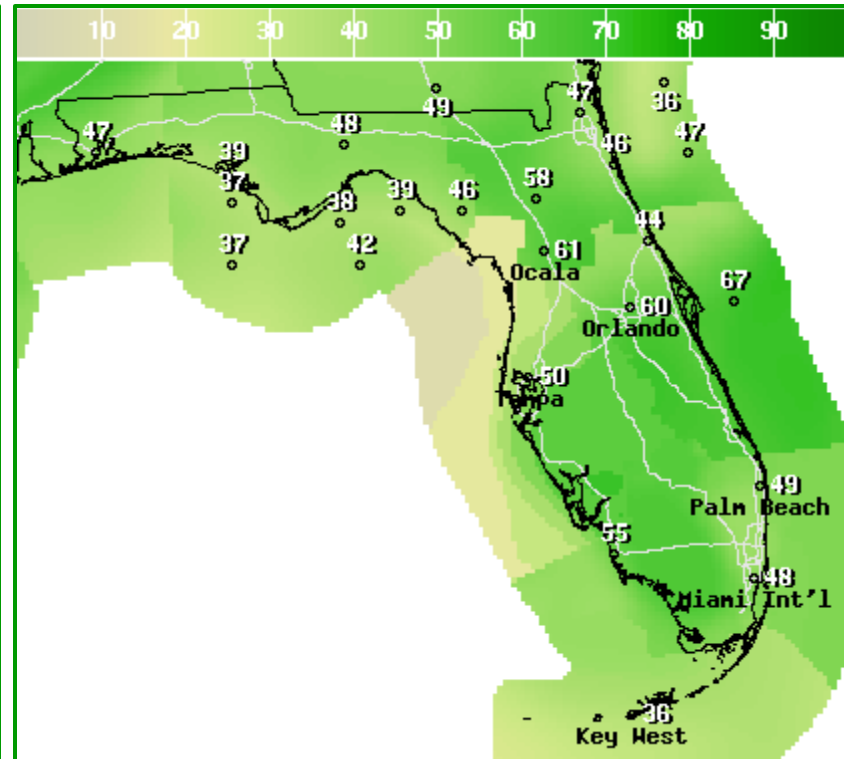




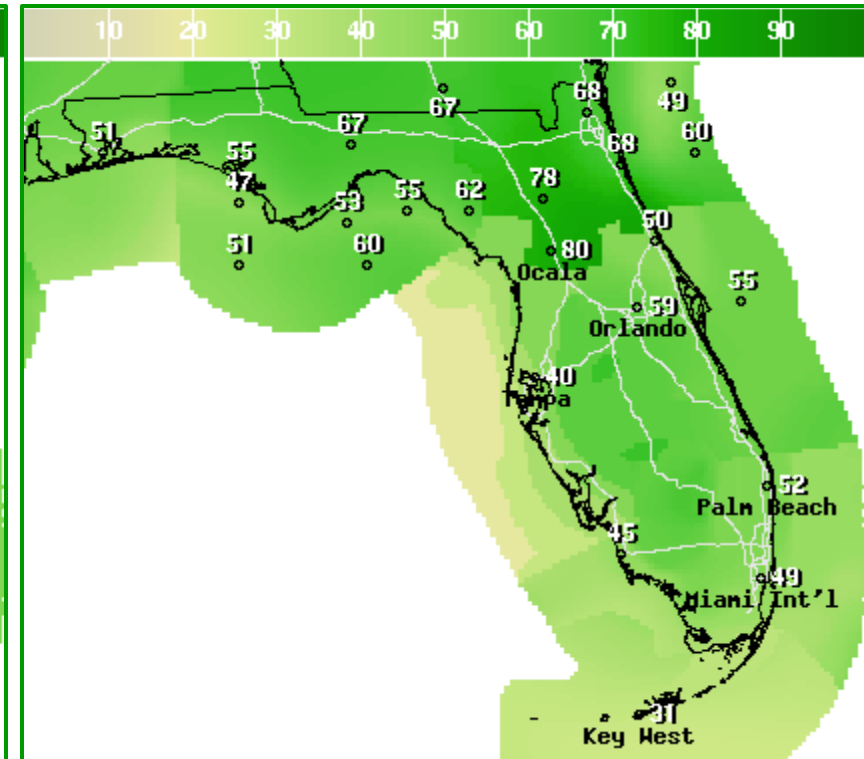
# Rain Chances Through the Weekend



**Friday**



**Saturday**



**Sunday**

Rain chances will increase in South Florida on Friday as the tropical wave approaches, then along a majority of the Peninsula over the weekend as the tropical wave turns northward and a cold front approaches from the north.



# Summary

## **Tropical Storm Chantal**

- The small low pressure area in the far northern Atlantic organized yesterday afternoon and evening. At 11 PM ET Tuesday, advisories began on Tropical Storm Chantal (shahn-TAHL).
- Tropical Storm Chantal is located about 450 miles south of Newfoundland and moving to the east at 22 mph. Maximum sustained winds are at 40 mph.
- Chantal will maintain strength over the next couple of days before dissipating over the open waters of the North Atlantic.

## **Bahama Tropical Wave**

- A tropical wave over the central and northwestern Bahamas is producing disorganized showers and thunderstorms.
- Some slow development of this system is possible later this week as it moves northwest and then north off the coast of the Southeast.
- The National Hurricane Center gives this disturbance a near 0% (low) chance of development over the next 48 hours and a 20% (low) chance over the next 5 days.

## **Florida Outlook:**

- Tropical Storm Chantal poses no threat to Florida or the United States.
- Seasonable rain chances and temperatures continue across the state through Thursday.
- This weekend, the combination of an approaching cold front and an increase in tropical moisture, rain chances will be high statewide.
- Any other details on the tropical wave in the Bahamas are uncertain. At this time, significant development of this system close to Florida is not expected. However, this tropical wave should be monitored, especially given the recent heavy rainfall in parts of the state.
- Due to recent rainfall, several Big Bend and West Coast rivers remain in minor flood stage, but have generally crested and are falling.

The next tropics packet will be issued Thursday morning. For the latest information on the tropics, please visit the National Hurricane Center website at [www.hurricanes.gov](http://www.hurricanes.gov). For the latest flood updates, see the latest products from your local National Weather Service, the [Southeast River Forecast Center](#), and the [Weather Prediction Center](#).





# TROPICAL UPDATE



Created by:

Michael Spagnolo, Deputy State Meteorologist

[Michael.Spagnolo@em.myflorida.com](mailto:Michael.Spagnolo@em.myflorida.com)

Cameron Young, Assistant State Meteorologist

[Cameron.Young@em.myflorida.com](mailto:Cameron.Young@em.myflorida.com)

State Meteorological Support Unit

Florida Division of Emergency Management

Users wishing to subscribe (approval pending) to this distribution list, register at [https://public.govdelivery.com/accounts/FLDEM/subscriber/new?topic\\_id=SERT\\_Met\\_Tropics](https://public.govdelivery.com/accounts/FLDEM/subscriber/new?topic_id=SERT_Met_Tropics).

Other reports available for subscription are available at <https://public.govdelivery.com/accounts/FLDEM/subscriber/new?preferences=true>