



TROPICAL UPDATE



9 AM EDT

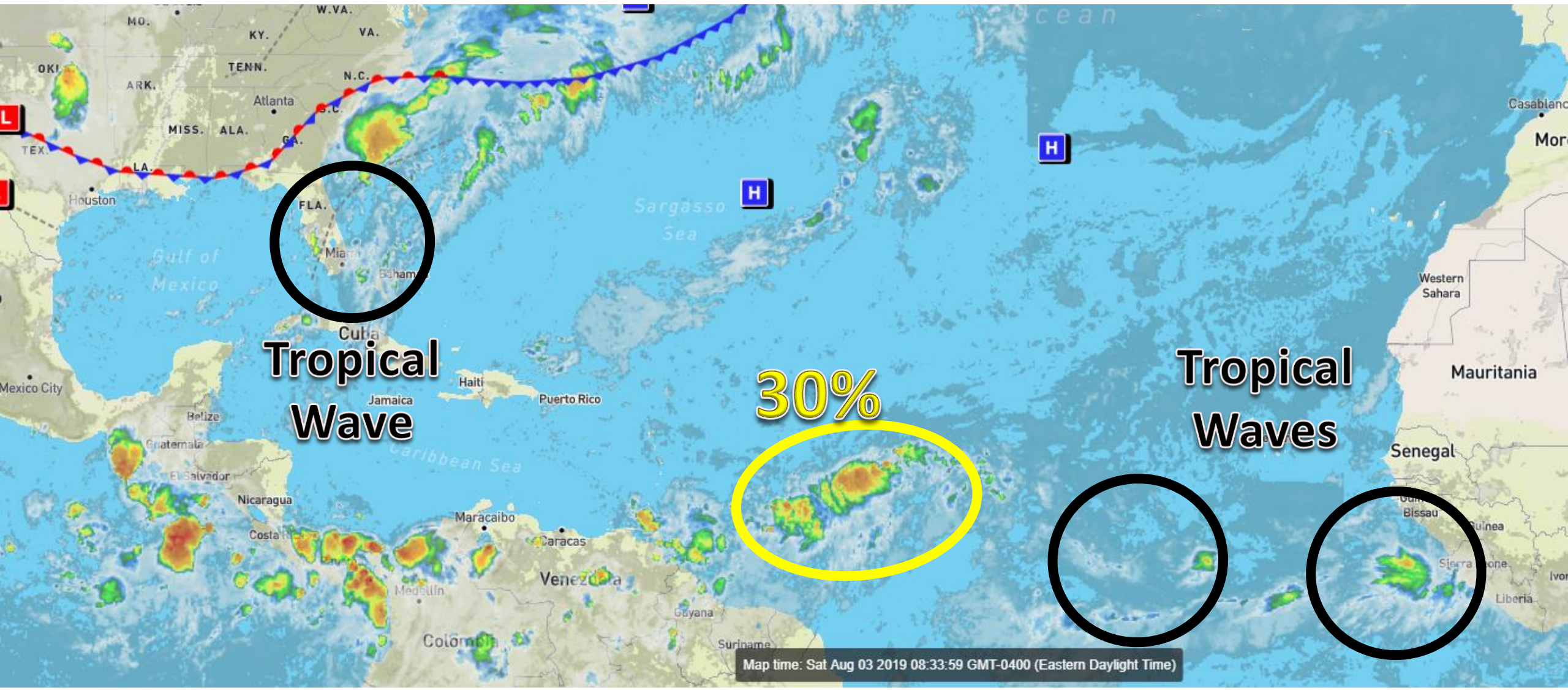
Saturday, August 3, 2019

Invest 96L (30%), Tropical Wave Over
Florida (0%)

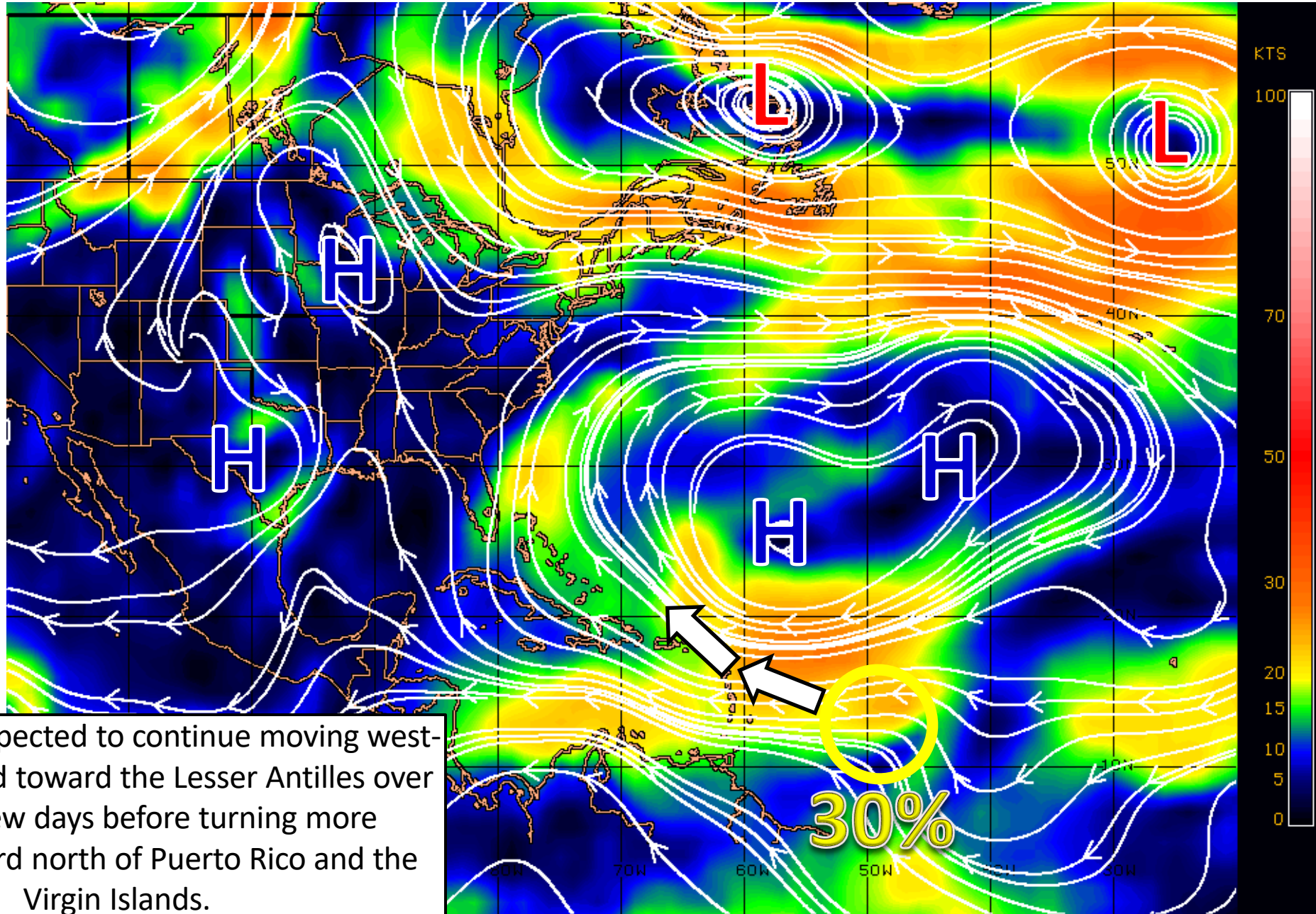
This update is intended for government and emergency response officials, and is provided for informational and situational awareness purposes only. Forecast conditions are subject to change based on a variety of environmental factors. For additional information, or for any life safety concerns with an active weather event please contact your County Emergency Management or Public Safety Office, local National Weather Service forecast office, or visit the National Hurricane Center website at www.hurricanes.gov.

Atlantic Basin Satellite Image

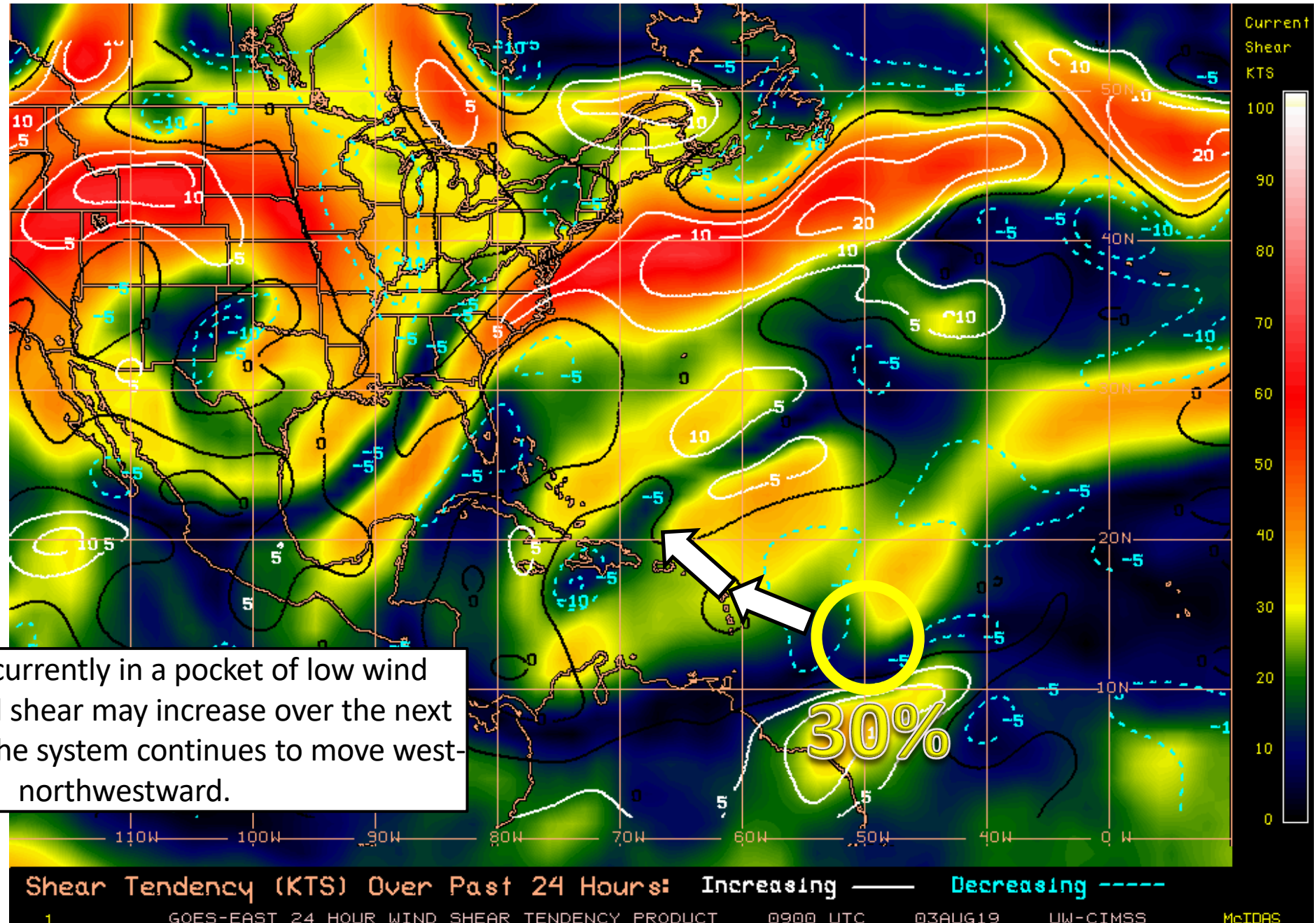
Chance of development: — None — Low — Medium — High



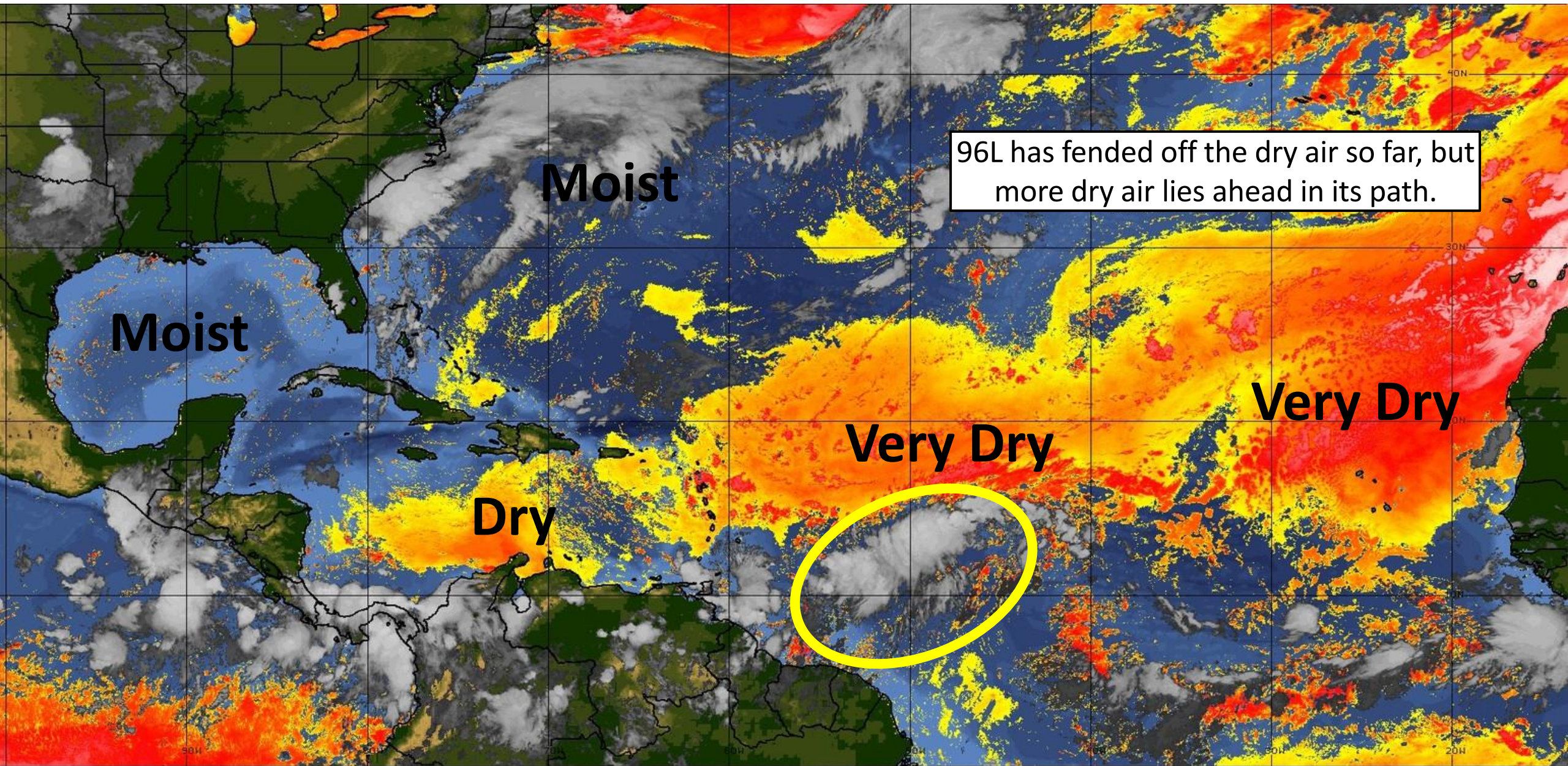
Steering Currents



Wind Shear (shaded) and Wind Shear Tendencies (contoured)



Dry Air & Saharan Dust



96L has fended off the dry air so far, but more dry air lies ahead in its path.

Moist

Moist

Very Dry

Very Dry

Dry

LESS <----- DRY AIR (LOW/MID-LEVEL) AND/OR DUSTY SAL AIRMASS -----> MORE



Five-Day Graphical Tropical Weather Outlook

National Hurricane Center Miami, Florida



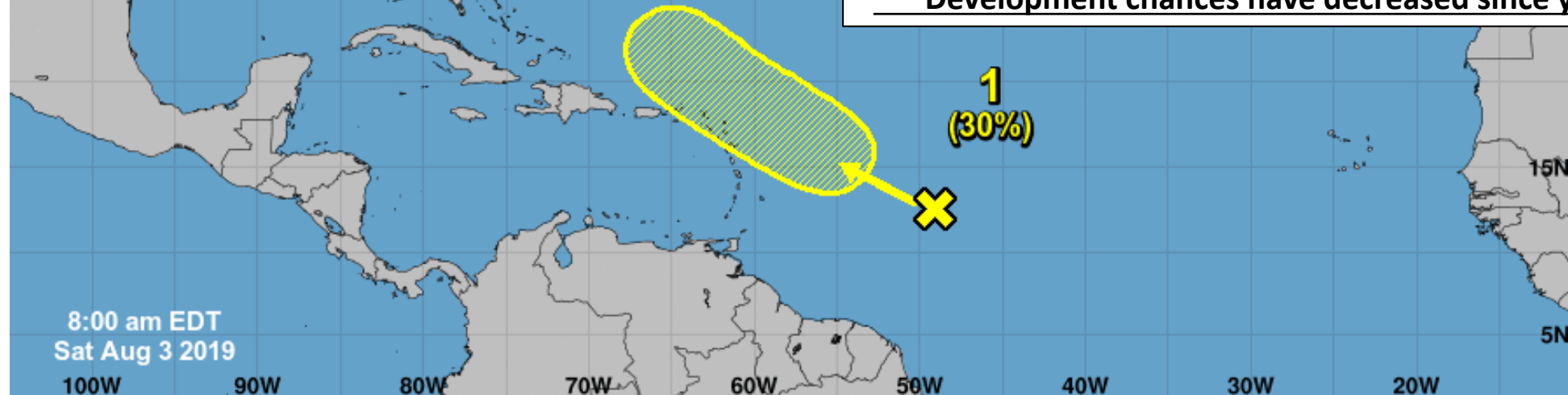
Disturbance 1

An elongated area of low pressure located several hundred miles east-southeast of the Lesser Antilles is producing a large but disorganized area of showers and thunderstorms. Only gradual development of this system is expected for the next few days while it moves west-northwestward across the northern Lesser Antilles. Subsequently, some slight additional development is possible by the middle of next week while the disturbance moves northwestward, north of Puerto Rico and the Virgin Islands.

***Formation chance through 48 hours...low...near 20 percent.**

***Formation chance through 5 days...low...near 30 percent.**

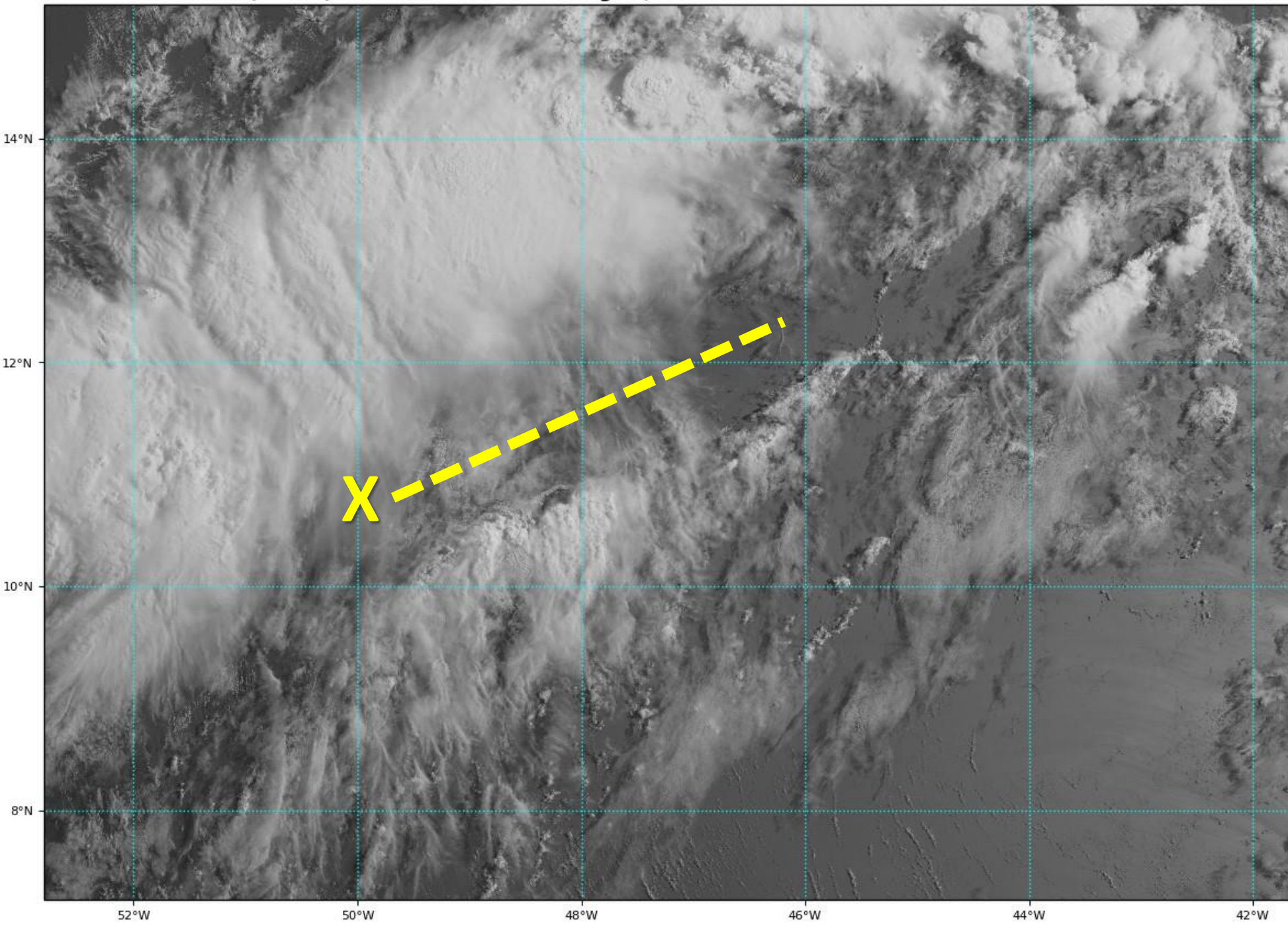
*****Development chances have decreased since yesterday.*****



Current Disturbances and Five-Day Cyclone Formation Chance: < 40% 40-60% > 60%

Tropical or Sub-Tropical Cyclone: Depression Storm Hurricane

Post-Tropical Cyclone or Remnants



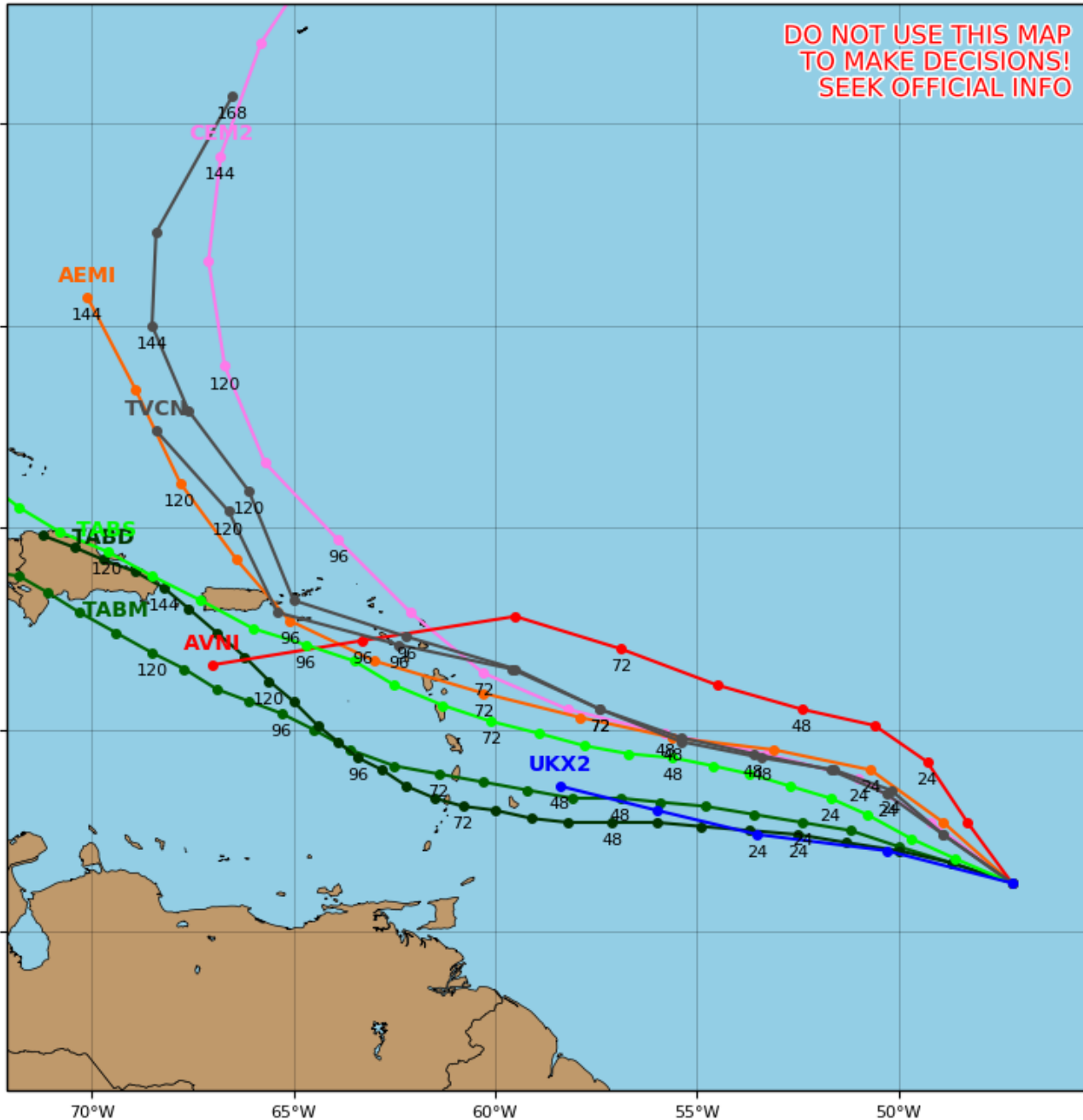
Current Visible Satellite – Invest 96L

While convection has increased since yesterday, the center of 96L remains ill-defined (yellow X) and is elongated off to the east-northeast (yellow dashed line).

Invest 96L Model Track Guidance

Initialized at 00z Aug 03 2019

Levi Cowan - tropicaltidbits.com



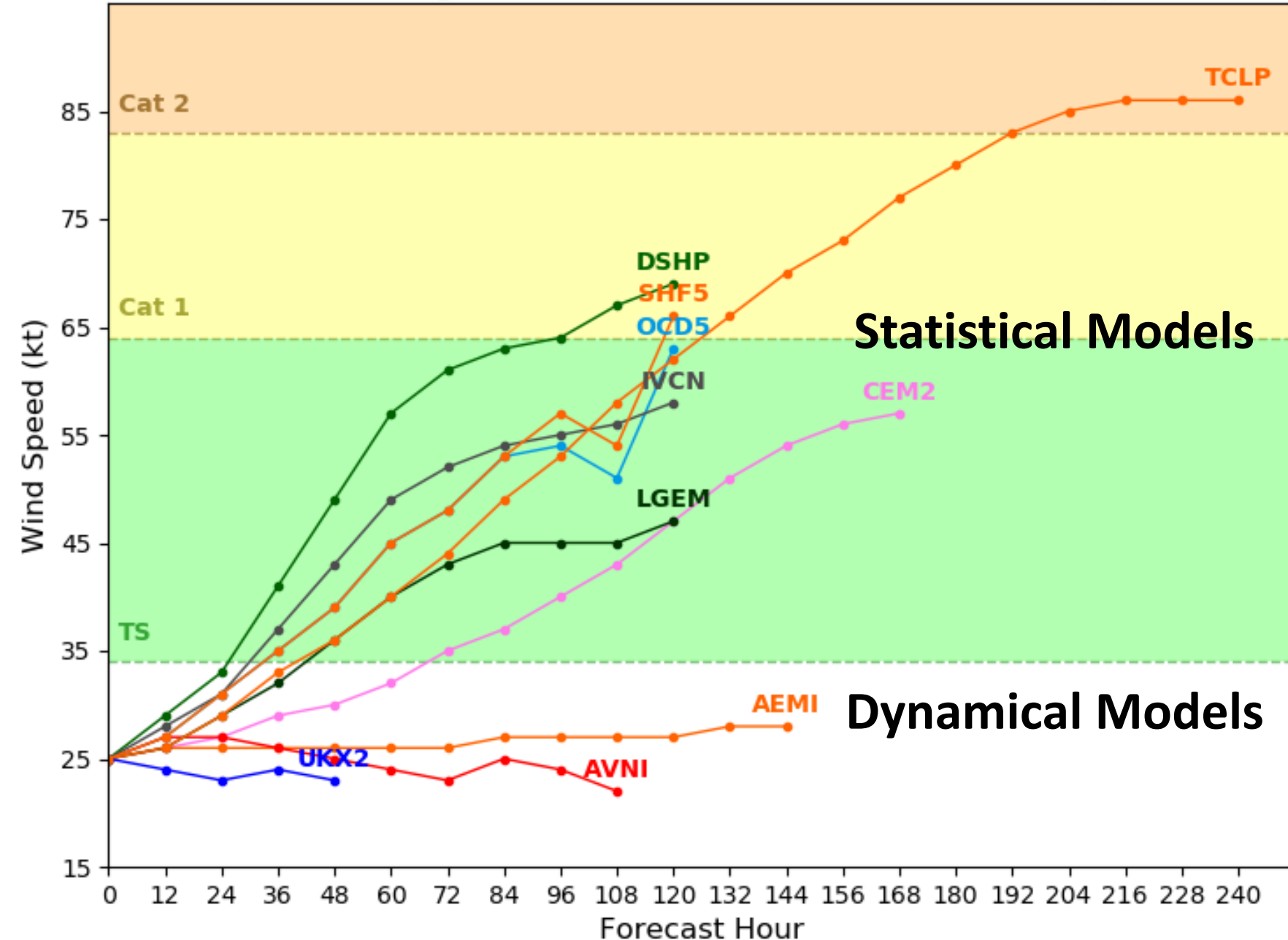
Current Model Track Guidance for Invest 96L

Model guidance is generally in agreement with 96L moving to the west-northwest over the next several days. 96L should reach the Lesser Antilles in about 3 days and be near Puerto Rico and the Virgin Islands in about 4 days. Several reliable models then turn 96L off to the northwest or north after passing near Puerto Rico..

Invest 96L Model Intensity Guidance

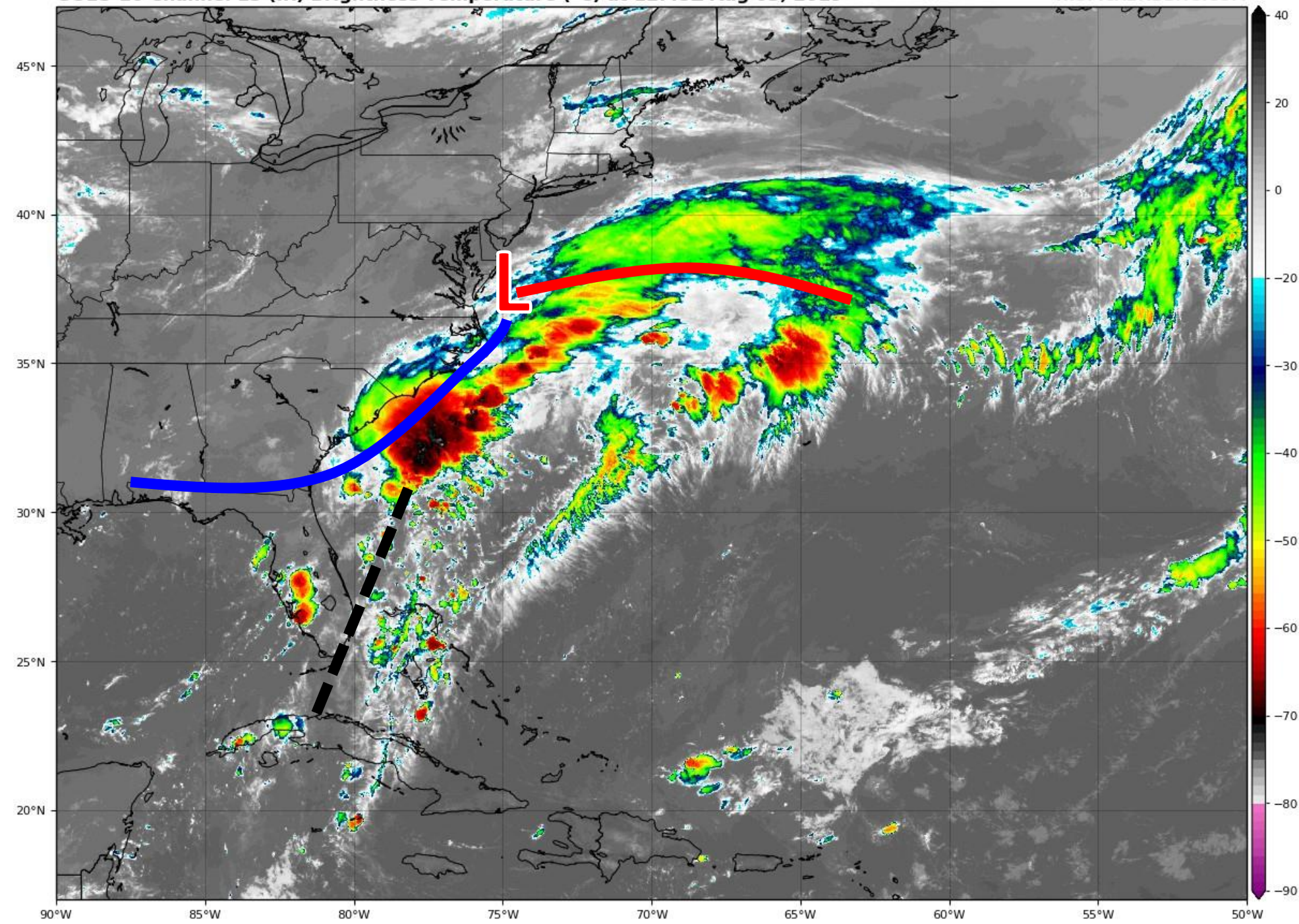
Initialized at 00z Aug 03 2019

Levi Cowan - tropicaltidbits.com



Current Model Intensity Guidance for Invest 96L

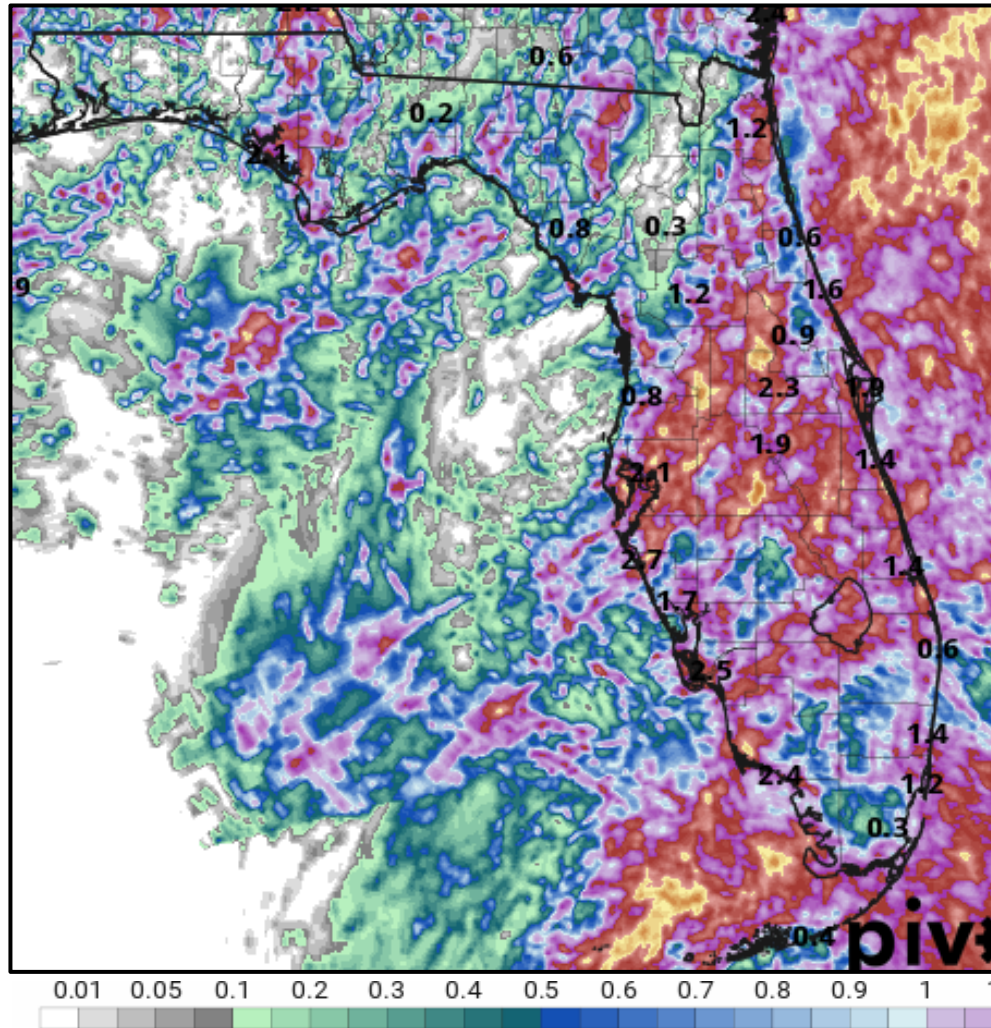
Statistical models (which don't account for the current state of the atmosphere) are the only models that show strengthening of any significance. Dynamical models keep the system weak.



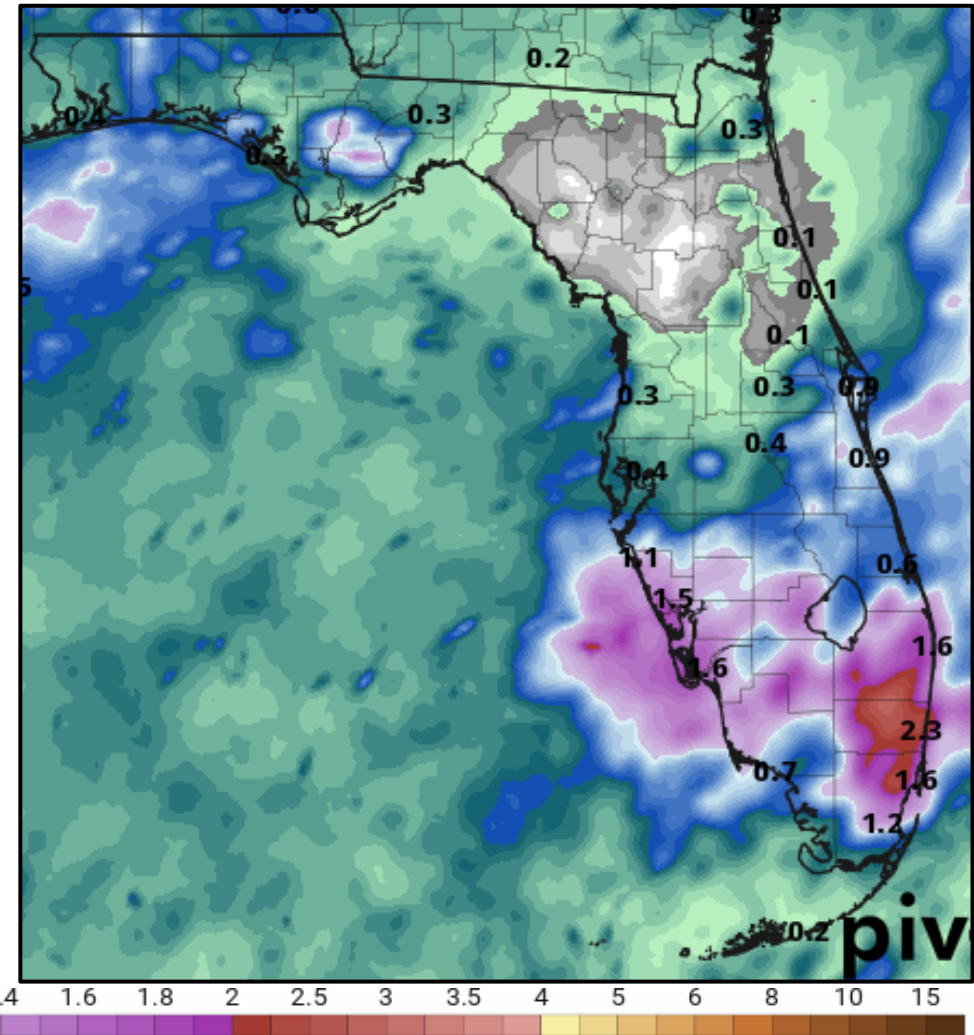
Current Visible Satellite – Tropical Wave over Florida

The axis of the tropical wave (black dashed line) is expected to merge with the cold front (blue line) to its north over the next 24 hours. Scattered to numerous showers and thunderstorms are expected across the Peninsula.

Estimated Rainfall Totals Last 3 Days

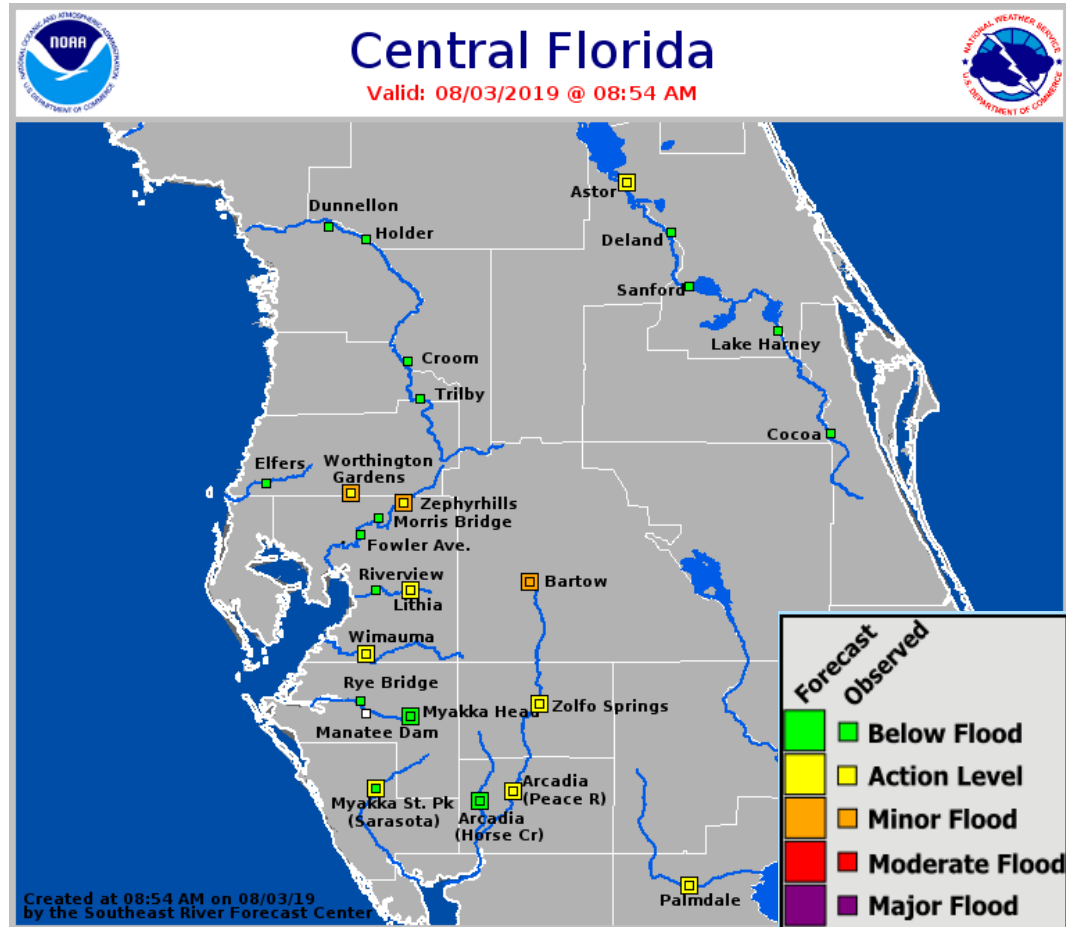


Cumulative Rainfall Totals Next 3 Days

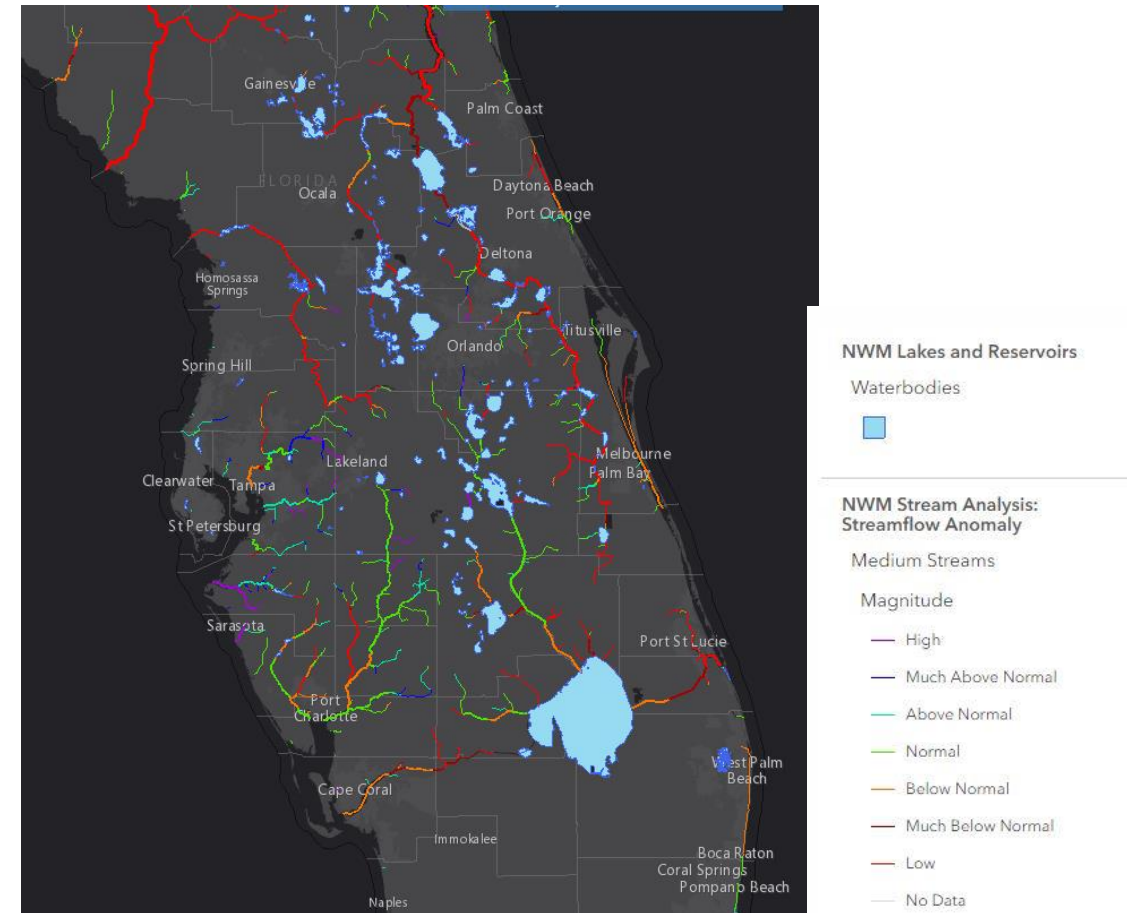


About 1-3" of rain has fallen across much of the Peninsula over the last week or so with localized totals up to 5". Over the next 3 days, another 1-3" of rain widespread is expected, mainly in South Florida. However, localized totals of 3-5" cannot be ruled out where the heavier storms set up..

Current/Forecast River Stages



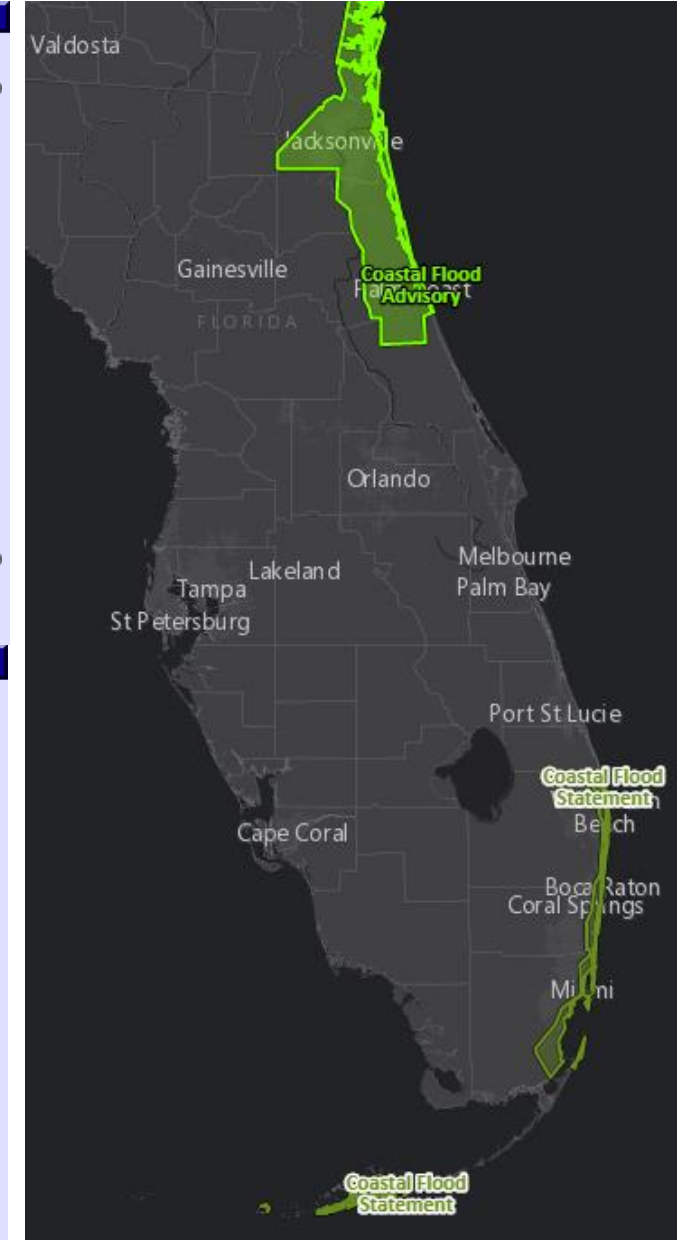
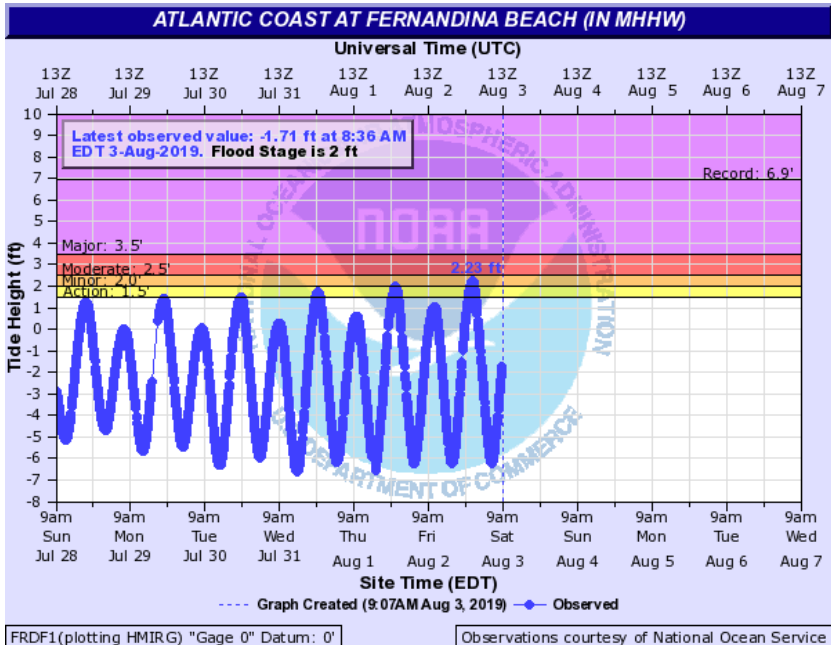
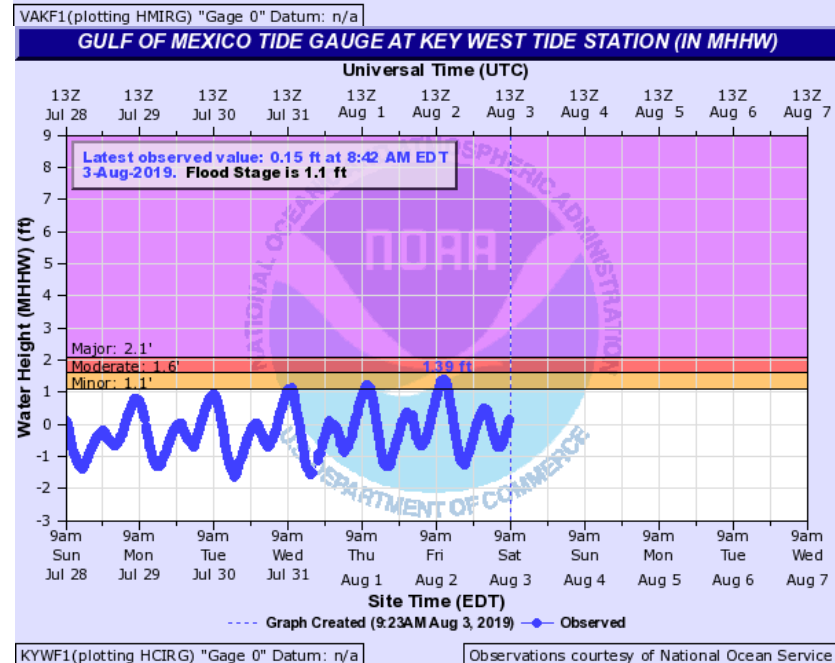
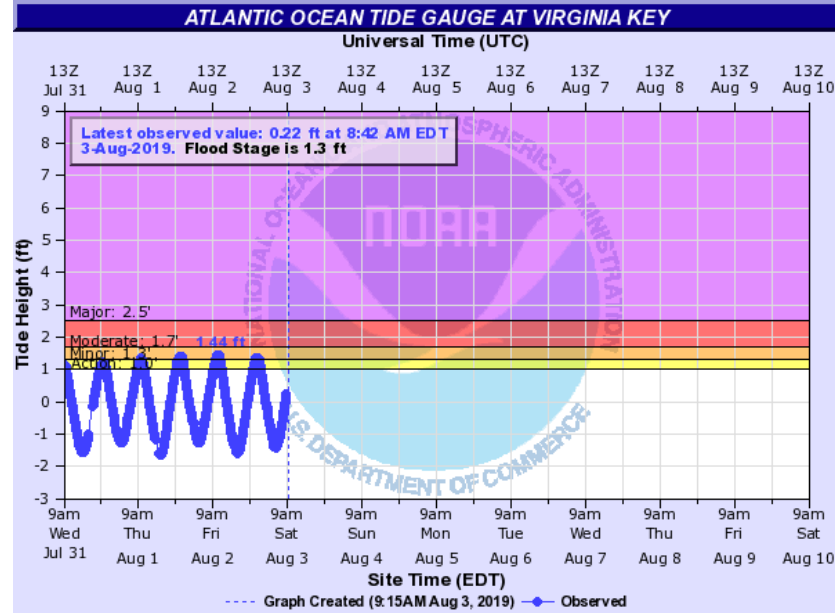
Current Streamflow Anomalies



River Flood Warnings are in effect for the Cypress Creek at Worthington Gardens, Hillsborough River near Zephyrhills, and Peace River at Bartow. Additional rivers are in action stage across West Central Florida. Minor flooding may become possible along additional rivers should heavier rainfall occur. It will take about 2-3" over the next 3 days to cause minor flooding along the many West Central Rivers.

Coastal Flood Advisories & Statements

Minor coastal flooding is possible along parts of the East Coast and in the lower Florida Keys near high tide this morning. This is due to the combination of the new moon, king tides, and the tropical wave bringing onshore winds. Tides will run about 1-2' above normal today.



Summary

Invest 96L/Eastern Atlantic Wave

- Invest 96L is located several hundred miles east-southeast of the Lesser Antilles, moving west-northwest at 10-15 mph.
- Somewhat unfavorable upper-level winds and nearby dry air will only allow for slight development over the next couple days.
- Conditions may allow for additional slight development when the system moves north of Puerto Rico and the Virgin Islands by the middle of next week.
- The National Hurricane Center gives this system a 20% (low) chance of development in the next 48 hours and a 30% (low) chance days 3-5.

Tropical Wave Over Florida

- Development is not expected, though enhanced rain chances are expected this weekend across the Florida Peninsula.

Florida Outlook:

- Rain chances remain high across the Peninsula over the next few days with locally heavy rainfall possible.
- Widespread cumulative rainfall totals of 1-3" are forecast over the next 3 days, with localized totals of 3-5" which may result in some isolated flash flooding through the weekend.
- Gusty winds and isolated waterspouts or funnel clouds may be possible in the stronger storms.
- Due to the king tides, new moon, and onshore flow, tides are running 1-2' above normal. This may result in minor coastal flooding, especially if heavy rainfall occurs near high tide.
- Due to recent rainfall, some West-Central Florida rivers are in minor flood stage. Additional rainfall totals over 2-3" will result in additional minor river flooding.
- Invest 96L poses no threat to Florida for at least the next 7 days, but should continue to be monitored.

The next update (either packet or email) will be issued Sunday morning. For the latest information on the tropics, please visit the National Hurricane Center website at www.hurricanes.gov.



TROPICAL UPDATE



Created by:

Cameron Young, Assistant State Meteorologist

Cameron.Young@em.myflorida.com

State Meteorological Support Unit

Florida Division of Emergency Management

Users wishing to subscribe (approval pending) to this distribution list, register at https://public.govdelivery.com/accounts/FLDEM/subscriber/new?topic_id=SERT_Met_Tropics. Other reports available for subscription are available at <https://public.govdelivery.com/accounts/FLDEM/subscriber/new?preferences=true>