



TROPICAL UPDATE



9 AM EDT

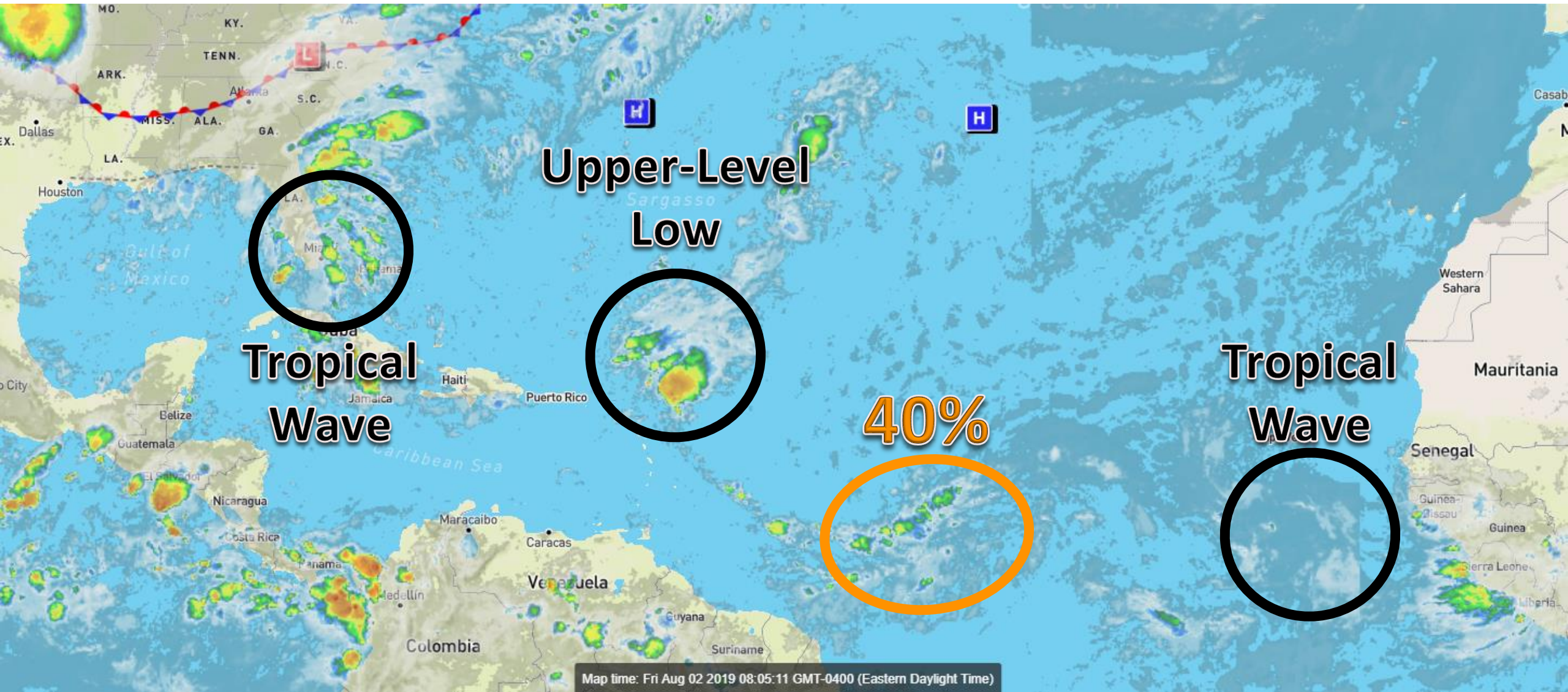
Friday, August 2, 2019

Invest 96L (40%), Tropical Wave Near
Florida (0%)

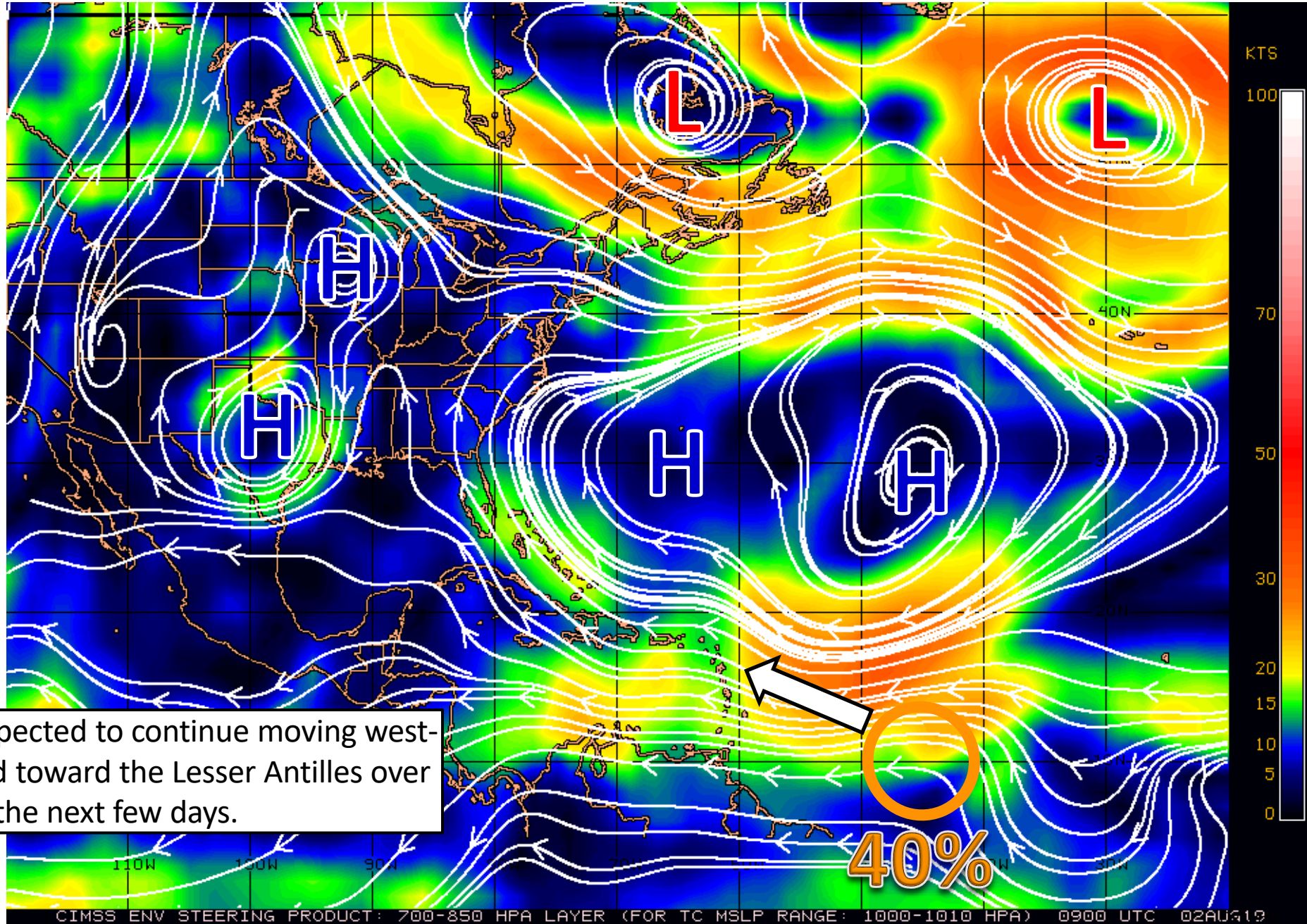
This update is intended for government and emergency response officials, and is provided for informational and situational awareness purposes only. Forecast conditions are subject to change based on a variety of environmental factors. For additional information, or for any life safety concerns with an active weather event please contact your County Emergency Management or Public Safety Office, local National Weather Service forecast office, or visit the National Hurricane Center website at www.hurricanes.gov.

Atlantic Basin Satellite Image

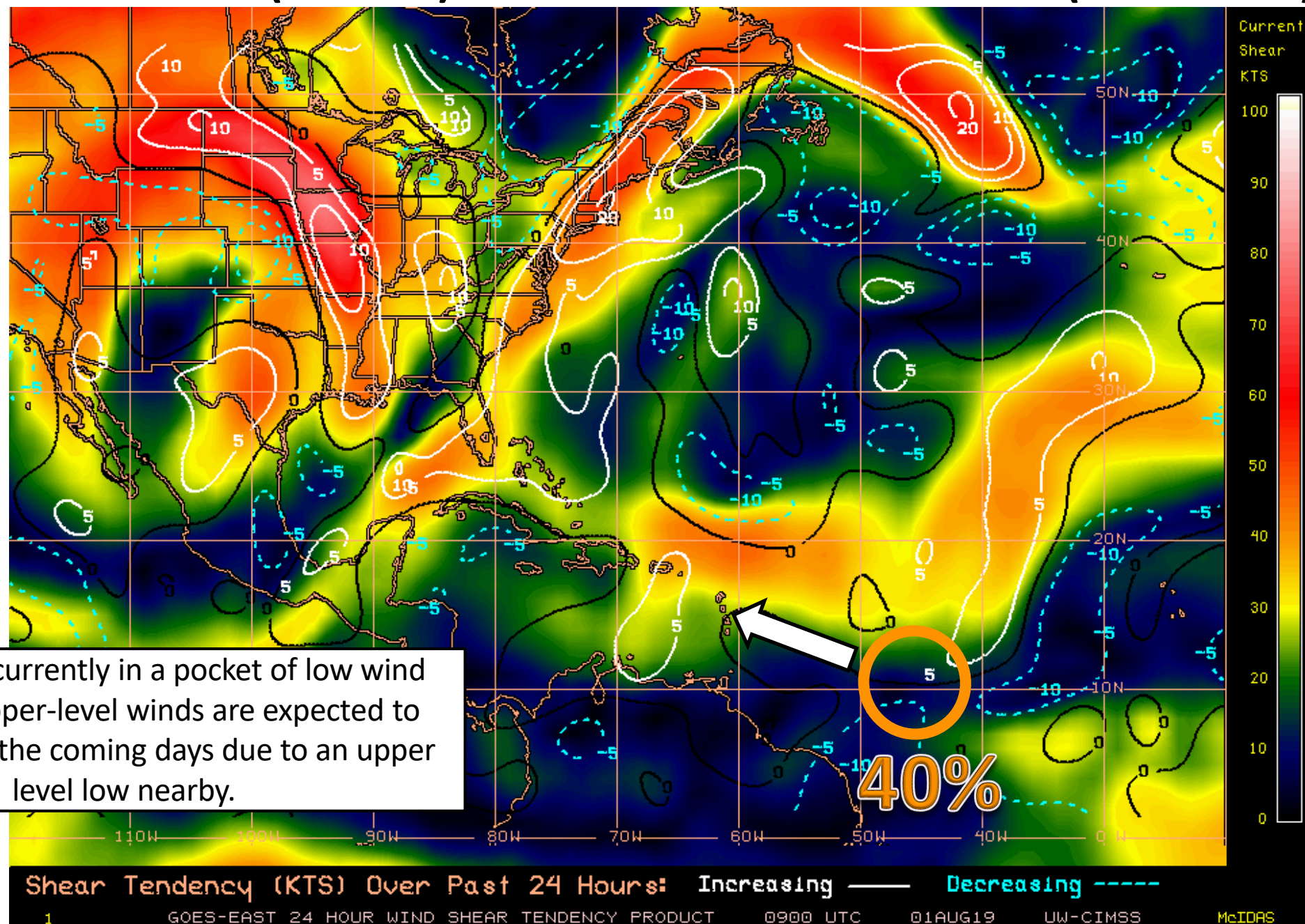
Chance of development: — None — Low — Medium — High



Steering Currents



Wind Shear (shaded) and Wind Shear Tendencies (contoured)

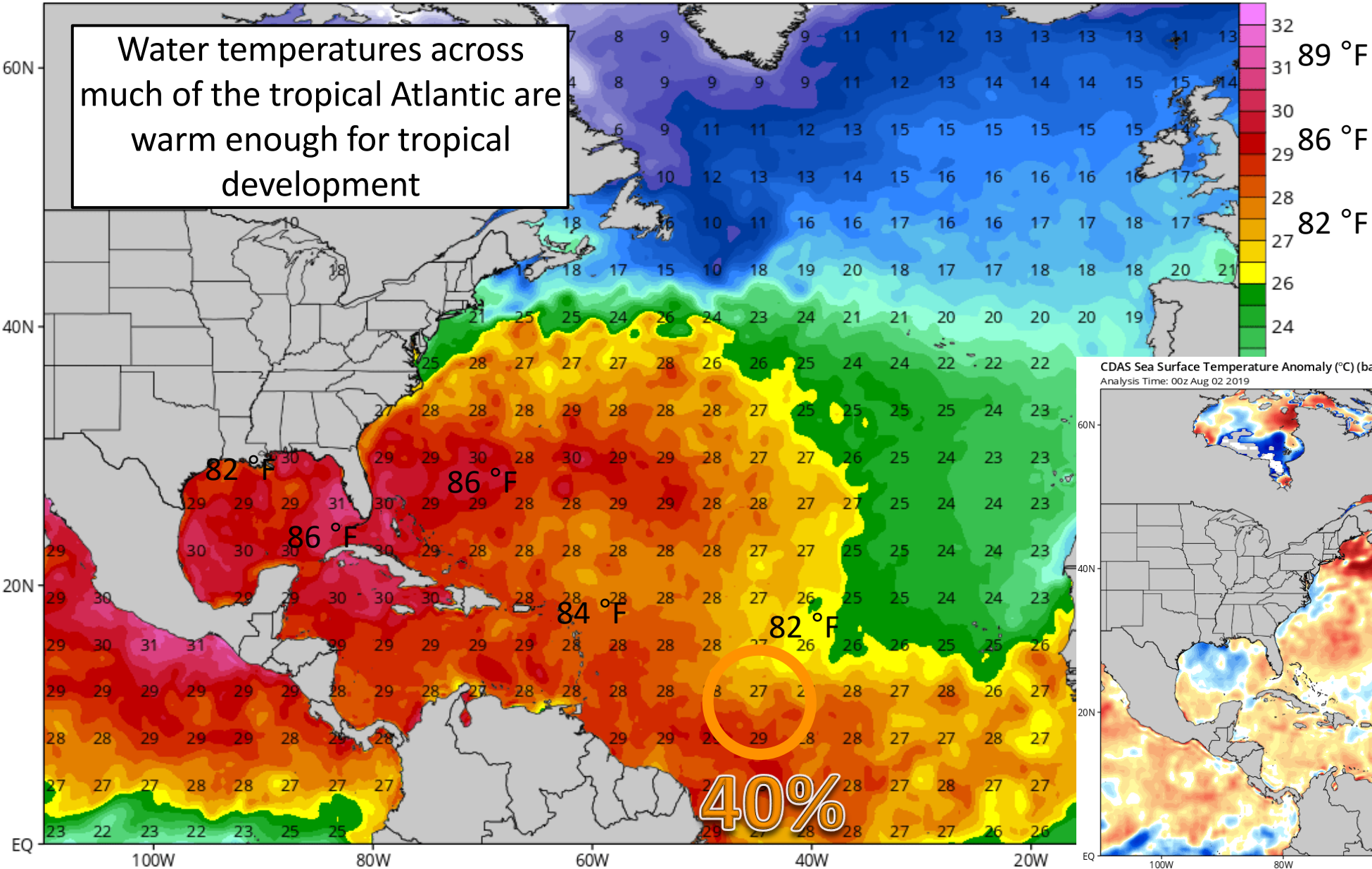


Current Sea Surface Temperatures

CDAS Sea Surface Temperature (°C)

Analysis Time: 00z Aug 02 2019

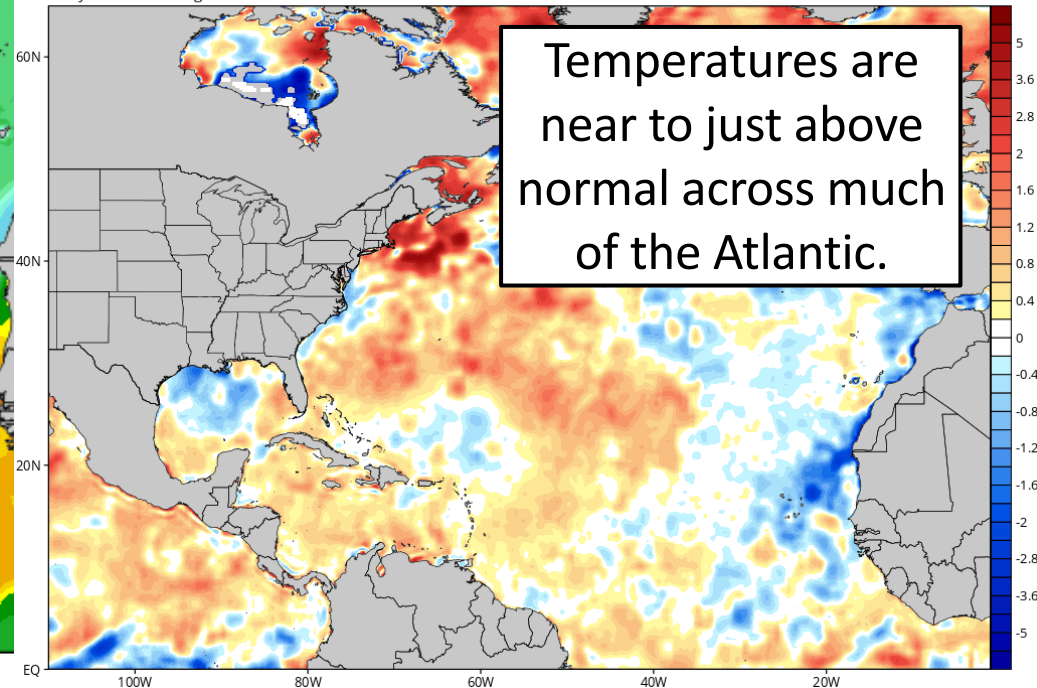
TROPICALTIDBITS.COM



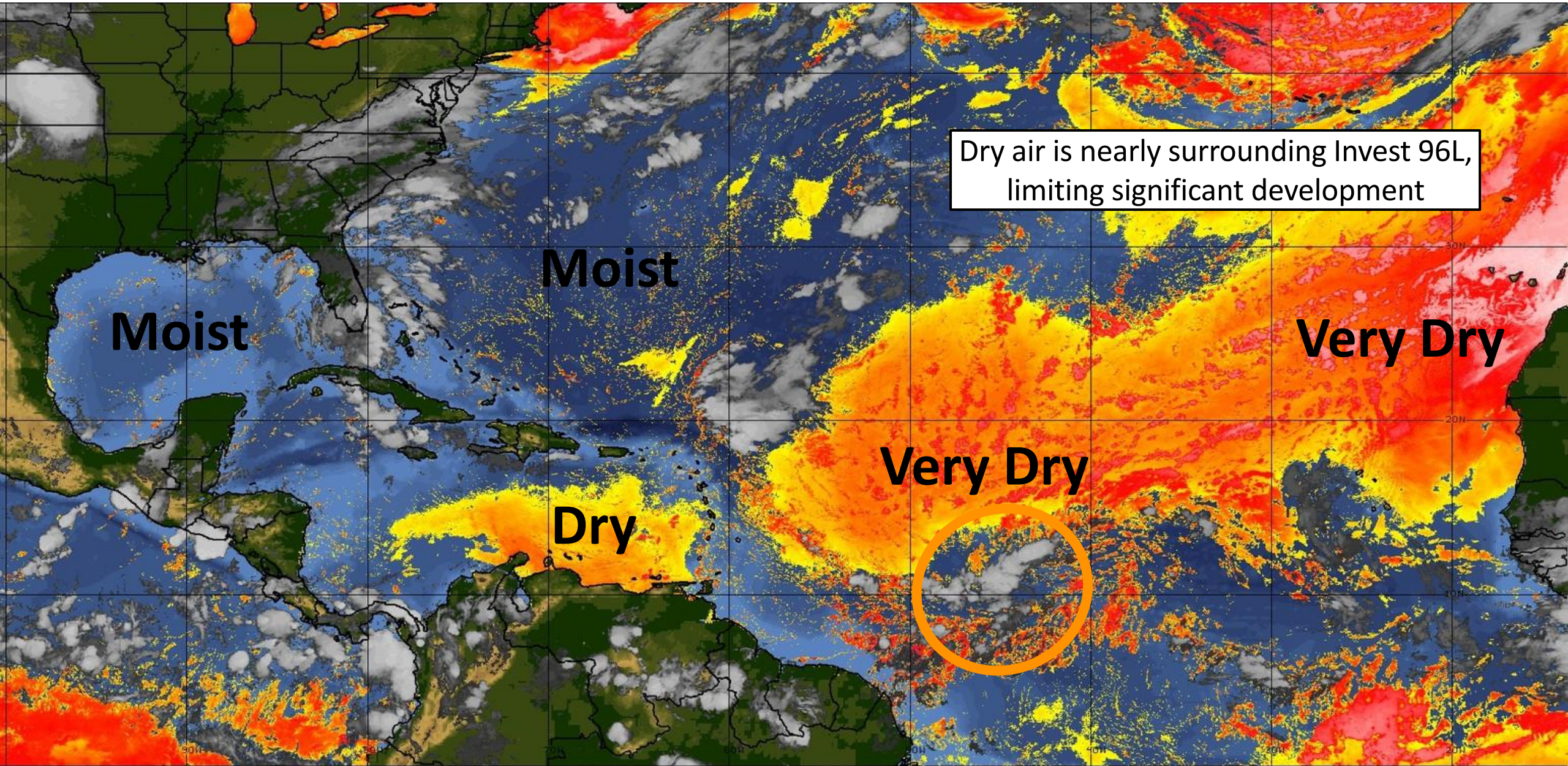
CDAS Sea Surface Temperature Anomaly (°C) (based on CFSR 1981-2010 Climatology)

Analysis Time: 00z Aug 02 2019

TROPICALTIDBITS.COM



Dry Air & Saharan Dust



Dry air is nearly surrounding Invest 96L,
limiting significant development

Moist

Moist

Very Dry

Very Dry

Dry

LESS <----- DRY AIR (LOW/MID-LEVEL) AND/OR DUSTY SAL AIRMASS -----> MORE



Five-Day Graphical Tropical Weather Outlook

National Hurricane Center Miami, Florida



Disturbance 1

An elongated area of low pressure located over the central tropical Atlantic Ocean several hundred miles southeast of the Lesser Antilles continues to generate limited showers and thunderstorms. Some slow development of this system is possible, and a tropical depression could form well east of the Leeward Islands by early next week while the low moves west-northwestward at 10 to 15 mph. Upper-level winds are forecast to become less conducive for development as the system approaches the Leeward Islands Tuesday and Wednesday.

***Formation chance through 48 hours...low...near 20 percent.**

***Formation chance through 5 days...medium...near 40 percent.**

*****Development chances have decreased since yesterday.*****

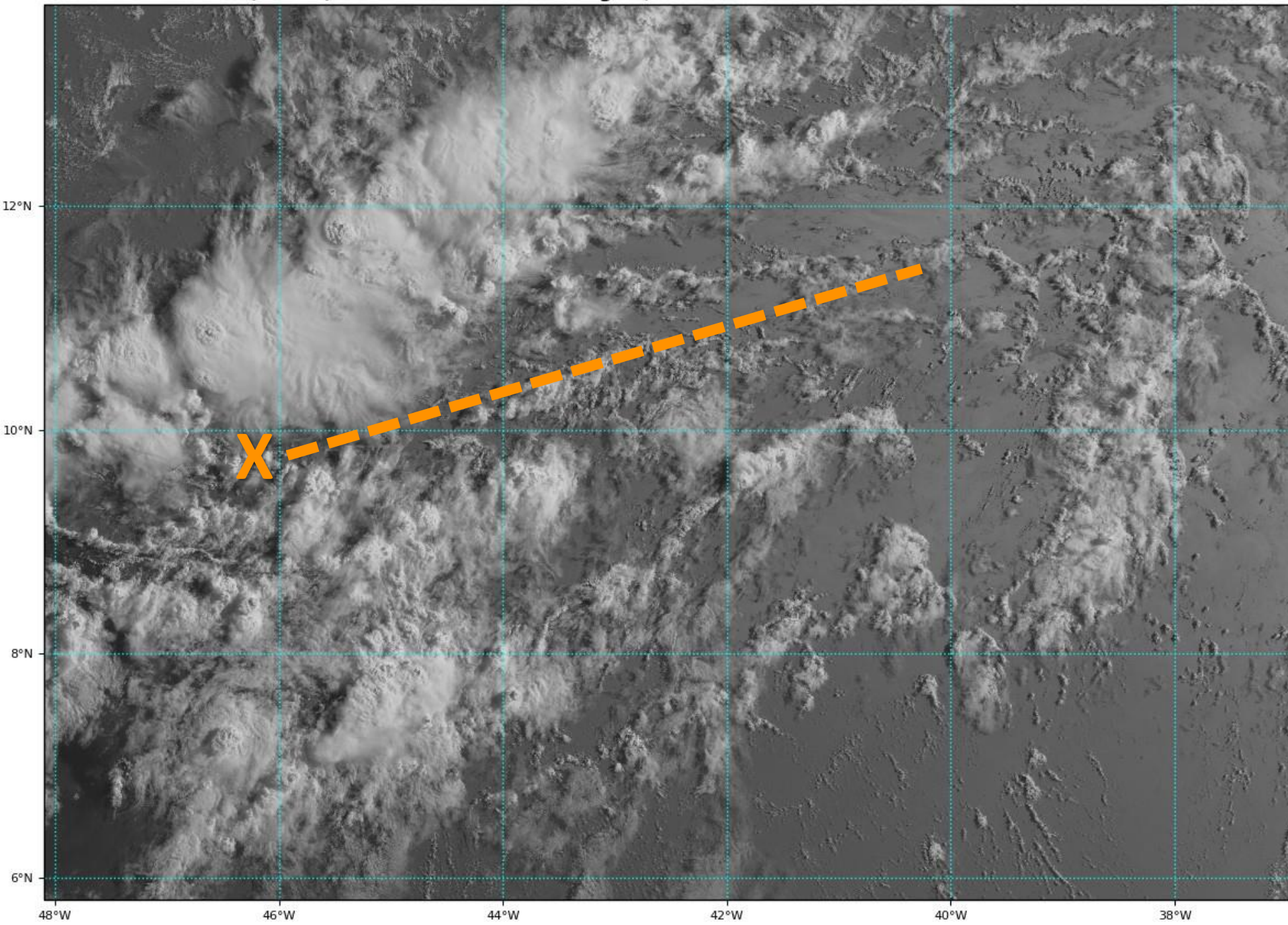
8:00 am EDT
Fri Aug 2 2019

100W 90W 80W 70W 60W 50W 40W 30W 20W 15N 5N

Current Disturbances and Five-Day Cyclone Formation Chance: < 40% 40-60% > 60%

Tropical or Sub-Tropical Cyclone: Depression Storm Hurricane

Post-Tropical Cyclone or Remnants



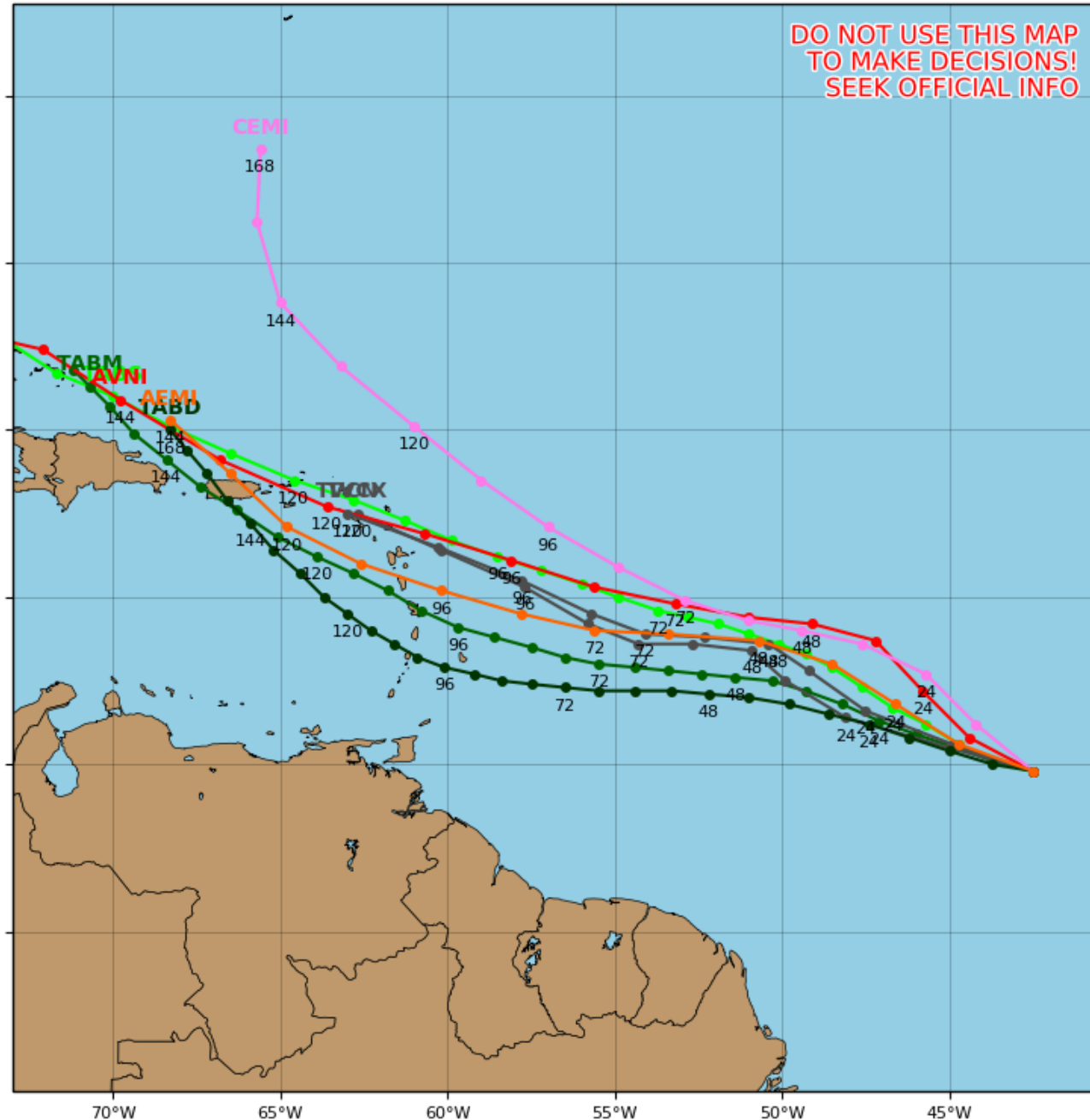
Current Visible Satellite – Invest 96L

The primary center of 96L is ill-defined (orange X). The center is elongated off to the east-northeast (orange dashed line).

Invest 96L Model Track Guidance

Initialized at 06z Aug 02 2019

Levi Cowan - tropicaltidbits.com



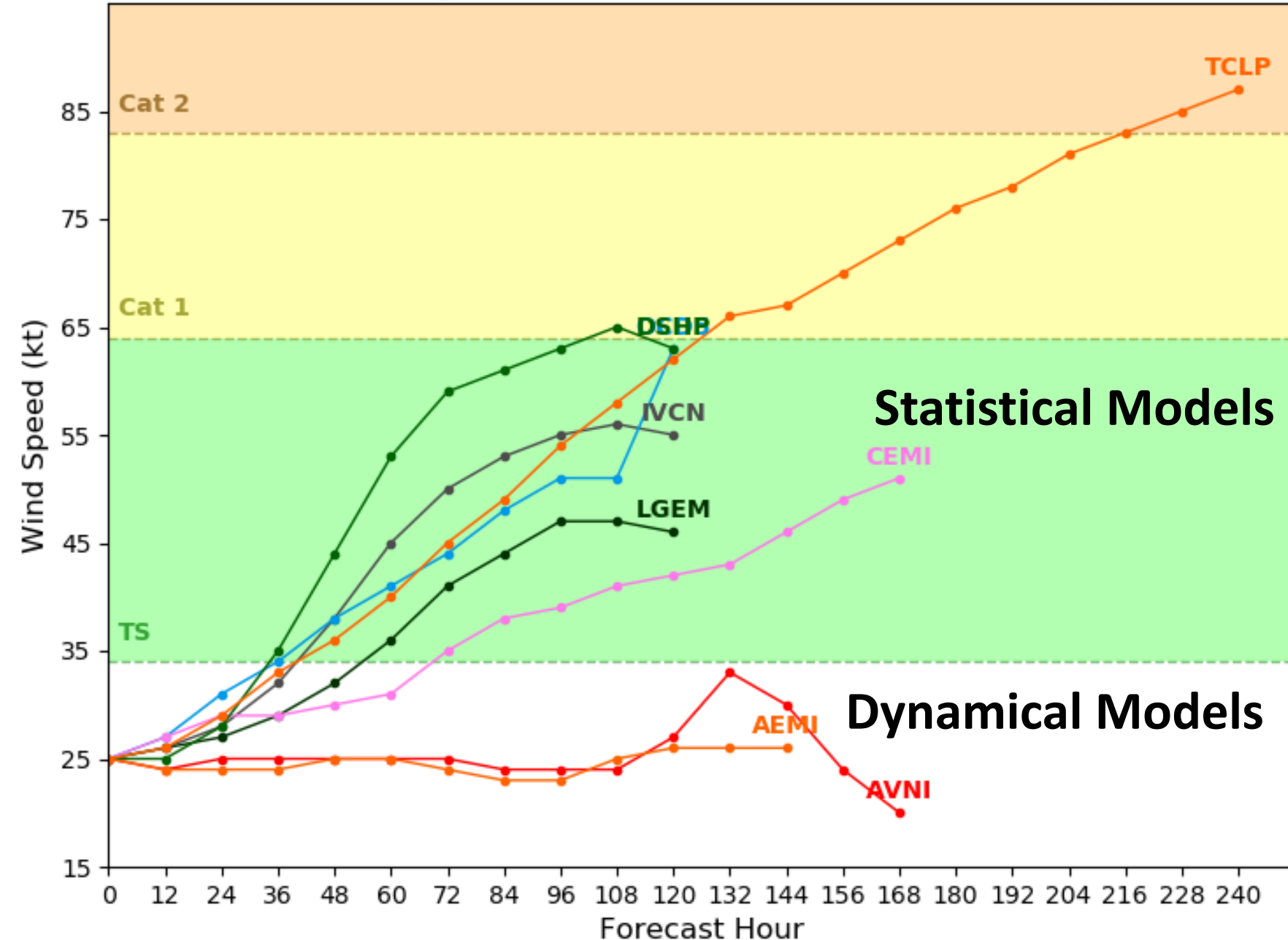
Current Model Track Guidance for Invest 96L

Model guidance is generally in agreement with 96L moving to the west-northwest over the next several days. 96L should reach the Lesser Antilles in about 4 days and be near Puerto Rico in about 5-6 days.

Invest 96L Model Intensity Guidance

Initialized at 06z Aug 02 2019

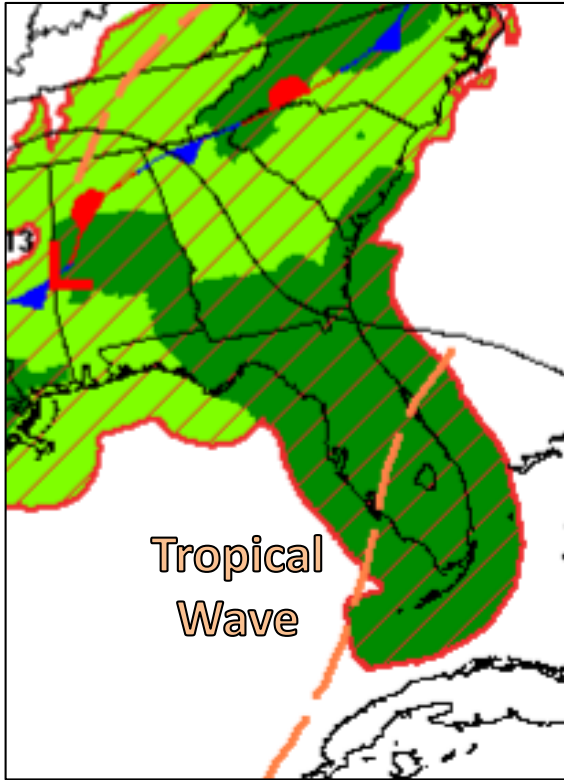
Levi Cowan - tropicaltidbits.com



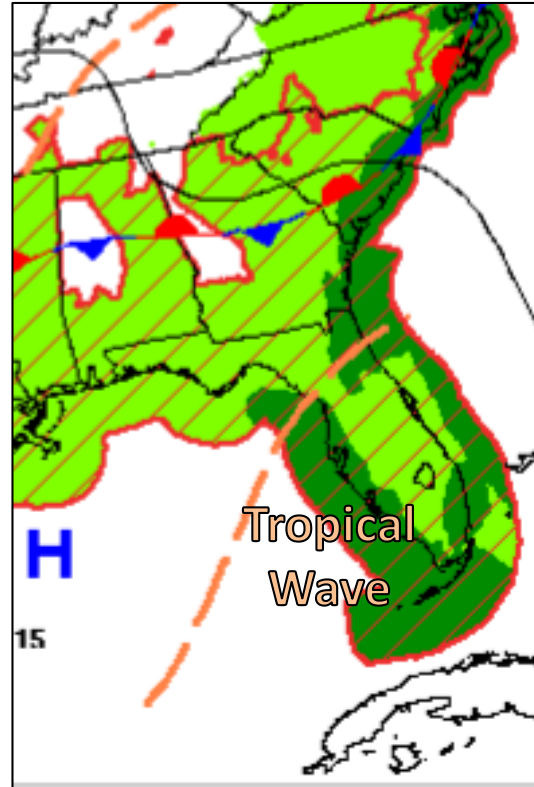
Current Model Intensity Guidance for Invest 96L

Statistical models (which don't account for the current state of the atmosphere) are the only models that show strengthening of any significance. Dynamical models keep the system weak.

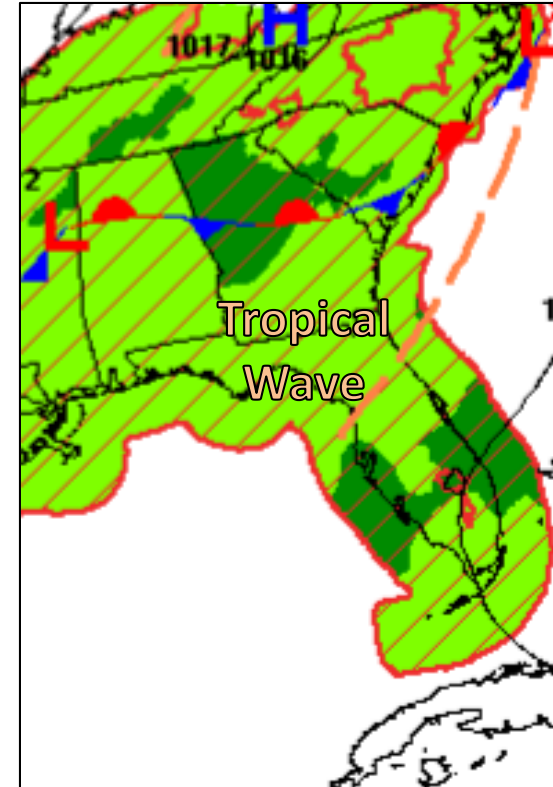
Forecast Weather Maps (fronts)



Friday



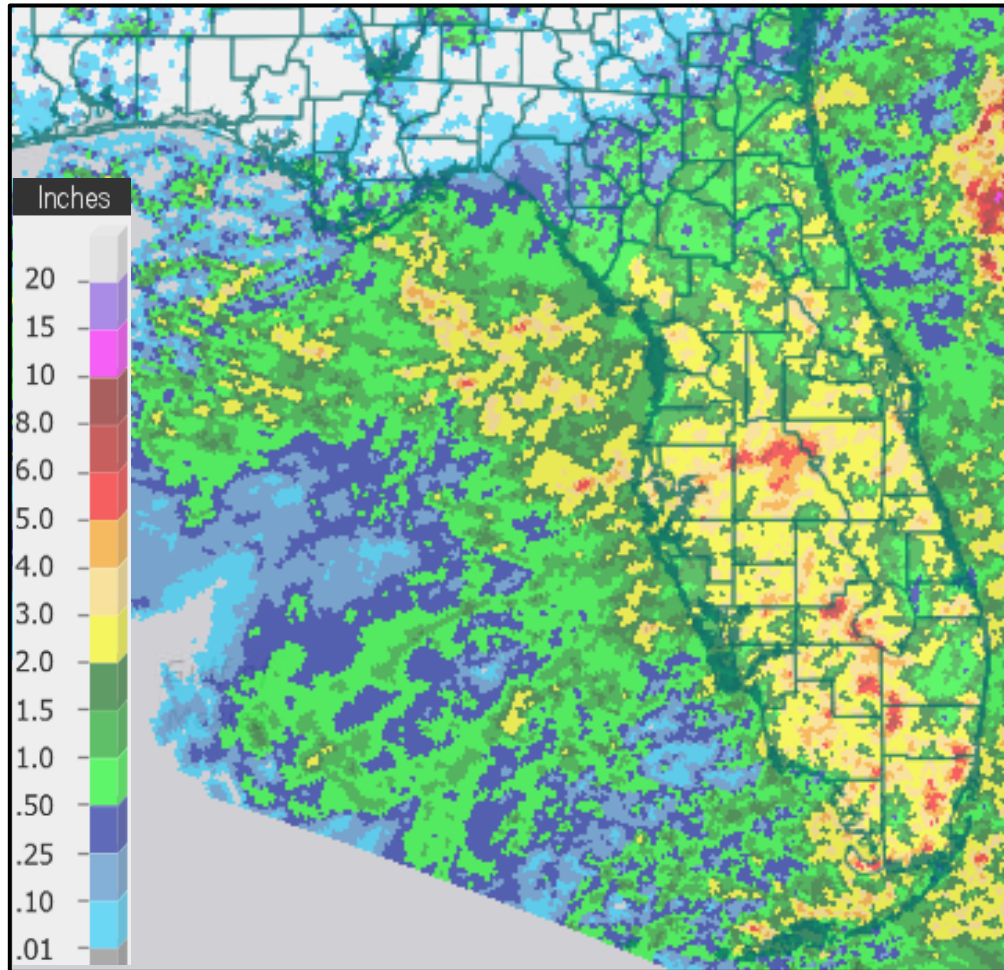
Saturday



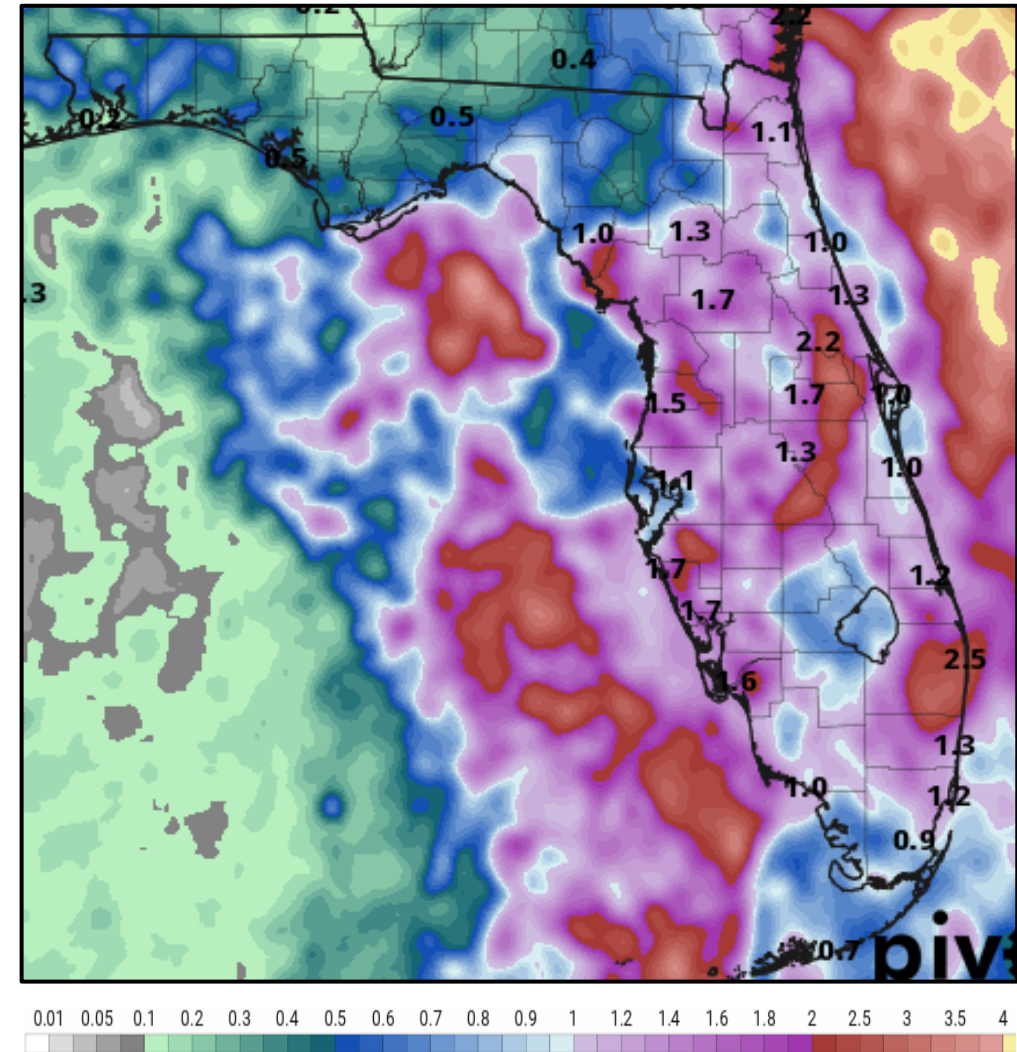
Sunday

A tropical wave (former Invest 95L) is expected to move over the Peninsula this weekend. Copious tropical moisture associated with this wave will bring numerous to widespread showers with embedded thunderstorms to much of the Peninsula. Locally heavy rainfall is possible with the storms. Gusty winds and isolated waterspouts are also possible with the storms. However, the National Hurricane Center is no longer monitoring this wave for any potential tropical development.

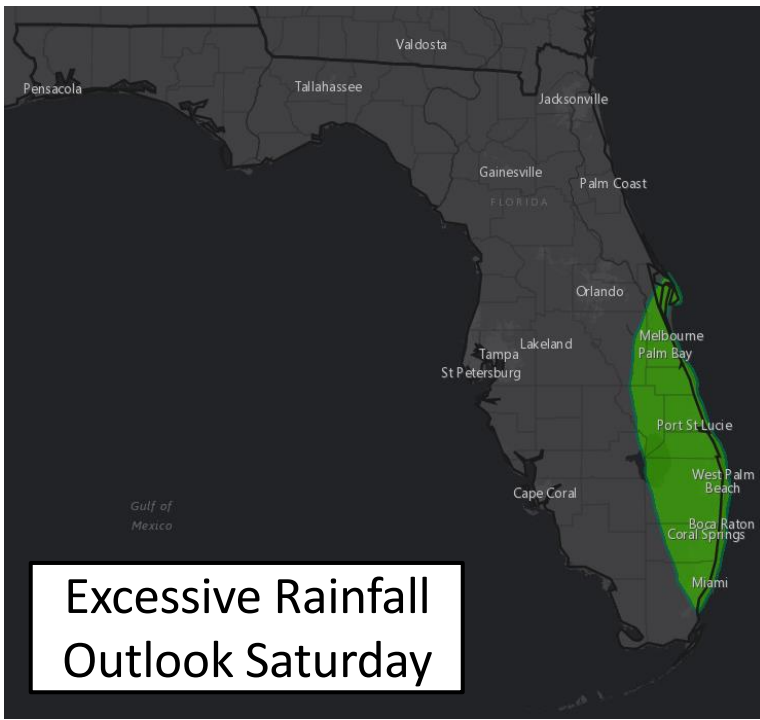
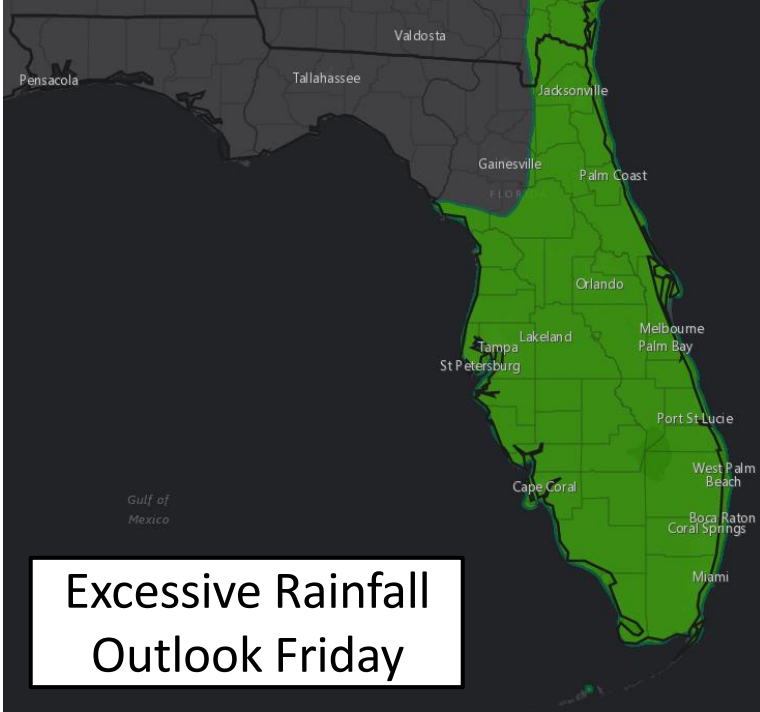
Estimated Rainfall Totals Last 7 Days



Cumulative Rainfall Totals Next 5 Days



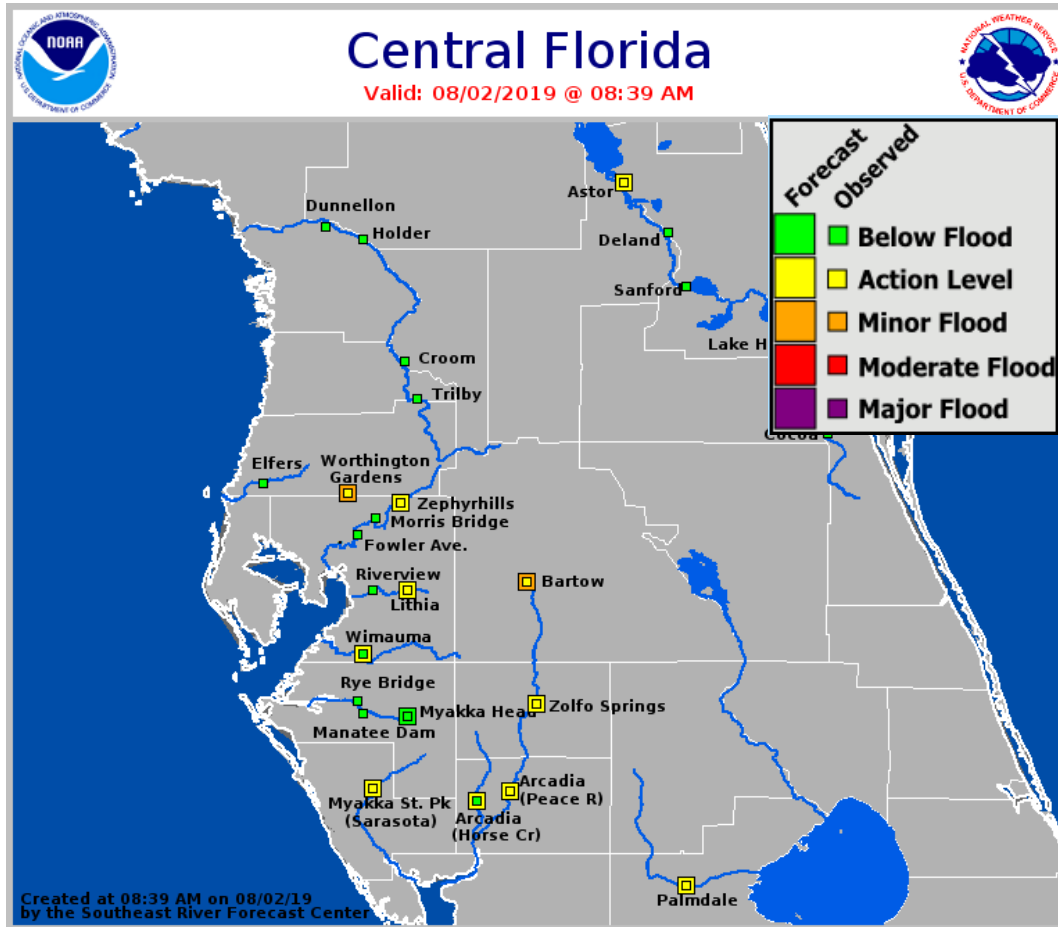
About 2-4" of rain has fallen across much of the Peninsula over the last week or so with localized totals up to 6". Over the next 3 days, another 1-3" of rain widespread is expected. However, the reasonable worst case rainfall for parts of the Peninsula is around 3-6". Some localized totals could reach 6" or more through the weekend where heavy rain bands set up.



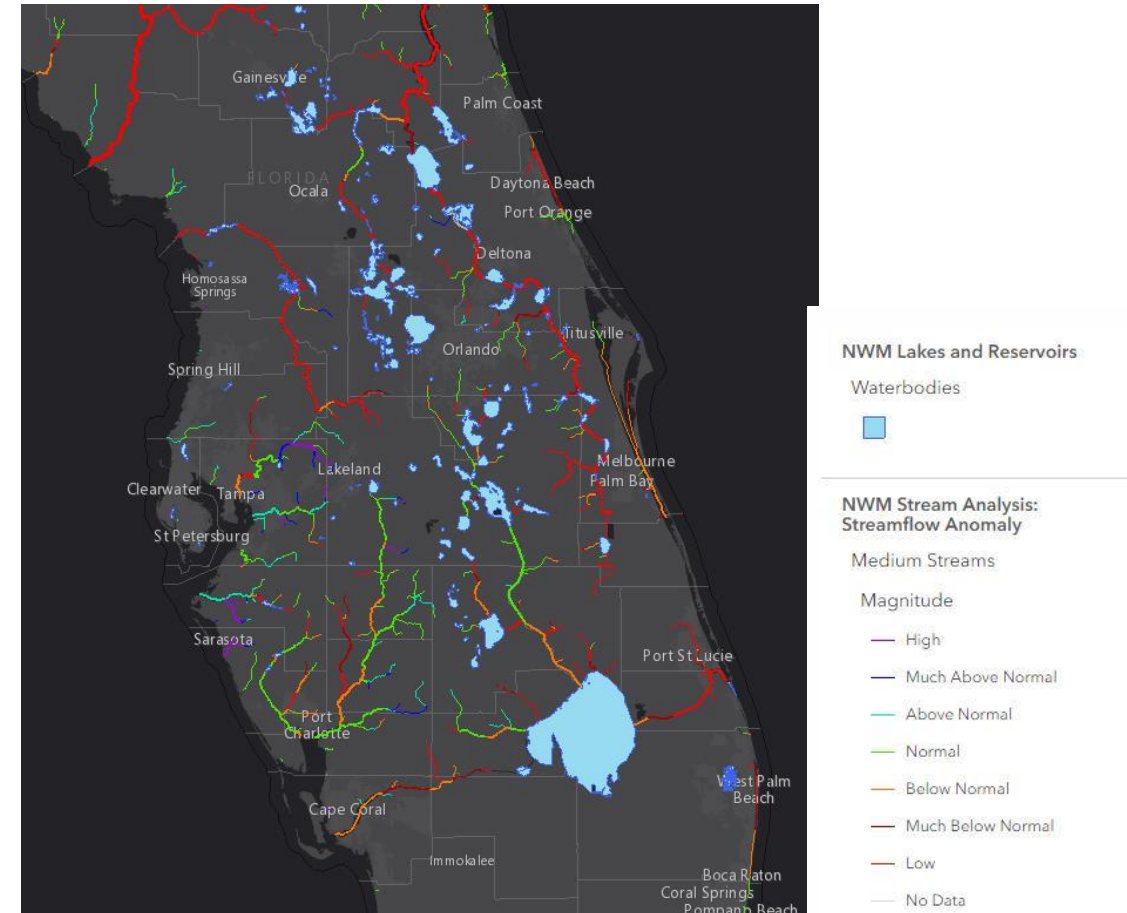
Understanding WPC Excessive Rainfall Risk Categories				
No Area/Label	MARGINAL (MRGL)	SLIGHT (SLGT)	MODERATE (MDT)	HIGH (HIGH)
Flash floods are generally not expected.	Isolated flash floods possible	Scattered flash floods possible	Numerous flash floods likely	Widespread flash floods expected
www.wpc.ncep.noaa.gov @NWSWPC	Localized and primarily affecting places that can experience rapid runoff with heavy rainfall.	Mainly localized. Most vulnerable are urban areas, roads, small streams and washes. Isolated significant flash floods possible.	Numerous flash flooding events with significant events possible. Many streams may flood, potentially affecting larger rivers.	Severe, widespread flash flooding. Areas that don't normally experience flash flooding, could. Lives and property in greater danger.
<div>Flash flooding near me?</div> <div>Flash Flooding</div> <div>NO Flash Flooding</div>				
 WEATHER PREDICTION CENTER				

There is a marginal risk of excessive rainfall that could lead to some isolated, minor flash flooding in South Florida today and Saturday. This will mainly be confined to urban, low-lying, or poor drainage areas.

Current/Forecast River Stages



Current Streamflow Anomalies



River Flood Warnings are in effect for the Cypress Creek at Worthington Gardens and the Peace River at Bartow. Additional rivers are in action stage across West Central Florida. Minor flooding may become possible along additional rivers should heavier rainfall occur. It will take about 2-3" over the next 3 days to cause minor flooding along the many West Central Rivers.

Summary

Invest 96L/Eastern Atlantic Wave

- Invest 96L is located several hundred miles east-southeast of the Lesser Antilles, moving west-northwest at 10-15 mph.
- Somewhat unfavorable upper-level winds and nearby dry air will only allow for slight development over the next couple days.
- It still has some time this weekend to organize, and it could still become a tropical depression late this weekend or early next week.
- Conditions become unfavorable for again early next week as the system approaches the Lesser Antilles and Puerto Rico in about 5 days.
- The National Hurricane Center gives this system a 20% (low) chance of development in the next 48 hours and a 40% (medium) chance days 3-5.

Tropical Wave Over Florida

- A tropical wave will move across the Peninsula through this weekend.
- Strong wind shear will prohibit any development of this wave.
- Heavy rainfall is expected across much of the Peninsula this weekend.

Florida Outlook:

- Rain chances remain high across the Peninsula over the next few days with locally heavy rainfall possible.
- Widespread cumulative rainfall totals of 1-3" are forecast over the next 5 days, with localized totals of 6+" which may result in some isolated flash flooding through the weekend.
- Isolated waterspouts and gusty winds are possible in some of the stronger thunderstorms.
- Due to the New Moon, tides are running 0.5'-1.5' above normal. Should a heavy rainfall event occur at high tide near the coast, the risk for minor flooding will be increased. Water will have difficulty draining until high tide begins to recede.
- Due to recent rainfall, some West-Central Florida rivers are in minor flood stage. Additional rainfall totals over 2-3" will result in additional minor river flooding.
- Invest 96L poses no threat to Florida for at least the next 7 days, but should continue to be monitored.

The next briefing packet will be issued Saturday morning. For the latest information on the tropics, please visit the National Hurricane Center website at www.hurricanes.gov.



TROPICAL UPDATE



Created by:

Cameron Young, Assistant State Meteorologist

Cameron.Young@em.myflorida.com

State Meteorological Support Unit

Florida Division of Emergency Management

Users wishing to subscribe (approval pending) to this distribution list, register at https://public.govdelivery.com/accounts/FLDEM/subscriber/new?topic_id=SERT_Met_Tropics. Other reports available for subscription are available at <https://public.govdelivery.com/accounts/FLDEM/subscriber/new?preferences=true>