



TROPICAL UPDATE



5 PM EDT

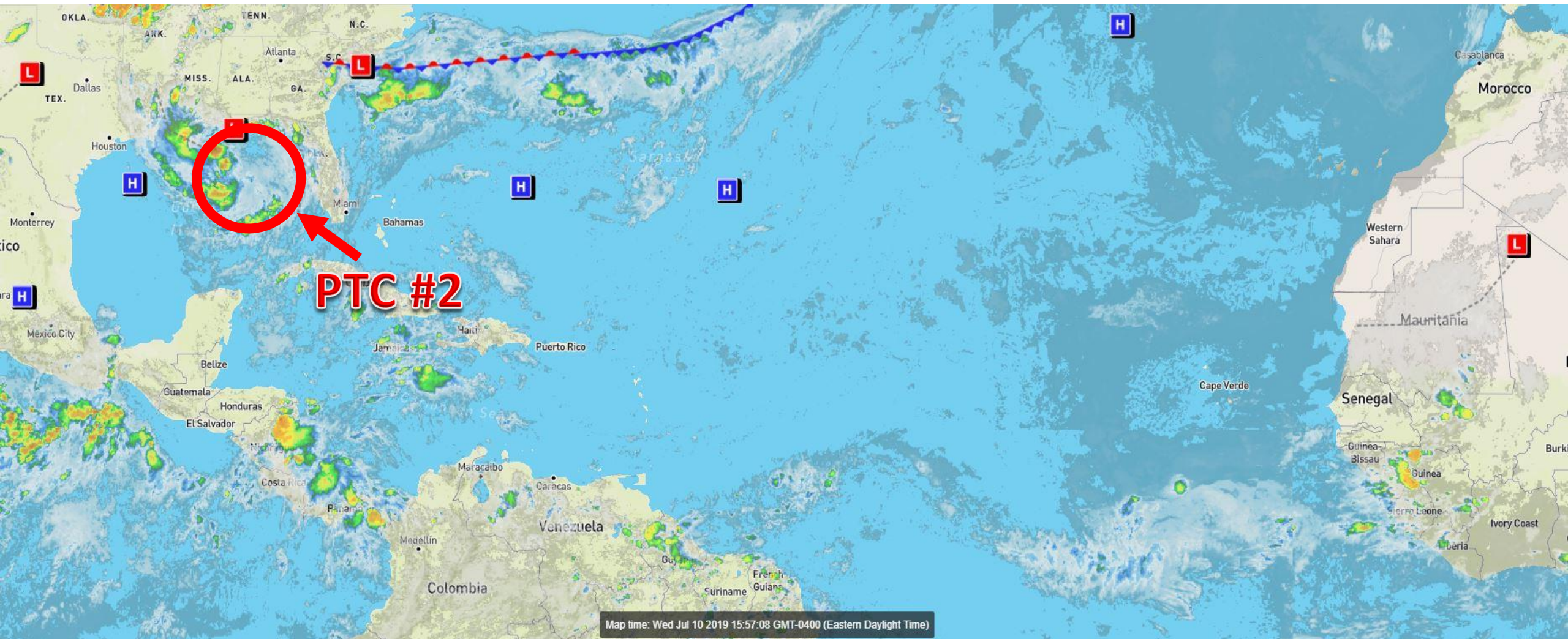
Wednesday, July 10, 2019

Potential Tropical Cyclone #2

This update is intended for government and emergency response officials, and is provided for informational and situational awareness purposes only. Forecast conditions are subject to change based on a variety of environmental factors. For additional information, or for any life safety concerns with an active weather event please contact your County Emergency Management or Public Safety Office, local National Weather Service forecast office, or visit the National Hurricane Center website at www.hurricanes.gov.

Atlantic Basin Satellite Image

Chance of development: — None — Low — Medium — High





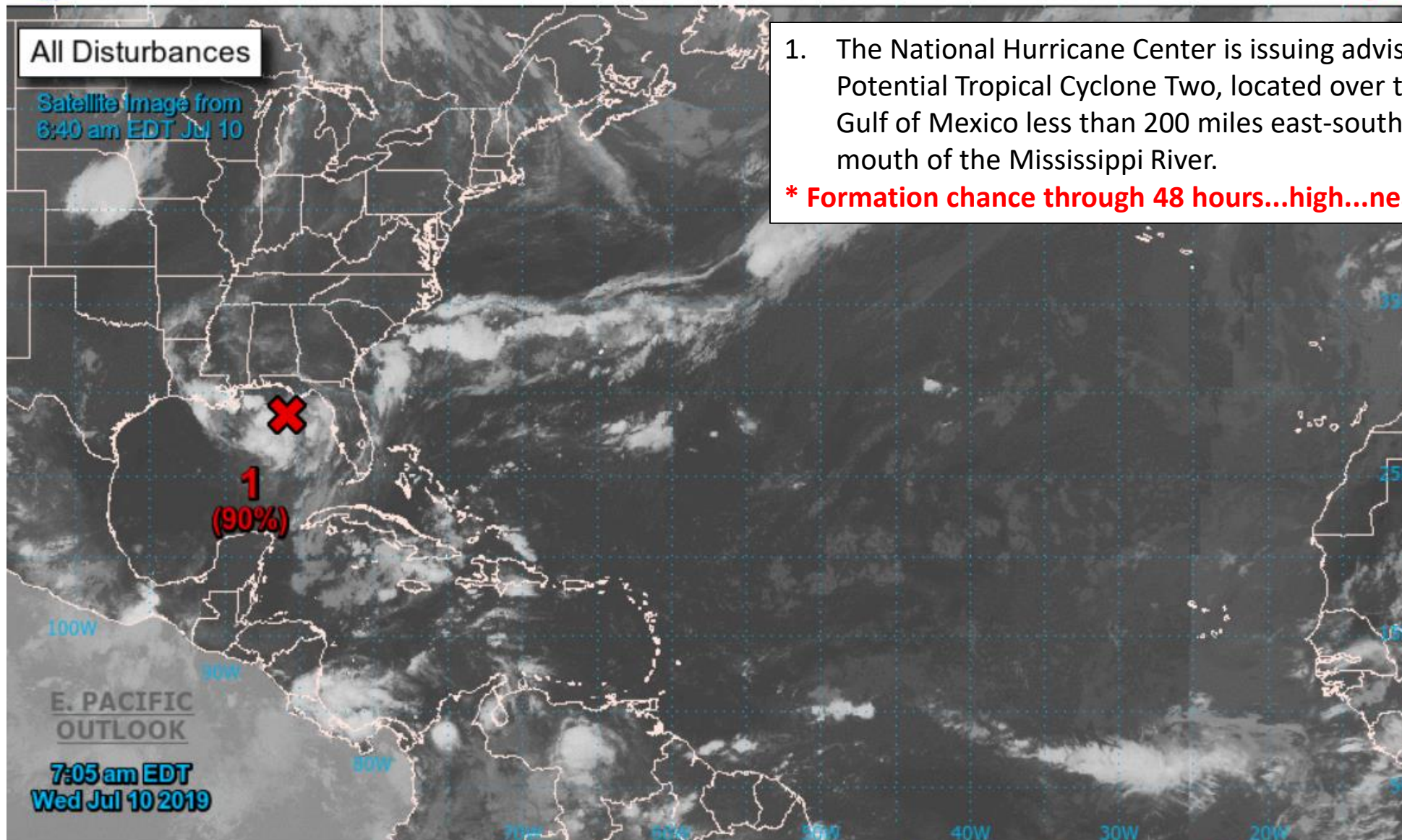
Two-Day Graphical Tropical Weather Outlook

National Hurricane Center Miami, Florida



All Disturbances

Satellite image from
6:40 am EDT Jul 10

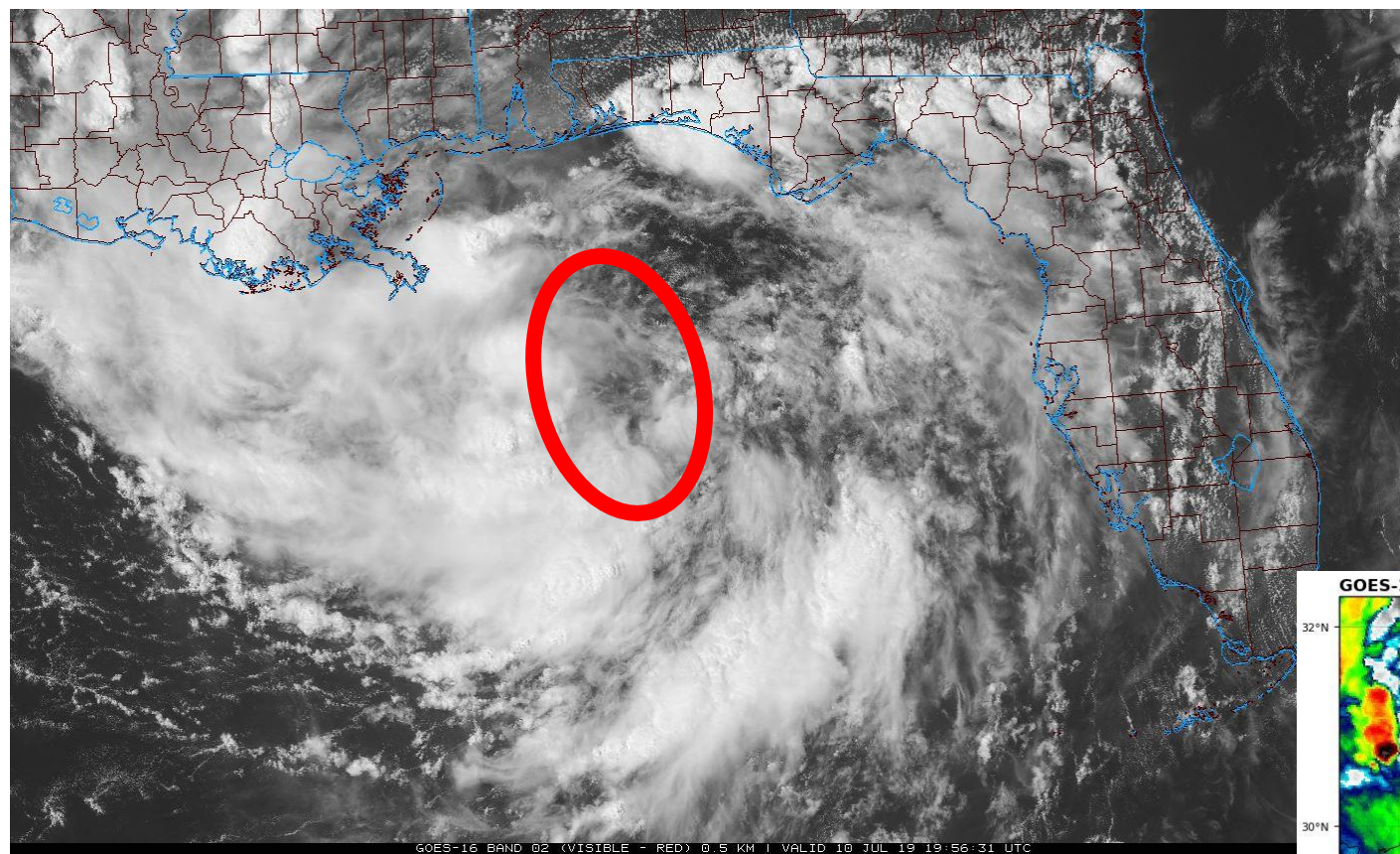


1. The National Hurricane Center is issuing advisories on Potential Tropical Cyclone Two, located over the northeastern Gulf of Mexico less than 200 miles east-southeast of the mouth of the Mississippi River.

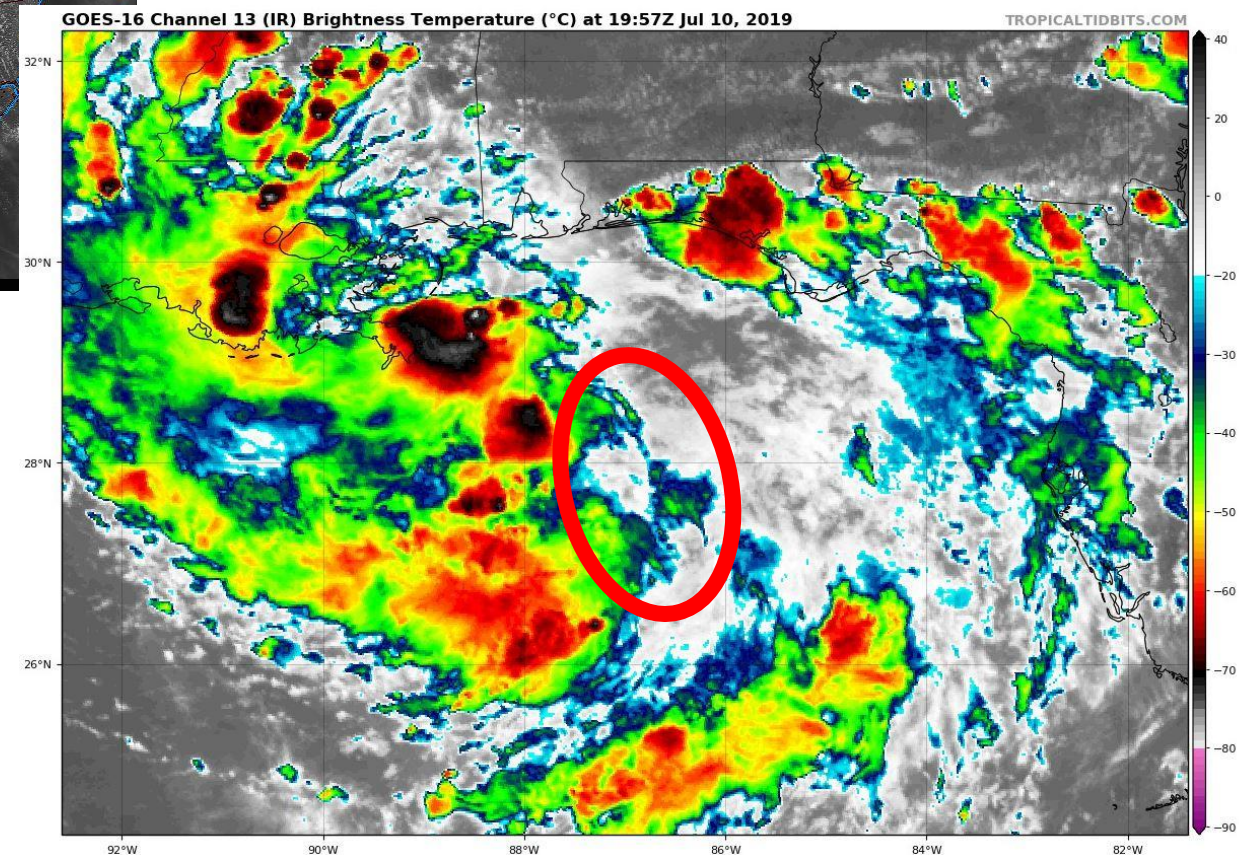
*** Formation chance through 48 hours...high...near 100 percent.**

Current Disturbances and Two-Day Cyclone Formation Chance: < 40% 40-60% > 60%
Tropical or Sub-Tropical Cyclone: Depression Storm Hurricane
 Post-Tropical Cyclone or Remnants

PTC #2 Satellite Images

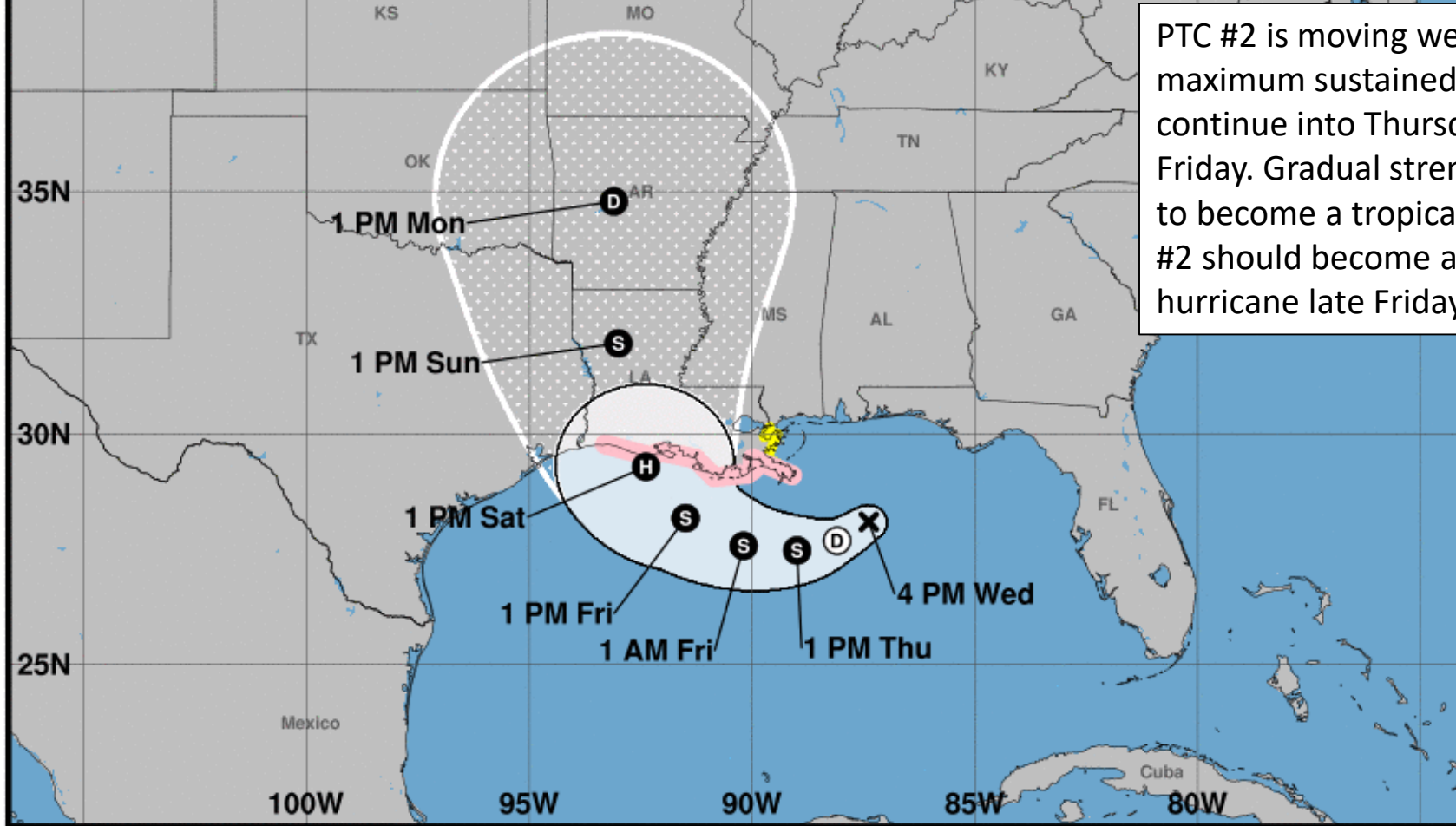
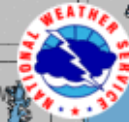


Potential Tropical Cyclone #2 is about 150 miles south of Pensacola. It remains disorganized with an elongated center, but continued organization is expected tonight.





Note: The cone contains the probable path of the storm center but does not show the size of the storm. Hazardous conditions can occur outside of the cone.



PTC #2 is moving west-southwestward at 8 mph with maximum sustained winds of 30 mph. This movement will continue into Thursday before turning northwestward on Friday. Gradual strengthening is expected, and it is expected to become a tropical depression later tonight or Thursday. PTC #2 should become a tropical storm Thursday night and a hurricane late Friday or Saturday.

Potential Tropical Cyclone Two
Wednesday July 10, 2019
4 PM CDT Advisory 2
NWS National Hurricane Center

Current information: X
Center location 28.1 N 87.4 W
Maximum sustained wind 30 mph
Movement WSW at 8 mph

Forecast positions:
● Tropical Cyclone ○ Post/Potential TC
Sustained winds: D < 39 mph
S 39-73 mph H 74-110 mph M > 110 mph

Potential track area:

Day 1-3 Day 4-5

Watches:

Hurricane Trop Stm

Warnings:

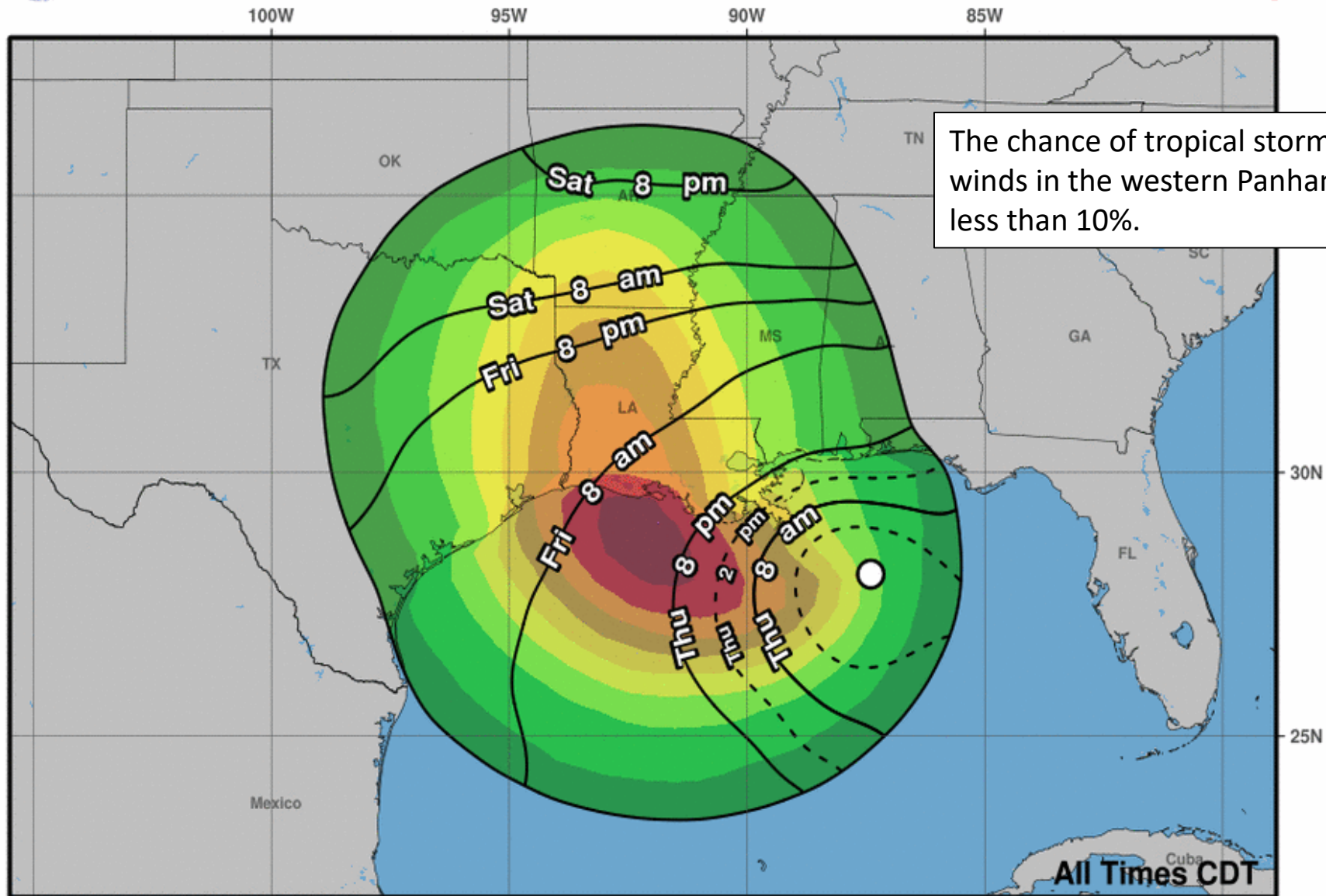
Hurricane Trop Stm

Current wind extent:

Hurricane Trop Stm



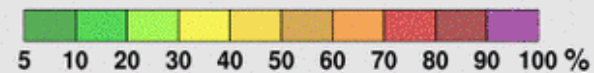
Earliest Reasonable Arrival Time of Tropical-Storm-Force Winds



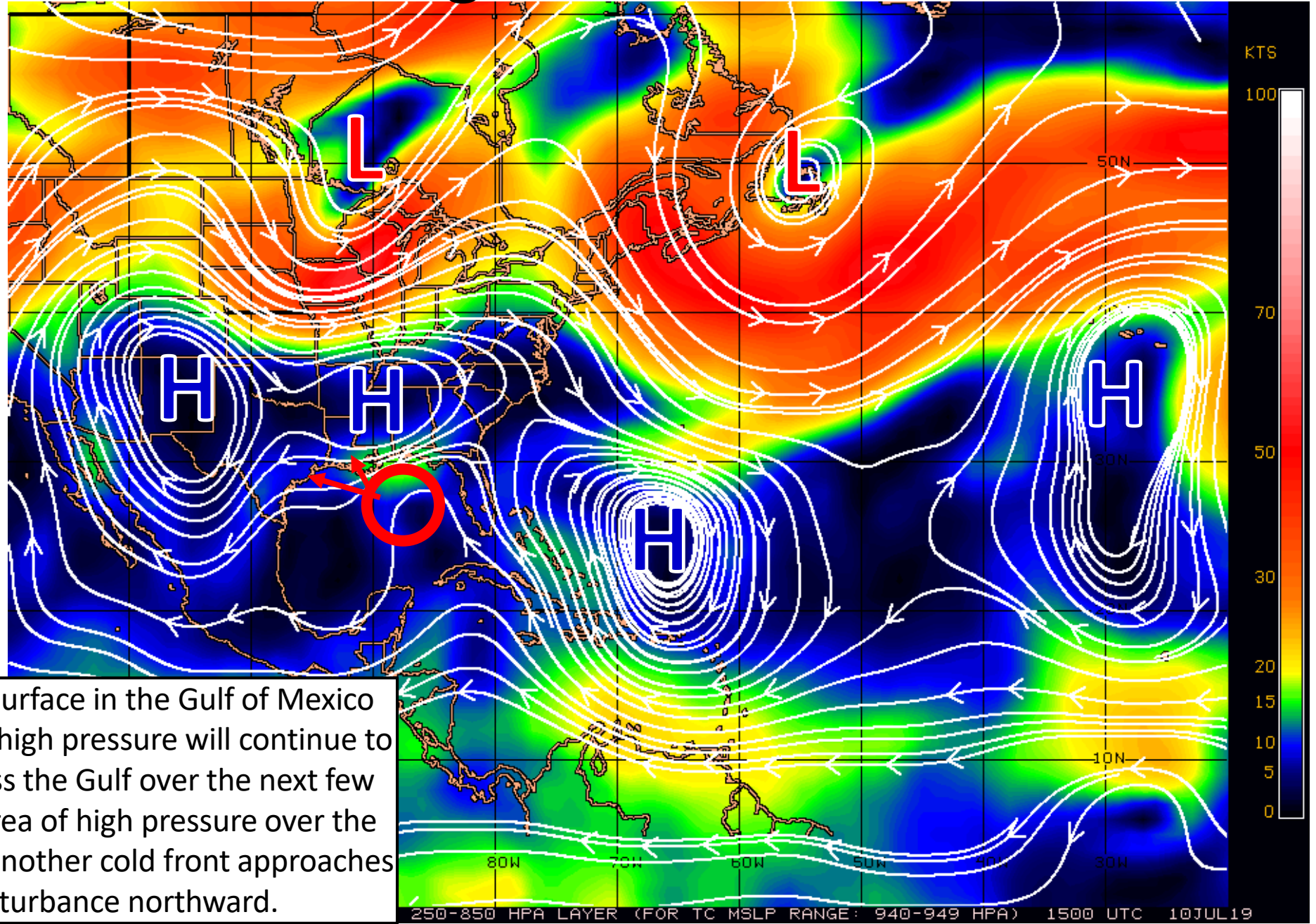
Potential Tropical Cyclone Two
Wed. Jul. 10, 2019 4 pm CDT
Advisory 2

Storm Location & Wind Speed
○ < 34 kt (39 mph)
○ 34-63 kt (39-73 mph)
● ≥ 64 kt (74 mph)

5-day chance of receiving sustained 34+ kt (39+ mph) winds

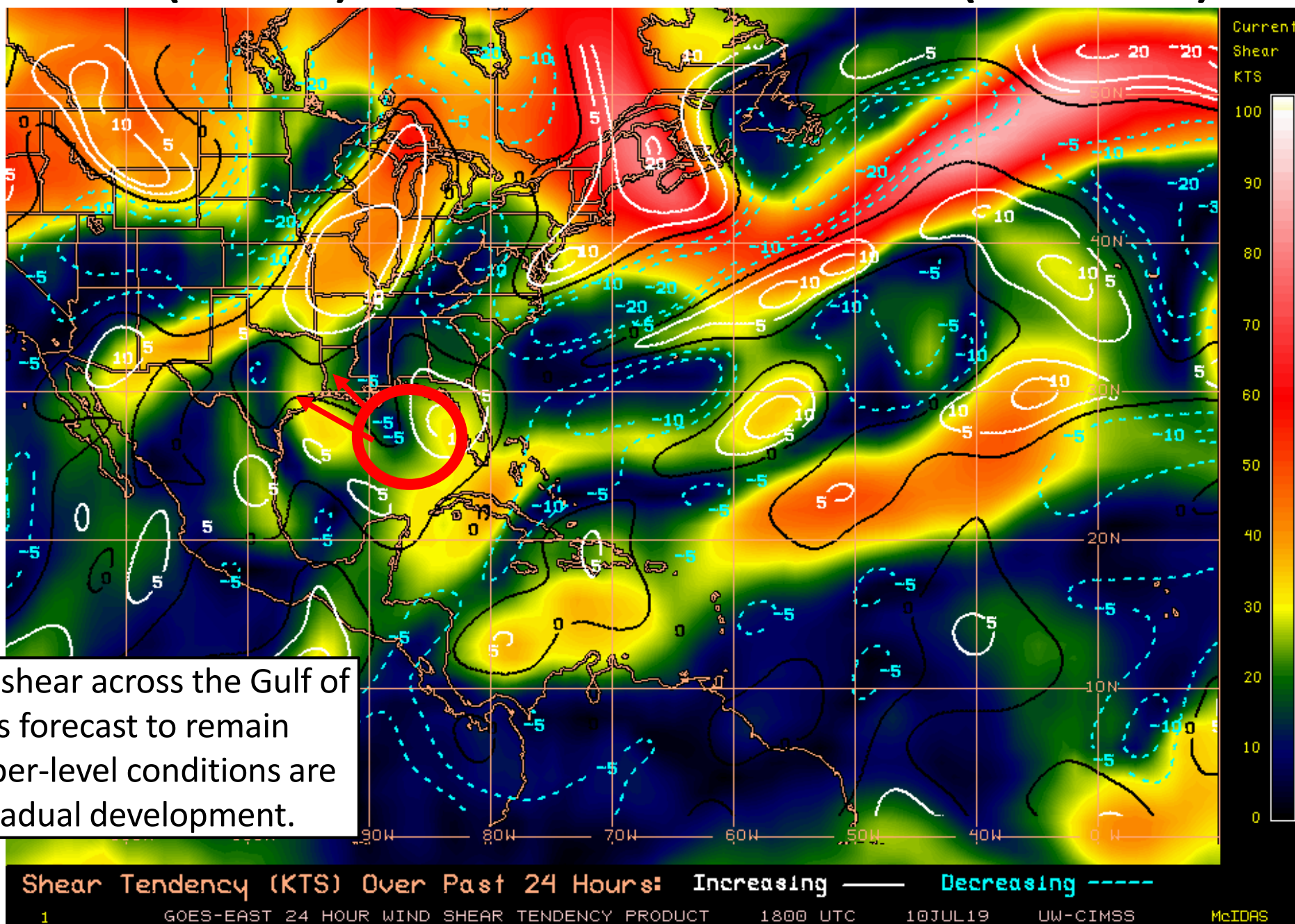


Steering Currents



Steering currents near the surface in the Gulf of Mexico are weak. However, areas of high pressure will continue to steer this system west across the Gulf over the next few days. Later this week, the area of high pressure over the southeast will move east as another cold front approaches to help guide the disturbance northward.

Wind Shear (shaded) and Wind Shear Tendencies (contoured)



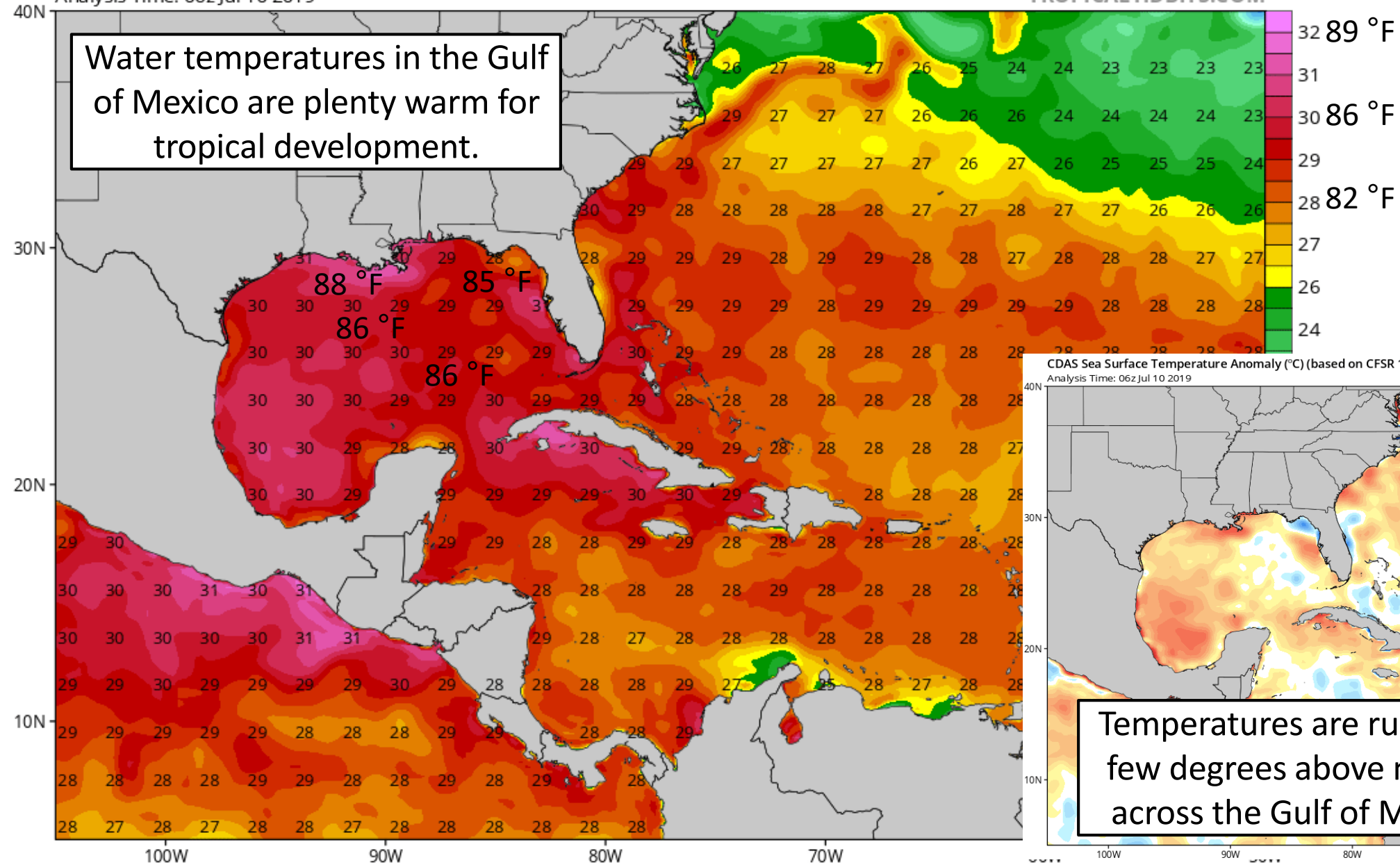
Current Sea Surface Temperatures

CDAS Sea Surface Temperature (°C)

Analysis Time: 06z Jul 10 2019

TROPICALTIDBITS.COM

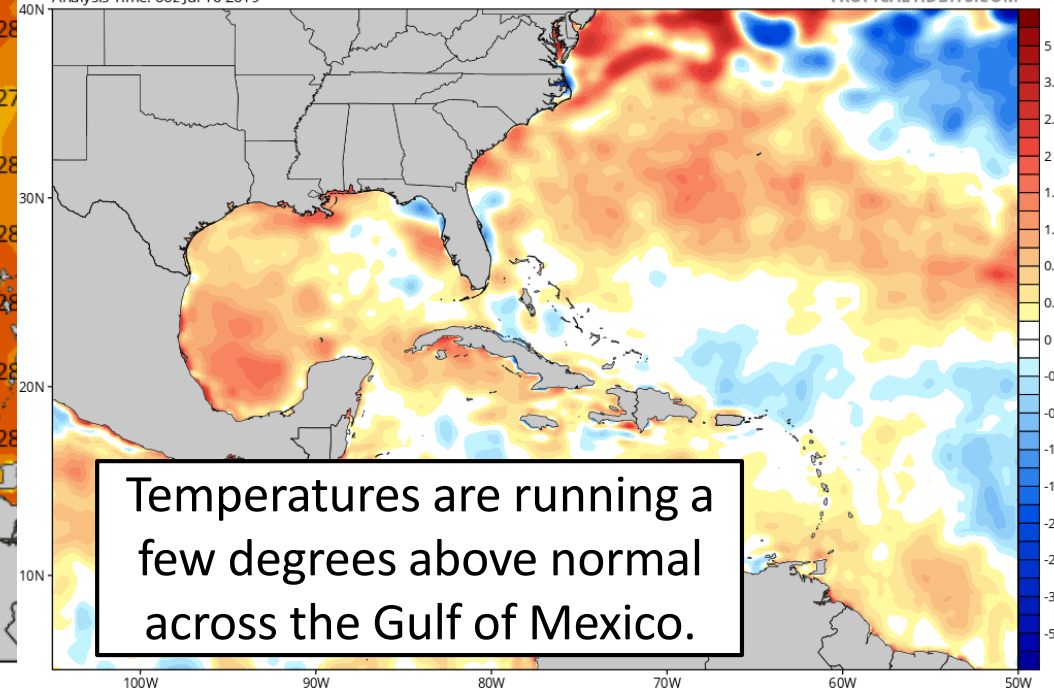
Water temperatures in the Gulf of Mexico are plenty warm for tropical development.



CDAS Sea Surface Temperature Anomaly (°C) (based on CFSR 1981-2010 Climatology)

Analysis Time: 06z Jul 10 2019

TROPICALTIDBITS.COM



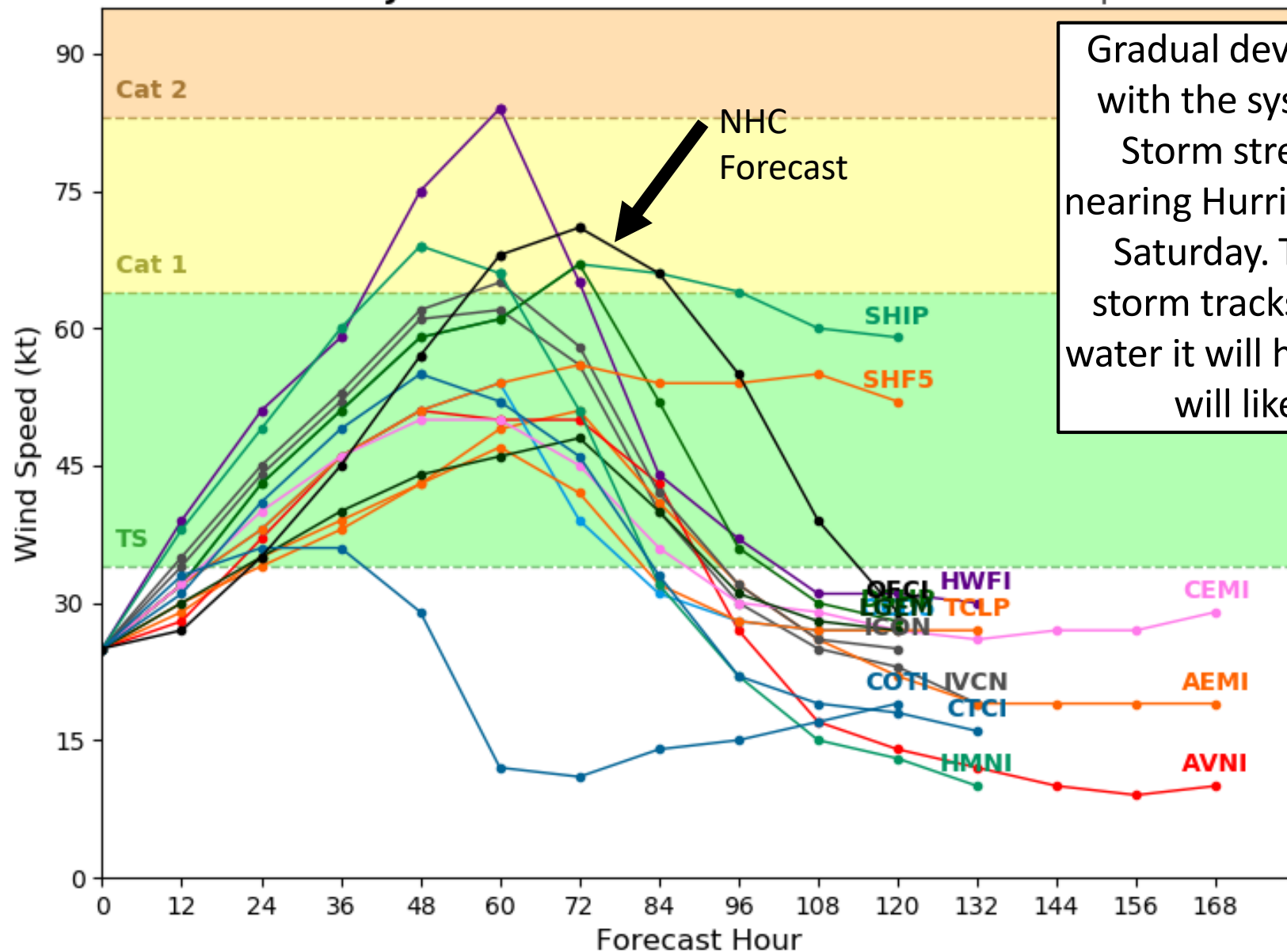
Temperatures are running a few degrees above normal across the Gulf of Mexico.

Current Model Intensity Forecast

Potential Tropical Cyclone TWO Model Intensity Guidanc

Initialized at 18z Jul 10 2019

Levi Cowan - tropicaltidbits.com



Gradual development is expected with the system nearing Tropical Storm strength Thursday, and nearing Hurricane strength Friday or Saturday. The further west the storm tracks, the more time over water it will have and the stronger it will likely be at landfall.

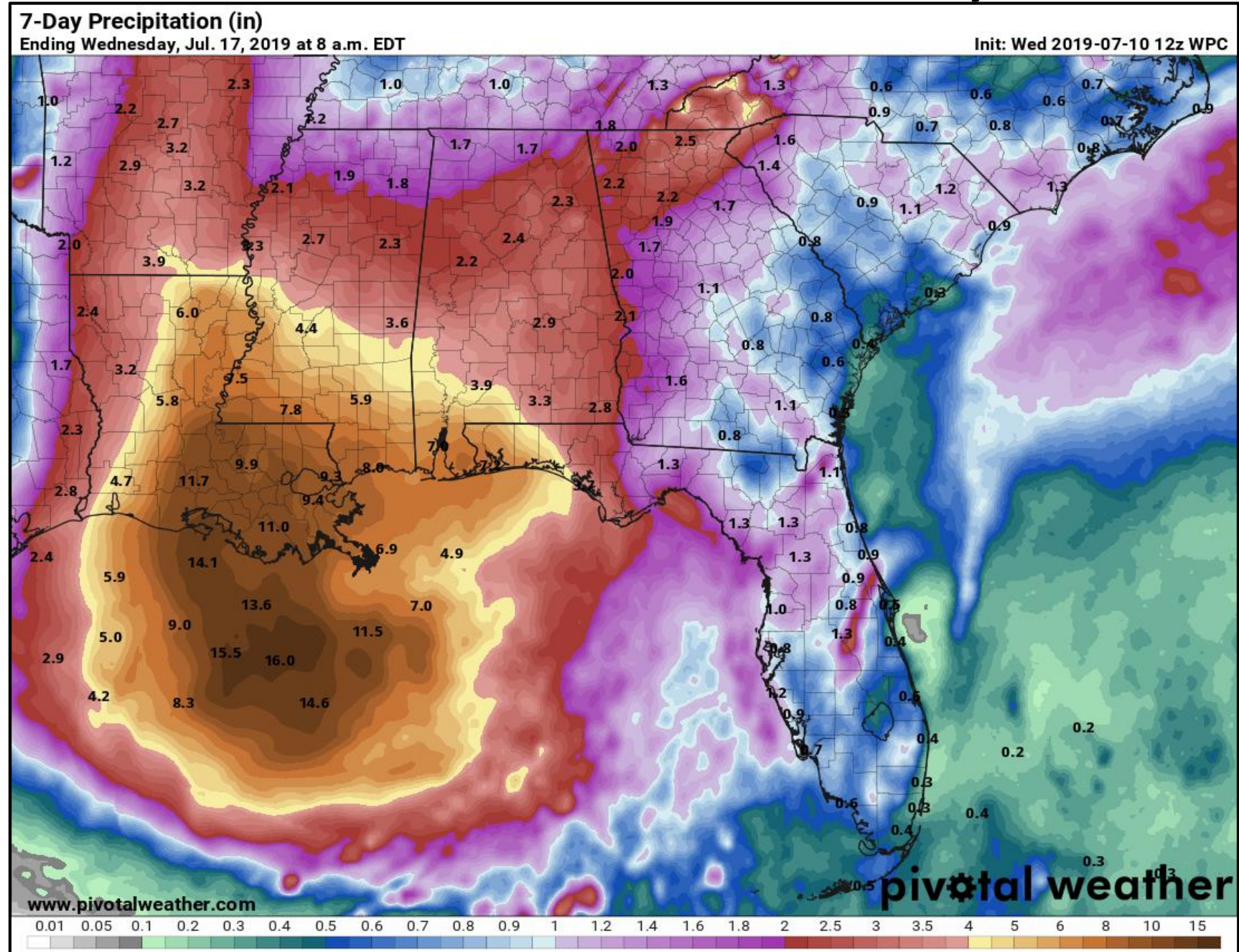
Cumulative Rainfall Total Next 7-Days

A widespread 1-3" is expected across much of the state this week. Rainfall totals of 3-6" are possible in the Panhandle through this weekend.

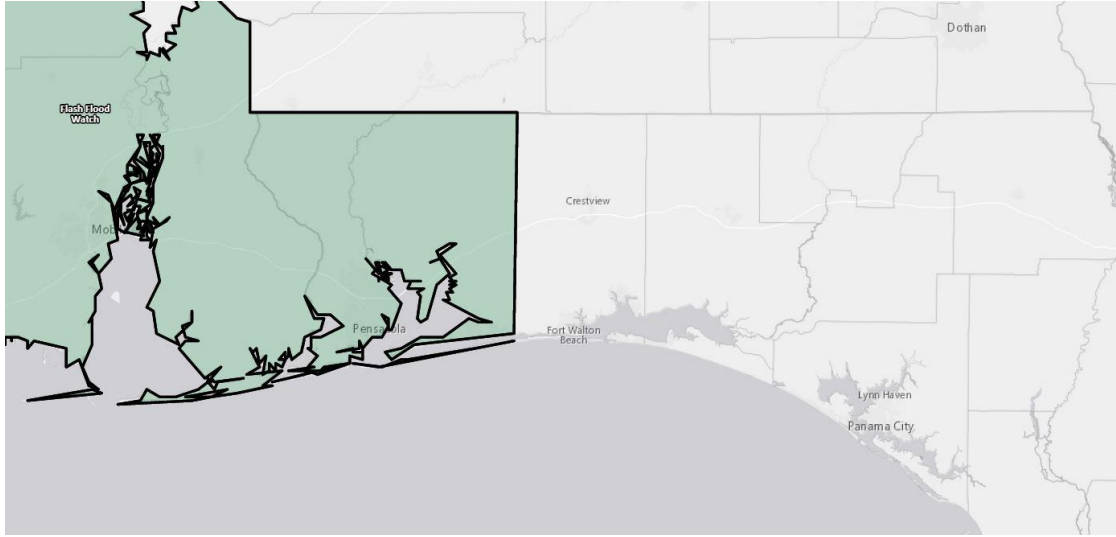
***THIS DOES NOT INCLUDE LOCALLY HIGHER TOTALS* which could be as high as 10+" in the western Panhandle.**

The greatest rainfall threat will vary from day to day and location to location depending on the exact development of the system.

All Florida rivers are well below flood stage. Drought conditions continue across inland Northwest Florida.



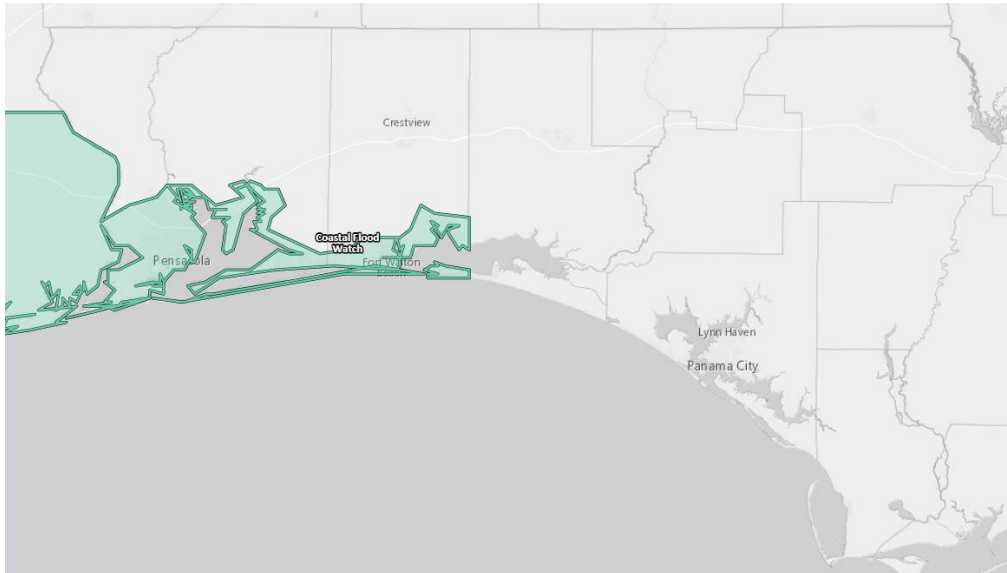
Flash Flood Watch In Effect Thursday PM – Sunday PM



- * Escambia and Santa Rosa County
- * Five to seven inches of rainfall forecast with local totals of 10 to 14 inches over a multi-day period lasting from Thursday night and into the late weekend.

[More Details Click Here](#)

Coastal Flood Watch In Effect Thursday PM – Sunday PM



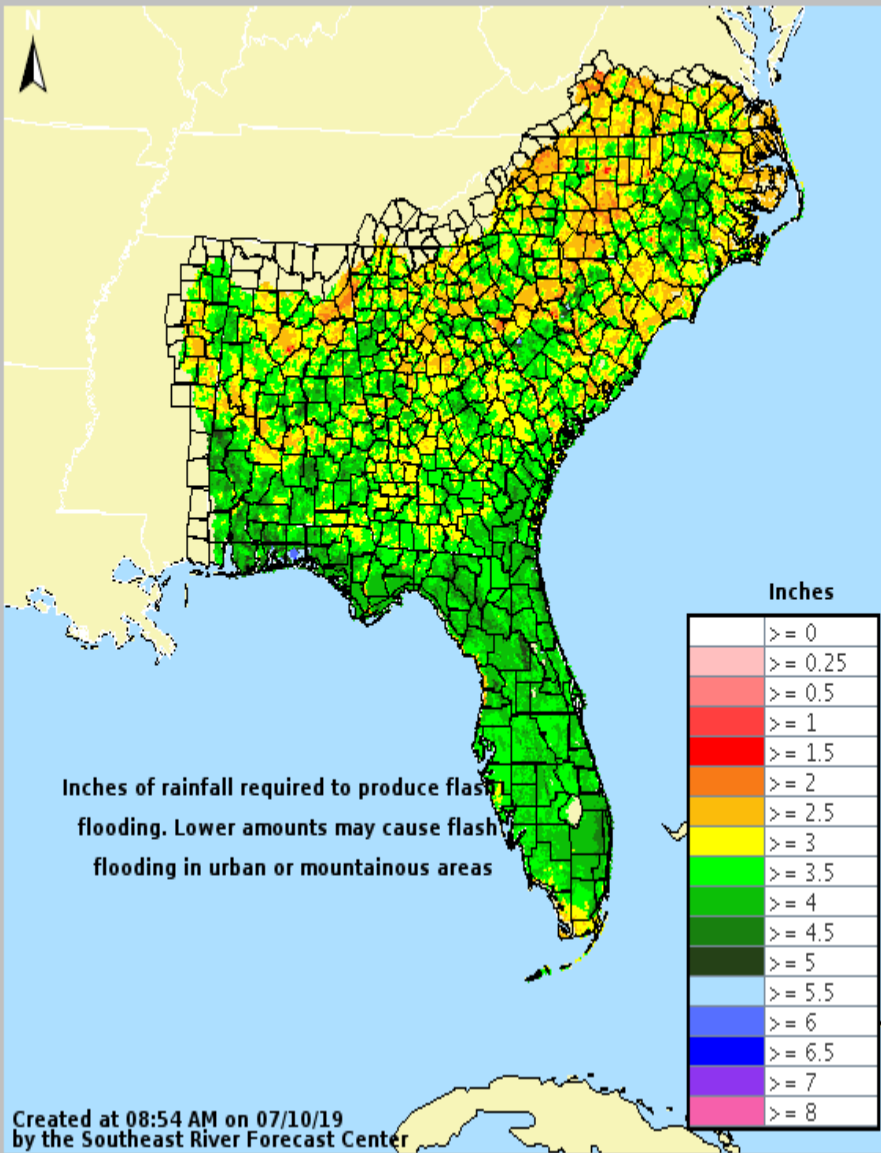
- * Coastal Escambia, Santa Rosa, and Okaloosa County
- * Tides may run up to 3 feet above normal Thursday night through the late weekend, especially at high tide mid-mornings.
- * Wave and surf 5-8'

[More Details Click Here](#)



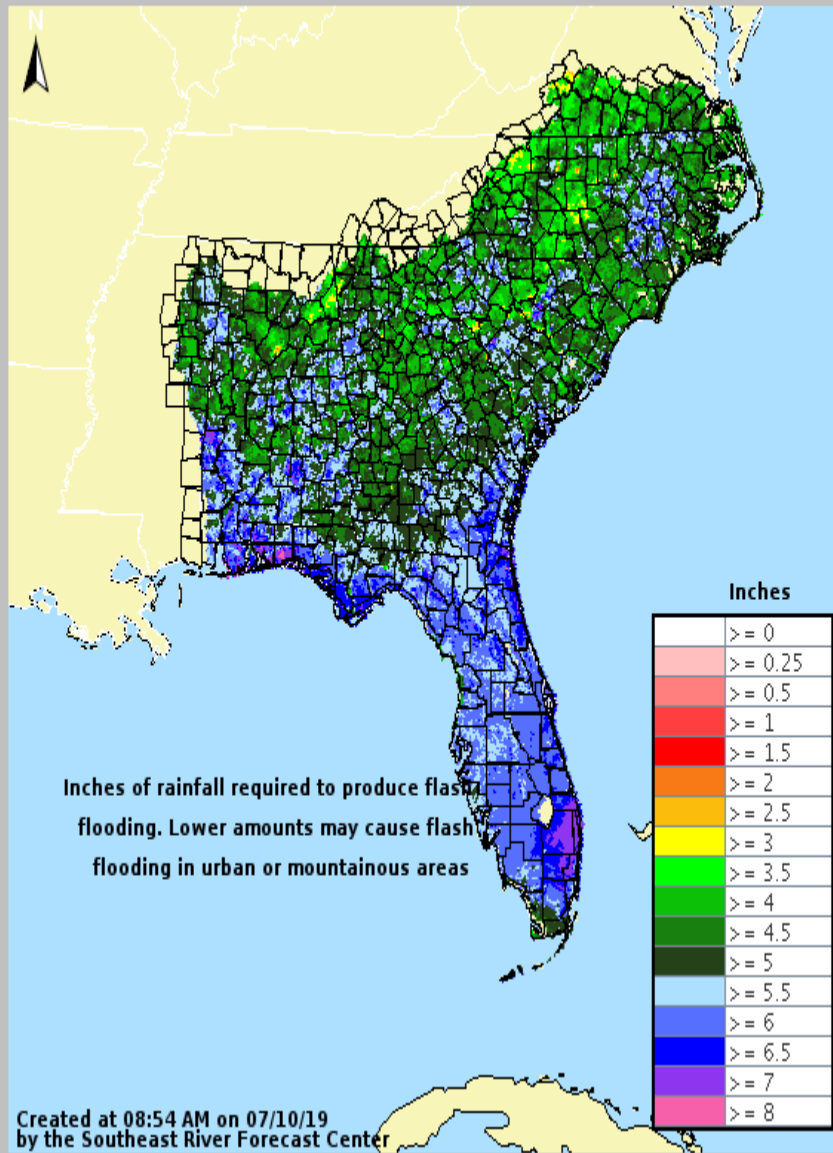
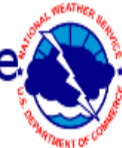
3-hr Flash Flood Guidance

Valid: 07/10/2019 @ 08:54 AM



12-hr Flash Flood Guidance

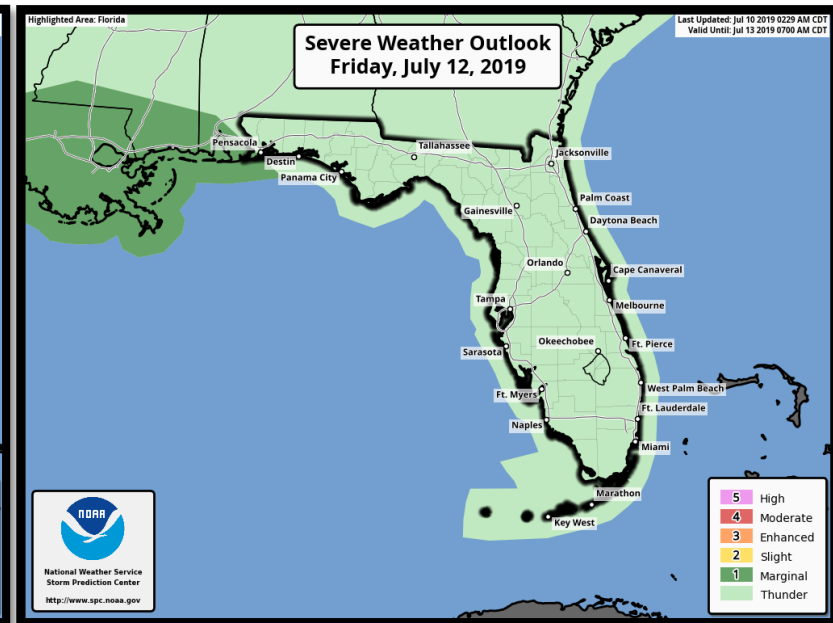
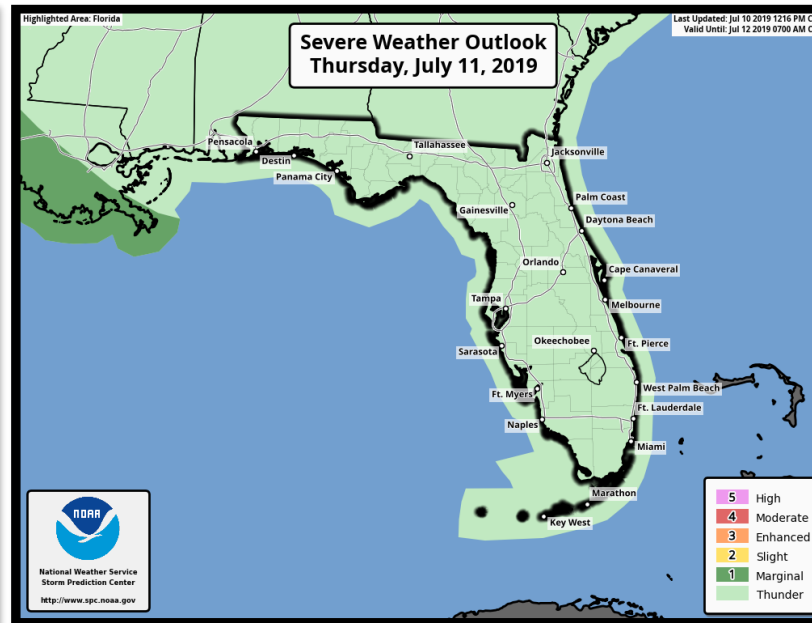
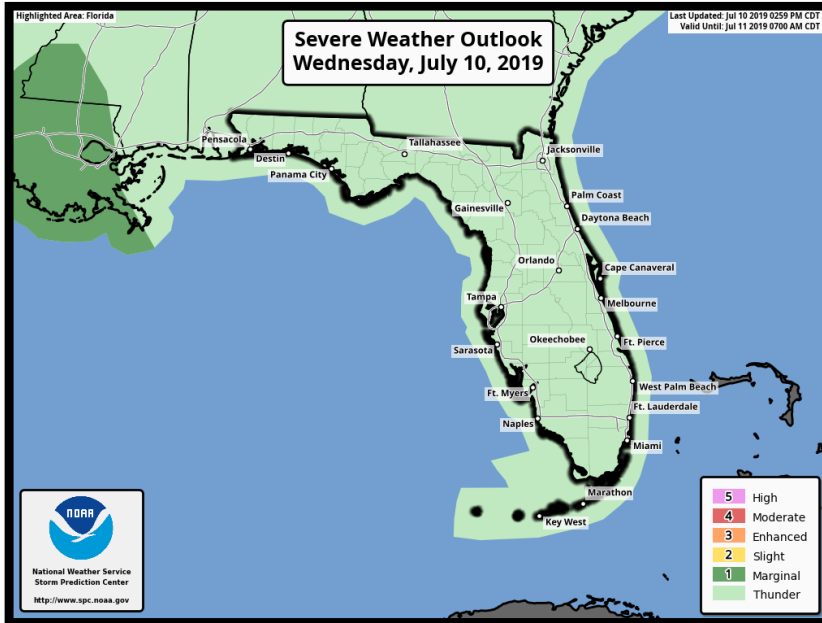
Valid: 07/10/2019 @ 08:54 AM



Flash Flood Potential Markers

- In general, flash flooding could occur in the Panhandle if heavy rain in excess of 4-6" occurs in a short amount of time or 6-8" within a 24 hour period.
- The Peninsula is more vulnerable to flash flooding at this time and could take as little as 3-5" to produce issues.

Forecast Severe Weather Risk – Wednesday-Saturday



Tonight

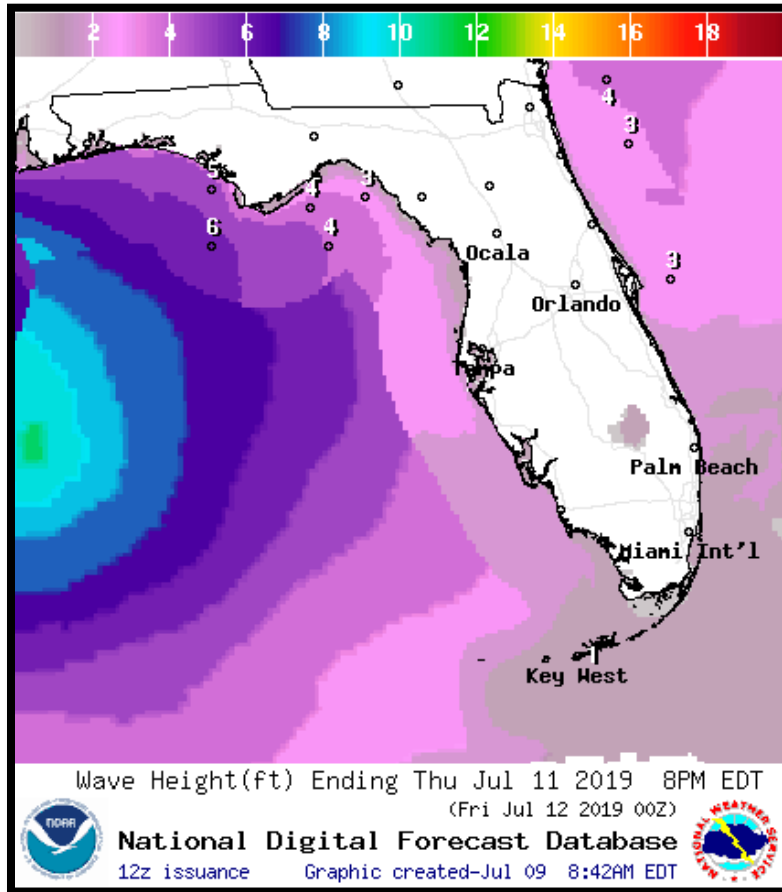
Thursday

Friday

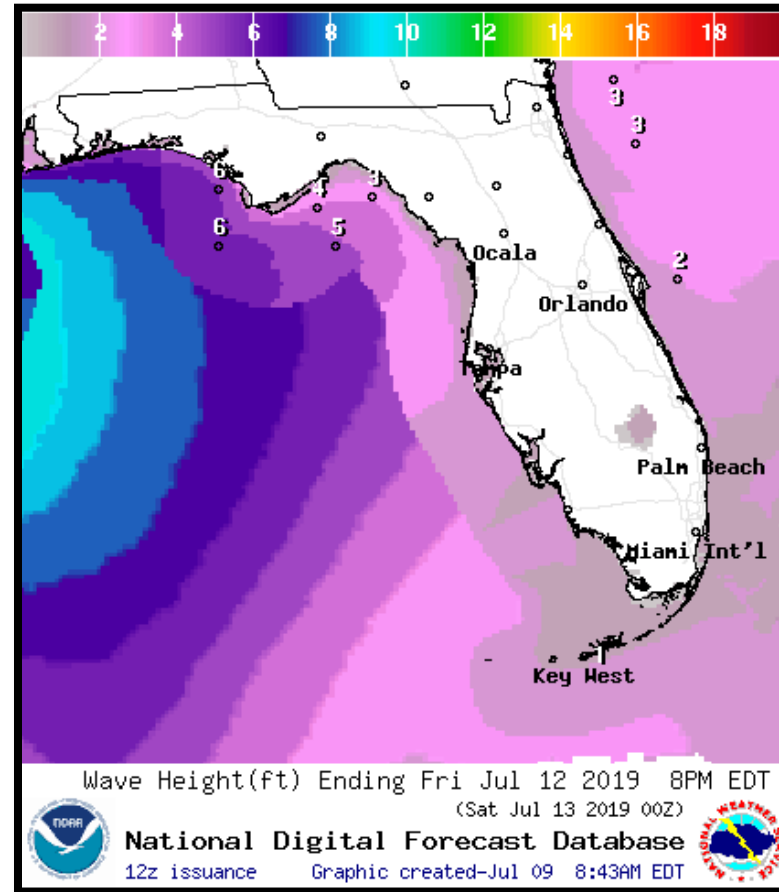
5	High
4	Moderate
3	Enhanced
2	Slight
1	Marginal
	Thunder

There is a Marginal Risk of severe weather late in the week along the coast of the western Panhandle. Isolated tornadoes/waterspouts will be possible in the outer bands of the system. Even outside of the outer bands, a couple severe thunderstorms may be possible—typical of summertime storms

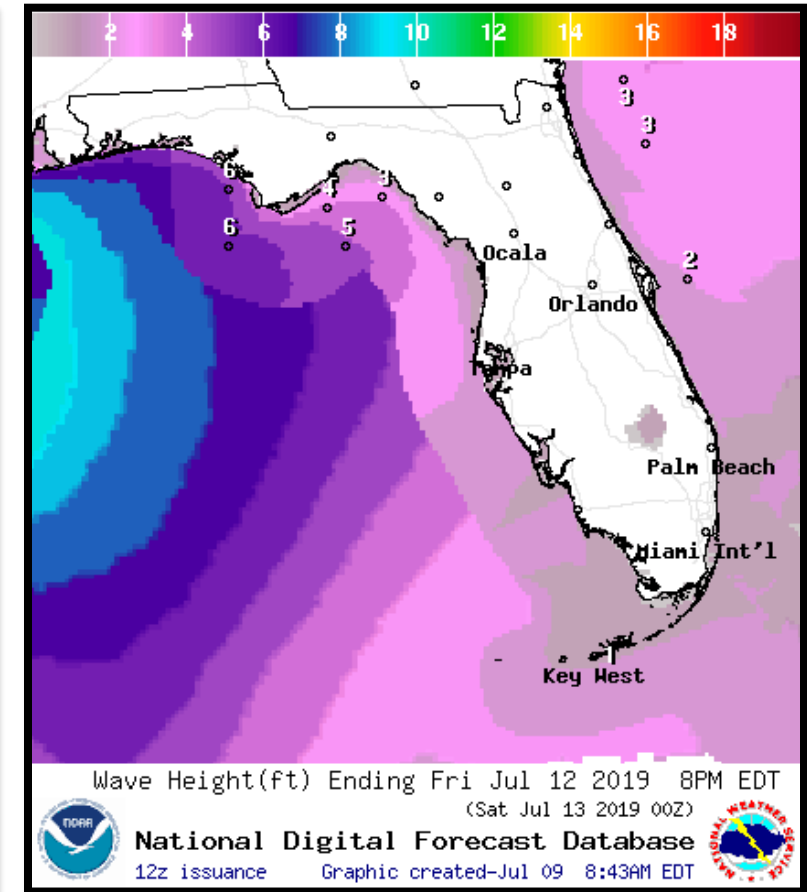
Forecast Wave Heights (feet) – Thursday-Saturday



Thursday



Friday

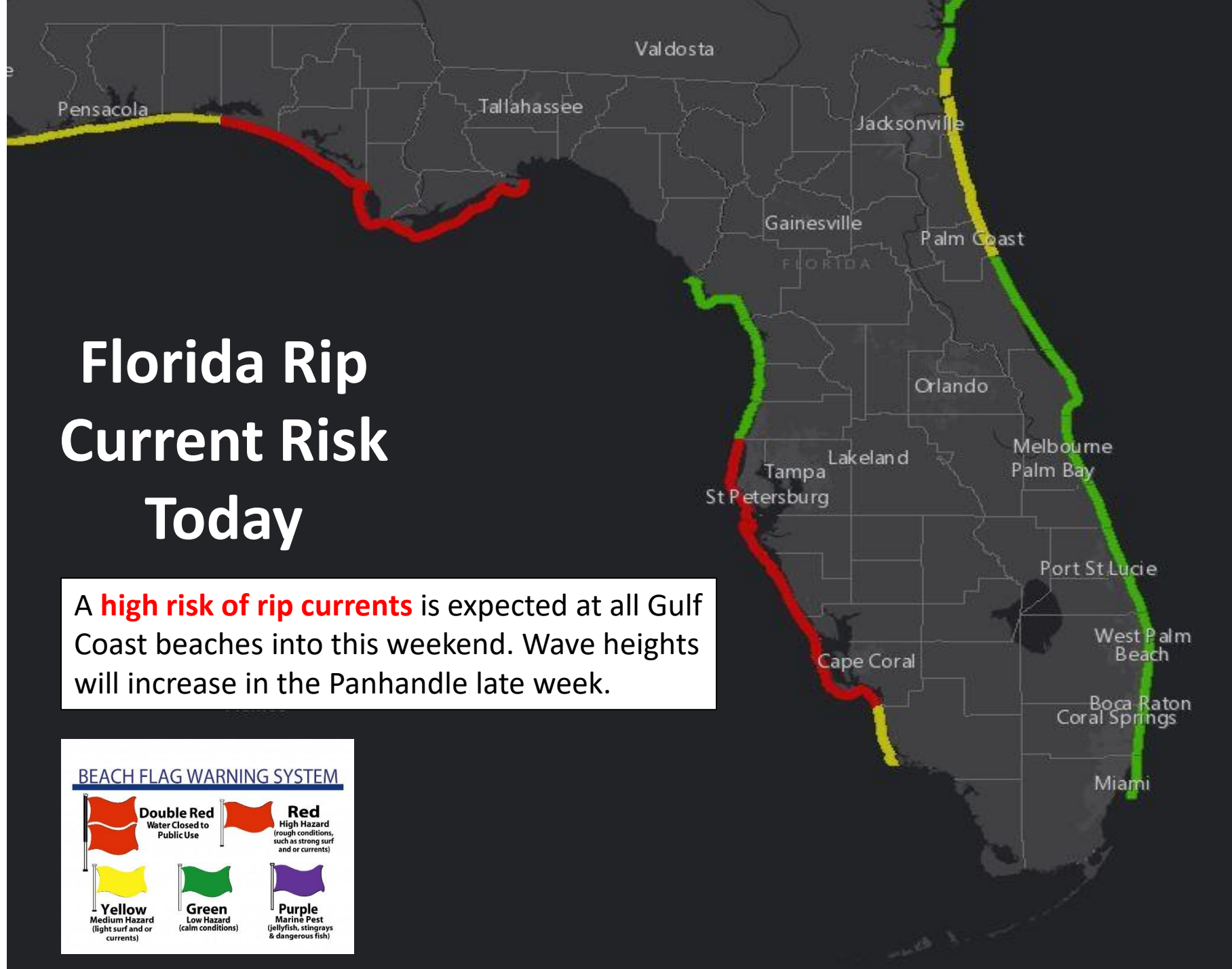


Saturday

High surf, a high risk of life-threatening rip currents, and some minor beach erosion will be likely in the Panhandle late week. With spring tidal cycles, some minor coastal flooding is possible near high tide in normally prone locations.

Florida Rip Current Risk Today

A **high risk of rip currents** is expected at all Gulf Coast beaches into this weekend. Wave heights will increase in the Panhandle late week.



Summary

- Potential Tropical Cyclone #2 is currently located about 160 miles south of Pensacola moving west-southwestward at 8 mph over the northern Gulf of Mexico.
- Maximum sustained winds are near 30 mph. Gradual organization of the system is expected over the next day or so and it could become a tropical depression late tonight or Thursday morning. Further strengthening into a tropical storm is expected on Thursday, then becoming a hurricane Friday or Saturday.
- While uncertainty remains (until this system has a defined center), models have come into better general agreement on the track of the system since yesterday.
- The system will continue moving westward to west-southwestward over the next 24 hours before turning westward Thursday night then northwestward Friday into the weekend, making landfall in eastern Texas or Louisiana.
- The next name on the list is Barry.
- There are no other areas of possible development in the Atlantic Basin for at least the next five days.

Florida Outlook:

- Scattered to numerous showers and thunderstorms are expected each day this week statewide.
- Widespread rainfall totals of 1-3" are forecast statewide, though rainfall totals of 3-6" are possible in the Panhandle. Localized totals of 10+" are possible in some spots of the western Panhandle. Flash Flood Watches are in effect for the far western Panhandle later this week.
- An isolated case of flash flooding will be possible in the western Panhandle, particularly in urban areas with brief periods of ponding of water on roadways, especially where storms repeatedly move over the same locations
- Isolated tornadoes will be possible across the Panhandle beginning Friday. There will be an increased threat of waterspouts all week.
- Dangerous rip currents, high surf, and minor coastal flooding will be possible along the Panhandle coast over the next several days. Coastal Flood Watches and High Surf Advisories are in effect for parts of the Panhandle.

The next briefing packet will be issued Thursday morning. For the latest information on the tropics, please visit the National Hurricane Center website at www.hurricanes.gov.



TROPICAL UPDATE



Created by:

Cameron Young, Assistant State Meteorologist

Cameron.Young@em.myflorida.com

Michael Spagnolo, Deputy State Meteorologist

Michael.Spagnolo@em.myflorida.com

State Meteorological Support Unit

Florida Division of Emergency Management

Users wishing to subscribe (approval pending) to this distribution list, register at https://public.govdelivery.com/accounts/FLDEM/subscriber/new?topic_id=SERT_Met_Tropics.

Other reports available for subscription are available at <https://public.govdelivery.com/accounts/FLDEM/subscriber/new?preferences=true>