



TROPICAL UPDATE



11 AM EDT

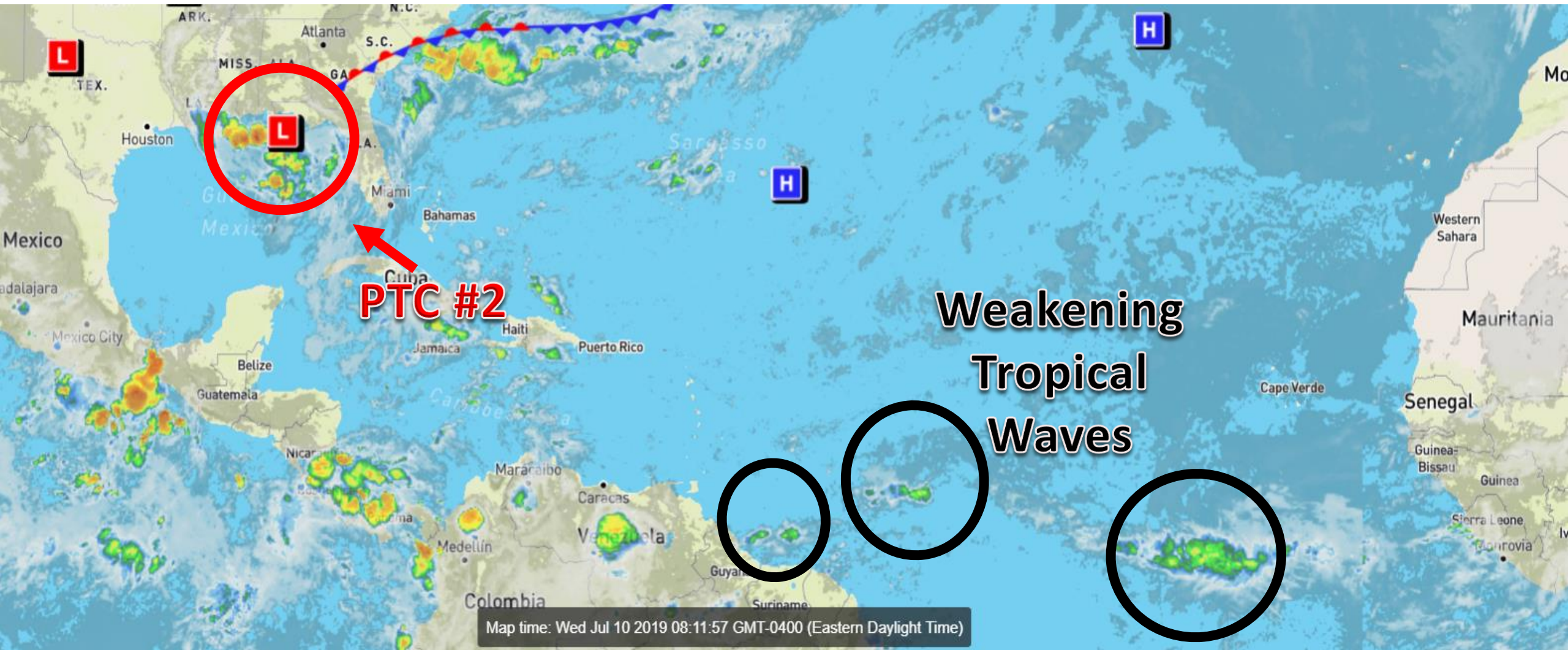
Wednesday, July 10, 2019

Potential Tropical Cyclone #2

This update is intended for government and emergency response officials, and is provided for informational and situational awareness purposes only. Forecast conditions are subject to change based on a variety of environmental factors. For additional information, or for any life safety concerns with an active weather event please contact your County Emergency Management or Public Safety Office, local National Weather Service forecast office, or visit the National Hurricane Center website at www.hurricanes.gov.

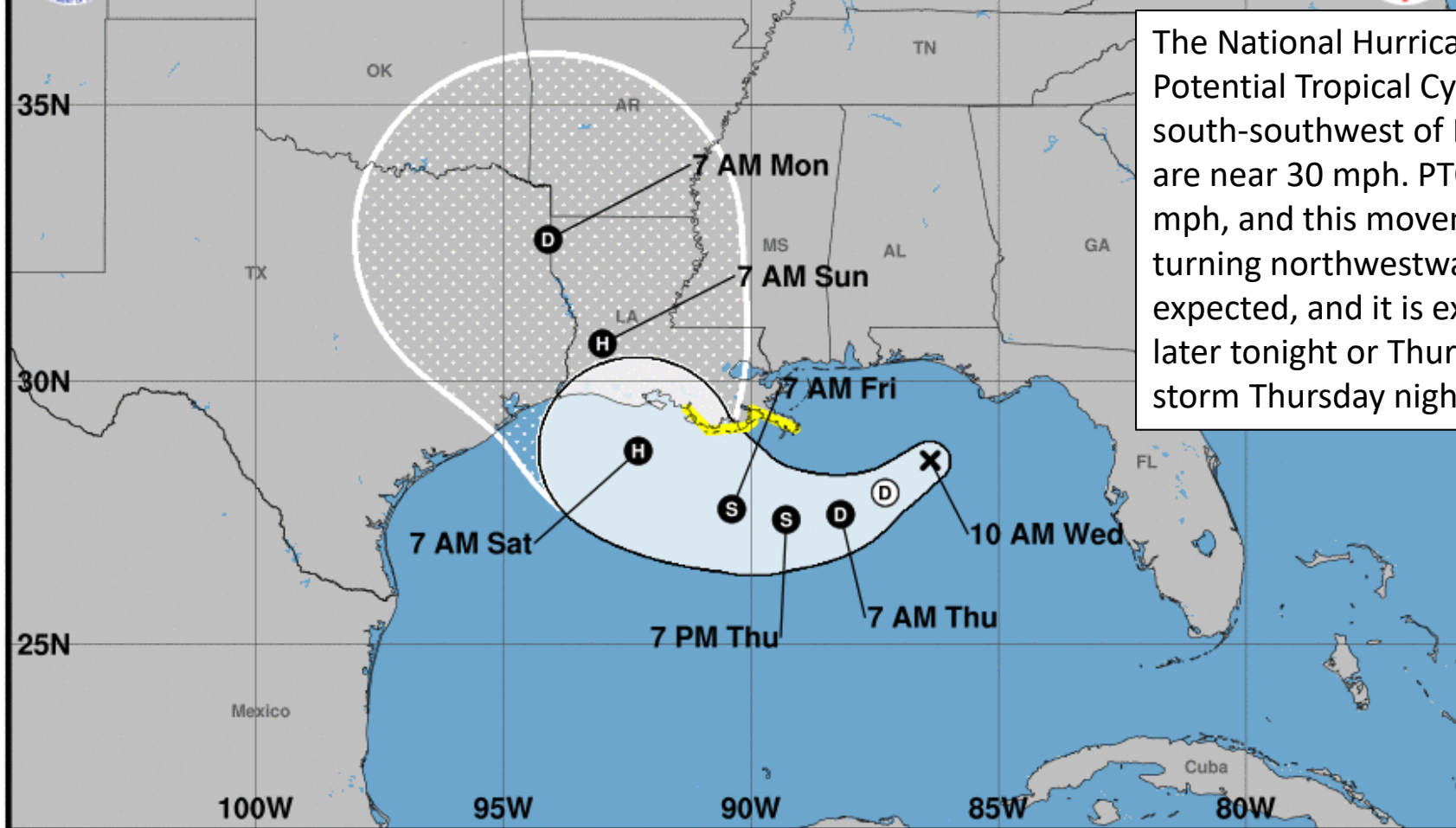
Atlantic Basin Satellite Image

Chance of development: — None — Low — Medium — High





Note: The cone contains the probable path of the storm center but does not show the size of the storm. Hazardous conditions can occur outside of the cone.



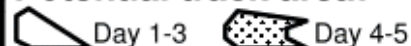
The National Hurricane Center has initiated advisories on Potential Tropical Cyclone #2, located roughly 100 miles south-southwest of Panama City. Maximum sustained winds are near 30 mph. PTC #2 is moving west-southwestward at 8 mph, and this movement will continue into Thursday before turning northwestward on Friday. Gradual strengthening is expected, and it is expected to become a tropical depression later tonight or Thursday. PTC #2 could become a tropical storm Thursday night and a hurricane late Friday or Saturday.

Potential Tropical Cyclone Two
Wednesday July 10, 2019
10 AM CDT Advisory 1
NWS National Hurricane Center

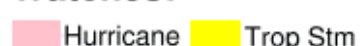
Current information: X
Center location 28.5 N 86.4 W
Maximum sustained wind 30 mph
Movement WSW at 8 mph

Forecast positions:
● Tropical Cyclone ○ Post/Potential TC
Sustained winds: D < 39 mph
S 39-73 mph H 74-110 mph M > 110 mph

Potential track area:



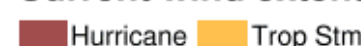
Watches:



Warnings:



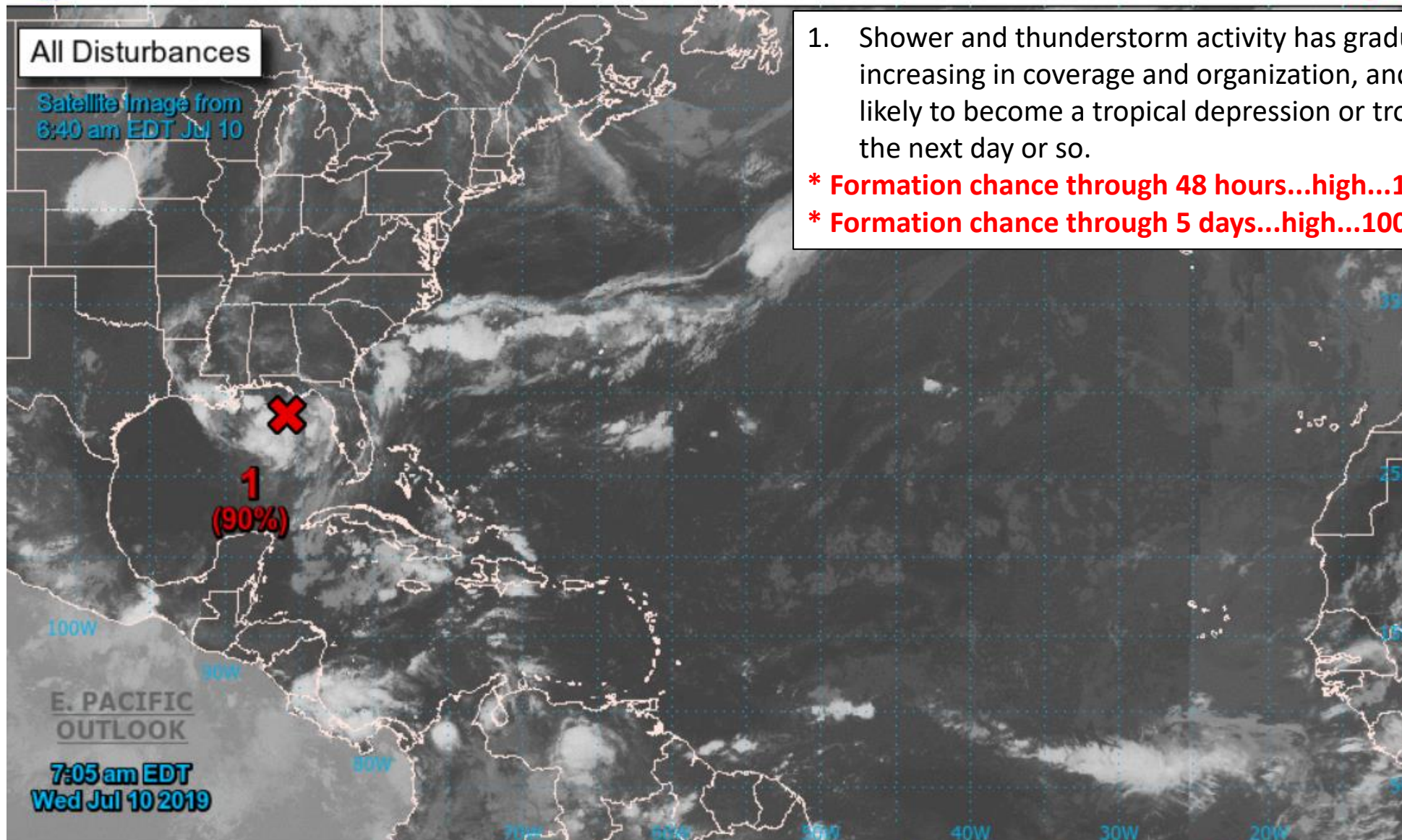
Current wind extent:





Two-Day Graphical Tropical Weather Outlook

National Hurricane Center Miami, Florida



1. Shower and thunderstorm activity has gradually been increasing in coverage and organization, and the low is likely to become a tropical depression or tropical storm in the next day or so.

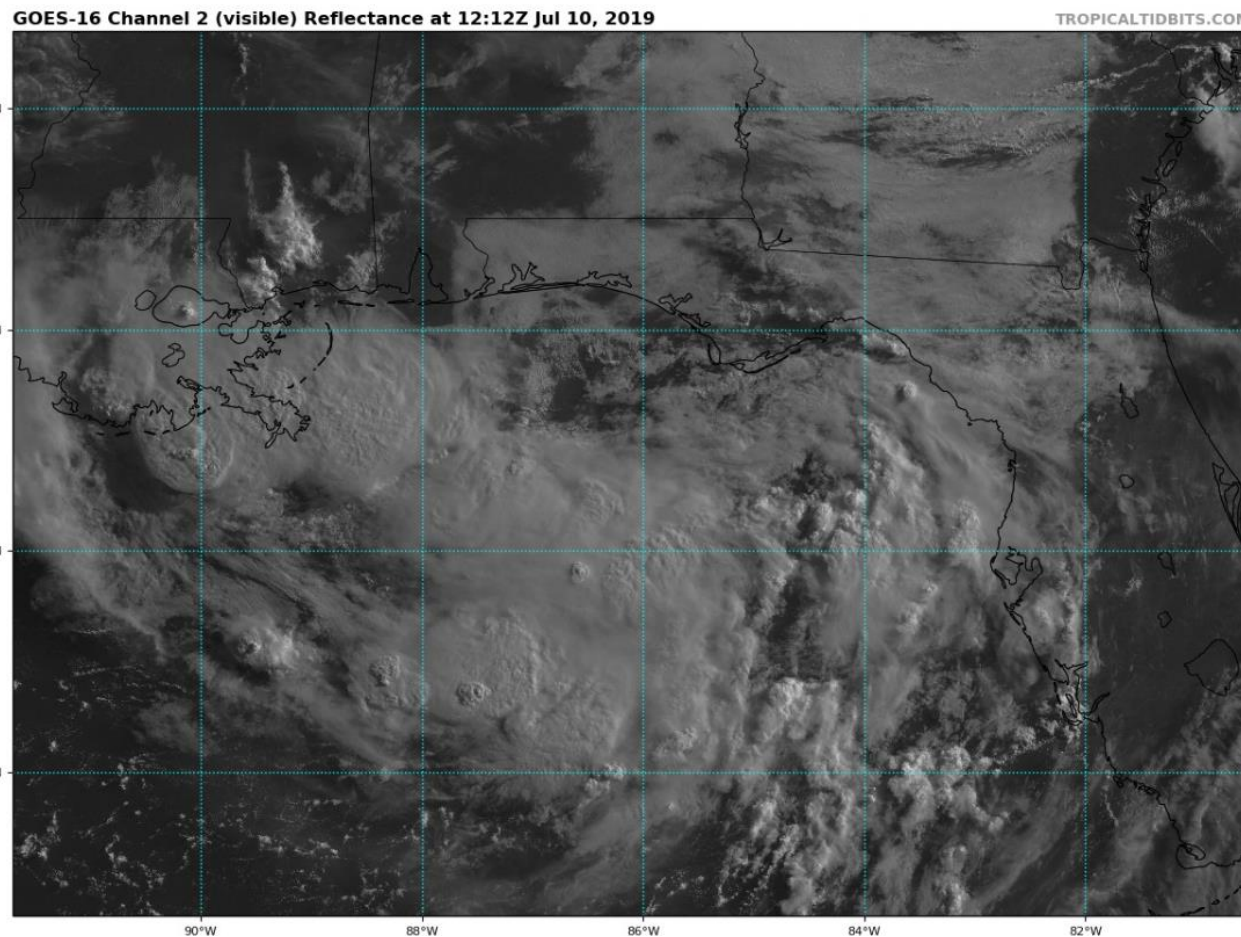
* Formation chance through 48 hours...high...100 percent.

* Formation chance through 5 days...high...100 percent.

Current Disturbances and Two-Day Cyclone Formation Chance: ✕ < 40% ✕ 40-60% ✕ > 60%

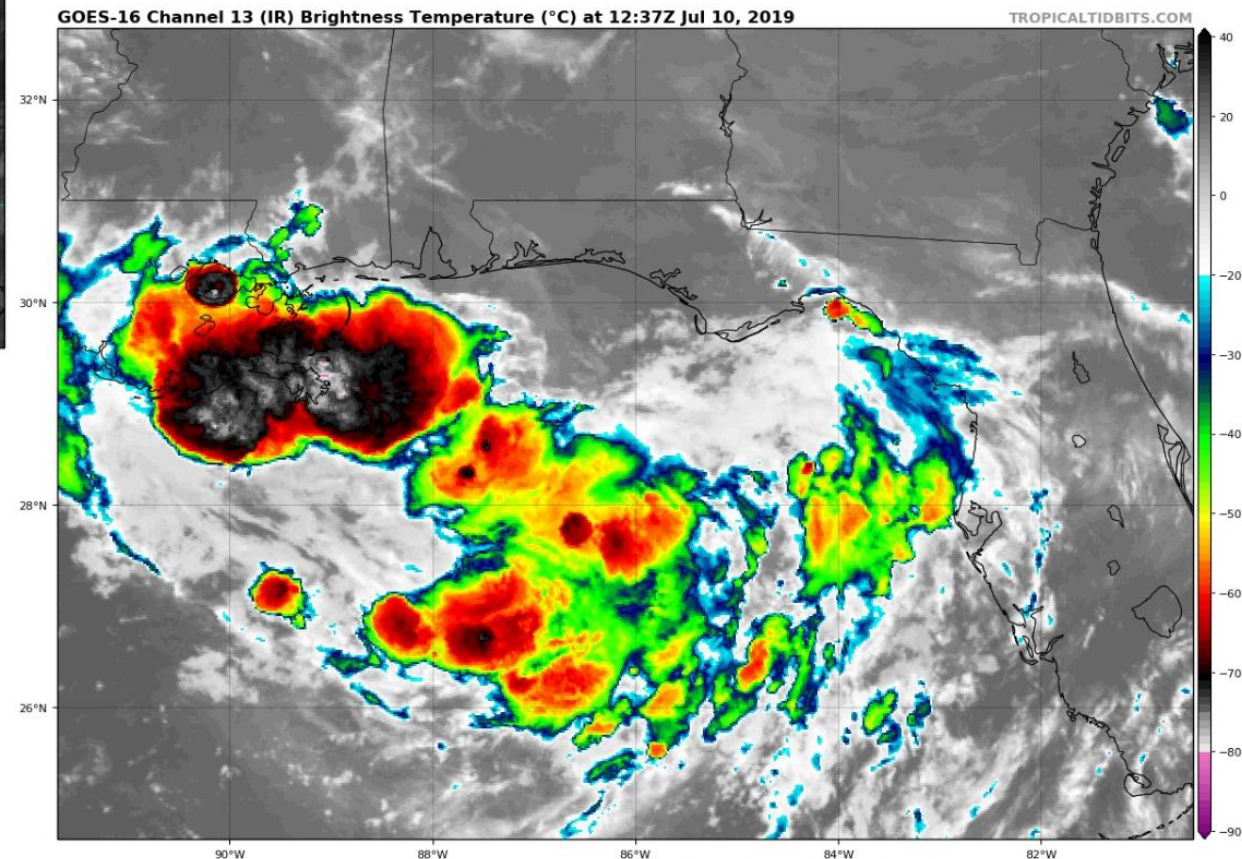
Tropical or Sub-Tropical Cyclone: ○ Depression 🌀 Storm 🌀 Hurricane

⊗ Post-Tropical Cyclone or Remnants

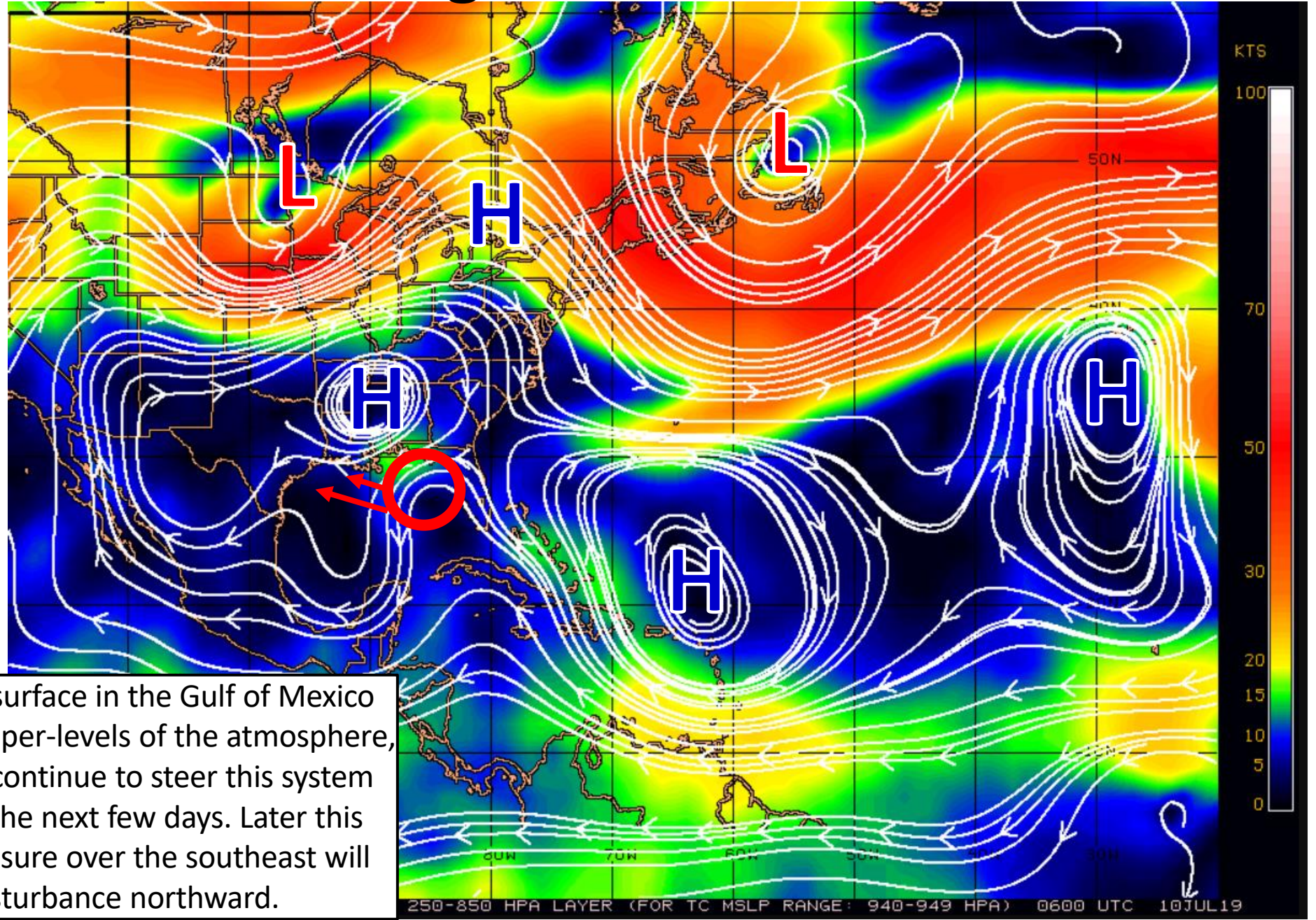


Potential Tropical Cyclone #2 is about 100 miles south of Panama City. It remains somewhat disorganized, but additional organization is expected later today or tonight.

PTC #2 Satellite Images

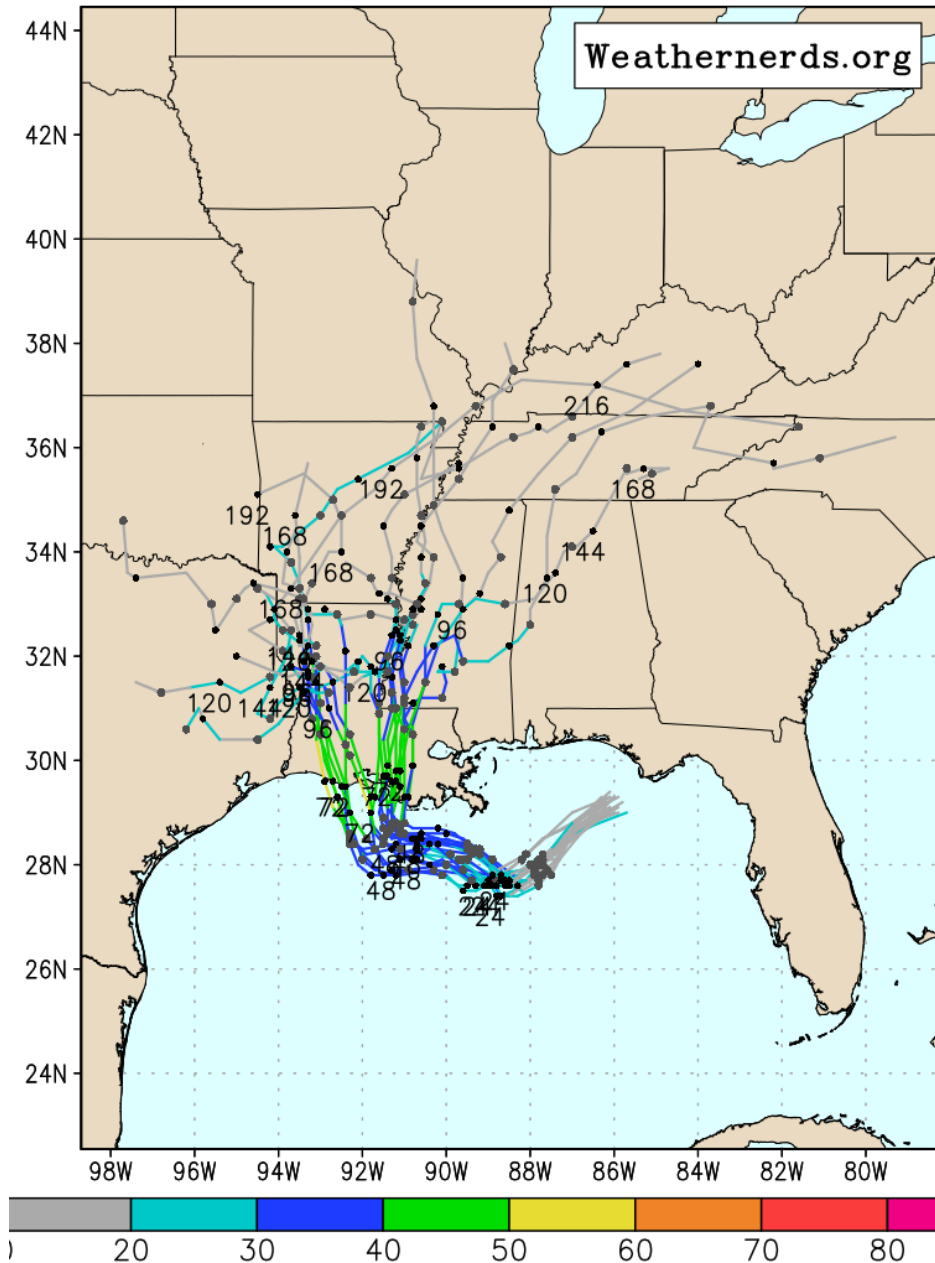


Steering Currents



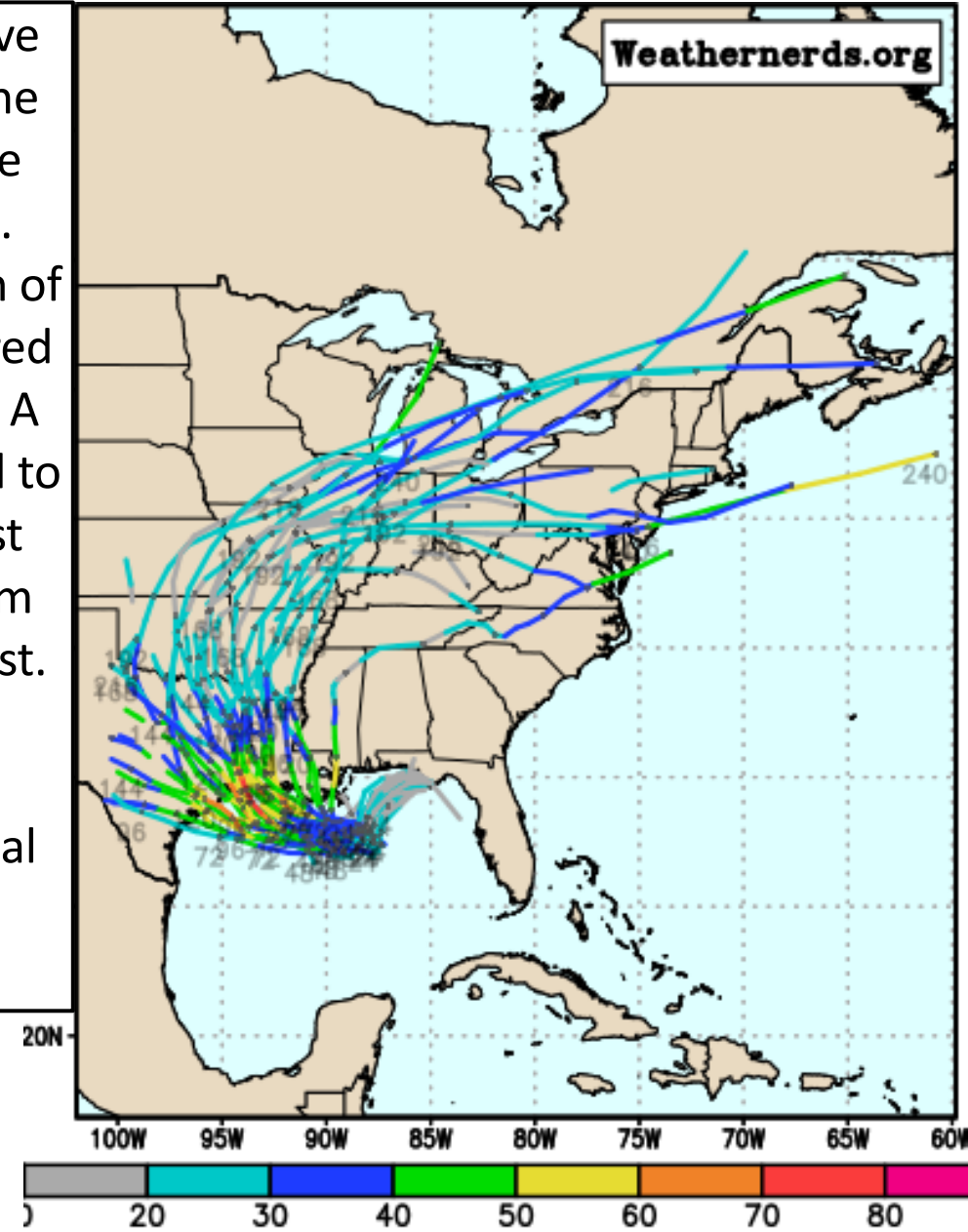
Steering currents near the surface in the Gulf of Mexico are weak. However, in the upper-levels of the atmosphere, areas of high pressure will continue to steer this system west across the Gulf over the next few days. Later this week, the area of high pressure over the southeast will help to guide the disturbance northward.

Current Forecast Ensemble Model Guidance

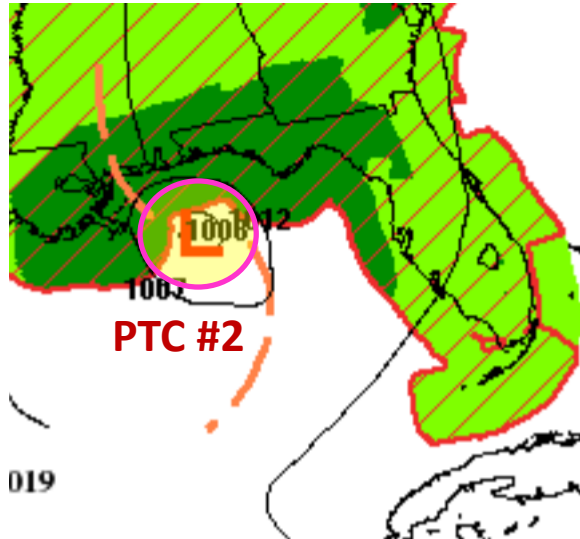


PTC #2 is expected to move west to southwest over the next couple days over the northern Gulf of Mexico. Depending on the strength of the system, it will be steered by different mechanisms. A weaker system would tend to make landfall further east whereas a stronger system will likely head farther west.

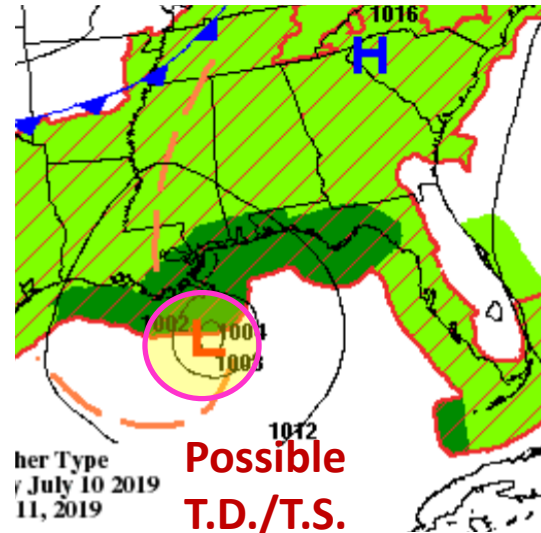
However, there is still uncertainty in the eventual track or intensity of the system.



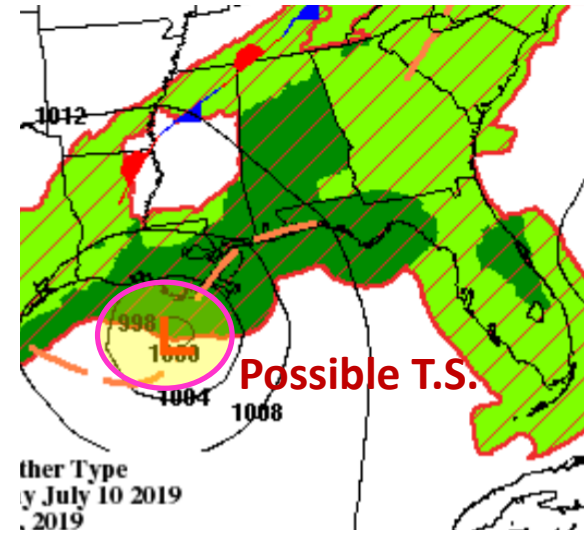
Forecast Weather Maps (fronts)



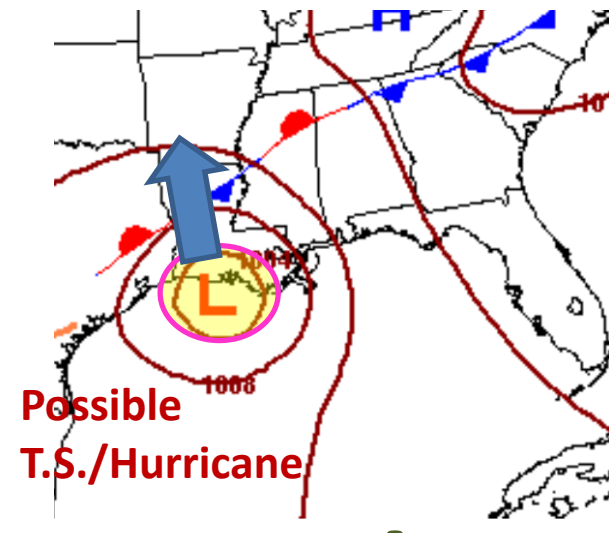
Wednesday



Thursday



Friday

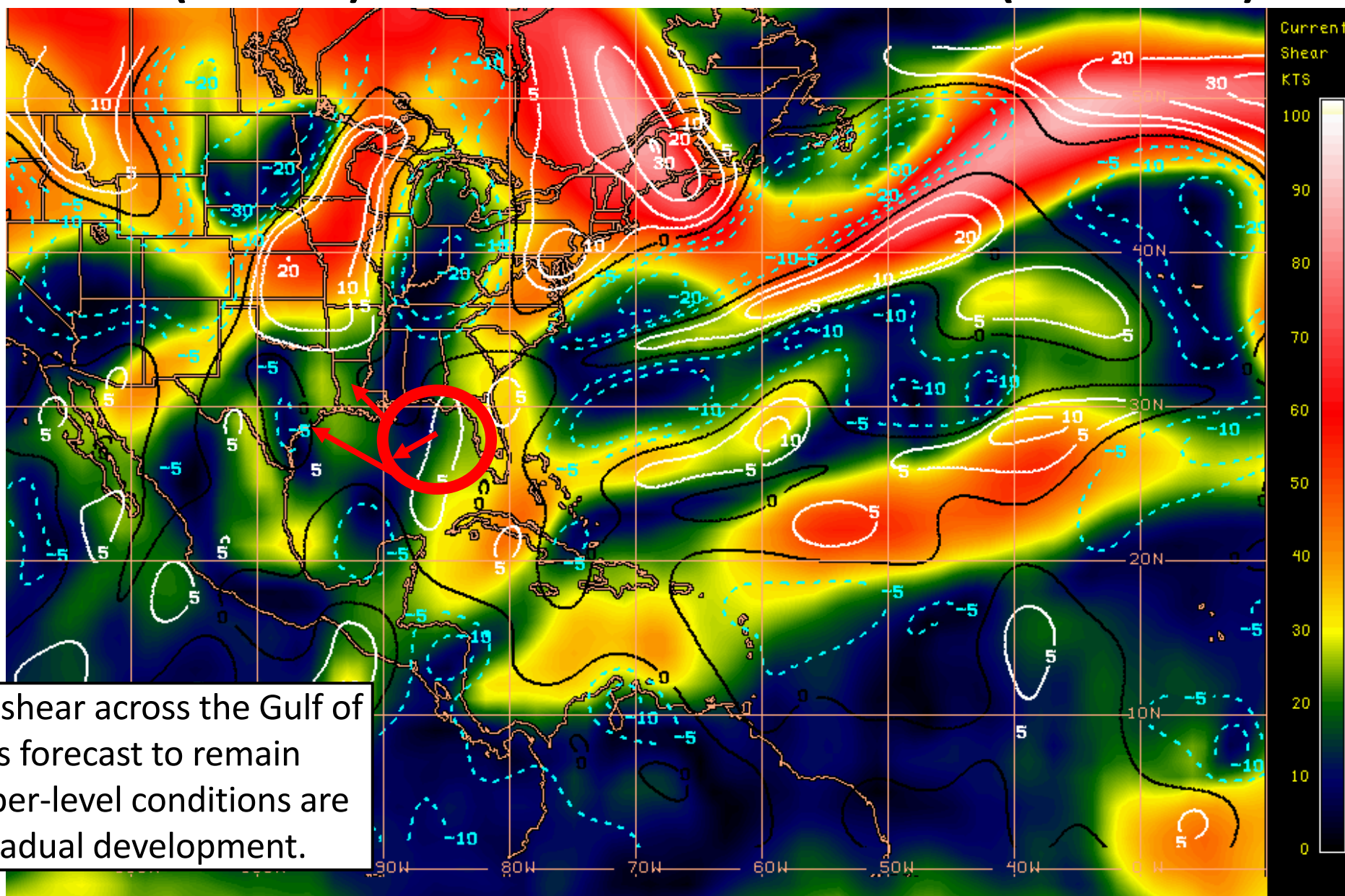


Saturday

Potential Tropical Cyclone #2 over the northern Gulf of Mexico will gradually become better organized, and may become a tropical depression or tropical storm. PTC #2 (eventual Barry) will eventually drift northwest into the northern Gulf Coast as another cold front approaches over the weekend. **Confidence is increasing on the system moving further west towards Louisiana.**

The best chance of heavy rainfall will be in the Panhandle and immediate West Coast today. Locally heavy rainfall will remain possible across the Panhandle through later this week in any outer bands. If the system would move further east, say into southeast Louisiana, rain chances will remain elevated in the western Panhandle into this weekend.

Wind Shear (shaded) and Wind Shear Tendencies (contoured)



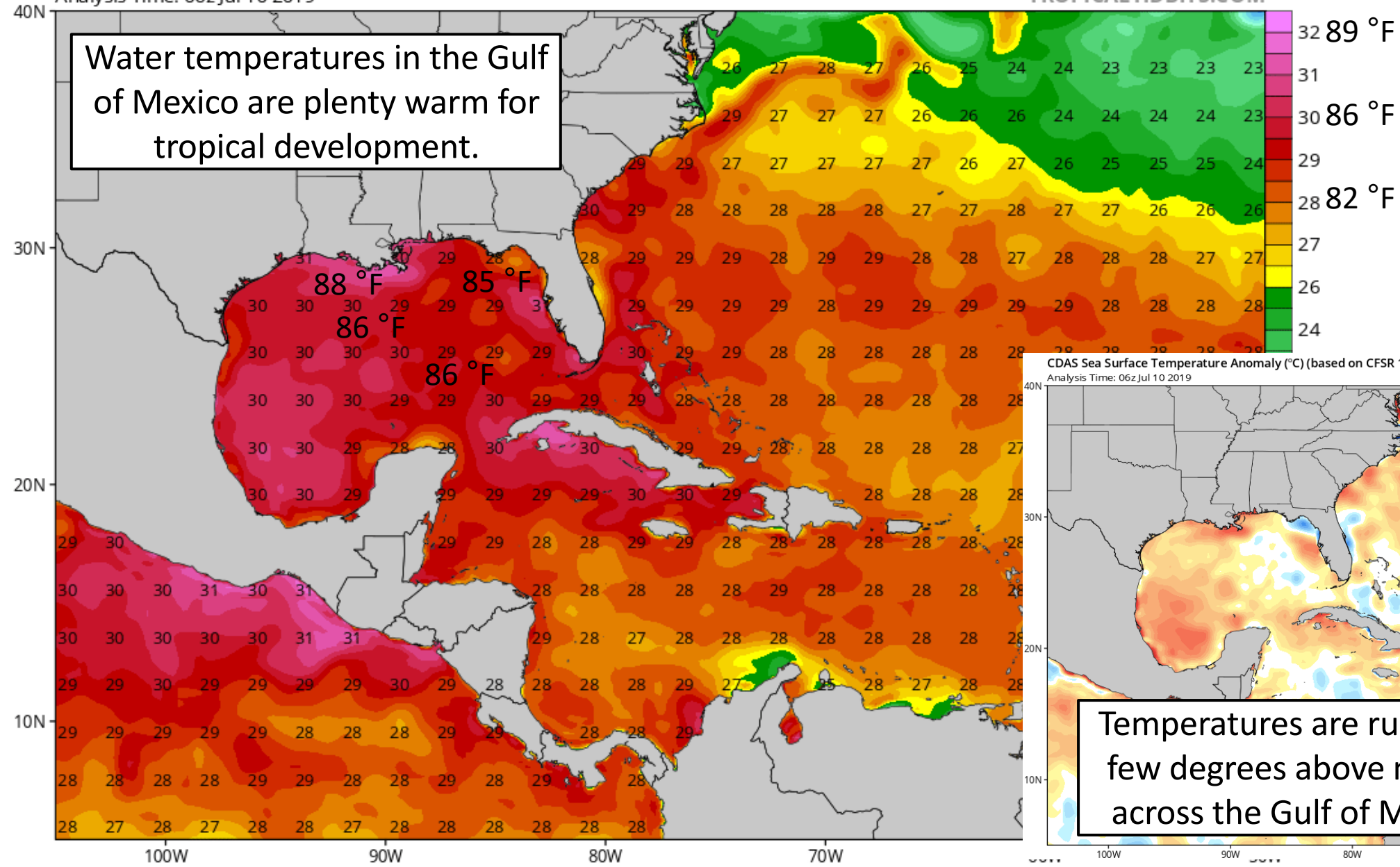
Current Sea Surface Temperatures

CDAS Sea Surface Temperature (°C)

Analysis Time: 06z Jul 10 2019

TROPICALTIDBITS.COM

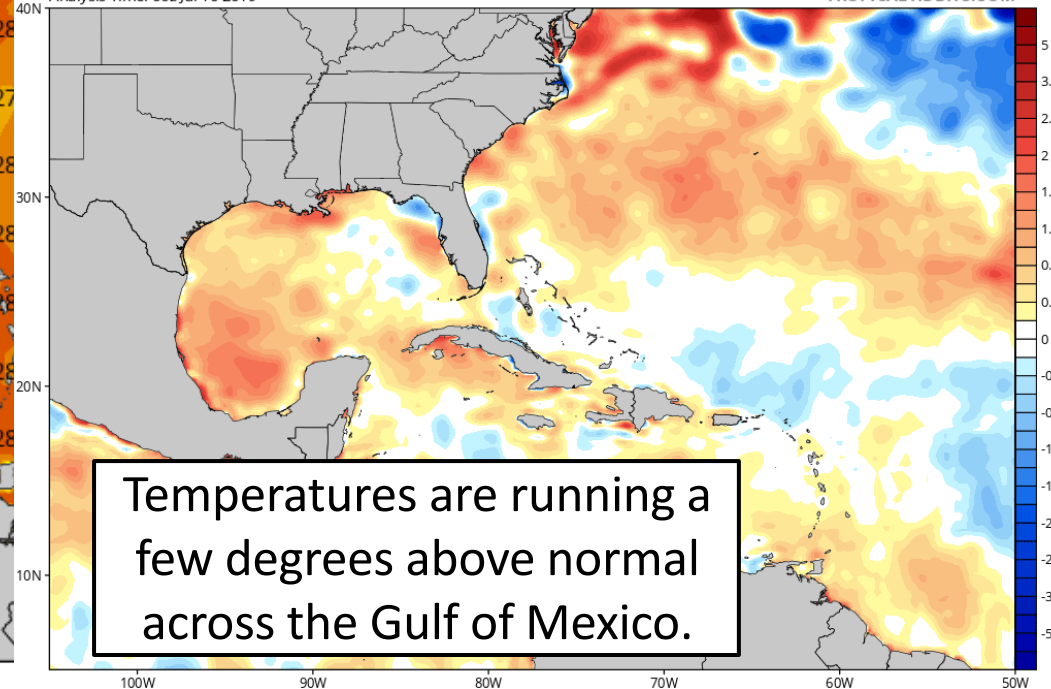
Water temperatures in the Gulf of Mexico are plenty warm for tropical development.



CDAS Sea Surface Temperature Anomaly (°C) (based on CFSR 1981-2010 Climatology)

Analysis Time: 06z Jul 10 2019

TROPICALTIDBITS.COM



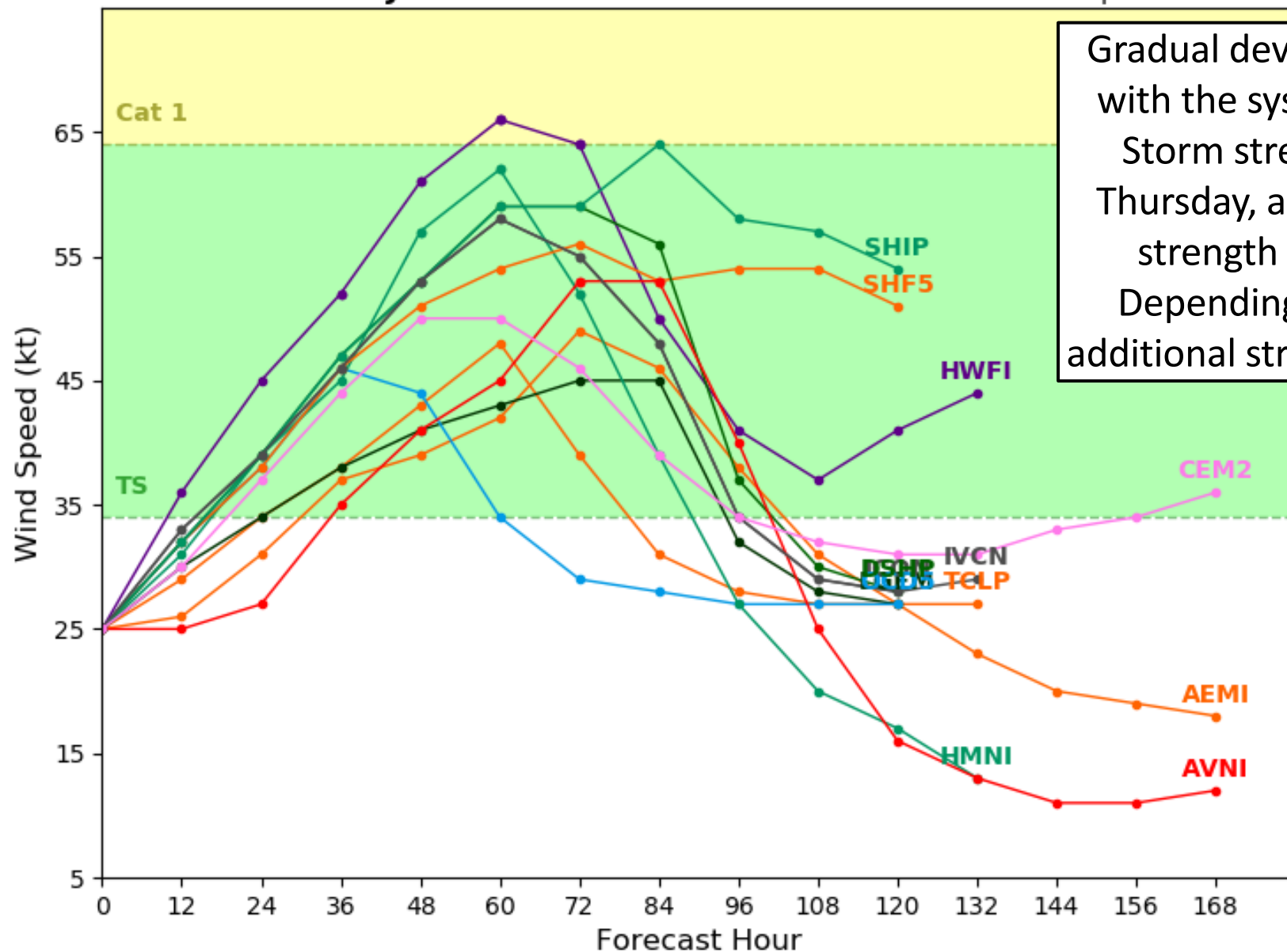
Temperatures are running a few degrees above normal across the Gulf of Mexico.

Current Model Intensity Forecast

Invest 92L Model Intensity Guidance

Initialized at 12z Jul 10 2019

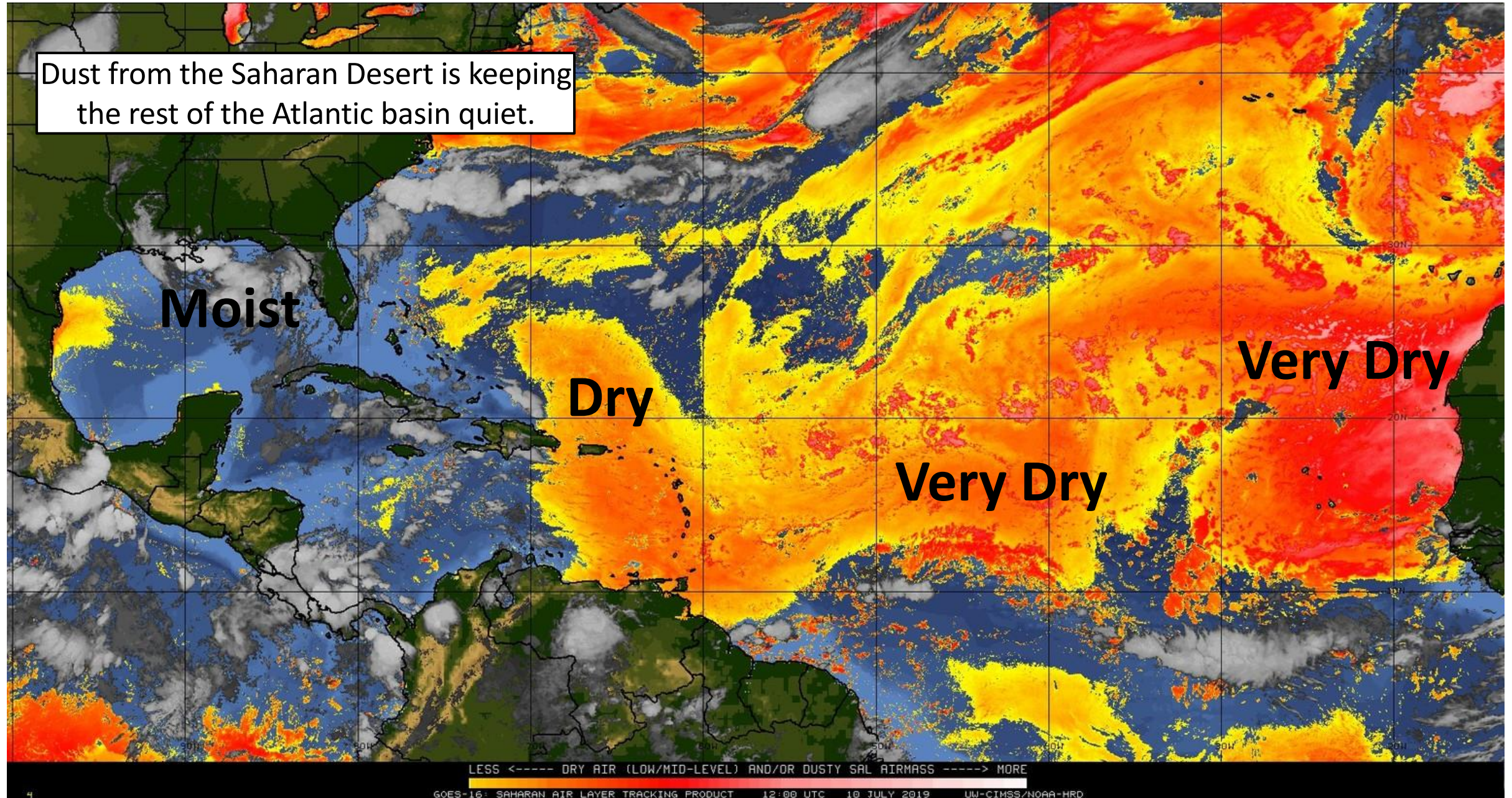
Levi Cowan - tropicaltidbits.com



Gradual development is expected with the system nearing Tropical Storm strength most likely on Thursday, and nearing Hurricane strength Friday or Saturday. Depending on the exact track, additional strengthening is possible.

Dry Air & Saharan Dust

Dust from the Saharan Desert is keeping the rest of the Atlantic basin quiet.



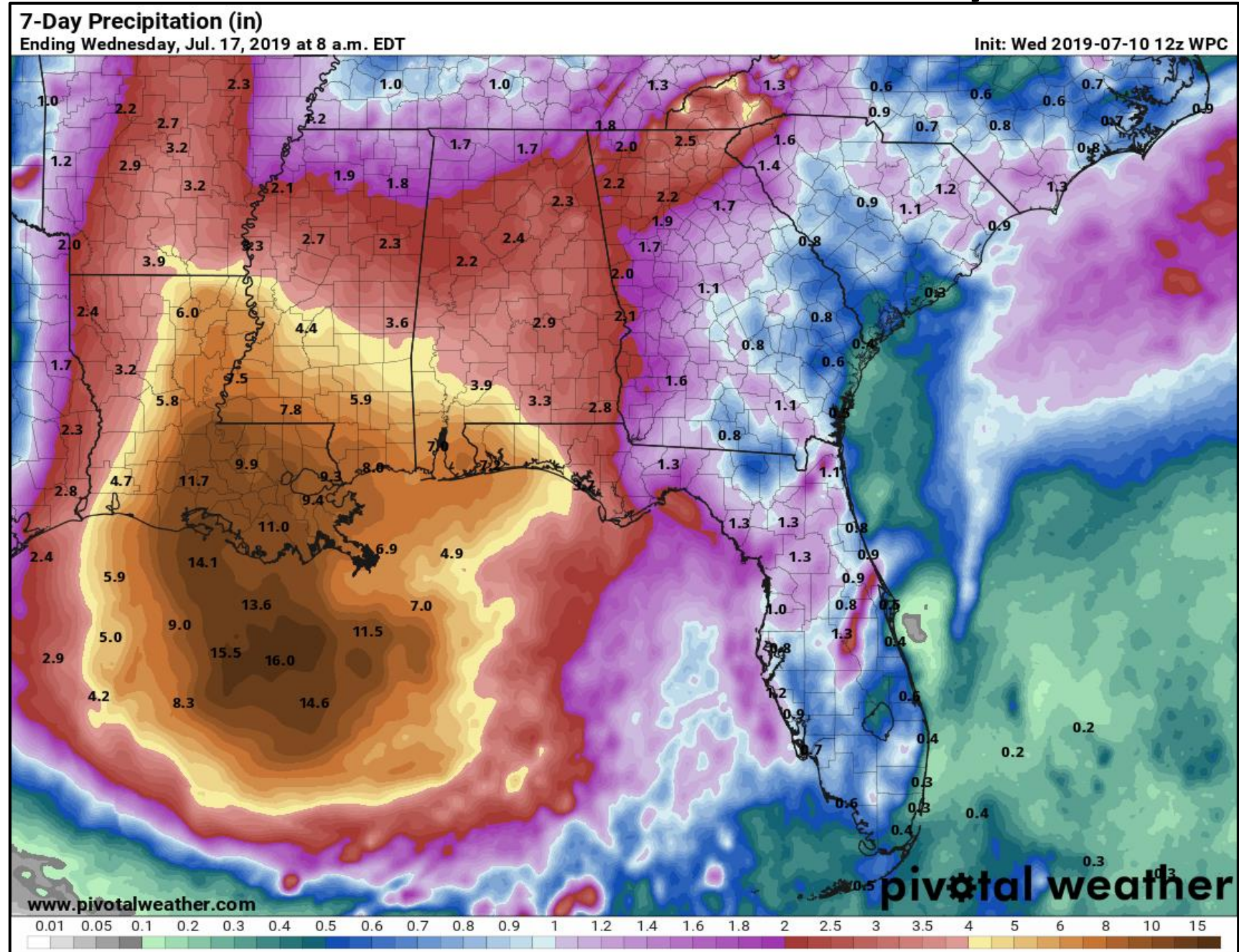
Cumulative Rainfall Total Next 7-Days

A widespread 1-3" is expected across much of the state this week. Rainfall totals of 3-5" are possible in the Panhandle with any outer bands.

***THIS DOES NOT INCLUDE
LOCALLY HIGHER TOTALS*
which could be as high as 6+"
along the Gulf Coast**

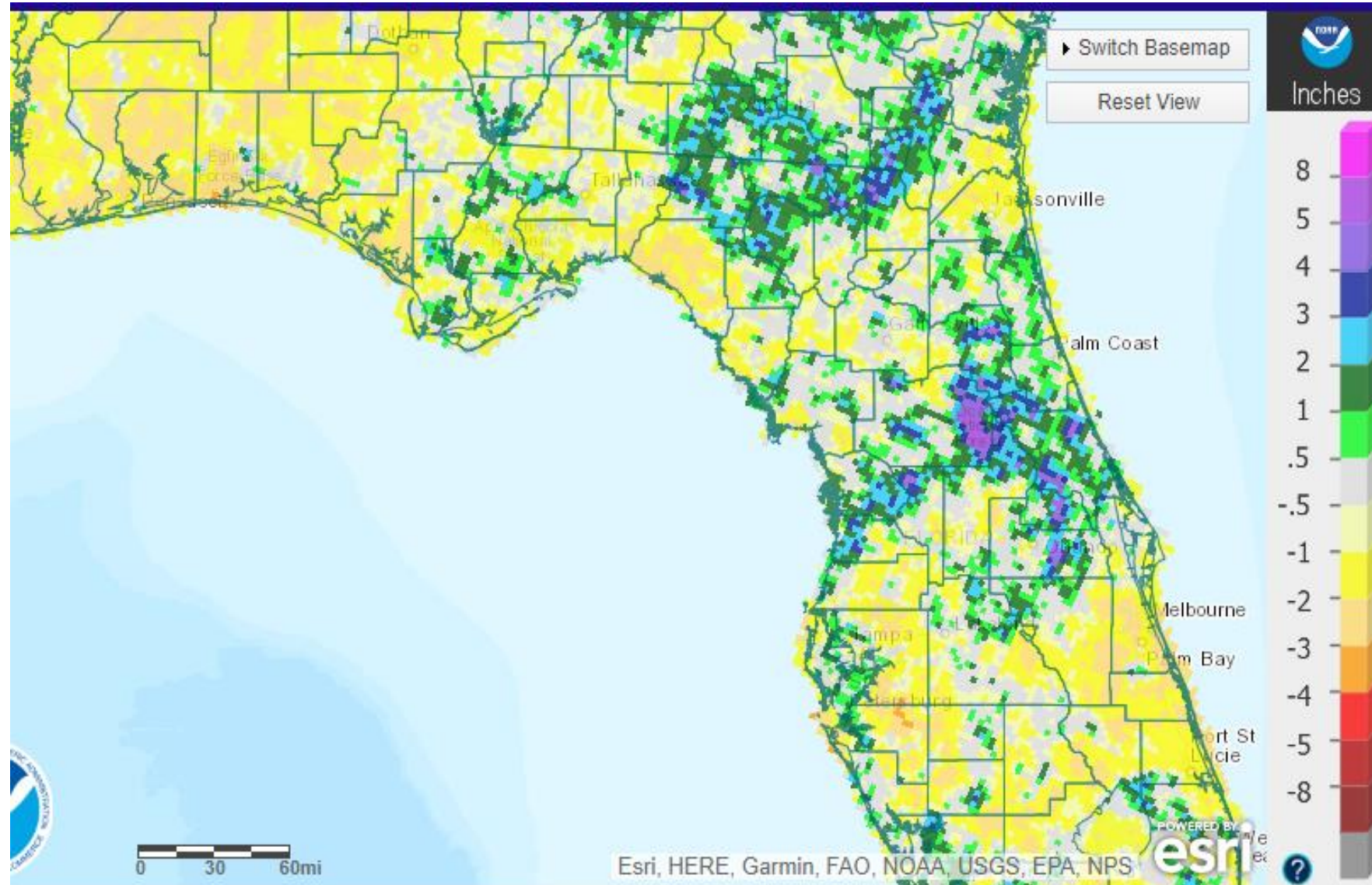
The greatest rainfall threat will vary from day to day and location to location depending on the exact development of the system.

All Florida rivers are well below flood stage. Drought conditions continue across inland Northwest Florida.

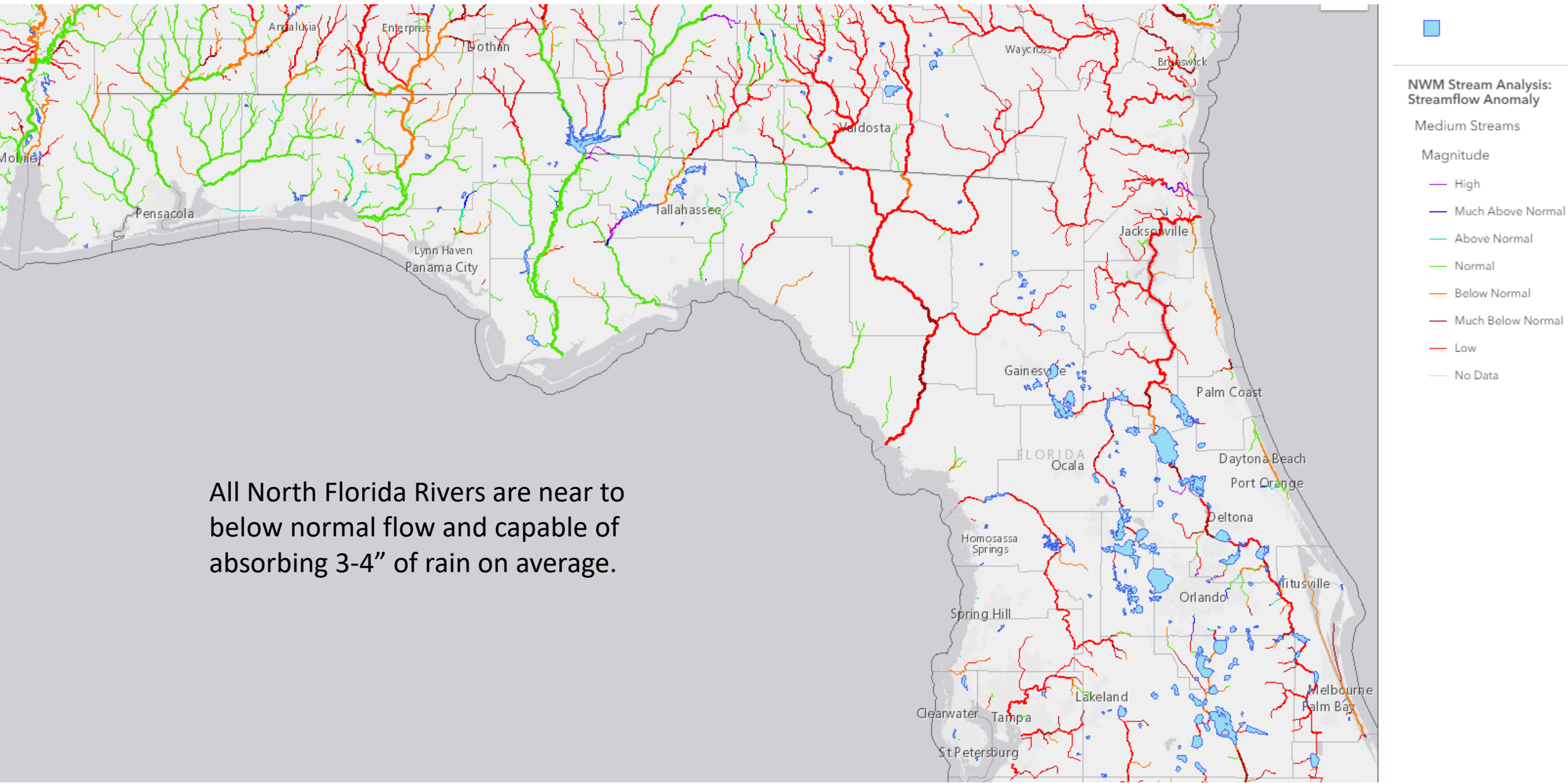


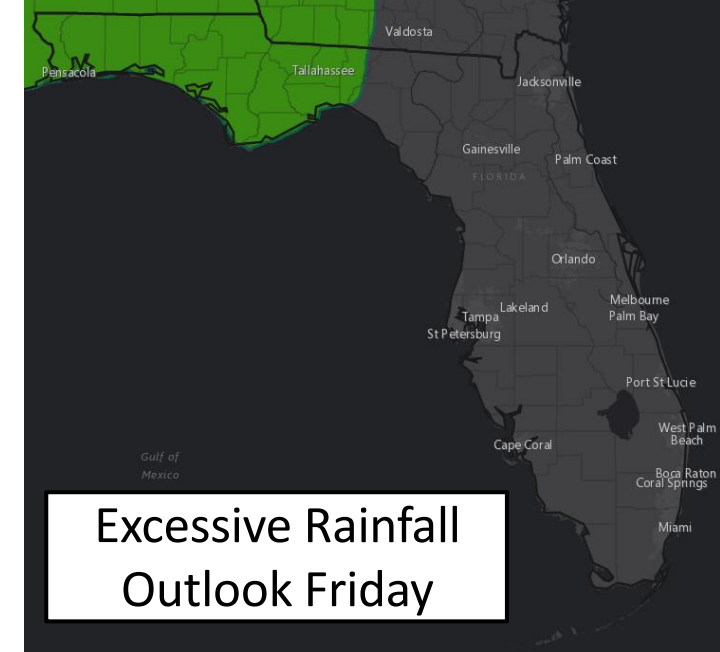
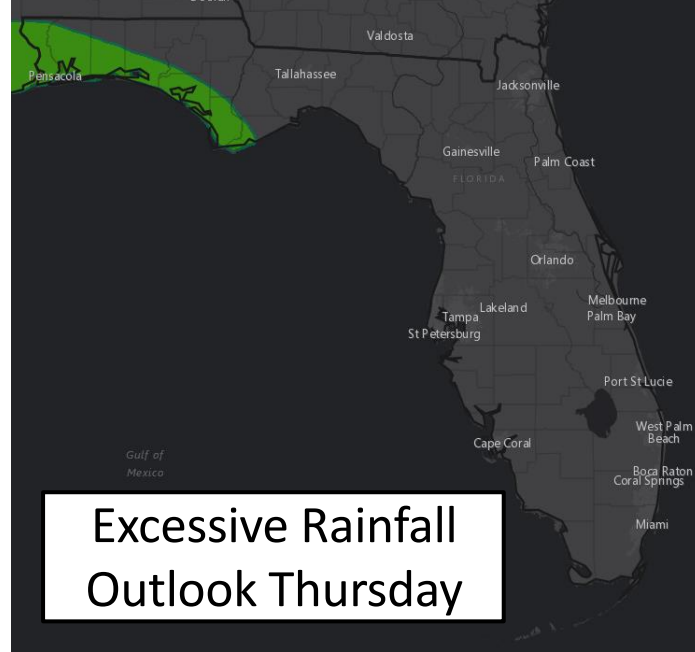
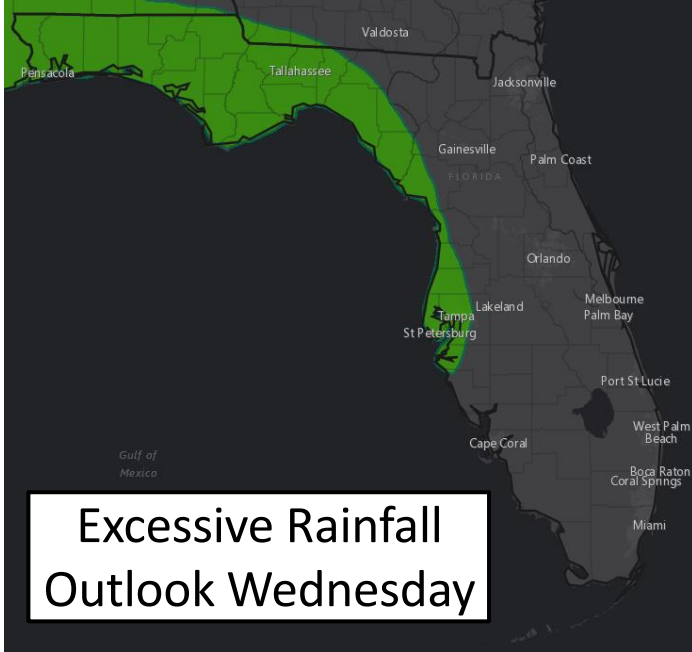
Rainfall Departure from Normal for Past 2 Weeks

- Much of the Panhandle is in a rainfall deficit and capable of absorbing more rainfall.
- Heavy rain over the eastern Big Bend and northern Peninsula could produce flooding issues at lower rain values.



National Water Model Stream Flow Anomalies





Understanding WPC Excessive Rainfall Risk Categories

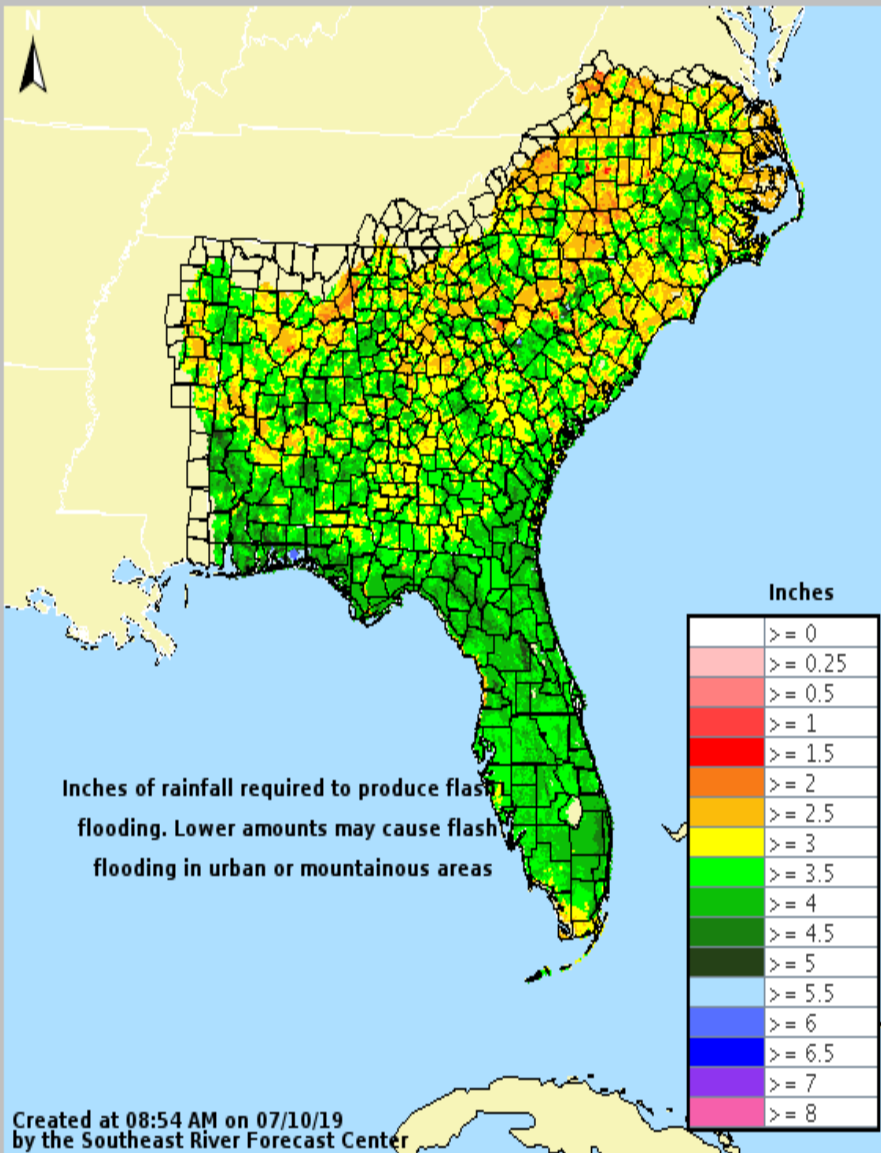
No Area/Label	MARGINAL (MRGL)	SLIGHT (SLGT)	MODERATE (MDT)	HIGH (HIGH)
Flash floods are generally not expected.	Isolated flash floods possible	Scattered flash floods possible	Numerous flash floods likely	Widespread flash floods expected
www.wpc.ncep.noaa.gov @NWSWPC	Localized and primarily affecting places that can experience rapid runoff with heavy rainfall.	Mainly localized. Most vulnerable are urban areas, roads, small streams and washes. Isolated significant flash floods possible.	Numerous flash flooding events with significant events possible. Many streams may flood, potentially affecting larger rivers.	Severe, widespread flash flooding. Areas that don't normally experience flash flooding, could. Lives and property in greater danger.
Flash flooding near me?	Flash Flooding	Flash Flooding	Flash Flooding	Flash Flooding
	NO Flash Flooding	NO Flash Flooding	NO Flash Flooding	NO Flash Flooding
 WEATHER PREDICTION CENTER				

- There is a marginal risk of excessive rainfall that could lead to some isolated flash flooding along the Gulf Coast this afternoon and on Wednesday
- Marginal flooding risks continue across parts of North Florida through the rest of this week. Depending on the track, the heavy rain threat could continue this weekend.



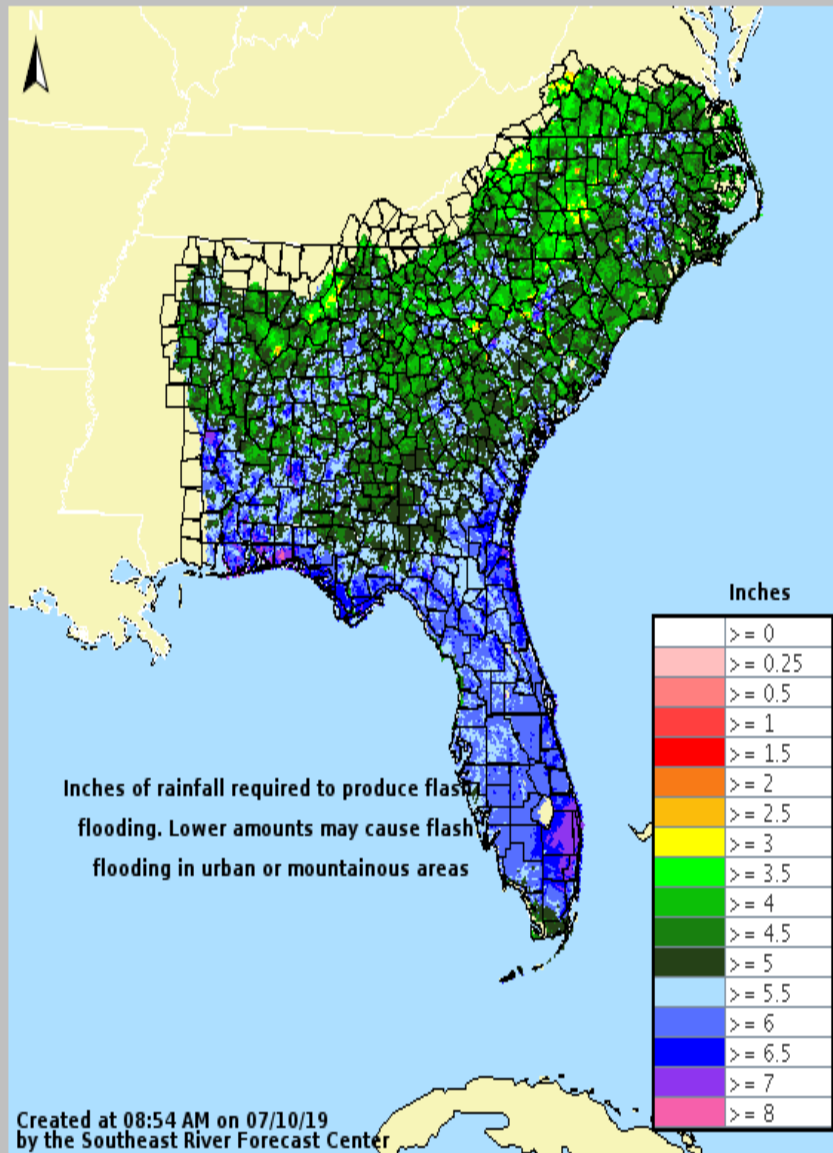
3-hr Flash Flood Guidance

Valid: 07/10/2019 @ 08:54 AM



12-hr Flash Flood Guidance

Valid: 07/10/2019 @ 08:54 AM



Flash Flood Potential Markers

- In general, flash flooding could occur in the Panhandle if heavy rain in excess of 4-6" occurs in a short amount of time or 6-8" within a 24 hour period.
- The Peninsula is more vulnerable to flash flooding at this time and could take as little as 3-5" to produce issues.

Forecast Severe Weather Risk – Wednesday-Saturday



Wednesday

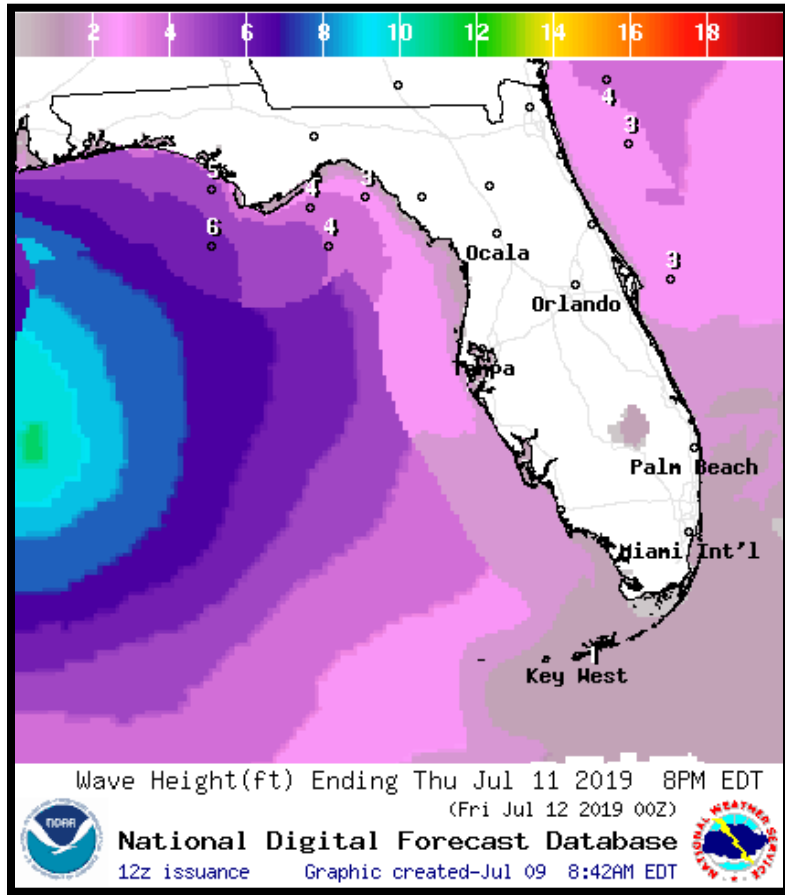
Thursday

Friday

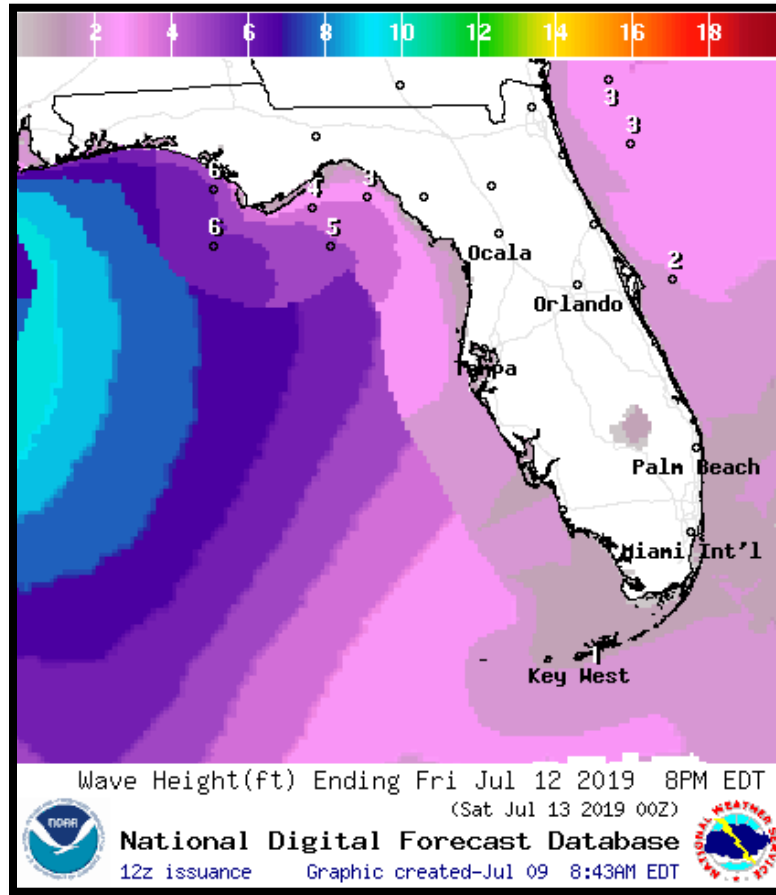
5	High
4	Moderate
3	Enhanced
2	Slight
1	Marginal
	Thunder

There is a Marginal Risk of severe weather over the next 3 days, mainly near the Panhandle coast. Isolated tornadoes will be possible in the outer bands. Even outside of the outer bands, a couple severe thunderstorms may be possible—typical of summertime storms

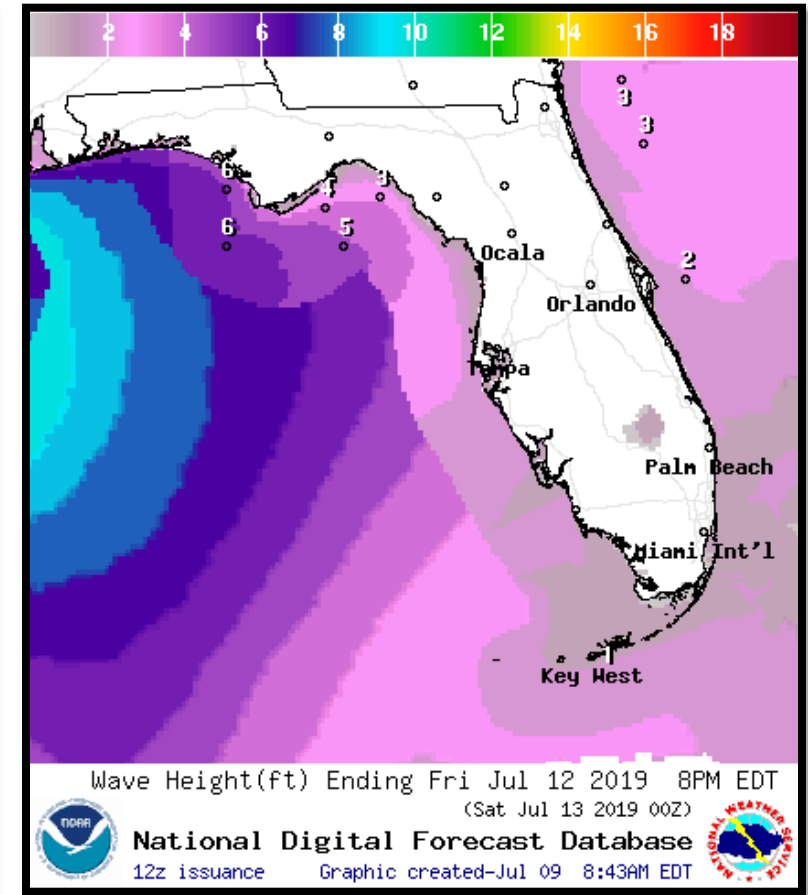
Forecast Wave Heights (feet) – Thursday-Saturday



Thursday



Friday



Saturday

High surf, a high risk of life-threatening rip currents, and some minor beach erosion will be likely in the Panhandle late week. With spring tidal cycles, some minor coastal flooding is possible near high tide in normally prone locations.

Summary

- Potential Tropical Cyclone #2 is currently located south of Panama City moving westward to southwestward over the northern Gulf of Mexico.
- Gradual organization of the system is expected over the next day or so and it could become a tropical depression today and a tropical storm Thursday. PTC #2 may become a hurricane by Friday.
- While uncertainty remains (particularly until the system organizes today), models have come into better general agreement on the track of the system since yesterday.
- The system will continue moving westward over the next few days across the northern Gulf of Mexico. This weekend, the system will turn northward or northwestward into Texas or Louisiana.
- The next name on the list is Barry.
- There are no other areas of possible development in the Atlantic Basin for at least the next five days.

Florida Outlook:

- Scattered to numerous showers and thunderstorms are expected each day this week statewide.
- Widespread rainfall totals of 1-3" are forecast statewide, though rainfall totals of 3-5" are possible in the Panhandle. Localized totals of 6+" are possible in some spots of the western Panhandle.
- The best chance of heavy rain today will be in the Panhandle and along the West Coast today.
- The best chance of heavy rain through late this week will be in the Panhandle.
- An isolated case of flash flooding will be possible, particularly in urban areas with brief periods of ponding of water on roadways. This will be mainly in areas where rain moves repeatedly over the same locations.
- Isolated tornadoes will be possible across the Panhandle beginning Thursday and may linger into Friday.
- Dangerous rip currents, high surf, and minor coastal flooding will be possible along the Panhandle coast over the next several days.

The next briefing packet will be issued this afternoon. For the latest information on the tropics, please visit the National Hurricane Center website at www.hurricanes.gov.



TROPICAL UPDATE



Created by:

Cameron Young, Assistant State Meteorologist

Cameron.Young@em.myflorida.com

Courtney Coyle, Intern Meteorologist

Courtney.Coyle@em.myflorida.com

State Meteorological Support Unit

Florida Division of Emergency Management

Users wishing to subscribe (approval pending) to this distribution list, register at https://public.govdelivery.com/accounts/FLDEM/subscriber/new?topic_id=SERT_Met_Tropics.

Other reports available for subscription are available at <https://public.govdelivery.com/accounts/FLDEM/subscriber/new?preferences=true>