



TROPICAL UPDATE



9 AM EDT

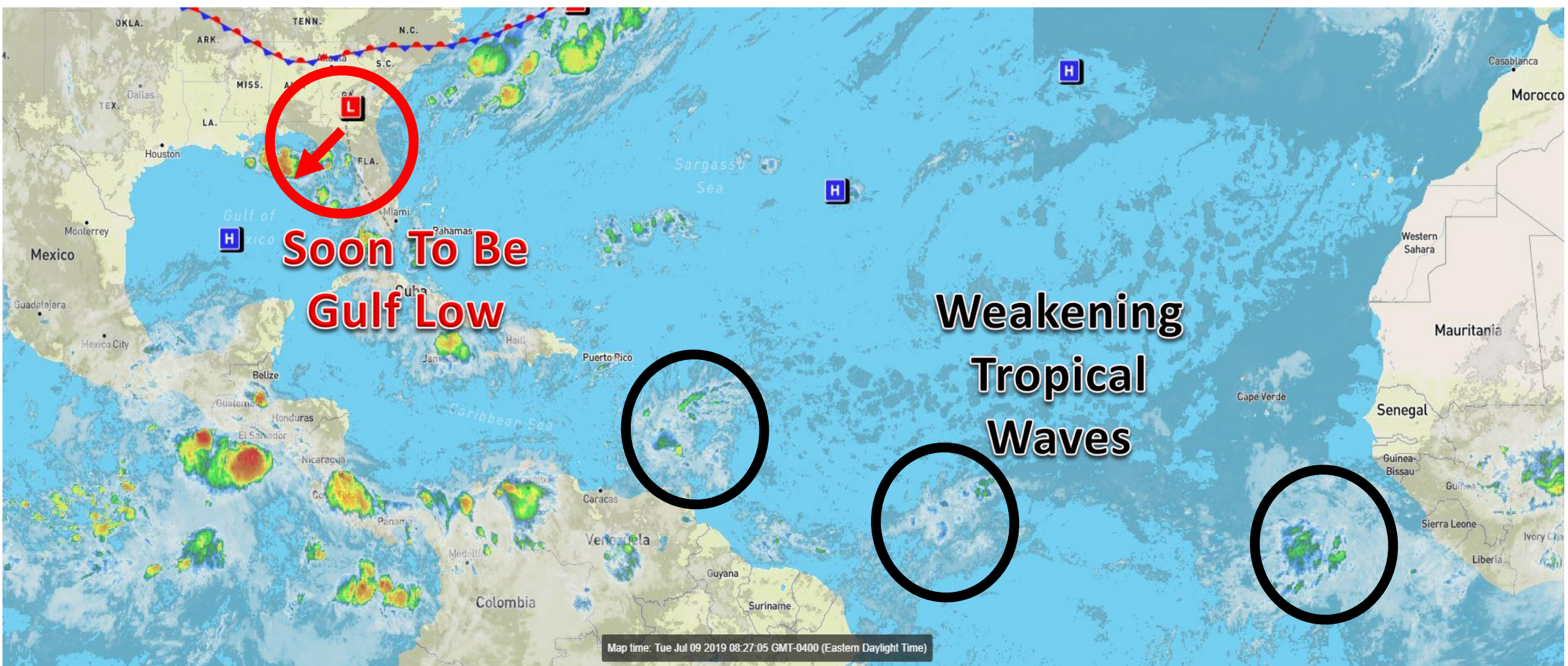
Tuesday, July 9, 2019

Northern Gulf Low/Invest 92L (80%)

This update is intended for government and emergency response officials, and is provided for informational and situational awareness purposes only. Forecast conditions are subject to change based on a variety of environmental factors. For additional information, or for any life safety concerns with an active weather event please contact your County Emergency Management or Public Safety Office, local National Weather Service forecast office, or visit the National Hurricane Center website at www.hurricanes.gov.

Atlantic Basin Satellite Image

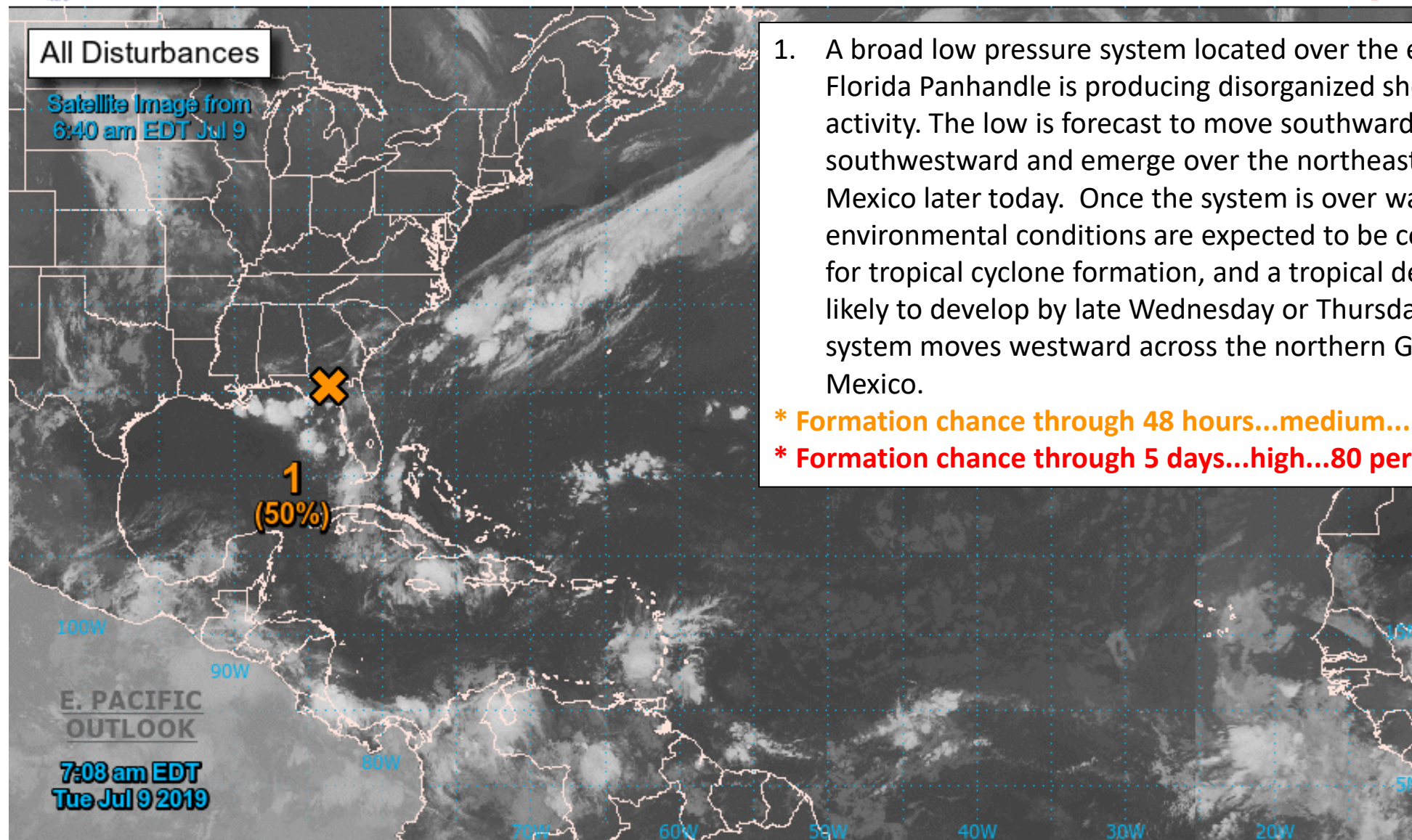
Chance of development: — None — Low — Medium — High





Two-Day Graphical Tropical Weather Outlook

National Hurricane Center Miami, Florida



1. A broad low pressure system located over the eastern Florida Panhandle is producing disorganized shower activity. The low is forecast to move southward to southwestward and emerge over the northeastern Gulf of Mexico later today. Once the system is over water, environmental conditions are expected to be conducive for tropical cyclone formation, and a tropical depression is likely to develop by late Wednesday or Thursday while the system moves westward across the northern Gulf of Mexico.

* Formation chance through 48 hours...medium...50 percent.

* Formation chance through 5 days...high...80 percent.

Current Disturbances and Two-Day Cyclone Formation Chance: < 40% 40-60% > 60%

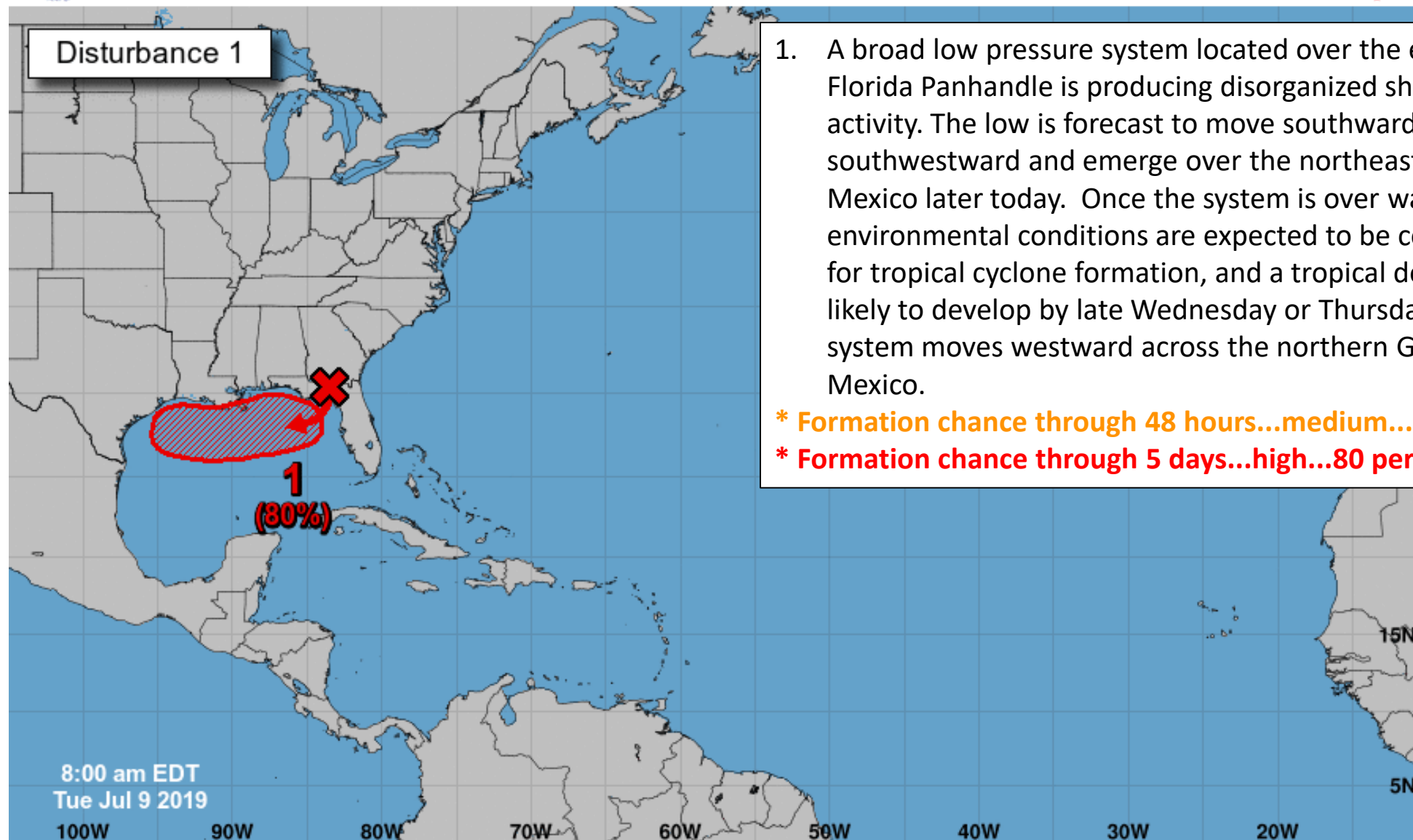
Tropical or Sub-Tropical Cyclone: Depression Storm Hurricane

Post-Tropical Cyclone or Remnants



Five-Day Graphical Tropical Weather Outlook

National Hurricane Center Miami, Florida



1. A broad low pressure system located over the eastern Florida Panhandle is producing disorganized shower activity. The low is forecast to move southward to southwestward and emerge over the northeastern Gulf of Mexico later today. Once the system is over water, environmental conditions are expected to be conducive for tropical cyclone formation, and a tropical depression is likely to develop by late Wednesday or Thursday while the system moves westward across the northern Gulf of Mexico.

* Formation chance through 48 hours...medium...50 percent.

* Formation chance through 5 days...high...80 percent.

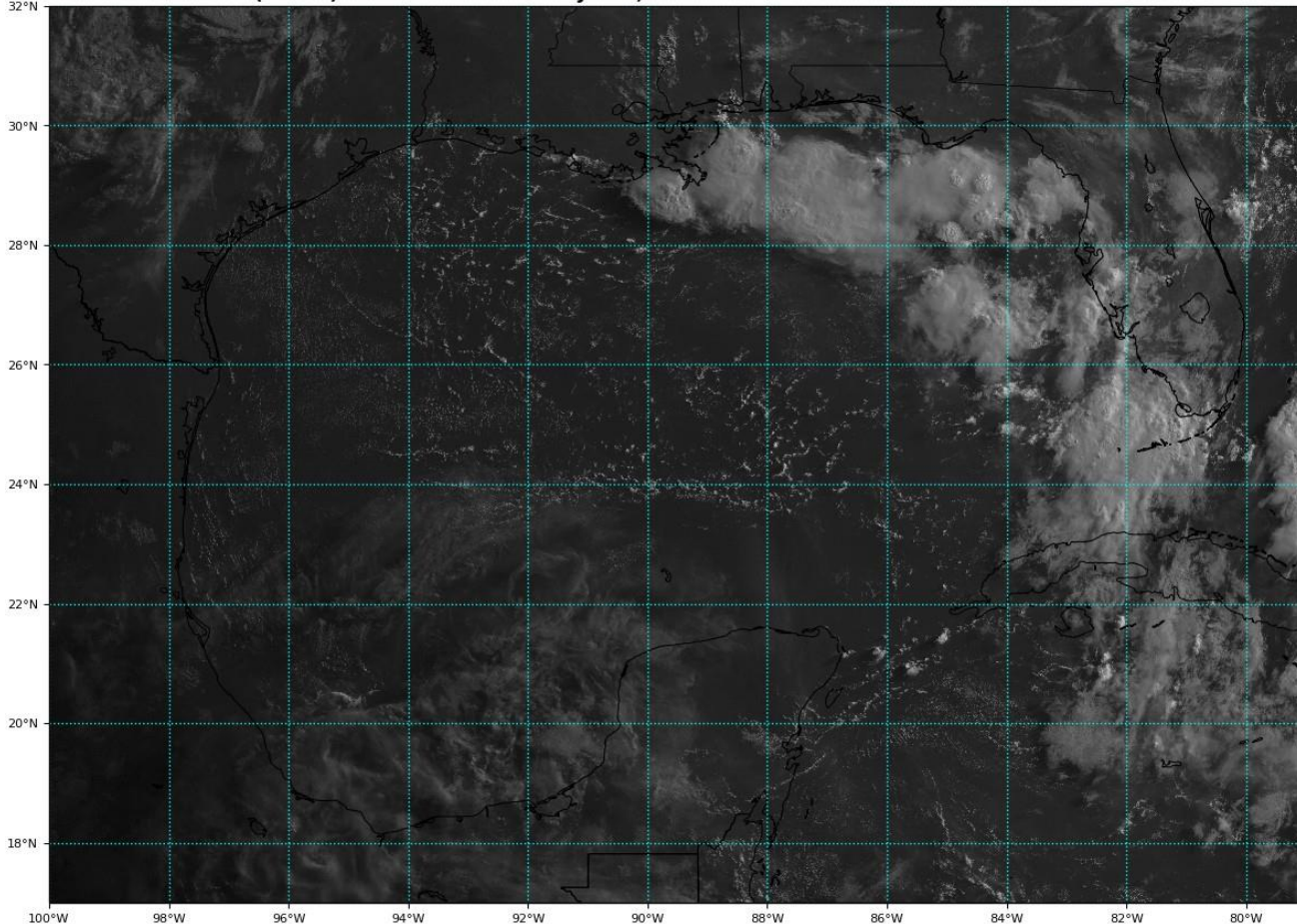
Current Disturbances and Five-Day Cyclone Formation Chance: < 40% 40-60% > 60%

Tropical or Sub-Tropical Cyclone: Depression Storm Hurricane

Post-Tropical Cyclone or Remnants

GOES-16 Channel 2 (visible) Reflectance at 12:15Z Jul 09, 2019

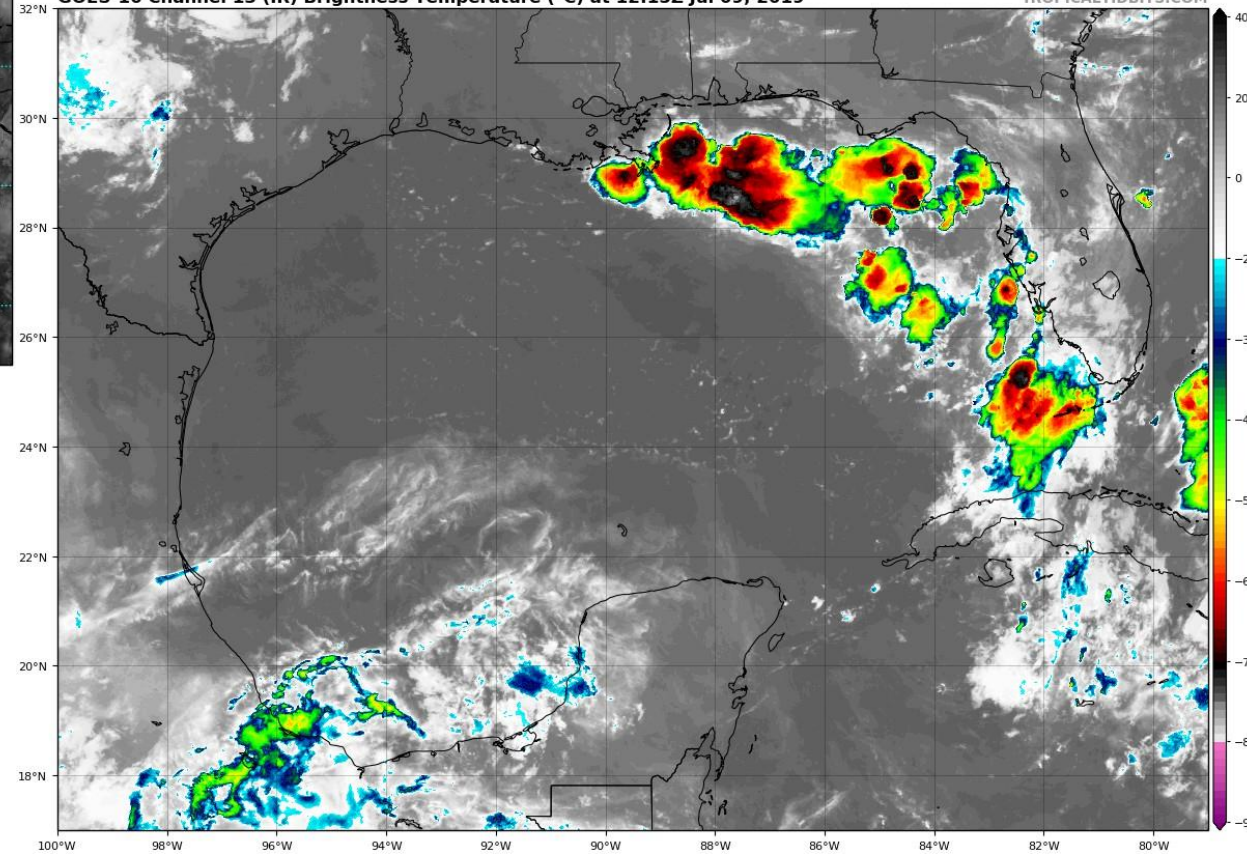
TROPICALTIDBITS.COM



92L Satellite Images

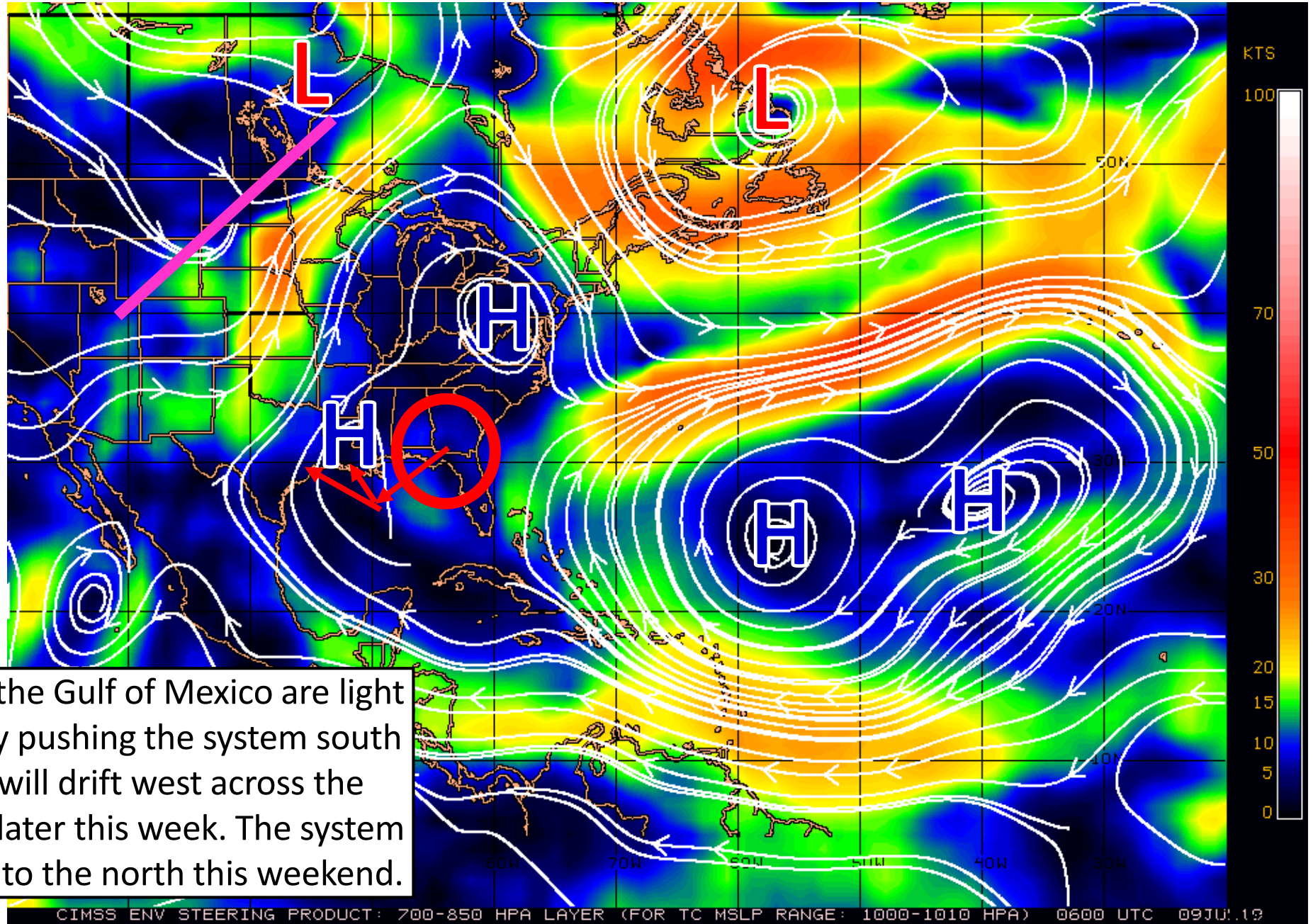
GOES-16 Channel 13 (IR) Brightness Temperature (°C) at 12:15Z Jul 09, 2019

TROPICALTIDBITS.COM



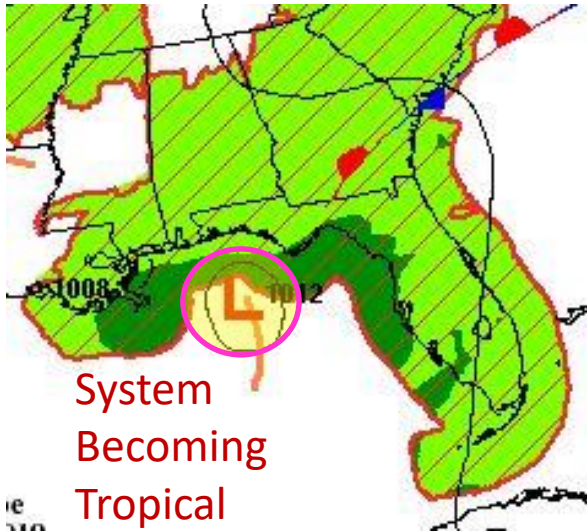
Thunderstorm activity has started to increase over the northeastern Gulf of Mexico as the area of low pressure begins to move south over the open water. However, activity is very disorganized.

Steering Currents

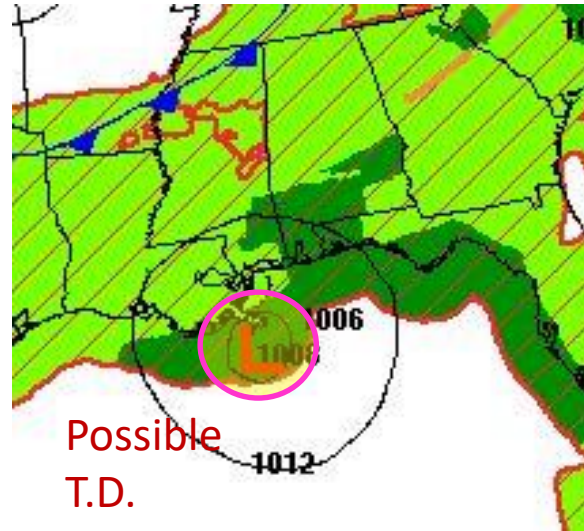


Steering currents across the Gulf of Mexico are light with high pressure slowly pushing the system south and west. The system will drift west across the northern Gulf of Mexico later this week. The system will eventually turn back to the north this weekend.

Forecast Weather Maps (fronts)



Wednesday



Thursday



Friday

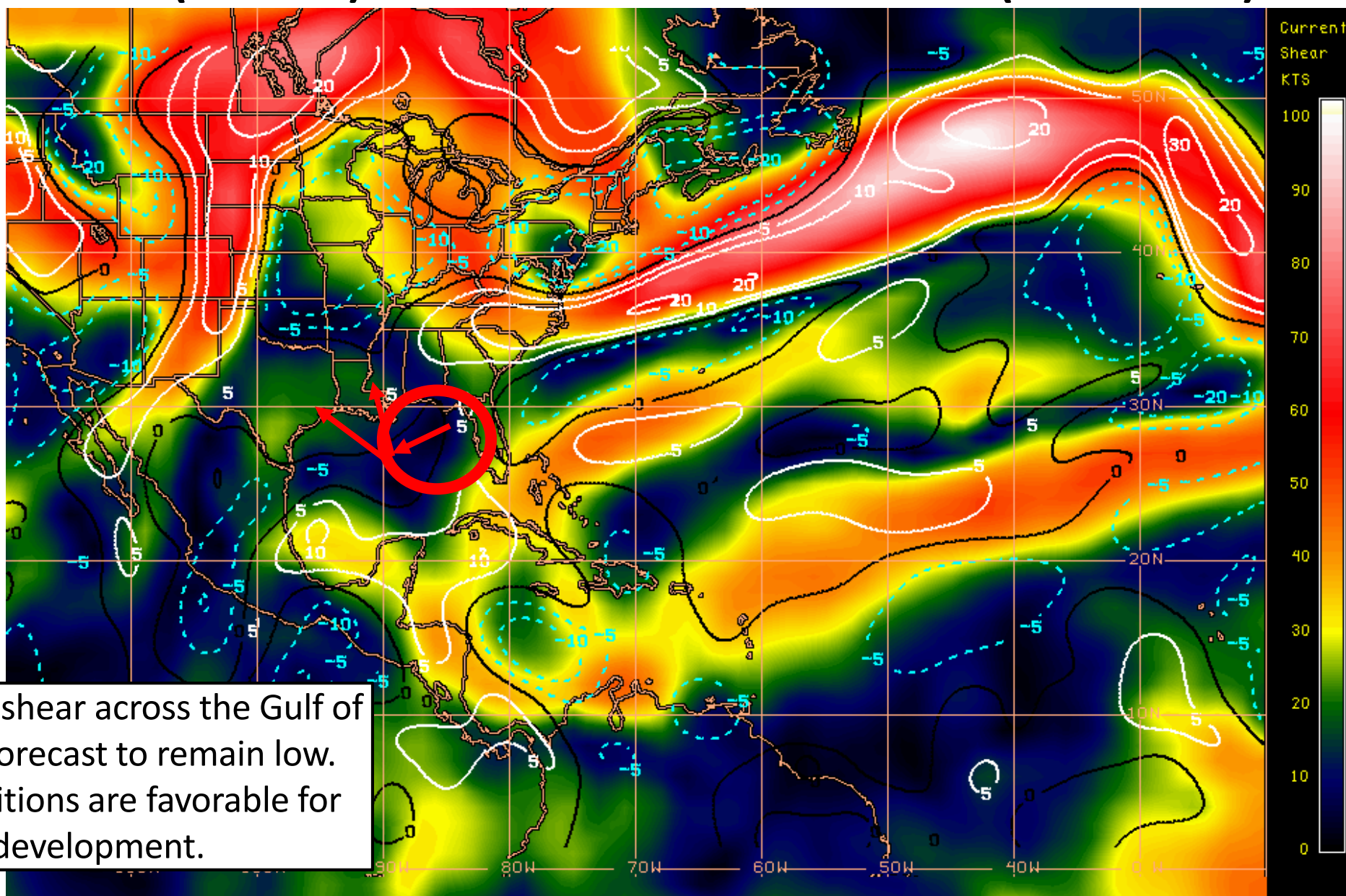


Saturday

A cold front and an associated area of low pressure will stall out across the northern Gulf of Mexico. As the system meanders over water it will gradually acquire tropical characteristics, and may become a tropical depression or tropical storm by Friday. The system will eventually drift northwest into the northern Gulf Coast as another cold front approaches over the weekend. **Confidence is increasing on the system moving further west towards Louisiana.**

The best chance of heavy rainfall in the Peninsula will be today and Panhandle/Big Bend tomorrow. If the system would move further east, say into southeast Louisiana, rain chances will remain elevated in the western Panhandle into this weekend.

Wind Shear (shaded) and Wind Shear Tendencies (contoured)



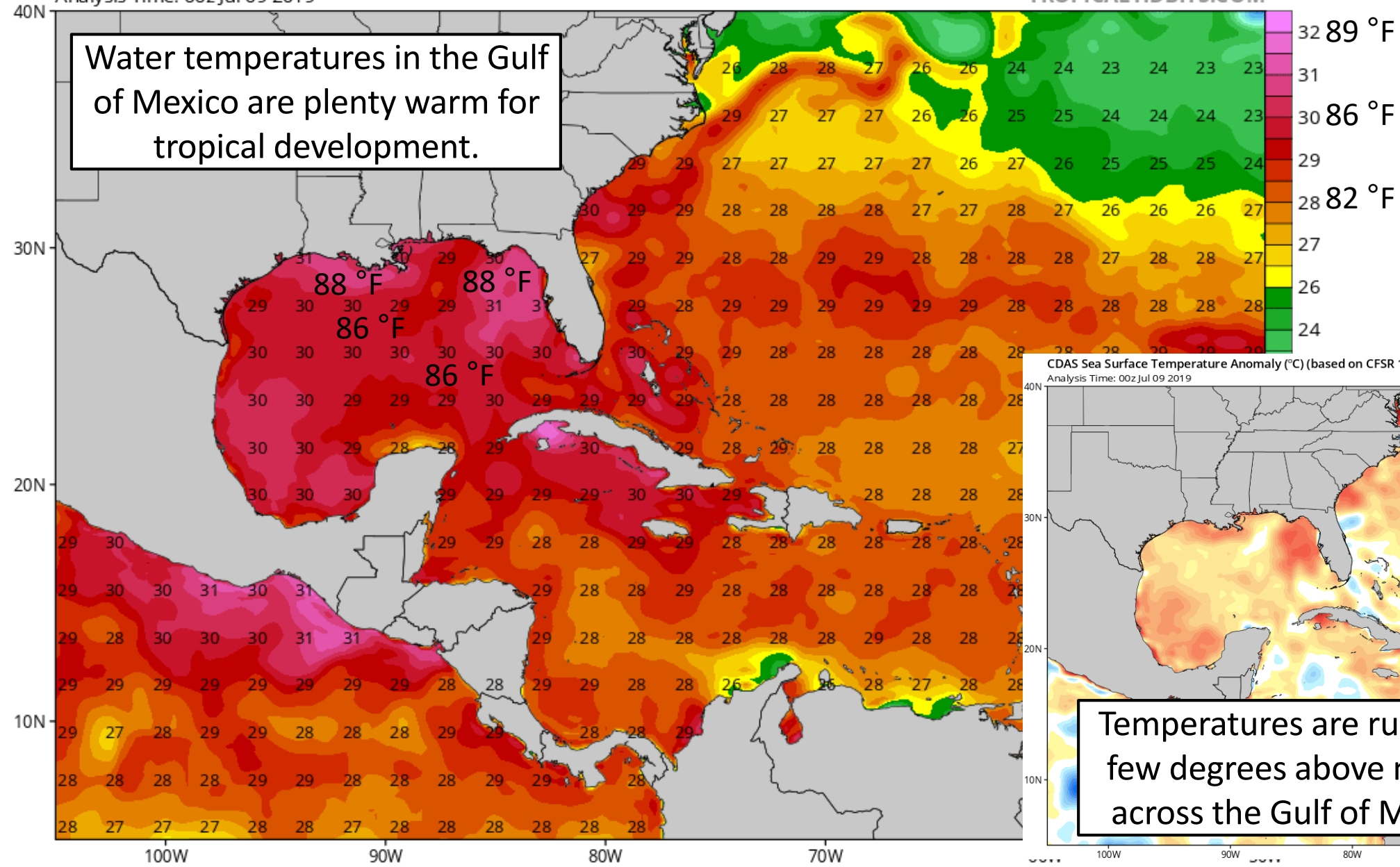
Current Sea Surface Temperatures

CDAS Sea Surface Temperature (°C)

Analysis Time: 00z Jul 09 2019

TROPICALTIDBITS.COM

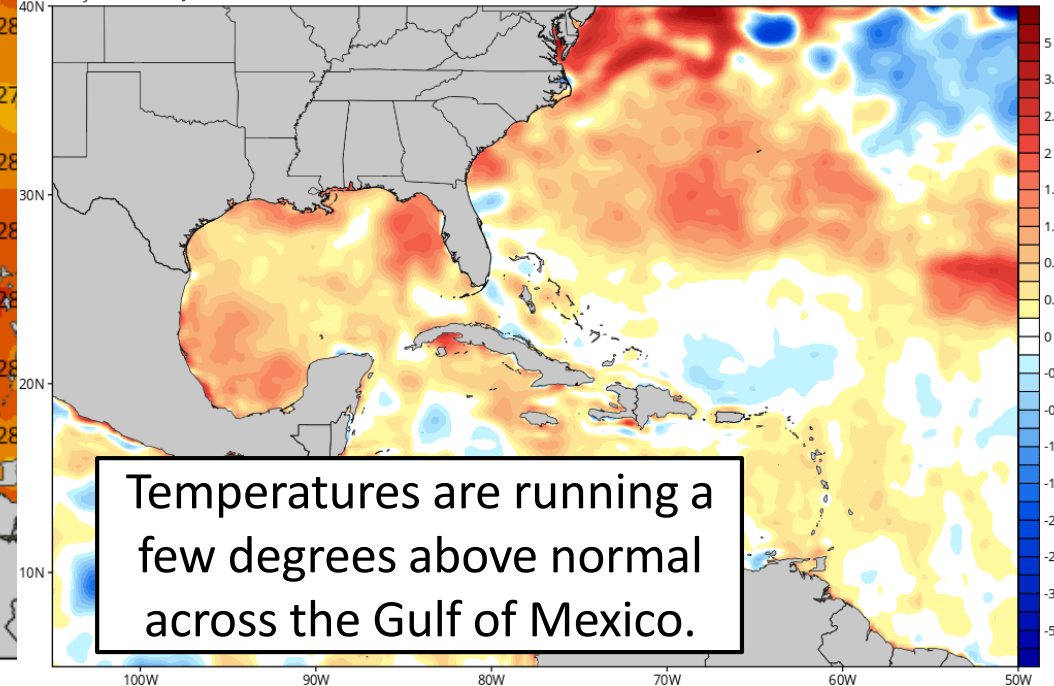
Water temperatures in the Gulf of Mexico are plenty warm for tropical development.



CDAS Sea Surface Temperature Anomaly (°C) (based on CFSR 1981-2010 Climatology)

Analysis Time: 00z Jul 09 2019

TROPICALTIDBITS.COM

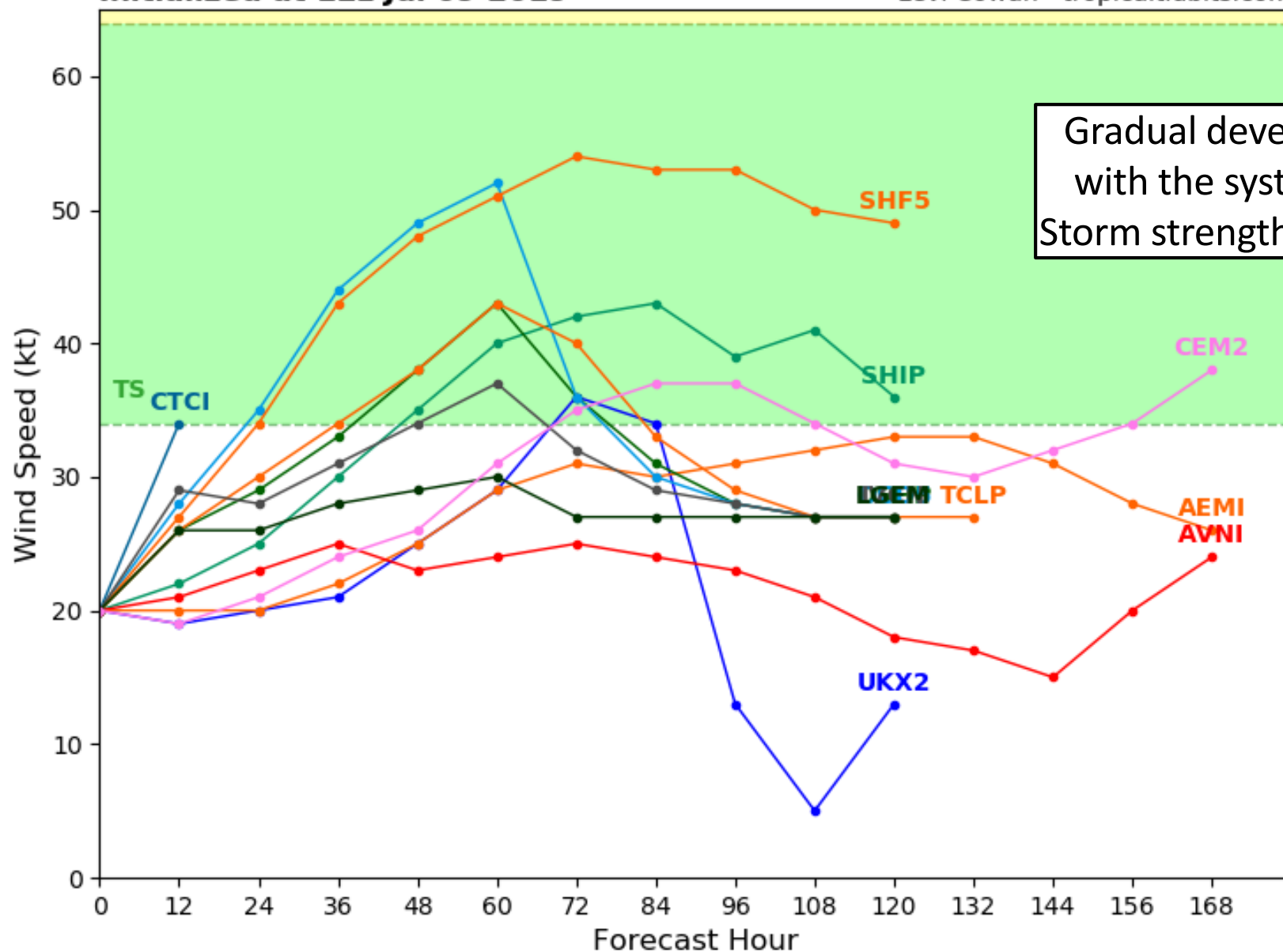


Current Model Intensity Forecast

Invest 92L Model Intensity Guidance

Initialized at 12z Jul 09 2019

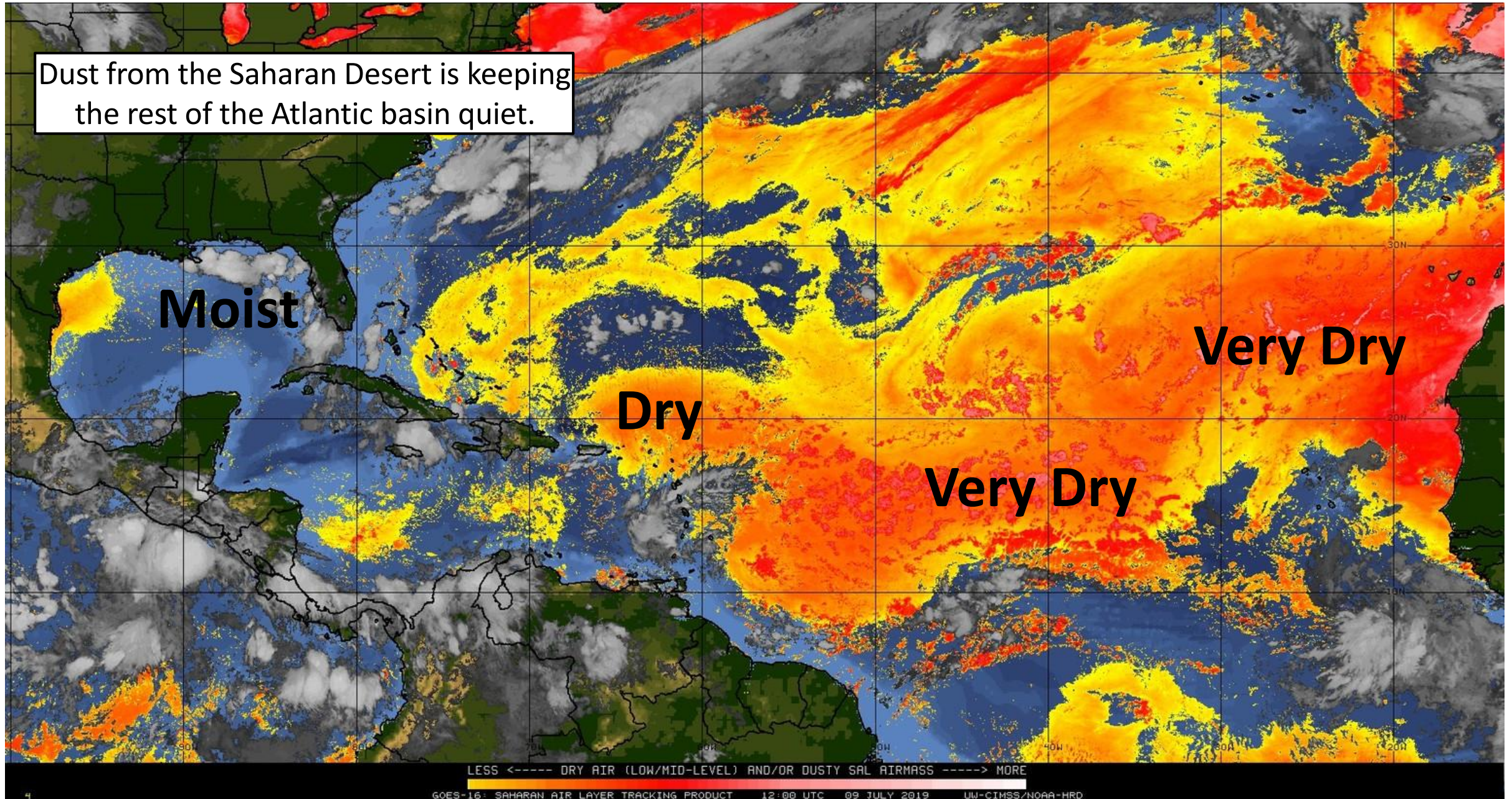
Levi Cowan - tropicaltidbits.com



Gradual development is expected with the system nearing Tropical Storm strength most likely on Friday.

Dry Air & Saharan Dust

Dust from the Saharan Desert is keeping the rest of the Atlantic basin quiet.



Cumulative Rainfall Total Next 7-Days

A widespread 1-3" is expected across much of the state this week. Rainfall totals have trending down due to the further south and west track.

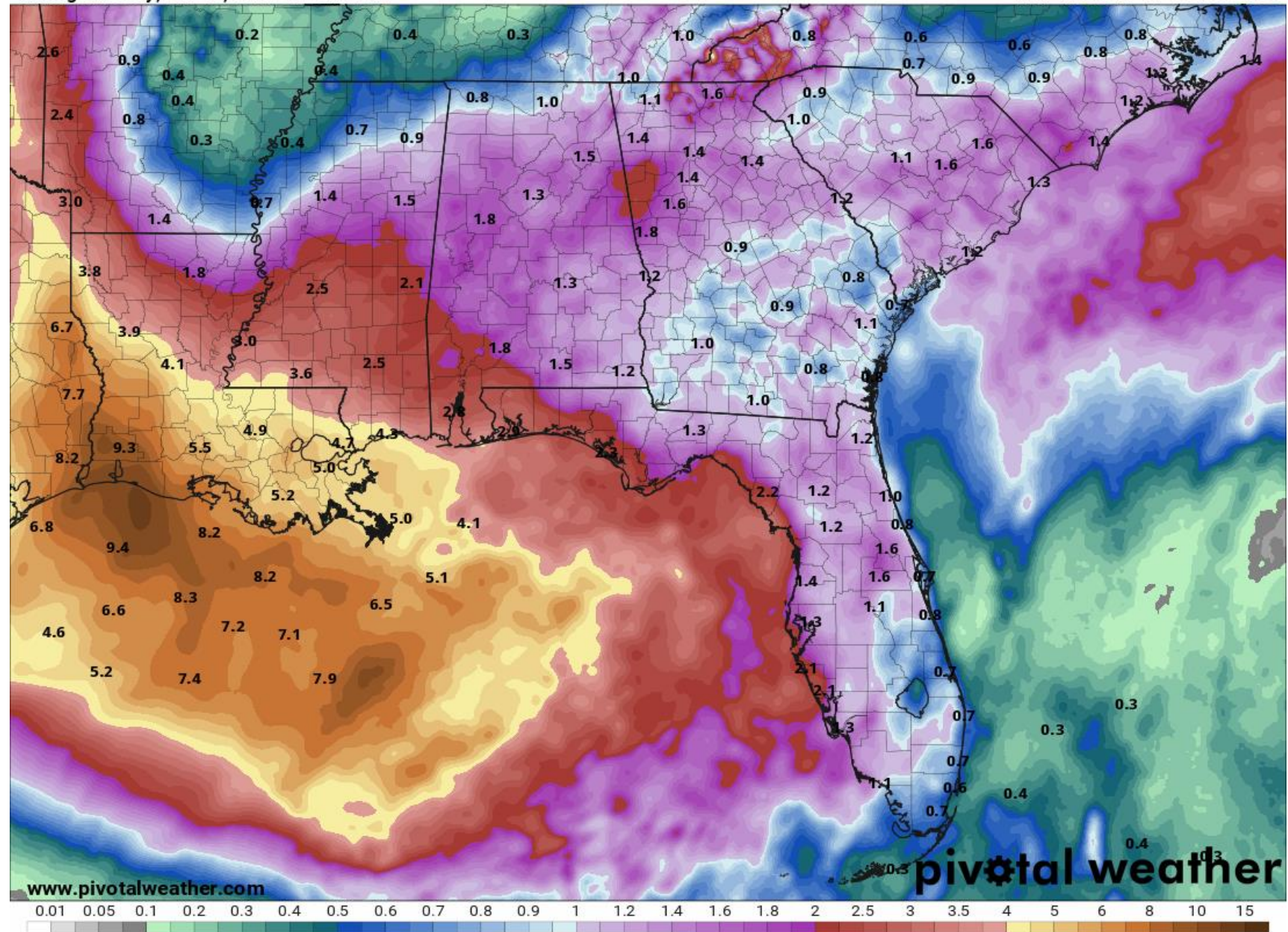
***THIS DOES NOT INCLUDE LOCALLY HIGHER TOTALS* which could be as high as 6" along the Gulf Coast**

The greatest rainfall threat will vary from day to day and location to location depending on the exact development of the system.

All Florida rivers are well below flood stage. Drought conditions continue across inland Northwest Florida.

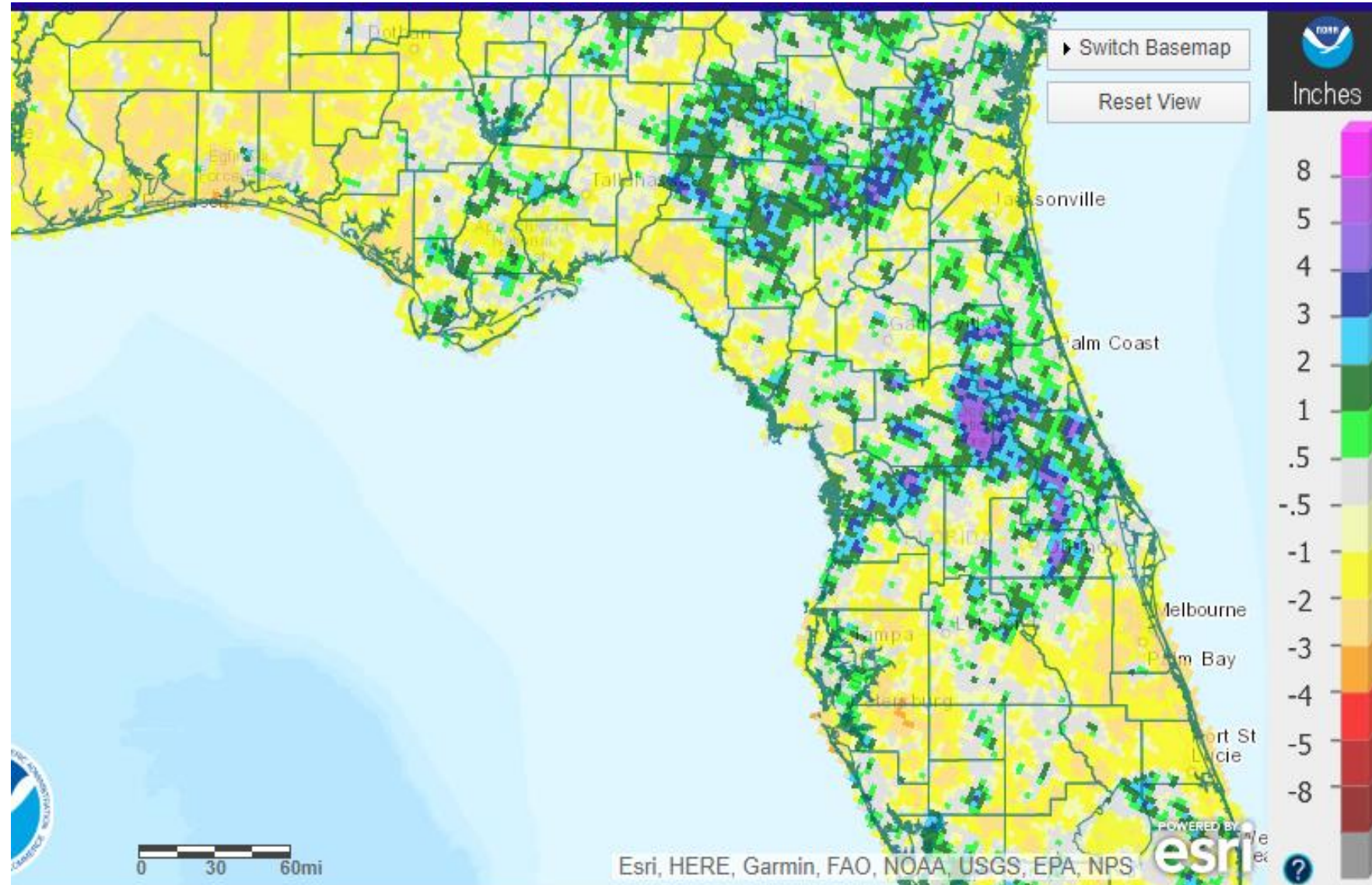
7-Day Precipitation (in)
Ending Tuesday, Jul. 16, 2019 at 8 a.m. EDT

Init: Tue 2019-07-09 12z WPC

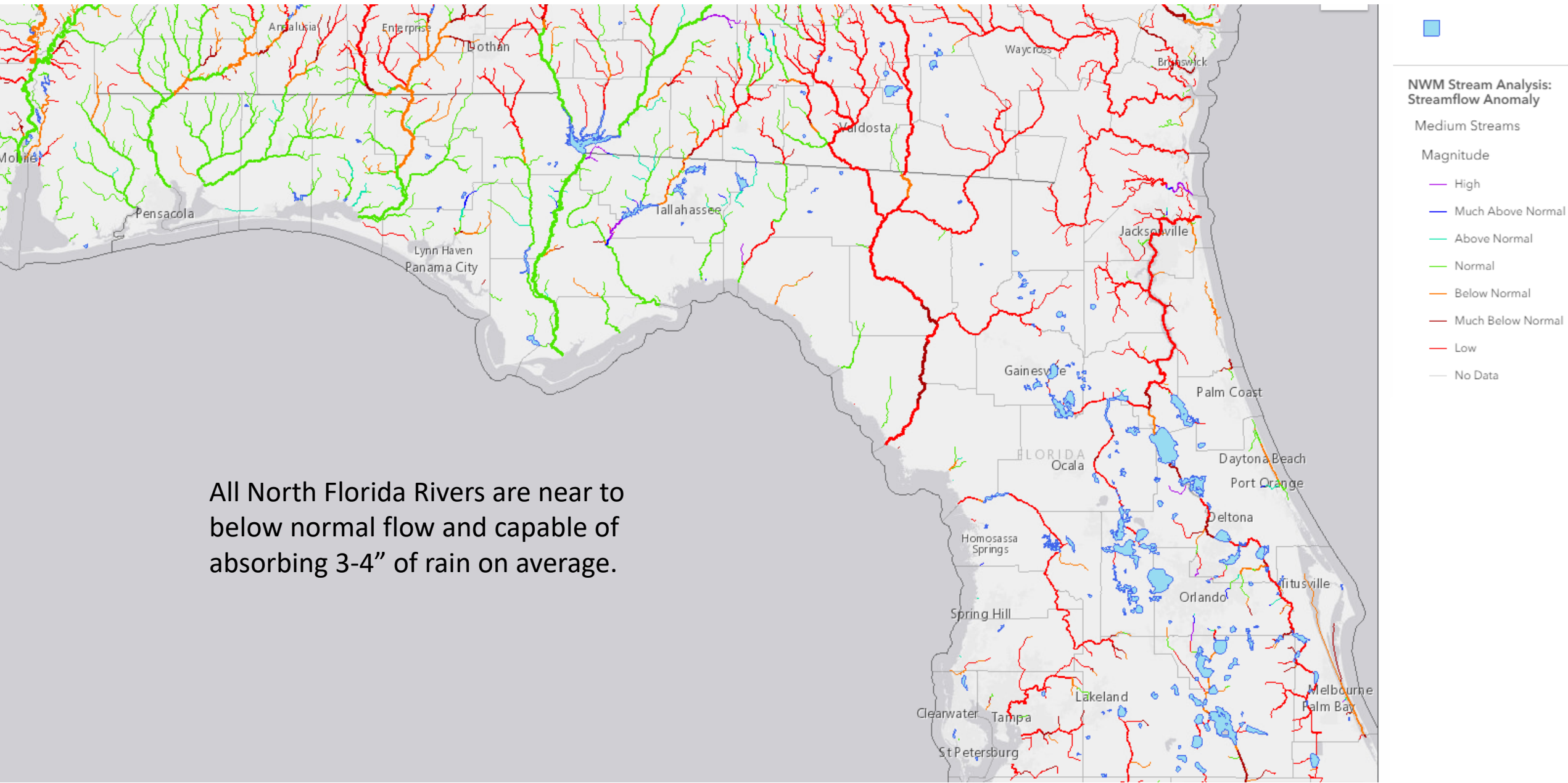


Rainfall Departure from Normal for Past 2 Weeks

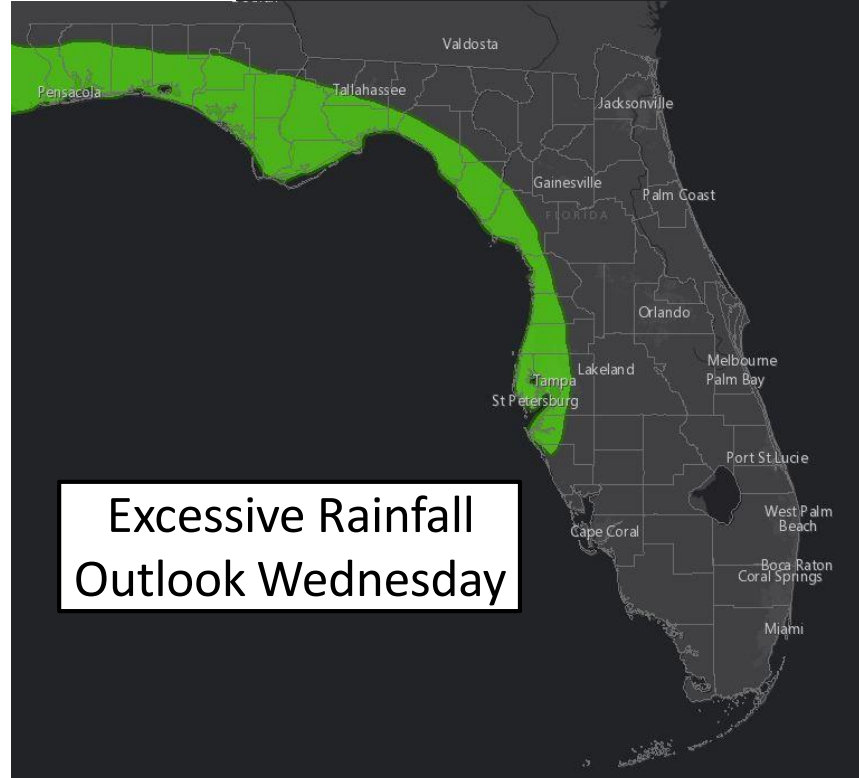
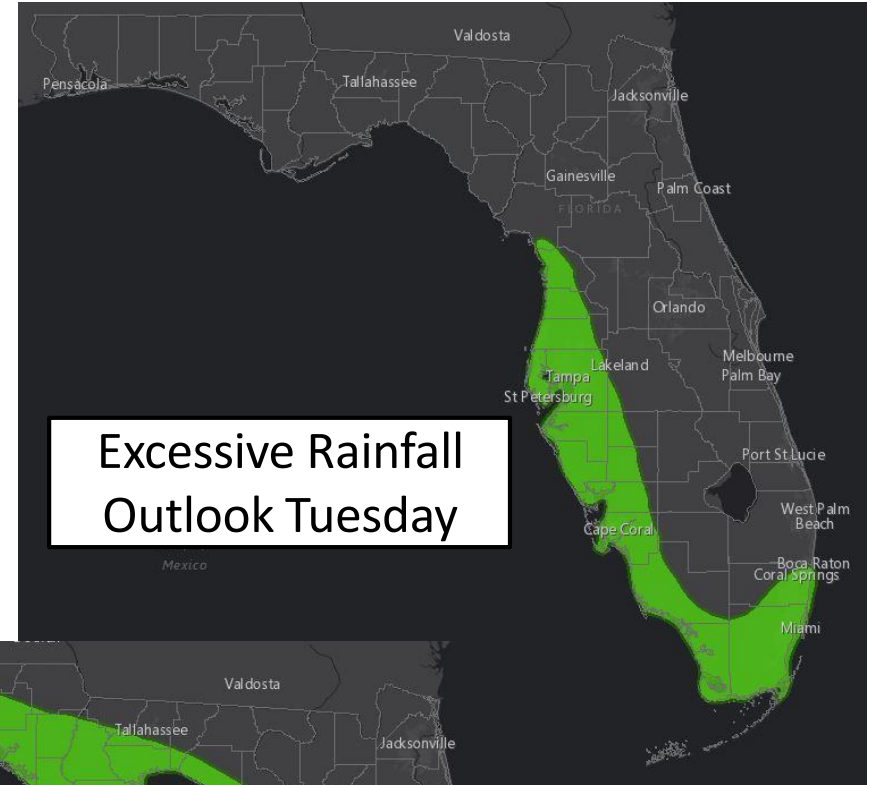
- Much of the Panhandle is in a rainfall deficit and capable of absorbing more rainfall.
- Heavy rain over the eastern Big Bend and northern Peninsula could produce flooding issues at lower rain values.








National Water Model Stream Flow Anomalies



- There is a marginal risk of excessive rainfall that could lead to some isolated flash flooding along the Gulf Coast this afternoon and on Wednesday
- Additional flooding impacts to the western Panhandle may occur Friday-Sunday depending on the exact track.

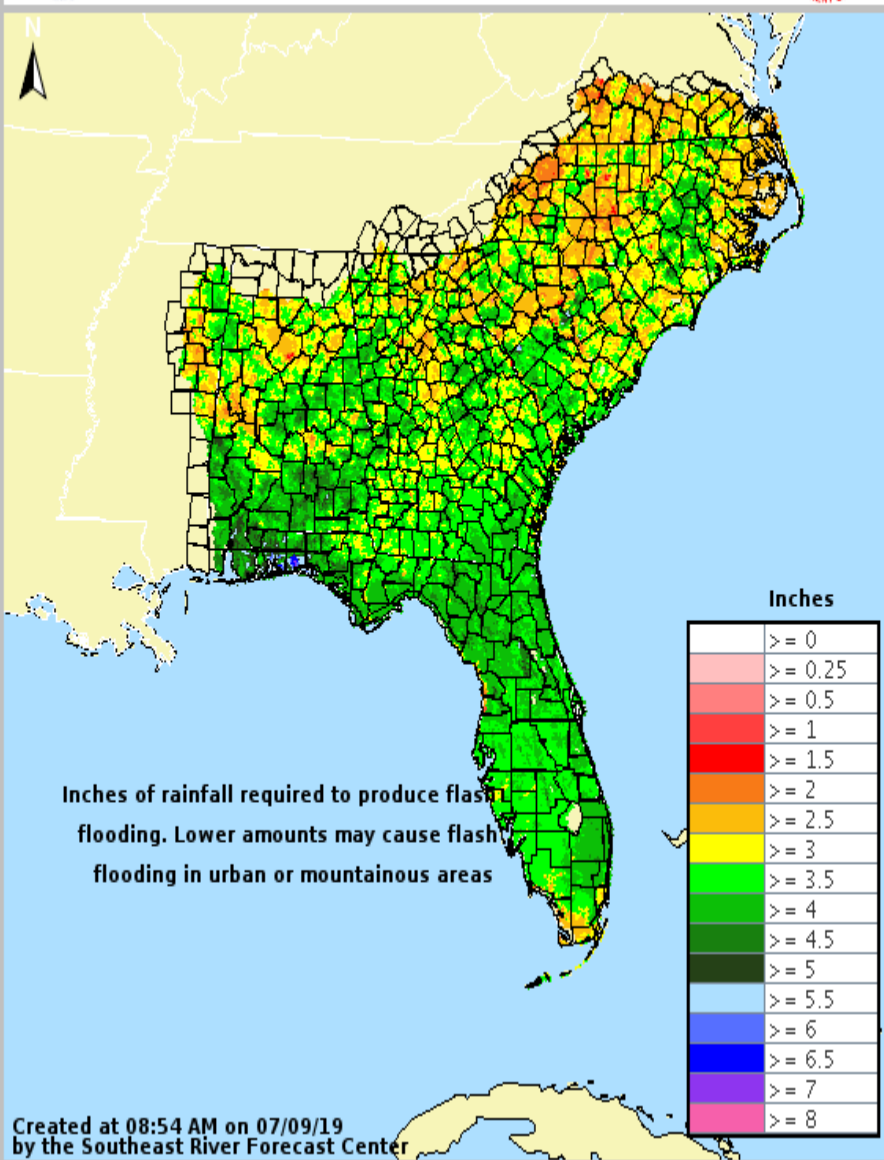


Understanding WPC Excessive Rainfall Risk Categories				
No Area/Label	MARGINAL (MRGL)	SLIGHT (SLGT)	MODERATE (MDT)	HIGH (HIGH)
Flash floods are generally not expected.	Isolated flash floods possible	Scattered flash floods possible	Numerous flash floods likely	Widespread flash floods expected
Localized and primarily affecting places that can experience rapid runoff with heavy rainfall.	Mainly localized. Most vulnerable are urban areas, roads, small streams and washes. Isolated significant flash floods possible.	Numerous flash flooding events with significant events possible. Many streams may flood, potentially affecting larger rivers.	Severe, widespread flash flooding. Areas that don't normally experience flash flooding, could. Lives and property in greater danger.	
www.wpc.ncep.noaa.gov @NWSWPC				
Flash flooding near me?	Flash Flooding			
	NO Flash Flooding			
 WEATHER PREDICTION CENTER				



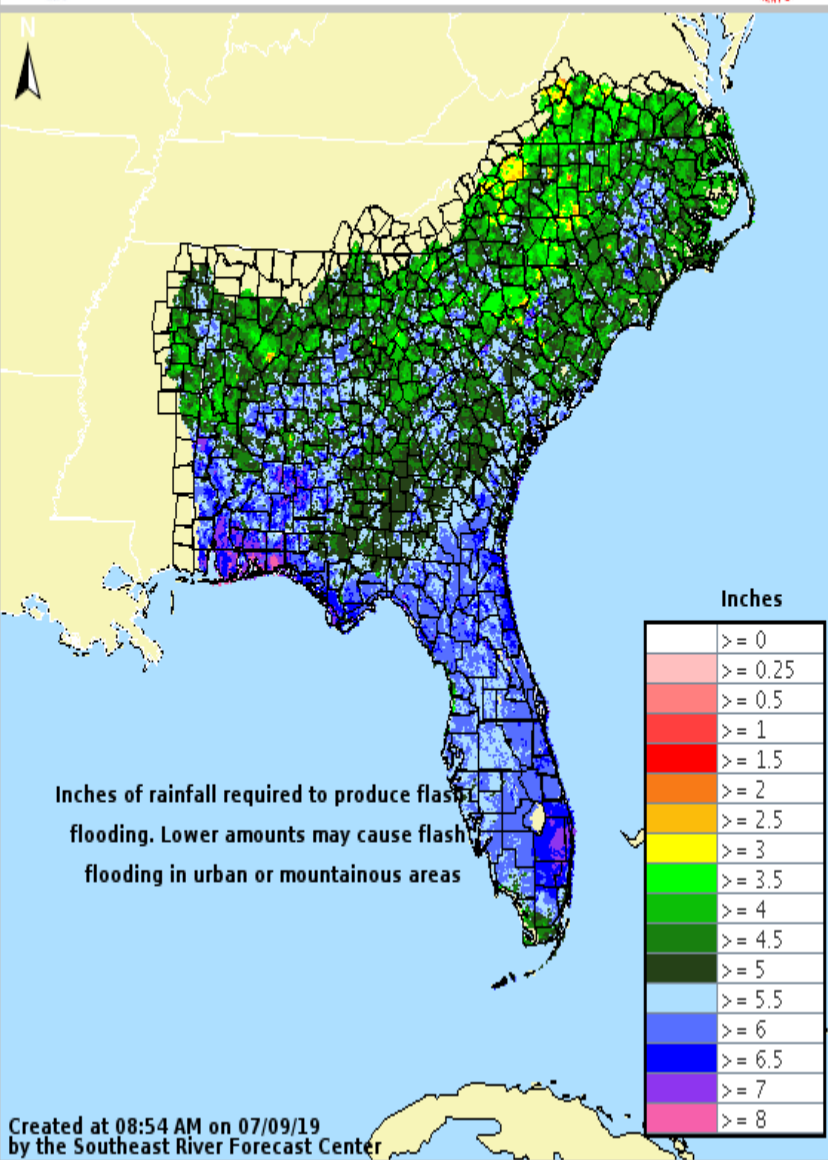
3-hr Flash Flood Guidance

Valid: 07/09/2019 @ 08:54 AM



12-hr Flash Flood Guidance

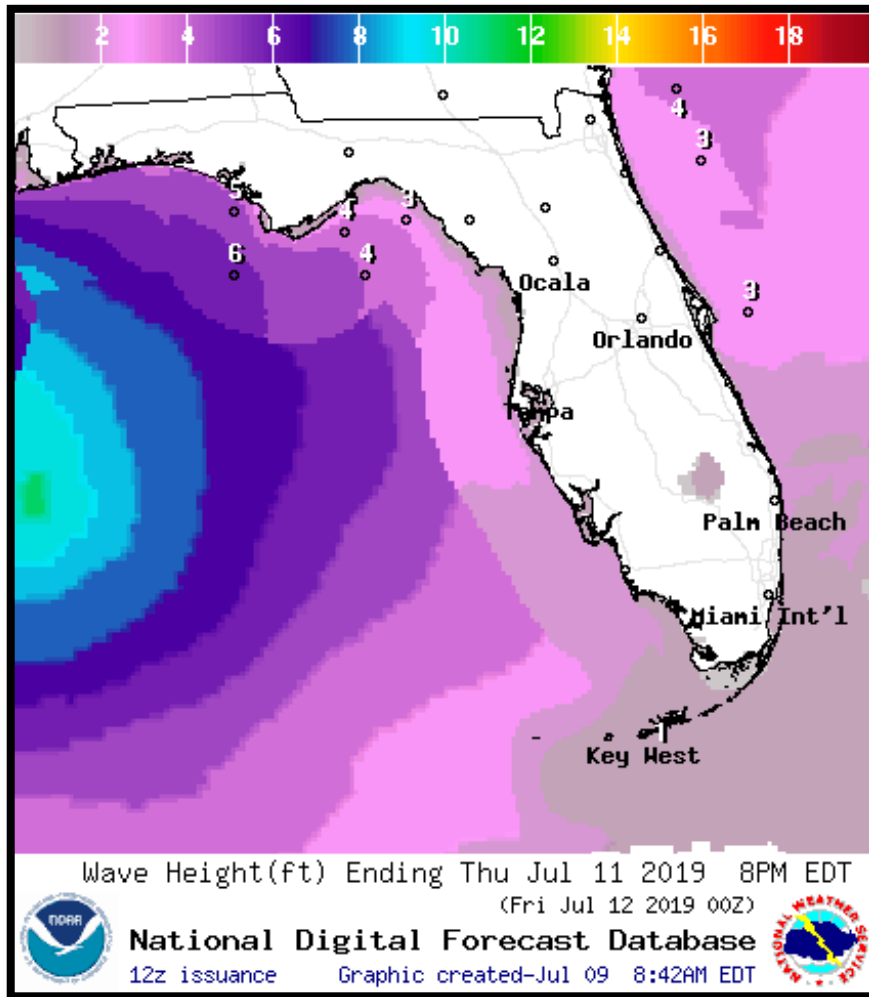
Valid: 07/09/2019 @ 08:54 AM



Flash Flood Potential Markers

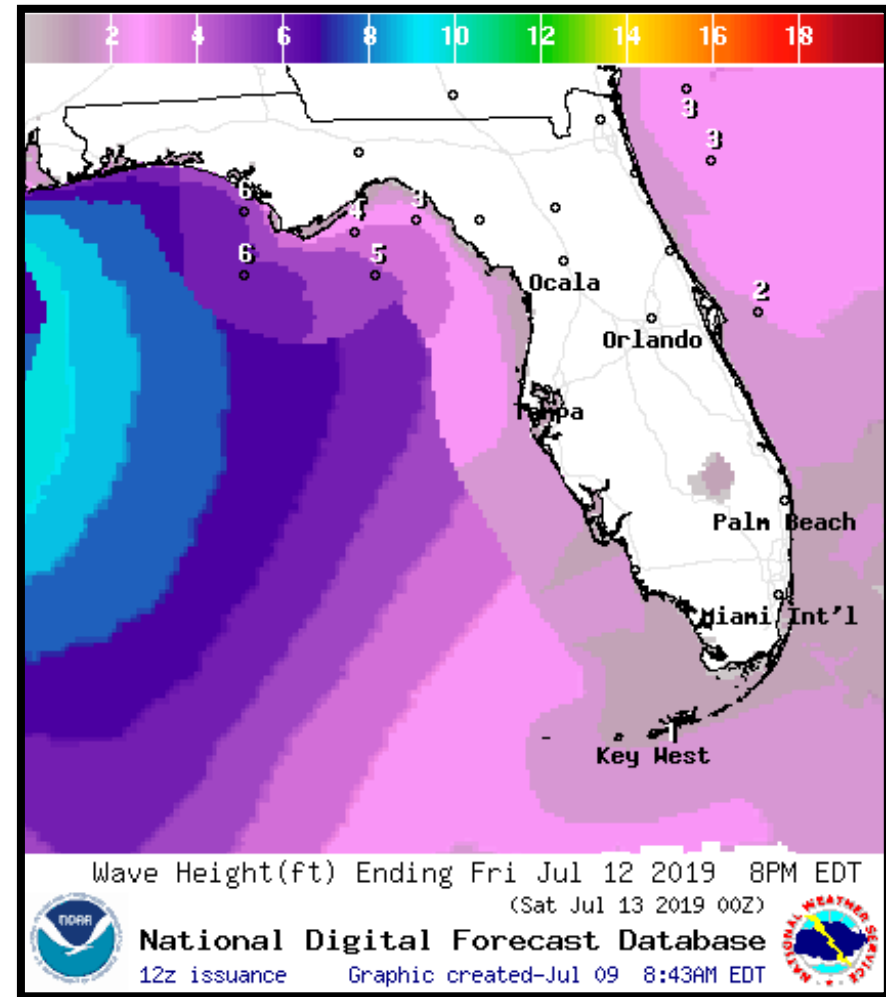
- In general, flash flooding could occur in the Panhandle if heavy rain in excess of 4-6" occurs in a short amount of time or 6-8" within a 24 hour period.
- The Peninsula is more vulnerable to flash flooding at this time and could take as little as 3-5" to produce issues.

Forecast Wave Heights (feet) – Thursday & Friday



Thursday

High surf, a high risk of life-threatening rip currents, and some minor beach erosion will be likely in the Panhandle late week.



Friday

Summary

- A non-tropical weather system currently located over the Florida Big Bend is moving south towards the Gulf of Mexico.
- Once the system moves over the Gulf of Mexico later today, it will gradually become better organized. The system will likely become a tropical depression or storm Thursday or Friday.
- This system has a 50% (medium) chance of formation during the next 48 hours and an 80% (high) chance of formation during the next 5 days.
- While uncertainty remains (particularly until the system begins to organize over the Gulf tomorrow), models have come into better agreement on the track of the system since yesterday.
- After moving into the Gulf of Mexico later today, the system will drift westward towards Louisiana and Texas as it becomes a tropical storm.
- This weekend, the system will should move north into Texas or Louisiana.
- Potential Tropical Cyclone advisories may begin as early as tonight or Wednesday to improve lead times, even if the system hasn't finished developing.
- The next name on the list is Barry.
- There are no other areas of possible development in the Atlantic Basin for at least the next five days.

Florida Outlook:

- Regardless of development, scattered to numerous showers and thunderstorms are expected each day this week statewide.
- Widespread rainfall totals of 1-3" are forecast statewide with locally higher totals of 6" possible along the Gulf Coast.
- The best chance of heavy rain today will be along the West Coast of the Peninsula and Southeast Florida.
- The best chance of heavy rain tomorrow will be along the coast of the Panhandle and Big Bend and along the Nature Coast.
- An isolated case of flash flooding will be possible, particularly in urban areas with brief periods of ponding of water on roadways.
- It is too early to determine any other impacts, but they are appearing less likely.

The next briefing packet will be issued Wednesday morning. For the latest information on the tropics, please visit the National Hurricane Center website at www.hurricanes.gov.



TROPICAL UPDATE



Created by:

Michael Spagnolo, Deputy State Meteorologist

Michael.Spagnolo@em.myflorida.com

State Meteorological Support Unit

Florida Division of Emergency Management

Users wishing to subscribe (approval pending) to this distribution list, register at https://public.govdelivery.com/accounts/FLDEM/subscriber/new?topic_id=SERT_Met_Tropics. Other reports available for subscription are available at <https://public.govdelivery.com/accounts/FLDEM/subscriber/new?preferences=true>