



TROPICAL UPDATE



9 AM EDT

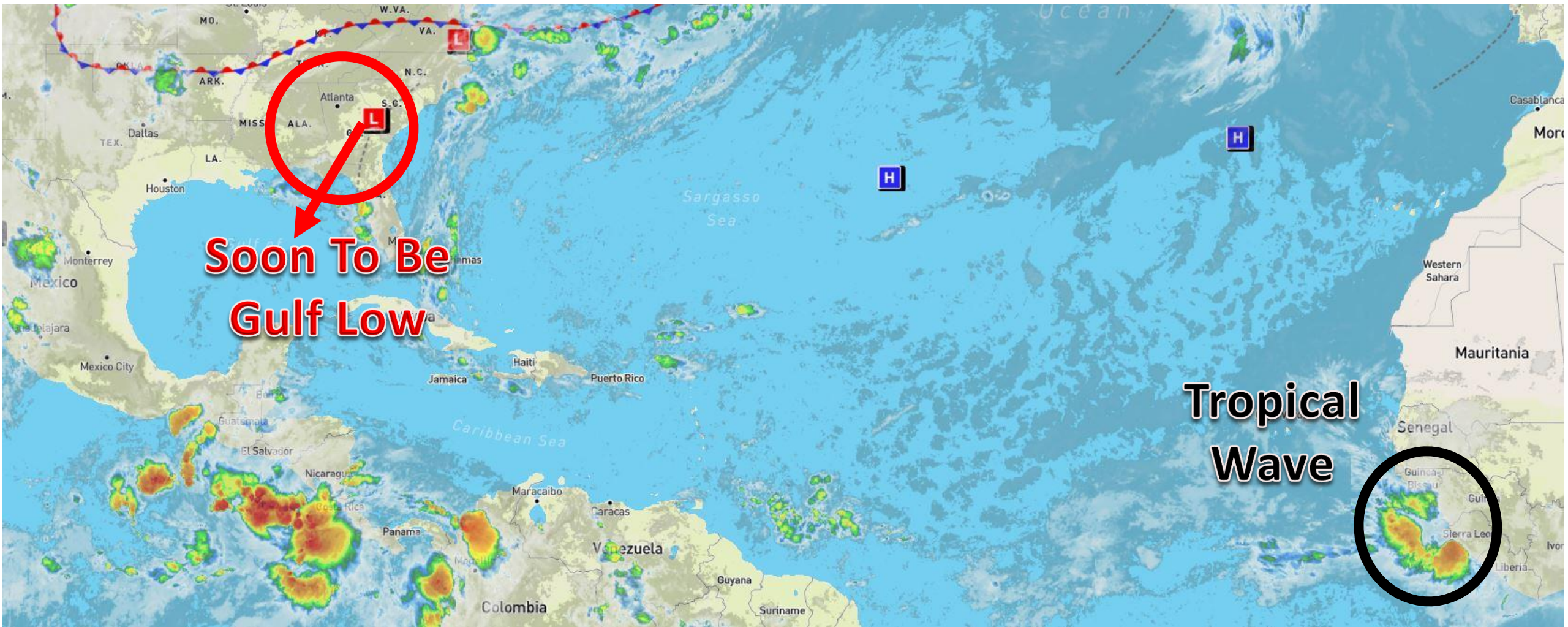
Monday, July 8, 2019

Northern Gulf Low (80%)

This update is intended for government and emergency response officials, and is provided for informational and situational awareness purposes only. Forecast conditions are subject to change based on a variety of environmental factors. For additional information, or for any life safety concerns with an active weather event please contact your County Emergency Management or Public Safety Office, local National Weather Service forecast office, or visit the National Hurricane Center website at www.hurricanes.gov.

Atlantic Basin Satellite Image

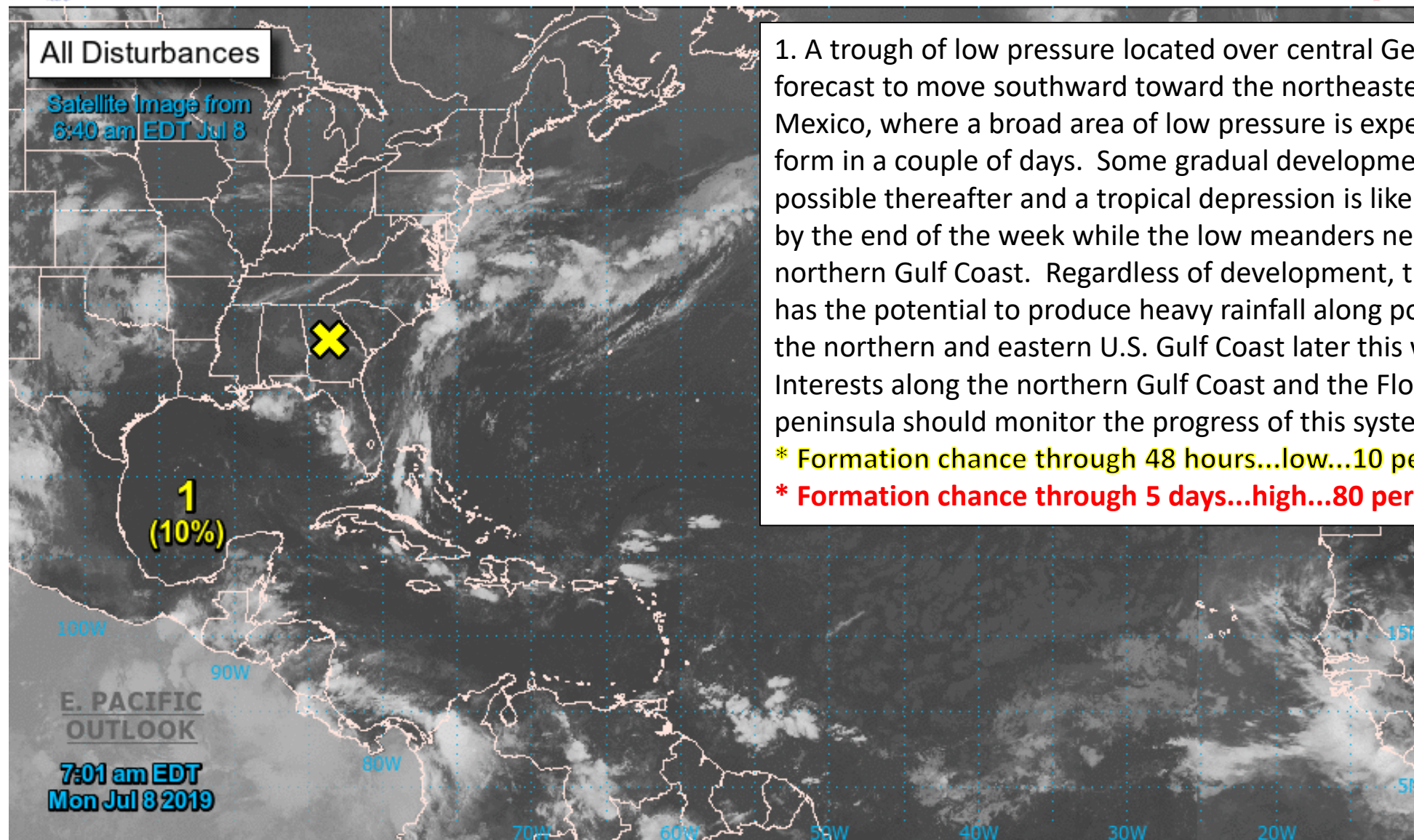
Chance of development: — None Low Medium High





Two-Day Graphical Tropical Weather Outlook

National Hurricane Center Miami, Florida



1. A trough of low pressure located over central Georgia is forecast to move southward toward the northeastern Gulf of Mexico, where a broad area of low pressure is expected to form in a couple of days. Some gradual development is possible thereafter and a tropical depression is likely to form by the end of the week while the low meanders near the northern Gulf Coast. Regardless of development, this system has the potential to produce heavy rainfall along portions of the northern and eastern U.S. Gulf Coast later this week. Interests along the northern Gulf Coast and the Florida peninsula should monitor the progress of this system.

* Formation chance through 48 hours...low...10 percent.

* Formation chance through 5 days...high...80 percent.

Current Disturbances and Two-Day Cyclone Formation Chance: < 40% 40-60% > 60%

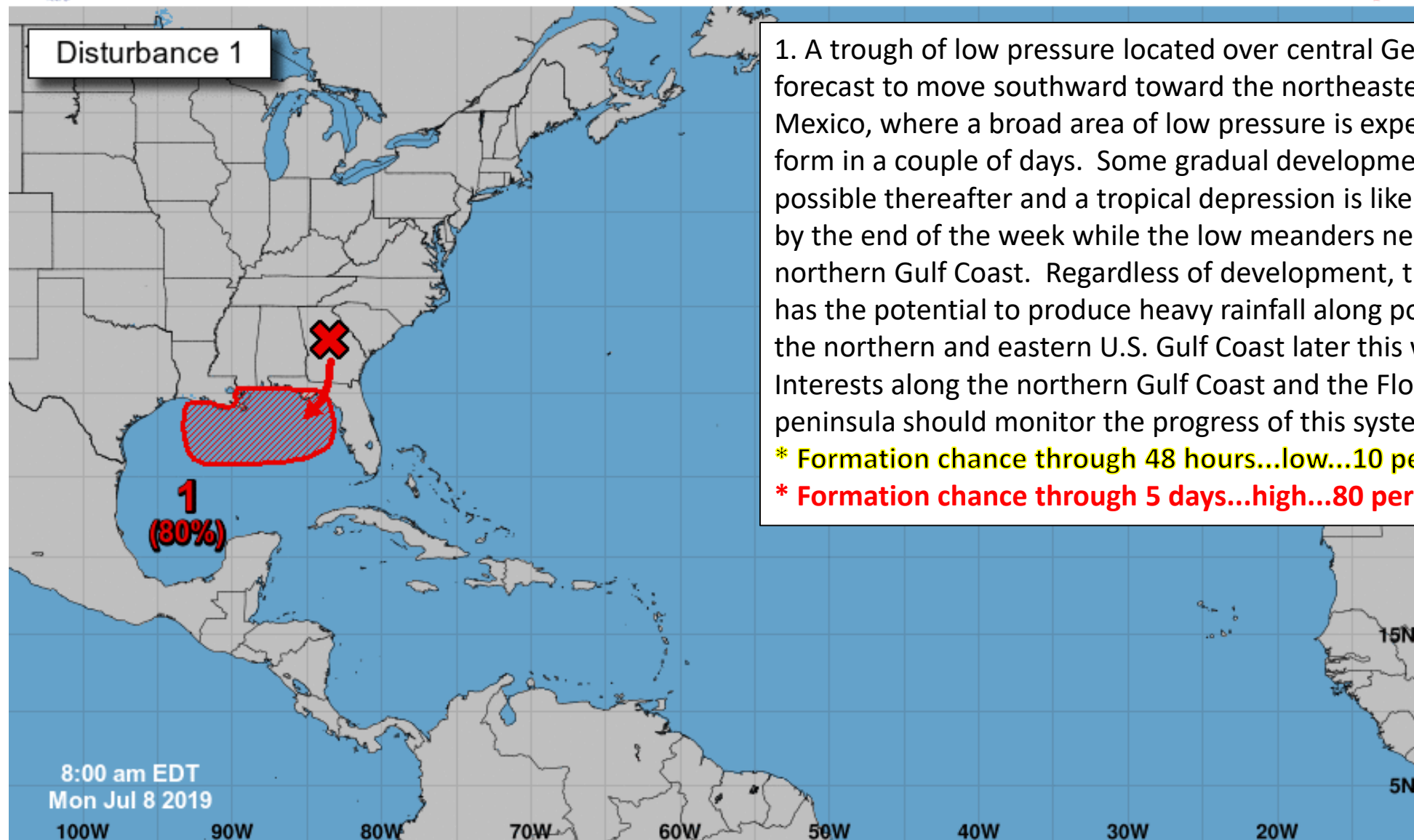
Tropical or Sub-Tropical Cyclone: Depression Storm Hurricane

Post-Tropical Cyclone or Remnants



Five-Day Graphical Tropical Weather Outlook

National Hurricane Center Miami, Florida



1. A trough of low pressure located over central Georgia is forecast to move southward toward the northeastern Gulf of Mexico, where a broad area of low pressure is expected to form in a couple of days. Some gradual development is possible thereafter and a tropical depression is likely to form by the end of the week while the low meanders near the northern Gulf Coast. Regardless of development, this system has the potential to produce heavy rainfall along portions of the northern and eastern U.S. Gulf Coast later this week. Interests along the northern Gulf Coast and the Florida peninsula should monitor the progress of this system.

* Formation chance through 48 hours...low...10 percent.

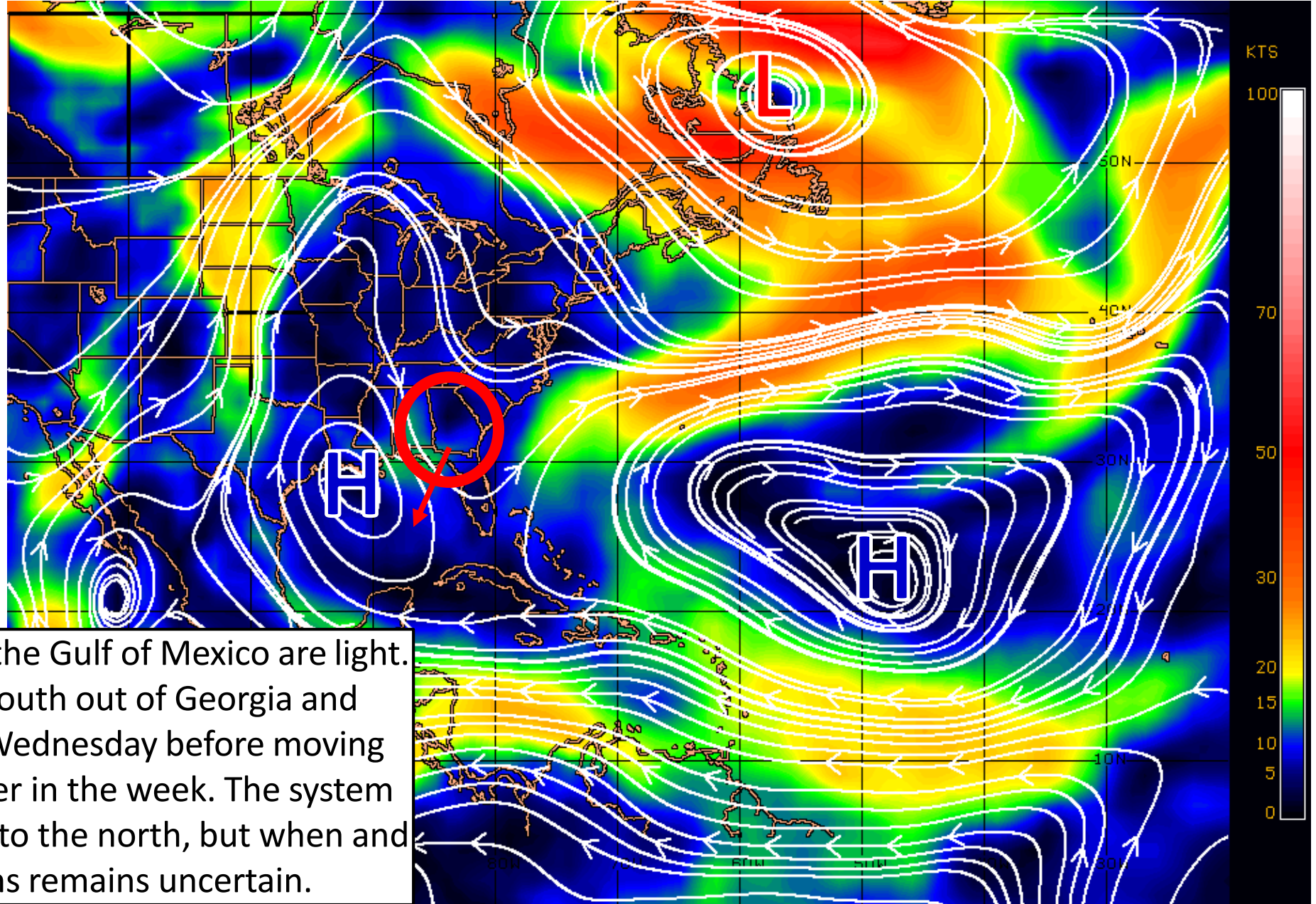
* Formation chance through 5 days...high...80 percent.

Current Disturbances and Five-Day Cyclone Formation Chance: < 40% 40-60% > 60%

Tropical or Sub-Tropical Cyclone: Depression Storm Hurricane

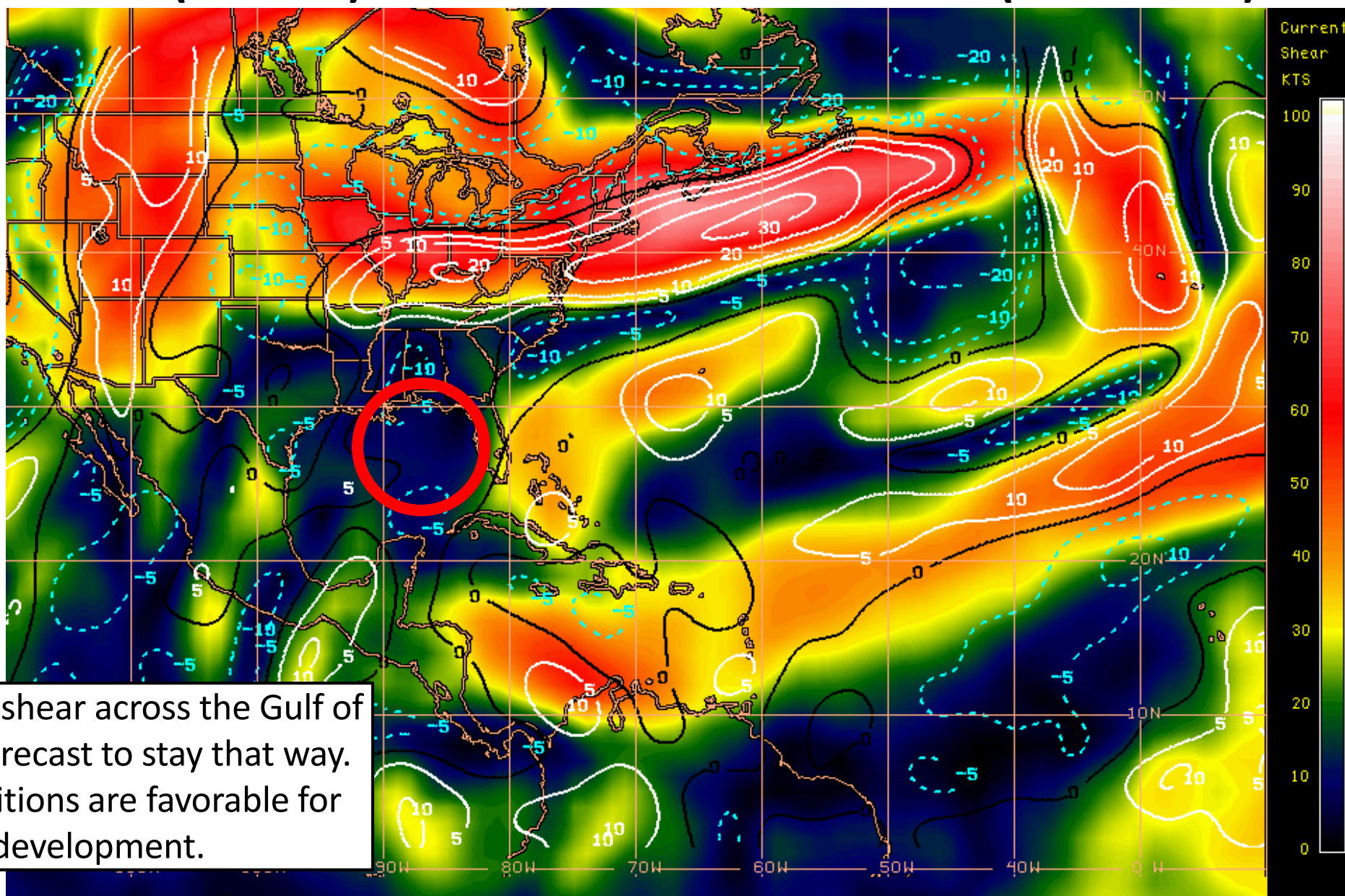
Post-Tropical Cyclone or Remnants

Steering Currents



Steering currents across the Gulf of Mexico are light. The system will drift south out of Georgia and Alabama Tuesday and Wednesday before moving west along the coast later in the week. The system will eventually turn back to the north, but when and where that happens remains uncertain.

Wind Shear (shaded) and Wind Shear Tendencies (contoured)



There is little wind shear across the Gulf of Mexico and it is forecast to stay that way. Upper-level conditions are favorable for gradual development.

Shear Tendency (KTS) Over Past 24 Hours: Increasing — Decreasing ----

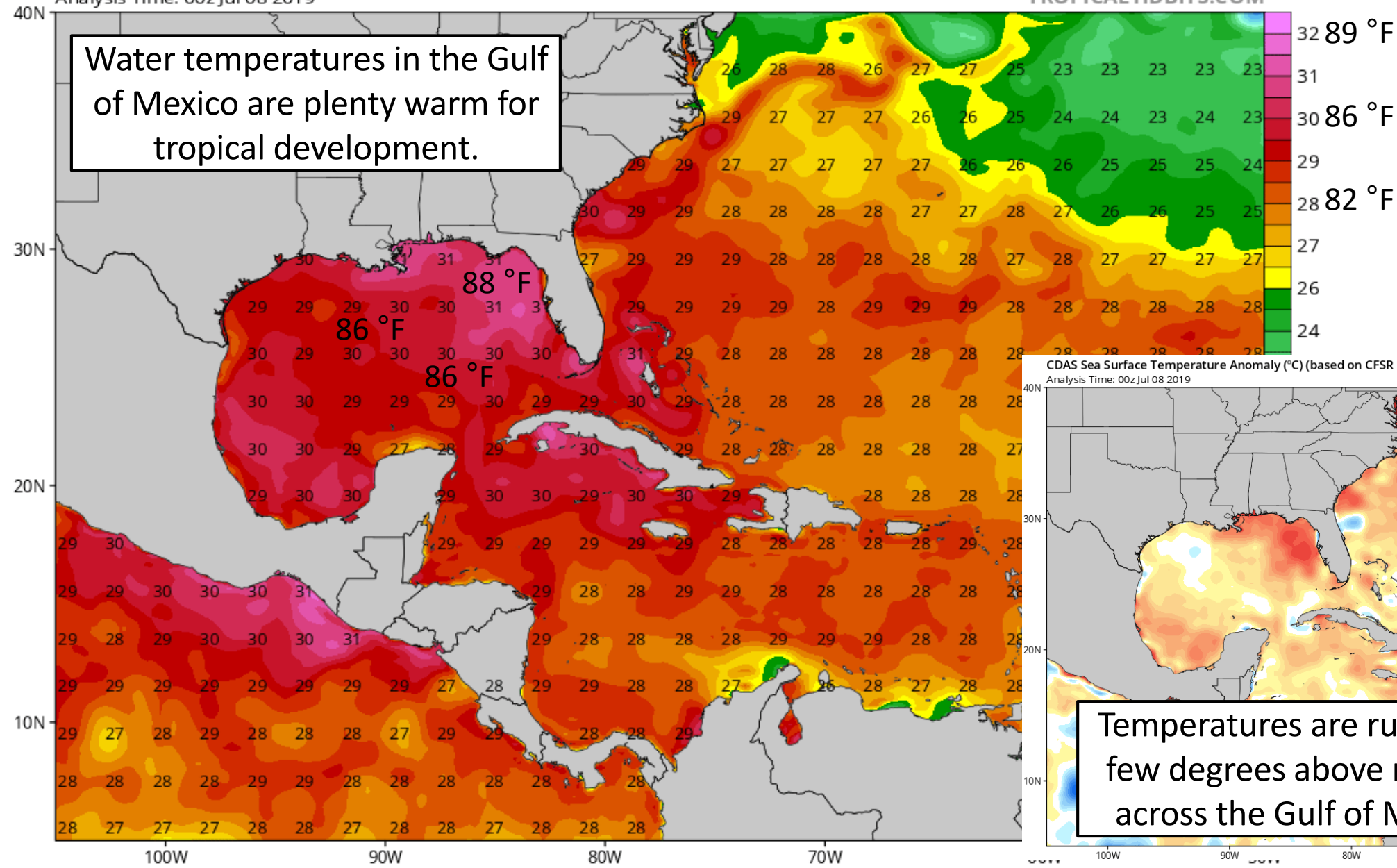
Current Sea Surface Temperatures

CDAS Sea Surface Temperature (°C)

Analysis Time: 00z Jul 08 2019

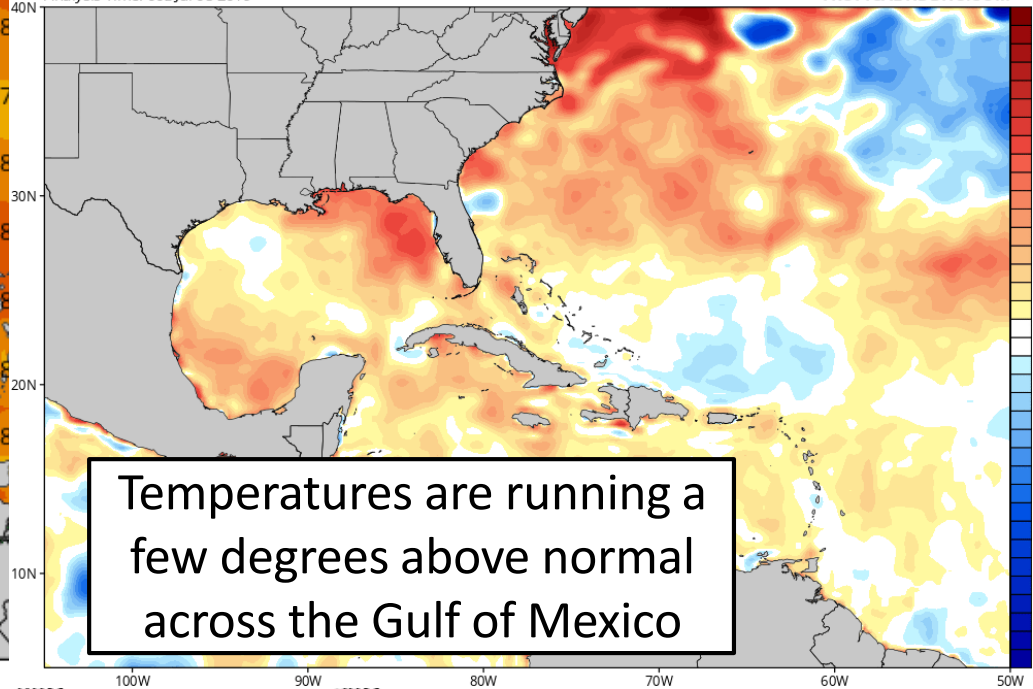
TROPICALTIDBITS.COM

Water temperatures in the Gulf of Mexico are plenty warm for tropical development.



CDAS Sea Surface Temperature Anomaly (°C) (based on CFSR 1981-2010 Climatology)
Analysis Time: 00z Jul 08 2019

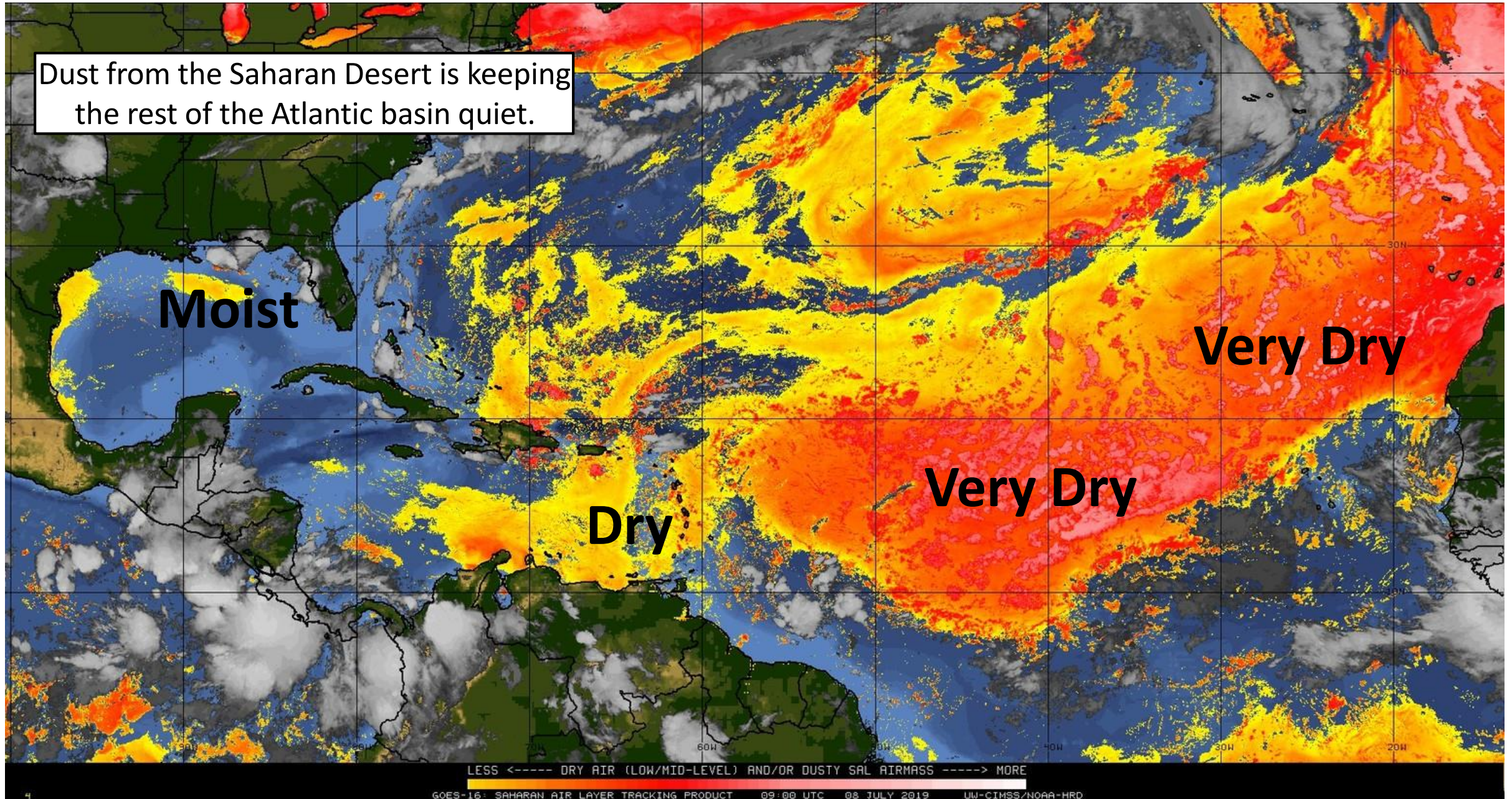
TROPICALTIDBITS.COM



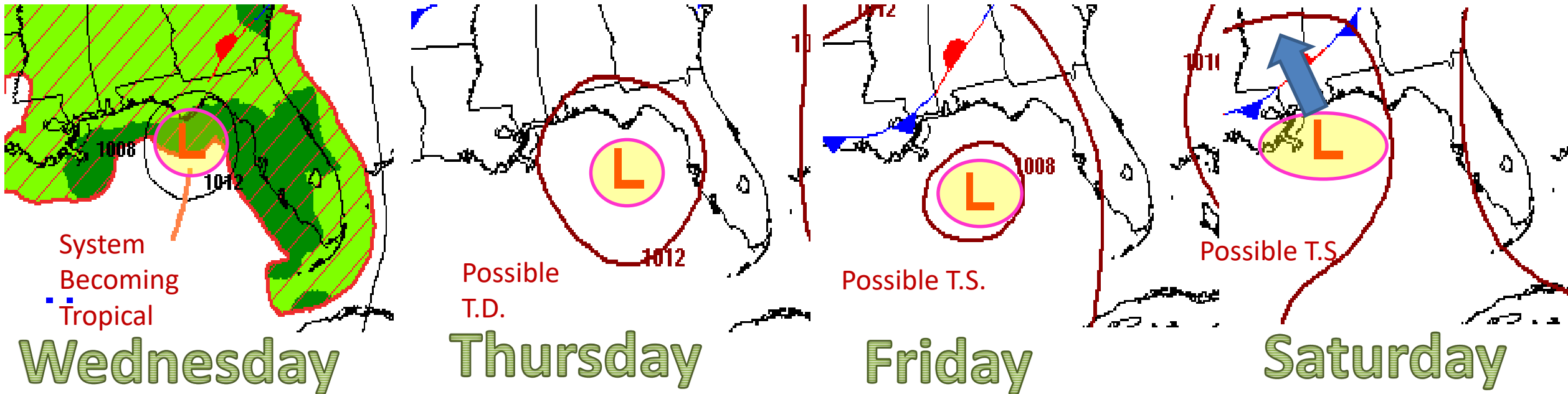
Temperatures are running a few degrees above normal across the Gulf of Mexico

Dry Air & Saharan Dust

Dust from the Saharan Desert is keeping the rest of the Atlantic basin quiet.



Forecast Weather Maps (fronts)



A cold front and an associated area of low pressure will stall out across the northern Gulf of Mexico. As the system meanders over water it will gradually acquire tropical characteristics, and may become a tropical depression or tropical storm by Friday. The system will eventually drift northwest into the northern Gulf Coast as another cold front approaches over the weekend. If the next front moves slower or the low moves westward faster than anticipated, a more western track to Louisiana or Texas is possible. HOWEVER, impacts to Florida in the form of heavy rainfall will begin to occur on Wednesday, especially for the western and northern Peninsula, with heavy rain spreading to the Panhandle in the Thursday night – Sunday timeframe.

Cumulative Rainfall Total Next 7-Days

A widespread 3-6" is expected along much of the Florida Gulf Coast this week.

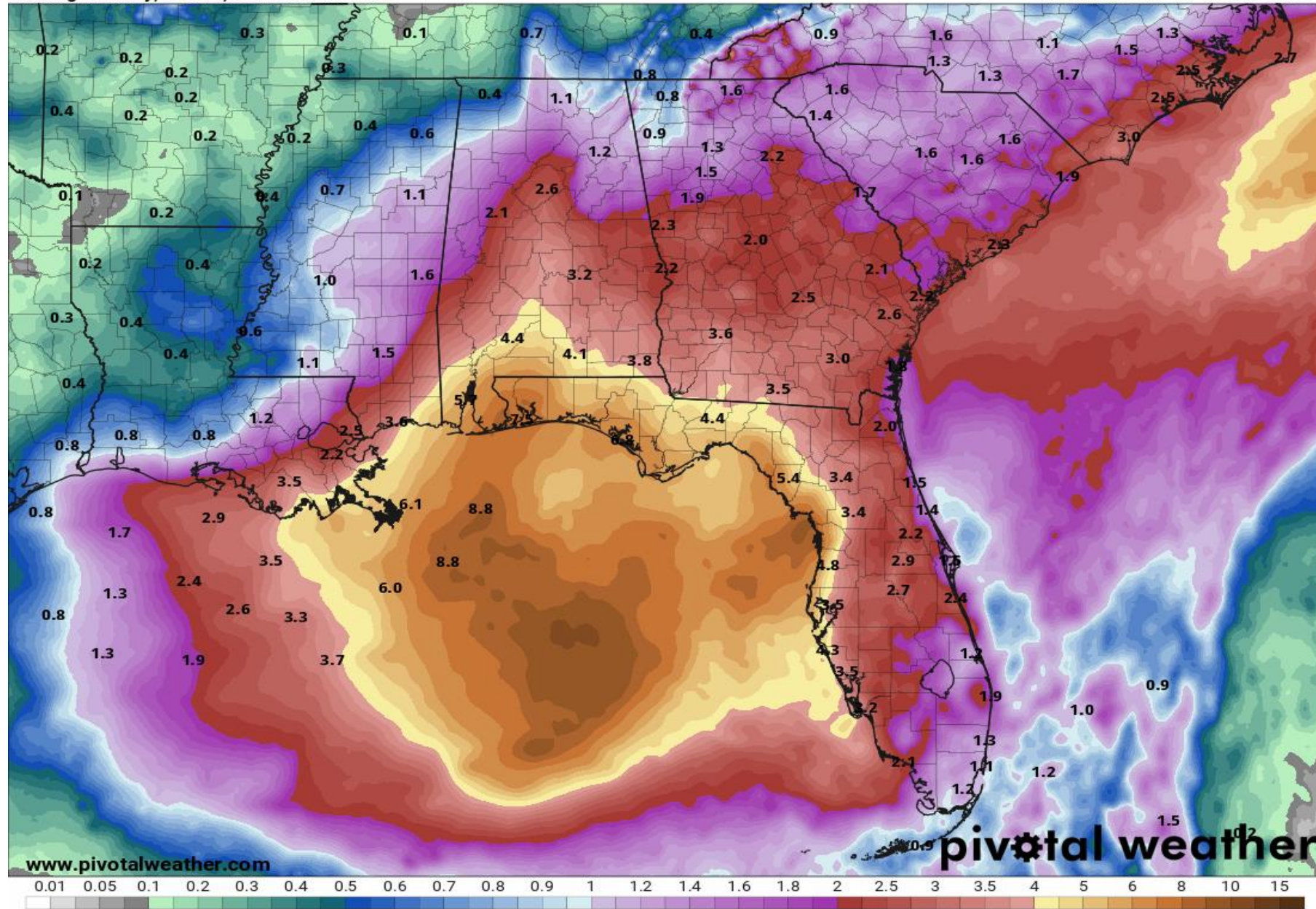
***THIS DOES NOT INCLUDE LOCALLY HIGHER TOTALS* which could be as high as 12" depending on track**

The greatest rainfall threat will vary from day to day and location to location depending on the exact development of the system.

All Florida rivers are well below flood stage. Drought conditions continue across inland Northwest Florida.

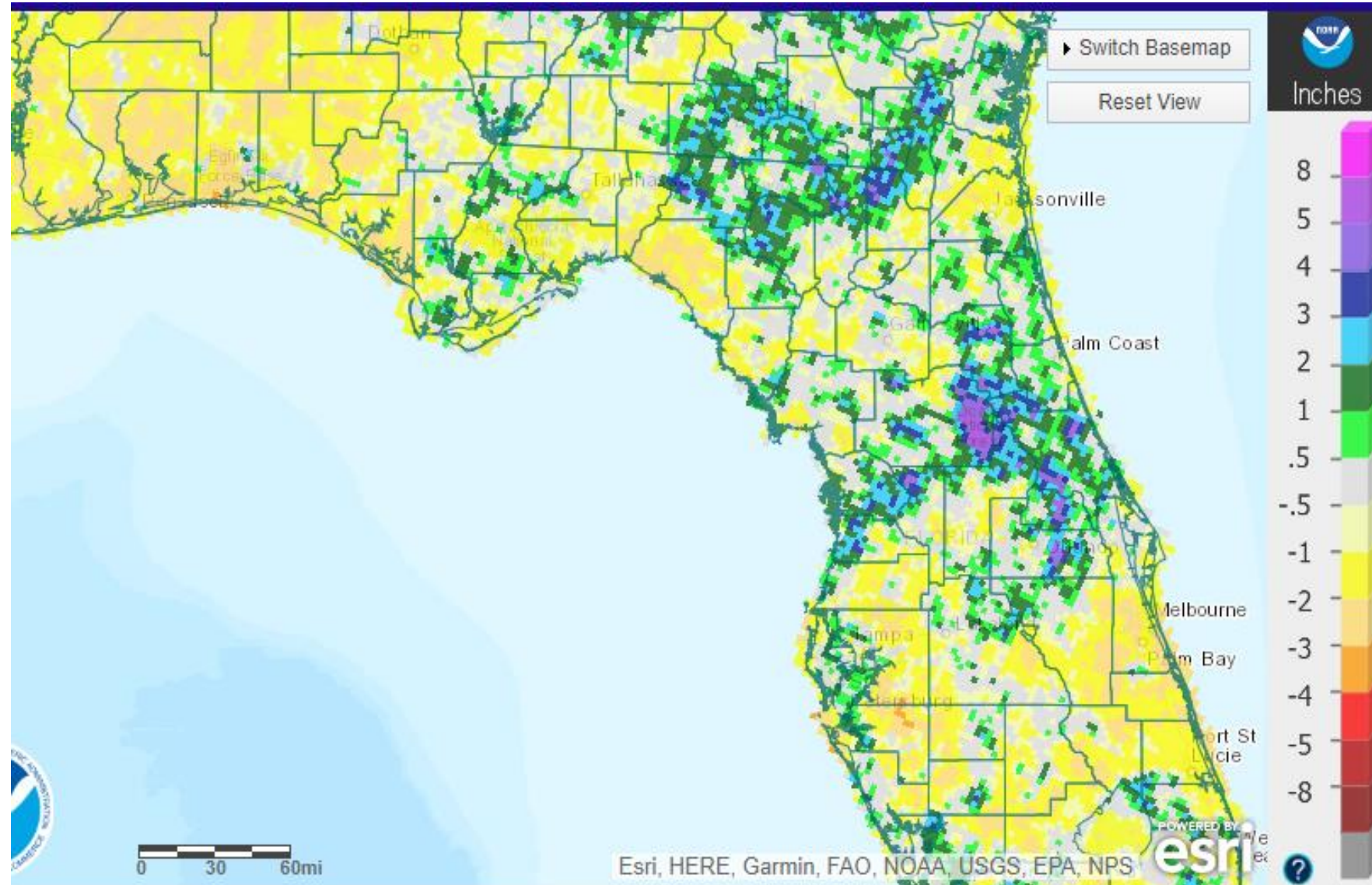
7-Day Precipitation (in)
Ending Monday, Jul. 15, 2019 at 8 a.m. EDT

Init: Mon 2019-07-08 12z WPC

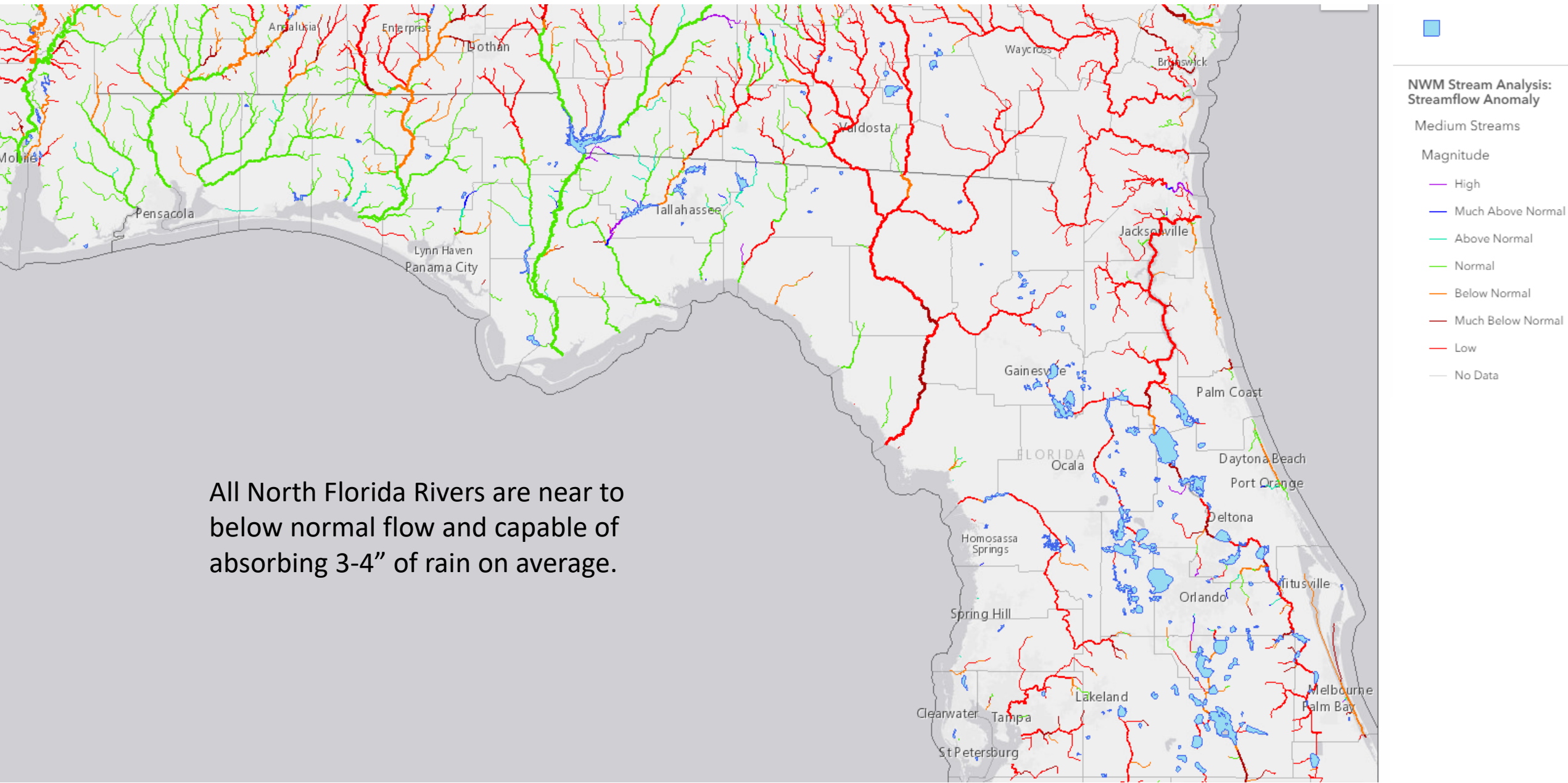


Rainfall Departure from Normal for Past 2 Weeks

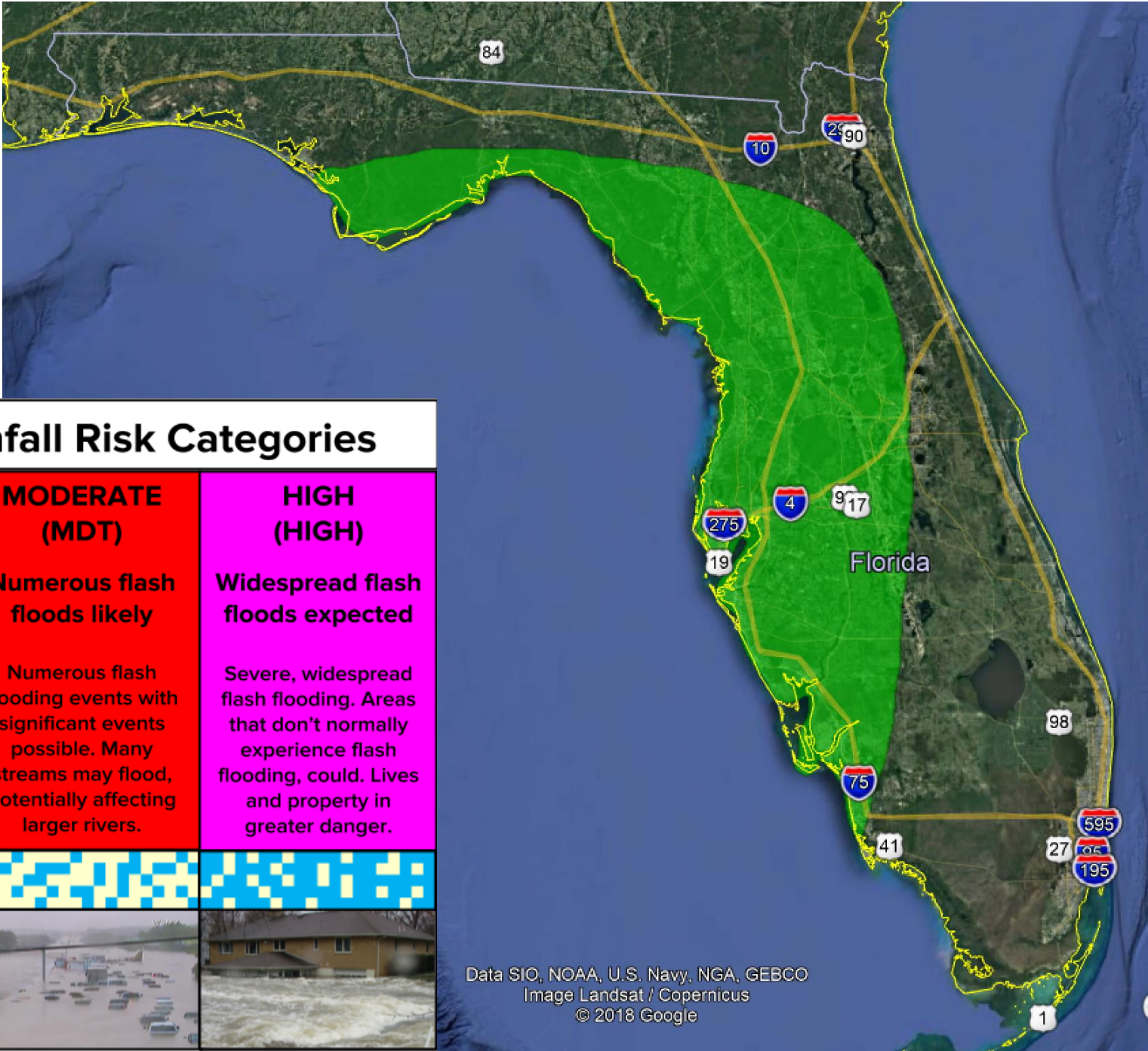
- Much of the Panhandle is in a rainfall deficit and capable of absorbing more rainfall.
- Heavy rain over the eastern Big Bend and northern Peninsula could produce flooding issues at lower rain values.



National Water Model Stream Flow Anomalies



- There is a marginal risk of excessive rainfall that could lead to some flash flooding along the Gulf Coast on Wednesday.
- Additional flooding impacts to the Panhandle would likely occur in the Thursday-Sunday timeframe.



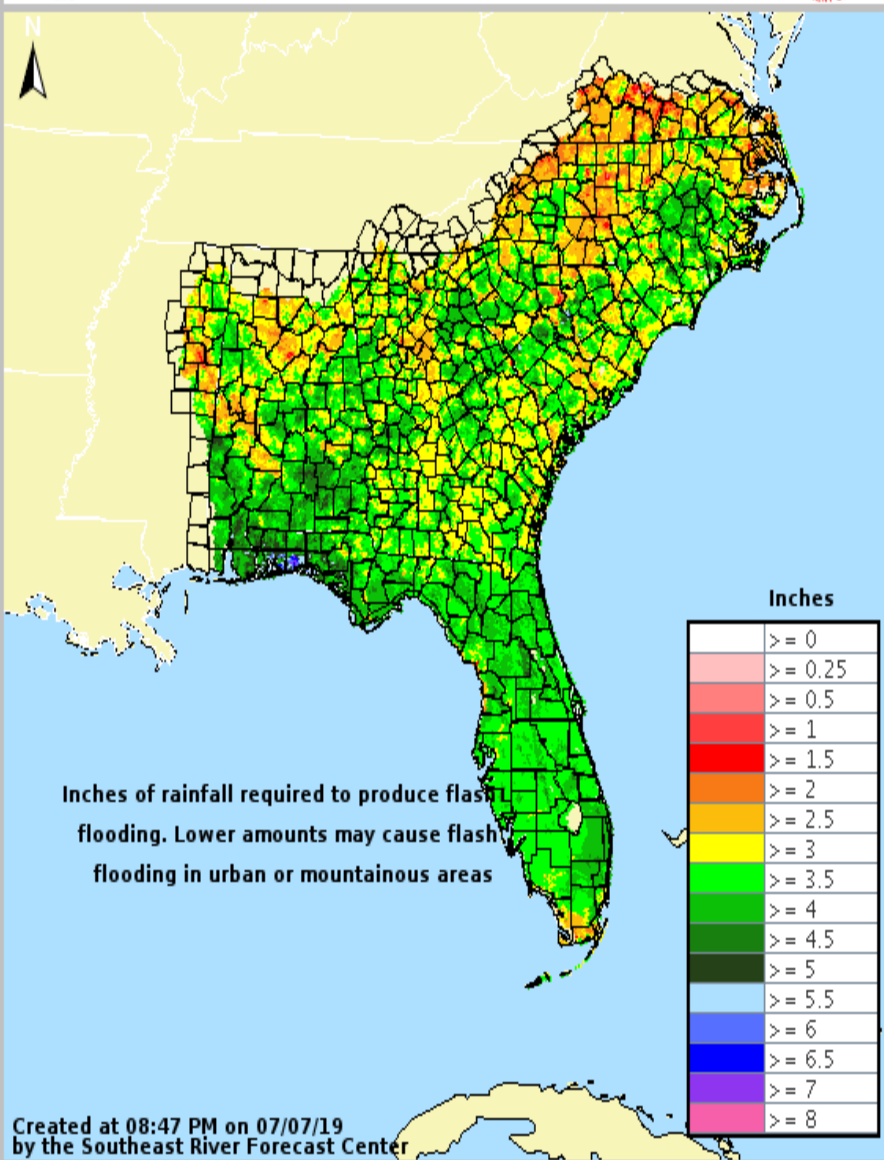
Understanding WPC Excessive Rainfall Risk Categories				
No Area/Label	MARGINAL (MRGL)	SLIGHT (SLGT)	MODERATE (MDT)	HIGH (HIGH)
Flash floods are generally not expected.	Isolated flash floods possible	Scattered flash floods possible	Numerous flash floods likely	Widespread flash floods expected
	Localized and primarily affecting places that can experience rapid runoff with heavy rainfall.	Mainly localized. Most vulnerable are urban areas, roads, small streams and washes. Isolated significant flash floods possible.	Numerous flash flooding events with significant events possible. Many streams may flood, potentially affecting larger rivers.	Severe, widespread flash flooding. Areas that don't normally experience flash flooding, could. Lives and property in greater danger.
www.wpc.ncep.noaa.gov @NWSWPC				
Flash flooding near me?	Flash Flooding			
	NO Flash Flooding			
 WEATHER PREDICTION CENTER				

Data SIO, NOAA, U.S. Navy, NGA, GEBCO
Image Landsat / Copernicus
© 2018 Google



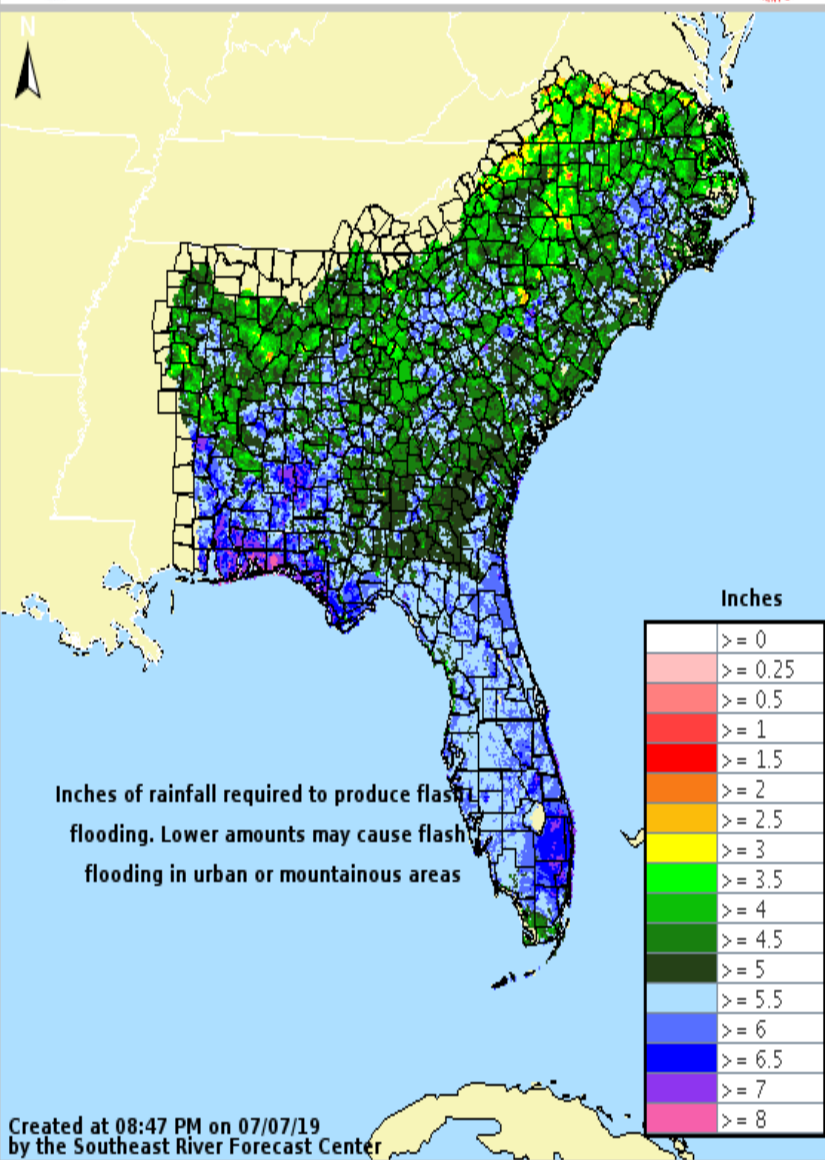
3-hr Flash Flood Guidance

Valid: 07/07/2019 @ 08:47 PM



12-hr Flash Flood Guidance

Valid: 07/07/2019 @ 08:47 PM



Flash Flood Potential Markers

- In general, flash flooding could occur in the Panhandle if heavy rain in excess of 4-6" occurs in a short amount of time or 6-8" within a 24 hour period.
- The Peninsula is more vulnerable to flash flooding at this time and could take as little as 3-5" to produce issues.

Summary

- A non-tropical weather system currently located over Georgia is moving south towards the Gulf of Mexico.
- By Wednesday, the system will stall over the warm waters of the northeastern Gulf of Mexico.
- The system will gradually become better organized and will likely become a tropical depression or storm Thursday or Friday.
- This system has a 10% (low) chance of formation during the next 48 hours but an 80% (high) chance of formation during the next 5 days.
- There are a lot of uncertainties with this system and the exact track and intensity is unknown. Once the system emerges over the Gulf Tuesday night and Wednesday, details will become more clear.
- In general, the system will reach tropical storm strength. If it moves further west towards Louisiana and Texas, it could be stronger, but would bring less impacts to Florida.
- Potential Tropical Cyclone advisories may begin as early as Tuesday night or Wednesday to improve lead times, even if the system has finished developing.
- The next name on the list is Barry.
- There are no other areas of possible development in the Atlantic Basin for at least the next five days.

Florida Outlook:

- Regardless of development, scattered to numerous showers and thunderstorms are expected each day this week statewide.
- Widespread rainfall totals of 3-6" are forecast along the Gulf Coast over the next 7 days with locally higher totals of 12".
- Across the Panhandle river levels are low due to ongoing drought conditions. However, flash flooding could still be a threat.
- It is too early to determine any other impacts.

The next briefing packet will be issued Tuesday morning. For the latest information on the tropics, please visit the National Hurricane Center website at www.hurricanes.gov.



TROPICAL UPDATE



Created by:

Amy Godsey, Chief State Meteorologist

Amy.Godsey@em.myflorida.com

Michael Spagnolo, Deputy State Meteorologist

Michael.Spagnolo@em.myflorida.com

State Meteorological Support Unit

Florida Division of Emergency Management

Users wishing to subscribe (approval pending) to this distribution list, register at https://public.govdelivery.com/accounts/FLDEM/subscriber/new?topic_id=SERT_Met_Tropics.

Other reports available for subscription are available at <https://public.govdelivery.com/accounts/FLDEM/subscriber/new?preferences=true>