



TROPICAL UPDATE



11 AM EDT

Sunday, July 7, 2019

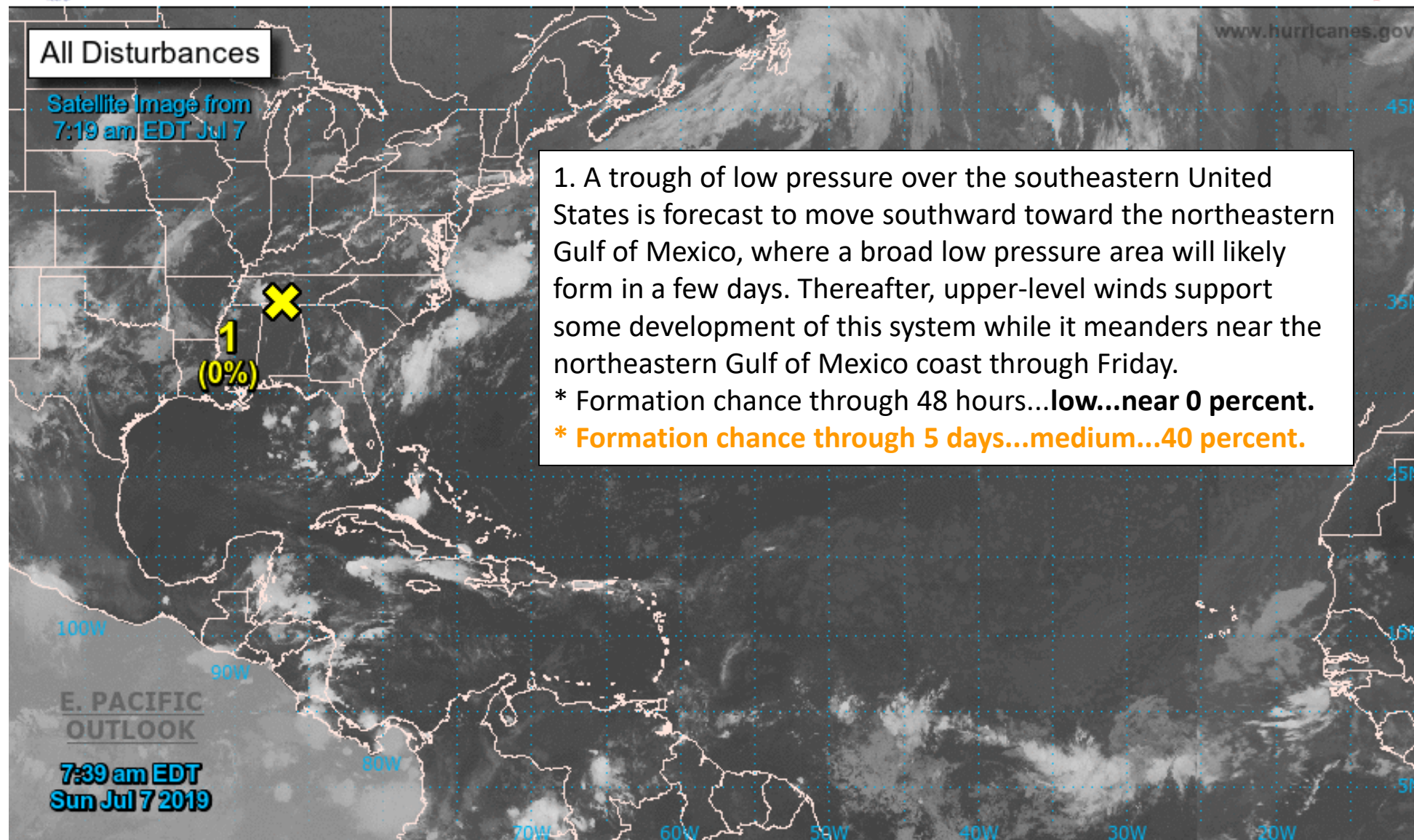
Northern Gulf Low (40%)

This update is intended for government and emergency response officials, and is provided for informational and situational awareness purposes only. Forecast conditions are subject to change based on a variety of environmental factors. For additional information, or for any life safety concerns with an active weather event please contact your County Emergency Management or Public Safety Office, local National Weather Service forecast office, or visit the National Hurricane Center website at www.hurricanes.gov.



Two-Day Graphical Tropical Weather Outlook

National Hurricane Center Miami, Florida



1. A trough of low pressure over the southeastern United States is forecast to move southward toward the northeastern Gulf of Mexico, where a broad low pressure area will likely form in a few days. Thereafter, upper-level winds support some development of this system while it meanders near the northeastern Gulf of Mexico coast through Friday.

* Formation chance through 48 hours...**low...near 0 percent.**

* **Formation chance through 5 days...medium...40 percent.**

Current Disturbances and Two-Day Cyclone Formation Chance:

✕ < 40%

✕ 40-60%

✕ > 60%

Tropical or Sub-Tropical Cyclone: ○ Depression

⬮ Storm

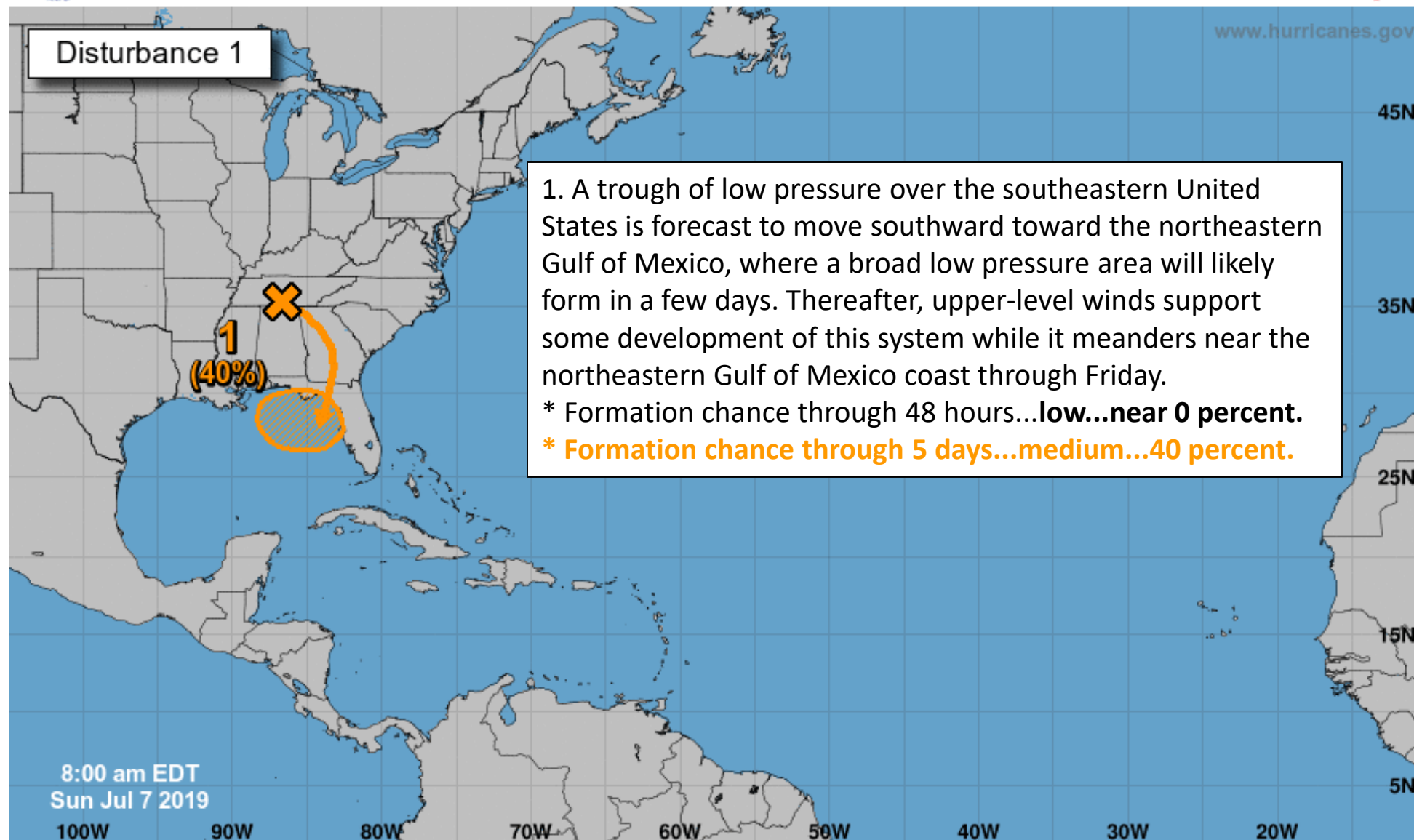
⬮ Hurricane

⊗ Post-Tropical Cyclone or Remnants



Five-Day Graphical Tropical Weather Outlook

National Hurricane Center Miami, Florida



Current Disturbances and Five-Day Cyclone Formation Chance: < 40% 40-60% > 60%

Tropical or Sub-Tropical Cyclone: Depression Storm Hurricane

Post-Tropical Cyclone or Remnants

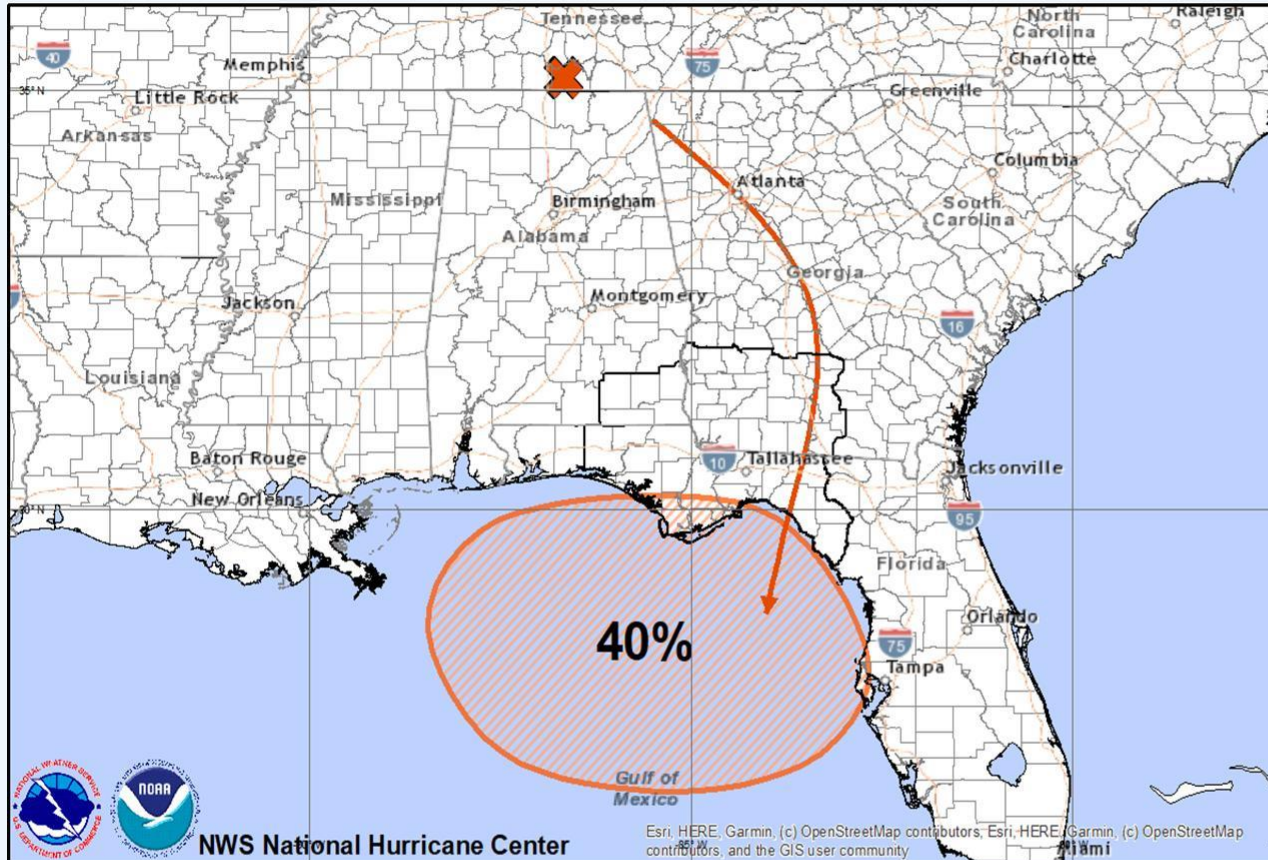
Monitoring Tropical Development

5 Day Tropical Weather Outlook (National Hurricane Center)

Weather Forecast Office

Tallahassee

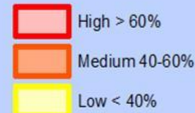
Issued July 7, 2019 8:27 AM ET



Tropical Weather Outlook Five Day Formation Chances

Sunday July 07, 2019
07:40 AM ET

NWS National Hurricane Center



X indicates disturbance location;
shading indicates potential formation area.

Summary

- An area of low pressure will drift south into the Gulf in the next few days.
- Regardless of any tropical development, widespread heavy rain is anticipated beginning mid-week.
- Stay informed with the latest forecasts from the NWS/NHC. Visit [ready.gov/hurricanes](https://www.ready.gov/hurricanes) for preparedness information.

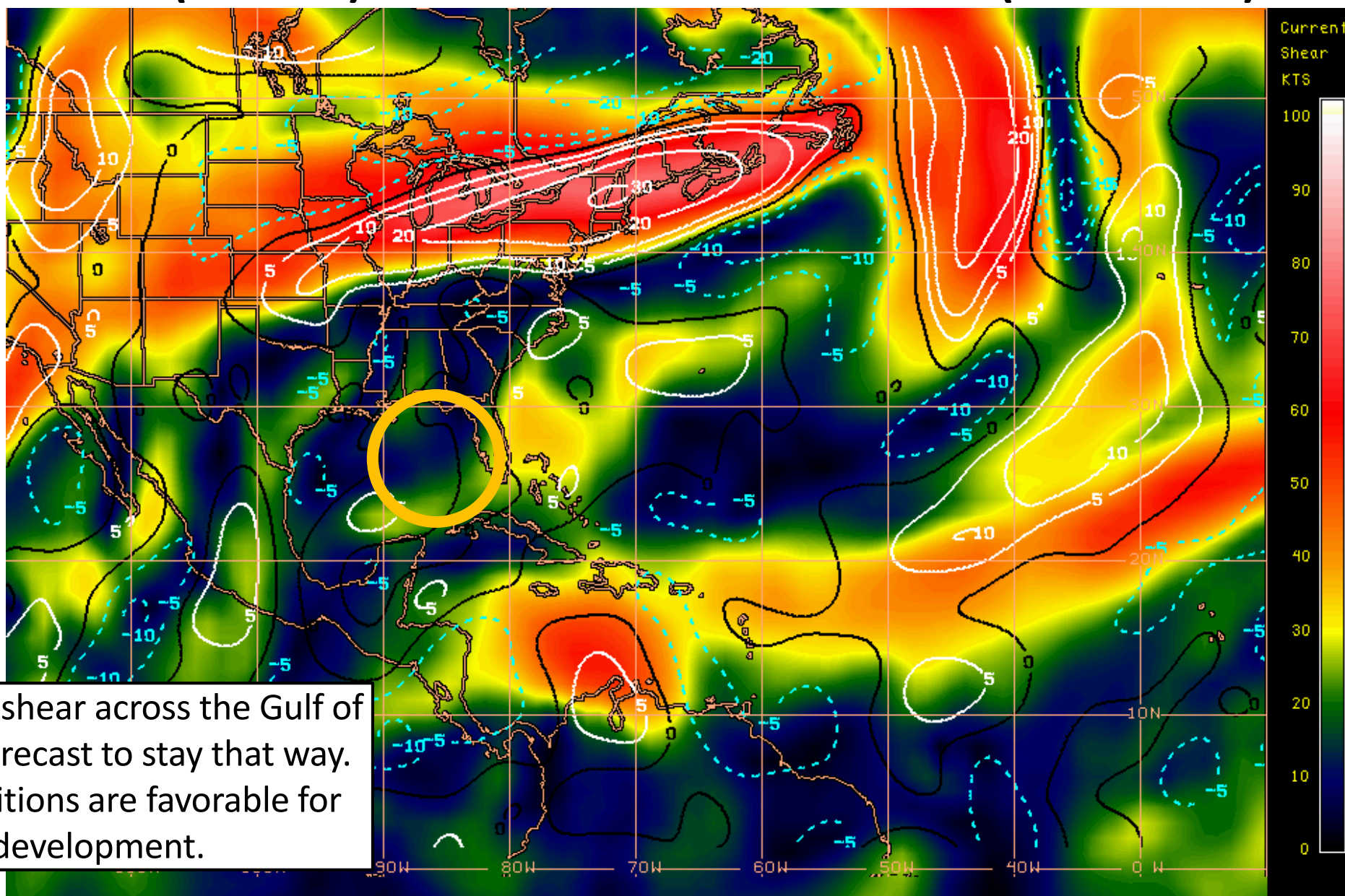
Reminder: This graphic does not depict the impacts of such tropical development and it's too early for specific impacts. Stay tuned to official sources as more information becomes clear.



NWSTallahassee

weather.gov/tallahassee

Wind Shear (shaded) and Wind Shear Tendencies (contoured)



There is little wind shear across the Gulf of Mexico and it is forecast to stay that way. Upper-level conditions are favorable for gradual development.

Shear Tendency (KTS) Over Past 24 Hours: Increasing ——— Decreasing - - - -

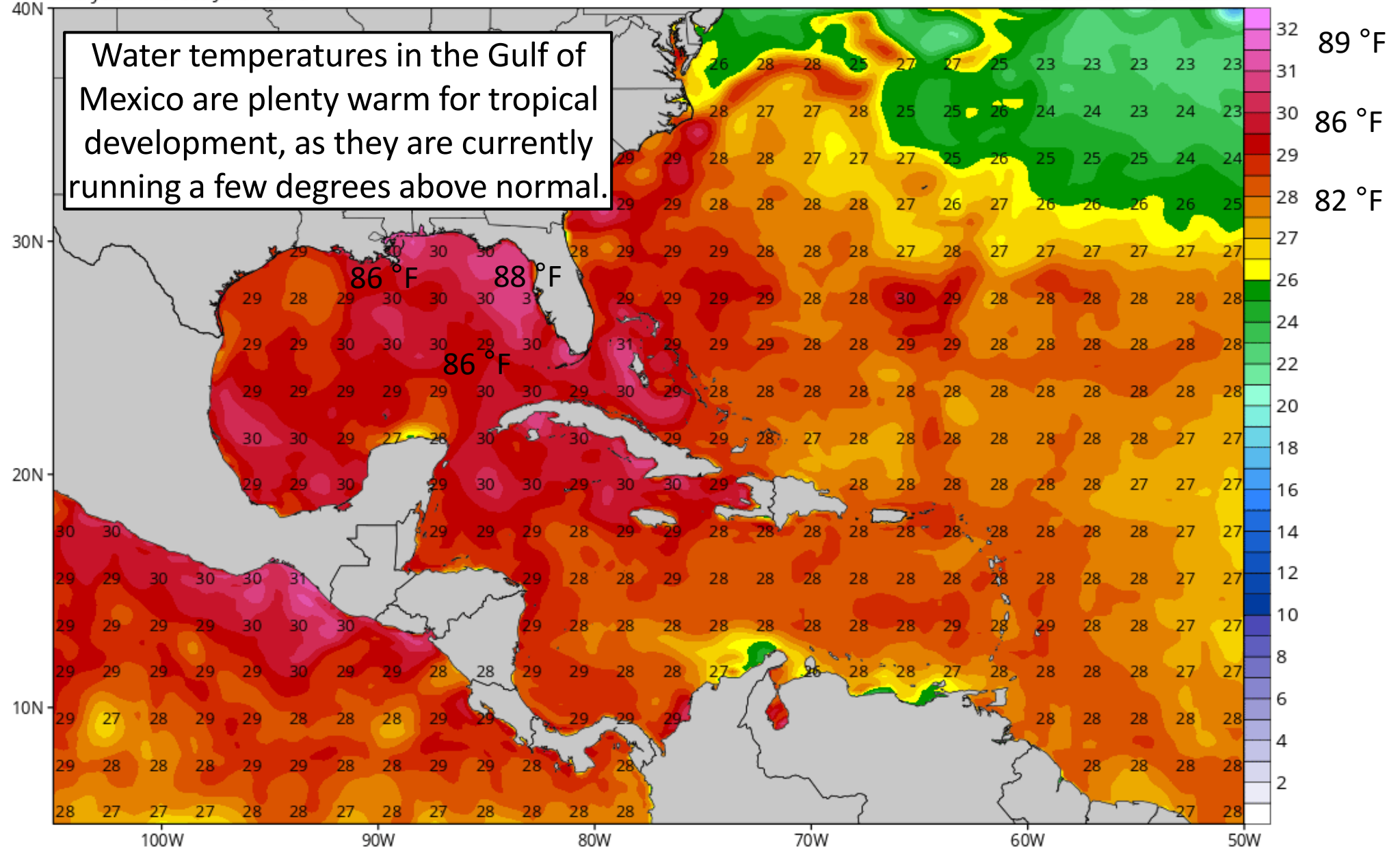
Current Sea Surface Temperatures

CDAS Sea Surface Temperature (°C)

Analysis Time: 06z Jul 07 2019

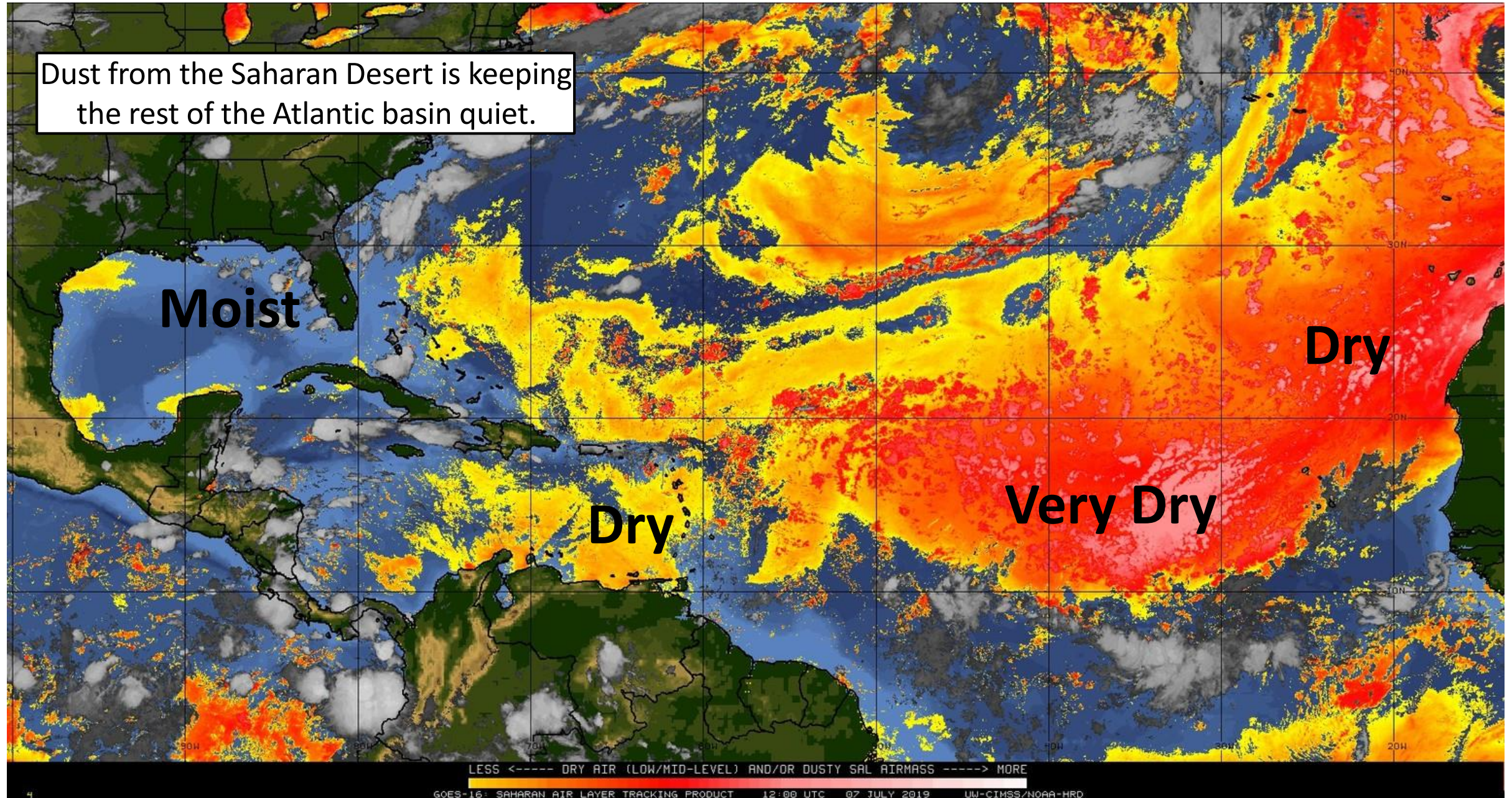
TROPICALTIDBITS.COM

Water temperatures in the Gulf of Mexico are plenty warm for tropical development, as they are currently running a few degrees above normal.

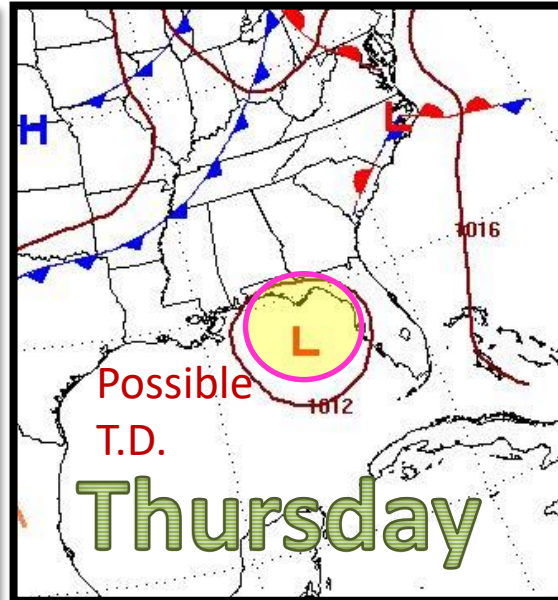
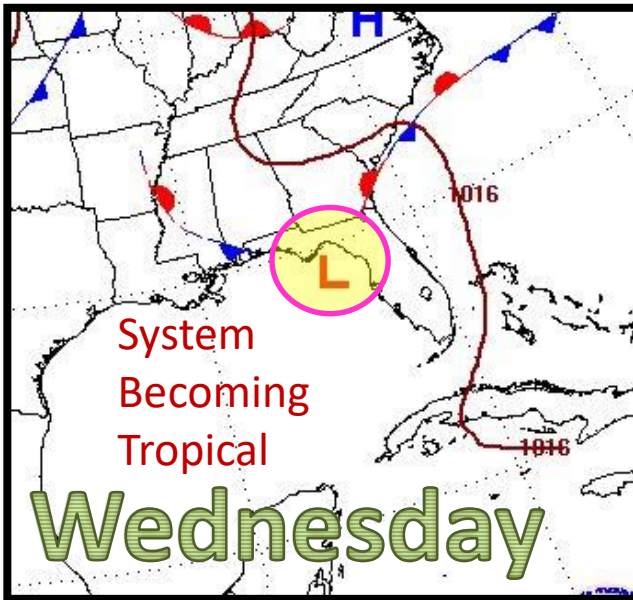


Dry Air & Saharan Dust

Dust from the Saharan Desert is keeping the rest of the Atlantic basin quiet.



Forecast Weather Maps (fronts)



A cold front and an associated area of low pressure will stall out across North Florida and the northeastern Gulf of Mexico. As the system meanders over water it will gradually acquire tropical characteristics, and may become a tropical depression or tropical storm late in the week. The system will eventually drift north or northwest into the northern Gulf Coast as another cold front approaches next weekend.

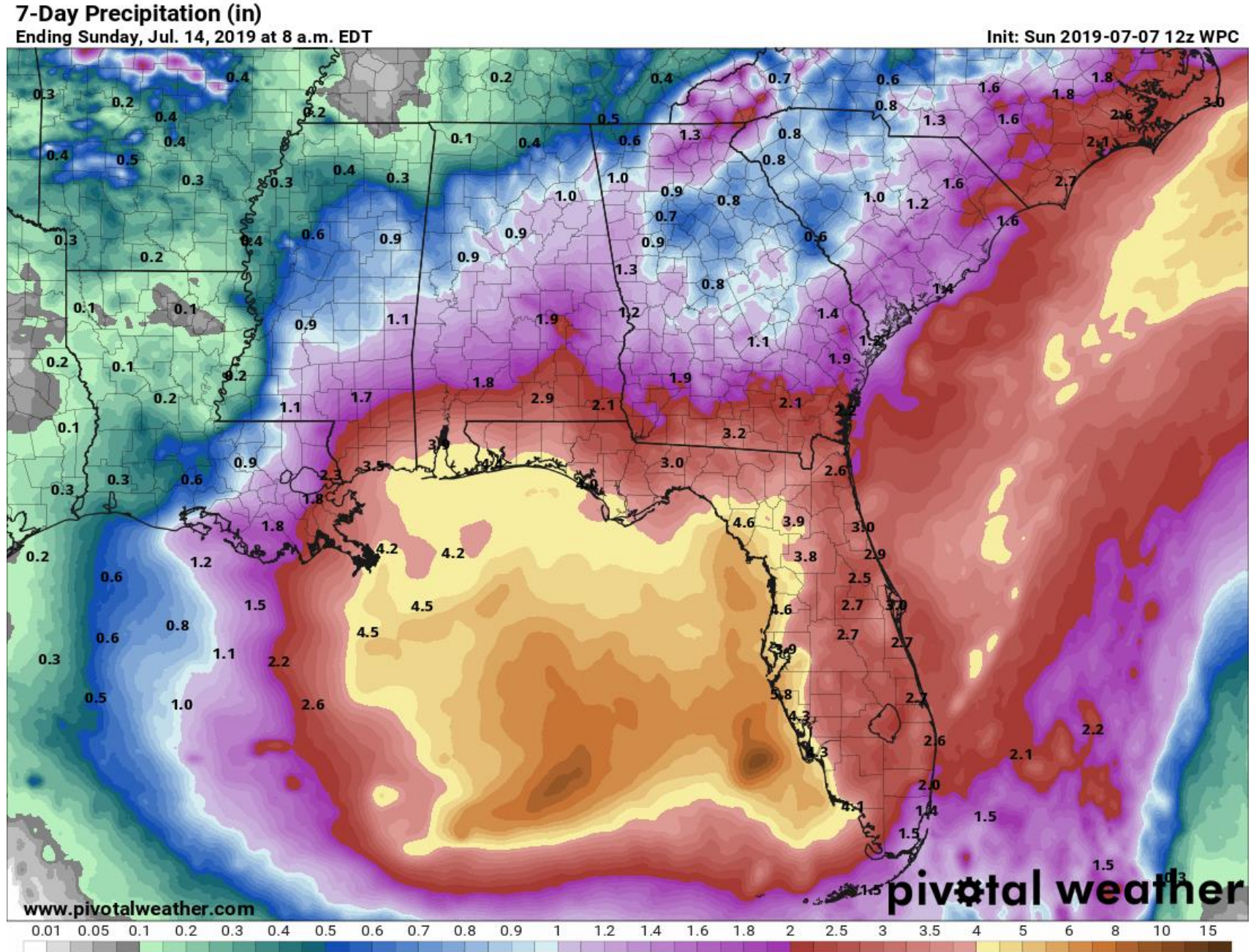
Cumulative Rainfall Total Next 7-Days

A widespread 2-5" is expected across the state this week.

***THIS DOES NOT INCLUDE
LOCALLY HIGHER TOTALS***

The greatest rainfall threat will vary from day to day and location to location depending on the exact development of the system.

All Florida rivers are well below flood stage. Drought conditions continue across inland North Florida.



Summary

- A non-tropical weather system currently located over Tennessee is moving south towards the Gulf of Mexico.
- By Wednesday, the system will stall over the warm waters of the northeastern Gulf of Mexico.
- The system may gradually become better organized and could become a tropical depression or storm later this week.
- This system has a near 0% (low) chance of formation during the next 48 hours but a 40% (medium) chance of formation during the next 5 days.
- There are a lot of uncertainties with this system and the exact track and intensity, should something develop, is unknown.
- More details will become available on Monday and Tuesday. Due to the nature of this system, the lead time may be less than usual from the time the system develops to when it directly impacts land.
- The next name on the list is Barry.
- There are no other areas of possible development in the Atlantic Basin for at least the next five days.

Florida Outlook:

- Regardless of development, scattered to numerous showers and thunderstorms are expected each day this week statewide.
- Widespread rainfall totals of 2-5" are forecast with locally higher amounts over the next 7 days.
- It is too early to determine any other impacts.

The next briefing packet will be issued Monday morning. For the latest information on the tropics, please visit the National Hurricane Center website at www.hurricanes.gov.



TROPICAL UPDATE



Created by:

Michael Spagnolo, Deputy State Meteorologist

Michael.Spagnolo@em.myflorida.com

State Meteorological Support Unit

Florida Division of Emergency Management

Users wishing to subscribe (approval pending) to this distribution list, register at https://public.govdelivery.com/accounts/FLDEM/subscriber/new?topic_id=SERT_Met_Tropics.

Other reports available for subscription are available at <https://public.govdelivery.com/accounts/FLDEM/subscriber/new?preferences=true>