



TROPICAL UPDATE

10 AM EDT

Saturday, June 1, 2019

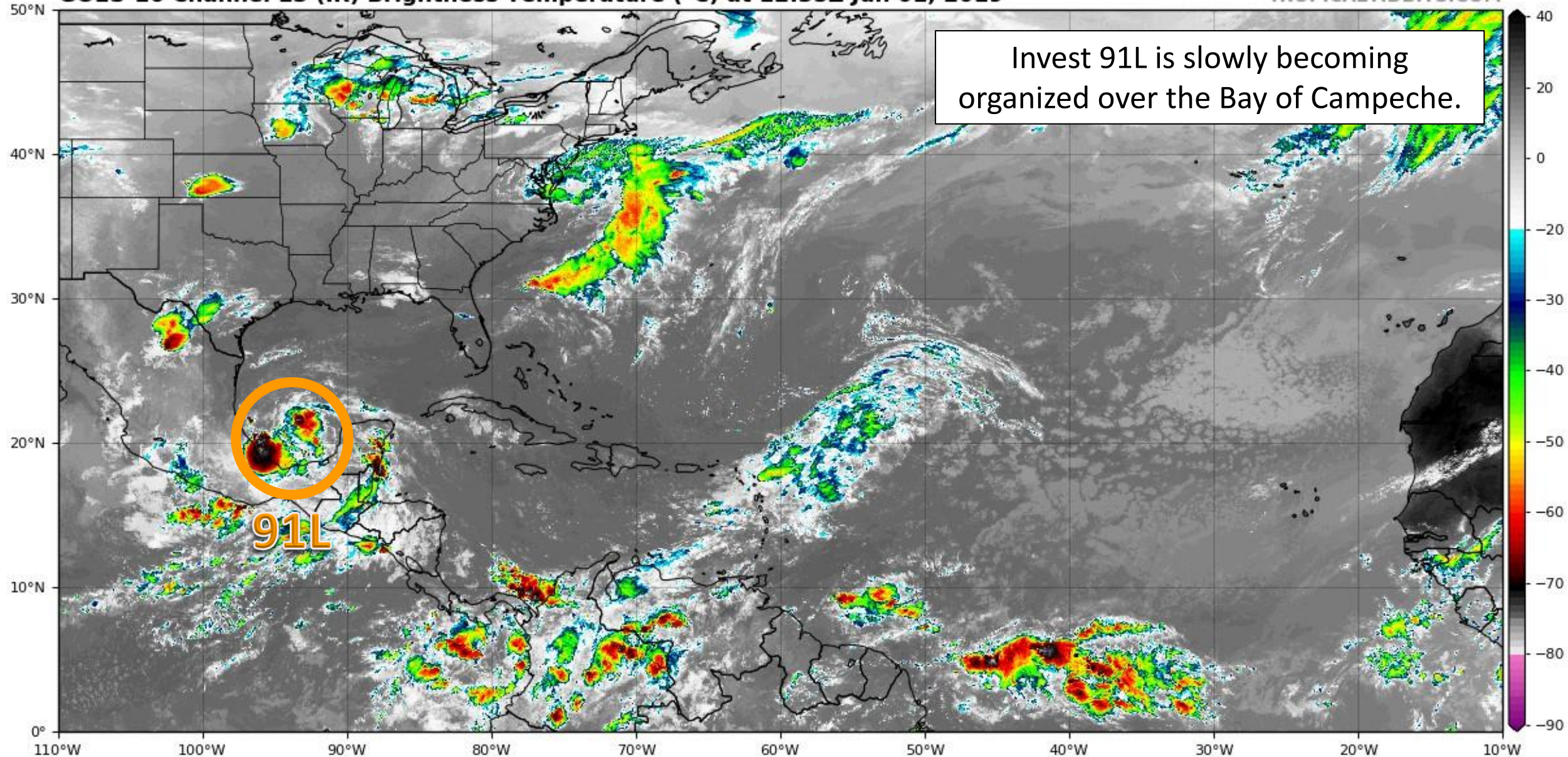
Invest 91L (50%)

This update is intended for government and emergency response officials, and is provided for informational and situational awareness purposes only. Forecast conditions are subject to change based on a variety of environmental factors. For additional information, or for any life safety concerns with an active weather event please contact your County Emergency Management or Public Safety Office, local National Weather Service forecast office or visit the National Hurricane Center website at www.nhc.noaa.gov.

Atlantic Basin Satellite Image

GOES-16 Channel 13 (IR) Brightness Temperature (°C) at 12:35Z Jun 01, 2019

TROPICALTIDBITS.COM





Five-Day Graphical Tropical Weather Outlook

National Hurricane Center Miami, Florida



www.hurricanes.gov

Disturbance 1

A broad area of low pressure located over the southern Bay of Campeche is producing disorganized showers and thunderstorms. The low is forecast to move westward to west-northwestward across the southern Bay of Campeche toward the east coast of Mexico during the next few days. If the system remains over water, a tropical depression could form before it moves inland early next week.

***Formation chance through 48 hours...medium...40 percent.**

***Formation chance through 5 days...medium...50 percent.**

THIS SYSTEM DOES NOT POSE A THREAT TO FLORIDA.

8:00 am EDT
Sat Jun 1 2019

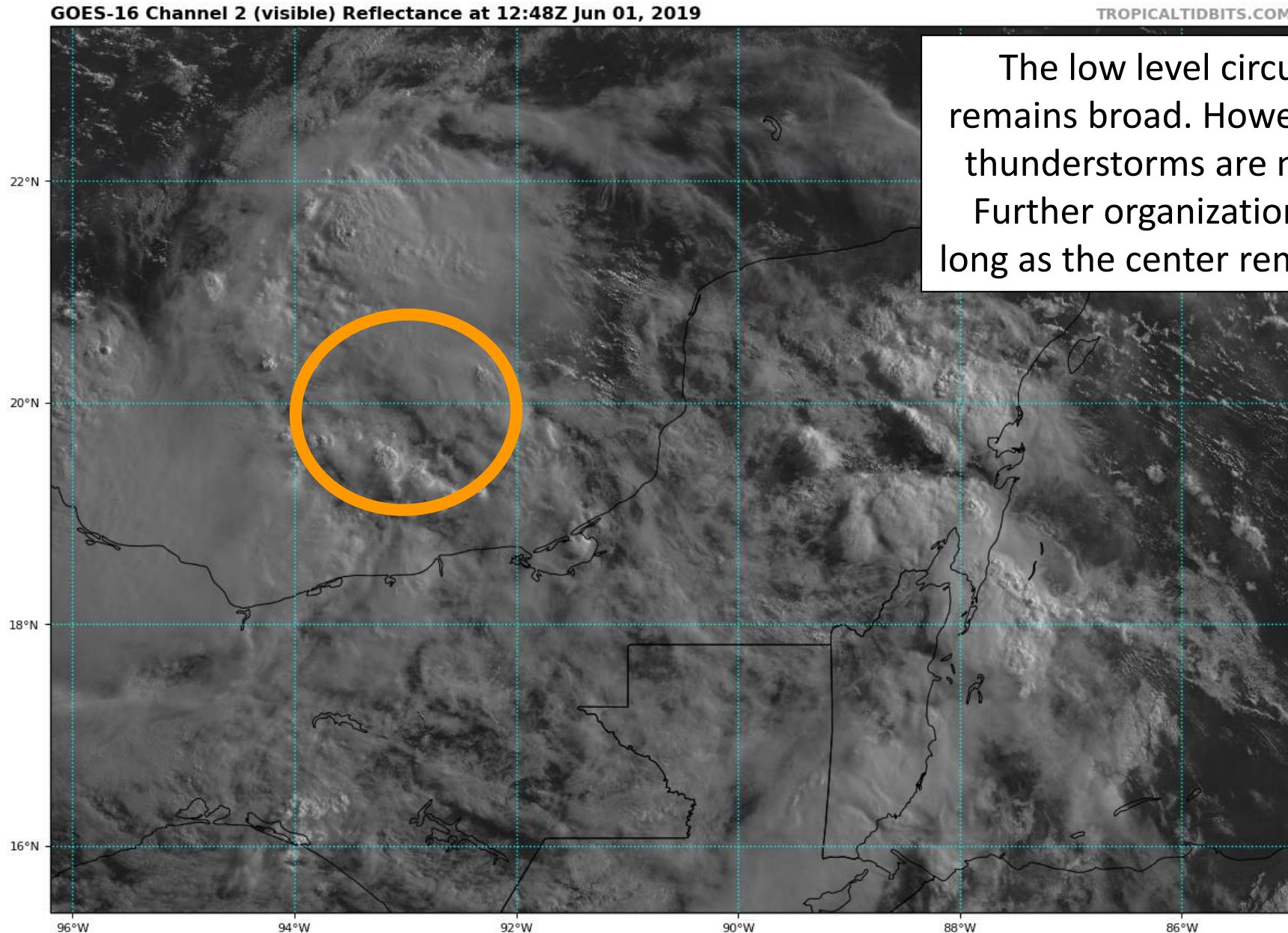
100W 90W 80W 70W 60W 50W 40W 30W 20W

Current Disturbances and Five-Day Cyclone Formation Chance: < 40% 40-60% > 60%

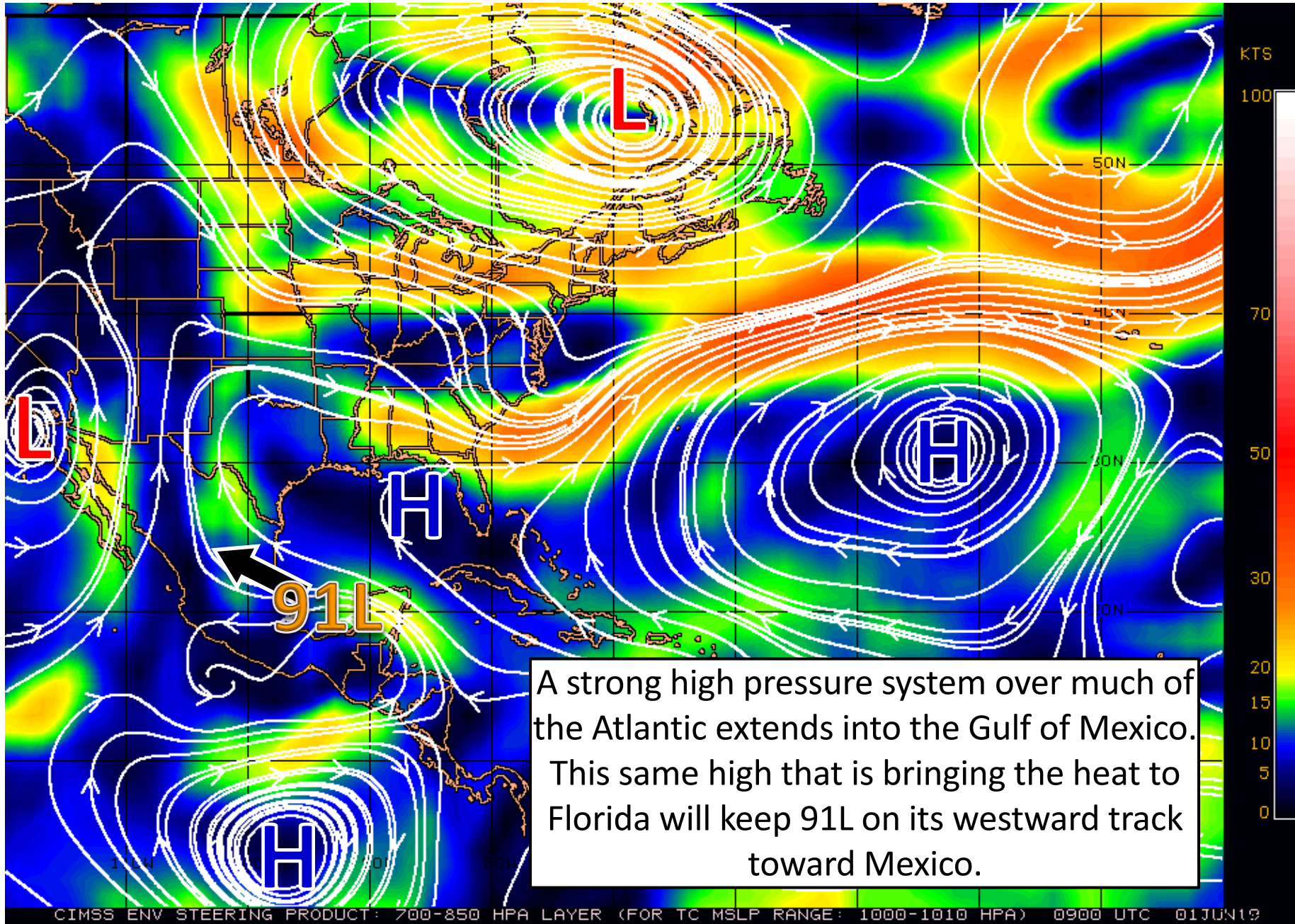
Tropical or Sub-Tropical Cyclone: Depression Storm Hurricane

Post-Tropical Cyclone or Remnants

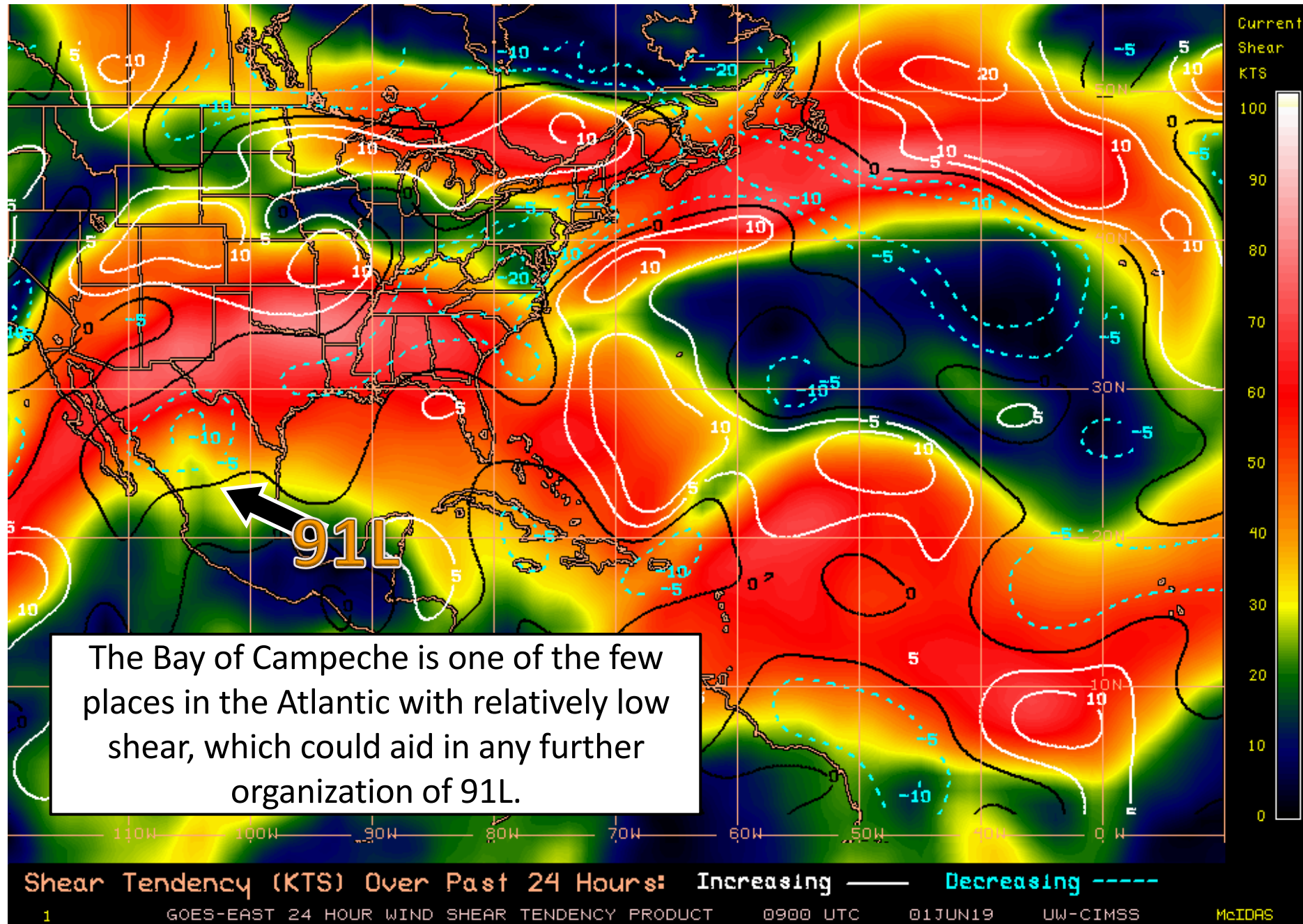
91L Satellite Image



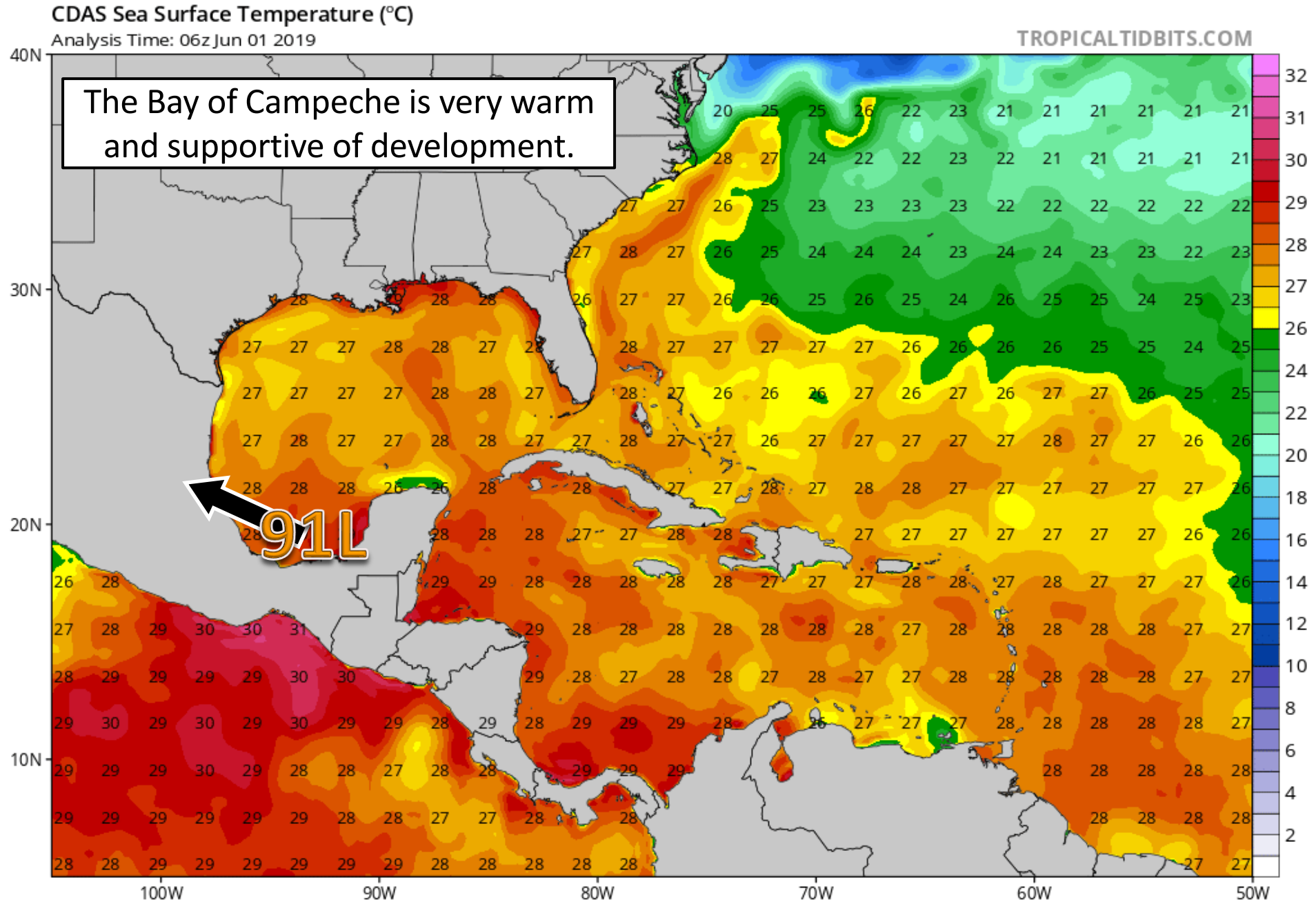
Steering Currents



Wind Shear (shaded) and Wind Shear Tendencies (contoured)



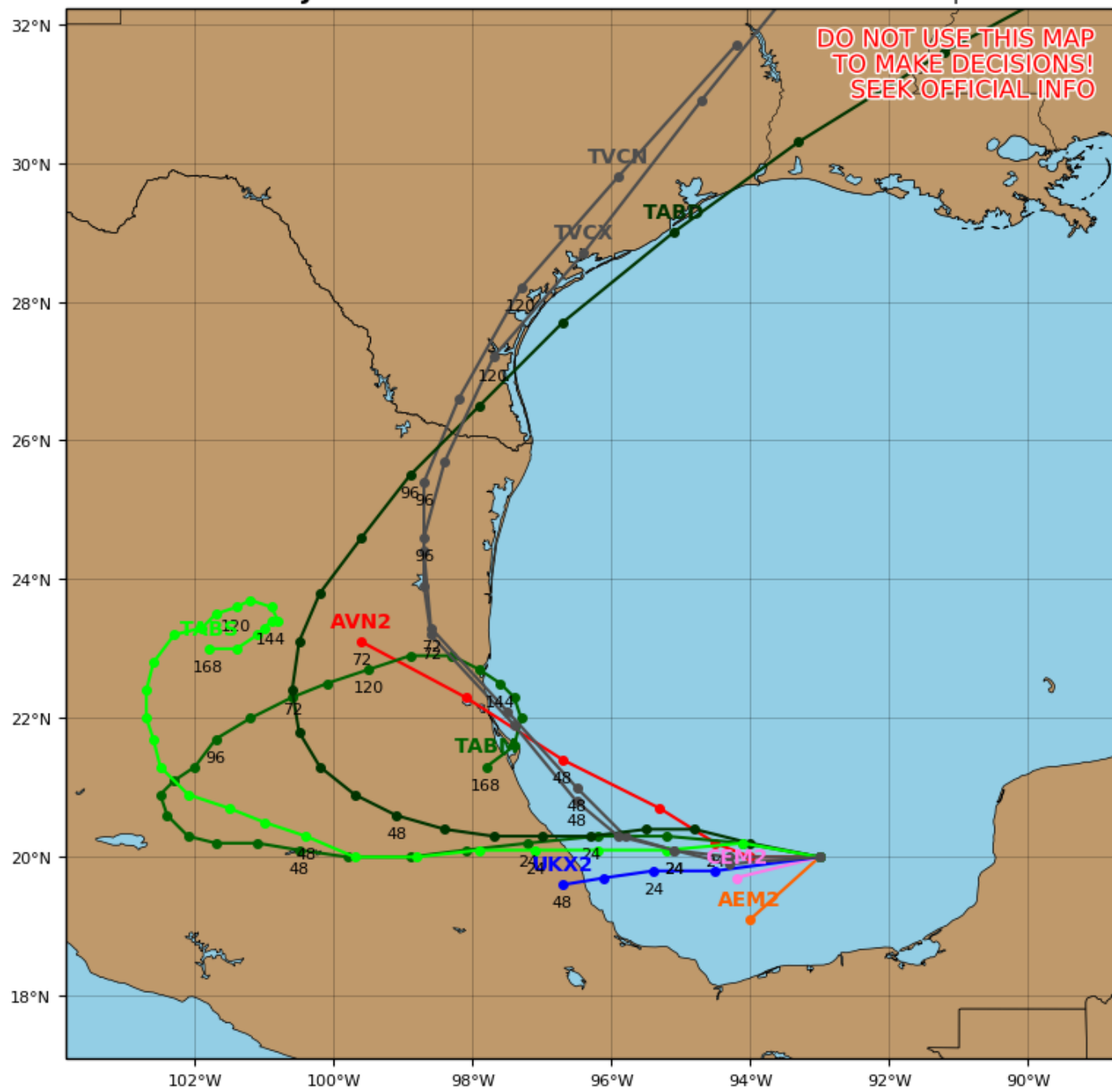
Current Sea Surface Temperatures



Invest 91L Model Track Guidance

Initialized at 12z Jun 01 2019

Levi Cowan - tropicaltidbits.com



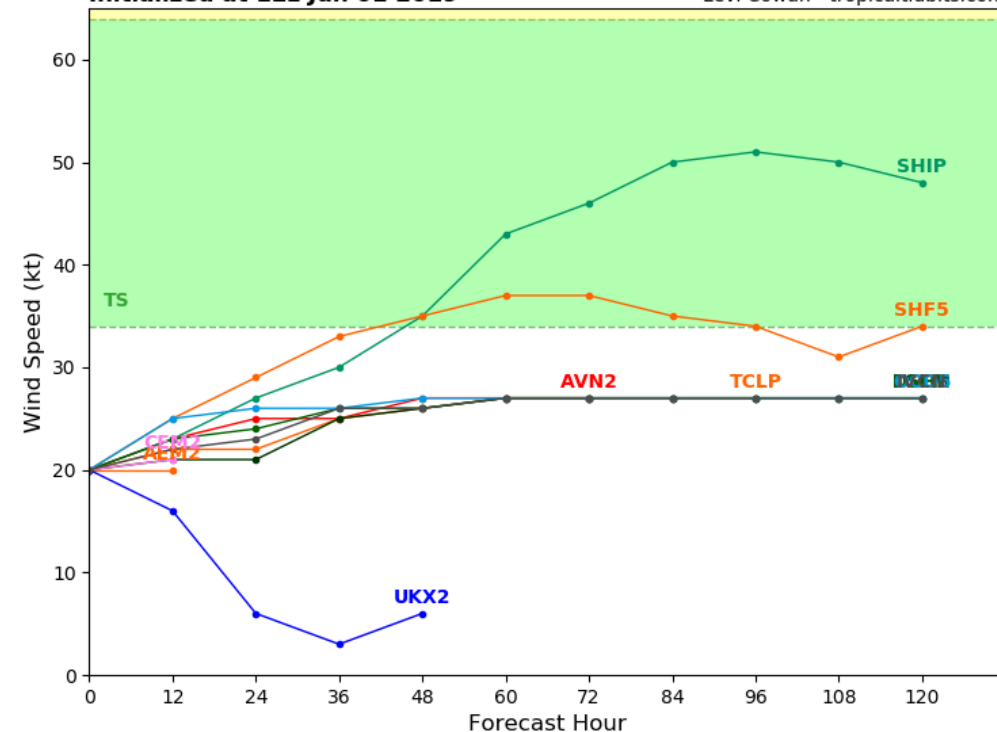
Current Forecast Model Guidance

The current model guidance are in fair agreement of bringing Invest 91L toward the east coast of Mexico in about 2 days. If this guidance verifies, it will have a small window of potential development before moving onshore. Most of these models keep it below tropical storm strength at this time.

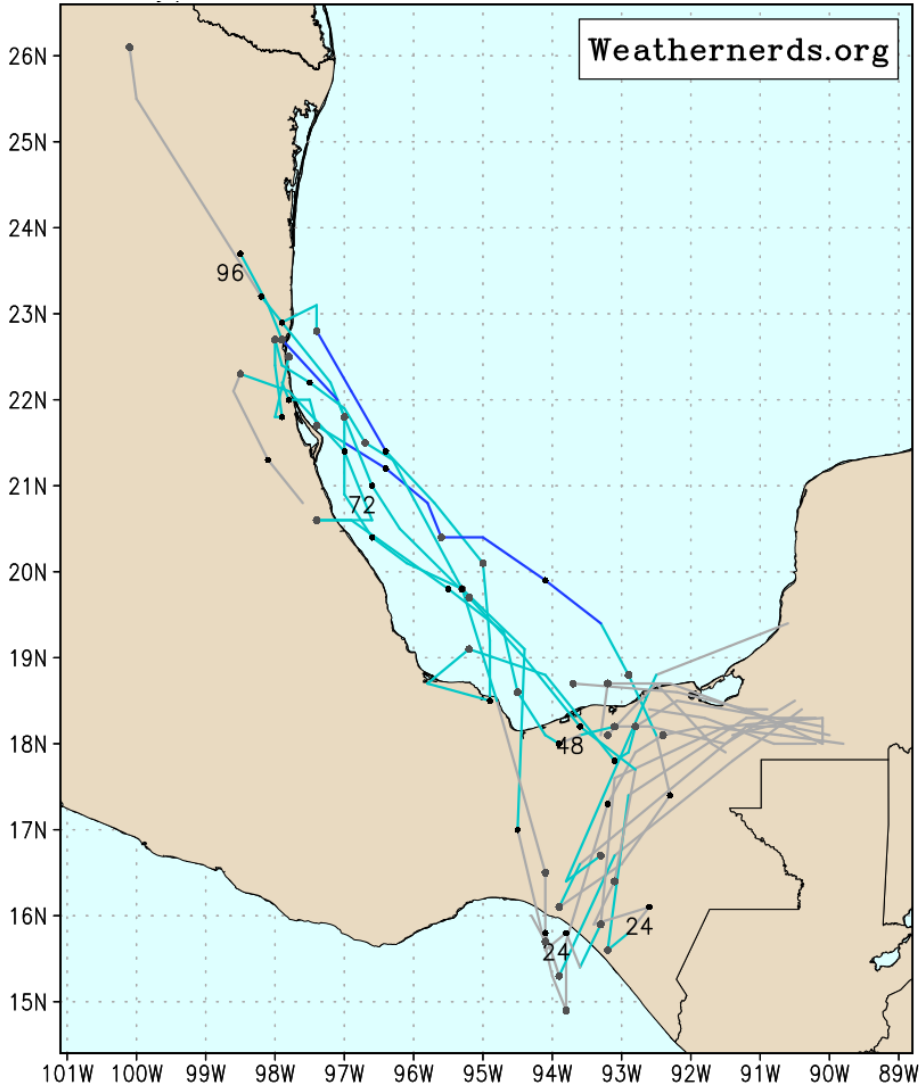
Invest 91L Model Intensity Guidance

Initialized at 12z Jun 01 2019

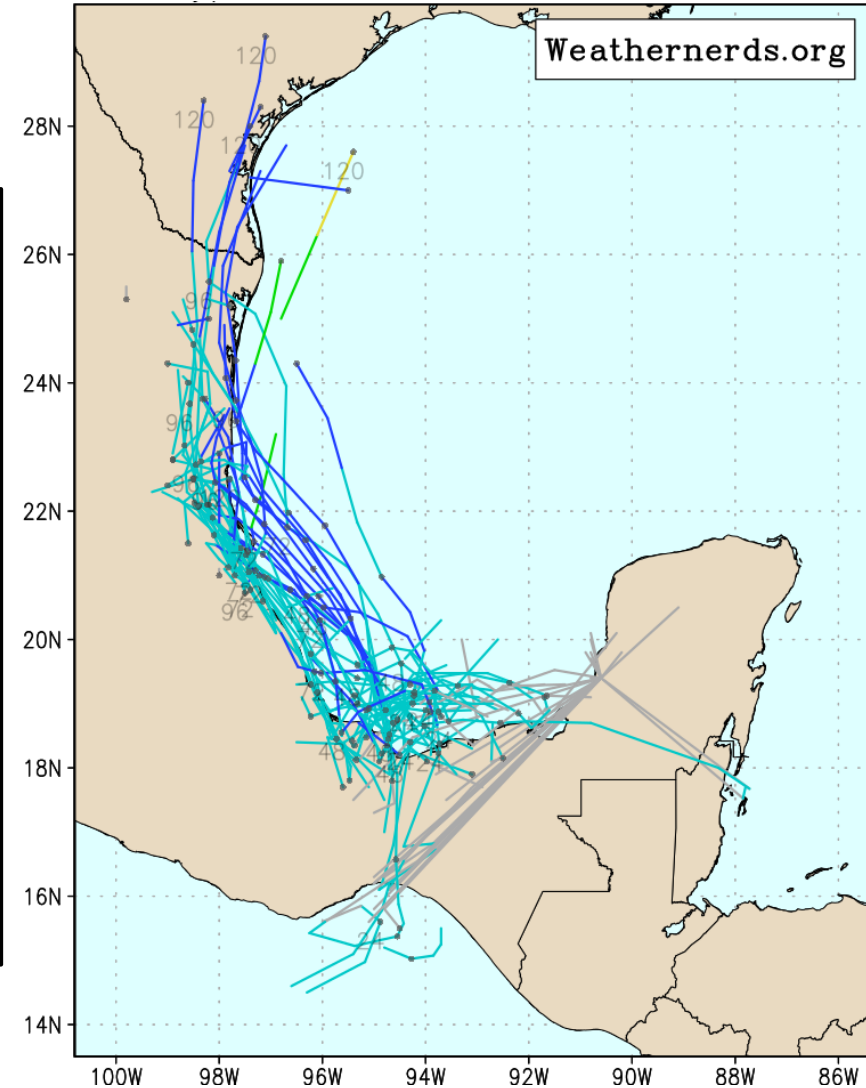
Levi Cowan - tropicaltidbits.com



Current Forecast Ensemble Model Guidance



Some recent model trends have been to bring 91L further up the coast of Mexico with a slightly delayed timing. However, both model suites agree that landfall along the Mexican coast is highly likely. The timeline though would be sometime Monday or Tuesday. Also, most of these ensemble members keep this system at a tropical depression or minimal tropical storm intensity.





2019 Atlantic Tropical Cyclone Names*

~~Andrea~~
Barry
Chantal
Dorian
Erin
Fernand
Gabrielle

Humberto
Imelda
Jerry
Karen
Lorenzo
Melissa
Nestor

Olga
Pablo
Rebekah
Sebastien
Tanya
Van
Wendy

*Names provided by the World Meteorological Organization

Summary

- Invest 91L is located over the southern Bay of Campeche and is producing disorganized showers and thunderstorms.
- 91L is expected to move westward or west-northwestward over the next couple days toward the east coast of Mexico.
- This system has a 40% (medium) chance of formation during the next 48 hours and a 50% (medium) chance of formation during the next 5 days.
- Shear is relatively weak and water temperatures are very warm over the Bay of Campeche.
- This system could become a tropical depression over the next couple days. Though, some models bring this system up to minimal tropical storm strength.
- If this system reaches tropical storm intensity, the next name on the list is Barry.
- It would not be out of the question for the National Hurricane Center to initiate advisories on a Potential Tropical Cyclone sometime this weekend, especially if organization increases.
- Strong high pressure that has brought the heat to Florida will keep this system away from the state. **Thus, no impacts to Florida are expected.**
- There are no other areas of possible development in the Atlantic Basin for at least the next five days.
- Today is also the first day of the 2019 Atlantic Hurricane Season, which runs from June 1 to November 30. However, tropical cyclones can still form outside of these dates.

The next briefing packet will be issued later this afternoon. For the latest information on the tropics, please visit the National Hurricane Center website at www.hurricanes.gov.



TROPICAL UPDATE

Created by:

Cameron Young, Assistant State Meteorologist

Cameron.Young@em.myflorida.com

State Meteorological Support Unit

Florida Division of Emergency Management

Users wishing to subscribe (approval pending) to this distribution list, register at https://public.govdelivery.com/accounts/FLDEM/subscriber/new?topic_id=SERT_Met_Tropics.

Other reports available for subscription are available at <https://public.govdelivery.com/accounts/FLDEM/subscriber/new?preferences=true>