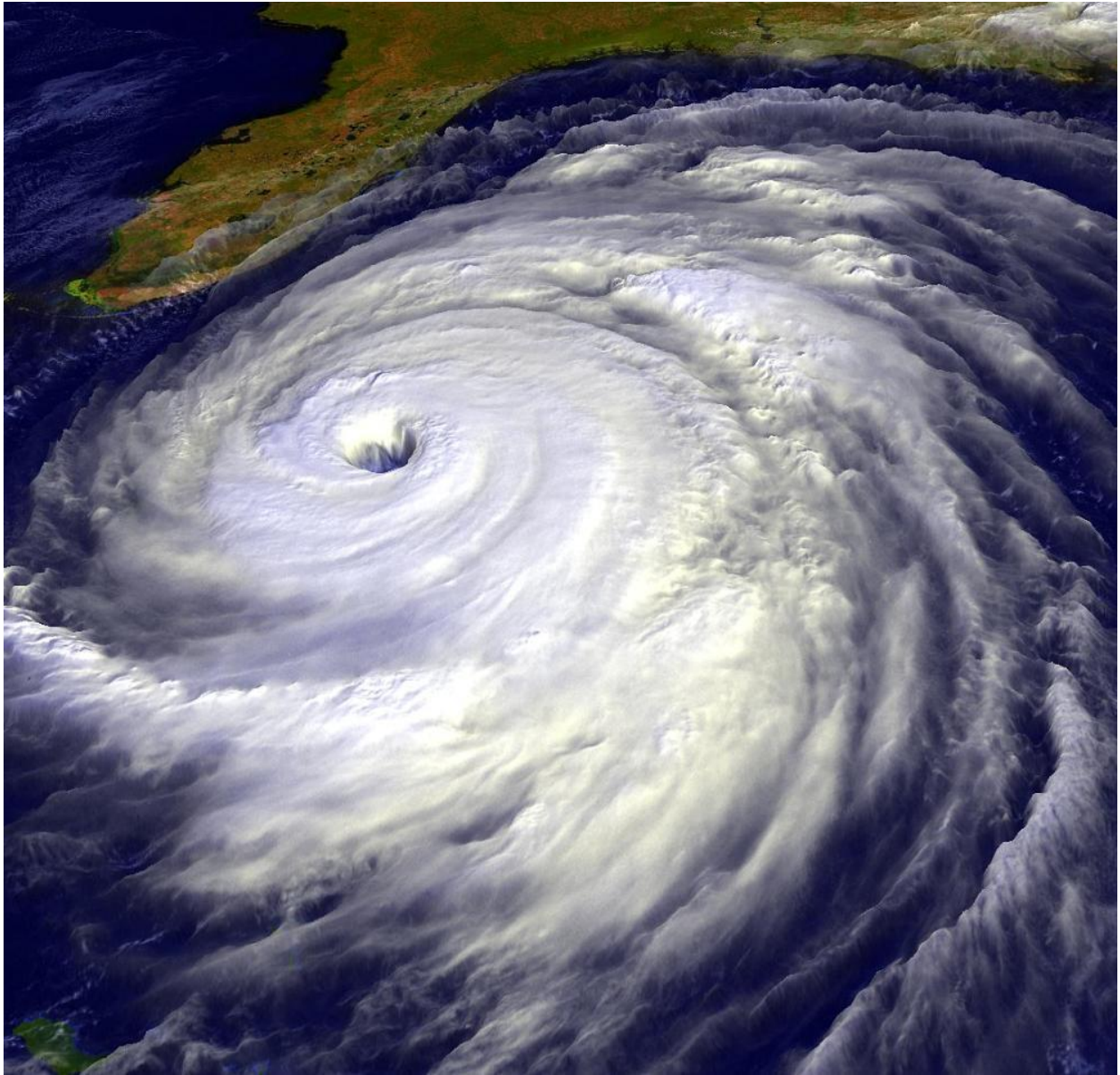


FECA's 2019 Storm Manual



INDEX

<u>TOPIC</u>	<u>PAGE</u>
 <u>FECA STORM PLAN - Tab 1</u>	
Index	1
Purpose	2
FECA Contact Information	3
Action Plan for Securing Help	4-7
Prior to a disaster	4-6
After the disaster strikes	6-7
After service is restored	7
Requesting Assistance Format	8
Providing Assistance Format	9
Suggestions for Requesting Mutual Aid Assistance	10-12
Suggestions for Sending Help to Other Co-ops	13-14
News Releases	see www.cooperative.com
List of Contractors Co-ops use	15
Mutual Aid Agreement	16
 <u>LIST OF CONTRACTORS - Tab 2</u>	
	17-23
 <u>MEMBER SYSTEM INFORMATION SHEETS - Tab 3</u>	
Central Florida Electric Cooperative	24-31
CHELCO	32-37
Clay Electric Cooperative.....	38-50
Escambia River Electric Cooperative.....	51-53
Florida Keys Electric Cooperative	54-58
Glades Electric Cooperative	59-62
Gulf Coast Electric Cooperative	63-66
Okefenoke Rural Electric Membership Cooperative.....	67-71
Peace River Electric Cooperative.....	72-76
PowerSouth	77-80
Seminole Electric Cooperative	81-84
Sumter Electric Cooperative	85-88
Suwannee Valley Electric Cooperative	89-92
Talquin Electric Cooperative.....	93-97
Tri-County Electric Cooperative.....	98-101
West Florida Electric Cooperative	102-109
Withlacoochee River Electric Cooperative	110-114

PURPOSE

1. The Florida Electric Cooperatives Association (FECA) is available to procure manpower and equipment for any member that needs assistance from another cooperative. This manual provides a standard operating procedure for members to request assistance through FECA. This manual supplements each member cooperative's individual plan and is not in any way intended to replace or supersede the member's plan.
2. Generally, FECA will only be called upon when assistance is needed by, or from, more than one Florida cooperative or from cooperatives in other states. Nothing in this plan prevents a Florida co-op from requesting assistance directly from a neighboring co-op to assist with an isolated storm. However, when more than one co-op requires assistance, it will be advantageous for FECA to coordinate the assistance from other co-ops and statewides, and all such assistance should be coordinated through FECA and the other statewides.
3. NRECA has many disaster recovery resources which can be found at the following web site:
www.cooperative.com/topics/disaster-recovery/Pages/default.aspx

FECA CONTACT INFORMATION

FECA Office 850.877.6166 (fax 850.656.5485)

General Manager

Mike Bjorklund

Office Telephone 850.877.6166, ext. 1
Cellular 850.305.5367
e-mail mike@feca.com

Alternate Contacts

Ray Trusik

Office Telephone 850.877.6166, ext. 5
Home Telephone 850.877.8995
Cellular 850.591.7374
e-mail rtrusik@feca.com

Michelle Hershel

Office Telephone 850.877.6166, ext. 3
Home Telephone 850.668.3473
Cellular 850.510.1693
e-mail mhershel@feca.com

Allison Carter

Office Telephone 850.877.6166, ext. 2
Cellular 850.567.0059
e-mail allison@feca.com

Other important numbers

FEMA (www.fema.gov) 800.621.FEMA (3362)

Florida Division of Emergency Management 850.413.9900

State Emergency Operations Center (electric, ESF-12)..... 850.921.0165

PSC ESF-12 contact - Rick Moses cell 850.413.6582
office 850.879.8665, rmoses@psc.state.fl.us

Outage information by county can be emailed to:
Outagenumbers@embarqmail.com

ACTION PLAN FOR SECURING HELP

PRIOR TO A DISASTER

1. Make sure that the information for your co-op is up to date in FECA's Emergency Work Plan Manual and in the Cooperative Mutual Aid web based program, which can be found at the following:
<https://fl.stormassistsite.com/login.php>
2. Update your procedures to accommodate FEMA's latest procurement and documentation requirements.

NRECA's updated FEMA Guide can be found on cooperative.com:

www.cooperative.com/programs-services/government-relations/regulatory-issues/Pages/Secure/FEMA-Guide.aspx

FEMA's Public Assistance Program and Policy Guide can be found here:

www.fema.gov/media-library/assets/documents/111781

3. FECA staff will monitor storms, but it is up to the member co-op to notify FECA that assistance may be needed in the near future.
4. As soon as it becomes apparent that a member may require assistance from other co-ops, notify FECA of the following by phone (**see Requesting Assistance Format for requesting via e-mail in a spreadsheet** and the Cooperative Mutual Aid web based program):
 - a. An estimate of the number and type of personnel and equipment that FECA should try to procure;
 - b. An estimate of the date and time you want them to arrive;
 - Note that FEMA may not reimburse for "staging crews", however, travel time after the disaster has been declared should be reimbursable.
 - Also, if you plan to stage crews you need to agree (preferably in writing) on the number of hours they will be paid per day to standby and how much of that will be overtime.
 - c. The location they should report to;
 - d. A rough estimate as to how long help may be needed.
5. Once FECA has been notified that assistance may be required, FECA will contact the other Florida co-ops and other statewide associations regarding their potential needs and their ability to assist.
6. If more than one member co-op requests assistance prior to the storm, FECA will initiate a conference call with the requesting member systems

to discuss pre-storm commitments and possible coalitions for crews, tent cities, and other needs.

7. FECA will initiate a conference call with the other statewide organizations to discuss mutual aid and will obtain information from the EOC regarding any relevant declarations that may assist with travel and the possible use of facilities such as weigh stations for fueling stations.
8. FECA will arrange for pre-disaster assistance from co-ops on the NRECA Mutual Aid List (available on cooperative.com – search for “Mutual Aid Agreements”) and will attempt to form coalitions with members to jointly procure crews and secure items from vendors such as portable housing, caterers, cranes, etc. The requesting co-op understands that help arranged prior to the storm will need to be obtained from co-ops that believe they are not in the storm’s projected path. Therefore, for long term events we recommend seeking crews from further away first, and calling on the neighboring states to help as soon as they are in the clear. This also will minimize the need to “stage” crews, but if you elect to stage crews it is important to establish hours that the crews will be paid while standing by. FECA will provide a copy of the co-op specific information for the requesting co-op that is in FECA’s emergency work plan manual to the assisting co-ops.
9. If the total number of personnel requested to be staged prior to the event cannot be obtained at that time, the available personnel will be rationed among those requesting assistance.
10. FECA will be available to assist the members in establishing safe areas to stage assisting personnel and equipment until the storm subsides, but the requesting co-op ultimately is responsible for all of the staging arrangements.
11. The requesting co-op must prepare to house, feed, and generally take care of the assisting personnel.
12. Assistance from vendors and any utilities that are not parties to the NRECA Mutual Aid agreement must be pursued by the member co-op, through a competitive bidding process as required by FEMA. FECA can assist if necessary, but anything that requires bidding should be done by the co-op if at all possible. Note that the bidding process must consider women-owned and minority-owned businesses. To make women and minority businesses aware of your contracting opportunities, contact your regional or federal Small Business Administration office to receive a list of these types of businesses in your area. Also check with the State to see if it has compiled a list of women and minority vendors, contractors

and subcontractors that co-ops can review before essential support services are needed.

AFTER THE DISASTER STRIKES

1. Perform an initial damage assessment. Use of an airplane, helicopter or drone to patrol the system is a quick way to assess widespread damage. (See Section 934.50, Florida Statutes, for guidelines on drone use)
2. Once the damage has been assessed, notify FECA of the following:
 - a. The number and type of personnel, equipment, and materials that FECA should procure for the member by phone and input the request in the Cooperative Mutual Aid web based program (**see Requesting Assistance Format for providing via e-mail in a spreadsheet**);
 - b. The location the personnel should report to;
 - c. Weather and road conditions;
 - d. A rough estimate as to how long help may be needed;
 - e. The maximum number of meters that were interrupted at the height of the storm, and the approximate number of meters presently out in each county, which can be emailed to Outagenumbers@embargmail.com. For those co-ops that have outage information that is displayed by county available on their public web page, further outage reporting is not required but estimated restoration times still must be reported to statewide, which will report them to the state EOC. Those co-ops that do not have an outage map that displays meters out by county will have to manually report outage information to statewide on the schedule determined by the EOC.
3. FECA will contact the other Florida co-ops and other statewide associations to obtain the requested assistance from co-ops and municipalities that are on the NRECA Mutual Aid List. FECA will provide the assisting co-ops a copy of the requesting co-op's specific information that is in FECA's emergency work plan manual. FECA also can assist with obtaining assistance from the IOU's in Florida including their contract crews, however, each co-op must individually assess whether to sign a mutual aid agreement with an IOU.
4. If the number of personnel requested by all of the co-ops that need assistance cannot be obtained, the personnel will be rationed among those requesting assistance.
5. The host co-op must be prepared to house, feed, and generally take care of the assisting personnel when they arrive.

6. Assistance from vendors and any utilities that are not parties to the NRECA Mutual Aid agreement must be pursued by the member co-op, through a competitive bidding process as required by FEMA. FECA can assist if necessary. Note that the bidding process must consider women-owned and minority-owned businesses. To make women and minority businesses aware of your contracting opportunities, contact your regional or federal Small Business Administration offices to receive a list of these types of businesses in your area. Also check with the State to see if it has compiled a list of women and minority vendors, contractors and subcontractors that co-ops can review before essential support services are needed.
7. The assisting crews may be called home at any time by their co-op's management. In addition, their management may elect to rotate the crew personnel as they deem necessary. FECA is available to assist with the rotation, and in any event should be notified that crews will be rotated.
8. FECA will be available 24/7 to work with the State EOC in the event that a member co-op needs assistance at the State EOC level.

AFTER SERVICE IS RESTORED

1. As soon as the emergency repairs have been made, FECA shall be notified as early as possible that the member system will be releasing the assisting crews and FECA will determine whether those crews can be sent to another co-op that needs help. In addition, FECA should be notified before contractors are released in the event that another co-op may need to hire the contractors. If another coop does need your contract crews, we ask that you release the crews to the requesting coop rather than just a general release if possible.
2. Any vendors that performed unsatisfactorily should be reported to FECA and shall be reconsidered for FECA's list of contractors. Also, please notify FECA of any vendors that can be added to the list of contractors.
3. Reimbursement – The underlying principle is that a cooperative shall incur neither a monetary gain nor loss on services rendered. In addition, the employees involved shall not be expected to bear expenses which they would not have during their normal work assignment. We recommend that any unusual items be discussed with the other co-op prior to the purchase.

REQUESTING ASSISTANCE FORMAT

Co-op Requesting Assistance: _____

Co-op Contact Information

Name: _____

Direct phone(s): _____

Email: _____ Fax: _____

Highest Gloving Voltage _____

The Number of Each Type of Crew: (see definitions on pages 10-11)

Construction _____

Service Bucket _____

Underground _____

Right-of-way _____

OTHER EQUIPMENT AND TOOLS: _____

THE NUMBER OF OTHER PERSONNEL NEEDED:

Mechanic	_____	Staking Engineer	_____
Substation	_____	Meterperson	_____
Supervisor	_____	Warehouse Manager	_____
Dispatcher	_____	Warehouse Helper	_____
Public Relations	_____	Equipment operator	_____
Clerical	_____	Other	_____

Critical materials needed _____

Estimate of how long help may be needed _____

Work and weather conditions _____

Road conditions _____

Where to Report _____

Whether cots and bedding are required _____

PROVIDING ASSISTANCE FORMAT

Co-op Providing Assistance: _____

Contact at Co-op:

Name: _____

Direct phone(s): _____

Email: _____ Fax: _____

Co-op Address: _____

Workers Comp Carrier: _____

Will use radio channel _____ **Frequency** _____

Crew 1

Type of Crew: _____

Estimated departure time/date: _____

Ranking Person on crew: _____

Highest Gloving Voltage _____

Employee Name	Job Class	Cell Phone	Vehicle Types	Vehicle Numbers	Emergency Contact	Emergency Phone #

SUGGESTIONS FOR REQUESTING MUTUAL AID ASSISTANCE

When disaster strikes your system, FECA and other co-ops will help as you see fit. The following are some observations made from past experiences with mutual aid.

WHEN REQUESTING ASSISTANCE

1. Whenever possible, the co-op should arrange for contract crews and other vendors prior to a storm through a competitive bidding process as required by FEMA, including notice to women and minority owned businesses. FECA stands ready to request crews and other personnel from co-ops and municipalities that are on the NRECA Mutual Aid List.
2. When requesting mutual aid, the following is a general composition of crews:
 - a. Construction – Usually a working foreman and three to six other people, at least two of which are journeyman linemen, one or two 55-60 foot bucket trucks, a digger derrick, one pickup truck, and a pole trailer. Larger construction crews might have 2 construction buckets and 2 digger derricks. Crew should come complete with digging tools, line tools, sleeves, splices, chain saws, trouble lights and other associated tools and equipment. Four wheel drive vehicles should be specified if needed.
 - b. Service Bucket - A service crew is usually 2 -3 men, at least one of which is a journeyman lineman, with a bucket truck with a reach of approximately 30-40 feet that probably does not have any material handling capability. Usually includes a pick-up truck. Service vehicle should be equipped with line tools, ladder, sleeves, splices, chain saws, trouble lights and other associated tools and equipment.
 - c. Underground - A foreman and two to four other people, at least one of which is a journeyman. This crew is expected to be equipped with a trencher and backhoe or a trencher/backhoe combination also equipped with digging tools, line tools, sleeves, splices, chain saws, ladders, trouble lights, locating equipment, spiking tools and other associated tools and equipment.
 - d. Right of Way - A foreman and two to four other people with buckets, chippers, dump truck and various clearing equipment.
 - e. Mechanic - Mechanic and equipped service truck.
 - f. Clerical Support - cashiers, receptionists, and secretaries to relieve regular office personnel.

- g. Other - phone representatives (specify if knowledge of a specific foreign language would be helpful), accounting, government/media liaison.
 - h. Warehouseman Manager - A person competent in the workings of a warehouse and the materials in it. A commercial driver's license is beneficial.
 - i. Warehouseman Helper - A person familiar with the materials in a warehouse. A commercial driver's license is beneficial.
- 3. The host co-op must make arrangements for lodging and feeding outside help.
 - 4. Truck and equipment service may be a problem since service stations and garages may be damaged or without power. The host co-op should make arrangements to provide fuel, mechanical services, and tire repair on a 24-hour basis. Please note that most mutual aid will charge FEMA rates for all vehicles and FEMA rates generally include fuel. Should your coop provide fuel for mutual aid vehicles you will need to have some type of system to track how much was provided to each assisting coop/contractor so that you can bill the fuel charges back to them.
 - 5. Maintain a list of names of who is working with whom and where - and their radio call letters/frequency and cell phone numbers.
 - 6. It is recommended that each co-op maintain a private, unlisted phone number and that FECA be informed of this number and maintain the secrecy of the number so that coordinating personnel can reach the co-op during the emergency.

WHEN THE HELP ARRIVES

1. The host co-op shall:
 - a. Notify the assisting crew about:
 - i. Complying with safety procedures
 - ii. Any special or unusual circumstances on your system
 - iii. Food and lodging and how to handle expenses
 - iv. Where to get fuel, get equipment serviced, and how to handle any invoices
 - v. The length of time they will be expected to work and the length of rest periods
 - vi. Persons that are in charge of operations and dispatching
 - vii. Discuss FEMA related documentation
 - b. Verify that the visiting crew's safety equipment is adequate for the conditions and voltages (i.e., verify ratings for gloves, grounds and PPE);
 - c. Secure agreement from arriving crews that safety practices are understood and will be complied with; and
 - d. Provide system and road maps and, if possible, GPS coordinates of staging areas and work locations.
2. The host co-op should consider conducting morning meetings to brief the crews on restoration efforts and to discuss safety and operational issues, and FEMA related documentation.
3. Maintain well-established dispatching procedures, including lock-out/tag-out, for clearing devices in the field.

SUGGESTIONS FOR SENDING HELP TO OTHER CO-OPS

1. When sending assistance to another co-op make sure your personnel has:
 - a. Contact names and numbers of the requesting co-op;
 - b. Contact names and numbers for their home co-op and a means to call, possibly including cell phones and satellite phones;
 - c. Directions, including information on road conditions and closures;
 - d. Sufficient cash and possibly a company credit card. In the event your crews run short of cash, arrangements should be made with the host co-op manager or his representative for additional funds;
 - e. An estimate of the amount of time they are expected to stay at the requesting co-op;
 - f. Enough food and water for the first few days;
 - g. Sun screen;
 - h. Bug spray;
 - i. Bedding;
 - j. Equipment for night work;
 - i. Extra lights
 - ii. Flash lights with extra batteries
 - iii. Reflective vests
 - iv. Reflective cones
 - k. Foul weather gear;
 - l. Chain saws and chain saw chaps;
 - m. Shots for personnel, such as tetanus;
 - n. Extra gloves - both leather and rubber;
 - o. Extra safety glasses; and
 - p. Extra grounds.
2. When sending several crews, it is suggested that you send a supervisor to coordinate the activities of your crews, handle petty cash, and perform other managerial duties.
3. When sending several crews you should also consider sending a mechanic with an equipped mechanic's truck.
4. Input the crew information into the Cooperative Mutual Aid web based program. If this is not possible for some reason, or if we are sending help to a state that does not use the program, **provide the relevant crew intake information to FECA in an Excel spreadsheet in the Providing Assistance Format.** FECA will forward all information provided by the assisting co-op to the statewide association that is requesting help through the Cooperative Mutual Aid web based program or in a spreadsheet.
5. Assisting crews may be called home at any time by their co-op's management. In addition, the assisting co-op may elect to rotate their crew personnel as they deem necessary. These crew rotations should be coordinated with FECA,

and FECA will coordinate with the statewide association of the co-op you are assisting.

6. Explain your co-op's policy regarding off-site work rates/overtime. This should be compliant with a co-op's written policy to avoid problems with FEMA reimbursement.
7. If you charge for vehicles pursuant to FEMA's rates, verify the rates by checking FEMA's web page at: www.fema.gov/schedule-equipment-rates

*****Be advised that the following list of contractors is for general information purposes only and any decision to use a contractor from the list is solely at your discretion. FECA does not endorse the use of any contractor on the list and the inclusion of a contractor on the list is not an indicator of compliance with federal procurement standards.**

List of Contractors Used by Co-ops

OH Line Crews

Irby	PRECO
Kohler Construction	Seminole
L.E. Myers	Seminole
Michels	FL Keys
Musgrove	CHELCO, Central, Clay, Suwannee
Pike	Clay, Glades, Okefenoke, SECO, Talquin, West FL
Team Fishel	SECO
Volt Power	CHELCO

UG Line Crews

Ivy H. Smith Co.	SECO
MasTec	Clay
Pike	PRECO
Sumter Utilities	Talquin

Vegetation Management

All Reliable Services	Clay
Asplundh	Clay, Keys, Okefenoke, Talquin, West FL
Baird Tree Service	Clay
Bryant Tree Service	Suwannee
Burford Tree Service	Central
Davey Tree Expert Co.	Central, Glades, Seminole
GA ROW	Okefenoke, PRECO
Nelson Tree Service	Talquin, SECO
Southeastern Chemtreat Inc.	Escambia
Southland Utility Services, Inc.	CHELCO

MUTUAL AID AGREEMENT

In consideration of the mutual commitments given herein, each of the Signatories to this Mutual Aid Agreement agrees to render aid to any of the other Signatories as follows:

1. Request for aid. The Requesting Signatory agrees to make its request in writing to the Aiding Signatory within a reasonable time after aid is needed and with reasonable specificity. The Requesting Signatory agrees to compensate the Aiding Signatory as specified in this Agreement and in other agreements that may be in effect between the Requesting and Aiding Signatories.
2. Discretionary rendering of aid. Rendering of aid is entirely at the discretion of the Aiding Signatory. The agreement to render aid is expressly not contingent upon a declaration of a major disaster or emergency by the federal government or upon receiving federal funds.
3. Invoice to the Requesting Signatory. Within 90 days of the return to the home work station of all labor and equipment of the Aiding Signatory, the Aiding Signatory shall submit to the Requesting Signatory an invoice of all charges related to the aid provided pursuant to this Agreement. The invoice shall contain only charges related to the aid provided pursuant to this Agreement.
4. Charges to the Requesting Signatory. Charges to the Requesting Signatory from the Aiding Signatory shall be as follows:
 - a.) Labor force. Charges for labor force shall be in accordance with the Aiding Signatory's standard practices.
 - b.) Equipment. Charges for equipment, such as bucket trucks, digger derricks, and other special equipment used by the Aiding Signatory, shall be at the reasonable and customary rates for such equipment in the Aiding Signatory's location.
 - c.) Transportation. The Aiding Signatory shall transport needed personnel and equipment by reasonable and customary means and shall charge reasonable and customary rates for such transportation.
 - d.) Meals, lodging and other related expenses. Charges for meals, lodging and other expenses related to the provision of aid pursuant to this Agreement shall be the reasonable and actual costs incurred by the Aiding Signatory.
5. Counterparts. The Signatories may execute this Mutual Aid Agreement in one or more counterparts, with each counterpart being deemed an original Agreement, but with all counterparts being considered one Agreement.
6. Execution. Each party hereto has read, agreed to and executed this Mutual Aid Agreement on the date indicated.

Date _____

Entity _____

By _____

Title _____

VENDOR LIST FOR EMERGENCY WORKPLAN

See the Professional Resources section of the supply chain community on cooperative.com for boilerplate contracts and rates negotiated by NRECA.

*****Be advised that the following list of contractors is for general information purposes only and any decision to use a contractor from the list is solely at your discretion. FECA does not endorse the use of any contractor on the list and the inclusion of a contractor on the list is not an indicator of compliance with federal procurement standards.**

DISTRIBUTION AND TRANSMISSION CONTRACTORS in Florida

Company	Website	Phone	Alt. Phone
Florida Industrial Electric, FL (substations)	www.fie-inc.com	407.331.1551	
KAM Services, Groveland/Clermont, FL	www.kam-services.com	352.429.0049	MINORITY
The L. E. Myers Co., FL and others states	www.myrgroup.com	847.290.1891	352.735.8432
Musgrove Construction Co Bruce Musgrove, Live Oak, FL - T&D, R/W, Underground & Substation		386.362.7048	
MASTEC - MINORITY	www.mastec.com	850.562.2135	305.599.1800 Tallahassee, FL
Pike Construction	www.pike.com	800.424.7453	
Southeast Power Corporation Titusville, FL	www.southeastpower.com	321.268.0540	
SPE Utility Contractors Tampa, FL	www.spepower.com	888.773.8845	MINORITY
T & D Solutions, FL/LA	www.tdsolutions.com	727.303.3835	
	LA office:	318-442-8138	
Team Fishel, FL and nationwide (Formerly UG Utilities Contractors, Inc.)	www.teamfishel.com	800.347.4351 813.764.0256	352.429.4007

DISTRIBUTION AND TRANSMISSION CONTRACTORS outside Florida

Arkansas Electric Cooperatives, Inc.	www.ecark.org	800.482.1277 Ext. 2371	501.570.2200
* Note that AEC is affiliated with the Arkansas G&T but is not on the mutual aid list and therefore must be contracted by individual co-op's and not procured through FECA			
B&B Electrical, MS	www.bbecon.com	601.829.4100	
Bird Electric, TX	www.birdelectricinc.com	888.414.2473 Brian Bird	254.631.1662
Bowlin Group, KY	www.bowlingroup.com	859.485.6922	
C.C. Power LLC, MI	www.ccpowerllc.com	800.234.5167	231.258.5909

Ca-Par Electric INC, LA	www.ca-par.com	985.863.2655	MINORITY
Chain Electric Company, MS	www.chainelectric.com	601.545.3800	601.545.1421
Commonwealth Electric Co., Lincoln, NE	www.commonwealthelectric.com	402.474.1341	
Croft Electrical Contractors, Troy, MO	Mike Bradsher	314.323.1091	636.528.7892
	Dennis McVey	314.283.9503	636.462.7542
C. W. Wright Construction Co., VA	www.cwwright.com	804.768.1054	
Davis Construction & Utilities Manning, SC	Willy Davis	803.410.1342 Cell	803.473.4354 Office
Davis H. Elliott Construction, KY	www.dhec.com	859.263.5148	
D & H Electrical Contractors, Inc., AR		501.368.0320	
Deviney Utility Services, MS	www.deviney.com	601.372.3121	
East Bay Electric Co, AL		251.421.0033	
Echo Powerline, LA	www.echopowerline.com	318.346.9466 Office	318.359.0620 Cell
E-K Construction Co., LA		337.462.6131	
E.P. Breaux Electrical, Inc., LA	www.epbreaux.com	337.364.8183	337.232.7085
The Energy Group, Inc., MI	www.energygroupusa.com	313.491.8411	
Gaylor, IN	www.gaylor.com	800.878.0577	317.241.6300
Great Southwestern Const. Ins., CO		800.438.0790	303.688.5816
Grid Utility, GA	www.gridutility.com	678.865.8095	
Haverfield Corp., PA/GA	www.haverfield.com	717.334.1826	
Harper Electric Construction Co Andalusia, AL		334.222.7022	(t & d)
High Voltage Specialists, Inc., GA	www.highvoltagespecialists.com	706.854.8660	
Irby Construction Company	www.irby.com	850.476.5580 Panhandle	407.548.0510 Orlando
J. L. Malone, GA	www.jlmalonellc.com	229.439.2351	
Ivy H. Smith Company, LLC, GA	www.ivysmith.com	404.508.5703	
IES Industrial, Inc., NE		308.995.4462	
Kelly Electric Co., MO	www.kelleyelectric.com	573.888.5395	
Killen Contractors, MS		601.624.8865	Charlie cell
Kiowa Line Builders, MO	www.kiowalb.com	660.433.2677	
Lee Electrical Construction, Inc., NC	www.lee-electrical.com	800.762.5168	910.944.9728
MDR Powerline Const., Inc., MS	www.mdrpowerline.com	601.731.2716	
M&M Electrical Contractor, TN	www.mmpowerline.com	615.382.6912	877.755.9423 MINORITY
N. G. Gilbert Corp., IN (aka Townsend)	www.nggilbert.com	800.428.8128	765.468.3007
National Contractor Services		504.812.7278	
New River Electric, OH/VA	www.newriverelectrical.com	614.891.9132	540.966.1650
Over & Under General Contractors, Inc.		770.682.9160	
PAR Electrical Contractors, MO	www.parelectric.com	816.474.9340	

Petty Line Construction, AL		205.755.2591	
Power Line Consultants, MO		573.747.0646	
Power Delivery Alliance *PDA aggregates small contractors	www.powerdeliveryalliance.com	828.305.7876 770.714.2472	#107 Greg Fox Mobile
PowerGrid Services, Inc.	http://www.powergridservices.com/ http://www.collectivestorm.com/	256-217-5815 334-730-8993 888-797-4743	Main Office Pat White
River City Construction, Inc., NC	www.rivercityinc.net	252.946.8164	
R&M Pole Line Construction, LLC, MO		816.565.1157	
Service Electric, TN	www.serviceelectricco.com	423.265.3161	
Southern Electric Corporation, MS	www.secofms.com	800.949.2258	601.939.2333
Sparks, Inc., Danville, AL	www.sparksinc.com	318.792.0546 Cell	<u>256.584.9601</u> MINORITY
Sumter Utilities, Inc., SC	www.sumter-utilities.com	803.469.8585	
Powerline Services, TX	www.Powerlinesinc.com	469-513-6764	
Tessco, Midlands, TX	www.tesscoenergy.com	432.682.1991	
Townsend, IN T&D, including substation	www.townsendcorporation.com	765.468.3007	800.428.8128
TVA (transmission)	www.tva.gov	423.751.3900 Ext. 8300 423.605.7204	865.632.2101 Tracy A. Flippo
* note that TVA is on the FEMA mutual aid contract and FECA can procure TVA transmission crews if you desire			
United Storm Alliance, Inc., KS *USA aggregates small contractors from the Mid-West	www.usapoweron.com	605.222.9600	816-728-0209
Utility Lines Const Services, PA	www.ulcsinc.com	877.884.5426	
Utility Plus, Inc., OK		405-375-3378 MINORITY	405-229-9362 Cell
Utilicon Services, GA		478.348.3233	
Volt Power, LLC	http://www.powerteamservices.com/company/volt-power-llc/		
Will Bros., TX	www.willbros.com	713.403.8000	

RIGHT OF WAY

Walking ROW crews -			
Southeastern Chem-Treat Chiefland, FL	www.sechemtreat.com	352.493.0438	
Security Fence and ROW, Jay, FL	Shon Owens	850.554.0701	850.675.4032
Asplundh Tree Expert	www.asplundh.com	205.685.4000 Panhandle	800.248.8733
	North & Central	352.333.9370	
	North South East & West	561.406.4750	

Bryant Tree Service, Live Oak, FL		386.688.2965	
Byrd Tree Service LLC, TN		731.772.7288	731.234.5859 Roger Byrd - cell
Butler & Co. Tree and Storm Recovery, LA		337.224.3634	
Davey	www.davey.com	904.768.8733 Jacksonville	239.403.9665 South West
		407.331.8020	Orlando
GAROW, Forsyth, GA		478.315.0880	888.732.7783 Fax
Hartington Tree LLC, NE	www.hartingtontree.com	402.254.6710	
Jackson Line Clearing, GA		770.258.5390	
JAFLO, Inc., PA (works for utilities in FL)	www.jaflotrees.com	610.395.3213	
Kelly Tree Service, NE		308.532.6524	
Phillips & Jordan, Inc.	www.pandj.com	800.955.0876	
Poor Boy Tree Service, Inc., MO	www.poorboytree.com	877.654.2774	417.654.2774
Townsend, IN	www.townsendcorporation.com	800.428.8128	
United Storm Alliance, Inc., KS	www.usapoweron.com	816-728-0209	stuartf@usapoweron.com
W.A. Kendall and Company, Inc., GA	www.wakendall.com	770.963.6017	
Wolf Tree, Inc.	www.wolftreeinc.com	800.231.1113	800.367.6141
Wright Tree Service	www.wrighttree.com	800.882.1216	515.277.6291

TRUCKS/CRANES/EQUIPMENT RENTALS

Crane Rental Corp., Orlando	www.cranerental.com	877.629.5438	407.277.5000
NESCO Sales & Rentals (Bucket trucks and digger derricks)	www.nescosales.com	800.252.0043	260.273.7942
Penske Utility Rental (Bucket trucks and digger derricks)	www.pensketruckrental.com	888.996.5415	844.847.9577
Scott, GA	www.scottpowerline.com	877.388.9269	877.396.1500

HAULERS

McTyre Trucking Co., Inc., Orlando	www.mctyretrucking.com	800.432.3271	470.859.5171
------------------------------------	--	--------------	--------------

ASSESSMENT - INSPECTIONS - ENGINEERING - STAKING

EDM International, Inc. (assessment, logistics)	www.edmlink.com	970.204.4001	
Machen Enterprises, Inc., TX (line staking, assessment)	www.machenenterprises.com	903.886.0001 Office	903.456.3070 Kenneth Machen
Osmose (storm assessment, logistics, post recovery inspections)	www.osmoseutilities.com	813.310.7653	770.632.6700
Paterson & Dewar Engineering, GA	www.pd-engineers.com	770.453.1410	770.453.1410

			C 606.872.3501 Steve Conover
Power Delivery Alliance		828.305.7876 #107	770.714.2472 Greg Fox (Cell)

CATERERS & MEALS

Country Caterers	www.countrycaterersbbq.com	800.940.3728	
Teresa email	teresa@ccbqinc.com	After Hours Cell	904.545.0019
Annette email	annette@ccbqinc.com	After Hours Cell	352.639.3125
Deployed Resources, LLC, NY	www.deployedresources.com	315.281.0039	
Disaster Relief Catering - Miami, FL	www.ajoywallace.com	305.252.0020	
Heater Meals (Self-Heating Meals)	www.heatermeals.com	800.503.4483	
Mobile Help4U.com./Poor Boys Tree Service, MO	www.mobilehelp4u.com	877.654.2774	
OK's Cascade Company	www.oks.com www.ellipse-global.com	800.458.8061	

MATERIALS

GRESKO	www.gresco.com	877.743.0622	
UUS, KY/AL	www.uus.org	800.366.4887	502.741.5020 Gary Burnett cell
		800.697.0386	ALABAMA
Electric Supply Inc., FL	www.electricsupplyinc.com	813.872.1894	800.678.1894
Tri-state, FL	www.tristateutility.com	800-282-7985	

POLES

Langdale, GA	www.langdaleforest.com	229.333.2500	800.864.6909
Nationwide Utility Poles & Supplies, AL	www.nwpoles.com	866.697.6537	205.926.1887
Texas Electric Cooperative Inc.		409.384.4633	

TENT CITIES/CAMPERS

Search "business continuity" in cooperative.com for NRECA's supplier directory with pre-negotiated contracts			
The Asset Group, Inc OK	www.assetgroup.com	877.572.7738	
Atkins (formerly PBS&J) NC	www.atkinsglobal.com/en-GB/north-america	800.477.7275	919.876.6888 Steve Glenn, ext 5236 Mobile: 919.357.5164

Base Logistics LLC Harvey, LA	www.baselogistics.net	504.734.1204 504.734.1206	504.734.1205 504.734.0534 504.734.0535
FourD Solutions, Inc. MS	www.4-dsolutions.com	601.270.7723	
Mobile Help 4 U .com./Poor Boys Tree Service, MO (caterers, fuel tankers, generators and can provide security)	www.mobilehelp4u.com	877.654.2774	417.654.2774
Deployed Resources, LLC, NY	www.deployedresources.com	315.281.0039	
Escambia River E.C.	5 Bunk Trailers that sleep 33 each and a shower trailer	850-327-4122	
OK's Cascade Company	www.oks.com	800.458-8061	Jason Coleman
Service Rentals Inc., Prairieville, LA Jon Baldwin	www.servicerentalsinc.com jon@servicerentalsinc.com	800.679.6610	407.342.8200
		225.413.9328	
Storm Services, LLC Tommy Hopkins Ann Hopkins Elizabeth Hopkins	www.stormsl.com		FEMALE OWNED
	Cairo GA	800.331.0619	
	229. 377.6417	Leland Irby	601.616.3370
	229.225.7182	Glynese Irby	601.479.9567
TentLogix/Premier Party Rentals, FL	www.tentlogix.com	888.347.2789	
United Storm Alliance, Inc., KS	www.usapoweron.com	816-728-0209	stuartf@usapoweron.com
Sleeper trucks	www.mobilesleeper.com	800.347.3677	
	www.oks.com	800.458.8061	
	www.servicerentalsinc.com	407.342.8200	

FUEL MANAGEMENT SERVICES - including night fueling of fleet

Macro Companies	www.MacroOil.com	337.839.5000	
Mobile Help 4 U.com., MO	www.mobilehelp4u.com	877.654.2774	
Quick Fuel, Jacksonville, Tampa, Orlando, Miami	www.quickfuel.com	866.904.4422	
Specialty Fuel Services, LLC, MS (Portable fuel storage tanks and night refueling)	www.specialtyfuelservices.com	866.445.5508	
USA Fuel Service, FL	www.usafuelservice.com	941.456.9629	

HELICOPTER

FourD Solutions, Inc. MS	www.4-dsolutions.com	601.270.7723	
--------------------------	--	--------------	--

MISCELLANEOUS

O'Shea Emergency Services & Inventories Water, MREs, radios, batteries, flashlights, medical and other	www.OsheaEmergency.com	800.669.0903	
--	--	--------------	--

TEMPORARY MOBILE COMMUNICATIONS

Cellhire USA Mobile Solutions, Garland, TX	www.cellhire.com	877.244.7242	
Ligado (formerly Skyterra & Light Squared)	www.ligado.com	877.678.2920	

HURRICANE TRACKING

DTN (formerly Schneider Electric & ElectricTelvent)		800.994.7947	
Customized weather service for daily and hurricane forecasts with 24/7 access to a forecaster.			
Early Alert	www.earlyalert.com	877.932.5378	
University of South Alabama Coastal Weather Research Center	www.southalabama.edu/cwrc	251.460.6101	
Tracking web sites:			
a. Accuweather - www.accuweather.com			
b. BoatUS - www.boatus.com/hurricanes			
c. Intellicast - www.intellicast.com			
d. National Hurricane Center - www.nhc.noaa.gov			
e. Weather Channel - www.weather.com			
f. Weather Underground - www.wunderground.com			