



TROPICAL UPDATE

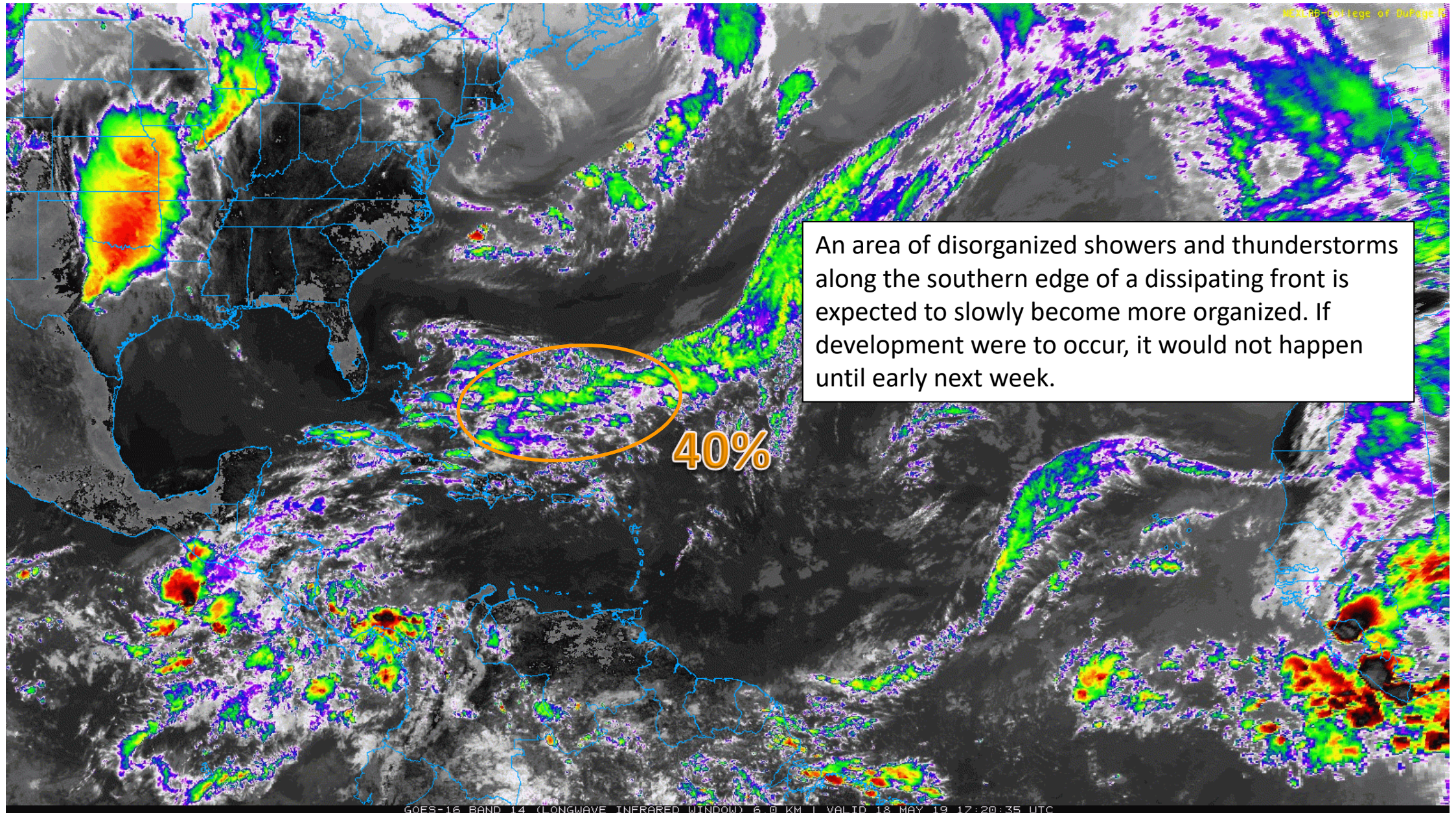
2 PM EDT

Saturday, May 18, 2019

Developing Low South of Bermuda (40%)

This update is intended for government and emergency response officials, and is provided for informational and situational awareness purposes only. Forecast conditions are subject to change based on a variety of environmental factors. For additional information, or for any life safety concerns with an active weather event please contact your County Emergency Management or Public Safety Office, local National Weather Service forecast office or visit the National Hurricane Center website at www.nhc.noaa.gov and Storm Prediction Center at www.spc.noaa.gov.

Atlantic Basin Satellite Image





Five-Day Graphical Tropical Weather Outlook

National Hurricane Center Miami, Florida



www.hurricanes.gov

Disturbance 1

1
(40%)

A large and elongated area of cloudiness and disorganized thunderstorms has developed well to the east of the Bahamas. An area of low pressure is expected to form within this area of disturbed weather several hundred miles south or southwest of Bermuda by early next week. Gradual development of this system into a tropical or subtropical cyclone is possible during the early and middle part of next week while it moves northward or northeastward.

- Formation chance through 48 hours...**low...near 0 percent.**
- Formation chance through 5 days...**medium...40 percent.**

THIS SYSTEM POSES NO THREAT TO FLORIDA.

1:25 pm EDT
Sat May 18 2019

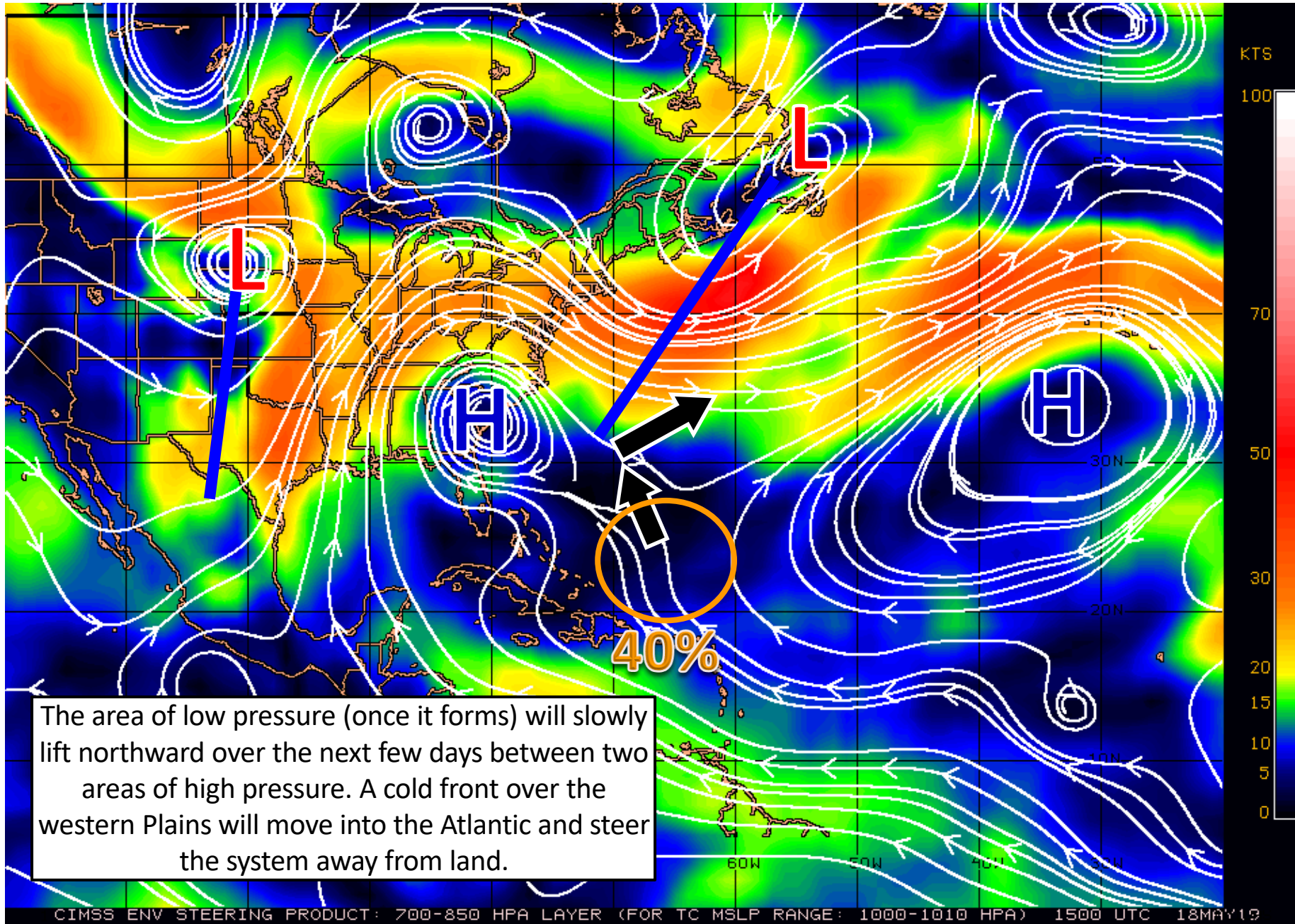
100W 90W 80W 70W 60W 50W 40W 30W 20W

Current Disturbances and Five-Day Cyclone Formation Chance: < 40% 40-60% > 60%

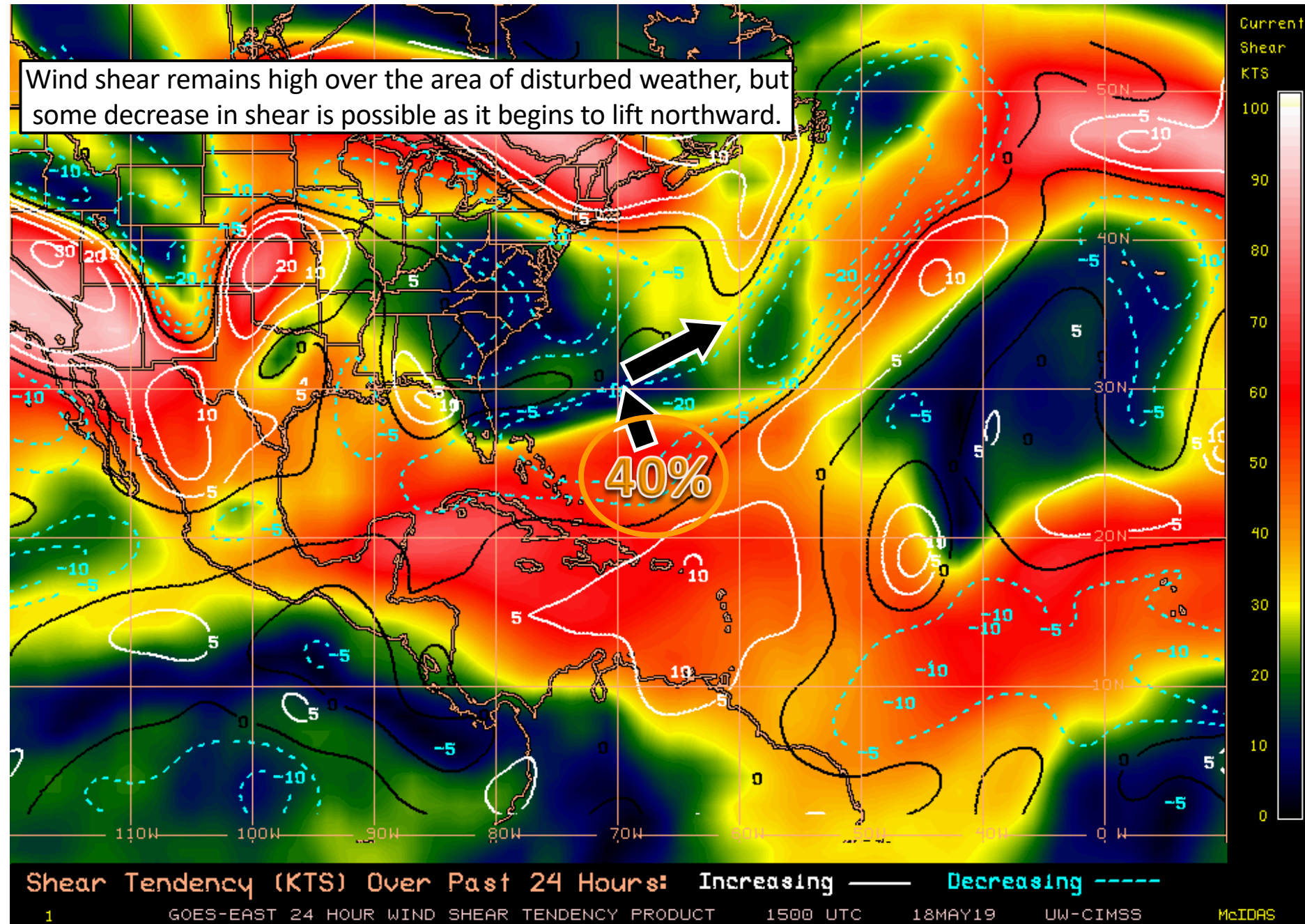
Tropical or Sub-Tropical Cyclone: Depression Storm Hurricane

Post-Tropical Cyclone or Remnants

Steering Currents



Wind Shear (shaded) and Wind Shear Tendencies (contoured)

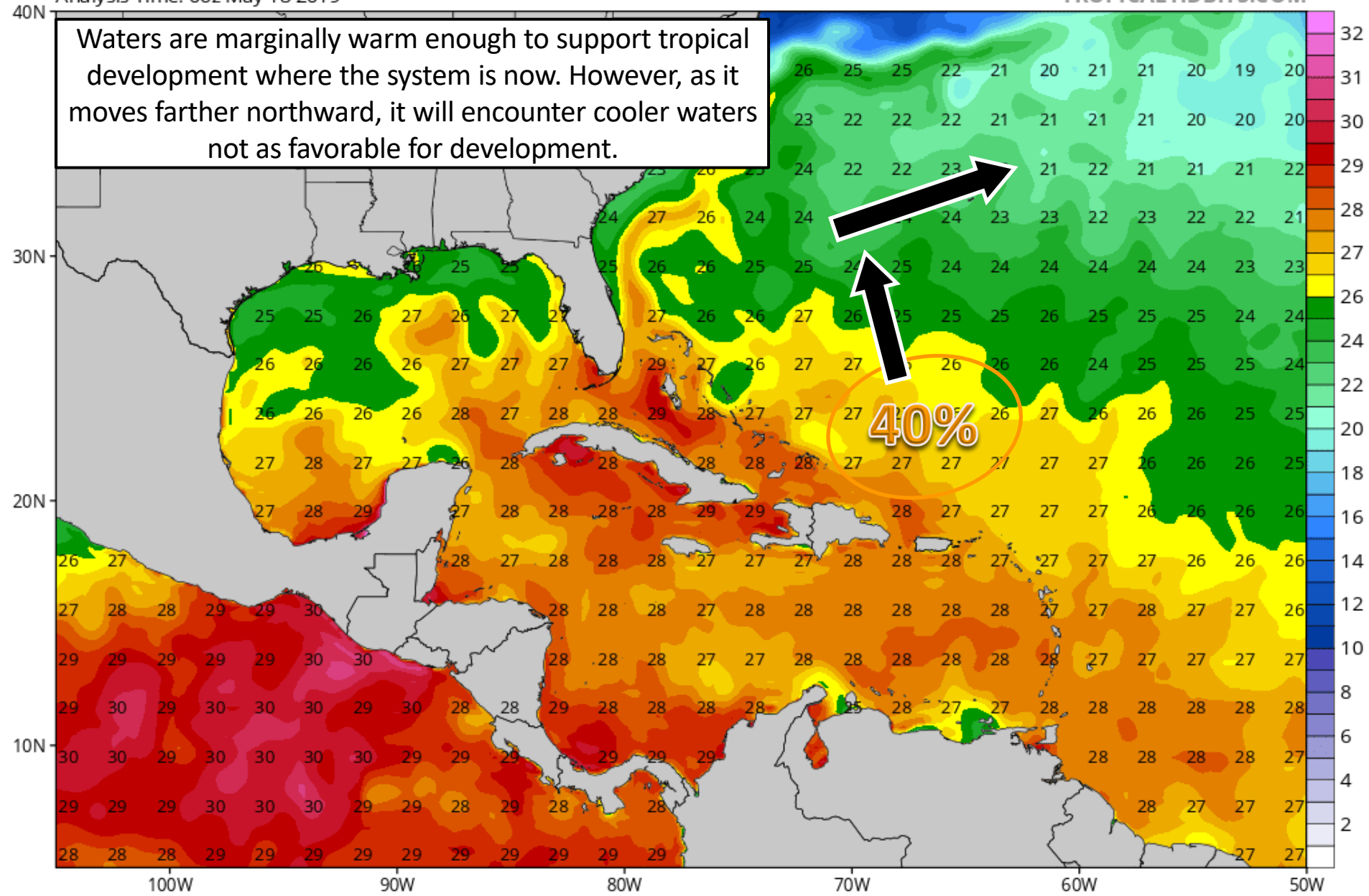


Current Sea Surface Temperatures

CDAS Sea Surface Temperature (°C)

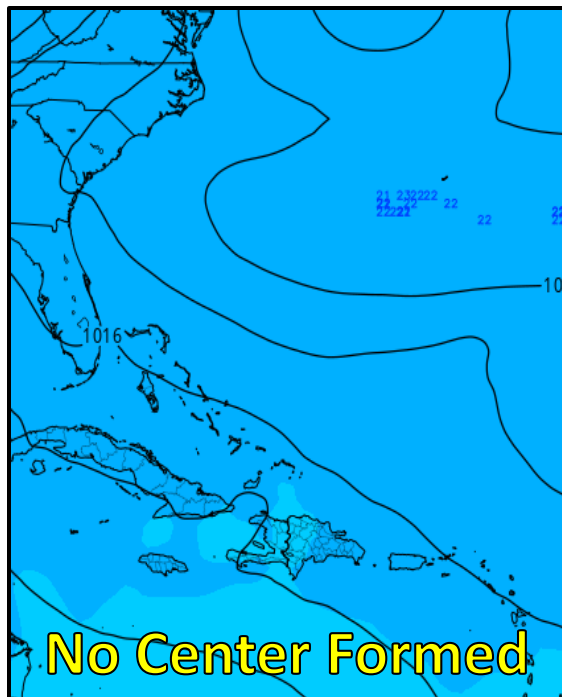
Analysis Time: 06z May 18 2019

TROPICALTIDBITS.COM

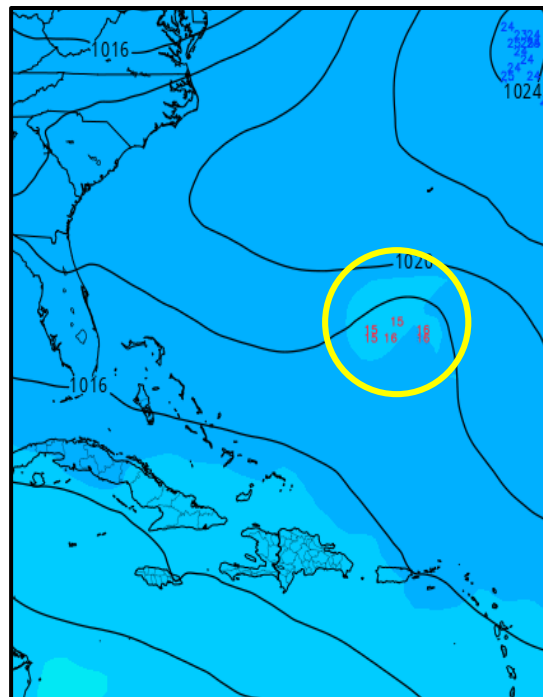


Ensemble Model Forecast Positions

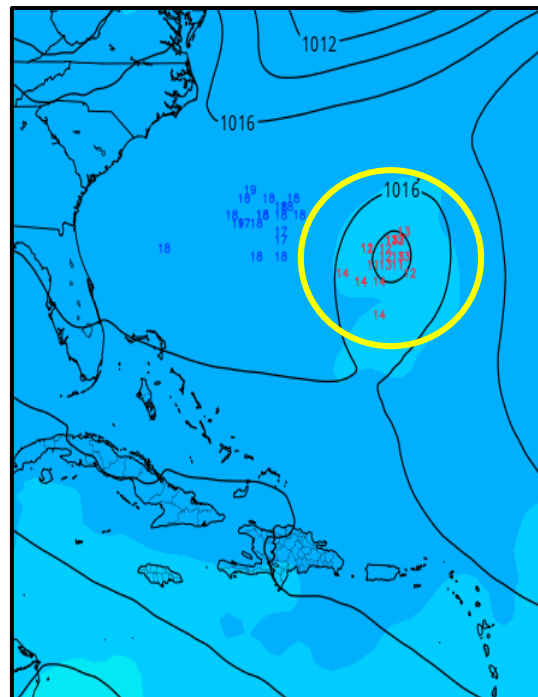
Sunday AM



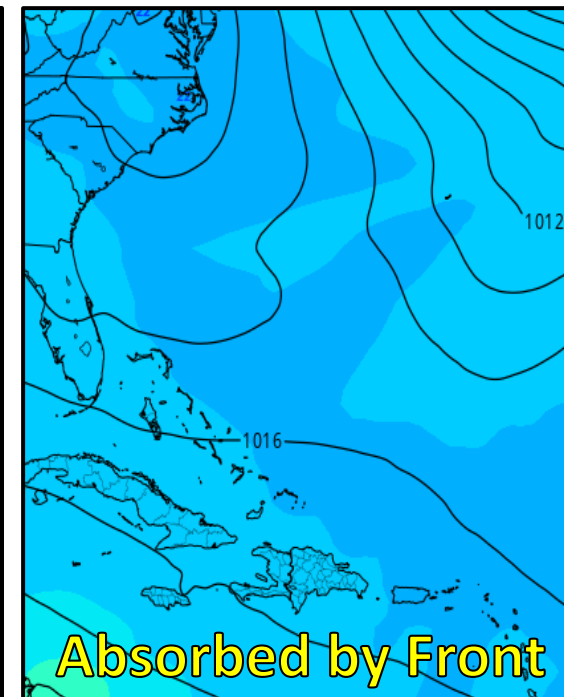
Monday AM



Tuesday AM



Wednesday AM



Each small red number indicates a potential center of low pressure, and blue numbers indicate centers of high pressure.

This area of disturbed weather will have a short time window to develop. Once an area of low pressure forms late Sunday or Monday, it will lift northward toward Bermuda through Tuesday. Then, a cold front will sweep it off to the northeast and absorb the system. Even if tropical or subtropical development were to occur, the system will likely remain weak—minimal tropical storm strength at most. **NO IMPACT TO FLORIDA EXPECTED.**

Summary

- An area of low pressure is expected to form well south or southwest of Bermuda over the next couple days. The National Hurricane Center gives this area a 40% (medium) chance of formation over the next 5 days.
- If tropical or subtropical formation occurs, it will be gradual and will only have a short time window for development.
- Water temperatures are only marginally warm enough for development, and the system will have to battle some shear.
- This system is expected to drift northward through Tuesday before turning northeastward as a cold front absorbs the system
- Models are not forecasting this system to be strong, most keeping it at tropical depression or minimal tropical storm strength at the most.
- **Impacts to Florida are NOT expected.**

Another briefing packet will be issued tomorrow. For the latest information on the tropics, please visit the National Hurricane Center website at www.hurricanes.gov.



TROPICAL UPDATE

Created by:

Cameron Young, Assistant State Meteorologist

Cameron.Young@em.myflorida.com

State Meteorological Support Unit

Florida Division of Emergency Management

Users wishing to subscribe (approval pending) to this distribution list, register at https://public.govdelivery.com/accounts/FLDEM/subscriber/new?topic_id=SERT_Met_Tropics.

Other reports available for subscription are available at <https://public.govdelivery.com/accounts/FLDEM/subscriber/new?preferences=true>